

1 **The antibody response to SARS-CoV-2 increases over 5 months in patients with**
2 **anosmia/dysgeusia**

3
4 Riccardo Levi^{1,2*}, Leonardo Ubaldi^{1,2*}, Chiara Pozzi², Giovanni Angelotti², Maria Teresa Sandri^{1,2},
5 Elena Azzolini^{1,2}, Michela Salvatici², Victor Savevski², Alberto Mantovani^{1,2,3} and Maria
6 Rescigno^{1,2,#}

7
8 ¹Humanitas University, Department of Biomedical Sciences, Via Rita Levi Montalcini, 20090 Pieve
9 Emanuele, MI, Italy.

10 ²Humanitas Clinical and Research Center - IRCCS, Via Manzoni 56, 20089 Rozzano, MI, Italy.

11 ³The William Harvey Research Institute, Queen Mary University of London, London, UK

12
13 *These authors contributed equally to the work

14
15
16 #Corresponding author

17 E-mail: maria.rescigno@hunimed.eu

18 Humanitas University

19 Via Rita Levi Montalcini, 4

20 20090 Pieve Emanuele (MI) Italy

21

22

23

24

25

26

27

28

29 **Abstract**

30

31 The factors involved in the persistence of antibodies to SARS-CoV-2 are unknown. We evaluated the
32 antibody response to SARS-CoV-2 in personnel from 10 healthcare facilities and its association with
33 individuals' characteristics and COVID-19 symptoms in an observational study. We enrolled 4735
34 subjects (corresponding to 80% of all personnel) over a period of 5 months when the spreading of the
35 virus was drastically reduced. For each participant, we determined the rate of antibody increase or
36 decrease over time in relation to 93 features analyzed in univariate and multivariate analyses through
37 a machine learning approach. In individuals positive for IgG (≥ 12 AU/mL) at the beginning of the
38 study, we found an increase [$p= 0.0002$] in antibody response in symptomatic subjects, particularly
39 with anosmia/dysgeusia (OR 2.75, 95% CI 1.753 – 4.301), in a multivariate logistic regression
40 analysis. This may be linked to the persistence of SARS-CoV-2 in the olfactory bulb.

41

42

43 **Introduction**

44 It is becoming clear that the antibody response to SARS-CoV-2 can last at least 6 months in
45 symptomatic patients ¹, but it seems to decline in asymptomatics ². Similarly, a reduction of antibody
46 response in asymptomatic individuals was shown in a study with a fewer number of individuals (n =
47 37) ³. The antibody response in COVID-19 patients is associated with the establishment of a memory
48 B cell response which is higher at 6 months ¹, however, it is not clear whether there are features that
49 correlate with this sustained B cell response. We previously showed that an anti-SARS-CoV-2
50 serological analysis allowed us to follow the diffusion of the virus within healthcare facilities in areas
51 differently hit by the virus ⁴. At 5 months of distance, we analyzed the duration of this antibody
52 response and evaluated whether there were features correlating with maintenance, reduction or
53 increase of the antibody response.

54

55 **Results**

56 We assessed the correlation of the rate of antibody increase or decrease with the different analyzed
57 features. In Tables 1 and 2 are reported the rates for individual classes of features with relative
58 statistical analysis. As shown, in the 5 months of observation, females sustained the antibody
59 response better than males ($p = 0.01$); similarly non-medical healthcare professionals (specifically,
60 healthcare partner operators) had higher antibody rates ($p = 0.0009$). The levels of antibodies
61 increased in hospitals located in the Bergamo area (Castelli and Gavazzeni $p < 0.0001$) (Table 1)
62 which was more hit by COVID-19 (37 – 43% of individuals with $\text{IgG} \geq 12$)⁷. More important, the
63 IgG rate in individuals which were positive for IgG ($\text{IgG} \geq 12$ AU/mL; n = 613) at the beginning of
64 the study was increased ($p < 0.000001$) over time, and this increase was either minor in asymptomatics
65 (n = 91, $p = 0.00003$) and paucisymptomatics (n = 203) or strong in symptomatics (n = 319, $p =$
66 0.0006) (Table 2). On the contrary, those that had an intermediate IgG titer ($3.8 < \text{IgG} < 12$ AU/mL
67 considered as negative) displayed all a significant reduction in IgG rate ($p < 0.000001$) (Table 1).
68 This may be due to a noise in test analysis as these subjects are considered as negative for SARS-
69 CoV-2 IgG according to manufacturer. Many symptoms, including fever, cough, muscle pain,
70 asthenia, tachycardia and anosmia/dysgeusia, correlated with an increase of antibodies in the 5-month
71 observation period (Table 2).

72 As we noticed that the distribution of the rate feature presented a high value of kurtosis (see methods)
73 we restricted the data set to subjects with IgG rates either below the 10th percentile [< -0.033 (n =
74 454)] or above the 90th percentile [> 0.005 (n = 445)] to prevent a bias-variance problem in machine
75 learning models. The accuracy of these rates was confirmed by a linear regression analysis. In Figure
76 1a and 1b are shown the regression diagnostic plots of predicted values against residuals of training

77 and test data according to the threshold (< -0.033 AU/ml*day and > 0.005 AU/ml*day). In Table 3
78 is shown the Chi-squared analysis for the populations below or above the set threshold rates. We
79 found that as for the previous analysis, males reduced the level of antibodies more than females, even
80 though this difference was no longer statistically significant ($p = 0.06$). The levels of antibodies
81 increased in hospitals located in the Bergamo area (Castelli and Gavazzeni: $p = 0.0032$ and $p =$
82 0.0005 , respectively) which was more hit by COVID-19 (37 – 43% of individuals with $\text{IgG} \geq 12$)⁷
83 while it decreased in Humanitas Rozzano ($p=0.0806$) which was less heavily hit (10% of individuals
84 with $\text{IgG} \geq 12$)⁷ (Table 3). The rate decreased in asymptomatic (65% of subjects fell in the group $<$
85 -0.033 ; $p < 0.000001$), remained constant in paucisymptomatic and increased in symptomatic
86 individuals (62% of subjects were in the group > 0.005 ; $p < 0.000001$) (Table 4). Interestingly, among
87 the different symptoms, fever, cough, muscle pain, asthenia, dyspnea, tachycardia, chest pain and
88 anosmia/dysgeusia all correlated with a higher number of individuals falling into the group with rate
89 > 0.005 , indicating that these symptoms were strongly associated with sustained/increased antibody
90 response ($0.000001 < p < 0.05$, Table 4). Among these, anosmia/dysgeusia was associated with the
91 highest percentage of subjects presenting with increased IgG rate (69%; $p < 0.000001$, Table 4).
92 Having observed differences according to sex, role and site, and since many symptoms are linked,
93 we performed a multivariate logistic regression analysis based in a machine learning approach (see
94 methods). We performed a Bagging classifier of 7 logistic analysis on a training (Accuracy = 76.26;
95 ROC AUC = 76.30; Recall = 81.14) and a test dataset (Accuracy = 72.00; ROC AUC = 72.12; Recall
96 = 81.08). In Figure 1c is shown the multivariate logistic regression analysis. We found that the
97 increased rate was associated primarily with anosmia/dysgeusia (regression coefficient=1.0, 95% CI
98 0.56 – 1.46) and with chest pain (regression coefficient=0.84, 95% CI 0.24 – 1.44), while the
99 decreased rate was associated to subjects with intermediate IgG ($3.8 < \text{IgG} < 12$) (regression
100 coefficient = -1.61, 95% CI -2.03 – -1.0), which may be related to a noise in the instrument testing,
101 and with past neoplasia (regression coefficient = -1.38, 95% CI -2.4 – -0.37). Interestingly, 54% of
102 subjects with chest pain also presented loss of smell/taste while only 22% of subjects with smell/taste
103 dysfunction also had chest pain, suggesting that IgG increase in the symptomatic population is
104 primarily linked to anosmia and dysgeusia (not shown). In figure 1d are shown the odds ratio relative
105 to figure 1c, which for chest pain is 2.32 (95% CI 1.27 – 4.24), for anosmia/dysgeusia is 2.75 (95%
106 CI 1.75 – 4.30), for subjects with intermediate IgG ($3.8 < \text{IgG} < 12$) is 0.2 (95% CI 0.13 – 0.30) and
107 for subjects with past neoplasia is 0.25 (95% CI 0.09 – 0.69). Overall, these results indicate that
108 although many symptoms are associated with an increase of IgG abundance in the observation time,
109 only anosmia/dysgeusia and chest pain are associated to a higher IgG rate in the multivariate logistic

110 regression analysis. By contrast the population with past neoplasia or intermediate levels of IgG (3.8
111 $< \text{IgG} < 12 \text{ AU/mL}$) are the one that display a reduction in IgG.

112

113 **Discussion**

114 We analyzed the 5-month duration of an antibody response to SARS-CoV-2 in personnel from 9
115 healthcare facilities and an international medical school (Humanitas University) in Northern Italy in
116 areas differently hit by the virus ⁴. We show that the antibody response is stable both in symptomatic
117 and asymptomatic/paucisymptomatic individuals and is increased in females and in non-medical
118 healthcare professionals. Previously, it has been shown in a study conducted in the British population
119 that the antibody response declines of nearly 22% in symptomatic individuals and of 64% in
120 asymptomatic individuals ². However, this study was based on a prick qualitative test and thus the
121 decline may be related to the sensitivity of the test. We also observed that the antibody response
122 declined when we analyzed the group ($3.8 < \text{IgG} < 12 \text{ AU/mL}$) with IgG between the limit of
123 detection (3.8 AU/mL) and the threshold of positivity ($\text{IgG} \geq 12 \text{ AU/mL}$), as set by manufacturer.
124 Whether this is linked to a noise of the instrument that may change according to the test or to a real
125 reduction in an antibody response that may or may not be specific to SARS-CoV-2, remains to be
126 established. When we analyzed the extremes, i.e. the individuals with higher rates of antibody
127 increase or decrease (< -0.033 and $> 0.005 \text{ AU/mL*day}$) we observed that asymptomatics had higher
128 negative rates while symptomatics tended to continue increasing the antibody levels suggesting that
129 extreme changes in rate separate the symptomatics from the asymptomatics. As during the
130 observation time there was very limited viral diffusion in Northern Italy, as confirmed also by the
131 finding that only 2 individuals became IgG positive and 2981 remained IgG negative throughout the
132 study (all excluded from the analysis), we can conclude that the sustained or augmented antibody
133 response may not be linked to a re-exposure to the virus. In an attempt to address what improved the
134 antibody response, we found that several symptoms were associated to increased rates of antibodies,
135 however, in a multivariate logistic analysis only anosmia/dysgeusia and chest pain were linked with
136 the highest regression coefficients. Chest pain and anosmia are long-lasting symptoms in COVID-19
137 patients ⁸. In addition, anosmia and/or dysgeusia are very common as they are found in around 50-
138 70% of subjects affected by COVID-19 ^{9, 10}. In our cohort (Table 2), 49% of IgG positive subjects
139 had anosmia/dysgeusia, 28% chest pain and 13.7% both anosmia/dysgeusia and chest pain,
140 suggesting that indeed these two symptoms may, either alone or in combination, associate with IgG
141 increase. We and others previously found that anosmia/dysgeusia together with fever were the
142 symptoms that mostly characterized SARS-CoV-2 exposure ^{4, 11}. In agreement, anosmia and
143 dysgeusia have been proposed to be used to track SARS-CoV-2 diffusion ¹². Interestingly, SARS-

144 CoV-2 can infect the olfactory epithelium^{13, 14}, including olfactory sensory neurons, support cells
145 and immune cells, that express the viral entry receptors ACE2 and TMPRSS2^{13, 15, 16}. Here, the virus
146 can persist long and induce local inflammation¹⁴ and olfactory bulb abnormalities^{17, 18, 19}. In
147 agreement, the loss of smell and taste can persist in individuals even with RT-PCR SARS-CoV-2
148 negativity in the nasopharyngeal swab^{14, 20}.

149 Overall, these data suggest that increased antibody response in patients with anosmia/dysgeusia may
150 be linked to persistence of the virus in the olfactory bulb which through local inflammation and
151 release of antigens, maintains and boosts the antibody response. This study opens new perspectives
152 on the immunity to SARS-CoV-2 and warrants further investigation on the role of anosmia/dysgeusia
153 on antibody response through the design of prospective observational studies coupling the testing of
154 SARS-CoV-2 persistence in the olfactory bulb, loss of smell or taste and antibody titers.

155

156 **Methods**

157 Study population

158 This observational study has been approved by the international review board of Istituto Clinico
159 Humanitas for all participating institutes (clinicaltrials.gov NCT04387929). Accrual was on a
160 voluntary basis: it started on April 28th and more than 80% of personnel participated (n = 4735). The
161 study foresees 4 blood collections every 3/4 months. 10 different centers participate: Istituto Clinico
162 Humanitas (ICH), Rozzano (MI); Humanitas Gavazzeni, Bergamo; Humanitas Castelli, Bergamo;
163 Humanitas Mater Domini (HMD), Castellanza (VA); Humanitas Medical Center, HMC, Varese;
164 Humanitas University, Pieve Emanuele (MI); Humanitas San Pio X, Milano; Humanitas Cellini,
165 Torino; Humanitas Gradenigo, Torino; Clinica Fornaca, Torino. All participants signed an informed
166 consent and filled a questionnaire before blood collection. We analyzed 93 features (72 categorical
167 and 17 numerical and 4 temporal) including, age, sex, location, professional role, time between
168 sample collections, COVID-19 symptoms (fever, sore throat, cough, muscle pain, asthenia,
169 anosmia/dysgeusia (loss of smell and taste), gastrointestinal disorders, conjunctivitis, dyspnea, chest
170 pain, tachycardia, pneumonia), home exits and smart-working, comorbidities (diabetes, asthma,
171 neoplasia, autoimmunity, cardiovascular disorders, hepatic disorders). After excluding for employees
172 that became positive for SARS-CoV-2 IgG (n = 2) during the observation period and those that
173 dropped from phase I or for which we were missing at least two features, we analyzed 4534
174 participants (4.25% drop out). Here we show the results of the end of phase II (second blood
175 sampling).

176

177 IgG measure

178 For the determination of IgG anti SARS-CoV-2, the Liaison SARS-CoV-2 S1/S2 IgG assay
179 (DiaSorin, Saluggia (VC), Italy) was used ⁵. The method is an indirect chemiluminescence
180 immunoassay for the determination of anti-S1 and anti-S2 specific antibodies. According to kit
181 manufacturer, the test discriminates among negative (< 12AU/mL; with 3.8 as the limit of IgG
182 detection) and positive (≥ 12.0 AU/mL) subjects. However, we considered also individuals with IgG
183 comprised between 3.8 and 12 AU/mL (which we called IgG med: $3.8 < \text{IgG} < 12.0$ AU/mL).
184 Consistency and reproducibility of the antibody test in samples collected in the two time points was
185 confirmed for a limited number of individuals (n = 50) displaying different degrees of IgG positivity.

186

187 Statistical analysis and model

188 We first cleared the dataset by eliminating data from all of those subjects that did not develop an IgG
189 response over time ($\text{IgG} \leq 3.8$ at the beginning and at the end of the examination) (n = 2981). We
190 then analyzed the rate of antibody response defined as:

191

$$192 \text{RATE} = \frac{\text{IgG phase II} - \text{IgG phase I}}{\Delta \text{days}} = [\text{AU} / \text{mL} * \text{day}]$$

193

$$\Delta \text{days}$$

194

195 Positive rates mean increased antibody response, while negative rates indicate reduction of antibody
196 response between the two analyzed time points.

197 For statistical analysis, we performed both a univariate and a multivariate analysis. We applied
198 Wilcoxon-Mann-Whitney statistical non-parametric test to compare the antibody rate distribution
199 between classes of subjects (Table 1 and Table 2).

200 We analyzed the distribution of the rate feature and found a high value of kurtosis (461) around the
201 median value of 0.016, hence to perform a multivariate analysis we restricted the data set to subjects
202 with IgG rates either below the 10th percentile or above the 90th percentile to prevent a bias-variance
203 problem in machine learning models and subjected the data to a linear regression analysis between
204 the training and test data sets, where the target variable (rate of antibodies) was standardized using
205 the Yeo-Johnson method ⁶. We then applied Chi-squared statistical test to evaluate differences
206 between classes and the rate thresholds described above (Tables 3 and 4). In order to evaluate the
207 possible interactions between features and the rate of antibody response, we developed a multivariate
208 approach to perform a binary classification between subjects who increased or decreased the level of
209 antibodies. A set of 7 logistic regressions has been applied on data using a bootstrap procedure
210 (samples are drawn with replacement) and the output of each classifier has been averaged by a
211 Bagging classifier to obtain the final output. The selection of hyperparameters of the machine learning

212 model and the feature selection has been performed with a Bayesian optimization approach based on
213 cross validation (4 folds, stratified by outcome).

214

215 Data availability

216 Data supporting the findings of this study are available within the paper. All other data are available
217 from the corresponding author upon reasonable requests.

218

219 **References**

- 220 1. Dan JM, *et al.* Immunological memory to SARS-CoV-2 assessed for greater than six months
221 after infection. *bioRxiv*, 2020.2011.2015.383323 (2020).
- 222 2. Ward H, *et al.* Declining prevalence of antibody positivity to SARS-CoV-2: a community
223 study of 365,000 adults. *medRxiv*, 2020.2010.2026.20219725 (2020).
- 224 3. Long QX, *et al.* Clinical and immunological assessment of asymptomatic SARS-CoV-2
225 infections. *Nat Med* **26**, 1200-1204 (2020).
- 226 4. Sandri MT, *et al.* SARS-CoV-2 serology in 4000 health care and administrative staff across
227 seven sites in Lombardy, Italy. *medRxiv*, 2020.2005.2024.20111245 (2020).
- 228 5. Bonelli F, *et al.* Clinical And Analytical Performance Of An Automated Serological Test That
229 Identifies S1/S2 Neutralizing IgG In COVID-19 Patients Semiquantitatively. *J Clin*
230 *Microbiol*, (2020).
- 231 6. Yeo IK, Johnson RA. A new family of power transformations to improve normality or
232 symmetry. *Biometrika* **87**, 954-959 (2000).
- 233 7. Sandri M, Elena Azzolini, Valter Torri, Sara Carloni, Michele Tedeschi, Massimo Castoldi,
234 Alberto Mantovani, Maria Rescigno. IgG serology in health care and administrative staff
235 populations from 7 hospital representative of different exposures to SARS-CoV-2 in
236 Lombardy, Italy. *MedrXiv*, (2020).
- 237 8. Carfi A, Bernabei R, Landi F, Group ftGAC-P-ACS. Persistent Symptoms in Patients After
238 Acute COVID-19. *JAMA* **324**, 603-605 (2020).
- 239 9. Butowt R, von Bartheld CS. Anosmia in COVID-19: Underlying Mechanisms and
240 Assessment of an Olfactory Route to Brain Infection. *Neuroscientist*, 1073858420956905
241 (2020).
- 242 10. Lechien JR, *et al.* Clinical and epidemiological characteristics of 1420 European patients with
243 mild-to-moderate coronavirus disease 2019. *J Intern Med* **288**, 335-344 (2020).

- 244 11. Kumar N, Bhartiya S, Desai S, Mutha A, Beldar A, Singh T. Seroprevalence of Antibodies
245 Against SARS-CoV-2 Among Health Care Workers in Mumbai, India. *Asia Pac J Public*
246 *Health*, 1010539520977307 (2020).
- 247 12. Pierron D, *et al.* Smell and taste changes are early indicators of the COVID-19 pandemic and
248 political decision effectiveness. *Nat Commun* **11**, 5152 (2020).
- 249 13. Brann DH, *et al.* Non-neuronal expression of SARS-CoV-2 entry genes in the olfactory
250 system suggests mechanisms underlying COVID-19-associated anosmia. *Sci Adv* **6**, (2020).
- 251 14. De Melo GD, *et al.* COVID-19-associated olfactory dysfunction reveals SARS-CoV-2
252 neuroinvasion and persistence in the olfactory system. *bioRxiv*, 2020.2011.2018.388819
253 (2020).
- 254 15. Bilinska K, Jakubowska P, Von Bartheld CS, Butowt R. Expression of the SARS-CoV-2
255 Entry Proteins, ACE2 and TMPRSS2, in Cells of the Olfactory Epithelium: Identification of
256 Cell Types and Trends with Age. *ACS Chem Neurosci* **11**, 1555-1562 (2020).
- 257 16. Chen M, *et al.* Elevated ACE-2 expression in the olfactory neuroepithelium: implications for
258 anosmia and upper respiratory SARS-CoV-2 entry and replication. *Eur Respir J* **56**, (2020).
- 259 17. Politi LS, Salsano E, Grimaldi M. Magnetic Resonance Imaging Alteration of the Brain in a
260 Patient With Coronavirus Disease 2019 (COVID-19) and Anosmia. *JAMA Neurol* **77**, 1028-
261 1029 (2020).
- 262 18. Tsvigoulis G, *et al.* Olfactory bulb and mucosa abnormalities in persistent COVID-19-
263 induced anosmia: a magnetic resonance imaging study. *Eur J Neurol*, (2020).
- 264 19. Laurendon T, *et al.* Bilateral transient olfactory bulb edema during COVID-19-related
265 anosmia. *Neurology* **95**, 224-225 (2020).
- 266 20. Yan CH, Prajapati DP, Ritter ML, DeConde AS. Persistent Smell Loss Following
267 Undetectable SARS-CoV-2. *Otolaryngol Head Neck Surg* **163**, 923-925 (2020).
- 268

269 **Acknowledgments**

270 This work was partially supported by a philanthropic donation by Dolce & Gabbana, by the Italian
271 Ministry of Health (Ricerca corrente) and by Fondazione Humanitas per la Ricerca.

272 We would like to thank all the employees that volunteered to participate to this study, all the nurses
273 and personnel that collected the samples and the laboratory technicians that run the serological and
274 rinopharyngeal tests. We would also like to thank the Humanitas management and staff, Drs Patrizia
275 Meroni, Michele Lagioia and Michele Tedeschi, who warmly supported this study for the safety of
276 the employees.

277

278 **Author contribution**

279 R.L. and L.U.: performed data analysis; C.P.: contributed to data analysis and manuscript writing;
280 G.A. and V.S.: contributed to data analysis; M.T.S.: coordinated and supervised the laboratory
281 analyses; E.A.: coordinated the recruitment and sampling of subjects (project administration) and
282 participated in clinical study design; M.S.: carried out the laboratory analyses; A.M.:
283 conceptualization and funding acquisition; M.R.: conceived the study, analyzed the data and wrote
284 the manuscript.

285

286 **Competing interests**

287 The authors declare no competing interests.

288

289

290 **Tables**

291 Table 1. Demographic distribution of antibody rates.

		counts	min	25 perc	50 perc	75 perc	max	mean	St.Dev.	p_value ^a
Sex	F	1105	-3.39	-0.04	-0.02	0.02	16.32	0.07	0.61	0.0139
	M	448	-0.88	-0.04	-0.02	0	10.37	0.03	0.53	
Age	21-30	300	-3.39	-0.04	-0.02	0.01	4.51	0.03	0.41	0.2644
	31-40	365	-0.92	-0.04	-0.02	0.01	2.26	0.02	0.21	0.2302
	41-50	455	-2.49	-0.04	-0.02	0.03	3.11	0.06	0.37	0.1083
	51-60	309	-0.88	-0.04	-0.01	0.02	16.32	0.1	0.96	0.1442
	60+	124	-0.68	-0.04	-0.02	-0.01	10.37	0.12	0.99	0.0586
BMI ^b	18.5 ≤ BMI < 25	940	-0.92	-0.04	-0.02	0.01	10.37	0.03	0.41	0.3821
	BMI ≥ 30	106	-3.39	-0.05	-0.02	0.14	16.32	0.23	1.69	0.2182
	25 ≤ BMI < 30	347	-0.57	-0.04	-0.02	0.01	3.11	0.05	0.29	0.3933
	BMI < 18.5	73	-0.22	-0.04	-0.02	0.02	1.27	0.05	0.26	0.3959
IgG class phase I	IgG ≥ 12	613	-3.39	-0.08	0.02	0.23	16.32	0.18	0.92	2.1 E-10
	IgG ≤ 3.8	74	0.01	0.01	0.02	0.03	0.08	0.02	0.01	1.5 E-15
	3.8 < IgG < 12	866	-0.13	-0.03	-0.02	-0.01	0.83	-0.02	0.04	8.0 E-22
Role	Other ^c	200	-0.57	-0.04	-0.02	-0.01	16.32	0.09	1.17	0.0116
	Anesthesiologist	19	-0.83	-0.04	-0.02	0.01	0.09	-0.05	0.2	0.4305 ^b
	Biologist	18	-0.18	-0.05	-0.02	-0.02	0.03	-0.04	0.05	0.0978 ^b
	Surgeon	67	-0.88	-0.05	-0.02	0.07	0.61	0.02	0.21	0.2653
	Physiotherapist	21	-0.12	-0.04	-0.02	0.01	0.35	0.01	0.1	0.4204
	Nurse	398	-3.39	-0.04	-0.02	0.04	3.11	0.08	0.41	0.0581
	Physician	210	-0.92	-0.04	-0.01	0.02	10.37	0.08	0.75	0.0804
	Healthcare Partner Operator	149	-2.49	-0.03	-0.01	0.17	1.55	0.1	0.38	0.0009
	Front office (PARC)	108	-0.32	-0.04	-0.02	0.01	2.55	0.03	0.27	0.2892
	Researcher	50	-1.5	-0.03	-0.02	-0.01	4.51	0.06	0.68	0.1514
	Cleaning service	29	-0.65	-0.03	-0.02	0.03	1.72	0.09	0.41	0.2414
	Transport service	14	-0.39	-0.04	-0.01	0.02	2.22	0.13	0.62	0.4359 ^b
	Staff	188	-0.4	-0.04	-0.02	-0.01	0.98	0	0.15	0.0026
	Student	20	-0.19	-0.03	-0.02	-0.01	0.21	-0.02	0.08	0.3705 ^b
	Laboratory technician	31	-0.17	-0.03	-0.01	-0.01	0.51	0.02	0.15	0.3243
Radiology technician	31	-0.18	-0.03	-0.02	0.01	1.01	0.04	0.22	0.4002	
Site	Other ^c	21	-0.19	-0.04	-0.02	-0.01	2.22	0.08	0.49	0.2080
	Casa di Cura Cellini	51	-0.17	-0.05	-0.03	-0.01	1.27	0.01	0.22	0.0111
	Clinica Fornaca di Sessant	47	-0.4	-0.05	-0.03	0	0.53	0	0.15	0.0833
	Humanitas Castelli	87	-0.28	-0.04	0.02	0.21	3.11	0.24	0.62	4.7 E-05
	Humanitas Gavazzeni	313	-0.88	-0.04	-0.01	0.15	10.37	0.13	0.68	0.0001
	Humanitas Gradenigo	109	-2.49	-0.04	-0.02	-0.01	0.67	-0.01	0.27	0.0586
	Humanitas Mater Domini	105	-0.17	-0.03	-0.02	-0.01	0.63	0	0.1	0.3412
	Humanitas Medical Care	23	-0.19	-0.04	-0.02	-0.01	0.02	-0.03	0.04	0.0969
	Humanitas Rozzano	667	-3.39	-0.04	-0.02	0	16.32	0.04	0.7	0.0338
	Humanitas San Pio X	98	-0.68	-0.03	-0.02	0	2.39	0.04	0.29	0.2968
Humanitas University	32	-0.2	-0.04	-0.02	-0.01	0.19	-0.03	0.08	0.0590	

^a = Wilcoxon-Mann-Whitney test

^b = Some subjects did not indicate their BMI

^c = Refers to volunteers and other professionals that operate in several structures

^d = Minority class is less or equal to 20 (Wilcoxon-Mann-Whitney test is not reliable)

292
293
294
295

296 Table 2. Antibody rates according to symptoms.

297

		counts	min	25 perc	50 perc	75 perc	max	mean	St. Dev.	p_value ^a	
Class symptoms phase 1 (subjects with IgG ≥ 12)	Asymptomatic	91	-1.5	-0.13	-0.05	0.09	2.39	0.04	0.5	0.00003	
	Paucisymptomatic	203	-3.39	-0.08	0.02	0.21	4.51	0.14	0.56	0.32865	
	Symptomatic	319	-2.49	-0.06	0.07	0.28	16.32	0.24	1.16	0.00057	
Symptoms phase 1 (subjects with IgG ≥ 12)	Fever	No	350	-3.39	-0.09	0.01	0.21	4.51	0.13	0.02725	0.02725
		Yes	263	-2.49	-0.06	0.05	0.25	16.32	0.24		
	Low-grade fever	No	481	-3.39	-0.08	0.02	0.23	16.32	0.19	0.17265	0.17265
		Yes	132	-0.39	-0.07	0.05	0.26	2.55	0.14		
	Cough	No	372	-3.39	-0.08	0.01	0.19	16.32	0.14	0.01120	0.01120
		Yes	241	-2.49	-0.07	0.07	0.31	10.37	0.24		
	Sore throat	No	353	-3.39	-0.09	0.02	0.23	16.32	0.19	0.08309	0.08309
		Yes	260	-2.49	-0.07	0.04	0.25	4.51	0.16		
	Muscle pain	No	299	-1.5	-0.1	0	0.2	4.51	0.13	0.00763	0.00763
		Yes	314	-3.39	-0.06	0.06	0.27	16.32	0.22		
	Asthenia	No	341	-3.39	-0.1	0	0.21	16.32	0.17	0.00574	0.00574
		Yes	272	-2.49	-0.06	0.07	0.25	10.37	0.19		
	Anosmia / dysgeusia	No	313	-3.39	-0.12	-0.01	0.2	16.32	0.14	0.00006	0.00006
		Yes	300	-0.86	-0.05	0.06	0.28	10.37	0.22		
	Gastrointestinal disorders	No	403	-3.39	-0.08	0.03	0.21	10.37	0.17	0.46477	0.46477
		Yes	210	-2.49	-0.08	0.02	0.25	16.32	0.19		
	Conjunctivitis	No	517	-3.39	-0.08	0.02	0.21	16.32	0.18	0.16050	0.16050
		Yes	96	-2.49	-0.07	0.04	0.32	1.72	0.14		
	Dyspnea	No	493	-3.39	-0.08	0.02	0.23	16.32	0.16	0.34700	0.34700
		Yes	120	-2.49	-0.07	0.05	0.26	10.37	0.24		
	Chest pain	No	502	-3.39	-0.08	0.01	0.24	10.37	0.15	0.08088	0.08088
		Yes	111	-0.39	-0.04	0.07	0.22	16.32	0.3		
	Tachycardia	No	512	-3.39	-0.08	0.01	0.21	4.51	0.13	0.02353	0.02353
		Yes	101	-2.49	-0.06	0.08	0.32	16.32	0.4		
Pneumonia	No	568	-3.39	-0.08	0.02	0.22	16.32	0.15	0.18692	0.18692	
	Yes	45	-0.88	-0.06	0.06	0.38	10.37	0.51	1.69		

^a = Wilcoxon-Mann-Whitney test

298
299
300
301
302
303
304
305
306
307
308
309
310
311

312 Table 3. Chi-squared analysis of groups < 10th percentile and > 90th percentile.

		< 10 perc	> 90 perc	p_value
Sex	F	321	340	0.0627
	M	133	105	
Age	21-30	93	83	0.5429
	31-40	108	94	0.3804
	41-50	121	142	0.0970
	51-60	88	98	0.3711
	60+	44	28	0.0793
BMI ^a	18.5 ≤ BMI < 25	267	255	0.6963
	BMI ≥ 30	58	72	0.1750
	25 ≤ BMI < 30	106	93	0.4214
	BMI < 18.5	23	25	0.8261
Role	Other ^b	63	37	0.0109
	Anesthesiologist	6	7	0.9701
	Biologist	5	2	0.4640
	Surgeon	25	21	0.7007
	Physiotherapist	6	7	0.9710
	Nurse	113	132	0.1255
	Physician	56	61	0.6082
	Healthcare Partner Operator	38	64	0.0062
	Front office (PARC)	31	28	0.8494
	Researcher	13	9	0.5485
	Cleaning service	7	9	0.7698
	Transport Service	5	5	0.7747 ^c
	Staff	69	44	0.0214
	Student	5	4	0.9759 ^c
	Laboratory Technician	6	7	0.9701
Radiology Technician	6	8	0.7587	
Site	Other ^b	6	3	0.5223 ^c
	Casa di Cura Cellini	19	8	0.0573
	Clinica Fornaca di Sessant	18	12	0.3828
	Humanitas Castelli	23	47	0.0032
	Humanitas Gavazzeni	97	142	0.0005
	Humanitas Gradenigo	36	22	0.0918
	Humanitas Mater Domini	20	23	0.7041
	Humanitas Medical Care	8	3	0.2379 ^c
	Humanitas Rozzano	190	160	0.0806
	Humanitas San Pio X	27	21	0.5025
	Humanitas University	10	4	0.1905 ^c
^a = Some subjects did not indicate their BMI				
^b = Refers to volunteers and other professionals that operate in several structures				
^c = Minority class is less or equal to 5 (chi-square test is not reliable)				

313
314

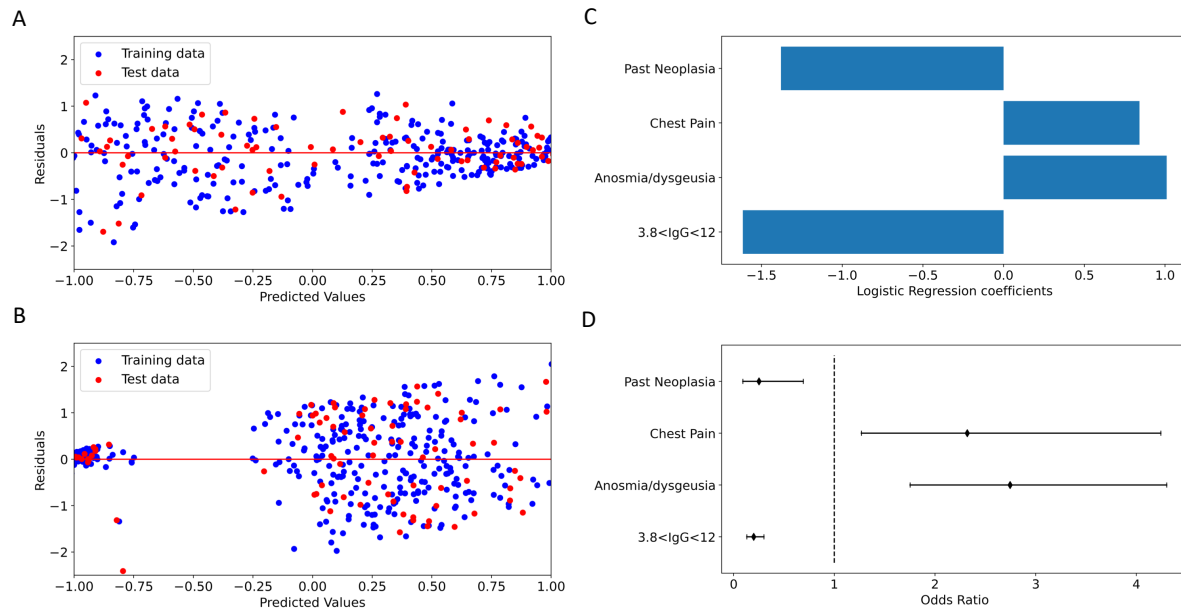
315 Table 4. Chi-squared analysis of groups < 10th percentile and > 90th percentile per symptoms.

			<10perc	>90perc	p_value	%Yes<10perc ^a	%Yes>90perc ^a
Symptoms	Fever	No	360	284	3.9E-07	37	63
		Yes	94	161			
	Low-grade fever	No	388	359	0.0678	43	57
		Yes	66	86			
	Cough	No	335	284	0.0016	43	58
		Yes	119	161			
	Sore throat	No	302	271	0.0923	47	53
		Yes	152	174			
	Muscle pain	No	310	246	0.0001	42	58
		Yes	144	199			
	Asthenia	No	340	268	3.7E-06	39	61
		Yes	114	177			
	Anosmia/dysgeusia	No	364	247	4.0E-15	31	69
		Yes	90	198			
	Gastrointestinal disorders	No	336	313	0.2485	47	53
		Yes	118	132			
	Conjunctivitis	No	400	382	0.3633	46	54
		Yes	54	63			
	Dyspnea	No	405	375	0.0370	41	59
		Yes	49	70			
Chest pain	No	415	367	0.0001	33	67	
	Yes	39	78				
Tachycardia	No	406	371	0.0107	39	61	
	Yes	48	74				
Pneumonia	No	440	420	0.0889	36	64	
	Yes	14	25				
Total of Symptoms in phase I	Asymptomatic	150	80	3.4E-07	65	35	
	Paucisymptomatic	179	158	0.2520	53	47	
	Symptomatic	125	207	5.6E-09	38	62	
Comorbidities	Chronic Obstructive Bronchopneumopathy	No	451	444	0.6305 ^b		
		Yes	3	1			
	Asthma	No	430	412	0.2408		
		Yes	24	33			
	Dyslipidemia	No	413	404	0.9834		
		Yes	41	41			
	Past Neoplasia	No	431	438	0.0063		
		Yes	23	7			
	Hypertension	No	401	409	0.0915		
		Yes	53	36			
	Past Coronaropathies	No	454	443	0.4702 ^b		
		Yes	0	2			
	Atrial Fibrillation	No	450	441	0.7439 ^b		
		Yes	4	4			
	Past Stroke/ TIA	No	452	445	0.4878 ^b		
		Yes	2	0			
	Steatosis/Cyrrosis	No	448	444	0.1359 ^b		
		Yes	6	1			
	Chronic kidney failure	No	453	445	0.9920 ^b		
		Yes	1	0			
Other liver diseases	No	452	441	0.6641 ^b			
	Yes	2	4				
Rheumatological diseases	No	445	431	0.3715			
	Yes	9	14				
Other diseases of the immune system	No	418	409	0.9726			
	Yes	36	36				
Diabetes mellitus	No	452	443	0.6305 ^b			
	Yes	2	2				
Gotta	No	452	445	0.4878 ^b			
	Yes	2	0				

^a = Percentage of subjects with symptoms (Yes) per rate class
^b = Minority class is less or equal to 5 (chi-square test is not reliable)

316
317
318

319 **Figure**



320
321 **Figure 1:** **a**, Dataset < 10% percentile Regression Diagnostic plot of predicted values against
322 residuals of training and test data; **b**, Dataset >90% percentile Regression Diagnostic plot of predicted
323 values against residuals of training and test data; **c**, Barplot with Logistic Regression coefficients for
324 most important features; **d**, Odds ratio of Logistic Regression with confidence intervals (95%) for the
325 most important features.

326

327

328