

1 **PesTrapp mobile app: A trap setting application for real-time** 2 **entomological field and laboratory study**

3
4 Cheong Yoon Ling^{1*}, Rosilawati Rasli^{2*}, Mohd Khairuddin Che Ibrahim^{3*}, Siti Fitri Farahinajua
5 Fikri², Nur Ayuni Nazarudin², Lim Kuang Hock¹, Khairul Asuad Muhamed², Mohd Zahari Tajul
6 Hassan³, Mohd Izral Yahya Umpong³, Mohd Zainuldin Taib¹, Nazni Wasi Ahmad², Lee Han Lim²

7
8 ¹Biomedical Museum Unit, Special Resource Centre, Institute for Medical Research, Ministry of
9 Health Malaysia, Jalan Pahang, 50588 Kuala Lumpur, Malaysia

10 ²Medical Entomology Unit, Infectious Disease Research Centre, Institute for Medical Research,
11 Ministry of Health Malaysia, Jalan Pahang, 50588 Kuala Lumpur, Malaysia

12 ³Biomedical Research, Strategic & Innovation Management Unit, Institute for Medical Research,
13 Ministry of Health Malaysia, Level 6, Block C6, National Institutes of Health (NIH), Setia Alam
14 Selangor, Malaysia

15
16 * Correspondence, these authors contributed equally to this work.
17 cheongyl@moh.gov.my (CYL), rosilawati.r@moh.gov.my (RR), m.khairuddin@moh.gov.my
18 (MKCI)

19

20 **Abstract**

21 Zoonotic diseases such as malaria, dengue, Zika and chikungunya remain endemic in many
22 countries. Setting and deploying trap to capture the host/vector species are fundamental to
23 understand their density and distribution. Human effort to manage the trap data accurately
24 and timely is an exhaustive endeavour when the study area expands and study period
25 prolongs. One stop mobile app to manage and monitor the process of animal trapping, from

26 field to laboratory level research that has not been developed or reviewed and published. PesTrapp

27 especially for medical entomologists to acquire the vector density index based on the mobile
28 updates of ovitraps and species information in field and laboratory. This study aimed to
29 highlight the mobile app's development and design, describe the user experience and evaluate
30 the preliminary user assessment of the mobile app. The mobile app was developed using
31 mobile framework and database. User evaluation of the mobile app was based on the adjusted
32 Mobile App Rating Scale and Standardized User Experience Percentile Rank Questionnaire.
33 The process flows of system design and detailed screen layouts were described. The user
34 experiences of using the app in a project to study *Aedes* surveillance in six study sites in
35 Selangor, Malaysia were described. The overall mean user evaluation score of the mobile app
36 was 4.0 (SD=0.6), which showed its acceptability by the users. The PesTrapp, a one-stop
37 solution, is anticipated to improve the entomological surveillance work processes. This new
38 mobile app can contribute as a tool in the vector control countermeasure strategies.

39 (248 words)

40

41 **Keywords**

42 Dengue, evaluation, ovitrap index, *Aedes aegypti*, *Aedes albopictus*

43

44

45 INTRODUCTION

46 Emerging and re-emerging zoonotic diseases are significant issues in global health ¹. Dengue,
47 an important vector-borne zoonotic disease globally, is endemic in many tropical countries.
48 In the continued absence of an effective vaccine and antivirals, chemical control, biological
49 control, environmental management, health education and legislation are utilised to control
50 the *Aedes* vectors and the diseases they carry ². Ovitrap, a device which consists of a 300-ml
51 plastic container with straight and slightly tapered sides ³ is used to characterise the temporal
52 and spatial distribution and abundance of *Aedes* mosquitoes in a locality by taking advantage
53 of the preference of *Aedes* mosquitoes laying eggs in containers. Usually, a minimal number
54 of ovitraps, i.e. 50 to 100 ovitraps, deployed in one locality, indoor or/and outdoor, and
55 recollected after 5 to 7 days can be used to estimate vector abundance in a large urban area
56 (Mogi et al. 1990). The ovitrap index, the entomological indicator, which quantifies the
57 infestation frequency of vector mosquitoes, is the number of traps with study subjects
58 (mosquito species) divided by the total recovered traps. The mean number of larvae per trap
59 is used to estimate the adult mosquito abundance. These data have been used to construct
60 early warning prediction model to forestall dengue outbreaks so that remedial action can be
61 taken to avoid and suppress the outbreak ^{4,5}.

62

63 Currently, the ovitrap deploying process is tedious and resource hunger. The field team first
64 deploys the ovitraps in a selected study site. While deploying in the study site, a distinct
65 ovitrap code is assigned for each ovitrap and the house number, road and descriptions are
66 recorded in a prescribed paper datasheet. To obtain the coordinates of the location, the same
67 ovitrap code is inserted in the Global Positioning System (GPS) devices and the coordinates
68 of the location are captured. After five to seven days, the team search and collect the traps
69 based on the recorded information. The status of the ovitraps, whether missing or found, is

70 updated in the datasheet. Back in the laboratory, the datasheet is then updated in a master
71 Microsoft Excel file. The data from the GPS devices is exported to .csv or .dat file and
72 updated in the master Excel file. Then, the species of the adult mosquitoes is identified and
73 recorded in paper by the laboratory assistants if no computer is available in the laboratory.
74 Subsequently, the species information will be matched and updated in the master Excel file.
75 Finally, the ovitrap index and mean larva per trap are analysed and reported in graphs or
76 charts. The common problems of these conventional manual activities are bulk data to
77 compile, inconsistency of recording method, errors while transcribing the information and
78 misidentification of ovitraps. Different platforms of data recording and storage, from paper,
79 GPS devices to Excel sheet, are not integrated. When the data grows large with many site
80 monitoring, without a database system, the data management and interpretation process with
81 spreadsheets alone are exhaustive and error prone.

82

83 Several mobile applications are utilised to monitor animal trap by embedded sensor ^{6,7},
84 analyse the images of pests on glue board ⁸ and monitor the capture-mark-recapture process ⁹.
85 The US Centers for Disease Control and Prevention (CDC) developed a mobile app named
86 “Epi Info Vector Surveillance Application” to track and enter mosquito surveillance data and
87 insecticide resistance bioassay testing ¹⁰. The public commercialised outdoor GPS recording
88 mobile app (e.g. Handy GPS, Geo Tracker, A-GPS Tracker) would be the alternatives to
89 acquire coordinates of traps, but they are not integrated with the project database. As far as
90 our knowledge can tell, mobile app to manage and monitor the process of animal trapping,
91 from field to laboratory level, in particular for vector borne zoonotic disease studies is scarce.
92 Based on the requests from the medical entomologists, a one stop project-based mobile
93 application (app) that integrate all processes to obtain *Aedes* index, from field to laboratory, is
94 urgently needed. Therefore, we developed a mobile app named “PesTrapp” as a trap setting

95 application for real-time field and laboratory study. This study aimed at three objectives,
96 firstly, to describe the development and design of the mobile app; secondly, to illustrate the
97 user experience of using the mobile app; thirdly, to evaluate the preliminary user assessment
98 of the mobile app.

99

100 **MATERIALS AND METHODS**

101 **Development of the mobile app**

102 The PesTrapp is developed from scratch using PHP ¹⁷ and MySQL database storage ¹⁸ on the
103 Android operating system as Google's Android is open source Linux based ¹⁵ and widely
104 used ¹⁶. The user interface is developed using javascript code and html5. The final code are
105 compiled and bundled using Apache Cordova ¹⁹, open source Onsen javascript library ²⁰ into
106 wrapper and APK file. The services used by PesTrapp are Google Maps Application
107 Programming Interface (API) for the mapping and Google Firebase API ²¹ for pushing
108 notification.

109

110 **Design of the mobile app**

111 The functions of PesTrapp mobile are sequentially divided into several processes, namely
112 preparation, deployment of ovitraps, collection of ovitraps, identification of species and
113 reports. Upper part of Fig. 1 showed the screen layout of preparation process. System
114 administrator or project leader pre-register the PesTrapp users in the web dashboard.
115 Subsequently, registered and login user able to register the study site in the mobile app by
116 setting the site code, site name, type of site (landed houses or high-rise
117 flats/apartments/condominiums), number of traps and code of traps. Lower part of Fig. 1
118 depicted the deployment of ovitraps process. There are four main functions in the main menu
119 of the app, namely, deployment of ovitraps, collection of ovitraps, identification of species

120 and reports. User clicks the “Deployment of ovitraps” button and search or select the site
121 from list. For landed houses, user inserts trap status (indoor/outdoor), house number, road,
122 description of traps, records coordinate and takes photo of trap location. For high-rise
123 flats/apartments/condominiums, user inserts trap status (indoor/outdoor), house number,
124 level, block, description of traps and takes photo. The information is instantly saved in the
125 database server. Capturing of coordinates per ovitrap is impossible in high-rise as GPS signal
126 is often low. The ovitrap status screen is displayed for both deployment and collection of
127 ovitrap using color coding. Green color indicates ovitraps that have been deployed, white
128 color indicates ovitraps that have not yet been deployed.

129

130 Upon collecting the trap as shown in upper part of Fig. 2, user refers to the retrieved map and
131 photo. User traces the location of ovitraps based on saved information and then updates status
132 whether each ovitrap is recovered or not recovered. If the trap is missing or broken, user
133 updates as “Not recovered” option. With the ovitrap status page, user knows the latest status
134 of ovitrap being collected. Green colour indicates ovitraps that have been collected, white
135 colour indicates ovitraps that have not yet been collected and red colour indicates not
136 recovered trap. Lower part of Fig. 2 showed the identification of species process and screen
137 layouts. In the laboratory, user inserts the species identification details directly in the
138 PesTrapp. The app instantly displays overall, indoor and outdoor ovitrap index as well as
139 overall, indoor and outdoor mean larvae per recovered ovitrap by species as shown in Fig. 3.
140 User can export the data to .csv and print.

141

142 **Hands-on user field experiences**

143 We described the field experience under real life situation of using the PesTrapp app based
144 on the project Insecticide Resistance Mapping. Ovitrap deployment for *Aedes* sampling (60

145 ovitrap for each site) were carried out at six study sites in the district Gombak and Hulu
146 Langat, Selangor. Five of the sites were landed houses (Kampung Sungai Chinchin,
147 Kampung Baru Ampang, Kampung Padang, Kampung Jawa and Bandar Mahkota) and one
148 was high-rise apartment (Apartment Bukit Baru).

149

150 **User evaluation of the app**

151 We developed the evaluation form of 11 quantitative questions and three qualitative questions
152 based on Mobile App Rating Scale (MARS) ²² and Standardized User Experience Percentile
153 Rank Questionnaire (SUPR-Qm) ²³. MARS multidimensionally assess the quality of mobile
154 applications ²³ and was applied to studies such as dengue reporting and mapping, health
155 communication, and behavior modification mobile application ²⁴ and gamified pain
156 management mobile application ²⁵. SUPR-Qm was initially created to capture user experience
157 for website but was later adapted to measure user experience for mobile application ²³. The
158 evaluation form of 11 quantitative questions measured the engagement, functionality,
159 aesthetic, information and acceptability of the PesTrapp mobile app users. Ten questions
160 were adapted from MARS and one integrability question was extracted from SUPR-Qm.
161 Each item adheres to 5-point scale (1-inadequate, 2-Poor, 3-Acceptable, 4-Good, 5-
162 Excellent). Data were summarized as mean and standard deviation for each item and category
163 that were then described accordingly. The evaluation form of three qualitative questions
164 assessed the appreciation of app, usage of features and suggestion to improve the app.

165

166 **RESULTS**

167

168 **User experience using the app**

169 Project leader first added user login for the team members in the project. Site details and
170 number of ovitraps deployed were entered accordingly in PesTrapp. It was found useful as
171 early notification to medical entomologists' team prior to placement of ovitraps in field.
172 Home dwellers were well informed with the ovitrapping procedure. Two ovitraps - indoor
173 and outdoor - were deployed at each house once permission was granted by the home
174 dwellers. Following that, respective details of house address and description of located
175 ovitraps were filled in accordingly. Once ovitraps were located outdoor and indoor, an image
176 of deployed ovitraps was captured and location was recorded with the best accuracy level. All
177 details were saved by clicking the "Save Data" button and then it is ready for next
178 deployment of ovitraps. In total, 60 ovitraps were deployed per sites and were collected after
179 5 days in field for the oviposition process. Digital records of ovitraps location details and
180 captured images during placement helped in tracking ovitraps during collection.

181

182 After five days of deployment in the field, the ovitraps were collected according to the
183 recorded ovitraps data. By clicking through the "Collection of Ovitraps" button, the recorded
184 study sites were listed in the collection listing. During the collection process, the location of
185 the deployed ovitraps were confirmed through the captured images and ovitraps location
186 coordinates on "Show Map" page. Recovered ovitraps were recorded as "Recovered", while
187 missing or tampered ovitraps were recorded as "Not Recovered". The number of recovered
188 ovitraps varied according to sites, for i.e. Gombak district, 58/60 ovitraps and 54/60 ovitraps
189 were collected at Apartment Bukit Baru and Kampung Sungai Chinchin respectively.
190 Meanwhile for Hulu Langat district, 57/60 ovitraps, 52/60 ovitraps, 56/60 ovitraps and 50/60
191 ovitraps were collected at Kampung Baru Ampang, Kampung Padang, Kampung Jawa and
192 Bandar Mahkota respectively. The collected ovitraps were then brought back to the
193 laboratory for identification of species process.

194

195 Collected mosquito larvae of L3 stage were identified using compound microscope after five
196 days of collection. Identification listing based on study sites were automatically generated in
197 the PesTrapp by clicking the “Identification of Species” button. The identified larvae were
198 pooled according to their species of either *Aedes aegypti* or *Aedes albopictus* and the number
199 of collected larvae were recorded in the PesTrapp. The total number of recovered ovitraps,
200 ovitrap index and mean larvae per recovered ovitrap for both indoor and outdoor by species
201 were automatically generated in the “Report” section in the PesTrapp. Overall, ovitrapping
202 method that involves collection and placement of ovitraps in field; and processing ovitraps in
203 laboratory were conducted in a timely manner using PesTrapp mobile application.

204

205 **Preliminary user evaluation of the app**

206 Seven project users who used the PesTrapp mobile app evaluated the mobile app on 21 July
207 2020 after using the app for at least one month. Table 1 showed the profiles of users as 7
208 young adults (four female, three male) from age 24 to 36, with a mean age of 27.3 years
209 ($SD=4.1$ years) and one of them was the project principal investigator. Most users used
210 project phone to run the app one or more times per week (71%) and worked in both field and
211 laboratory work (86%). The months of experience in project were mixed with the mean of
212 24.3 months ($SD=16.2$).

213

214 The mean evaluation score was 4.0 ($SD=0.6$) and ranged from 3.4 to 4.6 out of 5.0. The 2-
215 item “information quality” subscale assesses the achievable goals and visual explanation of
216 concepts through images and maps, scored the highest with a mean of 4.4 ($SD=0.6$) as shown
217 in Table 2. The 2-item “acceptability” subscale scored a mean of 4.2 ($SD=0.8$). All users
218 would recommend this app to people who might benefit from it. Most of the users (4/7) rated

219 the app four stars and above, while some users (3/7) rated the app three stars. Next, the
220 “aesthetic” subscale assesses the layout of mobile app obtained the mean of 3.9 ($SD=0.7$).
221 Concerning the 2-item “engagement” subscale with the mean of 3.8 ($SD=1$), target group
222 scored way higher than the interactivity, with the mean of 4.1 ($SD=0.9$) and mean of 3.4
223 ($SD=1.1$) respectively. Regarding the 4-item “functionality” subscale, with similar score to
224 engagement, users evaluated higher for ease of use, with the mean of 4.1 ($SD=0.9$) than the
225 performance of with the mean of 3.7 ($SD=1$), navigation with the mean of 3.6 ($SD=1.3$) and
226 integrability with the mean of 3.7 ($SD=0.8$).

227

228 The qualitative evaluation of users on the appreciation of the app were positive. Most users
229 praised the app for its efficiency in ovitrap monitoring especially the features of image
230 capturing and coordinates. *“Effective and time saving. Very useful to trace back the ovitraps
231 based on photos taken in field and recorded coordinates”*. *“Effectiveness and well help in
232 tracking the ovitrap”*. *“Ease the data collecting process and reduce the usage of paper”*.
233 *“Easy to use when collecting ovitraps during outdoor. Ease the process to find by looking at
234 picture taken.”*

235

236 All users reported frequently usage of the features, namely “deployment of ovitrap” and
237 “collection of ovitraps” in the app. *“The deployment and collection of ovitraps as I am
238 involved in a lot on fieldwork”*. One of the users also frequently used the “identification of
239 species” feature. *“Recording the location ovitrap in field and picture. Record larvae
240 species”*.

241

242 Users suggested few aspects to improve the app. Majority of users suggested the “edit”
243 button (5 of 7) and “back” button (4 of 7) to be added in the app. *“Add button edit and delete*

244 *to make sure the list of localities is move effective and easily to trace*". "Edit button". "Add
245 *back button*". Two of the seven users requested the photo upload features for reporting
246 purpose. "(1) option to upload photos from photo gallery (2) Edit button on homepage so can
247 *make amendment at the key-in data (3) 'back' button on every page, instead of keep going*
248 *back to the home page*". The other two users preferred the "delete" button to be added too.
249 "Add up edit, delete, back button and also add up block option for the high-rise building".
250 One of the users suggested the need for smooth interface for file management.

251

252 **Discussion**

253 A mobile app to monitor the deployment of ovitraps, collection of ovitraps, identification of
254 species and reporting is developed. The mobile app development process required the full
255 commitment from the medical entomologists, system analysts and mobile developers. The
256 main drive to the development of a comprehensive mobile app depends on to what extent the
257 system analysts and mobile developers understand the problem of current practices and to
258 what extent the users or stakeholders explain or highlight the problem. This is in line with
259 Pandey et al. who commented the process of mobile app models should be explanatory, as
260 much as possible ²⁶. Continuous discussion and review are essential. From our experience,
261 system analysts and mobile developers constantly had meetings and dialogues with the
262 medical entomologists to understand existing limitations of current practices, conceive,
263 design, develop and evaluate the prototypes. The prototype is then used and tested by the
264 project members during field and laboratory works.

265

266

267 The advancement in the internetworking and touch screen phone maximize the capability of
268 mobile app technology ²⁷. The centralised database manages bulk data in split seconds.

269 Monitoring of ovitraps with paper and not integrated are not recommended when the data
270 grows big with repetitive monitoring and large coverage extent. PesTrapp is specially
271 designed to integrate the mobile app technology with centralised database server via internet.
272 The data integrity is ensured even if the works in field or laboratory are handled by different
273 personnel. The data lost issue at individual desktop is avoided by storing data centrally in
274 dedicated and isolated database server away from existing project site due to improper
275 handling of data, on-site fire disaster and virus-infected desktop. The mobile apps with
276 centralised database are widely adopted by other mobile app studies such as mosquito vector
277 surveillance ²⁸, sentinel sites reporting ²⁹ and disease symptoms surveillance ³⁰.

278
279 The entomological field and laboratory work progress are easily monitored by project
280 manager with the mobile app. The different colour representations in the ‘ovitrapp status’ page
281 serve as work progress updates for the project manager. The completed (green), uncompleted
282 (white) and not recovered (red) representations inform the real-time status of the trap whether
283 it has been deployed or collected. The data transparency and forensic are guaranteed with the
284 information that provided by the timestamps and user location when a task is added,
285 modified, completed; when the app is installed and last launched in the device ³¹. In this case,
286 users are unable to tamper and modify the date of deployment, collection and species
287 identification.

288
289 The user evaluation obtained a high overall score and in most of its subscales. The mobile
290 app is well-accepted by the users that they would recommend this mobile app to people who
291 might benefit from it. All users agreed that the visual explanation of concepts with images
292 and maps were mostly clear, logical and correct. Most users found the app easy to use and the
293 content information were well-targeted and appropriate. The functions, buttons and menus of

294 the app worked timely. The functionality and engagement of the app were generally accepted
295 by the users. However, on “navigation”, three users took some time and effort to move
296 between screens uninterrupted. This is in line with the qualitative question 3 in which
297 majority users suggested to add “back” button in the app for easy navigation. The
298 “interactivity” subscale scored the lowest due to the availability of only basic interactive
299 features of user input and notification. Most users suggested to add “edit” button in the app in
300 the qualitative question 3. Hence, mobile developer added the functions based on the fed-
301 back from users.

302

303 The features of the PesTrapp improve user experience through visual graphic presentation.
304 Deploying trap is easy in the field, but collecting trap requires good recall memory after five
305 to seven days of deployment. The image and maps serve as a better graphical presentation for
306 the user to recall the location of trap, in line with the studies that discovered geographical
307 map increases recall of text ^{32,33} and graphic enhances perceptual and cognitive processes ³⁴
308 supported this idea. Besides, the real-time notification of alert ‘saved’ messages confirms the
309 interaction and responsiveness of the mobile app.

310

311 Protection of the security, privacy and confidentiality of the mobile app users should be
312 ensured. The users should be educated on the formal mobile policy including authentication,
313 integrity and data transfer ³⁵. The server should be regularly updated with the latest security
314 control. The mobile developers should minimize the mobile data access permissions to avoid
315 malicious virus such as spyware, Rootkit and Trojan horses ³⁶. The users should keep mobile
316 operating system up to date, encrypt mobile phone and use mobile security software ³⁷. To
317 protect the privacy of the residents, image of the position of trap should not be captured with

318 the residents and inside the house without permission from the residents. The access to the
319 data should be protected with password.

320

321 The future directions to improve the app are the customization possibilities to other animal
322 trap setting studies and integration with other technologies. PesTrapp is potential to be
323 customised for different animal trapping studies such as flies, rats and squirrels by adjusting
324 the number of animal species and density index. Further research to integrate PesTrapp with
325 other technologies, ranging from the digital eggs counting ³⁸, larval image identification ³⁹,
326 species identification ⁴⁰, QR code/barcode ⁴¹ and climate data ^{42,43} are anticipated to improve
327 and extend its capabilities. Nevertheless, there should be a balance of cost and benefit in
328 applying new technologies to the existing low-cost intervention.

329

330 PesTrapp is a potential tool to gather species density data nationwide. Usually, in the
331 entomological studies, mosquito density index is segregated for local study area for
332 evaluating vector control interventions and larval survey during outbreak ⁴⁴⁻⁴⁶. Gathering the
333 mosquito density index gives a better understanding of the distribution and movement of
334 mosquitoes for macro- and micro-habitat studies. This mobile app is potential to be the data
335 gathering and managing tool towards big data era, likewise the social media gather user data
336 for business intelligence ⁴⁷ and web questionnaire gather research data for subject matter
337 analysis ^{48,49}. If PesTrapp is to be applied nationwide, its database could be linked to the
338 disease surveillance system and open source climate repository for integrating multiple ends -
339 entomology, epidemiology and climate for dengue transmission prediction ⁵⁰ for better
340 control measures to manage disease hotspot and handle outbreak.

341

342 There are some limitations of this mobile app. Firstly, PesTrapp is developed for Android
343 version phone, but not iOS phone. We are targeting Android phone as it is preferred by the
344 users with a larger market share of around 85.4% in year 2020 ¹⁶. Secondly, the GPS
345 satellites signal is undetectable inside building and generally poor in high-rise building. We
346 designed the capture of coordinates differently for the landed and high-rise building. For
347 high-rise, coordinates of ovitraps were not mandatory due to poor signal of GPS, whereas for
348 landed houses, each ovitrap should be reported its coordinates. Nevertheless, record of levels
349 and blocks are essential for high-rise building.

350

351 **Conclusions**

352 PesTrapp exhibits the potential to transform conventional trapping method to real-time trap
353 managing intervention. The commitment from both users and developers in translating
354 problem-solving ideas into solution, designing, implementing and testing the proposed app is
355 essential. With the real-time trap setting and collecting mobile app, centralised and organized
356 managing of the density of species contribute to strategic site selection for future vector
357 control interventions. Furthermore, the potential integration of the mobile app with other
358 digital platforms in vector control including disease surveillance, fogging monitoring system,
359 disease hotspot mapping system will enable better vector control management in handling
360 outbreak. Future works will be the enhancement of the features of mobile app and
361 customization of the application to other potential animal trap studies.

362

363 **List of abbreviations**

364 GPS: Global Positioning System; CDC: Centers for Disease Control and Prevention; app:
365 application; ITEX: International Invention, Innovation & Technology Exhibition, Malaysia;
366 FR: functional requirements; NFR: non-functional requirements; UI: user interface; API:

367 Application Programming Interface; MARS: Mobile App Rating Scale; SUPR-Qm:
368 Standardized User Experience Percentile Rank Questionnaire

369

370 **Declarations**

371 **Acknowledgments**

372 We would like to thank the Director General of Health Malaysia and the director, Institute for
373 Medical Research (IMR) for their permission to publish this article. This work was supported
374 by Ministry of Health Research Grant (NMRR-18-12-39653). Special appreciation is
375 extended to all Medical Entomology Unit staff for their support during this study.

376

377 **Authors' contributions**

378 CYL RR MKCI designed the study together. CYL and RR drafted the manuscript and
379 finalised it with MKCI SFFF NAN MZT NWA LHL provided feedback on the manuscript.
380 MKCI developed the mobile application with the assistance from MZTH. RR led the field
381 and laboratory works and worked with SFFF NAN KAM MIYU in data collection, data
382 assurance and coordination of the study. MKCI CYL led the mobile app testing and
383 evaluation. LKH and CYL analysed and interpreted the user questionnaire data. All authors
384 have read and approved the final manuscript.

385

386 **Funding**

387 This study was funded by the Ministry of Health Research Grant.

388

389 **Availability of data and materials**

390 The datasets used and analysed during the current study are available from the corresponding
391 author on reasonable request.

392

393 **Ethics approval and consent to participate**

394 Ethical approval protocol from the Medical Research and Ethics Committee (MREC),
395 Ministry of Health Malaysia was followed (reference number KKM/NIHSEC/P18-668(4)).
396 Written informed consent was obtained from users who consented to take part in the survey.

397

398 **Consent for publication**

399 Not applicable.

400

401 **Competing interests**

402 The authors declare no competing of interests.

403

404 **Figures**

405 Fig. 1. Screen layouts of the PesTrapp for preparation and deployment of ovitraps process

406 Fig. 2. Screen layouts of the PesTrapp for collection of ovitraps and identification of species
407 process

408 Fig. 3. Screen layouts of the PesTrapp for reports process

409

410 **References**

- 411 1. Kilpatrick AM, Randolph SE. Drivers, dynamics, and control of emerging vector-borne
412 zoonotic diseases. *Lancet*. 2012;380(9857):1946-1955. doi:[https://doi.org/10.1016/S0140-](https://doi.org/10.1016/S0140-6736(12)61151-9)
413 [6736\(12\)61151-9](https://doi.org/10.1016/S0140-6736(12)61151-9)
- 414 2. Chang MS, Christophel EM, Gopinath D, et al. Challenges and future perspective for dengue
415 vector control in the Western Pacific Region. *West Pacific Surveill response J WPSAR*.

- 416 2011;2(2):9-16. doi:10.5365/WPSAR.2010.1.1.012
- 417 3. Lee HL. Aedes ovitrap and larval survey in several suburban communities in Selangor
418 Malaysia. *Mosquito-Borne Dis Bull.* 1999;9:9-15.
- 419 4. Mogi M, Choochote W, Khamboonruang C, Suwanpanit P. Applicability of presence–absence
420 and sequential sampling for ovitrap surveillance of Aedes (Diptera: Culicidae) in Chiang Mai,
421 northern Thailand. *J Med Entomol.* 1990;27(4):509-514.
- 422 5. Lee HL. Sequential sampling: its application in ovitrap surveillance of Aedes (Diptera:
423 Culicidae) in Selangor, Malaysia. *Trop Biomed.* 1992;9:29.
- 424 6. Eiran B-D, Earle DM. Small animal trap. February 2017.
- 425 7. Loughlin D. Developments in the world of insect detection. *Int Pest Control.* 2013;55(2):88.
- 426 8. Freudenberg JR, Diller CD, Smyth KS. Analyzing images of pests using a mobile device
427 application. September 2019.
- 428 9. Bateman HL, Lindquist TE, Whitehouse R, Gonzalez MM. Mobile application for wildlife
429 capture–mark–recapture data collection and query. *Wildl Soc Bull.* 2013;37(4):838-845.
- 430 10. Global Health D of PD and M. Epi Info Vector Surveillance Application. Centers for Disease
431 Control and Prevention. https://www.cdc.gov/parasites/education_training/epi_info_app.html.
432 Published 2017. Accessed October 7, 2020.
- 433 11. Gupta V, Chopra RK, Chauhan DS. Status of Non-Functional Requirements in Mobile
434 Application Development: An Empirical Study. *J Inf Technol Res.* 2017;10(1):59-84.
- 435 12. Peischl B, Ferk M, Holzinger A. The fine art of user-centered software development. *Softw*
436 *Qual J.* 2015;23(3):509-536. doi:10.1007/s11219-014-9239-1
- 437 13. Olsina L, Becker P. Linking business and information need goals with functional and non-
438 functional requirements. In: *Proceed. of the XXI Conferencia Iberoamericana En Software*
439 *Engineering (CIBSE'18), Bogotá, Colombia, Published by Curran Associates.* ; 2018:381-394.
- 440 14. Chung L, Nixon BA, Yu E, Mylopoulos J. *Non-Functional Requirements in Software*
441 *Engineering.* Vol 5. Springer Science & Business Media; 2012.
- 442 15. Alliance OH. Android. https://www.openhandsetalliance.com/android_overview.html.
443 Published 2010. Accessed May 5, 2020.

- 444 16. Chau, Melissa; Reith R. Smartphone Market Share. IDC Corporate USA.
445 <https://www.idc.com/promo/smartphone-market-share/os>. Published 2020. Accessed July 7,
446 2020.
- 447 17. Group TP. PHP. <https://www.php.net/>. Published 2001. Accessed April 3, 2020.
- 448 18. Corporation O. MySQL. <https://www.mysql.com/>. Accessed July 8, 2020.
- 449 19. Foundation AS. Apache Cordova. <https://cordova.apache.org/>. Published 2020. Accessed May
450 4, 2020.
- 451 20. Team M x OU. Onsen UI. <https://onsen.io>. Accessed July 8, 2020.
- 452 21. Developers G. Google Firebase Cloud Messaging. [https://firebase.google.com/products/cloud-](https://firebase.google.com/products/cloud-messaging)
453 [messaging](https://firebase.google.com/products/cloud-messaging). Published 2020. Accessed July 5, 2020.
- 454 22. Stoyanov SR, Hides L, Kavanagh DJ, Zelenko O, Tjondronegoro D, Mani M. Mobile App
455 Rating Scale: A New Tool for Assessing the Quality of Health Mobile Apps. *JMIR mHealth*
456 *uHealth*. 2015;3(1):e27. doi:10.2196/mhealth.3422
- 457 23. Sauro J, Zarolia P. SUPR-Qm: a questionnaire to measure the mobile app user experience. *J*
458 *Usability Stud*. 2017;13(1):17-37.
- 459 24. Karita T, Francisco ME, Watanabe K. An Integrated mHealth App for Dengue Reporting and
460 Mapping, Health Communication, and Behavior Modification: Development and Assessment
461 of Mozzify. *JMIR Form Res*. 2020;4(1):e16424.
- 462 25. Hoffmann A, Faust-Christmann CA, Zolynski G, Bleser G. Toward Gamified Pain
463 Management Apps: Mobile Application Rating Scale–Based Quality Assessment of Pain-
464 Mentor’s First Prototype Through an Expert Study. *JMIR Form Res*. 2020;4(5):e13170.
- 465 26. Pandey M, Litoriya R, Pandey P. Validation of existing software effort estimation techniques
466 in context with mobile software applications. *Wirel Pers Commun*. 2020;110(4):1659-1677.
- 467 27. Tracy K. Mobile Application Development Experiences on Apple’s iOS and Android OS.
468 *Potentials, IEEE*. 2012;31:30-34. doi:10.1109/MPOT.2011.2182571
- 469 28. Lozano-Fuentes S, Ghosh S, Bieman JM, et al. Using Cell Phones for Mosquito Vector
470 Surveillance and Control. In: *SEKE*. ; 2012:763-767.
- 471 29. Lwin MO, Jayasundar K, Sheldenkar A, et al. Lessons from the implementation of Mo-Buzz, a

- 472 mobile pandemic surveillance system for dengue. *JMIR public Heal Surveill.* 2017;3(4):e65.
- 473 30. Stanton MC, Mkwanda SZ, Debrah AY, et al. Developing a community-led SMS reporting
474 tool for the rapid assessment of lymphatic filariasis morbidity burden: case studies from
475 Malawi and Ghana. *BMC Infect Dis.* 2015;15(1):214. doi:10.1186/s12879-015-0946-4
- 476 31. Azfar A, Choo K-KR, Liu L. Forensic taxonomy of android productivity apps. *Multimed Tools*
477 *Appl.* 2017;76(3):3313-3341.
- 478 32. Kulhavy RW, Stock WA, Kealy WA. How geographic maps increase recall of instructional
479 text. *Educ Technol Res Dev.* 1993;41(4):47-62.
- 480 33. Yen J, Lee C, Chen I. The effects of image-based concept mapping on the learning outcomes
481 and cognitive processes of mobile learners. *Br J Educ Technol.* 2012;43(2):307-320.
- 482 34. Winn W. Contributions of perceptual and cognitive processes to the comprehension of
483 graphics. In: *Advances in Psychology.* Vol 108. Elsevier; 1994:3-27.
- 484 35. Martínez-Pérez B, De La Torre-Díez I, López-Coronado M. Privacy and security in mobile
485 health apps: a review and recommendations. *J Med Syst.* 2015;39(1):181.
- 486 36. Zhu H, Xiong H, Ge Y, Chen E. Mobile app recommendations with security and privacy
487 awareness. In: *Proceedings of the 20th ACM SIGKDD International Conference on*
488 *Knowledge Discovery and Data Mining.* ; 2014:951-960.
- 489 37. Ahvanooy MT, Li Q, Rabbani M, Rajput AR. A survey on smartphones security: software
490 vulnerabilities, malware, and attacks. *arXiv Prepr arXiv200109406.* 2020.
- 491 38. Brasil LM, Gomes MMF, Miosso CJ, da Silva MM, Amvame-Nze GD. Web platform using
492 digital image processing and geographic information system tools: a Brazilian case study on
493 dengue. *Biomed Eng Online.* 2015;14(1):69. doi:10.1186/s12938-015-0052-2
- 494 39. Muñoz JP, Boger R, Dexter S, Low R. Mosquitoes and Public Health: Improving Data
495 Validation of Citizen Science Contributions Using Computer Vision. In: *Delivering Superior*
496 *Health and Wellness Management with IoT and Analytics.* Springer; 2020:469-493.
- 497 40. Sharma N, Colucci-Gray L, Siddharthan A, Comont R, van der Wal R. Designing online
498 species identification tools for biological recording: the impact on data quality and citizen
499 science learning. Roberts D, ed. *PeerJ.* 2019;6:e5965. doi:10.7717/peerj.5965

- 500 41. Boob A, Shinde A, Rathod D, Gaikwad A. Qr Code based mobile app and business process
501 Integration. *Int J Multidiscip Curr Res*. 2014;2:1014-1017.
- 502 42. Cheong YL, Burkart K, Leitão PJ, Lakes T. Assessing weather effects on dengue disease in
503 Malaysia. *Int J Environ Res Public Health*. 2013;10(12). doi:10.3390/ijerph10126319
- 504 43. Jain R, Sontisirikit S, Iamsirithaworn S, Prendinger H. Prediction of dengue outbreaks based
505 on disease surveillance, meteorological and socio-economic data. *BMC Infect Dis*.
506 2019;19(1):272. doi:10.1186/s12879-019-3874-x
- 507 44. Ali R, Azmi RA, Ahmad NW, et al. Entomological Surveillance Associated with Human Zika
508 Cases in Miri Sarawak, Malaysia. *Am J Trop Med Hyg*. 2020;102(5):964-970.
- 509 45. Rosilawati R, Lee HL, Nazni WA, et al. Pyrethroid resistance status of *Aedes (Stegomyia)*
510 *aegypti* (Linnaeus) from dengue endemic areas in Peninsular Malaysia. *IIUM Med J Malaysia*.
511 2017;16(2).
- 512 46. Rozilawati H, Tanaselvi K, Nazni WA, et al. Surveillance of *Aedes albopictus* Skuse breeding
513 preference in selected dengue outbreak localities, peninsular Malaysia. *Trop Biomed*.
514 2015;32(1):49-64.
- 515 47. Goncalves M, Cornelius Smith E. Social media as a data gathering tool for international
516 business qualitative research: opportunities and challenges. *J Transnatl Manag*. 2018;23(2-
517 3):66-97. doi:10.1080/15475778.2018.1475181
- 518 48. van Gelder MMHJ, Bretveld RW, Roeleveld N. Web-based Questionnaires: The Future in
519 Epidemiology? *Am J Epidemiol*. 2010;172(11):1292-1298. doi:10.1093/aje/kwq291
- 520 49. Gosling SD, Vazire S, Srivastava S, John OP. Should we trust web-based studies? A
521 comparative analysis of six preconceptions about internet questionnaires. *Am Psychol*.
522 2004;59(2):93.
- 523 50. Manogaran G, Lopez D. Disease surveillance system for big climate data processing and
524 dengue transmission. In: *Climate Change and Environmental Concerns: Breakthroughs in*
525 *Research and Practice*. IGI Global; 2018:427-446.
- 526

527

528 **Tables**

529 Table 1. Sample Characteristics.

Variable	Frequency	Percent
Gender		
Female	4	57%
Male	3	43%
Project role		
Principal investigator	1	14%
Co-investigator	0	0%
Research assistant	6	86%
Use app on		
Own phone	2	29%
Project phone	5	71%
Work scope		
Field work	1	14%
Laboratory work	0	0%
Both field and laboratory work	6	86%
	Mean	SD
Age	27.3	4.1
Months in project	24.3	16.2

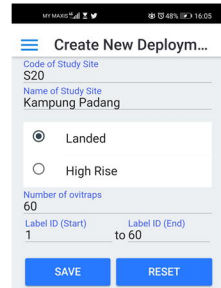
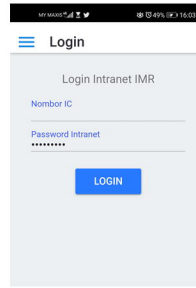
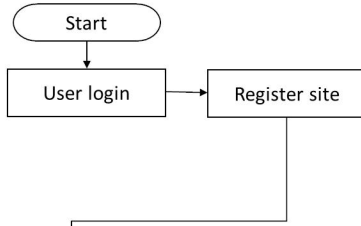
530

531 Table 2. Evaluation of item scores for PesTrapp application (n=7).

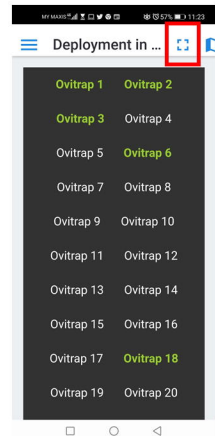
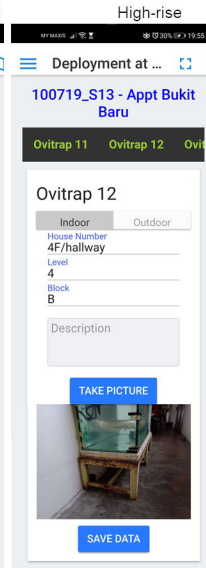
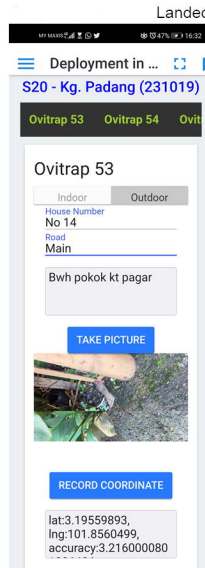
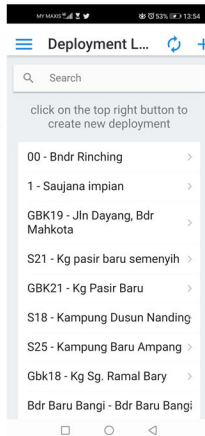
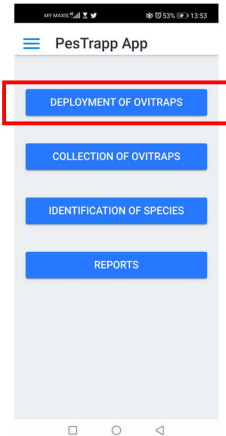
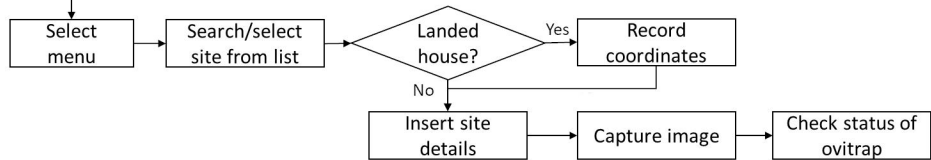
Subscale	Score Mean (SD)
Engagement	3.8 (1)
Target group	4.1 (0.9)
Interactivity	3.4 (1.1)
Functionality	3.8 (1)
Ease of use	4.1 (0.9)
Performance	3.7 (1)
Navigation	3.6 (1.3)
Integrability	3.7 (0.8)
Aesthetic	3.9 (0.7)
Layout	3.9 (0.7)
Information quality	4.4 (0.6)
Goals	4.3 (0.8)
Visual Information	4.4 (0.5)
Acceptability	4.2 (0.8)
Recommendation	4.6 (0.5)
Rating	3.8 (0.9)

532

Preparation

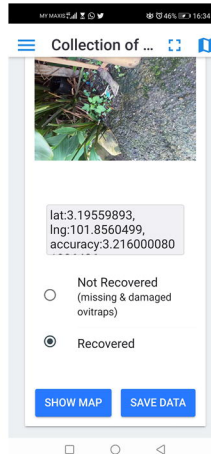
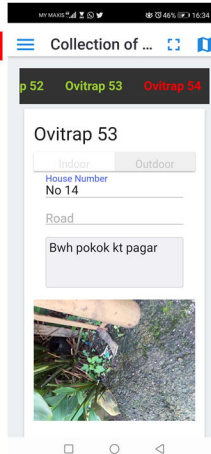
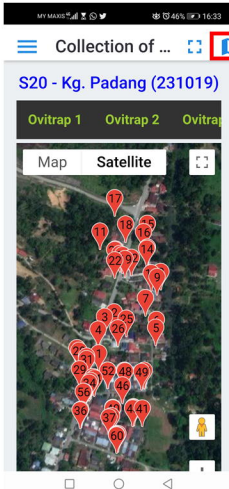
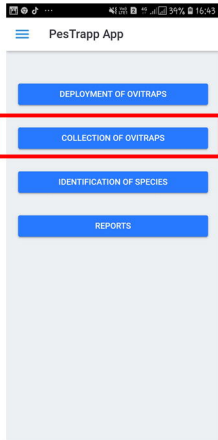
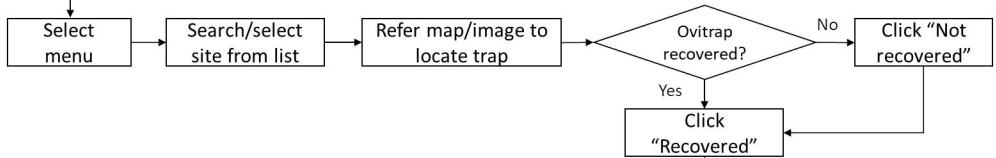


Deployment of ovitrap

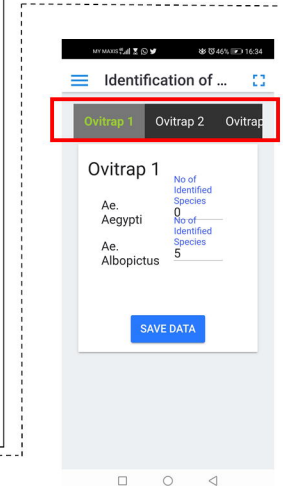


After five days of deployment of ovttraps

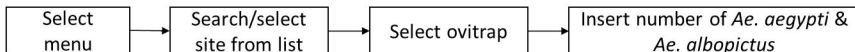
Collection of ovttraps



After five days



Identification of species



Identification of species

Reports

