

Supplementary material

SUPPLEMENT 1. CIDI-SF LIFETIME DEPRESSION CRITERIA	2
SUPPLEMENT 2. ICD-10 CODES FOR DEPRESSION	3
SUPPLEMENT 3. SMITH ET AL. DEPRESSION CRITERIA	4
SUPPLEMENT 4. PSYCHOTROPIC MEDICATION CODES	5
SUPPLEMENT 5. ANTIHYPERTENSIVE MEDICATION CODES	7
SUPPLEMENT 6. SAMPLE CHARACTERISTICS	8
SUPPLEMENT 7. ADJUSTED GAMS	9
7A. AGE-RELATED CHANGES IN FEMALES	9
7B. AGE-RELATED CHANGES IN MALES	11
SUPPLEMENT 8. SENSITIVITY ANALYSES	13
8A. CASE-CONTROL NUMBERS.....	13
8B. CASE CONTROL DIFFERENCES.....	14
8C. AGE-RELATED CHANGES IN FEMALES.....	15
8D. AGE-RELATED CHANGES IN MALES	17

Supplement 1. CIDI-SF lifetime depression criteria

Supplement table 1. Case definition lifetime depression

Supplement table 1. Case definition lifetime depression	Definition and UK Biobank data fields
<p>Lifetime depression (case): At least one core symptom of major depressive disorder, most or all of the day on most or all days for a two-week period, with at least five non-core depressive symptoms that represent a change from usual occurring over the same timescale, with some or a lot of impairment.</p> <p>No record of psychosis or bipolar disorder.</p>	<p>(“Ever had prolonged feelings of sadness or depression” (20446) = Yes OR “Ever had prolonged loss of interest in normal activities” (20441) = Yes) AND “Fraction of day affected during worst episode of depression” (20436) = Most of day or All day long AND “Frequency of depressed days during worst episode of depression” (20439) = “Almost every day” or “Every day” AND “Impact on normal roles during worst period of depression” (20440) = “Somewhat” or “A lot” AND Total number of symptoms endorsed (core and others) \geq5: “Ever had prolonged feelings of sadness or depression” (core) (20446), “Ever had prolonged loss of interest in normal activities” (core) (20441), “Feelings of tiredness during worst episode of depression” (20449), “Weight change during worst episode of depression” (20536), “Did your sleep change?” (20532), “Difficulty concentrating during worst depression” (20435), “Feelings of worthlessness during worst period of depression” (20450), “Thoughts of death during worst depression” (20437) AND No self-reported psychosis or mania for “Mental health problems ever diagnosed by a professional” (20544) AND No self-reported mania/bipolar disorder/manic depression or schizophrenia for “Non-cancer illness” (20002) AND No ICD-10 code for “manic episode” or “bipolar affective disorder” (F30-F31) or “schizophrenia, schizotypal and delusional disorders” (F20-F29) AND No probable bipolar disorder (20126) according to Smith et al. (2013) AND No bipolar disorder record according to the MHQ AND No primary care record of bipolar disorder or psychosis</p>
<p><i>Note:</i> Criteria for lifetime depression adapted from Davis et al. (2020), doi: 10.1192/bjo.2019.100. CIDI-SF = Composite International Diagnostic Interview Short Form; ICD-10 = International Classification of Diseases, Tenth Revision; MHQ = mental health questionnaire.</p>	

Supplement 2. ICD-10 codes for depression

Depressive episode

- F32.0 Mild depressive episode
- F32.1 Moderate depressive episode
- F32.2 Severe depressive episode without psychotic symptoms
- F32.3 Severe depressive episode with psychotic symptoms
- F32.8 Other depressive episodes
- F32.9 Depressive episode, unspecified

Recurrent depressive disorder

- F33.0 Recurrent depressive disorder, current episode mild
- F33.1 Recurrent depressive disorder, current episode moderate
- F33.2 Recurrent depressive disorder, current episode severe without psychotic symptoms
- F33.3 Recurrent depressive disorder, current episode severe with psychotic symptoms
- F33.4 Recurrent depressive disorder, currently in remission
- F33.8 Other recurrent depressive disorders
- F33.9 Recurrent depressive disorder, unspecified

Supplement 3. Smith et al. depression criteria

Depression (adapted from Smith et al. (2013), doi: 10.1371/journal.pone.0075362).

3. Single probable episode of major depression:

4598 ever depressed/down for a whole week; plus 4609 at least two weeks duration; plus 4620 only one episode, plus 2090 ever seen a GP or 2100 a psychiatrist for nerves, anxiety, depression
OR
4631 ever anhedonic (unenthusiasm/uninterest) for a whole week; plus 5375 at least two weeks; plus 5386 only one episode; plus 2090 ever seen a GP or 2100 a psychiatrist for nerves, anxiety, depression.

4. Probable recurrent major depression (moderate):

4598 ever depressed/down for a whole week; plus 4609 at least two weeks duration; plus 4620 at least two episodes; plus 2090 ever seen a GP (but not a psychiatrist) for nerves, anxiety, depression
OR
4631 ever anhedonic (unenthusiasm/uninterest) for a whole week; plus 5375 at least two weeks; plus 5386 at least two episodes; plus 2090 ever seen a GP (but not a psychiatrist) for nerves, anxiety, depression.

5. Probable recurrent major depression (severe):

4598 ever depressed/down for a whole week; plus 4609 at least two weeks duration; plus 4620 at least two episodes; plus 2100 ever seen a psychiatrist for nerves, anxiety, depression
OR
4631 ever anhedonic (unenthusiasm/uninterest) for a whole week; plus 5375 at least two weeks; plus 5386 at least two episodes; plus 2100 ever seen a psychiatrist for nerves, anxiety, depression.

Supplement 4. Psychotropic medication codes

Supplement table 2. Psychotropic medication codes

UK Biobank code	Drug name
1140879616	Amitriptyline
1140921600	Citalopram
1140879540	Fluoxetine
1140867878	Sertraline
1140916282	Venlafaxine
1140909806	Dosulepin
1140867888	Paroxetine
1141152732	Mirtazapine
1141180212	Escitalopram
1140879634	Trazodone
1140867876	Prozac
1140882236	Seroxat
1141190158	Ciprallex
1141200564	Duloxetine
1140867726	Lofepramine
1140879620	Clomipramine
1140867818	Nortriptyline
1140879630	Imipramine
1140879628	Dothiepin
1141151946	Cipramil
1140867948	Amitriptyline
1140867624	Prothiaden
1140867756	Trimipramine
1140867884	Lustral
1141151978	Reboxetine
1141152736	Zispin
1141201834	Cymbalta
1140867690	Anafranil
1140867640	Doxepin
1140867920	Moclobemide
1140867850	Phenelzine
1140879544	Fluvoxamine
1141200570	Yentreve
1140867934	Triptafen
1140867758	Surmontil
1140867914	Tranlycypromine
1140867820	Allegron
1141151982	Edronax
1140882244	Molipaxin
1140879556	Mianserin
1140867852	Nardil
1140867860	Faverin
1140917460	Nefazodone
1140867938	Amitriptyline+Chlordiazepoxide
1140867856	Isocarboxazid
1140867922	Manerix
1140910820	Maoi
1140882312	Sinequan
1140867944	Tranlycypromine+Trifluoperazine
1140867784	Ludiomil
1140867812	Norval
1140867668	Tryptizol
1140867940*	Fluphenazine hydrochloride+Nortriptyline 1.5mg/30mg tablet
1140867942*	Fluphenazine hcl+Nortriptyline 500micrograms/10mg tablet
1140928916	Olanzapine
1141152848	Quetiapine
1140867444	Risperidone
1140879658	Chlorpromazine
1140868120	Trifluoperazine
1141153490	Amisulpride
1140867304	Sulpiride
1141152860	Seroquel
1140867168	Haloperidol
1141195974	Aripiprazole
1140867244	Stelazine
1140867152	Depixol
1140909800	Flupentixol
1140867420	Clozapine
1140879746	Promazine
1141177762	Risperdal
1140867456	Modecate
1140867952	Fluanxol
1140867150	Flupenthixol
1141167976	Zyprexa

1140882100	Zuclopenthixol
1140867342	Clopixol
1140863416	Largactil
1141202024	Abilify
1140882098	Fluphenazine
1140867184	Haldol
1140867092	Serenace
1140882320	Clozaril
1140910358	Cpz
1140867208	Perphenazine
1140909802	Levomepromazine
1140867134	Pericyazine
1140867306	Dolmatil
1140867210	Fentazin
1140867398	Fluphenazine
1140867078	Benperidol
1140867218	Pimozide
1141201792	Zaponex
1141200458	Denzapine
1140867136	Neulactil
1140879750	Thioridazine
1140867180	Dozic
1140867546	Fluspirilene
1140928260	Panadeine
1140927956	Sertindole
<hr/>	
1140867490	Lithium product
1140867494	Camcolit 250 tablet
1140867498	Liskonum 450mg m/r tablet
1140867500	Phasal 300mg m/r tablet
1140867504	Priadel 200mg m/r tablet
1140867518	Litarex 564mg m/r tablet
1140867520	Li-liquid 5.4mmol/5ml oral solution

Note: Adapted from Davis et al. (2019), doi: 10.1002/mpr.1796. *medication code not included in Davis et al. (2019).

Supplement 5. Antihypertensive medication codes

Supplement table 3. Antihypertensive medication codes

UK Biobank code	Drug name
1140861848	Colestid 5g/sachet granules
1140861922	Lipid lowering drug
1140861924	Bezafibrate
1140861926	Bezalip 200mg tablet
1140861936	Questran 4g/sachet powder
1140861944	Clofibrate
1140861954	Fenofibrate
1140861958	Simvastatin
1140861970	Lipostat 10mg tablet
1140862026	Ciprofibrate
1140864592	Lescol 20mg capsule
1140881748	Zocor 10mg tablet
1140888590	Colestipol
1140888594	Fluvastatin
1140888648	Pravastatin
1140909780	Colestyramine
1141146138	Lipitor 10mg tablet
1141146234	Atorvastatin
1141157260	Bezafibrate product
1141162544	Lipantil micro 67mg capsule
1141172214	Supralip 160mg m/r tablet
1141180734	Colestyramine product
1141188146	Simvador 10mg tablet
1141192410	Rosuvastatin
1141192414	Crestor 10mg tablet
1141192736	Ezetimibe
1141192740	Ezetrol 10mg tablet
1141195196	Ranzolont 10mg tablet
1141200040	Zocor heart-pro 10mg tablet

Supplement 6. Sample characteristics

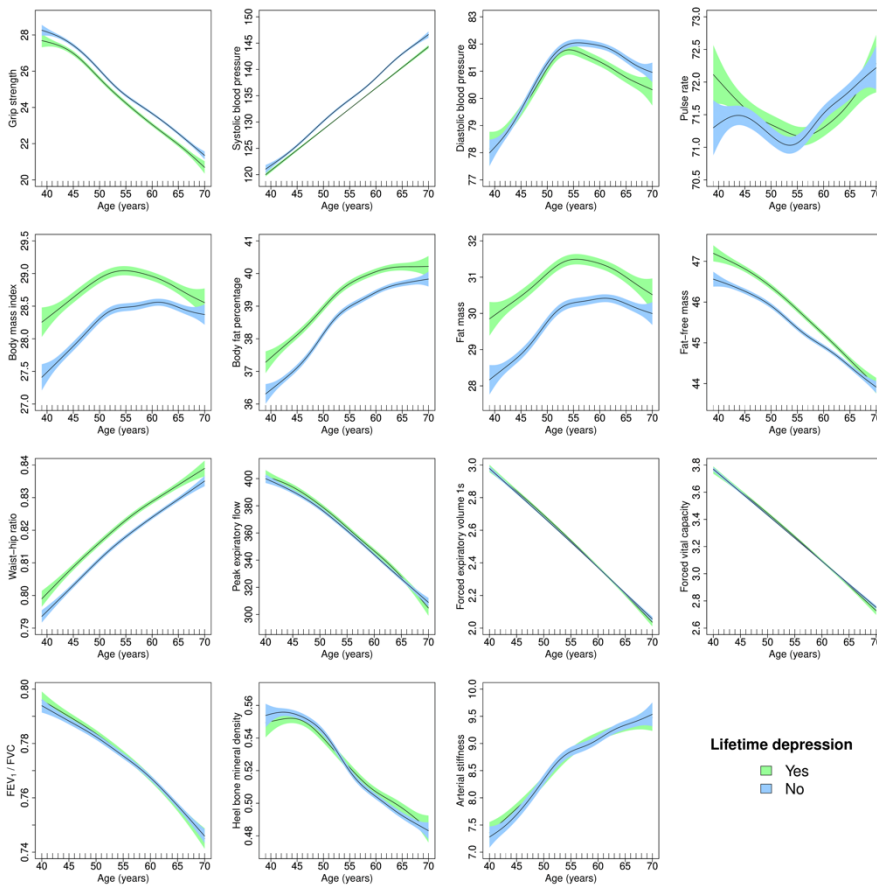
Supplement table 4. Sample characteristics

	Female			Male	
	Overall (N=502521)	Healthy control (N=123842)	Depression (N=56276)	Healthy control (N=131212)	Depression (N=31063)
Age					
Mean (SD)	56.53 (8.10)	55.90 (8.03)	54.74 (7.78)	56.37 (8.26)	55.71 (7.96)
Ethnicity					
White	472711 (94.1%)	117587 (94.9%)	54386 (96.6%)	125053 (95.3%)	30089 (96.9%)
Mixed-race	2958 (0.6%)	805 (0.7%)	434 (0.8%)	588 (0.4%)	145 (0.5%)
Asian	8061 (1.6%)	2096 (1.7%)	556 (1.0%)	1779 (1.4%)	195 (0.6%)
Black	9882 (2.0%)	1809 (1.5%)	459 (0.8%)	2518 (1.9%)	393 (1.3%)
Chinese	1574 (0.3%)	527 (0.4%)	91 (0.2%)	357 (0.3%)	37 (0.1%)
Other	4558 (0.9%)	1018 (0.8%)	350 (0.6%)	917 (0.7%)	204 (0.7%)
Prefer not to answer	1662 (0.3%)				
Do not know	217 (<0.1%)				
Missing	898 (0.2%)				
Household income¹					
Very low	97205 (19.3%)	26243 (21.2%)	13986 (24.9%)	21903 (16.7%)	7181 (23.1%)
Low	108177 (21.5%)	32464 (26.2%)	14751 (26.2%)	31452 (24.0%)	7472 (24.1%)
Middle	110774 (22.0%)	32735 (26.4%)	14575 (25.9%)	36631 (27.9%)	8233 (26.5%)
High	86269 (17.2%)	25352 (20.5%)	10605 (18.8%)	31999 (24.4%)	6599 (21.2%)
Very high	22930 (4.6%)	7048 (5.7%)	2359 (4.2%)	9227 (7.0%)	1578 (5.1%)
Prefer not to answer	49848 (9.9%)				
Do not know	21305 (4.2%)				
Missing	6013 (1.2%)				
Walking²					
Mean (SD)	5.39 (1.93)	5.48 (1.84)	5.35 (1.95)	5.31 (1.99)	5.23 (2.06)
Prefer not to answer	979 (0.2%)				
Unable to walk	1929 (0.4%)				
Do not know	6687 (1.3%)				
Missing	874 (0.2%)				
Moderate activity²					
Mean (SD)	3.63 (2.33)	3.62 (2.31)	3.51 (2.34)	3.59 (2.31)	3.46 (2.35)
Prefer not to answer	2273 (0.5%)				
Do not know	24120 (4.8%)				
Missing	878 (0.2%)				
Vigorous activity²					
Mean (SD)	1.84 (1.96)	1.73 (1.85)	1.61 (1.82)	2.10 (2.02)	1.95 (2.02)
Prefer not to answer	4116 (0.8%)				
Do not know	22582 (4.5%)				
Missing	878 (0.2%)				
Smoking status					
Never	273528 (54.4%)	77069 (62.2%)	30307 (53.9%)	67927 (51.8%)	13959 (44.9%)
Former	173064 (34.4%)	37682 (30.4%)	19633 (34.9%)	49044 (37.4%)	12473 (40.2%)
Current	52979 (10.5%)	9091 (7.3%)	6336 (11.3%)	14241 (10.9%)	4631 (14.9%)
Prefer not to answer	2059 (0.4%)				
Missing	891 (0.2%)				
Alcohol intake frequency					
Never	40645 (8.1%)	9217 (7.4%)	4658 (8.3%)	6290 (4.8%)	2323 (7.5%)
Special occasions	58011 (11.5%)	16310 (13.2%)	8361 (14.9%)	8259 (6.3%)	2436 (7.8%)
1-3/month	55856 (11.1%)	15862 (12.8%)	7869 (14.0%)	11184 (8.5%)	3054 (9.8%)
1-2/week	129294 (25.7%)	33072 (26.7%)	14017 (24.9%)	34139 (26.0%)	7516 (24.2%)
3-4/week	115443 (23.0%)	28093 (22.7%)	11628 (20.7%)	36606 (27.9%)	7587 (24.4%)
Daily/almost daily	101770 (20.3%)	21288 (17.2%)	9743 (17.3%)	34734 (26.5%)	8147 (26.2%)
Prefer not to answer	605 (0.1%)				
Missing	897 (0.2%)				
Sleep duration					
Mean (SD)	7.15 (1.11)	7.18 (1.00)	7.17 (1.17)	7.13 (0.99)	7.11 (1.21)
Prefer not to answer	386 (0.1%)				
Do not know	2943 (0.6%)				
Missing	887 (0.2%)				

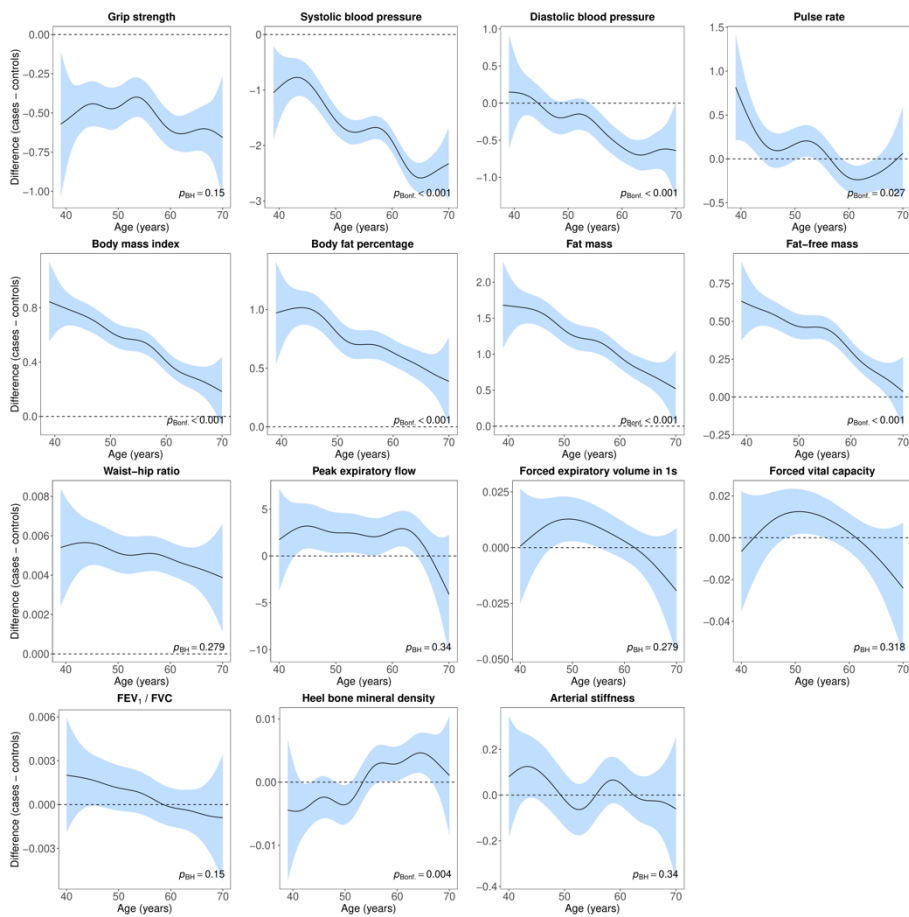
Note: Descriptive statistics for covariates based on main dataset $N=342,393$. ¹Annual household income groups: very low (<£18 000), low (£18 000–30 999), middle (£31 000–51 999), high (£52 000–100 000) and very high (>£100 000). ²number of days per week engaging in these activities for 10+ minutes continuously.

Supplement 7. Adjusted GAMs

7A. Age-related changes in females

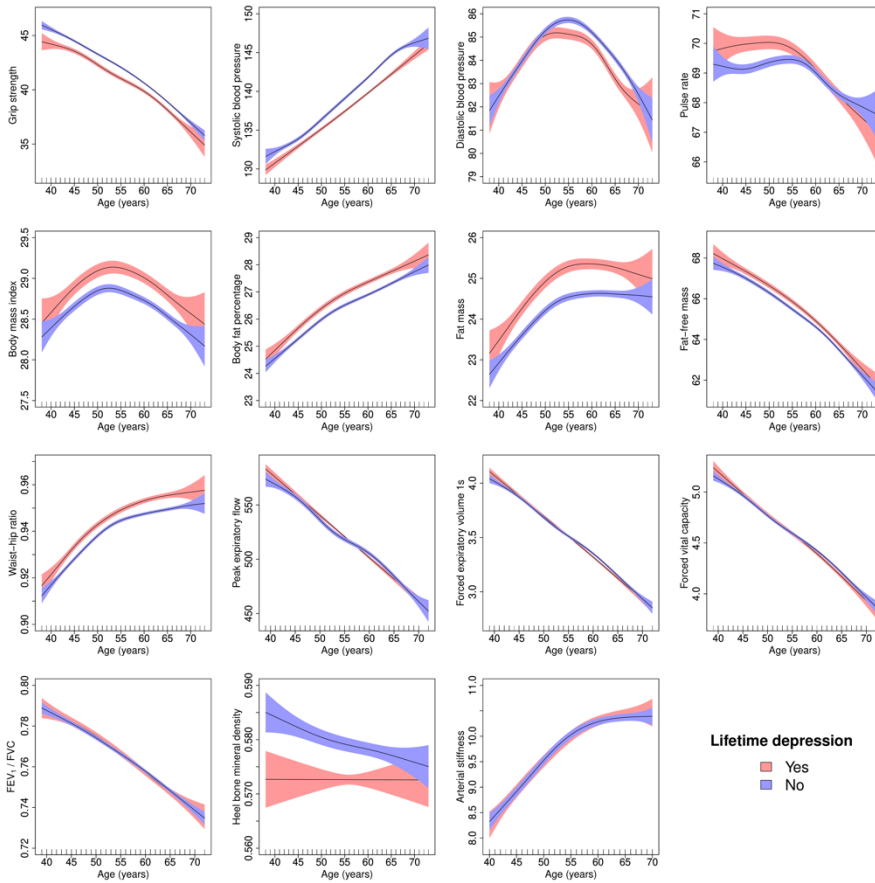


Supplement figure 1. Adjusted generalised additive models of age-related changes in physiological measures in females with lifetime depression and healthy controls. Models were adjusted for ethnicity (except lung function), gross annual household income, physical activity, smoking status, alcohol intake frequency, sleep duration and, for cardiovascular measures, current use of antihypertensive medications. The solid lines represent physiological measures against smoothing functions of age. The shaded areas correspond to approximate 95% confidence intervals ($\pm 2 \times$ standard error). FEV₁ = forced expiratory volume in one second; FVC = forced vital capacity.

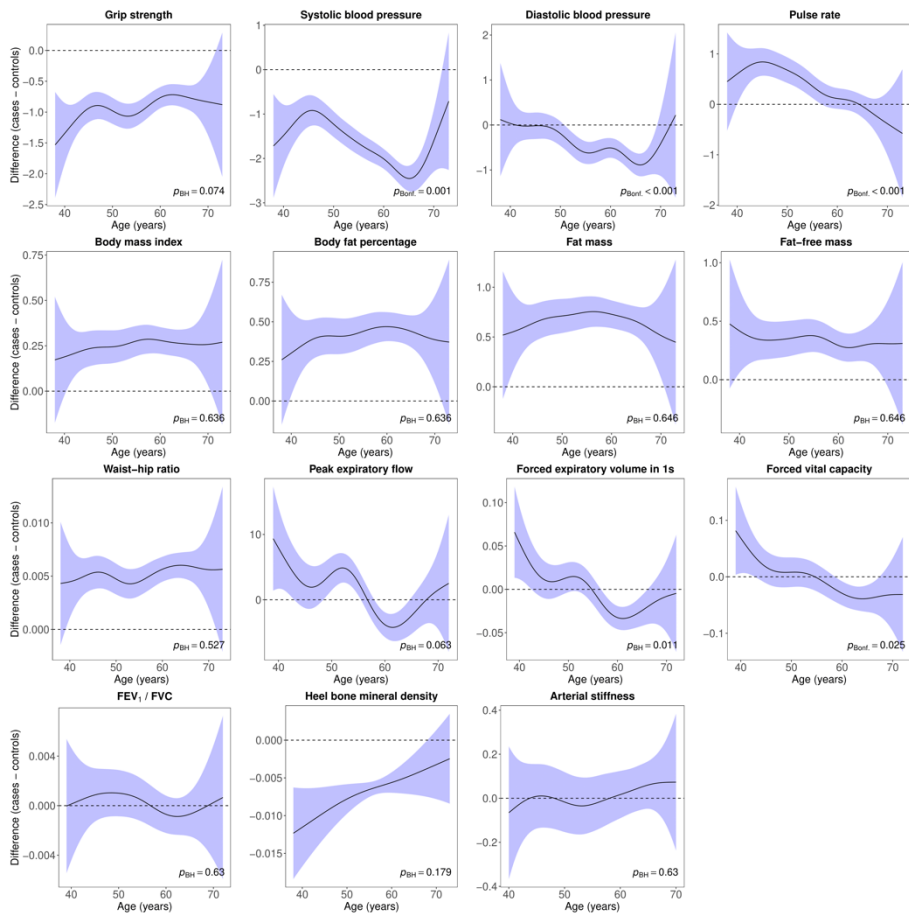


Supplement figure 2. Difference smooths comparing age-related changes in physiological measures of females with lifetime depression to healthy controls. Models were adjusted for ethnicity (except lung function), gross annual household income, physical activity, smoking status, alcohol intake frequency, sleep duration and, for cardiovascular measures, current use of antihypertensive medications. The shaded areas correspond to approximate 95% confidence intervals ($\pm 2 \times$ standard error). Negative values on the y-axes correspond to lower values in females with lifetime depression compared to healthy controls. The horizontal lines represent no difference between female cases and controls. FEV₁ = forced expiratory volume in one second; FVC = forced vital capacity; Bonf. = Bonferroni; BH = Benjamini & Hochberg.

7B. Age-related changes in males



Supplement figure 3. Adjusted generalised additive models of age-related changes in physiological measures in males with lifetime depression and healthy controls. Models were adjusted for ethnicity (except lung function), gross annual household income, physical activity, smoking status, alcohol intake frequency, sleep duration and, for cardiovascular measures, current use of antihypertensive medications. The solid lines represent physiological measures against smoothing functions of age. The shaded areas correspond to approximate 95% confidence intervals ($\pm 2 \times$ standard error). FEV₁ = forced expiratory volume in one second; FVC = forced vital capacity.



Supplement figure 4. Difference smooths comparing age-related changes in physiological measures of males with lifetime depression to healthy controls. Models were adjusted for ethnicity (except lung function), gross annual household income, physical activity, smoking status, alcohol intake frequency, sleep duration and, for cardiovascular measures, current use of antihypertensive medications. The shaded areas correspond to approximate 95% confidence intervals ($\pm 2 \times$ standard error). Negative values on the y-axes correspond to lower values in males with lifetime depression compared to healthy controls. The horizontal lines represent no difference between male cases and controls. FEV₁ = forced expiratory volume in one second; FVC = forced vital capacity; Bonf. = Bonferroni; BH = Benjamini & Hochberg.

Supplement 8. Sensitivity analyses

8A. Case-control numbers

Supplement table 5. Case-control numbers sensitivity analyses

Dataset	Sex	≥ 2 depression measures		CIDI-SF lifetime depression (MHQ)	
		Healthy control	Depression	Healthy control	Depression
Main dataset	Female	123842	23517	30113	20482
	Male	131212	11785	32776	9432
Lung function	Female	43133	8010	10750	7162
	Male	52359	4617	13586	3826
Bone mineral density	Female	85994	12219	19420	12907
	Male	89790	6075	21289	6005
Arterial stiffness	Female	38592	11525	10818	7688
	Male	42889	5899	11805	3528

Note: CIDI-SF = Composite International Diagnostic Interview Short Form; MHQ = mental health questionnaire.

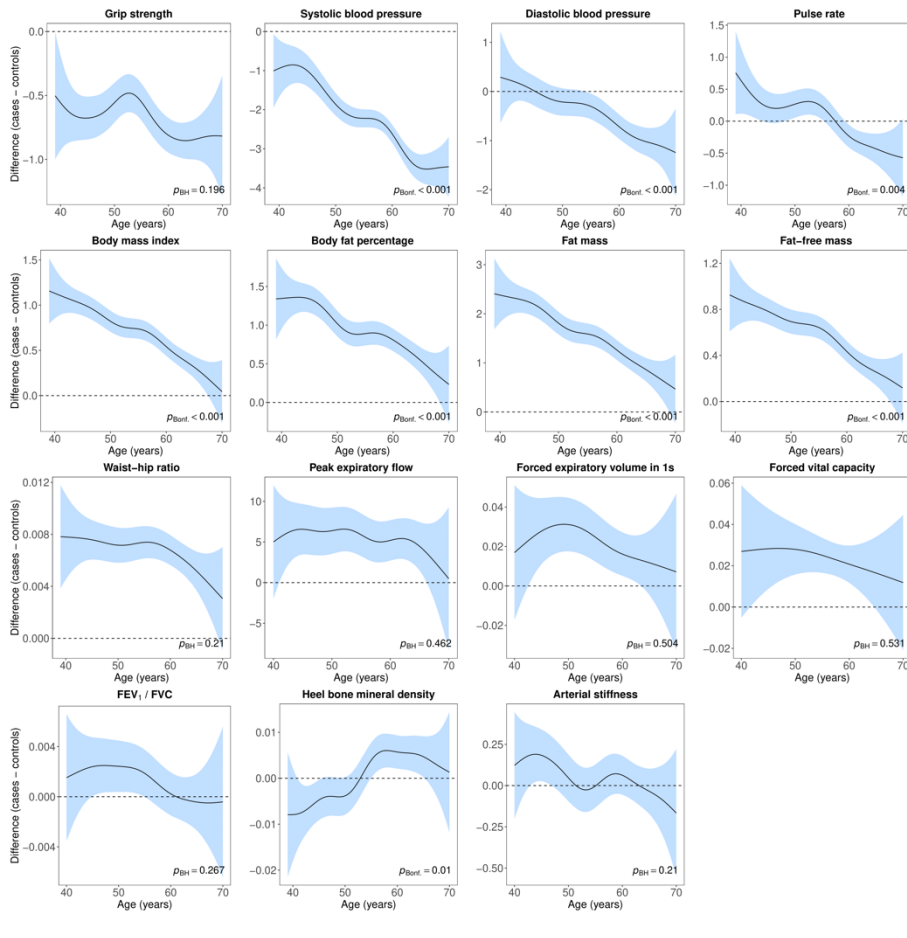
8B. Case control differences

Supplement table 6. Differences in physiological measures between individuals with lifetime depression and healthy controls

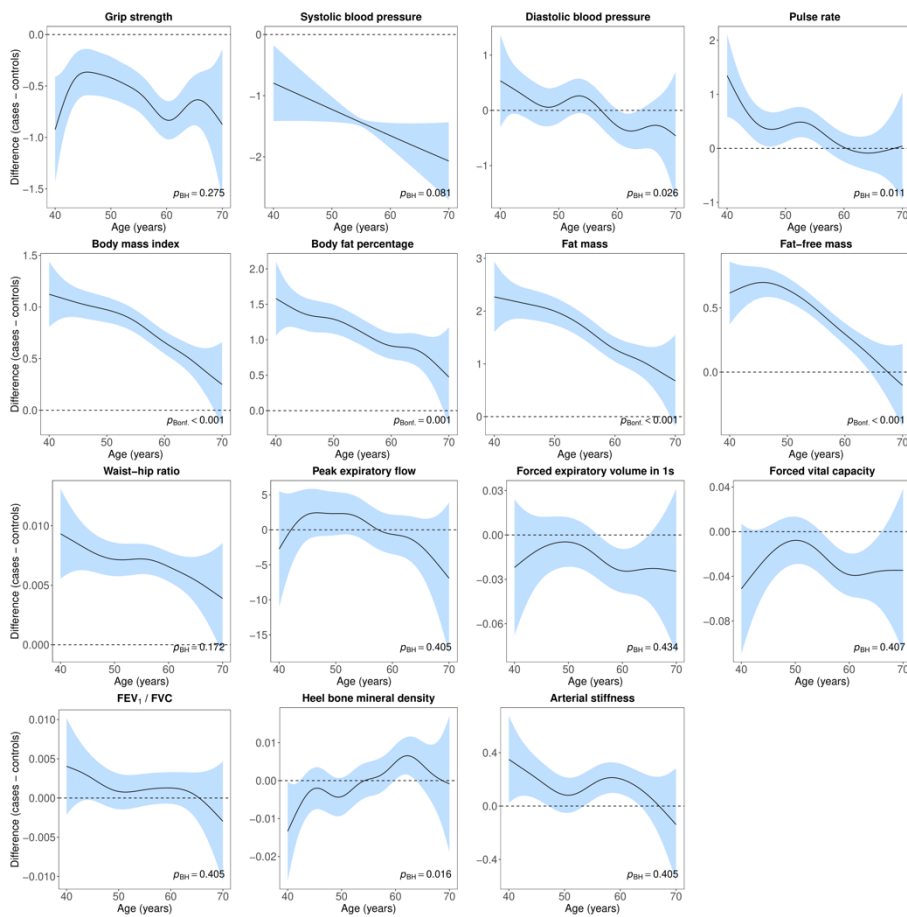
Variable	≥ 2 depression measures					CIDI-SF lifetime depression (MHQ)				
	SMD	95% CI		<i>p</i> _{Bonf.}	<i>p</i> _{BH}	SMD	95% CI		<i>p</i> _{Bonf.}	<i>p</i> _{BH}
Female										
Hand-grip strength	-0.067	-0.081	-0.053	<0.001	<0.001	-0.042	-0.060	-0.025	<0.001	<0.001
Systolic blood pressure	-0.192	-0.206	-0.178	<0.001	<0.001	-0.162	-0.180	-0.145	<0.001	<0.001
Diastolic blood pressure	-0.047	-0.061	-0.033	<0.001	<0.001	-0.005	-0.023	0.013	>0.999	0.600
Pulse rate	0.028	0.014	0.042	0.002	<0.001	0.052	0.034	0.070	<0.001	<0.001
Body mass index	0.190	0.176	0.204	<0.001	<0.001	0.230	0.212	0.248	<0.001	<0.001
Body fat percentage	0.165	0.151	0.179	<0.001	<0.001	0.193	0.175	0.210	<0.001	<0.001
Fat mass	0.211	0.197	0.225	<0.001	<0.001	0.227	0.209	0.245	<0.001	<0.001
Fat-free mass	0.181	0.167	0.195	<0.001	<0.001	0.166	0.148	0.184	<0.001	<0.001
Waist-hip ratio	0.115	0.101	0.129	<0.001	<0.001	0.122	0.104	0.139	<0.001	<0.001
Peak expiratory flow	0.120	0.096	0.144	<0.001	<0.001	0.073	0.043	0.103	<0.001	<0.001
Forced expiratory volume 1s	0.110	0.086	0.134	<0.001	<0.001	0.067	0.037	0.097	<0.001	<0.001
Forced vital capacity	0.102	0.078	0.126	<0.001	<0.001	0.049	0.019	0.079	0.021	0.002
FEV ₁ / FVC	0.043	0.019	0.067	0.006	<0.001	0.051	0.021	0.081	0.011	0.001
Heel bone mineral density	0.024	0.005	0.043	0.177	0.013	0.028	0.005	0.050	0.227	0.017
Arterial stiffness	0.007	-0.014	0.028	>0.999	0.448	0.016	-0.013	0.045	>0.999	0.301
Male										
Hand-grip strength	-0.116	-0.135	-0.097	<0.001	<0.001	-0.002	-0.025	0.020	>0.999	0.900
Systolic blood pressure	-0.159	-0.178	-0.140	<0.001	<0.001	-0.143	-0.166	-0.120	<0.001	<0.001
Diastolic blood pressure	-0.044	-0.063	-0.025	<0.001	<0.001	-0.002	-0.025	0.021	>0.999	0.900
Pulse rate	0.109	0.090	0.128	<0.001	<0.001	0.088	0.066	0.111	<0.001	<0.001
Body mass index	0.140	0.121	0.158	<0.001	<0.001	0.192	0.169	0.215	<0.001	<0.001
Body fat percentage	0.134	0.115	0.153	<0.001	<0.001	0.142	0.119	0.165	<0.001	<0.001
Fat mass	0.165	0.146	0.184	<0.001	<0.001	0.183	0.160	0.206	<0.001	<0.001
Fat-free mass	0.097	0.078	0.116	<0.001	<0.001	0.137	0.114	0.160	<0.001	<0.001
Waist-hip ratio	0.167	0.148	0.185	<0.001	<0.001	0.167	0.144	0.190	<0.001	<0.001
Peak expiratory flow	0.005	-0.025	0.035	>0.999	0.793	0.019	-0.017	0.055	>0.999	0.413
Forced expiratory volume 1s	0.003	-0.027	0.033	>0.999	0.837	0.045	0.009	0.081	0.224	0.022
Forced vital capacity	0.011	-0.019	0.041	>0.999	0.564	0.046	0.011	0.082	0.190	0.021
FEV ₁ / FVC	-0.013	-0.043	0.017	>0.999	0.517	0.006	-0.030	0.042	>0.999	0.900
Heel bone mineral density	-0.101	-0.127	-0.075	<0.001	<0.001	-0.074	-0.102	-0.045	<0.001	<0.001
Arterial stiffness	0.020	-0.007	0.047	>0.999	0.092	0.001	-0.037	0.038	>0.999	0.974

Note: SMD = standardised mean difference; CI = confidence interval; Bonf. = Bonferroni; BH = Benjamini & Hochberg; FEV₁ = forced expiratory volume in one second; FVC = forced vital capacity; CIDI-SF = Composite International Diagnostic Interview Short Form; MHQ = mental health questionnaire. *P*-values for Welch's t-test.

8C. Age-related changes in females

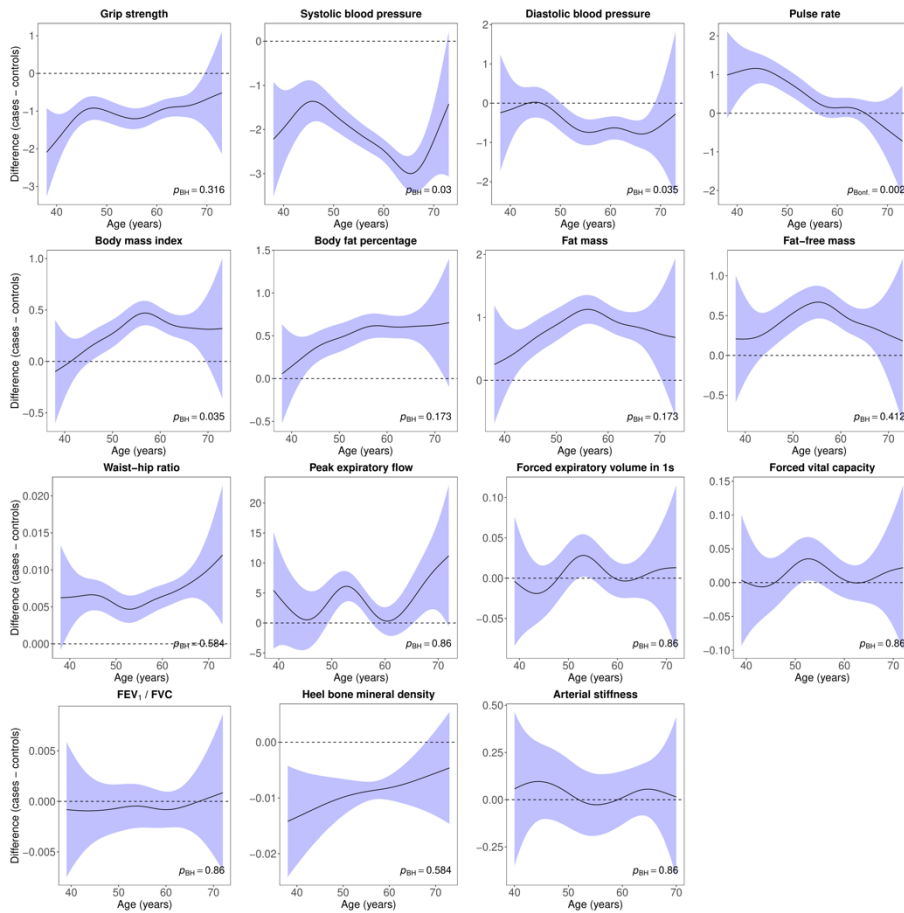


Supplement figure 5. Difference smooths comparing age-related changes in physiological measures of females with lifetime depression (≥ 2 depression measures) to healthy controls. Models were adjusted for ethnicity (except lung function), gross annual household income, physical activity, smoking status, alcohol intake frequency, sleep duration and, for cardiovascular measures, current use of antihypertensive medications. The shaded areas correspond to approximate 95% confidence intervals ($\pm 2 \times$ standard error). Negative values on the y-axes correspond to lower values in females with lifetime depression compared to healthy controls. The horizontal lines represent no difference between female cases and controls. FEV₁ = forced expiratory volume in one second; FVC = forced vital capacity; Bonf. = Bonferroni; BH = Benjamini & Hochberg.

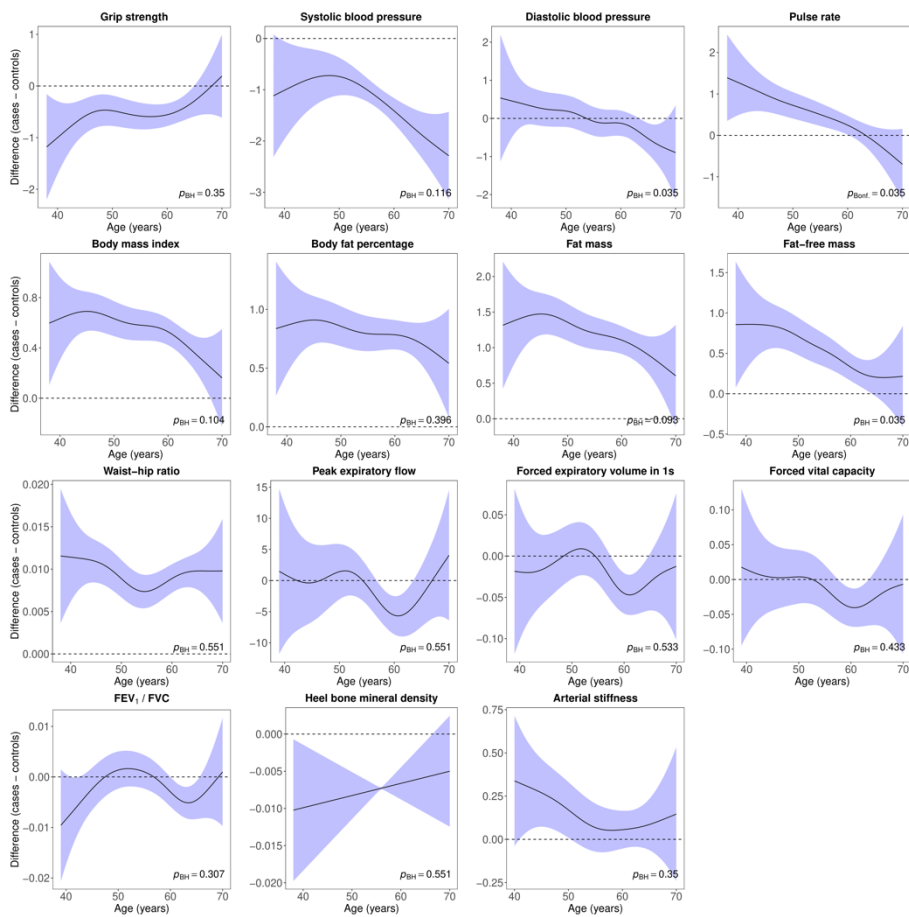


Supplement figure 6. Difference smooths comparing age-related changes in physiological measures of females with lifetime depression (CIDI-SF) to healthy controls. Models were adjusted for ethnicity (except lung function), gross annual household income, physical activity, smoking status, alcohol intake frequency, sleep duration and, for cardiovascular measures, current use of antihypertensive medications. The shaded areas correspond to approximate 95% confidence intervals ($\pm 2 \times$ standard error). Negative values on the y-axes correspond to lower values in females with lifetime depression compared to healthy controls. The horizontal lines represent no difference between female cases and controls. FEV₁ = forced expiratory volume in one second; FVC = forced vital capacity; Bonf. = Bonferroni; BH = Benjamini & Hochberg.

8D. Age-related changes in males



Supplement figure 7. Difference smooths comparing age-related changes in physiological measures of males with lifetime depression (≥ 2 depression measures) to healthy controls. Models were adjusted for ethnicity (except lung function), gross annual household income, physical activity, smoking status, alcohol intake frequency, sleep duration and, for cardiovascular measures, current use of antihypertensive medications. The shaded areas correspond to approximate 95% confidence intervals ($\pm 2 \times$ standard error). Negative values on the y-axes correspond to lower values in males with lifetime depression compared to healthy controls. The horizontal lines represent no difference between male cases and controls. FEV₁ = forced expiratory volume in one second; FVC = forced vital capacity; Bonf. = Bonferroni; BH = Benjamini & Hochberg.



Supplement figure 8. Difference smooths comparing age-related changes in physiological measures of males with lifetime depression (CIDI-SF) to healthy controls. Models were adjusted for ethnicity (except lung function), gross annual household income, physical activity, smoking status, alcohol intake frequency, sleep duration and, for cardiovascular measures, current use of antihypertensive medications. The shaded areas correspond to approximate 95% confidence intervals ($\pm 2 \times$ standard error). Negative values on the y-axes correspond to lower values in males with lifetime depression compared to healthy controls. The horizontal lines represent no difference between male cases and controls. FEV₁ = forced expiratory volume in one second; FVC = forced vital capacity; Bonf. = Bonferroni; BH = Benjamini & Hochberg.