

1 **Forskolin-induced swelling of intestinal organoids predicts long-term cystic fibrosis disease**
2 **progression**

3

4 **Authors:**

5 D. Muilwijk^{1*}, E. de Poel^{1,2*}, P. van Mourik¹, S.W.F. Suen^{1,2}, A.M. Vonk^{1,2}, J.E. Brunsveld^{1,2}, E. Kruisselbrink^{1,2}, H.
6 Oppelaar^{1,2}, M.C. Hagemeijer^{1,2,3}, G. Berkers¹, K.M. de Winter-de Groot¹, S. Heida-Michel¹, S.R. Jans¹, H. van Panhuis¹,
7 M.M. van der Eerden⁴, R. van der Meer⁵, J. Roukema⁶, E. Dompeling⁷, E.J.M. Weersink⁸, G.H. Koppelman^{9a-b}, R. Vries¹⁰,
8 D.D. Zomer-van Ommen¹¹, M.J.C. Eijkemans¹², C.K. van der Ent^{1†} and J.M. Beekman^{1,2†}.

9

10 **Affiliations:**

11 ¹Department of Pediatric Respiratory Medicine, Wilhelmina Children's Hospital, University Medical Center, Utrecht
12 University, 3584 EA Utrecht, The Netherlands;

13 ²Regenerative Medicine Utrecht, University Medical Center, Utrecht University, 3584 CT Utrecht, The Netherlands;

14 ³Current affiliation: Center for Lysosomal and Metabolic Diseases, Department of Clinical Genetics, Erasmus University
15 Medical Center, 3015 GD, Rotterdam, The Netherlands;

16 ⁴Department of Pulmonology, Erasmus MC, University Medical Center, 3015 GD Rotterdam, The Netherlands;

17 ⁵Haga Teaching Hospital, 2545 CH The Hague, The Netherlands;

18 ⁶Radboud University Medical Center, Radboud Institute for Health Sciences, 6525 XZ Nijmegen, The Netherlands;

19 ⁷Maastricht University Medical Center, 6229 HX Maastricht, The Netherlands;

20 ⁸Amsterdam University Medical Center, location AMC, 1105 AZ Amsterdam, The Netherlands;

21 ^{9a}University of Groningen, University Medical Center Groningen, Beatrix Children's Hospital, Department of Pediatric
22 Pulmonology and Pediatric Allergology, Groningen, The Netherlands;

23 ^{9b}University of Groningen, University Medical Center Groningen, Groningen Research Institute for Asthma and COPD
24 (GRIAC), Groningen, The Netherlands;

25 ¹⁰Hubrecht Organoid Technology (HUB), 3584 CM Utrecht, The Netherlands;

26 ¹¹Dutch Cystic Fibrosis Foundation (NCFS), 3744 MG Baarn, The Netherlands;

27 ¹²Department of Data Science and Biostatistics, Julius Center for Health Sciences and Primary Care, University Medical
28 Center, Utrecht University, 3584 EA Utrecht, The Netherlands.

29

30

31 * These authors contributed equally to this work

32 † These authors contributed equally to this work and are both corresponding authors.

33

34

35 **Email:** J.Beekman@umcutrecht.nl (lead contact); K.vanderEnt@umcutrecht.nl

36

37

38 **ABSTRACT**

39 Patient-derived organoids hold great potential as predictive biomarker for disease expression or therapeutic response.
40 Here, we used intestinal organoids to estimate individual cystic fibrosis transmembrane conductance regulator (CFTR)
41 function of people with cystic fibrosis, a monogenic life-shortening disease associated with more than 2000 *CFTR*
42 mutations and highly variable disease progression. In vitro CFTR function in CF intestinal organoids of 176 individuals
43 with diverse *CFTR* mutations was quantified by forskolin induced swelling and was strongly associated with longitudinal
44 changes of lung function and development of pancreatic insufficiency, CF-related liver disease and diabetes. This
45 association was not observed when the commonly used biomarker of CFTR function sweat chloride concentration was
46 used. The data strongly exemplifies the value of an organoid-based biomarker in a clinical disease setting and supports
47 the prognostic value of forskolin induced swelling of intestinal organoids, especially for people with CF who have rare
48 *CFTR* genotypes with unclear clinical consequences.

49

50 **MAIN**

51 Clinical disease expression in people with CF (pwCF) is variable and results from a combination of genetic,
52 environmental and stochastic factors that are unique for each individual. CF is a recessive, monogenic disease caused
53 by mutations in the cystic fibrosis transmembrane conductance regulator (*CFTR*) gene ¹. Over 2000 *CFTR* variants which
54 differentially affect CFTR function and clinical phenotype have been identified until now ². The more common
55 mutations have been categorized into distinct classes according to the mechanism by which CFTR function is disrupted
56 ³. To better understand how CFTR function contributes to disease expression, biomarkers such as sweat chloride
57 concentration (SCC), intestinal current measurements (ICM) and nasal potential difference (NPD) are used to estimate
58 individual CFTR function. These biomarkers have mostly been validated in the context of CF diagnosis, but their ability
59 to accurately discriminate between pwCF with differential disease progression is limited despite clear relations at
60 population level ⁴⁻¹⁰. Forskolin induced swelling (FIS) of patient-derived intestinal organoids is an in vitro biomarker that
61 quantifies CFTR-dependent fluid transport into the organoid lumen ^{11,12} and may provide a more precise and accurate
62 estimation of CFTR function compared to other biomarkers. Small proof of concept studies showed that FIS correlates
63 with SCC and ICM and that clinical disease phenotypes could be stratified based on FIS level ^{13,14}. We hypothesized that
64 individual CFTR function measured by FIS could enable the prediction of long-term disease progression defined by rate
65 of FEV1pp decline and development of co-morbidities such as pancreatic insufficiency (PI), CF-related liver disease
66 (CFRLD) and CF-related diabetes (CFRD). Predicting long-term disease progression provides important prognostic
67 insight, which is especially relevant to people with rare, uncharacterized *CFTR* genotypes or *CFTR* genotypes with
68 varying clinical consequences.

69 In this retrospective cohort study, we collected data from 176 participants with CF of whom intestinal organoid
70 measurements were available and who provided informed consent to retrieve clinical data from the Dutch CF Registry
71 via the Dutch CF Foundation. Three participants were excluded from the analysis because clinical data was not
72 available, no data was excluded based on organoid measurements. Participant characteristics and individual genotypes
73 with corresponding mutation classification and combination of mutation types (mutation group) are listed in

74 supplementary table 1 and 2, respectively.

75 Individual FIS responses of all participants after 1 hour stimulation with different forskolin concentrations are shown in
76 figure 1a. Between-subject variability was most apparent at 0.8 μ M and 5.0 μ M forskolin, but no evident clustering was
77 observed. Consistent with prior studies investigating relations between FIS and CF disease or biomarkers^{12,13,15}, our
78 analyses were performed with FIS levels upon 0.8 μ M forskolin stimulation. FIS at 0.8 μ M forskolin highly varied among
79 participants (median AUC 142.5, IQR 30.3-1214.9; figure 1a and supplementary figure 1a) as well as within genotype
80 classes (figure 1b-c) and between genotype groups, as defined by the combination of the two mutation types
81 (supplementary figure 1b).

82 In total, 1072 observations of 152 participants with available FEV1pp measurements (figure 2a) were included in the
83 analysis to assess the association of FIS with long-term FEV1pp decline. Linear mixed model analysis showed that
84 average FEV1pp decline per year of age varied with FIS level, adjusted for sex, genotype class, CFTR modulator usage
85 and SCC (table 1). To illustrate this linear association of FEV1pp decline by age with FIS, figure 2b shows that average
86 annual FEV1pp decline was 1.19 (1.46-0.92, $p < 0.001$) per year of age for participants with a FIS level of 0. Per 1000-
87 points increase in AUC, FEV1pp decline was 0.40 (0.20-0.60, $p < 0.001$) per year of age lower, leading to an FEV1pp
88 decline of 0 for participants with an AUC of 3000.

89 The validity of these results was verified by assessing the potential impact of selection bias and confounding with
90 separate subgroup and sensitivity analyses. A subgroup analysis that assumed a linear relation between age and
91 FEV1pp decline of pwCF between 5-25 years of age identified a similar regression coefficient of 0.49 (0.02-0.96,
92 $p = 0.039$) compared to the complete population, suggesting a negligible impact of selection bias due to inclusion of
93 pwCF with a milder phenotype who survive to an older age. Since at least one *CFTR* mutation was unclassified in 26% of
94 participants (figure 1c, supplementary table 1 and 2), a sensitivity analysis was performed in which we refitted both
95 models with genotype group instead of genotype class, to assess whether the association of FIS with FEV1pp decline
96 was influenced by categorization of genotype. The association of FIS with FEV1pp decline in these models was still
97 statistically significant and coefficients were comparable to the models categorizing genotype by mutation class
98 (supplementary table 4).

99 In addition, we compared the predictive capacity of FIS with SCC on FEV1pp decline in similar linear mixed models. SCC
100 alone was not significantly associated with FEV1pp decline ($p = 0.064$), although a trend was suggested (supplementary
101 table 5). SCC did not improve the prediction of FEV1pp decline in combination with FIS ($p = 0.946$; supplementary table
102 6), indicating that FIS predicts long-term FEV1pp decline more accurately than SCC.

103 To investigate the association of FIS with the occurrence of other CF-related co-morbidities, we performed
104 multivariable logistic regression with PI, CFRLD and CFRD, adjusted for age, sex and SCC. We found a significant
105 association of FIS with the occurrence of PI (adjusted OR: 0.23, 95% CI 0.11-0.49, $p < 0.001$), CFRLD (adjusted OR: 0.28,
106 95% CI 0.12-0.68, $p = 0.005$) and CFRD (adjusted OR: 0.36, 95% CI 0.13-0.98, $p = 0.045$; table 2 and figure 2c-e). This
107 indicates that the probability of developing CF-related co-morbidities is lower for participants with higher FIS levels. As
108 illustrated in table 2 and figure 2f, age was also significantly associated with the occurrence of CFRD.

109 In combination with FIS, SCC was clearly not associated with any of the CF-related co-morbidities, given the non-
110 significant odds ratios around 1 (table 2). This suggests that FIS is a stronger predictor of CF-related co-morbidities
111 compared to SCC.

112 This study showed that residual CFTR function quantified by FIS of patient-derived cystic fibrosis organoids predicts
113 long-term annual FEV1pp decline and occurrence of CF-related co-morbidities PI, CFRLD and CFRD, using 9-year
114 longitudinal data of Dutch pwCF with many distinct *CFTR* mutations and ages ranging from 0 to 61 years old.
115 Despite the influence of genetic modifiers and other non-CFTR dependent environmental factors on CF disease severity
116 ^{1,16-18}, it was remarkable to observe that in vitro FIS on intestinal cells has such a broad predictive capacity for many
117 non-intestinal organ systems. Furthermore, direct comparison of FIS with SCC revealed that FIS also predicts multi-
118 organ disease expression better than SCC, which has been the most important and well-validated biomarker of CF
119 disease until now and is a commonly used endpoint to measure efficacy of CFTR modulating drugs ^{6,7}. This difference
120 between FIS and SCC could be explained by a more precise and accurate estimation of CFTR function by FIS, since FIS is
121 completely CFTR dependent with minimal impact of technical variability ^{11,12}, whereas a substantial part of variability in
122 SCC is caused by technical and other non-CFTR dependent biological factors ⁶. In addition, FIS not only demonstrated a
123 large variability in CFTR function between pwCF with different genotypes but also within genotype classes, illustrating
124 that FIS has the potential to refine the CFTR protein function-based classification system which currently only
125 distinguishes between mild and severe CF phenotypes ^{2,19,20}.
126 Rates of annual FEV1pp decline in this study were within the same range as reported by other recent European studies,
127 which also showed that annual FEV1pp decline was lower for pwCF with a milder disease severity as classified by
128 genotype ²¹ or pancreatic status ²² and was highest in the age group between 18 and 28 years ²². Moreover, our results
129 are consistent with a previous study showing a more severe CF disease phenotype in terms of pulmonary and
130 gastrointestinal outcome parameters in infants with low FIS compared to infants with high FIS ¹³. In line with our
131 observations, Davis et al. also demonstrated that SCC by itself does not predict lung disease in pwCF ²³.
132 An important limitation of this research is the retrospective observational study design. We adjusted for several
133 confounders, but were unable to account for other prognostic factors such as pulmonary exacerbations and sputum
134 cultures. As 34% of SCC values was missing, we used multiple imputation methods to prevent bias due to selective
135 missing data. Potential impact of survival bias was minimized by our subgroup and sensitivity analyses, but could not
136 completely be excluded. Further research is also needed to study the association of changes in organoid FIS with long-
137 term clinical effects upon CFTR modulator therapy.
138 In summary, this study showed that FIS of cystic fibrosis organoids is strongly associated with long-term FEV1pp decline
139 and occurrence of different CF-related co-morbidities, suggesting that estimation of CFTR function by FIS could have
140 important prognostic value for individual disease expression in multiple organs that affect CF morbidity.

141 **Acknowledgements**

142 This work was supported by grants of the Dutch Cystic Fibrosis Foundation (NCFs) as part of the HIT-CF Program and by
143 ZonMW. Furthermore, we would like to thank the people with CF who gave informed consent for generating and
144 testing their individual organoids and the use of their data; all members of the research teams of the Dutch CF clinics
145 that contributed to this work; and all colleagues of the HUB Organoid Technology for their help with generating
146 intestinal organoids and performing FIS experiments.

147

148 **Author Contribution Statement**

149

150 D.M. and E.d.P. contributed substantially to the design of the study, the acquisition, analysis and interpretation of data
151 and have drafted the manuscript.

152 S.W.F.S., A.M.V., J.E.B., E.K., H.O., M.C.H., P.v.M. G.B., K.M.d.W-d.G., S.H.-M., S.R.J., H.v.P., M.M.v.d.E., R.v.d.M., J.R.,

153 E.D., E.J.M.W., G.H.K., R.V. and D.D.Z.-v.O. contributed to the acquisition of study data and revised the manuscript.

154 M.J.C.E. contributed to the design of the study, analysis and interpretation of data and revised the manuscript.

155 C.K.v.d.E and J.M.B. have made substantial contributions to the conception and design of the study, interpretation of
156 data and revised the manuscript.

157

158 **Conflict of interest**

159 J.M.B. and C.K.v.d.E. are inventors on patent(s) related to the FIS-assay and received financial royalties from 2017

160 onward. J.M.B report receiving research grant(s) and consultancy fees from various industries, including Vertex

161 Pharmaceuticals, Proteostasis Therapeutics, Eloxx Pharmaceuticals, Teva Pharmaceutical Industries and Galapagos

162 outside the submitted work. C.K.v.d.E report receiving research grant(s) grant(s) from Vertex Pharmaceuticals (money

163 to institution) outside the submitted work. G.H.K. reports grants from Lung Foundation of the Netherlands, Vertex

164 Pharmaceuticals, UBBO EMMIUS foundation, GSK, TEVA the Netherlands, TETRI Foundation, European Union (H2020)

165 (all money to institution), outside the submitted work.

166

167 **Data availability statement**

168 The datasets generated and analyzed in the current study are available from the corresponding author on reasonable
169 request.

170

171 **Code availability statement**

172 No custom code or mathematical algorithm was used for this study.

173

174 **Material availability statement**

175 Intestinal organoids are accessible for study by contacting the Hubrecht Organoid Technology foundation

176 (<http://hub4organoids.eu/>). Further information and requests for resources and reagents should be directed to and will

177 be fulfilled by the lead contact, Dr. Jeffrey M. Beekman (j.beekman@umcutrecht.nl).

178

179

180 **Clinical data**

181 Clinical data was retrieved from the Dutch Cystic Fibrosis Foundation (NCFS) of participants who provided written
182 informed consent.

183 **REFERENCES**

- 184 1. Cutting, G. R. Cystic fibrosis genetics: From molecular understanding to clinical application. *Nat. Rev. Genet.* **16**,
185 45–56 (2015).
- 186 2. US CF Foundation, Johns Hopkins University, T. H. for S. C. The Clinical and Functional TRanslation of CFTR
187 (CFTR2). <http://cftr2.org> (2011).
- 188 3. Elborn, J. S. Cystic fibrosis. *Lancet (London, England)* **388**, 2519–2531 (2016).
- 189 4. Beekman, J. M. *et al.* CFTR functional measurements in human models for diagnosis, prognosis and
190 personalized therapy: Report on the pre-conference meeting to the 11th ECFS Basic Science Conference, Malta,
191 26-29 March 2014. *J. Cyst. Fibros. Off. J. Eur. Cyst. Fibros. Soc.* **13**, 363–372 (2014).
- 192 5. Bronsveld, I. *et al.* Residual chloride secretion in intestinal tissue of deltaF508 homozygous twins and siblings
193 with cystic fibrosis. The European CF Twin and Sibling Study Consortium. *Gastroenterology* **119**, 32–40 (2000).
- 194 6. Collaco, J. M. *et al.* Sources of Variation in Sweat Chloride Measurements in Cystic Fibrosis. *Am. J. Respir. Crit.*
195 *Care Med.* **194**, 1375–1382 (2016).
- 196 7. De Boeck, K. *et al.* CFTR biomarkers: time for promotion to surrogate end-point. *Eur. Respir. J.* **41**, 203–216
197 (2013).
- 198 8. Kyrilli, S. *et al.* Insights into the variability of nasal potential difference, a biomarker of CFTR activity. *J. Cyst.*
199 *Fibros. Off. J. Eur. Cyst. Fibros. Soc.* **19**, 620–626 (2020).
- 200 9. Mall, M. *et al.* The DeltaF508 mutation results in loss of CFTR function and mature protein in native human
201 colon. *Gastroenterology* **126**, 32–41 (2004).
- 202 10. Minso, R. *et al.* Intestinal current measurement and nasal potential difference to make a diagnosis of cases
203 with inconclusive CFTR genetics and sweat test. *BMJ open Respir. Res.* **7**, (2020).
- 204 11. Dekkers, J. F. *et al.* A functional CFTR assay using primary cystic fibrosis intestinal organoids. *Nat. Med.* **19**, 939–
205 945 (2013).
- 206 12. Dekkers, J. F. *et al.* Characterizing responses to CFTR-modulating drugs using rectal organoids derived from
207 subjects with cystic fibrosis. *Sci. Transl. Med.* **8**, 344ra84 (2016).
- 208 13. de Winter-de Groot, K. M. *et al.* Stratifying infants with cystic fibrosis for disease severity using intestinal
209 organoid swelling as a biomarker of CFTR function. *Eur. Respir. J.* **52**, (2018).
- 210 14. de Winter-de Groot, K. M. *et al.* Forskolin-induced swelling of intestinal organoids correlates with disease
211 severity in adults with cystic fibrosis and homozygous F508del mutations. *J. Cyst. Fibros. Off. J. Eur. Cyst.*
212 *Fibros. Soc.* **19**, 614–619 (2020).
- 213 15. Ramalho, A. S. *et al.* Correction of CFTR function in intestinal organoids to guide treatment of cystic fibrosis.

- 214 *Eur. Respir. J.* **57**, (2021).
- 215 16. Collaco, J. M., Blackman, S. M., McGready, J., Naughton, K. M. & Cutting, G. R. Quantification of the relative
216 contribution of environmental and genetic factors to variation in cystic fibrosis lung function. *J. Pediatr.* **157**,
217 802–803 (2010).
- 218 17. Santis, G., Osborne, L., Knight, R. A. & Hodson, M. E. Independent genetic determinants of pancreatic and
219 pulmonary status in cystic fibrosis. *Lancet (London, England)* **336**, 1081–1084 (1990).
- 220 18. Weiler, C. A. & Drumm, M. L. Genetic influences on cystic fibrosis lung disease severity. *Front. Pharmacol.* **4**, 40
221 (2013).
- 222 19. McKone, E. F., Emerson, S. S., Edwards, K. L. & Aitken, M. L. Effect of genotype on phenotype and mortality in
223 cystic fibrosis: a retrospective cohort study. *Lancet (London, England)* **361**, 1671–1676 (2003).
- 224 20. McKone, E. F., Goss, C. H. & Aitken, M. L. CFTR genotype as a predictor of prognosis in cystic fibrosis. *Chest* **130**,
225 1441–1447 (2006).
- 226 21. De Boeck, K. & Zolin, A. Year to year change in FEV(1) in patients with cystic fibrosis and different mutation
227 classes. *J. Cyst. Fibros. Off. J. Eur. Cyst. Fibros. Soc.* **16**, 239–245 (2017).
- 228 22. Caley, L., Smith, L., White, H. & Peckham, D. G. Average rate of lung function decline in adults with cystic fibrosis
229 in the United Kingdom: Data from the UK CF registry. *J. Cyst. Fibros. Off. J. Eur. Cyst. Fibros. Soc.* (2020)
230 doi:10.1016/j.jcf.2020.04.008.
- 231 23. Davis, P. B., Schluchter, M. D. & Konstan, M. W. Relation of sweat chloride concentration to severity of lung
232 disease in cystic fibrosis. *Pediatr. Pulmonol.* **38**, 204–209 (2004).
- 233 24. De Boeck, K., Zolin, A., Cuppens, H., Olesen, H. V & Viviani, L. The relative frequency of CFTR mutation classes in
234 European patients with cystic fibrosis. *J. Cyst. Fibros. Off. J. Eur. Cyst. Fibros. Soc.* **13**, 403–409 (2014).
- 235 25. Green, D. M. *et al.* Mutations that permit residual CFTR function delay acquisition of multiple respiratory
236 pathogens in CF patients. *Respir. Res.* **11**, 140 (2010).
- 237 26. Yu, H. *et al.* Ivacaftor potentiation of multiple CFTR channels with gating mutations. *J. Cyst. Fibros. Off. J. Eur.*
238 *Cyst. Fibros. Soc.* **11**, 237–245 (2012).
- 239 27. Vankeerberghen, A. *et al.* Characterization of mutations located in exon 18 of the CFTR gene. *FEBS Lett.* **437**, 1–
240 4 (1998).
- 241 28. Ren, H. Y. *et al.* VX-809 corrects folding defects in cystic fibrosis transmembrane conductance regulator protein
242 through action on membrane-spanning domain 1. *Mol. Biol. Cell* **24**, 3016–3024 (2013).
- 243 29. Rapino, D. *et al.* Rescue of NBD2 mutants N1303K and S1235R of CFTR by small-molecule correctors and
244 transcomplementation. *PLoS One* **10**, e0119796 (2015).

- 245 30. Pagani, F. *et al.* New type of disease causing mutations: the example of the composite exonic regulatory
246 elements of splicing in CFTR exon 12. *Hum. Mol. Genet.* **12**, 1111–1120 (2003).
- 247 31. Van Goor, F., Yu, H., Burton, B. & Hoffman, B. J. Effect of ivacaftor on CFTR forms with missense mutations
248 associated with defects in protein processing or function. *J. Cyst. Fibros. Off. J. Eur. Cyst. Fibros. Soc.* **13**, 29–36
249 (2014).
- 250 32. De Boeck, K. Cystic fibrosis in the year 2020: A disease with a new face. *Acta Paediatr.* **109**, 893–899 (2020).
- 251 33. Prontera, P. *et al.* A Clinical and Molecular Survey of 62 Cystic Fibrosis Patients from Umbria (Central Italy)
252 Disclosing a High Frequency (2.4%) of the 2184insA Allele: Implications for Screening. *Public Health Genomics*
253 **19**, 336–341 (2016).
- 254 34. Vonk, A. M. *et al.* Protocol for Application, Standardization and Validation of the Forskolin-Induced Swelling
255 Assay in Cystic Fibrosis Human Colon Organoids. *STAR Protoc.* **1**, 100019 (2020).
- 256

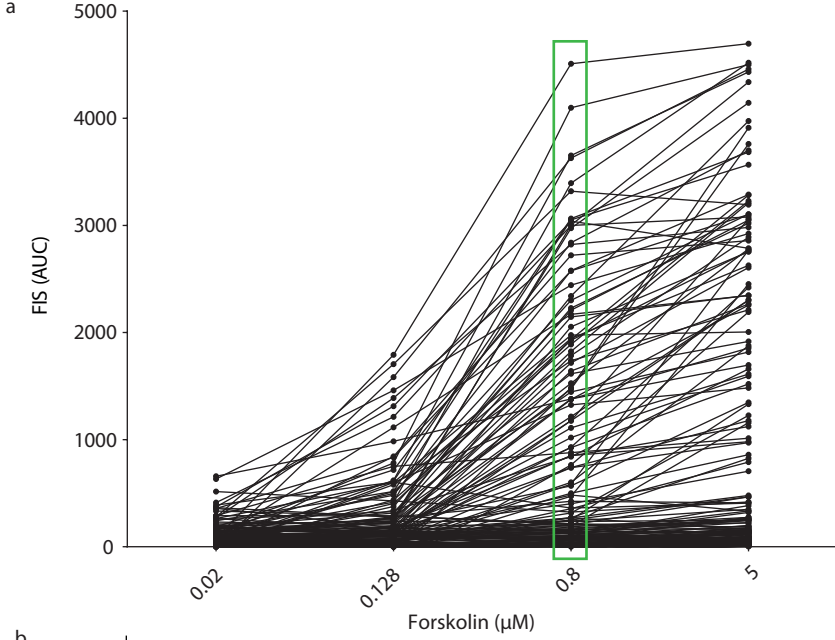
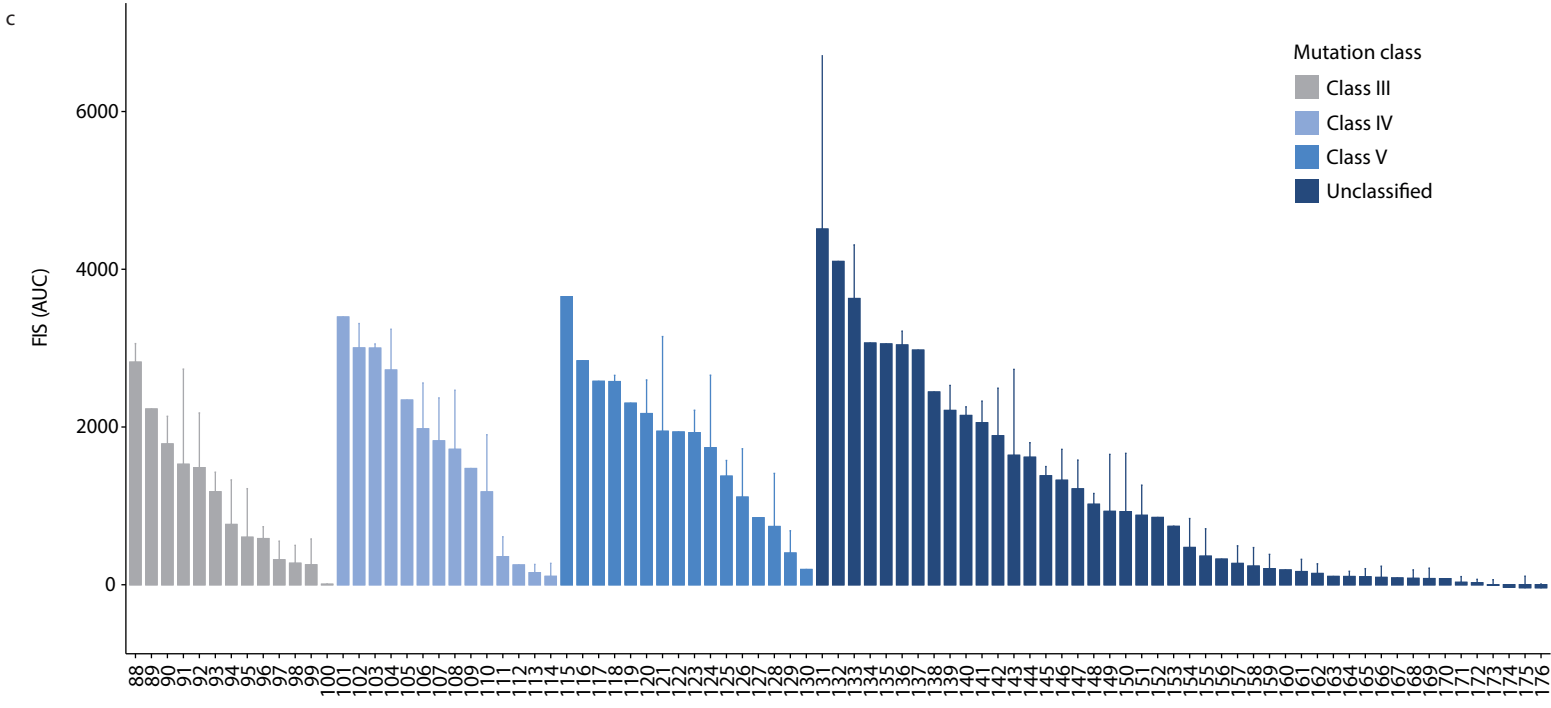
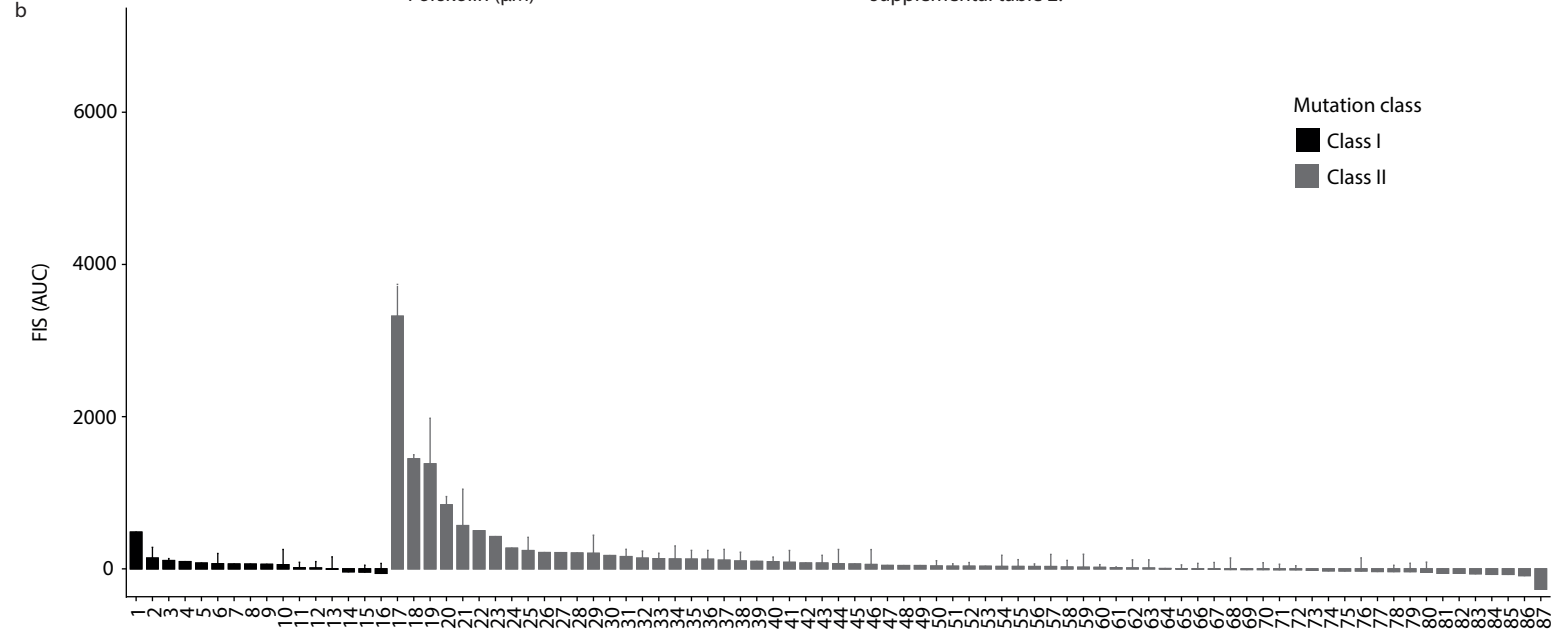


Figure 1: Forskolin induced swelling (FIS) levels of organoids derived from the 176 study participants.

a) FIS levels, defined by relative size increase of intestinal organoids after 1h stimulation with four ascending forskolin (fsk) concentrations, quantified as area under the curve (AUC). Each line represent swelling of organoids of individual study participants. Each data point (black dot) represents mean AUC of both technical (n=2) and biological replicates (ranging from n=1-n=7). (b) Waterfall plots of FIS responses at 0.8 μM fsk (highlighted in 1a by the green box) of all study participants grouped based on mutation class I or II or (c) mutation class III-V or unclassified. Genotypes are classified in one mutation class based on the mildest mutation class of the two alleles. Bars represent mean+SD of all replicates. The numbers on the x-axes represent the participant number, the corresponding genotypes are specified in supplemental table 2.



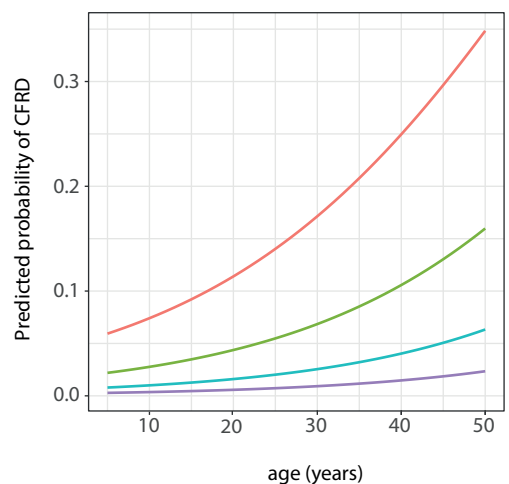
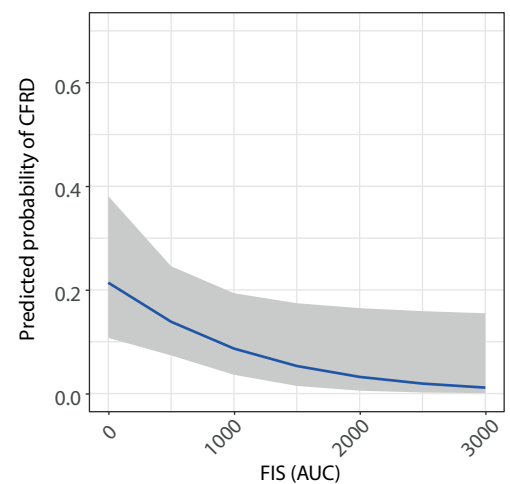
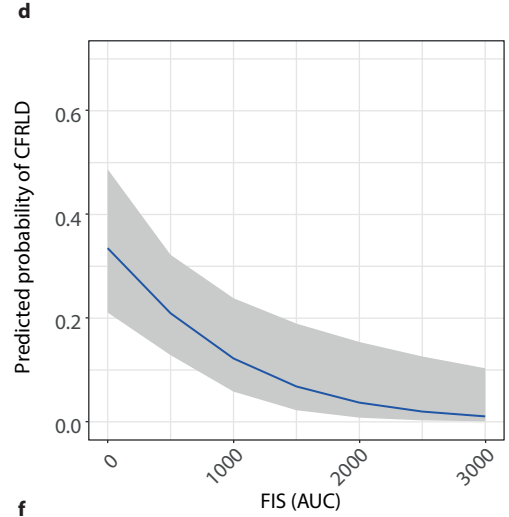
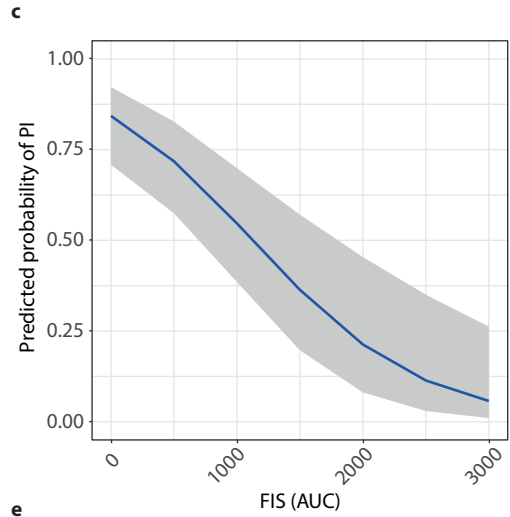
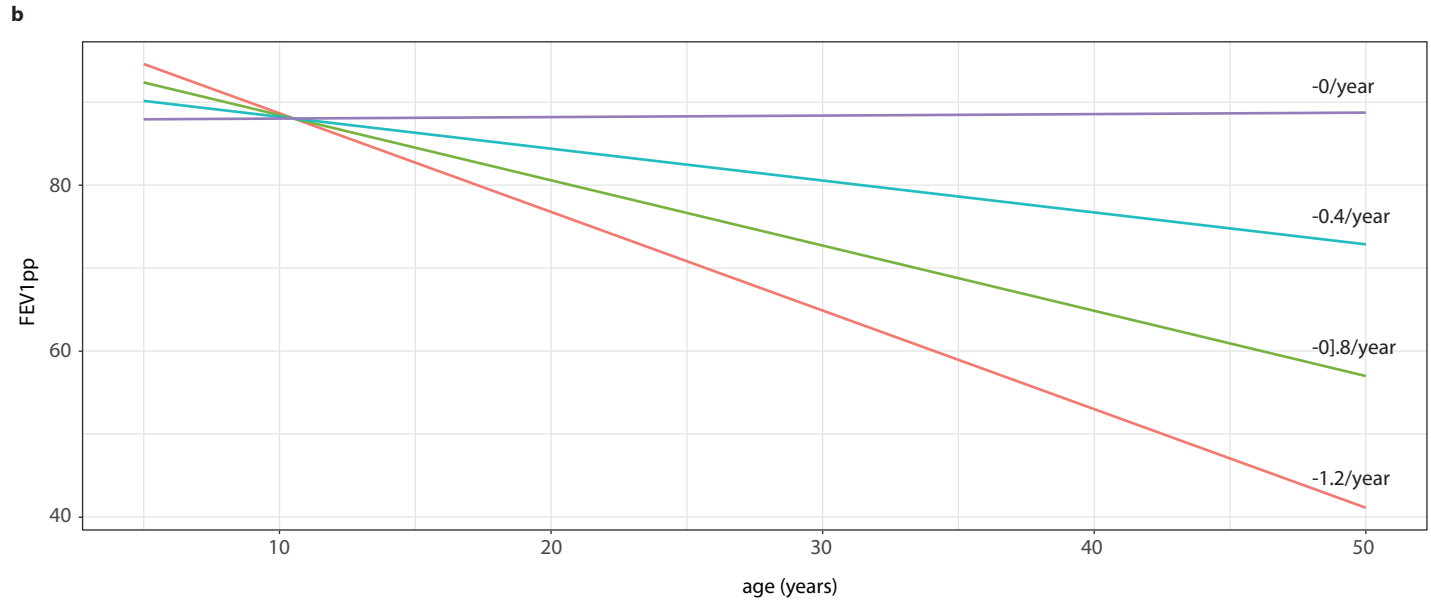
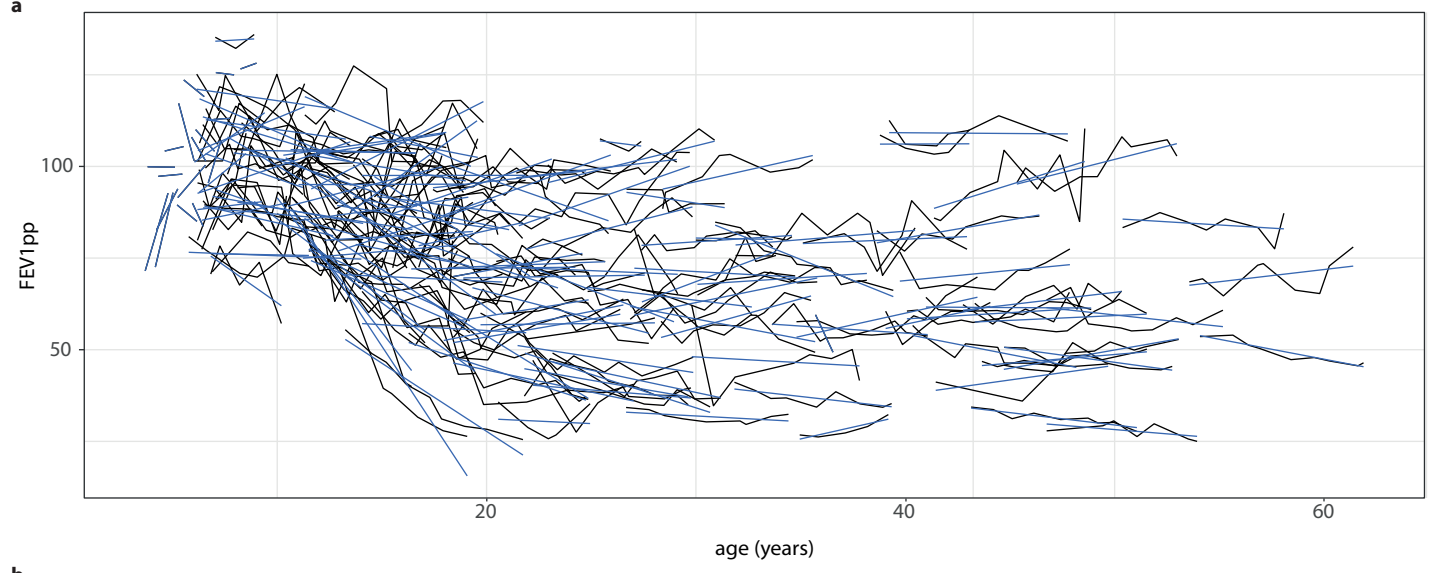


Figure 2: Association of FIS with clinical outcomes.
 a) individual FEV1pp trajectories of study participants over time in years. b) Association between increasing levels of residual CFTR function (defined by steps of 1000 AUC) and long-term FEV1pp decline for age ranging from 0-50 with the average predicted annual FEV1pp decline specified on the right. (c-e) Association between residual CFTR function (defined by steps of 1000 AUC) and probability of developing pancreas insufficiency (PI) (c), CF-related liver disease (CFRLD) (d) and CF-related diabetes (CFRD) (e). In addition to FIS, age is also associated with probability of developing CFRD (f).

257 TABLES

258 Table 1. Association of FIS with FEV1pp decline

259 Regression coefficients of linear mixed effects model for FEV1pp.

N=152, obs=1072	Coefficient (95% CI)	P-value
Age	-1.19 (-1.46 - -0.92)	<0.001*
FIS	-4.23 (-9.41 – 0.94)	0.109
FIS*age	0.40 (0.20 – 0.60)	<0.001*
Treatment		
- none	Reference category	
- ivacaftor	7.92 (4.54 – 11.30)	<0.001*
- lumacaftor/ivacaftor	-3.87 (-8.29 – 0.55)	0.086
Sex		
- male	Reference category	
- female	-0.77 (-6.70 – 5.15)	0.798
Genotype class		
- unclassified	Reference category	
- class I	-7.43 (-19.26 – 4.40)	0.218
- class II	-4.71 (-12.69 – 3.27)	0.247
- class III	-0.46 (-12.26 – 11.35)	0.939
- class IV	0.67 (-12.29 – 13.64)	0.919
- class V	-20.43 (-33.60 – -7.26)	0.002*
SCC	-0.08 (-0.23 – 0.07)	0.286

260

261 *FEV1pp: Forced expiratory volume in 1 second, percent predicted. Age in years. FIS: Forskolin induced swelling, defined*
 262 *as the relative size increase of intestinal organoids (AUC) after 1h stimulation with 0.8 μM forskolin, AUC scaled 1:1000.*

263 *FIS*age indicates the difference in annual FEV1pp decline per 1000 AUC change in FIS level. Genotype class: CFTR-*

264 *protein function class of the mildest of both CFTR-mutations. SCC: Sweat chloride concentration in mmol/L.*

265 ** significance level P < 0.05.*

266

267

268 **Table 2. Association of FIS with CF-related co-morbidities**

269 Adjusted odds ratios of multivariable logistic regression for pancreatic insufficiency, CF-related diabetes and CF-related
 270 liver disease.

N=173	Pancreatic insufficiency		CF-related liver disease		CF-related diabetes	
	Odds ratio (95% CI)	P-value	Odds ratio (95% CI)	P-value	Odds ratio (95% CI)	P-value
FIS	0.23 (0.11 – 0.49)	<0.001*	0.28 (0.12 – 0.68)	0.005*	0.36 (0.13 – 0.98)	0.045*
Age	1.00 (0.96 – 1.03)	0.813	1.02 (0.99 – 1.04)	0.235	1.05 (1.02 – 1.08)	0.003*
Sex						
- male	Reference category					
- female	0.50 (0.18 – 1.36)	0.184	0.72 (0.35 – 1.51)	0.388	2.06 (0.80 – 5.31)	0.133
SCC	1.00 (0.97 – 1.02)	0.754	1.01 (0.98 – 1.03)	0.636	1.01 (0.98 – 1.04)	0.540

271

272 *FIS: Forskolin induced swelling, defined as the relative size increase of intestinal organoids (AUC) after 1h stimulation*
 273 *with 0.8 μM forskolin, AUC scaled 1:1000. Age in years. SCC: sweat chloride concentration in mmol/L.*

274 ** significance level P < 0.05.*

275

276 MATERIALS & METHODS

277 Study design and population

278 A retrospective observational cohort study was conducted in Dutch people with CF (pwCF) of which 1)
279 intestinal organoids were generated as part of previous studies or clinical care before January 2020 and 2)
280 written informed consent was obtained to use their intestinal organoids and clinical data for the present study.

281 Study parameters

282 The primary outcome variable was defined as long-term lung function decline, expressed as FEV1 percent
283 predicted (FEV1pp) calculated according to global lung function initiative (GLI) guidelines. Secondary outcome
284 variables were occurrence of pancreatic insufficiency (PI), defined by fecal elastase < 200 µg/g, clinical
285 diagnosis of CF-related liver disease (CFRLD) and occurrence of insulin-dependent CF-related diabetes (CFRD)
286 defined by daily insulin treatment.

287 The primary explanatory variable of interest was forskolin induced swelling (FIS), defined by the relative size
288 increase of intestinal organoids after 1h stimulation with 0.8 µM forskolin (fsk), quantified as area under the
289 curve (AUC). Previous studies showed that discrimination between individual FIS responses was most optimal
290 and correlated best with other in vitro and in vivo CFTR biomarkers when FIS was performed with 0.8 µM fsk
291 ^{12,13}. Other included explanatory variables were: age in years at time of each lung function measurement;
292 treatment status at time of each lung function measurement, categorized as no CFTR-modulator treatment,
293 treatment with ivacaftor or with lumacaftor/ivacaftor; sex; sweat chloride concentration (SCC) in mmol/L; and
294 genotype, categorized as class I-V or unclassified, defined by genotype class of the mildest of both mutations
295 according to available literature (supplementary table 2). Additionally, genotypes were categorized in groups
296 according to the combination of the following mutation types: insertion/deletion, nonsense, missense, splice,
297 unknown.

298 Study procedures

299 Organoid measurements:

300 The generation of intestinal organoids from biopsies and subsequent fluid secretion assays (FIS-assays) were
301 performed according to a previously described protocol ³⁴. All FIS-assay experiments were conducted in
302 duplicate and for the majority of the donors at multiple culturing time points with a maximum of 7 consecutive
303 culture time points (n=7).

304 Clinical data collection:

305 Data on clinical study parameters were retrieved from the Dutch Cystic Fibrosis Foundation (NCFS) Registry.
306 Annual best FEV1pp values between 2010 and 2018 were used to estimate lung function decline. Treatment
307 status at time of lung function measurements was calculated based on start and stop dates of CFTR-modulators
308 registered in the database. Of all other variables, single values known in 2018 were obtained because repeated
309 measurements were unavailable or inconsistently collected.

310 **Statistical analysis**

311 Multilevel multiple imputation was performed to handle missing data of SCC, PI and CFRD under the
312 assumption of missingness at random (MAR). All statistical analyses were performed on multiple imputed
313 datasets (m=5, iterations=20) with pooling of the results.

314 The association between age and long-term lung function decline was analyzed using a linear mixed effects
315 model. FEV1pp was specified as outcome variable in the model, with FIS, SCC, genotype class, sex, age,
316 treatment and FIS*age as fixed effects, where the interaction term FIS*age reflected the difference in annual
317 FEV1pp decline according to FIS level. The model included a random intercept and random slope for age per
318 subject, assuming a first order auto-regressive (cAR1) correlation structure.

319 To account for selection bias towards a milder phenotype in pwCF surviving to an older age, a subgroup
320 analysis was conducted only including measurements between 5-25 years, in which the relationship between
321 age and FEV1pp decline can reasonably be assumed to be linear.

322 Sensitivity analyses were performed using genotype group instead of genotype class, to assess whether the
323 association of FIS with FEV1pp decline was influenced by categorization of genotype. To obtain reliable effect
324 estimates and standard errors for genotype group, groups with less than 5 participants were excluded from this
325 part of the analysis.

326 To compare the predictive value of FIS with SCC on long-term FEV1pp decline, four models were built which all
327 included FIS, SCC, genotype class, sex, age and treatment as fixed effects. A baseline model was built without
328 an interaction term, and the other three models were built with the addition of either the interaction term
329 FIS*age, SCC*age or both FIS*age and SCC*age in the model. Performance of these models was compared
330 using the Likelihood Ratio test.

331 Secondary outcomes were analyzed using multivariable logistic regression, with FIS, SCC, sex, and age in 2018
332 as explanatory variables. Given the low proportion of outcome events within some of the genotype classes as
333 well as within genotype groups, genotype was not included in the analysis. In addition, CFTR modulator usage
334 was not included because date of onset of the secondary outcomes was not available, indicating that a causal
335 effect could not be addressed.

336 Significance levels were set at 0.05. Statistical analyses were performed with R version 4.0.2 using packages
337 nlme, lme4, mice and micemd.

338