

Czeisler *et al.* 2021  
Uncovering Survivorship Bias in Longitudinal Mental Health Surveys

## Title

Uncovering Survivorship Bias in Longitudinal Mental Health Surveys

## Authors

Mark É. Czeisler\*, A.B., Joshua F. Wiley, Ph.D., Charles A. Czeisler, Ph.D., M.D., Shantha M.W. Rajaratnam\*\*, Ph.D. & Mark E. Howard\*\*, M.B.B.S., Ph.D.

\* Corresponding author.

\*\* These authors contributed equally to this report.

## Author Open Researcher and Contributor Identifiers (ORCID IDs):

Mark É. Czeisler (0000-0003-3100-7347)

Joshua F. Wiley (0000-0002-0271-6702)

Charles A. Czeisler (0000-0002-7408-1849)

Shantha M.W. Rajaratnam (0000-0001-7527-8558)

Mark E. Howard (0000-0001-7772-1496)

## Abstract

To our knowledge, survivorship bias in longitudinal mental health survey studies has not been systematically assessed. We therefore assessed potential survivorship bias among 4,039 respondents invited to complete multiple surveys in 2020 for The COVID-19 Outbreak Public Evaluation (COPE) Initiative. Demographic differences in follow-up survey participation included lower retention of younger adults. Adjusting for demographics, individuals who completed only one or two out of four surveys had higher prevalences of anxiety and depression symptoms in April 2020 (e.g., one-survey *versus* four-survey, anxiety symptoms, aPR=1.30, 95%CI=1.08-1.55,  $P=0.0045$ ; depression symptoms, aPR=1.43, 95%CI=1.17-1.75,  $P=0.0005$ ). Among respondents who completed April-2020 and May-2020 surveys, individuals who experienced incident anxiety or depression symptoms significantly higher odds of lower participation in subsequent follow-up surveys (aOR=1.68, 95%CI=1.49-2.48, aOR=1.56, 95%CI=1.15-2.12, respectively, both  $P<0.005$ ). These findings indicate that longitudinal mental health survey studies may be subject to survivorship bias, which could lead to overly optimistic interpretations of mental health trends.

Czeisler *et al.* 2021  
Uncovering Survivorship Bias in Longitudinal Mental Health Surveys

## Introduction

Determining whether elevated prevalences of adverse mental health symptoms documented in multiple studies<sup>1-6</sup> during the early months of the coronavirus disease 2019 (COVID-19) pandemic persist is critical, both for understanding the mental health toll of the pandemic and for informing decisions about resource allocation. Recent data from a longitudinal survey study suggest that observed increases in prevalences of adverse mental health symptoms may be transient in many cases, in that they reported that anxiety and depression symptom levels declined among participants with at least two longitudinal follow-up measures.<sup>7</sup> However, those data are not consistent with cross-sectional survey data that we and others have recently reported.<sup>8,9</sup> To explore this discrepancy, we investigated the potential of survivorship bias in longitudinal mental health survey data collected in June 2020 and September 2020. Survivorship bias has been reported based on comparisons of survey data on health-related quality of life among cancer survivors who completed surveys at a single versus multiple timepoints.<sup>10</sup> To our knowledge, survivorship bias assessment has not been described in general population longitudinal mental health survey data.

## Results

Overall, 4,042 of 6,548 (61.7%) eligible invited adults completed surveys during the first wave of The COPE Initiative ([www.thecopeinitiative.org](http://www.thecopeinitiative.org)), administered during April 2-8, 2020. Of 4,039 (99.9%) who were included in this analysis, 2,098 (52.0%) completed May-2020 surveys, 1,619 (40.0%) completed June-2020 surveys, and 1,151 (28.5%) completed September-2020 surveys. In total, 1,712 (42.4%) completed one survey, 725 (17.9%) completed two surveys, 663 (16.4%) completed three surveys, and 939 (23.2%) completed all four surveys (Table). There were demographic differences in follow-up survey participation. By age, 76.0% of respondents aged 18-24 years completed one survey, whereas 7.3% completed three or four surveys. In contrast, just 12.1% of respondents aged  $\geq 65$  years completed one survey, compared with 72.5% who completed three of four surveys ( $P$  across groups  $< 0.0001$ ). By race/ethnicity, non-Hispanic White and non-Hispanic Asian respondents had the lowest percentages of one-survey respondents (33.4% and 32.3%, respectively) and highest percentages of four-survey respondents (29.7% and 23.9%), whereas non-Hispanic Black and Latinx respondents had the highest percentages of one-survey respondents (65.7% and 60.7%, respectively) and lowest percentages of four-survey respondents (8.6% and 10.1%);  $P$  across groups  $< 0.0001$ . The percentage of completed surveys also increased with higher education attainment

Czeisler *et al.* 2021

## Uncovering Survivorship Bias in Longitudinal Mental Health Surveys

(e.g., one-survey, high school diploma or less = 52.9%, after bachelor's degree = 33.1%) and higher 2019 household income (e.g., one-survey, USD <25,000 = 51.0%, ≥100,000 = 37.0%); both  $P$  across groups <0.0001.

Compared with respondents who completed all four surveys, those who completed only one or two surveys had significantly higher prevalences of anxiety and depression symptoms in April-2020 surveys (Figure 1). These prevalences remained significant after adjusting for gender, age, race/ethnicity, education attainment, and 2019 household income among respondents (e.g., one-survey *versus* four-survey, anxiety symptoms, aPR = 1.30, 95% CI = 1.08-1.55,  $P$  = 0.0045; depression symptoms, 1.43, 1.17-1.75,  $P$  = 0.0005). Adjusted prevalence of insomnia symptoms in April-2020 were greater among individuals who completed only one survey compared with those who completed all four surveys (aPR = 1.33, 95% CI = 1.09-1.62,  $P$  = 0.0045). Prevalence estimates for April-2020 adverse mental health symptoms among groups of respondents who completed one, two, three, or four surveys—each separately weighted to improve group representativeness of the U.S. population by gender, age, and race/ethnicity—revealed that estimates for anxiety and depression symptoms based on respondents who completed only one or two surveys were significantly higher than those for respondents who completed three or four surveys (e.g., one-survey *versus* four-survey, anxiety symptoms = 25.5% *versus* 19.8%; depression symptoms = 24.1% *versus* 15.6%, both  $P$  <0.0001) (Figure 2). Prevalence estimates for these symptoms did not differ significantly between one- and two-survey respondents, or between three- and four-survey respondents. Estimates for insomnia symptoms were greater among respondents who completed one survey compared with those who completed multiple surveys (e.g., one-survey *versus* two-survey, 19.9% *versus* 16.1%,  $P$  = 0.0097), but not among any of the groups of respondents who completed multiple surveys.

In the comparison of adverse mental health symptom prevalences among respondents who completed only two surveys versus those who completed all four surveys ( $n$  = 939), both two-survey groups (April-2020 and May-2020 only [April-and-May;  $n$  = 584], April-2020 and June-2020 only [April-and-June;  $n$  = 141]) started with significantly higher April-2020 prevalences of anxiety and depression symptoms (April-and-May, anxiety symptoms PR = 1.57, depression symptoms PR = 1.66; April-and-June, 1.91 and 2.02, respectively), and the prevalence ratios increased for the second completed surveys (April-and-May, 2.15 and 1.99, respectively; April-and-June, 2.55 and 2.33, respectively) (Figure 3). Specifically, the prevalence of anxiety symptoms among April-and-May and April-and-June two-survey respondents did not differ between surveys (April-and-May, 25.8% and 28.6%, respectively,  $P$  =

Czeisler *et al.* 2021

## Uncovering Survivorship Bias in Longitudinal Mental Health Surveys

0.19; April-and-June, 31.3% and 33.9%, respectively,  $P = 0.57$ ), whereas the prevalence of anxiety symptoms in four-survey respondents decreased over these intervals (April-and-May, 16.4% and 13.3%,  $P = 0.012$ ; April-and-June, 16.4% and 11.1%,  $P < 0.0001$ ). Similarly, the prevalence of depression symptoms increased significantly among April-and-May two-survey respondents (21.4% and 27.5%, respectively,  $P = 0.0017$ ), but not among four-survey respondents (12.9% and 13.8%,  $P = 0.45$ ). Few differences were observed with insomnia symptoms.

Analysis of respondents who completed April-2020 and May-2020 surveys revealed that, compared with individuals who did not experience anxiety or depression symptoms during these initial surveys, those who experienced incident anxiety or depression symptoms had increased odds of lower participation in future follow-up surveys (i.e., June-2020 and September-2020) (Figure 4). Individuals who experienced anxiety symptoms and depression symptoms in May-2020 after not having done so in April-2020 had 1.68-times (1.49-2.48) and 1.56 (1.15-2.12) increased odds, respectively, of lower participation in June-2020 and September-2020 surveys (both  $P < 0.005$ ). Adjusted odds of follow-up survey participation did not differ by insomnia symptoms, or among those who experienced (1) remission of anxiety or depression symptoms or (2) persistent anxiety or depression symptoms compared with those who did not experience these symptoms in April-2020 or May-2020.

## Discussion

Analysis of longitudinal survey respondents during the COVID-19 pandemic based on their participation in follow-up surveys revealed significant survivorship bias related to: (1) demographic differences in survey retention; (2) differences in initial mental health, adjusted for gender, age, race/ethnicity, education, and income; and (3) higher odds of lower participation in follow-up surveys among respondents who experienced worsened mental health over time. Respondents who completed more than two surveys had significantly lower prevalences of April-2020 adverse mental health symptoms than those who completed only one or two surveys. Moreover, between April-2020 and May-2020 surveys, prevalences of adverse mental health symptoms among individuals who completed all four surveys either decreased (anxiety symptoms) or remained the same (depression symptoms), whereas such prevalences among individuals who completed only these first two surveys remained the same (anxiety symptoms) or increased (depression symptoms). These differing trajectories exacerbated an already-existing disparity between two-survey and four-survey respondents, whereby approximately 1.5-fold increased prevalences of adverse mental health symptoms among two-survey versus four-survey respondents in April 2020

Czeisler *et al.* 2021

## Uncovering Survivorship Bias in Longitudinal Mental Health Surveys

expanded to a 2-fold difference in May 2020. Finally, respondents who experienced incident anxiety or depression symptoms in May 2020 after not having experienced these symptoms in April 2020 had higher odds of completing fewer follow-up surveys. Our findings highlight the importance of assessing survivorship bias in longitudinal mental health survey studies.

In this context, survivorship bias could arise from analyzing and interpreting data from only individuals who are consistent responders to mental health surveys. While survey weighting may be an effective measure to reduce survivorship bias related to demographic differences in retention, it does not address the robust differences between consistent responders and those who were not consistent responders identified in this study, which persisted after adjustment for gender, age, race/ethnicity, education, and income. Addressing this form of bias is of critical importance. Overlooking individuals who do not consistently participate in longitudinal survey studies, who in our study accounted for more than three-quarters of young adults aged 18-24 years and more than forty percent of the entire sample, could be particularly consequential given our finding that participants with consistent participation had lower initial prevalences of adverse mental health symptoms, and that those who experienced incident anxiety or depression symptoms had higher odds of lower participation in follow-up surveys. While the former could be accounted for by adjusting for baseline differences in mental health among cross-sectional versus longitudinal respondents, the latter suggests that differences in mental health trajectories among consistent participants vs. those who drop out make it challenging to account for this bias. Thus, adjusting for baseline alone would not sufficiently address survivorship bias. Generalizing from repeated survey administration among longitudinal respondents without addressing these biases could lead to potentially erroneous conclusions (e.g., that adverse mental health symptom prevalences in a population are improving over time). Survivorship bias precludes extended longitudinal comparisons among non-respondents. However, our finding that the elevated prevalences of mental health symptoms observed among U.S. adults in the early months of the COVID-19 pandemic did not decrease among cross-sectional respondents is consistent with other surveys including cross-sectional respondents,<sup>8,9</sup> suggesting that respondents who consistently participate in longitudinal surveys may not be representative of the U.S. population.

Longitudinal study design has distinct advantages, including increased power to detect causal mechanisms and processes, reduction of reliance on recall bias, and establishment of the order in which events and outcomes occur. However, our findings highlight that sampling and design choices should inform interpretation and generalization of

Czeisler *et al.* 2021

## Uncovering Survivorship Bias in Longitudinal Mental Health Surveys

findings.<sup>11</sup> Further research could focus on strategies that address survivorship bias in longitudinal mental health survey studies, and may include mixed cross-sectional and longitudinal study designs and comparisons between repeated-measures and cross-sectional respondents.

Strengths of this analysis include four timepoints to assess response bias, high initial response (61.7%) and retention (39.6% three-survey or four-survey respondents) rates, utilization of a widely used, clinically validated screening instrument, and implementation of quota sampling and survey weighting to improve sample representativeness by national estimates for gender, age, and race/ethnicity. Moreover, multiple types of survivorship bias were assessed, including differential demographic attrition and demographic-adjusted assessment of both initial mental health as well as odds of participation in follow-up surveys based on changes to mental health over the initial two surveys. Finally, bias was assessed both cross-sectionally and longitudinally. The findings in this report are also subject to limitations, which may include the following. First, while this analysis focused on survivorship bias, these data may be subject to other biases, including recall, response, and social desirability biases; however, quota sampling and survey weighting were employed to reduce demographic-related response bias. Second, though strategies were used to improve sample representativeness, and this Internet-based survey sample should represent the 2020 adult U.S. population by gender, age, and race/ethnicity, it may not fully represent all U.S. adults, especially with regards to Internet access. Third, April-2020 respondents who did not respond to invitations to complete surveys in either May-2020 or June-2020 were not invited to complete September-2020 surveys. Therefore, single-time responders did not have the opportunity to complete September-2020 surveys; however, after having declined two successive invitations, it is unlikely that a substantial number of these respondents would have completed September-2020 surveys. Additionally, whereas the first three surveys were administered approximately monthly, the fourth survey was administered approximately two months after the third survey. Finally, a portion of the sample oversampled from the New York City and Los Angeles metropolitan areas. However, all 50 states and Washington D.C. were represented in the overall sample. Moreover, this analysis was not designed to produce nationwide population estimates for adverse mental health symptoms.

### **Conclusion**

Longitudinal survey-based assessment of mental health is a useful and widely used research method that can provide important insights gained from monitoring the same participants over time. However, our data reveal that

Czeisler *et al.* 2021

## Uncovering Survivorship Bias in Longitudinal Mental Health Surveys

respondents who provided more than two datapoints during a longitudinal mental health survey both started off with better mental health and appeared to be more resilient than those who did not. Survivorship bias assessment should be applied before conclusions based on repeated assessments from participants in a longitudinal study are generalized.

### Methods

#### *Study design*

We conducted a retrospective analysis of U.S. participants in The COVID-19 Outbreak Public Evaluation (COPE) Initiative.<sup>12</sup> Internet-based surveys were administered through Qualtrics, LLC<sup>13</sup> to 4,042 U.S. adults aged  $\geq 18$  years during April 2-8, 2020 (April-2020). The sample included 3,010 (74.5%) from across the U.S., plus additional respondents from New York City (n = 507 [12.5%]) and Los Angeles (n = 525 [13.0%]) to recruit participants from cities with different prevalences of SARS-CoV-2 during the early months of the pandemic.<sup>14</sup> All respondents were invited to complete follow-up surveys during May 5-12, 2020 (May-2020) and June 24-30, 2020 (June-2020).<sup>2</sup> Respondents who completed at least one of these follow-up surveys were also invited to complete surveys during August 28-September 6, 2020 (September-2020). One respondent was inadvertently invited to and completed a September-2020 survey after not having participated in May-2020 or June-2020 surveys and was excluded from this analysis. Quota sampling and survey weighting (iterative proportional fitting with weights trimmed between 0.3 and 3.0, inclusive) were employed to improve cross-sectional survey representativeness by gender, age, and race/ethnicity using 2010 U.S. Census population estimates. Given that available Census data did not report on gender, for this analysis, Census data on sex was used to for weighting of dichotomized gender (female or male). To dichotomize gender, two respondents who identified as “Other” gender were not included in this analysis.

All surveys were designed to take approximately 15 minutes to complete and contained demographic questions and assessed public attitudes, behaviors, and beliefs about the COVID-19 pandemic and its mitigation, along with mental and behavioral health symptoms. Validated screening instruments and modified questions from instruments were used. Among the mental health screening instruments were the clinically validated 4-item Patient Health Questionnaire (PHQ),<sup>15</sup> comprised of abbreviated versions of the screening instruments used in the *Fancourt et al.* study<sup>7</sup> for the assessment of symptoms of anxiety (2-item Generalized Anxiety Disorder [GAD] versus the 7-item

Czeisler *et al.* 2021

Uncovering Survivorship Bias in Longitudinal Mental Health Surveys

GAD) and of depression (2-item PHQ versus the 9-item PHQ), along with the 2-item Sleep Condition Indicator (SCI-02), and a brief clinically validated screening instrument for the assessment of symptoms of insomnia.<sup>16</sup>

### *Analysis Plan*

To assess potential survivorship bias among mental health survey respondents, we conducted a retrospective analysis of anxiety, depression, and insomnia symptoms collected using the 4-item PHQ and 2-item SCI among respondents with one, two, three, or four completed surveys. We explored whether any mental health survivorship bias could be explained by: (1) demographic differences in repeated measures respondents (i.e., cross-sectional versus longitudinal respondents differ in their demographics, but the prevalence of adverse mental health symptoms among members of a demographic subgroup do not differ); or (2) differences within demographic subgroups. Demographic survey weighting could considerably reduce bias in the first, but not second scenario.

Potential demographic differences in survey retention were assessed using chi-square tests for differences between the percentages of respondents who completed one, two, three, or four surveys by gender (dichotomized as female or male), age group in years (categorized as 18-24, 25-44, 45-64, or  $\geq 65$ ), combined race/ethnicity (categorized as non-Latinx Asian [Asian], non-Latinx Black [Black], non-Latinx other race or multiple races [Other], non-Latinx White [White], or Hispanic or Latino [Latinx]), education attainment (categorized as  $\leq$  high school diploma, college or some college, after bachelor's degree, or unknown), and 2019 household income in United States Dollars (USD) (categorized as  $<25,000$ ,  $25,000-49,999$ ,  $50,000-99,999$ ,  $\geq 100,000$ , or unknown).

To assess for potential survivorship bias, weighted Poisson regression models with robust standard error estimators were used to estimate prevalence ratios (PRs) and 95% confidence intervals (CIs) for April-2020 anxiety symptoms ( $\geq 3$  out of 6 on the GAD-2 subscale of the PHQ-4), depression symptoms ( $\geq 3$  out of 6 on the PHQ-2 subscale of the PHQ-4), and insomnia symptoms ( $> 2$  out of 8 on the SCI-02) based on the number of completed surveys, both unadjusted and adjusted for gender, age group, race/ethnicity, education attainment, and 2019 household income. Next, to assess for potential differences in population estimates for prevalences of anxiety and depression symptoms in April 2020 using samples with differing retention over time, the April-2020 sample was separated into four samples: respondents who completed one, two, three, or four surveys through September 2020. Each sample was independently weighted to improve representativeness of the U.S. population by gender, age, and race/ethnicity. Prevalences of anxiety and depression symptoms were estimated based on these demographically



Czeisler *et al.* 2021

## Uncovering Survivorship Bias in Longitudinal Mental Health Surveys

representative samples. Chi-square tests were used to assess for significantly different point-estimates for prevalence of April-2020 anxiety or depression symptoms between samples.

To evaluate potential differences in trajectories of adverse mental health symptoms over time by number of completed surveys, prevalences of symptoms of anxiety, depression, and insomnia over two timepoints (April-2020 to May-2020 and April-2020 to June-2020) among respondents who completed all four surveys were compared with those who completed two total surveys (April-2020 and May-2020 only or April-2020 and June-2020 only) (two total surveys, one of three follow-up surveys, 33.3% retention rate). Respondents who participated in all four surveys completed three of three follow-up surveys (100% retention rate), whereas respondents who participated in two surveys only completed one of three follow-up surveys (33% retention rate). Chi-square tests were used to assess for significant differences in initial (April-2020) prevalence between samples, and for significant differences over time (April-2020 *versus* May-2020) within each sample. Prevalence ratios were used to estimate the difference in prevalence between samples over time.

Finally, to assess whether changes in mental health symptoms were associated with participation in follow-up surveys, weighted ordinal logistic regressions were used to estimate odds ratios for lower participation in follow-up surveys in June-2020 and September-2020 among respondents who completed April-2020 and May-2020 surveys based on symptoms of anxiety, depression, or insomnia reported in these two initial surveys. For each of these adverse mental health conditions over April-2020 and May-2020, respondents were categorized as having no symptoms at either timepoint, symptoms at both timepoints, incident symptoms in May-2020 after not having experienced symptoms in April-2020, or remitted symptoms in May-2020 after having experienced symptoms in April-2020. Odds ratios for lower participation in follow-up surveys were estimated with the dependent variables ordered as 0 = completed both follow-up surveys; 1 = completed one follow-up survey (either June-2020 or September-2020); and 2 = completed neither follow-up survey, both unadjusted and adjusted for gender, age group, race/ethnicity, education attainment, and 2019 household income.

### *Study approval and informed consent*

The Monash University Human Research Ethics Committee approved the study (#24036). This study was also reviewed by the U.S. Centers for Disease Control and Prevention (C.D.C.) and was conducted consistent with applicable federal law and C.D.C. policy: 45 C.F.R. part 46, 21 C.F.R. part 56; 42 U.S.C. Sect. 241(d); 5 U.S.C.

Czeisler *et al.* 2021

Uncovering Survivorship Bias in Longitudinal Mental Health Surveys

Sect. 552a; 44 U.S.C. Sect. 3501 et seq. Participants provided electronic informed consent. Investigators received anonymized responses. Statistical significance was assessed at  $\alpha = 0.025$  to account for multiple comparisons.

Rounded weighted values are reported unless otherwise specified. Analyses were conducted in R (version 4.0.2; The R Foundation)<sup>17</sup> with the R survey package (version 3.29)<sup>18-20</sup> and Python (version 3.7.8).<sup>21</sup>

### **Data availability statement**

All relevant data supporting the findings in this study are available from the corresponding author upon reasonable request.

Czeisler *et al.* 2021  
Uncovering Survivorship Bias in Longitudinal Mental Health Surveys

## References

1. Pierce M, Hope H, Ford T, et al. Mental health before and during the COVID-19 pandemic: a longitudinal probability sample survey of the UK population. *Lancet Psychiatry* 2020; 7(10): 883-92. doi: 10.1016/S2215-0366(20)30308-4.
2. Czeisler MÉ, Lane RI, Petrosky E, et al. Mental Health, Substance Use, and Suicidal Ideation During the COVID-19 Pandemic - United States, June 24-30, 2020. *MMWR Morb Mortal Wkly Rep* 2020; 69(32): 1049-57. doi: 10.15585/mmwr.mm6932a1.
3. Wang C, Pan R, Wan X, et al. Immediate Psychological Responses and Associated Factors during the Initial Stage of the 2019 Coronavirus Disease (COVID-19) Epidemic among the General Population in China. *Int J Environ Res Public Health*. 2020;17(5). pii: E1729. doi: 10.3390/ijerph17051729.
4. Li S, Wang Y, Xue J, Zhao N, Zhu T. The Impact of COVID-19 Epidemic Declaration on Psychological Consequences: A Study on Active Weibo Users. *Int J Environ Res Public Health*. 2020 Mar 19;17(6):2032. doi: 10.3390/ijerph17062032.
5. Bonati M, Campi R, Zanetti M, Cartabia M, Scarpellini F, Clavenna A, Segre G. Psychological distress among Italians during the 2019 coronavirus disease (COVID-19) quarantine. *BMC Psychiatry*. 2021 Jan 8;21(1):20. doi: 10.1186/s12888-020-03027-8.
6. Browning MHEM, Larson LR, Sharaievska I, Rigolon A, McAnirlin O, Mullenbach L, Cloutier S, Vu TM, Thomsen J, Reigner N, Metcalf EC, D'Antonio A, Helbich M, Bratman GN, Alvarez HO. Psychological impacts from COVID-19 among university students: Risk factors across seven states in the United States. *PLoS One*. 2021 Jan 7;16(1):e0245327. doi: 10.1371/journal.pone.0245327.
7. Fancourt D, Steptoe A, Bu F. Trajectories of anxiety and depressive symptoms during enforced isolation due to COVID-19 in England: a longitudinal observational study. *Lancet Psychiatry*. 2021;8(2):141-149. doi: 10.1016/S2215-0366(20)30482-X. Epub 2020 Dec 9.

Czeisler *et al.* 2021

Uncovering Survivorship Bias in Longitudinal Mental Health Surveys

8. Czeisler MÉ, Lane RI, Wiley JF, et al. Follow-up Survey of US Adult Reports of Mental Health, Substance Use, and Suicidal Ideation During the COVID-19 Pandemic, September 2020. *JAMA Netw Open* (in press) 2021.
9. CDC, National Center for Health Statistics. Indicators of anxiety or depression based on reported frequency of symptoms during the last 7 days. Household Pulse Survey. Atlanta, GA: US Department of Health and Human Services, CDC, National Center for Health Statistics; 2020.  
<https://www.cdc.gov/nchs/covid19/pulse/mental-health.htm>
10. Ramsey I, de Rooij BH, Mols F, Corsini N, Horevoorts NJE, Eckert M, van de Poll-Franse LV. Cancer survivors who fully participate in the PROFILES registry have better health-related quality of life than those who drop out. *J Cancer Surviv*. 2019 Dec;13(6):829-839. Epub 2019 Sep 6. doi: 10.1007/s11764-019-00793-7.
11. Pierce M, McManus S, Jessop C, et al. Says who? The significance of sampling in mental health surveys during COVID-19. *Lancet Psychiatry* 2020; 7(7): 567-8. doi: 10.1016/S2215-0366(20)30237-6.
12. The COVID-19 Outbreak Public Evaluation Initiative. 2020-2021. [www.thecopeinitiative.org](http://www.thecopeinitiative.org)
13. Qualtrics. April 2020 ed. Provo, Utah, USA. First release: 2005.
14. Czeisler MÉ, Howard ME, Robbins R, et al. COVID-19: Public Compliance with and Public Support for Stay-at-Home Mitigation Strategies. *medRxiv*. Published online April 2020. [Preprint Manuscript]. doi: 10.1101/2020.04.22.20076141.
15. Löwe B, Wahl I, Rose M, et al. A 4-item measure of depression and anxiety: validation and standardization of the Patient Health Questionnaire-4 (PHQ-4) in the general population. *J Affect Disord*. 2010;122(1-2):86-95. doi: 10.1016/j.jad.2009.06.019.
16. Espie CA, Kyle SD, Hames P, et al. The Sleep Condition Indicator: a clinical screening tool to evaluate insomnia disorder. *BMJ Open*. 2014;4(3):e004183. doi: 10.1136/bmjopen-2013-004183.
17. R Core Team. R: A language and environment for statistical computing. R Foundation for Statistical Computing, Vienna, Austria. 2020. <https://www.R-project.org/>.

Czeisler *et al.* 2021

Uncovering Survivorship Bias in Longitudinal Mental Health Surveys

18. Lumley T. "Analysis of Complex Survey Samples." Journal of Statistical Software, 9(1), 1-19. R package version 2.2; 2004.
19. Lumley T. Complex Surveys: A Guide to Analysis Using R. John Wiley and Sons; 2010.
20. Lumley T. "survey: analysis of complex survey samples." R package version 4.0; 2020.
21. Van Rossum G, Drake FL. Python 3 Reference Manual. Scotts Valley, CA: CreateSpace; 2009.

## **Acknowledgements**

We thank all survey respondents. The present work was supported by institutional grants to Monash University from the United States Centers for Disease Control and Prevention Foundation with funding from BNY Mellon, and from WHOOP, Inc., and by institutional support from Philips Respironics and Alexandra Drane to Brigham & Women's Hospital, the Turner Institute for Brain and Mental Health, Monash University, and the Institute for Breathing and Sleep, Austin Hospital. M.É.C. gratefully acknowledges support from a 2020-2021 Fulbright Fellowship sponsored by The Kinghorn Foundation.

## **Author Information**

### **Affiliations**

**Turner Institute for Brain and Mental Health, Monash University, Melbourne, Victoria, Australia**

Mark É. Czeisler, Joshua F. Wiley, Charles A. Czeisler, Shantha M.W. Rajaratnam & Mark E. Howard

**Institute for Breathing and Sleep, Austin Health, Melbourne, Victoria, Australia**

Mark É. Czeisler, Shantha M.W. Rajaratnam & Mark E. Howard

**Department of Psychiatry, Brigham & Women's Hospital, Boston, Massachusetts, United States**

Mark É. Czeisler

**Division of Sleep and Circadian Disorders, Departments of Medicine and Neurology, Brigham & Women's Hospital, Boston, Massachusetts, United States**

Czeisler *et al.* 2021

Uncovering Survivorship Bias in Longitudinal Mental Health Surveys

Charles A. Czeisler & Shantha M.W. Rajaratnam

**Division of Sleep Medicine, Harvard Medical School, Boston, Massachusetts, United States**

Charles A. Czeisler & Shantha M.W. Rajaratnam

**Division of Medicine, University of Melbourne, Melbourne, Victoria, Australia**

Mark E. Howard

### **Contributions**

M.É.C., C.A.C., S.M.W.R., and M.E.H. designed the study. M.É.C. and J.F.W. conceived the manuscript. M.É.C. worked with Qualtrics, LLC research services to administer the survey, and analyzed the data with guidance from J.F.W. M.É.C. created the table and all figures. M.É.C. wrote the first paper draft. All authors provided critical input and revisions to the paper. S.M.W.R. and M.E.H. supervised.

### **Ethics declarations**

### **Competing interests**

All authors report institutional grants to Monash University from the CDC Foundation, with funding from BNY Mellon, and from WHOOP, Inc. MC reported grants from the Fulbright Foundation sponsored by The Kinghorn Foundation and personal fees from Vanda Pharmaceuticals Inc. CC reported receiving personal fees from Teva Pharma Australia, Inselspital Bern, the Institute of Digital Media and Child Development, the Klarman Family Foundation, Tencent Holdings Ltd, the Sleep Research Society Foundation, and Physician's Seal; receiving grants to Brigham and Women's Hospital from the Federal Aviation Administration, the National Health Lung and Blood Institute, the National Institute on Aging, the National Aeronautics and Space Administration, and the National Institute of Occupational Safety and Health R01-OH-011773; receiving personal fees from and equity interest in Vanda Pharmaceuticals Inc.; educational and research support from Jazz Pharmaceuticals Plc, Philips Respironics Inc., Regeneron Pharmaceuticals, and Sanofi S.A.; an endowed professorship provided to Harvard Medical School from Cephalon, Inc.; an institutional gift from Alexandra Drane; and a patent on Actiwatch-2 and Actiwatch-Spectrum devices, with royalties paid from Philips Respironics, Inc. CC's interests were reviewed and managed by Brigham and Women's Hospital and Mass General Brigham in accordance with their conflict of interest policies. CC also served as a voluntary board member for the Institute for Experimental Psychiatry Research Foundation and a

Czeisler *et al.* 2021

Uncovering Survivorship Bias in Longitudinal Mental Health Surveys

voluntary consensus panel chair for the National Sleep Foundation. SR reported receiving grants and personal fees from Cooperative Research Centre for Alertness, Safety and Productivity, receiving grants and institutional consultancy fees from Teva Pharma Australia, and institutional consultancy fees from Vanda Pharmaceuticals, Circadian Therapeutics, BHP Billiton, and Herbert Smith Freehills. No other disclosures were reported.

### **Disclaimer**

This manuscript reflects the views of the authors and does not necessarily represent the official position of the Centers for Disease Control and Prevention.

### **Materials & Correspondence**

Correspondence to Mark Czeisler ([mark.czeisler@fulbrightmail.org](mailto:mark.czeisler@fulbrightmail.org)).

Mark É. Czeisler, A.B., Australian-American Fulbright Scholar and Ph.D. Candidate

Turner Institute for Brain and Mental Health, Monash University,

Level 5, 18 Innovation Walk, Clayton Campus, Clayton, 3800, Victoria, Australia

### **Table and Figures**

**Table.** Respondent characteristics, overall and by number of completed surveys

**Figure 1.** Adjusted prevalence ratios of anxiety, depression, and insomnia symptoms in April 2020 by number of completed surveys

**Figure 2.** Estimated prevalences of symptoms of anxiety, depression, and insomnia in April 2020 based on total number of completed surveys, with each group weighted to population estimates for gender, age, and race/ethnicity

**Figure 3.** Longitudinal comparisons of anxiety and depression symptom prevalences by number of repeated measures

**Figure 4.** Odds of lower participation in follow-up surveys based on mental health in earlier surveys

Czeisler *et al.* 2021  
Uncovering Survivorship Bias in Longitudinal Mental Health Surveys

**Table. Respondent characteristics, overall and by number of completed surveys**

	Number of respondents				Number of completed surveys						Chi-Sq <i>P</i>		
	Unweighted		Weighted		One		Two		Three			Four	
	n	(%)	n	(%)	n	(%)	n	(%)	n	(%)	n	(%)	
<b>Total</b>	<b>4039</b>	<b>(100)</b>	<b>4039</b>	<b>(100)</b>	<b>1712</b>	<b>(42.4)</b>	<b>725</b>	<b>(17.9)</b>	<b>663</b>	<b>(16.4)</b>	<b>939</b>	<b>(23.2)</b>	-
<b>Gender</b>													
Male	1814	(44.9)	1986	(49.2)	872	(43.9)	329	(16.6)	307	(15.5)	477	(24.0)	0.032
Female	2225	(55.1)	2053	(50.8)	840	(40.9)	395	(19.2)	356	(17.3)	462	(22.5)	
<b>Age group in years</b>													
18-24	456	(11.3)	528	(13.1)	401	(76.0)	88	(16.7)	22	(4.2)	17	(3.1)	<0.0001*
25-44	1335	(33.1)	1414	(35.0)	809	(57.2)	269	(19.0)	182	(12.8)	155	(11.0)	
45-64	1420	(35.2)	1403	(34.7)	418	(29.8)	261	(18.6)	291	(20.8)	433	(30.8)	
≥65	828	(20.5)	693	(17.2)	84	(12.1)	107	(15.4)	168	(24.2)	335	(48.3)	
<b>Race/ethnicity</b>													
White, non-Hispanic	2937	(72.7)	2575	(63.7)	860	(33.4)	459	(17.8)	491	(19.1)	765	(29.7)	<0.0001*
Black, non-Hispanic	329	(8.1)	493	(12.2)	324	(65.7)	72	(14.6)	55	(11.1)	43	(8.6)	
Asian, non-Hispanic	224	(5.5)	189	(4.7)	61	(32.3)	45	(24.0)	37	(19.8)	45	(23.9)	
Other, non-Hispanic	126	(3.1)	122	(3.0)	66	(54.4)	22	(18.5)	13	(11.0)	20	(16.1)	
Latinx	423	(10.5)	660	(16.3)	401	(60.7)	126	(19.0)	67	(10.1)	67	(10.1)	
<b>Education attainment</b>													
≤ High school diploma	735	(18.2)	777	(19.2)	411	(52.9)	137	(17.7)	86	(11.0)	143	(18.4)	<0.0001*
College or some college	2484	(61.5)	2473	(61.2)	1023	(41.4)	445	(18.0)	426	(17.2)	579	(23.4)	
> Bachelor's degree	792	(19.6)	756	(18.7)	250	(33.1)	142	(18.8)	150	(19.8)	215	(28.4)	
Unknown	28	(0.7)	34	(0.8)	28	(83.9)	1	(2.7)	2	(5.4)	3	(8.0)	
<b>2019 Household income (USD)</b>													
<25,000	578	(14.3)	607	(15.0)	309	(51.0)	111	(18.3)	86	(14.1)	101	(16.7)	<0.0001*
25,000-49,999	816	(20.2)	834	(20.6)	395	(47.4)	155	(18.5)	112	(13.5)	172	(20.6)	
50,000-99,999	1291	(32.0)	1271	(31.5)	489	(38.5)	227	(17.9)	235	(18.5)	320	(25.1)	
≥100,000	1156	(28.6)	1125	(27.9)	416	(37.0)	202	(17.9)	203	(18.0)	305	(27.1)	
Unknown	198	(4.9)	202	(5.0)	103	(51.0)	31	(15.1)	27	(13.3)	42	(20.6)	

USD = United States Dollars

\* Statistically significant difference ( $P < 0.025$ ).

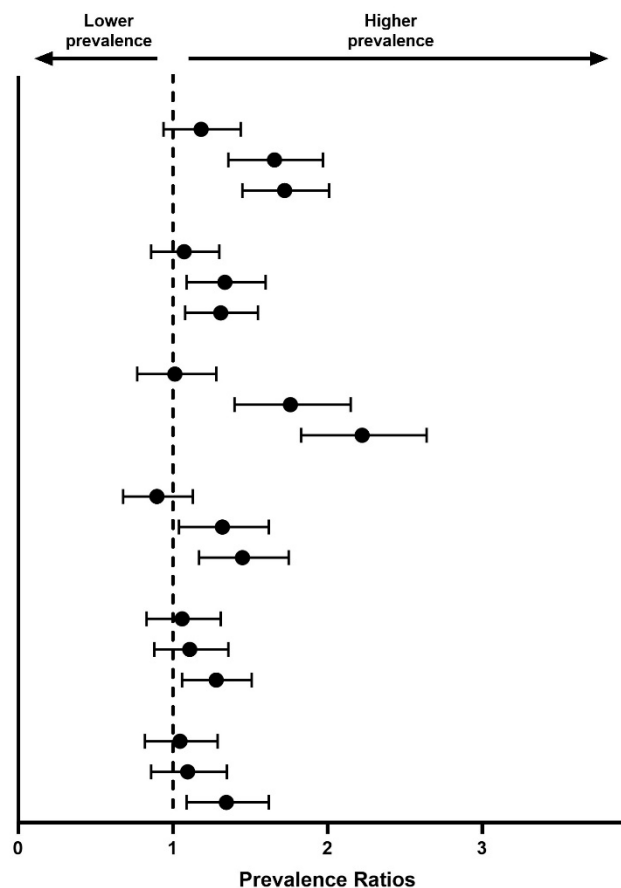
The "Other, non-Hispanic," category includes respondents who identified as not Hispanic or Latino and as more than one race or as American Indian or Alaska Native, Native Hawaiian or Pacific Islander, or Other.



Czeisler *et al.* 2021  
Uncovering Survivorship Bias in Longitudinal Mental Health Surveys

**Figure 1. Adjusted prevalence ratios of anxiety, depression, and insomnia symptoms in April 2020 by number of completed surveys**

Measure	Number of completed surveys	Prevalence ratios and 95% Confidence Intervals	
<b>Anxiety symptoms</b>	Reference: Four	PR (95% CI)	P
	Three	1.17 (0.94, 1.44)	0.15
	Two	1.64 (1.36, 1.97)*	<0.0001
	One	1.71 (1.45, 2.01)*	<0.0001
	Reference: Four	aPR (95% CI)	P
	Three	1.06 (0.86, 1.30)	0.61
	Two	1.32 (1.09, 1.60)*	0.0041
<b>Depression symptoms</b>	Reference: Four	PR (95% CI)	P
	Three	0.99 (0.77, 1.28)	0.95
	Two	1.73 (1.40, 2.15)*	<0.0001
	One	2.20 (1.83, 2.64)*	<0.0001
	Reference: Four	aPR (95% CI)	P
	Three	0.88 (0.68, 1.13)	0.30
	Two	1.30 (1.04, 1.62)*	0.012
<b>Insomnia symptoms</b>	Reference: Four	PR (95% CI)	P
	Three	1.04 (0.83, 1.31)	0.73
	Two	1.09 (0.88, 1.36)	0.42
	One	1.27 (1.06, 1.51)*	0.0097
	Reference: Four	aPR (95% CI)	P
	Three	1.03 (0.82, 1.29)	0.83
	Two	1.08 (0.86, 1.35)	0.51
	One	1.33 (1.09, 1.62)*	0.0045



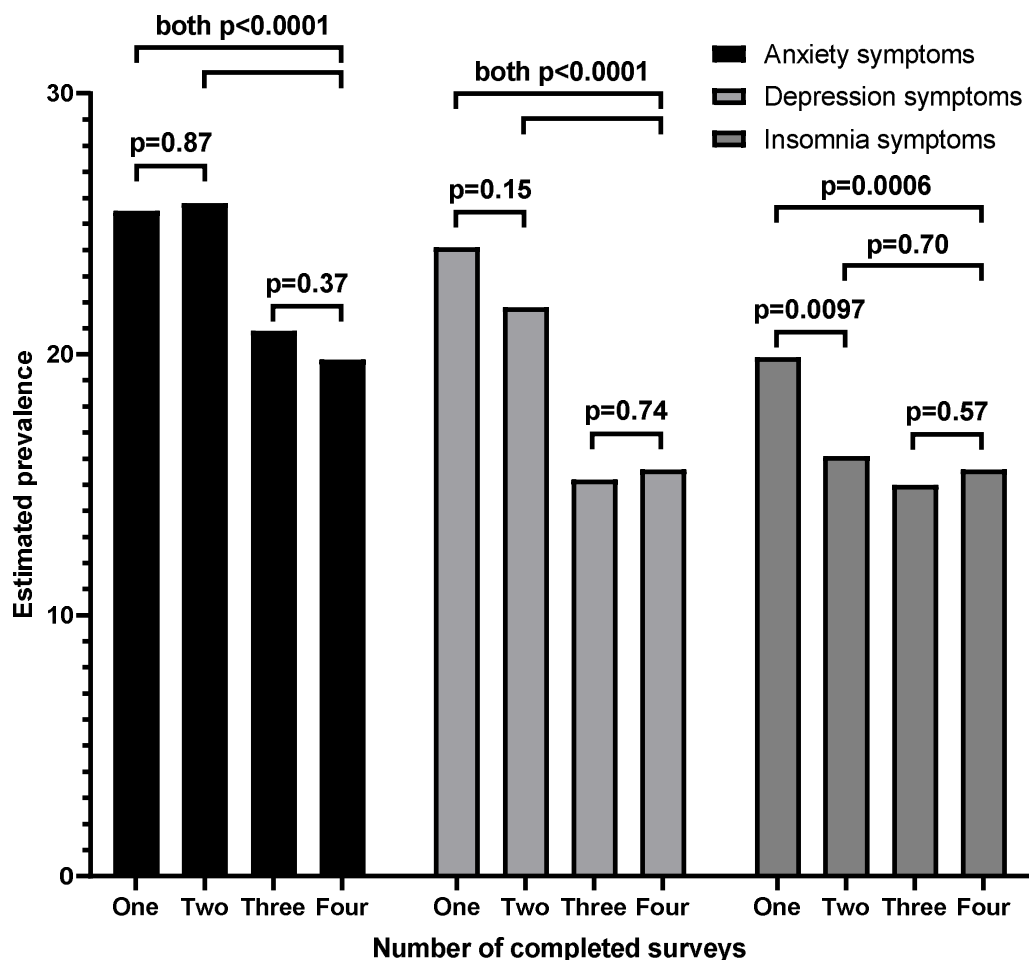
Adjusted prevalence ratio estimates were adjusted for gender, age group, race/ethnicity, education attainment, and 2019 household income.

\* Statistically significant difference (P < 0.025).

**Interpretation:** prevalence significantly above one indicates that adjusting for specified demographic factors, compared with respondents who would eventually complete all four surveys, respondents in a given group (i.e., who completed one, two, or three total surveys) more commonly reported adverse mental health symptoms in the first survey (April 2020), which all respondents completed.

Czeisler *et al.* 2021  
Uncovering Survivorship Bias in Longitudinal Mental Health Surveys

**Figure 2. Estimated prevalences of symptoms of anxiety, depression, and insomnia in April 2020 based on total number of completed surveys, with each group weighted to population estimates for gender, age, and race/ethnicity**

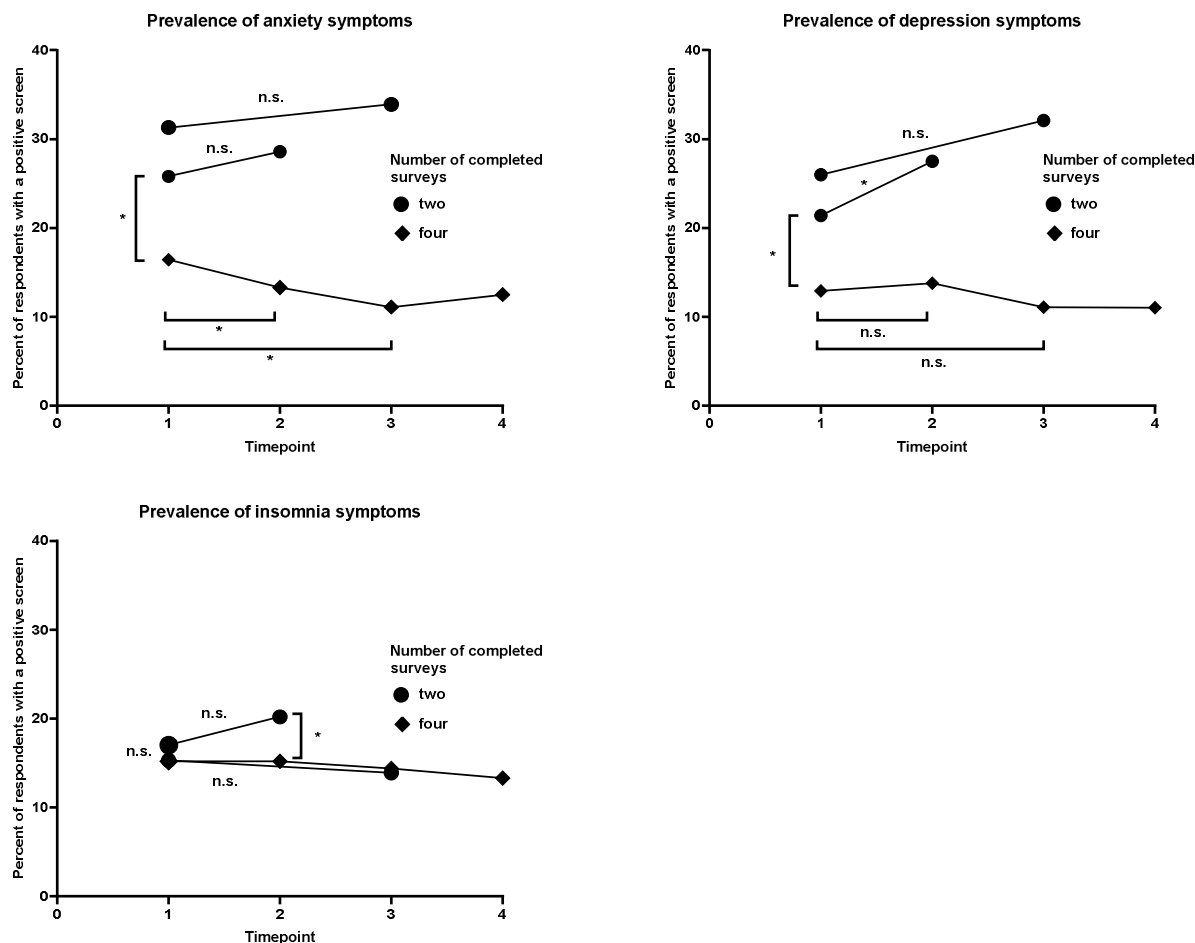


Number of completed surveys	Number of respondents		Anxiety symptoms		Depression symptoms		Insomnia symptoms	
	n	(%)	n	(%)	n	(%)	n	(%)
<b>Total</b>	<b>4039</b>	<b>(100)</b>	<b>942</b>	<b>(23.3)</b>	<b>807</b>	<b>(20.0)</b>	<b>698</b>	<b>(17.3)</b>
One	1587	(39.3)	405	(25.5)	382	(24.1)	316	(19.9)
Two	731	(18.1)	189	(25.8)	159	(21.8)	118	(16.1)
Three	700	(17.3)	146	(20.9)	106	(15.2)	105	(15.0)
Four	1021	(25.3)	202	(19.8)	159	(15.6)	160	(15.6)
<b>Chi-Square</b>			<b>P</b>		<b>P</b>		<b>P</b>	
One vs Two			0.87		0.15		0.0097*	
One vs Three			0.0050*		<0.0001*		0.0012*	
One vs Four			<0.0001*		<0.0001*		0.0006*	
Two vs Three			0.0032*		<0.0001*		0.44	
Two vs Four			<0.0001*		<0.0001*		0.70	
Three vs Four			0.37		0.74		0.57	

\* Statistically significant difference (P < 0.025).

Czeisler *et al.* 2021  
Uncovering Survivorship Bias in Longitudinal Mental Health Surveys

**Figure 3. Longitudinal comparisons of anxiety and depression symptom prevalences by number of repeated measures**



Timepoints: 1 = April 2020; 2 = May 2020; 3 = June 2020; 4 = September 2020

Two-survey respondents completed surveys in April 2020 and EITHER May 2020 only OR June 2020 only

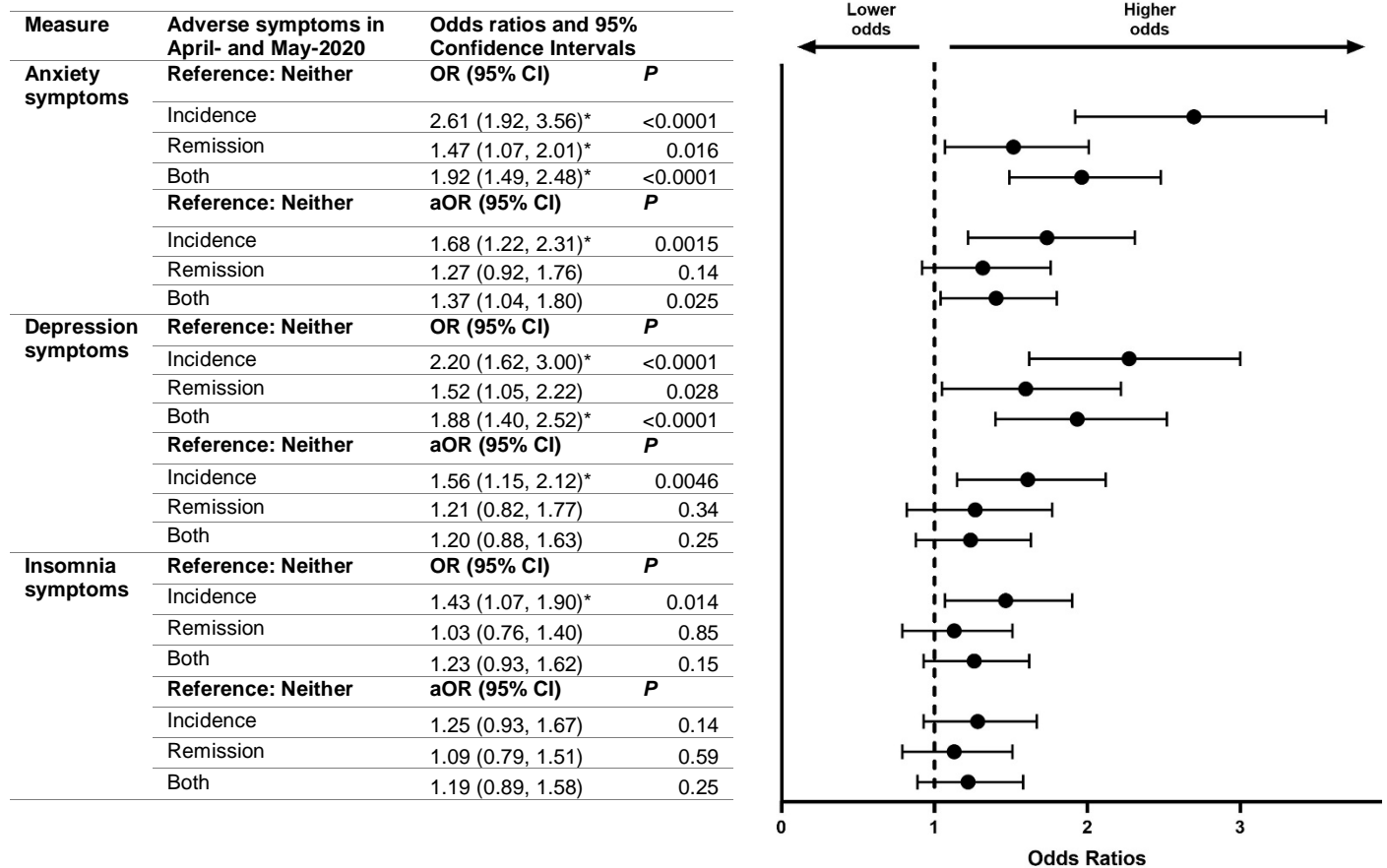
\* Statistically significant difference (P < 0.025).

n.s. Not a statistically significant difference

Prevalence	Symptoms of:					
	Anxiety		Depression		Insomnia	
	n	(%)	n	(%)	n	(%)
<b>Four-survey respondents (n = 939)</b>						
April 2020	154	(16.4)	121	(12.9)	143	(15.2)
May 2020	125	(13.3)	130	(13.8)	142	(15.2)
<b>Two-survey respondents (April and May only, n = 584)</b>						
April 2020	151	(25.8)	125	(21.4)	99	(17)
May 2020	167	(28.6)	161	(27.5)	118	(20.2)
<b>Two-survey respondents (April and June only, n = 141)</b>						
April 2020	44	(31.3)	37	(26)	22	(15.3)
June 2020	48	(33.9)	45	(32.1)	20	(13.9)
<b>Prevalence ratios (Two versus Four survey respondents)</b>						
<b>April and May 2020</b>						
April 2020	-	1.57	-	1.66	-	1.12
May 2020	-	2.15	-	1.99	-	1.33
<b>April and June 2020</b>						
April 2020	-	1.91	-	2.02	-	1.01
June 2020	-	2.55	-	2.33	-	0.91

Czeisler *et al.* 2021  
Uncovering Survivorship Bias in Longitudinal Mental Health Surveys

**Figure 4. Odds of lower participation in follow-up surveys based on mental health in earlier surveys**



Adjusted odds ratio estimates for lower participation in follow-up surveys were adjusted for gender, age group, race/ethnicity, education attainment, and 2019 household income.

\* Statistically significant difference ( $P < 0.025$ ).

Incidence = presence of adverse mental health symptoms in May 2020 after absence of such symptoms in April 2020

Remission = absence of adverse mental health symptoms in May 2020 after presence of such symptoms in April 2020

**Interpretation:** odds significantly above one indicates that adjusting for specified demographic factors, compared with respondents who did not experience adverse mental health symptoms in either April 2020 or May 2020, respondents in a given group (Incidence, Remission, or Both) had higher odds of having completed fewer follow-up surveys for which they received invitations in June 2020 and September 2020.