

ORIGINAL ARTICLE

Patients with Asthma and Chronic Obstructive Pulmonary Disease (COPD) have increased levels of plasma inflammatory mediators upregulated in severe COVID-19.

Nathalie Acevedo¹, Jose Miguel Escamilla-Gil¹, Héctor Espinoza², Ronald Regino¹, Jonathan Ramírez¹, Lucila Florez de Arco³, Rodolfo Dennis⁴, Carlos Torres-Duque⁵, Luis Caraballo¹.

¹Institute for Immunological Research, University of Cartagena, 130014 Cartagena, Colombia.

²Faculty of Engineering, University of Cartagena, 130014 Cartagena, Colombia.

³Clinica Respiratoria y de Alergias, Cartagena, Colombia.

⁴Fundación Cardioinfantil, Bogotá, Colombia

⁵Fundación Neumológica Colombiana, Bogotá, Colombia.

Correspondence:

Nathalie Acevedo MD. PhD.

Institute for Immunological Research.

University of Cartagena, Campus Zaragocilla.

Area Ciencias de la Salud, Laboratorio de Inmunología.

130014 Cartagena, Colombia.

nacevedoc@unicartagena.edu.co

Conflict of interest:

The authors do not have conflict of interest.

Funding:

This study was financed by the Ministry of Science (Republic of Colombia, Grant 756-2017) and the University of Cartagena.

Author approval:

All authors have seen and approved the manuscript.

Abstract

Background: Respiratory diseases such as chronic obstructive pulmonary disease (COPD) have been associated with increased risk of severe SARS-CoV-2 infection, but the mechanisms and putative immune pathways are unclear. Besides, increased levels of several immune mediators in patients with severe coronavirus disease 19 (COVID-19) have been reported.

Objective: To perform an immunoproteomic profiling of dysregulated plasma proteins in patients with asthma and COPD and to evaluate their relationship with biomarkers of severe COVID-19.

Methods: 92 protein biomarkers were quantified in 315 plasma samples from adult subjects (age 40-90 years) including 118 asthmatics, 99 COPD patients and 98 healthy controls, that have been recruited in two reference pneumology clinics in Colombia before the beginning of the COVID-19 pandemic.

Results: Forty-one plasma proteins showed differences between patients and controls. Asthmatic patients have increased levels in IL-6 and CCL3 while COPD patients have a broader systemic inflammatory dysregulation driven by HGF, OPG, and several chemokines (CXCL9, CXCL10,

CXCL11, CX3CL1, CXCL1, MCP-3, MCP-4, CCL3, CCL4 and CCL11). Functional annotation revealed their enrichment in chemokine signaling pathways related with response to viral infections. Some of these proteins were found up-regulated upon SARS-Cov-2 infection of Calu-3 cells. Also, HPG, CXCL9, CXCL10, IL-6, MCP-3, TNF and EN-RAGE have been found increased in patients with severe COVID-19. HGF, the most significant protein in this study as well as its correlated proteins could be associated with the increased risk of severe COVID-19 in COPD patients.

Conclusions: Asthma and COPD patients have altered plasma levels of proteins that have been found associated with increased risk of severe COVID-19. The reasons for sharing these profiles with this infection are unknown, but our study suggest that adult patients with asthma and COPD have a systemic dysregulation in chemokine networks that could make them more susceptible to severe COVID-19.

Keywords

Asthma, biomarkers, chemokine, comorbidity, COPD, COVID-19, CXCL9, HGF, immunoprofiling, pathways, plasma, proteomics, proximity ligation assays, risk, SARS-CoV-2, severe COVID-19, virus.

Abbreviations

CCL3: C-C motif chemokine ligand 3 or Macrophage inflammatory protein 1-alpha

CCL4: C-C motif chemokine ligand 4 or Macrophage inflammatory protein 1-beta

CCL11: C-C Motif chemokine ligand 11 or eotaxin-1

COPD: Chronic obstructive pulmonary disease

COVID-19: Coronavirus disease 19

CSF-1: Colony stimulating factor 1

CST5: Cystatin-D

CX3CL1: C-X3-C motif chemokine ligand 1 (fractalkine)

CXCL1: C-X-C motif chemokine ligand 1 or Neutrophil-activating protein 3

CXCL5: C-X-C motif chemokine ligand 5 or Neutrophil-activating protein 78

CXCL9: C-X-C motif chemokine ligand 9 or Monokine induced by interferon-gamma

CXCL10: C-X-C motif chemokine ligand 10 or IP-10

CXCL11: C-X-C motif chemokine ligand 11 or interferon-inducible T-cell alpha chemoattractant

EN-RAGE: extracellular newly identified receptor for advanced glycation end-products binding protein or S100 Calcium Binding Protein A12

HGF: Hepatocyte Growth Factor or lung fibroblast-derived mitogen

IL10RB: Interleukin 10 receptor subunit beta

KEGG: Kyoto Encyclopedia of Genes and Genomes

MCP-3: Monocyte chemoattractant protein 3 or CCL7

MCP-4: Monocyte chemotactic protein 4 or CCL13

MMP-1: Matrix metalloproteinase 1

OPG: Osteoprotegerin or Tumor necrosis factor receptor superfamily, member 11b

SARS-CoV-2: Severe acute respiratory syndrome coronavirus 2

SLAF1: Signaling lymphocytic activation molecule family member 1

ST1A1: Sulfotransferase family 1A member 1

TMPRSS2: Transmembrane serine protease 2

TNF: Tumor Necrosis Factor

TNFRSF9: TNF receptor superfamily member 9

TNFSF14: TNF superfamily member 14

TRANCE: TNF superfamily member 11 or Receptor activator of Nuclear Factor Kappa B Ligand

VEGFA: Vascular Endothelial Growth Factor A

Introduction

During the COVID-19 pandemic, populations at risk of severe symptoms have been detected including patients with asthma and COPD [1]. An analysis of comorbidities in 1,590 COVID-19 patients across China found that COPD patients had a higher risk for intensive care unit (ICU) admission, mechanical ventilation, or death, even after adjustment for age and smoking [2]. A recent meta-analysis has reported that COPD is associated with a significant, over fivefold, risk of severe COVID-19 [3]. The risk has been attributed to the overexpression of angiotensin converting enzyme 2 (ACE-2) receptor in bronchial epithelial cells from COPD patients [4] and by the increased expression of the transmembrane protease serine 2 (TMPRSS2) induced by the exposure to cigarette smoking [5]. A recent study also shows that patients with chronic lung disease (including COPD) have baseline changes in cell-type specific expression of genes related to viral replication and the immune response, that could promote immune exhaustion and altered inflammatory gene expression [6], supporting the increased risk in COPD patients. However, the mechanisms remain to be elucidated. On the other hand, it has been found that patients with asthma have increased risk of severe COVID-19 [7]. Also, that severe asthma is associated with COVID-19 related death [8] and asthmatic patients show increased expression of the viral activator TMPRSS2 [9]. Although there is still controversy on whether asthmatics are more susceptible to SARS-CoV-2 infection [10], it is being recognized that endotype, exposome or the presence of other comorbidities may increase risk to severe COVID-19 [11, 12].

As part of our research to identify biological markers for asthma and COPD, we conformed in 2018 the “Identification of Biomarkers in Asthma and COPD cohort (IBACO)” in two pneumology centres in Colombia and collected plasma for biomarker discovery aiming to identify biomarkers that can reveal mechanistical pathways in these diseases, especially to define endotypes of asthma and COPD. Plasma profiling is a useful tool that can reflect systemic inflammatory status including lung tissues [13-16]. We here implemented the multiplexed measurement of 92 plasma proteins based on the proximity ligation assay to provide a comprehensive overview of protein levels in the same sample at the same time [17, 18].

Likewise, there is a growing interest in identifying protein biomarkers of severe COVID-19 that may allow to profile high risk patients for early management and to define point-of-care clinical classifiers [19-21]. Several cohorts worldwide have reported significant changes in protein biomarkers in patients with COVID-19. Initial studies reported molecules that are indicative of inflammation (such as C reactive protein) or changes in cell proportions (neutrophil-to-lymphocyte ratio, NLR) [22, 23], but more recent studies are focused on elucidating pathways underlying patient severity with detailed profiles of plasma molecules such as cytokines, chemokines and growth factors [21, 24-26]. For instance, Messner *et al.*, identified 27 proteins in the blood of COVID-19 patients that were present at different levels depending on the severity of their symptoms including complement factors, the coagulation system, inflammation modulators, and pro-inflammatory factors upstream and downstream interleukin 6 [27]. In addition, Arunachalam *et al.*, identified a linear increase in the protein levels of MCP-3, TNF, EN-RAGE and TNFSF14, being highest in patients with severe disease and ICU admission [24]. During the analyses of the plasma profiling in the participants of the IBACO cohort, we found that COPD patients show increased levels of several immune proteins that have been reported as upregulated in patients with severe COVID-19 infection. Here we present these proteins and apply induced network analysis to evaluate their functional relationships, trying to understand how their dysregulation influences the susceptibility to severe COVID-19.

Materials and Methods

Study participants

The plasma samples were obtained from the “Identification of Biomarkers in Asthma and COPD cohort (IBACO)”, aimed to identify biomarkers of chronic respiratory diseases in Colombia. Patients were recruited from two reference pneumology clinics of Cartagena and Bogotá. The study was approved by the ethical committees of the University of Cartagena (nr. 4169722017) and the “Fundación Neumológica Colombiana” (nr. 232-07122017) and written informed consent was obtained from all participants. The study included a well characterized group of adult subjects aged 40 to 90 years with asthma (n=118) or COPD (n=99) recruited between February 2018 and March 2020, before the first case of SARS-Cov2 infection was reported in the country. Healthy controls (n=99) were recruited during the same period in elderly homes and in the communities with a similar age and gender distribution. At the time of sampling all subjects were queried about their current and past sociodemographic characteristics, symptoms, comorbidities, smoking habits, environmental exposures, history of allergies, pharmacological treatments, and received a physical examination and pulmonary function tests. The diagnosis was done by a pulmonologist according to the GEMA guidelines for asthma [28] and to the GesEPOC guidelines for COPD [29]. Pulmonary function test was done by spirometry pre- and post-bronchodilator according to the American Thoracic Society (ATS) guidelines. Quality of life was assessed by the asthma control questionnaire (ACQ-5), the COPD Assessment Test (CAT), and the Saint George's Respiratory Questionnaire (SGRQ). Comorbidities were evaluated by the Charlson comorbidity index [30]. Inclusion criteria were no exacerbation in the last eight weeks, age 40 or more, with a clinical diagnosis of asthma or COPD confirmed by a pneumologist and signed informed consent. For COPD patients additional inclusion criteria were a reported exposure to wood smoke for at least 10 years and/or cigarette smoking with more than 10 packs/year. Exclusion criteria included exacerbation of asthma or COPD in the last 8 weeks, presence of uncontrolled comorbidities such as hypertension, coronary disease, hepatic and/or renal diseases, active neoplastic disease, treatment with immunosuppressive drugs, human immunodeficiency virus (HIV) infection, report of respiratory or non-respiratory infection in the last 8 weeks and/or being under treatment with monoclonal antibodies.

Sample collection

Blood samples were collected by standard phlebotomy in heparinized tubes and plasma was separated by centrifuging at 1000 g at 4°C for 15 minutes and stored at -80°C until analysis. Another sample was collected in an EDTA tube to measure leukocyte cell counts by type IV hemocytometry. IgE antibodies were measured by ImmunoCAP following manufacturer instructions (Thermo Fisher, Uppsala, Sweden).

Quantification of plasma proteins

For plasma profiling the samples were randomly distributed in 96-well plates and protein levels were measured by the Proximity Extension Assay (PEA) [18] using the Target 96 Inflammation Panel (Olink Proteomics, Analysis Service Facility, Boston, USA) which includes a broad selection of proteins established as inflammatory signatures in diverse inflammatory diseases. A total of 67 out of 92 plasma molecules were detected in heparinized plasma (73%). Normalized Protein Levels were expressed as NPX units (\log_2 scale). Intraassay and interassay average coefficient of variations (%CV) were 6% and 11%, respectively. Nine samples were removed because they did not pass the

quality control (QC). Twenty-five proteins had values below the limit of detection (LOD) and were removed from analysis.

Statistical Analysis

Differences between protein levels among the study groups (asthma, COPD and healthy controls) were first screened by the F-test (ANOVA) using the Olink Insights Stat Analysis Web tool (<https://olinkproteomics.shinyapps.io/OlinkInsightsStatAnalysis/>) and by the non-parametric Kruskal Wallis test. Given that some of the proteins with significant differences between groups did not have a normal distribution (Kolmogorov-Smirnov test), we implemented both independent samples *t*-test and Mann-Witney tests for comparing protein levels between patients and controls. Correlation coefficients were calculated by the Pearson test. A $P \leq 0.05$ was considered significant. To adjust for multiple testing, the Benjamini–Hochberg false discovery rate (FDR) correction was applied using the `p.adjust` function. Statistical analyses were performed in R version 3.5.3 (<https://www.r-project.org/>).

Functional annotation

The list of proteins with differences between patients and healthy controls were analysed for pathways, ontologies, diseases/drugs in the Enrichr web tool (<https://maayanlab.cloud/Enrichr/>) [31]. Protein connections and pathways were analysed in the PathwAX web tool (<https://pathwax.sbc.su.se/help.html>) [32]. The induced network analysis was constructed in Consensus PathDB (<http://cpdb.molgen.mpg.de/>) using an intermediate nodes z-score threshold of 30 and including binary protein-protein interactions of high confidence and biochemical reactions [33].

Biomarkers of severe COVID-19

We performed a literature search on all proteins described associated with COVID-19 severity, (defined as ICU admission, SpO₂ saturation <90%, need of mechanical ventilation, or death). These markers were listed and compared with the list of significant molecules detected in this study. The search engine Geneshot (<https://amp.pharm.mssm.edu/geneshot/>) was used to systematically retrieve known markers associated with SARS infection and to calculate the probability of detecting overlap due to chance with the protein list resulting from this study.

Results

This cohort is representative of adult patients from an urban setting in a middle-income country. Demographic and clinical characteristics are presented in **Table 1**. Regarding cell counts, we found significant differences in the number of eosinophils, neutrophils, and monocytes among groups while there were no differences in the number of lymphocytes. A total of 315 plasma samples were analysed with the Olink Inflammation panel to compare proteins levels between groups (**Figure 1A**).

Table 1. Demographic and clinical characteristics of study subjects

Variables	Healthy controls (n=98)	Asthma patients (n=118)	COPD patients (n=99)	Pvalue
Age, yr	56 ± 13	60 ± 11	72 ± 8	<0.0001
Female gender, n (%)	63 (64.3%)	82 (69.5%)	40 (40.4%)	<0.0001
BMI, kg/m ²	24.9 ± 4.5	27.5 ± 4.9	25.1 ± 4.5	<0.0001
Tabaquism ever, yes, n (%)	22 (22.4%)	40 (33.9%)	91 (91.9%)	<0.0001
Pack/year, n	1.1 ± 4.0	1.72 ± 5.6	32.1 ± 26.7	<0.0001
Passive smoking, yes, n (%)	33 (33.7%)	56 (47.5%)	51 (51.5%)	0.03
Exposure to wood smoke, yes, n (%)	17 (17.3%)	26 (22%)	32 (32.3%)	0.04
Age of wheezing onset, n (%)				-
<5	n/a	7 (5.9%)	0 (0%)	
5-14	n/a	33 (28.0%)	1 (53.5%)	
15-40	n/a	38 (32.2)	8 (52.5%)	
>40	n/a	32 (27.1%)	44 (44.4%)	
ER visits in the last year due to exacerbation of respiratory symptoms	0	1.2 ± 3	0.6 ± 1.1	<0.0001
mMRC	0.2 ± 0.5	1.1 ± 0.9	1.6 ± 1.0	<0.0001
ACQ-5	n/a	4.54 ± 4.4	n/a	-
CAT	n/a	n/a	13.8 ± 7.3	-
Pre-FEV ₁ %	96.3 ± 18.4	71.1 ± 20.5	55.3 ± 20.1	<0.0001
Post BD FEV ₁ %	98 ± 18.1	77.2 ± 21.9	59 ± 21.1	<0.0001
Pre FEV ₁ /FVC, %	80 ± 6	69 ± 12	60 ± 13	<0.0001
Post BD FEV ₁ /FVC, %	82 ± 6	71 ± 12	60 ± 13	<0.0001
Blood eosinophils, cells/μl	140 (90-192)	220 (120-312)	190 (130-310)	<0.0001
Blood neutrophils, cells/μl	3090 (2517-3862)	3815 (3122-4940)	4170 (3430-5310)	<0.0001
Blood monocytes, cells/μl	435 (357-525)	500 (390-602)	540 (450-680)	<0.0001
Blood lymphocytes, cells/ μl	2185 (1720-2600)	2145 (1670-2642)	1950 (1590-2440)	0.13
Total, IgE, kU/l	57.7 (21-189.7)	134.3 (44.4-370)	71.9 (23.6-175.4)	< 0.0001
IgE to <i>D. pteronyssinus</i>	0.04 (0.03-0.21)	0.24 (0.04-6.54)	0.05(0.03-0.24)	< 0.0001
IgE to <i>B. tropicalis</i>	0.02 (0.00-0.11)	0.21 (0.01-2.39)	0.02 (0.00-0.35)	< 0.0001
IgE to <i>A. lumbricoides</i>	0.02 (0.00-0.07)	0.05 (0.01-0.36)	0.03 (0.00-0.15)	< 0.0001
Inhaled corticosteroid dose				-
High	0 (0%)	34 (28.8%)	2 (2%)	
Medium	0 (0%)	35 (29.7%)	19 (19.2%)	
Low	0 (0%)	42 (35.6)	5 (5.1%)	
None	0 (0%)	5 (4.2%)	68 (68.7%)	
Charlson comorbidity index	0.05±0.26	1.2 ± 0.6	1.3 ± 0.7	<0.0001
Cardiovascular disease, yes, n (%)	0 (0%)	5 (4.2%)	11 (11.1%)	-
Diabetes, yes, n (%)	1 (1%)	8 (6.8%)	11 (11.1%)	-

BMI: Body Mass Index, ER: emergency room, mMRC: modified Medical Research Council dyspnea scale; ACQ-5: asthma control questionnaire; CAT: COPD Assessment Test, FEV₁: forced expiratory volume in 1 second; FVC: forced vital capacity.

Patients with asthma and COPD have increased levels of several plasma inflammatory proteins.

We found differences in 41 plasma proteins between patients and healthy controls (Kruskal Wallis test, nominal $P < 0.05$). Similar results were obtained by the analysis of variance (ANOVA) and 36 proteins remained significant after Benjamini–Hochberg false discovery rate (FDR) correction (**Figure 1B**). The top significant proteins are presented in **Figure 1C**.

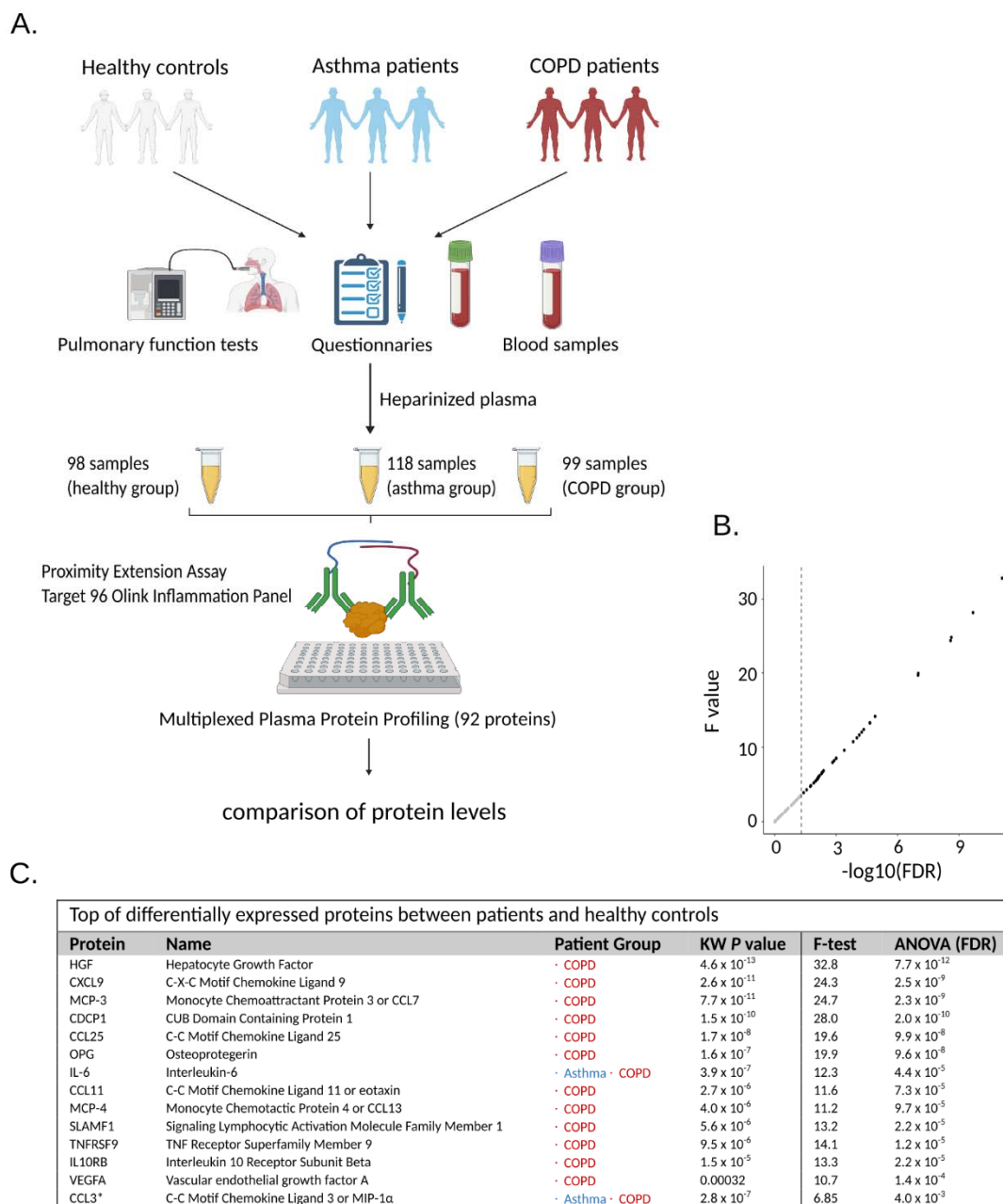


Figure 1. A) Schematic representation of study groups and samples included in the proteomic screening. B) Dot plot on the F value versus the False Discovery Rate (FDR) for all measured proteins. Dotted lines represent $P = 0.05$. C) Top differentially expressed proteins by comparing asthma and COPD patients with healthy controls. Detailed information on protein names and P values is presented in Supplementary table 1.

We then compared protein levels between disease groups and healthy controls by using the Mann-Witney test and independent samples t -test. The levels of 8 proteins showed significant differences in asthmatic patients (IL-6, CXCL1, MMP-1, CSF-1, CXCL5, CCL3, CCL23 and TNFSF14) (**Figure 2**), while 40 proteins showed significant differences in COPD patients (**Figure 2**). Four proteins (CSF-1, CCL3, CCL23 and IL-6) were increased in both patient's groups, however, the number of proteins and the magnitude of the differences were higher in COPD patients than in asthma patients (**Figure 2**).



Figure 2. Volcano plots of differentially expressed plasma proteins between patients and healthy controls. Lines indicate cut-off points for significance ($P < 0.05$ and fold change ≥ 0.2).

Differentially expressed proteins are grouped in different clusters.

We also performed correlation analysis to evaluate the relationships between proteins levels and identify co-regulated signatures in 30 proteins with significant differences in the COPD patients (FDR < 0.05 and fold change > 0.20). We found two correlation clusters: the first within seven proteins (OPG, HGF, CXC3L1, VEGFA, IL10RB, TNFRSF9, PD-L1) exhibiting high to moderate correlation. The strongest coefficients were observed between TNFRSF9 and VEGFA ($r = 0.73$, $P =$

1.1×10^{-17}), TNFRSF9 and IL10RB ($r = 0.73$, $P = 9.9 \times 10^{-18}$) and HGF and OPG ($r = 0.72$, $P = 8.6 \times 10^{-17}$).

The second cluster involved eight chemokines with moderate correlation in their protein levels (CCL11, MCP-1, MCP-3, CXCL11, MCP-4, IL-8, CXCL9 and CXCL10). The most significant were CXCL11 and MCP-4 ($r = 0.67$, $P = 1.9 \times 10^{-14}$), CXCL9 and CXCL10 ($r = 0.65$, $P = 5.1 \times 10^{-13}$), MCP-3 and MCP-4 ($r = 0.58$, $P = 2.1 \times 10^{-10}$) and CXCL11 and CXCL10 ($r = 0.57$, $P = 5.3 \times 10^{-10}$). These analyses also showed that CXCL9 levels correlate with proteins in the first cluster and TRANCE (RANKL) had an inverse correlation with its ligand OPG ($r = -0.27$, $P = 5.5 \times 10^{-3}$) (Figure 3).

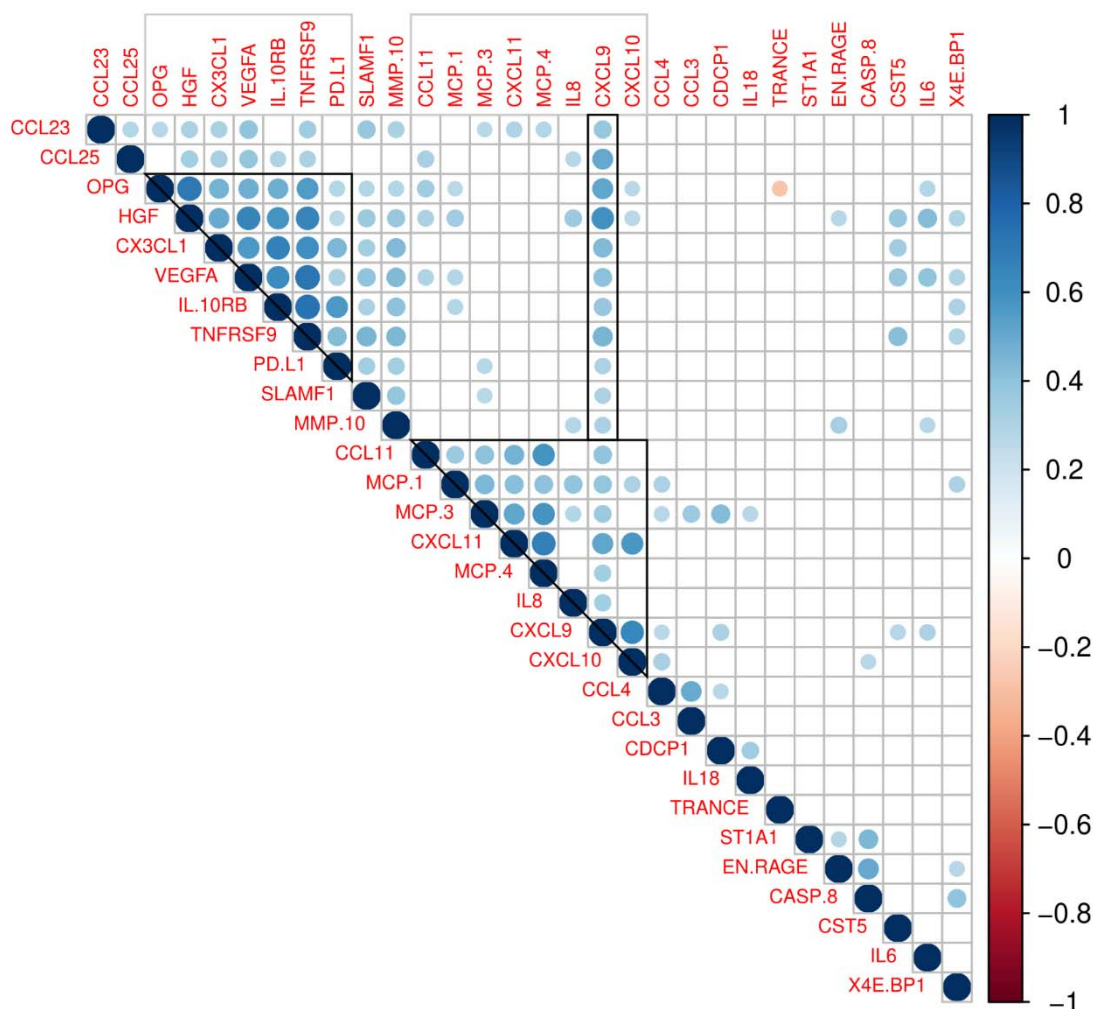


Figure 3. Correlations between plasma levels in 30 plasma proteins showing significant differences between COPD patients and controls with FDR < 0.05 and fold change > 0.20. Coloured circles indicate a significant correlation ($P < 0.05$). The colour scale represents the Pearson correlation coefficient (1 positive correlation: -1 negative correlation). Grey squares indicate clusters of correlated proteins.

Differentially expressed proteins are involved in recognized inflammatory pathways.

To further evaluate the biological relationships between the correlated protein clusters we performed enrichment analyses on pathways and gene ontology terms. Differentially expressed proteins were enriched in the Gene Ontology (GO) categories of cytokine and chemokine signaling pathways (**Figure 4A**). The analysis on PathwAX showed the top significant enrichment in the pathways of “Viral protein interaction with cytokine and cytokine receptor”, “TNF signaling pathway” and the “NF-kappa B signaling pathway” (**Figure 4B**). The proteins that overlap with these biological processes involve several chemokines.

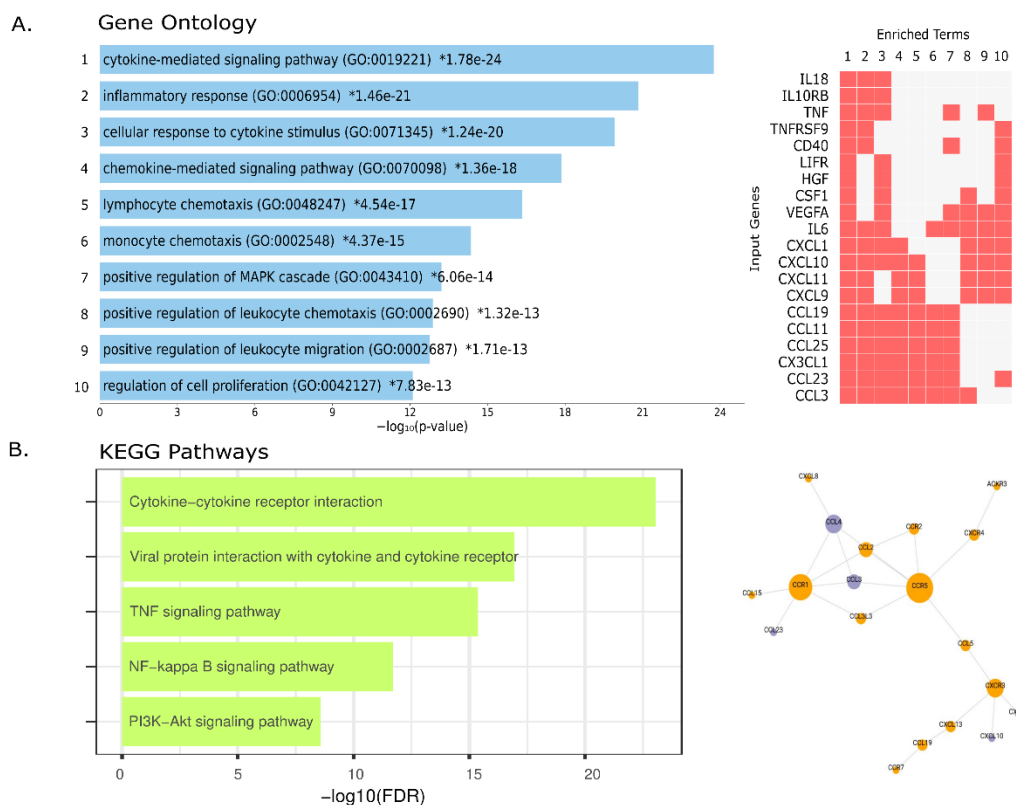


Figure 4. Functional annotation of the differentially expressed plasma proteins. A). Gene Ontology analysis: each bar represents a significant GO term with its *P* value in the enrichment analysis. Asterisks indicate significant after correction for multiple testing. The proteins detected in this study that coincide with those involved in each biological process (1 to 10) are indicated by a red box (right panel). B). Significant pathways on the Kyoto Encyclopedia of Genes and Genomes (KEGG). The crosstalk of the differentially expressed chemokines with other members is presented on the right.

In addition, we explored the biological connections among differentially expressed proteins using them as seeds in an induced network analysis considering evidence of binary protein-protein interactions at high level of confidence and biochemical reactions. We found several interactions between the cluster of HGF, OPG, TRANCE and VEGFA with the cluster of chemokines. First, the strong correlation of HGF with OPG could be explained with their interaction mediated by the von Willebrand factor (VWF). Upon that OPG interacts with its ligand TRANCE, metalloproteinases (MMP) and the chemokine MCP-3. Besides, an interaction mediated by heparan sulphate (HS) links HGF with IL-8 and VEGFA. The interaction of HGF with the chemokine cluster is also mediated by Platelet Factor 4 (PF4). HGF also interacts with TNF involving neuropilin 1 (NRP1) (**Figure 5**).

We also observed an interaction between TNF and CXCL9 that has TMPRSS2 as an intermediate node. From there, CXCL9 and CXCL10 seem to be immune checkpoints connected with several other chemokines. IL-6 and IL-8 are interconnected between them and with the chemokine cluster by members of the NFκB signaling pathway (**Figure 5**).

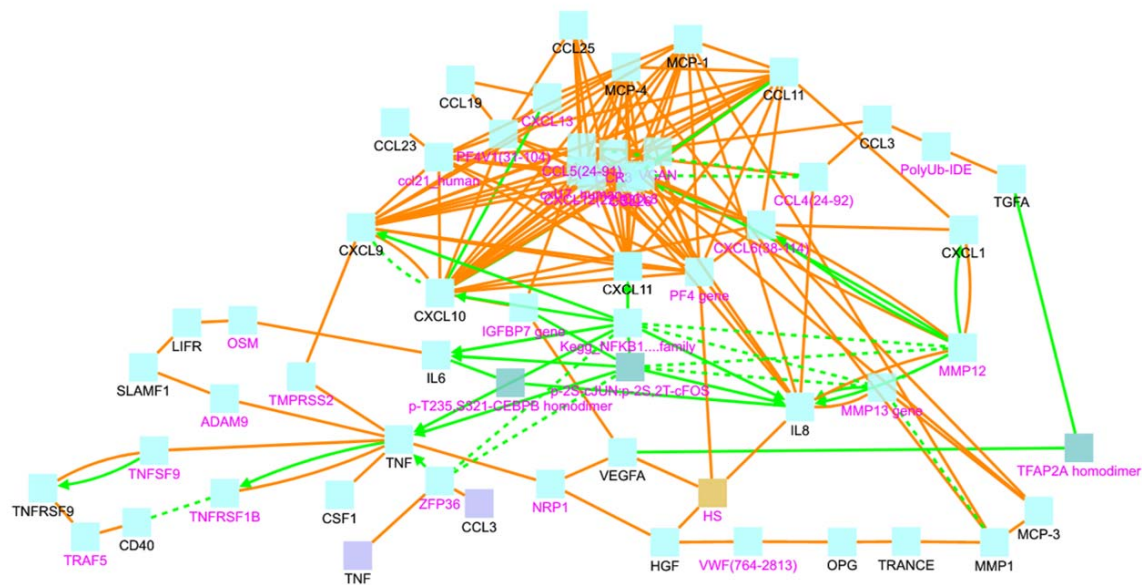


Figure 5. Induced network analysis showing the protein-protein interactions (orange line) and biochemical reactions (green lines) among the differentially expressed proteins (black letters) or mediated by interconnecting nodes (magenta letters). VWF: von Willebrand Factor. HS: heparan sulphate.

Asthma, COPD and severe COVID-19 patients shared increased plasma inflammatory proteins.

The differentially expressed proteins were not only involved in biological pathways of viral immune response (**Figure 4**) but were also found enriched in datasets of genes upregulated by SARS coronaviruses. The COVID-19 Drug and Gene Set Library retrieved at least 10 experiments with significant enrichment of the genes encoding the altered proteins detected in this study upon infection. The top significant association was with nine genes upregulated by SARS-CoV-2 in Calu3 cells including CXCL9, TNFRSF9, CX3CL1, CSF1, LIFR, IL6, CXCL11, CXCL10 and TNF (**Figure 6**).

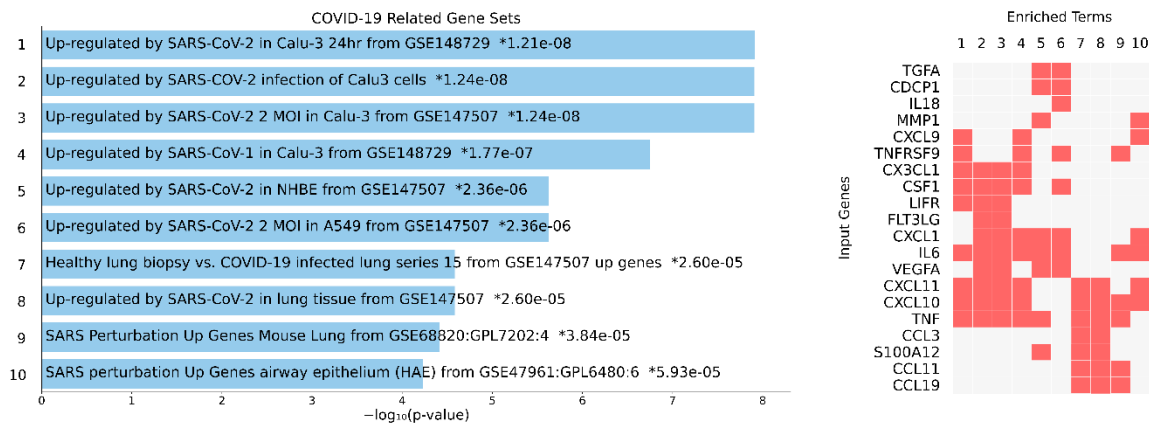


Figure 6. Overlap between genes upregulated upon coronavirus infection with the proteins detected in this study. The details on the experiment are indicated on the blue bars (left) with the *P* value for the enrichment analysis. Asterisks indicate significant enrichment after correction for multiple testing. The proteins detected in this study that coincide with the genes found in each experiment (1 to 10) are indicated by a red box (right panel).

A comparison with 133 SARS Literature-Associated Genes in Geneshot GeneRIF revealed significant overlap with four proteins found increased in our patients (CXCL10, CXCL9, IL-6, TNF, $P = 6.9 \times 10^{-11}$). We then analysed which of the differentially expressed proteins detected in this study have been previously reported associated with the severity of SARS-Cov-2 infection in humans. Strikingly, we found that the top significant protein HGF have been reported increased in critically ill COVID-19 patients [25, 34]. Also, other proteins such as IL-6, MCP-3, CXCL10, TNF, and EN-RAGE have been found increased in patients with severe COVID-19 [24]. The protein levels of eight severe COVID-19 biomarkers (HGF, CXCL9, IL-8, IL-6, MCP-3, VEGFA, CXCL10, CCL3) as detected in healthy controls, asthmatics and COPD patients from this study are presented in **Figure 7**.

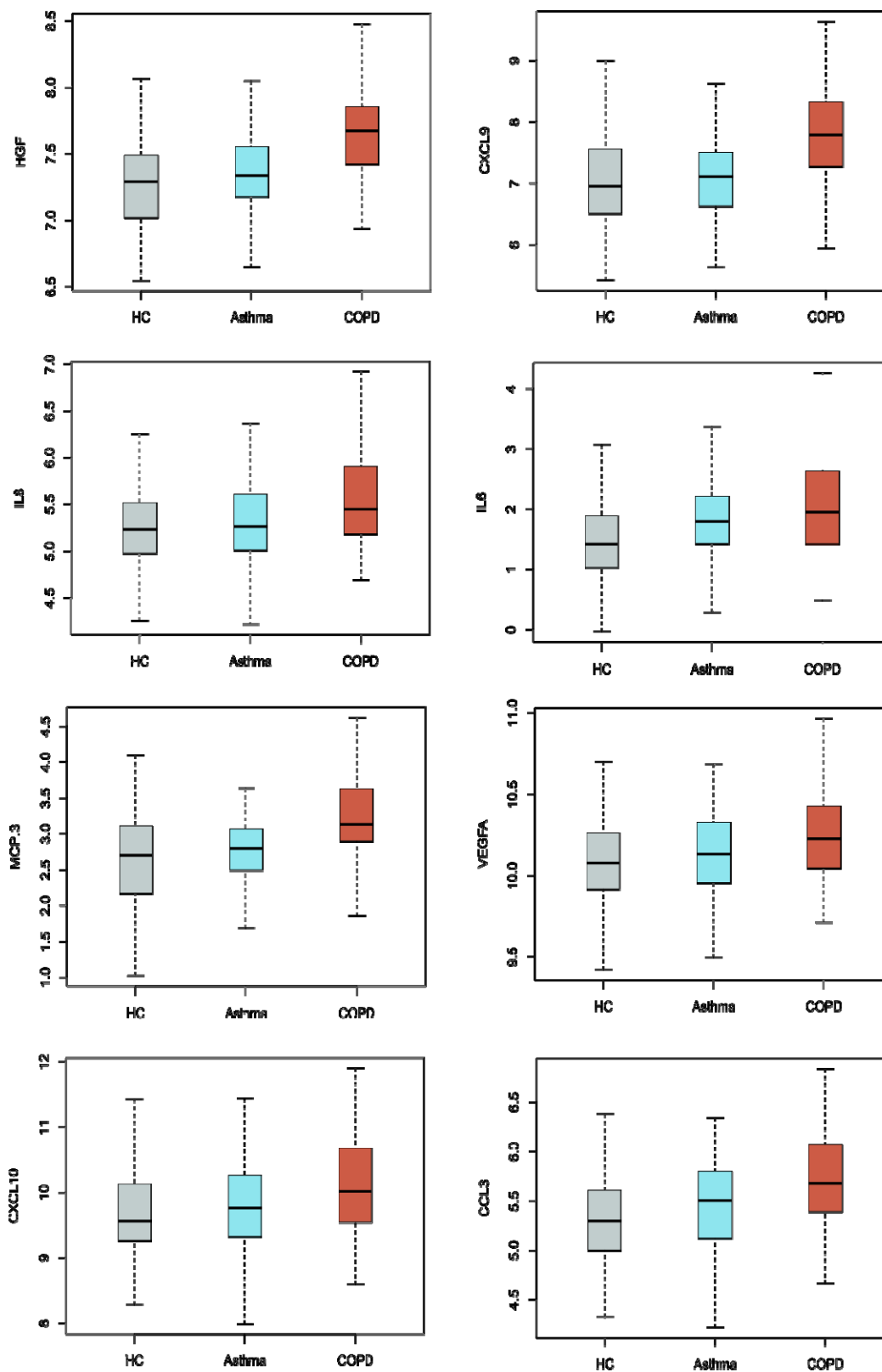


Figure 7. Boxplots with the normalized protein levels (log₂ scale) of eight proteins associated with severe COVID-19 in non-infected healthy controls (HC), asthma and COPD patients.

Several plasma proteins associated with severe COVID-19 are influenced by age.

Plasma levels in 18 proteins showed significant correlations with age. The highest coefficients were detected with OPG ($r=0.59$, $P = 9.3 \times 10^{-11}$), HGF ($r=0.48$, $P = 3.2 \times 10^{-7}$) and CXCL9 ($r=0.43$, $P = 7.6 \times 10^{-6}$). Of these age-correlated proteins, six had been also associated with COVID-19 severity: HGF and CXCL9 shown the highest coefficients while IL10RB, VEGFA, IL-6 and TNF showed low albeit significant correlation ($r < 0.30$). Besides, MCP-3, EN-RAGE and IL-8 did not show relation with age. The dynamics of nine biomarkers of severe COVID-19 are presented in **Figure 8**.

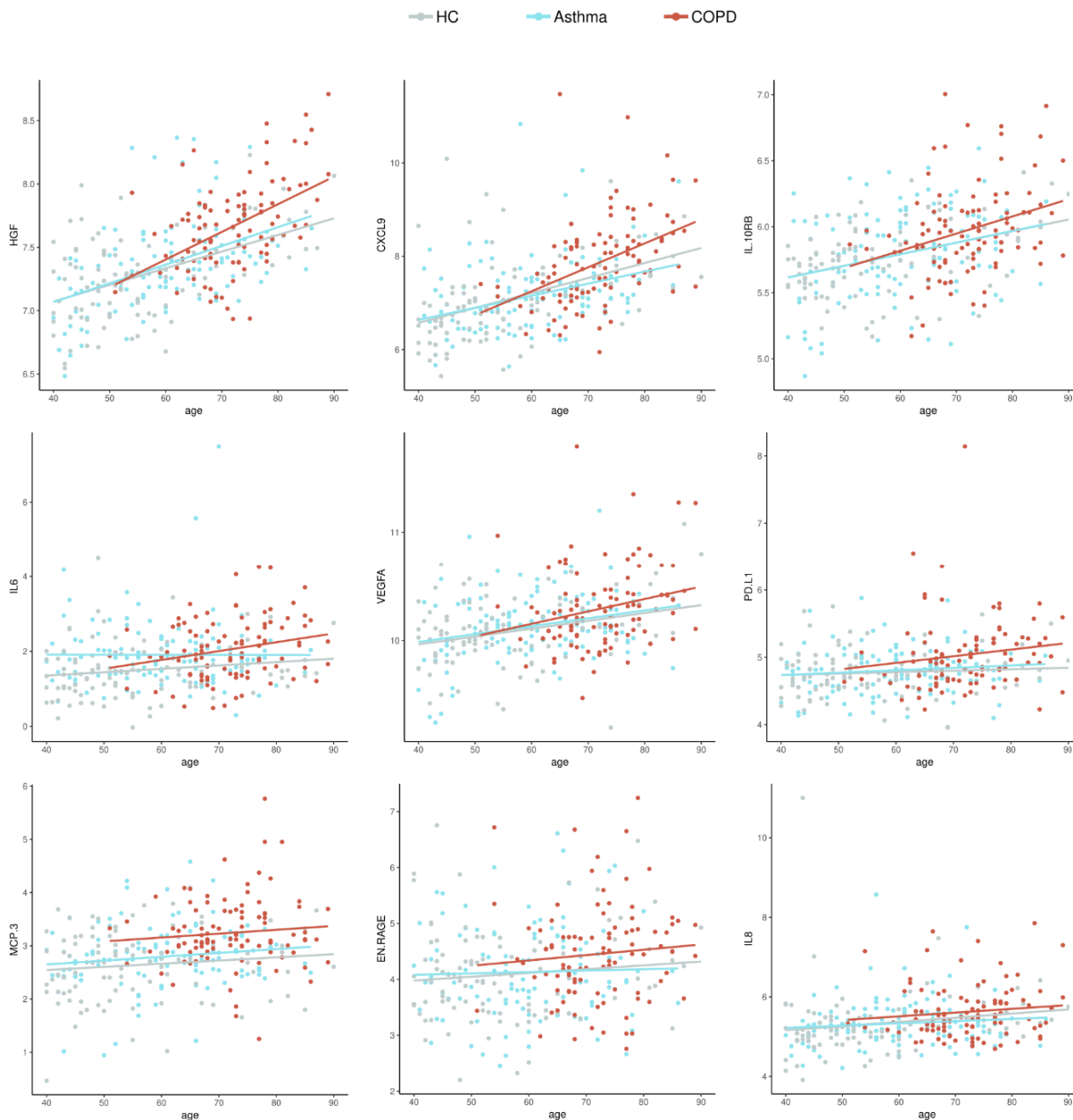


Figure 8. Dot plots with the normalized protein levels (log₂ scale) in relation to age, each dot represent a subject. Lines represent the regression.

Discussion

The pathophysiology of asthma and COPD is under evolving research to better understand the mechanisms underlying these diseases. We found differences in plasma protein levels that have not been previously reported, namely increased levels of CSF1, CCL23, CDCP1, CCL25, MCP4, CCL11, SLAF1, CST5 and STST1A1 in COPD patients. Also, we reported for the first-time decreased levels of CXCL1 and CXCL1, and increased levels of CCL3 in asthmatic patients. These proteins could be candidates for biomarkers of these diseases. We also confirmed the increase of several plasma proteins previously described in asthma and COPD. To explore the plasma protein profiles we employed a multiplex assay based on the proximity extension assay (Olink) that is sensitive, specific, and one of the most extensive panel available for proteins associated with inflammatory diseases and related biological processes, enabling investigation of protein signatures with high efficiency and robustness.

Among the proteins increased in COPD patients, HGF, CXCL9, MCP-3, IL-6, IL-8, CXL10, EN-RAGE, IL10RB, VEGFA, CCL3 and TNF have been also found upregulated in patients with severe COVID-19 [24, 26] and some of them such as HGF postulated as biomarkers for the severe form of this infection [21, 34, 35]. The overlap between these biomarkers of COVID-19 severity and the proteins we found increased in plasma from COPD patients add important information regarding the susceptibility of these patients to severe COVID-19. Albeit asthma patients also showed differences in plasma proteins compared to healthy controls, only two (IL-6 and CCL3) were shared with severe COVID-19, a markedly lower number compared to those with COPD. These results suggest that a more “systemic” inflammation in COPD patients contribute to their increased risk for severe COVID-19.

HGF was the top significant protein marker in our study. Deng *et al.*, reported that HGF levels above 1,128 pg/ml can discriminate severe from non-severe COVID-19 patients, with an 84.6% sensitivity and 97.9% specificity to classify severe patients (AUC of 90.5%). Also, they report that HGF might significantly increase only when inflammation mounts toward an uncontrolled storm [34]. However, our results demonstrate that patients with COPD have a significant elevation of this marker before getting infected with SARS-CoV-2; therefore, further studies are needed to elucidate the dynamic and importance of HGF in COPD and COVID-19 patients.

Additionally, plasma levels of HGF, osteoprotegerin (OPG) and TRANCE were correlated and change in aged healthy groups. Given the relationship of OPG and TRANCE with osteoclastogenesis [36, 37], our data may reflect protein changes due to aging, but also indicate that the HGF-OPG-TRANCE axis is altered at earlier age-points in COPD patients (**Figure 9**). The relevance of this finding on the increased susceptibility of aged individuals to severe COVID-19 needs to be further defined.

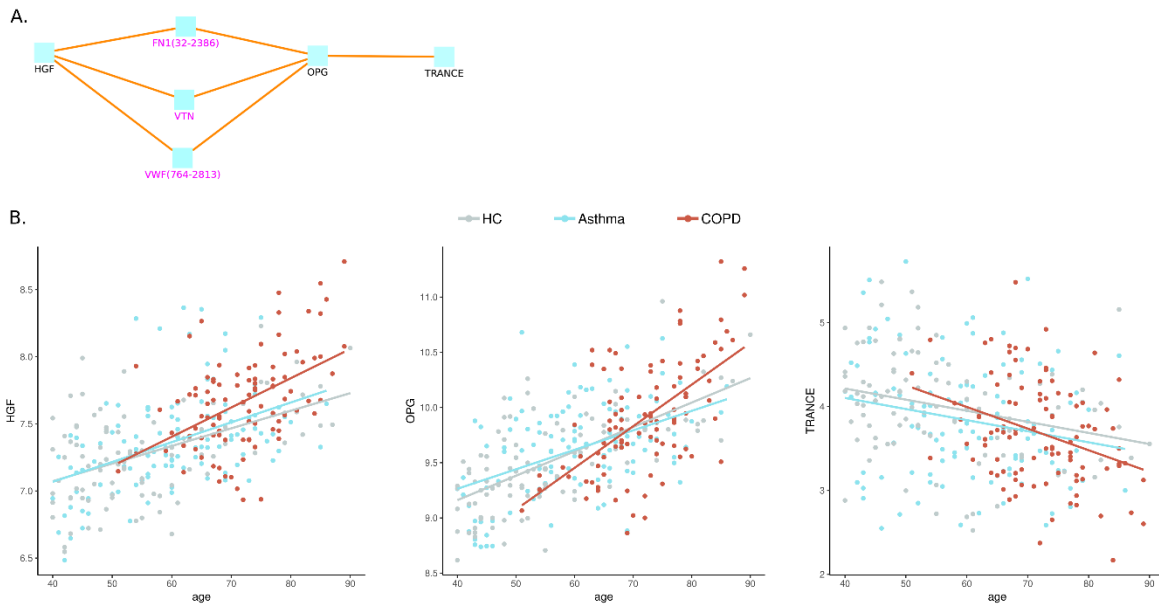


Figure 9. The HGF, OPG and TRANCE axis in patients and controls. A) Schema on the protein-protein interactions between HGF and OPG mediated by fibronectin (FN1), vitronectin (VTN) and the von-Willebrand factor (VWF). B) Dot plots with the normalized protein levels (\log_2 scale) in relation to age, each dot represent a subject. Lines represent the regression.

Other studies have linked HGF with a neutrophil signature that predicts critically ill COVID-19 patients [38]. In that study, HGF levels directly correlate with absolute neutrophil counts ($\rho=0.55$, $P < 0.001$) and together with resistin and lipocalin-2 are released from neutrophil granules upon activation. Indeed, HGF and three other neutrophil granule proteins (RETN, LCN2, MMP-8) were not elevated in non-ICU patients compared to controls and were only significantly different in patients who would go on to develop critical illness [38]. The COPD patients in this study have increased levels of HGF and higher numbers of neutrophils compared to asthmatics and healthy controls, however we did not find correlation between HGF and neutrophil counts in COPD patients (data not shown).

Our induced network analysis revealed protein-protein interactions between HGF and OPG mediated by the von Willebrand factor (VWF) suggesting a connection of these markers with the coagulation system (Figure 5). In the study of Thwaites *et al.*, the von-Willebrand factor A2 was elevated in all hospitalized COVID-19 patients and the elevation was highest in severely affected COVID-19 patients [39]. Other studies also support the elevation of VWF as risk factor for severe COVID-19 [40]. In this setting, our data support that HGF and OPG could be involved in severe COVID-19 by affecting pathways implicated in coagulopathy and thrombosis [41-43]. Since HGF have been reported increased in patients with rheumatic diseases [44] as well as in patients with insulin resistance-diabetes [45], obesity [46], and diabetic kidney disease [47], further studies are needed to establish if it is elevated in severe COVID-19 as a pre-existing condition reflecting the presence of the comorbidity, or if increases during the infection and has a role in the pathophysiology this condition.

Other cytokines such as IL-6 and TNF- α have been documented in severe COVID-19 [48]. Indeed, high serum IL-6, IL-8 and TNF- α levels at the time of hospitalization were strong and independent

predictors of patient survival [20]. Here we found increased levels of IL-6, IL-8 and TNF in COPD patients. The analysis of protein-protein interactions between the differentially expressed proteins detected in this study, revealed an interaction between TNF and CXCL9 that has the viral activator TMPRSS2 as intermediate node (**Figure 5**). This transmembrane serine protease has been found increased in smokers and in COPD patients [5, 49], and mediates the cleavage of the S protein in SARS-CoV-2, thus is instrumental for viral entry [50]. CXCL9 was the protein showing the second most significant differences between COPD patients and healthy controls (**Figure 1 and 2**). The consequences of these protein interactions need to be experimentally elucidated, however our results suggest that altered levels of TNF, IL-6 and CXCL9 in COPD patients may be involved in the initial steps that predispose COPD patients to severe COVID-19. CXCL9 is a C-X-C motif chemokine induced by interferon, considered a marker of monocyte/macrophage activation that is implicated in lymphocyte infiltration, Th1 polarization and antiviral immune responses [51]. Several studies have reported increased expression of CXCL9 in severe COVID-19 patients [52-55], as well as in CXCL10 and CXCL11 [24, 56], three co-expressed chemokines that were found increased in the COPD patients in our study (**Figure 2 and 7**).

Another interesting finding was the enrichment of increased proteins in COPD patients in chemokine and cytokine networks associated to viral response (**Figure 4**). Respiratory viral infections can trigger acute exacerbations in COPD patients. Different viruses are implicated, for example rhinovirus, influenza, syncytial respiratory virus and coronavirus [57]; being rhinovirus and coronavirus detected in 35.7% and 25.9% of all viral infections occurring during acute exacerbations [58]. Typically, COPD patients are more susceptible to viral infections. The mechanisms underlying this susceptibility included dysregulated antiviral function of CD8⁺ T cells via the PD-1/PD-L1 axis [59] and an altered production of interferons and chemokines [60]. Thus, it is possible that differences in protein plasma levels and the enrichment of differentially expressed proteins in viral related pathways (**Figure 4**), could be the consequence of previous viral infections that induced lung inflammation and altered the plasma proteome profile in our COPD patients. However, since our COPD patients had not experienced exacerbations in at least eight weeks before sampling, these differences could reflect sub-clinical viral infections as has been described in patients with stable COPD [61, 62]. Changes in some of these proteins and especially in chemokines, might reflect an altered immune response that could explain their increased susceptibility to a broad spectrum of viral infections including SARS-CoV-2.

In conclusion, our results provide evidence of dysregulated inflammatory signatures in the plasma proteome of COPD that may underlie their increased susceptibility to severe COVID-19. Since these proteins were found increased in patients without SARS-CoV-2 infection, they could be further evaluated as biomarkers of increased risk to severe COVID-19. The detection of dysregulated plasma proteins in other conditions known to be highly susceptible to severe COVID-19 will provide important information for preventing and treating this viral disease. Moreover, the proteins detected in this study provide potential targets of new or repositioned therapeutic approaches aiming to avoid severe COVID-19 in patients with COPD.

Acknowledgments

We thank Mileidis Avila, Ana Carolina Mercado, Ivan Acevedo Monterrosa, Tania Cepeda and Patricia Parada for their technical support during patient recruitment and sample processing. To Dina Ortiz for her skilful assistance with the pulmonary function tests and to all the patients and healthy participants that voluntarily contributed to this study.

References

1. Li, X.; Xu, S.; Yu, M.; Wang, K.; Tao, Y.; Zhou, Y.; Shi, J.; Zhou, M.; Wu, B.; Yang, Z.; Zhang, C.; Yue, J.; Zhang, Z.; Renz, H.; Liu, X.; Xie, J.; Xie, M.; Zhao, J., Risk factors for severity and mortality in adult COVID-19 inpatients in Wuhan. *J Allergy Clin Immunol* **2020**, 146, (1), 110-118.
2. Wu, F.; Zhou, Y.; Wang, Z.; Xie, M.; Shi, Z.; Tang, Z.; Li, X.; Li, X.; Lei, C.; Li, Y.; Ni, Z.; Hu, Y.; Liu, X.; Yin, W.; Cheng, L.; Ye, F.; Peng, J.; Huang, L.; Tian, J.; Zhang, L.; Mo, X.; Zhang, Y.; Hu, K.; Jiang, Y.; Guan, W.; Xiang, J.; Liu, Y.; Peng, Y.; Wei, L.; Hu, Y.; Peng, P.; Wang, J.; Liu, J.; Huang, W.; Chen, R.; Zhao, J.; Li, S.; Zhang, N.; Zhao, J.; Zhong, N.; Ran, P.; Medical Treatment Expert Group for, C.; Covid, Clinical characteristics of COVID-19 infection in chronic obstructive pulmonary disease: a multicenter, retrospective, observational study. *J Thorac Dis* **2020**, 12, (5), 1811-1823.
3. Lippi, G.; Henry, B. M., Chronic obstructive pulmonary disease is associated with severe coronavirus disease 2019 (COVID-19). *Respir Med* **2020**, 167, 105941.
4. Leung, J. M.; Yang, C. X.; Tam, A.; Shaipanich, T.; Hackett, T. L.; Singhera, G. K.; Dorscheid, D. R.; Sin, D. D., ACE-2 expression in the small airway epithelia of smokers and COPD patients: implications for COVID-19. *Eur Respir J* **2020**, 55, (5).
5. Saheb Sharif-Askari, N.; Saheb Sharif-Askari, F.; Alabed, M.; Temsah, M. H.; Al Heialy, S.; Hamid, Q.; Halwani, R., Airways Expression of SARS-CoV-2 Receptor, ACE2, and TMPRSS2 Is Lower in Children Than Adults and Increases with Smoking and COPD. *Mol Ther Methods Clin Dev* **2020**, 18, 1-6.
6. Bui, L. T.; Winters, N. I.; Chung, M. I.; Joseph, C.; Gutierrez, A. J.; Habermann, A. C.; Adams, T. S.; Schupp, J. C.; Poli, S.; Peter, L. M.; Taylor, C. J.; Blackburn, J. B.; Richmond, B. W.; Nicholson, A. G.; Rassel, D.; Wallace, W. A.; Rosas, I. O.; Jenkins, R. G.; Kaminski, N.; Kropski, J. A.; Banovich, N. E., Single-cell RNA-sequencing reveals dysregulation of molecular programs associated with SARS-CoV-2 severity and outcomes in patients with chronic lung disease. *bioRxiv* **2020**.
7. Butler, M. W.; O'Reilly, A.; Dunican, E. M.; Mallon, P.; Feeney, E. R.; Keane, M. P.; McCarthy, C., Prevalence of comorbid asthma in COVID-19 patients. *J Allergy Clin Immunol* **2020**, 146, (2), 334-335.
8. Williamson, E. J.; Walker, A. J.; Bhaskaran, K.; Bacon, S.; Bates, C.; Morton, C. E.; Curtis, H. J.; Mehrkar, A.; Evans, D.; Inglesby, P.; Cockburn, J.; McDonald, H. I.; Mackenna, B.; Tomlinson, L.; Douglas, I. J.; Rentsch, C. T.; Mathur, R.; Wong, A. Y. S.; Grieve, R.; Harrison, D.; Forbes, H.; Schultze, A.; Croker, R.; Parry, J.; Hester, F.; Harper, S.; Perera, R.; Evans, S. J. W.; Smeeth, L.; Goldacre, B., Factors associated with COVID-19-related death using OpenSAFELY. *Nature* **2020**, 584, (7821), 430-436.
9. Radzikowska, U.; Ding, M.; Tan, G.; Zhakparov, D.; Peng, Y.; Wawrzyniak, P.; Wang, M.; Li, S.; Morita, H.; Altunbulakli, C.; Reiger, M.; Neumann, A. U.; Lunjani, N.; Traidl-Hoffmann, C.; Nadeau, K. C.; O'Mahony, L.; Akdis, C.; Sokolowska, M., Distribution of ACE2, CD147, CD26, and other SARS-CoV-2 associated molecules in tissues and immune cells in health and in asthma, COPD, obesity, hypertension, and COVID-19 risk factors. *Allergy* **2020**, 75, (11), 2829-2845.
10. Carli, G.; Cecchi, L.; Stebbing, J.; Parronchi, P.; Farsi, A., Is asthma protective against COVID-19? *Allergy* **2020**.

11. Izquierdo, J. L.; Almonacid, C.; Gonzalez, Y.; Del Rio-Bermudez, C.; Ancochea, J.; Cardenas, R.; Lumbreras, S.; Soriano, J. B., The Impact of COVID-19 on Patients with Asthma. *Eur Respir J* **2020**.
12. Morais-Almeida, M.; Pite, H.; Aguiar, R.; Ansotegui, I.; Bousquet, J., Asthma and the Coronavirus Disease 2019 Pandemic: A Literature Review. *Int Arch Allergy Immunol* **2020**, *181*, (9), 680-688.
13. Wouters, E. F.; Reynaert, N. L.; Dentener, M. A.; Vernooij, J. H., Systemic and local inflammation in asthma and chronic obstructive pulmonary disease: is there a connection? *Proc Am Thorac Soc* **2009**, *6*, (8), 638-47.
14. Tilemann, L.; Gindner, L.; Meyer, F.; Szecsenyi, J.; Schneider, A., Differences in local and systemic inflammatory markers in patients with obstructive airways disease. *Prim Care Respir J* **2011**, *20*, (4), 407-14.
15. Merali, S.; Barrero, C. A.; Bowler, R. P.; Chen, D. E.; Criner, G.; Braverman, A.; Litwin, S.; Yeung, A.; Kelsen, S. G., Analysis of the plasma proteome in COPD: Novel low abundance proteins reflect the severity of lung remodeling. *COPD* **2014**, *11*, (2), 177-89.
16. Li, F.; Xu, D.; Wang, J.; Jing, J.; Li, Z.; Jin, X., Comparative proteomics analysis of patients with quick development and slow development Chronic Obstructive Pulmonary Disease (COPD). *Life Sci* **2020**, *256*, 117829.
17. Lundberg, M.; Eriksson, A.; Tran, B.; Assarsson, E.; Fredriksson, S., Homogeneous antibody-based proximity extension assays provide sensitive and specific detection of low-abundant proteins in human blood. *Nucleic Acids Res* **2011**, *39*, (15), e102.
18. Assarsson, E.; Lundberg, M.; Holmquist, G.; Bjorkestén, J.; Thorsen, S. B.; Ekman, D.; Eriksson, A.; Rennel Dickens, E.; Ohlsson, S.; Edfeldt, G.; Andersson, A. C.; Lindstedt, P.; Stenvang, J.; Gullberg, M.; Fredriksson, S., Homogenous 96-plex PEA immunoassay exhibiting high sensitivity, specificity, and excellent scalability. *PLoS One* **2014**, *9*, (4), e95192.
19. Zhao, Y.; Qin, L.; Zhang, P.; Li, K.; Liang, L.; Sun, J.; Xu, B.; Dai, Y.; Li, X.; Zhang, C.; Peng, Y.; Feng, Y.; Li, A.; Hu, Z.; Xiang, H.; Ogg, G.; Ho, L. P.; McMichael, A.; Jin, R.; Knight, J. C.; Dong, T.; Zhang, Y., Longitudinal COVID-19 profiling associates IL-1RA and IL-10 with disease severity and RANTES with mild disease. *JCI Insight* **2020**, *5*, (13).
20. Del Valle, D. M.; Kim-Schulze, S.; Huang, H. H.; Beckmann, N. D.; Nirenberg, S.; Wang, B.; Lavin, Y.; Swartz, T. H.; Madduri, D.; Stock, A.; Marron, T. U.; Xie, H.; Patel, M.; Tuballes, K.; Van Oekelen, O.; Rahman, A.; Kovatch, P.; Aberg, J. A.; Schadt, E.; Jagannath, S.; Mazumdar, M.; Charney, A. W.; Firpo-Betancourt, A.; Mendu, D. R.; Jhang, J.; Reich, D.; Sigel, K.; Cordon-Cardo, C.; Feldmann, M.; Parekh, S.; Merad, M.; Gnjatich, S., An inflammatory cytokine signature predicts COVID-19 severity and survival. *Nat Med* **2020**, *26*, (10), 1636-1643.
21. Haljasmagi, L.; Salumets, A.; Rumm, A. P.; Jurgenson, M.; Krassohhina, E.; Remm, A.; Sein, H.; Kareinen, L.; Vapalahti, O.; Sironen, T.; Peterson, H.; Milani, L.; Tamm, A.; Hayday, A.; Kisand, K.; Peterson, P., Longitudinal proteomic profiling reveals increased early inflammation and sustained apoptosis proteins in severe COVID-19. *Sci Rep* **2020**, *10*, (1), 20533.
22. Cheng, B.; Hu, J.; Zuo, X.; Chen, J.; Li, X.; Chen, Y.; Yang, G.; Shi, X.; Deng, A., Predictors of progression from moderate to severe coronavirus disease 2019: a retrospective cohort. *Clin Microbiol Infect* **2020**, *26*, (10), 1400-1405.
23. Izcovich, A.; Ragusa, M. A.; Tortosa, F.; Lavena Marzio, M. A.; Agnoletti, C.; Bengolea, A.; Ceirano, A.; Espinosa, F.; Saavedra, E.; Sanguine, V.; Tassara, A.; Cid, C.; Catalano, H. N.;

- Agarwal, A.; Foroutan, F.; Rada, G., Prognostic factors for severity and mortality in patients infected with COVID-19: A systematic review. *PLoS One* **2020**, *15*, (11), e0241955.
24. Arunachalam, P. S.; Wimmers, F.; Mok, C. K. P.; Perera, R.; Scott, M.; Hagan, T.; Sigal, N.; Feng, Y.; Bristow, L.; Tak-Yin Tsang, O.; Wagh, D.; Coller, J.; Pellegrini, K. L.; Kazmin, D.; Alaaeddine, G.; Leung, W. S.; Chan, J. M. C.; Chik, T. S. H.; Choi, C. Y. C.; Huerta, C.; Paine McCullough, M.; Lv, H.; Anderson, E.; Edupuganti, S.; Upadhyay, A. A.; Bosinger, S. E.; Maecker, H. T.; Khatri, P.; Roupael, N.; Peiris, M.; Pulendran, B., Systems biological assessment of immunity to mild versus severe COVID-19 infection in humans. *Science* **2020**, *369*, (6508), 1210-1220.
25. Yang, Y.; Shen, C.; Li, J.; Yuan, J.; Wei, J.; Huang, F.; Wang, F.; Li, G.; Li, Y.; Xing, L.; Peng, L.; Yang, M.; Cao, M.; Zheng, H.; Wu, W.; Zou, R.; Li, D.; Xu, Z.; Wang, H.; Zhang, M.; Zhang, Z.; Gao, G. F.; Jiang, C.; Liu, L.; Liu, Y., Plasma IP-10 and MCP-3 levels are highly associated with disease severity and predict the progression of COVID-19. *J Allergy Clin Immunol* **2020**, *146*, (1), 119-127 e4.
26. Young, B. E.; Ong, S. W. X.; Ng, L. F. P.; Anderson, D. E.; Chia, W. N.; Chia, P. Y.; Ang, L. W.; Mak, T. M.; Kalimuddin, S.; Chai, L. Y. A.; Pada, S.; Tan, S. Y.; Sun, L.; Parthasarathy, P.; Fong, S. W.; Chan, Y. H.; Tan, C. W.; Lee, B.; Rotzschke, O.; Ding, Y.; Tambyah, P.; Low, J. G. H.; Cui, L.; Barkham, T.; Lin, R. T. P.; Leo, Y. S.; Renia, L.; Wang, L. F.; Lye, D. C.; Singapore Novel Coronavirus Outbreak Research, t., Viral dynamics and immune correlates of COVID-19 disease severity. *Clin Infect Dis* **2020**.
27. Messner, C. B.; Demichev, V.; Wendisch, D.; Michalick, L.; White, M.; Freiwald, A.; Textoris-Taube, K.; Vernardis, S. I.; Egger, A. S.; Kreidl, M.; Ludwig, D.; Kilian, C.; Agostini, F.; Zelezniak, A.; Thibeault, C.; Pfeiffer, M.; Hippenstiel, S.; Hocke, A.; von Kalle, C.; Campbell, A.; Hayward, C.; Porteous, D. J.; Marionni, R. E.; Langenberg, C.; Lilley, K. S.; Kuebler, W. M.; Mulleder, M.; Drosten, C.; Suttorp, N.; Witzenrath, M.; Kurth, F.; Sander, L. E.; Ralser, M., Ultra-High-Throughput Clinical Proteomics Reveals Classifiers of COVID-19 Infection. *Cell Syst* **2020**, *11*, (1), 11-24 e4.
28. Plaza, V.; Alvarez, F.; Calle, M.; Casanova, C.; Cosio, B. G.; Lopez-Vina, A.; Perez de Llano, L.; Quirce, S.; Roman-Rodriguez, M.; Soler-Cataluna, J. J.; Miravittles, M., Consensus on the Asthma-COPD Overlap Syndrome (ACOS) Between the Spanish COPD Guidelines (GesEPOC) and the Spanish Guidelines on the Management of Asthma (GEMA). *Arch Bronconeumol* **2017**, *53*, (8), 443-449.
29. Miravittles, M.; Soler-Cataluna, J. J.; Calle, M.; Molina, J.; Almagro, P.; Quintano, J. A.; Trigueros, J. A.; Cosio, B. G.; Casanova, C.; Antonio Riesco, J.; Simonet, P.; Rigau, D.; Soriano, J. B.; Ancochea, J., Spanish Guidelines for Management of Chronic Obstructive Pulmonary Disease (GesEPOC) 2017. Pharmacological Treatment of Stable Phase. *Arch Bronconeumol* **2017**, *53*, (6), 324-335.
30. Charlson, M. E.; Pompei, P.; Ales, K. L.; MacKenzie, C. R., A new method of classifying prognostic comorbidity in longitudinal studies: development and validation. *J Chronic Dis* **1987**, *40*, (5), 373-83.
31. Kuleshov, M. V.; Jones, M. R.; Rouillard, A. D.; Fernandez, N. F.; Duan, Q.; Wang, Z.; Koplev, S.; Jenkins, S. L.; Jagodnik, K. M.; Lachmann, A.; McDermott, M. G.; Monteiro, C. D.; Gundersen, G. W.; Ma'ayan, A., Enrichr: a comprehensive gene set enrichment analysis web server 2016 update. *Nucleic Acids Res* **2016**, *44*, (W1), W90-7.
32. Ogris, C.; Helleday, T.; Sonnhammer, E. L., PathwAX: a web server for network crosstalk based pathway annotation. *Nucleic Acids Res* **2016**, *44*, (W1), W105-9.
33. Kamburov, A.; Stelzl, U.; Lehrach, H.; Herwig, R., The ConsensusPathDB interaction database: 2013 update. *Nucleic Acids Res* **2013**, *41*, (Database issue), D793-800.

34. Deng, H. J., Long, Q. X., Liu, B. Z., et al., Cytokine biomarkers of COVID-19. *medRxiv* <https://doi.org/10.1101/2020.05.31.20118315> **2020**.
35. Quartuccio, L., Fabris, M., Sonaglia, M., et al., Interleukin 6, soluble interleukin 2 receptor alpha (CD25), monocyte colony-stimulating factor, and hepatocyte growth factor linked with systemic hyperinflammation, innate immunity hyperactivation, and organ damage in COVID-19 pneumonia. *Cytokine* <https://doi.org/10.1016/j.cyto.2021.155438> **2021**.
36. Aoyama, E.; Kubota, S.; Khattab, H. M.; Nishida, T.; Takigawa, M., CCN2 enhances RANKL-induced osteoclast differentiation via direct binding to RANK and OPG. *Bone* **2015**, *73*, 242-8.
37. Boyce, B. F.; Xing, L., Functions of RANKL/RANK/OPG in bone modeling and remodeling. *Arch Biochem Biophys* **2008**, *473*, (2), 139-46.
38. Meizlish, M. L.; Pine, A. B.; Bishai, J. D.; Goshua, G.; Nadelmann, E. R.; Simonov, M.; Chang, C. H.; Zhang, H.; Shallow, M.; Bahel, P.; Owusu, K.; Yamamoto, Y.; Arora, T.; Atri, D. S.; Patel, A.; Gbyli, R.; Kwan, J.; Won, C. H.; Dela Cruz, C.; Price, C.; Koff, J.; King, B. A.; Rinder, H. M.; Wilson, F. P.; Hwa, J.; Halene, S.; Damsky, W.; van Dijk, D.; Lee, A. I.; Chun, H., A neutrophil activation signature predicts critical illness and mortality in COVID-19. *medRxiv* **2020**.
39. Thwaites, R., S., et al., Elevated antiviral, myeloid and endothelial inflammatory markers in severe COVID-19. *medRxiv* <https://doi.org/10.1101/2020.10.08.20209411> **2020**.
40. Katneni, U. K.; Alexaki, A.; Hunt, R. C.; Schiller, T.; DiCuccio, M.; Buehler, P. W.; Ibla, J. C.; Kimchi-Sarfaty, C., Coagulopathy and Thrombosis as a Result of Severe COVID-19 Infection: A Microvascular Focus. *Thromb Haemost* **2020**, *120*, (12), 1668-1679.
41. Chung, S.; Kim, J. E.; Kim, J. Y.; Lee, D. S.; Han, K. S.; Kim, H. K., Circulating hepatocyte growth factor as an independent prognostic factor of disseminated intravascular coagulation. *Thromb Res* **2010**, *125*, (6), e285-93.
42. Gudbrandsdottir, S.; Ghanima, W.; Nielsen, C. H.; Feng, X.; Hasselbalch, H. C.; Bussel, J., Effect of thrombopoietin-receptor agonists on circulating cytokine and chemokine levels in patients with primary immune thrombocytopenia (ITP). *Platelets* **2017**, *28*, (5), 478-483.
43. Vinholt, P. J.; Overgaard, M.; Diederichsen, A. C.; Mickley, H.; Poulsen, T. S.; Sand, N. P.; Nybo, M.; Rasmussen, L. M., An ELISA for the quantitation of von Willebrand factor: osteoprotegerin complexes in plasma. *Thromb Res* **2013**, *131*, (5), 396-400.
44. Nagashima, M.; Hasegawa, J.; Kato, K.; Yamazaki, J.; Nishigai, K.; Ishiwata, T.; Asano, G.; Yoshino, S., Hepatocyte growth factor (HGF), HGF activator, and c-Met in synovial tissues in rheumatoid arthritis and osteoarthritis. *J Rheumatol* **2001**, *28*, (8), 1772-8.
45. Oliveira, A. G.; Araujo, T. G.; Carvalho, B. M.; Rocha, G. Z.; Santos, A.; Saad, M. J. A., The Role of Hepatocyte Growth Factor (HGF) in Insulin Resistance and Diabetes. *Front Endocrinol (Lausanne)* **2018**, *9*, 503.
46. Tarantino, G.; Citro, V.; Conforti, P.; Balsano, C.; Capone, D., Is There a Link between Basal Metabolic Rate, Spleen Volume and Hepatic Growth Factor Levels in Patients with Obesity-Related NAFLD? *J Clin Med* **2019**, *8*, (10).
47. Tang, Y. L.; Dong, X. Y.; Zeng, Z. G.; Feng, Z., Gene expression-based analysis identified NTNG1 and HGF as biomarkers for diabetic kidney disease. *Medicine (Baltimore)* **2020**, *99*, (1), e18596.
48. Hadjadj, J.; Yatim, N.; Barnabei, L.; Corneau, A.; Boussier, J.; Smith, N.; Pere, H.; Charbit, B.; Bondet, V.; Chenevier-Gobeaux, C.; Breillat, P.; Carlier, N.; Gauzit, R.; Morbieu, C.; Pene, F.; Marin, N.; Roche, N.; Szwebel, T. A.; Merklings, S. H.; Treluyer, J. M.; Veyer, D.; Mouthon, L.; Blanc, C.; Tharaux, P. L.; Rozenberg, F.; Fischer, A.; Duffy, D.; Rieux-Laucat, F.; Kerneis, S.;

- Terrier, B., Impaired type I interferon activity and inflammatory responses in severe COVID-19 patients. *Science* **2020**, 369, (6504), 718-724.
49. Maremanda, K. P.; Sundar, I. K.; Li, D.; Rahman, I., Age-dependent assessment of genes involved in cellular senescence, telomere and mitochondrial pathways in human lung tissue of smokers, COPD and IPF: Associations with SARS-CoV-2 COVID-19 ACE2-TMPRSS2-Furin-DPP4 axis. *medRxiv* **2020**.
50. Hoffmann, M.; Kleine-Weber, H.; Schroeder, S.; Kruger, N.; Herrler, T.; Erichsen, S.; Schiergens, T. S.; Herrler, G.; Wu, N. H.; Nitsche, A.; Muller, M. A.; Drosten, C.; Pohlmann, S., SARS-CoV-2 Cell Entry Depends on ACE2 and TMPRSS2 and Is Blocked by a Clinically Proven Protease Inhibitor. *Cell* **2020**, 181, (2), 271-280 e8.
51. Salazar-Mather, T. P.; Hamilton, T. A.; Biron, C. A., A chemokine-to-cytokine-to-chemokine cascade critical in antiviral defense. *J Clin Invest* **2000**, 105, (7), 985-93.
52. Jain, R.; Ramaswamy, S.; Harilal, D.; Uddin, M.; Loney, T.; Nowotny, N.; Alsuwaidi, H.; Varghese, R.; Deesij, Z.; Alkhajeh, A.; Khansaheb, H.; Alsheikh-Ali, A.; Abou Tayoun, A., Host transcriptomic profiling of COVID-19 patients with mild, moderate, and severe clinical outcomes. *Comput Struct Biotechnol J* **2021**, 19, 153-160.
53. Kwon, J. S.; Kim, J. Y.; Kim, M. C.; Park, S. Y.; Kim, B. N.; Bae, S.; Cha, H. H.; Jung, J.; Kim, M. J.; Lee, M. J.; Choi, S. H.; Chung, J. W.; Shin, E. C.; Kim, S. H., Factors of Severity in Patients with COVID-19: Cytokine/Chemokine Concentrations, Viral Load, and Antibody Responses. *Am J Trop Med Hyg* **2020**, 103, (6), 2412-2418.
54. Sims, J. T.; Krishnan, V.; Chang, C. Y.; Engle, S. M.; Casalini, G.; Rodgers, G. H.; Bivi, N.; Nickoloff, B. J.; Konrad, R. J.; de Bono, S.; Higgs, R. E.; Benschop, R. J.; Ottaviani, S.; Cardoso, A.; Nirula, A.; Corbellino, M.; Stebbing, J., Characterization of the cytokine storm reflects hyperinflammatory endothelial dysfunction in COVID-19. *J Allergy Clin Immunol* **2021**, 147, (1), 107-111.
55. Abers, M. S.; Delmonte, O. M.; Ricotta, E. E.; Fintzi, J.; Fink, D. L.; de Jesus, A. A. A.; Zarembek, K. A.; Alehashemi, S.; Oikonomou, V.; Desai, J. V.; Canna, S. W.; Shakoory, B.; Dobbs, K.; Imberti, L.; Sottini, A.; Quiros-Roldan, E.; Castelli, F.; Rossi, C.; Brugnani, D.; Biondi, A.; Bettini, L. R.; D'Angio, M.; Bonfanti, P.; Castagnoli, R.; Montagna, D.; Licari, A.; Marseglia, G. L.; Gliniewicz, E. F.; Shaw, E.; Kahle, D. E.; Rastegar, A. T.; Stack, M.; Myint-Hpu, K.; Levinson, S. L.; DiNubile, M. J.; Chertow, D. W.; Burbelo, P. D.; Cohen, J. I.; Calvo, K. R.; Tsang, J. S.; Consortium, N. C.-.; Su, H. C.; Gallin, J. I.; Kuhns, D. B.; Goldbach-Mansky, R.; Lionakis, M. S.; Notarangelo, L. D., An immune-based biomarker signature is associated with mortality in COVID-19 patients. *JCI Insight* **2021**, 6, (1).
56. Lieberman, N. A. P.; Peddu, V.; Xie, H.; Shrestha, L.; Huang, M. L.; Mears, M. C.; Cajimat, M. N.; Bente, D. A.; Shi, P. Y.; Bovier, F.; Roychoudhury, P.; Jerome, K. R.; Moscona, A.; Porotto, M.; Greninger, A. L., In vivo antiviral host transcriptional response to SARS-CoV-2 by viral load, sex, and age. *PLoS Biol* **2020**, 18, (9), e3000849.
57. Bouquet, J.; Tabor, D. E.; Silver, J. S.; Nair, V.; Tovchigrechko, A.; Griffin, M. P.; Esser, M. T.; Sellman, B. R.; Jin, H., Microbial burden and viral exacerbations in a longitudinal multicenter COPD cohort. *Respir Res* **2020**, 21, (1), 77.
58. Stolz, D.; Papakonstantinou, E.; Grize, L.; Schilter, D.; Strobel, W.; Louis, R.; Schindler, C.; Hirsch, H. H.; Tamm, M., Time-course of upper respiratory tract viral infection and COPD exacerbation. *Eur Respir J* **2019**, 54, (4).
59. McKendry, R. T.; Spalluto, C. M.; Burke, H.; Nicholas, B.; Cellura, D.; Al-Shamkhani, A.; Staples, K. J.; Wilkinson, T. M., Dysregulation of Antiviral Function of CD8(+) T Cells in the Chronic Obstructive Pulmonary Disease Lung. Role of the PD-1-PD-L1 Axis. *Am J Respir Crit Care Med* **2016**, 193, (6), 642-51.

60. Guo-Parke, H.; Linden, D.; Weldon, S.; Kidney, J. C.; Taggart, C. C., Mechanisms of Virus-Induced Airway Immunity Dysfunction in the Pathogenesis of COPD Disease, Progression, and Exacerbation. *Front Immunol* **2020**, *11*, 1205.
61. UtoKaparch, S.; Sze, M. A.; Gosselink, J. V.; McDonough, J. E.; Elliott, W. M.; Hogg, J. C.; Hegele, R. G., Respiratory viral detection and small airway inflammation in lung tissue of patients with stable, mild COPD. *COPD* **2014**, *11*, (2), 197-203.
62. Seemungal, T.; Harper-Owen, R.; Bhowmik, A.; Moric, I.; Sanderson, G.; Message, S.; Maccallum, P.; Meade, T. W.; Jeffries, D. J.; Johnston, S. L.; Wedzicha, J. A., Respiratory viruses, symptoms, and inflammatory markers in acute exacerbations and stable chronic obstructive pulmonary disease. *Am J Respir Crit Care Med* **2001**, *164*, (9), 1618-23.

Supplementary table 1

Annotation of the differentially expressed proteins between patients and healthy controls

nr.	Protein	Name	Kruskal Wallis P value	F-test	ANOVA P	ANOVA (FDR)	t-test (FDR < 0.05)	
							Asthma	COPD
1	HGF	Hepatocyte Growth Factor	4.64E-13	32.82	1.16E-13	7.74E-12		↑
2	CDCP1	CUB Domain Containing Protein 1	1.52E-10	28.08	6.10E-12	2.04E-10		↑
3	MCP-3	Monocyte Chemoattractant Protein 3	7.70E-11	24.76	1.05E-10	2.34E-09		↑
4	CXCL9	C-X-C Motif Chemokine Ligand 9	2.62E-11	24.33	1.52E-10	2.55E-09		↑
5	OPG	Osteoprotegerin	1.68E-07	19.92	7.20E-09	9.65E-08		↑
6	CCL25	C-C Motif Chemokine Ligand 25	1.75E-08	19.68	8.89E-09	9.93E-08		↑
7	TNFRSF9	TNF Receptor Superfamily Member 9	9.59E-06	14.15	1.31E-06	1.25E-05		↑
8	IL-10RB	Interleukin 10 Receptor Subunit Beta	1.56E-05	13.30	2.86E-06	2.23E-05		↑
9	SLAMF1	Signaling Lymphocytic Activation Molecule Family Member 1	5.62E-06	13.25	3.00E-06	2.23E-05		↑
10	IL6	Interleukin 6	3.99E-07	12.39	6.63E-06	4.44E-05	↑	↑
11	PD-L1	Programmed Cell Death 1 Ligand 1	1.02E-04	12.03	9.25E-06	5.63E-05		↑
12	CCL11	C-C Motif Chemokine Ligand 11	2.77E-06	11.65	1.32E-05	7.38E-05		↑
13	MCP-4	Monocyte Chemoattractant Protein 4	4.09E-06	11.27	1.89E-05	9.72E-05		↑
14	VEGFA	Vascular Endothelial Growth Factor A	3.24E-04	10.75	3.05E-05	1.46E-04		↑
15	CST5	Cystatin D	1.40E-04	9.60	9.00E-05	4.02E-04		↑
16	CSF-1	Colony Stimulating Factor 1	5.59E-04	8.52	2.49E-04	9.91E-04		↑
17	CD40	CD40 Molecule	8.06E-04	8.51	2.51E-04	9.91E-04		↑
18	MCP-1	Monocyte Chemotactic Protein-1	2.36E-05	8.20	3.37E-04	1.26E-03		↑
19	FIT3L	Fms Related Receptor Tyrosine Kinase 3 Ligand	2.02E-05	7.97	4.23E-04	1.49E-03		↑
20	CCL3	C-C Motif Chemokine Ligand 3	2.86E-07	6.85	1.22E-03	4.09E-03		↑
21	CCL23	C-C Motif Chemokine Ligand 23	1.50E-03	6.65	1.48E-03	4.73E-03		↑
22	CXCL10	C-X-C Motif Chemokine Ligand 10	3.05E-04	6.56	1.62E-03	4.94E-03		↑
23	CX3CL1	C-X3-C Motif Chemokine Ligand 1	6.18E-03	6.47	1.77E-03	5.15E-03		↑
24	CXCL11	C-X-C Motif Chemokine Ligand 11	1.78E-04	6.19	2.30E-03	6.42E-03		↑
25	IL8	Interleukin 8	3.60E-04	6.00	2.78E-03	7.33E-03		↑
26	X4E-BP1	Eukaryotic Translation Initiation Factor 4E Binding Protein 1	3.38E-04	5.97	2.85E-03	7.33E-03		↑
27	TRANCE	TNF Superfamily Member 11	1.77E-03	5.86	3.18E-03	7.89E-03		↓
28	MMP-1	Matrix Metalloproteinase 1	1.12E-02	5.82	3.30E-03	7.90E-03		↑
29	EN-RAGE	Extracellular Newly Identified RAGE-Binding Protein	2.02E-03	5.76	3.49E-03	8.07E-03		↑
30	CCL19	C-C Motif Chemokine Ligand 19	3.00E-03	5.63	3.95E-03	8.81E-03		↑
31	IL18	Interleukin 18	9.92E-03	5.47	4.64E-03	1.00E-02		↑
32	CXCL1	C-X-C Motif Chemokine Ligand 1	8.55E-03	5.22	5.91E-03	1.24E-02		↑
33	CD5	CD5 Molecule	1.13E-02	4.85	8.42E-03	1.71E-02		↑
34	TNF	Tumor Necrosis Factor	1.89E-03	4.75	9.32E-03	1.84E-02		↑
35	TGF-alpha	Transforming Growth Factor Alpha	2.46E-03	4.30	1.44E-02	2.76E-02		↑
36	LIF-R	LIF Receptor Subunit Alpha	7.47E-03	3.91	2.10E-02	3.91E-02		↓
37	DNER	Delta/Notch Like EGF Repeat Containing	1.41E-02	3.56	2.95E-02	5.31E-02		↓
38	ST1A1	Sulfotransferase Family 1A Member 1	3.07E-02	3.54	3.01E-02	5.31E-02		↓
39	LAP-TGF-beta-1	Transforming Growth Factor Beta 1	3.97E-02	3.50	3.13E-02	5.38E-02		↑
40	MMP-10	Matrix Metalloproteinase 10	6.83E-02	3.30	3.81E-02	6.39E-02		↑
41	uPA	Plasminogen Activator, Urokinase	2.41E-02	3.23	4.08E-02	6.67E-02		↑
42	CASP-8	Caspase 8	7.34E-02	3.01	5.06E-02	8.08E-02		↑
43	FGF-21	Fibroblast Growth Factor 21	7.34E-02	2.85	5.92E-02	9.22E-02		↑
44	CCL4	C-C Motif Chemokine Ligand 4	3.24E-02	2.83	6.07E-02	9.24E-02		↑
45	ADA	Adenosine Deaminase	5.15E-02	2.62	7.41E-02	1.10E-01		↑
46	CXCL5	C-X-C Motif Chemokine Ligand 5	8.86E-02	2.48	8.53E-02	1.22E-01		↑
47	TNFSF14	TNF Superfamily Member 14	1.18E-01	2.47	8.58E-02	1.22E-01		↑
48	CXCL6	C-X-C Motif Chemokine Ligand 6	1.57E-01	2.26	1.06E-01	1.49E-01		↑
49	TNFB	Lymphotoxin Alpha	2.13E-01	2.19	1.14E-01	1.55E-01		↓
50	IFN-gamma	Interferon Gamma	6.73E-02	1.83	1.62E-01	2.16E-01		↑
51	TWEAK	TNF Receptor Superfamily Member 12A	2.54E-01	1.70	1.84E-01	2.42E-01		↑
52	IL-17C	Interleukin 17C	2.15E-01	1.59	2.07E-01	2.66E-01		↑
53	CD8A	CD8a Molecule	3.68E-01	1.49	2.26E-01	2.86E-01		↑
54	MCP-2	Monocyte Chemotactic Protein 2	7.26E-02	1.41	2.45E-01	3.05E-01		↑
55	OSM	Oncostatin M	3.22E-01	1.33	2.67E-01	3.25E-01		↑
56	FGF-19	Fibroblast Growth Factor 19	3.09E-01	1.06	3.48E-01	4.16E-01		↑
57	IL-12B	Interleukin 12B	7.24E-01	0.87	4.19E-01	4.93E-01		↑
58	CD6	CD6 Molecule	2.91E-01	0.68	5.06E-01	5.83E-01		↑
59	CCL20	C-C Motif Chemokine Ligand 20	7.25E-01	0.67	5.13E-01	5.83E-01		↑
60	SIRT2	Sirtuin 2	5.48E-01	0.50	6.05E-01	6.76E-01		↑
61	AXIN1	Axin 1	3.94E-01	0.48	6.22E-01	6.83E-01		↑
62	SCF	Stem cell factor	3.07E-01	0.42	6.57E-01	7.10E-01		↑
63	IL-18R1	Interleukin 18 Receptor 1	7.65E-01	0.17	8.40E-01	8.93E-01		↑
64	TRAIL	TNF-Related Apoptosis Inducing Ligand	6.84E-01	0.16	8.56E-01	8.96E-01		↑
65	IL10	Interleukin 10	3.00E-01	0.06	9.44E-01	9.73E-01		↑
66	STAMBP	STAM Binding Protein	9.13E-01	0.01	9.88E-01	9.88E-01		↑
67	CD244	CD244 molecule	8.94E-01	0.01	9.88E-01	9.88E-01		↑