

S-ketamine in patient-controlled analgesia with oxycodone improves analgesia in a dose-dependent manner after major lumbar fusion surgery: a randomized, double-blind, placebo-controlled clinical trial

Elina C.V. Brinck^{1,2,#a} ¶, Taru Virtanen^{3,¶, #b}, Sanna Mäkelä⁴, Venla Soini⁵, Ville-Veikko Hynninen⁴, Jukka Mulo⁴, Urmas Savolainen⁴, Juho Rantakokko⁵, Kreu Maisniemi¹, Antti Liukas³, Klaus T. Olkkola², Vesa Kontinen⁶, Pekka Tarkkila¹, Marko Peltoniemi³, Teijo I. Saari^{3,4, #b}

¹Department of Anaesthesiology, Töölö Hospital, Division of Anaesthesiology, Intensive Care and Pain Medicine, University of Helsinki and HUS Helsinki University Hospital, Helsinki, Finland

²Department of Anaesthesiology, Intensive Care Medicine and Pain Medicine, University of Helsinki and HUS Helsinki University Hospital, Helsinki, Finland

³Department of Anaesthesiology and Intensive Care, University of Turku, Turku, Finland

⁴Division of Perioperative Services, Intensive Care Medicine and Pain Management; Turku University Hospital

⁵Division of the musculoskeletal system at Turku University Hospital, Turku University Hospital, Department of Orthopaedics, University of Turku, Turku, Finland.

⁶Department of Anaesthesiology, Jorvi Hospital, Division of Anaesthesiology, Intensive Care and Pain Medicine, University of Helsinki and HUS Helsinki University Hospital, Helsinki, Finland

^{#a} Current address: Department of Anesthesiology, Töölö Hospital, HUS Helsinki University Hospital, Helsinki, Finland

^{#b} Current address: Department of Anaesthesiology and Intensive Care, University of Turku, Turku, Finland

* Corresponding author

Email: teisaa@utu.fi (TIS)

29 Abstract

30 *BACKGROUND:* Spinal fusion surgery causes severe pain. Strong opioids, commonly used as
31 postoperative analgesics, may have unwanted side effects. S-ketamine may be an effective
32 analgesic adjuvant in opioid patient-controlled analgesia (PCA). However, the optimal adjunct S-
33 ketamine dose to reduce postoperative opioid consumption is still unknown.

34 *METHODS:* We randomized 107 patients at two tertiary hospitals in a double-blinded, placebo-
35 controlled clinical trial of adults undergoing major lumbar spinal fusion surgery. Patients were
36 randomly allocated to four groups in order to compare the effects of three different doses of
37 adjunct S-ketamine (0.25, 0.5, and 0.75 mg ml⁻¹) or placebo on postoperative analgesia in
38 oxycodone PCA. Study drugs were administered for 24 hours postoperative after which
39 oxycodone-PCA was continued for further 48 hours. Our primary outcome was cumulative
40 oxycodone consumption at 24 hours after surgery.

41 *RESULTS:* Of the 100 patients analyzed, patients receiving 0.75 mg ml⁻¹ S-ketamine in
42 oxycodone PCA needed 25% less oxycodone at 24 h postoperatively (61.2 mg) compared with
43 patients receiving 0.5 mg ml⁻¹ (74.7 mg) or 0.25 mg ml⁻¹ (74.1 mg) S-ketamine in oxycodone or
44 oxycodone alone (81.9 mg) (mean difference: -20.6 mg; 95% confidence interval [CI]: -41 to -
45 0.20; $P = 0.048$). A significant beneficial effect in mean change of pain intensity at rest was seen
46 in the group receiving 0.75 mg ml⁻¹ S-ketamine in oxycodone PCA compared with patients
47 receiving lower ketamine doses or oxycodone alone (standardized effect size: 0.17, 95% CI:
48 0.013–0.32, $P = 0.033$). The occurrence of adverse events was similar among the groups.

49 *CONCLUSIONS:* Oxycodone PCA containing S-ketamine as an adjunct at a ratio of 1: 0.75
50 decreased cumulative oxycodone consumption at 24 h after major lumbar spinal fusion surgery
51 without additional adverse effects.

52

Introduction

Severe postoperative pain is common after major spinal fusion surgery.¹ Inadequate pain management is associated with increased postoperative complications, delayed ambulation, and chronic postoperative pain.² This may lead to unplanned readmission after surgery, decreased patient satisfaction, and increased health-care costs. Opioids have been the cornerstone of postoperative analgesia after major surgery, but the increasing awareness of the problems associated with their use, such as opioid-associated adverse effects, opioid-induced hyperalgesia, and the risk of addiction, combined with the current opioid crisis has encouraged the search for alternative analgesic strategies.

Multimodal analgesia targets different pain signaling pathways by combining two or more analgesic modalities, aiming at additive or even synergistic analgesic effect.³ Multimodal analgesia has proven feasible after major spinal fusion surgery in an effort to optimize pain relief while minimizing opioid-related adverse effects.^{4,5}

Patient-controlled analgesia (PCA) use is associated with lower pain intensity and greater patient satisfaction compared with conventional (oral, subcutaneous, or intramuscular) administration routes.⁶ PCA may enhance patient autonomy because the analgesic drug is readily available. Morphine is the most frequently used opioid in PCA, while oxycodone use is associated with higher patient satisfaction scores.^{6,7}

Low-dose ($<1 \text{ mg kg}^{-1}$) ketamine inhibits N-methyl-D-aspartate receptors in nociceptive neurons and activates descending inhibitory pain pathways, resulting in attenuated wind up and central sensitization.⁸⁻¹¹ The effect of perioperative intravenous ketamine as an adjunct analgesic has been documented in several clinical trials and meta-analyses.¹² A recent review article concluded

that combining ketamine with an opioid in IV-PCA during the postoperative period has a beneficial effect on analgesia and opioid consumption.¹³ In orthopedic surgery, earlier trials found negative or unclear results with opioid-ketamine PCA.¹⁴⁻¹⁶ However, studies' vast heterogeneity and small sample sizes have failed to establish a possible a possible dose-responsiveness. Thus, the optimal ketamine to opioid ratio in intravenous PCA is yet to be elucidated.

We hypothesized that adjunct S-ketamine with oxycodone in an intravenous PCA is superior to oxycodone, with reduced opioid-associated adverse events in the immediate postoperative period after major spinal surgery. This randomized, double-blind, placebo-controlled study compared three different doses of S-ketamine with placebo added as an adjuvant to oxycodone IV-PCA administered for 24 hours after lumbar spinal fusion in adult patients. After the study phase, IV oxycodone-PCA without ketamine was continued for further 48 hours. The primary outcome was cumulative oxycodone consumption at 24 h after surgery. The secondary endpoints included postoperative pain intensity, oxycodone consumption, and occurrence of adverse events up to 72 h after surgery.

91 **Methods**

92 Ethics and registration

93 This study (DoseRespKeta) was approved by the institutional review board of the Hospital
 94 District of Southwest Finland (number: *103/1800/2016*) and the Finnish Medicines Agency
 95 (FIMEA, KL 135/2016). The trial was registered before patient enrollment at clinicaltrials.gov
 96 (NCT02994173; Principal investigator: TIS; Date of registration: September 11, 2017) and in the
 97 EudraCT database (*2016-002887-14*; Principal investigator: TIS; Date of registration: October
 98 12, 2016). No changes to methods were made after trial commencement. The detailed study
 99 protocol is available upon request from the authors. Written informed consent was obtained from
 100 the participants before inclusion to the study. This manuscript complies with the Consolidated
 101 Standards of Reporting Trials guidelines.

102 Patient population

103 This two-center study was carried out at the T-hospital and TYKS ORTO units at Turku
 104 University Hospital in Turku, Southwest Finland and the HUS Helsinki University Hospital's
 105 Töölö Unit in Helsinki, Finland. One hundred and seven adult patients scheduled for elective
 106 posterolateral lumbar spine fusion with bilateral transpedicular screw instrumentation under
 107 general anesthesia were recruited between 6 February 2017 and 31 October 2019 (Fig 1).

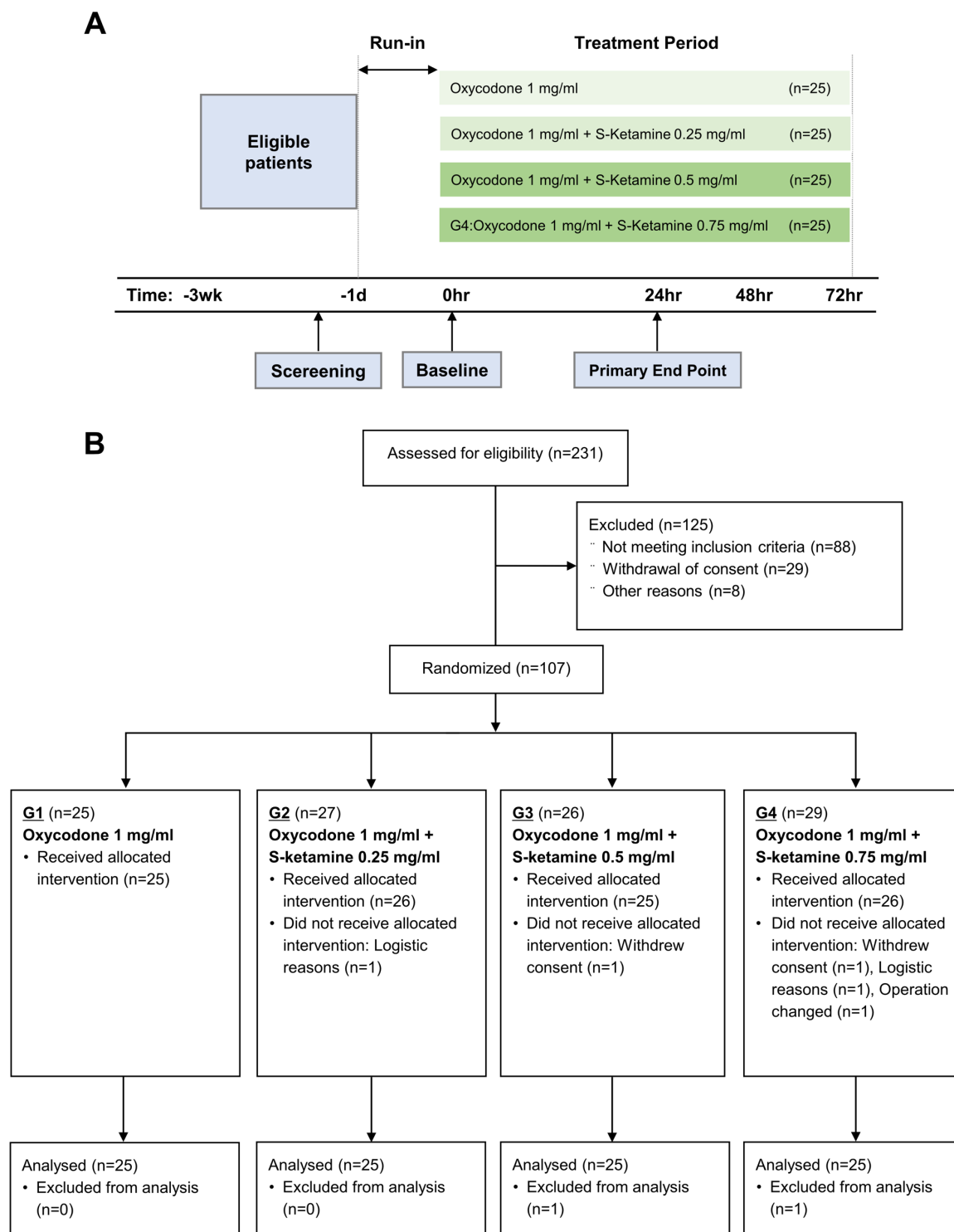


Figure 1. DoseRespKeta trial structure and CONSORT 2009 flow diagram. CONSORT

indicates Consolidated Standards of Reporting Trials.

111

112 Patients with previous history of intolerance to a study drug, concomitant drug therapy with
113 strong opioids or strong cytochrome P450 3A4 or 2B6 inductor or inhibitors 2 weeks prior to
114 study, younger than 20 years and older than 80 years, BMI >35, sleep apnea or any other sleep
115 disorder, existing significant liver or kidney disease, history of alcoholism, drug abuse, and
116 psychological or other emotional problems likely to invalidate informed consent were excluded.
117 Patients were pre-screened by a preoperative care nurse. Potentially eligible subjects were
118 directed to investigators for further screening and information. ECVB and MP enrolled all
119 participants.

120

121 Study design, randomization, and blinding

122 A randomized, double-blind, controlled dose-response study design was used (Fig 1). The
123 allocation ratio was 1:1:1:1. Subjects were randomly assigned to one of four dosing groups (G)
124 for intravenous PCA:

- 125 • G1, oxycodone 1 mg ml⁻¹ alone
- 126 • G2, oxycodone 1 mg ml⁻¹ + S-ketamine 0.25 mg ml⁻¹ (ratio 1:0.25)
- 127 • G3, oxycodone 1 mg ml⁻¹ + S-ketamine 0.5 mg ml⁻¹ (ratio 1:0.5),
- 128 • G4, oxycodone 1 mg ml⁻¹ + S-ketamine 0.75 mg ml⁻¹ (ratio 1:0.75).

129 An independent statistician created a computer-generated randomization list. The list was sent to
130 the local hospital pharmacy, which took care of assignment. Coded PCA reservoirs with no other
131 markings were delivered to the operation room by the pharmacy on the day of surgery to ensure
132 double blinding. Patients, researchers, and clinical staff were blinded to group allocation.

Conduct of the study and anesthesia

After providing written informed consent, patients learned to use the PCA system (CADD®-Solis VIP and CADD-Legacy® PCA Pump Model 6300, Smiths Medical, Minneapolis, MN, USA) and numerical rating scale (NRS; 0 denotes no pain, and 10 indicates the worst imaginable pain). Preoperatively, all patients received 1000 mg of paracetamol orally. Routine anesthetic monitoring included pulse oximetry, electrocardiography, invasive blood pressure via radial artery cannulation, and body temperature measurement. General anesthesia was induced and maintained with propofol (Propofol-Lipuro 20 mg ml⁻¹; B. Braun Melsungen AG, Melsungen, Germany) and remifentanyl (Remifentanyl B. Braun 1 mg ml⁻¹; B. Braun Melsungen AG, Melsungen, Germany) target-controlled infusions. Schnider- and Minto-effect-site models were used for propofol and remifentanyl, respectively.^{17,18} No opioids other than remifentanyl were used before or during anesthesia. Rocuronium bromide (Esmeron 10 mg ml⁻¹; Merck Sharp & Dohme B.V., BN Haarlem, The Netherlands) 0.4–0.6 mg kg⁻¹ facilitated endotracheal intubation. The depth of anesthesia (bispectral index BIS or entropy index) was targeted from 45 to 55 with entropy (GE B850 Monitor Entropy Module, GE, Helsinki, Finland) or BIS monitor (The Philips BIS module, Philips Medical Systems, Eindhoven, The Netherlands). Mean arterial pressure (MAP) was maintained at 65–75 mmHg. Intravenous bolus doses of ephedrine and/or noradrenaline infusion were administered if necessary. Local anesthetic was injected to the skin incision area before incision (lidocaine 5 mg kg⁻¹ c. adrenaline 5 µg kg⁻¹; Orion Pharma, Espoo, Finland) and after wound closure (levobupivacaine 2.5 mg kg⁻¹; Chirocaine 2.5 mg ml⁻¹, AbbVie S.r.l., Campoverde di Aprilia, Italy) as per hospital routines.

At the end of surgery, the PCA pump was attached to the intravenous line and activated. The first dose of PCA solution was given just after the cessation of propofol and remifentanyl infusions,

before patients woke up from anesthesia. As soon as the patient awoke, they were encouraged to use PCA to treat postoperative pain if necessary. The starting dose of oxycodone (Oxycodone Orion 10 mg ml⁻¹; Orion Pharma, Espoo, Finland) in the PCA solution was 2 mg with a lockout interval of 5 min. When NRS was 4 or lower, the PCA oxycodone dose was decreased to 1 mg (G1–G4). The study PCA dosing continued for 24 h from the end of surgery. Thereafter, the PCA cassette was changed to only an oxycodone-containing solution (G1). The total duration of PCA treatment was three days. Postoperative nausea and vomiting (PONV) were treated with intravenous ondansetron and dehydrobenzperidol if necessary. Potential excessive unpleasant psychotomimetic effects from S-ketamine (Ketanest-S 5 mg ml⁻¹; Pfizer Manufacturing Belgium NV, Puurs, Belgium) were treated with 1 mg intravenous bolus of lorazepam.

Measurements and data handling

Heart rate, blood pressure, respiratory rate, peripheral oxygen saturation, NRS (0–10) for pain intensity at rest and upon movement, level of sedation with the Richmond Agitation-Sedation scale (RASS), nausea, vomiting, pruritus, unpleasant dreams or any other adverse effect or sensation thought to be caused by PCA, cumulative PCA pressings, or the doses given were registered immediately after arrival in the recovery room and at the following time points: five, 30, 60, 120, and 240 minutes and eight, 24, 48, and 72 hours later. Patients evaluated their pain relief satisfaction (yes/no) at the end of postoperative days 1–3.

All clinical patient data were collected on individual case report forms. All data were subsequently transferred to electronic format for exploratory data analysis.

Primary and secondary outcomes

The primary endpoint was cumulative oxycodone consumption at 24 h after surgery, the end of period when three different ratios of S-ketamine were added to oxycodone PCA solution. Secondary outcomes were NRS and RASS ratings, oxycodone consumption, PONV, pruritus, and unpleasant dreams or other adverse effects.

Sample size calculation

Based on a previous study,¹⁹ we calculated that 25 patients per group were necessary to demonstrate a clinically significant 25% reduction in oxycodone consumption with a level of significance of $P = 0.05$ and power of 80%.

Statistical analyses

The authors approved the statistical analysis plan before the analyses began. Explorative data analysis was conducted before statistical inference by plotting and tabulating the data. Normality assumptions were tested before analysis, using probit plots and the Shapiro–Wilk W-test. Levene's test was used to evaluate homogeneity of variances.

The primary outcome measure, cumulative opioid consumption during the first 24 h is presented as both median and interquartile range (IQR; Q1–Q3) and mean (SD). Cumulative opioid consumption at 24, 48, and 72 h was analyzed by using a linear mixed model for repeated measurements. The model included the following factors: PCA dosing groups G1–G4, age (as a continuous covariate), age, gender, prior use of opioids (yes/no), prior use of gabapentinoids (yes/no), cumulative amount of dose requests during PCA, and postoperative time (24, 48, and 72 h). In addition, the interaction with time and opioid consumption and prior use of weak opioids was examined. Non-significant terms were excluded from the final model. An

198 unstructured covariance structure was used. Square-root transformation was used to fulfill
 199 assumptions of the model. Studentized residuals were used to check assumptions.

200 To study pain burden, we analyzed if the mean change in NRS over time differed between the
 201 groups during the first 24 hours postoperatively. A hierarchical linear mixed model was used
 202 including time as a within-factor (with five time points), PCA dosing group as a between-factor,
 203 and their interaction. The time factor was handled as categorical to estimate all possible shapes
 204 of mean changes over time. NRS values were standardized before analysis by centering and
 205 scaling to have a mean of zero and a SD of one. Effect sizes were computed as the eta squared
 206 based on the H-statistic.²⁰ We also studied in a separate model, whether age, sex, weight, chronic
 207 pain, and prior use of weak opioids or gabapentinoids affected the results. Differences in NRS
 208 and sedation (measured with RASS) between the groups were evaluated at the end of post-
 209 anesthesia care unit (PACU) treatment (t = 480 min) and at 24 h with a Kruskal–Wallis test.

210 Differences in postoperative nausea and vomiting, pruritus, and unpleasant dreams (yes/no)
 211 among groups at 24, 48, and 72 h postoperatively were evaluated with ordinal logistic regression.
 212 The effect of age, sex, weight, chronic pain, and prior use of weak opioids or gabapentinoids on
 213 the results were tested as covariate effects. To analyze the effect of adjuvant ketamine treatment
 214 on these parameters, we included changes in parameters to the model during the previous 24 h.

215 Descriptive statistics are shown as means and SD when variables are normally distributed and
 216 otherwise as medians and IRQs. Categorical variables are summarized as counts and
 217 percentages. The statistical significance level was set to $P < 0.05$. RStudio (version 1.0.153)²¹
 218 with R (version 3.6.0)²² and ggplot2 (version 2.2.1) were used for statistical analyses and
 219 graphical presentations.

220 **Results**

221 A total of 231 patients were assessed for eligibility. 107 patients were recruited in the study (Fig
 222 1B) between February 2017 and October 2019. Two patients withdrew their consent before
 223 randomization and were excluded. Two patients were further excluded due to logistical reasons
 224 before surgery. In one case, the operation plan was changed after randomization and this patient
 225 was also excluded from the study. Two more patients withdrew consent during the first 24 h after
 226 the start of intervention and were excluded from the final analysis. Thus, 25 patients in each of
 227 the four groups were included in the analysis. Patient median age was 60 (28–78) years and 77%
 228 were women. No significant differences in baselines characteristics were present among the
 229 groups (Table 1).

230 **Table 1.** Perioperative Data and Characteristics of Patients Who Were Included in the Analysis.

	All	G1	G2	Standardized Differences Between G1 and G2	G3	Standardized Differences Between G1 and G3	G4	Standardized Differences Between G1 and G4
n	100	25	25		25		25	
Age, yr (median, range)	60 (28-78) ²	56 (34-78)	62 (28-76)	0.214	60 (40-75)	0.433	62 (30-76)	0.329
Female/male, n (%)	45/55	11/14 (44%) ¹	11/14 (44%)	<0.001	12/13 (48%)	<0.001	11/14 (44%)	0.08
Body weight (kg)	77.7 (15.6)	77.7 (15.6)	74.9 (15.9)	0.215	79.0 (14.1)	0.278	77.0 (11.2)	0.156
BMI (kg/m ²)	26.9 (4.3)	26.6 (4.6)	27.3 (4.3)	0.003	26.9 (3.5)	0.152	26.8 (4.9)	0.063
Smoking (yes/no), n (%)	9/91	1/24 (4%)	3/22 (12%)	0.169	3/22 (12%)	0.298	2/23 (7.7%)	0.298
Previous chronic pain (yes/no), n (%)	15/85	22/3 (88%) ¹	19/6 (76%)	0.115	22/3 (88%)	0.316	22/3 (88%)	<0.001
Median [IRQ] preoperative pain intensity (NRS)	6 [4, 8]	6 [5, 7]	5 [5, 7]	0.1	7 [5, 8]	0.42	7 [5, 8]	0.023
Preoperative opioid (yes/no), n (%)	5/94	2/23 (8.0%) ¹	2/23 (8.0%)	0.169	0/25 (0%)	<0.001	1/24 (3.8%)	0.417
Preoperative gabapentinod (yes/no), n (%)	18/82	3/22 (12%) ¹	3/22 (12%)	0.22	7/18 (28%)	<0.001	5/20 (19%)	0.408
Diabetes (yes/no), n (%)	8/92	1/24 (4.0%) ¹	3/22 (12%)	0.169	1/25 (4.0%)	0.298	3/22 (11%)	<0.001
ASA physical status, n (%)				0.408		0.182		0.331
1	24	7 (28.0)	6 (24.0)		6 (24.0)		5 (20.0)	
2	66	17 (68.0)	15 (60.0)		17 (68.0)		17 (68.0)	
3	10	1 (4.0)	4 (16.0)		2 (8.0)		3 (12.0)	

Duration of surgery (min)	306 (94)	325 (89)	292 (64)	0.424	303 (125)	0.202	305 (89)	0.226
Propofol during surgery (mg·kg ⁻¹)	37 (12)	39 (11)	36 (8)	0.259	35 (17)	0.26	36 (10)	0.248
Remifentanyl during surgery (μg·kg ⁻¹ ·min ⁻¹)	0.12 (0.05)	0.13 (0.06)	0.12 (0.04)	0.27	0.11 (0.04)	0.429	0.11 (0.04)	0.383

231

232 Data are mean (standard deviation) or [range) unless otherwise stated. Standardized difference is the difference in the mean of a
 233 variable between 2 groups divided by an estimate of the standard deviation of that variable.²¹

234 G1, Patient controlled intravenous oxycodone 1 mg/ml (n=25); G2, Patient controlled intravenous oxycodone 1 mg/ml+ ketamine
 235 0.25 mg/ml (n=25); G3, Patient controlled intravenous oxycodone 1 mg/ml+ ketamine 0.5 mg/ml (n=25); G4, Patient controlled
 236 intravenous oxycodone 1 mg/ml+ ketamine 0.75 mg/ml (n=25).; n, number of non-missing value; BMI, body-mass index; IQR,
 237 interquartile range; NRS, numerical rating scale; ASA, American Society of Anesthesiologists.

238 ¹Percentage of females or yes-answers

239 Opioid consumption

240 Cumulative oxycodone consumption was highest in group G1 and lowest in G4 (Fig 2, Table 2).
 241 The median total oxycodone consumption during the first 24 h after surgery was 81.9 mg (IQR:
 242 63.2–101), 74.1 mg (IQR: 62.1–86.1), 74.7 mg (IQR: 62.2–87.1), and 61.3 mg (IQR: 48.7–73.8)
 243 in groups G1–G4, respectively. Postoperative cumulative oxycodone consumption was
 244 significantly reduced in the group with the highest ketamine concentration (G4) compared with
 245 the control group (G1): the mean difference was -21 mg (95% CI: -41 to -0.2, $P = 0.048$), -26
 246 mg (95% CI: -55 to -6.2, $P = 0.044$) and -41 mg (95% CI: -68 to -14, $P = 0.003$) at 24, 48, and
 247 72 h after surgery, respectively (Fig 2). There was no significant difference in time to dose
 248 reduction from 2 mg to 1 mg PCA-bolus among groups (median [IQR]: 125 min [78–203], 127
 249 min [82–174], 112 min [69–185] and 145 min [79–211] in groups G1–G4, respectively, $P =$
 250 0.838).

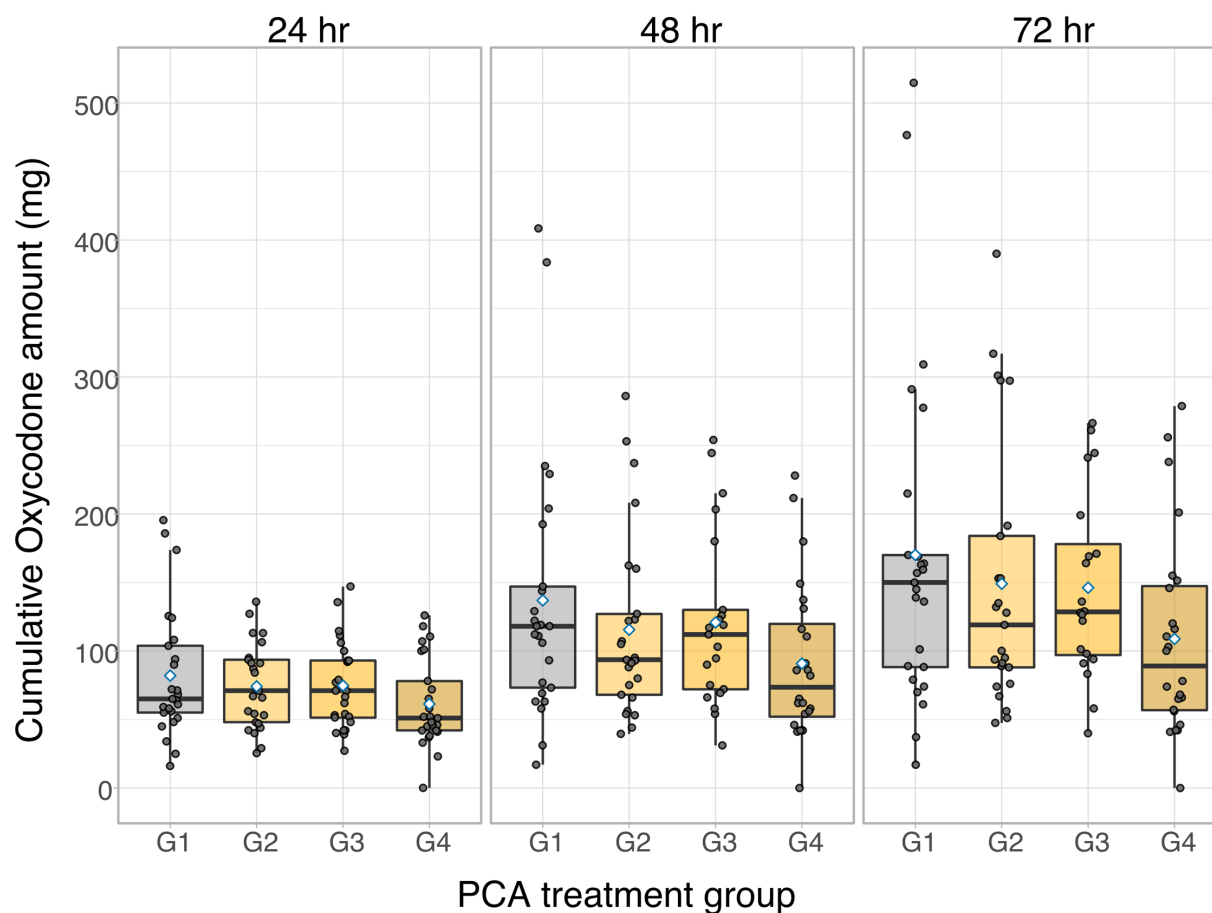


Figure 2. Postoperative cumulative oxycodone consumption during the first 24 h in four patient-controlled analgesia (PCA) treatment groups (G1–G4). PCA, patient-controlled analgesia. Box plots show the median and 25–75th percentiles, and the whiskers indicate the minimum and maximum. Blue diamonds show the mean oxycodone consumption in each plot.

256 **Table 2.** Oxycodone consumption during the study after the beginning of PACU care

Time after PACU start	All (n=100)	G1 (n=25)	G2 (n=25)	G3 (n=25)	G4 (n=25)
60 min					
Mean (SD)	10.9 (4.2)	11.9 (3.4)	10.3 (3.9)	11.3 (4.2)	10.4 (5.1)
Median [IRQ]	10.0 [8.00, 14.0]	12.0 [8.0, 16.0]	10.0 [7.40, 14.0]	10.0 [8.0, 14.0]	12.0 [6.00, 14.0]
120 min					
Mean (SD)	19.2 (7.2)	21.2 (6.6)	18.2 (5.6)	20.0 (8.5)	17.3 (7.5)
Median [IRQ]	18.0 [14.0, 24.0]	21.0 [16.0, 25.0]	18.0 [16.0, 22.0]	18.0 [13.3, 24.0]	15.0 [12.0, 24.0]
240 min					
Mean (SD)	28.2 (12.5)	31.0 (13.0)	26.5 (9.3)	28.6 (14.8)	26.7 (12.6)
Median [IRQ]	26.8 [20.0, 35.0]	28.0 [25.0, 35.0]	26.6 [23.0, 34.0]	24.0 [18.0, 36.0]	26.0 [18.0, 34.0]
480 min					
Mean (SD)	35.5 [26.8, 46.3]	37.0 [31.0, 44.0]	34.0 [29.0, 49.0]	33.0 [26.0, 49.0]	36.0 [23.0, 45.0]
Median [IRQ]	37.6 (16.7)	39.6 (16.9)	36.4 (13.1)	39.1 (18.3)	35.5 (18.5)
24 h					
Mean (SD)	65.0 [46.8, 93.7]	65.0 [55.0, 104]	71.0 [48.0, 93.6]	71.0 [51.3, 93.0]	51.0 [42.0, 78.0]
Median [IRQ]	72.9 (36.5)	81.9 (47.6)	74.1 (30.7)	74.7 (31.8)	61.3 (32.3)
48 h					
Mean (SD)	117 (74.0)	137 (96)	118 (67.5)	121 (63.6)	90.8 (57.3)
Median [IRQ]	99.0 (65.2, 136)	118.0 (73.2, 147)	94.3 (73.2, 135)	112.0 (72.0, 130)	73.5 (52.0, 120)
72 h					

Mean (SD)	145 (95.6)	170 (123)	156 (97.7)	146 (67.0)	109 (73.3)
Median [IRQ]	127 [77.5, 170]	150 [88.2, 170]	128 [90.0, 189]	129 [97.0, 178]	89.0 [56.8, 147]

257

258 PACU, postoperative care unit, G1, Patient controlled intravenous oxycodone 1 mg/ml (n=25); G2, Patient controlled intravenous
 259 oxycodone 1 mg/ml+ ketamine 0.25 mg/ml (n=25); G3, Patient controlled intravenous oxycodone 1 mg/ml+ ketamine 0.5 mg/ml
 260 (n=25); G4, Patient controlled intravenous oxycodone 1 mg/ml+ ketamine 0.75 mg/ml (n=25).

Acute pain measurements during postoperative care

Postoperative mean change in NRS measured at rest over the first 24 h differed significantly between groups G4 and G1 (standardized effect size: 0.17, 95% CI: 0.013–0.32, $P = 0.033$), but not between group G3 and G1 (standardized effect size: -0.097, 95% CI: -0.25–0.059, $P = 0.223$) or G2 and G1 (standardized effect size -0.052, 95% CI: -0.21–0.10, $P = 0.51$) (Fig 3A). Age, sex, weight, chronic pain, and prior use of weak opioids or gabapentinoids had no effect on the results.

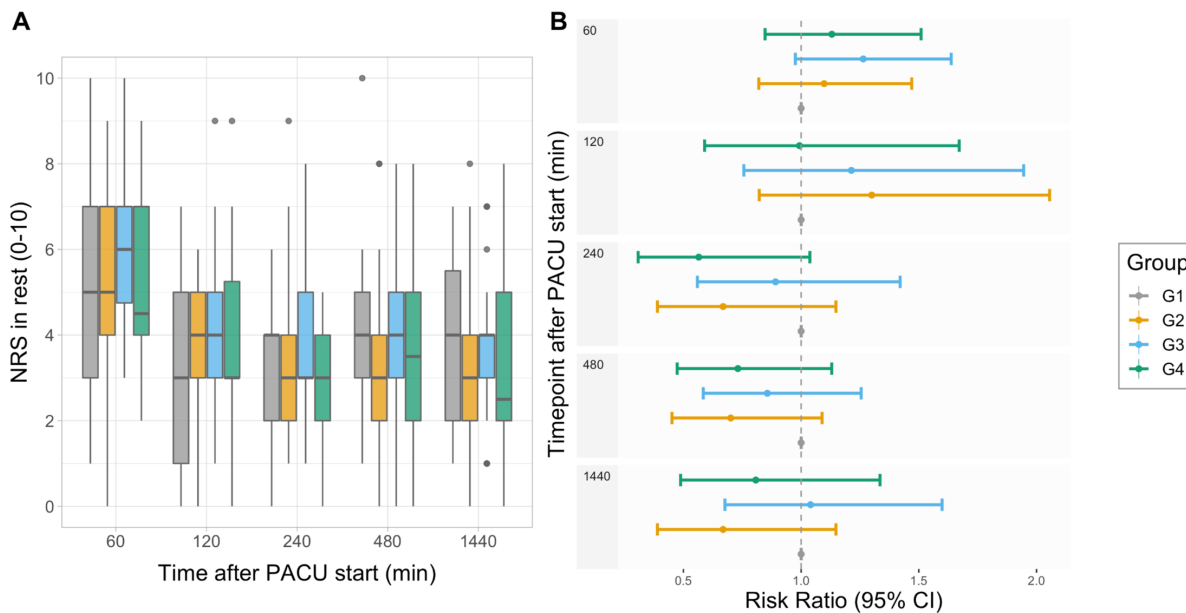


Figure 3. A) Patient-reported numerical rating scale (NRS) values at rest during the first 24 h in four patient-controlled analgesia (PCA) treatment groups G1-G4. Box plots show the median and 25–75th percentiles, and the whiskers indicate the minimum and maximum. (B) Risk ratios (95% CI) for reporting NRS value 4 or higher. PACU, postoperative care unit; CI, confidence interval.

To evaluate the effect of patient satisfaction, we analyzed the risk of having NRS >3 at rest at different timepoints during PACU treatment. For this purpose, NRS values were dichotomized depending on the pain level that patients experienced (NRS >3 or NRS ≤3). Although patient satisfaction, measured by patient-reported NRS was smaller in groups G2–G4 than group G1 at the end of PACU treatment, the finding was not statistically significant (Fig 3B).

Postoperative sedation

At arrival to PACU, median (IQR) RASS was -1 (-2–0), and all patients were cooperative. RASS increased to 0 (-1 to 0) within the following 30 minutes. After 60 minutes, all patients were fully awake (median [IQR] RASS: 0 [0, 0]), and they remained fully awake until the end of the study. No significant differences in RASS scores were present between the groups during the 72-hour follow-up (Table 3).

----- Table 3 here -----

Table 3. Opioid related adverse events during the study.

Adverse effect		All	G1	G2	G3	G4
Sedation (RASS-scale)						
0 min		-1 [-2, 0] ¹	-1 [-2, 0]	-1 [-3, 0]	-1 [-1, 0]	-1 [-2, 0]
5 min		-1 [-2, 0]	-1 [-2, 0]	0 [-1, 0]	0 [0, -1]	-1 [-1, 0]
30 min		0 [0, 1]	0 [0, -1]	0 [-1, 0]	0 [-1, 1]	0 [-1, 0]
60 min		0 [0, 0]	0 [0, -1]	0 [0, 0]	0 [0, 0]	0 [0, 0]
2 hr		0 [0, 0]	0 [0, 0]	0 [0, 0]	0 [0, 0]	0 [0, 0]
4 hr		0 [0, 0]	0 [0, 0]	0 [0, 0]	0 [0, 0]	0 [0, 0]
8 hr		0 [0, 0]	0 [0, 0]	0 [0, 0]	0 [0, 0]	0 [0, 0]
24 hr		0 [0, 0]	0 [0, 0]	0 [0, 0]	0 [0, 0]	0 [0, 0]
PONV		n=100	n=23	n=25	n=25	n=25
24 hr	Yes (%)	16 (16)	2 (8)	3 (12)	6 (24)	5 (22)
	No (%)	82 (82)	23 (92)	22 (88)	19 (76)	18 (78)

48 hr	Yes (%)	11 (11)	2 (8)	1 (4)	5 (20)	3 (13)
	No (%)	90 (90)	21 (84)	24 (96)	20 (80)	20 (87)
72 hr	Yes (%)	11 (11)	2 (8)	1 (4)	5 (20)	3 (13)
	No (%)	90 (90)	21 (84)	24 (96)	20 (80)	20 (87)
Pruritus		n=100	n=25	n=25	n=25	n=25
24 hr	Yes (%)	16 (16)	4 (16)	7 (28)	4 (16)	1 (4)
	No (%)	84 (84)	21 (84)	18 (72)	21 (84)	24 (96)
48 hr	Yes (%)	10 (10)	4 (16)	4 (16)	1 (4)	1 (4)
	No (%)	90 (90)	21 (84)	21 (84)	24 (96)	24
72 hr	Yes (%)	7 (7)	2 (8)	1 (4)	2 (8)	2 (8)
	No (%)	93 (93)	23(92)	24 (96)	23 (92)	23 (92)
Unpleasant dreams		n=100	n=25	n=25	n=25	n=25
24 hr	Yes (%)	9 (9)	2 (8)	2 (8)	2 (8)	3 (12)
	No (%)	91 (91)	23 (92)	23 (92)	23 (92)	22 (88)
48 hr	Yes (%)	10 (10)	4 (16)	4 (16)	1 (4)	1 (4)
	No (%)	90 (90)	21 (84)	21 (84)	24 (96)	24 (96)
72hr	Yes (%)	7 (7)	2 (8)	1 (4)	2 (8)	2 (8)
	No (%)	93 (93)	23(92)	24 (96)	23 (92)	23 (92)

289

290 ¹ RASS-scale given as median [interquartile range]

291 RASS, Richmond Agitation-Sedation Scale; PONV, postoperative nausea and vomiting; G1,
 292 Patient controlled intravenous oxycodone 1 mg/ml (n=25); G2, Patient controlled intravenous
 293 oxycodone 1 mg/ml+ ketamine 0.25 mg/ml (n=25); G3, Patient controlled intravenous
 294 oxycodone 1 mg/ml+ ketamine 0.5 mg/ml (n=25); G4, Patient controlled intravenous oxycodone
 295 1 mg/ml+ ketamine 0.75 mg/ml (n=25).

296

297 Opioid-related adverse effects

298 Opioid-related adverse events during the study are summarized in Table 3. Nausea and vomiting
 299 were the most frequent adverse events. At 24 h after PCA start, 16% of patients (n = 16) reported
 300 nausea. Increasing ketamine dose seemed to increase the incidence of PONV, but the changes

were not statistically significant. Similarly, no differences were seen at the end of 48- and 72-h follow-up. We analyzed these adverse effects further with logistic regression. Our results indicate that preoperative weak opioid use increased the incidence of PONV significantly (odds ratio: 9.23, 95% CI: 1.4–75). Adjuvant ketamine in PCA had no effect (odds ratio: 3.9, 95% CI: 0.68–4.7) on PONV, and after changing to normal PCA with only oxycodone at 24 h, the incidence of PONV did not change (odds ratio: 0.53, 95% CI: 0.62–4.7).

At 24 h after PCA start, 16% of patients (n = 16) reported pruritus (Table 3). The PCA treatment groups did not show statistically significant differences at any of the three time points (24, 48, or 72 h after the start of PCA). Similarly, the incidence of pruritus did not change after changing to normal PCA with oxycodone only.

Nine patients (9%) reported nightmares or unpleasant dreams (Table 3). The groups showed no difference in this regard, and the incidence did not change after changing to normal PCA with oxycodone only. Age, sex, weight, chronic pain, and prior use of gabapentinoids had no effect on the results.

Other adverse effects

There were no severe adverse effects. None of the patients developed respiratory insufficiency requiring invasive or non-invasive ventilation during the 72-h study period. No rescue medications were required during the study.

Discussion

This randomized, double-blind, placebo-controlled study evaluated the effect of adding incremental doses of S-ketamine to oxycodone PCA in patients who underwent major lumbar spinal fusion surgery. Our results demonstrate that patients who received oxycodone:S-ketamine ratio 1:0.75 (a bolus containing oxycodone 1 mg + S-ketamine 0.75mg per ml) for postoperative analgesia consumed significantly less oxycodone at 24 h postoperatively compared with participants who received lower S-ketamine doses or oxycodone alone.

A significant beneficial effect in mean change in pain intensity at rest was seen in the group receiving 0.75 mg ml⁻¹ S-ketamine in oxycodone PCA compared with patients receiving lower doses of ketamine or oxycodone alone. Cumulative oxycodone dose or adjunct S-ketamine did not significantly influence postoperative nausea and vomiting. Occurrence of pruritus, nightmares, or unpleasant dreams did not differ significantly among study groups.

Major spinal surgery is increasing in frequency and complexity. It is associated with severe postoperative pain,¹ which is not easily amenable to regional anesthesia and requires a multimodal approach. This is a crowded field of clinical research, with many previous studies evaluating various single doses of ketamine with different opioids in many types of surgery. Yet, there is little previous data that assesses the effect of adjunct ketamine to an IV opioid-PCA exclusively after lumbar spinal fusion surgery in an opioid-naïve patient population. A recent review and meta-analysis evaluated the effect of perioperative ketamine for analgesia in spine surgery.²⁴ However, in most of the included trials, ketamine was administered intraoperatively followed by postoperative IV-PCA or ketamine was given both as a pre-incisional bolus and as a postoperative IV-PCA with a background infusion and a bolus on-demand.^{25,26} This may confuse evaluation of the analgesic effect of IV-PCA administration of ketamine with an opioid.

Additionally, the meta-analysis included patients undergoing lumbar microdiscectomy with postoperative opioid IV-PCA.²⁷ It could be anticipated that pain after lumbar microdiscectomy is less severe than after major lumbar spinal fusion surgery, and thus postoperative conditions are not comparable. Furthermore, one previous study was an open-label trial²⁸ and another had only female patients,²⁹ making it difficult to generalize results.

Previous studies have shown an opioid-sparing effect of intravenous low-dose ketamine after spine surgery in opioid-dependent patients.^{30, 31} Additionally, Loftus (2010) and Nielsen (2017) showed that the benefit of ketamine increased with the amount of preoperatively administered opioids.^{30, 31} Recently Nielsen et al. (2019) showed that perioperative intravenous S-ketamine reduced analgesic use and pain and improved labor market attachment of opioid-dependent patients one year after spine surgery.³² Another recent study further confirmed that postoperative low-dose ketamine infusion reduced hydromorphone requirements for the first 24 h after spinal fusion surgery in opioid-tolerant patients, but not in opioid-naïve patients.³³ However, it is recognized that previous opioid use alters pain processing, and these patients typically require higher opioid doses postoperatively. Thus, results of these studies cannot be directly applied to all patients.

Although the effect of adjunct ketamine in the opioid-tolerant patient population after lumbar fusion surgery is quite well established, the effect in the opioid-naïve population is less clear. Additionally, the optimal dose of adjunct ketamine in an opioid IV-PCA is unknown. Data indicating low incidence of ketamine-related adverse events (PONV and CNS adverse events) has been consistent in previous studies.^{11,12,33} Likewise, our study showed that adjunct S-ketamine in oxycodone IV-PCA was well tolerated. There are several reports of ketamine's beneficial effect on analgesia, opioid-sparing, and PONV in the postoperative period, without

increasing the risk for hallucinations. However, the opioid:ketamine ratio in IV-PCA in previous studies was heterogeneous, ranging from 1:0.5 to 1:2.5, and these studies were also heterogeneous in regard to the opioid used, anesthesia methodology, type of surgery, patient population, and use of racemic- or S-ketamine.^{34,35}

Our study has limitations. Our study was designed to detect a difference in 24 h cumulative oxycodone consumption, which was the primary outcome. The beneficial effect of adjunct S-ketamine in an oxycodone IV-PCA in reducing the 24 h oxycodone consumption did not correlate with a reduction in opioid-related side effects, but this could be secondary to a lack of power. On the other hand, the strengths of our study include that the patient population was homogenous across study groups, consisting of adult men and women who underwent posterolateral lumbar spine fusion with bilateral transpedicular screw instrumentation.

Postoperative analgesic consumption as a surrogate measure for pain has been criticized on the basis of reports that it is skewed, where a minority of patients consume more than half of the postoperative analgesic. A recent study encouraged reporting categorized parameters as more clinically intuitive.³⁶ As discussed before, dichotomizing continuous measures leads to several problems.³⁷ Previously, analgesic consumption has been analyzed with point estimates or determining area under the curve, but both of these methods introduce considerable bias. Statisticians recommend using a model-based approaches, which has been used here. Therefore, both mean (SD) and median (IQR) have been reported. From a clinical perspective, it may be unrealistic to achieve a totally pain-free state after major surgical trauma following surgery such as instrumented lumbar spinal fusion. We think that IV-PCA enables the patient to titrate the opioid to reach a certain individual, tolerable pain intensity level. Therefore, we consider that changes in cumulative opioid consumption could serve as an acceptable surrogate for changes in

postoperative pain. However, we also evaluated the outcome by using risk ratios for pain intensity NRS >3 as a surrogate for perioperative pain experience, and adjunct S-ketamine seemed to decrease the likelihood of pain exceeding NRS >3.

Our study adds new data considering the optimal dose of adjunct S-ketamine to an oxycodone IV-PCA after lumbar spinal fusion surgery. Because the oxycodone:S-ketamine ratio of 1:0.75 was not associated with increased adverse events, we suggest that future studies aimed at solving the optimal opioid:S-ketamine ratio evaluate that dose and higher, possibly with pharmacokinetic testing to characterize the dose-concentration-effect relationship.

In conclusion, IV-PCA containing adjunct S-ketamine with oxycodone at a ratio of 1:0.75 after major lumbar spinal fusion surgery is effective in decreasing the total oxycodone consumption at 24 h after surgery. This oxycodone:S-ketamine ratio is also well tolerated. As previous studies have mainly focused on intraoperative administration, even showing no analgesic effect of intraoperative S-ketamine in opioid-naïve patients³⁸, this finding adds new data to the feasibility of adjunct S-ketamine with oxycodone for postoperative pain management after major lumbar spinal fusion surgery.

Funding: This work was supported by a governmental research grant from the Hospital District of South-West Finland, Finland (#13821) (TIS).

Conflicts of interest: None.

Clinical Trial Number: clinicaltrials.gov #NCT02994173; Date of registration: September 11, 2017.

Abbreviated title: PCA with S-ketamine reduces postoperative opioid need

Author contributions:

Elina CV Brinck: This author helped in study planning, study conduct, data analysis, and writing and revision of the manuscript.

Taru Virtanen and Venla Soini: These authors helped in study conduct, data analysis, and writing and revision of the manuscript.

Sanna Mäkelä: This author helped in study conduct and revision of the manuscript.

Ville-Veikko Hynninen, Jukka Mulo, Urmas Savolainen, Juho Rantakokko, Kreu Maisniemi, and Antti Liukas: These authors helped in study conduct

Klaus T. Olkkola, Vesa K Kontinen and Pekka Tarkkila: These authors helped in study design and planning, study conduct, and revision of the manuscript.

Marko Peltoniemi This author helped in study design and planning, data analysis, and writing and revision of the manuscript.

Teijo I. Saari: This author was the principal investigator. He helped in study design and planning, data analysis, statistical inference, and writing and revision of the manuscript.

All authors accepted the final manuscript.

Keywords: postoperative; analgesia; PCA clinical advantages; opioid; ketamine

Acknowledgments

Eliisa Löyttyniemi, MSc, Institute of Biomedicine, University of Turku gave invaluable

statistical help. The nursing staff of K- and T-operating units, TYKS ORTO, and neurosurgical

wards at Turku University Hospital (Turku, Finland) and the staff of surgical ward 2 and the
anesthesia nurses of the Department of Orthopaedics and Trauma Surgery at Töölö Hospital
(Helsinki, Finland) are acknowledged for their support conducting the study. Sini Alanko, RN;
Toni Broman, RN; Virva Kuusisto, RN; and Jaana Virtanen, RN are thanked for their help at the
preoperative clinic. Tuula Eklund, RN; Ulla Simola, RN; and Saku Koskinen, RN are
acknowledged for their generous help with the patient data system. Local hospital pharmacies in
Turku and Helsinki University Hospitals are acknowledged, and ward pharmacists Anne
Honkanen, Kira Honkanen, Elina Luoto, Leea Rissanen, Mari Saalasti and Reija Silvennoinen
are thanked for fruitful collaboration.

438

References

1. Gerbershagen HJ, Aduckathil S, van Wijck AJM, Peelen LM, Kalkman CJ, Meissner W. Pain intensity on the first day after surgery: a prospective cohort study comparing 179 surgical procedures. *Anesthesiology*. 2013;118:934–944.
2. Kehlet H, Jensen TS, Woolf CJ. Persistent postsurgical pain: risk factors and prevention. *Lancet*. 2006;367:1618–1625.
3. Apfelbaum JL, Chen C, Mehta SS, Gan TJ. Postoperative pain experience: results from a national survey suggest postoperative pain continues to be undermanaged. *Anesth Analg*. 2003;97:534–540.
4. Kurd MF, Kreitz T, Schroeder G, Vaccaro AR. The role of multimodal analgesia in spine surgery. *J Am Acad Orthop Surg*. 2017;25:260–268.
5. Cozowicz C, Bekeris J, Poeran J, Zubizarreta N, Schwenk E, Girardi F, et al. Multimodal pain management and postoperative outcomes in lumbar spine fusion surgery: a population-based cohort study. *Spine (Phila Pa 1976)*. 2020;45:580–589.
6. McNicol E, Ferguson MC, Hudcova J. Patient-controlled analgesia versus non-patient controlled analgesia for postoperative pain. *Cochrane Database Syst Rev*. 2015;6:CD003348.
7. Dinges HC, Otto S, Stay DK, Bäumlein S, Waldmann S, Kranke P, et al. Side effect rates of opioids in equianalgesic doses via intravenous patient-controlled analgesia: a systematic review and network meta-analysis. *Anesth Analg*. 2019;129:1153–1162.
8. Peltoniemi MA, Hagelberg NM, Olkkola KT, Saari TI. Ketamine: a review of clinical pharmacokinetics and pharmacodynamics in anesthesia and pain therapy. *Clin Pharmacokinet*. 2016;55:1059–1077.

- 462 9. Basbaum AI, Bautista DM, Scherrer G, Julius D. Cellular and molecular mechanisms of
463 pain. *Cell*. 2009; 139:267–284.
- 464 10. Hirota K, Lambert DG. Ketamine: new uses for an old drug? *Br J Anaesth*. 2011;107:123–
465 126.
- 466 11. Woolf CJ. Pain amplification—a perspective on the how, why, when, and where of central
467 sensitization. *J Appl Biobehav Res*. 2018;23:e12124.
- 468 12. Brinck EC, Tiippana E, Heesen M, Bell RF, Straube S, Moore RA, et al. Perioperative
469 intravenous ketamine for acute postoperative pain in adults. *Cochrane Database Syst Rev*.
470 2018;12:CD012033.
- 471 13. Assouline B, Tramèr MR, Kreienbühl L, Elia N. Benefit and harm of adding ketamine to
472 an opioid in a patient-controlled analgesia device for the control of postoperative pain:
473 systematic review and meta-analyses of randomized controlled trials with trial sequential
474 analyses. *Pain*. 2016;157:2854–2864.
- 475 14. Sveticic G, Gentilini A, Eichenberger U, Luginbühl M, Curatolo M. Combinations of
476 morphine with ketamine for patient-controlled analgesia: a new optimization method.
477 *Anesthesiology*. 2003;98:1195–11205.
- 478 15. Sveticic G, Eichenberger U, Curatolo M. Safety of mixture of morphine with ketamine for
479 postoperative patient-controlled analgesia: an audit with 1026 patients. *Acta Anaesthesiol*
480 *Scand*. 2005;49:870–875.
- 481 16. Sveticic G, Farzanegan F, Zmoos P, Zmoos S, Eichenberger U, Curatolo M. Is the
482 combination of morphine with ketamine better than morphine alone for postoperative
483 intravenous patient-controlled analgesia? *Anesth Analg*. 2008;106:287–293, table of
484 contents.

- 485 17. Schnider TW, Minto CF, Shafer SL, Gambus PL, Andresen C, Goodale DB, et al. The
486 influence of age on propofol pharmacodynamics. *Anesthesiology*. 1999; 90:1502–1516.
- 487 18. Minto CF, Schnider TW, Egan TD, Youngs E, Lemmens HJ, Billard V, et al. Influence of
488 age and gender on the pharmacokinetics and pharmacodynamics of remifentanyl. I. Model
489 development. *Anesthesiology*. 1997; 86:10–23.
- 490 19. Lin T-F, Yeh Y-C, Lin F-S, Wang Y-P, Sun W-Z, Fan S-F. Effect of combining
491 dexmedetomidine and morphine for intravenous patient-controlled analgesia. *Br J Anaesth*.
492 2009;102:117–122.
- 493 20. Tomczak M, Tomczak E. The need to report effect size estimates revisited. An overview of
494 some recommended measures of effect size. *Trends Sport Sci*. 2014;1:19–25.
- 495 21. RStudio Team. RStudio: Integrated Development Environment for R. 2020. Available at:
496 <http://www.rstudio.com/>. Accessed: 13 March, 2020.
- 497 22. R Core Team. R: A Language and Environment for Statistical Computing. 2019. Available
498 at: <http://www.r-project.org/>. Accessed: 13 March 2020.
- 499 23. Austin PC. Using the standardized difference to compare the prevalence of a binary
500 variable between two groups in observational research. *Commun Stat Simul Comput*.
501 2009;38:1228–1234.
- 502 24. Pendi A, Field R, Farhan S-D, Eichler M, Bederman SS. Perioperative ketamine for
503 analgesia in spine surgery: a meta-analysis of randomized controlled trials. *Spine (Phila Pa*
504 *1976)*. 2018; 43:E299–E307.
- 505 25. Pacreu S, Fernández Candil J, Moltó L, Carazo J, Fernández Galinski S. The perioperative
506 combination of methadone and ketamine reduces post-operative opioid usage compared
507 with methadone alone. *Acta Anaesthesiol Scand*. 2012;56:1250–1256.

- 508 26. Yeom JH, Chon M-S, Jeon WJ, Shim J-H. Perioperative ketamine with the ambulatory
509 elastometric infusion pump as an adjuvant to manage acute postoperative pain after spinal
510 fusion in adults: a prospective randomized trial. *Korean J Anesthesiol.* 2012;63:54–58.
- 511 27. Javery KB, Ussery TW, Steger HG, Colclough GW. Comparison of morphine and
512 morphine with ketamine for postoperative analgesia. *Can J Anaesth.* 1996;43:212–215.
- 513 28. Nitta R, Goyagi T, Nishikawa T. Combination of oral clonidine and intravenous low-dose
514 ketamine reduces the consumption of postoperative patient-controlled analgesia morphine
515 after spine surgery. *Acta Anaesthesiol Taiwan.* 2013;51:14–17.
- 516 29. Song JW, Shim JK, Song Y, Yang SY, Park SJ, Kwak YL. Effect of ketamine as an
517 adjunct to intravenous patient-controlled analgesia, in patients at high risk of postoperative
518 nausea and vomiting undergoing lumbar spinal surgery. *Br J Anaesth.* 2013;111:630–635.
- 519 30. Loftus RW, Yeager MP, Clark JA, Brown JR, Abdu WA, Sengupta DK. et al.
520 Intraoperative ketamine reduces perioperative opiate consumption in opiate-dependent
521 patients with chronic back pain undergoing back surgery. *Anesthesiology.* 2010;113:639–
522 646.
- 523 31. Nielsen RV, Fomsgaard JS, Siegel H, Martuseviicius R, Nikolajsen L, Dahl JB, al.
524 Intraoperative ketamine reduces immediate postoperative opioid consumption after spinal
525 fusion surgery in chronic pain patients with opioid dependency: a randomized, blinded
526 trial. *Pain.* 2017;158:463–470.
- 527 32. Nielsen RV, Fomsgaard JS, Nikolajsen L, Dahl JB, Mathiesen O. Intraoperative S-
528 ketamine for the reduction of opioid consumption and pain one year after spine surgery: a
529 randomized clinical trial of opioid-dependent patients. *Eur J Pain.* 2019;23:455–460.

33. Boenigk K, Echevarria GC, Nisimov E, Bergen Granell AE von, Cuff GE, Wang J, Atchabahian A. Low-dose ketamine infusion reduces postoperative hydromorphone requirements in opioid-tolerant patients following spinal fusion: a randomised controlled trial. *Eur J Anaesthesiol.* 2019;36:8–15.
34. Wang L, Johnston B, Kaushal A, Cheng D, Zhu F, Martin J. Ketamine added to morphine or hydromorphone patient-controlled analgesia for acute postoperative pain in adults: a systematic review and meta-analysis of randomized trials. *Can J Anaesth.* 2016;63:311–325.
35. Carstensen M, Møller AM. Adding ketamine to morphine for intravenous patient-controlled analgesia for acute postoperative pain: a qualitative review of randomized trials. *Br J Anaesth.* 2010;104:401–406.
36. Moore RA, Mhuirheartaigh RJN, Derry S, McQuay HJ. Mean analgesic consumption is inappropriate for testing analgesic efficacy in post-operative pain: analysis and alternative suggestion. *Eur J Anaesthesiol.* 2011;28:427–432.
37. Altman DG, Royston P. The cost of dichotomising continuous variables. *BMJ.* 2006;332:1080.
38. Brinck ECV, Maisniemi K, Kankare J, Tielinen L, Tarkkila P, Kontinen VK. Analgesic effect of intraoperative intravenous S-ketamine in opioid-naïve patients after major lumbar fusion surgery is temporary and not dose-dependent: a randomized, double-blind, placebo-controlled clinical trial. *Anesth Analg.* 2021;132:69–79.

550

551

552



CONSORT 2010 checklist of information to include when reporting a randomised trial*

Section/Topic	Item No	Checklist item	Reported on page No
Title and abstract	1a	Identification as a randomised trial in the title	1
	1b	Structured summary of trial design, methods, results, and conclusions (for specific guidance see CONSORT for abstracts)	2-3
Introduction Background and objectives	2a	Scientific background and explanation of rationale	4
	2b	Specific objectives or hypotheses	4-5
Methods Trial design	3a	Description of trial design (such as parallel, factorial) including allocation ratio	7
	3b	Important changes to methods after trial commencement (such as eligibility criteria), with reasons	-
Participants	4a	Eligibility criteria for participants	7
	4b	Settings and locations where the data were collected	6
Interventions	5	The interventions for each group with sufficient details to allow replication, including how and when they were actually administered	7,9
Outcomes	6a	Completely defined pre-specified primary and secondary outcome measures, including how and when they were assessed	9-10
	6b	Any changes to trial outcomes after the trial commenced, with reasons	-

Sample size	7a	How sample size was determined	10
	7b	When applicable, explanation of any interim analyses and stopping guidelines	-
Randomisation:			
Sequence generation	8a	Method used to generate the random allocation sequence	7
	8b	Type of randomisation; details of any restriction (such as blocking and block size)	7
Allocation concealment mechanism	9	Mechanism used to implement the random allocation sequence (such as sequentially numbered containers), describing any steps taken to conceal the sequence until interventions were assigned	7
Implementation	10	Who generated the random allocation sequence, who enrolled participants, and who assigned participants to interventions	7
Blinding	11a	If done, who was blinded after assignment to interventions (for example, participants, care providers, those assessing outcomes) and how	7
	11b	If relevant, description of the similarity of interventions	-
Statistical methods	12a	Statistical methods used to compare groups for primary and secondary outcomes	10-11
	12b	Methods for additional analyses, such as subgroup analyses and adjusted analyses	-
Results			
Participant flow (a diagram is strongly recommended)	13a	For each group, the numbers of participants who were randomly assigned, received intended treatment, and were analysed for the primary outcome	12
	13b	For each group, losses and exclusions after randomisation, together with reasons	12
Recruitment	14a	Dates defining the periods of recruitment and follow-up	12
	14b	Why the trial ended or was stopped	12
Baseline data	15	A table showing baseline demographic and clinical characteristics for each group	12, table 1

Numbers analysed	16	For each group, number of participants (denominator) included in each analysis and whether the analysis was by original assigned groups	12
Outcomes and estimation	17a	For each primary and secondary outcome, results for each group, and the estimated effect size and its precision (such as 95% confidence interval)	15, table 2
	17b	For binary outcomes, presentation of both absolute and relative effect sizes is recommended	20-21
Ancillary analyses	18	Results of any other analyses performed, including subgroup analyses and adjusted analyses, distinguishing pre-specified from exploratory	-
Harms	19	All important harms or unintended effects in each group (for specific guidance see CONSORT for harms)	21
Discussion			
Limitations	20	Trial limitations, addressing sources of potential bias, imprecision, and, if relevant, multiplicity of analyses	24
Generalisability	21	Generalisability (external validity, applicability) of the trial findings	25
Interpretation	22	Interpretation consistent with results, balancing benefits and harms, and considering other relevant evidence	25
Other information			
Registration	23	Registration number and name of trial registry	6
Protocol	24	Where the full trial protocol can be accessed, if available	1,6
Funding	25	Sources of funding and other support (such as supply of drugs), role of funders	8