

1 The burden of nosocomial covid-19: results from the Wales multi-  
2 centre retrospective observational study of 2518 hospitalised adults.

3  
4 **Authors**

5 Mark J Ponsford, BMBCh MSc, Clinician Scientist <sup>1,2</sup>  
6 Rhys Jefferies, MSc, National Respiratory Health Programme Manager<sup>3</sup>  
7 Chris Davies, MB BS, BSc (Hons), MRCS, Professor <sup>4</sup>  
8 Daniel Farewell, PhD, Reader in Statistics <sup>5</sup>  
9 Ian R. Humphreys, PhD, Professor and Wellcome Trust Senior Research Fellow <sup>1,6</sup>  
10 Stephen Jolles, BMBCh MSc PhD, Professor and Consultant Immunologist <sup>2</sup>  
11 Sara Fairbairn, MBBCh, Consultant Respiratory Medicine <sup>3,7</sup>  
12 Keir Lewis, MBBCh MD, Senior Lecturer and Consultant Respiratory Physician <sup>8,9</sup>  
13 Daniel Menzies, MBBCh MD, Consultant Respiratory Medicine <sup>10</sup>  
14 Amit Benjamin, MBBCh, Consultant Respiratory Medicine <sup>11</sup>  
15 Favas Thaivalappil, MBBCh, Consultant Respiratory Medicine <sup>12</sup>  
16 Simon Barry, MBBCh PhD, Consultant Respiratory Medicine <sup>3,13\*</sup>  
17 \* Corresponding author, email: [Simon.Barry@wales.nhs.uk](mailto:Simon.Barry@wales.nhs.uk)

18  
19 **Affiliations**

20 <sup>1</sup> Division of Infection and Immunity, School of Medicine, Cardiff University, Cardiff, CF14 4XN  
21 <sup>2</sup> Immunodeficiency Centre for Wales, University Hospital of Wales, Cardiff, CF14 4XW  
22 <sup>3</sup> Respiratory Health Implementation Group, Swansea University, SA2 8PP.  
23 <sup>4</sup> Institute for Clinical Science and Technology, Cardiff, CF11 9LJ.  
24 <sup>5</sup> Division of Population Medicine, School of Medicine, Cardiff University, Cardiff, CF14 4XN  
25 <sup>6</sup> Systems Immunity Research Institute, Cardiff University, Cardiff, CF14 4XN  
26 <sup>7</sup> Department of Respiratory Medicine, Aneurin Bevan University Health Board, NP44 8YN.  
27 <sup>8</sup> Department of Medicine, Prince Philip Hospital, Hywel Dda University Health Board, SA14 8QF  
28 <sup>9</sup> College of Human & Health Sciences, Swansea University, SA2 8PP.  
29 <sup>10</sup> Department of Respiratory Medicine, Betsi Cadwaladr University Health Board, LL18 5UJ  
30 <sup>11</sup> Department of Respiratory Medicine, Cwm Taf University Health Board, CF72 8XR  
31 <sup>12</sup> Department of Respiratory Medicine, Swansea Bay University Health Board, SA6 6NL  
32 <sup>13</sup> Department of Respiratory Medicine, Cardiff and Vale University Health Board, CF 14 4XW

35 Abstract

36

37 **Objectives** – To define the burden of nosocomial (hospital-acquired) novel pandemic coronavirus  
38 (covid-19) infection among adults hospitalised across Wales.

39 **Design** - Retrospective observational study of adult patients with polymerase chain reaction (PCR)-  
40 confirmed SARS-CoV-2 infection between 1<sup>st</sup> March – 1<sup>st</sup> July 2020 with a recorded hospital admission  
41 within the subsequent 31 days. Outcomes were collected up to 20<sup>th</sup> November using a standardised  
42 online data collection tool.

43 **Setting** – Service evaluation performed across 18 secondary or tertiary care hospitals.

44 **Participants** - 4112 admissions with a positive SARS-CoV-2 PCR result between 1<sup>st</sup> March to 1<sup>st</sup> July  
45 2020 were screened. Anonymised data from 2518 participants were returned, representing over 60% of  
46 adults hospitalised across the nation of Wales.

47 **Main outcome measures** - The prevalence and outcomes (death, discharge) for nosocomial covid-19,  
48 assessed across of a range of possible case definitions.

49 **Results** - Inpatient mortality rates for nosocomial covid-19 ranged from 38% to 42% and remained  
50 consistently higher than participants with community-acquired infection (31% to 35%) across a range  
51 of case definitions. Participants with nosocomial-acquired infection were an older, frailer, and multi-  
52 morbid population than those with community-acquired infection. Based on the Public Health Wales  
53 case definition, 50% of participants had been admitted for 30 days prior to diagnostic testing.

54 **Conclusions** - This represents the largest assessment of clinical outcomes for patients with nosocomial  
55 covid-19 in the UK to date. These findings suggest that inpatient mortality rates from nosocomial-  
56 infection are likely higher than previously reported, emphasizing the importance of infection control  
57 measures, and supports prioritisation of vaccination for covid-19 negative admissions and trials of post-  
58 exposure prophylaxis in inpatient cohorts.

59 **Trial registration** – This project was approved and sponsored by the Welsh Government, as part of a  
60 national audit and quality improvement scheme for patients hospitalised covid-19 across Wales.

61 **Key Messages**

62 *What is already known on this topic*

63 We searched PubMed and ISI Web of Science up until 31-December-2020 for studies reporting on  
64 patient outcomes following hospital-acquired infection due to the severe acute respiratory syndrome  
65 coronavirus 2 (SARS-CoV-2). We identified a range of case-definitions for hospital-acquired infection,  
66 based on timing of diagnostic testing 5 to 15 days following admission. The largest and only multi-  
67 centre study concluded individuals with nosocomial infection are at a lower risk of death from SARS-  
68 CoV-2 than those infected in the community, however, was performed early in the pandemic and  
69 utilised a conservative definition of nosocomial infection.

70 *What this study adds*

71 Our multi-centre observational study represents the largest assessment of clinical outcomes for patients  
72 with nosocomial covid-19 in the UK to date, and suggests the burden of nosocomial SARS-CoV-2  
73 infection has been underestimated. Nosocomial-infection occurred in older, frailer, and multi-morbid  
74 individuals, and was consistently associated with greater inpatient mortality than amongst those who  
75 were infected in the community across a spectrum of case-definitions. Our findings support  
76 implementation of enhanced infection control measures to reduce this burden during future waves,  
77 especially given the recent emergence of novel viral variants with enhanced transmissibility.  
78 Furthermore, roughly half of the patients meeting the Public Health Wales definition of definite  
79 nosocomial SARS-CoV-2 infection had been admitted for 30 days prior to diagnosis, highlighting a  
80 potential window of opportunity for inpatient pre-exposure and/or post-exposure prophylaxis.

81

82 Introduction

83 Health-care-associated infections represent an enduring and serious threat to patient safety in hospital  
84 and healthcare facilities <sup>1,2</sup> and have been estimated to cost the National Health Service £1 billion every  
85 year.<sup>3</sup> The transmission of respiratory viruses such as influenza in the healthcare environment are a well  
86 recognised cause significant morbidity and mortality at the individual patient level,<sup>4</sup> however little is  
87 known regarding the significance of in-hospital (nosocomial) transmission of the novel pandemic  
88 coronavirus, SARS-CoV-2. Such information is essential to assess the effectiveness of recent infection  
89 control measure guidance.<sup>5</sup> A national report published by the Healthcare Safety Investigation Branch  
90 on 29th October 2020 stated: “*At the time of writing, there was no publicly available data to provide*  
91 *evidence of the scale of nosocomial of covid-19 in the NHS*”.<sup>6</sup> In addition, acknowledgement of risk is  
92 timely to inform prioritisation of public health measures such as vaccination of healthcare workers and  
93 vulnerable populations, and decisions regarding continuation of routine NHS service provision.

94 We identified limited studies reporting on the prevalence and outcomes of medical patients’ hospital-  
95 acquired covid-19 within the UK, <sup>7-14</sup> employing a range of case definitions and study design – restricting  
96 generalisability. The largest and only multi-centre cohort study was performed the by COPE (COVID-  
97 19 in Older PEople study) investigators, describing outcomes in 1564 patients admitted with  
98 polymerase chain reaction (PCR)-confirmed SARS-CoV-2 infection across 11 hospitals (including 4 in  
99 Wales) between 27<sup>th</sup> February until 28<sup>th</sup> April 2020.<sup>8</sup> Applying a probabilistic case definition of  
100 nosocomial infection (admitted for at least 15 days before a SARS-CoV-2 diagnosis), Carter et al.  
101 estimated 12.5% contracted covid-19 in hospital. Mortality in the nosocomial patient group appeared  
102 comparable to those with likely community-acquired infection (27.0% and 27.2%, respectively), despite  
103 the older age and higher frailty of these patients.<sup>8</sup> Applying a similar case definition, Taylor et al found  
104 probable nosocomial cases represented 11.3% of confirmed cases within a major London trust admitted  
105 between 6<sup>th</sup> March to 12 April 2020; mortality was unreported in this study.<sup>7</sup> These reports preceded  
106 recognition of high-profile nosocomial outbreaks across several UK hospitals.<sup>15,16</sup> Thus, reliable  
107 estimates of the true impact of hospital-acquired covid-19 infection remain hampered by a paucity of  
108 publicly-available data at national and regional levels.<sup>17</sup>

109 Here, we update assessment of the relative burden of community- relative to nosocomial-acquired  
110 SARS-CoV-2 infection, utilising anonymised patient- and hospital-level data collected via the *National*  
111 *Pathway for Managing Covid-19 Infections in Secondary Care in Wales* initiative. Our primary aim  
112 was to describe inpatient case load and mortality across the nation of Wales in the context of probable  
113 infection source. Our secondary aim was to examine the significance of commonly used differing case  
114 definitions and statistical methodologies when interpreting these findings. Together these findings  
115 suggest that mortality from nosocomial infection may be higher than previously reported, emphasizing  
116 the importance of infection control measures to protect vulnerable inpatient cohorts, and directing  
117 prioritisation of pre- and post-exposure prophylactic measures.

118

119 Methods

120 Study design

121 Data were obtained as part of the National Pathway for Managing Covid-19 Infections in Secondary  
122 Care in Wales initiative ([www.covid-19hospitalguideline.wales.nhs.uk](http://www.covid-19hospitalguideline.wales.nhs.uk)), which collects patient- and  
123 site- level outcomes through the use of an online data collection tool, supporting guideline development  
124 and subsequent audit cycles.

125 Setting

126 In each hospital in Wales a study lead was identified, who coordinated data collection. All 18 major  
127 hospitals in Wales that admitted patients through emergency departments or medical assessment units  
128 were included (Supplementary Table 1).

129 Participants

130 Positive SARS-CoV-2 polymerase chain reaction (PCR) results recorded between 1<sup>st</sup> March 2020 and  
131 1st July 2020 with a record of hospital admission were obtained from Public Health Wales and used to  
132 identify patients for retrospective notes review information by local clinical teams.

133 Data collection

134 Demographic variables with prognostic significance were collected as mandatory data fields for the  
135 index admission using an online tool including: date of positive PCR swab collection, dates of  
136 admission and discharge (when complete), patient age, sex, comorbidity count, and outcome (death or  
137 discharge). Supplementary fields were also collected, as described in the text.

138 Outcomes

139 The primary outcome for analysis was descriptive in nature, with comparison of all-cause mortality rate  
140 and cohort demographics based upon probable origin of SARS-CoV-2 infection. Secondary analyses  
141 based on time to discharge or death were also investigated.

142 Missing data

143 Missing data were included in tables and descriptive analyses, allowing denominators to remain  
144 consistent in calculations. Imputation of missing data was not performed.

145 Bias

146 Notes were selected randomly by site audit/record departments, to minimise potential for systematic  
147 bias prior to data entry.

148 Quantitative variables

149 Frailty was assessed using the pre-admission Clinical Frailty Scale (CFS), as recommended by the  
150 National Institute for Clinical Excellence.<sup>18</sup> For the purposes of the analyses, CFS scores were grouped  
151 into clinically meaningful groups: 1-4, 5-6, and 7-9. Welsh Index of Multiple of Deprivation (WIMD)  
152 was derived from the patients' post-code and evaluated by quartiles.

153 Statistical methods

154 Baseline demographic and clinical characteristics assessed at admission were grouped by outcome and  
155 probable infection origin, based on a) clinician-recorded case definition, b) standardised case definitions  
156 (Supplementary Table 2). Continuous variables are presented as median [inter-quartile range, IQR] and  
157 categorical variables as n (%), unless otherwise stated. Time-to-event data were analysed using  
158 cumulative incidence curves, acknowledging the competing risk of death or discharge. We used time in  
159 hospital following a covid-19 diagnosis as a standard measure to avoid introducing survivorship-bias,  
160 defining day 0 of the at-risk period as the most recent of either admission date or SARS-CoV-2  
161 diagnostic testing.

162 Secondary statistical significance testing was performed according to the data encountered: For  
163 univariate analysis of categorical data, such as sex, Fisher's exact or chi-square testing was performed,  
164 comparing observed numbers for NC cases with numbers predicted by the ratio within the CAC sub-  
165 group. For continuous data, Welch's t-tests were used if the assumptions of normality were met;  
166 otherwise non-parametric Mann-Whitney U tests were employed. Multi-level logistic regression was  
167 used to calculate odds ratios (ORs) and 95% Confidence Intervals (CI), including factors that occurred  
168 before the outcome of interest to preserve causal order. Two-sided statistical significance was set at  $p$   
169  $<0.05$ . Analysis were performed using R version 4.0.2 in RStudio (Version 1.3.959, R Foundation,  
170 Vienna, Austria) with packages including *tidyverse*, and *survival* and GraphPad Prism (version 6.07).

171 Sensitivity analyses were performed to assess the effect of varying the clinical case definition for  
172 nosocomial-acquired infection, and to minimise potential survivorship bias associated with previously-  
173 used case definitions.

174 This project constitutes the evaluation/audit arm of the National Pathway for Managing covid-19  
175 Infections in Secondary Care in Wales and was approved by Welsh Government. Information  
176 governance policies on data protection were followed to record data securely at each site. Anonymised  
177 data handling and storage was supported by The Institute of Clinical Science and Technology, Cardiff  
178 UK.

179 Patient and public involvement: These data were generated as part of a rapid appraisal process and as  
180 such patients were not involved in the setting of the research question or interpretation of the study.  
181 Findings will be disseminated via the [www.covid-19hospitalguideline.wales.nhs.uk](http://www.covid-19hospitalguideline.wales.nhs.uk) tool.

182

183 Results

184 Participants

185 4112 adults hospitalised with a positive SARS-CoV-2 PCR result between 1<sup>st</sup> March to 1<sup>st</sup> July 2020  
186 were screened from which clinical case information on 2594 case records were inputted (Supplementary  
187 Figure 1: Study flowchart). Admission dates ranged from 25<sup>th</sup> March 2019, to 3<sup>rd</sup> July 2020, with the  
188 last recorded discharge on 26<sup>th</sup> October 2020. A total of 76 individuals were excluded from the study  
189 after data screening due to missing primary data fields. Reasons for exclusion were: age < 18 years or  
190 not stated (n=27), admission date missing or incorrectly entered (n=15), date of PCR diagnosis missing  
191 or outside of study period (n=16), and discharge date incorrectly entered (n=3). In addition, 15 cases  
192 where the first PCR result exceeded 31 days of admission or discharge were excluded. This left 2518  
193 patients for analysis with complete case records for primary fields, representing approximately 63% of  
194 the total adult population hospitalised with covid-19 within the nation of Wales. For 10 of the 18  
195 participating sites  $\geq 80\%$  coverage was achieved. Completeness of supplementary data fields was more  
196 varied, with WIMD score available in 95.1% of cases, admission source in 2372 (93.8%), inpatient  
197 ceiling of care decisions in 1976 (78.2%), and CFS in 1316 cases (52.1%).

198 Descriptive data

199 Admission features are summarised by outcome in Table 1. The cohort comprised a relatively elderly  
200 population with a median age of 74 years [IQR 62.5-85.5; range 19-99]. Overall, more men (n= 1369,  
201 54.4%) than women (n=1149, 45.6%) were admitted to hospital with a diagnosis of covid-19, although  
202 this trend was reversed within the under 45 and over 85-year age groups (Table 1; Supplementary Table  
203 3). A deprivation gradient was also apparent, with individuals from the most-deprived (lowest) WIMD  
204 quartile over-represented within admissions (31.1%) relative to those in the least deprived quartile  
205 (18.9%, Chi-squared test:  $p < 0.0001$ ).

206 Table 1: Demographics and clinical features at presentation

207

208 Prevalence and mortality rates by clinician recorded admission source

209 To investigate the impact of covid-19 infection origin on patient outcomes, we first examined mortality  
210 by clinician-defined admission source, available in 2372 cases (93.8%); shown Table 2. Hospital-  
211 acquired covid-19 was documented in 437 cases (17.3% of cohort, 37.8% mortality), comparable to  
212 mortality following ambulance presentation (40.5%). Walk-in and GP referrals together accounted for  
213 20.4% of the cohort and had the lowest estimated inpatient mortality rate (17.1-23.2%), comparable to  
214 patients without a recorded admission source (26.3%). The small number of patients admitted from care  
215 or nursing homes (n=52) showed an inpatient mortality rate of 46.2%.

216

217 Table 2: Patient outcomes by clinician-defined admission source

218



219 Nosocomial covid-19 is associated with greater mortality than community-acquired cases  
220 across a range of standard case definitions

221 We next applied a definition of nosocomial covid-19 reported by the COPE-study investigators and  
222 used by Public Health Wales,<sup>8</sup> based upon an interval exceeding 14 days between admission and SARS-  
223 CoV-2 diagnostic testing (Supplementary Table 1). We identified 413 nosocomial cases, representing  
224 16.4% of the cohort. Most patients (n=1610, 63.9 %) were diagnosed by PCR sampling conducted prior  
225 to or within the first five days of admission date and were defined as community-acquired; 456 patients  
226 (18.1% of total cases) had a positive PCR taken between 5 and 14 days after admission. By end of the  
227 study period, 39.2% of patients with nosocomial-infection had died, compared to a case fatality rate of  
228 31.6% in community-acquired covid-19 cases. This observation of greater mortality amongst NC  
229 patients proved generalisable across the majority of admission sites (Figure 1). The median time from  
230 SARS-CoV-2 diagnosis to discharge in community-acquired covid-19 cases was 7 days (IQR: 3.0-  
231 15.0), compared to 17 days (IQR: 7.0-38.0) in patients with nosocomial-infection. Using this definition,  
232 nosocomial cases had been admitted for a median of 30 days prior to diagnosis (IQR: 15.0-62.5), with  
233 48 patients admitted for over 100 days. The median overall length of stay for patients with nosocomial  
234 infection was 60 days (IQR: 34.0-98.5).

235 Figure 1: Inpatient mortality rates by admission hospital sites

236

237 As 95% of patients will display symptoms between 2 to 11.5 days of exposure,<sup>19</sup> the COPE-study  
238 definition represents a conservative estimate of the burden of nosocomial-cases infection. We therefore  
239 considered the effect on mortality and case numbers by varying the case definition across the incubation  
240 period, taking admission as the earliest potential nosocomial exposure (Supplementary Table 4). As  
241 shown in Figure 2A, inpatient mortality rates for nosocomial covid-19 ranged from 38% to 42% and  
242 remained consistently greater than in patients with community-acquired infection (31% to 34%). By  
243 contrast, varying the case definition resulted in significant changes in case numbers and deaths (Figure  
244 2B/C). Applying the Public Health England case definition (diagnosis of SARS-CoV-2 made >7 days  
245 following admission) identified 727 admissions and 301 deaths. This rose to 830 cases and 342 deaths  
246 when patients with a date of PCR testing >5 days following admission was used to diagnose  
247 nosocomial-covid-19.<sup>20</sup> Together, these findings indicate that whilst changing the case definition for  
248 nosocomial-covid-19 has limited effect on case fatality rates, it significantly alters the number of  
249 reported cases of nosocomial infection and total mortality.

250 Figure 2: Effect of varying case definitions on prevalence and crude mortality rate for  
251 community- and nosocomial- SARS-CoV-2 infection.

252

253 Competing Risk analysis provides differing conclusions to Kaplan Meier

254 Kaplan Meier survival analysis has been utilised by several recent groups to compare outcomes for  
255 hospital and community-acquired covid-19 in UK hospitals to date.<sup>8,9</sup> However, the differing discharge  
256 kinetics observed in patients with nosocomial- and community-acquired covid-19 led us to question the  
257 suitability of this statistical methodology without consideration of the competing risks of discharge to  
258 death. As shown in Figure 3, nosocomial-infection is associated with a greater cumulative incidence of  
259 inpatient mortality than community-acquired, in line with the crude case inpatient mortality rates  
260 described. This contrast with Kaplan Meier analysis (Supplementary Figure 2), confirming the potential  
261 for conflicting interpretations of the same data set when employing different statistical methodologies.

262 Figure 3: Competing risk analysis plot of nosocomial and community infection outcomes of  
263 COVID-19 patients.

264

265 Patients with probable nosocomial COVID-19 infection are a more vulnerable population than  
266 community acquired cases

267 We hypothesized that patients with nosocomial-covid-19 might represent a more vulnerable population,  
268 a finding suggested by previous groups, but potentially confounded by introduction of selection bias  
269 due to the requirement for a prolonged inpatient admission period within the case definition of  
270 nosocomial-SARS-CoV-2 infection. To address this, we explored demographic and clinical  
271 characteristics in patients based on a diagnostic cut-off of 2 days post-admission, a definition commonly  
272 used for hospital-acquired bacterial pneumonia. Individuals with a positive SARS-CoV-2 test taken >2  
273 days following admission were typically older and frailer, with a greater median CFS of 6 (IQR 4.5-  
274 7.5), compared to 3 (IQR 1-5) in those with a positive SARS-CoV-2 test taken up to 2 days following  
275 admission. Marked differences in multi-morbidity were evident, with 35.4% of “nosocomial” patients  
276 having at least 4 comorbidities compared to 26.6% of “community-acquired” patients (Supplementary  
277 Table 5). Together, this supports the hypothesis that age, frailty, and multi-morbidity are factors  
278 associated with hospital-acquired covid-19, and not simply a reflection of the diagnostic definition.

279 Given the apparent vulnerability of the patient cohort developing nosocomial infection, we questioned  
280 if ceiling of care decisions might impact upon patient outcomes. Returning to the COPE-study  
281 definition, ceiling of care decisions were recorded in 1249 (77.6%) of community-acquired and 322  
282 (78.0 %) of nosocomial-acquired covid-19. A ward-based ceiling of care (including consideration of  
283 CPAP or NIV) was documented in 75.3% of nosocomial cases, compared to 58.8% of community-  
284 acquired cases (Fisher’s Exact Test  $p < 0.0001$ , OR: 2.13, 95% CI: 1.58 to 2.87). Put another way, the  
285 odds of a ward level ceiling of care being documented was twice as great in patients with nosocomial-  
286 acquired compared to community-acquired covid-19. To determine the relative importance of this as a  
287 predictor of adverse outcome, we performed logistic regression analysis with the binomial outcome of  
288 death or discharge in nosocomial-acquired cases. In univariate analysis, older age and male sex were  
289 both associated with increased odds of death; OR 1.02 (95% CI: 1.03 to 1.05) and OR 1.56 (95% CI:  
290 1.05 to 2.33), respectively. Recorded ceiling of care at ward level was significantly associated with an  
291 increased risk of mortality: OR 3.20 (95% CI: 1.88 to 5.43) when considered alone, but not following  
292 adjustment for age, sex, index of multiple deprivation and comorbidities OR 1.39 (95% CI: 0.572 to  
293 3.38). Taken together, these observations confirmed our expectation that patient with nosocomial-  
294 acquired SARS-CoV-2 represented a more vulnerable cohort, and as such were less likely to be  
295 managed using more invasive care such as intubation or CPAP. However, we found no evidence that a  
296 ward-level ceiling of care was an independent predictor of mortality.

297 Monthly prevalence of nosocomial covid-19

298 We determined monthly trends for the frequency of total and new nosocomial diagnoses  
299 (Supplementary Table 6). Between March and April 2020, the number of cases meeting the COPE  
300 definition for nosocomial-infection across Wales increased from 97 to 216, paralleling the rise in total  
301 covid-19 admissions. Nosocomial-infection represented 21.0% of new covid-19 diagnoses during May  
302 (73/347 total cases), falling slightly to 18.5% in June. Similar nosocomial infection rates were observed  
303 based on clinician-recorded nosocomial diagnoses, with a monthly prevalence between March to June  
304 of 17.8% and 19.3%.

305

306 Discussion

307 Understanding the risk and burden of covid-19 infection within healthcare environments is essential to  
308 direct risk mitigation strategies for the immediate future. In this work, we analysed a total of 2,518  
309 patients with PCR-proven covid-19 infection admitted to hospitals across Wales. In contrast to previous  
310 studies,<sup>8</sup> reported earlier in the pandemic, inpatient mortality rates were consistently greater in those  
311 who likely acquired the virus in the context of hospital admission (37.9-42.2%), compared to  
312 community-acquired infection (31.4-34.6%) across a range of case definitions. Such heightened  
313 mortality rate estimates are in line with single centre reports from a major London teaching hospital  
314 where definitely or probably hospital-acquired cases had a fatality rate of 36%.<sup>13</sup> Similarly, the monthly  
315 prevalence estimates found in our study are also in line with the 20% modelled for a typical UK  
316 hospital.<sup>21</sup>

317 Our study is also the first to investigate the impact of applying a range of case definitions when  
318 quantifying the burden of hospital-acquired covid-19. By adopting a clinical case definition based on  
319 the median incubation period for SARS-CoV-2 of 5 days,<sup>20</sup> we identified 14.2% additional cases, and  
320 13.6% more deaths attributable to nosocomial covid-19 than with the >7-day threshold currently used  
321 by Public Health England. This increased burden is likely an overestimate but may be relevant given  
322 that even low-risk clinical assessment areas may contain patients with SARS-CoV-2.<sup>22</sup> Thus, in the  
323 absence of sufficient isolation cubicles for patients undergoing assessment and adequately sensitive  
324 rapid turn-around diagnostic testing, the risk of patient-to-patient transmission is likely to persist despite  
325 infection control practices of cohorting and universal screening. We also confirm that patients with  
326 hospital-acquired covid-19 appear a disproportionately vulnerable group, seemingly independent of  
327 diagnostic delay from admission. Advanced age, frailty, and multi-morbidity are well-recognised risk  
328 factors for adverse outcome in community-acquired covid-19.<sup>23,24</sup> We suggest increased frailty is also  
329 likely to be causally associated with an increased personal care requirement and thus predispose to  
330 nosocomial exposure of SARS-CoV-2 from healthcare workers, a conclusion supported by recent  
331 whole-genome sequencing of nosocomial outbreaks.<sup>14</sup> As highlighted in a recent evaluation of serial  
332 PCR screening in healthcare workers, 3% of those attending work tested positive for SARS-CoV-2.<sup>25</sup>  
333 Serological studies suggest the rate of staff infection is far higher on wards with known nosocomial  
334 outbreaks, in studies conducted in hospitals not undertaking staff screening.<sup>26</sup> Finally, we also  
335 considered the impact of ceiling of care on outcome, as few other UK multi-centre studies have explored  
336 this. Importantly, we found no evidence that ceiling of care determined outcome once clinical risk  
337 factors were accounted for, a finding that may be reassuring for patients and families when discussing  
338 this issue.

339 This study is primarily limited by its retrospective nature, which might predispose to ascertainment bias  
340 (for instance, notes being more readily available for patients who have died than awaiting discharge).  
341 This risk is common to other multi-centre studies,<sup>8,23,24</sup> and sites adopted random notes retrieval to  
342 minimise this. We further sought to mitigate this by extending the data collection period well beyond  
343 the end of the first wave, enabling capture of late discharges and including nosocomial outbreaks.  
344 Record entry by a body of motivated clinicians followed a standardised online tool with a limited core  
345 requirement, resulting in minimal missing core data. As a result, coverage exceeded 60% of hospital  
346 admissions with covid-19 across the nation of Wales (and  $\geq 80\%$  in 10 of 18 participating sites). This  
347 compares favourably to recent descriptive studies.<sup>8,23,24</sup> We recognise that our findings represent crude  
348 inpatient mortality rate estimates, based on all-cause mortality. As the total number of patients at risk  
349 of infection was unknown, they should not be used to infer the risk of acquiring SARS-CoV-2 within  
350 hospital. Future studies making use of linked datasets are suggested to estimate excess mortality  
351 associated with nosocomial infection and identify routes of transmission are required. However, with  
352 the NHS facing winter-pressures and further surges in SARS-CoV-2 community circulation rates, our  
353 findings serve as a timely reminder as to the dangers faced by patients within hospital as well as those  
354 within care homes or shielding within the community. This concern is heightened by the spread of a  
355 novel antigenic variant with evidence for enhanced transmissibility<sup>27</sup>

356 Together, our results highlight the burden associated with extremely infectious agents within the  
357 healthcare environment. Although the incidence of nosocomial covid-19 cases decreased significantly  
358 following the peak of community-acquired cases, the importance of enhanced infection control  
359 measures cannot be overstated.<sup>28</sup> Indeed, current Public Health Wales data indicates an active rise in  
360 probable hospital-acquired case numbers, mirroring the first wave.<sup>29</sup> We highlight the opportunity for  
361 pre-exposure and post-exposure prophylactic measures, including vaccination and/or enrolment in  
362 clinical trials employing pharmaceutical and biological antiviral agents such as antibody therapy.<sup>30, 31</sup>  
363 This follows the observation that many of those dying with hospital-acquired covid-19 had typically  
364 been in hospital for over a month prior to diagnosis of infection. Inpatient vaccination has long been  
365 considered a missed opportunity for improving influenza vaccine uptake.<sup>32</sup> Finally, we caution that  
366 research is urgently required to assess the efficacy of vaccination within vulnerable groups of  
367 individuals within hospital and care homes, who are likely to differ from those enrolled in initial trials  
368 in age, frailty, and immunocompetence.<sup>33</sup>

369

370 *Data sharing*

371 Data sharing will be considered by the management group upon written request to the corresponding  
372 author. De-identified participant data or other prespecified data will be subject to a written proposal and  
373 signed data sharing agreement.

374 *Author contributions*

375 SMB conceived the study and worked with RJ and CD to create the covid-19 guideline and the database.  
376 MJP led data analysis supported by DF and wrote the first draft supervised by SB1, DF, SJ, and IH. CD  
377 leads the Institute for Clinical Science and technology which created the digital interventions. MJP, RJ,  
378 CD, and SMB have verified the underlying data and act as guarantors. All authors contributed scientific  
379 and clinical guidance regarding study design, data collection, and have reviewed the final draft. The  
380 corresponding author attests that all listed authors meet authorship criteria and that no others meeting  
381 the criteria have been omitted.

382 *Acknowledgements*

383 This work uses data collected by the NHS and Public Health Wales as part of the routine care and  
384 support for patients admitted with covid-19. We are extremely grateful to the frontline NHS junior  
385 doctors for their commitment to inputting data from across Wales. We further acknowledge Gareth  
386 Davies and Bea Addison from ICST for (Institute of Clinical Science and Technology) for database  
387 management and coordinating the data collection.

388 *Conflict of interest statement*

389 The authors have no conflicts of interest to declare.

390 *Sources of funding*

391 The Welsh Government funds the Respiratory Health Implementation Group (RHIG) of which SB is  
392 the lead and RJ the programme manager. RHIG fund the Institute for Clinical Science and Technology  
393 (ICST) which created the digital interventions including the Welsh Hospital covid-19 guideline and the  
394 on-line data collection tool. This work was partly funded by UKRI/NIHR through the UK Coronavirus  
395 Immunology Consortium (UK-CIC).

396 MJP is supported by the Welsh Clinical Academic Training (WCAT) programme and a Career  
397 Development Award from the Association of Clinical Pathologists and is a participant in the NIH  
398 Graduate Partnership Program. IH is a Wellcome Trust Senior Research Fellow in Basic Biomedical  
399 Sciences.

400 The funders had no role in study design, data collection and analysis, decision to publish, or preparation  
401 of the manuscript.

402

403 Table 1: Demographics and clinical features at presentation

Variable	Died (%)	Discharged (%)	Total (%)
<b>Admission Hospital</b>			2518
A	174 (40.6%)	255 (59.4%)	429 (17.0%)
B	165 (38.8%)	260 (61.2%)	425 (16.9%)
C	97 (39.8%)	147 (60.2%)	244 (9.7%)
D	78 (32.9%)	159 (67.1%)	237 (9.4%)
E	97 (42.9%)	129 (57.1%)	226 (9.0%)
F	46 (27.1%)	124 (72.9%)	170 (6.8%)
G	35 (21.9%)	125 (78.1%)	160 (6.4%)
H	48 (33.3%)	96 (66.7%)	144 (5.7%)
I	19 (22.6%)	65 (77.4%)	84 (3.3%)
J	22 (27.2%)	59 (72.8%)	81 (3.2%)
K	35 (43.2%)	46 (56.8%)	81 (3.2%)
L	24 (32.0%)	51 (68.0%)	75 (3.0%)
M	15 (22.4%)	52 (77.6%)	67 (2.7%)
N	24 (38.1%)	39 (61.9%)	63 (2.5%)
O	6 (25.0%)	18 (75.0%)	24 (0.9%)
P*	2 (25.0%)	6 (75.0%)	8 (0.3%)
<b>Age Group (Years)</b>			
<65	115 (14.7%)	667 (85.3%)	782 (31.1%)
65-75	305 (44.3%)	383 (55.7%)	688 (27.3%)
75-85	275 (50.5%)	270 (49.5%)	545 (21.6%)
>85	192 (38.2%)	311 (61.8%)	503 (20.0%)
<b>Sex</b>			
Female	377 (32.8%)	772 (67.2%)	1149 (45.6%)
Male	510 (37.3%)	859 (62.7%)	1369 (54.4%)
<b>Median comorbidity count (IQR)</b>	3 (2-4)	2 (0.5 to 3.5)	2 (0.5 to 3.5)
<b>Supplementary fields</b>			
<b>WIMD**</b>			
Q1 – most deprived	265 (33.8%)	519 (66.2%)	784 (31.1%)
Q2	251 (37.9%)	411 (62.1%)	662 (26.3%)
Q3	163 (34.4%)	311 (65.6%)	474 (18.8%)
Q4 – least deprived	170 (35.9%)	304 (64.1%)	474 (18.9%)
<i>WIMD unrecorded</i>	38	86	124 (4.9%)
<b>Clinical Frailty Score (CFS)</b>			
1- Very Fit	21 (12.8%)	143 (87.2%)	164 (6.5%)
2- Fit	32 (16.1%)	167 (83.9%)	199 (7.9%)
3- Managing Well	47 (27.2%)	126 (72.8%)	173 (6.9%)
4- Vulnerable	63 (39.9%)	95 (60.1%)	158 (6.3%)
5- Mildly Frail	70 (52.6%)	63 (47.4%)	133 (5.3%)
6- Frail	117 (49.6%)	119 (50.4%)	236 (9.4%)
7- Severely Frail	88 (49.7%)	89 (50.3%)	177 (7.0%)
8- Very severely Frail	36 (62.1%)	22 (37.9%)	58 (2.3%)
9- Terminally Ill	7 (63.6%)	4 (36.4%)	11 (0.4%)
<i>CFS unrecorded</i>	406 (33.6%)	803 (66.4%)	1209 (48.0%)
<b>Ceiling of Care</b>			
Intensive Care	102 (30.0%)	238 (70.0%)	340 (13.5%)
Ward (CPAP)	98 (42.2%)	134 (57.8%)	233 (9.2%)
Ward (no CPAP)	574 (41.1%)	821 (58.9%)	1395 (55.4%)
<i>Ceiling of Care unrecorded</i>	113 (20.5%)	438 (79.5%)	554 (21.9%)
* Represents 3 combined centres (<5 patients each)			
** Welsh Index of Multiple Deprivation (WIMD), 1= most deprived, 1,909= least deprived			



416 Table 2: Patient outcomes by clinician-defined admission source

417

<b><u>Admission Source</u></b>	<b><u>Died (%)</u></b>	<b><u>Discharged (%)</u></b>	<b><u>Total cases (%)</u></b>
<b>Ambulance</b>	554 (40.6%)	810 (59.4%)	1364 (54.2%)
<b>GP Practice</b>	61 (23.4%)	200 (76.6%)	261 (10.4%)
<b>Walk In</b>	43 (17.1%)	209 (82.9%)	252 (10.0%)
<b>Acquired in Hospital</b>	164 (37.7%)	271 (62.3%)	435 (17.3%)
<b>Other/not defined</b>	41 (26.6%)	113 (73.4%)	154 (6.1%)
<b>Care Home</b>	24 (46.2%)	28 (53.8%)	52 (2.1%)

418

419

420

421 Figure 1: Inpatient mortality rates by admission hospital sites  
422 *Scatter plot showing inpatient mortality rates for patients with community-acquired covid-19 (circles);*  
423 *and nosocomial covid-19 (triangles) by individual sites, with hospitals arranged by decreasing overall*  
424 *case load are plotted from the left. For 11/15 sites, inpatient mortality rates for nosocomial cases*  
425 *exceeds that of community acquired cases. Individual sites with fewer than 5 cases were excluded from*  
426 *analysis.*

427

428 Figure 2: Effect of varying case definitions on prevalence and crude mortality rate for  
429 community- and nosocomial- SARS-CoV-2 infection.  
430 *Sensitivity analyses considering the effect on inpatient mortality rate (A), total case numbers (B), and*  
431 *overall mortality burden (C) by varying the case definition across the incubation period, taking*  
432 *admission as the earliest potential nosocomial exposure.*

433

434 Figure 3: Competing risk analysis plot of nosocomial and community infection outcomes of  
435 covid-19 patients.  
436 *Time to event analysis cumulative incidence analysis for the competing risks of discharge and*  
437 *diagnosis, using the time from SARS-CoV-2 diagnosis. covid-19 origin is assigned by the commonly*  
438 *used case definition, as outlined by Carter et al<sup>8</sup>, nosocomial shown in red, community-acquired covid-*  
439 *19- shown in black. Dotted lines: cumulative incidence of death, continuous lines: cumulative incidence*  
440 *of discharge on probability scale. To deal with potential survivorship bias introduced by including CAC*  
441 *patients tested prior to admission (who cannot reach discharge or death until admission), Day 0 is*  
442 *defined as the more recent of day of admission or date of diagnostic SARS-CoV-2 testing.*

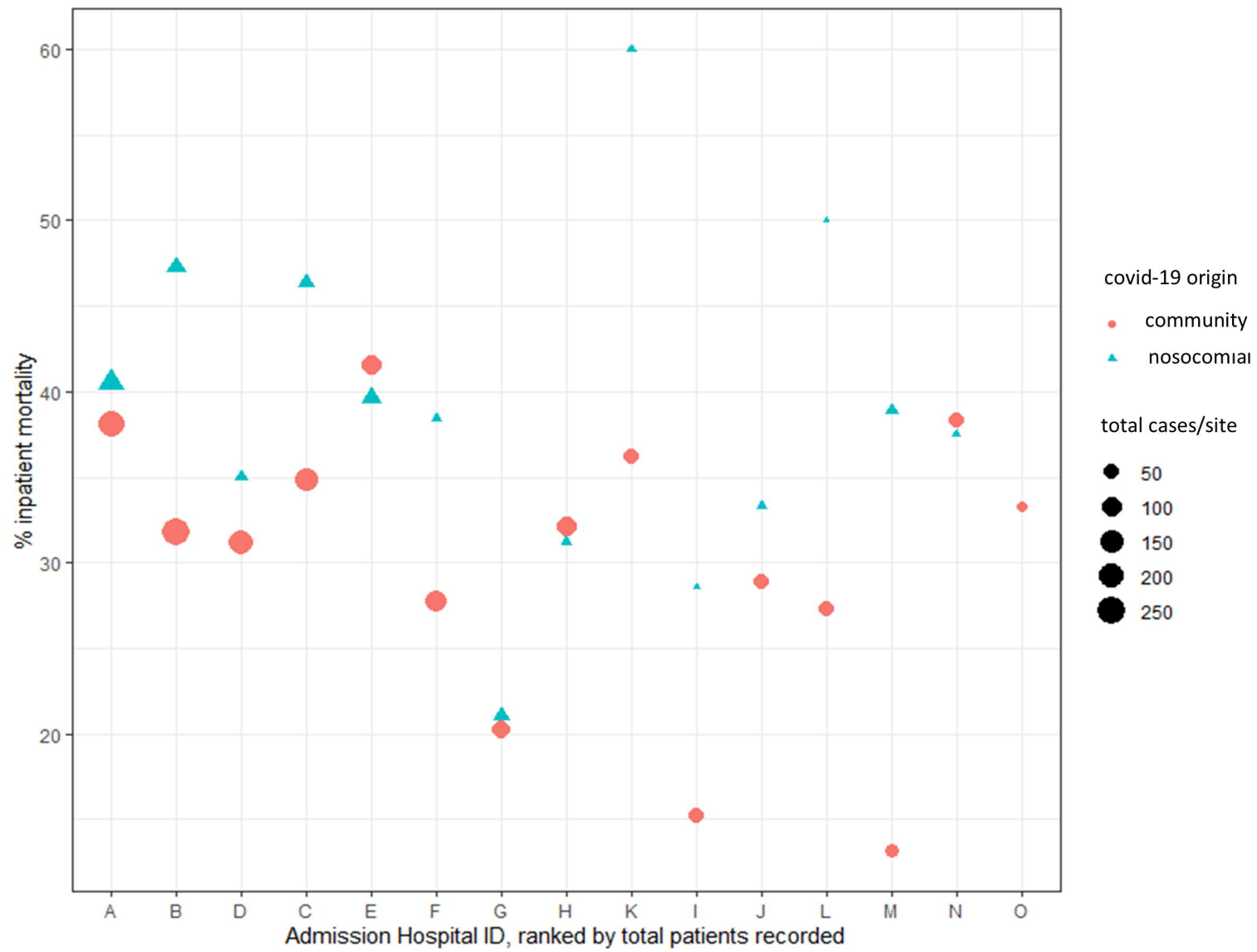
443



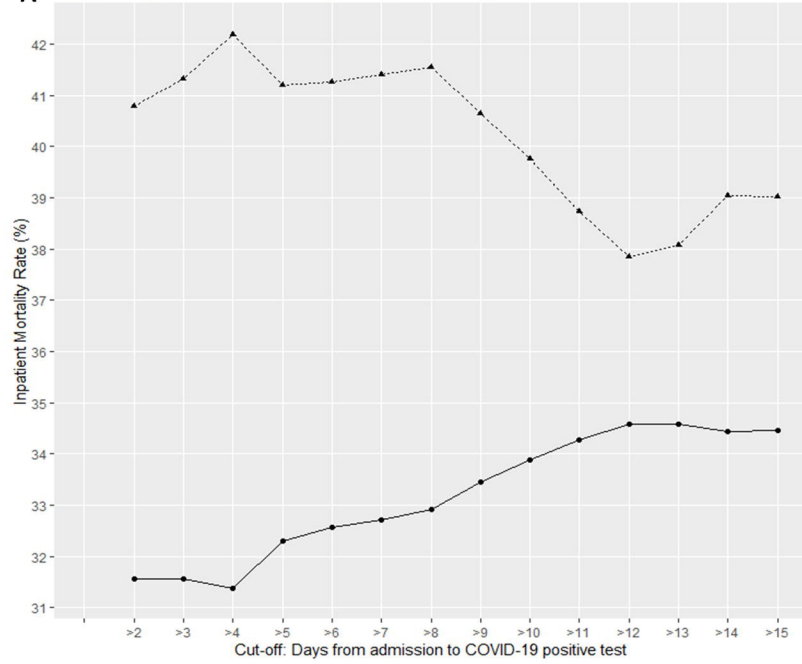
444 References

- 445 1. Burke JP. Infection Control — A Problem for Patient Safety. *New England Journal of Medicine*  
446 2003; **348**(7): 651-6.
- 447 2. Allegranzi B, Nejad SB, Combescure C, et al. Burden of endemic health-care-associated  
448 infection in developing countries: systematic review and meta-analysis. *The Lancet* 2011; **377**(9761):  
449 228-41.
- 450 3. Senior K. Can we keep up with hospital-acquired infections? *The Lancet Infectious Diseases*  
451 2001; **1**: 8.
- 452 4. Godoy P, Torner N, Soldevila N, et al. Hospital-acquired influenza infections detected by a  
453 surveillance system over six seasons, from 2010/2011 to 2015/2016. *BMC Infectious Diseases* 2020;  
454 **20**(1): 80.
- 455 5. NHS England and NHS Improvement. Minimising nosocomial infections in the NHS.  
456 [https://www.england.nhs.uk/coronavirus/wp-content/uploads/sites/52/2020/06/C0586-minimising-](https://www.england.nhs.uk/coronavirus/wp-content/uploads/sites/52/2020/06/C0586-minimising-nosocomial-infections-in-the-nhs.pdf)  
457 [nosocomial-infections-in-the-nhs.pdf](https://www.england.nhs.uk/coronavirus/wp-content/uploads/sites/52/2020/06/C0586-minimising-nosocomial-infections-in-the-nhs.pdf); 2020. Accessed 02-December-2020.
- 458 6. Healthcare Safety Investigation Branch (HSIB). COVID-19 transmission in hospitals:  
459 management of the risk – a prospective safety investigation. Independent report by the Healthcare  
460 Safety Investigation Branch I2020/018. [https://www.hsib.org.uk/documents/257/hsib-report-covid-](https://www.hsib.org.uk/documents/257/hsib-report-covid-19-transmission-hospitals.pdf)  
461 [19-transmission-hospitals.pdf](https://www.hsib.org.uk/documents/257/hsib-report-covid-19-transmission-hospitals.pdf); 2020.
- 462 7. Taylor J, Rangaiah J, Narasimhan S, et al. Nosocomial COVID-19: experience from a large acute  
463 NHS Trust in South-West London. *Journal of Hospital Infection* 2020; **106**(3): 621-5.
- 464 8. Carter B, Collins JT, Barlow-Pay F, et al. Nosocomial COVID-19 infection: examining the risk of  
465 mortality. The COPE-Nosocomial Study (COVID in Older PEople). *Journal of Hospital Infection* 2020;  
466 **106**(2): 376-84.
- 467 9. Khan KS, Reed-Embleton H, Lewis J, Saldanha J, Mahmud S. Does nosocomial SARS-CoV-2  
468 infection result in increased 30-day mortality? A multi-centre observational study to identify risk  
469 factors for worse outcomes in COVID-19 disease. *J Hosp Infect* 2020; **107**: 91-4.
- 470 10. Khonyongwa K, Taori SK, Soares A, et al. Incidence and outcomes of healthcare-associated  
471 COVID-19 infections: significance of delayed diagnosis and correlation with staff absence. *Journal of*  
472 *Hospital Infection* 2020; **106**(4): 663-72.
- 473 11. Wake RM, Morgan M, Choi J, Winn S. Reducing nosocomial transmission of COVID-19:  
474 implementation of a COVID-19 triage system. *Clin Med (Lond)* 2020; **20**(5): e141-e5.
- 475 12. Brill SE, Jarvis HC, Ozcan E, et al. COVID-19: a retrospective cohort study with focus on the  
476 over-80s and hospital-onset disease. *BMC Med* 2020; **18**(1): 194.
- 477 13. Rickman HM, Rampling T, Shaw K, et al. Nosocomial transmission of COVID-19: a retrospective  
478 study of 66 hospital-acquired cases in a London teaching hospital. *Clin Infect Dis* 2020.
- 479 14. Lucey M, Macori G, Mullane N, et al. Whole-genome sequencing to track SARS-CoV-2  
480 transmission in nosocomial outbreaks. *Clin Infect Dis* 2020.
- 481 15. Lintern S. Hospitals battle coronavirus outbreaks as workforce shortages drive cancellation  
482 fears. *The Independent*. 2020 10-OCTOBER-2020.
- 483 16. Clarke O. Hospital Covid infections rise in Wales by 50% in week. *BBC News Online*. 2020.
- 484 17. Iacobucci G. Covid-19: Doctors sound alarm over hospital transmissions. *BMJ* 2020; **369**:  
485 m2013.
- 486 18. National Institute for Clinical Excellence. NICE guideline 159 - COVID-19 rapid guideline: critical  
487 care in adults. [https://www.nice-org-uk.abc.cardiff.ac.uk/guidance/ng159/chapter/1-Admission-to-](https://www.nice.org.uk/abc.cardiff.ac.uk/guidance/ng159/chapter/1-Admission-to-hospital)  
488 [hospital](https://www.nice.org.uk/abc.cardiff.ac.uk/guidance/ng159/chapter/1-Admission-to-hospital); 2020.
- 489 19. Lauer SA, Grantz KH, Bi Q, et al. The Incubation Period of Coronavirus Disease 2019 (COVID-  
490 19) From Publicly Reported Confirmed Cases: Estimation and Application. *Annals of Internal Medicine*  
491 2020; **172**(9): 577-82.
- 492 20. Gupta RK, Marks M, Samuels THA, et al. Systematic evaluation and external validation of 22  
493 prognostic models among hospitalised adults with COVID-19: An observational cohort study. *medRxiv*  
494 2020.07.24.20149815.

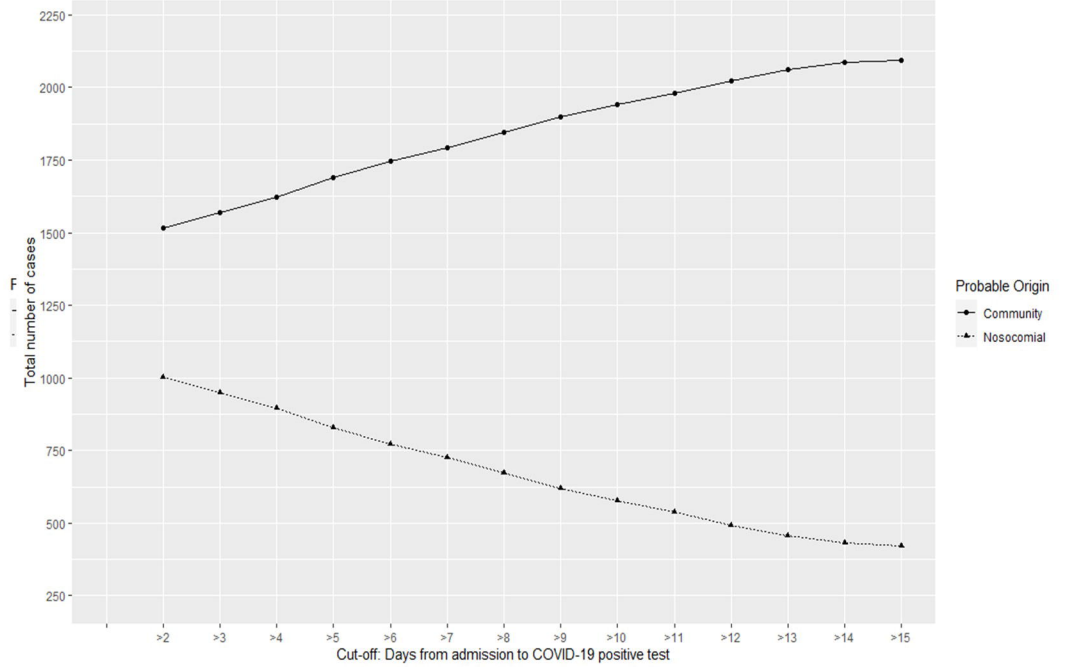
- 495 21. Evans S, Agnew E, Vynnycky E, Robotham JV. The impact of testing and infection prevention  
496 and control strategies on within-hospital transmission dynamics of COVID-19 in English hospitals.  
497 *medRxiv* 2020: 2020.05.12.20095562.
- 498 22. Arif M, Maaref Doost M. Prevalence of COVID-19 Among Typical Ambulatory Care Patients in  
499 a District General Hospital in the United Kingdom. *Cureus* 2020; **12**(11): e11398.
- 500 23. Docherty AB, Harrison EM, Green CA, et al. Features of 20 133 UK patients in hospital with  
501 covid-19 using the ISARIC WHO Clinical Characterisation Protocol: prospective observational cohort  
502 study. *BMJ* 2020; **369**: m1985.
- 503 24. Hewitt J, Carter B, Vilches-Moraga A, et al. The effect of frailty on survival in patients with  
504 COVID-19 (COPE): a multicentre, European, observational cohort study. *The Lancet Public Health* 2020;  
505 **5**(8): e444-e51.
- 506 25. Rivett L, Sridhar S, Sparkes D, et al. Screening of healthcare workers for SARS-CoV-2 highlights  
507 the role of asymptomatic carriage in COVID-19 transmission. *Elife* 2020; **9**.
- 508 26. Jones CR, Hamilton FW, Thompson A, Morris TT, Moran E. SARS-CoV-2 IgG seroprevalence in  
509 healthcare workers and other staff at North Bristol NHS Trust: A sociodemographic analysis. *J Infect*  
510 2020.
- 511 27. Volz E, Mishra S, Chand M, et al. Transmission of SARS-CoV-2 Lineage B.1.1.7 in England:  
512 Insights from linking epidemiological and genetic data. *medRxiv* 2021: 2020.12.30.20249034.
- 513 28. Duy C, Nong VM, Van Ngo A, et al. Nosocomial Coronavirus Disease Outbreak Containment, Hanoi,  
514 Vietnam, March-April 2020. *Emerg Infect Dis* 2021; **27**(1).
- 515 29. Public Health Wales Data Dashboard.  
516 [https://public.tableau.com/profile/public.health.wales.health.protection#!/vizhome/RapidCOVID-](https://public.tableau.com/profile/public.health.wales.health.protection#!/vizhome/RapidCOVID-19virology-Public/Summary)  
517 [19virology-Public/Summary](https://public.tableau.com/profile/public.health.wales.health.protection#!/vizhome/RapidCOVID-19virology-Public/Summary). Last accessed 06-Jan-2021.
- 518 30. Hoy WE, Diwan, V. Trial of ivermectin for treatment and prophylaxis of COVID-19. *BMJ*;  
519 2020;369:m1432.
- 520 31. Libster R, Pérez Marc G, Wappner D, et al. Early High-Titer Plasma Therapy to Prevent Severe  
521 Covid-19 in Older Adults. *New England Journal of Medicine* 2021.
- 522 32. Bratzler DW, Houck PM, Jiang H, et al. Failure to Vaccinate Medicare Inpatients: A Missed  
523 Opportunity. *Archives of Internal Medicine* 2002; **162**(20): 2349-56.
- 524 33. Andrew MK, McElhaney JE. Age and frailty in COVID-19 vaccine development. *The Lancet*  
525 2020; **396**(10267): 1942-4.  
526  
527  
528  
529  
530  
531



**A** Impact of varying case definition on reported inpatient mortality rates



**B** Impact of varying case definition on reported case load



**C** Impact of varying case definition on reported inpatient mortality

