

Validating quantitative PCR assays for cell-free DNA detection without DNA extraction: Exercise induced kinetics in systemic lupus erythematosus patients

Elmo W.I. Neuberger¹, Alexandra Brahmer¹, Tobias Ehlert¹, Katrin Kluge¹, Keito F.A. Philippi¹, Simone C. Boedecker², Julia Weinmann-Menke² and Perikles Simon¹

¹Department of Sports Medicine, University of Mainz, Mainz, Germany. Albert-Schweitzer Str. 22, 55128 Mainz, Germany.

²Department of Rheumatology and Nephrology, University Medical Center Mainz, Germany. Langenbeckstr. 1, 55101 Mainz, Germany.

Supplementary Table S1: Utilized blood collection devices, plastic ware, pipettes and chemicals for the qPCR assays.

Blood collection devices, Plastic ware, and pipettes	Vendor	Cat #
Safety-Lancet: Safety-Lanzette Extra 21G	SARSTEDT	85.1016
Microvette® CB 300 K2E	SARSTEDT	16.444
S-Monovette® 7.5 ml, K3 EDTA, 92x15 mm	SARSTEDT	1605001
Safety-Multifly®-Needle 21G tube 80mm	SARSTEDT	85.1638.203
Filter tips "Avantguard" 10 µl XL, sterile, surface optimized, with extremely fine tip	Axon Labortechnik	23213
FrameStar® 384-well PCR plates (white wells)	Bio-Budget	34-480LC-0384
AMPLIseal™ Transparent adhesive sealer for RT PCR	Greiner Bio-One	676040
Reaction tubes 0.2	Greiner Bio-One	683201
Reaction tubes 0.5	Greiner Bio-One	667201
Reaction tubes 1.5 ml	Greiner Bio-One	616201
ErgoOne® Single-Channel Pipette, 0.1 – 2.5 µl	STARLAB	S7100-0125
Eppendorf Reference® 2 Ein-Kanal, fix, 20 µL	eppendorf	EP4921000060

Chemicals for qPCR	Vendor	Cat #
UltraPure™ DNase/RNase-Free Distilled Water	Invitrogen™	10977049
VELOCITY DNA Polymerase (500 Units)	BioCat	BIO-21099-BL
5x Hi-Fi Buffer (provided with polymerase)	BioCat	
dNTP Mix (40mM Final Conc.)	BioCat	BIO-39043-BL
SYBR Green nucleic acid gel stain 10,000 x	Sigma	C90M1158

Supplementary Table S2: Sequence of the custom made L1PA2 DNA fragment (GRCh38/hg38_ chr4:68,085,016-68,085,410 / size = 395 bp / strand = +)

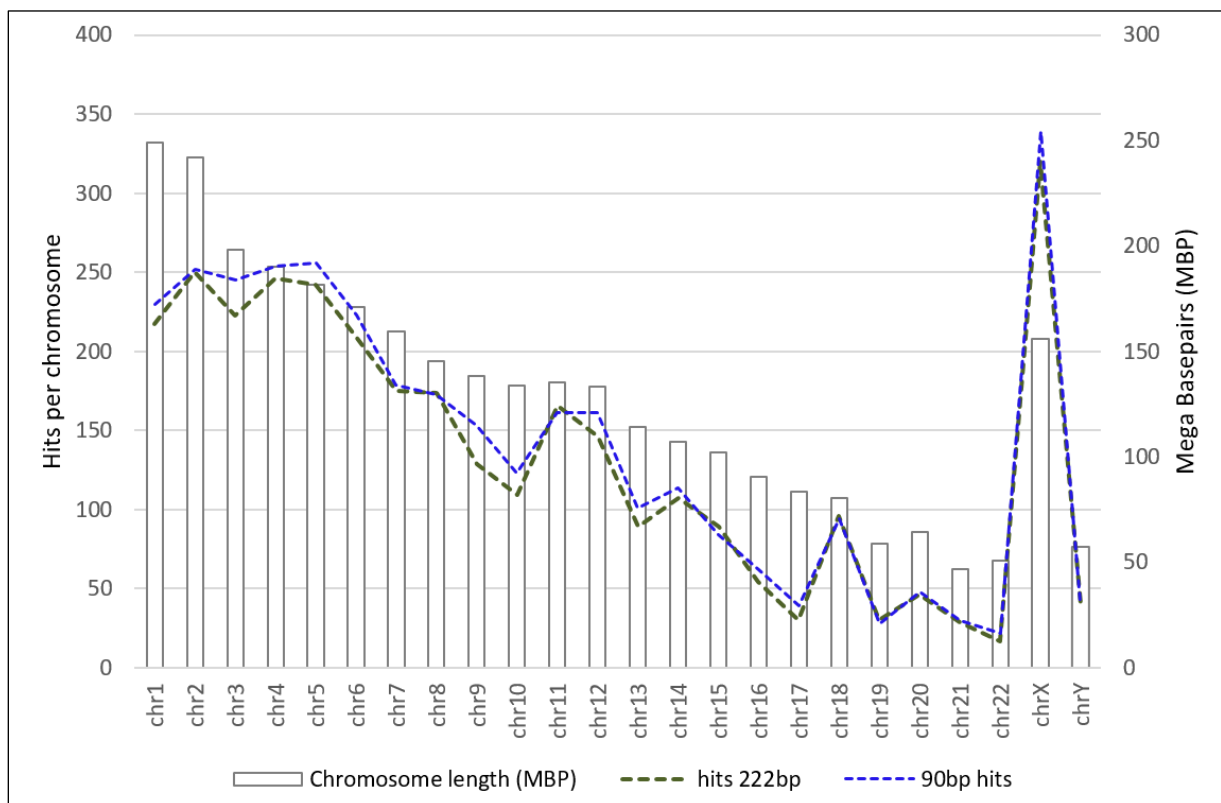
Sequence (5' → 3')
gaattcAGAATGATGATTTCCAATTTTCATCCATGTCCCTACAAAGGACATGAACTCATCAT TTTTTATGGCTGCATAGTATTCCATGGTGTATATGTGCCACATTTTCTTAATCCAGTCT ATCATTGTTGGACATTTGGATTGTTCCAAGTCTTTGCTATTGTGAATAA TGCCGCAAT AAACATACGTG TGCATGTGTCTTTATAGCAGCATGATTTATAGTCATTTGGGTATATAC CCA GTAATGGGATGGCTGGGTC AAATGGTATCTCTAGTTCTAGATCCCTGAGGAATC GCCACACTGACTTCCACAATGGTTGAACTAGTTTACAGTCCCACCAACAGTGTA TGTTCCTATTTCTCCACAT CCTCTCCAGCACCTGTTGT TCCTGACTTgaattc

The binding site for the L1PA2_fw primer is highlighted in grey. The binding sites for the reverse primers of the L1PA2_90bp and L1PA2_222bp assays are highlighted in blue and green, respectively.

Supplementary Table S3: Primer sequences

L1PA2 PCR Primers [0.14 μmol/PCR]	Sequence in 5' → 3'	Amplicon size	Annealing temperature
L1PA2_fw	TGCCGCAATAAACATACGTG	90 bp 222 bp	60.4 °C
L1PA2_90bp_rv	GACCCAGCCATCCCATTAC		61.1 °C
L1PA2_222bp_rv	AACAACAGGTGCTGGAGAGG		63.4 °C

Supplementary Figure S4: Distribution of the hits per chromosome in the human genome (GRCh38/hg38)

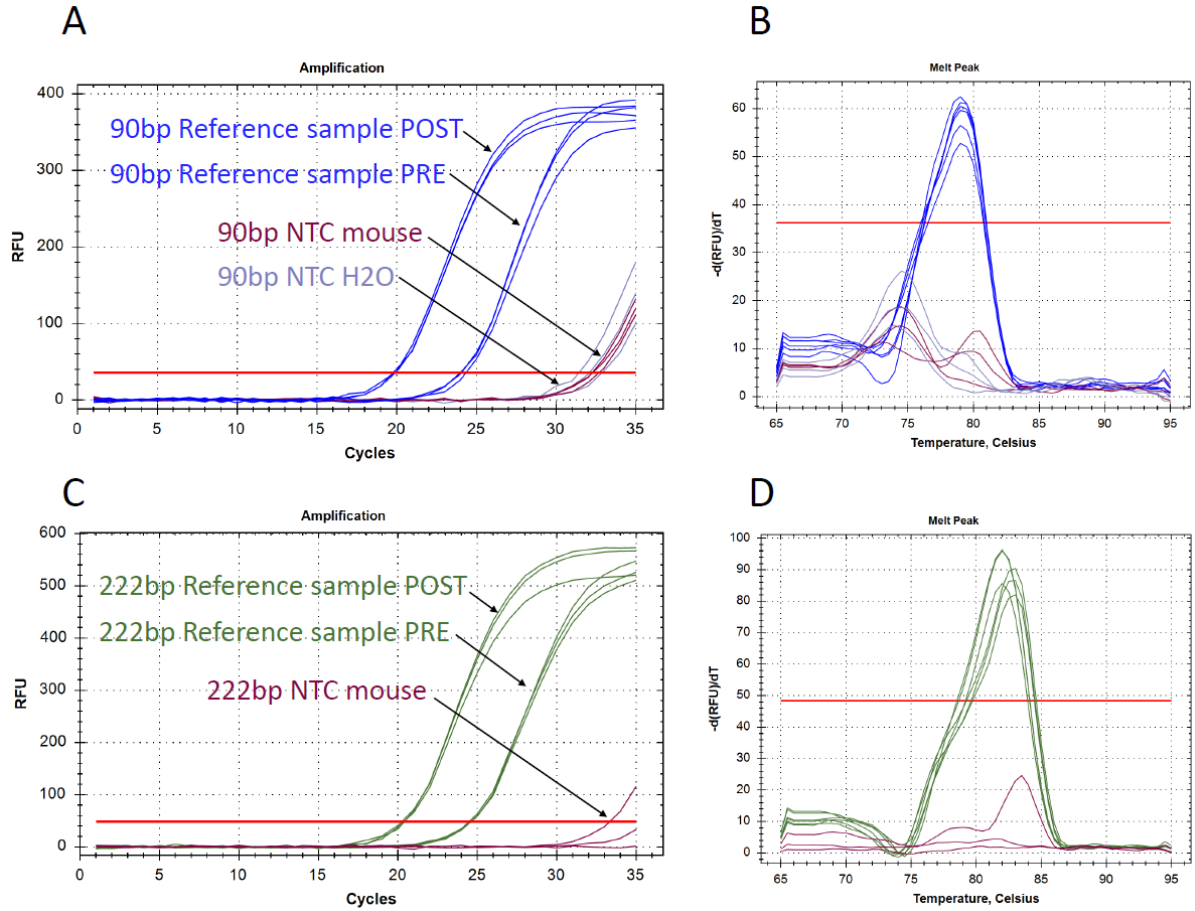


Supplementary Table S5:

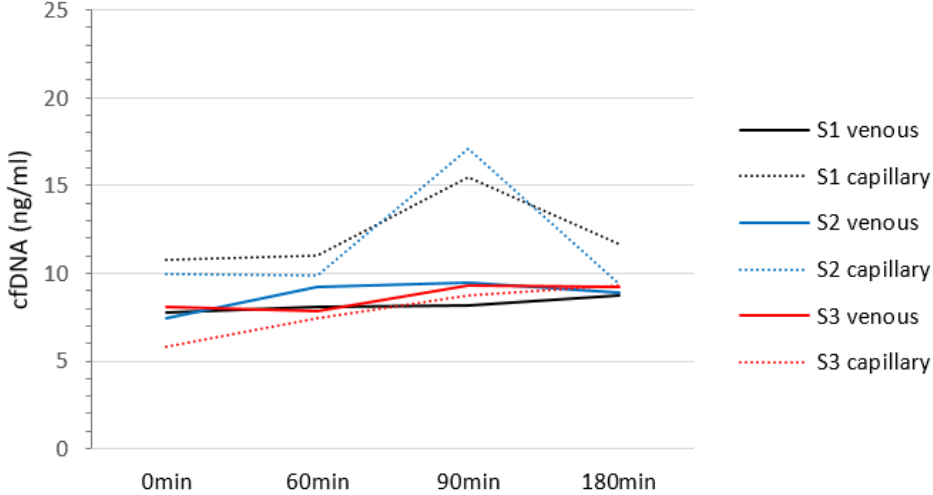
Predicted targets from the *UCSC In-Silico PCR* (length and number) for the L1PA2_fw and L1PA2_222bp_rv primer pair in GRCh38/hg38.

L1PA2_90bp		L1PA2_222bp	
Sequence length	Hits in the Genome	Sequence length	Hits in the Genome
90bp	3338	222bp	2985
89bp	28	221bp	117
91bp	14	223bp	35
92bp	7	220bp	20
88bp	5	219bp	10
87bp	4	224bp	10
68bp	2	226bp	5
79bp	2	228bp	4
321bp	2	212bp	4
96bp	2	227bp	4
330bp	1	218bp	3
422bp	1	213bp	2
94bp	1	210bp	2
278bp	1	200bp	2
186bp	1	217bp	2
76bp	1	209bp	2
97bp	1	204bp	2
260bp	1	240bp	2
86bp	1	230bp	2
81bp	1	216bp	2
95bp	1	232bp	2
Total	3416	197bp	1
		235bp	1
		236bp	1
		225bp	1
		410bp	1
		229bp	1
		215bp	1
		408bp	1
		205bp	1
		392bp	1
		233bp	1
		214bp	1
		242bp	1
		238bp	1
		190bp	1
		211bp	1
		558bp	1
		208bp	1
		203bp	1
		256bp	1
		Total	3237

Supplementary Fig. S6: Typical amplification curves of the reference samples and H₂O or mouse plasma NTCs of the L1PA2_90bp assay (A), and corresponding melt curves (B). Typical L1PA2_222bp amplification curves of the reference samples with NTC (C), and corresponding melt curves (D). RFU = relative fluorescence units.



Supplementary Fig. S7: cfDNA concentrations after extended storage of blood samples.



After prolonged storage of the blood samples before centrifugation (60min, 90 min, or 180 min) the cfDNA concentrations do not differ relevantly in three subjects. Capillary cfDNA samples show a higher variance compared to venous samples.

Supplementary Table S8: Results of the post-hoc comparisons between capillary and venous samples, related to Linear mixed model fit by REML ['lmerMod'].

Formula: $\log_{10}(\text{cfDNA_ng_ml}) \sim \text{Timepoint} * \text{Sample_type} + (1 | \text{Subject})$

Timepoint	Sample_type	response	SE	df	lower.CL	upper.CL
+90 min	capillary	13.6	1.49	44.9	10.0	18.4
POST	capillary	24.8	2.69	43.0	18.3	33.4
PRE	capillary	11.1	1.20	43.0	8.2	14.9
+90 min	venous	14.1	1.53	42.1	10.5	19.0
POST	venous	29.6	3.20	42.1	22.0	39.9
PRE	venous	13.9	1.51	42.1	10.4	18.8

Degrees-of-freedom method: kenward-roger

Confidence level used: 0.95

Conf-level adjustment: sidak method for 6 estimates

Intervals are back-transformed from the log10 scale

\$contrasts

contrast	estimate	SE	df	t.ratio	p.value
(+90 min capillary) - POST capillary	-0.26040	0.0345	130	-7.544	<.0001
(+90 min capillary) - PRE capillary	0.08916	0.0345	130	2.583	0.1089
(+90 min capillary) - (+90 min venous)	-0.01662	0.0342	130	-0.487	0.9966
(+90 min capillary) - POST venous	-0.33834	0.0342	130	-9.906	<.0001
(+90 min capillary) - PRE venous	-0.01128	0.0342	130	-0.330	0.9995
POST capillary - PRE capillary	0.34956	0.0337	130	10.367	<.0001
POST capillary - (+90 min venous)	0.24378	0.0334	130	7.308	<.0001
POST capillary - POST venous	-0.07794	0.0334	130	-2.337	0.1871
POST capillary - PRE venous	0.24912	0.0334	130	7.468	<.0001
PRE capillary - (+90 min venous)	-0.10578	0.0334	130	-3.171	0.0228
PRE capillary - POST venous	-0.42750	0.0334	130	-12.816	<.0001
PRE capillary - PRE venous	-0.10044	0.0334	130	-3.011	0.0362
(+90 min venous) - POST venous	-0.32172	0.0330	130	-9.750	<.0001
(+90 min venous) - PRE venous	0.00534	0.0330	130	0.162	1.0000
POST venous - PRE venous	0.32706	0.0330	130	9.912	<.0001

Note: contrasts are still on the log10 scale

Degrees-of-freedom method: kenward-roger

P value adjustment: tukey method for comparing a family of 6 estimates

Supplementary Table S9: Results of the post-hoc comparisons between capillary samples at all timepoints, related to Linear mixed model fit by REML ['lmerMod'].

Formula: $\log_{10}(\text{cfDNA_ng_ml}) \sim \text{Timepoint} + (1 \mid \text{Subject})$

Timepoint	response	SE	df	lower.CL	upper.CL
+15 min	24.7	2.87	45.8	17.83	34.2
+30 min	22.5	2.63	46.9	16.18	31.2
+60 min	15.1	1.76	46.8	10.86	20.9
+90 min	13.6	1.61	49.1	9.76	18.9
POST	24.8	2.90	46.8	17.87	34.4
PRE	11.1	1.30	46.8	8.00	15.4
RQ	16.5	1.92	45.8	11.92	22.9

Degrees-of-freedom method: kenward-roger

Confidence level used: 0.95

Conf-level adjustment: sidak method for 7 estimates

Intervals are back-transformed from the log10 scale

\$contrasts

contrast	estimate	SE	df	t.ratio	p.value
(+15 min) - (+30 min)	0.04137	0.0382	155	1.082	0.9325
(+15 min) - (+60 min)	0.21461	0.0382	155	5.616	<.0001
(+15 min) - (+90 min)	0.25918	0.0391	155	6.627	<.0001
(+15 min) - POST	-0.00167	0.0382	155	-0.044	1.0000
(+15 min) - PRE	0.34729	0.0382	155	9.088	<.0001
(+15 min) - RQ	0.17489	0.0378	155	4.626	0.0002
(+30 min) - (+60 min)	0.17325	0.0386	155	4.485	0.0003
(+30 min) - (+90 min)	0.21781	0.0394	155	5.530	<.0001
(+30 min) - POST	-0.04303	0.0386	155	-1.114	0.9230
(+30 min) - PRE	0.30593	0.0386	155	7.920	<.0001
(+30 min) - RQ	0.13352	0.0382	155	3.493	0.0109
(+60 min) - (+90 min)	0.04456	0.0395	155	1.128	0.9187
(+60 min) - POST	-0.21628	0.0386	155	-5.601	<.0001
(+60 min) - PRE	0.13268	0.0386	155	3.436	0.0131
(+60 min) - RQ	-0.03972	0.0382	155	-1.040	0.9440
(+90 min) - POST	-0.26084	0.0395	155	-6.601	<.0001
(+90 min) - PRE	0.08812	0.0395	155	2.230	0.2858
(+90 min) - RQ	-0.08429	0.0391	155	-2.155	0.3263
POST - PRE	0.34896	0.0386	155	9.036	<.0001
POST - RQ	0.17655	0.0382	155	4.620	0.0002
PRE - RQ	-0.17240	0.0382	155	-4.512	0.0003

Note: contrasts are still on the log10 scale

Degrees-of-freedom method: kenward-roger

P value adjustment: tukey method for comparing a family of 7 estimates