

## SUPPLEMENTARY MATERIALS

Supplementary Table 1-Proximity ligation *in situ* hybridization (PLISH) primers and probes

Supplementary Table 2-Taqman primers

Supplementary Table 3-SybrGreen primers

Supplemental Figure 1-Negative Control Images for PLISH

Supplemental Figure 2- Additional Aged Mouse Lung Data

Supplemental Figure 3- *Celal*-expressing Cells Over the Course of Mouse Lung Development

Supplemental Figure 4- Identification of *CELA1*-expressing Cells in Human Fetal Lung

Supplemental Figure 5- Identification of CELA1-expressing Cells in Postnatal Human Lung

Supplemental Figure 6- mRNA Levels of Proteases Important in Emphysema

Supplemental Figure 7- Aged Human Lung Western Blot

Supplemental Figure 8-3D-printed Confocal Microscope Lung Stretching Device

Code for Human Lung Cell Atlas analysis

Code for human fetal lung cell analysis

Code for interleukin-1 $\beta$  and mouse lung organoid analysis

# **SUPPLEMENTARY METHODS**

## **Animal Housing**

Animal use was approved by the CCHMC Institutional Animal Use and Care Committee (2017-0064). Mice were housed in a pathogen-free facility with 12-hour light/dark cycles and provided chow and water *ad lib*. Previously generated *Cela1<sup>-/-</sup>* (5) and wild type mice were all on the C57BL/6 background and derived from our existing colony.

## **Porcine Pancreatic Elastase Model of Emphysema**

A single dose of 2 units porcine pancreatic elastase (PPE, Sigma, St. Louis, MO) at a concentration of 10 units/mL diluted in PBS was administered by tracheal instillation as previously described (44) to 8-12 week old C57BL/6 mice anesthetized with isoflurane and tracheally cannulated using an 18 gauge angiocatheter.

## **Aged Mouse Model of Emphysema**

WT and *Cela1<sup>-/-</sup>* mice were collected at age 70-75 weeks for evaluation of age-dependent alveolar simplification.

## **Mouse Lung Tissue Collection and Processing**

At predetermined time points, mice were anesthetized with 0.2 mL of ketamine/xylazine/acepromazine and sacrificed by exsanguination. The left lung was ligated before inflation and used for protein and RNA analysis, and the right lung inflated at 25 cm H<sub>2</sub>O water pressure with 4% PFA in PBS, fixed,

paraffinized, lobes as previously described (5), and 5  $\mu\text{m}$  sections created.

## **Mouse Lung Morphometry**

Using the methods of Dunnill (43) on five images from each right lung lobe, mean linear intercepts were determined and used for comparisons.

## **CELA1 anti-Sera Generation**

100 micrograms of GEHNLSQNDGTEQYVNVQKIVSHPY (U-7318 in this manuscript, Genscript, Piscataway, NJ) peptide in 1 mL of PBS and 1 mL of Freuds complete adjuvant was administered subcutaneously at multiple sites to a New Zealand female rabbit with a subsequent administration of 100 and then 50 micrograms in incomplete Freunds adjuvant on days 21 and 42. Titers were determined by direct ELISA using CELA1-coated plates and titers of <1:5000 considered positive. 7 mL/kg of blood was collected every 2 weeks by marginal vein catheterization using isoflurane anesthesia.

## **anti-CELA1 Monoclonal Antibody Generation**

CD-1 female mice were immunized with CELA1 peptides (see below) conjugated to CRM197. Each mouse received a primary, subcutaneous immunization of 20 ug of the conjugate with 50% Titermax Gold adjuvant. The mice received subsequent immunizations of 20 ug (day 21) and 10 ug (day 35). Following the day 35 immunization serum samples were obtained and tested for reactivity with CELA1. Based on the results of the serum titration, one mouse was selected for hybridoma production. The mouse received an intravenous immunization of 2 ug of conjugate and three days later the mouse was euthanized and the spleen excised for hybridoma formation with SP2/0.

Supernatants from the resulting hybridomas were tested for reactivity with CELA1 and were

subsequently expanded and cloned. Antibodies from the cloned culture, derived from serum-free medium, was used in the studies reported here.

#### Peptides used for mouse immunization

hCELA1 (30-54)	CGTEAGRNSWPSQISLQYRSGGSRYH
hCELA1 (62-86)	CRQNWVMTAAHCVDYQKTFRVVAGDH
hCELA1 (104-134)	CVVHPYWNSDNVAAGYDIALLRQAQSVTLNSY
hCELA1 (159-183)	CGKTKTNGQLAQTLLQAYLPSVDYAI
hCELA1 (220-244)	CLVNGKYSVHGVTSFVSSRGCNVS

Isotyping was performed using the Iso-Gold Rapid Mouse-Monoclonal Isotyping Kit (BioAssay Works Cat# KSOT03-010)

### **Human Lung Tissue Use**

Human tissue utilized under a waiver from the CCHMC IRB (2016-9641). Emphysematous lung explants from individuals with COPD and *postmortem* specimens from aged individuals with no documented lung disease were obtained from the NHLBI lung tissue research consortium (LTRC). "Healthy" lung specimens from non-lung organ donors were obtained from National Jewish Health Human Lung Tissue Consortium in Denver, Colorado. Flash frozen lung specimens of COPD, non-lung organ donors, and aged lung without known lung disease were obtained from the NIH lung tissue consortium and the National Jewish Health Human Lung Tissue Consortium. Portions of specimens were fixed and sectioned and other portions used for biochemical assays.

### **Biochemical Assays**

Left mouse lungs were ligated and collected prior to inflation and fixation of the right lungs. Protein and RNA was extracted from these specimens and used for Western Blot and PCR. Protein and RNA was similarly extracted from human lung specimens but additionally homogenized lung specimens were analyzed using Enzcheck elastase, gelatinase, and proteinase assays (Thermo Fisher E12056, E12055, E6639).

### **Enzyme-linked Immunoassay (ELISA)**

96 well clear bottom plates (Corning) were coated with 20 ug/mL recombinant mCela1, hCELA1, or peptide and incubated at 4°C overnight. After washing, hybridoma supernatants or antibody preparations were incubated for 1 hour at room temperature, washed, and a donkey anti mouse peroxidase conjugated secondary antibody used for detection using TMB. Absorbance at 450 nm was determined using a Spectramax photometer.

### **Enzymatic Assays**

Frozen human lung specimens were homogenized in RIPA buffer and protein content quantified. Ten  $\mu\text{g}$  of protein was used for Enzcheck elastase, gelatinase, and proteinase assays per manufacturer instructions using a Molecular Devices Spectramax M2 plate reader using 4-hour readings for comparisons.

### **Proximity Ligation *in situ* Hybridization (PLISH)**

Using oligos in Supplementary Table 1 and previously published methods (45), PLISH for mouse and human *CELA1* and mouse *Surfactant protein B* mRNA was performed. Briefly, sections were incubated with right and left sided oligonucleotides, then linking oligonucleotides, ligation performed with T4 DNA

ligase (New England Biolabs, M0202L). The sequences amplified by rolling circle amplification using Phi29 polymerase (New England Biolabs M0269L), and these oligos detected using a detection oligonucleotide. DAPI counterstaining was performed and sections imaged on a Nikon NiE microscope.

**Supplemental Table 1: PLISH Primers, Bridges, and Probes**

<u>Name</u>	<u>Sequence</u>
MsCela1_705_L243	TAGCGCTAACAACTTACGTCGTTATGAAGTCATGGGGCTGTCCACA
MsCela1_705_L742	TAGCGCTAACAACTTACGTCGTTATGTTCTGGCGACATTACAGCC
MsCela1_705_L130	TAGCGCTAACAACTTACGTCGTTATGTGAGACGGCCAAGAGTTCCT
MsCela1_705_L552	TAGCGCTAACAACTTACGTCGTTATGTATAGGACACGCTGGGCAGG
MsCela1_705_L100	TAGCGCTAACAACTTACGTCGTTATGTTTGCCCCAGATACCAAGAC
MsCela1_705_R243	CTCTCCGACAACCACTCGATTTATACGTCGAGTTGAACGTCGTAACA
MsCela1_705_R742	CTCTGGTGAAGACGGTGGGCTTATACGTCGAGTTGAACGTCGTAACA
MsCela1_705_R130	ACTGGTACTGGAGGGAAATCTTATACGTCGAGTTGAACGTCGTAACA
MsCela1_705_R552	AGAGGAGCTGGAGCAGATGCTTATACGTCGAGTTGAACGTCGTAACA
MsCela1_705_R100	CTTTTCATTAACCCCCACCTTATACGTCGAGTTGAACGTCGTAACA
MsSftpb_594_L211	TTAGTAGGCGAACTTACGTCGTTATGATCATGCCCTTCCTCCTGGC
MsSftpb_594_L1129	TTAGTAGGCGAACTTACGTCGTTATGTCTCTGGAGCCATCTTCATG
MsSftpb_594_L808	TTAGTAGGCGAACTTACGTCGTTATGTTTACAGACTTCCACCGGTT
MsSftpb_594_L1398	TTAGTAGGCGAACTTACGTCGTTATGTGCTCGCTCACTCGGGGCTA
MsSftpb_594_L362	TTAGTAGGCGAACTTACGTCGTTATGTTTGCTACTCATGTCCATTT
MsSftpb_594_R211	GAATCGGACTCGGAACCAGTTTATACGTCGAGTTGAACATAAGTGCG
MsSftpb_594_R1129	AGCCTCAAGACTAGGGATGCTTATACGTCGAGTTGAACATAAGTGCG
MsSftpb_594_R808	CGTAGGAGAGACACCTTTCCTTATACGTCGAGTTGAACATAAGTGCG
MsSftpb_594_R1398	GAAAAGGTAGCGATGGTGTCTTATACGTCGAGTTGAACATAAGTGCG
MsSftpb_594_R362	GGACTCTCCATCAGGACCTCTTATACGTCGAGTTGAACATAAGTGCG
HuCELA1_705_L707	TAGCGCTAACAACTTACGTCGTTATGTGGACACAAAGCTGGTCACT

HuCELA1_705_L51	TAGCGCTAACAACTTACGTCGTTATGTGGGTGCTGTGCCATAAAG
HuCELA1_705_L228	TAGCGCTAACAACTTACGTCGTTATGTTCTGGTAATCCACGCAGTG
HuCELA1_705_L539	TAGCGCTAACAACTTACGTCGTTATGAGTCCACAGAGGGCAGGTAA
HuCELA1_705_L458	TAGCGCTAACAACTTACGTCGTTATGAGCAGGGACTGTTGTTAGCC
HuCELA1_705_R707	CTGGACACAAAGCTGGTCACTTATACGTCGAGTTGAACGTCGTAACA
HuCELA1_705_R51	CATTGGTTTCCGGAAGGTCCTTATACGTCGAGTTGAACGTCGTAACA
HuCELA1_705_R228	CAGCCACCACGCGGAAAGTCTTATACGTCGAGTTGAACGTCGTAACA
HuCELA1_705_R539	GGAGCTGGAGCAGATGGCGTTTATACGTCGAGTTGAACGTCGTAACA
HuCELA1_705_R458	CTTGCCCCAGCCTGTGATGTTTATACGTCGAGTTGAACGTCGTAACA
MsNeg control 705 1	TAGCGCTAACAACTTACGTCGTTATGTTATAACCGTGCTTCTTTCA
MsNeg control 705 2	TAGCGCTAACAACTTACGTCGTTATGATCCATGCCTGTTTTACAGA
MsNeg control 705 3	CTTCAGATACGCCATGATTCTTATACGTCGAGTTGAACGTCGTAACA
MsNeg control 705 4	ATGCTTTCATTTACACAGATTTATACGTCGAGTTGAACGTCGTAACA
Common Connector- AF594	TCGCCTACTAAACAAAGAACCTCCATTAACATCGCAACAACAATACACACGCACTT ATGT
Common Connector- Tye705	TGTTAGCGCTAACAAAATGCTGCTGCTGTACTACGAACAACAATACACATGTTACGA CGT
Common Bridge	TCAACTCGACGTAT3A2ACATAACGACGTAAGT
AF594 Probe	AF594-AGAACCTCCATTAACATCGC
Tye705 Probe	Tye705-ATGCTGCTGCTGTACTACG

## Immunofluorescence

Human lung sections were incubated overnight with 1:500 dilution rabbit anti-CELA1 and 1:500 guinea pig anti-SCGB1A1 antibodies (gift of Jeffrey Whitsett) in 5% donkey serum with subsequent incubation with 1:5000 fluorophore-conjugated secondary antibodies, counterstained with DAPI, and mounted in prolong gold. Images were obtained using a Nikon NiE microscope.

## **Immunohistochemistry**

Human lung sections were immunostained for CELA1 using anti-CELA1 guinea pig antibody (?) with secondary alone control using the ABC Vectastain kit (Vector Labs, Burlingame, CA). 4X tile scanned and 20X images were obtained using a Nikon 90i inverted microscope. Using Nikon elements software, the number of Celal1-positive cells per lung section were morphometrically determined in 4x tile scanned sections.

## **Western Blot**

Mouse lung homogenates were electrophoretically separated, transferred to PVDF membranes, and total protein quantified using a total protein stain (LICOR, 926-11011). Blots were immunostained with anti-CELA1 guinea pig antibody (1:5,000 dilution) and anti-tropoelastin antibody (ab21600, Abcam, 1:5,000 dilution), anti-p16INK (Sigma SAB45000-72, 1:500), p19ARF antibody (Novus Biologics, NB200-169, 1:500), anti-p21 antibody (Novus Biologics, NBP2-29463, 1:500), anti-p53 antibody (Abcam, ab131442, 1:500) and evaluated by densitometry using an Odyssey system (LI-COR Biotechnology, Lincoln, NE). Fold-change values from total protein (ReVERT 700 Total Protein Stain, LI-COR Biotechnology) normalized values were used for calculations.

## **PCR**

RNA was extracted from lung homogenates using RNEasy Mini columns (Qiagen, Valencia, CA) and cDNA library synthesized using a High Capacity cDNA Reverse Transcriptase Kit (Applied Biosystems, Foster City, CA). For human specimens, Taqman PCR was performed using the primers listed in



Supplemental Table 2 and a QuantStudio6 device (all Applied Biosystems). For mouse specimens Sybr Green PCR was performed using the primers in (Supplemental Table 3) and PowerUp SYBR Green (Applied Biosystems, AB25780).

<b>Supplemental Table 2: Taqman Primers</b>	
<u>Target</u>	<u>Primer Catalog Number</u>
Human Matrix Metalloproteinase-2	4331182_Hs01548727
Human Matrix Metalloproteinase-8	4453320-Hs01029057
Human Matrix Metalloproteinase-9	4453320-Hs00957562_m1
Human Matrix Metalloproteinase-12	4448892-Hs00159178
Human Matrix Metalloproteinase-14	4448892-Hs01037003
Human Proteinase-3	4448892-Hs01553330_m1
Human Neutrophil Elastase	4331182-Hs00236952_m1
Human Chymotrypsin-like Elastase 1	4331182Hs00608115_m1
Human Cathepsin G	4448892-Hs00175195_m1
Eukaryotic 18S RNA	4333760T

<b>Supplemental Table 3: SybrGreen Primers</b>	
<u>Name</u>	<u>Sequence</u>
MsCela1 FL1-Fwd	TTGTCCGAGAGCACAACCTG
MsCela1 FL1-Rev	CCAAGACACCAGCAGCATTC
MsGapdh(66-323) mRNA-Fwd	AGAGTGTTTCCTCGTCCCGT
MsGapdh(66-323) mRNA-Rev	TGATGTTAGTGGGGTCTCGC

## **Human *Ex vivo* Lung Stretch**

Ten mm cores of frozen human lung tissue were created using a coring device and hand-cut 100-200  $\mu$  m sections were cut using a scalpel on dry ice. These sections were mounted onto a silicone mold and then subjected to biaxial stretch or imaged sequentially over time using a previously published 3D-printed confocal microscope-compatible stretching device (5, 6, 10) with Enzcheck elastin zymography substrate (10  $\mu$ g/mL), Texas-Red conjugated albumin (Thermo Fisher A23017, 1  $\mu$ g/mL) and AF647-conjugated CELA1 (1  $\mu$ g/mL) (5). A 100  $\mu$ m Z-stack at 10x magnification was obtained using a Nikon A1 confocal microscope and the signal for each analyte at sequential levels of biaxial stretch were quantified and normalized to tissue autofluorescence. The rate of elastase activity, albumin binding, and CELA1 binding per fold change in area or time equivalent was measured per section and sections assayed in triplicate. The average rate of change per specimen was used for comparisons.

## **Human Genomic Studies**

CELA1 gene variants were downloaded from the Broad Institute (27), dbGAP (28) and Ensembl (46). Functional significance of variants was predicted using SIFT and PolyPhen-2 (30, 31).

## **Statistical Methods**

Using R version 4.0.2 (47), the following packages were used for statistical comparisons and graphics generation: ggpubr (48), gridExtra (49), cowplot (50), ggplotify (51), corrplot (52), and rstatix (53). For parametric data, Welch's t-test and ANOVA with Holm-Sidak *post hoc* test were used, and for non-parametric data, Wilcoxon rank-sum and Kruskal-Wallis with Dunn's *post hoc* test were used. For

correlative analyses, Pearson's correlation with Bonferroni correction for multiple comparisons was used. Parametric data is displayed as line and whisker plots with center line representing mean and whiskers standard deviation. Non-parametric data is displayed as box plots with center line representing median value, boxes representing 25th to 75th percentile range, and lines representing 5th to 95th percentile range. For both plot types dots represent individual data points. For all analyses p-values of less than 0.05 were considered significant.

### **Analysis of Bulk Human Lung Organoid Data**

Datasets from native (22) and induced pluripotent stem cell (23) alveolar type 2 cell organoids infected with SARS-CoV-2 virus and CELA1 expression was expressed using a publicly available webtool (54).

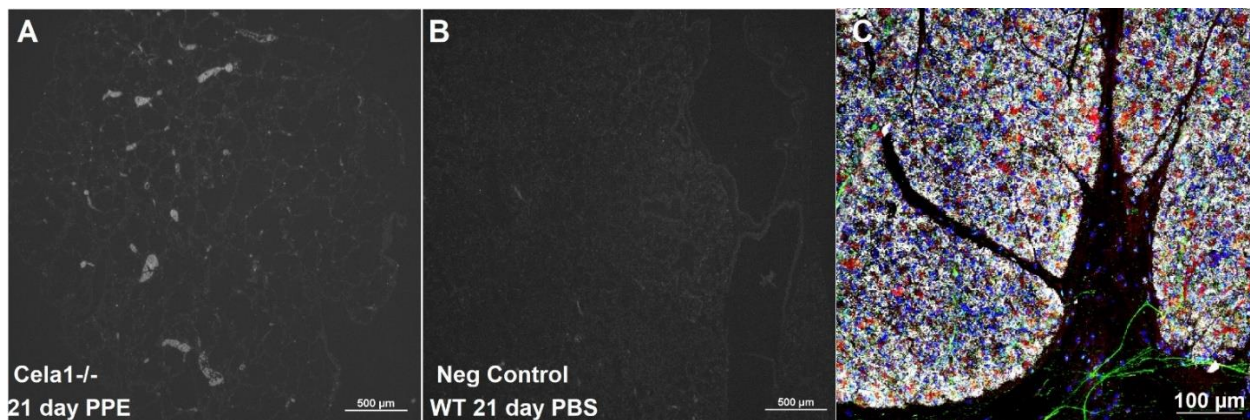
### **Re-analysis of Single Cell Data**

For Human Lung Cell Atlas (55) data, annotated patient data and analysis code was downloaded and modified to remove the 80% cell filtering step and then clustered and analyzed using Seurat (56). Human fetal lung datasets (13) and AT2 cell organoid (15) matrix files were downloaded from Array Express and GEO Datasets respectively and analyzed in Seurat. Human control, COPD, and IPF single cell data (20, 21), mouse lipopolysaccharide lung injury (13), and mouse lung bleomycin single cell data (57) were analyzed using publicly available web tools described in each manuscript (19).

## SUPPLEMENTAL DATA

### Proximity Ligation in situ Hybridization Control Data

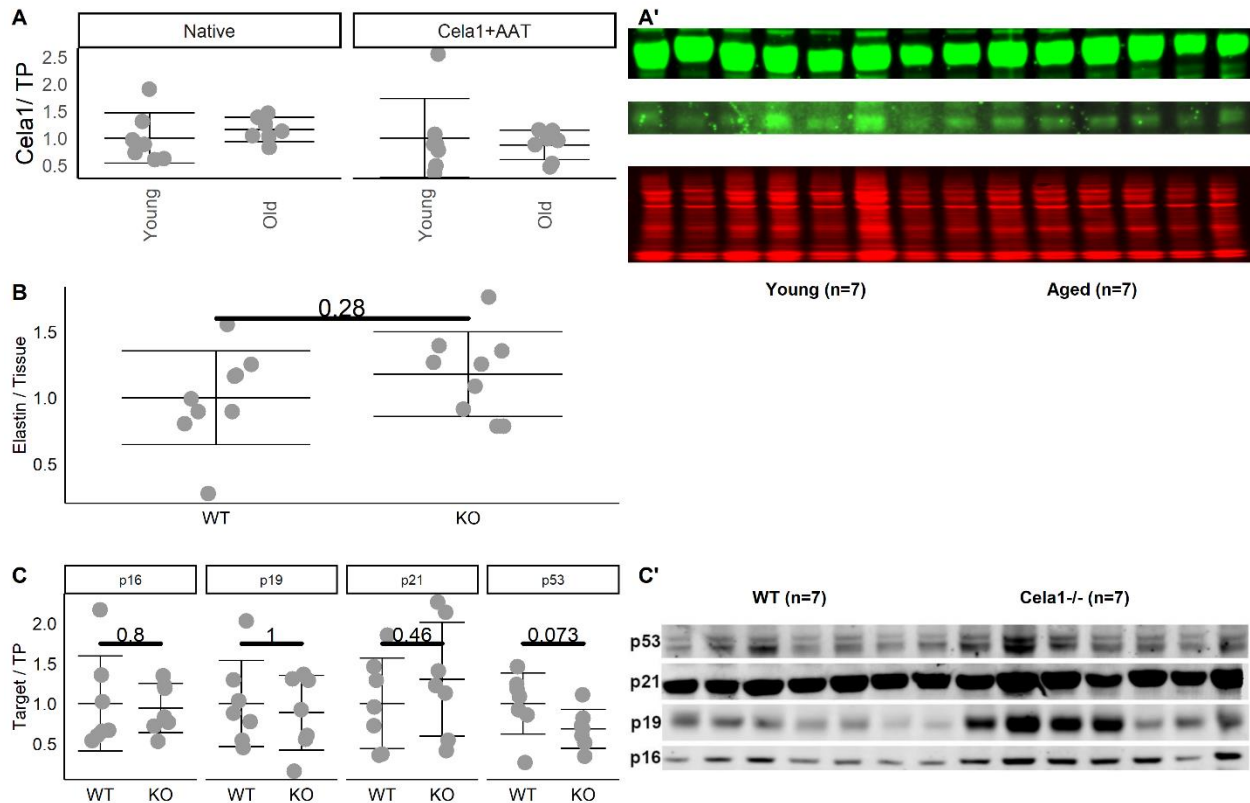
*Cela1* null and bacterial probe control images showed no signal in *Cela1*<sup>-/-</sup> lung probed and stained at the same time as wild-type lung and no signal with bacterial control probes. Wild-type mouse pancreas had abundant *Cela1* mRNA (Figure S1).



Supplemental Figure 1: Negative Control Images for PLISH. (A) *Cela1*<sup>-/-</sup> lung did not demonstrate any *Cela1* mRNA at 21 days post-PPE. (B) A bacterial gene probe did not have any signal in wild type mouse lung at 21 days post-PPE. (C) Mouse pancreas positive control for *Cela1* PLISH (white) and *Cela1* protein (red).

## Aged Mouse Lung Supplemental Data

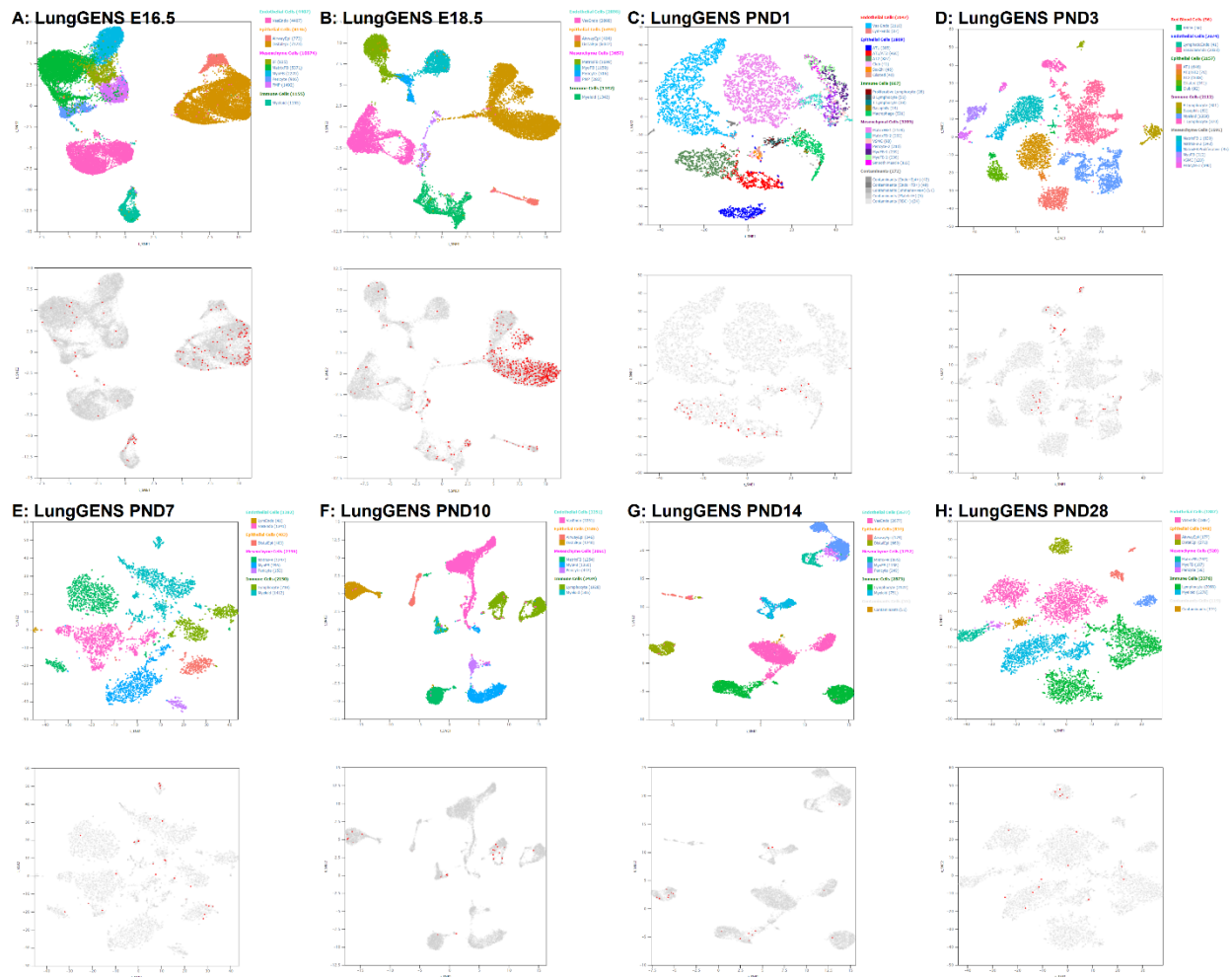
There was no difference in *Cela1* protein levels in aged vs. young WT mice (Supplemental Figure 2A). Quantitative morphometry of Hart stained WT and *Cela1*<sup>-/-</sup> lung specimens showed a trend towards more insoluble elastin in *Cela1*<sup>-/-</sup> lungs (Supplemental Figure 2B). There was no difference in the amount of senescence-related proteins in aged WT and *Cela1*<sup>-/-</sup> lung (Supplemental Figure 2C).



Supplemental Figure 2: Additional Aged Mouse Lung Data. (A) Western blot of young (8-12 week-old) and aged (70-75 week-old) wild type mouse lung revealed no differences in *Cela1* protein levels. (B) Quantitative image analysis of elastin-stained mouse lung issues identified a trend towards increased total lung elastin in aged *Cela1*<sup>-/-</sup> mouse lungs. (C) Quantification of lung senescence proteins showed no differences except for a trend towards reduced p53 in aged *Cela1*<sup>-/-</sup> lung.

## Mouse *Cela1*-expressing Cells During Lung Development

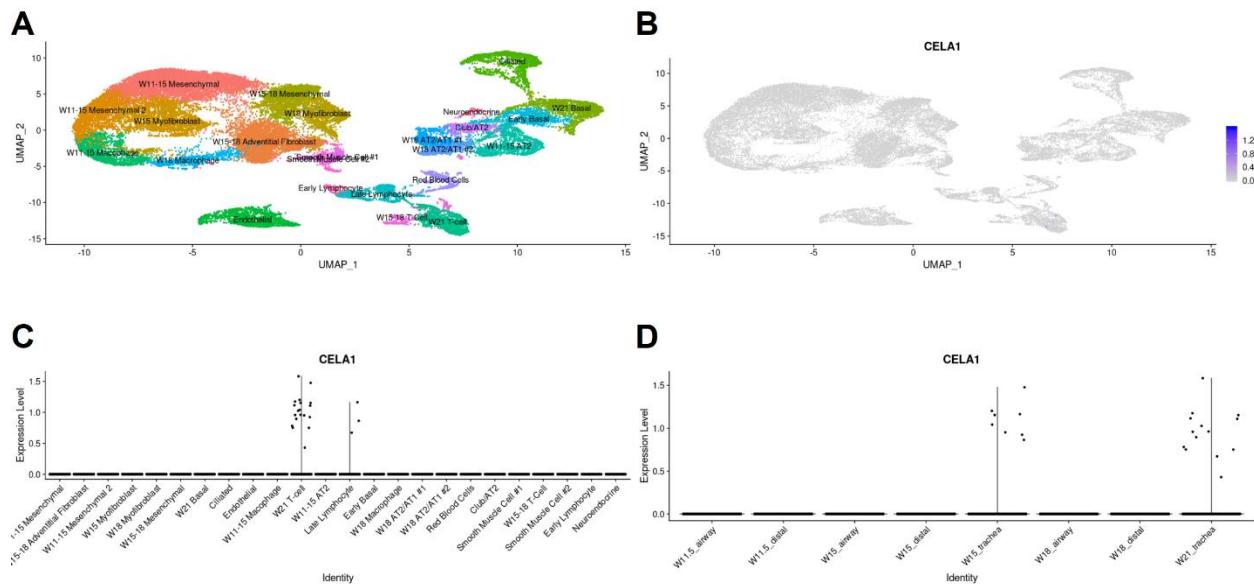
Time course single cell mRNA-Seq data from C57BL/6 mouse lung shows low level expression in distal lung epithelial and immune cells at all time points except E18.5 when an increase in distal lung epithelial expression is notable (Supplemental Figure 3).



Supplemental Figure 3: *Cela1*-expressing Cells Over the Course of Mouse Lung Development. A-H, U-maps and feature plots for *Cela1* of single cell mouse lung data from LungGENS database.

## CELA1 in Human Fetal Lung

In a dataset of tissues from four different human fetal lung specimens (13), *CELA1* mRNA was detected in none of the lung epithelial cells. Only rare lymphocytes had *CELA1* mRNA. Notably, the oldest age specimen with distal lung sampling was 18 weeks of age (Supplemental [Figure 4](#))

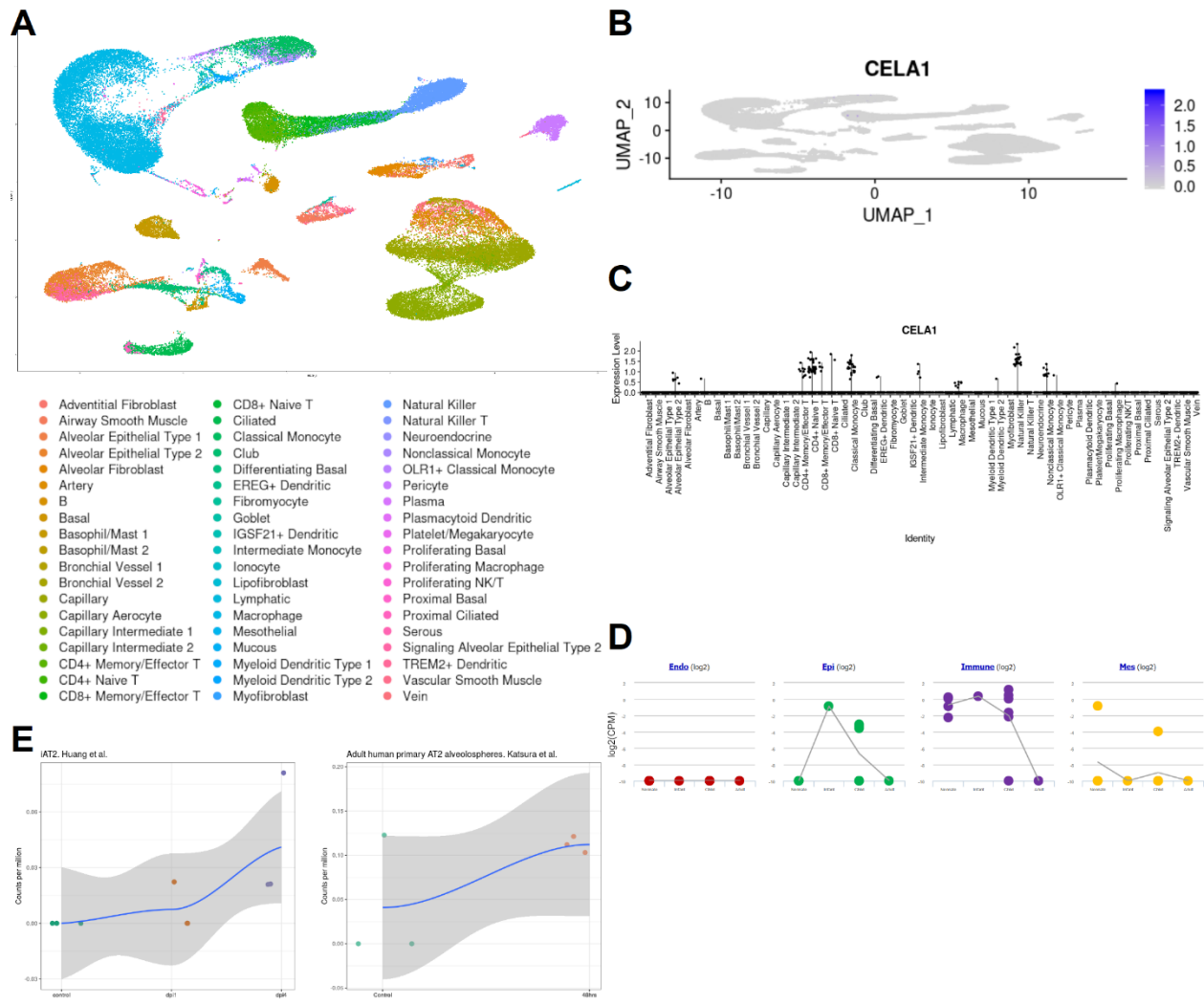


**Supplemental Figure 4:** Identification of *CELA1*-expressing Cells in Human Fetal Lung. (A) U-map of cells from four different specimens with segregation into tracheal, small conducting airway, and distal lung as the specimen allowed. (B) Feature plot with virtually no *CELA1*-expressing cells. (C) Violin plot showing T-cell and lymphocyte *CELA1*-expressing cells in large airways. (D) Violin plot by specimen showing that the cells were only found in the trachea.

## ***CELA1* in Adult Human Lung**

Query of the Human Lung Cell Atlas (55) identified *CELA1* as being only very rarely expressed in adult immune and AT2 cells (Supplemental Figure 5A-C). Query of sorted human lung cells in LungGENS (11) identified *CELA1* transcripts as being elevated in epithelial and immune cells in infant and child lung specimens (Supplemental Figure 5D). Native and induced alveolar type 2 cell organoids showed increased *CELA1* expression after infection with SARS-CoV-2 virus (Supplemental Figure 5E).

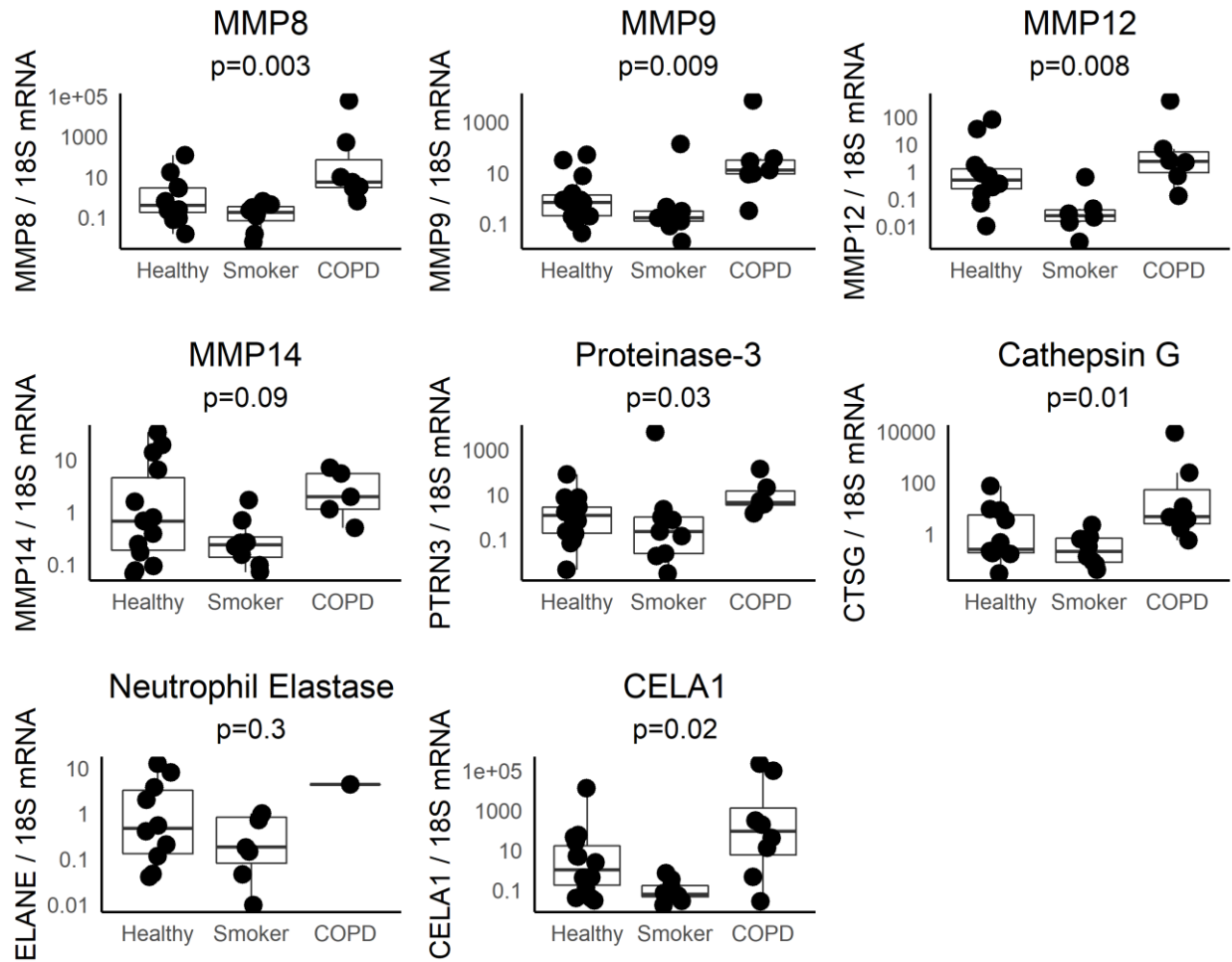




**Supplemental Figure 5: Identification of CELA1-expressing Cells in Postnatal Human Lung.** (A) Human Lung Cell Atlas U-map of datasets without the 80% cell number reduction reported in the original paper. (B) Feature plot for *CELA1* showing very few positive cells. (C) Violin plot showing that the few positive cells are mostly immune cells with a few AT2 cells. (D) mRNA-seq of sorted human lung cells at different ages with each point representing a subject. *CELA1* mRNA levels were higher in immune and AT2 cells during lung development. (E) Human lung organoids created from native AT2 cells or induced pluripotent stem cells express *CELA1* mRNA after infection.

## COPD-Associated Proteases in Human Lung

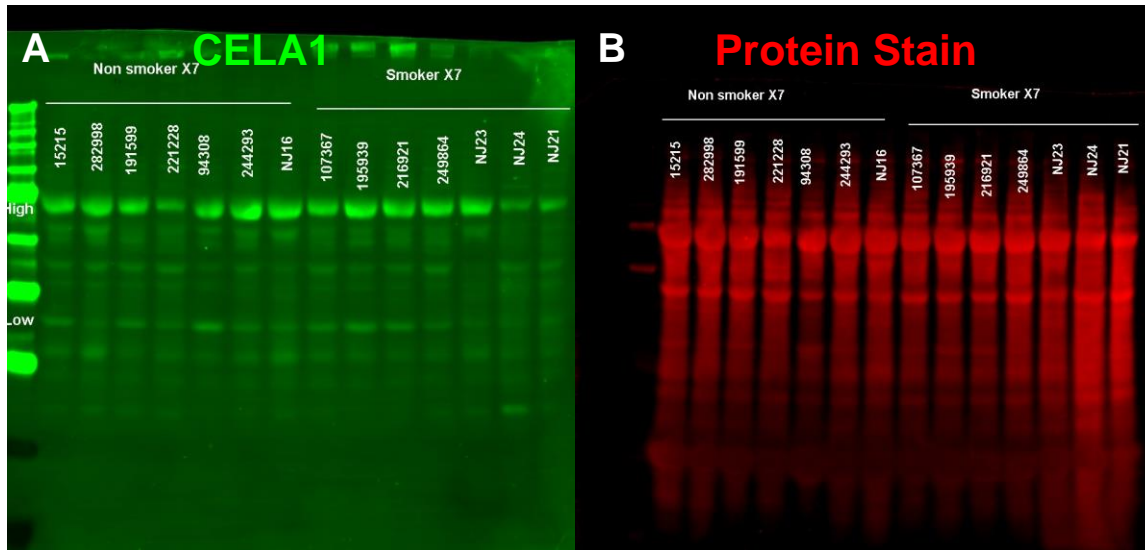
Among the proteases reportedly important in emphysema pathogenesis, the majority were elevated in COPD specimens compared to non-smoker and smoker controls (Supplemental Figure 6).



Supplemental Figure 6: mRNA Levels of Proteases Important in Emphysema. MMP=matrix metalloproteinase. Indicated p-values are by Kruskal-Wallis test.

## Aged Human Lung Supplemental Data

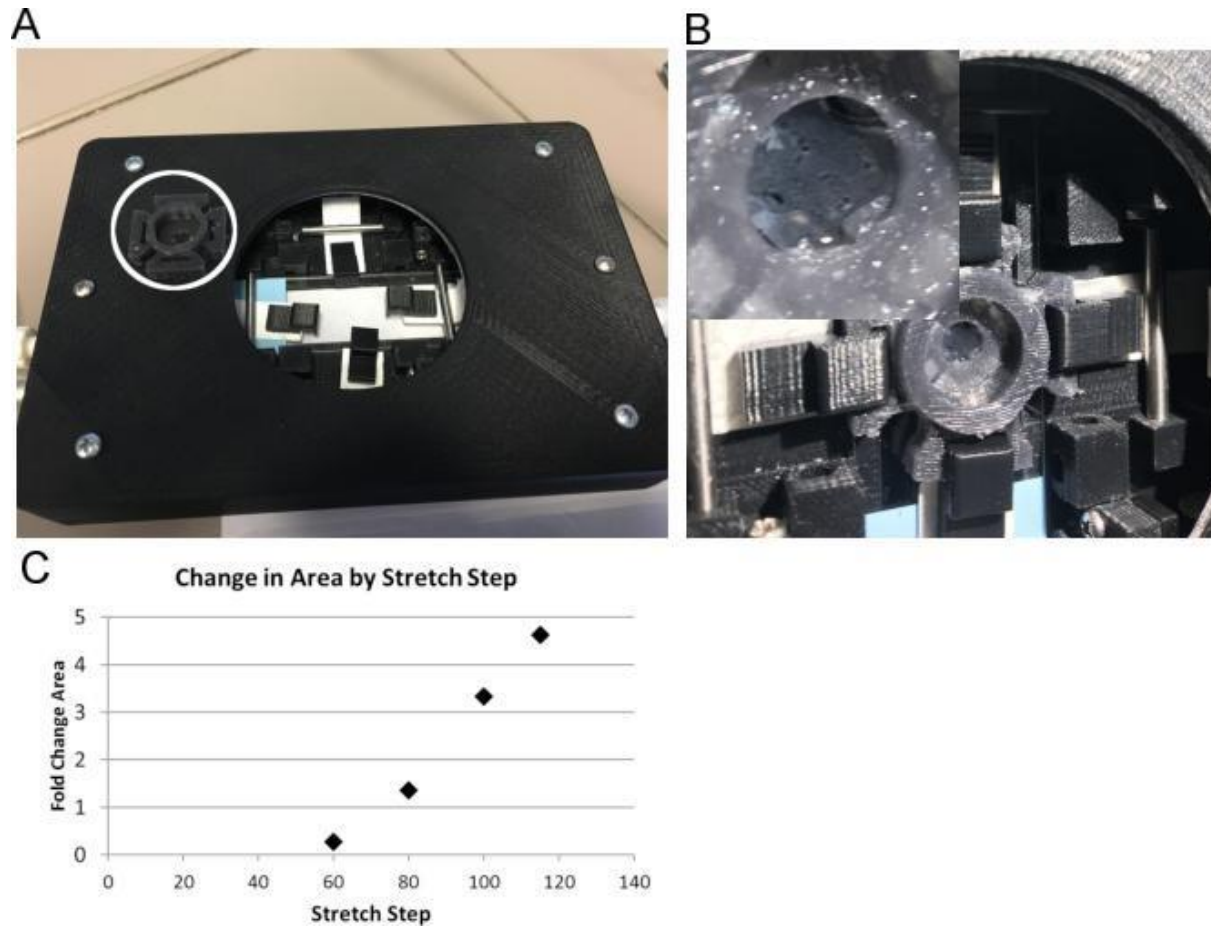
Western blot for CELA1 in aged smoker and non-smoker lung homogenates (Supplemental Figure 7).



Supplemental Figure 7: Aged Human Lung Western Blot. (A) CELA1 and (B) total protein stain of smoker and non-smoker aged human lung.

## Lung Stretching Supplemental Data

Image of 3D-printed confocal microscope stretching device (Supplemental Figure 8A&B). Quantification of biaxial strain applied by device (Supplemental Figure 8C).



Supplemental Figure 8: 3D-printed Confocal Microscope Lung Stretching Device. (A) Four motors are housed within a plastic case that fits within the microscope mounting plate. A silicone mold (circle) is secured by four clips attached to the motors by Tyvek strips. (B) Image of lung before stretching and after stretching (inset). (C) Quantification of the increase in mold aperture area with number of stretch (steps). The steps used for imaging are shown.