

Title Page

Susceptibility vessel sign as a predictor for recanalization and clinical outcome in acute ischaemic stroke: A Systematic Review and Meta-analysis

Review information

Keywords: gradient-recalled echo (GRE), susceptibility-weighted imaging (SWI), acute ischaemic stroke, susceptibility vessel sign (SVS), prominent hypointense vessel sign (PHVS), systematic review, meta-analysis.

Authors

Si Zhao Tang¹, Jon Sen²

¹Department of Diagnostic Imaging, National University Hospital, Singapore. E-mail: Si_Zhao_TANG@nuhs.edu.sg

²Institute of Applied Clinical Sciences, Keele University, Guy Hilton Research Centre, Staffordshire, United Kingdom.

Word Count: 2,976

Abstract

T2*-weighted MRI using GRE and SWI sequences can potentially prognosticate the recanalization rate and clinical outcomes in patients with acute ischaemic stroke, using susceptibility vessel sign (SVS) and prominent hypointense vessel sign (PHVS).

A literature search on PubMed, EMBASE databases and other sources from inception up to 01 February 2020 was conducted. 15 studies which reported SVS and PHVS were included in qualitative synthesis. 9 studies on SVS were included in quantitative synthesis i.e. meta-analysis.

Meta-analysis did not show any significant difference in the recanalization rate between SVS (+) group and SVS (-) group (RR = 0.95, 95% CI = 0.87–1.05, p = 0.33). Treatment subgroup analysis (intravenous thrombolysis, IVT- or mechanical thrombectomy, MT-only) does not show significant association between the SVS and IVT-only (RR = 0.73, 95% CI = 0.51-1.05, P=0.09); or MT-only groups (RR = 0.99, 95% CI = 0.90-1.09, P=0.90). No significant association between poor clinical outcome at 3 months and presence of SVS (RR = 1.42, 95% CI = 0.79–2.57, p = 0.24). Treatment subgroup analysis revealed significant association of the SVS and poor clinical outcome at 3 months in the MT-only (RR = 0.67, 95% CI = 0.55–0.82, p = 0.0001) or no thrombolytic treatment (RR = 2.83, 95% CI = 1.69-4.75, p < 0.0001).

In conclusion, there is a significant association between the presence of SVS and poor clinical outcome in patients who underwent MT or without treatment, and no definitive association between the presence of SVS and recanalization rate for acute ischemic stroke.

Introduction

In recent years, there have been a multitude of studies which investigated the association between gradient-recalled echo (GRE)/susceptibility-weighted imaging (SWI) magnetic resonance imaging (MRI) sequences as a prognostication test for recanalization rate and clinical outcome. [1,2](#)

Principles of GRE and SWI

The GRE and SWI sequences are T2*-weighted sequences, based on T2* relaxation i.e. the rate of decay in transverse magnetization. The magnetic field inhomogeneities from susceptibility differences between tissues and materials results in accelerated T2* relaxation, leading to the loss of signal intensity on GRE sequence. These magnetic field inhomogeneities cause geometric distortion and artefacts from loss of signal intensity, which are visualised as dark (or hypointense) areas on MR images and sometimes termed as susceptibility artefacts. Magnetic field inhomogeneity can be caused by blood products, paramagnetic contrast agents, iron deposits, air-tissue interfaces and metallic implants. [3](#)

The nomenclature for GRE imaging can be confusing due to variations in sequence design depending on the machine vendors. For the purpose of clarification, the GRE sequence in this article refers to the two-dimensional (2D) GRE sequences, as SWI is also based on GRE imaging but the acquisition is done in a three-dimensional (3D) planes. The GRE sequences are more sensitive compared to SWI sequences to the deleterious T2* effects from the air-tissue interfaces or metallic implants. This is due to the increased thickness of the sections acquired which is generally associated with larger voxel sizes in GRE sequences. [3](#)

SWI is a more recently developed 3D sequence (in relative to GRE) which uses a T2*-weighted technique that exploits the susceptibility differences in magnetic fields together with both magnitude and additional phase information. The phase information is acquired based on local susceptibility differences of the tissues, which then can be used to differentiate paramagnetic substances (such as deoxyhaemoglobin, haemosiderin, ferritin) or diamagnetic substances (such as calcium), depending on the algorithm used in the MRI machine which is vendor-specific. Phase images are more sensitive to magnetic field inhomogeneity in different tissues components as well and provide a superior image contrast in comparison to the GRE sequence. Hence, SWI is considered to be more sensitive in detecting paramagnetic substances i.e. deoxyhaemoglobin. [3](#)

Both GRE and SWI sequences are useful in depicting paramagnetic blood products such as deoxyhaemoglobin, methaemoglobin or hemosiderin within tissues. This is useful in pathological conditions such as cerebral haemorrhage, vascular malformation, haemorrhage in tumour, thrombosed aneurysm et cetera.

Imaging Markers based on GRE/SWI for Prognostication in Acute Ischaemic Stroke

Several studies have identified and described the usage of this susceptibility sign (i.e. increased in hypointense area due to signal loss) on T2*-weighted imaging within the middle cerebral artery (MCA), cortical and deep cerebral veins as imaging markers [4-8](#), which are termed as the susceptibility vessel sign (SVS) and prominent hypointense vessel sign (PHVS) in this review article.

The SVS was defined as a hypointense signal that exceeds the diameter of the contralateral artery located at the site of the thrombus by Flacke S. et al. [9](#) and Rovira A. et al. [10](#) The postulated mechanism of SVS is due to the presence of deoxygenated haemoglobin in acute clots which is paramagnetic in nature, disrupting the magnetic field homogeneity and causing a rapid dephasing of

spins with dramatic signal loss. [11](#) The SVS sign was more frequently observed in patients with erythrocyte-dominant clots and stroke aetiology of cardiogenic embolus (CE), rather than fibrin-dominant clot and patients with large artery atherosclerosis (LAA). [12 13](#) This association was further supported by a systematic review by Liu M. et al. [2](#)

The prominent hypointense vessel sign (PHVS) was defined as abnormal hypointensity of the cerebral veins after arterial occlusion, which was initially reported and further subdivided into cortical vessel sign (CVS) and brush sign (BS) by Morita N. et al. [14](#) The CVS was defined as increased hypointensity and enlargement of vessels along the course of the cerebral cortical veins at the ischemic site compared to the contralateral side, whereas the BS was defined as similar changes seen in unilateral deep white matter subependymal and medullary veins. [14](#) T2*-weighted-based imaging is useful for evaluating venous changes in the affected hemisphere after acute ischaemic stroke due to its extreme sensitivity to paramagnetic substances such as deoxyhaemoglobin, thus reflecting the oxygen extraction fraction and metabolic rate of the affected tissue. [15](#) In the ischaemic brain, increased oxygen extraction fraction and slow flow contribute to a higher level of deoxyhaemoglobin and venous dilatation, which increases the conspicuity of vessels on SWI. [16](#) This was proposed to indicate increased oxygen extraction, which correlates well with increased venous and capillary deoxyhaemoglobin levels. [17](#)

There are some more recent studies which either combined both CVS and BS into PHVS topographically [18-20](#) or using novel quantification method. [21](#) A study was done by Zhang X et al. in 2017 further anatomically mapped and identified the deep cerebral veins in the BS as thalamostriate vein, septal vein, and internal cerebral vein for patients who had acute ischaemic stroke. The difference in hypointensity of the mapped deep cerebral veins in both hemispheres were then evaluated using quantification method, and the association between susceptibility sign in the deep cerebral veins and clinical outcome were reported. [8](#)

Despite the abundance of published studies which evaluated the prognostic value of these two signs on GRE/SWI, the significance of it in determining recanalization rate and clinical outcomes remains debatable. [12](#) Considering the uncertainty, this systematic review was conducted to assess all current evidences on the prognostic value of SVS and PHVS in patients with acute ischemic stroke, and their recanalization status and clinical outcomes.

Figure 1: Axial slice MR brain image of a “susceptibility vessel sign” (SVS) on susceptibility-weighted imaging (SWI), which demonstrates hypointense blooming artifact (white arrow) beyond parent vessel lumen in a patient with left middle cerebral artery (MCA) occlusion. Adapted from Yan S et al. [22](#)

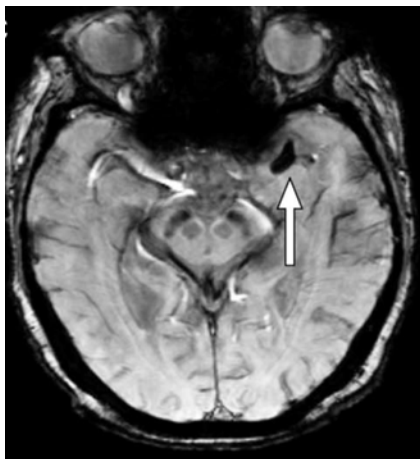
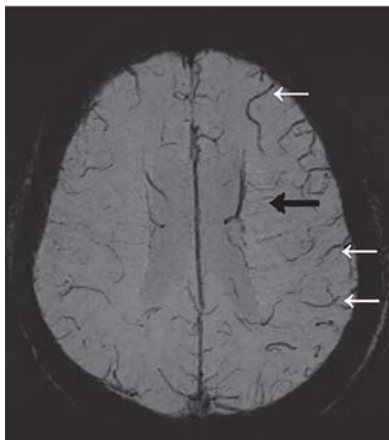


Figure 2: Axial slice MR brain image of a “prominent hypointense vessel sign” (PHVS) on SWI sequence in a patient with left MCA stroke. There are asymmetrical numerous veins with greater hypointense sign and increased diameter in the left frontoparietal cortex and corona radiata. PHVS specifically involving the cortical vessel was defined as “cortical vessel sign” (CVS; white arrows) in some studies, whereas PHVS involving the medullary veins in the deep white matter is described as “brush sign” (BS; black arrow) in some other studies. Adapted from Wang Y et al. [20](#)



Aim and Hypotheses

- To assess all current evidences on the prognostic values of SVS and PVHS for recanalization status and clinical outcomes in patients with acute ischaemic stroke.
- To validate the null hypothesis that SVS is not associated with recanalization status and clinical outcomes in patients with acute ischaemic stroke.

Methods

The systematic review was conducted according to the guidelines of Preferred Reporting Item for Systematic Reviews and Meta-analysis (PRISMA) and documented using a PRISMA flow diagram, see [Appendix 1 23](#).

Criteria for considering studies for this review

There is no restriction placed on language or time of publication.

The inclusion criteria for studies were as follows: (i) original studies which enrolled subjects diagnosed with acute ischaemic stroke and performed GRE/SWI before treatment for all subjects (ii) reports the specific finding of SVS and/or PHVS, and its association with recanalization rate, and/or functional clinical outcome such as post-treatment modified Rankin scale (mRS).

Exclusion criteria includes: (i) non-original studies e.g. editorial, case report, systematic review, meta- or pooled-analysis, letters to the editors, conference abstract; studies on animals model; basic science studies (ii) duplicated articles or article with overlapping data (iii) study which is limited in appropriate / relevant data.

Search methods for identification of studies

Potentially relevant studies were identified by systematically searching PubMed, Embase, and the Cochrane Library from inception up to 25 January 2020 with a combination of terms “susceptibility vessel sign” and “stroke” and their entry terms. Conference abstract and reference lists of available records identified in the initial publications were also manually searched to avoid omitting relevant researches. The title and abstract of all studies were screened for potential literature that fulfilled the inclusion criteria. Full text versions were subsequently retrieved to review the eligibility to be included.

Outcome measures

The outcome was recanalization status and poor clinical outcome at 3 months after onset of stroke.

Successful recanalization is defined as an arterial occlusive lesion (AOL) scale 2 and 3, or modified Mori scale 2 and 3 on any radiological image measured within 24 hours after intravenous thrombolysis (IVT), or TIC1 2b to 3 after mechanical thrombectomy (MT) [24](#).

Clinical outcome was defined as poor for modified Rankin score (mRS) of 3–6, and good for mRS \leq 2.

Data collection and analysis

DATA EXTRACTION

The following data were extracted and tabulated from studies into standardized data extraction forms: study design, year, country/region, sample size, type of MR sequences used (GRE or SWI) and their interpretation, type of reperfusion treatment conducted, recanalization status assessment, functional clinical outcome.

QUALITY ASSESSMENT

The quality of the included studies was assessed using Quality Assessment of Diagnostic Accuracy Studies-2 i.e. QUADAS-2 [25](#).

STATISTICAL ANALYSIS

Risk ratio (RR) and 95% confidence interval (CI) were used to determine the associations between positive GRE / SWI findings, recanalization status, functional outcomes, and any influence of treatment. The aim is to compare recanalization and radiological outcomes in patients with characteristic GRE / SVS findings and determine the impact of reperfusion treatment.

The overall effect was tested using z scores calculated by Fisher’s z transformation with significance set at $p < 0.05$. The chi-squared (χ^2) and I-squared (I^2) tests were used to evaluate statistical heterogeneity with significance set at $P < 0.10$. If there is significant heterogeneity of the studies ($I^2 > 50$ or $P < 0.10$), a random-effect (DerSimonian-Laird) model was used; otherwise, a fixed-effect (Mantel-Haenszel) model was chosen. If there was a possibility that the pooled estimates would be confounded by substantial heterogeneity among the studies, the results were not pooled in order to prevent misinterpretation. To evaluate the stability of the pooled results, sensitivity analyses were conducted by changing the analysis model to random-effects model, sequentially removing individual studies and conducting subgroup analysis. Publication bias was evaluated by Egger’s test and qualitative evaluation of funnel plots for asymmetry. All statistical analyses were performed using Review Manager 5.3 (RevMan) [26](#).

Results

Study Selection

Appendix 1 presents the PRISMA flow diagram for study selection. A total of 1879 records were identified through EMBASSE and MEDLINE, and 17 additional records were identified through other sources. There were 1315 records left after duplicates were removed. 1277 records were excluded based on title and abstract. 33 records were identified to be assessed via a full-text review for eligibility. A total of 22 studies presented a relationship between SVS/PHVS, recanalization status and / or clinical outcomes in patients with acute ischaemic stroke (AIS). Of the 22 studies, 7 studies were further excluded from qualitative analysis due to either inadequate data [19 27 28](#), using different definition of SVS [29](#), non-standardized definition of recanalization [4 30](#) or mRS was evaluated at 6 months [31](#) (see *Supplementary Table 1*). No studies were considered to be seriously flawed as per the QUADAS-2.

15 of studies which reported SVS and PHVS were included in qualitative synthesis (*Table 1 & 2*), and 9 of studies on SVS were included in quantitative synthesis i.e. meta-analysis.

Study Characteristics

The 15 studies included 1 randomized case-control study [32](#), 2 prospective cohort studies [5 18](#) and 12 retrospective studies [6 8 20-22 33-39](#). The patient populations were from Asia (China, Japan) in 9 studies [5 6 8 18 20-22 35 39](#), in Europe (France) in 5 studies [32-34 37 38](#) or North America (USA) in 1 study [36](#). 9 out of 15 studies evaluated the significance of SVS in either recanalization or clinical outcome or both [6 22 32-38](#). Whereas the remaining 6 studies investigated the significance of PHVS in different variations (for e.g. CVS, BS, combining both CV and BS, IPTSV which concept was derived from BS), and its relationship with either recanalization rate or clinical outcome or both [5 8 18 20 21 26 39](#).

In the 9 studies which evaluated SVS, 6 used GRE sequences and 3 used SWI sequences. In terms of treatment strategy for studies in SVS, 4 recruited patients who underwent MT exclusively [32-34 38](#), 3 included patients treated with IVT solely [6 22 37](#), 1 study included patients on different treatment strategies [36](#) and 1 study only included patients who did not had IVT/MT [35](#). MT was performed with a stent retriever or an aspiration catheter in all enrolled studies. Of the 9 SVS studies, recanalization status was presented in 7 studies, and clinical outcomes were measured in 7 studies. The details of these SVS studies are presented in *Table 1*.

For the 6 studies which evaluated the different variations of PHVS, the definition of PHVS at the ipsilateral side of stroke and its assessing methods were heterogeneous. The different variations of PHVS include cortical vessel sign (CVS) [20](#) or asymmetrical cortical vessel sign (ACVS) [18 39](#) which assessed the cortical cerebral veins, brush sign (BS) [5 20](#) or asymmetrical medullary vessel sign (AMVS) [39](#) which focused on the medullary and deep white matter cerebral veins, prominent vessel sign (PHVS) which include both cortical and deep cerebral veins [20 21](#), ipsilateral prominent thalamostriate vein (IPTSV) [8](#). 4 studies qualitatively assessed the presence of PHVS [5 18 20 39](#), and two studies assessed PHVS using quantitative method [8 21](#). The detailed individual characteristics of these PHVS studies are tabulated in *Table 2*. Meta-analysis for the studies of PHVS was not performed in view of the heterogeneity in PHVS definition and assessment method.

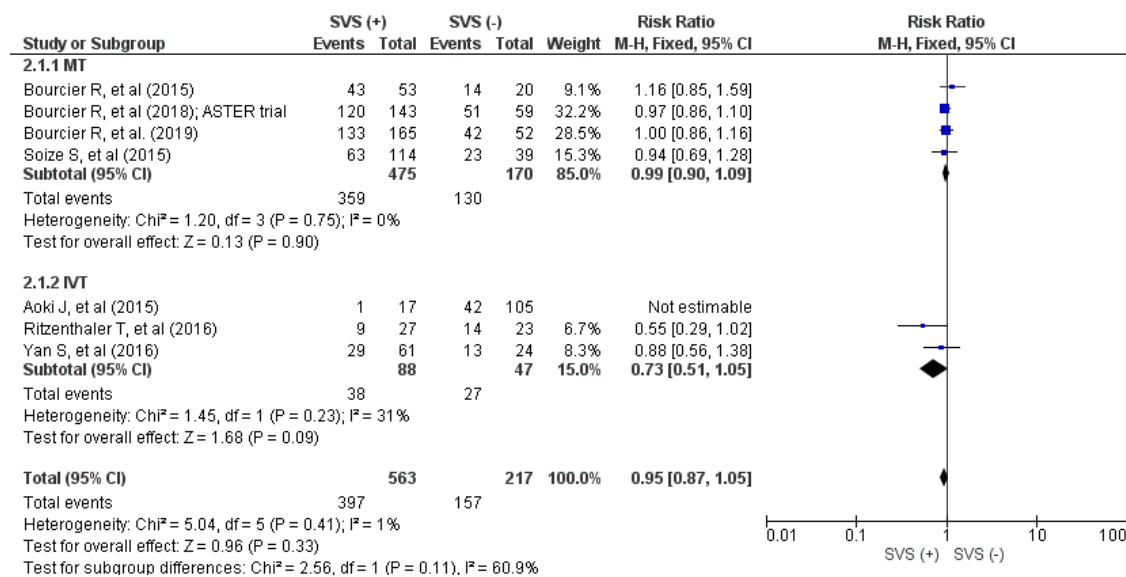
Predictive value of SVS on recanalization rate after reperfusion therapy (IVT or MT only)

7 studies revealed a relationship between presence of SVS and recanalization rate after reperfusion therapy. Meta-analysis did not show any significant difference in the recanalization rate between

SVS (+) group and SVS (-) group (RR = 0.95, 95% CI = 0.87–1.05, p = 0.33; see Figure 1) with no significant heterogeneity (P = 0.41, I² = 1%).

In the subgroup analysis with regards to treatment type received (IVT- or MT-only), no significant association is found between the SVS and IVT-only (RR = 0.73, 95% CI = 0.51-1.05, P=0.09) or MT-only groups (RR = 0.99, 95% CI = 0.90-1.09, P=0.90). No significant difference was found between these two treatment subgroups as well (P= 0.11).

Figure 3: RR and 95% CI values for recanalization rate in SVS versus absence of SVS; fixed-effects model

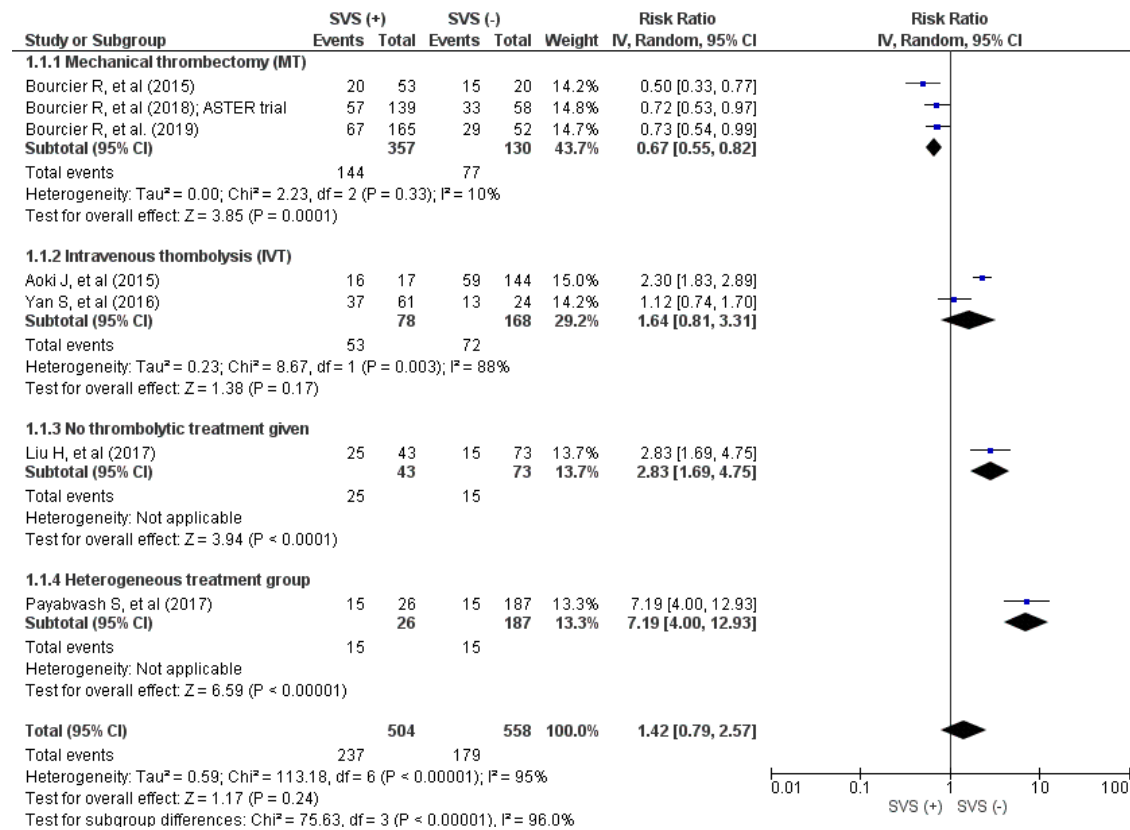


Predictive value of SVS on clinical outcome after 3 months

Pooled analysis was performed for 7 studies which reported the association of SVS and functional outcome using mRS score at 3 months. No significant association between poor clinical outcome at 3 months and presence of SVS (RR = 1.42, 95% CI = 0.79–2.57, p = 0.24; see Figure 2) was demonstrated.

In treatment subgroup analysis, there is significant heterogeneity in the IVT-only (P = 0.41, I² = 1%) treatment subgroup. Patients with SVS was more likely to achieve poor clinical outcome at 3 months in the MT-only treatment group (RR = 0.67, 95% CI = 0.55–0.82, p = 0.0001), whereas there is no significant association of SVS and poor clinical outcome in the IVT-only group (RR = 1.64, 95% CI = 0.81–3.31, p = 0.17). The group with no thrombolytic therapy given (RR = 2.83, 95% CI = 1.69-4.75, p < 0.0001) and group which received either IVT/MT/no thrombolytic treatment (RR = 7.19, 95% CI = 4.00-12.93, p < 0.0001) both demonstrated significant association between presence of SVS and poor clinical outcome.

Figure 4: RR and 95% CI values for poor clinical outcome in SVS versus absence of SVS; random-effects model



Discussion

This review demonstrated prognosticating value of SVS in clinical outcome after acute ischaemic stroke (AIS), and the need of standardizing the different definitions and methods of assessing PHVS and its variations. The pooled estimate based on 7 studies suggested that SVS is not a significant predictor for recanalization outcome after AIS in patients who underwent IVT or MT, and there is no difference between recanalization outcome in patients treated with IVT or MT who had SVS.

SVS

Despite previous study which reported the presence of SVS as significant predictor for stroke subtype in particularly of cardioembolic origin [2](#), the presence of SVS as a predictor for recanalization in response to IVT or EVT in AIS patients still remains debatable. It was known that the presence of an SVS in thrombi is related to the composition of a clot. SVS suggests erythrocyte-dominant clot due to its content of predominantly paramagnetic deoxygenated haemoglobin, which interferes with magnetic field homogeneity on susceptibility-weight imaging sequences [13](#). It was reported that the histopathology of retrieved clots affects the attempts and procedural time of MT for AIS [40](#), and hence the potential use of SVS to determine its composition and the recanalization outcome in patients who underwent MT. However, this association remains debatable as pooled

estimates showed no significant association between SVS and recanalization outcome in patients who underwent MT for AIS.

Pooled estimates also demonstrates significant association between presence of SVS and poor clinical outcome in patients with AIS, but only in two studies which had either patients who had no thrombolytic therapy given due to missed therapeutic window treatment [35](#), or despite listed as mixed therapeutic strategies but most of the patients (159/213, 74%) had no thrombolytic therapy given [36](#). Significant association of poor clinical outcome and presence of SVS was also demonstrated with patients who underwent MT-only, but no significant association of poor clinical outcome and presence of SVS is seen in patients who underwent IVT-only. The association of poor clinical outcome and SVS in patients who had no thrombolytic treatment given was expected due to increased recanalization rate, however the association between presence of SVS and poor clinical outcome in patients who underwent MT only is debatable. This highlights the need of more data for further clarification of the predictive value of SVS in clinical outcomes.

PHVS

The postulated mechanism of blood vessel signal drop on susceptibility-weight imaging in the ipsilateral side of the affected side, i.e. prominent hypointense vessel sign (PHVS) is due to increased oxygen extraction fraction and/or level of deoxyhaemoglobin in the region with hypoperfusion compared to normal brain areas [15-17](#). In view of the heterogeneity in definition and method of assessment for PHVS, pooled estimate cannot be done to delineate its association with clinical outcome. However, there are two studies in particular which used quantification method to assess this sign, by either comparing the total number of intravenous pixels on the infarction side and on the unaffected side after tracing and automatic segmentation of the shallow and deep veins [21](#); or specific anatomical subdivided variation of PHVS and reported the association of ipsilateral prominent thalamostriate vein (IPTSV) and poor clinical outcome [8](#), which their definition and method of assessment appear to be more easily standardized. However only one published study is currently available in each of these two definitions / assessment methods. Further investigation could be directed towards these two signs and their predictive value for clinical outcome after AIS.

Limitations

There are several limitations to this review. Firstly, most of the included studies were observational studies, which are prone to selection bias. Secondly, there was presence of significant heterogeneity in the meta-analysis for clinical outcome, with source not identified in subgroup analysis. Thirdly, there is lack of standardization of in the description of PHVS. Last but not least, the difference in imaging acquisition technique between GRE and SWI was not accounted, and there is no separation between results based on these sequences.

Conclusion

In summary, this systematic review and meta-analysis demonstrated that there was significant association between presence of SVS and poor clinical outcome in patients subgroups who underwent MT or no treatment at all; and no definitive association between the presence of SVS and recanalization rate after IVT or MT for acute ischemic stroke. Qualitative systematic review also revealed significant heterogeneity in the definition and method of assessment in PHVS. Given the limitation of current available studies, further large-scale investigations on SVS or predictive value of PHVS / IPTSV on clinical outcomes with common standards and definition of PHVS / IPTSV are required to confirm present conclusions and address some unsolved restriction.

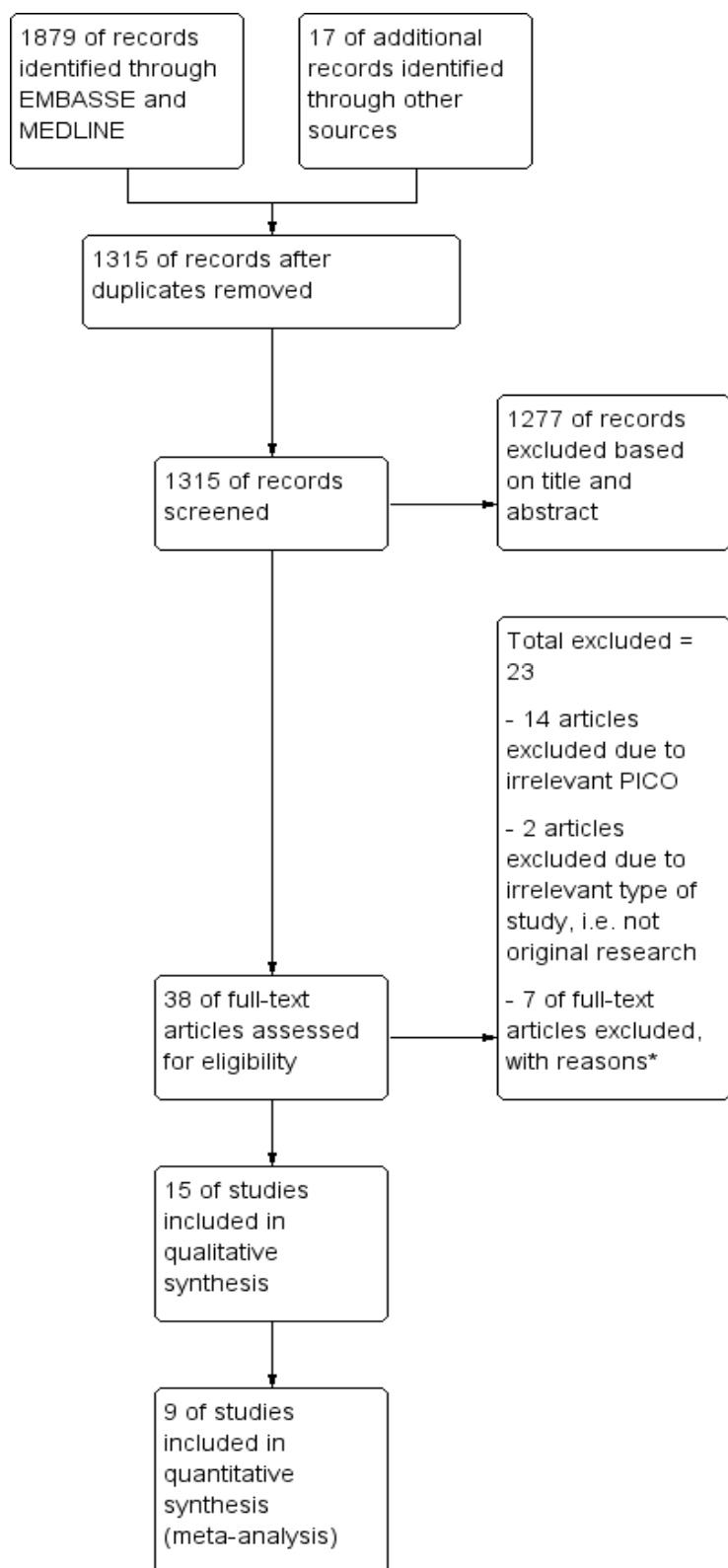
References

1. Ko HC, Ryu CW, Yun SJ, et al. Characteristic Signs on T2*-Based Imaging and Their Relationship with Results of Reperfusion Therapy for Acute Ischemic Stroke: A Systematic Review and Evidence to Date. *Neurointervention* 2018;13(2):90-99. doi: 10.5469/neuroint.2018.01039 [published Online First: 2018/09/11]
2. Liu M, Li L, Li G. The different clinical value of susceptibility vessel sign in acute ischemic stroke patients under different interventional therapy: A systematic review and meta-analysis. *J Clin Neurosci* 2019;62:72-79. doi: 10.1016/j.jocn.2019.01.002 [published Online First: 2019/02/05]
3. Chavhan GB, Babyn PS, Thomas B, et al. Principles, Techniques, and Applications of T2*-based MR Imaging and Its Special Applications. *RadioGraphics* 2009;29:1433-49.
4. Kimura K, Iguchi Y, Shibasaki K, et al. M1 susceptibility vessel sign on T2* as a strong predictor for no early recanalization after IV-t-PA in acute ischemic stroke. *Stroke* 2009;40(9):3130-2. doi: 10.1161/STROKEAHA.109.552588 [published Online First: 2009/06/27]
5. Terasawa Y, Yamamoto N, Morigaki R, et al. Brush sign on 3-T T2*-weighted MRI as a potential predictor of hemorrhagic transformation after tissue plasminogen activator therapy. *Stroke* 2014;45(1):274-6. doi: 10.1161/STROKEAHA.113.002640 [published Online First: 2013/11/01]
6. Aoki J, Kimura K, Shibasaki K, et al. The susceptibility vessel sign at the proximal M1: a strong predictor for poor outcome after intravenous thrombolysis. *J Neurol Sci* 2015;348(1-2):195-200. doi: 10.1016/j.jns.2014.12.002 [published Online First: 2014/12/23]
7. Baik SK, Choi W, Oh SJ, et al. Change in cortical vessel signs on susceptibility-weighted images after full recanalization in hyperacute ischemic stroke. *Cerebrovasc Dis* 2012;34(3):206-12. doi: 10.1159/000342148 [published Online First: 2012/09/26]
8. Zhang X, Zhang S, Chen Q, et al. Ipsilateral Prominent Thalamostriate Vein on Susceptibility-Weighted Imaging Predicts Poor Outcome after Intravenous Thrombolysis in Acute Ischemic Stroke. *AJNR Am J Neuroradiol* 2017;38(5):875-81. doi: 10.3174/ajnr.A5135 [published Online First: 2017/03/18]
9. Flacke S, Urbach H, Keller E, et al. Middle Cerebral Artery (MCA) Susceptibility Sign at Susceptibility-based Perfusion MR Imaging: Clinical Importance and Comparison with Hyperdense MCA Sign at CT. *Radiology* 2000;215:476-82.
10. Rovira A, Orellana P, Alvarez-Sabín J, et al. Hyperacute Ischemic Stroke: Middle Cerebral Artery Susceptibility Sign at Echo-planar Gradient-Echo MR Imaging. *Radiology* 2004;232:466-73.
11. Clark RA, Watanabe AT, Bradley Jr WG, et al. Acute hematomas: effects of deoxygenation, hematocrit, and fibrin-clot formation and retraction on T2 shortening. *Radiology* 1990;175(201):201-6.
12. Liebeskind DS, Sanossian N, Yong WH, et al. CT and MRI early vessel signs reflect clot composition in acute stroke. *Stroke* 2011;42:1237-43.
13. Kim SK, Yoon W, Kim TS, et al. Histologic analysis of retrieved clots in acute ischemic stroke: correlation with stroke etiology and gradient-echo MRI. *AJNR Am J Neuroradiol* 2015;36:1756-62.
14. Morita N, Harada M, Uno M, et al. Ischemic findings of T2*-weighted 3-tesla MRI in acute stroke patients. *Cerebrovasc Dis* 2008;26(4):367-75. doi: 10.1159/000151640 [published Online First: 2008/08/30]
15. Zaitzu Y, Kudo K, Terae S, et al. Mapping of Cerebral Oxygen Extraction Fraction Changes with Susceptibility-weighted Phase Imaging. *Radiology* 2011;261(3)

16. Kaya D, Dinçer A, Yildiz ME, et al. Acute ischemic infarction defined by a region of multiple hypointense vessels on gradient-echo T2* MR imaging at 3T. *Am J Neuroradiol* 2009;30:1227–32.
17. Mittal S, Wu Z, Neelavalli J, et al. Susceptibility-weighted imaging: technical aspects and clinical applications, part 2. *AJNR Am J Neuroradiol* 2009;30(2):232-52. doi: 10.3174/ajnr.A1461 [published Online First: 2009/01/10]
18. Sun W, Liu W, Zhang Z, et al. Asymmetrical cortical vessel sign on susceptibility-weighted imaging: a novel imaging marker for early neurological deterioration and unfavorable prognosis. *Eur J Neurol* 2014;21(11):1411-8. doi: 10.1111/ene.12510 [published Online First: 2014/07/22]
19. Chen CY, Chen CI, Tsai FY, et al. Prominent vessel sign on susceptibility-weighted imaging in acute stroke: prediction of infarct growth and clinical outcome. *PLoS One* 2015;10(6):e0131118. doi: 10.1371/journal.pone.0131118 [published Online First: 2015/06/26]
20. Wang Y, Shi T, Chen B, et al. Prominent Hypointense Vessel Sign on Susceptibility-Weighted Imaging Is Associated with Clinical Outcome in Acute Ischaemic Stroke. *Eur Neurol* 2018;79(5-6):231-39. doi: 10.1159/000488587 [published Online First: 2018/04/20]
21. Zhao G, Sun L, Wang Z, et al. Evaluation of the role of susceptibility-weighted imaging in thrombolytic therapy for acute ischemic stroke. *J Clin Neurosci* 2017;40:175-79. doi: 10.1016/j.jocn.2017.01.001 [published Online First: 2017/02/24]
22. Yan S, Liu K, Tong L, et al. Different risk factors for poor outcome between patients with positive and negative susceptibility vessel sign. *J Neurointerv Surg* 2016;8(10):1001-5. doi: 10.1136/neurintsurg-2015-011999 [published Online First: 2015/09/27]
23. Moher D, Liberati A, Tetzlaff J, et al. Preferred reporting items for systematic reviews and meta-analyses: the PRISMA statement. *PLoS Med* 2009;6(7):e1000097. doi: 10.1371/journal.pmed.1000097 [published Online First: 2009/07/22]
24. Zaidat OO, Lazzaro MA, Liebeskind DS, et al. Revascularization grading in endovascular acute ischemic stroke therapy. *Neurology* 2012;79:S110–S116.
25. Zeng X, Zhang Y, Kwong JS, et al. The methodological quality assessment tools for preclinical and clinical studies, systematic review and meta-analysis, and clinical practice guideline: a systematic review. *J Evid Based Med* 2015;8(1):2-10. doi: 10.1111/jebm.12141 [published Online First: 2015/01/17]
26. Review Manager (RevMan) [Computer Program]. Version 5.3. [program]. Copenhagen: The Nordic Cochrane Centre: The Cochrane Collaboration, 2014.
27. Darcourt J, Withayasuk P, Vukasinovic I, et al. Predictive Value of Susceptibility Vessel Sign for Arterial Recanalization and Clinical Improvement in Ischemic Stroke. *Stroke* 2019;50(2):512-15. doi: 10.1161/STROKEAHA.118.022912 [published Online First: 2019/01/04]
28. Kang DW, Jeong HG, Kim DY, et al. Prediction of Stroke Subtype and Recanalization Using Susceptibility Vessel Sign on Susceptibility-Weighted Magnetic Resonance Imaging. *Stroke* 2017;48(6):1554-59. doi: 10.1161/STROKEAHA.116.016217 [published Online First: 2017/04/23]
29. Aoki J, Kimura K, Shibasaki K, et al. Location of the Susceptibility Vessel Sign on T2*-Weighted MRI and Early Recanalization within 1 Hour after Tissue Plasminogen Activator Administration. *Cerebrovasc Dis Extra* 2013;3(1):111-20. doi: 10.1159/000354848 [published Online First: 2013/10/29]
30. Cho KH, Kim JS, Kwon SU, et al. Significance of susceptibility vessel sign on T2*-weighted gradient echo imaging for identification of stroke subtypes. *Stroke* 2005;36(11):2379-83. doi: 10.1161/01.STR.0000185932.73486.7a [published Online First: 2005/10/15]
31. Huang P, Chen CH, Lin WC, et al. Clinical applications of susceptibility weighted imaging in patients with major stroke. *J Neurol* 2012;259(7):1426-32. doi: 10.1007/s00415-011-6369-2 [published Online First: 2011/12/22]
32. Bourcier R, Mazighi M, Labreuche J, et al. Susceptibility Vessel Sign in the ASTER Trial: Higher Recanalization Rate and More Favourable Clinical Outcome after First Line Stent Retriever

- Compared to Contact Aspiration. *J Stroke* 2018;20(2):268-76. doi: 10.5853/jos.2018.00192 [published Online First: 2018/06/12]
33. Bourcier R, Hassen WB, Soize S, et al. Susceptibility vessel sign on MRI predicts better clinical outcome in patients with anterior circulation acute stroke treated with stent retriever as first-line strategy. *J Neurointerv Surg* 2019;11(4):328-33. doi: 10.1136/neurintsurg-2018-014217 [published Online First: 2018/08/30]
 34. Bourcier R, Volpi S, Guyomarch B, et al. Susceptibility Vessel Sign on MRI Predicts Favorable Clinical Outcome in Patients with Anterior Circulation Acute Stroke Treated with Mechanical Thrombectomy. *AJNR Am J Neuroradiol* 2015;36(12):2346-53. doi: 10.3174/ajnr.A4483 [published Online First: 2015/09/01]
 35. Liu H, Mei W, Huang Y, et al. Susceptibility vessel sign predicts poor clinical outcome for acute stroke patients untreated by thrombolysis. *Exp Ther Med* 2017;14(5):5207-13. doi: 10.3892/etm.2017.5195 [published Online First: 2017/12/05]
 36. Payabvash S, Benson JC, Taleb S, et al. Susceptible vessel sign: identification of arterial occlusion and clinical implications in acute ischaemic stroke. *Clin Radiol* 2017;72(2):116-22. doi: 10.1016/j.crad.2016.11.001 [published Online First: 2016/11/28]
 37. Ritzenthaler T, Lacalm A, Cho TH, et al. Sequential MR Assessment of the Susceptibility Vessel Sign and Arterial Occlusion in Acute Stroke. *J Neuroimaging* 2016;26(3):355-9. doi: 10.1111/jon.12312 [published Online First: 2015/11/11]
 38. Soize S, Batista AL, Rodriguez Regent C, et al. Susceptibility vessel sign on T2* magnetic resonance imaging and recanalization results of mechanical thrombectomy with stent retrievers: a multicentre cohort study. *Eur J Neurol* 2015;22(6):967-72. doi: 10.1111/ene.12693 [published Online First: 2015/03/20]
 39. Yu J, Wang L, Li Z, et al. Related Factors of Asymmetrical Vein Sign in Acute Middle Cerebral Artery Stroke and Correlation with Clinical Outcome. *J Stroke Cerebrovasc Dis* 2017;26(10):2346-53. doi: 10.1016/j.jstrokecerebrovasdis.2017.05.023 [published Online First: 2017/06/26]
 40. Maekawa K, Shibata M, Nakajima H, et al. Erythrocyte-rich thrombus is associated with reduced number of maneuvers and procedure time in patients with acute ischemic stroke undergoing mechanical thrombectomy. *Cerebrovasc Dis Extra* 2018;8:39-49.

Appendices



Appendix 1 PRISMA flow diagram for SVS/PHVS studies. Adapted from Moher et al., (2009). Preferred Reporting Items for Systematic Reviews and Meta-Analyses: The PRISMA statement.

Table 1. Studies with SVS

Study	Region	Design	Site	Sample size	T2* sequence	Interpretation	Reperfusion therapy	Recanalization assessment	Clinical outcome assessment
Aoki J, et al (2015)	Japan	Retrospective	Single centre	161	GRE	SVS	IVT	Recanalization at 1 hour	mRS score at 3 months
Bourcier R, et al (2015)	France	Retrospective	Single centre	73	GRE	SVS	MT	Recanalization at end of MT	mRS score at 3 months
Bourcier R, et al (2018); ASTER trial	France	Randomized case-control	Multi-centre	202	GRE	SVS	MT	Recanalization at end of MT	mRS score at 3 months
Bourcier R, et al. (2019)	France	Retrospective	Multi-centre	217	GRE	SVS	MT	Recanalization at end of MT	mRS score at 3 months
Liu H, et al (2017)	China	Retrospective	Single centre	116	SWI	SVS	N/A	N/A	mRS score at 3 months
Payabvash S, et al (2017)	USA	Retrospective	Two centres	213	SWI	SVS	IVT / MT / none	N/A	mRS score at 3 months
Ritzenthaler T, et al (2016)	France	Retrospective	Multi-centre	50	GRE	SVS	IVT	Recanalization at 3 hours	N/A
Soize S, et al (2015)	France	Retrospective	Multi-centre	153	GRE	SVS	MT	Recanalization at end of MT	mRS score at 3 months
Yan S, et al (2016)	China	Retrospective	Single centre	85	SWI	SVS	IVT	Recanalization status at follow-up MRA 24 hours after IVT	mRS score at 3 months

Table 2. Studies with PHVS

Study	Region	Design	Site	Sample size	T2* sequence	Interpretation	Reperfusion therapy	Recanalization assessment	Clinical outcome assessment
Sun W, et al (2014)	China	Prospective	Single centre	572	SWI	ACVS (i.e. CVS)	N/A	N/A	END at 72 hours mRS score at 3 months

Terasawa Y, et al (2014)	Japan	Prospective	Single centre	36	GRE	BS	IVT	Recanalization on follow-up MRA within 24 hours after IVT	mRS score at 3 months
Wang Y, et al (2018)	China	Retrospective	Single centre	40	SWI	PHVS, CVS, BS	IVT / MT	Recanalization on second CTA or end of MT	mRS score at 3 months
Yu J, et al (2017)	China	Retrospective	Single centre	124	SWI	ACVS (i.e. CVS), AMVS (i.e. BS)	N/A	N/A	mRS score at 3 months
Zhang X, et al (2017)	China	Retrospective	Single centre	109	SWI	IPTSV	IVT	Reperfusion status	mRS score at 3 months
Zhao G, et al (2017)	China	Retrospective	Single centre	60	SWI	Quantitative PHVS	IVT	N/A	NIHSS at 1 and 24 hours; mRS score at 3 months

Supplementary Table 1: Excluded studies with reasons

Study	Reason for exclusion
Aoki J, et al (2013) 29	<ul style="list-style-type: none"> - SVS was further divided into 3 subgroups: M1 proximal, M1 distal and distal MCA - Clinical and radiological outcome were further analysed under 3 subgroups of the SVS
Chen CY, et al (2015) 19	<ul style="list-style-type: none"> - Uses prominent vessel sign (PVS) which was defined as either increased vessel number or diameter of the hypointense vessels in the target area, when compared with the non-target area. - No exact interval given for follow-up MRI - No data on third-month mRS score; only correlation done for 1st month mRS score; good and poor clinical outcomes not defined on the basis of mRS and only defined by changes in NIHSS.

	<ul style="list-style-type: none"> - Recanalization status not available. Radiological outcome was assessed by infarct growth [any new or larger lesion on the second MRI and scored from 10 (no growth) to 0 (growth in all 10 zones) based on the ASPECTS topographic system.]
Cho KH, et al (2005) 30	<ul style="list-style-type: none"> - Despite using normal SVS definition (in MCA), definition of recanalization did not utilize mTICI / Mori / AOL scales - Follow-up MRA interval within 1 week (other studies performed within 24 hours); Only 69.5% patients underwent follow-up MRA
Darcourt J, et al (2019) 27	<ul style="list-style-type: none"> - Definition of SVS not included in the published full text article, only image illustration and description were given - Clinical outcome evaluated were NIHSS scores before and 24 hours after treatment; NIHSS score data not tabulated; 3 months mRS not collected due to some patients on drip and ship model, in which follow-up was not done by stroke neurologist - Inadequate data provided on recanalization subgroups, for e.g. did not specify number of patients who achieved recanalization in SVS positive subgroup
Huang P, et al (2012) 31	<ul style="list-style-type: none"> - Evaluated mRS at 6th month, clinical outcome was defined as good for score 0-3; and bad for score 4-6 (most of the studies used 3-month mRS and mRS 0 to 2 as favorable outcome)
Kang DW, et al (2017) 28	<ul style="list-style-type: none"> - SVS was defined as a hypointense signal on SWI in the corresponding symptomatic occlusive vessels (terminal ICA and MCA). In contrast with the conventional definition, the SVS was confirmed to be present even if the SVS diameter was smaller than the diameter of the contralateral artery. - Inadequate data provided on recanalization subgroups, for e.g. did not specify number of patients who achieved recanalization in SVS positive subgroup
Kimura K, et al (2009) 4	<ul style="list-style-type: none"> - Despite using normal SVS definition (in MCA), the definition of recanalization did not utilize mTICI / Mori / AOL scales; graded as complete, partial or no recanalization instead - Recanalization status was only evaluated on follow-up MRA within 30 minutes and 24 hours after IVT - Clinical outcome was evaluated using NIHSS on admission, at 24 hour and after 7 days; subdivided into "Dramatic improvement" for reduction of 10 in the total NIHSS / complete recovery; "Good improvement" for reduction of 4; "Worsening" for increase in the total NIHSS score of 4 / death

