

1 From SARS and MERS to COVID-19: a review of the quality and  
2 responsiveness of clinical management guidelines in outbreak  
3 settings

4  
5 Authors:

6 Samuel Lipworth\* MBBS, Clinical Research Fellow 1,2

7 Ishmeala Rigby\* MSc, Research Assistant 6

8 Vincent Cheng\* DPhil, Senior Research Associate 4

9 Peter Bannister MSc, Medical Student 3

10 Eli Harriss BSc, Information Specialist 5

11 Karen Cook, BSc, Patient and Public Advocate 8

12 Erhui Cai, Postdoctoral Researcher 6

13 Mais Tattan MD, Postgraduate Student 3

14 Terrence Epie MD, Postgraduate Student 7

15 Lakshmi Manoharan MBBS, Research Assistant 6

16 Kate Lambe, MSc, Postgraduate Student 3

17 Melina Michelen MSc, Research Assistant 6

18 Anna Vila Gilibets, BSc, Medical Student 3

19 Andrew Dagens MRCP, Clinical Academic 6

20 Louise Sigfrid<sup>+</sup> PhD, Clinical Research Fellow 6

21 Peter Horby<sup>+</sup> FRCP, Professor 6

22

23 \* Joint first authors

24 <sup>+</sup> Joint Senior authors

25

26 <sup>1</sup> Nuffield Department of Medicine, University of Oxford, Oxford, OX3 7BN, UK

27 <sup>2</sup> Oxford University Hospitals NHS Foundation Trust, Oxford, OX3 9DU, UK

28 <sup>3</sup> Brighton and Sussex Medical School, Brighton, BN1 9PX, UK

29 <sup>4</sup> Bristol Medical School, University of Bristol, Bristol, BS8 1TL, UK

30 <sup>5</sup> Bodleian Health Care Libraries, University of Oxford, Oxford, OX3 9DU, UK

31 <sup>6</sup> International Severe Acute Respiratory and emerging Infection Consortium, Centre for

32 Tropical Medicine, University of Oxford, Oxford, OX3 7LG, UK

33 <sup>7</sup> University of Oxford, Oxford, OX3 2JD, UK

34 <sup>8</sup> Not applicable

35

36 Correspondence to: Louise Sigfrid, ISARIC GSC, Centre for Tropical Medicine and Global

37 Health, University of Oxford, Oxford, OX3 7LG, UK at [Louise.Sigfrid@ndm.ox.ac.uk](mailto:Louise.Sigfrid@ndm.ox.ac.uk)

38

## 39 Abstract

40 **Objective-** To assess the responsiveness and quality of clinical management guidelines

41 (CMGs) in SARS, MERS and COVID-19 and determine whether this has improved over time.

42 **Design-** Rapid literature review, quality assessment and focus group consultation.

43 **Data Sources** – Google and Google Scholar were systematically searched from inception to 6<sup>th</sup>

44 June 2020. This was supplemented with hand searches of national and international public

45 health agency and infectious disease society websites as well as directly approaching clinical

46 networks in regions where few CMGs had been identified via the primary search.

47 **Eligibility Criteria-** CMGs for the treatment of COVID-19/SARS/MERS providing

48 recommendations on supportive care and/or specific treatment.

49 **Methods-** Data extraction was performed using a standardised form. The Appraisal of  
50 Guidelines for Research and Evaluation (AGREE-II) tool was used to evaluate the quality of the  
51 CMGs. Six COVID-19 treatments were selected to assess the responsiveness of a subset of  
52 guidelines and their updates to 20<sup>th</sup> November 2020. We ran two sessions of focus groups with  
53 patient advocates to elicit their views on guideline development.

54 **Results-** We included 37 COVID-19, six SARS, and four MERS CMGs. Evidence appraisals in  
55 CMGs generally focused on novel drugs rather than basic supportive care; where evidence for  
56 the latter was provided it was generally of a low quality. Most CMGs had major methodological  
57 flaws (only two MERS-CoV and four COVID-19 CMGs were recommended for use by both  
58 reviewers without modification) and there was no evidence of improvement in quality over time.  
59 CMGs scored lowest in the following AGREE-II domains: scope and purpose, editorial  
60 independence, stakeholder engagement, and rigour of development. Of the COVID-19 CMGs,  
61 only eight included specific guidance for the management of elderly patients and only ten for  
62 high-risk groups; a further eight did not specify the target patient group at all. Early in the  
63 pandemic, multiple guidelines recommended unproven treatments and whilst in general findings  
64 of major clinical trials were eventually adopted, this was not universally the case. Eight  
65 guidelines recommended that use of unproven agents should be considered on a case-by-case  
66 basis. Patient representatives expressed concern about the lack of engagement with them in  
67 CMG development and that these documents are not accessible to non-experts.

68 **Conclusion-** The quality of most CMGs produced in coronaviridae outbreaks is poor and we  
69 have found no evidence of improvement over time, highlighting that current development  
70 frameworks must be improved. There is an need to strengthen the evidence base surrounding  
71 basic supportive care and develop methods to engage patients in CMG development from the  
72 beginning in outbreak settings.

73 **Systematic review registration-** PROSPERO CRD42020167361

74

75

76 **Keywords**

77 Clinical Management Guidelines, Quality, Inclusivity, responsiveness, COVID-19, SARS,

78 MERS, AGREE-II

79 **Introduction**

80 Clinical management guidelines (CMGs) are useful tools to help clinicians provide quality,  
81 evidence-based care to patients. Their utility is potentially even greater in an outbreak setting  
82 when clinicians are faced with the challenges of managing a new pathogen combined with  
83 increased pressures on healthcare services and redeployment to areas in which they have  
84 limited experience. Outbreaks are however also associated with significant time pressure and  
85 high levels of uncertainty, making production of methodologically rigorous guidelines difficult.<sup>1</sup>

86

87 The SARS-CoV-2 pandemic has highlighted the disproportionate impact of infectious disease  
88 outbreaks on vulnerable (e.g. the elderly and immunosuppressed)<sup>2</sup> and socioeconomically  
89 disadvantaged groups in society.<sup>3</sup> Infectious diseases often present differently in these  
90 populations and yet most CMGs produced early in the pandemic did not provide specific advice  
91 for the management of these groups.<sup>1</sup> As knowledge about new diseases increases as time  
92 elapses, the inclusivity, quality and usefulness of CMGs should also improve. Pandemics such  
93 as COVID-19 are likely to occur with increasing frequency throughout the 21st Century and a  
94 failure to improve the processes by which clinical practice learns and responds will ultimately  
95 lead to unnecessary morbidity and mortality.<sup>4</sup>

96

97 In this manuscript, we track the evolution of clinical management guidelines across three  
98 coronaviridae pan/epidemics: SARS-CoV-1, MERS-CoV and SARS-CoV-2. We particularly

99 focus on whether the rigour of development of guidelines and inclusivity of vulnerable groups  
100 has improved between these outbreaks and over the course of the COVID-19 pandemic. We  
101 aim to identify the strengths and weaknesses of guidelines produced in these settings and to  
102 evaluate whether lessons from previous outbreaks have been learnt. For a subset of guidelines  
103 in the current SARS-CoV-2 pandemic we also examine how responsive these CMGs are in  
104 incorporating new evidence from the latest clinical trials. In doing so we ask the bigger question  
105 of how clinical management guidelines can be improved as health professionals continue to  
106 manage large numbers of COVID-19 patients and for future pandemics.  
107

## 108 Methods

109 This review is an update of a rapid review<sup>1</sup> and part of a wider project evaluating the availability,  
110 quality and inclusivity of clinical management guidelines for high consequence infectious  
111 diseases (HCID). The Preferred Reporting in Systematic Reviews and Meta-Analyses  
112 (PRISMA) checklist was used to construct this review (Figure 1).<sup>5</sup>

### 113 Search strategy

114 In a previous review, we found that most CMGs were not published in peer-reviewed journals  
115 and rarely indexed in the electronic databases.<sup>1</sup> We therefore focussed our efforts on extensive  
116 hand-searches of the grey literature using a combination of systematic Google and Google  
117 Scholar searches and by specifically searching Ministry of Health, national public health agency  
118 institutions, World Health Organisation (WHO), Centres for Disease Control and other infectious  
119 disease society websites with pre-defined keywords (supplement). This was complemented by  
120 utilising the International Severe Acute Respiratory and Emerging Infection Consortium  
121 (ISARIC)<sup>6</sup> network to contact clinical networks in regions where limited numbers of CMGs where

122 initially identified. Finally, we searched reference lists of included CMGs. We aimed to identify a  
123 globally representative sample of CMGs, focusing on international and national CMGs in this  
124 review for feasibility and because these likely inform the development of locally developed  
125 guidelines at a hospital/regional level. The full search strategy is shown in the Supplementary  
126 Methods. The search was completed on the 6<sup>th</sup> June 2020.

## 127 Inclusion/exclusion criteria

128 COVID-19, SARS, and MERS CMGs that included recommendations intended to optimize  
129 patient care were included.<sup>7</sup> Guidelines that were substantially local policy documents or  
130 focused primarily on infection control/diagnostics were therefore excluded. There were no  
131 language restrictions.

132

## 133 Screening

134 Records identified from searches were independently screened, first by title and abstract,  
135 followed by full text, by two reviewers. Individuals with knowledge of the language the CMG was  
136 written in were used; where this was not possible translations were produced with Google  
137 Translate. Any disagreements were resolved by a third reviewer.

## 138 Data extraction

139 We utilised a standardised form to extract data (supplement). Data was extracted by one  
140 reviewer and checked by a second reviewer.

## 141 Quality assessment

142 The quality of each CMG was assessed using the Appraisal of Guidelines, Research and  
143 Evaluation version II (AGREE-II).<sup>8</sup> The tool consists of 23 questions (scored on a 7-point scale,  
144 from 1 (strongly disagree) to 7 (strongly agree) ) across six key domains (scope and purpose;  
145 stakeholder involvement; rigour of development; clarity of presentation; applicability; editorial  
146 independence). All CMGs were assessed using AGREE-II by two reviewers independently.  
147 CMGs where there was significant discordance in the reviewers assessments were identified by  
148 calculating Cohen's Kappa; a threshold of 0.4 was used to trigger further discussion between  
149 reviewers to resolve major disagreements. We considered three measures of whether a CMG  
150 was high quality: an overall weighted score  $\geq 0.7$  (threshold suggested by the AGREE-II  
151 developers), weighted score  $\geq 0.7$  on domains 3 and 5 (rigour of development and applicability,  
152 previously shown to be most predictive of overall score<sup>9</sup>) and reviewers' overall assessment of  
153 whether they would recommend use of the CMG. Weighted scores were calculated according to  
154 the formula presented the AGREE-II manual<sup>8</sup> : 
$$\frac{\text{Obtained score} - \text{Minimum possible score}}{\text{Maximum possible score} - \text{Minimum possible score}}$$

## 155 Responsiveness/Quality over time (subset analysis)

156 We tracked a subset of 11 COVID-19 CMGs (selected because they also featured in our earlier  
157 rapid review <sup>1</sup>) over time to assess their responsiveness to key results from randomised clinical  
158 trials (RCTs) for six treatments (hydroxychloroquine, convalescent plasma, lopinavir-ritonavir,  
159 remdesivir, dexamethasone and tocilizumab). For each CMG in this subset, we also compared  
160 the AGREE-II scores to those given to earlier versions at the beginning of the pandemic in our  
161 previous review.

## 162 Patient and Public Involvement

163 Members of the public were invited to comment on the results and interpretation of our study via  
164 a social media COVID research participation group. Two semi-structured focus groups,  
165 facilitated by two authors, were held via a teleconference call. Participants worked with review  
166 authors to comment on the methodology and inform the interpretation and presentation of  
167 results.

## 168 Statistics

169 Statistical analysis was performed in the R language for statistical computing<sup>10</sup> version 4.0.2  
170 with the ggplot library used to produce graphics.<sup>11</sup>

171

## 172 Results

173 In the main searches completed on 6<sup>th</sup> June 2020, we identified 47 CMGs (Figure 1). 37  
174 covered clinical management of COVID-19, four of MERS and six of SARS. Most COVID-19  
175 CMGs were developed by government agencies and published on the websites as standalone  
176 documents or acquired via the ISARIC<sup>6</sup> network. In contrast, SARS and MERS guidelines were  
177 generally published in peer-reviewed journals. Although we attempted to ensure that there were  
178 at least five national COVID-19 CMGs per continent, we found fewer guidelines produced in  
179 Australasia (n=1), South America (n=3) and Africa (n=6), compared to North America (n=7),  
180 Europe (n=12), and Asia (n=15). By the World Bank definition,<sup>12</sup> most guidelines were produced  
181 in high (n=21) and upper middle (n=14), followed by lower middle (n=8) and low-income  
182 countries (n=1). Three CMGs were produced by international agencies.<sup>13-15</sup>

183



## 184 Quality evaluation

185 Most CMGs were not high quality by any of the three objective measures we used. For  
186 example, (27%) 10/37 of COVID-19 CMGs had an overall score of 0.7 or above compared to  
187 2/4 (50%) MERS and 0/6 (0%) SARS. Only one guideline scored 0.7 or more for domains 3  
188 (clarity of presentation) and 5 (rigour of development) (Korean Society of Infectious Disease  
189 MERS-CoV guideline<sup>16</sup>); notably no COVID-19 guidelines met this standard. In total 25/47  
190 CMGs were recommended for use by both reviewers though there were only six (two MERS-  
191 CoV and four COVID-19) where both reviewers agreed no modification was desirable. The  
192 highest score of these were COVID-19 CMGs developed by the Infectious Diseases Society of  
193 America (IDSA),<sup>17</sup> Surviving Sepsis Campaign,<sup>14</sup> and a MERS CMG developed by the Korean  
194 Society of Infectious Disease.<sup>16</sup> These were notable for their clear expression of clinical  
195 questions which were answered rigorously using a defined methodology and were presented to  
196 a high standard.

197  
198 Considering all included CMGs, quality was not equal across the domains of the AGREE-II tool  
199 (Kruskall-Wallis  $p < 0.001$ ) and there was a wide distribution of scores within domains (Figure 2).  
200 Editorial independence' (median weighted score 0 interquartile range (IQR) 0-0.08) and rigour of  
201 development (median weighted score 0.23 (IQR 0.13-0.35) were the lowest scoring domains.  
202 The low scores for editorial independence were generally because there was no statement  
203 about the role of the funding body and many lacked conflicts of interest declarations. Low  
204 scores for rigour of development reflected the absence of a description of a systematic evidence  
205 search methodology, a lack of explicit links to supporting evidence and unclear methods for  
206 selecting key recommendations. CMGs scored better for the 'Clarity of Presentation' domain  
207 (median weighted score 0.67, IQR (0.47-0.81)). There was weak evidence of a difference in the

208 overall scores of guidelines produced by academic societies vs public health agencies (median  
209 4.5 (IQR 3.5-5.5) vs. median 3.8 (IQR 3.0-4.5), Wilcox  $p=0.06$ ).

210

## 211 No improvement in quality over time

212 To evaluate whether the quality of CMGs improved over time, we appraised CMGs from three  
213 coronaviridae outbreaks (SARS 2002-2004, MERS 2012 and COVID-19 2020). There was no  
214 evidence that overall scores were different between these outbreaks (SARS median 0.47 (IQR  
215 0.33-0.61), MERS median 0.54 (IQR 0.27-0.83), COVID-19 median 0.57 (IQR 0.50-0.71),  
216 Kruskal-Wallis  $p=0.35$ ). Notably there was also no evidence of improvement in any of the six  
217 domains measured by the AGREE-II tool between the initial and updated COVID-19 guidelines  
218 (Bonferroni adjusted paired Wilcoxon Rank Sum  $p>0.1$  in all cases, Figure 2).

## 219 Inclusivity of CMGs

220 Many CMGs were not specific in their description of the target population. This was reflected in  
221 the fact that only 34% (16/47) of all CMGs scored five or more in this AGREE-II question. Most  
222 guidelines included general advice for the management of adults, pregnant women, and  
223 children, but older and other high-risk groups patients (e.g. immunosuppressed) were notable  
224 omissions from many guidelines (Table 1). There were however some examples where this was  
225 done well for example in the WHO CMG which includes specific sections relating to the care of  
226 older people and pregnant women with COVID-19 as well as guidance on palliative care.

227

## 228 Supportive Care Recommendations

229 Nearly all CMGs gave recommendations for aspects of basic supportive care though there was  
230 generally little or no supporting literature cited. Most suggested target saturations and methods  
231 of oxygen delivery in hypoxic patients, but there were often no links to or discussion of relevant  
232 studies. For example, the WHO CMG notes that there is no evidence based guidance for the  
233 use of high flow nasal cannula (HFNC) in this setting and recommends that selected patients  
234 with COVID-19 and mild acute respiratory distress syndrome (ARDS) be considered for a  
235 therapeutic trial of Non-invasive ventilation (NIV).<sup>13</sup> No literature is provided to support this  
236 recommendation and the criteria for selecting patients for such a trial are unclear. Similarly the  
237 Surviving Sepsis COVID-19 CMG recommends the use of HFNC over NIV but notes that the  
238 quality of evidence is weak.<sup>14</sup> As a further example, (62%) 23/37 COVID-19 guidelines  
239 recommended the use of antimicrobial therapy if bacterial superinfection was clinically  
240 suspected. However most did not give guidance as to how this decision should be made nor  
241 give clear criteria for stopping (table 2). Three guidelines recommended the use of procalcitonin  
242 to guide antimicrobial use though did not provide specific thresholds.<sup>18-20</sup> Some stratified  
243 recommendations for initiating antibiotics by severity of presentation.<sup>21-23</sup>

## 244 Recommendations prior to the availability of high-quality evidence

245 CMGs varied markedly in their approach to uncertainty of therapeutic efficacy. Some noted the  
246 presence of ongoing clinical trials but made no comment on whether an agent should be used  
247 whilst others explicitly stated that no recommendation either way could be made. There were  
248 several instances where CMGs recommended that where such uncertainty existed, individual  
249 case-by-case decisions should be made based on clinical judgement (e.g. COREB for  
250 remdesivir/hydroxychloroquine/lopinavir-ritonavir<sup>24</sup> and the Korean Society of Infectious  
251 Diseases for Intravenous (IV) immunoglobulin<sup>25</sup>). Others (e.g. US CDC,<sup>26</sup> IDSA<sup>17</sup> and WHO<sup>13</sup>)

252 stated that where there was a lack of evidence, agents should only be used in the context of a  
253 clinical trial (Figure 3).

254

## 255 Responsiveness to emerging evidence

256 We followed a group of COVID-19 guidelines and tracked their recommendations on six  
257 treatments between January and November 2020 (Figure 3). Of the COVID-19 CMGs, 6/11  
258 (55%) changed their guidance on the use of Dexamethasone in response to the results of the  
259 Randomised Evaluation of COVID-19 Therapy (RECOVERY) trial and the Embedded, Multi-  
260 factorial, Adaptive Platform Trial for Community- Acquired Pneumonia (REMAP-CAP) trial.<sup>17 20 23</sup>  
261 <sup>26-37</sup> Four CMGs initially recommended the use of lopinavir/ritonavir and/or hydroxychloroquine,  
262 and all except one, a Russian CMG which noted anecdotal success with its use and  
263 recommended use in moderate cases<sup>20</sup>, recommended against its use after the publication of  
264 the RECOVERY/SOLIDARITY trials,<sup>36 38</sup> In the case of Remdesivir, 5/11 (45%) CMGs  
265 recommended its use prior to the publication of the results of the Adaptive COVID-19 Treatment  
266 Trial (ACTT-1).<sup>39</sup> A similar theme was apparent in the SARS/MERS guidelines where 4/10  
267 (40%) recommended the use of corticosteroids either absolutely or on a case-by-case basis,  
268 despite a lack of evidence.<sup>40</sup>

## 269 Stakeholder engagement

270 In our AGREE-II evaluations, CMGs were consistently poorly rated for their involvement of  
271 patient groups in their development (median score 0, (IQR 0-0)). Whilst our patient group  
272 acknowledged the need for speed, they unanimously and strongly believed that public  
273 involvement in the production of CMGs for COVID-19 would have been desirable to ensure that  
274 the patient perspective is incorporated. For example, whilst specialists are understandably  
275 focused on acute and critical care, the group felt that patient involvement might have highlighted  
276 the need for better integration with primary care and the potential utility of ambulatory monitoring  
277 (e.g. pulse oximetry). Involving patients early in a pandemic is understandably challenging,  
278 nevertheless, development of a pre-identified group that can quickly be available when needed  
279 in future was suggested. The patient group were of the opinion that stakeholder involvement,  
280 rigour of development and editorial independence (the worst performing domains in our  
281 AGREE-II evaluation) were important and that a compromise in their quality was not acceptable  
282 despite the mitigating consideration of a pandemic setting. All participants agreed that making  
283 CMGs more accessible to a lay audience is something they would value. A few individuals  
284 proposed the use of guideline summaries written in plain English, or in the form of infographics  
285 and videos. Participants felt that this would better enable patient centred care by facilitating  
286 informed discussions with health care professionals.

## 287 Discussion

288 This review and responsiveness evaluation of CMGs in MERS, SARS and COVID-19  
289 demonstrates that, as was the case earlier in the pandemic,<sup>1</sup> many CMGs have substantial  
290 methodological flaws and there has been little or no improvement between outbreaks/within the  
291 COVID-19 pandemic. The substantial heterogeneity observed in therapeutic recommendations

292 at the beginning of the pandemic did however narrow as reliable evidence from clinical trials  
293 became available. The rationale for recommendations around supportive care was often unclear  
294 and the quality of evidence used to inform these was notably poor. Many CMGs recommended  
295 treatments despite them being non-evidence based or even having demonstrated futility.  
296 Despite a body of literature now available highlighting atypical presentations of COVID-19,  
297 particularly in elderly patients (e.g. less fever, more delirium, falls and diarrhoea<sup>41</sup>), and risk of  
298 more severe diseases, most guidelines did not provide specific advice for management of this  
299 patient group.<sup>19 21 22 42-45</sup>

300

### 301 *Unanswered questions and future research*

302 Our review highlighted that recommendations on supportive care made by CMGs are often  
303 underpinned by limited and/or low-quality evidence. Where CMGs did conduct a systematic  
304 evidence review, this was usually primarily focussed on antiviral or immunomodulatory therapy.  
305 General aspects of supportive care (e.g. timing of intubation vs. a trial of NIV, target oxygen  
306 saturations, whether to give antibiotics, fluid balance decisions and thromboprophylaxis  
307 dose/agent/post-discharge regimen) are applicable to all viral infectious diseases with pandemic  
308 potential and especially important for emerging infections when the evidence base for pathogen  
309 specific therapy is limited. These issues should be addressed in living syndromic systematic  
310 reviews which would highlight knowledge gaps to be addressed in clinical trials and aid the rapid  
311 production of rigorous pathogen specific guidelines. Significant investment in the evidence base  
312 surrounding basic supportive care would likely yield great rewards in future and be globally  
313 applicable, especially given the relatively greater accessibility and lower cost of these  
314 interventions. At the onset of outbreaks, guideline committees could then identify pathogen  
315 specific clinical questions for which pragmatic RCTs could be established.

316

317 These results demonstrate the need for a better framework for the development of CMGs in  
318 outbreak settings. CMGs can still be useful and developed in a rigorous manner even when the  
319 quality and quantity of evidence available is minimal. Dissemination of expert opinion may be  
320 useful where there is no better option but should be clearly signposted as such and the rationale  
321 for recommendations needs to be clearly and transparently presented. We suggest that at least  
322 the initial methodology used to produce CMGs is subjected to a more transparent review  
323 process and ideally that these reviews should also be published. This is particularly pertinent  
324 given that the quality of CMGs did not appear to improve over time, and updated versions use a  
325 near identical format to the original. This need not slow their release which could initially be  
326 noted as interim guidance having not yet undergone such review (in a similar manner to  
327 preprints).

328  
329 CMGs would benefit from incorporating succinct summaries, with decision making tools such as  
330 flowcharts and algorithms to aid rapid decision making on the front line . Patient groups should  
331 be involved in the development of CMGs from the beginning and lay summaries should be  
332 produced to enable patients to take a proactive and informed role in their care. Whilst this is  
333 more challenging in the initial phase of the pandemic, it would be feasible and desirable to have  
334 a pool of lay volunteers on standby who could be recruited at short notice to provide input into  
335 both guideline development and clinical research. As the COVID-19 pandemic has evolved, a  
336 variety of different issues have emerged, including atypical COVID-19 presentations,<sup>41</sup> post  
337 COVID-19 syndrome<sup>46</sup> and difficulty accessing medical care during lockdowns. Continuous  
338 engagement with all stakeholders would help to identify these issues and ensure that guidelines  
339 are responsive to them.

340  
341 We observed substantial variation in the way that CMGs approach uncertainty when making  
342 recommendations on the basis of little and/or low-quality evidence. There are several examples

343 where guidelines either recommended an unproven agent for use in particular patient groups or  
344 on a case-by-case basis. There is always a temptation for “compassionate use” of biologically  
345 plausible agents for individual patients *in extremis* with no proven treatment option.<sup>47</sup> If however  
346 all patients who were treated with steroids/hydroxychloroquine/remdesivir/convalescent plasma  
347 had been randomised into trials from the beginning of the pandemic, we would have known  
348 whether these agents are beneficial (or indeed harmful) much sooner and more patients could  
349 have benefitted from these results. The success of pragmatic trials such as  
350 SOLIDARITY/RECOVERY have demonstrated the feasibility of this even in pandemic settings.

351 <sup>36 38</sup>

352

### 353 **Strengths and weaknesses of the study**

354 The inclusion of CMGs from a wide range of countries and organisations over a period of time is  
355 a strength of this study. This allowed us to evaluate the response of guideline committees to  
356 new emerging evidence. Our review is skewed towards countries in higher income  
357 classifications and we only identified one CMG from a low-income country (LIC).<sup>48-50</sup> The  
358 AGREE-II tool is not specifically designed to appraise infectious disease CMGs produced during  
359 a pandemic, which may have caused us to underestimate the quality of some guidelines.

360

### 361 **Conclusions and policy implications**

362 In conclusion, the quality of guidelines has not improved over time and despite publication of  
363 data from key clinical trials, some CMGs continue to recommend the use of agents found to be  
364 ineffective in RCTs. Existing guideline development frameworks which have successfully  
365 improved the quality of CMGs in general, have had minimal effect on those produced in



366 response to epidemics and pandemics. This highlights a need for a CMG development  
367 framework for the production of timely, evidence based, resource conscious, locally adaptable  
368 and inclusive CMGs in response to emerging outbreaks. Vulnerable groups and in particular  
369 the elderly continue to be disproportionately overlooked and the relevant specialities (e.g.  
370 geriatrics) are underrepresented in CMG development groups. Given that COVID-19 has had  
371 such a profound impact on so many people's lives and that such a vast quantity of public money  
372 has been spent, involvement of patients and the public in outbreak preparedness and response,  
373 including in CMG development is an area that needs to be urgently improved and must not be  
374 neglected in the future.

375

376

#### 377 **Authors' Contributions**

378 SL, IR and VC wrote the first draft of the manuscript, with input from LS and AD. EH performed  
379 the search strategy and executed the database search. SL performed the analysis of the  
380 AGREE-II scores and SL and IR created the figures. PB, EC, MT, TE, KL, LM, IR, SL, AD, MM,  
381 VC, and AVG screened the references, assisted with data and interpretation. KC provided  
382 additional comments from a lay perspective and helped to draft sections relating to PPI. LS and  
383 AD conceptualised the protocol and study. LS and PH provided overall supervision of the  
384 project. All authors reviewed and approved the final content for publication.

385

386 The corresponding author attests that all listed authors meet the authorship criteria and that no  
387 others meeting the criteria have been omitted.

388

#### 389 **Funding**

390 This work was supported by Wellcome. The results presented have been obtained with the  
391 financial support of the EU FP7 project PREPARE (602525). SL is an MRC Clinical Research  
392 Training Fellow (MR/T001151/1).

393

394

### 395 **Competing interest**

396 None declared

397

### 398 **Ethical approval**

399 We sought the opinion of the University of Oxford ethics committee who opined our involvement  
400 of a patient group constituted patient-public involvement and thus did not require ethical review.

### 401 **Data Sharing**

402 Raw AGREE-II scores have been deposited on FigShare

403 (<https://doi.org/10.6084/m9.figshare.13561991.v1>)

404

### 405 **Transparency statement**

406 The lead author affirms that the manuscript is an honest, accurate and transparent account of  
407 the study being reported; no important aspects of the study have been omitted; any  
408 discrepancies from the study as originally planned have been explained.

409

### 410 **Acknowledgements**

411 We would like to express our gratitude to the ISARIC network of Infectious disease  
412 physicians/public health practitioners who were valuable in searching and providing clinical  
413 management guidelines used in this review. Notably, the Ministry of Health Seychelles,  
414 Christine Williams, Dr. Desmond Oppong at the Greater Accra Regional Hospital, Ghana and  
415 Prof. Simon Anderson at the University of the West Indies. We thank our patient group for their

416 suggestions and feedback. We thank the ISARIC global coordinating center for their help and  
417 support. Thanks to Sarah Dawson for providing advice regarding the formatting of the  
418 references. The authors also thank Julian Higgins for his critical reading of the manuscript.

419

420

#### 421 **List of abbreviations**

422 CMG- Clinical Management guidelines

423 SARS-CoV-1-Severe Acute Respiratory Syndrome Coronavirus-1

424 MERS-CoV- Middle East Respiratory Syndrome Coronavirus

425 COVID-19- Coronavirus Disease-19

426 SARS-CoV-2- Severe Acute Respiratory Syndrome Coronavirus-2

427 PREPARE-Platform for European Preparedness Against (Re-)emerging Epidemics

428 PROSPERO- International Prospective Register of Systematic Reviews

429 AGREE-II - Appraisal of Guidelines for Research and Evaluation II

430 HCID- High Consequence Infectious Disease

431 ISARIC- International Severe Acute Respiratory and emerging Infection Consortium

432 IQR- Interquartile Range

433 NIV- Non-invasive ventilation

434 IV- Intravenous

435 RECOVERY- Randomised Evaluation of COVID-19 Therapy

436 CDC- Centers for Disease Control and Prevention

437 IDSA- Infectious Diseases Society of America

438 WHO- World Health Organisation

439 REMAP-CAP- Randomised, Embedded, Multi-factorial, Adaptive Platform Trial for Community-  
440 Acquired Pneumonia

441 RCT- Randomised Control Trial

442 ACTT-1- Adaptive COVID-19 Treatment Trial

443 ARDS- Acute Respiratory Distress Syndrome

444

445

446

## 447 References

448

- 449 1. Dagens A, Sigfrid L, Cai E, et al. Scope, quality, and inclusivity of clinical guidelines produced  
450 early in the covid-19 pandemic: rapid review. *BMJ* 2020;369:m1936. doi:  
451 10.1136/bmj.m1936 [published Online First: 2020/05/28]
- 452 2. Williamson E, Walker AJ, Bhaskaran KJ, et al. OpenSAFELY: factors associated with COVID-  
453 19-related hospital death in the linked electronic health records of 17 million adult NHS  
454 patients. *MedRxiv* 2020 doi: 10.1101/2020.05.06.20092999
- 455 3. Public Health England. Disparities in the risk and outcomes of COVID-19, 2020.
- 456 4. Global Preparedness Monitoring Board. A World at Risk- Annual report on global  
457 preparedness for health emergencies: World Health Organization.
- 458 5. Moher D LA, Tetzlaff J, Altman DG, Group P. Preferred reporting items for systematic reviews  
459 and meta-analyses: the PRISMA statement. *PLoS Med* 2009 doi: doi:  
460 10.1371/journal.pmed.1000097
- 461 6. International Severe Acute Respiratory and Emerging Infection Consortium. International  
462 Severe Acute Respiratory and emerging Infection Consortium 2020 [Available from:  
463 <https://isaric.org/>.
- 464 7. Graham R MM, Wolman D, Greenfield S, Steinberg E. Clinical guidelines we can trust.  
465 *National Academies Press* 2011;266 doi: DOI: 10.17226/13058
- 466 8. Brouwers MC KM, Browman GP, Burgers JS, Cluzeau F, Feder G, et al. AGREE II:  
467 advancing guideline development, reporting and evaluation in health care. *Preventive  
468 Medicine* 2010;51(5)
- 469 9. Hoffmann-Esser W, Siering U, Neugebauer EA, et al. Guideline appraisal with AGREE II:  
470 Systematic review of the current evidence on how users handle the 2 overall  
471 assessments. *PLoS One* 2017;12(3):e0174831. doi: 10.1371/journal.pone.0174831  
472 [published Online First: 2017/03/31]
- 473 10. R Core Team. R: A language and environment for statistical computing, 2017.
- 474 11. Wickham H. ggplot2: Elegant Graphics for Data Analysis: Springer-Verlag New York 2016.
- 475 12. The World Bank. The World Bank 2021 [Available from: <https://www.worldbank.org/>.
- 476 13. World Health Organisation. Clinical Management of COVID-19 2020 [updated 27 May  
477 2020]. Available from: [https://www.who.int/publications/i/item/clinical-management-of-  
478 covid-19](https://www.who.int/publications/i/item/clinical-management-of-covid-19) [Accessed: 10 June 2020].
- 479 14. Alhazzani Waleed MH, Møller; Yaseen, M. Arabi; Mark, Loeb; Michelle Ng, Gong; Eddy,  
480 Fan; Simon, Oczkowski; Mitchell, M. Levy; Lennie, Derde; Amy, Dzierba; Bin, Du;  
481 Michael, Aboodi; Hannah, Wunsch; Maurizio, Cecconi; Younsuck, Koh; Daniel, S.  
482 Chertow; Kathryn, Maitland; Fayez, Alshamsi; Emilie, Belley-Cote; Massimiliano, Greco;  
483 Matthew, Laundry; Jill, S. Morgan; Jozef, Kesecioglu; Allison, McGeer; Leonard, Mermel;  
484 Manoj, J. Mammen; Paul, E. Alexander; Amy, Arrington; John, E. Centofanti; Giuseppe,  
485 Citerio; Bandar, Baw; Ziad, A. Memish; Naomi, Hammond; Frederick, G. Hayden; Laura,

- 486 Evans; Andrew, Rhodes. Surviving Sepsis Campaign: guidelines on the management of  
487 critically ill adults with Coronavirus Disease 2019 (COVID-19). *Intensive Care Medicine*  
488 2020;46:854-87. doi: 10.1007/s00134-020-06022-5
- 489 15. World Health Organisation. Clinical management of severe acute respiratory infection when  
490 Middle East respiratory syndrome coronavirus (MERS-CoV) infection is suspected 2019  
491 [updated January 2019]. Available from:  
492 [https://www.who.int/csr/disease/coronavirus\\_infections/ipc-mers-cov/en/](https://www.who.int/csr/disease/coronavirus_infections/ipc-mers-cov/en/) [Accessed: 5  
493 August 2020].
- 494 16. Yong Pil CJY, Song; Yu Bin, Seo; Jae Phil, Choi; Hyoung Shik, Shin; Hee Jung, Yoon; Jun  
495 Yong, Choi; Tae Hyong, Kim; Young Hwa, Choi; Hong Bin, Kim; Ji Hyun, Yoon; Jacob,  
496 Lee; Joong Sik, Eom; Joon Young, Song; Sang Oh, Lee; Won Sup, Oh; Hee Jin,  
497 Cheong; Young Goo, Song; Jung Hyun, Choi; Woo Joo, Kim. Antiviral treatment  
498 guidelines for middle east respiratory syndrome. *Infection and Chemotherapy*  
499 2015;47:212-22. doi: 10.3947/ic.2015.47.3.212
- 500 17. Adarsh BR, L. Morgan; Amy Hirsch, Shumaker; Valery, Lavergne; Lindsey, Baden; Vincent  
501 Chi-Chung, Cheng; Kathryn, M. Edwards; Rajesh, Gandhi; William, J. Muller; John, C.  
502 O.; Shmuel, Shoham; M. Hassan Murad; Reem, A. Mustafa; Shahnaz, Sultan; Yngve,  
503 Falck-Ytter. Infectious Diseases Society of America Guidelines on the Treatment and  
504 Management of Patients with COVID-19 Version 1.0.3 2020 [updated 13 April 2020].  
505 Available from: [www.idsociety.org/COVID19guidelines](http://www.idsociety.org/COVID19guidelines). [Accessed 4 November 2020].
- 506 18. Ministry of Health Family Welfare Bangladesh. National Guidelines on Clinical Management  
507 of Coronavirus Disease 2019 (Covid-19) Verison 4 2020 [updated 30 March 2020].  
508 Available from: [https://corona.gov.bd/documents/COVID\\_Guideline\\_V4.0..30.3.2020.pdf](https://corona.gov.bd/documents/COVID_Guideline_V4.0..30.3.2020.pdf)  
509 [Accessed: 2 June 2020].
- 510 19. Government of Pakistan Ministry of National Health Services. Clinical Management  
511 Guidelines for COVID-19 Infections Version 02 2020 [updated 1 June 2020]. Available  
512 from: [https://www.nih.org.pk/wp-content/uploads/2020/06/20200106-Clinical-](https://www.nih.org.pk/wp-content/uploads/2020/06/20200106-Clinical-Management-Guidelines-for-COVID-19-infection-v2.pdf)  
513 [Management-Guidelines-for-COVID-19-infection-v2.pdf](https://www.nih.org.pk/wp-content/uploads/2020/06/20200106-Clinical-Management-Guidelines-for-COVID-19-infection-v2.pdf) [Accessed 27 July 2020].
- 514 20. Министерство здравоохранения Российской. ВРЕМЕННЫЕ  
515 МЕТОДИЧЕСКИЕ РЕКОМЕНДАЦИИ ПРОФИЛАКТИКА, ДИАГНОСТИКА И ЛЕЧЕНИЕ  
516 НОВОЙ КОРОНАВИРУСНОЙ ИНФЕКЦИИ (Covid-19) Версия 7 (03.06.2020) 2020  
517 [updated 3 June 2020]. Available from: [https://static-](https://static-0.rosminzdrav.ru/system/attachments/attaches/000/050/584/original/03062020_%D0%9CR_COVID-19_v7.pdf)  
518 [0.rosminzdrav.ru/system/attachments/attaches/000/050/584/original/03062020\\_%D0%9](https://static-0.rosminzdrav.ru/system/attachments/attaches/000/050/584/original/03062020_%D0%9CR_COVID-19_v7.pdf)  
519 [CR\\_COVID-19\\_v7.pdf](https://static-0.rosminzdrav.ru/system/attachments/attaches/000/050/584/original/03062020_%D0%9CR_COVID-19_v7.pdf) [Accessed: 27 July 2020].
- 520 21. Nepal Medical Council. Interim Clinical Guidance for Care of Patients with Covid-19 in  
521 Healthcare Settings 2020 [updated 3 April 2020]. Available from:  
522 [https://nmc.org.np/files/4/NMC%20COVID-](https://nmc.org.np/files/4/NMC%20COVID-19%20Interim%20Clinical%20Guideline%20for%20care%203%20April.pdf)  
523 [19%20Interim%20Clinical%20Guideline%20for%20care%203%20April.pdf](https://nmc.org.np/files/4/NMC%20COVID-19%20Interim%20Clinical%20Guideline%20for%20care%203%20April.pdf) [Accessed:  
524 15 June 2020].
- 525 22. Tave F S; Michel R; Saha K B; Noel M; Hassanein M; Fayon M; Pugazhendhi S; Michel J;  
526 Pool B; Comarmond d L; Chetty A. Seychelles Clinical Guidelines for the Management  
527 of Severe Acute Respiratory Infection (SARI) in Patients with Confirmed COVID-19  
528 Disease Version 1 2020 [updated 20 March 2020].
- 529 23. Ministry of Health Welfare Taiwan Centers for Disease Control. Interim Guidelines for  
530 Clinical Management of SARS-CoV-2 Infection 5th Edition 2020 [updated 26 March  
531 2020]. Available from: [https://www.cdc.gov.tw/Uploads/d812c836-4956-4d4b-8775-](https://www.cdc.gov.tw/Uploads/d812c836-4956-4d4b-8775-a50e58e300b8.pdf)  
532 [a50e58e300b8.pdf](https://www.cdc.gov.tw/Uploads/d812c836-4956-4d4b-8775-a50e58e300b8.pdf) [Accessed: 10 June 2020].
- 533 24. Haut Conseil de la Sante Publique. Avis relatif aux recommandations thérapeutiques dans  
534 la prise en charge du COVID-19 (complémentaire à l'avis du 5 mars 2020) 2020 [updated  
535 23 March 2020]. Available from:

- 536 [https://www.hcsp.fr/Explore.cgi/Telecharger?NomFichier=hcspa20200323\\_coronsarscov](https://www.hcsp.fr/Explore.cgi/Telecharger?NomFichier=hcspa20200323_coronsarscov)  
537 [recomthrap.pdf](#) [Accessed: 22 June 2020].
- 538 25. Korean Society of Infectious Diseases. 신종코로나바이러스 검사에 대한 대한감염학회  
539 권고안 2020 [updated 11 February 2020]. Available from:  
540 <http://www.ksid.or.kr/eng/main/main.html> [22 July 2020].
- 541 26. Centers for Disease Control Prevention. Interim Clinical Guidance for Management of  
542 Patients with Confirmed Coronavirus Disease (COVID-19) as of May 29, 2020 2020  
543 [updated 29 May 2020]. Available from: [https://www.cdc.gov/coronavirus/2019-](https://www.cdc.gov/coronavirus/2019-ncov/hcp/clinical-guidance-management-patients.html)  
544 [ncov/hcp/clinical-guidance-management-patients.html](#) [Accessed: 1 April 2020].
- 545 27. Adarsh BR, L. Morgan; Amy Hirsch, Shumaker; Valery, Lavergne; Lindsey, Baden; Vincent  
546 Chi-Chung, Cheng; Kathryn, M. Edwards; Rajesh, Gandhi; Jason, Gallagher; William, J.  
547 Muller; John, C. O.; Shmuel, Shoham; M. Hassan Murad; Reem, A. Mustafa; Shahnaz,  
548 Sultan; Yngve, Falck-Ytter. Infectious Diseases Society of America Guidelines on the  
549 Treatment and Management of Patients with COVID-19 Verion 3.3 2020 [updated 25  
550 June 2020]. Available from: [www.idsociety.org/COVID19guidelines](http://www.idsociety.org/COVID19guidelines) [Accessed: 4  
551 November 2020].
- 552 28. Robert Koch Institute. Hinweise zu Erkennung, Diagnostik und Therapie von Patienten mit  
553 COVID-19 Stand: März 2020 2020 [updated March 2020]. Available from:  
554 [https://www.bmj.com/lookup/google-](https://www.bmj.com/lookup/google-scholar?link_type=googlescholar&gs_type=article&q_txt=.%2BDiagnosis%2Band%2Btreatment%2Bof%2Bpatients%2Bwith%2BCOVID-19.Robert%2BKoch%2Binstitute%2C%2020)  
555 [scholar?link\\_type=googlescholar&gs\\_type=article&q\\_txt=.%2BDiagnosis%2Band%2Btreatment%2Bof](#)  
556 [%2Bpatients%2Bwith%2BCOVID-19.Robert%2BKoch%2Binstitute%2C%2020](#). [Accessed: 6 June 2020].
- 557 29. Robert Koch Institute. Hinweise zu Erkennung, Diagnostik und Therapie von Patienten mit  
558 COVID-19 Stand: 09.10.2020 2020 [updated 9 October 2020]. Available from:  
559 [www.stakob.rki.de](http://www.stakob.rki.de)  
560 [https://www.rki.de/DE/Content/Kommissionen/Stakob/Stellungnahmen/Stellungnahme-](https://www.rki.de/DE/Content/Kommissionen/Stakob/Stellungnahmen/Stellungnahme-Covid-19_Therapie_Diagnose.pdf?__blob=publicationFile)  
561 [Covid-19\\_Therapie\\_Diagnose.pdf?\\_\\_blob=publicationFile](#) [Accessed: 15 October  
562 2020].
- 563 30. Министерство здравоохранения Российской Федерации. ВРЕМЕННЫЕ МЕТОДИЧЕСКИЕ  
564 РЕКОМЕНДАЦИИ ПРОФИЛАКТИКА, ДИАГНОСТИКА И ЛЕЧЕНИЕ НОВОЙ  
565 КОРОНАВИРУСНОЙ ИНФЕКЦИИ (COVID-19) Версия 8 (03.09.2020) 2020 [updated 3  
566 September 2020]. Available from: [https://static-](https://static-0.minzdrav.gov.ru/system/attachments/attaches/000/051/777/original/030902020_COVID-19_v8.pdf?utm_source=yxnews&utm_medium=desktop)  
567 [0.minzdrav.gov.ru/system/attachments/attaches/000/051/777/original/030902020\\_COVI](#)  
568 [D-19\\_v8.pdf?utm\\_source=yxnews&utm\\_medium=desktop](#) [Accessed: 1 October 2020].
- 569 31. Centers for Disease Control Prevention. Interim Clinical Guidance for Management of  
570 Patients with Confirmed Coronavirus Disease (COVID-19) as of September 10, 2020  
571 2020 [updated 10 September 2020]. Available from:  
572 [https://www.cdc.gov/coronavirus/2019-ncov/hcp/clinical-guidance-management-](https://www.cdc.gov/coronavirus/2019-ncov/hcp/clinical-guidance-management-patients.html)  
573 [patients.html](#) [10 September 2020].
- 574 32. 衛生福利部疾病管制署. 新型冠狀病毒 (SARS-CoV-2) 感染臨床處置暫行指引 2020  
575 [updated 17 August 2020]. Available from: <https://www.cdc.gov.tw/> [Accessed: 1  
576 September 2020].
- 577 33. Darmon M ME, Morawiec E, Schnell D, Maury E, Constantin M J, Montravers P et al.  
578 Recommandations d'experts portant sur la prise en charge en réanimation des patients  
579 infectés à SARS-CoV2 Version 5 du 07/11/2020 2020 [updated 7 November 2020].  
580 Available from: [https://sfar.org/download/recommandations-dexperts-portant-sur-la-](https://sfar.org/download/recommandations-dexperts-portant-sur-la-prise-en-charge-en-reanimation-des-patients-en-periode-depidemie-a-sars-cov2/)  
581 [prise-en-charge-en-reanimation-des-patients-en-periode-depidemie-a-sars-cov2/](#)  
582 [Accessed: 17 November 2020].
- 583 34. Coreb Mission Nationale. Recommandations d'experts portant sur la prise en charge en  
584 réanimation des patients en période d'épidémie à SARS-CoV2 Version 4 2020 [updated

- 585 7 April 2020. Available from: [https://sfar.org/recommandations-dexperts-portant-sur-la-](https://sfar.org/recommandations-dexperts-portant-sur-la-prise-en-charge-en-reanimation-des-patients-en-periode-depidemie-a-sars-cov2/)  
586 [prise-en-charge-en-reanimation-des-patients-en-periode-depidemie-a-sars-cov2/](https://sfar.org/recommandations-dexperts-portant-sur-la-prise-en-charge-en-reanimation-des-patients-en-periode-depidemie-a-sars-cov2/)  
587 [Accessed: 10 July 2020].
- 588 35. Darmon MB, Lila; Morawiec, Elise; Maury, Eric; Constantin, Jean-Michel; Montravers,  
589 Philippe; Zahar, Jean-Ralph; Lucet, Jean-Christophe; Guery, Benoit; Bessis, Simon;  
590 Saidani, Nadia; Desmettre, Thibault; Dumas, Florence;. Recommendations d'experts  
591 portant sur la prise en charge en réanimation des patients en période d'épidémie à  
592 SARS-CoV2 Version 2 du 10/03/2020 2020 [updated 10 March 2020]. Available from:  
593 [https://www.srlf.org/wp-content/uploads/2020/03/Recommandations-dexperts-COVID-](https://www.srlf.org/wp-content/uploads/2020/03/Recommandations-dexperts-COVID-19-10-Mars-2020.pdf)  
594 [19-10-Mars-2020.pdf](https://www.srlf.org/wp-content/uploads/2020/03/Recommandations-dexperts-COVID-19-10-Mars-2020.pdf) [Accessed: 16 March 2020].
- 595 36. The RECOVERY Collaborative Group. Dexamethasone in Hospitalized Patients with Covid-  
596 19 — Preliminary Report. *The New England Journal of Medicine* 2020 doi: DOI:  
597 10.1056/NEJMoa2021436
- 598 37. The Writing Committee for the REMAP-CAP Investigators. Effect of Hydrocortisone on  
599 Mortality and Organ Support in Patients With Severe COVID-19: The REMAP-CAP  
600 COVID-19 Corticosteroid Domain Randomized Clinical Trial. *JAMA* 2020;324(13):1317-  
601 29. doi: doi:10.1001/jama.2020.17022
- 602 38. WHO Solidarity Trial Consortium. Repurposed Antiviral Drugs for Covid-19 — Interim WHO  
603 Solidarity Trial Results. *New England Journal of Medicine* 2020 doi:  
604 10.1056/NEJMoa2023184
- 605 39. Beigel H J TMK, Dodd E Lori et al., for the ACTT-1 study Group Members. Remdesivir for  
606 the Treatment of Covid-19 — Final Report. *New England Journal of Medicine*  
607 2020;383:1813-26. doi: DOI: 10.1056/NEJMoa2007764
- 608 40. Stockman LJ, Bellamy R, Garner P. SARS: systematic review of treatment effects. *PLoS*  
609 *Med* 2006;3(9):e343. doi: 10.1371/journal.pmed.0030343 [published Online First:  
610 2006/09/14]
- 611 41. Kerr AD, Stacpoole SR. Coronavirus in the elderly: a late lockdown UK cohort. *Clin Med*  
612 *(Lond)* 2020;20(6):e222-e28. doi: 10.7861/clinmed.2020-0423 [published Online First:  
613 2020/09/12]
- 614 42. Ministry of Health Cuba. Infecciones por coronavirus – COVID-19 2020 [Available from:  
615 <https://temas.sld.cu/coronavirus/covid-19/> [Accessed: 5 June 2020].
- 616 43. Ghana Ministry of Health. Provisional Standard Treatment Guidelines for Novel Coronavirus  
617 Infection COVID - 19 Guidelines for Ghana Version 1.0 2020 [Available from:  
618 <https://www.moh.gov.gh/wp-content/uploads/2016/02/COVID-19-STG-JUNE-2020-1.pdf>  
619 [Accessed: 20 June 2020].
- 620 44. Pakistan Chest Society. COVID-19 Management Guidelines 2020 2020 [updated 28 March  
621 2020]. Available from: [http://www.pakistanchestociety.pk/wp-](http://www.pakistanchestociety.pk/wp-content/uploads/2020/03/COVID-19-Management-guideline-PCS-28-March.pdf)  
622 [content/uploads/2020/03/COVID-19-Management-guideline-PCS-28-March.pdf](http://www.pakistanchestociety.pk/wp-content/uploads/2020/03/COVID-19-Management-guideline-PCS-28-March.pdf)  
623 [Accessed: 27 August 2020].
- 624 45. Department of Health Republic of South Africa. Clinical management of suspected or  
625 confirmed COVID-19 disease Version 3 2020 [updated 27 March 2020]. Available from:  
626 [https://www.nicd.ac.za/wp-content/uploads/2020/03/Clinical-Management-of-COVID-19-](https://www.nicd.ac.za/wp-content/uploads/2020/03/Clinical-Management-of-COVID-19-disease-Version-3-27March2020.pdf)  
627 [disease-Version-3-27March2020.pdf](https://www.nicd.ac.za/wp-content/uploads/2020/03/Clinical-Management-of-COVID-19-disease-Version-3-27March2020.pdf) [Accessed: 28 June 2020].
- 628 46. National Health Services. Post-COVID Syndrome (Long COVID) 2020 [Available from:  
629 <https://www.england.nhs.uk/coronavirus/post-covid-syndrome-long-covid/>.
- 630 47. Rojek AM, Martin GE, Horby PW. Compassionate drug (mis)use during pandemics: lessons  
631 for COVID-19 from 2009. *BMC Med* 2020;18(1):265. doi: 10.1186/s12916-020-01732-5  
632 [published Online First: 2020/08/23]
- 633 48. Ministerio Da Saude. Suspeito de COVID-19 2020 [updated March 2020].

- 634 49. Ministério da Saúde. Orientações Para Manejo De Pacientes Com Covid-19 2020  
635 [Available from: [https://portal.arquivos.saude.gov.br/images/pdf/2020/June/18/Covid19-](https://portal.arquivos.saude.gov.br/images/pdf/2020/June/18/Covid19-Orientac-o-esManejoPacientes.pdf)  
636 [Orientac--o--esManejoPacientes.pdf](https://portal.arquivos.saude.gov.br/images/pdf/2020/June/18/Covid19-Orientac-o-esManejoPacientes.pdf) [Accessed: 1 July 2020].
- 637 50. Ministério Da Saúde. Fluxograma de Pacientes com Suspeita de Covid-19 nos Serviços  
638 ambulatoriais (Triagem e Consultas Externas) 2020 [Available from:  
639 [http://www.misau.gov.mz/index.php/normas-procedimentos-e-](http://www.misau.gov.mz/index.php/normas-procedimentos-e-fluxos?download=239:fluxogramas-e-protocolos)  
640 [fluxos?download=239:fluxogramas-e-protocolos](http://www.misau.gov.mz/index.php/normas-procedimentos-e-fluxos?download=239:fluxogramas-e-protocolos) [Accessed: 24 July 2020].
- 641 51. European Respiratory Society. COVID-19: Guidelines and recommendations directory 2020  
642 [Available from: [https://www.ersnet.org/covid-19-guidelines-and-recommendations-](https://www.ersnet.org/covid-19-guidelines-and-recommendations-directory)  
643 [directory](https://www.ersnet.org/covid-19-guidelines-and-recommendations-directory).
- 644 52. Ministerio de Salud Argentina. Recomendaciones Para El Abordaje Terapeutico Version 2  
645 2020 [updated 29 May 2020]. Available from: <https://www.argentina.gob.ar/salud>  
646 [Accessed: 1 June 2020].
- 647 53. National Covid-Clinical Evidence Taskforce. Australian Guideline for the Clinical Care of  
648 People with COVID-19 2020 [Available from: <https://covid19evidence.net.au/>  
649 [Accessed:20 July 2020].
- 650 54. Ministry of Public Health. Directives Et Procedures Operationnelles Standards Pour La  
651 Preparation Et La Reponse Au Covid-19 Au Cameroun 2020 [updated April 2020].
- 652 55. Ministry of Health Cuba. Infecciones por coronavirus – SARS [Available from:  
653 <https://temas.sld.cu/coronavirus/sars-cov/> [Accessed: 5 June 2020].
- 654 56. Ministry of Health Cuba. Infecciones por coronavirus – MERS [Available from:  
655 <https://temas.sld.cu/coronavirus/mers/> [Accessed: 5 June 2020].
- 656 57. National Institute for Research in Reproductive Health Indian Council of Medical Research.  
657 Guidance for Management of Pregnant Women in COVID-19 Pandemic 2020 [Available  
658 from: <http://www.nirrh.res.in/> [Accessed: 14 June 2020].
- 659 58. Stefan K, Janssens U, Welte T, Weber-Carstens S, Marx G , Karagiannidis C,. S1-  
660 Empfehlungen zur intensivmedizinischen Therapie von Patienten mit COVID-19 Version  
661 1 2020 [updated March 2020]; cited 123 123]. Available from:  
662 <https://link.springer.com/article/10.1007/s00063-020-00674-3> [Accessed on 2 November  
663 2020]46.
- 664 59. Ministry of Health Family Welfare India. Revised Guidelines on Clinical Management of  
665 COVID – 19 2020 [updated 31 March 2020]. Available from:  
666 [https://www.mohfw.gov.in/pdf/RevisedNationalClinicalManagementGuidelineforCOVID1](https://www.mohfw.gov.in/pdf/RevisedNationalClinicalManagementGuidelineforCOVID1931032020.pdf)  
667 [931032020.pdf](https://www.mohfw.gov.in/pdf/RevisedNationalClinicalManagementGuidelineforCOVID1931032020.pdf) [Accessed: 2 June 2020].
- 668 60. Ministero della Salute. Gestione clinica dell ' infezione respiratoria acuta grave nei casi di  
669 sospetta infezione da nuovo coronavirus ( nCoV ) 2020 [updated 12 January 2020].  
670 Available from: [http://www.salute.gov.it/imgs/C\\_17\\_pagineAree\\_5373\\_5\\_file.pdf](http://www.salute.gov.it/imgs/C_17_pagineAree_5373_5_file.pdf)  
671 [Accessed: 24 July 2020].
- 672 61. Jamaica Ministry of Health and Wellness. Guideline for the management of Pregnancy  
673 during the COVID-19 Pandemic 2020 [updated 25 March 2020]. Available from:  
674 <https://www.moh.gov.jm/covid-19-resources-and-protocols/> [17 August 2020].
- 675 62. Jamaica Ministry of Health and Wellness. Covid-19 Preparedness and Response Plan for  
676 Outbreak Control Clinical Management of Severe Acute Respiratory Infection When  
677 Novel Coronavirus Covid-19 Infection Is Suspected Version 2 2020 [updated March  
678 2020]. Available from: [www.moh.gov.jm](http://www.moh.gov.jm) [https://www.moh.gov.jm/wp-](https://www.moh.gov.jm/wp-content/uploads/2020/04/2019nCoV-COVID-19-Clinical-Management-Guidelines-V2.pdf)  
679 [content/uploads/2020/04/2019nCoV-COVID-19-Clinical-Management-Guidelines-V2.pdf](https://www.moh.gov.jm/wp-content/uploads/2020/04/2019nCoV-COVID-19-Clinical-Management-Guidelines-V2.pdf)  
680 [Accessed: 17 August 2020].
- 681 63. 厚生労働省. 新型コロナウイルス感染症 Covid-19 V2 2020 [updated 18 May 2020].  
682 Available from: <https://www.mhlw.go.jp/index.html> [Accessed: 27 July 2020].



- 683 64. 厚生労働省. 新型コロナウイルス感染症 (COVID-19) 診療の手引き\_V3 2020 [updated 3  
684 September 2020]. Available from: <https://www.mhlw.go.jp/content/000670444.pdf>  
685 [https://www.mhlw.go.jp/stf/seisakunitsuite/bunya/0000121431\\_00111.html](https://www.mhlw.go.jp/stf/seisakunitsuite/bunya/0000121431_00111.html) [Accessed:  
686 9 September 2020].
- 687 65. Chicamba Valeria LS, ; Nhamtubo Carmita, et al. Orientações para a Abordagem e  
688 Tratamento do doente Pediátrico na UCIP do Hospital Central Maputo com COVID-19  
689 2020 [
- 690 66. Nigeria Centre for Disease Control. National Interim Guidelines for Clinical Management of  
691 COVID-19 Version 1 2020 [updated 14 March 2020]. Available from:  
692 [https://ncdc.gov.ng/themes/common/docs/protocols/177\\_1584210847.pdf](https://ncdc.gov.ng/themes/common/docs/protocols/177_1584210847.pdf) [Accessed:  
693 27 June 2020].
- 694 67. National Committee for Management of Covid-United Arab Emirates. National Guidelines for  
695 Clinical Management and Treatment of COVID-19 Version 2 2020 [updated 3 April  
696 2020]. Available from:  
697 <https://www.dha.gov.ae/en/HealthRegulation/Documents/COVID%20National%20Guidelines%20FINAL%2018%20March.pdf> [Accessed: 20 May 2020].
- 698 68. National Health Service. Clinical management of persons admitted to hospital with  
699 suspected COVID-19 infection Version 1 2020 [updated 19 March 2020]. Available from:  
700 [https://www.england.nhs.uk/coronavirus/wp-content/uploads/sites/52/2020/03/clinical-  
701 management-of-persons-admitted-to-hospita-v1-19-march-2020.pdf](https://www.england.nhs.uk/coronavirus/wp-content/uploads/sites/52/2020/03/clinical-management-of-persons-admitted-to-hospita-v1-19-march-2020.pdf) [Accessed: 24  
702 August 2020].
- 703 69. Maria Laura VC, Siroti; Guillermo, Montiel; Ada, Toledo; Carlos, Franceschini; Alejandro.  
704 Martinez, Fraga; Leslie. Vargas, Ramirez; Jose Luis, Carillo; Martha. Torres, Fraga.  
705 Recomendaciones para el Manejo No Invasivo e Invasivo de la Insuficiencia  
706 Respiratoria Hipoxémica de Novo Covid--19. 2020 [Available from:  
707 [https://www.aamr.org.ar/secciones/coronavirus/recomendaciones\\_soporte\\_ventilatorio  
708 covid.pdf](https://www.aamr.org.ar/secciones/coronavirus/recomendaciones_soporte_ventilatorio_covid.pdf) [23 July 2020].
- 709 70. World Health Organisation. Clinical management of severe acute respiratory infection 2020  
710 [updated March 2020]. Available from: [https://www.who.int/docs/default-  
711 source/coronaviruse/clinical-management-of-novel-cov.pdf](https://www.who.int/docs/default-source/coronaviruse/clinical-management-of-novel-cov.pdf) [Accessed: 1 April 2020].
- 712 71. The Korean Society of Pediatric Infection Diseases. COVID-19 Guidelines: Pediatric Care  
713 2020 [updated 20 March 2020]. 44]. Available from:  
714 <http://www.ksid.or.kr/eng/main/main.html> [Accessed: 21 July 2020].
- 715 72. Korean Society for Infectious Diseases Korean Society for Antibacterial Therapy Korean  
716 Society for Pediatric Infections Korean Society for Tuberculosis; Respiratory System.  
717 코로나 19 (COVID-19) 약물 치료에 관한 전문가 권고안 (version 1.1) 2020 [updated 25  
718 February 2020]. Available from: <http://www.ksid.or.kr/eng/main/main.html> [Accessed:  
719 22 July 2020].
- 720 73. 이무식. 시론 지역사회와 함께 하는 코로나 19 (Covid-19) 극복 V 1.1 2020 [updated 1 March  
721 2020]. Available from: <http://www.ksid.or.kr/eng/main/main.html> [Accessed: 1 June  
722 2020].
- 723 74. Lim S W ARS, Read C R, on behalf of the SARS guidelines committee of the British  
724 Thoracic Society,. Hospital management of adults with severe acute respiratory  
725 syndrome (SARS) if SARS re-emerges - updated 10 February 2004. *Journal of Infection*  
726 2004;49:1-7. doi: 10.1016/j.jinf.2004.04.001  
727
- 728 75. National Health Commission of the People's Republic of China.  
729 中东呼吸综合征病例诊疗方案 (2015年版) 2015 [updated 6 June 2015]. Available from:  
730 <http://en.nhc.gov.cn/> [Accessed: 27 July 2020].

- 731 76. National Health Commission of the People's Republic of China.  
732 传染性非典型肺炎 ( Sars) 诊疗方案 ( 2004版) 2005 [updated 25 May 2005]. Available  
733 from: <http://en.nhc.gov.cn/> [Accessed: 27 July 2020].
- 734 77. National Health Commission of the People's Republic of China. 新型冠状病毒肺炎诊疗方案  
735 ( 试行第八版 ) 2020 [updated 19 August 2020]. Available from: <http://en.nhc.gov.cn/>  
736 [Accessed: 17 September 2020].
- 737 78. Chinese Medical Association CAoCM. Consensus of the management of severe acute  
738 respiratory syndrome. *Zhonghua yi xue za zhi* 2003;83:1731-52.
- 739 79. De La Famille Et Des Personnes Handicapees Ministere De La Sante. Conduite à tenir pour  
740 la prise en charge des personnes présentant un syndrome ou une 2004 [updated 06  
741 April 2004]. Available from: [www.sante.gouv.fr](http://www.sante.gouv.fr) [http://umvf.omsk-  
742 osma.ru/infectiologie/www.infectiologie.com/site/medias/alertes/sars/protoc\\_060404.pdf](http://umvf.omsk-osma.ru/infectiologie/www.infectiologie.com/site/medias/alertes/sars/protoc_060404.pdf)  
743 [Accessed: 22 June 2020].
- 744 80. Maxwell C MA, Tai KF, Seimer A,. SOGC Clinical Practice Guideline. Management  
745 guidelines for obstetric patients and neonates born to mothers with suspected or  
746 probable severe acute respiratory syndrome (SARS). No. 225, April 2009. *International*  
747 *journal of gynaecology and obstetrics: the official organ of the International Federation of*  
748 *Gynaecology and Obstetrics* 2009;107:82-86. doi: 10.1016/j.ijgo.2009.05.006
- 749 81. National Health Commission. Diagnosis and Treatment Protocol for Novel Coronavirus  
750 Pneumonia (Trial Version 7). *Chinese Medical Journal* 2020;133 doi:  
751 10.1097/CM9.0000000000000819
- 752 82. Ministerio De Sanidad. Documento técnico Manejo clínico de pacientes con enfermedad por  
753 el nuevo coronavirus (COVID-19) 2020 [updated 3 March 2020]. Available from:  
754 [https://www.seipweb.es/wp-content/uploads/2020/03/Protocolo\\_manejo\\_clinico\\_COVID-  
755 19.pdf](https://www.seipweb.es/wp-content/uploads/2020/03/Protocolo_manejo_clinico_COVID-19.pdf) [Accessed: 10 March 2020].
- 756 83. Ministerio de Sanidad. Manejo clínico del COVID-19: unidades de cuidados intensivos 2020  
757 [updated 18 June 2020]. Available from: <https://www.mscbs.gob.es/en/home.htm>  
758 [Accessed: 25 June 2020].
- 759 84. Rijksinstituut voor Volksgezondheid en Milieu. Medicamenteuze behandeling voor patiënten  
760 met COVID-19 (infectie met SARS-CoV-2) 2020 [updated 13 August 2020]  
761 Available from: <https://swab.nl/nl/covid-19> [Accessed: 9 September 2020].
- 762 85. Società Italiana di Malattie Infettive e Tropicali. Linee Guida Sulla Gestione Terapeutica e di  
763 Supporto per Pazienti con Infezione da Coronavirus COVID-19 2020 [updated March  
764 2020]. Available from: [http://www.fvcalabria.unicz.it/COVID-19/LINEE-GUIDA/linee-  
765 guida-SIMIT-marzo-2020.pdf](http://www.fvcalabria.unicz.it/COVID-19/LINEE-GUIDA/linee-guida-SIMIT-marzo-2020.pdf) [1 April 2020].
- 766 86. Vollaard AE, Pauline; Gieling, Emilie; Boer de, Mark; Snijder, Erik; Dissel Van, Jaap.  
767 Medicamenteuze behandelopties voor opgenomen patiënten met COVID-19 2020  
768 [updated 3 March 2020]. Available from: <https://www.rivm.nl/> [Accessed: 1 April 2020].
- 769 87. Ministerio De Sanidad. Documento técnico Manejo clínico del COVID-19: atención  
770 hospitalaria 2020 [updated 18 June 2020]. Available from:  
771 [https://www.mscbs.gob.es/profesionales/saludPublica/ccayes/alertasActual/nCov/docum  
772 entos/Protocolo\\_manejo\\_clinico\\_ah\\_COVID-19.pdf](https://www.mscbs.gob.es/profesionales/saludPublica/ccayes/alertasActual/nCov/documentos/Protocolo_manejo_clinico_ah_COVID-19.pdf) [25 June 2020].
- 773 88. British Thoracic Society and Scottish Intercollegiate Guidelines Network. SIGN158 British  
774 guideline on the management of asthma. A national clinical guideline. 2003 [updated  
775 July 2019. Available from: [https://www.brit-thoracic.org.uk/quality-  
776 improvement/guidelines/asthma2020](https://www.brit-thoracic.org.uk/quality-improvement/guidelines/asthma2020).
- 777 89. Società Italiana Malattie Infettive e Tropicali Sezione Regione Lazio. Gruppo di Lavoro  
778 COVID-19-SIMIT Lazio Comitato di Redazione 2020 [updated 5 May 2020]. Available  
779 from: <https://www.simi.it/> [Accessed: 10 May 2020].

780 90. Ministerio De Sandidad. Documento técnico Manejo de la mujer embarazada y el recién  
781 nacido con COVID-19 2020 [updated 13 May 2020]. Available from:  
782 <https://www.mscbs.gob.es/en/home.htm> [Accessed: 1 June 2020].  
783

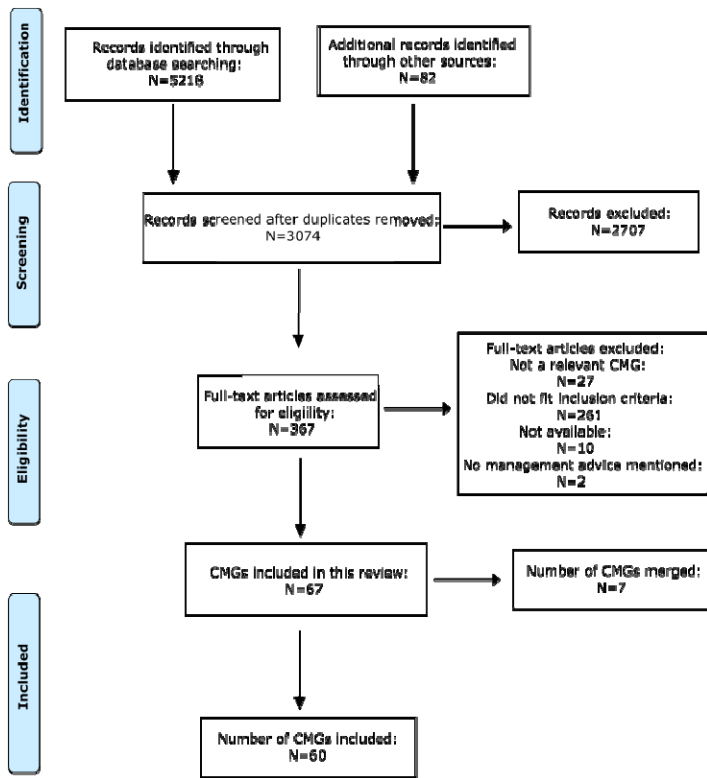
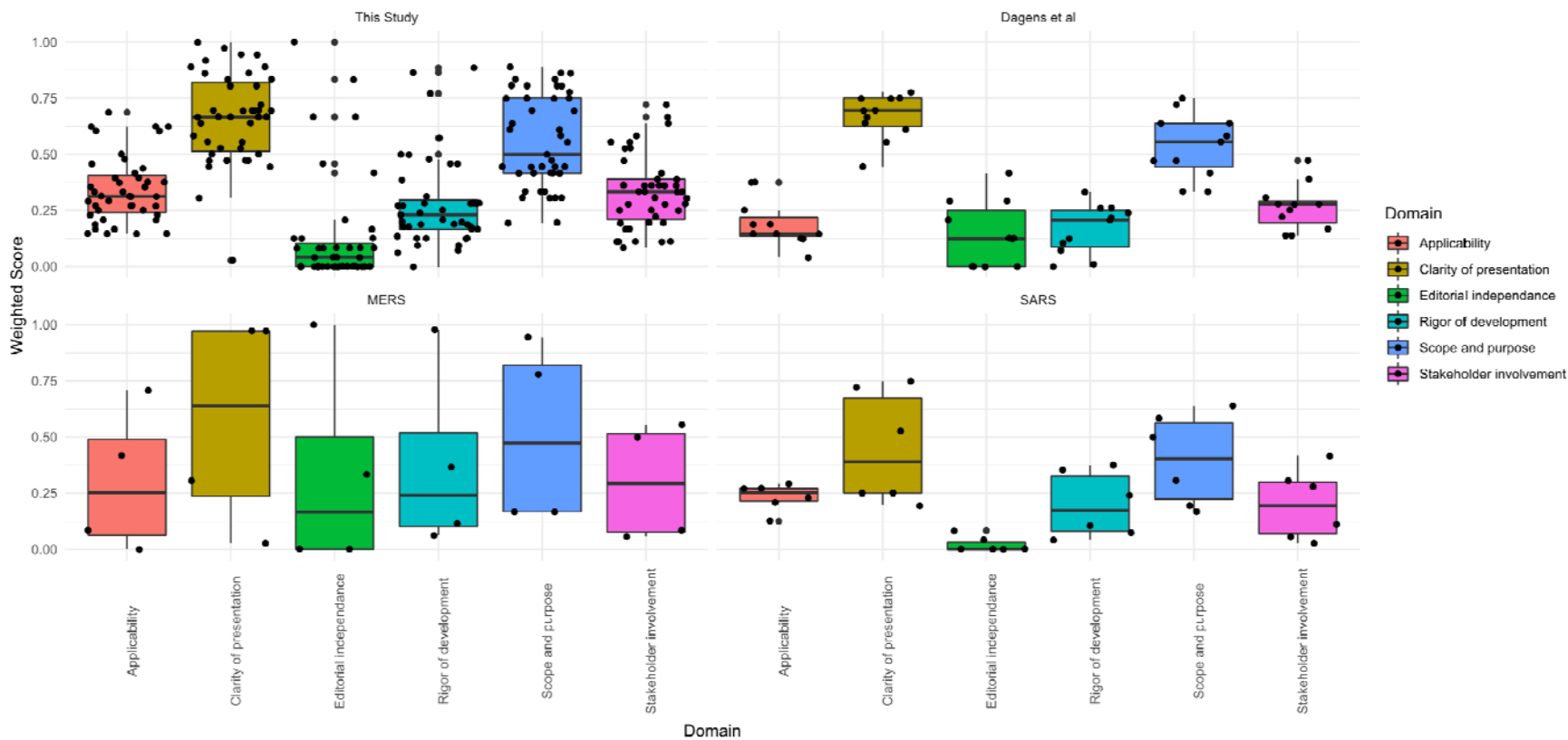
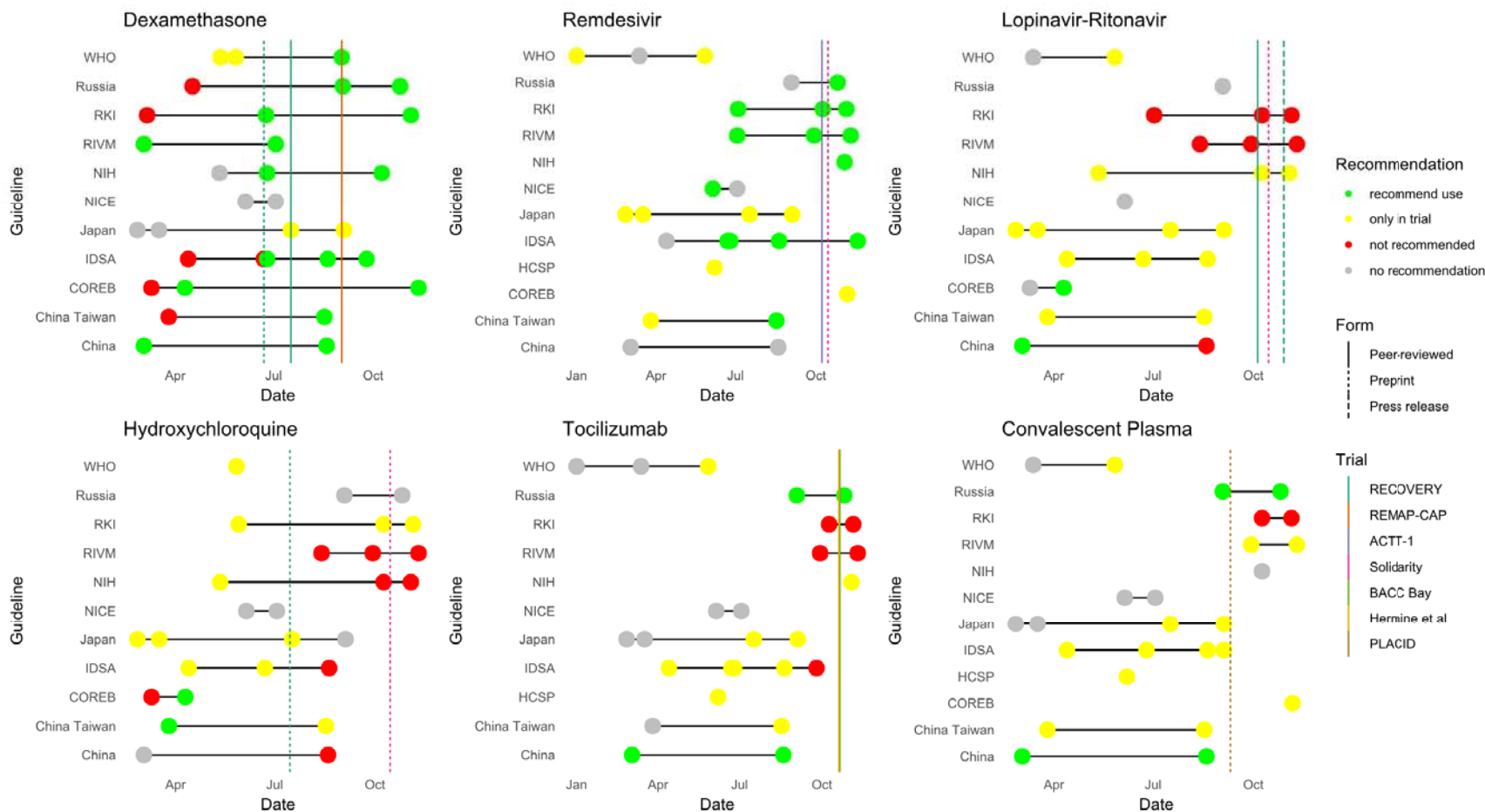


Figure 1: PRISMA diagram



**Figure 2:** Weighted scores for the six domains of the AGREE-II tool for the four groups of CMGs included. Dagens et al<sup>1</sup> refers to CMGs published in the early part of the COVID-19 pandemic. The boxplots show median and interquartile range (IQR) with the upper/lower whiskers showing the position of 1.5 \* IQR; individual datapoints are represented by black dots.



**Figure 3:** Adoption of evidence from clinical trials by CMGs over time. Intersecting vertical lines show the publication of key clinical trials either as peer-reviewed articles/pre-prents or press-releases. Dots show the publication of CMGs by bodies shown on the y axis coloured according to the recommendation made.