

# Determining the optimal COVID-19 policy response using agent-based modelling linked to health and cost modelling: Case study for Victoria, Australia

Tony Blakely, PhD <sup>1†</sup>

Jason Thompson, PhD <sup>2</sup>

Laxman Bablani, PhD <sup>1</sup>

Patrick Andersen, PhD <sup>1</sup>

Driss Ait Ouakrim, PhD <sup>1</sup>

Natalie Carvalho, PhD <sup>3</sup>

Patrick Abraham, MPH <sup>3</sup>

Marie-Anne Boujaoude, MPH <sup>1</sup>

Ameera Katar, MPH <sup>1</sup>

Edifofon Akpan <sup>2</sup>

Nick Wilson

Mark Stevenson, PhD <sup>2</sup>

**Keywords:** COVID-19; COVID-19 policy response; epidemiology; modelling; health expenditure; GDP; health impact; economic impact.

**Word count:** Abstract = 300; Main paper = 3496

**Acknowledgements:** We thank Professor Michael Baker for contribution to defining stages, and Professor Rod McClure for assistance with ABM model building. The Victorian Department of Health and Human Services provided Victorian SARS-CoV-2 notification data for calculation of hospitalisation, ICU admission and fatality rates.

## Research in context

### Evidence before this study

There have been varying approaches across countries and jurisdictions as to how to manage the COVID-19 pandemic, ranging from elimination of community transmission (e.g. Australasia, Taiwan and other East Asian and Pacific Island countries) to loose suppression or mitigation that attempts to keep the case numbers within health services capacity (e.g. Sweden, USA, India, UK and some continental European countries). The best or optimal approach is unknown, and involves an invidious balancing of health, social and economic consequences of the pandemic. But it has become apparent that in high income countries using loose suppression that one still has to use lock-downs from time to time to keep case numbers within health service capacity, raising the question as to what is the best for the economy – attempting elimination, tight suppression or loose suppression?

One approach to integrating the health and economic consequences is cost effectiveness analysis, but to date such approaches have mainly been focused on SARS-CoV-2 treatments rather than societal intervention, and have not incorporated a counterfactual approach to compare the same jurisdiction across the many (stochastically varying) realizations for different policy options.

### Added value of this study

This study uses one high-income jurisdiction, the state of Victoria in Australia as it exited its second wave, to estimate the health and economic consequences of four policy options: aggressive and moderate elimination strategies, and tight and loose suppression strategies. The modeling is done in two steps: first, an agent-based model to simulate 100 possible trajectories of daily SARS-CoV-2 infections over one year for each of the four policy options; and second, an integrated epidemiological and economic model that estimates health and economic costs. Whilst there is considerable uncertainty in outcomes for all of the four policy options, the two elimination options are usually optimal from both a health system and a partial societal (health expenditure plus GDP cost) perspective. However, if the remaining duration of the pandemic is lessened from 1 year to half a year (as may be the case with vaccine roll-outs), loose suppression becomes more favorable – suggesting countries with already high infection rates ‘ride it out’ till vaccination coverage is adequate.

## Abstract

### Background

We compared the health and economic consequences for the State of Victoria, Australia, of four COVID-19 strategies: aggressive and moderate elimination, tight suppression (aiming for 1 to 5 cases per million per day) and loose suppression (5 to 25 cases per million per day). The strategies shifted up and down through five levels of policy stringency based on the number of cases per day, for one year.

### Methods

An agent-based model (ABM) generated 100 runs of daily SARS-CoV-2 case numbers, that then fed into a proportional multistate lifetable to estimate health adjusted life years (HALYs) and costs. We used a net monetary benefit approach to estimate the optimal strategy.

### Findings

Aggressive elimination resulted in the highest percentage of days with the lowest level of restrictions (median 31.7%, 90% simulation interval 6.6% to 64.4%). However, days in hard lockdown were similar across all four strategies (medians 27.5% to 36.1%).

HALY losses (compared to a no-COVID-19 scenario) were similar for moderate elimination (286, 219 to 389) and moderate elimination (314, 228 to 413), and nearly eight and 40-times higher for tight and loose suppression. The median GDP loss was least for moderate elimination (\$US41.7 billion, \$29.0 to \$63.6 billion), but there was substantial overlap in simulation intervals between the four strategies.

From a health system perspective aggressive elimination was optimal in 64% of simulations above a willingness to pay of \$15,000 per HALY, followed by moderate elimination in 35% of simulations.

Moderate elimination was optimal from a partial societal perspective in half the simulations followed by aggressive elimination in a quarter.

Shortening the pandemic duration to 6 months saw loose suppression become preferable under a partial societal perspective.

### Interpretation

For this single high-income jurisdiction, elimination strategies were preferable over a 1-year pandemic duration.

### Funding

Anonymous philanthropic donation to the University of Melbourne.

## Introduction

There is no ‘right’ COVID-19 approach for all countries to follow. Rather, each country will devise an approach given its infection load, its ability to manage borders and quarantine, vulnerability and age structure of its population, health system capacity, economic and other resources, social values and preferences<sup>1</sup> – and more recently timelines and progress to vaccination. One way to support this challenging decision-making is to use an integrated assessment of health and economic outcomes. Such an optimisation approach is often implicit in commentaries, with phrases such as “ensuring the cure is not worse than the disease”. But seldom is this balance or optimization explicitly defined and empirically addressed.

To this point in the pandemic, a standard ‘cost-effectiveness’ analysis resting on epidemiological modelling has not been widely used with the exception of cost-effectiveness and cost-benefit studies looking at a narrow range of policy measures or focused on a particular population group (e.g.<sup>2,3</sup> and reviews<sup>4,5</sup>). Undertaking cost effectiveness studies in a pandemic is challenging for reasons such as which perspective to use (health system only, or societal) and uncertainty in many inputs – yet be it implicit or explicit, cost-effectiveness does feature in decision-making.<sup>5</sup>

In this paper we apply an integrated epidemiological and economic modelling approach to estimate the optimal COVID-19 pandemic control strategy for varying willingness-to-pay (WTP) per health adjusted life year (HALY) thresholds in a single high-income jurisdiction – the state of Victoria, Australia, as it was coming out of its second wave from 1 September. The four policy options include continuing stringent social and economic controls in an effort to achieve elimination of local transmission (‘aggressive elimination’ and ‘moderate elimination’ strategies), compared to ‘living with the virus’: ‘tight suppression’ as in some East Asian countries with low daily rates that the public health workforce can mostly manage with contract tracing; and ‘loose suppression’ with daily rates within health services capacity (e.g. countries like Spain, the UK and France between their first and second waves). We use both a health system perspective and a partial societal perspective (the latter adding GDP losses to health expenditure).

## Methods

### Conceptualisation and specification of policy scenarios

Most countries have some form of stages, ‘tiers’, or levels of control measures that a country or jurisdiction escalates up or de-escalates down depending on SARS-CoV-2 infection rates. Supplementary Table 1 shows the stages as applied in this study. Stage 1 has minimal restrictions, and by stage 4 there

are marked restrictions on who are essential workers and what is considered an essential workplace with stay at home order applying to remaining citizens (i.e. stage 4 equates to ‘hard lockdown’). The rules encoded in the ABM to escalate and de-escalate stages are shown in Table 1 – and for ‘tight suppression’ (as one example) in Figure 1. We assume that mandatory mass-mask-wearing will be retained in stages 2 to 4, and in stage 1a and 1 b will remain mandatory in public transport and busy indoor settings where physical distancing is difficult.

## Agent-based model

Further details on the ABM specification, validation and calibration are given elsewhere.<sup>6,7</sup> Briefly, the model is a generic COVID-19 model of 2,500 agents that is then scaled up to the population of interest, here the state of Victoria with a population of 6.4 million. The ABM has a daily cycle length. Each agent ‘moves’ in a two-dimensional space, contacting other agents, with opportunities for between-agent infection given transmission rates and contact duration. The model has been calibrated to the first waves in NZ and Australia, has performed well in prediction (noting inherent stochastic uncertainty)<sup>6</sup>, and has been used by the Victorian Government to help develop its RoadMap out of the second wave in Victoria.<sup>8,9</sup> Supplementary Table 2 and 3 give the parameterisation of stages in the ABM.

## GDP and unemployment impacts

Each stage was associated with a GDP impact per week compared to business-as-usual or no COVID-19 (Stage 1 US\$0.535 billion; Stage 1b US\$0.6 billion; Stage 2 US\$0.725 billion; Stage 3 US\$1.275 billion; Stage 4 US\$2.61 billion; Supplementary Table 6 and Appendix 1 for details).

## Proportional multistate lifetable model

A PMSLT<sup>10,11</sup> consists of parallel cohort lifetables for every sex by five-year old age cohort in 2020, simulated for all-cause mortality and morbidity over the remainder of their lives. Beneath this main all-cause lifetable sit parallel disease lifetables (with disease incidence and case fatality assumed independent) that proportions of the cohort reside in based upon disease incidence, case fatality and remission rates. In this paper, we use a PMSLT adapted for COVID-19 with disease states for SARS-CoV-2 infection and (for sensitivity analyses only – below) three indirect consequences of COVID-19 policy responses through changes in GDP and unemployment rates – road traffic crash (RTC), depression and anxiety. The inputs to the PMSLT are given in Supplementary Table 4.

The PMSLT was run 100 times for each policy response scenario using a 30-day cycle length, with the monthly number of SARS-CoV-2 cases from each of the ABM simulation inputted. These infections were distributed by age to match the actual proportionate distribution by age of cases in Victoria (skewed to

older ages due to outbreaks in residential aged care). The outputs of the PMSLT include incremental HALYs and net health expenditure due to SARS-CoV-2 cases and average citizen health expenditure among the living, incremental to the no-COVID-19 business-as-usual. Up-front health expenditure (e.g. ICU capacity, surveillance systems) was assumed to be a 'sunk cost' the same between scenarios. 90% uncertainty intervals about these two outputs capture both stochastic uncertainty (from the varying infection rates in the ABM) and input parameter uncertainty (in the PMSLT about variables such as hospitalisation rates from SARS-CoV-2, and to a lesser extent input parameter uncertainty in the ABM).

We then estimate the monetary benefit (NMB) approach for each of the 100 runs:

$$NMB_{ijk} = (HALY_{s_{ik}} \times WTP_j) - Cost_{ik}$$

Where:

- i indexes the 100 iterations
- j indexes the WTP
- k indexes the four policy scenarios
- and Cost is the net health expenditure for the health system perspective analyses, and from the societal perspective adds GDP costs to health system costs.

For example, for a WTP of \$10,000 per HALY from a health system perspective, an incremental loss of HALYs of 500, and \$2,000,000 increased health expenditure (net of the increased cost of treating people with SARS-CoV-2, and the medium to long-run cost savings (discounted at 3%) of fewer people alive with attributable annual health expenditure), then the NMB is  $2,000,000 + (-500 \times 10,000) = -\$3,000,000$ .

This same calculation is completed for all 100 i iterations for each of the four (k) policy-scenarios and j WTP levels. Then within each iteration i and WTP j, the policy scenario with the highest NMB is selected. Across all 100 iterations, each policy response k will have a probability of having the highest NMB, and the policy option with the highest probability is deemed 'optimal' at that WTP. Finally, these outputs can be shown as cost effectiveness acceptability curves, allowing a useful visual interpretation.

## Sensitivity analyses

For HALYs and net health expenditure, they were re-estimated for 0% and 6% discount rates. Our base assumption of an intervention duration (i.e. the time to a vaccine) was 12 months; we reran the PMSLT for 6- and 18-month duration outputs from the ABM.

The main model only considered SARS-CoV-2 events. Whilst the indirect impact of policy restrictions (independent or direct SARS-CoV-2 effects) on other health events is uncertain, it seems likely that there are impacts on mental health (deleterious for depression and anxiety, but neutral for suicides) and reduced road traffic crash (RTC; beneficial). Ideally, one would estimate the counterfactual impacts on these health events at each level (stage) of COVID-19 policy response using published natural experiments using one of: time series analyses of change in conditions incidence or prevalence with changing policy response settings; or comparisons across space of similar jurisdictions under differing policy settings; and best of all these two study designs combined for difference in difference estimates. But this is a major task with, currently, inadequate data. Therefore, as a 'simple' sensitivity analysis to understand the potential impacts, we used the following approaches. First, for RTC we used the association of mobility data with stages experienced in Victoria, and in turn the association of mobility data with Victorian RTC rates (Appendix 4). Second, for depression and anxiety we assumed time spent in at stages 1a, 1b, 2, 3 and 4 had 2%, 4%, 6%, 8% and 10% increases in the age by sex prevalence of depression and anxiety, respectively. These are obviously crude sensitivity analyses and intended to give a rough idea of the magnitude of impact only.

Finally, a key rationale for tight or tight suppression is that by keeping case numbers low, contact tracing is more effective, meaning one can function with lesser social and public health restrictions. We therefore reran the four policy scenarios incorporating a dynamic contact tracing variable that varied with the log of the number of cases per day ( $\% \text{ of contacts identified per day} = 0.586 - \ln(\text{cases per day}) \times 0.06213$ ). Accordingly, the base case of 30% of contacts traced each day was assumed to apply at 100 cases per day, improving to 34% at 50 cases a day, 39% and 25 cases a day, 44% at 10 cases a day and 50% at 4 cases a day.

Findings are reported in accordance with the Consolidated Health Economic Evaluation Reporting Standards (CHEERS) checklist.<sup>12</sup>

## Results

### Impacts of each policy response strategy

The daily numbers of SARS-CoV-2 for 100 runs of each strategy are shown in Figure 2. All strategies saw a decrease in cases in the first two months, then marked stochastic variation in daily numbers (and hence varying times in stages 1a to 4 as shown in Figure 2 by varying the colour of each run's trace).

Table 2 shows the outputs from the ABM in terms of numbers of infections and numbers of days at varying policy stringency. The cumulative number of additional SARS-CoV-2 infections from the starting date over one year were lowest for aggressive elimination (median: 1,530, 90% simulation interval [SI]: 1,150 [i.e. 5th percentile], to 2,030 [(i.e. 95th percentile, across the 100 runs])). Infections were highest at 55,900 for loose suppression (90% SI: 28,700 to 82,300).

Moderate elimination (31.7%, 6.6% to 64.4%) had the greatest percentage of days with the least restrictions (stage 1a) compared to 21.7% for aggressive suppression, 15% and 16% for tight and loose suppression. However, the percentage of days with maximum restrictions (stage 4) was similar across all strategies (medians ranging from 27.5% for moderate elimination to 36.1% for loose suppression – but with wide overlapping 90% SIs). Consequently, given much of the total loss of GDP is driven by Stage 4, whilst moderate elimination had the lowest median GDP loss up to 12 months of \$US41.7 billion (90% SI 29.0 to 63.6), it was similar across strategies when allowing for the wide SIs.

Table 3 shows that deaths varied by stage pro-rata with the above infections. The crude case fatality rate is about 4% across scenarios, reflection the concentration of cases in aged care during the Victorian second wave. Table 3 also gives the net health losses in HALYs for each scenario compared to BAU. Lifetime HALY losses, discounted at 3% annually, were similar for aggressive elimination (286, 90% SI 219 to 389) and moderate elimination (314, 228 to 413), and 7 ½ and 36-times higher for tight and loose suppression. Net health expenditure differences compared to BAU varied over the time horizon, with expenditure in the first year increasing by \$US2.71 million for aggressive elimination (\$1.49 to \$3.82 million) up to \$117 million for loose suppression (\$50 to \$214 million) – largely pro-rata with health loss. However, in out-years health expenditure decreases compared to BAU in all strategies due to fewer people being alive incurring increasing health expenditure as they age, with loose suppression having the greatest ‘savings’ over the remainder of the populations’ lifetimes at \$107 million (3% discount rate).

### Differences between policy responses

Table 4 shows the difference between policy response options, for the median and percentiles of the differences within each of the 100 runs. Unsurprisingly, there were clear differences in health loss with no overlap in 90% SIs for the two elimination options compared to the two suppression options – but overlap in SIs between aggressive and moderate elimination, and between tight and loose suppression. A similar pattern was seen for the health expenditure.



There is considerable stochasticity and overlap between policies in GDP loss, due to the elimination strategies using stage 3 and 4 (where GDP loss compared to BAU is maximal) more readily and early, while the suppression strategies have to move into Stages 3 and 4 frequently to keep infection and case rates within the target range. The net result is widely overlapping SIs for differences with aggressive elimination in GDP for the three other strategies (top panel of Table 4). Therefore, we also determine the percentage of runs in which GDP loss was the greatest: loose suppression had the greatest GDP loss in 44% of simulations, followed by tight suppression at 33% and aggressive elimination at 19% (middle panel of Table 4). Whilst not an exact mirror image, the percentage of runs in which GDP loss was the least was 49% for moderate elimination, followed by aggressive elimination at 23% and both suppression options at 14% each (bottom panel of Table 4).

Figure 3 shows the cost effectiveness acceptability curves for the four strategies. From a health system perspective, loose suppression has the highest probability of being 'optimal' up to \$10,000 per HALY (i.e. has highest net monetary benefit across the four policy options). Interventions tend to be considered cost-effective up to approximately GDP per capita per HALY in high income countries, which is about US\$55,000 for Australia; for WTP greater than \$15,000 per HALY, aggressive elimination is optimal in 64% of simulations above a willingness to pay of \$15,000 per HALY, followed by moderate elimination in 35% of simulations.

From a partial societal perspective (i.e. now treating costs as that in the health system plus GDP (which largely means GDP, alone because it is orders of magnitude greater than the health expenditure impacts)), moderate elimination is optimal for half the simulations regardless of WTP in the \$0 to \$500,000 per HALY range, and aggressive elimination is optimal a quarter of the time. There is, however, a 10% to 15% probability of either tight or loose suppression being optimal, highlighting the uncertainty in estimates.

### Sensitivity analyses

Results for the sensitivity analyses are shown in Supplementary Table 5, all conducted (including the baseline) using the median number of infections from the ABM propagated through the PMSLT as one 'expected or median value' run. (Monte Carlo simulation not feasible for sensitivity analyses due to long model run times.) Varying the discount rate to 0% and 6% altered HALYs and costs predictably and did not alter relativities between the policies. Also shown in Supplementary Table 5 is which policy is optimal (i.e. highest net monetary benefit) for the one median value run: from a health system

perspective aggressive elimination is optimal above a WTP of \$15,000 per HALY regardless of the discount rate, and moderate elimination is always optimal from a partial societal perspective.

Lessening the intervention duration to 6 months (i.e. as though the pandemic was over at six months due to early provision of vaccination), or lengthening it to 18 months duration, unsurprisingly decreased and increased the health losses and GDP losses. It also resulted in loose suppression displacing moderate elimination as optimal from a partial societal perspective for a 6-month intervention duration (Supplementary Table 5 and Supplementary Figure 1 **Error! Reference source not found.**).

Including RTC in the model (in addition to just SARS-CoV-2 infection) saw health gains of about 900 HALYs for both elimination strategies. Conversely, including depression and anxiety saw further increases the health loss. Noting the speculative nature of these disease-scenario analyses, the combined effect of adding in RTC, depression and anxiety was health gains in the two elimination strategies (due to RTC decreases tipping the balance), but little relative impact on the health loss for loose suppression (due to SARS-CoV-2 health loss being much larger than any countervailing force of RTC). That all said, the optimal strategy from a health system perspective remained one of the elimination strategies and from a partial societal perspective was always moderate elimination.

The contact tracing scenario modelled an improving performance of contact tracing at lower daily caseloads. The accuracy of the actual specification is moot; more important are the patterns. HALY health loss changed little in an absolute sense for the elimination strategies but increased by 1390 and 1600 for tight and loose suppression.

## Discussion

This study assesses both the health and economic impacts of (usually counterfactual) COVID-19 policy response strategies. There are several important findings. First, there is large stochastic variation in SARS-CoV-2 infections between runs of the same strategy (Figure 2). Second, there was little difference in the median GDP loss across strategies – as elimination strategies use Stage 3 and 4 lockdowns as lower thresholds, whereas suppression strategies are forced to use Stage 3 and 4 to keep infections in the target range. Further, the GDP impacts are very uncertain due to stochastic and other sources of uncertainty. Comparing across countries, however, Baker et al found some suggestion that GDP loss during 2020 as estimated by the IMF has been lower in countries using elimination as opposed to suppression strategies.<sup>13</sup> Loose suppression in our study had the largest probability (44%) of having the highest GDP loss, tight suppression had a 33% probability and aggressive elimination still had a 19%

probability of the highest GDP loss. Third, the strategy with the highest net monetary benefit (and hence 'optimal' on cost-effectiveness grounds) strategy was aggressive elimination from a health system perspective and moderate elimination from a partial societal perspective; importantly, the two elimination strategies were the two most optimal strategies at usual WTP thresholds. Fourth, reducing the intervention duration from 12 to six months (approximating most people vaccinated in six months) saw loose suppression displace moderate elimination as optimal from a partial societal perspective – offering some support for countries that have high rates currently (e.g. UK, USA, Spain, France) to 'ride it out' with short lock-downs to keep infection rates in check until the vaccine arrives (rather than use long lock-downs to drive rates very low as with tight suppression).

Compared to the scant cost-effectiveness literature on COVID-19 policy responses so far<sup>4,5</sup>, our study offers improvements. First, to the best of our knowledge our study is the only one that uses an ABM to simulate dynamic policy regimes that move up and down stages based on triggers of daily case numbers, and captures the large stochastic variation in how case numbers evolve. Other model frameworks use rapid approaches<sup>14</sup>, decision-tree and Markov or a variation of a dynamic (SIR-style) model which allow for only limited consideration of these considerations (e.g.<sup>3</sup>). Next, our consideration of both health costs and GDP impacts resulting from social policies put into place take us beyond a limited health sector perspective.<sup>15</sup> A previous Australian analysis has also found that elimination is better for both health and economic outcomes<sup>16</sup>, but was not as sophisticated as our study in allowing for dynamic policy settings, other disease sequelae, and viral reincursion (due to border breaches). Interestingly, our results echo somewhat a US study finding that social distancing is a cost-effective strategy relative to herd immunity if an effective therapy or vaccine can be introduced within a reasonable (under 12 months) time-frame.<sup>14</sup>

Our study also forces us to confront the reality that the outcomes of COVID-19 policy responses are very uncertain due to both stochastic uncertainty (i.e. chance occurrences of who contacts who, leading to highly variable epidemic curves) and uncertain knowledge about the impact of masks, apps, behaviour, and other interventions. Whilst stochastic uncertainty will persist despite improved knowledge, there are other aspects that may improve with better knowledge. First, contact tracing is improving as the pandemic progresses, which will favour elimination strategies assuming that contact tracing is most effective when caseloads are low. Second, it is strongly suspected (but hard to quantify) that unintended consequences of policy responses on non-SARS-CoV-2 health outcomes and long-COVID are important. For example, in plausible sensitivity analyses we used for RTC and depression and anxiety,

the net health impact for elimination strategies with low SARS-CoV-2 caseloads can vary markedly in percentage terms.

Whilst the world is ramping up vaccine rollouts, this will take time and future resurgences are likely. Our study suggests that for those countries with an option to pursue or retain elimination (or reclaim following an incursion of SARS-CoV-2), that an elimination strategy is optimal from both health and partial societal perspectives and typical WTP thresholds per HALY. A priority is to now quantify, through updated modelling, the best combination of vaccination strategies and other control policies (eg, physical distancing and mask use policies).

## References

1. Hsiang S, Allen D, Annan-Phan S, et al. The effect of large-scale anti-contagion policies on the COVID-19 pandemic. *Nature* 2020; **584**(7820): 262-7.
2. Zala D, Mosweu I, Critchlow S, Romeo R, McCrone P. Costing the COVID-19 Pandemic: An Exploratory Economic Evaluation of Hypothetical Suppression Policy in the United Kingdom. *Value Health* 2020; **23**(11): 1432-7.
3. Padula W, Malaviya S, Reid N, Tierce J, Alexander C. Economic Value of Treatment and Vaccine to Address the COVID-19 Pandemic: A U.S. Cost-effectiveness and Budget Impact Analysis. *Lancet Infectious Diseases* under review.
4. Rezapour A, Souresrafil A, Peighambari MM, Heidarali M, Tashakori-Miyanroudi M. Economic evaluation of programs against COVID-19: A systematic review. *Int J Surg* 2020; **85**: 10-8.
5. Neumann P, Cohen J, Kim D, Ollendorf D. Consideration of value-based pricing for treatments and vaccines is important, even in the COVID-19 pandemic. *Health Aff* 2020; **39**.
6. Blakely T, Thompson J, Carvalho N, Bablani L, Wilson N, Stevenson M. The probability of the 6-week lockdown in Victoria (commencing 9 July 2020) achieving elimination of community transmission of SARS-CoV-2. *Med J Aust* 2020; **213**(8): 349-51 e1.
7. Thompson J. ODD Protocol for the Australia NZ COVID-19 Agent-Based Model. 2020. <https://github.com/JTHooker/COVIDModel/blob/master/ODD%20Protocol%20Aus%20NZ%20COVID19%20model.pdf> (accessed 23 August 2020).
8. Thompson J, Stevenson M, Blakely T, McClure R. Emerging from lockdown: modelling, outputs and assumptions. Department of Human and Health Services, Victorian Government; 2020.
9. Thompson J, Stevenson M, Blakely T, McClure R. Modelling Victoria's escape from COVID-19. In: Pursuit T, editor. Melbourne: University of Melbourne; 2020.
10. Barendregt JJ, Van Oortmarsen GJ, Van Hout BA, Van Den Bosch JM, Bonneux L. Coping with multiple morbidity in a life table. *Math Popul Stud* 1998; **7**(1): 29-49, 109.
11. Blakely T, Moss R, Collins J, et al. Proportional multistate lifetable modelling of preventive interventions: concepts, code and worked examples. *Int J Epidemiol* 2020: 1-13.
12. Husereau D, Drummond M, Petrou S, et al. Consolidated Health Economic Evaluation Reporting Standards (CHEERS)--explanation and elaboration: a report of the ISPOR Health Economic Evaluation Publication Guidelines Good Reporting Practices Task Force. *Value in health : the journal of the International Society for Pharmacoeconomics and Outcomes Research* 2013; **16**(2): 231-50.
13. Baker M, Wilson N, Blakely T. Elimination may be the optimal response strategy for covid-19 and other emerging pandemic diseases. *BMJ* in press.
14. Schonberger RB, Listokin YJ, Ayres I, Yaesoubi R, Shelley ZR. Cost Benefit Analysis of Limited Reopening Relative to a Herd Immunity Strategy or Shelter in Place for SARS-CoV-2 in the United States. *medRxiv* 2020.
15. Neumann P, Cohen JT, Kim DD, Ollendorf DA. Consideration Of Value-Based Pricing For Treatments And Vaccines Is Important, Even In The COVID-19 Pandemic. *Health Aff (Millwood)* 2020: 101377hlthaff202001548.
16. Grafton Q, Kompas T, Parslow J, Glass K, Banks E, Lokuge K. Health and Economic Effects of COVID-19 control in Australia: Modelling and quantifying the payoffs of 'hard' versus 'soft' lockdown. *MJA* 2020.

**Table 1: Conceptualisation and specification of the triggers to shift between stages by policy scenario**

1. Aggressive elimination †	2. Moderate elimination †	3. Tight suppression (aiming for 1 to 5 cases per million population per day)‡	4. Loose suppression (aiming for 5 to 25 cases per million population per day)‡
<b>First, check for tightening (below rules applied on each day, regardless of Stage currently in)</b>			
<p>If in Stage 3 or lower, and average &gt;7.5 cases per day for last 7 days, go to Stage 4                      Else:                      If in Stage 2 or lower, and average &gt; 1.5 cases per day for last 7 days, go to Stage 3                      Else:                      If in Stage 1b or 1, and two or more cases in last 14 days, go to Stage 2                      Else:                      If in Stage 1, and any single case, go to Stage 1b                      Else:                      Stay in same stage.</p>	<p>If in Stage 3 or lower, and average &gt;30 cases per day for last 7 days, go to Stage 4                      Else:                      If in Stage 2 or lower, and average &gt; 6 cases per day for last 7 days, go to Stage 3                      Else:                      If in Stage 1b or 1, and five or more cases in last 14 days, go to Stage 2                      Else:                      If in Stage 1, and two or more cases in last 14 days, go to Stage 1b                      Else:                      Stay in same stage</p>	<p>If &gt;20 per million in last 7 days, go to Stage 4.                      Else:                      If &gt; 10 per million in last 7 days, go to Stage 3.                      Else:                      If average of &gt;5 per million in last 7 days, <u>and</u> &gt; 6 days since last tightening, tighten 1 stage                      Else:                      Stay in same stage</p>	<p>If &gt;100 per million per day in last 7 days, go to Stage 4.                      Else:                      If &gt; 50 per million per day in last 7 days, go to Stage 3.                      Else:                      If average of &gt;25 per million per day in last 7 days, <u>and</u> &gt; 6 days since last tightening, tighten 1 stage                      Else:                      Stay in same stage</p>
<b>Second, check for loosening</b>			
<p>If in Stage 4, and average &lt;5 cases per day for last 7 days, and &gt; 20 days since last loosening, go to Stage 3                      Else:                      If in Stage 3, and average &lt; 1 case per day for last 7 days, and &gt; 20 days since last loosening, go to Stage 2                      Else:                      If in Stage 2, and zero cases for last 7 days, and &gt; 20 days since last loosening, go to Stage 1b                      Else:                      If in Stage 1b, and zero cases for last 28 days and &gt; 20 days since last loosening, go to Stage 1                      Else:                      Stay in same stage</p>	<p>If in Stage 4, and average &lt;20 cases per day for last 7 days, and &gt; 20 days since last loosening, go to Stage 3                      Else:                      If in Stage 3, and average &lt; 5 cases per day for last 7 days, and &gt; 20 days since last loosening, go to Stage 2                      Else:                      If in Stage 2, and &lt;1 case per day for last 7 days, and &gt; 20 days since last loosening, go to Stage 1b                      Else:                      If in Stage 1b, and zero cases for last 7 days and &gt; 20 days since last loosening, go to Stage 1                      Else:                      Stay in same stage</p>	<p>If average of &lt;2.5 per million in last 7 days, and &gt; 20 days since last loosening, loosen 1 stage                      Else:                      Stay in same stage</p>	<p>If average of &lt;12.5 per million per day in last 7 days, and &gt; 20 days since last loosening, loosen 1 stage                      Else:                      Stay in same stage</p>

‡ 1 case per million per day equates to an expected 6.4 cases per day in Victoria. A flow diagram of tight suppression is given in Figure 1.

**Table 2: Outputs from ABM, and estimated GDP loss, for ‘best’ scenario: 12 months intervention or ABM time horizon (i.e. assumed vaccination available in 12 months); 1% probability per day of incursion of infected person into Victoria in elimination strategies**

	<b>Strategy</b>	<b>a) Aggressive elimination</b>	<b>b) Moderate elimination</b>	<b>c) Tight Suppression</b>	<b>d) Loose suppression</b>
SARS-CoV-2 cases (90% UI)	In first month	1,330 (1,040 – 1,580)	1,350 (1,110 – 1,600)	1,260 (1,020 – 1,500)	1,260 (1,090 – 1,540)
	Month 2-6 incl	173 (49 – 557)	229 (50 – 642)	4,570 (943 – 13,300)	23,200 (119 – 37,700)
	Month 7-12 incl	18 (0 – 54)	34 (0 – 104)	5,640 (1,070 – 21,600)	35,100 (6,160 – 48,900)
	Month 13-18 incl	13 (0 – 55)	31 (0 – 93)	4,160 (17 – 19,600)	9,940 (128 – 71,800)
	<i>Up to 12 months</i>	1,530 (1,150 – 2,030)	1,650 (1,240 – 2,110)	11,700 (6,520 – 32,200)	55,900 (28,700 – 82,300)
	<i>Up to 18 months for scenario</i>	1,540 (1,150 – 2,050)	1,680 (1,280 – 2,180)	17,900 (6,970 – 41,700)	77,100 (35,900 – 129,000)
Percentage (90% UI) of days in each level	1a	21.7% (2.1% - 53.9%)	31.7% (6.6% - 64.4%)	15.1% (5.3% - 39.7%)	16.3% (5.0% - 40.9%)
	1b	16.3% (8.1% - 25.6%)	11.9% (5.8% - 22.8%)	13.9% (10.3% - 18.7%)	14.4% (11.2% - 32.6%)
	2	12.1% (5.8% - 19.7%)	13.8% (5.8% - 21.9%)	12.8% (11.7% - 21.4%)	11.7% (11.5% - 19.7%)
	3	18.3% (8.1% - 27.2%)	16.4% (8.1% - 26.7%)	15.7% (13.3% - 25.0%)	14.7% (12.2% - 20.8%)
	4	30.3% (18.0% - 41.2%)	27.5% (15.8% - 33.7%)	34.3% (20.0% - 49.5%)	36.1% (22.4% - 46.2%)
Estimated GDP loss (90% UI)	In first month	7.9 (5.8 – 10.8)	7.9 (5.8 – 10.8)	7.9 (5.8 – 10.8)	7.9 (5.8 – 10.8)
	Month 2-6 incl	22.6 (15.8 – 36.7)	21.1 (14.0 – 33.6)	19.3 (12.1 – 26.6)	17.5 (11.1 – 25.2)
	Month 7-12 incl	15.6 (7.4 – 25.6)	13.3 (7.0 – 22.8)	23.2 (11.4 – 37.7)	25.3 (11.6 – 34.8)
	Month 13-18 incl	15.4 (7.9 – 25.8)	14.6 (7.7 – 22.5)	21.3 (7.7 – 32.4)	17.4 (7.4 – 33.1)
	<i>Up to 12 months</i>	46.5 (31.9 – 67.6)	41.7 (29.0 – 63.6)	50.9 (35.2 – 70.2)	50.2 (35.1 – 72.5)
	<i>Up to 18 months for scenario</i>	61.3 (45.5 – 89.6)	56.7 (39.9 – 79.2)	71.7 (46.9 – 93.3)	67.5 (44.3 – 97.4)

**Table 3: Estimate incremental health loss (HALYs) loss compared to BAU (i.e. no SARS-CoV-2 pandemic) and additional health expenditure (3% discount rate)**

	Strategy	a) Aggressive elimination	b) Moderate elimination	c) Tight Suppression	d) Loose suppression
SARS-CoV-2 deaths	1 <sup>st</sup> yr	58 (46, 82)	64 (46, 88)	483 (245, 1,358)	2,249 (1,022, 3,555)
HALYs loss (90% UI)	1 <sup>st</sup> yr	38 (29, 50)	41 (30, 54)	156 (98, 364)	672 (337, 954)
	2 <sup>nd</sup> yr	71 (54, 94)	76 (56, 101)	436 (246, 1,120)	1,990 (1,020, 2,960)
	Full 20 years	272 (204, 363)	289 (215, 386)	1,950 (1,100, 6,100)	11,900 (4,730, 15,500)
	Rest of lifetime	286 (219, 389)	314 (228, 413)	2,263 (1,180, 6,550)	11,000 (5,030, 16,700)
Net health expenditure (in \$US millions; 90% UI)	1 <sup>st</sup> yr	2.71 (1.49, 3.82)	2.88 (1.69, 4.61)	24.6 (10.4, 75.3)	117 (50, 214)
	2 <sup>nd</sup> yr	2.00 (0.994, 2.99)	2.10 (1.12, 3.61)	19.2 (7.19, 59.1)	89.0 (33.1, 169)
	Full 20 years	-2.54 (-3.95, -1.68)	-2.77 (-3.88, -1.79)	-18.5 (-51.5, -8.23)	-90.2 (-153, -30.6)
	Rest of lifetime	-2.99 (-4.45, -2.00)	-3.19 (-4.51, -2.22)	-22.4 (-60.1, -9.92)	-107 (-175, -41.7)



**Table 4: Differences in main outputs between the policies for 12 month intervention period (90% UI of the differences calculated within each run, ensuring each within-run comparison is subject only to stochastic variability and PMSLT input parameter uncertainty**

Strategy	a) Aggressive elimination	b) Moderate elimination	c) Tight Suppression	d) Loose suppression
<b><i>Compared to aggressive elimination</i></b>				
HALYs <u>loss</u> lifetime	0 (ref)	21 (-90 to 129)	1927 (871 to 6249)	10661 (4776 to 16396)
Net health expenditure lifetime (\$US millions)	0 (ref)	-0.2 (-1.3 to 0.9)	-19.2 (-57.4 to -7.4)	-103.2 (-172.8 to -40.2)
Estimated GDP <u>loss</u> (\$US billions)	0 (ref)	-5.2 (-18.6 to 11.0)	3.3 (-12.1 to 23.6)	4.3 (-15.9 to 19.4)
<b><i>Probability of being largest across policies</i></b>				
HALYs <u>loss</u> lifetime	0%	0%	7%	93%
Net health expenditure lifetime	62%	37%	0%	1%
Estimated GDP <u>loss</u> (\$US billions)	19%	4%	33%	44%
<b><i>Probability of being smallest across policies</i></b>				
HALYs <u>loss</u> lifetime	63%	36%	0%	1%
Net health expenditure lifetime	0%	0%	7%	93%
Estimated GDP <u>loss</u>	23%	49%	14%	14%

Figure 1: Stages and triggers for tight suppression

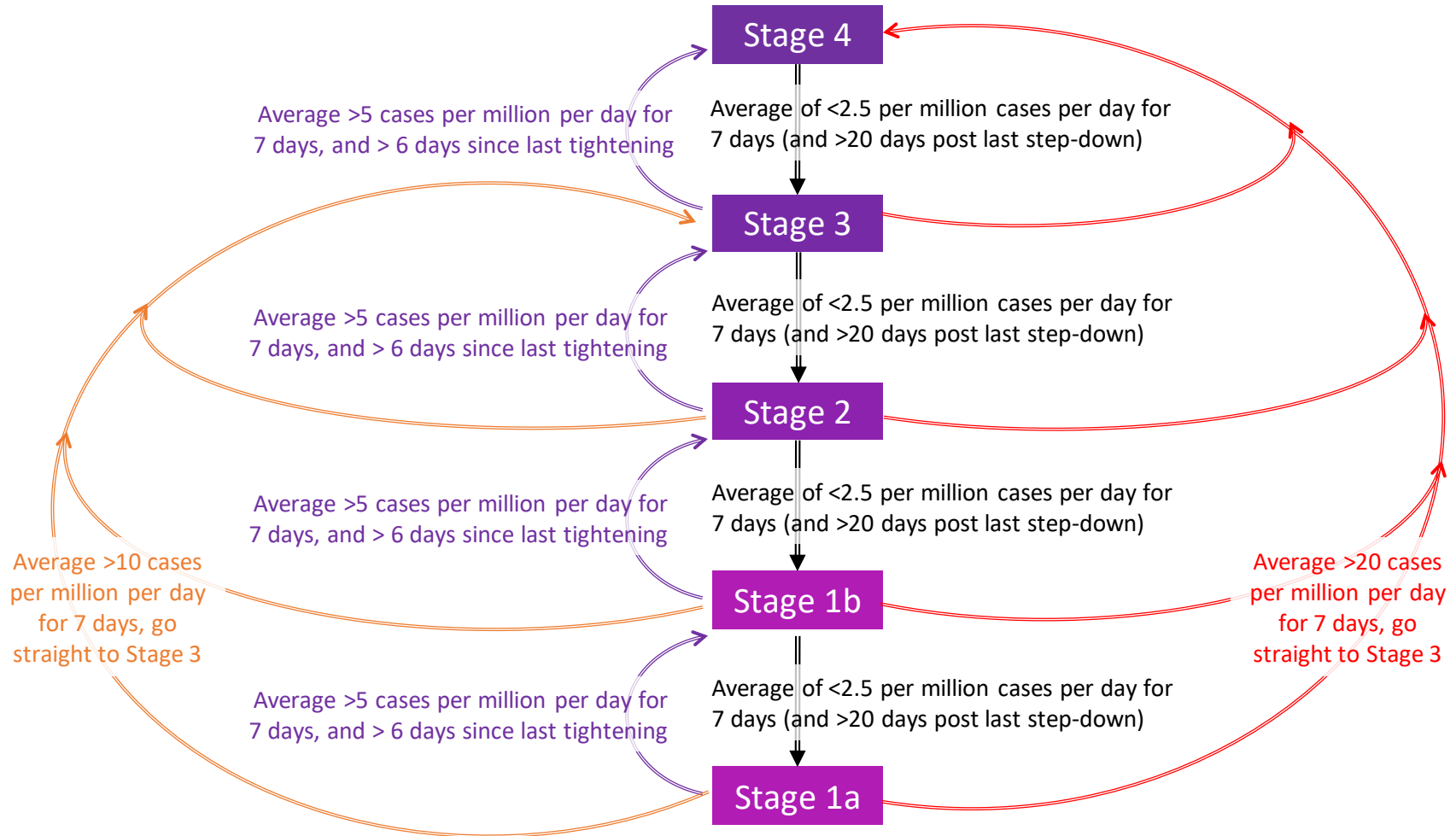
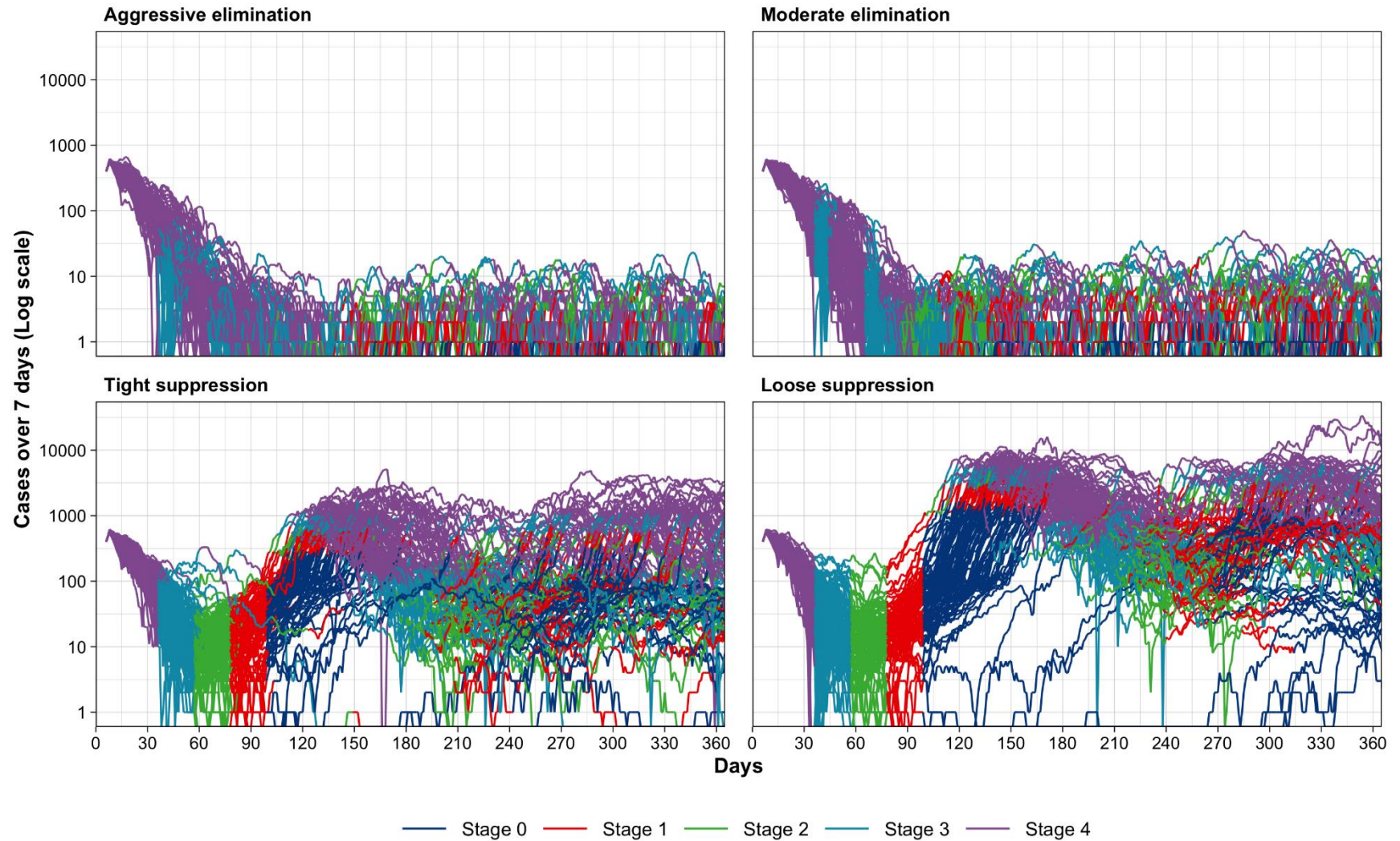
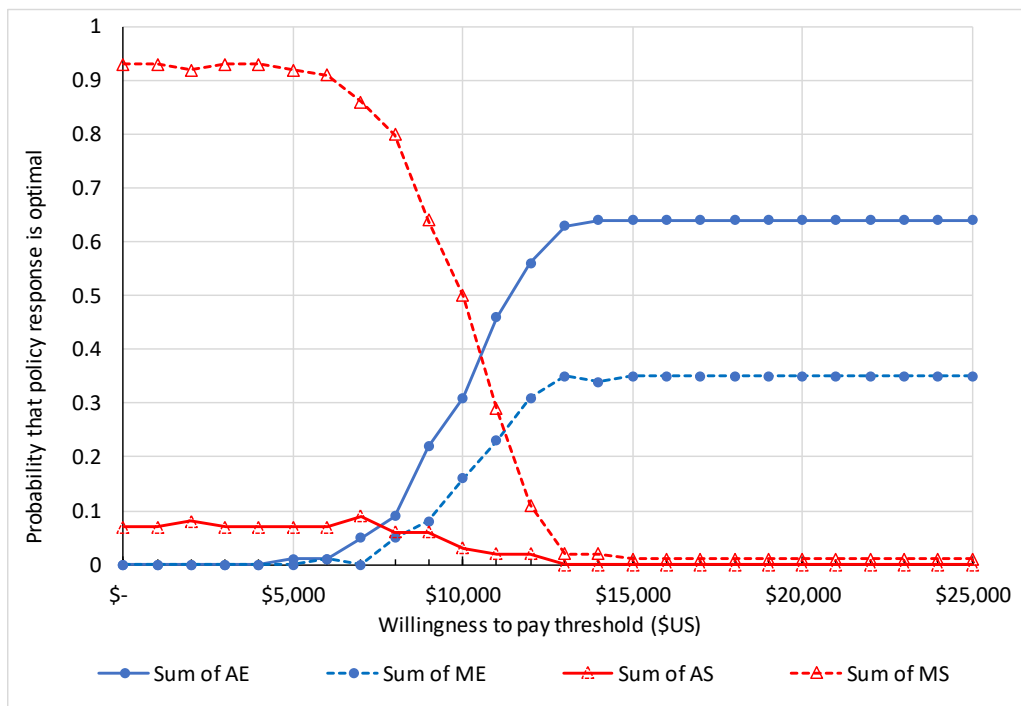


Figure 2: Daily cases per day for 100 runs of each of the four policy responses (colours of each line demonstrate the stage each run was in by day)



**Figure 3: Cost effectiveness acceptability curves:**

**a: health system perspective**



**b: partial societal perspective**

