

Online supplement

Table of contents

Table of contents..... 1

Supplemental methods 2

 Infection prevention practices..... 2

 Statistical analysis..... 2

 Example of survey (original and translated)..... 3

Supplemental results..... **Fout! Bladwijzer niet gedefinieerd.**

 Phylogenetic results **Fout! Bladwijzer niet gedefinieerd.**

Supplemental figures 8

 Figure S1 8

 Figure S2 13

 Figure S3 17

 Figure S4 18

Supplemental table 19

 Table S1 19

References..... 22

Supplemental methods

Infection prevention practices

At the peak of the epidemic, both hospitals accommodated three regular care Covid-19 wards (from now on referred as Covid-19 wards) in addition to Covid-19 intensive care units in both hospitals. Suspected and confirmed Covid-19 patients were cared for on dedicated Covid-19 wards in droplet and contact isolation, in addition to standard precautions. No visitors were allowed on Covid-19 wards except for those visiting terminally ill patients. From March 23 onwards Covid-19 patients could receive care in cohorts with a maximum of four patients per room. A short E-learning on donning and doffing PPE was mandatory for all HCW caring for patients. Attending a real-life practice simulation training was optional. All ventilation and air pressure conditions on Covid-19 wards were maintained according to national guidelines.(1) Infection control practitioners visited Covid-19 wards each working day during the study period to advice and answer questions of HCW. Until June 1st, SARS-CoV-2 NAAT was available only for symptomatic HCW involved in patient care in addition to suspected Covid-19 cases requiring hospital admission. After this date testing was available for all employees and patients with symptoms suggestive of SARS-CoV-2 infection. There were no critical shortages of PPE in participating hospitals during the study period.

Statistical analysis

We set the start of survival time on February 27 (exactly 4 weeks before the start of this study), since on that day the first Covid-19 patient was diagnosed in the Netherlands.(32) Participants without SARS-CoV-2 infection were censored at the last day of the measurement in which they participated. Cox regression analysis was not performed, since the proportional hazards assumption was not met due to the uneven hazard during the study period. Inclusion targeted a sample size per group of at least 157 participants (including subgroups based on hospital unit type and profession), assuming alpha of 5%, to reach 80% power to detect a infection rate difference of 10% or more.(2) All analyses were performed using R version 4.0, and packages survminer and survival.(3–5)

Example of survey (translated from Dutch)

1) Have you worked in patient care with COVID patients since the second measurement?

-No

-Yes

If answer question 1 = No.

2) What position have you held in the past 4 weeks?

-Administrative assistant

-Policy officer

-Scientist/researcher

-Doctor/nurse outside of patient care

-Doctor / nurse on a ward without COVID patients

-ICT

-Laboratories

-Security

-Other

If answer question 2 = Other

3) What position was that?

.....

4) How many days have you worked in the hospital in the past 4 weeks?

.....

If answer question 1 = Yes

5) In which hospital departments have you had direct contact with COVID patients since the second measurement? Multiple answers possible.

-the emergency room

-the intensive care unit, location where corona patients are also treated

- Ward 1

- Ward 2

- Ward 3

- Ward 4

- Ward 5
- Ward 6
- other corona ward

If answer question 5 = other corona department

6) Which department was this?

.....

If answer question 1 = Yes.

7) In which department have you had the most contact with COVID patients since the second measurement? Only 1 answer is possible here.

- the emergency room
- the intensive care unit, location where corona patients are also treated
- Ward 1
- Ward 2
- Ward 3
- Ward 4
- Ward 5
- Ward 6
- other corona ward

8) Which department was this?

.....

If answer question 1 = Yes.

9) How many times have you been in the room of a patient suspected or proven to be infected with the corona virus (SARS-CoV-2) since the second measurement estimated?

- Not
- 1-5 times
- 6-10 times
- 11-25 times
- 26-50 times
- More than 50 times

If answer question 9 ≠ Not

10) During your own contacts with the patients as mentioned in the previous question, have you always adhered to the infection prevention guidelines (isolation, protective clothing, etc.) as prescribed?

- No
- Yes

11) Have you had any symptoms since the second measurement? Multiple answers possible.

- Fever (>38.5 degrees Celsius)
- Cough (>24 hours)
- Nasal cold (>24 hours)
- Diarrhea (3x a day or more) or vomiting
- Headache (>24 hours)
- Reduced smell and/or taste (24 hours)
- Sore throat (>24 hours)
- Dyspnea
- Chest pain
- None of the above

If answer question 11 \neq None of the above

12) What was approximately the first day of symptoms since the second measurement?

DD-MM-YYYY

If answer question 11 \neq None of the above

13) The next question concerns the severity of symptoms on the day you felt the most ill since the second measurement. Choose the description that best suited your situation that day.

- Despite the complaints I was able to fully perform all my normal activities (for example work and housekeeping).
- Due to the complaints I could no longer perform some normal activities (for example work and housekeeping).
- Due to the complaints, I spent most of the day in bed or on the couch.
- I was admitted to hospital because of the complaints.

If answer question 13 = I was admitted to hospital because of the complaints.

14) In which department have you been admitted?

-In a normal nursing ward

-In a corona ward

-In intensive care

15) Have you been tested for infection with the corona virus (SARS-CoV-2) (by PCR throat / nose swab) since the second measurement?

-No

-Yes

If answer question 15 = Yes

16) How often have you been tested?

.....

If answer question 15 = Yes

17) Was (one of) the test (s) positive?

-No

-Yes

If answer question 17 = Yes

18) What was the approximate date of the first positive test?

DD-MM-YYYY

If answer question 17 = No.

19) What were the approximate dates on which the tests were negative? In case of multiple negative tests, please mention all dates here.

.....

20) Since the second measurement, have you worked with a colleague who had (mild) complaints at that time and who eventually tested positive for infection with the corona virus (SARS-CoV-2) (by means of PCR throat nose swab)?

- No
- Yes

21) Have you had contact outside of work (physical contact, or spent >1 hour in the same room) with someone who at that time had (mild) complaints and who eventually tested positive for infection with the corona virus (SARS-CoV-2) (by PCR throat-nose wat) since the second measurement?

- No
- Yes, it was a roommate
- Yes, it was a different person

If answer question 21 = Yes, it was a different person

22) In what relationship were you with that person?

.....

23) Have you had contact outside of work (physical contact, or spent 1 hour in the same room) with someone who at that time had (mild) complaints with high suspicion of being infected with the coronavirus (SARS-CoV-2) since the second measurement

- No
- Yes, it was a roommate
- Yes, it was a different person

If answer question 23 = Yes, it was a different person

24) In what relationship were you with that person?

.....

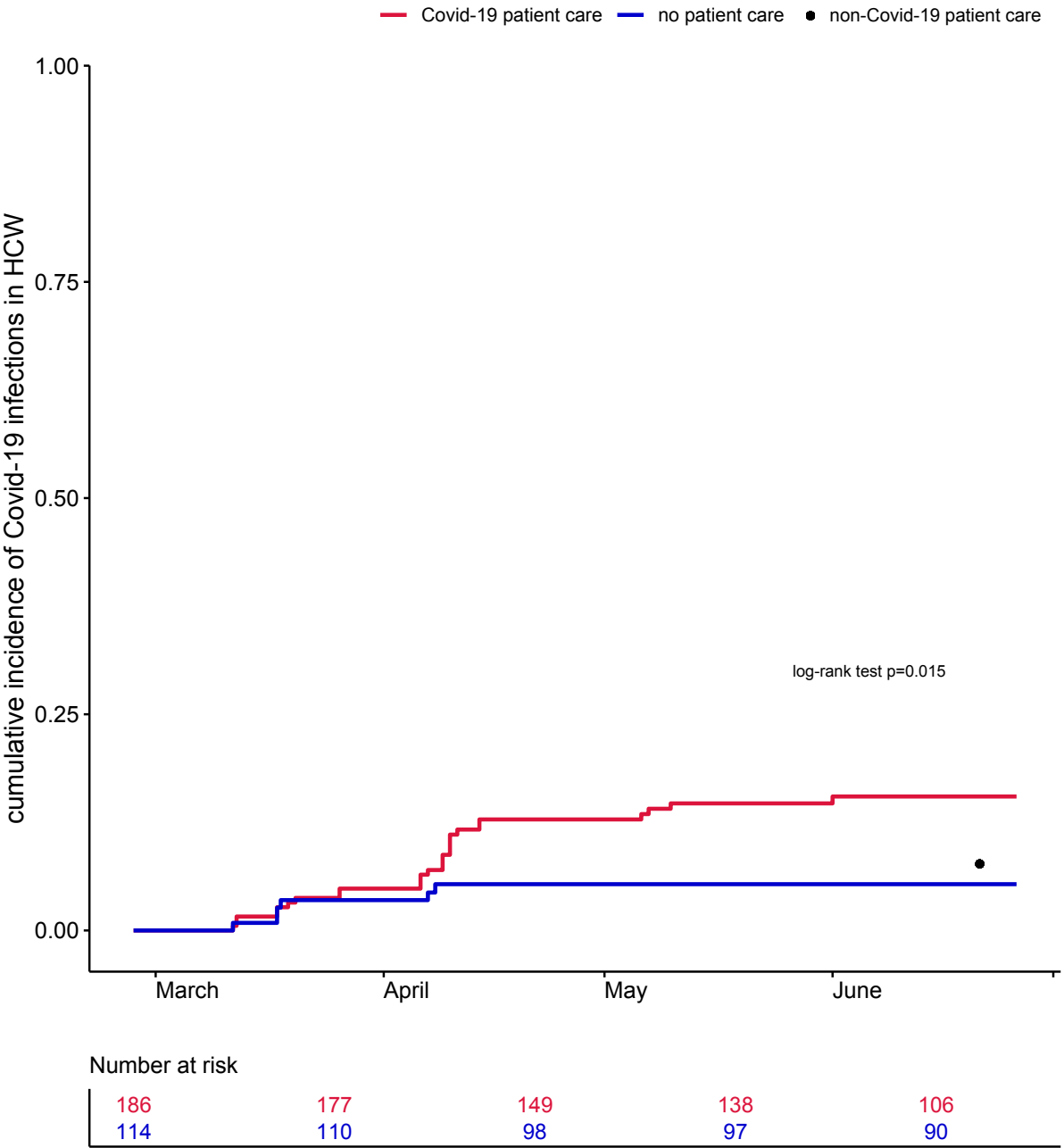
25) How easy is it to stay 1.5 meters away from your direct colleagues at work?

- Very easy
- Simple
- Neutral
- Difficult
- Virtually impossible

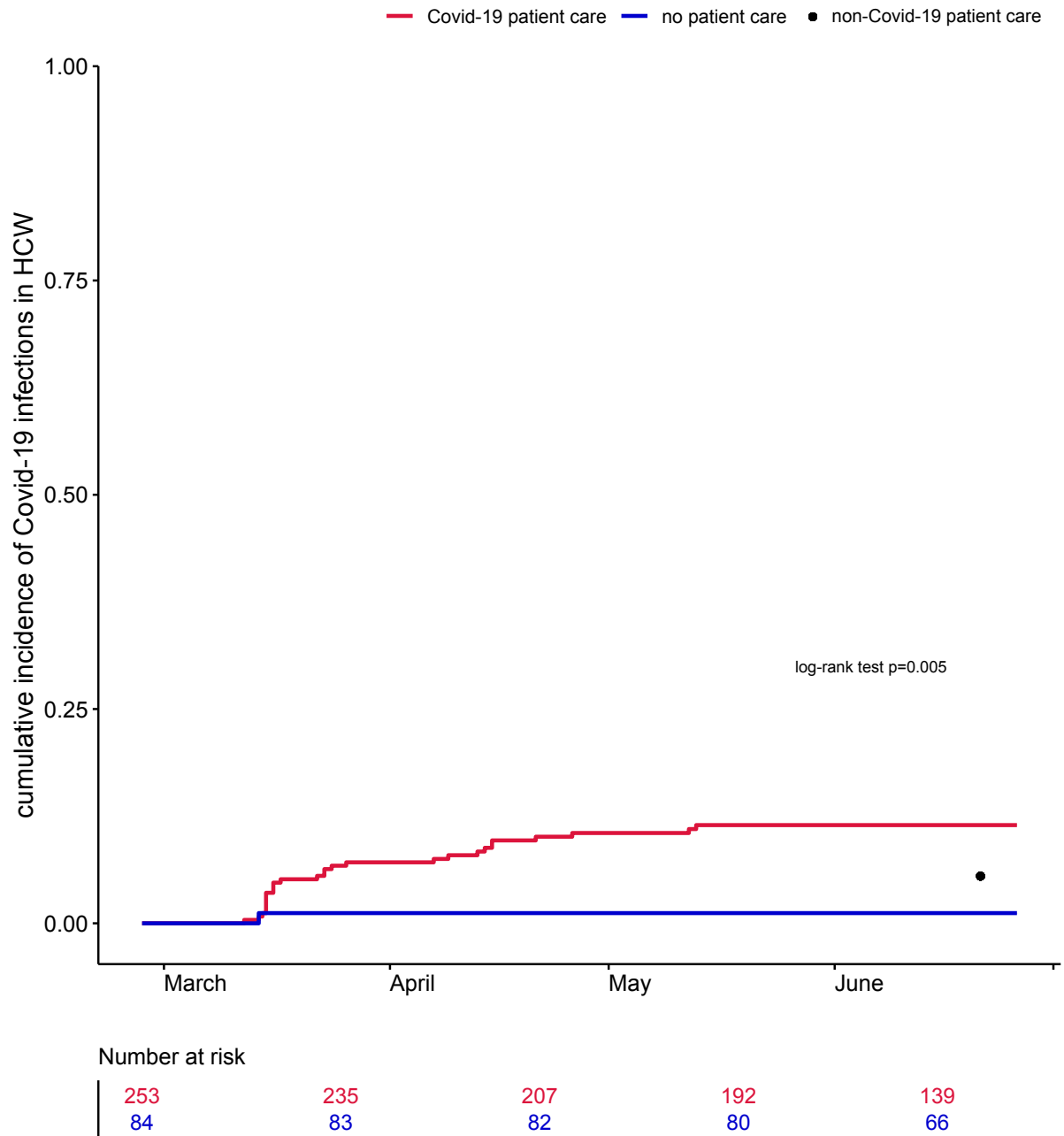
Supplemental figures

Figure S1

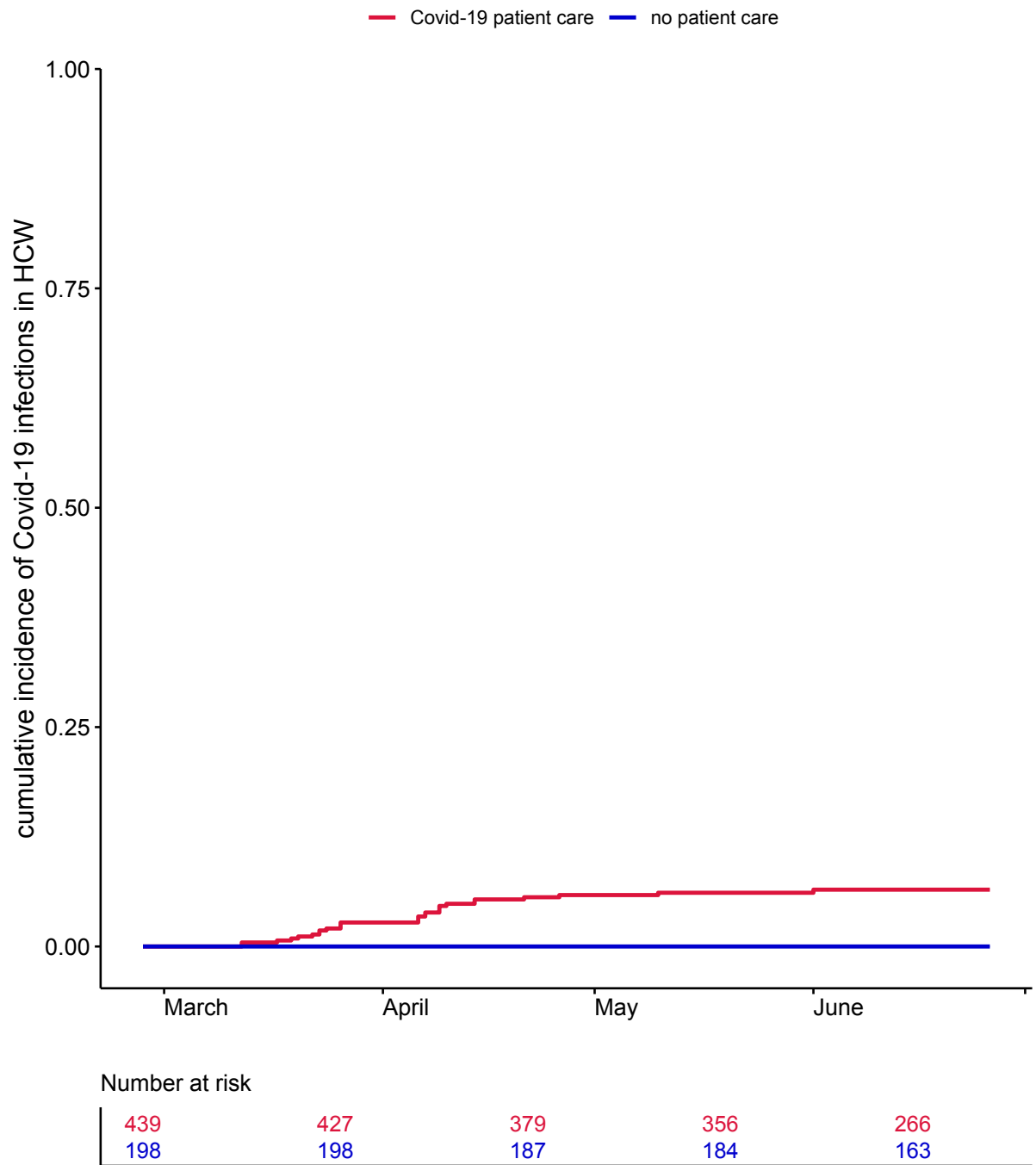
A: Cumulative incidence of SARS-CoV-2 infection in health care workers with different levels of Covid-19 patient exposure for hospital 1



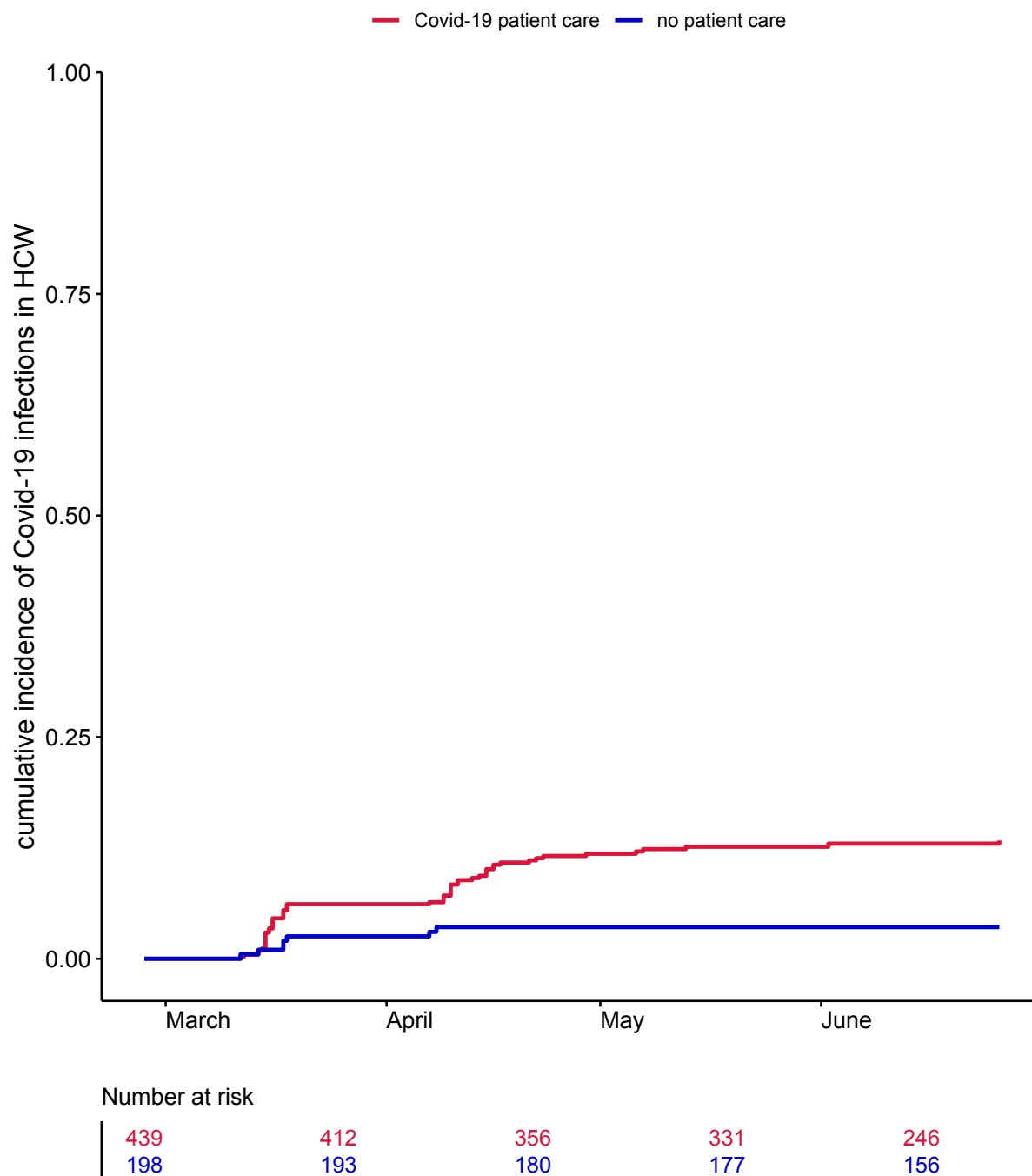
B: Cumulative incidence of SARS-CoV-2 infection in health care workers with different levels of Covid-19 patient exposure for hospital 2



C: Cumulative incidence of SARS-CoV-2 infection in health care workers with different levels of Covid-19 patient exposure based only on nucleic acid amplification test results



D: Cumulative incidence of SARS-CoV-2 infection in health care workers with different levels of Covid-19 patient exposure based only on serologic test results

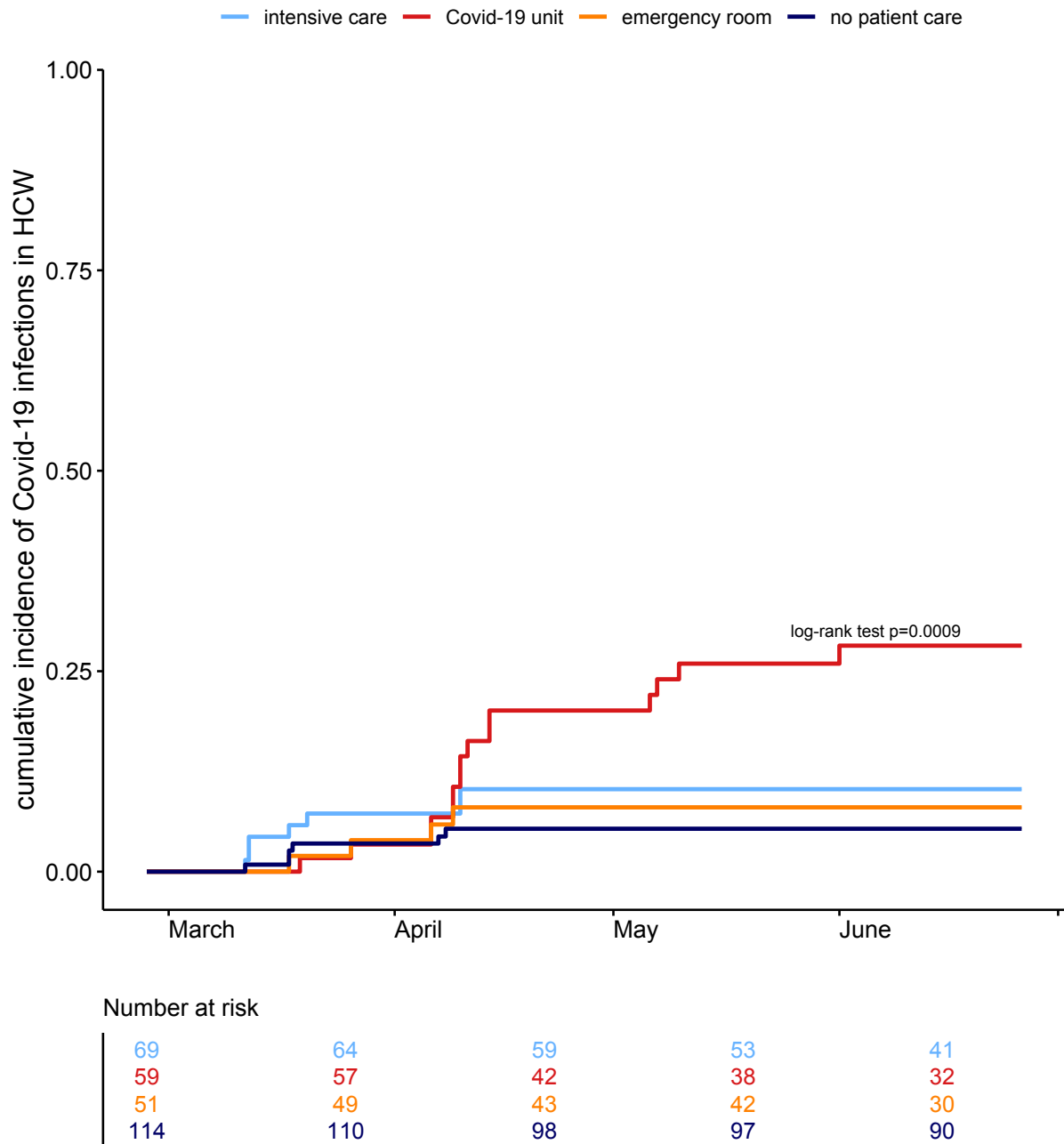


Caption: All participants were assumed to be seronegative on February 27 which was 4 weeks before the first measurement and the day the first Covid-19 patient was diagnosed in the Netherlands. Log-rank test reflects differences between health care workers (HCW) in Covid-19 care and HCW not in patient care (no patient care). A+B: Date of SARS-CoV-2 infection was defined as the sampling date of a first positive nucleic acid amplification test result or, in its absence, the midpoint in time between the last seronegative and the first seropositive sample. HCW in non-Covid-19 patient care (black dot) were included in the fourth measurement only and added to the figures for reference. C+D: Date of SARS-CoV-2 infection was defined as the sampling date of a first positive nucleic acid amplification

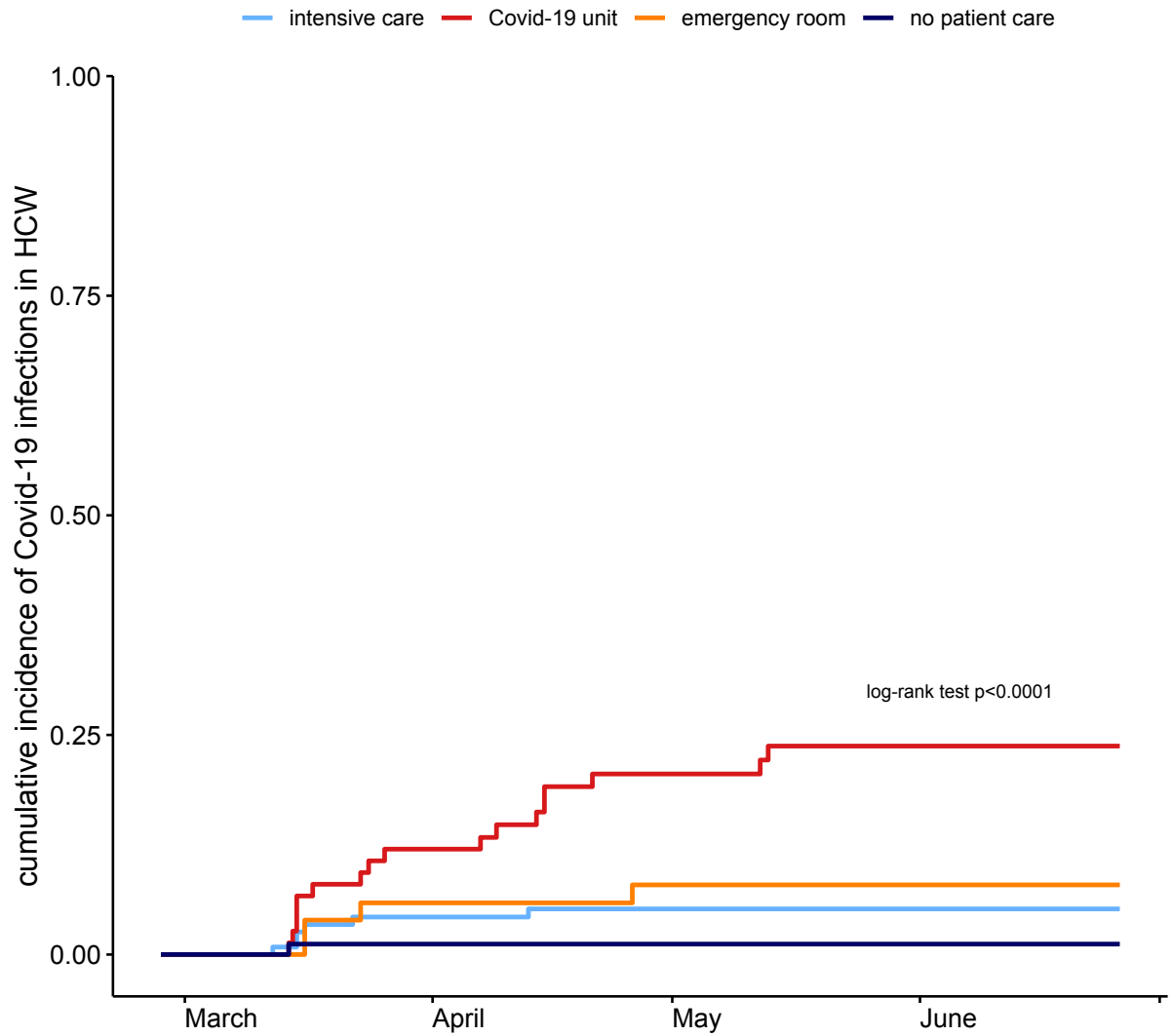
test result (C) or the midpoint in time between the last seronegative and the first seropositive sample (D).

Figure S2

A: Cumulative incidence of SARS-CoV-2 infection in health care workers defined by hospital unit type for hospital 1



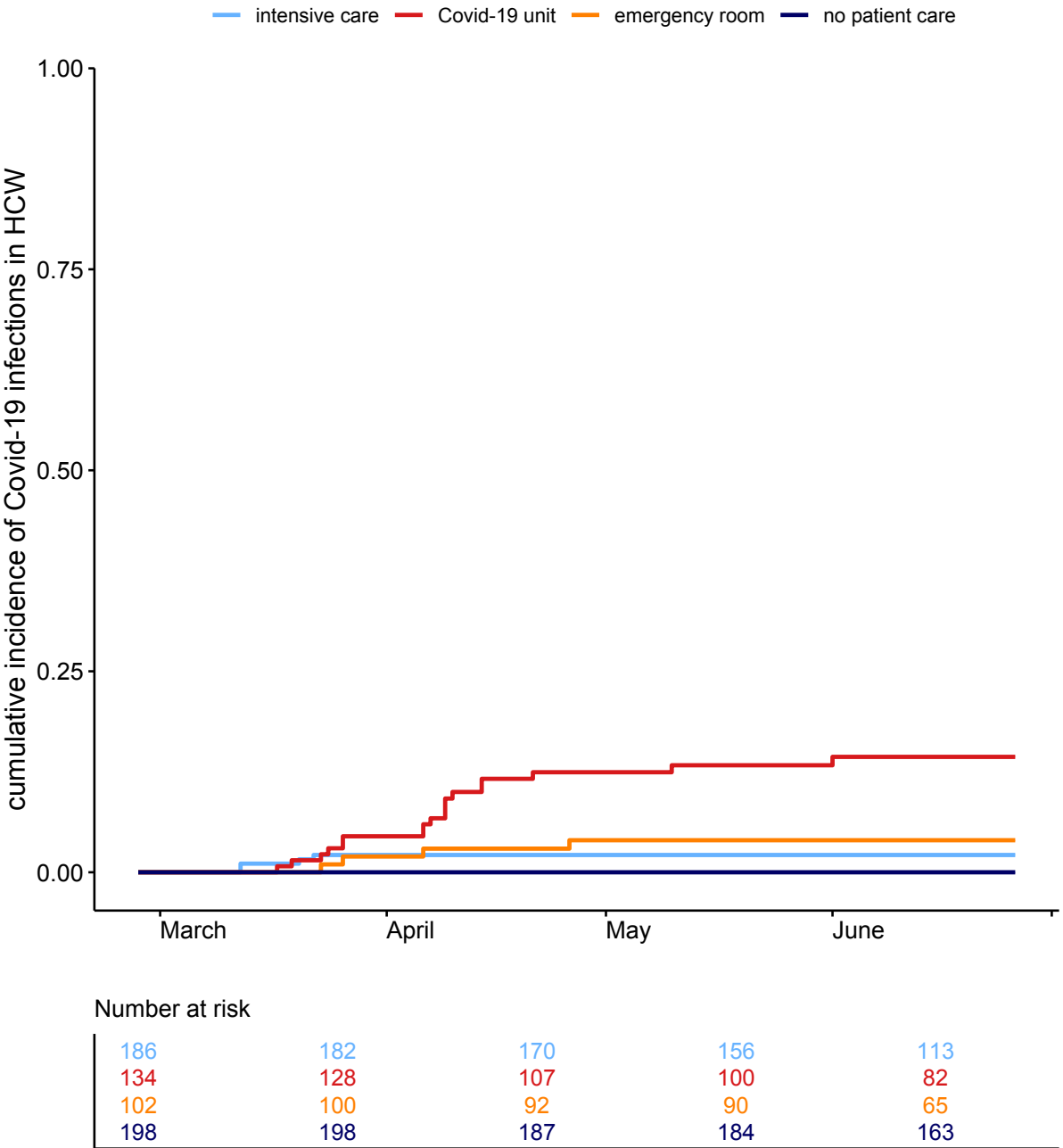
B: Cumulative incidence of SARS-CoV-2 infection in health care workers defined by hospital unit type for hospital 2



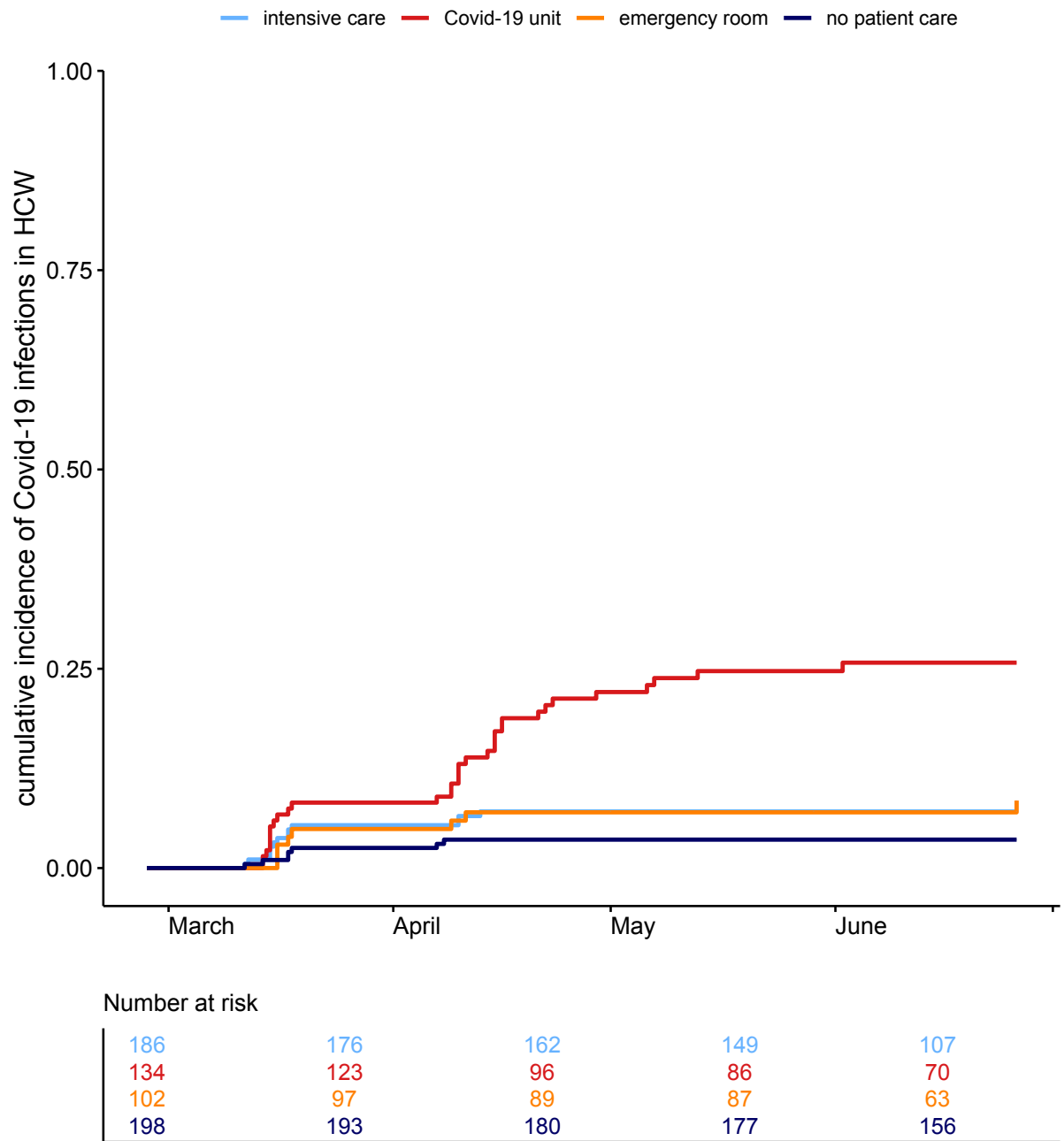
Number at risk

117	112	103	96	66
75	66	55	48	38
51	48	45	44	32
84	83	82	80	66

C: Cumulative incidence of SARS-CoV-2 infection in health care workers defined by hospital unit type based only on nucleic acid amplification test results



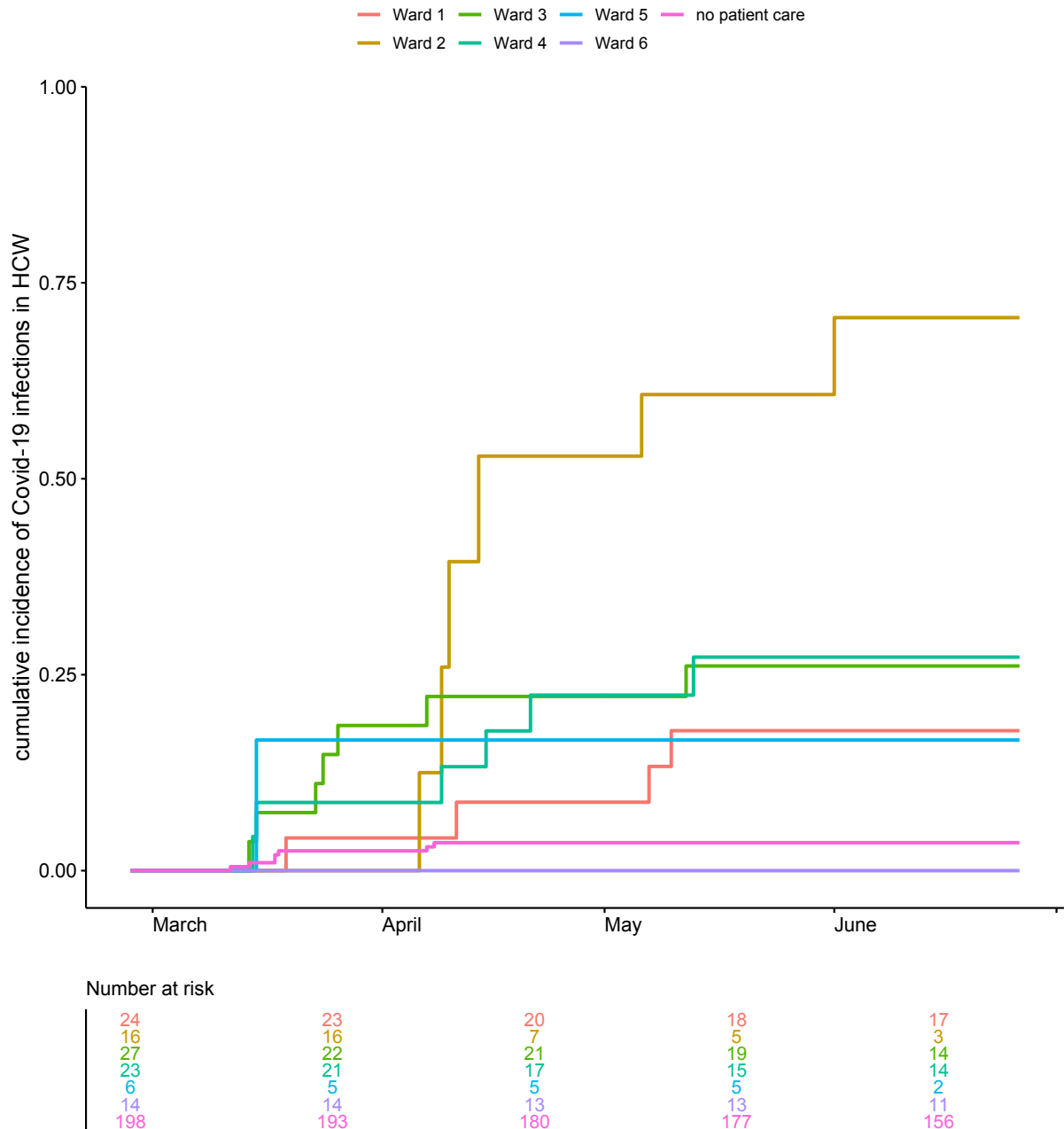
D: Cumulative incidence of SARS-CoV-2 infection in health care workers defined by hospital unit type based only on serologic test results



Caption: Log-rank test reflects differences between all HCW groups shown. Participants working on multiple hospital unit types during the study were excluded from this analysis because of small group size. ICU, intensive care unit.

Figure S3

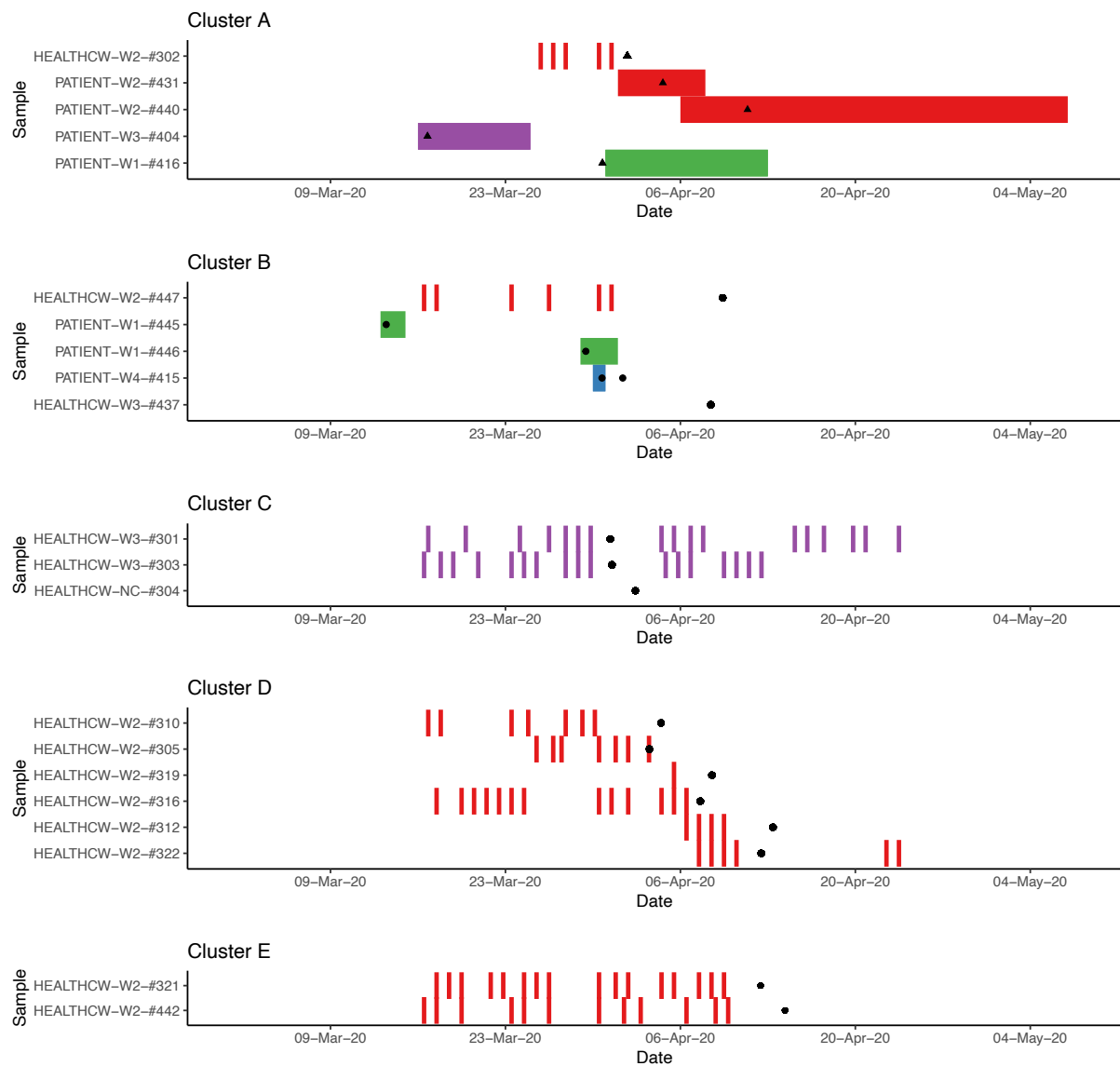
Cumulative incidence of SARS-CoV-2 infection in health care workers per specific Covid-19 regular ward



Caption: All participants were assumed to be seronegative on February 27 which was 4 weeks before the first measurement and the day the first Covid-19 patient was diagnosed in the Netherlands. Date of SARS-CoV-2 infection was defined as the sampling date of a first positive nucleic acid amplification test result or, in its absence, the midpoint in time between the last seronegative and the first seropositive sample.

Figure S4

Working shifts and admittance dates of individuals identified in each transmission cluster



Caption: Panels show timeline of working shifts and admittance of health care workers and patients respectively. Black symbols (triangles for health care workers, circles for patient) denote the date of positive nucleic acid amplification test. The missing timelines in Cluster B and C are due to unknown shift schedules of the HCW. There was a lack of clear epidemiological links between patients in clusters A and B i.e., no overlapping admission dates) with at least 1 HCW working shift or patient admission at the same ward while two patients in cluster A did have overlapping admission times on the same ward.

Supplemental table

Table S1

Results of univariable and multivariable cox regression analysis of association between SARS-CoV-2 infection and determinants in the overall study population (A) and within Covid-19 patient care (B) after exclusion of ward 2

A: univariable and multivariable cox regression models				
		SARS-CoV-2 incidence N/total (% , 95% CI)	HR (95% CI)	Adjusted HR (95% CI)
HCW work environment	no patient care	7/198 (3.6, 0.9-6.1)	1	1
	non-COVID-19 patient care only	11/164 (6.7, 2.8-10.5)	1.8 (0.7-4.5)	1.5 (0.6-4.2)
	COVID-19 patient care	44/423 (11.0, 7.9-14.0)	3.3 (1.5-7.3)	2.4 (0.9-6.0)
COVID-19 coworker contact	no	28/452 (6.6, 4.2-8.9)	1	1
	yes	32/306 (11.3, 7.6-14.9)	1.8 (1.1-3.0)	1.6 (0.86-2.8)
COVID-19 community contact	no	44/680 (7.1, 5.0-9.0)	1	1
	yes	18/105 (18.7, 10.4-26.3)	2.8 (1.6-4.8)	2.4 (1.3-4.3)
days/week spent in hospital	-	-	1.1 (0.8-1.4)	1.6 (0.86-2.8)
age	-	-	0.98 (0.96-0.998)	0.99 (0.96-1.01)
B: univariable and multivariable cox regression models within COVID-19 patient care group				
		SARS-CoV-2 incidence N/total (% , 95% CI)	HR (95% CI)	Adjusted HR (95% CI)
hospital unit type	intensive care	13/186 (7.1, 3.3-10.7)	1	1
	COVID-19 unit	22/118 (19.7, 12.0-26.8)	2.8 (1.4-5.5)	2.8 (1.2-6.7)

	emergency room	7/102 (8.0, 2.5-13.1)	1.1 (0.5-2.7)	1.2 (0.4-3.4)
	combination of above	2/17 (11.8, 0.0-25.8)	2.0 (0.4-8.7)	1.3 (0.1-13.4)
position	specialist	4/84 (4.8, 0.1-9.3)	1	1
	resident	12/104 (12.8, 6.0-19.1)	2.9 (0.94-8.8)	1.8 (0.5-6.8)
	nurse	28/235 (12.4, 8.0-16.6)	2.6 (0.91-7.4)	1.5 (0.5-4.9)
self-reported COVID-19 exposure	low	11/86 (13.2, 5.6-20.2)	1	1
	medium	13/160 (9.2, 4.5-13.7)	0.7 (0.3-1.4)	0.5 (0.2-1.3)
	high	11/68 (16.4, 7.1-24.9)	1.2 (0.5-2.7)	1.2 (0.4-3.5)
	very high	9/109 (8.4, 3.0-13.5)	0.6 (0.2-1.4)	0.7 (0.2-2.2)
feasibility social distancing	easy	0/2 (0.0, 0.0-0.0)	NA	NA
	medium	5/25 (20.0, 2.7-34.2)	1	1
	difficult	13/101 (13.4, 6.3-19.9)	0.6 (0.2-1.7)	0.4 (0.1-1.5)
	virtually impossible	24/274 (9.3, 5.8-12.7)	0.4 (0.2-1.1)	0.4 (0.1-1.2)
PPE always correctly used	no	5/53 (9.5, 1.2-17.1)	1	1
	yes	39/368 (11.3, 7.9-14.6)	1.2 (0.5-2.9)	1.0 (0.3-3.0)
COVID-19 coworker contact	no	15/183 (8.3, 4.2-12.3)	1	1
	yes	27/219 (13.0, 8.4-17.4)	1.6 (0.84-2.9)	2.4 (1.0-5.4)

COVID-19 community contact	no	31/347 (9.6, 6.4-12.7)	1	1
	yes	13/76 (17.6, 8.4-25.8)	1.9 (1.016- 3.7)	1.5 (0.7-3.3)
days/week spent in hospital	-	-	0.7 (0.5- 1.0)	0.7 (0.5-1.0)
age, years	-	-	0.97 (0.94- 1.001)	0.99 (0.96- 1.03)

Caption: HR, hazard ratio; CI, confidence interval. Percentages with confidence intervals were calculated using the Kaplan Meier method. Adjusted HRs shown in A belong to a model containing all variables in A, likewise for B.

References

1. National Institute for Public Health and the Environment [Internet]. 2020 [cited 2020 Dec 18]. Available from: <https://lci.rivm.nl/ventilatie-en-covid-19>
2. Sealed Envelope Ltd. [Internet]. 2020. Available from: <https://www.sealedenvelope.com/> [Accessed 8 Nov 2020]
3. R Core Team (2013). R: A language and environment for statistical computing. R Foundation for Statistical Computing, Vienna, Austria;
4. Therneau T, Grambsch P. Survival: A Package for Survival Analysis in R. 2020.
5. Kassambara A, Kosinski M, Biecek P, Fabian S. Survminer. 2020.