

Acute Metabolic Emergencies in Diabetes and COVID-19: a systematic review and meta-analysis of case reports

Vasileios Papadopoulos^{1,2}, Marios-Vasileios Koutroulos², Dimitra-Georgia Zikoudi², Stefania-Aspasia Bakola², Peny Avramidou², Ntilara Touzlatzi², Dimitrios K. Filippou³

Affiliations:

1 ENARGEIA Medical Ltd, Department of Internal Medicine, Xanthi, Greece

2 Xanthi General Hospital, Xanthi, Greece

3 Medical School, National and Kapodistrian University of Athens

Corresponding author:

Vasileios Papadopoulos, MD, PhD, BSc in Molecular Biology and Genetics

6, Elpidos str, GR 67131, Xanthi, Greece

E-mail: vaspapmd@gmail.com

Web: www.enargeia.eu

Running title:

Acute Diabetes Emergencies in COVID-19

Abstract word count: 197

Manuscript word count: 4129

Conflict of interest:

None declared

Funding:

ENARGEIA Medical Ltd, Xanthi, Greece

NOTE: This preprint reports new research that has not been certified by peer review and should not be used to guide clinical practice.

Abstract

Introduction: COVID-19 is associated with DKA (Diabetic Ketoacidosis), HHS (Hyperglycaemic Hyperosmolar State) and EDKA (Euglycaemic DKA). High mortality has been observed in COVID-19-related diabetic ketoacidosis; however, evidence is scarce.

Patients and Methods: A systematic literature review was conducted using EMBASE, PubMed/Medline, and Google Scholar from January to December 2020 to identify all case reports describing DKA, HHS, and EDKA, in COVID-19 patients. The Joanna Briggs Institute critical appraisal checklist for case reports was used for quality assessment. Univariate and multivariate analysis assessed correlations of study origin, combined DKA/HHS, age, BMI, HbA1c, administered antidiabetics, comorbidities, symptoms onset, disease status, CRP, ferritin, d-dimers, glucose, osmolarity, pH, bicarbonates, ketones, lactates, β -hydroxybutyric acid, anion gap, and acute kidney injury (AKI) with outcome.

Results: From 312 identified publications, 41 including 71 cases analyzed qualitatively and quantitatively. Multivariate analysis demonstrated that COVID-19 disease status 4 ($P < 0.001$), AKI ($P < 0.001$), $\text{pH} \leq 7.12$ ($P = 0.032$), and osmolarity ≥ 324 ($P = 0.034$), are all independently correlated with death. COVID-19 Disease Status 4 ($P = 3 \times 10^{-8}$), combined DKA/HHS ($P = 0.021$), and AKI ($P = 0.037$) are independently correlated with death.

Conclusion: COVID-19 intertwines with acute metabolic emergencies in diabetes leading to increased mortality; key determinants are critical COVID-19 illness, co-presence of ketoacidosis and hyperosmosis and AKI.

Keywords

COVID-19, Diabetic Ketoacidosis, Hyperglycaemic Hyperosmolar State, Euglycaemic Diabetic Ketoacidosis

Introduction

Diabetes mellitus (DM), especially type 2 diabetes mellitus (T2D), has been identified as a risk factor for poor outcomes in patients with COVID-19 caused by severe acute respiratory syndrome coronavirus 2 (SARS-CoV-2) [1], emphasizing the key role of blood glucose management in the treatment of these patients [2]. COVID-19 might either induce new onset diabetes or unmask previously undiagnosed diabetes [3]. Diabetes patients have an increased risk of infection and acute respiratory distress syndrome compared with the general population and the risk is similar [4] or even greater in those with T1D than in T2D [5-8]; direct cytopathic effects of SARS-CoV-2 on pancreatic b-cell populations [9] as well as the over-activity of immune system might further explain COVID-19-related severe and resistant to conventional therapy DKA episodes [10]. However, Coate et al. report findings that reduce the likelihood that SARS-CoV-2 directly infects b cells in vivo through ACE2 and TMPRSS2 [11].

COVID-19 is associated with hyperglycaemic emergencies with overrepresentation of T2D in patients presenting with DKA and long-lasting ketosis [12,13]. Diabetic ketoacidosis was the most common reason for hospitalization of T1D patients with COVID-19 [6] [14]. Emergency admissions due to acute metabolic crisis in patients with diabetes remain some of the most common and challenging conditions; Diabetic Ketoacidosis (DKA), Hyperglycaemic Hyperosmolar State (HHS) and recently focused Euglycaemic Diabetic Ketoacidosis (EDKA) are life-threatening different entities. DKA and HHS have distinctly different pathophysiology but basic management protocols are the same. EDKA resembles DKA but without hyperglycaemia [15]. Ketoacidosis is the hallmark of DKA and is attributed to absolute insulin deficiency; therefore, it is found mostly in type 1 diabetes (T1D), an autoimmune disease characterized by progressive b-cell destruction. DKA is less commonly seen in T2D with triggers such as severe infection [16] and sodium-glucose co-transporter-2 (SGLT-2) inhibitor therapy [17]. On the other hand, HHS is developed under insulin sufficiency, at least enough to prevent ketosis [15]. As the age of onset of T2D continuously drops, while T1D tends to be intertwined with T2D over time in a substantial proportion of patients leading to double or hybrid diabetes [18], the old belief that DKA is specific to T1D, while HHS to T2D does not hold any more; in fact, the mixed entity (HHS/DKA) is not uncommon.

Predominant features of DKA and EDKA are ketonemia and high anion gap metabolic acidosis. In detail, both DKA and EDKA are defined as pH <7.3 and/or bicarbonate <15 mmol/L, and detection of ketones in blood (ketonemia >3.0 mmol/L) or urine (2+ in urine); however, blood glucose >11 mmol/L is indicative of DKA while <11 mmol/L of EDKA. On the contrary, HHS is characterized by very high glucose levels (>33.3 mmol/L) in combination with very high serum osmolality (> 320 mOsm/kg).

Several case reports concerning acute emergencies related to glucose metabolism in COVID-19 patients have been reported. Additionally, high mortality in COVID-19 and diabetic ketoacidosis has been reported in a

single letter [19]. A systematic review of the literature concluded that DKA in COVID-19 patients portends a poor prognosis with a mortality rate approaching 50% and insisted on the need to differentiate isolated DKA from combined DKA/HHS as the latter, which represents nearly one-fifth of the DKA cases, tends to have higher mortality than DKA alone [20]. Therefore, diabetic COVID-19 patients should be assessed for disease severity and presence of complications of diabetes, while undiagnosed diabetes should be kept in mind of the clinician, especially in patients feeling unwell [21].

The aim of the present systematic review and meta-analysis is to provide further evidence regarding the key features of COVID-19-related acute metabolic emergencies in diabetes (DKA, EDKA, HHS, and DKA/HHS) by identifying all relevant case reports that can provide detailed patient data and summarizing their results together.

Patients and Methods

Literature search

A systematic literature review was conducted using EMBASE and PubMed/Medline from January 2020 to December 2020 to identify all studies which reported case reports describing acute metabolic emergencies, namely DKA, EDKA, HHS, and DKA/HHS, in patients with confirmed COVID-19 infection through positive RT-PCR for the detection of SARS-CoV-2 RNA in nasopharyngeal swab or bronchoalveolar lavage, using the search strategy that included the terms (diabetes AND ketoacidosis AND covid) OR (diabetic AND ketoacidosis AND covid) OR (euglycemic AND diabetic AND ketoacidosis AND covid) OR (hyperglycaemic AND hyperosmolar AND state AND covid). Google Scholar database was used as an additional pool of published data; iterative search was performed until no additional publication could be traced. Personal communication was attempted where necessary. Lastly, we searched for unpublished dissertations and other unpublished work. No software was used for study retrieval. The review methods were established prior to the conduct of the review. No significant deviations from the protocol were allowed. The relevant protocol was submitted to PROSPERO database on January 5, 2021 and corrected on January 8, 2021 (ID: 229356).

Study selection

Six reviewers (V.P., M.-V.K., D.-G.Z., S.-A.B., P.A., and N.T.) screened the total number of initially identified studies, applied eligibility criteria and selected studies for inclusion in the systematic review working simultaneously as three independent couples of investigators (one for screening and the other for checking decisions). These three couples will be blinded to each other's decisions. D.F. was responsible to dissolve any disagreement. No specific software was used for recording decisions; all data were transformed to a suitable Word table. Sources of financial support were traced where possible. Eligible studies were all that (1) described one or more case reports containing requested data retrievable at individual level; (2) were written in English, (3) had a consistent outcome of interest and (4) were not duplicates of older versions. No restrictions will be considered regarding publication time as no outdated studies exist due to the novelty of the topic. Due to the inflated interest on publishing new works on the field, we proceeded to pre-run searches prior to the final analysis in order to include any further studies identified.

Outcome measures

The present study was conducted in accordance to the MOOSE reporting guidelines for observational studies [22]. Comparison between studies of USA and non-USA origin; between absence and presence of mixed ketotic and hyperosmotic state; within age, body mass index (BMI), and HbA1c (treated either as continuous

or binary variables); between absence or presence of prior administration of various antidiabetic agents including insulin, metformin, sulfonylureas, dipeptidyl peptidase-4 inhibitors (DPP-4i), glucagon-like peptide-1 receptor agonists (GLP-1 RAs), sodium-glucose cotransporter-2 inhibitors (SGLT-2i), and pioglitazone; between absence and presence of comorbidities including T1D/T2D, arterial hypertension (AH), hyperlipidemia, coronary artery disease (CAD), asthma; within number of comorbidities, days from onset of symptoms, disease severity expressed as disease status, C-reactive protein (CRP), ferritin, d-dimers, glucose, osmolality, arterial pH, bicarbonates, ketones, lactates, β -hydroxybutyric acid (β -HB), and anion gap (treated either as continuous or binary variables); and between absence or presence of acute kidney injury (AKI), and Outcome (survival/discharge vs. death) was performed. AMSTAR 2 checklist was used to assess the quality of the present study [23,24].

Disease status

The disease-status (DS) of COVID-19 patients was classified based on the adaptation of the Sixth Revised Trial Version of the Novel Coronavirus Pneumonia Diagnosis and Treatment Guidance, as described previously [25]. Mild cases (DS1) were defined as mild clinical symptoms (fever, myalgia, fatigue, diarrhea) and no sign of pneumonia on thoracic X-Ray or/and CT scan. Moderate cases (DS2) were defined as clinical symptoms associated with dyspnea and radiological findings of pneumonia on thoracic X-Ray or/and CT scan, and requiring a maximum of 3 L/min of oxygen. Severe cases (DS3) were defined as respiratory distress requiring more than 3 L/min of oxygen and no other organ failure. Critical cases (DS4) were defined as respiratory failure requiring mechanical ventilation, shock and/or other organ failure that require an intensive care unit (ICU).

Data extraction

A structured data collection form was used to extract the following data from each study: title of the study, name of the first author, country where the study was conducted, type of diabetes-related acute metabolic emergency, age, BMI, HbA1c, previously administered antidiabetic agents (including insulin, metformin, sulfonylureas, DPP-4i, GLP-1 RAs, SGLT-2i, and pioglitazone), comorbidities (including T1D/T2D, AH, hyperlipidemia, CAD, asthma), days from onset of symptoms, DS, CRP, ferritin, d-dimers, glucose, osmolality, arterial pH, bicarbonates, ketones, lactates, β -HB, anion gap, AKI, and outcome (survival/discharge or death). The data extraction process was carried out by six reviewers (V.P., M.-V.K., D.-G.Z., S.-A.B., P.A., and N.T.) who performed data extraction working simultaneously as three independent couples of investigators (consisting of one for extracting data and another for checking the extracted data); the process was performed manually and the three couples were blinded to each other's decisions. D.F. closely observed the process and was responsible for any discordance.

Quality assessment of the studies

The Joanna Briggs Institute (JBI) critical appraisal checklist for case reports, which includes 8 questions addressing the internal validity and risk of bias of case reports designs, particularly confounding and information bias, in addition to the importance of clear reporting, was used for quality assessment [26-29]. All studies that failed to fulfill requirements of first six questions were considered as of “suboptimal quality”; controversially, an “optimal quality” remark was given. The process was carried out by six reviewers (V.P., M.-V.K., D.-G.Z., S.-A.B., P.A., and N.T.) who performed quality assessment as three independent couples of investigators; in case of disagreement within a couple, D.F, who closely observed the process, was responsible to dissolve any discordance.

Data synthesis and statistical analysis

As variability values associated to each study were lacking, neither data synthesis nor classical meta-regression was applicable for case reports. Therefore, our option was to use classical regression without weighing each data point; this procedure still offered the advantage of a useful insight in cases that values were not too spread, despite that precise estimations could not be achieved. Thus, univariate analysis was performed to assess potent correlations of independent variables (study origin, presence of combined DKA/HHS, age, BMI, HbA1c, previously administered antidiabetics, comorbidities, days from onset of symptoms, DS, CRP, ferritin, d-dimers, glucose, osmolarity, arterial pH, bicarbonates, ketones, lactates, β -HB, anion gap, AKI) with outcome (survival/discharge or death), which was considered as dependent variable, with the aid of binary regression. At a next step, multivariate analysis was performed with binary logistic regression over discretized, imputed, and regularized data; outcome was considered as a dependent variable, while all variables that reached a level of statistical significance <0.10 in the univariate analysis were treated as potent independent ones (the probability for stepwise entry and removal were set to 0.05 and 0.10 accordingly, the classification cutoff was set to 0.5 and the maximum number of iterations was set to 20). During this process, ridge regression was used to avoid model overfitting, tolerate large variances and overcome collinearity obstacles, all at the least possible additive bias; all variables of interest, if not already binary, were transformed to binary ones through nominal optimal scaling along with discretization to two groups, imputing of missing data was added, and 10-fold cross-validation was selected through Optimal Scaling procedure (SPSS CATREG option). Models including parameters with tolerance <0.67 (variance inflation factor >1.5), as deduced from corresponding linear regression analysis assessing numerical values to outcome, were rejected to avoid collinearity. Imputed data tolerated missing values at a maximum of 25% for the entire model. Univariate comparisons were performed with the use of Pearson's χ^2 for discrete variables; Fisher's exact test was alternatively preferred in case that expected frequencies were <5 in more than one cell. Kappa statistics were used for the evaluation of inter-rater agreement between authors. The

level of statistical significance was set to $p=0.05$; values of $0.05 \leq p \leq 0.1$ were considered as needed further evaluation. Means are accompanied by their 95% confidence intervals (CI). All numerical values are given with at least two significant digits. Statistical analysis was performed with the use of IBM SPSS Statistics software, version 26.0.0.0, for Windows (IBM Corp ©) and MedCalc® Statistical Software version 19.6 (MedCalc Software Ltd, Ostend, Belgium; <https://www.medcalc.org>; 2020). The relevant odds ratios (OR) were used to construct a forest plot for visualization purposes using Revman 5.3 software from the Cochrane Collaboration [30].

Results

Study characteristics

During the final pre-run search prior to the final analysis carried out on January 7, 2021, 312 potentially relevant publications were identified through a thorough search of literature; 174 in EMBASE, 138 in PubMed/Medline, while two more publications of interest were identified through Google Scholar. No unpublished data of interest was detected. No personal contact with any author that considered necessary contributed any additional information.

After the exclusion of 141 duplicates, all the remaining 173 publications were initially reviewed based only on title and abstract; 110 excluded as being ineligible. Thus, 63 full-text publications were further assessed for eligibility; from these, 22 failed to fulfill the eligibility criteria due to various reasons; notably, three case reports did not refer to COVID-19 patients and are presented in Supplementary Table 1 for adherence to AMSTAR 2 checklist purposes. The remaining 41 publications included in qualitative synthesis and quantitative synthesis/statistical analysis [3, 31-70]. These publications included 71 separate case reports (Figure 1).

All characteristics regarding title of the study, name of the first author, country where the study was conducted, type of diabetes-related acute metabolic emergency, age, BMI, HbA1c, previously administered antidiabetic agents, comorbidities, days from onset of symptoms, DS, CRP, ferritin, d-dimers, glucose, osmolality, arterial pH, bicarbonates, ketones, lactates, β -HB, anion gap, acute kidney injury, and outcome are analytically presented in Table 1.

The quality of the present study was evaluated as “high” using the AMSTAR 2 checklist.

Quality assessment of the studies

Quality remarks are provided in Table 1; all details concerning quality assessment items are depicted analytically in Table 2. The inter-rater agreement between the two authors carried out the quality assessment process was high, as kappa was 0.87 (95% CI: 0.79-0.95). There was no difference between studies of “optimal” and “suboptimal” quality regarding outcome ($P=0.756$).

Primary outcome

Overall mortality was 32.4% (22/68 patients; 3 missing). The types of acute metabolic emergencies observed were DKA (45/71, 63.4%), EDKA (6/71, 8.5%), combined DKA/HHS (19/71, 26.8%), and HHS (1/71, 1.4%).

Detailed univariate analysis concerning characteristics of patients with outcome is analytically presented at Table 3. In detail, absence of combined DKA/HHS ($P=0.006$), and absence of AKI ($P=0.001$) are correlated with increased OR for survival. BMI ($P=0.071$), new onset of diabetes, either T1D or T2D ($P=0.071$), DS

($P=0.083$), osmolarity ($P=0.076$), pH value ($P=0.063$), and β -HB ($P=0.052$) were considered needing further evaluation and thus were included in multivariate regression analysis.

Regression analysis

The most parsimonious multivariate model is highly significant ($P=10^{-4}$), suggesting that COVID-19 Disease Severity 4 ($P=3 \times 10^{-8}$, tolerance: 0.838), simultaneous presence of DKA and HHS ($P=0.021$, tolerance: 0.803), and development of AKI ($P=0.037$, tolerance: 0.788) are all independently correlated with death. Ridge paths from optimal scaling process are graphically presented at Figure 3.

Discussion

We describe three major determinants of outcome during acute metabolic emergencies in diabetes in COVID-19 patients: i) COVID-19 critical illness necessitating mechanical ventilation or else COVID-19 disease status 4, ii) simultaneous presence of ketoacidosis and hyperosmosis in the form of combined DKA/HHS ($P=0.021$), and iii) acute kidney injury. To the best of our belief, this is the first time that COVID-19 is demonstrated to intertwine with acute metabolic emergencies in diabetes leading to increased mortality.

Our study revealed an overall mortality of 32.4% (22/68 patients; 3 missing) in COVID-19 patients who had developed DKA, DKA/HHS, and HHS. Interestingly, two recently published case series, whose data are not included in the present study as they are not presented analytically, report mortality rates that range from as low as 7.7% (2/26 patients) [12] and 1/7 patients (12.9%) [71], to 50% (25/50 patients) [19]; however, these case series derive from a single centers and thus might not be representative.

Our findings regarding the independent correlation of critical illness and mortality during COVID-19-related acute metabolic emergencies in diabetes are in keeping with what is already reported [19]. In detail, Chamorro-Pareja et al. reported survivors to have lower CRP levels (355 mg/L, 95% CI: 312-398) when compared with non-survivors (167 mg/L, 95% CI: 120-214); $P<0.0001$. Despite that both survivors and non-survivors demonstrated similar intensive care unit (ICU) admission rates ($P=0.258$), the former required intubation and mechanical ventilation more frequently ($P<0.001$).

Moreover, we exhibited an independent correlation of acute kidney injury with mortality during COVID-19-related DKA, DKA/HHS, and HHS. AKI is quite common among patients without critical illness and usually has a mixed etiology intertwining sepsis, ischemia and nephrotoxicity and perplexing recognition and treatment [72]. Chamorro et al. report that AKI was observed in 92% (23/25) and 60% (15/25) of COVID-19-related DKA non-survivors and survivors, respectively; these data indicate that AKI is significantly correlated with death in patients with COVID-19-related DKA ($P=0.008$). Similarly, renal replacement therapy was required in 40% (10/25) and 4% (1/25) COVID-19-related DKA non-survivors and survivors, respectively, implying that renal replacement therapy is significantly correlated with death in these patients ($P=0.002$) [19].

Additionally, we demonstrated an independent correlation of mixed DKA/HHS related to COVID-19 infection with non-surviving. Our results are in keeping with the ones reported in the systematic review of Pal et al., who describe a statistically significant difference in arterial blood pH between COVID-19-related DKA survivors (7.23, 95% CI: 7.09-7.26) when compared with non-survivors (7.00, 95% CI: 6.91-7.11); $P=0.017$ [20]. Despite that data linking increased osmolarity with increased fatality rate in COVID-19 patients are lacking, it is well known that death occurs in 5–16% of patients with HHS in general, a rate that is about 10-fold higher than that reported for DKA [73-75]. Moreover, a hypertonic environment, as it prevails in hyperosmolar states such as hyperglycemia of diabetes mellitus, has been shown to impair the immune

response, thus facilitating the development of infection. In detail, osmotic cell shrinkage blunts the stimulatory action of antigen exposure on IFN-gamma production, an effect explained at least partially by suppression of transcription factor activation [76].

We have noticed that all patients but one (a patient with gestational diabetes) who had developed EDKA received SGLT-2i treatment (Fisher's exact $P=0.004$). Treatment with SGLT-2i has been reported to trigger EDKA in T2D patients with [39] or without COVID-19 infection, usually during other infections, sepsis or surgery [77-79]. These regimens might be prescribed even for T1D, even without reimbursement; interestingly, a single case report of a patient with T1D who received empagliflozin 25mg q24h and developed EDKA during COVID-19 pneumonia has been recently published [40]. Glycaemic stability can mislead the clinician, since hyperglycosuria induced by SGLT-2i may blunt hyperglycaemia during infection and contribute to a lack of insulin, finally promoting ketogenesis [77]. Therefore, it is strongly advised that the use of SGLT-2i should be discontinued at once in both T2D and T1D patients as soon as COVID-19 is diagnosed; in these cases, exclusive administration of insulin is considered to be the safest choice [79-81].

As far as antidiabetic regimens other than SGLT-2i are concerned, we have not detected any correlation of any antidiabetic drug category with any special type of metabolic emergency or outcome; this observation conveys the limitations of the small sample size of the present study. It has been reported that liraglutide counteracts the downregulating effect of diabetes on the pulmonary expression of ACE2 in rats without influencing glucose and insulin levels. GLP-1 RAs were also shown to have anti-inflammatory effects and to reduce lung inflammation in murine models of experimental lung injury. In humans, GLP-1 RAs reduce circulating inflammatory biomarkers in diabetic and/or obese patients while insulin reduces these biomarkers in critically ill patients. Pioglitazone was also shown to upregulate ACE2 in hepatocytes of rats fed with a high fat diet. Finally, the DPP-4 is the entry receptor of MERSCoV, raising concerns about the impact of DPP-4i during the course of coronavirus infection [82].

Another interesting point that was addressed in the present study was the fact that patients who were treated with insulin presented an increased OR to succumb in contrast with those treated with metformin. Interestingly, insulin usage was associated with poor prognosis (OR 3.58, 95% CI: 1.37, 9.35, $P=0.009$) [83]. However, insulin administration has been shown to restore ACE and ACE2 levels in the serum, which may indicate a protective effect at least in patients that are non-insulin-depleted [84]. Therefore, this finding could reflect a confounder effect due to either the type of diabetes, or increased age. T1D patients, who are by definition insulin-dependent, when compared with T2D patients, are more prone to adverse outcome during COVID-19 infection (OR 2.40, 95% CI: 1.82-3.16; $P<0.0001$ and 1.37, 95% CI: 1.28-1.47; $P<0.0001$, respectively) [5]. Moreover, unfavorable outcome was observed more often in older patients presenting COVID-19-related DKA ($p<0.001$) [19].

There are several explanations for the intertwining of COVID-19, and especially its severe form, with DKA. COVID-19 might either induce new onset diabetes or unmask previously undiagnosed diabetes (type 1 or type 2). This is reflected at HbA1c values at the time of admission; normal and elevated HbA1c values at the time of admission suggest new onset and previously undiagnosed diabetes, respectively [3]. SARS-CoV-2 can trigger severe diabetic ketoacidosis at presentation in individuals with new-onset diabetes; however, there is no hard evidence that SARS-CoV-2 is etiologically linked with T1DM for the time being [85]. As DKA occurs as a result of insulin deficiency and increased counterregulatory responses, which favor the production of ketones, the unique interactions between SARS-CoV-2 and the RAAS might provide yet another mechanism in the pathophysiology of DKA firstly by direct entry of SARSCoV-2 into pancreatic islet cells that might worsen b-cell injury and secondly by downregulation of ACE2 after viral entry that can lead to unopposed angiotensin II and subsequent insulin secretion impedance [86]. Lastly, little is known on the potent etiological role of dexamethasone, which is administered in COVID-19, and its potent effect on DKA evolution; in fact, an anecdotal case of corticosteroids-stimulated DKA in a non-diabetic COVID-19 patient with ARDS has been observed after the fifth day of dexamethasone administration [Skendros, personal communication]. Nevertheless, rigorous and proper restoration of volume and insulin adequacy, along with potassium preservation should be commenced immediately in any case of COVID-19-related DKA. As the relationship between SARS-CoV-2 and the RAAS can complicate DKA management due to increased pulmonary vascular permeability and worsened damage to lung parenchyma, fluid replacement needs to be administered judiciously to avoid aggravating pulmonary injury. This also raises the importance of careful assessment of fluid status through objective hemodynamic parameters to determine the amount of fluid replacement. Another important aspect in DKA management is that of monitoring and correcting electrolyte abnormalities. As angiotensin II stimulates aldosterone secretion and increases renal potassium loss, this can potentiate the risk of hypokalemia, which might necessitate additional potassium supplementation in order to continue intravenous insulin to suppress ketogenesis [86-89].

It has been proposed that direct cytopathic effects of SARS-CoV-2 on pancreatic b-cell populations may contribute to this high prevalence of severe COVID-19-associated DKA in T2DM; ACE2 expression at both the mRNA and protein is increased substantially in human beta cells in response to inflammatory cytokines, presumably rendering these cells more susceptible to infection [90]. Both SARS and COVID-19 have been reported to trigger transient insulin resistance and hyperglycaemia. SARS results in elevated glucose during admission however glucose intolerance is resolved at hospital discharge. This COVID-19 induced insulin resistance may explain in part poor responses to standard DKA management [39]. Indeed, emerging data indicate a bidirectional relationship between T2D and Covid-19 [91]. Firstly, preexisting diabetes is a risk factor for poor outcomes and death after Covid-19. Impairment of the innate and adaptive immune response tames the ability to fight infection in patients with diabetes and particularly in those who are

obese. Furthermore, severe Covid-19 infection significantly reduces the numbers of natural killer cells, notably CD4+ and CD8+ cells, as well as CD4+ as CD8+ lymphocytes yet in an unclear mechanism. The association between Covid-19 and hyperglycemia in elderly patients with T2D might reflect metabolic inflammation and exaggerated cytokine release. SARS-CoV2 infection can deteriorate glycemic control, involving both profound insulin resistance and impaired insulin secretion, together leading to DKA and increasing hospital admissions and mortality [10,92].

A major limitation of the present study is that it relies only in case reports, which lack the ability to generalize or to establish cause-effect relationship, while conveying all danger of over-interpretation, publication bias, retrospective design, and distraction of reader when focusing on the unusual. However, the major merits of case reporting focus, among other, on detecting novelties, and generating hypotheses, which are considered absolutely necessary during the course of the COVID-19 pandemic [93].

As a conclusion, COVID-19 intertwines with acute metabolic emergencies in diabetes leading to increased mortality; key determinants are critical COVID-19 illness, co-presence of ketoacidosis and hyperosmosis and AKI. Further studies are needed to consolidate knowledge on the underlying pathophysiological mechanisms and awareness should be advised to clinicians for early detection of DKA, EDKA, and HHS in COVID-19 patients.

Compliance with Ethical Standards

Disclosure of potential conflicts of interest:

None declared

Research involving Human Participants and/or Animals:

All procedures performed in studies involving human participants were in accordance with the ethical standards of the institutional and/or national research committee and with the 1964 Helsinki declaration and its later amendments or comparable ethical standards.

This article does not contain any studies with animals performed by any of the authors.

Informed consent:

Informed consent was obtained from all individual participants included in the study.

Table 1. Studies included in the present meta-analysis along with analytical description of patients characteristics.

Study	Origin	EP	Sex	Age	BMI	HbA _{1c}	DM rec	DM medication	Comorb dities	Day	DS	CRP	Ferr	DD	Glu	Os m	pH	Bic	Ket	Lac	β- HB	AG	AKI	Outco me	QA	
Palermo [31]	USA	EDKA	F	53	33	7.5	Yes	MET/2000, GLI/4, EMP/10, EXE/2w, INS/GLA/22	AH, DYS, T2D, obesity	>12	4	95.4	440	?	192	?	7.24	15	?	1.3	6.1	?	No	?	S	
Palermo [31]	USA	DKA	M	45	28	12.6	No	(-)	(-)	12	3	?	?	?	599	305	7.18	15.0	?	2.4	>9	?	Yes	?	S	
Reddy [32]	India	DKA	M	30	29	9.6	No	(-)	(-)	6	2	157	817	1.9	555	298	7.07	6.1	?	1.2	?	12	No	Dis	O	
Reddy [32]	India	DKA	M	60	26	12.6	No	(-)	AH	?	1	14	135	0.9	582	305	7.30	13.0	?	1.1	?	16	No	Dis	O	
Chae [33]	Sing	DKA	M	37	23	14.2	No	(-)	(-)	?	1	?	?	?	715	301	7.28	12.0	6.4	?	?	30	No	Dis	O	
Li [34]	China	DKA	M	26	?	?	?	?	?	?	?	?	?	?	407	?	6.86	?	?	1.7	?	?	?	33.3 % mortality	S	
Li [34]	China	DKA	F	54	?	?	?	?	?	?	?	?	?	?	382	?	7.22	?	?	1.7	?	?	?	S		
Li [34]	China	DKA	F	44	?	?	?	?	?	?	?	?	?	?	298	?	7.32	?	?	0.7	?	?	?	S		
Fang [35]	USA	EDKA	M	52		8.5	Yes	MET/7, EMP/10	AH, DYS, T2D	?	4	?	?	?	113	?	7.30	?	?	?	5.0	18	No	Dis	O	
Daniel [36]	India	DKA	F	15	19	13.5	No	(-)	(-)	?	2	?	?	?	414	?	6.90	?	?	2.0	?	?	Yes	Dis	O	
Tollard [37]	Franc e	DKA-HHS	F	32	40	13.1	No	(-)	Obesity	?	4	?	?	?	1.8	859	331	7.01	3.2	4.2	?	?	?	No	Died	O
Chan [38]	USA	DKA-HHS	M	48	25	13.6	Yes	?	T2D	?	1	83	909	4.1	1130	365	7.20	9.1	?	?	>4.5	33	No	Dis	O	
Chan [38]	USA	DKA	M	52	24	12.1	Yes	?	T2D, AH, CAD	2	2	112	1650	1.2	683	318	7.24	11.0	?	?	>4.5	21	No	Dis	O	
Chan [38]	USA	DKA	M	19	59	10.9	No	(-)	Obesity	?	4	81	1628	1.2	1112	307	7.10	8.0	?	?	>4.5	32	Yes	Died	O	
Chan [38]	USA	DKA-HHS	M	38	24	?	Yes	?	T2D	?	4	26	807	0.8	1070	347	6.77	<5	?	?	>4.5	>29	Yes	Died	O	
Chan [38]	USA	DKA-HHS	M	62	24	13.3	Yes	?	T2D	?	4	132	6671	1.1	604	323	7.00	6.0	?	?	?	29	No	Died	O	
Chan [38]	USA	DKA-HHS	M	62	31	?	Yes	?	T2D, AH, CAD, HF, obesity	?	4	?	3400	?	959	358	6.86	6.6	?	?	>4.5	>29	Yes	Died	O	
Goldman [39]	UK	DKA	?	40	?	12.8	No	(-)	(-)	?	?	?	?	?	342	?	7.12	8.0	4.2	?	?	?	?	50% mortality	S	
Goldman [39]	UK	DKA	?	42	?	10.8	Yes	1 EMP/7, 1 DPP-4i, 1?	T2D	?	?	?	?	?	360	?	7.10	7.4	6.2	?	?	?	?	S		
Goldman [39]	UK	DKA	?	59	?	9.5	Yes		T2D	?	?	?	?	?	468	?	7.23	12.0	4.4	?	?	?	?	S		
Goldman [39]	UK	DKA	?	82	?	?	Yes		T2D	?	?	?	?	?	396	?	7.27	15.7	5.3	?	?	?	?	S		
Onot [40]	Belgi um	EDKA	M	52	29	7.4	Yes	INS/GLA/45, INS/GLU/8-6, EMP/25	T1D, DYS, OSA, Hashimoto	4	4	253	?	?	232	?	7.25	21.6	?	1.4	3.1	17	No	Dis	O	
Meza [41]	USA	DKA-HHS	F	87	?	12.4	Yes	?	T2D	4	4	?	462	6.7	752	336	7.04	5.3	?	?	?	?	Yes	Died	O	
Meza [41]	USA	DKA	M	24	?	18.0	No	(-)	(-)	13	4	?	1650	1.6	549	314	7.11	3.2	?	?	?	40	Yes	Dis	O	
Meza [41]	USA	DKA-HHS	M	66	?	14.0	Yes	?	T2D, AH	4	4	?	1234	3.0	933	322	7.03	2.4	?	?	?	44	Yes	Died	O	
Meza [41]	USA	DKA	M	68	?	?	Yes	?	T2D	1	4	?	1291	0.5	727	316	7.01	9.0	?	?	?	31	Yes	Died	O	
Belista [42]	Brazil	EDKA	M	56	26	7.2	Yes	MET/1700, EMP/10, LINS	T2D, AH	5	3	202	?	?	118	276	7.28	8.9	?	?	?	?	No	Dis	O	
Rafique [43]	UK	DKA-HHS	F	79	?	6.9	Yes	MET/1000	T2D, Alzheimer	?	4	45	1044	1.4	749	357	7.19	9.8	5.1	?	?	?	Yes	Died	O	
Hearney [44]	USA	DKA	M	54	43	?	No	(-)	Obesity	21	1	36	1763	0.4	463	283	7.19	9.9	?	3.8	?	?	No	Dis	O	
Kuchay [3]	India	DKA	M	34	27	12.0	No	(-)	(-)	?	1	27	619	0.4	940	?	7.21	14.0	?	0.8	?	17	?	Dis	O	
Singh [45]	USA	DKA	M	24	?	15.8	Yes	INS	T1D, DYS, obesity	?	4	?	?	?	507	311	7.16	2.0	?	?	?	31	Yes	Died	O	
Rabizadeh [46]	Iran	DKA-HHS	M	16	18	12.9	No	(-)	(-)	14	1	44	?	?	512	337	6.95	8.0	?	?	?	?	Yes	Dis	O	
Emara [47]	Egypt	DKA	M	42	27	8.1	Yes	?	T2D, AH, DYS	?	2	?	?	?	491	?	?	?	?	?	?	?	?	Dis	S	
Emara [47]	Egypt	DKA	M	51	21	7.8	Yes	?	T2D, AH, DYS	?	2	?	?	?	592	?	7.00	?	?	?	?	?	?	Dis	S	
Emara [47]	Egypt	DKA	M	62	20	8.5	Yes	?	T2D, AH, DYS	?	4	?	?	?	587	?	?	?	?	?	?	?	?	Died	S	
Kim [48]	Korea	DKA-HHS	M	59	?	11.4	Yes	Discontinued	T2D, AH	4	4	?	?	?	655	346	?	?	4.9	?	?	?	Yes	Died	O	
Kim [48]	Korea	HHS	F	72	?	12.6	Yes	?	T2D, AH, DYS	3	4	?	?	?	690	324	7.38	18.1	?	?	?	?	Yes	Dis	O	
Croft [49]	USA	DKA-HHS	M	55	31	9.5	No	GLI	T2D, obesity	?	4	>190	1214	0.5	948	338	7.13	?	?	?	0.8	21	?	?	O	
Croft [49]	USA	DKA	F	57	20	11.3	Yes	MET, GLI	T2D	3	2	182	337	1.1	227	298	7.11	?	?	?	9.4	24	?	Dis	O	
Croft [49]	USA	DKA	M	38	29	11.9	Yes	INS(DEL), INS(ASP)	T2D	1	2	(-)	(-)	(-)	399	307	7.02	?	?	?	?	22	?	Dis	O	
Croft [49]	USA	DKA	F	45	21	15.0	No	Discontinued	T2D	?	2	(-)	(-)	(-)	342	304	6.99	?	?	?	7.8	18	?	Dis	O	
Croft [49]	USA	DKA	F	63	36	9.8	No	INS	T2D, CAD, AH, obesity, asthma	?	4	>190	>16500	>3.5	749	327	7.21	?	?	?	?	18	?	Died	O	
Haider [50]	USA	DKA	F	46	?	?	Yes	?	T2D, AH, asthma	?	4	392	?	3.7	590	313	?	?	?	1.1	?	18	No	Dis	O	
Alasadhan [51]	Saudi Arabi a	DKA	F	44	32	11.0	Yes	MET, GLC	T2D, AH, RA, SLE, obesity	6	4	?	?	?	828	297	?	?	?	?	?	19	No	Dis	O	
Alasadhan [51]	Saudi Arabi a	DKA-HHS	F	55	?	14.6	No	(-)	(-)	4	4	?	?	?	491	343	6.93	7.7	?	?	?	27	No	Dis	O	
Alasadhan [51]	Saudi Arabi a	DKA	M	47	27	15.1	No	(-)	(-)	4	3	?	?	?	432	297	7.10	11.0	?	?	?	25	No	Dis	O	
Alasadhan [51]	Saudi Arabi a	DKA	M	40	?	11.3	Yes	INS(GLA), INS(HUM)	T1D	2	3	?	?	?	288	302	7.30	14.1	?	?	?	25	No	Dis	O	
Alasadhan [51]	Saudi Arabi a	DKA	M	70	?	9.9	Yes	INS	T2D, CAD, AH, DYS, obesity	1	4	?	?	?	500	?	7.18	14.0	?	?	?	20	Yes	Died	O	
Cavalcant [52]	USA	DKA-HHS	M	23	?	?	No	(-)	(-)	?	4	?	18431	>11	1384	363	7.00	?	?	?	?	?	?	Died	O	
Kaur [53]	USA	DKA-HHS	M	43	?	?	Yes	?	T2D, AH	?	4	290	1739	>20	948	365	6.96	?	?	8.7	?	27	Yes	Died	O	
Hofstein [54]	Germ any	DKA	M	19	?	16.8	No	(-)	(-)	35	0	?	?	?	552	?	7.10	?	?	?	?	?	No	Dis	O	
Winn [55]	USA	DKA	M	52	26	7.2	Yes	MET, GLP, LIR	T2D, AH, DYS	3	3	141	1434	4.0	415	?	7.31	13.9	5.8	?	?	29	No	Dis	O	
Winn [55]	USA	DKA	M	51	?	?	Yes	MET, GLP (Discontinued)	T2D	15	2	?	?	?	3.7	437	?	7.30	15.0	4.8	?	?	16	No	Dis	O
Siddiqui [56]	USA	DKA	M	38	30	10.8	No	(-)	(-)	?	3	?	?	?	532	283	7.27	14.0	3.1	?	?	24	No	Dis	O	
Besupre [57]	USA	DKA	F	42	?	?	Yes	?	T2D, AH, asthma	4	2	?	?	?	551	?	7.22	7.0	2.4	?	?	25	No	Dis	O	
Giamios [58]	USA	DKA	M	52	?	?	No	(-)	(-)	5	2	76	1028	0.4	360	?	?	?	2.7	?	?	?	20	No	Dis	O

EP: endpoint; BMI: body mass index; DS: disease severity; CRP: C-reactive protein; DD: d-dimers; Osm: serum osmolality; Bic: arterial blood bicarbonate; Ket: arterial blood ketones; β -HB: beta-hydroxybutyrate; AG: anion gap; AKI: acute kidney injury; QA: quality assessment (O: optimal, S: suboptimal), EDKA: euglycemic diabetic ketoacidosis; MET: metformin; GLI: glimepiride; EMP: empagliflozin; EXE: exenatide; INS(LG): insulin larginine, AH: arterial hypertension; DYS: dyslipidemia/hyperlipidemia; DKA: euglycemic diabetic ketoacidosis; Dis: discharged; HHS: Hyperosmotic hyperglycemic state; DPP-4: Dipeptidyl-peptidase-4; INS(GLU): insulin glulisine; OAS: obstructive sleep apnea; Lin: linsaglin; INS(DET): insulin detemir; INS(ASP): insulin aspart; CAR: coronary artery disease; CLC: glazide; RA: rheumatoid arthritis; SLE: systemic lupus erythematosus; INS(HUM): human insulin; GLP: glipizide; UR: liraglutide; GD: gestational diabetes; NA: not applicable; INS(LIS): insulin lispro; DUL: dulaglutide; INS(LEV): insulin levemir; CAN: canagliflozin.

Table 2. Quality assessment items of JBI critical appraisal list for case reports concerning included studies.

Study	Were patient's demographic characteristics clearly described?	Was the patient's history clearly described and presented as a timeline?	Was the current clinical condition of the patient on presentation clearly described?	Were diagnostic tests or assessment methods and the results clearly described?	Was the intervention(s) or treatment procedure(s) clearly described?	Was the post-intervention clinical condition clearly described?	Were adverse events (harm) or unanticipated events identified and described?	Does the case report provide takeaway lessons?	Optimal quality
Palermo	Yes	U	Yes	Yes	U	No	U	Yes	No
Reddy	Yes	Yes	Yes	Yes	Yes	Yes	No	Yes	Yes
Chee	Yes	Yes	Yes	Yes	Yes	U	No	Yes	Yes
Li	Yes	Yes	Yes	Yes	No	No	No	Yes	No
Fang	Yes	Yes	Yes	Yes	Yes	Yes	Yes	Yes	Yes
Daniel	Yes	U	Yes	Yes	Yes	Yes	No	Yes	Yes
Tollard	Yes	Yes	Yes	Yes	Yes	Yes	No	Yes	Yes
Chan	Yes	Yes	Yes	Yes	Yes	Yes	No	Yes	Yes
Goldman	No	Yes	Yes	Yes	U	No	No	Yes	No
Oriot	Yes	Yes	Yes	Yes	Yes	Yes	U	Yes	Yes
Meza	Yes	Yes	Yes	Yes	Yes	Yes	No	Yes	Yes
Batista	Yes	Yes	Yes	Yes	Yes	Yes	U	Yes	Yes
Rafique	Yes	Yes	Yes	Yes	Yes	Yes	No	Yes	Yes
Heaney	Yes	Yes	Yes	Yes	Yes	Yes	No	Yes	Yes
Kuchay	Yes	Yes	Yes	Yes	Yes	Yes	No	Yes	Yes
Singh	Yes	Yes	Yes	Yes	Yes	Yes	U	Yes	Yes
Rabizadeh	Yes	Yes	Yes	Yes	Yes	Yes	No	Yes	Yes
Emara	Yes	Yes	Yes	Yes	No	Yes	No	Yes	No
Kim	Yes	Yes	Yes	Yes	Yes	Yes	No	Yes	Yes
Croft	Yes	Yes	Yes	Yes	U	U	No	Yes	Yes
Haider	Yes	Yes	Yes	Yes	Yes	Yes	No	Yes	Yes
Alsadhan	Yes	Yes	Yes	Yes	Yes	Yes	No	Yes	Yes
Cavalcanti	Yes	Yes	Yes	Yes	U	Yes	No	Yes	Yes
Kaur	Yes	Yes	Yes	Yes	Yes	Yes	No	Yes	Yes
Hollstein	Yes	Yes	Yes	Yes	Yes	Yes	No	Yes	Yes
Winn	Yes	Yes	Yes	Yes	Yes	Yes	No	Yes	Yes
Siddiqui	Yes	Yes	Yes	Yes	Yes	Yes	No	Yes	Yes
Beaupre	Yes	Yes	Yes	Yes	Yes	Yes	No	Yes	Yes
Gianniosis	Yes	Yes	Yes	Yes	Yes	Yes	No	Yes	Yes
Richard	Yes	Yes	Yes	Yes	Yes	Yes	No	Yes	Yes
Soliman	Yes	Yes	Yes	Yes	Yes	Yes	No	Yes	Yes
Kabashneh	Yes	Yes	Yes	Yes	Yes	Yes	No	Yes	Yes
Kulick-Soper	Yes	Yes	Yes	Yes	U	No	No	Yes	No
Dass	Yes	Yes	Yes	Yes	Yes	Yes	Yes	Yes	Yes
Smati	Yes	Yes	Yes	Yes	Yes	Yes	No	Yes	Yes
Zavaleta	Yes	Yes	Yes	Yes	Yes	U	No	Yes	Yes
Cline	Yes	Yes	Yes	Yes	Yes	Yes	No	Yes	Yes
Raghunandan	Yes	Yes	Yes	Yes	Yes	Yes	Yes	Yes	Yes
Panjawatanan	Yes	Yes	Yes	Yes	Yes	Yes	No	Yes	Yes
Xu	Yes	Yes	Yes	Yes	Yes	Yes	No	Yes	Yes
Kayina	Yes	Yes	Yes	Yes	Yes	Yes	No	Yes	Yes

Y: Yes; N: No; U: Unclear

Table 3. Characteristics of COVID-19 patients in relation with outcome.

Parameters	N	Mean (±95%CI)†, n‡	Univariate analysis OR [95%CI] for death	Univariate analysis P (P after 1000 x bootstrapping)
Survivors				
Yes		46		
No	68	22	NA	NA
Type of acute metabolic emergency				
DKA		45		
EDKA		6		
DKA/HHS	71	19	NA	NA
HHS		1		
USA Origin				
USA		36		
Other countries (except USA)	71	35	1.71 [0.56-5.21]	0.342 (0.335)
Combined DKA/HHS				
Yes		19		
No	71	52	4.72 [1.44-15.44]	0.004 (0.006)
Male sex				
Yes		45		
No	67	22	0.97 [0.30-3.33]	0.961 (0.955)
Age				
Mean (±95 CI)	67	47.8 [43.8-51.8]	1.39 [0.97-2.00] per 10 increment	0.073 (0.120)
BMI				
Mean (±95 CI)	32	28.6 [25.8-31.4]	1.65 [0.92-2.97] per 5 increment	0.096 (0.071)
HbA1c				
Mean (±95 CI)	50	11.7 [10.9-12.5]	1.02 [0.82-1.26]	0.891 (0.868)
New onset T1D/T2D				
Yes		25		
No	68	43	0.36 [0.10-1.25]	0.108 (0.071)
Previous insulin treatment				
Yes		9		
No	17	8	5.99 [0.48-76.9]*	0.165 (0.071)
Previous metformin treatment				
Yes		10		
No	18	8	0.14 [0.01-2.52]**	0.184 (0.036)
Comorbidity number				
Mean (±95 CI)	55	1.8 [1.5-2.2]	1.34 [0.86-2.09] per unit	0.203 (0.171)
Day from onset of symptoms				
Mean (±95 CI)	64	6.6 [4.5-8.7]	1.22 [0.83-1.80] per unit	0.302 (0.203)
Disease status				
Mean (±95 CI)	64	3.0 [2.7-3.3]	1.20 [0.90-1.60] per unit	0.207 (0.083)
CRP				
Mean (±95 CI)	26	123 [76-150]	1.60 [0.51-3.11] per 100 increment	0.626 (0.653)
Ferritin				
Mean (±95 CI)	27	2075 [735-3410]	1.54 [0.80-2.94] per 1000 increment	0.179 (0.123)
D-dimers				
Mean (±95 CI)	29	3.9 [2.2-5.7]	1.05 [0.89-1.23] per unit	0.581 (0.595)
Glucose				
Mean (±95 CI)	71	626 [547-705]	1.14 [0.97-1.33] per 100 increment	0.115 (0.134)
Osmolarity				
Mean (±95 CI)	44	323 [315-331]	1.25 [0.98-1.60] per 10 increment	0.078 (0.076)
pH				
Mean (±95 CI)	63	7.13 [7.09-7.16]	0.68 [0.44-1.04] per tenth increment	0.074 (0.063)
Bicarbonates				
Mean (±95 CI)	47	9.7 [8.2-11.2]	0.92 [0.80-1.05] per unit	0.232 (0.301)
Ketones				
Mean (±95 CI)	15	5.4 [3.9-7.0]	1.15 [0.67-1.97] per unit	0.614 (0.325)
Lactates				
Mean (±95 CI)	22	4.1 [2.1-6.2]	1.04 [0.85-1.27] per unit	0.705 (0.602)
β-HB				
Mean (±95 CI)	16	5.9 [4.7-7.1]	1.54 [0.60-3.94] per unit	0.369 (0.052)
Anion Gap				
Mean (±95 CI)	40	26.2 [23.5-28.9]	1.05 [0.97-1.14] per unit	0.249 (0.259)
Acute Kidney Injury				
Yes		23		
No	53	30	7.52 (1.95-28.9)	0.003 (0.001)

† Continuous variables

‡ Discrete variables

* referring to patients with either T1D or T2D record

** referring to patients with T2D record

NA: not applicable

Figure 1. Study flow diagram

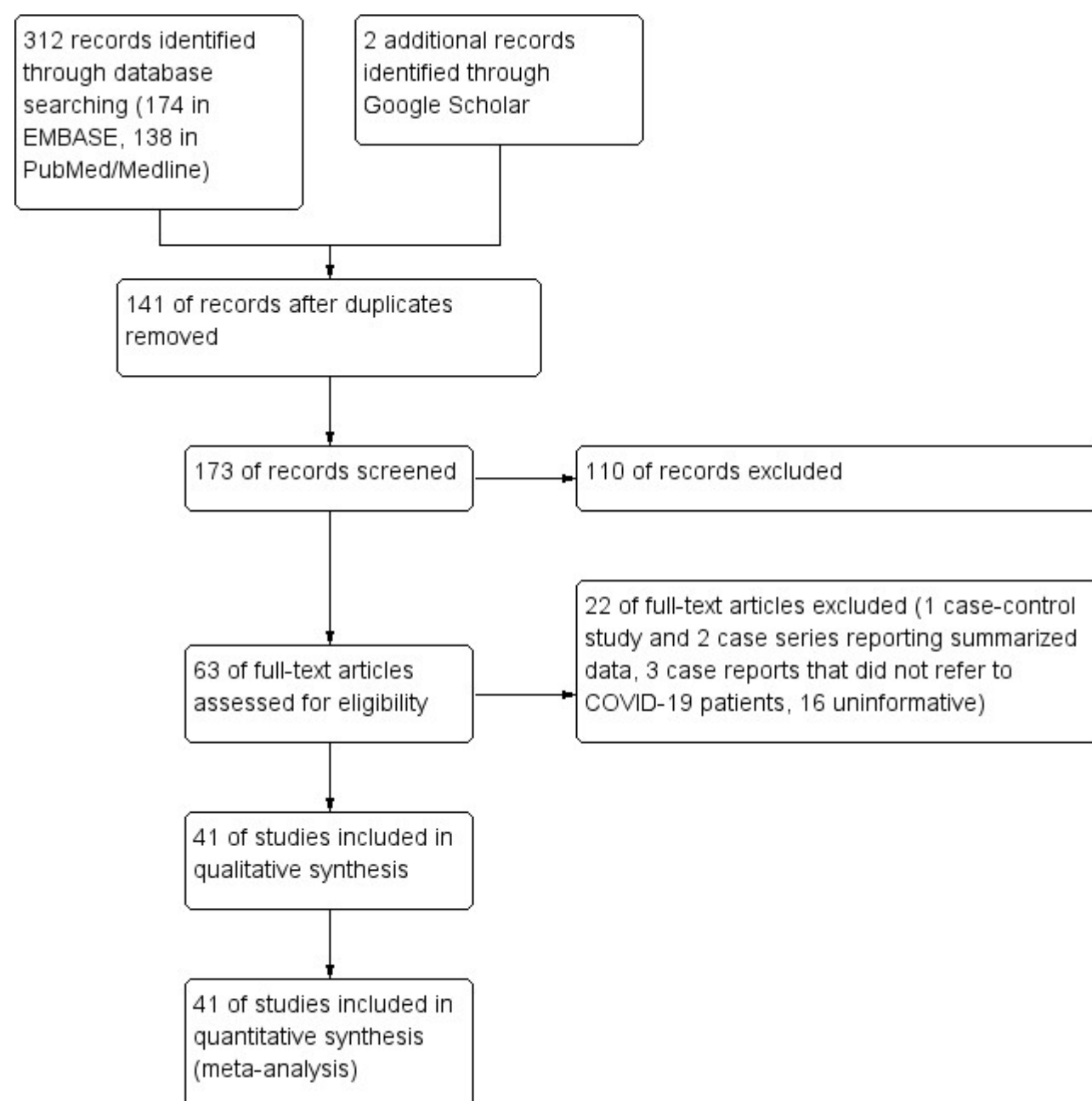


Figure 2. Forest plot depicting various patients' characteristics odds ratios OR for death.

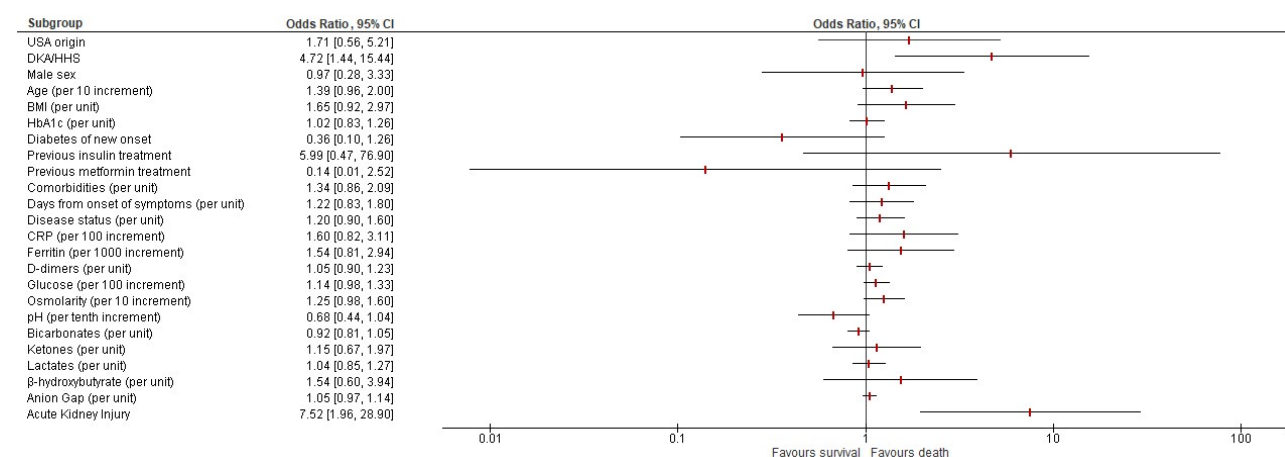
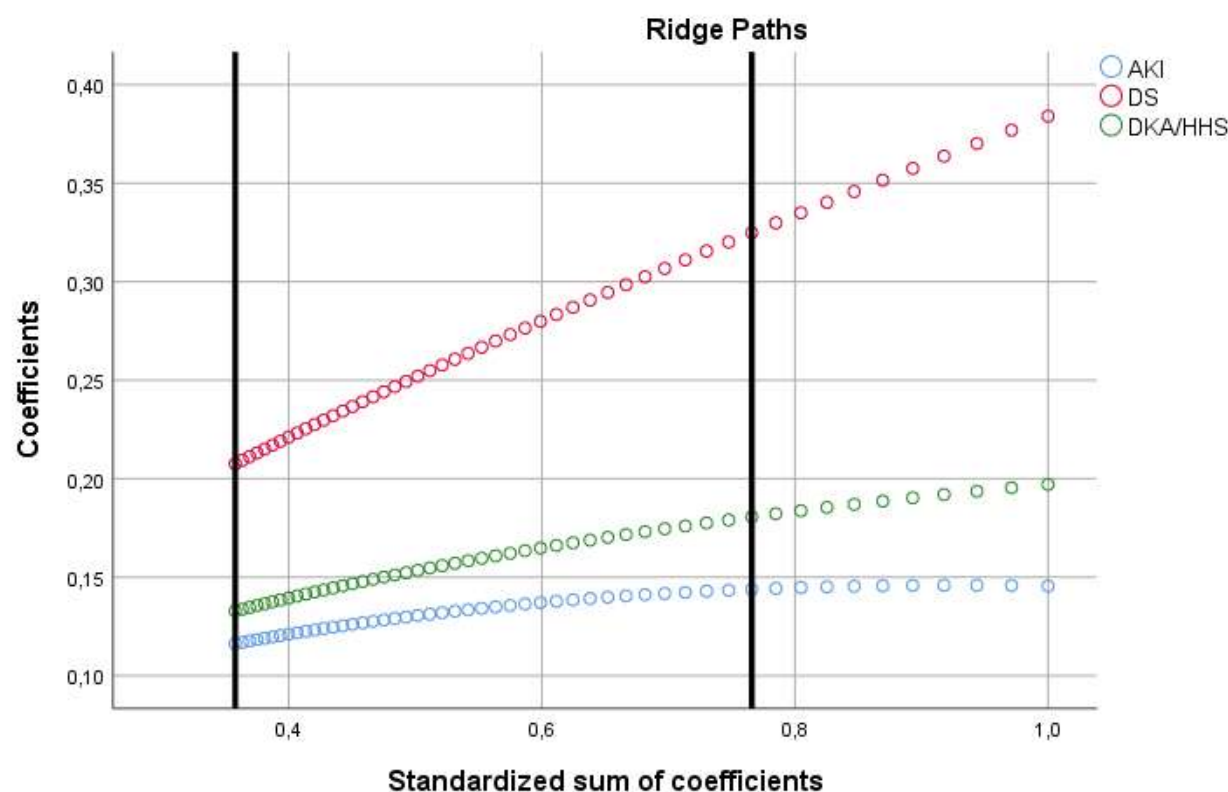


Figure 3. Ridge paths as derived from optimal scaling regularization process; the most parsimonious multivariate model is highly significant ($P=10^{-4}$), suggesting that COVID-19 Disease Severity 4 ($P=3 \cdot 10^{-8}$, tolerance: 0.838), simultaneous presence of DKA and HHS ($P=0.021$, tolerance: 0.803), and development of AKI ($P=0.037$, tolerance: 0.788) are all independently correlated with death.



X-axis reference lines at optimal model and at most parsimonious model within 1 Std. Error.

References

1. Zhou F, Yu T, Du R, Fan G, Liu Y, Liu Z, Xiang J, Wang Y, Song B, Gu X, Guan L, Wei Y, Li H, Wu X, Xu J, Tu S, Zhang Y, Chen H, Cao B. Clinical course and risk factors for mortality of adult inpatients with COVID-19 in Wuhan, China: a retrospective cohort study. *Lancet*. 2020 Mar 28;395(10229):1054-1062. doi: 10.1016/S0140-6736(20)30566-3. Epub 2020 Mar 11. Erratum in: *Lancet*. 2020 Mar 28;395(10229):1038. Erratum in: *Lancet*. 2020 Mar 28;395(10229):1038. PMID: 32171076; PMCID: PMC7270627.
2. Ma WX, Ran XW. [The Management of Blood Glucose Should be Emphasized in the Treatment of COVID-19]. *Sichuan Da Xue Xue Bao Yi Xue Ban*. 2020 Mar;51(2):146-150. Chinese. doi: 10.12182/20200360606. PMID: 32220179.
3. Kuchay MS, Reddy PK, Gagneja S, Mathew A, Mishra SK. Short term follow-up of patients presenting with acute onset diabetes and diabetic ketoacidosis during an episode of COVID-19. *Diabetes Metab Syndr*. 2020 Oct 21;14(6):2039-2041. doi: 10.1016/j.dsx.2020.10.015. Epub ahead of print. PMID: 33113470; PMCID: PMC7577220.
4. Gregory JM, Slaughter JC, Duffus SH, Smith TJ, LeSturgeon LM, Jaser SS, McCoy AB, Luther JM, Giovannetti ER, Boeder S, Pettus JH, Moore DJ. COVID-19 Severity Is Tripled in the Diabetes Community: A Prospective Analysis of the Pandemic's Impact in Type 1 and Type 2 Diabetes. *Diabetes Care*. 2020 Dec 2;dc202260. doi: 10.2337/dc20-2260. Epub ahead of print. PMID: 33268335.
5. McGurnaghan SJ, Weir A, Bishop J, Kennedy S, Blackburn LAK, McAllister DA, Hutchinson S, Caparrotta TM, Mellor J, Jeyam A, O'Reilly JE, Wild SH, Hatam S, Höhn A, Colombo M, Robertson C, Lone N, Murray J, Butterly E, Petrie J, Kennon B, McCrimmon R, Lindsay R, Pearson E, Sattar N, McKnight J, Philip S, Collier A, McMenamin J, Smith-Palmer A, Goldberg D, McKeigue PM, Colhoun HM; Public Health Scotland COVID-19 Health Protection Study Group; Scottish Diabetes Research Network Epidemiology Group. Risks of and risk factors for COVID-19 disease in people with diabetes: a cohort study of the total population of Scotland. *Lancet Diabetes Endocrinol*. 2020 Dec 23:S2213-8587(20)30405-8. doi: 10.1016/S2213-8587(20)30405-8. Epub ahead of print. PMID: 33357491.
6. Al Hayek AA, Robert AA, Alotaibi ZK, Al Dawish M. Clinical characteristics of hospitalized and home isolated COVID-19 patients with type 1 diabetes. *Diabetes Metab Syndr*. 2020 Sep 10;14(6):1841-1845. doi: 10.1016/j.dsx.2020.09.013. Epub ahead of print. PMID: 32971511; PMCID: PMC7481862.
7. Chowdhury S, Goswami S. COVID-19 and type 1 diabetes: dealing with the difficult duo. *Int J Diabetes Dev Ctries*. 2020 Jul 14:1-6. doi: 10.1007/s13410-020-00846-z. Epub ahead of print. PMID: 32837091; PMCID: PMC7359765.
8. Wu C, Chen X, Cai Y, Xia J, Zhou X, Xu S, Huang H, Zhang L, Zhou X, Du C, Zhang Y, Song J, Wang S, Chao Y, Yang Z, Xu J, Zhou X, Chen D, Xiong W, Xu L, Zhou F, Jiang J, Bai C, Zheng J, Song Y. Risk Factors Associated With Acute Respiratory Distress Syndrome and Death in Patients With Coronavirus Disease 2019 Pneumonia in Wuhan, China. *JAMA Intern Med*. 2020 Jul 1;180(7):934-943. doi: 10.1001/jamainternmed.2020.0994. PMID: 32167524; PMCID: PMC7070509.
9. Yang JK, Lin SS, Ji XJ, Guo LM. Binding of SARS coronavirus to its receptor damages islets and causes acute diabetes. *Acta Diabetol*. 2010 Sep;47(3):193-9. doi: 10.1007/s00592-009-0109-4. Epub 2009 Mar 31. PMID: 19333547; PMCID: PMC7088164.
10. Muniangi-Muhitu H, Akalestou E, Salem V, Misra S, Oliver NS, Rutter GA. Covid-19 and Diabetes: A Complex Bidirectional Relationship. *Front Endocrinol (Lausanne)*. 2020 Oct 8;11:582936. doi: 10.3389/fendo.2020.582936. PMID: 33133024; PMCID: PMC7578412.
11. Coate KC, Cha J, Shrestha S, Wang W, Gonçalves LM, Almacá J, Kapp ME, Fasolino M, Morgan A, Dai C, Saunders DC, Bottino R, Aramandla R, Jenkins R, Stein R, Kaestner KH, Vahedi G; HPAP Consortium, Brissova M, Powers AC. SARS-CoV-2 Cell Entry Factors ACE2 and TMPRSS2 Are Expressed in the Microvasculature and Ducts of Human Pancreas but Are Not Enriched in β Cells. *Cell Metab*. 2020 Dec 1;32(6):1028-1040.e4. doi: 10.1016/j.cmet.2020.11.006. Epub 2020 Nov 13. PMID: 33207245; PMCID: PMC7664344.
12. Armeni E, Aziz U, Qamar S, Nasir S, Nethaji C, Negus R, Murch N, Beynon HC, Bouloux P, Rosenthal M, Khan S, Yousseif A, Menon R, Karra E. Protracted ketonaemia in hyperglycaemic emergencies in COVID-19: a retrospective case series. *Lancet Diabetes Endocrinol*. 2020 Aug;8(8):660-663. doi: 10.1016/S2213-8587(20)30221-7. Epub 2020 Jul 1. PMID: 32621809; PMCID: PMC7329282.

13. Tsai PH, Lai WY, Lin YY, Luo YH, Lin YT, Chen HK, Chen YM, Lai YC, Kuo LC, Chen SD, Chang KJ, Liu CH, Chang SC, Wang FD, Yang YP. Clinical Manifestation and Disease Progression in COVID-19 Infection. *J Chin Med Assoc.* 2020 Nov 19; Publish Ahead of Print. doi: 10.1097/JCMA.0000000000000463. Epub ahead of print. PMID: 33230062.
14. Beliard K, Ebekozién O, Demeterco-Berggren C, Alonso GT, Gallagher MP, Clements M, Rapaport R. Increased DKA at presentation among newly diagnosed type 1 diabetes patients with or without COVID-19: Data from a multi-site surveillance registry. *J Diabetes.* 2020 Dec 7. doi: 10.1111/1753-0407.13141. Epub ahead of print. PMID: 33283979.
15. Muneer M, Akbar I. Acute Metabolic Emergencies in Diabetes: DKA, HHS and EDKA. *Adv Exp Med Biol.* 2021;1307:85-114. doi: 10.1007/5584_2020_545. PMID: 32488607.
16. Umpierrez G, Korytkowski M. Diabetic emergencies - ketoacidosis, hyperglycaemic hyperosmolar state and hypoglycaemia. *Nat Rev Endocrinol.* 2016 Apr;12(4):222-32. doi: 10.1038/nrendo.2016.15. Epub 2016 Feb 19. PMID: 26893262.
17. Rosenstock J, Ferrannini E. Euglycemic Diabetic Ketoacidosis: A Predictable, Detectable, and Preventable Safety Concern With SGLT2 Inhibitors. *Diabetes Care.* 2015 Sep;38(9):1638-42. doi: 10.2337/dc15-1380. PMID: 26294774.
18. Khawandanah J. Double or hybrid diabetes: A systematic review on disease prevalence, characteristics and risk factors. *Nutr Diabetes.* 2019 Nov 4;9(1):33. doi: 10.1038/s41387-019-0101-1. PMID: 31685799; PMCID: PMC6828774.
19. Chamorro-Pareja N, Parthasarathy S, Annam J, Hoffman J, Coyle C, Kishore P. Letter to the editor: Unexpected high mortality in COVID-19 and diabetic ketoacidosis. *Metabolism.* 2020 Sep;110:154301. doi: 10.1016/j.metabol.2020.154301. Epub 2020 Jun 24. PMID: 32589899; PMCID: PMC7311346.
20. Pal R, Banerjee M, Yadav U, Bhattacharjee S. Clinical profile and outcomes in COVID-19 patients with diabetic ketoacidosis: A systematic review of literature. *Diabetes Metab Syndr.* 2020 Aug 18;14(6):1563-1569. doi: 10.1016/j.dsx.2020.08.015. Epub ahead of print. PMID: 32853901; PMCID: PMC7434433.
21. Fleming N, Sacks LJ, Pham C, Neoh SL, Ekinici E. An overview of COVID-19 in people with diabetes pathophysiology and considerations in the inpatient setting. *Diabet Med.* 2020 Dec 29:e14509. doi: 10.1111/dme.14509. Epub ahead of print. PMID: 33377213.
22. Stroup DF, Berlin JA, Morton SC, Olkin I, Williamson GD, Rennie D, Moher D, Becker BJ, Sipe TA, Thacker SB. Meta-analysis of observational studies in epidemiology: a proposal for reporting. Meta-analysis Of Observational Studies in Epidemiology (MOOSE) group. *JAMA.* 2000 Apr 19;283(15):2008-12. doi: 10.1001/jama.283.15.2008. PMID: 10789670.
23. Shea BJ, Reeves BC, Wells G et al. AMSTAR 2: a critical appraisal tool for systematic reviews that include randomised or non-randomised studies of healthcare interventions, or both. *BMJ* 2017;21:358;j4008.
24. Rainkie DC, Abedini ZS, Abdelkader NN. Reporting and methodological quality of systematic reviews and meta-analysis with protocols in Diabetes Mellitus Type II: A systematic review. *PLoS One.* 2020 Dec 16;15(12):e0243091. doi: 10.1371/journal.pone.0243091. PMID: 33326429; PMCID: PMC7743973.
25. Hadjadj J, Yatim N, Barnabei L, Corneau A, Boussier J, Smith N, Péré H, Charbit B, Bondet V, Chenevier-Gobeaux C, Breillat P, Carlier N, Gauzit R, Morbieu C, Pène F, Marin N, Roche N, Szwebel T-A, Merkling SH, Treluyer J-M, Veyer D, Mouthon L, Blanc C, Tharaux P-L, Rozenberg F, Fischer A, Duffy D, Rieux-Laucat F, Kernéis S, et al. Impaired type I interferon activity and inflammatory responses in severe COVID-19 patients. *Science* 2020;369:718–724.
26. Munn Z, Barker TH, Moola S, Tufanaru C, Stern C, McArthur A, Stephenson M, Aromataris E. Methodological quality of case series studies: an introduction to the JBI critical appraisal tool. *JBI Database System Rev Implement Rep.* 2019 Sep 23. doi: 10.11124/JBISRIR-D-19-00099. Epub ahead of print. PMID: 31567557.
27. Ma LL, Wang YY, Yang ZH, Huang D, Weng H, Zeng XT. Methodological quality (risk of bias) assessment tools for primary and secondary medical studies: what are they and which is better? *Mil Med Res.* 2020 Feb 29;7(1):7. doi: 10.1186/s40779-020-00238-8. PMID: 32111253; PMCID: PMC7049186.
28. Moola S, Munn Z, Tufanaru C, Aromataris E, Sears K, Sfetcu R, Currie M, Qureshi R, Mattis P, Lisy K, Mu P-F. Chapter 7: Systematic reviews of etiology and risk. In: Aromataris E, Munn Z (Editors). *Joanna Briggs Institute Reviewer's Manual*. The Joanna Briggs Institute, 2017. Available from <https://reviewersmanual.joannabriggs.org/>

29. Murad MH, Sultan S, Haffar S, Bazerbachi F. Methodological quality and synthesis of case series and case reports. *BMJ Evid Based Med*. 2018 Apr;23(2):60-63. doi: 10.1136/bmjebm-2017-110853. Epub 2018 Feb 2. PMID: 29420178; PMCID: PMC6234235.
30. Review Manager Web (RevMan Web). The Cochrane Collaboration, 2019. Available at revman.cochrane.org.
31. Palermo NE, Sadhu AR, McDonnell ME. Diabetic Ketoacidosis in COVID-19: Unique Concerns and Considerations. *J Clin Endocrinol Metab*. 2020 Aug 1;105(8):dgaa360. doi: 10.1210/clinem/dgaa360. PMID: 32556147; PMCID: PMC7337869.
32. Reddy PK, Kuchay MS, Mehta Y, Mishra SK. Diabetic ketoacidosis precipitated by COVID-19: A report of two cases and review of literature. *Diabetes Metab Syndr*. 2020 Sep-Oct;14(5):1459-1462. doi: 10.1016/j.dsx.2020.07.050. Epub 2020 Aug 1. PMID: 32771918; PMCID: PMC7395228.
33. Chee YJ, Ng SJH, Yeoh E. Diabetic ketoacidosis precipitated by Covid-19 in a patient with newly diagnosed diabetes mellitus. *Diabetes Res Clin Pract*. 2020 Jun;164:108166. doi: 10.1016/j.diabres.2020.108166. Epub 2020 Apr 24. PMID: 32339533; PMCID: PMC7194589.
34. Li J, Wang X, Chen J, Zuo X, Zhang H, Deng A. COVID-19 infection may cause ketosis and ketoacidosis. *Diabetes Obes Metab*. 2020 Oct;22(10):1935-1941. doi: 10.1111/dom.14057. Epub 2020 May 18. PMID: 32314455; PMCID: PMC7264681.
35. Fang J, Genco M, Caskey RN. COVID-19 Precipitating Euglycaemic Diabetic Ketoacidosis with SGLT2 Inhibitor Use. *Eur J Case Rep Intern Med*. 2020 Oct 26;7(11):001943. doi: 10.12890/2020_001943. PMID: 33194873; PMCID: PMC7655000.
36. Daniel S, Gadhiya B, Parikh A, Joshi P. COVID-19 in a Child With Diabetic Ketoacidosis: An Instigator, a Deviator or a Spectator. *Indian Pediatr*. 2020 Oct 15;57(10):969-970. doi: 10.1007/s13312-020-2008-2. Epub 2020 Jul 15. PMID: 32683339; PMCID: PMC7605459.
37. Tollard C, Champenois V, Delemer B, Carsin-Vu A, Barraud S. An inaugural diabetic ketoacidosis with acute pancreatitis during COVID-19. *Acta Diabetol*. 2020 Nov 13:1–3. doi: 10.1007/s00592-020-01624-3. Epub ahead of print. PMID: 33184733; PMCID: PMC7661328.
38. Chan KH, Thimmareddygar D, Ramahi A, Atallah L, Baranetsky NG, Slim J. Clinical characteristics and outcome in patients with combined diabetic ketoacidosis and hyperosmolar hyperglycemic state associated with COVID-19: A retrospective, hospital-based observational case series. *Diabetes Res Clin Pract*. 2020 Aug;166:108279. doi: 10.1016/j.diabres.2020.108279. Epub 2020 Jun 25. PMID: 32592843; PMCID: PMC7314685.
39. Goldman N, Fink D, Cai J, Lee YN, Davies Z. High prevalence of COVID-19-associated diabetic ketoacidosis in UK secondary care. *Diabetes Res Clin Pract*. 2020 Aug;166:108291. doi: 10.1016/j.diabres.2020.108291. Epub 2020 Jun 29. PMID: 32615280; PMCID: PMC7323680.
40. Oriot P, Hermans MP. Euglycemic diabetic ketoacidosis in a patient with type 1 diabetes and SARS-CoV-2 pneumonia: case report and review of the literature. *Acta Clin Belg*. 2020 Jun 16:1-5. doi: 10.1080/17843286.2020.1780390. Epub ahead of print. PMID: 32544373.
41. Meza JL, Triana A, De Avila I, Del Rio-Pertuz G, Viasus D. Diabetic Ketoacidosis Precipitated by COVID-19 in Patients Without Respiratory Symptoms: Case Reports. *Cureus*. 2020 Aug 25;12(8):e10031. doi: 10.7759/cureus.10031. PMID: 32983724; PMCID: PMC7515799.
42. Batista DV, Vieira CAFA, Costa TA, Lima EG. COVID-19-associated euglycemic diabetic ketoacidosis in a patient with type 2 diabetes on SGLT2 inhibitor: a case report. *Diabetol Int*. 2020 Oct 28:1-4. doi: 10.1007/s13340-020-00473-3. Epub ahead of print. PMID: 33133998; PMCID: PMC7592186.
43. Rafique S, Ahmed FW. A Case of Combined Diabetic Ketoacidosis and Hyperosmolar Hyperglycemic State in a Patient With COVID-19. *Cureus*. 2020 Jul 2;12(7):e8965. doi: 10.7759/cureus.8965. PMID: 32766007; PMCID: PMC7398733.
44. Heaney AI, Griffin GD, Simon EL. Newly diagnosed diabetes and diabetic ketoacidosis precipitated by COVID-19 infection. *Am J Emerg Med*. 2020 Nov;38(11):2491.e3-2491.e4. doi: 10.1016/j.ajem.2020.05.114. Epub 2020 Jun 6. PMID: 32536476; PMCID: PMC7274947.

45. Singh S, Foster A, Khan Z, Siddiqui A, Atere M, Nfonoyim JM. COVID-19-Induced Diabetic Ketoacidosis and Acute Respiratory Distress Syndrome in an Obese 24-Year-Old Type 1 Diabetic. *Am J Case Rep.* 2020 Oct 26;21:e925586. doi: 10.12659/AJCR.925586. PMID: 33104529; PMCID: PMC7598147.
46. Rabizadeh S, Hajmiri M, Rajab A, Emadi Kouchak H, Nakhjavani M. Severe diabetic ketoacidosis and coronavirus disease 2019 (COVID-19) infection in a teenage patient with newly diagnosed diabetes. *J Pediatr Endocrinol Metab.* 2020 Sep 25;33(9):1241-1243. doi: 10.1515/jpem-2020-0296. PMID: 32809963.
47. Emara MH, Mazid U, Atta MA, Elshahat S, Mahros AM. Ketonuria with or without ketoacidosis as the presenting manifestation of SARS-CoV-2 (COVID-19) among uncontrolled type 2 diabetic patients. *Med Hypotheses.* 2020 Nov;144:110226. doi: 10.1016/j.mehy.2020.110226. Epub 2020 Sep 2. PMID: 33254533; PMCID: PMC7462884.
48. Kim NY, Ha E, Moon JS, Lee YH, Choi EY. Acute Hyperglycemic Crises with Coronavirus Disease-19: Case Reports. *Diabetes Metab J.* 2020 Apr;44(2):349-353. doi: 10.4093/dmj.2020.0091. PMID: 32347027; PMCID: PMC7188962.
49. Croft A, Bucca A, Jansen JH, Motzkus C, Herbert A, Wang A, Hunter BR. First-time Diabetic Ketoacidosis in Type 2 Diabetics With Covid-19 Infection: A Novel Case Series. *J Emerg Med.* 2020 Nov;59(5):e193-e197. doi: 10.1016/j.jemermed.2020.07.017. Epub 2020 Jul 8. PMID: 32912646; PMCID: PMC7342034.
50. Haider MB, Abbas F, Hafeez W. A 46-Year-Old Woman Who Presented with Diabetic Ketoacidosis and COVID-19 Pneumonia with Multiple Pulmonary Thromboemboli: A Case Report. *Am J Case Rep.* 2020 Jul 20;21:e925794. doi: 10.12659/AJCR.925794. PMID: 32687485; PMCID: PMC7394556.
51. Alsadhan I, Alruwashid S, Alhamad M, Alajmi S, Alshehri S, Alfadhli E, Ekhzaimy A. Diabetic ketoacidosis precipitated by Coronavirus disease 2019 infection: Case series. *Curr Ther Res Clin Exp.* 2020;93:100609. doi: 10.1016/j.curtheres.2020.100609. Epub 2020 Oct 27. PMID: 33132404; PMCID: PMC7590633.
52. Cavalcanti DD, Raz E, Shapiro M, Dehkharghani S, Yaghi S, Lillemoe K, Nossek E, Torres J, Jain R, Riina HA, Radmanesh A, Nelson PK. Cerebral Venous Thrombosis Associated with COVID-19. *AJNR Am J Neuroradiol.* 2020 Aug;41(8):1370-1376. doi: 10.3174/ajnr.A6644. Epub 2020 Jun 18. PMID: 32554424; PMCID: PMC7658892.
53. Kaur P, Posimreddy S, Singh B, Qaqa F, Habib HA, Maroules M, Shamoon F. COVID-19 Presenting as Acute Limb Ischaemia. *Eur J Case Rep Intern Med.* 2020 May 19;7(6):001724. doi: 10.12890/2020_001724. PMID: 32523927; PMCID: PMC7279913.
54. Hollstein T, Schulte DM, Schulz J, Glück A, Ziegler AG, Bonifacio E, Wendorff M, Franke A, Schreiber S, Bornstein SR, Laudes M. Autoantibody-negative insulin-dependent diabetes mellitus after SARS-CoV-2 infection: a case report. *Nat Metab.* 2020 Oct;2(10):1021-1024. doi: 10.1038/s42255-020-00281-8. Epub 2020 Sep 2. PMID: 32879473.
55. Winn SP, Oo ZT, Htun NN, Soe MHP, Aung MM. Diabetic Ketoacidosis in Coronavirus Disease Patients With Type 2 Diabetes Mellitus. *Cureus.* 2020 Aug 14;12(8):e9731. doi: 10.7759/cureus.9731. PMID: 32953287; PMCID: PMC7491247.
56. Siddiqui RS, Zirkiyeva M, Saliq M. Onset of Ketosis-Prone Diabetes in the Setting of COVID-19 Infection. *Cureus.* 2020 Oct 3;12(10):e10779. doi: 10.7759/cureus.10779. PMID: 33154847; PMCID: PMC7606204.
57. Beaupre R 2nd, Petrie C, Toledo A. Mixed Purpuric and Maculopapular Lesions in a Patient with COVID-19: A Case Report. *Clin Pract Cases Emerg Med.* 2020 Aug;4(3):349-351. doi: 10.5811/cpcem.2020.6.48617. PMID: 32926683; PMCID: PMC7434262.
58. Gianniosis M, Zhang B, Choe M. Clinical dilemma of DKA and Covid-19 infection: A case report. *IDCases.* 2020;22:e00938. doi: 10.1016/j.idcr.2020.e00938. Epub 2020 Aug 22. PMID: 32864339; PMCID: PMC7443161.
59. Richard I, Robinson B, Dawson A, Aya A, Ali R. An Atypical Presentation of Fulminant Myocarditis Secondary to COVID-19 Infection. *Cureus.* 2020 Jul 14;12(7):e9179. doi: 10.7759/cureus.9179. PMID: 32802614; PMCID: PMC7425826.
60. Soliman AT, Al-Amri M, Alleethy K, Alaaraj N, Hamed N, De Sanctis V. Newly-onset type 1 diabetes mellitus precipitated by COVID-19 in an 8-month-old infant. *Acta Biomed.* 2020 Jul 13;91(3):ahead of print. doi: 10.23750/abm.v91i3.10074. PMID: 32921748; PMCID: PMC7717024.
61. Kabashneh S, Ali H, Alkassis S. Multi-Organ Failure in a Patient With Diabetes due to COVID-19 With Clear Lungs. *Cureus.* 2020 May 15;12(5):e8147. doi: 10.7759/cureus.8147. PMID: 32550066; PMCID: PMC7294884.

62. Kulick-Soper CV, McKee JL, Wolf RL, Mohan S, Stein JM, Masur JH, Lazor JW, Dunlap DG, McGinniss JE, David MZ, England RN, Rothstein A, Gelfand MA, Cucchiara BL, Davis KA. Pearls & Oysters: Bilateral globus pallidus lesions in a patient with COVID-19. *Neurology*. 2020 Sep 8;95(10):454-457. doi: 10.1212/WNL.0000000000010157. Epub 2020 Jun 25. PMID: 32586898; PMCID: PMC7538218.
63. Dass B, Beck A, Holmes C, Morton G. Euglycemic DKA (euDKA) as a presentation of COVID-19. *Clin Case Rep*. 2020 Nov 20;10.1002/ccr3.3540. doi: 10.1002/ccr3.3540. Epub ahead of print. PMID: 33362928; PMCID: PMC7753533.
64. Smati S, Mahot P, Bourdiol A, Ploteau S, Hadjadj S, Cariou B. Euglycaemic ketoacidosis during gestational diabetes with concomitant COVID-19 infection. *Diabetes Metab*. 2020 Jul 29;S1262-3636(20)30100-2. doi: 10.1016/j.diabet.2020.07.008. Epub ahead of print. PMID: 32738403; PMCID: PMC7387919.
65. Concepción Zavaleta MJ, Armas Flórez CD, Plasencia Dueñas EA, Coronado Arroyo JC. Diabetic ketoacidosis during COVID-19 pandemic in a developing country. *Diabetes Res Clin Pract*. 2020 Oct;168:108391. doi: 10.1016/j.diabres.2020.108391. Epub 2020 Aug 25. PMID: 32858095; PMCID: PMC7446718.
66. Cline TE, Sangha N. The case of a 69-year-old man with COVID-19 and encephalopathy. *Ann Clin Transl Neurol*. 2020 Nov 17;10.1002/acn3.51250. doi: 10.1002/acn3.51250. Epub ahead of print. PMID: 33202116; PMCID: PMC7753387.
67. Raghunandan S, Josephson CD, Verkerke H, Linam WM, Ingram TC, Zerra PE, Arthur CM, Stowell SR, Briones M, Chonat S. Complement inhibition in Severe COVID-19 Acute Respiratory Distress Syndrome. *Front Pediatr* 2020;8:895 DOI=10.3389/fped.2020.616731.
68. Panjawatnan P, Jha S, Hughes J, Riesenfeld E. A Case of Concomitant COVID-19 Infection-Induced Acute Respiratory Distress Syndrome and Diabetic Ketoacidosis: Another Challenge in Fluid Management. *Cureus*. 2020 Nov 30;12(11):e11805. doi: 10.7759/cureus.11805. PMID: 33409050; PMCID: PMC7779151.
69. Xu C, Zia U. Recovery From Acute Kidney Injury With Diabetic Ketoacidosis Following SARS-CoV-2 Infection: A Case Report and Literature Review. *Cureus*. 2020 Nov 25;12(11):e11702. doi: 10.7759/cureus.11702. PMID: 33391935; PMCID: PMC7769828.
70. Kayina CA, Maitra S, Anand RK, Ray BR, Baidya DK, Subramaniam R. SARS-CoV-2 Infection Presenting with Hyperglycemia and Ketosis: A Case Series of Three Diabetic Patients. *Indian J Crit Care Med*. 2020 Nov;24(11):1141-1142. doi: 10.5005/jp-journals-10071-23595. PMID: 33384527; PMCID: PMC7751029.
71. Alkundi A, Mahmoud I, Musa A, Naveed S, Alshawwaf M. Clinical characteristics and outcomes of COVID-19 hospitalized patients with diabetes in the United Kingdom: A retrospective single centre study. *Diabetes Res Clin Pract*. 2020 Jul;165:108263. doi: 10.1016/j.diabres.2020.108263. Epub 2020 Jun 10. PMID: 32531325; PMCID: PMC7283049.
72. Makris K, Spanou L. Acute Kidney Injury: Definition, Pathophysiology and Clinical Phenotypes. *Clin Biochem Rev*. 2016 May;37(2):85-98. PMID: 28303073; PMCID: PMC5198510.
73. Pasquel FJ, Umpierrez GE. Hyperosmolar hyperglycemic state: a historic review of the clinical presentation, diagnosis, and treatment. *Diabetes Care*. 2014 Nov;37(11):3124-31. doi: 10.2337/dc14-0984. PMID: 25342831; PMCID: PMC4207202.
74. Bhowmick SK, Levens KL, Rettig KR. Hyperosmolar hyperglycemic crisis: an acute life-threatening event in children and adolescents with type 2 diabetes mellitus. *Endocr Pract*. 2005 Jan-Feb;11(1):23-9. doi: 10.4158/EP.11.1.23. PMID: 16033732.
75. Fadini GP, de Kreutzenberg SV, Rigato M, Brocco S, Marchesan M, Tiengo A, Avogaro A. Characteristics and outcomes of the hyperglycemic hyperosmolar non-ketotic syndrome in a cohort of 51 consecutive cases at a single center. *Diabetes Res Clin Pract*. 2011 Nov;94(2):172-9. doi: 10.1016/j.diabres.2011.06.018. Epub 2011 Jul 12. PMID: 21752485.
76. Lang KS, Weigert C, Braedel S, Fillon S, Palmada M, Schleicher E, Rammensee HG, Lang F. Inhibition of interferon-gamma expression by osmotic shrinkage of peripheral blood lymphocytes. *Am J Physiol Cell Physiol*. 2003 Jan;284(1):C200-8. doi: 10.1152/ajpcell.00259.2002. PMID: 12475762
77. Menghoum N, Oriot P, Hermans MP, Mariage JL. Cétose ou acidocétose diabétique euglycémique chez des patients diabétiques de type 2 traités par inhibiteurs du SGLT2 : une série de cas cliniques en Belgique [Diabetic euglycemic ketosis or ketoacidosis in individuals with type 2 diabetes treated by SGLT2 inhibitors: A series of Belgian clinical cases]. *Rev Med Interne*. 2020 Apr;41(4):226-231. French. doi: 10.1016/j.revmed.2019.12.006. Epub 2019 Dec 19. PMID: 31866073.

78. Ozer O, Yorulmaz G. Euglycemic Diabetic Ketoacidosis Associated with Empagliflozin Use in the Course of the SARS-Cov-2 Pandemic. *J Coll Physicians Surg Pak*. 2020 Oct;30(10):110-111. doi: 10.29271/jcsp.2020.supp2.110. PMID: 33115581.
79. Milder TY, Stocker SL, Day RO, Greenfield JR. Potential Safety Issues with Use of Sodium-Glucose Cotransporter 2 Inhibitors, Particularly in People with Type 2 Diabetes and Chronic Kidney Disease. *Drug Saf*. 2020 Dec;43(12):1211-1221. doi: 10.1007/s40264-020-01010-6. Epub 2020 Oct 23. PMID: 33095409; PMCID: PMC7582030.
80. Koufakis T, Metallidis S, Zebekakis P, Ajjan RA, Kotsa K. Sodium-Glucose Cotransporter 2 Inhibitors in the Era of COVID-19 Pandemic: Is the Benefit to Risk Ratio Still Favorable? *J Diabetes Sci Technol*. 2020 Jul;14(4):745-747. doi: 10.1177/1932296820932155. Epub 2020 Jun 2. PMID: 32486846; PMCID: PMC7673172.
81. Handelsman Y, Henry RR, Bloomgarden ZT, Dagogo-Jack S, DeFronzo RA, Einhorn D, Ferrannini E, Fonseca VA, Garber AJ, Grunberger G, LeRoith D, Umpierrez GE, Weir MR. AMERICAN ASSOCIATION OF CLINICAL ENDOCRINOLOGISTS AND AMERICAN COLLEGE OF ENDOCRINOLOGY POSITION STATEMENT ON THE ASSOCIATION OF SGLT-2 INHIBITORS AND DIABETIC KETOACIDOSIS. *Endocr Pract*. 2016 Jun;22(6):753-62. doi: 10.4158/EP161292.PS. Epub 2016 Jun 1. PMID: 27082665.
82. Orioli L, Hermans MP, Thissen JP, Maiter D, Vandeleene B, Yombi JC. COVID-19 in diabetic patients: Related risks and specifics of management. *Ann Endocrinol (Paris)*. 2020 Jun;81(2-3):101-109. doi: 10.1016/j.ando.2020.05.001. Epub 2020 May 12. PMID: 32413342; PMCID: PMC7217100.
83. Chen Y, Yang D, Cheng B, Chen J, Peng A, Yang C, Liu C, Xiong M, Deng A, Zhang Y, Zheng L, Huang K. Clinical Characteristics and Outcomes of Patients With Diabetes and COVID-19 in Association With Glucose-Lowering Medication. *Diabetes Care*. 2020 Jul;43(7):1399-1407. doi: 10.2337/dc20-0660. Epub 2020 May 14. PMID: 32409498.
84. Roca-Ho H, Riera M, Palau V, Pascual J, Soler MJ. Characterization of ACE and ACE2 Expression within Different Organs of the NOD Mouse. *Int J Mol Sci*. 2017 Mar 5;18(3):563. doi: 10.3390/ijms18030563. PMID: 28273875; PMCID: PMC5372579.
85. Boddu SK, Aurangabadkar G, Kuchay MS. New onset diabetes, type 1 diabetes and COVID-19. *Diabetes Metab Syndr*. 2020 Nov-Dec;14(6):2211-2217. doi: 10.1016/j.dsx.2020.11.012. Epub 2020 Nov 17. PMID: 33395782; PMCID: PMC7669477.
86. Chee YJ, Tan SK, Yeoh E. Dissecting the interaction between COVID-19 and diabetes mellitus. *J Diabetes Investig*. 2020 Sep;11(5):1104-1114. doi: 10.1111/jdi.13326. Epub 2020 Aug 5. PMID: 32558211; PMCID: PMC7323255.
87. Rayman G, Lumb A, Kennon B, Cottrell C, Nagi D, Page E, Voigt D, Courtney H, Atkins H, Platts J, Higgins K, Dhatariya K, Patel M, Narendran P, Kar P, Newland-Jones P, Stewart R, Burr O, Thomas S. Guidance on the management of Diabetic Ketoacidosis in the exceptional circumstances of the COVID-19 pandemic. *Diabet Med*. 2020 Jul;37(7):1214-1216. doi: 10.1111/dme.14328. Epub 2020 Jun 8. PMID: 32421882; PMCID: PMC7276743.
88. Bornstein SR, Rubino F, Khunti K, Mingrone G, Hopkins D, Birkenfeld AL, Boehm B, Amiel S, Holt RI, Skyler JS, DeVries JH, Renard E, Eckel RH, Zimmet P, Alberti KG, Vidal J, Geloneze B, Chan JC, Ji L, Ludwig B. Practical recommendations for the management of diabetes in patients with COVID-19. *Lancet Diabetes Endocrinol*. 2020 Jun;8(6):546-550. doi: 10.1016/S2213-8587(20)30152-2. Epub 2020 Apr 23. PMID: 32334646; PMCID: PMC7180013.
89. Priyambada L, Wolfsdorf JL, Brink SJ, Fritsch M, Codner E, Donaghue KC, Craig ME. ISPAD Clinical Practice Consensus Guideline: Diabetic ketoacidosis in the time of COVID-19 and resource-limited settings-role of subcutaneous insulin. *Pediatr Diabetes*. 2020 Dec;21(8):1394-1402. doi: 10.1111/peidi.13118. Epub 2020 Oct 12. PMID: 32935435.
90. Fignani D, Licata G, Brusco N, Nigi L, Grieco GE, Marselli L, Overbergh L, Gysemans C, Colli ML, Marchetti P, Mathieu C, Eizirik DL, Sebastiani G, Dotta F. SARS-CoV-2 Receptor Angiotensin I-Converting Enzyme Type 2 (ACE2) Is Expressed in Human Pancreatic β -Cells and in the Human Pancreas Microvasculature. *Front Endocrinol (Lausanne)*. 2020 Nov 13;11:596898. doi: 10.3389/fendo.2020.596898. PMID: 33281748; PMCID: PMC7691425.
91. Apicella M, Campopiano MC, Mantuano M, Mazoni L, Coppelli A, Del Prato S. COVID-19 in people with diabetes: understanding the reasons for worse outcomes. *Lancet Diabetes Endocrinol*. 2020 Sep;8(9):782-792. doi: 10.1016/S2213-8587(20)30238-2. Epub 2020 Jul 17. Erratum in: *Lancet Diabetes Endocrinol*. 2020 Oct;8(10):e5. Erratum in: *Lancet Diabetes Endocrinol*. 2020 Nov;8(11):e6. PMID: 32687793; PMCID: PMC7367664.

92. Sandooja R, Vura NVRK, Morocco M. Heightened ACE Activity and Unfavorable Consequences in COVID-19 Diabetic Subjects. Int J Endocrinol. 2020 Jul 16;2020:7847526. doi: 10.1155/2020/7847526. PMID: 32724306; PMCID: PMC7364265
93. Nissen T, Wynn R. The clinical case report: a review of its merits and limitations. BMC Res Notes. 2014 Apr 23;7:264. doi: 10.1186/1756-0500-7-264. PMID: 24758689; PMCID: PMC4001358.

Supplementary Table 1. Case report studies excluded in the present meta-analysis (n=3).

Study	Origin	EP	Sex	Age	BMI	HbA _{1c}	DM rec	DM medication	Comorb idities	Day	DS	CRP	Ferr	DD	Glu	Osm	pH	Bic	Ket	Lac	β-HB	AG	AKI	Outco me
Naguib	USA	DKA	F	8	?	12.0	No	(-)	(-)	?	1	241	715	1.0	429	284	7.30	14.0	?	?	?	?	No	Dis
Ozer [78]	Turkey	EDKA	F	42	?	?	Yes	MET/1000, EMP/10	T2D, AH	?	4	?	?	?	196	?	7.08	8.9	?	?	?	20	No	Dis
Machron	UK	DKA	F	28	?	12.9	Yes	?	T1D	?	1	35	?	?	401	?	7.00	3.2	3.8	?	?	?	No	Dis

EP: endpoint; BMI: body mass index; DS: disease severity; CRP: C-reactive protein; DD: d-dimers; Osm: serum osmolality; Bic: arterial blood bicarbonate; Ket: arterial blood ketones; β-HB: beta-hydroxybutyrate; AG: anion gap; AKI: acute kidney injury; EDKA: euglycemic diabetic ketoacidosis; MET: metformin; EMP: empagliflozin.

Supplementary References

- S1. Naguib MN, Raymond JK, Vidmar AP. New onset diabetes with diabetic ketoacidosis in a child with multisystem inflammatory syndrome due to COVID-19. J Pediatr Endocrinol Metab. 2020 Nov 12:/j/jpem.ahead-of-print/jpem-2020-0426/jpem-2020-0426.xml. doi: 10.1515/jpem-2020-0426. Epub ahead of print. PMID: 33180050.
- S2. Marchon KA, Nunn MO, Chakera AJ. Images of the month: An incidental finding of spontaneous pneumomediastinum (Hamman's syndrome) secondary to diabetic ketoacidosis during the coronavirus pandemic. Clin Med (Lond). 2020 Nov;20(6):e275-e277. doi: 10.7861/clinmed.2020-0739. PMID: 33199339; PMCID: PMC7687302.