

**Supplementary Table 1:** Qualitive scoring criteria used for head-to-head comparison between Standard and Wave-FLAIR

Parameter	Favors image A*		0	Favors image B*	
	-1	-2		+1	+2
<b>Conspicuity/visualization of lesions</b>	Lesions are less well visualized/conspicuous on image B and some lesions are missed	Lesions are less well visualized/conspicuous on image B but all lesions are still visualized	Equivalent	Lesions are less well visualized/conspicuous on image A but all lesions are still visualized	Lesions are less well visualized/conspicuous on image A and some lesions are missed
<b>Motion:</b> perceptible motion artifact when the images are optimally windowed	The B image has more motion artifacts that obscure small lesions.	The B image has more motion artifacts but it does not obscure small lesions.	Equivalent	The A image has more motion artifacts but it does not obscure small lesions.	The A image has more motion artifacts that obscures small lesions.
<b>Pulsation artifact</b>	Image B has more artifact and the artifact obscures underlying lesion(s).	Image B has more artifact but no lesions are obscured.	Equivalent	Image A has more artifact but no lesions are obscured.	Image A has more artifact and the artifact obscures underlying lesion(s).
<b>Noise:</b> perceptible noise level when the images are optimally windowed	Background noise of the B image perceptibly greater than the A image and affects the visualization of underlying structures.	Background noise of the B image perceptibly greater than the A image and does not affect the visualization of underlying structures.	Equivalent	Background noise of the A image is perceptibly greater than the B image and does not affect the visualization of underlying structures.	Background noise of the A image is perceptibly greater than the B image and affects the visualization of underlying structures.
<b>Overall diagnostic quality</b>	The B image has poorer image quality and the difference in quality affects the final clinical diagnosis.	The B image has poorer image quality but it does not affect the final clinical diagnosis.	Equivalent	The A image has poorer image quality but it does not affect the final clinical diagnosis.	The A image has poorer image quality and the difference in quality affects the final clinical diagnosis.

\*The Standard and Wave-FLAIR sequences were randomly positioned on either the right or left side of the screen, labeled image A and image B.

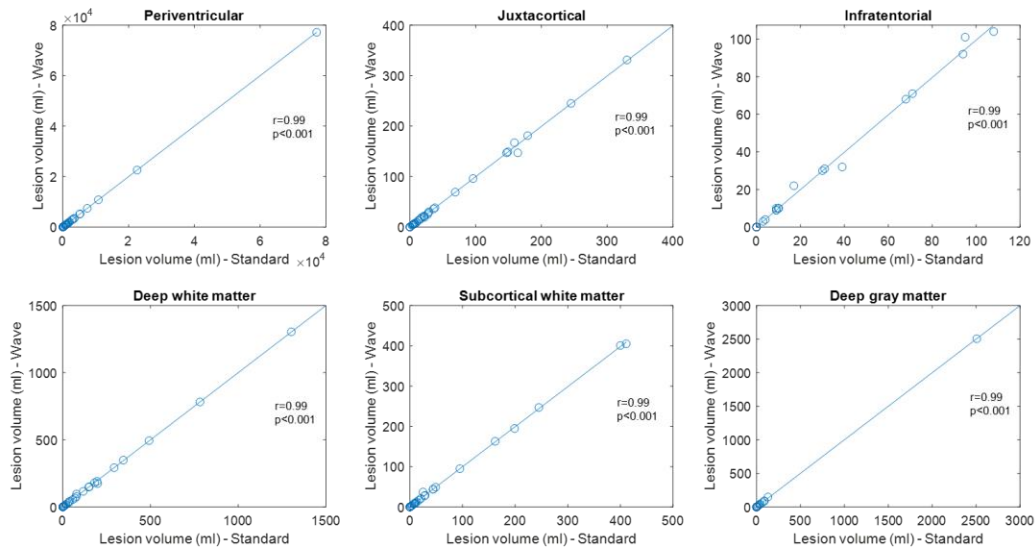
**Supplementary Table 2.** Clinical characteristics of the patients

Characteristics	Whole cohort (n=42)	Included in Quantitative Analysis (N=36)*
<b>Female (%)</b>	33 (78.6%)	28 (77.8%)
<b>Age (year) (mean and range)</b>	44.5 (23-78)	44.8 (23-78)
<b>20-ch Coil (%)</b>	36 (85.7%)	30 (83.3%)
<b>Study indication</b>		
<b>Rule out</b> demyelinating disease	18 (42.9%)	14 (38.9%)
Follow up of demyelinating disease	23 (54.8%)	21 (58.3%)
Other	1 (2.4%)	1 (2.8%)
<b>Order of the sequences</b>		
<b>Standard before Wave-FLAIR (%)</b>	22 (52.4%)	17 (47.2%)

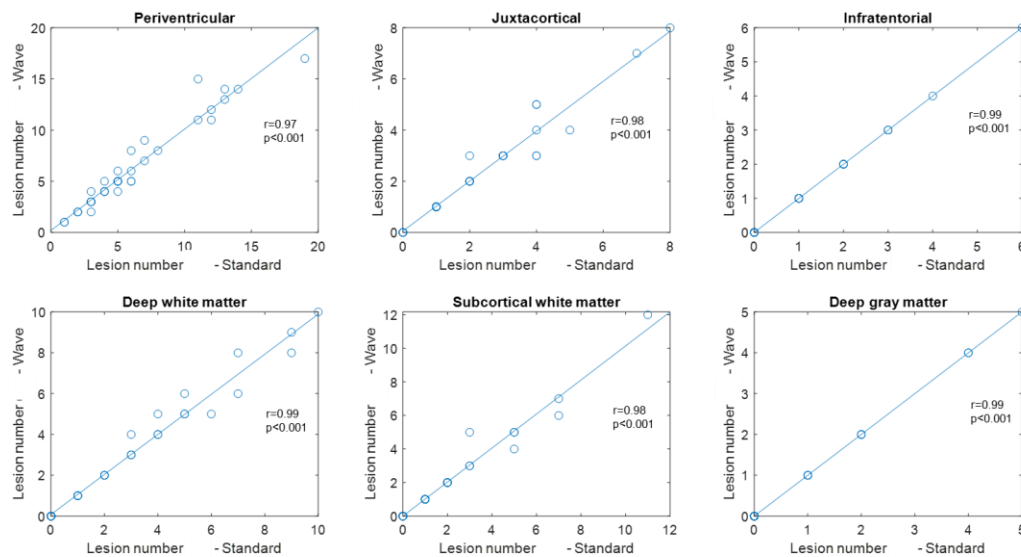
\*Six patients were excluded from the LST quantitative analysis due to absence of detectable lesions and/or severe motion artifact resulting in failure of the automated LST processing stream.

**Supplementary Table 3:** Comparison of number of lesions in brain regions between Standard and Wave-FLAIR

Brain regions	Standard		WAVE		Student's t-test
	Lesions in all patients (number)	Mean ( $\pm$ SD)	Lesions in all patients (number)	Mean ( $\pm$ SD)	p-value
<b>Whole brain</b>	520	14.4 (9.8)	529	14.7 (9.7)	0.91
<b>Periventricular</b>	223	6.19 (4.25)	228	6.33 (4.33)	0.89
<b>Juxtacortical</b>	79	2.19 (1.89)	79	2.19 (1.89)	0.99
<b>Infra-tentorial</b>	35	0.97 (1.4)	35	0.97 (1.4)	0.99
<b>Deep white matter</b>	99	2.75 (2.9)	100	2.78 (2.9)	0.97
<b>Subcortical white matter</b>	71	1.97 (2.47)	72	2 (2.54)	0.96
<b>Deep gray matter</b>	24	0.67 (1.29)	24	0.67 (1.29)	0.99



**Supplementary Figure 1.** Scatter plots of lesion volume of Standard versus Wave-FLAIR in each brain region. ( $r$ =Pearson's correlation coefficient,  $p$ = $p$  value)



**Supplementary Figure 2.** Scatter plots of lesion number of Standard versus Wave-FLAIR in each brain region. ( $r$ =Pearson's correlation coefficient,  $p$ = $p$  value)