

**Comparative effects of sodium glucose cotransporter 2 (SGLT2) inhibitors and dipeptidyl peptidase-4 (DPP4) inhibitors on new-onset atrial fibrillation and stroke outcomes**

Sharen Lee \*<sup>1</sup>, Jiandong Zhou MS \*<sup>2</sup>, Carlin Chang MPhil MRCP<sup>3</sup>, Tong Liu MD PhD<sup>4</sup>, Dong Chang MD PhD<sup>5</sup>, Wing Tak Wong PhD<sup>6</sup>, Keith SK Leung BSc<sup>7</sup>, Abraham KC Wai MBChB FRCEM FRCP<sup>7</sup>, Bernard Man Yung Cheung MBBChir PhD FRCP<sup>8</sup>, Gary Tse PhD FRCP FFPH #<sup>5</sup>, Qingpeng Zhang PhD #<sup>1</sup>

<sup>1</sup> Cardiovascular Analytics Group, Laboratory of Cardiovascular Physiology, Hong Kong, China

<sup>2</sup> School of Data Science, City University of Hong Kong, Hong Kong, China

<sup>3</sup> Division of Neurology, Department of Medicine, The Queen Mary Hospital, Hong Kong, China

<sup>4</sup> Tianjin Key Laboratory of Ionic-Molecular Function of Cardiovascular Disease, Department of Cardiology, Tianjin Institute of Cardiology, Second Hospital of Tianjin Medical University, Tianjin 300211, China

<sup>5</sup> Xiamen Cardiovascular Hospital, Xiamen University, Xiamen, China

<sup>6</sup> School of Life Sciences, State Key Laboratory of Agrobiotechnology (CUHK), The Chinese University of Hong Kong, Hong Kong, China

<sup>7</sup> Emergency Medicine Unit, The University of Hong Kong, Pokfulam, Hong Kong, China

<sup>8</sup> Division of Clinical Pharmacology and Therapeutics, Department of Medicine, The University of Hong Kong, Pokfulam, Hong Kong, China

\* Joint first authors

# Correspondence to:

*Prof. Qingpeng Zhang PhD*

School of Data Science, City University of Hong Kong,

Hong Kong SAR, China

Email: [qingpeng.zhang@cityu.edu.hk](mailto:qingpeng.zhang@cityu.edu.hk)

Tel: +852 34424727

*Prof. Gary Tse, PhD, FRCP, FFPH*

Tianjin Institute of Cardiology, The Second Hospital of Tianjin Medical University

Tianjin 300211, China

Email: [garytse86@gmail.com](mailto:garytse86@gmail.com)

## Abstract

**Background:** SGLT2I and DPP4I are medications prescribed for type 2 diabetes mellitus patients.

However, there are few population-based studies comparing their effects on incident atrial fibrillation or ischemic stroke.

**Methods:** This was a territory-wide cohort study of type 2 diabetes mellitus patients prescribed SGLT2I or DPP4I between January 1st, 2015 to December 31st, 2019 in Hong Kong. Patients with both DPP4I and SGLT2I use and patients with drug discontinuation were excluded. Patients with prior AF or stroke were excluded for the respective analysis. 1:2 propensity-score matching was conducted for demographics, past comorbidities and medications using nearest-neighbor matching method. Cox models were used to identify significant predictors for new onset heart failure (HF) or myocardial infarction (MI), cardiovascular and all-cause mortality.

**Results:** The AF-free cohort included 49108 patients (mean age: 66.48 years old [SD: 12.89], 55.32% males) and the stroke-free cohort included 49563 patients (27244 males [54.96%], mean baseline age: 66.7 years old [SD: 12.97, max: 104.6 years old]). After propensity score matching, SGLT2i use was associated with a lower risk of new onset AF (HR: 0.43[0.28, 0.66]), cardiovascular mortality (HR: 0.79[0.58, 1.09]) and all-cause mortality (HR: 0.69[0.60, 0.79]) in the AF-free cohort. It was also associated with a lower risk of new onset stroke (0.46[0.33, 0.64]), cardiovascular mortality (HR: 0.74[0.55, 1.00]) and all-cause mortality (HR: 0.64[0.56, 0.74]) in the stroke-free cohort.

**Conclusions:** The novelty of our work is that SGLT2 inhibitors are protective against atrial fibrillation and stroke development for the first time. These findings should be validated in other cohorts.

## **Introduction**

Type 2 diabetes mellitus is an increasingly prevalent metabolic disease with significant cerebrovascular and cardiovascular complications, including stroke, heart failure (HF) and myocardial infarction. (1) Diabetic patients are associated with a 2.5 times increased risk of ischemic stroke, and the risk is glycemic level-dependent. (2, 3) Atrial fibrillation (AF) is a known risk factor for ischemic stroke, and diabetes mellitus increases the risk of AF through a combination of structural and electrical cardiac remodeling. (4-6) Given the susceptibility of diabetic patients towards cerebrovascular complications, increasing research on the potential cerebrovascular-protective effects of novel anti-diabetic agents has been performed.

Recent studies have shown the superiority of sodium glucose cotransporter-2 inhibitor (SGLT2I) in its ability to lower all-cause and cardiovascular mortality amongst diabetic patients. (7-9) Similarly, dipeptidyl peptidase-4 inhibitor (DPP4I) users have been reported to lower the risk of major cardiovascular adverse events, including stroke, though its effect on heart failure remains controversial. (10-12) However, few studies have compared SGLT2I and DPP4I in their effects on stroke and atrial fibrillation. A recent multinational study comparing the cardiovascular outcomes between new SGLT2I and DPP4I users reported lower stroke risk amongst SGLT2I users. (8)

However, Hong Kong was not included in its Asia-Pacific data analysis, and the risks of atrial fibrillation have not been examined.

Therefore, to elucidate the cerebrovascular effects of SGLT2I and DPP4I, the present study aims to evaluate the risk of ischemic stroke and atrial fibrillation between SGLT2I and DPP4I users in the Hong Kong population.

## **Methods**

### *Study design and population*

This was a retrospective, territory-wide cohort study of type-2 diabetes mellitus patients (n=69521) with SGLT2I/DPP4I use between January 1<sup>st</sup>, 2015 and December 31<sup>st</sup>, 2019 in Hong Kong (**Figure 1**). Patients with both DPP4I and SGLT2I use (n=13215) and patients with drug discontinuation (N=2061) were excluded. Patients with prior AF (n=5137) were excluded from the cohort and a total of 49108 persons fulfilled the eligibility criteria and were included in the AF study cohort for final analysis. Patients with prior stroke (n=4682) were excluded from the cohort and a total of 49563 persons fulfilled the eligibility criteria and were included in the AF study cohort for final analysis. The patients were identified from the Clinical Data Analysis and Reporting System (CDARS), a territory-wide database that centralizes patient information from individual local hospitals to establish comprehensive medical data, including clinical characteristics, disease diagnosis, laboratory results, and drug treatment details. The system has been previously used by both our team and other teams in Hong Kong. (13, 14)

Clinical and biochemical data were extracted for the present study. Patients' demographics include sex and age of initial drug use (baseline). Prior comorbidities before initial drug use were extracted, including cardiovascular, respiratory, renal diseases, endocrine diseases, hypertension, gastrointestinal diseases, HF, ischemic heart disease (IHD), dementia, chronic obstructive pulmonary disease (COPD), stroke and cancer. Charlson comorbidity index was also calculated. Mortality was recorded using the International Classification of Diseases Tenth Edition (ICD-10) coding, whilst the secondary outcomes and comorbidities were documented in CDARS under ICD-9 codes. **Supplementary Table 1** displays the ICD codes used to search for patient outcomes and comorbidities.

Medications histories were also extracted, including gliclazide, glimepiride, metformin, sulphonylurea, insulin, thiazolidinedione, meglitinide, glucagon-like peptide-1 agonist, acarbose, diuretics for hypertension, diuretics for HF, anticoagulants, antiplatelets and lipid-lowering drugs. Baseline laboratory data, defined as complete blood count tests, biochemical tests, and diabetes mellitus tests were extracted. Complete blood count tests include mean corpuscular volume (MCV), basophil, eosinophil, lymphocyte, blast, monocyte, neutrophil, white blood cells, mean corpuscular hemoglobin (MCH), myelocyte, platelet, reticulocyte, red blood cells, and hematocrit (HCT). Biochemical tests include potassium, urate, albumin, sodium, urea, protein, creatinine, alkaline phosphatase (ALP), aspartate transaminase, serum alanine aminotransferase (ALT), and bilirubin. Glycemic and lipid profiles include triglyceride, total cholesterol, low-density lipoprotein (LDL), high-density lipoprotein (HDL), fasting blood glucose, and HbA1c.

### *Outcomes and statistical analysis*

The primary outcome was new onset ischemic stroke/ transient ischemic attack and AF, and secondary outcomes are all-cause and cardiovascular mortality. Mortality data were obtained from the Hong Kong Death Registry, a population-based official government registry with the registered death records of all Hong Kong citizens linked to CDARS. ICD-10 codes I00-I09, I11, I13, I20-I51 were used to identify cardiovascular mortality. Descriptive statistics are used to summarize baseline clinical and biochemical characteristics of patients with SGLT2I and DPP4I use. For baseline clinical characteristics, the continuous variables were presented as median (95% confidence interval [CI]/ interquartile range [IQR]) or mean (standard deviation [SD]) and the categorical variables were presented as total number (percentage). Continuous variables were compared using the two-tailed Mann-Whitney U test, whilst the two-tailed chi-square test with Yates' correction was used to test 2×2 contingency data. Univariate Cox regression was used to identify significant predictors for primary and secondary outcomes. Propensity-score matching was performed to generate control for SGLT2I users to compare against DPP4I users in a 1:2 ratio based on age, sex, prior comorbidities, Charlson comorbidity index, medications using nearest-neighbor matching. A standardized mean difference (SMD) of no less than 0.2 between the treatment groups post-weighting was considered negligible. The hazard ratio (HR), 95% CI and P-value were reported. Statistical significance is defined as P-value < 0.05. The statistical analysis was performed with RStudio software (Version: 1.1.456) and Python (Version: 3.6).

### **Results**

### *Basic characteristics of the atrial fibrillation cohort*

The AF cohort included 49108 patients (mean age: 66.48 years old [SD: 12.89], 55.32% males). In total, 5610 patients (11.42%) met all-cause mortality outcome after a mean follow up of 519.4 days (SD: 419.82, max: 1748.0), 729(1.48%) passed away due to cardiovascular diseases after a mean follow up of 519.39 days (SD: 419.82, max: 1748.0), and 842 patients (1.71%) developed new AF after a mean follow up of 514.02 days (SD: 418.46, max: 1748.0).

As shown in **Supplementary Table 2**, patients with new onset AF presentation had older baseline age (mean [ $\pm$ SD]: 77.5 $\pm$ 10.0; max: 99.7 years old v.s. mean [ $\pm$ SD]:66.3 $\pm$ 12.8; max: 104.5 years old, SMD=0.97), and fewer were under 50 years old (0.83% v.s. 9.56%, SMD=0.4), within [50-60] years old (5.46% v.s. 21.73%, SMD=0.49) and [60-70] years old (15.32% v.s. 30.98%, SMD=0.38). More of those with new onset AF were within [70-80] years old (32.06% v.s. 21.53%, SMD=0.24) and older than 80 (46.31% v.s. 16.17%, SMD=0.69). Past comorbidities of cardiovascular diseases (100.00% v.s. 22.50%, SMD=2.62), respiratory diseases (59.26% v.s. 24.12%, SMD=0.76), renal diseases (50.83% v.s. 22.69%, SMD=0.61), hypertension (76.36% v.s. 52.78%, SMD=0.51), gastrointestinal diseases (47.26% v.s. 26.37%, SMD=0.44), and stroke (43.70% v.s. 17.06%, SMD=0.61) were found to be more prevalent in those with new onset AF, and they had a larger Charlson score (mean [ $\pm$ SD]: 3.9 $\pm$ 1.7; max: 14.0 v.s. mean [ $\pm$ SD]:2.5 $\pm$ 1.7; max: 16.0, SMD=0.82). Patients with new onset AF were more frequently prescribed with DPP4I (97.26% v.s. 74.09%, SMD=0.7; SGLT2I as reference) and antiplatelets (6.55% v.s. 1.06%, SMD=0.29), but were less frequently prescribed lipid-lowering drugs (1.54% v.s. 14.91%, SMD=0.5).

Patients with new onset AF were found to have lower levels of lymphocyte (mean [ $\pm$ SD]:  $1.8 \pm 0.7$ ; max:  $7.5 \times 10^9/L$  v.s. mean [ $\pm$ SD]:  $2.0 \pm 1.0$ ; max:  $45.4 \times 10^9/L$ , SMD=0.25), platelet (mean [ $\pm$ SD]:  $217.9 \pm 67.7$ ; max:  $555.0 \times 10^9/L$  v.s. mean [ $\pm$ SD]:  $239.8 \pm 72.9$ ; max:  $999.0 \times 10^9/L$ , SMD=0.31), red blood cells (mean [ $\pm$ SD]:  $4.3 \pm 0.7$ ; max:  $7.1 \times 10^{12}/L$  v.s. mean [ $\pm$ SD]:  $4.5 \pm 0.7$ ; max:  $9.2 \times 10^{12}/L$ , SMD=0.24), urate (mean [ $\pm$ SD]:  $0.37 \pm 0.1$ ; max:  $1.0$  mmol/L v.s. mean [ $\pm$ SD]:  $0.42 \pm 0.1$ ; max:  $1.3$  mmol/L, SMD=0.33), albumin (mean [ $\pm$ SD]:  $39.9 \pm 4.1$ ; max:  $51.0$  g/L v.s. mean [ $\pm$ SD]:  $41.5 \pm 4.1$ ; max:  $55.1$  g/L, SMD=0.39), ALT (mean [ $\pm$ SD]:  $22.4 \pm 21.3$ ; max:  $350.0$  U/L v.s. mean [ $\pm$ SD]:  $28.1 \pm 25.1$ ; max:  $738.0$  U/L, SMD=0.24), and LDL (mean [ $\pm$ SD]:  $2.2 \pm 0.8$ ; max:  $7.1$  mmol/L v.s. mean [ $\pm$ SD]:  $2.4 \pm 0.8$ ; max:  $17.8$  mmol/L, SMD=0.24). However, they had higher levels of HCT (mean [ $\pm$ SD]:  $0.41 \pm 0.1$ ; max:  $0.5$  L/L v.s. mean [ $\pm$ SD]:  $0.38 \pm 0.1$ ; max:  $0.6$  L/L, SMD=0.3), urea (mean [ $\pm$ SD]:  $8.5 \pm 4.6$ ; max:  $48.5$  mmol/L v.s. mean [ $\pm$ SD]:  $6.8 \pm 3.8$ ; max:  $61.1$  mmol/L, SMD=0.4), and creatinine (mean [ $\pm$ SD]:  $126.7 \pm 103.8$ ; max:  $1276.0$  umol/L v.s. mean [ $\pm$ SD]:  $100.3 \pm 88.1$ ; max:  $1776.0$  umol/L, SMD=0.27).

A propensity score matching approach was used to generate an AF control cohort of SGLT2I drug users and DPP4I users with a 1:2 ratio based on demographics, past comorbidities and medications (**Table 1**). After matching, there were more new onset AF patients who were prescribed with diuretics for hypertension (5.13% v.s. 0.00%, SMD=0.33), and diuretics for HF (5.38% v.s. 0.02%, SMD=0.33), but less were prescribed with lipid-lowering drugs (57.56% v.s. 0.23%, SMD=1.63). Those with new onset AF diseases had lower levels of myelocyte (mean [ $\pm$ SD]:  $0.29 \pm 0.3$ ; max:  $1.33 \times 10^9/L$  v.s. mean [ $\pm$ SD]:  $1.08 \pm 5.12$ ; max:  $36.1 \times 10^9/L$ , SMD=0.22), reticulocyte (mean [ $\pm$ SD]:  $59.24 \pm 23.6$ ; max:  $111.0 \times 10^9/L$  v.s. mean [ $\pm$ SD]:  $69.42 \pm 29.78$ ; max:



175.0  $\times 10^9/L$ , SMD=0.38), urate (mean [ $\pm$ SD]: 0.37 $\pm$ 0.1; max: 0.91 mmol/L v.s. mean [ $\pm$ SD]:0.41 $\pm$ 0.11; max: 0.97 mmol/L, SMD=0.31), creatinine (mean [ $\pm$ SD]: 77.36 $\pm$ 21.55; max: 757.0  $\mu$ mol/L v.s. mean [ $\pm$ SD]:91.32 $\pm$ 57.29; max: 1294.0  $\mu$ mol/L, SMD=0.32) and urea (mean [ $\pm$ SD]: 5.58 $\pm$ 1.77; max: 44.6 mmol/L v.s. mean [ $\pm$ SD]:6.36 $\pm$ 2.97; max: 43.21 mmol/L, SMD=0.32). However, they had higher levels of red blood cells (mean [ $\pm$ SD]: 4.77 $\pm$ 0.59; max: 9.18  $\times 10^{12}/L$  v.s. mean [ $\pm$ SD]:4.61 $\pm$ 0.64; max: 7.86  $\times 10^{12}/L$ , SMD=0.26), HCT (mean [ $\pm$ SD]: 0.41 $\pm$ 0.04; max: 0.61 L/L v.s. mean [ $\pm$ SD]:0.4 $\pm$ 0.05; max: 0.57 L/L, SMD=0.31), and ALT (mean [ $\pm$ SD]: 34.09 $\pm$ 30.81; max: 738.0 U/L v.s. mean [ $\pm$ SD]:28.14 $\pm$ 23.77; max: 605.0 U/L, SMD=0.22).

#### *Basic characteristics of stroke cohort*

The stroke cohort included 49563 patients (27244 males [54.96%], mean baseline age: 66.7 years old [SD: 12.97, max: 104.6 years old]). Overall 5976 patients (12.05%) passed after a mean follow up of 518.1 days (SD: 418.94, max: 1748 days), 842 patients (1.69%) passed away from cardiovascular diseases after a mean follow up of 518.1 days (SD: 418.9, max: 1748 days), and 1216 patients (2.45%) developed new onset stroke after mean follow up of 512.1 days (SD: 417.2, max: 1748 days).

As shown in **Supplementary Table 3**, patients with new onset stroke had older baseline age (mean [ $\pm$ SD]: 74.2 $\pm$ 10.6; max: 102.3 years old v.s. mean [ $\pm$ SD]:66.6 $\pm$ 13.0; max: 104.5 years old, SMD=0.65): less under 50 years old (1.80% v.s. 9.45%, SMD=0.34), within [50-60] years old (8.22% v.s. 21.37%, SMD=0.38) but more within [70-80] years old (33.05% v.s. 21.65%, SMD=0.26) and

over 80 years old (33.14% v.s. 17.09%, SMD=0.38). More new onset stroke patients had prior comorbidities of cardiovascular diseases (37.82% v.s. 26.13%, SMD=0.25), respiratory diseases (37.99% v.s. 25.34%, SMD=0.27), renal diseases (37.41% v.s. 23.59%, SMD=0.3), hypertension (85.03% v.s. 52.41%, SMD=0.75), gastrointestinal diseases (38.81% v.s. 27.02%, SMD=0.25) and had a larger Charlson score (mean [ $\pm$ SD]: 3.4 $\pm$ 1.6; max: 14.0 v.s. mean [ $\pm$ SD]:2.5 $\pm$ 1.8; max: 15.0, SMD=0.48).

DPP4I (96.79% v.s. 74.26%, SMD=0.68), gliclazide (78.78% v.s. 67.47%, SMD=0.26) and antiplatelets (6.25% v.s. 1.48%, SMD=0.25) were more frequently prescribed for those with new onset stroke, whilst less commonly prescribed with lipid-lowering drugs (2.54% v.s. 14.71%, SMD=0.44). In addition, patients with new onset stroke were found to have lower levels of red blood cells (mean [ $\pm$ SD]: 4.3 $\pm$ 0.7; max: 6.6  $\times 10^{12}$ /L v.s. mean [ $\pm$ SD]:4.4 $\pm$ 0.7; max: 9.2  $\times 10^{12}$ /L, SMD=0.25) and albumin (mean [ $\pm$ SD]: 40.5 $\pm$ 4.2; max: 53.1 g/L v.s. mean [ $\pm$ SD]:41.5 $\pm$ 4.2; max: 55.1 g/L, SMD=0.22), but have higher HCT (mean [ $\pm$ SD]: 0.41 $\pm$ 0.1; max: 0.5 L/L v.s. mean [ $\pm$ SD]:0.4 $\pm$ 0.1; max: 0.6 L/L, SMD=0.28).

A propensity score matching approach was used to generate a stroke control cohort of SGLT2I drug users and DPP4I users with 1:2 ratio based on demographics, past comorbidities and medications (**Table 2**). After matching, there were more new stroke patients who were prescribed with diuretics for hypertension (5.04% v.s. 0.00%, SMD=0.33), diuretics for HF (5.92% v.s. 0.01%, SMD=0.35), anticoagulants (6.63% v.s. 0.08%, SMD=0.37), antiplatelets (24.80% v.s. 0.62%, SMD=0.78) and lipid-lowering drugs (57.19% v.s. 0.22%, SMD=1.62).

Those with new onset stroke presentation had lower levels of reticulocyte (mean [ $\pm$ SD]: 60.81 $\pm$ 23.54; max: 111.0 x10<sup>9</sup>/L v.s. mean [ $\pm$ SD]:69.34 $\pm$ 29.19; max: 168.0 x10<sup>9</sup>/L, SMD=0.32), urate (mean [ $\pm$ SD]: 0.37 $\pm$ 0.1; max: 0.91 mmol/L v.s. mean [ $\pm$ SD]:0.41 $\pm$ 0.12; max: 0.97 mmol/L, SMD=0.31), urea (mean [ $\pm$ SD]: 5.59 $\pm$ 1.78; max: 44.6 mmol/L v.s. mean [ $\pm$ SD]:6.36 $\pm$ 2.98; max: 43.21 mmol/L, SMD=0.31), creatinine (mean [ $\pm$ SD]: 77.49 $\pm$ 21.66; max: 757.0 umol/L v.s. mean [ $\pm$ SD]:91.38 $\pm$ 57.16; max: 1294.0 umol/L, SMD=0.32), in addition to higher levels of red blood cells (mean [ $\pm$ SD]: 4.77 $\pm$ 0.59; max: 9.18 x10<sup>12</sup>/L v.s. mean [ $\pm$ SD]:4.61 $\pm$ 0.65; max: 7.86 x10<sup>12</sup>/L, SMD=0.26), HCT (mean [ $\pm$ SD]: 0.41 $\pm$ 0.04; max: 0.61 L/L v.s. mean [ $\pm$ SD]:0.4 $\pm$ 0.05; max: 0.59 L/L, SMD=0.33) and ALT (mean [ $\pm$ SD]: 34.04 $\pm$ 30.18; max: 738.0 L/L v.s. mean [ $\pm$ SD]:28.03 $\pm$ 23.85; max: 605.0 L/L, SMD=0.22).

## Discussion

There are several major findings for the present study: 1) SGLT2I users have a lower risk for new-onset stroke and AF in comparison to DPP4I users; 2) SGLT2I users have a lower risk for all-cause mortality, cardiovascular mortality, new-onset stroke and AF; 3) DPP4I use increases the risk of all-cause mortality, cardiovascular mortality, new-onset stroke and AF.

To our knowledge, this is the first study with a head-to-head comparison of new-onset stroke and AF risk between SGLT2I and DPP4I users. Whilst the superior effects of SGLT2I against DPP4I in the lower of all-cause and cardiovascular mortality have been reported, few studies have compared

the effects of the two drug classes in their effects on stroke and AF specifically.(7) An existing meta-analysis, which compared the stroke risk amongst SGLT2I and DPP4I users indirectly, reported that the effect of both drug classes was neutral. (15) However, the meta-analysis had a smaller sample size, and confounders were not adjusted for. Recently, a multinational observational study involving 13 countries demonstrated significantly lower all-cause mortality and stroke risk in SGLT2I users in comparison to DPP4I users, which is supportive of the present findings. (8)

On the other hand, the effect of SGLT2I on AF is more controversial. The risk of AF was numerically lower in all, and statistically lower in some clinical trials comparing SGLT2I users and controls. (16-19) A recent meta-analysis of 16 randomized controlled trials demonstrated a significant reduction of AF and atrial flutter amongst SGLT2I and placebo users. (20) Although findings from the Cardiovascular mortality and morbidity in patients with type 2 diabetes following initiation of sodium-glucose co-transporter-2 inhibitors versus other glucose-lowering drugs (CVD-REAL Nordic) study demonstrated an insignificant difference in stroke and atrial fibrillation between dapagliflozin and DPP4I users, their analysis did not adjust for clinical or biochemical confounders, nor a history of the two diseases respectively. (21) Animal studies have also demonstrated that SGLT2I can prevent atrial remodeling, which is an important pathogenic mechanism of AF. (22) Thus, the findings from the present study, which is based on more stringent patient selection and confounder adjustments, and better supported by the large-scale trials on SGLT2I are likely a better reflection of the clinical circumstances.

Existing reports on the cardiovascular effects of DPP4I remains controversial. Insignificant differences in cardiovascular mortality, myocardial infarction and ischemic stroke between DPP4I

users and controls were reported by both the Cardiovascular Outcomes Study of Alogliptin in Patients With Type 2 Diabetes and Acute Coronary Syndrome (EXAMINE) and the Saxagliptin Assessment of Vascular Outcomes Recorded in Patients With Diabetes Mellitus–Thrombolysis in Myocardial Infarction 53 (SAVOR-TIMI53) trials. (23, 24) Hospitalization for acute HF increased in the SAVOR-TIMI53 trial, though the results were not replicated by other trials. (23-25) An insignificant elevation in risk of HF-related hospitalization was reported in a meta-analysis summarizing these clinical trials, with substantial heterogeneity across trials using different DPP4Is, suggesting unique features of specific DPP4I may have individual cardiovascular effects. (26)

### *Limitations*

Several limitations should be noted for the present study. First of all, given its observational nature, there is inherent information bias due to under-coding, coding errors and missing data. Secondly, residual confounding may be present despite robust propensity-matching, particularly with the unavailability of information on lifestyle cardiovascular risk factors. Patients' drug exposure duration has not been controlled, which may affect their risk against the study outcomes. Additionally, the occurrence of AF out of the hospital is not accounted for, though non-sustained AF that does not result in hospital admission can be considered as subclinical.

### **Conclusions**

## Conflicts of Interest

None.

## References

1. van Sloten TT, Sedaghat S, Carnethon MR, Launer LJ, Stehouwer CDA. Cerebral microvascular complications of type 2 diabetes: stroke, cognitive dysfunction, and depression. *Lancet Diabetes Endocrinol.* 2020;8(4):325-36.
2. Emerging Risk Factors C, Sarwar N, Gao P, Seshasai SR, Gobin R, Kaptoge S, et al. Diabetes mellitus, fasting blood glucose concentration, and risk of vascular disease: a collaborative meta-analysis of 102 prospective studies. *Lancet.* 2010;375(9733):2215-22.
3. Crane PK, Walker R, Hubbard RA, Li G, Nathan DM, Zheng H, et al. Glucose levels and risk of dementia. *N Engl J Med.* 2013;369(6):540-8.
4. Wang A, Green JB, Halperin JL, Piccini JP, Sr. Atrial Fibrillation and Diabetes Mellitus: JACC Review Topic of the Week. *J Am Coll Cardiol.* 2019;74(8):1107-15.
5. Xiong Z, Liu T, Tse G, Gong M, Gladding PA, Smaill BH, et al. A Machine Learning Aided Systematic Review and Meta-Analysis of the Relative Risk of Atrial Fibrillation in Patients With Diabetes Mellitus. *Front Physiol.* 2018;9:835.
6. Korantzopoulos P, Letsas KP, Tse G, Fragakis N, Goudis CA, Liu T. Inflammation and atrial fibrillation: A comprehensive review. *J Arrhythm.* 2018;34(4):394-401.

7. Zheng SL, Roddick AJ, Aghar-Jaffar R, Shun-Shin MJ, Francis D, Oliver N, et al.

Association Between Use of Sodium-Glucose Cotransporter 2 Inhibitors, Glucagon-like

Peptide 1 Agonists, and Dipeptidyl Peptidase 4 Inhibitors With All-Cause Mortality in

Patients With Type 2 Diabetes: A Systematic Review and Meta-analysis. *JAMA*.

2018;319(15):1580-91.

8. Kohsaka S, Lam CSP, Kim DJ, Cavender MA, Norhammar A, Jorgensen ME, et al. Risk

of cardiovascular events and death associated with initiation of SGLT2 inhibitors compared

with DPP-4 inhibitors: an analysis from the CVD-REAL 2 multinational cohort study. *Lancet*

*Diabetes Endocrinol*. 2020;8(7):606-15.

9. Zelniker TA, Wiviott SD, Raz I, Im K, Goodrich EL, Furtado RHM, et al. Comparison of

the Effects of Glucagon-Like Peptide Receptor Agonists and Sodium-Glucose Cotransporter

2 Inhibitors for Prevention of Major Adverse Cardiovascular and Renal Outcomes in Type 2

Diabetes Mellitus. *Circulation*. 2019;139(17):2022-31.

10. Huang TL, Hsiao FY, Chiang CK, Shen LJ, Huang CF. Risk of cardiovascular events

associated with dipeptidyl peptidase-4 inhibitors in patients with diabetes with and without

chronic kidney disease: A nationwide cohort study. *PLoS One*. 2019;14(5):e0215248.

11. Paterno E, Goldfine AB, Schneeweiss S, Everett BM, Glynn RJ, Liu J, et al.

Cardiovascular outcomes associated with canagliflozin versus other non-gliflozin

antidiabetic drugs: population based cohort study. *BMJ*. 2018;360:k119.

12. Kim KJ, Choi J, Lee J, Bae JH, An JH, Kim HY, et al. Dipeptidyl peptidase-4 inhibitor compared with sulfonylurea in combination with metformin: cardiovascular and renal outcomes in a propensity-matched cohort study. *Cardiovasc Diabetol*. 2019;18(1):28.
13. Lee S, Liu T, Zhou J, Zhang Q, Wong WT, Tse G. Predictions of diabetes complications and mortality using hba1c variability: a 10-year observational cohort study. *Acta Diabetol*. 2020.
14. Liu YZ, Chu R, Lee A, Gomersall CD, Zhang L, Gin T, et al. A surveillance method to identify patients with sepsis from electronic health records in Hong Kong: a single centre retrospective study. *BMC Infect Dis*. 2020;20(1):652.
15. Sinha B, Ghosal S. Meta-analyses of the effects of DPP-4 inhibitors, SGLT2 inhibitors and GLP1 receptor analogues on cardiovascular death, myocardial infarction, stroke and hospitalization for heart failure. *Diabetes Res Clin Pract*. 2019;150:8-16.
16. Zinman B, Wanner C, Lachin JM, Fitchett D, Bluhmki E, Hantel S, et al. Empagliflozin, Cardiovascular Outcomes, and Mortality in Type 2 Diabetes. *N Engl J Med*. 2015;373(22):2117-28.
17. Baglioni P. Canagliflozin and Cardiovascular and Renal Events in Type 2 Diabetes. *N Engl J Med*. 2017;377(21):2097-8.
18. Zelniker TA, Bonaca MP, Furtado RHM, Mosenzon O, Kuder JF, Murphy SA, et al. Effect of Dapagliflozin on Atrial Fibrillation in Patients With Type 2 Diabetes Mellitus: Insights From the DECLARE-TIMI 58 Trial. *Circulation*. 2020;141(15):1227-34.



19. Okunrintemi V, Mishriky BM, Powell JR, Cummings DM. Sodium-glucose co-transporter-2 inhibitors and atrial fibrillation in the cardiovascular and renal outcome trials. *Diabetes Obes Metab.* 2020.
20. Li WJ, Chen XQ, Xu LL, Li YQ, Luo BH. SGLT2 inhibitors and atrial fibrillation in type 2 diabetes: a systematic review with meta-analysis of 16 randomized controlled trials. *Cardiovasc Diabetol.* 2020;19(1):130.
21. Persson F, Nystrom T, Jorgensen ME, Carstensen B, Gulseth HL, Thuresson M, et al. Dapagliflozin is associated with lower risk of cardiovascular events and all-cause mortality in people with type 2 diabetes (CVD-REAL Nordic) when compared with dipeptidyl peptidase-4 inhibitor therapy: A multinational observational study. *Diabetes Obes Metab.* 2018;20(2):344-51.
22. Shao Q, Meng L, Lee S, Tse G, Gong M, Zhang Z, et al. Empagliflozin, a sodium glucose co-transporter-2 inhibitor, alleviates atrial remodeling and improves mitochondrial function in high-fat diet/streptozotocin-induced diabetic rats. *Cardiovasc Diabetol.* 2019;18(1):165.
23. White WB, Cannon CP, Heller SR, Nissen SE, Bergenstal RM, Bakris GL, et al. Alogliptin after acute coronary syndrome in patients with type 2 diabetes. *N Engl J Med.* 2013;369(14):1327-35.
24. Scirica BM, Bhatt DL, Braunwald E, Steg PG, Davidson J, Hirshberg B, et al. Saxagliptin and cardiovascular outcomes in patients with type 2 diabetes mellitus. *N Engl J Med.* 2013;369(14):1317-26.

25. Green JB, Bethel MA, Armstrong PW, Buse JB, Engel SS, Garg J, et al. Effect of Sitagliptin on Cardiovascular Outcomes in Type 2 Diabetes. *N Engl J Med*. 2015;373(3):232-42.

26. McGuire DK, Van de Werf F, Armstrong PW, Standl E, Koglin J, Green JB, et al. Association Between Sitagliptin Use and Heart Failure Hospitalization and Related Outcomes in Type 2 Diabetes Mellitus: Secondary Analysis of a Randomized Clinical Trial. *JAMA Cardiol*. 2016;1(2):126-35.

**Table 1. Baseline characteristics of patients with DPP4I or SGLT2I use before and after propensity score matching (1:2) in the AF cohort.**

\* for SMD $\geq$ 0.2

Characteristics	Before matching			After 1:2 matching		
	SGLT2I (N=12526) Mean(SD);Max;N or Count(%)	DPP4I (N=36582) Mean(SD);Max;N or Count(%)	SMD	SGLT2I (N=12526) Mean(SD);Max;N or Count(%)	DPP4I (N=25052) Mean(SD);Max;N or Count(%)	SMD
Male gender	7828(62.49%)	19343(52.87%)	0.2	7828(62.49%)	15644(62.44%)	<0.01
Baseline age, year	60.0(11.41);95.61;n=12526	68.7(12.61);104.55;n=36582	0.72*	60.0(11.41);95.61;n=12526	60.99(11.09);96.24;n=25052	0.09
<50	2193(17.50%)	2430(6.64%)	0.34*	2193(17.50%)	3780(15.08%)	0.07
[50-60]	3766(30.06%)	6772(18.51%)	0.27*	3766(30.06%)	7577(30.24%)	<0.01
[60-70]	4342(34.66%)	10744(29.36%)	0.11	4342(34.66%)	8683(34.65%)	<0.01
[70-80]	1795(14.33%)	8869(24.24%)	0.25*	1795(14.33%)	3945(15.74%)	0.04
>80	430(3.43%)	7767(21.23%)	0.56*	430(3.43%)	1067(4.25%)	0.04
Cardiovascular	2439(19.47%)	9266(25.32%)	0.14	2439(19.47%)	4801(19.16%)	0.01
Respiratory	2276(18.17%)	9867(26.97%)	0.21*	2276(18.17%)	4419(17.63%)	0.01
Renal	968(7.72%)	10414(28.46%)	0.56*	968(7.72%)	1894(7.56%)	0.01
Endocrine	177(1.41%)	840(2.29%)	0.07	177(1.41%)	354(1.41%)	<0.01
Hypertension	3800(30.33%)	22319(61.01%)	0.65*	3800(30.33%)	7790(31.09%)	0.02
Gastrointestinal	1913(15.27%)	11213(30.65%)	0.37*	1913(15.27%)	3887(15.51%)	0.01
HF	141(1.12%)	547(1.49%)	0.03	141(1.12%)	280(1.11%)	<0.01
IHD	1593(12.71%)	3297(9.01%)	0.12	1593(12.71%)	3060(12.21%)	0.02
Dementia	7(0.05%)	543(1.48%)	0.16	7(0.05%)	14(0.05%)	<0.01
COPD	2(0.01%)	8(0.02%)	<0.01	2(0.01%)	4(0.01%)	<0.01
Cancer	197(1.57%)	1222(3.34%)	0.11	197(1.57%)	392(1.56%)	<0.01

Charlson score	1.73(1.22);12.0;n=12526	2.83(1.8);16.0;n=36582	0.71*	1.73(1.22);12.0;n=12526	1.78(1.22);12.0;n=25052	0.05
Gliclazide	6717(53.62%)	26590(72.68%)	0.40*	6717(53.62%)	13848(55.27%)	0.03
Glimepiride	1570(12.53%)	4768(13.03%)	0.01	1570(12.53%)	3038(12.12%)	0.01
Metformin	8068(64.41%)	26099(71.34%)	0.15	8068(64.41%)	16388(65.41%)	0.02
Sulphonylurea	1205(9.61%)	3652(9.98%)	0.01	1205(9.61%)	2339(9.33%)	0.01
Insulin	3759(30.00%)	7098(19.40%)	0.25*	3759(30.00%)	7182(28.66%)	0.03
Thiozolidinedone	571(4.55%)	289(0.79%)	0.24*	571(4.55%)	1074(4.28%)	0.01
Meglitinide	1128(9.00%)	3243(8.86%)	<0.01	1128(9.00%)	2195(8.76%)	0.01
Glucagon-like peptide-1 agonist	183(1.46%)	10(0.02%)	0.17	183(1.46%)	338(1.34%)	0.01
Acarbose	102(0.81%)	287(0.78%)	<0.01	102(0.81%)	204(0.81%)	<0.01
Diuretics for hypertension	643(5.13%)	0(0.00%)	0.33*	643(5.13%)	0(0.00%)	0.33*
Diuretics for HF	674(5.38%)	1(0.00%)	0.34*	674(5.38%)	6(0.02%)	0.33*
Lipid-lowering drugs	7210(57.56%)	4(0.01%)	1.65*	7210(57.56%)	59(0.23%)	1.63*
Anticoagulants	741(5.91%)	2(0.00%)	0.35*	741(5.91%)	26(0.10%)	0.35*
Antiplatelets	3215(25.66%)	2(0.00%)	0.83*	3215(25.66%)	158(0.63%)	0.80*
Mean corpuscular volume, fL	86.92(7.25);134.3;n=6402	87.47(7.75);135.4;n=17277	0.07	86.92(7.25);134.3;n=6402	86.74(7.51);119.9;n=11278	0.02
Basophil, x10 <sup>9</sup> /L	0.04(0.04);0.3;n=4099	0.04(0.07);7.22;n=12990	0.02	0.04(0.04);0.3;n=4099	0.04(0.09);7.22;n=8394	0.02
Eosinophil, x10 <sup>9</sup> /L	0.22(0.2);3.7;n=5106	0.23(0.3);16.3;n=14117	0.03	0.22(0.2);3.7;n=5106	0.23(0.28);16.3;n=9126	0.02

Lymphocyte, x10 <sup>9</sup> /L	2.19(1.01);34.8;n=5107	1.9(0.99);45.35;n=14138	0.28*	2.19(1.01);34.8;n=5107	2.08(1.01);45.35;n=9130	0.10
Monocyte, x10 <sup>9</sup> /L	0.53(0.23);3.6;n=5107	0.52(0.26);5.93;n=14138	0.01	0.53(0.23);3.6;n=5107	0.5(0.22);4.14;n=9130	0.10
Neutrophil, x10 <sup>9</sup> /L	5.01(2.29);26.6;n=5107	5.38(2.92);72.2;n=14138	0.14	5.01(2.29);26.6;n=5107	5.06(2.54);72.2;n=9130	0.02
White blood cells, x10 <sup>9</sup> /L	7.93(2.58);44.5;n=6409	7.97(3.22);180.4;n=17277	0.01	7.93(2.58);44.5;n=6409	7.88(3.67);180.4;n=11279	0.02
Mean cell haemoglobin, pg	29.22(2.89);43.8;n=6402	29.35(3.05);46.1;n=17277	0.04	29.22(2.89);43.8;n=6402	29.18(2.97);41.1;n=11278	0.01
Myelocyte, x10 <sup>9</sup> /L	0.29(0.3);1.33;n=19	0.8(3.68);36.1;n=97	0.2	0.29(0.3);1.33;n=19	1.08(5.12);36.1;n=49	0.22*
Platelet, x10 <sup>9</sup> /L	243.81(67.65);783.0;n=6409	237.65(74.65);999.0;n=17278	0.09	243.81(67.65);783.0;n=6409	244.17(72.89);728.0;n=11276	0.01
Reticulocyte, x10 <sup>9</sup> /L	59.24(23.6);111.0;n=38	65.81(85.33);1735.06;n=458	0.1	59.24(23.6);111.0;n=38	69.42(29.78);175.0;n=204	0.38*
Red blood cells, x10 <sup>12</sup> /L	4.77(0.59);9.18;n=6402	4.34(0.71);8.04;n=17277	0.67*	4.77(0.59);9.18;n=6402	4.61(0.64);7.86;n=11278	0.26*
Hematocrit, L/L	0.41(0.04);0.61;n=5431	0.38(0.05);0.6;n=14268	0.72*	0.41(0.04);0.61;n=5431	0.4(0.05);0.57;n=9049	0.31*
Potassium, mmol/L	4.27(0.43);7.6;n=9738	4.36(0.5);8.53;n=30157	0.2	4.27(0.43);7.6;n=9738	4.33(0.45);7.61;n=18516	0.13
Urate, mmol/L	0.37(0.1);0.91;n=1803	0.42(0.12);1.27;n=4089	0.4*	0.37(0.1);0.91;n=1803	0.41(0.11);0.97;n=2653	0.31*
Albumin, g/L	42.8(3.28);55.1;n=8170	41.0(4.32);53.6;n=21500	0.47*	42.8(3.28);55.1;n=8170	42.14(3.73);53.0;n=14311	0.19
Sodium, mmol/L	139.48(2.7);170.0;n=9740	139.27(3.05);161.0;n=30173	0.07	139.48(2.7);170.0;n=9740	139.37(2.88);155.0;n=18520	0.04
Urea, mmol/L	5.58(1.77);44.6;n=9731	7.23(4.22);61.12;n=30170	0.51*	5.58(1.77);44.6;n=9731	6.36(2.97);43.21;n=18526	0.32*
Protein, g/L	74.69(4.93);103.0;n=7753	73.42(5.85);113.0;n=20103	0.24*	74.69(4.93);103.0;n=7753	73.85(5.38);113.0;n=13275	0.16
Creatinine,	77.36(21.55);757.0;n=9746	108.39(99.85);1776.0;n=30273	0.43*	77.36(21.55);757.0;n=9746	91.32(57.29);1294.0;n=18583	0.32*

umol/L							
Alkaline phosphatase, U/L	74.0(25.91);744.0;n=8170	79.01(35.45);1679.0;n=21611	0.16	74.0(25.91);744.0;n=8170	75.77(28.66);668.0;n=14382	0.06	
Aspartate transaminase, U/L	28.04(29.06);701.0;n=2154	28.12(68.75);3699.9;n=5796	<0.01	28.04(29.06);701.0;n=2154	25.35(22.89);446.0;n=3485	0.10	
Alanine transaminase, U/L	34.09(30.81);738.0;n=6509	25.68(22.01);605.0;n=17235	0.31*	34.09(30.81);738.0;n=6509	28.14(23.77);605.0;n=11243	0.22*	
Bilirubin, umol/L	11.29(6.84);330.6;n=8151	11.0(6.87);439.1;n=21457	0.04	11.29(6.84);330.6;n=8151	11.12(5.9);152.0;n=14293	0.03	
Triglyceride, mmol/L	1.82(1.61);31.0;n=9347	1.67(1.34);44.88;n=28117	0.1	1.82(1.61);31.0;n=9347	1.73(1.44);29.49;n=17514	0.06	
Total cholesterol, mmol/L	4.17(1.27);12.9;n=9351	3.97(1.33);20.29;n=28142	0.15	4.17(1.27);12.9;n=9351	4.16(1.26);14.8;n=17526	0.01	
LDL, mmol/L	2.4(0.83);10.39;n=8611	2.37(0.79);17.76;n=24693	0.04	2.4(0.83);10.39;n=8611	2.43(0.81);11.98;n=15968	0.04	
HDL, mmol/L	1.18(0.31);2.93;n=8773	1.2(0.33);5.92;n=25094	0.05	1.18(0.31);2.93;n=8773	1.19(0.33);5.92;n=16310	0.03	
Fasting blood glucose, mmol/L	8.94(3.81);59.79;n=8166	8.62(3.69);67.3;n=26137	0.09	8.94(3.81);59.79;n=8166	8.7(3.91);64.6;n=16536	0.06	
HbA1c, g/dL	11.77(5.03);19.9;n=6495	10.53(4.92);19.5;n=17644	0.25*	11.77(5.03);19.9;n=6495	10.82(5.37);19.1;n=11445	0.18	

HF: heart failure; IHD: ischemic heart disease; COPD: chronic obstructive pulmonary disease; LDL: low-density lipoprotein cholesterol; HDL: high-density lipoprotein cholesterol.

**Table 2. Baseline characteristics of patients with DPP4I or SGLT2I use before and after propensity score matching (1:2) in the stroke cohort.**

\* for SMD $\geq$ 0.2

Characteristics	Before matching			After 1:2 matching		
	SGLT2I users (N=12482) Mean(SD);Max;N or Count(%)	DPP4I users (N=37081) Mean(SD);Max;N or Count(%)	SMD	SGLT2I users (N=12482) Mean(SD);Max;N or Count(%)	DPP4I users (N=24964) Mean(SD);Max;N or Count(%)	SMD
Male gender	7803(62.51%)	19441(52.42%)	0.21*	7803(62.51%)	15563(62.34%)	<0.01
Baseline age, year	60.07(11.5);95.61;n=12482	68.99(12.67);104.55;n=37081	0.74*	60.07(11.5);95.61;n=12482	61.04(11.17);96.55;n=24964	0.09
<50	2186(17.51%)	2409(6.49%)	0.34*	2186(17.51%)	3784(15.15%)	0.06
[50-60]	3730(29.88%)	6702(18.07%)	0.28*	3730(29.88%)	7525(30.14%)	0.01
[60-70]	4309(34.52%)	10689(28.82%)	0.12	4309(34.52%)	8592(34.41%)	<0.01
[70-80]	1796(14.38%)	9074(24.47%)	0.26*	1796(14.38%)	3955(15.84%)	0.04
>80	461(3.69%)	8207(22.13%)	0.57*	461(3.69%)	1108(4.43%)	0.04
Cardiovascular	2606(20.87%)	10489(28.28%)	0.17	2606(20.87%)	5130(20.54%)	0.01
Respiratory	2299(18.41%)	10416(28.08%)	0.23*	2299(18.41%)	4479(17.94%)	0.01
Renal	984(7.88%)	10877(29.33%)	0.57*	984(7.88%)	1926(7.71%)	0.01
Endocrine	182(1.45%)	873(2.35%)	0.07	182(1.45%)	364(1.45%)	<0.01
Hypertension	3724(29.83%)	22652(61.08%)	0.66*	3724(29.83%)	7627(30.55%)	0.02
Gastrointestinal	1928(15.44%)	11612(31.31%)	0.38*	1928(15.44%)	3918(15.69%)	0.01
HF	160(1.28%)	694(1.87%)	0.05	160(1.28%)	319(1.27%)	<0.01
IHD	1618(12.96%)	3678(9.91%)	0.1	1618(12.96%)	3097(12.40%)	0.02
Dementia	8(0.06%)	561(1.51%)	0.16	8(0.06%)	16(0.06%)	<0.01
COPD	2(0.01%)	9(0.02%)	0.01	2(0.01%)	4(0.01%)	<0.01
Cancer	203(1.62%)	1254(3.38%)	0.11	203(1.62%)	404(1.61%)	<0.01
Charlson score	1.72(1.21);12.0;n=12482	2.85(1.81);15.0;n=37081	0.73*	1.72(1.21);12.0;n=12482	1.78(1.23);11.0;n=24964	0.05
Gliclazide	6697(53.65%)	26884(72.50%)	0.40*	6697(53.65%)	13807(55.30%)	0.03
Glimepiride	1546(12.38%)	4809(12.96%)	0.02	1546(12.38%)	2997(12.00%)	0.01

Metformin	8027(64.30%)	26403(71.20%)	0.15	8027(64.30%)	16329(65.41%)	0.02
Sulphonylurea	1187(9.50%)	3711(10.00%)	0.02	1187(9.50%)	2304(9.22%)	0.01
Insulin	3707(29.69%)	7253(19.55%)	0.24*	3707(29.69%)	7105(28.46%)	0.03
Thiozolidinedone	562(4.50%)	295(0.79%)	0.23*	562(4.50%)	1065(4.26%)	0.01
Meglitinide	1108(8.87%)	3299(8.89%)	0	1108(8.87%)	2157(8.64%)	0.01
Glucagon-like peptide-1 agonist	184(1.47%)	11(0.02%)	0.17	184(1.47%)	340(1.36%)	0.01
Acarbose	101(0.80%)	283(0.76%)	0.01	101(0.80%)	202(0.80%)	<0.01
Diuretics for hypertension	630(5.04%)	0(0.00%)	0.33*	630(5.04%)	0(0.00%)	0.33*
Diuretics for HF	739(5.92%)	1(0.00%)	0.35*	739(5.92%)	4(0.01%)	0.35*
Anticoagulants	828(6.63%)	2(0.00%)	0.38*	828(6.63%)	21(0.08%)	0.37*
Antiplatelets	3096(24.80%)	2(0.00%)	0.81*	3096(24.80%)	157(0.62%)	0.78*
Lipid-lowering drugs	7139(57.19%)	4(0.01%)	1.63*	7139(57.19%)	55(0.22%)	1.62*
Mean corpuscular volume, fL	86.98(7.26);134.3;n=6383	87.51(7.76);135.4;n=17831	0.07	86.98(7.26);134.3;n=6383	86.77(7.54);119.9;n=11238	0.03
Basophil, x10 <sup>9</sup> /L	0.04(0.04);0.3;n=4090	0.04(0.07);7.22;n=13418	0.02	0.04(0.04);0.3;n=4090	0.04(0.09);7.22;n=8352	0.03
Eosinophil, x10 <sup>9</sup> /L	0.22(0.19);3.7;n=5106	0.23(0.29);16.3;n=14619	0.04	0.22(0.19);3.7;n=5106	0.23(0.28);16.3;n=9099	0.03
Lymphocyte, x10 <sup>9</sup> /L	2.18(1.01);34.8;n=5107	1.89(0.98);45.35;n=14640	0.29*	2.18(1.01);34.8;n=5107	2.08(1.0);45.35;n=9104	0.10
Monocyte, x10 <sup>9</sup> /L	0.53(0.23);3.6;n=5107	0.52(0.25);5.93;n=14640	0.01	0.53(0.23);3.6;n=5107	0.5(0.22);4.14;n=9104	0.11
Neutrophil, x10 <sup>9</sup> /L	5.02(2.3);26.6;n=5107	5.38(2.94);72.2;n=14640	0.14	5.02(2.3);26.6;n=5107	5.04(2.52);72.2;n=9104	0.01



White blood cells, x10 <sup>9</sup> /L	7.93(2.58);44.5;n=6390	7.96(3.23);180.4;n=17832	0.01	7.93(2.58);44.5;n=6390	7.87(3.57);180.4;n=11240	0.02
Mean cell haemoglobin, pg	29.24(2.89);43.8;n=6383	29.35(3.05);46.1;n=17831	0.04	29.24(2.89);43.8;n=6383	29.19(2.98);41.1;n=11238	0.02
Myelocyte, x10 <sup>9</sup> /L	0.29(0.29);1.33;n=20	0.73(3.47);36.1;n=109	0.18	0.29(0.29);1.33;n=20	0.99(4.93);36.1;n=53	0.2*
Platelet, x10 <sup>9</sup> /L	243.03(68.02);783.0;n=6390	235.91(74.46);999.0;n=17833	0.1	243.03(68.02);783.0;n=6390	243.65(72.64);728.0;n=11237	0.01
Reticulocyte, x10 <sup>9</sup> /L	60.81(23.54);111.0;n=41	65.69(83.11);1735.06;n=486	0.08	60.81(23.54);111.0;n=41	69.34(29.19);168.0;n=197	0.32*
Red blood cells, x10 <sup>12</sup> /L	4.77(0.59);9.18;n=6383	4.33(0.71);8.04;n=17831	0.67*	4.77(0.59);9.18;n=6383	4.61(0.65);7.86;n=11238	0.26*
Hematocrit, L/L	0.41(0.04);0.61;n=5423	0.38(0.05);0.59;n=14754	0.73*	0.41(0.04);0.61;n=5423	0.4(0.05);0.59;n=9025	0.33*
Potassium, mmol/L	4.27(0.43);7.6;n=9700	4.36(0.5);8.53;n=30739	0.19	4.27(0.43);7.6;n=9700	4.33(0.45);7.61;n=18457	0.12
Urate, mmol/L	0.37(0.1);0.91;n=1807	0.42(0.12);1.27;n=4273	0.41*	0.37(0.1);0.91;n=1807	0.41(0.12);0.97;n=2679	0.31*
Albumin, g/L	42.8(3.29);55.1;n=8153	40.93(4.34);53.6;n=22051	0.49*	42.8(3.29);55.1;n=8153	42.13(3.72);53.0;n=14261	0.19
Sodium, mmol/L	139.48(2.7);170.0;n=9703	139.27(3.08);161.0;n=30757	0.07	139.48(2.7);170.0;n=9703	139.39(2.86);155.0;n=18462	0.03
Urea, mmol/L	5.59(1.78);44.6;n=9694	7.3(4.28);61.12;n=30751	0.52*	5.59(1.78);44.6;n=9694	6.36(2.98);43.21;n=18469	0.31*
Protein, g/L	74.69(4.94);103.0;n=7736	73.39(5.88);113.0;n=20629	0.24*	74.69(4.94);103.0;n=7736	73.85(5.38);113.0;n=13244	0.16
Creatinine, umol/L	77.49(21.66);757.0;n=9710	109.2(100.3);1776.0;n=30857	0.44*	77.49(21.66);757.0;n=9710	91.38(57.16);1294.0;n=18525	0.32*
Alkaline phosphatase, U/L	74.03(26.17);744.0;n=8151	79.26(36.07);1679.0;n=22164	0.17	74.03(26.17);744.0;n=8151	75.63(28.95);668.0;n=14328	0.06
Aspartate transaminase, U/L	28.02(29.01);701.0;n=2156	27.77(61.74);3699.9;n=5968	0.01	28.02(29.01);701.0;n=2156	25.41(23.91);446.0;n=3452	0.10
Alanine transaminase, U/L	34.04(30.18);738.0;n=6505	25.58(22.32);605.0;n=17712	0.32*	34.04(30.18);738.0;n=6505	28.03(23.85);605.0;n=11243	0.22*

Bilirubin, umol/L	11.37(6.92);330.6;n=8133	11.09(6.94);439.1;n=22009	0.04	11.37(6.92);330.6;n=8133	11.18(5.98);152.0;n=14242	0.03
Triglyceride, mmol/L	1.82(1.62);31.0;n=9300	1.66(1.3);44.88;n=28577	0.11	1.82(1.62);31.0;n=9300	1.72(1.41);29.49;n=17450	0.07
Total cholesterol, mmol/L	4.17(1.27);12.9;n=9306	3.96(1.32);14.8;n=28603	0.16	4.17(1.27);12.9;n=9306	4.16(1.26);14.8;n=17462	0.01
LDL, mmol/L	2.4(0.82);10.39;n=8570	2.36(0.78);11.98;n=25155	0.05	2.4(0.82);10.39;n=8570	2.43(0.81);11.98;n=15941	0.04
HDL, mmol/L	1.18(0.32);2.93;n=8731	1.2(0.33);5.92;n=25552	0.05	1.18(0.32);2.93;n=8731	1.19(0.33);5.92;n=16272	0.04
Fasting blood glucose, mmol/L	8.94(3.81);59.79;n=8135	8.61(3.74);78.33;n=26646	0.09	8.94(3.81);59.79;n=8135	8.66(3.88);64.6;n=16475	0.07
HbA1c, g/dL	11.78(5.02);19.9;n=6474	10.53(4.9);19.5;n=18198	0.25*	11.78(5.02);19.9;n=6474	10.81(5.36);19.1;n=11402	0.19

HF: heart failure; IHD: ischemic heart disease; COPD: chronic obstructive pulmonary disease; LDL: low-density lipoprotein cholesterol; HDL: high-density lipoprotein cholesterol.

**Table 3. Cox-proportional hazard model analysis for all-cause mortality, cardiovascular mortality and new onset AF after propensity score matching (1:2).**

\* for  $p \leq 0.05$ , \*\* for  $p \leq 0.01$ , \*\*\* for  $p \leq 0.001$

Characteristics	All-cause mortality		Cardiovascular mortality		New onset AF	
	HR [95% CI]	P value	HR [95% CI]	P value	HR [95% CI]	P value
Male gender	1.36[1.22, 1.51]	<0.0001***	1.18[0.91, 1.52]	0.2100	1.47[1.11, 1.95]	0.0080**
Baseline age, year	1.08[1.07, 1.08]	<0.0001***	1.07[1.06, 1.08]	<0.0001***	1.09[1.08, 1.11]	<0.0001***
<50	0.28[0.22, 0.35]	<0.0001***	0.34[0.21, 0.56]	<0.0001***	0.11[0.05, 0.27]	<0.0001***
[50-60]	0.53[0.47, 0.60]	<0.0001***	0.58[0.43, 0.79]	0.0004***	0.43[0.31, 0.61]	<0.0001***
[60-70]	0.77[0.68, 0.86]	<0.0001***	0.70[0.53, 0.92]	0.0108*	0.78[0.58, 1.04]	0.0876.
[70-80]	2.55[2.28, 2.85]	<0.0001***	2.59[1.99, 3.37]	<0.0001***	3.43[2.61, 4.49]	<0.0001***
>80	5.79[5.07, 6.63]	<0.0001***	5.07[3.65, 7.06]	<0.0001***	5.80[4.11, 8.19]	<0.0001***

Cardiovascular	4.4[3.9, 4.8]	<0.0001***	15.3[11.5, 20.4]	<0.0001***	-	-
Respiratory	6.21[5.60, 6.88]	<0.0001***	5.80[4.55, 7.39]	<0.0001***	2.57[1.96, 3.37]	<0.0001***
Renal	3.40[3.01, 3.85]	<0.0001***	3.54[2.65, 4.72]	<0.0001***	1.93[1.33, 2.80]	0.0006***
Endocrine	3.56[2.83, 4.47]	<0.0001***	0.50[0.12, 2.01]	0.3280	2.99[1.59, 5.64]	0.0007***
Hypertension	1.90[1.72, 2.11]	<0.0001***	1.74[1.36, 2.22]	<0.0001***	3.52[2.70, 4.60]	<0.0001***
Gastrointestinal	2.51[2.25, 2.80]	<0.0001***	0.85[0.60, 1.21]	0.3670	1.99[1.49, 2.66]	<0.0001***
HF	6.62[5.29, 8.28]	<0.0001***	8.19[5.07, 13.21]	<0.0001***	8.63[5.11, 14.57]	<0.0001***
IHD	2.55[2.26, 2.88]	<0.0001***	6.41[5.02, 8.18]	<0.0001***	2.27[1.65, 3.14]	<0.0001***
Dementia	6.73[2.52, 17.97]	0.0001***	-	-	-	-
COPD	5.27[0.74, 37.46]	0.0966.	-	-	-	-
Cancer	5.37[4.37, 6.61]	<0.0001***	1.17[0.44, 3.14]	0.7560	5.30[3.09, 9.10]	<0.0001***
Charlson score	1.75[1.71, 1.79]	<0.0001***	1.68[1.59, 1.79]	<0.0001***	1.75[1.64, 1.87]	<0.0001***
SGLT2I	0.69[0.60, 0.79]	<0.0001***	0.79[0.58, 1.09]	0.1510	0.43[0.28, 0.66]	0.0001***
DPP4I	1.45[1.27, 1.67]	<0.0001***	1.26[0.92, 1.72]	0.1510	2.34[1.51, 3.60]	0.0001***
Gliclazide	1.35[1.22, 1.50]	<0.0001***	1.93[1.49, 2.50]	<0.0001***	2.12[1.60, 2.82]	<0.0001***
Glimepiride	0.83[0.70, 0.97]	0.0226*	0.87[0.59, 1.27]	0.4570	0.81[0.54, 1.23]	0.3330
Metformin	1.00[0.89, 1.11]	0.9310	1.00[0.77, 1.29]	0.9760	1.41[1.04, 1.89]	0.0248*
Sulphonylurea	0.79[0.66, 0.95]	0.0105*	0.75[0.48, 1.17]	0.2000	0.71[0.44, 1.15]	0.1640
Insulin	1.05[0.94, 1.17]	0.3710	1.13[0.88, 1.46]	0.3410	0.48[0.34, 0.66]	<0.0001***
Thiozolidinedone	0.52[0.39, 0.69]	<0.0001***	0.65[0.34, 1.22]	0.1820	0.34[0.14, 0.84]	0.0187*
Meglitinide	0.82[0.68, 0.99]	0.0348*	0.79[0.51, 1.24]	0.3080	0.71[0.43, 1.16]	0.1710
Glucagon-like peptide-1 agonist	0.61[0.39, 0.95]	0.0281*	0.19[0.03, 1.32]	0.0926.	0.00[0.00, Inf]	0.9900
Acarbose	1.66[1.06, 2.57]	0.0253*	0.94[0.23, 3.76]	0.9260	4.51[2.23, 9.14]	<0.0001***
Diuretics for hypertension	0.65[0.38, 1.10]	0.1060	0.28[0.04, 1.96]	0.1980	0.99[0.32, 3.10]	0.9870
Diuretics for HF	1.95[1.41, 2.69]	0.0001***	5.41[3.30, 8.86]	<0.0001***	0.36[0.05, 2.58]	0.3110
Anticoagulants	1.39[0.97, 1.99]	0.0719.	4.27[2.53, 7.19]	<0.0001***	1.67[0.62, 4.49]	0.313
Antiplatelets	0.99[0.81, 1.21]	0.918	1.76[1.2, 2.57]	0.0039**	0.72[0.37, 1.42]	0.0345

Lipid-lowering drugs	0.65[0.54, 0.77]	<0.0001***	0.95[0.66, 1.36]	0.7670	0.40[0.23, 0.70]	0.0014**
Mean corpuscular volume, fL	1.02[1.01, 1.03]	0.0001***	1.01[0.99, 1.03]	0.5120	1.02[0.99, 1.05]	0.1190
Basophil, x10 <sup>9</sup> /L	1.18[0.66, 2.12]	0.5820	1.54[0.92, 2.59]	0.1010	1.51[0.72, 3.16]	0.2770
Eosinophil, x10 <sup>9</sup> /L	1.00[0.76, 1.30]	0.9830	1.20[0.97, 1.48]	0.0973.	1.18[0.89, 1.55]	0.2460
Lymphocyte, x10 <sup>9</sup> /L	0.59[0.53, 0.65]	<0.0001***	0.86[0.70, 1.07]	0.1710	0.82[0.64, 1.04]	0.1020
Monocyte, x10 <sup>9</sup> /L	1.68[1.27, 2.22]	0.0002***	2.40[1.36, 4.22]	0.0025**	4.35[2.71, 6.98]	<0.0001***
Neutrophil, x10 <sup>9</sup> /L	1.06[1.05, 1.08]	<0.0001***	1.07[1.04, 1.10]	<0.0001***	1.06[1.02, 1.10]	0.0016**
White blood cells, x10 <sup>9</sup> /L	1.024[1.018, 1.030]	<0.0001***	1.03[1.03, 1.04]	<0.0001***	1.02[1.00, 1.04]	0.0256*
Mean cell haemoglobin, pg	1.02[1.00, 1.04]	0.0953.	0.99[0.94, 1.04]	0.5970	1.003[0.947, 1.063]	0.9070
Myelocyte, x10 <sup>9</sup> /L	0.58[0.14, 2.32]	0.4390	0.93[0.24, 3.57]	0.9120	1.000[0.815, 1.227]	0.9990
Platelet, x10 <sup>9</sup> /L	1.00[1.00, 1.00]	0.0016**	1.002[1.000, 1.004]	0.0525.	0.995[0.992, 0.998]	0.0002***
Reticulocyte, x10 <sup>9</sup> /L	1.00[0.98, 1.01]	0.7560	1.000[0.980, 1.021]	0.9740	0.96[0.91, 1.02]	0.1470
Red blood cells, x10 <sup>12</sup> /L	0.55[0.50, 0.62]	<0.0001***	0.67[0.52, 0.86]	0.0015**	0.83[0.63, 1.09]	0.1800
Hematocrit, L/L	0.00[0.00, 0.01]	<0.0001***	0.00[0.00, 0.10]	0.0011**	0.26[0.00, 14.31]	0.5140
Potassium, mmol/L	1.12[0.99, 1.27]	0.0719.	0.95[0.70, 1.29]	0.7480	1.15[0.84, 1.57]	0.3920
Urate, mmol/L	11.6[3.3, 41.2]	0.0002***	183.0[15.2, 2205.0]	<0.0001***	22.17[2.13, 230.50]	0.0095**
Albumin, g/L	0.87[0.86, 0.88]	<0.0001***	0.86[0.84, 0.89]	<0.0001***	0.96[0.92, 1.00]	0.0409*
Sodium, mmol/L	0.94[0.92, 0.96]	<0.0001***	0.89[0.86, 0.93]	<0.0001***	1.02[0.97, 1.07]	0.5570
Urea, mmol/L	1.07[1.06, 1.09]	<0.0001***	1.06[1.02, 1.09]	0.0008***	1.06[1.03, 1.09]	0.0003***
Protein, g/L	0.95[0.94, 0.96]	<0.0001***	0.98[0.95, 1.00]	0.0780.	0.98[0.95, 1.01]	0.2140
Creatinine, umol/L	1.002[1.002, 1.003]	<0.0001***	1.002[1.001, 1.003]	0.0006***	1.002[1.001, 1.003]	0.0054**
Alkaline phosphatase, U/L	1.01[1.01, 1.01]	<0.0001***	1.006[1.004, 1.008]	<0.0001***	0.999[0.993, 1.005]	0.7260
Aspartate transaminase, U/L	1.004[1.001, 1.006]	0.0059**	1.004[0.999, 1.009]	0.1560	0.998[0.983, 1.014]	0.8170
Alanine transaminase, U/L	0.997[0.994, 1.001]	0.1130	0.996[0.988, 1.004]	0.3510	0.988[0.977, 0.999]	0.0389*
Bilirubin, umol/L	1.012[1.007, 1.018]	<0.0001***	1.02[1.01, 1.03]	<0.0001***	1.02[1.01, 1.03]	<0.0001***
Triglyceride, mmol/L	0.94[0.89, 0.99]	0.0120*	0.96[0.85, 1.07]	0.4200	0.87[0.75, 1.00]	0.0543
Total cholesterol, mmol/L	0.95[0.91, 1.00]	0.0559.	0.96[0.86, 1.08]	0.5170	0.87[0.77, 0.98]	0.0195*

LDL, mmol/L	1.07[0.99, 1.15]	0.0816.	0.91[0.76, 1.09]	0.3180	0.77[0.63, 0.94]	0.0098**
HDL, mmol/L	0.75[0.62, 0.92]	0.0053**	0.27[0.16, 0.46]	<0.0001***	0.27[0.16, 0.47]	<0.0001***
Fasting blood glucose, mmol/L	1.03[1.02, 1.04]	<0.0001***	1.04[1.02, 1.07]	0.0003***	0.96[0.92, 1.01]	0.0957
HbA1c, g/dL	0.99[0.98, 1.00]	0.0537.	0.97[0.94, 0.99]	0.0113*	0.98[0.95, 1.01]	0.1480

HF: heart failure; IHD: ischemic heart disease; COPD: chronic obstructive pulmonary disease; LDL: low-density lipoprotein cholesterol; HDL: high-density lipoprotein cholesterol.

**Table 4. Cox regression models for all-cause mortality, cardiovascular mortality and new onset stroke after propensity score matching (1:2).**

\* for  $p \leq 0.05$ , \*\* for  $p \leq 0.01$ , \*\*\* for  $p \leq 0.001$

Characteristics	All-cause mortality		Cardiovascular mortality		New onset stroke	
	HR [95% CI]	P value	HR [95% CI]	P value	HR [95% CI]	P value
Male gender	1.27[1.14, 1.41]	<0.0001***	1.16[0.91, 1.47]	0.2310	1.07[0.87, 1.31]	0.5440
Baseline age, year	1.08[1.07, 1.08]	<0.0001***	1.08[1.06, 1.09]	<0.0001***	1.09[1.08, 1.10]	<0.0001***
<50	0.25[0.20, 0.31]	<0.0001***	0.30[0.18, 0.49]	<0.0001***	0.16[0.09, 0.28]	<0.0001***
[50-60]	0.50[0.44, 0.57]	<0.0001***	0.54[0.41, 0.72]	<0.0001***	0.34[0.25, 0.45]	<0.0001***
[60-70]	0.77[0.69, 0.86]	<0.0001***	0.70[0.54, 0.90]	0.0063**	1.06[0.86, 1.31]	0.5590
[70-80]	2.56[2.30, 2.85]	<0.0001***	2.42[1.88, 3.11]	<0.0001***	3.33[2.70, 4.10]	<0.0001***
>80	6.07[5.35, 6.89]	<0.0001***	6.23[4.68, 8.31]	<0.0001***	4.41[3.30, 5.90]	<0.0001***
Cardiovascular	5.1[4.6, 5.6]	<0.0001***	16.97[12.8, 22.5]	<0.0001***	3.11[2.53, 3.80]	<0.0001***
Respiratory	6.51[5.89, 7.19]	<0.0001***	6.23[4.95, 7.84]	<0.0001***	1.95[1.56, 2.43]	<0.0001***
Renal	3.41[3.03, 3.84]	<0.0001***	3.59[2.74, 4.70]	<0.0001***	1.82[1.36, 2.44]	0.0001***
Endocrine	3.86[3.12, 4.77]	<0.0001***	0.65[0.21, 2.04]	0.4650	2.59[1.55, 4.35]	0.0003***
Hypertension	1.98[1.79, 2.18]	<0.0001***	1.80[1.43, 2.27]	<0.0001***	6.46[5.15, 8.10]	<0.0001***
Gastrointestinal	2.57[2.32, 2.86]	<0.0001***	1.03[0.76, 1.40]	0.8520	1.42[1.11, 1.82]	0.0046**
HF	7.18[5.87, 8.79]	<0.0001***	8.90[5.86, 13.51]	<0.0001***	0.87[0.28, 2.72]	0.8140
IHD	2.81[2.50, 3.15]	<0.0001***	5.92[4.69, 7.46]	<0.0001***	2.45[1.92, 3.13]	<0.0001***
Dementia	8.20[3.68, 18.28]	<0.0001***	6.84[0.96, 48.73]	0.0550.	-	-

COPD	4.91[0.69, 34.91]	0.1120	-	-	-	-
Cancer	5.13[4.20, 6.27]	<0.0001***	1.24[0.51, 3.00]	0.6360	2.35[1.29, 4.28]	0.0052**
Charlson score	1.79[1.74, 1.83]	<0.0001***	1.75[1.66, 1.85]	<0.0001***	1.69[1.60, 1.79]	<0.0001***
SGLT2I	0.64[0.56, 0.74]	<0.0001***	0.74[0.55, 1.00]	0.0470*	0.46[0.33, 0.64]	<0.0001***
DPP4I	1.55[1.35, 1.78]	<0.0001***	1.36[1.00, 1.83]	0.0470*	2.19[1.57, 3.06]	<0.0001***
Gliclazide	1.34[1.22, 1.49]	<0.0001***	1.82[1.43, 2.32]	<0.0001***	1.77[1.43, 2.18]	<0.0001***
Glimepiride	0.81[0.69, 0.95]	0.0095**	0.82[0.57, 1.19]	0.2990	0.81[0.58, 1.11]	0.1860
Metformin	0.98[0.89, 1.09]	0.7590	1.05[0.82, 1.34]	0.6840	1.45[1.15, 1.83]	0.0016**
Sulphonylurea	0.76[0.64, 0.91]	0.0031**	0.70[0.45, 1.08]	0.1080	0.85[0.60, 1.19]	0.3360
Insulin	1.06[0.95, 1.17]	0.3190	1.12[0.88, 1.43]	0.3410	0.84[0.67, 1.04]	0.1110
Thiozolidinedone	0.51[0.38, 0.67]	<0.0001***	0.58[0.31, 1.10]	0.0951.	1.56[1.10, 2.20]	0.0116*
Meglitinide	0.79[0.66, 0.95]	0.0104*	0.71[0.45, 1.10]	0.1280	0.79[0.55, 1.13]	0.1960
Glucagon-like peptide-1 agonist	0.60[0.39, 0.93]	0.0221*	0.17[0.02, 1.19]	0.0736.	3.19[2.15, 4.72]	<0.0001***
Acarbose	1.66[1.08, 2.56]	0.0206*	0.85[0.21, 3.40]	0.8130	1.61[0.67, 3.90]	0.2880
Diuretics for hypertension	0.58[0.33, 1.00]	0.0483*	0.25[0.03, 1.75]	0.1610	0.61[0.19, 1.88]	0.3860
Diuretics for HF	1.98[1.47, 2.68]	<0.0001***	5.17[3.28, 8.15]	<0.0001***	0.21[0.03, 1.47]	0.1150
Anticoagulants	1.37[0.98, 1.92]	0.0644.	4.13[2.56, 6.66]	<0.0001***	0.84[0.35, 2.03]	0.7000
Antiplatelets	0.94[0.76, 1.15]	0.513	1.62[1.11, 2.36]	0.0131*	0.66[0.41, 1.06]	0.0848.
Lipid-lowering drugs	0.60[0.50, 0.71]	<0.0001***	0.82[0.57, 1.17]	0.2670	0.61[0.42, 0.89]	0.0091**
Mean corpuscular volume, fL	1.03[1.02, 1.04]	<0.0001***	1.01[0.99, 1.03]	0.2490	1.04[1.02, 1.06]	0.0013**
Basophil, x10 <sup>9</sup> /L	1.01[0.40, 2.54]	0.9790	1.45[0.79, 2.67]	0.2270	1.49[0.70, 3.15]	0.3000
Eosinophil, x10 <sup>9</sup> /L	1.05[0.85, 1.30]	0.6590	1.18[0.95, 1.47]	0.1420	1.25[1.02, 1.52]	0.0302*
Lymphocyte, x10 <sup>9</sup> /L	0.54[0.49, 0.60]	<0.0001***	0.70[0.57, 0.86]	0.0008***	1.12[1.04, 1.20]	0.0017**
Monocyte, x10 <sup>9</sup> /L	1.92[1.47, 2.50]	<0.0001***	2.42[1.42, 4.12]	0.0012**	4.85[3.18, 7.40]	<0.0001***
Neutrophil, x10 <sup>9</sup> /L	1.06[1.05, 1.08]	<0.0001***	1.06[1.03, 1.09]	<0.0001***	1.07[1.03, 1.10]	0.0001***
White blood cells, x10 <sup>9</sup> /L	1.023[1.016, 1.029]	<0.0001***	1.03[1.02, 1.04]	<0.0001***	1.04[1.03, 1.04]	<0.0001***
Mean cell haemoglobin, pg	1.03[1.00, 1.05]	0.0217*	0.99[0.95, 1.04]	0.7220	1.08[1.02, 1.14]	0.0124*

Myelocyte, x10 <sup>9</sup> /L	0.57[0.13, 2.43]	0.4470	0.93[0.28, 3.14]	0.9120	0.95[0.36, 2.54]	0.9200
Platelet, x10 <sup>9</sup> /L	0.998[0.997, 0.999]	<0.0001***	1.000[0.998, 1.002]	0.8600	1.00[1.00, 1.00]	0.4410
Reticulocyte, x10 <sup>9</sup> /L	0.996[0.981, 1.010]	0.5670	1.002[0.980, 1.025]	0.8430	-	-
Red blood cells, x10 <sup>12</sup> /L	0.52[0.47, 0.57]	<0.0001***	0.62[0.49, 0.78]	<0.0001***	0.68[0.53, 0.85]	0.0011**
Hematocrit, L/L	0.00[0.00, 0.00]	<0.0001***	0.00[0.00, 0.02]	<0.0001***	0.03[0.00, 0.68]	0.0285*
Potassium, mmol/L	1.11[0.98, 1.25]	0.1100	0.95[0.71, 1.26]	0.7060	1.19[0.93, 1.52]	0.1650
Urate, mmol/L	14.06[4.25, 46.51]	<0.0001***	730.50[82.49, 6470.00]	<0.0001***	0.13[0.01, 1.32]	0.0835.
Albumin, g/L	0.87[0.86, 0.88]	<0.0001***	0.87[0.85, 0.89]	<0.0001***	0.91[0.89, 0.94]	<0.0001***
Sodium, mmol/L	0.94[0.93, 0.96]	<0.0001***	0.89[0.86, 0.92]	<0.0001***	1.01[0.97, 1.05]	0.5820
Urea, mmol/L	1.08[1.07, 1.09]	<0.0001***	1.07[1.04, 1.10]	<0.0001***	1.03[1.00, 1.06]	0.0654.
Protein, g/L	0.96[0.95, 0.97]	<0.0001***	0.99[0.96, 1.01]	0.3220	1.03[1.00, 1.05]	0.0218*
Creatinine, umol/L	1.002[1.002, 1.003]	<0.0001***	1.002[1.002, 1.003]	<0.0001***	1.001[1.000, 1.003]	0.0119*
Alkaline phosphatase, U/L	1.006[1.005, 1.007]	<0.0001***	1.006[1.004, 1.008]	<0.0001***	1.002[0.999, 1.005]	0.2230
Aspartate transaminase, U/L	1.004[1.001, 1.006]	0.0066**	1.003[0.996, 1.009]	0.4200	0.94[0.91, 0.98]	0.0024**
Alanine transaminase, U/L	0.999[0.996, 1.002]	0.3800	1.000[0.994, 1.006]	0.8810	0.98[0.96, 0.99]	<0.0001***
Bilirubin, umol/L	1.014[1.009, 1.018]	<0.0001***	1.016[1.008, 1.024]	0.0001***	1.02[1.01, 1.02]	0.0009***
Triglyceride, mmol/L	0.91[0.87, 0.96]	0.0005***	0.95[0.86, 1.06]	0.3630	0.89[0.80, 0.98]	0.0243*
Total cholesterol, mmol/L	0.93[0.88, 0.97]	0.0013**	0.97[0.87, 1.08]	0.5270	0.84[0.77, 0.92]	0.0001***
LDL, mmol/L	1.03[0.96, 1.11]	0.4630	0.93[0.79, 1.11]	0.4250	0.85[0.73, 0.99]	0.0342*
HDL, mmol/L	0.76[0.63, 0.92]	0.0059**	0.33[0.20, 0.55]	<0.0001***	0.87[0.61, 1.25]	0.4570
Fasting blood glucose, mmol/L	1.03[1.01, 1.04]	<0.0001***	1.04[1.02, 1.06]	0.0012**	1.02[0.99, 1.04]	0.2220
HbA1c, g/dL	0.98[0.97, 0.99]	0.0046**	0.97[0.94, 0.99]	0.0089**	1.00[0.97, 1.03]	0.9100

HF: heart failure; IHD: ischemic heart disease; COPD: chronic obstructive pulmonary disease; LDL: low-density lipoprotein cholesterol; HDL: high-density lipoprotein cholesterol.

**Table 5. Multivariate cox analysis for all-cause mortality, cardiovascular mortality and new onset AF after propensity score matching (1:2).**

\* for  $p \leq 0.05$ , \*\* for  $p \leq 0.01$ , \*\*\* for  $p \leq 0.001$

Characteristics	All-cause mortality		Cardiovascular mortality		New onset AF		
	HR [95% CI]	P value	HR [95% CI]	P value	HR [95% CI]	P value	
Model 1	SGLT2I (DPP4I as reference)	0.69[0.60, 0.79]	<0.0001***	0.79[0.58, 1.09]	0.1510	0.43[0.28, 0.66]	0.0001***
	DPP4I (SGLT2I as reference)	1.45[1.27, 1.67]	<0.0001***	1.26[0.92, 1.72]	0.1510	2.34[1.51, 3.60]	0.0001***
Model 2	SGLT2I (DPP4I as reference)	0.76[0.66, 0.87]	<0.0001***	0.82[0.60, 1.12]	0.2200	0.58[0.38, 0.91]	0.0161*
	DPP4I (SGLT2I as reference)	1.32[1.15, 1.5]	<0.0001***	1.22[0.89, 1.66]	0.2200	1.72[1.11, 2.66]	0.0161*
Model 3	SGLT2I (DPP4I as reference)	0.72[0.63,0.82]	<0.0001***	0.78[0.57, 1.07]	0.1220	0.58[0.37, 0.90]	0.0143*
	DPP4I (SGLT2I as reference)	1.39[1.21,1.60]	<0.0001***	1.28[0.94, 1.75]	0.1220	1.73[1.11, 2.69]	0.0143*
Model 4	SGLT2I (DPP4I as reference)	0.68[0.57, 0.79]	<0.0001***	0.75[0.54, 1.03]	0.7810	0.57[0.36, 0.88]	0.0132*
	DPP4I (SGLT2I as reference)	1.36[1.18, 1.54]	<0.0001***	1.23[0.88, 1.66]	0.7810	1.71[1.08, 2.63]	0.0132*

IR: incidence rate.

Model 1 adjusted for none.

Model 2 adjusted for age and gender.

Model 3 adjusted for age, gender, cardiovascular, respiratory, renal, endocrine, hypertension, gastrointestinal, HF, IHD, dementia, COPD, cancer, and Charlson score.

Model 4 adjusted for gliclazide, glimepiride, metformin, sulphonylurea, insulin, thiazolidinedione, meglitinide, glucagon-like peptide-1 agonist, acarbose, diuretics for hypertension, diuretics for HF, anticoagulants, antiplatelets, lipid-lowering drugs in model 3.

**Table 6. Multivariate cox analysis for all-cause mortality, cardiovascular mortality and new onset stroke after propensity score matching (1:2).**

\* for  $p \leq 0.05$ , \*\* for  $p \leq 0.01$ , \*\*\* for  $p \leq 0.001$

Characteristics	All-cause mortality		Cardiovascular mortality		New onset stroke		
	HR [95% CI]	P value	HR [95% CI]	P value	HR [95% CI]	P value	
Model	SGLT2I (DPP4I as reference)	0.64[0.56, 0.74]	<0.0001***	0.74[0.55, 1.00]	0.0470*	0.46[0.33, 0.64]	<0.0001***



1	DPP4I (SGLT2I as reference)	1.55[1.35, 1.78]	<0.0001***	1.36[1.00, 1.83]	0.0470*	2.19[1.57, 3.06]	<0.0001***
Model 2	SGLT2I (DPP4I as reference)	0.72[0.63, 0.83]	<0.0001***	0.80[0.59, 1.07]	0.1330	0.43[0.31, 0.59]	<0.0001***
	DPP4I (SGLT2I as reference)	1.38[1.21, 1.58]	<0.0001***	1.26[0.93, 1.70]	0.1330	2.35[1.69, 3.28]	<0.0001***
Model 3	SGLT2I (DPP4I as reference)	0.69[0.60, 0.79]	<0.0001***	0.75[0.56, 1.02]	0.0621	0.43[0.31, 0.60]	<0.0001***
	DPP4I (SGLT2I as reference)	1.46[1.27, 1.67]	<0.0001***	1.34[0.99, 1.81]	0.0621	2.32[1.66, 3.23]	<0.0001***
Model 4	SGLT2I (DPP4I as reference)	0.97[0.81, 0.99]	<0.0001***	0.89[0.67, 1.11]	0.0822	0.41[0.32, 0.61]	<0.0001***
	DPP4I (SGLT2I as reference)	1.03[1.01, 1.23]	<0.0001***	1.29[0.89, 1.78]	0.0822	2.03[1.59, 3.01]	<0.0001***

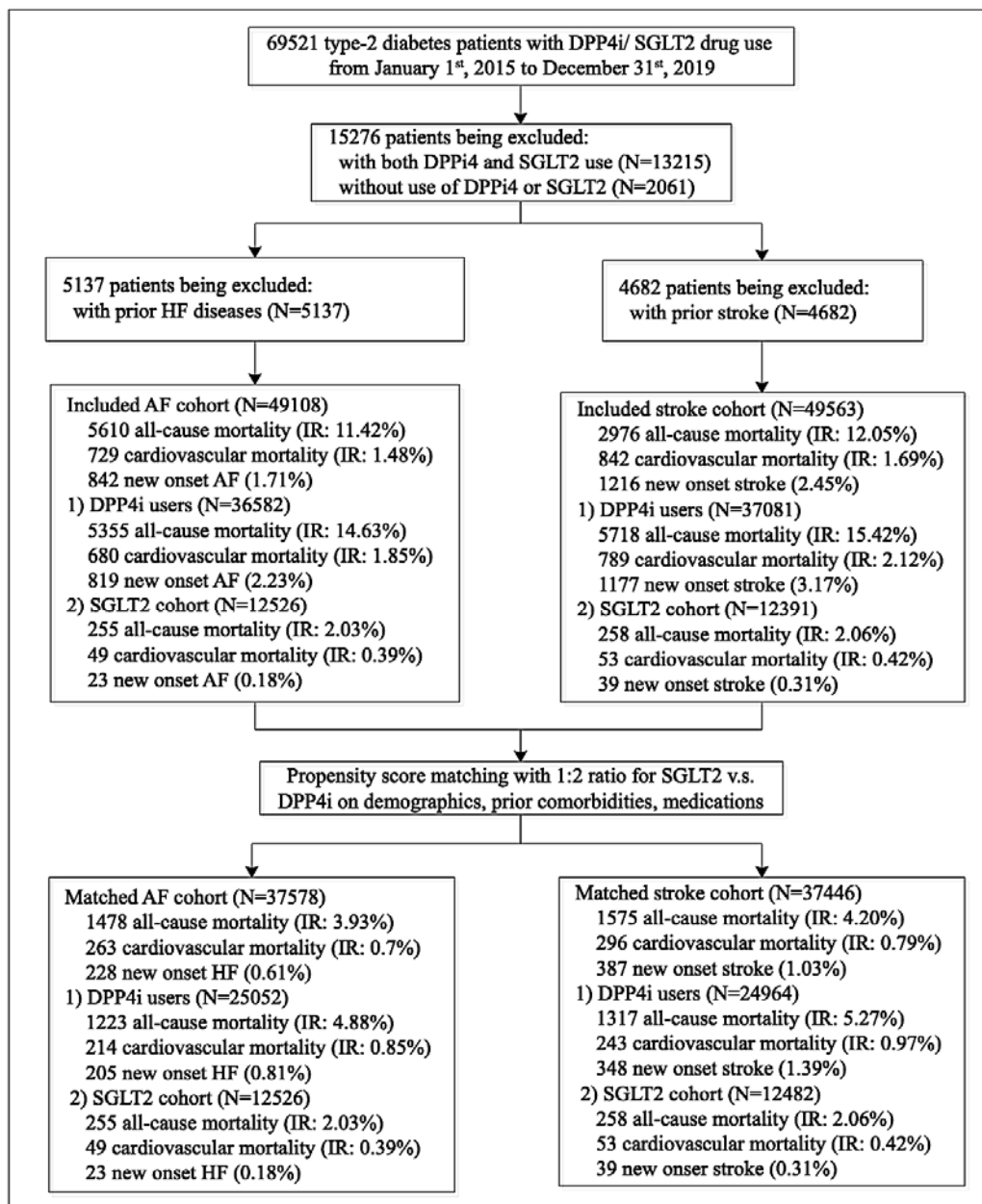
IR: incidence rate.

Model 1 adjusted for none.

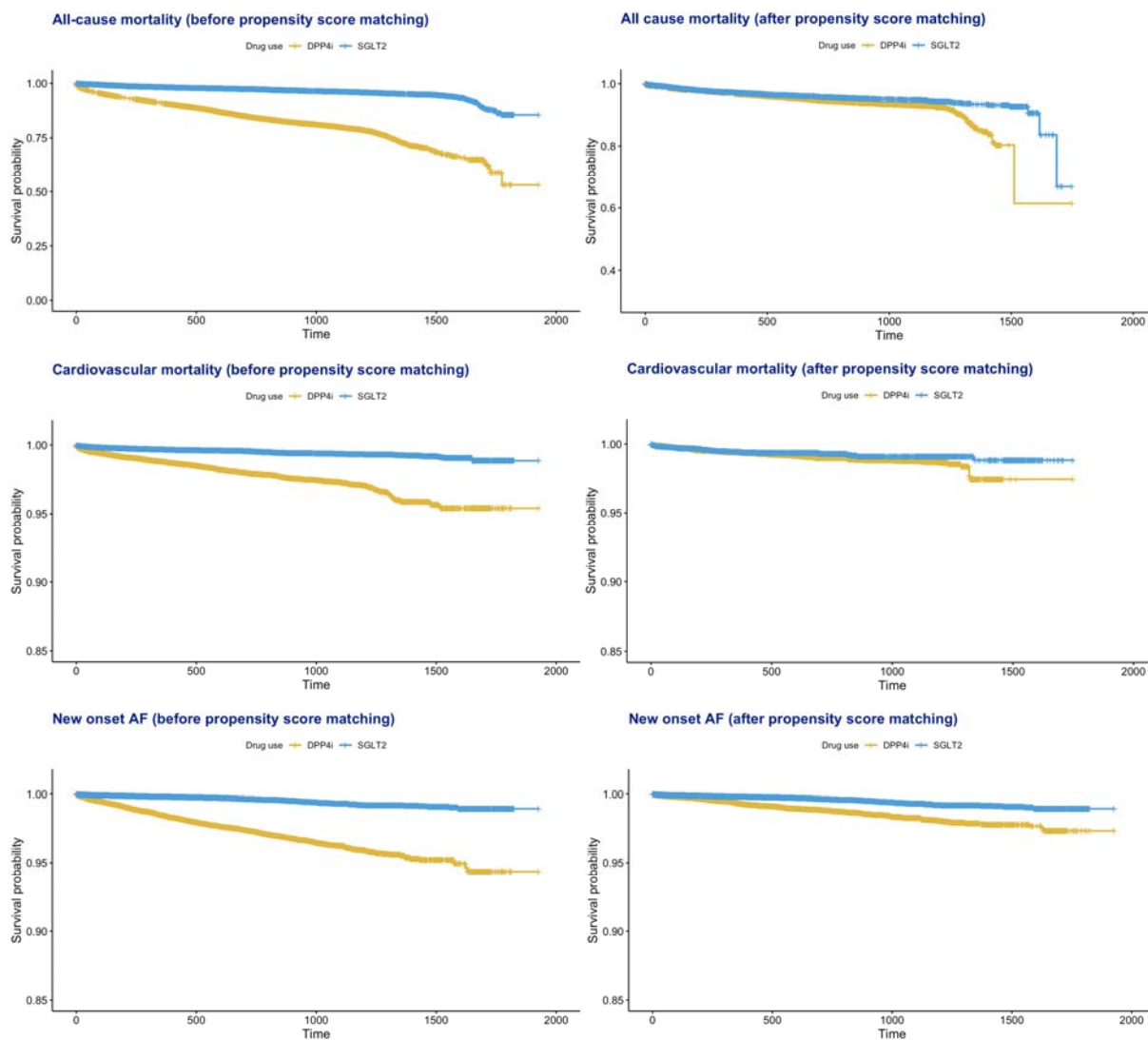
Model 2 adjusted for age and gender.

Model 3 adjusted for age, gender, cardiovascular, respiratory, renal, endocrine, hypertension, gastrointestinal, HF, IHD, dementia, COPD, cancer, and Charlson score.

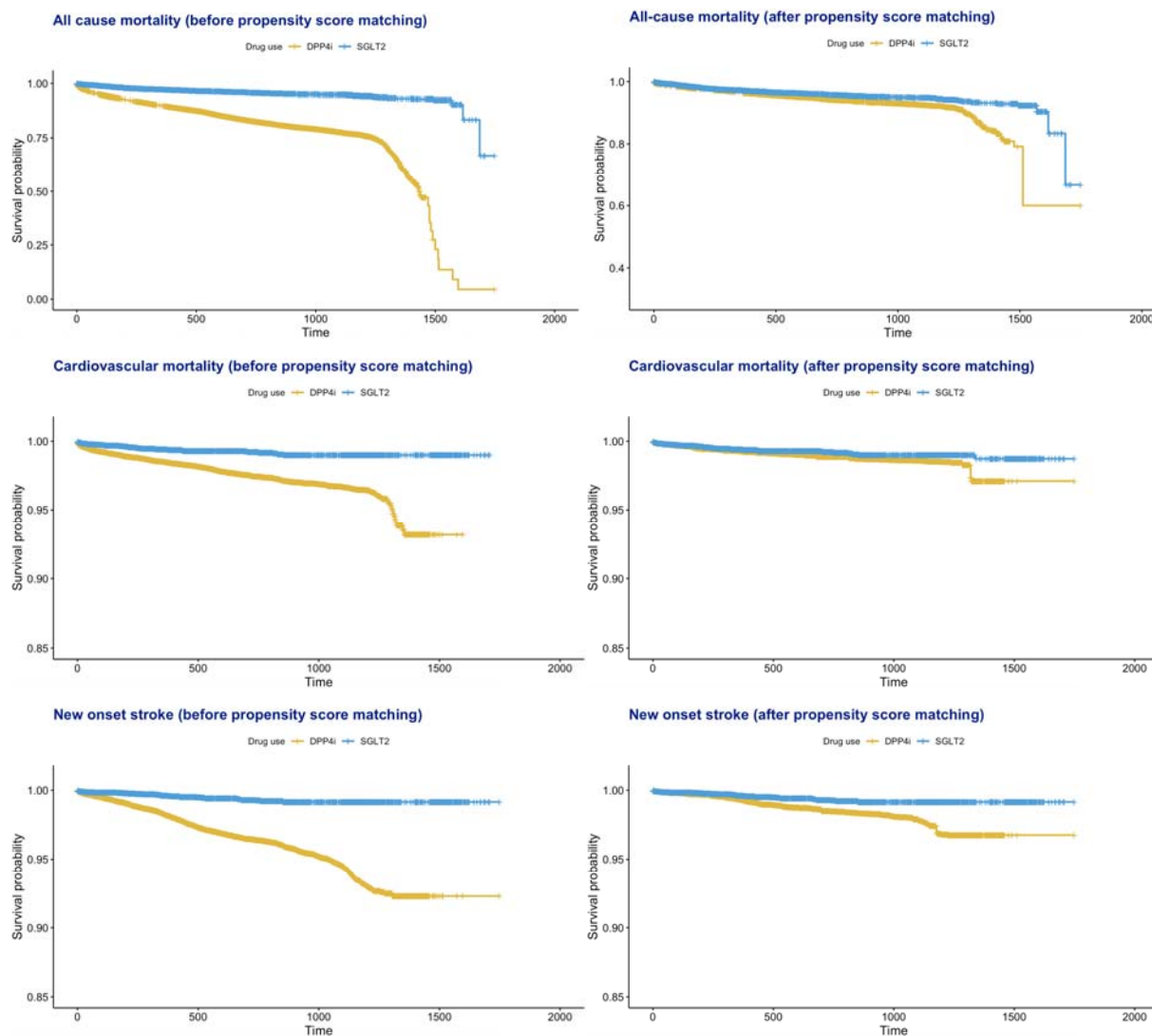
Model 4 adjusted for gliclazide, glimepiride, metformin, sulphonylurea, insulin, thiazolidinedione, meglitinide, glucagon-like peptide-1 agonist, acarbose, diuretics for hypertension, diuretics for HF, anticoagulants, antiplatelets, lipid-lowering drugs in model 3.



**Figure 1. Procedures of data processing for the study cohort**



**Figure 2. Kaplan-Meier survival curves for all-cause mortality, cardiovascular mortality and new onset AF stratified by drug use of DPP4I and SGLT2I before and after propensity score matching (1:2).**



**Figure 3. Kaplan-Meier survival curves for all-cause mortality, cardiovascular mortality and new onset stroke stratified by the drug use of DPP4I and SGLT2I before and after propensity score matching (1:2).**