

1 **Differential impact of antiretroviral therapy initiated before or during pregnancy on**
2 **placenta pathology in HIV-positive women.**

3
4 Nadia M IKUMI^{1†}, Thokozile R MALABA^{2†}, Komala PILLAY^{3,4}, Marta C COHEN^{5,6}, Hlengiwe P
5 MADLALA², Mushi MATJILA⁷, Dilly ANUMBA⁸, Landon MYER², Marie-Louise NEWELL^{9,10}, and
6 Clive M GRAY^{1,4*}, for the PIMS Study Group

7
8 ¹Division of Immunology, Institute of Infectious Disease and Molecular Medicine, University
9 of Cape Town, Cape Town, South Africa

10 ²Division of Epidemiology and Biostatistics, School of Public Health and Family Medicine,
11 University of Cape Town, Cape Town, South Africa

12 ³Division of Anatomical Pathology, Department of Pathology, University of Cape Town, Cape
13 Town, South Africa

14 ⁴National Health Laboratory Services, Groote Schuur Hospital, Cape Town, South Africa

15 ⁵Department of Histopathology, Sheffield Children's NHS Foundation Trust, Sheffield, UK

16 ⁶Department of Oncology and Metabolism, University of Sheffield, Sheffield, UK

17 Department of Obstetrics and Gynaecology, University of Cape Town, Cape Town South
18 Africa

19 ⁷Department of Obstetrics and Gynaecology, University of Cape Town, Cape Town South
20 Africa

21 ⁸Academic Unit of Reproductive and Developmental Medicine, University of Sheffield,
22 Sheffield, United Kingdom

23 ⁹School of Human Development and Health, Faculty of Medicine, University of
24 Southampton, Southampton, United Kingdom

25 ¹⁰School of Public Health, Faculty of Health Sciences, University of Witwatersrand,
26 Johannesburg, South Africa

27
28 **Conflict of interest statement**

29 The authors report no conflict of interest.

30
31 **Funding Support:** The research reported in this publication was supported by the Eunice
32 Kennedy Shriver National Institute of Child Health & Human Development of the National
33 Institutes of Health under Award Number R01 HD080385 (PIMS Prematurity Immunology in
34 HIV-Infected Women and their Infants Study); also in part by the National Institute for
35 Health Research (NIHR) (17/63/26) using UK Government aid to support global health
36 research and by the Academy of Medical Sciences networking grant. The views expressed in
37 this publication are those of the author(s) and not necessarily those of the NICH NIH, NIHR
38 or the UK Department of Health and Social Care.

39
40 † Co-First Authors

41
42 ***Corresponding Author**

43 Clive M Gray, Division of Immunology, Institute of Infectious Disease and Molecular
44 Medicine, Falmouth Building, Faculty of Health Sciences, University of Cape Town, Anzio
45 Road, Observatory, Cape Town, South Africa, 7925; Tel: +27 21406 6616; Email:
46 clive.gray@uct.ac.za

47
48 **Short Title**

49 ART and placenta pathology

50
51 **Word count:** Body: 3220; Abstract: 239

53 **ABSTRACT**

54 **Objective:**

55 To examine the association between timing of ART initiation in HIV-infected women and
56 placental histopathology.

57

58 **Design:**

59 A nested sub-study in a larger cohort of HIV-infected women which examined the
60 association between ART status and birth outcomes.

61

62 **Methods:**

63 Placentas (n=130) were examined for histopathology from two ART groups: *stable* (n=53),
64 who initiated ART before conception and *initiating* (n=77), who started ART during
65 pregnancy (median [IQR] 15 weeks gestation [11-18]). Using binomial regression we
66 quantified associations between ART initiation timing with placental histopathology and
67 pregnancy outcomes.

68

69 **Results:**

70 One-third of all placentas were <10th percentile weight-for-gestation and there was no
71 significant difference between ART groups. Placental diameter, thickness, cord insertion
72 position and fetal-placental weight ratio were also similar by group. However, placentas
73 from the *stable* group showed increased maternal vascular malperfusion (MVM) (39.6% vs
74 19.4%), and decreased weight (392g vs 422g, p=0.09). MVM risk was twice as high (RR 2.03
75 [95% CI: 1.16 - 3.57]; p=0.01) in the stable group; the increased risk remaining significant
76 when adjusting for maternal age (RR 2.04 [95% CI: 1.12 - 3.72]; p=0.02). Furthermore, MVM
77 was significantly associated with pre-term delivery (PTD) and low birth weight (LBW)
78 (p=0.002 and p<0.0001, respectively).

79

80 **Conclusion:**

81 Preconception initiation of ART was associated with an increased MVM risk, and may
82 contribute to placental dysfunction. The association between MVM with PTD and LBW
83 suggests that a placenta-mediated mechanism likely links the putative association between
84 long-term use of ART and adverse birth outcomes.

85

86 **Keywords:** HIV, placenta pathology, timing of ART initiation, pre-term delivery, small for
87 gestational age

88

89

90 Introduction

91 Antiretroviral treatment (ART) during pregnancy is not only of benefit for both the mother
92 and infant, substantially decreasing MTCT, but is also proven to be most effective in
93 reducing maternal and child mortality.^[1,2] Like many other countries, South Africa has now
94 fully adopted universal ART for life for all HIV-positive women upon diagnosis, including
95 pregnant women.^[3] However, the extensive rollout and uptake of ART from before or early
96 pregnancy has led to a rapid rise in fetal exposure to ART; where such *in-utero* drug
97 exposure has been associated with increased risk of adverse birth outcomes: including
98 preterm delivery (PTD)^[4-6], low birth weight (LBW)^[7] and small-for-gestational age (SGA)
99 infants^[4,8].

100

101 HIV infection in pregnancy, even in the absence of ART, has been associated with an
102 increased risk of adverse birth outcomes which is thought to be through inflammation-
103 mediated disruption of placental development and function^[9,10]. How maternal HIV
104 infection impacts placental structure and function is thus important to consider as it can
105 affect both maternal health, as seen in eclampsia^[11], and fetal health, as seen with PTD and
106 SGA^[9,12-14]. Uncharacteristic placental shapes and sizes may indicate decreased placental
107 efficiency, and maternal supply-line deprivation^[15,16]. Histologic chorioamnionitis reflects
108 maternal and fetal inflammatory responses to ascending infection^[17,18], and is a major cause
109 of spontaneous PTD^[19-21]. Despite recognition of the importance of the placenta in adverse
110 birth outcomes, there is scant data on the impact of *in-utero* ART exposure on placental
111 development and pathology, and subsequent adverse birth outcomes.

112

113 Within a large cohort of HIV-positive women, we set out to systematically examine the
114 histopathology of placentas collected at delivery from HIV-positive women initiating ART
115 before or during pregnancy, to inform understanding of the impact of ART initiation timing
116 on placental pathology. We conjectured that initiation of ART during pregnancy would result
117 in greater inflammation-linked placental pathology than ART initiated before pregnancy.

118

119 Methods

120 We performed a nested sub-study in the Prematurity Immunology in HIV-infected Mothers
121 and their infants Study (PIMS) cohort in Cape Town, South Africa^[22]. PIMS was a prospective
122 cohort study investigating the association between ART use and adverse birth outcomes, in
123 particular PTD, SGA and LBW^[22]. HIV-positive pregnant women aged ≥ 18 years seeking
124 antenatal care (ANC) services at the Gugulethu Midwife Obstetric Unit (MOU) were
125 recruited between April 2015 and October 2016, at ≤ 24 weeks gestation. Whole placentas
126 were collected at delivery and only those graded as good quality (grades 1-3)^[23] were
127 processed within 24 hours. Included were women who initiated ART before pregnancy
128 (stable group), or during pregnancy (initiating group). ART regimens consisted
129 predominately of tenofovir (TDF) + lamivudine (3TC)/emtricitabine (FTC) + efavirenz
130 (EFV)^[22].

131

132 *Ethical considerations*

133 The PIMS study protocol, informed consent forms and all data collection tools were
134 approved by the University of Cape Town's, Faculty of Health Sciences Human Research

135 Ethics Committee (UCT FHS-HREC) (HREC 739/2014) and the University of Southampton
136 Faculty of Medicine Ethics Committee on (12542 PIMS). Written informed consent was
137 obtained from all study participants, including placenta collection for the nested cohort.

138

139 *Data collection*

140 At first ANC visit, gestational age (GA) was determined by ultrasound scan (USS) by a
141 research sonographer using a standardized assessment protocol. Obstetric outcomes,
142 including date of delivery and birthweight, were obtained from clinical records. Maternal
143 CD4 and viral load measurements were obtained from hospital records at the time closest
144 to the first ANC visit. Body Mass Index (BMI) was calculated from weight and height
145 measurements; blood pressure were measured at the first ANC visit (baseline) and during
146 follow-up.

147

148 *Placenta collection and processing*

149 Whole placentas were collected at delivery and fixed in 10% buffered formalin. Placental
150 histopathological examination were performed in the Department of Pathology, Red Cross
151 Memorial Children's Hospital, Cape Town, South Africa. Specimens were examined from the
152 umbilical cord, membranes and placental disk and scored following the Amsterdam
153 Placental Workshop Group Consensus Statement^[24]. Briefly, four blocks were prepared from
154 each placenta, one block included a roll of the extraplacental membranes and two cross
155 sections of the umbilical cord, one from the placental insertion, and one close to the fetal
156 end. In addition, three blocks each contained a full-thickness section of the placenta
157 parenchyma, one from a visibly abnormal area if present and two sections from
158 macroscopically normal tissue including one from the cord insertion. The tissue sections
159 were 3-5µm thick and were cut and stained with hematoxylin and eosin for histological
160 examination. Macroscopic and microscopic features were combined to report placenta
161 pathology. For the sake of pathology scoring rigour, sections were also assessed in the
162 Department of Histopathology, Sheffield Children Hospital NHS Foundation Trust, Sheffield,
163 UK.

164

165 *Variables of interest*

166 Placenta pathology was based on placenta weight-for-gestational age, fetal-placental weight
167 ratio and features of placenta pathology. All placenta weights were reported as trimmed
168 weights, after removal of umbilical cords and membranes. Placenta weight percentiles by
169 gestational age and fetal-placenta ratios were categorized as small (<10th), appropriate (10-
170 90th) and large (>90th) for gestational age.^[25] Microscopically, the placenta was examined for
171 features of meconium exposure, based on the presence and amount of meconium-laden
172 macrophages in the placental membranes, with some cases showing features of prolonged
173 exposure characterized by meconium deep in the chorionic plate and umbilical cord;
174 amnion degeneration and chorion vascular muscle necrosis^[26]. Histologic chorioamnionitis
175 was defined as the presence of acute inflammation in the placenta, with or without a fetal
176 inflammatory response^[27,28]. Maternal vascular malperfusion (MVM) was defined as a
177 constellation of macroscopic and histologic features representing a pattern of injury in the
178 placenta as a result of maternal vascular abnormalities. The presence of decidual
179 vasculopathy was indicative of maternal vascular malperfusion. In the absence of decidual

180 vasculopathy, MVM was indicated by a small placenta for gestational age accompanied by
181 at least two villous changes (villous infarct, retroplacental haematoma, accelerated villous
182 maturation or distal villous hypoplasia). In the case of normal placenta weights for
183 gestational age, at least 3-4 villous features were noted to be placed in the category of
184 MVM.^[24,29,30] Decidual arteriopathy was defined as abnormal or incomplete remodelling of
185 decidual spiral arterioles resulting in fibrinoid necrotic lesions^[24,29,30]. Chronic deciduitis was
186 defined as abnormal infiltration of lymphocytes and plasma cells in the decidua^[24,31].
187 Placenta disk dimensions were recorded as maximum linear dimension (*length*), greatest
188 dimension of the axis perpendicular to the *length* (*width*) and the thickness. Cord insertion
189 referred to site of insertion on the placenta in relation to the margin of the placenta
190 classified as central, off-centre and marginal based on the distance from the margin.

191

192 Secondary outcomes included PTD, SGA and LBW. PTD was defined as delivery at <37
193 weeks' GA^[32]. Birthweight was categorized as low (LBW, <2500g), normal (NBW, 2500-
194 4000g) and high (HBW, >4000g)^[33]. Size for gestational age, based on gender-specific
195 INTERGROWTH-21st project standards, was defined as small for gestational age (SGA) for
196 infants with birthweight <10th percentile for gestational age, appropriate for gestational age
197 (AGA) for those between 10-90th percentile and large for gestational age (LGA) for those
198 >90th percentiles^[34].

199

200 *Statistical analysis*

201 Statistical analyses were performed using STATA version 12.0 (Stata Corporation, College
202 Station, Texas, USA) and R. Analyses focused on placenta pathology outcomes by ART
203 initiation before or during pregnancy. The impact of ART timing on features of placental
204 pathology was summarized using an Alluvial plot generated using the *ggalluvial* package in
205 R^[35]. Secondary analyses focused on birth outcomes (PTD, LBW and SGA) related to features
206 of placenta pathology. In bivariable analyses, proportions were compared using chi-
207 squared/Fishers exact test and rank-sum tests. Associations between baseline
208 characteristics and placenta pathology outcomes (small placental weight for GA, MVM and
209 chorioamnionitis) were assessed using binomial regression. Results were presented as risk
210 ratios (RR) with 95% confidence intervals (CI) generated using the forestplot package in R (R
211 package version 1.9)^[36]. For secondary analyses of birth outcomes, given the limited sample
212 size, only bivariate associations were assessed. As placenta weight and MVM abnormalities
213 were likely to originate in early gestation, we explored associations between timing of ART
214 initiation and the placenta pathologies. For MVM, as advanced maternal age has been
215 shown to increase the risk of placental dysfunction,^[37] we applied a multivariable regression
216 model to adjust for maternal age differences recorded at booking between ART groups. To
217 assess potential risk factors for PTD, SGA and LBW we compared differences between
218 groups using the χ^2 test or Fisher's exact test. Missing values were excluded from these
219 analyses.

220

221

222

223

224

225 **Results**

226 A total of 130 placentas were examined: 53 (40.8%) from the stable group and 77 (59.2%)
227 from the initiating group of women. Maternal and obstetric characteristics are summarised
228 in Table 1.

229

230 *Maternal characteristics*

231 Women in the stable group were older (median 33 years, IQR 28-37) than initiating women
232 (median 28, IQR 25-32). Median GA at first ANC visit was 15 weeks (IQR 11-18), with no
233 differences by ART initiation timing group (Table 1). Overall, 119 (91.5%), women were on a
234 fixed dose regimen of Tenofovir (TDF) + Lamivudine (3TC) + Efavirenz (EFV), 2 (1.5%) were
235 on Zidovudine (AZT) + Lamivudine (3TC) + Nevirapine (NVP), 6 (4.6%) were on AZT +
236 Emtricitabine or Lamivudine (XTC) + EFV with no difference between the groups; only 3
237 (2.3%; all in the *stable* group) were on a protease inhibitor (PI)-based regimen. Stable
238 women had significantly higher median CD4 T cell counts at enrolment (455 cells/ml, IQR
239 381 - 602) than initiating women (369.5 cells/ml, IQR 251 - 534.5). Most women (78.4%)
240 were overweight or obese, not significantly different by ART group. Initiating women were
241 more likely to be pre-hypertensive than stable women (28.6% vs 11.3%). Alcohol was the
242 most used substance, with 22% of women reporting alcohol use < 30 days prior to first ANC
243 visit (Supp. Table 1). There was no difference in smoking or recreational drug use between
244 the two groups.

245

246 *Infant characteristics*

247 Of the 130 live singleton births, 58 (44.6%) were female and 72 (55.3%) male (Table 2), with
248 no sex difference by ART timing group. Overall, median gestation at delivery was 39 weeks
249 (IQR 38 - 40), and PTD incidence was low (6.9%) with no difference by timing of ART
250 initiation. While median birthweight was also similar between ART groups, there was a
251 tendency towards differences in the percentage of LBW (11.3% vs 6.5%) and HBW (1.9% vs
252 9.1%) deliveries in the stable and initiating group respectively; but not reaching statistical
253 significance. The tendency towards increased >4000g macrosomia births in the ART
254 initiation during pregnancy group was not associated with birth complications. Differences
255 were also observed in size for gestational age, where 12 (9.2%) infants were SGA overall,
256 with 8 (15.1%) in the stable and 4 (5.2%) in the initiating group.

257

258 *Placental Pathology.*

259 Table 3 shows placenta characteristics and pathology stratified by timing of ART initiation,
260 and Figures 1A-D show representative images of some of the features of placenta pathology
261 included in our analysis: chorioamnionitis (Figure 1A), neutrophilic infiltrate involving the
262 cord vein representing a fetal response (Figure 1B) and decidual artery atherosclerosis (Figure 1C).
263 Median placenta weight was 412g (IQR 350 - 480) overall, 393g in the stable and 422g in the
264 initiating group ($p=0.09$). Overall, 43 (33%) placentas were <10th percentile weight-for-
265 gestation, with no significant differences between ART groups; placental diameter, thickness
266 or cord insertion were also similar in each group as was the Fetal-Placental weight ratio.
267 Meconium exposure was identified in 22 (19.2%) cases, similar in both ART groups.
268 Chorioamnionitis was present in 19 (14.6%) cases, with a higher percentage in initiating
269 than in stable women, but not reaching statistical significance. MVM was significantly higher

270 in placentas from stable than initiating women (39.2% vs 19.5%; $p=0.01$). There were no
271 cases of chronic basal villitis, chronic chorioamnionitis, eosinophilic/T-cell vasculitis or
272 chronic histiocytic intervillitis. Chronic decidual perivasculitis was included in cases of
273 chronic deciduitis.

274

275 To discount selection bias due to collection of placentas from a sub-group of women, we
276 compared maternal characteristics in “no-placenta” versus “placenta” collection for each
277 ART group (Supp Table 2) in the larger PIMS cohort. Importantly, blood pressure was no
278 different in the wider cohort ($n=421$), irrespective of ART group, indicating that the
279 observed MVM in the smaller placenta stable group was not due to any bias in a pre- or
280 hypertensive state, which could have impacted on our observations.

281

282 Figures 2A-C shows the relative risk of placenta pathology by ART group and maternal
283 characteristics. In unadjusted models, women who were overweight (RR 0.46 [95% CI: 0.27-
284 081]; $p=0.007$) and obese (RR 0.37 [95% CI: 0.21 - 0.64]; $p<0.0001$) were less likely to have
285 small-for-gestational age placentas (Figure 2A). None of the variables explored were
286 associated with significant risk of chorioamnionitis (Figure 2B). The risk of MVM (Figure 2C)
287 was twice as high (RR 2.03 [95% CI: 1.16 - 3.57]; $p=0.01$) in stable than in initiating women
288 and remained significant when adjusting for maternal age (RR 2.04 [95% CI: 1.12 - 3.72];
289 $p=0.02$). The impact of ART timing on placental pathology is summarized in the Alluvial plot
290 in Figure 2D, emphasizing the occurrence of MVM in women initiating ART pre-conception.
291 The association between placenta pathology and PTD, SGA and LBW (Table 4) was
292 significant for MVM (PTD: $p=0.002$; LBW: $p<0.0001$), and borderline for SGA ($p=0.09$). In
293 addition, SGA deliveries were more likely to present with meconium exposure, indicating
294 fetal distress ($p=0.01$).

295

296 Discussion

297 We examined the association between timing of ART initiation in HIV-positive women and
298 placental pathology, and with subsequent birth outcomes. Placentas from women who had
299 initiated ART pre-conception, but not those initiating during pregnancy, showed significantly
300 increased maternal vascular malperfusion (MVM). There was no evidence for overt
301 maternal or fetal inflammation in either ART group, contrary to our initial supposition. As
302 MVM was significantly associated with PTD and LBW, our findings suggest that associations
303 between ART and adverse birth outcomes may be placenta-mediated, especially so for
304 women initiating ART before pregnancy, where there is antiretroviral drug exposure during
305 placental implantation and development.

306

307 Previous studies of HIV-positive women initiating ART before or during pregnancy have
308 focused on quantifying risk of PTD^[1,4,7,38-41], SGA^[4,7,41,42], LBW^[7,38,39], stillbirth^[43] and/or
309 neonatal death^[42], virologic failure^[44], MTCT^[45] maternal plasma angiogenic factors^[46], and
310 maternal virologic and immunologic responses^[47]. This is the first study to investigate
311 placenta pathology in association with timing of ART initiation. In our study, women who
312 initiated ART before pregnancy were significantly older, which could have accounted for the
313 observed MVM. However, when we controlled for maternal age, MVM remained

314 significantly associated with pre-conception ART initiation. Thus, ART initiation pre-
315 conception is a substantial risk factor for MVM.

316

317 MVM represents a pattern of placental injury which affects the maternal vasculature and
318 circulation and often associates with significantly increased risk of adverse effects to the
319 fetus^[24,29]. We found that the high incidence of MVM in our study was consistent with
320 findings from a previous HIV-positive pregnancy cohort^[48], albeit MVM in our study
321 associated with PTD and LBW. We posit that prolonged ART, initiated pre-conception, is
322 likely resulting in perturbed placental development and poor perfusion and function giving
323 rise to adverse birth outcomes. Interestingly, there was a non-significantly higher proportion
324 of macrosomia births in the women initiating ART during pregnancy, perhaps reflecting the
325 higher proportions of mothers with a high BMI in this group. Although macrosomia has been
326 associated with shoulder dystocia, neonatal and maternal trauma,^[49] hypoglycaemia,^[50] this
327 was not observed in our larger PIMS cohort when we stratified the groups by time of ART
328 initiation (before versus during pregnancy).^[51]

329

330 Although HIV-positive individuals on ART have been shown to have a high prevalence of
331 hypertension^[52], women initiating ART prior to pregnancy in our study were less likely to be
332 pre- or hypertensive than those initiating during pregnancy. Additionally, we did not find
333 any associations between MVM and hypertensive disorders in our cohort, although
334 hypertensive disorders of pregnancy, including preeclampsia and chronic hypertension, are
335 the classical maternal clinical features associated with an increased risk of MVM^[53-55]. Our
336 data suggests that placental research should form an integral part when exploring
337 interventions aimed at mitigating adverse birth outcome associated with ART use in
338 pregnancy.

339

340 The impact of ART exposure on the placenta is under-explored and we speculate that
341 exposure of ART before or during early pregnancy results in systemic maternal inflammation
342 that may disrupt vasculogenesis and angiogenesis^[9]. In our cohort, the underlying
343 mechanism leading to this disruption may be dysregulation of pro-angiogenic mediators
344 including placental growth factor (PlGF), soluble endoglin (sEng) and angiotensin-1 (Ang-1).
345 Although data is scarce, previous findings demonstrate that maternal HIV infection and ART
346 exposure is associated with an altered pro-angiogenic state; including lower PlGF, higher
347 sEng, decreased Ang-2 and increased Ang-1^[10,56-58]. Based on previous evidence linking ART
348 with dysregulated angiogenesis and compromised placental vascular development in early
349 pregnancy, we postulate that the higher incidence of MVM in women who initiate ART
350 before pregnancy was likely due to ART-associated shifts towards an anti-angiogenic state
351^[59]. This may account for the increased MVM in women initiating ART pre-conception;
352 suggestive that ART exposure could have detrimental effects on placental development
353 characterized by altered uterine and intervillous blood flow dynamics.

354

355 Of potential importance for the interpretation of our findings was that over three quarters
356 of the women were either overweight or obese at first antenatal visit; increased BMI at that
357 time was associated with a decreased likelihood of a small placenta at delivery. We did not
358 have reliable assessments of BMI pre-pregnancy, but in other studies^[53,54] elevated pre-

359 pregnancy BMI has been associated with large for gestational age placentas and altered
360 placental metabolic function. We recently showed from our larger PIMS cohort, maternal
361 obesity can increase the risk of having high birthweight and large for gestational age infants
362 and that incremental gestational weight gain increased the risk of having a spontaneous
363 preterm delivery.^[55] Beyond the effect of high BMI during pregnancy on the placenta, it is
364 also associated with childhood obesity and cardiovascular diseases in later life.^[56,57]
365 Although our study was limited in this regard, interventions targeting the risks associated
366 with the high rate of obesity among women of child-bearing age or during gestation should
367 not be ignored

368

369 The main strength of our study is the cohort design allowing us to compare two groups of
370 pregnant women receiving the same NNRTI-based ART regimen and enrolled early in
371 gestation, with data collected and samples investigated according to a strict protocol.
372 Additional strength lies in the ultrasound-based gestational age assessment, leading to
373 accurate PTD determination. Limitations include the non-random nature of the selection of
374 the nested cohort, giving rise to potential differences in maternal characteristics between
375 ART groups or placentas collected. However, we doubt this would affect our findings as: a)
376 there was no significant difference in maternal characteristics when we compared the
377 placenta sub-group with the overall cohort and b) the rates of stillbirths and miscarriages
378 were less than 5% in the larger PIMS cohort, with no differences in pregnancy loss when
379 groups were stratified by time of ART initiation. All staff in the three clinics where women
380 delivered were trained in placenta collection (with no exclusion criteria), and placentas were
381 transported to the laboratory for processing immediately.

382

383 In conclusion, we show women receiving ART pre-conception were at increased risk of
384 MVM, suggestive of placental dysfunction. In turn, the association between MVM with PTD
385 and LBW suggests that a placenta-mediated mechanism links the putative association
386 between ART and adverse birth outcomes. Our results further intimate that monitoring
387 placental function in women who initiated ART prior to conception is warranted and that
388 adjunctive therapies that target placental insufficiency in these women can alleviate the
389 burden of adverse birth outcomes.

390

391 **ACKNOWLEDGEMENTS**

392 We thank all the study participants in this study; and all the members of the PIMS study. We
393 also wish to thank Sue Ford, Colin Newel for data management and Michael Zulu for
394 specimen processing.

395

396 **Author contributions**

397 Clive M Gray, Marie-Louise Newell, Thokozile R Malaba, Landon Myer: Conceptualization
398 and design of the study

399 Thokozile R Malaba, Hlengiwe P Madlala: study conduct, data collection and specimen
400 collection

401 Nadia M Ikumi: Laboratory and sample preparation

402 Komala Pillay, Marta Cohen: Histopathology scoring and interpretation

403 Nadia M Ikumi, Thokozile R Malaba: Statistical analysis

404 Nadia M Ikumi, Thokozile R Malaba, Clive Gray, Hlengiwe P Madlala, Marie-Louise Newell,
405 Mushi Matjila, Dilly Anumba, Landon Myer: Writing the manuscript, review and editing

406

407

408 REFERENCES

- 409 1. Aniji CD, Towobola OA, Hoque ME, Mashamba TJ, Monokoane S. Impact of
410 antiretroviral therapy on pregnancy outcomes. *South Afr J HIV Med* [Internet]. 2013
411 Nov 22;14(4):176. Available from:
412 <http://www.sajhivmed.org.za/index.php/sajhivmed/article/view/834>
- 413 2. Fowler MG, Qin M, Fiscus SA, Currier JS, Flynn PM, Chipato T, et al. Benefits and Risks
414 of Antiretroviral Therapy for Perinatal HIV Prevention. *N Engl J Med* [Internet].
415 2016;375(18):1726–37. Available from:
416 <http://www.ncbi.nlm.nih.gov/pubmed/27806243>
- 417 3. World Health Organization. Programmatic Update Use of Antiretroviral Drugs for
418 Treating Pregnant Women and Preventing HIV Infection in Infants Executive
419 Summary. Vol. 45, World Health Organization. Geneva; 2012.
- 420 4. Chen JY, Ribaud HJ, Souda S, Parekh N, Ogwu A, Lockman S, et al. Highly active
421 antiretroviral therapy and adverse birth outcomes among HIV-infected women in
422 Botswana. *J Infect Dis* [Internet]. 2012 Dec 1;206(11):1695–705. Available from:
423 <http://www.ncbi.nlm.nih.gov/pubmed/23066160>
- 424 5. Short C-ES, Douglas M, Smith JH, Taylor GP. Preterm delivery risk in women initiating
425 antiretroviral therapy to prevent HIV mother-to-child transmission. *HIV Med*
426 [Internet]. 2014 Apr;15(4):233–8. Available from:
427 <http://www.ncbi.nlm.nih.gov/pubmed/24025074>
- 428 6. Thorne C, Patel D, Newell M-L. Increased risk of adverse pregnancy outcomes in HIV-
429 infected women treated with highly active antiretroviral therapy in Europe. *AIDS*
430 [Internet]. 2004 Nov;18(17):2337–9. Available from:
431 [http://content.wkhealth.com/linkback/openurl?sid=WKPTLP:landingpage&an=00002](http://content.wkhealth.com/linkback/openurl?sid=WKPTLP:landingpage&an=00002030-200411190-00019)
432 [030-200411190-00019](http://content.wkhealth.com/linkback/openurl?sid=WKPTLP:landingpage&an=00002030-200411190-00019)
- 433 7. Li N, Sando MM, Spiegelman D, Hertzmark E, Liu E, Sando D, et al. Antiretroviral
434 Therapy in Relation to Birth Outcomes among HIV-infected Women: A Cohort Study. *J*
435 *Infect Dis* [Internet]. 2016 Apr 1;213(7):1057–64. Available from:
436 <http://www.ncbi.nlm.nih.gov/pubmed/26265780>
- 437 8. Zash R, Souda S, Chen JY, Binda K, Dryden-Peterson S, Lockman S, et al. Reassuring
438 Birth Outcomes With Tenofovir/Emtricitabine/Efavirenz Used for Prevention of
439 Mother-to-Child Transmission of HIV in Botswana. *J Acquir Immune Defic Syndr*
440 [Internet]. 2016 Apr 1;71(4):428–36. Available from:
441 <http://www.ncbi.nlm.nih.gov/pubmed/26379069>
- 442 9. Weckman AM, Ngai M, Wright J, McDonald CR, Kain KC. The Impact of Infection in
443 Pregnancy on Placental Vascular Development and Adverse Birth Outcomes. *Front*
444 *Microbiol* [Internet]. 2019 Aug 22;10. Available from:
445 <https://www.frontiersin.org/article/10.3389/fmicb.2019.01924/full>
- 446 10. Conroy AL, McDonald CR, Gamble JL, Olwoch P, Natureeba P, Cohan D, et al. Altered
447 angiogenesis as a common mechanism underlying preterm birth, small for gestational
448 age, and stillbirth in women living with HIV. *Am J Obstet Gynecol* [Internet]. 2017
449 Dec;217(6):684.e1-684.e17. Available from:
450 <https://linkinghub.elsevier.com/retrieve/pii/S0002937817311857>
- 451 11. Fisher SJ. Why is placentation abnormal in preeclampsia? *Am J Obstet Gynecol*
452 [Internet]. 2015 Oct;213(4):S115–22. Available from:
453 <https://linkinghub.elsevier.com/retrieve/pii/S0002937815009126>
- 454 12. Romero R, Kusanovic JP, Chaiworapongsa T, Hassan SS. Placental bed disorders in
455 preterm labor, preterm PROM, spontaneous abortion and abruptio placentae. *Best*
456 *Pract Res Clin Obstet Gynaecol* [Internet]. 2011 Jun;25(3):313–27. Available from:
457 <http://www.ncbi.nlm.nih.gov/pubmed/21388889>
- 458 13. Doyle RM, Alber DG, Jones HE, Harris K, Fitzgerald F, Peebles D, et al. Term and
459 preterm labour are associated with distinct microbial community structures in

- 460 placental membranes which are independent of mode of delivery. Placenta
461 [Internet]. 2014 Dec;35(12):1099–101. Available from:
462 <https://linkinghub.elsevier.com/retrieve/pii/S0143400414008194>
- 463 14. Morgan T. Role of the Placenta in Preterm Birth: A Review. *Am J Perinatol* [Internet].
464 2016 Jan 5;33(03):258–66. Available from: [http://www.thieme-](http://www.thieme-connect.de/DOI/DOI?10.1055/s-0035-1570379)
465 [connect.de/DOI/DOI?10.1055/s-0035-1570379](http://www.thieme-connect.de/DOI/DOI?10.1055/s-0035-1570379)
- 466 15. Salafia CM, Yampolsky M, Misra DP, Shlakhter O, Haas D, Eucker B, et al. Placental
467 surface shape, function, and effects of maternal and fetal vascular pathology.
468 *Placenta* [Internet]. 2010 Nov;31(11):958–62. Available from:
469 <https://linkinghub.elsevier.com/retrieve/pii/S0143400410003395>
- 470 16. Freedman AA, Hogue CJ, Marsit CJ, Rajakumar A, Smith AK, Goldenberg RL, et al.
471 Associations Between the Features of Gross Placental Morphology and Birthweight.
472 *Pediatr Dev Pathol* [Internet]. 2019 May 16;22(3):194–204. Available from:
473 <http://journals.sagepub.com/doi/10.1177/1093526618789310>
- 474 17. Redline RW. Inflammatory response in acute chorioamnionitis. *Semin Fetal Neonatal*
475 *Med* [Internet]. 2012 Feb;17(1):20–5. Available from:
476 <https://linkinghub.elsevier.com/retrieve/pii/S1744165X11000916>
- 477 18. Ategeka J, Wasswa R, Olwoch P, Kakuru A, Natureeba P, Muehlenbachs A, et al. The
478 prevalence of histologic acute chorioamnionitis among HIV infected pregnant women
479 in Uganda and its association with adverse birth outcomes. Robboy SJ, editor. *PLoS*
480 *One* [Internet]. 2019 Apr 11;14(4):e0215058. Available from:
481 <http://dx.plos.org/10.1371/journal.pone.0215058>
- 482 19. Galinsky R, Polglase GR, Hooper SB, Black MJ, Moss TJM. The Consequences of
483 Chorioamnionitis: Preterm Birth and Effects on Development. *J Pregnancy* [Internet].
484 2013;2013:1–11. Available from: <http://www.hindawi.com/journals/jp/2013/412831/>
- 485 20. Prince AL, Ma J, Kannan PS, Alvarez M, Gisslen T, Harris RA, et al. The placental
486 membrane microbiome is altered among subjects with spontaneous preterm birth
487 with and without chorioamnionitis. *Am J Obstet Gynecol* [Internet]. 2016
488 May;214(5):627.e1-627.e16. Available from:
489 <https://linkinghub.elsevier.com/retrieve/pii/S0002937816003057>
- 490 21. Wortham JM, Hansen NI, Schrag SJ, Hale E, Van Meurs K, Sánchez PJ, et al.
491 Chorioamnionitis and Culture-Confirmed, Early-Onset Neonatal Infections. *Pediatrics*
492 [Internet]. 2016 Jan;137(1):e20152323. Available from:
493 <http://pediatrics.aappublications.org/lookup/doi/10.1542/peds.2015-2323>
- 494 22. Malaba TR, Gray CM, Myer L, Newell M-L. Cohort Profile: Prematurity Immunology in
495 HIV-infected Mothers and their infants Study (PIMS). *medRxiv* [Internet].
496 2020;2020.03.18.20033654. Available from:
497 <http://medrxiv.org/content/early/2020/03/23/2020.03.18.20033654.abstract>
- 498 23. Malaba TR, Gray CM, Myer L, Newell M-L. Cohort Profile: Prematurity Immunology in
499 HIV-infected Mothers and their infants Study (PIMS). *medRxiv* [Internet]. 2020 Jan
500 1;2020.03.18.20033654. Available from:
501 <http://medrxiv.org/content/early/2020/03/23/2020.03.18.20033654.abstract>
- 502 24. Khong TY, Mooney EE, Ariel I, Balmus NCM, Boyd TK, Brundler M-A, et al. Sampling
503 and Definitions of Placental Lesions: Amsterdam Placental Workshop Group
504 Consensus Statement. *Arch Pathol Lab Med* [Internet]. 2016 Jul;140(7):698–713.
505 Available from: [http://www.archivesofpathology.org/doi/10.5858/arpa.2015-0225-](http://www.archivesofpathology.org/doi/10.5858/arpa.2015-0225-CC)
506 [CC](http://www.archivesofpathology.org/doi/10.5858/arpa.2015-0225-CC)
- 507 25. Kraus FT. *Placenta Pathology*. American Registry of Pathology, editor. American
508 Registry of Pathology; 2004.
- 509 26. Kim B, Oh S, Kim J-S. Placental Lesions in Meconium Aspiration Syndrome. *J Pathol*
510 *Transl Med* [Internet]. 2017 Sep 15;51(5):488–98. Available from:
511 <http://jpatholm.org/journal/view.php?doi=10.4132/jptm.2017.07.20>

- 512 27. Kallapur S, Presicce P, Rueda C, Jobe A, Chougnet C. Fetal Immune Response to
513 Chorioamnionitis. *Semin Reprod Med* [Internet]. 2014 Jan 3;32(01):056–67. Available
514 from: <http://www.thieme-connect.de/DOI/DOI?10.1055/s-0033-1361823>
- 515 28. Kim CJ, Romero R, Chaemsaitong P, Chaiyasit N, Yoon BH, Kim YM. Acute
516 chorioamnionitis and funisitis: definition, pathologic features, and clinical
517 significance. *Am J Obstet Gynecol* [Internet]. 2015 Oct;213(4):S29–52. Available from:
518 <https://linkinghub.elsevier.com/retrieve/pii/S0002937815009102>
- 519 29. Ernst LM. Maternal vascular malperfusion of the placental bed. *APMIS* [Internet].
520 2018 Jul;126(7):551–60. Available from: <http://doi.wiley.com/10.1111/apm.12833>
- 521 30. Heider A. Fetal Vascular Malperfusion. *Arch Pathol Lab Med* [Internet]. 2017
522 Nov;141(11):1484–9. Available from:
523 <http://www.archivesofpathology.org/doi/10.5858/arpa.2017-0212-RA>
- 524 31. Ziadie M. Chronic deciduitis [Internet]. *PathologyOutlines.com* website. [cited 2020
525 Mar 30]. Available from:
526 <https://www.pathologyoutlines.com/topic/placentachronicdecid.html>
- 527 32. World Health Organization. Preterm Birth [Internet]. [cited 2019 Mar 30]. Available
528 from: <https://www.who.int/news-room/fact-sheets/detail/preterm-birth>
- 529 33. Ota E, Haruna M, Suzuki M, Anh DD, Tho LH, Tam NTT, et al. Maternal body mass
530 index and gestational weight gain and their association with perinatal outcomes in
531 Viet Nam. *Bull World Health Organ* [Internet]. 2011 Feb 1;89(2):127–36. Available
532 from: <http://www.who.int/bulletin/volumes/89/2/10-077982.pdf>
- 533 34. Papageorghiou AT, Kennedy SH, Salomon LJ, Altman DG, Ohuma EO, Stones W, et al.
534 The INTERGROWTH-21 st fetal growth standards: toward the global integration of
535 pregnancy and pediatric care. *Am J Obstet Gynecol* [Internet]. 2018 Feb;218(2):S630–
536 40. Available from: <https://linkinghub.elsevier.com/retrieve/pii/S0002937818300127>
- 537 35. Brunson JC. ggalluvial: Alluvial Plots in “ggplot2” [Internet]. 2020. Available from:
538 <https://cran.r-project.org/package=ggalluvial>
- 539 36. Gordon M, Lumley T. forestplot: Advanced Forest Plot Using “grid” Graphics. 2019.
- 540 37. Lean SC, Heazell AEP, Dilworth MR, Mills TA, Jones RL. Placental Dysfunction
541 Underlies Increased Risk of Fetal Growth Restriction and Stillbirth in Advanced
542 Maternal Age Women. *Sci Rep* [Internet]. 2017;7(1):9677. Available from:
543 <http://www.ncbi.nlm.nih.gov/pubmed/28852057>
- 544 38. Machado ES, Hofer CB, Costa TT, Nogueira SA, Oliveira RH, Abreu TF, et al. Pregnancy
545 outcome in women infected with HIV-1 receiving combination antiretroviral therapy
546 before versus after conception. *Sex Transm Infect* [Internet]. 2009 Apr;85(2):82–7.
547 Available from: <http://www.ncbi.nlm.nih.gov/pubmed/18987014>
- 548 39. Chetty T, Thorne C, Coutsooudis A. Preterm delivery and small-for-gestation outcomes
549 in HIV-infected pregnant women on antiretroviral therapy in rural South Africa:
550 Results from a cohort study, 2010-2015. *PLoS One* [Internet]. 2018;13(2):e0192805.
551 Available from: <http://www.ncbi.nlm.nih.gov/pubmed/29470508>
- 552 40. Stoner MCD, Cole SR, Price J, Winston J, Stringer JSA. Timing of Initiation of
553 Antiretroviral Therapy and Risk of Preterm Birth in Studies of HIV-infected Pregnant
554 Women: The Role of Selection Bias. *Epidemiology* [Internet]. 2018;29(2):224–9.
555 Available from: <http://www.ncbi.nlm.nih.gov/pubmed/29045283>
- 556 41. Malaba TR, Phillips T, Le Roux S, Brittain K, Zerbe A, Petro G, et al. Antiretroviral
557 therapy use during pregnancy and adverse birth outcomes in South African women.
558 *Int J Epidemiol* [Internet]. 2017 Oct 1;46(5):1678–89. Available from:
559 <https://academic.oup.com/ije/article/46/5/1678/4055952>
- 560 42. Santosa WB, Staines-Urias E, Tshivuila-Matala COO, Norris SA, Hemelaar J. Perinatal
561 outcomes associated with maternal HIV and antiretroviral therapy in pregnancies
562 with accurate gestational age in South Africa. *AIDS* [Internet]. 2019 Aug;33(10):1623–
563 33. Available from: <http://insights.ovid.com/crossref?an=00002030-201908010->

- 564 00010
- 565 43. Msukwa MT, Keiser O, Jahn A, van Oosterhout JJ, Edmonds A, Phiri N, et al. Timing of
566 combination antiretroviral therapy (cART) initiation is not associated with stillbirth
567 among HIV-infected pregnant women in Malawi. *Trop Med Int Health* [Internet].
568 2019 Jun;24(6):727–35. Available from:
569 <http://www.ncbi.nlm.nih.gov/pubmed/30891866>
- 570 44. Onoya D, Sineke T, Brennan AT, Long L, Fox MP. Timing of pregnancy, postpartum risk
571 of virologic failure and loss to follow-up among HIV-positive women. *AIDS* [Internet].
572 2017;31(11):1593–602. Available from:
573 <http://www.ncbi.nlm.nih.gov/pubmed/28463877>
- 574 45. Dinh T-H, Mushavi A, Shiraiishi RW, Tippet Barr B, Balachandra S, Shambira G, et al.
575 Impact of Timing of Antiretroviral Treatment and Birth Weight on Mother-to-Child
576 Human Immunodeficiency Virus Transmission: Findings From an 18-Month
577 Prospective Cohort of a Nationally Representative Sample of Mother–Infant Pairs
578 During the Transition Fro. *Clin Infect Dis* [Internet]. 2018 Feb 1;66(4):576–85.
579 Available from: <https://academic.oup.com/cid/article/66/4/576/4159392>
- 580 46. Djeha A, Girard S, Trottier H, Kakkar F, Soudeyans H, Boucher M, et al. No association
581 between early antiretroviral therapy during pregnancy and plasma levels of
582 angiogenic factors: a cohort study. *BMC Pregnancy Childbirth* [Internet]. 2019 Dec
583 9;19(1):482. Available from: <http://www.ncbi.nlm.nih.gov/pubmed/31815612>
- 584 47. Melekhin V V, Shepherd BE, Stinnette SE, Rebeiro PF, Barkanic G, Raffanti SP, et al.
585 Antiretroviral therapy initiation before, during, or after pregnancy in HIV-1-infected
586 women: maternal virologic, immunologic, and clinical response. *PLoS One* [Internet].
587 2009 Sep 9;4(9):e6961. Available from:
588 <http://www.ncbi.nlm.nih.gov/pubmed/19742315>
- 589 48. Kalk E, Schubert P, Bettinger JA, Cotton MF, Esser M, Slogrove A, et al. Placental
590 pathology in HIV infection at term: a comparison with HIV-uninfected women. *Trop*
591 *Med Int Health* [Internet]. 2017;22(5):604–13. Available from:
592 <http://www.ncbi.nlm.nih.gov/pubmed/28214384>
- 593 49. Pillai S, Cheyney M, Everson CL, Bovbjerg ML. Fetal macrosomia in home and birth
594 center births in the United States: Maternal, fetal, and newborn outcomes. *Birth*
595 [Internet]. 2020 Oct 15;birt.12506. Available from:
596 <https://onlinelibrary.wiley.com/doi/10.1111/birt.12506>
- 597 50. Bouvier D, Forest J-C, Dion-Buteau E, Bernard N, Bujold E, Pereira B, et al. Association
598 of Maternal Weight and Gestational Weight Gain with Maternal and Neonate
599 Outcomes: A Prospective Cohort Study. *J Clin Med* [Internet]. 2019 Nov
600 27;8(12):2074. Available from: <https://www.mdpi.com/2077-0383/8/12/2074>
- 601 51. Madlala HP, Malaba TR, Newell M, Myer L. Elevated body mass index during
602 pregnancy and gestational weight gain in HIV-infected and HIV-uninfected women in
603 Cape Town, South Africa: association with adverse birth outcomes. *Trop Med Int Heal*
604 [Internet]. 2020 Jun 23;25(6):702–13. Available from:
605 <https://onlinelibrary.wiley.com/doi/10.1111/tmi.13387>
- 606 52. Fahme SA, Bloomfield GS, Peck R. Hypertension in HIV-Infected Adults. *Hypertension*
607 [Internet]. 2018 Jul;72(1):44–55. Available from:
608 <https://linkinghub.elsevier.com/retrieve/pii/S1473309914708965>
- 609 53. Kovo M, Bar J, Schreiber L, Shargorodsky M. The relationship between hypertensive
610 disorders in pregnancy and placental maternal and fetal vascular circulation. *J Am Soc*
611 *Hypertens* [Internet]. 2017 Nov;11(11):724–9. Available from:
612 <https://linkinghub.elsevier.com/retrieve/pii/S1933171117303054>
- 613 54. Bustamante Helfrich B, Chilukuri N, He H, Cerda SR, Hong X, Wang G, et al. Maternal
614 vascular malperfusion of the placental bed associated with hypertensive disorders in
615 the Boston Birth Cohort. *Placenta* [Internet]. 2017 Apr;52:106–13. Available from:

- 616 <https://linkinghub.elsevier.com/retrieve/pii/S0143400417301595>
617 55. Naderi S, Tsai SA, Khandelwal A. Hypertensive Disorders of Pregnancy. *Curr*
618 *Atheroscler Rep* [Internet]. 2017 Mar 22;19(3):15. Available from:
619 <http://link.springer.com/10.1007/s11883-017-0648-z>
620 56. Govender N, Naicker T, Moodley J. Maternal imbalance between pro-angiogenic and
621 anti-angiogenic factors in HIV-infected women with pre-eclampsia. *Cardiovasc J Afr*
622 [Internet]. 2013 Jun;24(5):174–9. Available from:
623 <http://www.ncbi.nlm.nih.gov/pubmed/24217170>
624 57. Graham SM, Rajwans N, Jaoko W, Estambale BBA, McClelland RS, Overbaugh J, et al.
625 Endothelial activation biomarkers increase after HIV-1 acquisition. *AIDS* [Internet].
626 2013 Jul;27(11):1803–13. Available from:
627 [http://content.wkhealth.com/linkback/openurl?sid=WKPTLP:landingpage&an=00002](http://content.wkhealth.com/linkback/openurl?sid=WKPTLP:landingpage&an=00002030-201307170-00014)
628 [030-201307170-00014](http://content.wkhealth.com/linkback/openurl?sid=WKPTLP:landingpage&an=00002030-201307170-00014)
629 58. Graham SM, Rajwans N, Tapia KA, Jaoko W, Estambale BB, McClelland RS, et al. A
630 prospective study of endothelial activation biomarkers, including plasma
631 angiotensin-1 and angiotensin-2, in Kenyan women initiating antiretroviral therapy.
632 *BMC Infect Dis* [Internet]. 2013 Dec 4;13(1):263. Available from:
633 <https://bmcinfectdis.biomedcentral.com/articles/10.1186/1471-2334-13-263>
634 59. Mohammadi H, Papp E, Cahill L, Rennie M, Banko N, Pinnaduwa L, et al. HIV
635 antiretroviral exposure in pregnancy induces detrimental placenta vascular changes
636 that are rescued by progesterone supplementation. *Sci Rep* [Internet]. 2018 Dec
637 26;8(1):6552. Available from: <http://www.nature.com/articles/s41598-018-24680-w>
638
639

640 TABLES

641 Table 1: Maternal and obstetric characteristics of the pregnant women at enrolment.

	Total N=130	¹ ART Initiation before pregnancy N=53	ART Initiation during pregnancy N=77	p-Value
Age, years				<0.0001
≤24	24 (18.5)	5 (9.4)	19 (24.7)	
25-29	36 (27.7)	10 (18.9)	26 (33.8)	
30-34	37 (28.5)	14 (26.4)	23 (29.9)	
≥35	33 (25.4)	24 (45.3)	9 (11.7)	
Median (IQR)	31 (26 - 35)	33(28 - 37)	28 (25 - 32)	
Median Gestation at Enrolment	15 (11-18)	14 (11-18)	15 (11-18)	0.4
Gravidity				0.1
1	14 (10.8)	4 (7.5)	10 (13.0)	
2	50 (38.5)	16 (30.2)	34 (44.2)	
≥3	66 (50.8)	33 (62.3)	33 (42.9)	
Median (IQR)	3 (2-3)	3 (2-4)	2 (2-3)	
² Previous Preterm				1.0
Yes	7 (5.4)	4 (7.5)	3 (3.9)	
ART regimen				0.2
TDF-3TC-EFV	119 (91.5)	47 (88.7)	72 (93.5)	
AZT-3TC-NVP	2 (1.5)	1 (1.9)	1 (1.9)	
AZT-XTC-EFV	6 (4.6)	2 (3.8)	4 (5.2)	
PI-based regimen	3 (2.3)	3 (5.7)	0 (0)	
³ CD4 cell count, cells/ml				0.04
≤ 200	9 (6.9)	1 (1.9)	8 (10.4)	
201-350	32 (24.6)	8 (15.1)	24 (31.2)	
351-500	29 (22.3)	14 (26.4)	15 (19.5)	
>500	41 (31.5)	20 (37.7)	21 (27.3)	
Median (IQR)	416 (311 - 589)	455 (381 - 602)	369.5 (251 - 534.5)	
Missing	19 (14.6)	10 (18.9)	9 (11.7)	
³ Viral load, copies/ml				0.1
<400	84 (64.6)	45 (84.9)	39 (50.6)	
401-1000	2 (1.5)	0 (0)	2 (2.6)	
>1000	7 (5.4)	2 (3.8)	5 (6.5)	
Median (IQR)	20 (20 - 27)	20 (20 - 27)	20 (20 - 34)	
Missing	37 (28.5)	6 (11.3)	31 (40.3)	
⁴ Body Mass Index, kg/m ²				0.5
Normal (18.5-24.9)	27 (20.7)	12 (22.6)	15 (19.5)	
Overweight (25.0-29.9)	41 (31.5)	18 (34.0)	23 (29.9)	
Obese (>30.0)	61 (46.9)	22 (41.5)	39 (50.6)	
Median (IQR)	29.45 (25.5 - 33.6)	29.2 (25.8 - 32.2)	30 (25.4 - 35.2)	
Missing	1 (0.8)	1 (1.9)	0 (0)	
Blood Pressure, Enrolment (mmHG)				0.03
Normal (Sys <120 and Dia <80)	99 (76.1)	46 (86.8)	53 (68.8)	
Prehypertensive (Sys 120-139 or Dia 80-89)	28 (21.5)	6 (11.3)	22 (28.6)	
Hypertensive (Sys >140 or Dia >90)	3 (2.3)	1 (1.9)	2 (2.6)	

643 ¹Differences between the two groups were assessed using a two-sample t-test or Wilcoxon rank-sum test
644 depending on the distribution for numerical data and the χ^2 test or Fisher's exact test for categorical data.
645 ²Among women with a previous pregnancy
646 ³CD4 and viral load results abstracted from routine records and are the nearest in time to the first ANC visit.
647 ⁴At enrolment or first ANC
648

649 **Table 2: Infant characteristics**

	Total N=130	ART Initiation before pregnancy N=53	ART Initiation during pregnancy N=77	p- Value
Sex				0.6
Female	58 (44.6)	25 (47.2)	33 (42.9)	
Male	72 (55.4)	28 (52.8)	44 (57.1)	
Median Delivery Gestation (completed weeks)	39 (38 - 40)	39 (38 - 39)	39 (38 - 40)	0.1
Birthweight, grams				0.2
Low birthweight (<2500g)	11 (8.5)	6 (11.3)	5 (6.5)	
Normal (2500 - 4000g)	111 (85.4)	46 (86.8)	65 (84.4)	
High (>4000g)	8 (6.1)	1 (1.9)	7 (9.1)	
Median (IQR)	3180 (2880 - 3540)	3140 (2690 - 3360)	3240 (2940 - 3580)	
Preterm (<37 weeks Gestational Age)				1.0
Yes	9 (6.9)	4 (7.5)	5 (6.5)	
No	121 (93.1)	49 (92.5)	72 (93.5)	
Size for Gestational Age, <10 th centile				0.07
Yes	12 (9.2)	8 (15.1)	4 (5.2)	
No	118 (90.8)	45 (84.9)	73 (94.8)	
Mode of Delivery				0.2
Vaginal Delivery	97 (74.6)	42 (79.2)	55 (71.4)	
Elective Caesarean	24 (18.5)	4 (7.6)	4 (5.2)	
Emergency Caesarean	8 (6.1)	6 (11.3)	18 (23.4)	
Missing	1 (0.8)	1 (1.9)	0 (0)	

650

651 ¹Differences between the two groups were assessed using a two-sample t-test or Wilcoxon rank-sum test
652 depending on the distribution for numerical data and the chi² test or Fisher's exact test for categorical data.

653

654 **Table 3: Placental characteristics and pathology at delivery among women initiating ART**
 655 **before or during pregnancy.**

	Total N=130	¹ ART Initiation before pregnancy N=53	ART Initiation during pregnancy N=77	P-value
Placental weight (g), median (IQR)	412 (346 - 480)	392 (346 - 440)	422 (344 - 490)	0.09
Placental weight (g)				1.0
Small (<10 th percentile)	43 (33.1)	17 (32.1)	26 (33.8)	
Appropriate (10 - 90 th percentile)	85 (65.4)	35 (66.0)	50 (64.9)	
Large (>90 th percentile)	1 (0.8)	0 (0)	1 (1.3)	
Missing	1 (0.8)	1(1.9)	0(0)	
Fetal-Placenta weight ratio				0.9
Small (<10 th percentile)	3 (2.3)	1 (1.9)	2 (2.6)	
Appropriate (10 - 90 th percentile)	81 (62.3)	32 (60.4)	49 (63.6)	
Large (>90 th percentile)	45 (34.6)	19 (35.8)	26 (33.8)	
Missing	1 (0.8)	1(1.9)	0(0)	
Placenta greatest diameter (mm), median (IQR)	170 (160 - 180)	175 (161 - 189)	170 (160 - 180)	0.1
Placenta thickness (mm), median (IQR)	17.5 (10 - 25)	15 (10 - 22)	20 (10 - 25)	0.4
Cord insertion				0.1
Central	20 (15.4)	6 (11.3)	14 (18.2)	
Off centre	88 (67.7)	34 (64.1)	54 (70.1)	
Marginal	16 (12.3)	10 (18.9)	6 (7.8)	
Missing	6 (4.6)	3(5.7)	3(3.9)	
Meconium exposure				0.9
+	25 (19.2)	10 (18.9)	15 (19.5)	
-	105 (80.8)	43 (81.1)	62 (80.5)	
Chorioamnionitis				
<i>Maternal Inflammatory Response</i>				0.8
+	19 (14.6)	7 (13.2)	12 (15.6)	
-	111 (85.4)	46 (86.3)	65 (84.4)	
<i>Fetal Inflammatory Response</i>				0.1
+	20 (15.4)	5 (9.4)	15 (19.5)	
-	110 (84.6)	48 (90.6)	62 (80.5)	
Chronic Deciduitis				0.8
+	14 (10.8)	5 (9.4)	9 (11.7)	
-	116 (89.2)	48 (90.6)	68 (88.3)	
Maternal Vascular Malperfusion (MVM)				0.01
+	36 (27.7)	21 (39.6)	15 (19.5)	
-	94 (72.3)	32 (60.4)	62 (80.5)	

656 ¹Differences between the two groups were assessed using a two-sample t-test or Wilcoxon rank-sum test
 657 depending on the distribution for numerical data and the chi² test or Fisher's exact test for categorical data.
 658

659 **Table 4: Relationship between placenta pathology and preterm delivery, size for gestational age and low birthweight.**

	¹ Preterm delivery			¹ Size for gestational age (<10 th centile)			¹ Low birthweight (<2500g)		
	Y (%)	N (%)	<i>p</i>	Y (%)	N (%)	<i>p</i>	Y (%)	N (%)	<i>p</i>
Percentile placental weight			0.7			0.1			1.0
<10 th	2 (23)	41 (34)		7 (58)	36 (30)		4 (36)	39 (33)	
>10 th	6 (67)	80 (66)		5 (42)	81 (69)		7 (64)	79 (66)	
<i>Missing</i>	1 (11)	0 (0)		0(0)	1(1)		0 (0)	1(1)	
Cord insertion			0.2			1.0			0.1
Central	3 (33)	17 (14)		2 (17)	18 (15)		4 (36)	16 (13)	
Off centre	5 (56)	83 (69)		8 (67)	80 (68)		7 (64)	81 (68)	
Marginal	0 (0)	16 (13)		1 (8)	15 (13)		0 (0)	16 (14)	
<i>Missing</i>	1 (11)	5 (4)		1 (8)	5 (4)		0 (0)	6 (5)	
Meconium exposure			1.0			0.01			0.7
+	1 (11)	24 (19)		6 (50)	19 (16)		1 (9)	24 (20)	
-	8 (89)	97 (80)		6 (50)	99 (84)		10 (91)	95 (78)	
Chorioamnionitis									
<i>Maternal Inflammatory Response</i>			0.4			0.4			0.4
+	0 (0)	19 (16)		3 (25)	16 (14)		0	19 (16)	
-	9 (100)	102 (84)		9 (75)	102 (86)		11 (100)	100 (84)	
<i>Fetal Inflammatory Response</i>			0.4			1.0			0.2
+	0	20 (17)		2 (17)	18 (15)		0	20 (17)	
-	9 (100)	101 (83)		10 (83)	100 (85)		11 (100)	99 (83)	
Chronic Deciduitis			1.0			0.4			0.4
+	1 (11)	13 (11)		0	14 (12)		2 (18)	12 (10)	
-	8 (89)	108 (89)		12 (100)	104 (88)		9 (82)	107 (90)	
Decidual arteriopathy			0.07			0.5			0.1
+	2 (22)	5 (4)		1 (8)	6 (5)		2 (18)	5 (4)	
-	7 (78)	116 (96)		11 (92)	112 (95)		9 (82)	114 (96)	
Maternal Vascular Malperfusion (MVM)			0.002			0.09			<0.0001
+	7 (78)	29 (24)		6 (50)	30 (25)		10 (91)	26 (22)	
-	2 (23)	92 (76)		6 (50)	88 (75)		1 (9)	93 (78)	

660

661 ¹To assess potential risk factors for preterm delivery (<37 weeks gestational age), size for gestational age (<10th percentile) and low birth weight (<2500g), we compared
662 differences between groups using the chi² test or Fisher's exact test.

663 **Supplementary Table 1: Substance use among study participants.**

	Total N=130	ART Initiation before pregnancy N=53	ART Initiation during pregnancy N=77	p-Value
Substance Used†				
Alcohol				0.2
Yes	22 (16.9)	6 (11.3)	16 (20.8)	
No	105 (80.8)	45 (84.9)	60 (77.9)	
Missing	3 (2.3)	2 (3.8)	1 (1.3)	
Smoking				0.1
Yes	7 (5.4)	5 (9.4)	2 (2.6)	
No	121 (93.1)	46 (86.8)	75 (97.4)	
Missing	2 (1.5)	2 (3.8)	0 (0)	
Drugs				0.5
Yes	2 (1.5)	0 (0)	2 (2.6)	
No	126 (96.9)	51 (96.2)	75 (97.4)	
Missing	2 (1.5)	2 (3.8)	0 (0)	

664 †Substance use is self-reported over the last 30 days

665 ¹Differences between the two groups were assessed using a two-sample t-test or Wilcoxon rank-sum test
666 depending on the distribution for numerical data and the χ^2 test or Fisher's exact test for categorical data.

667

668 **Supplementary Table 2: Maternal and obstetric characteristics of pregnant women at enrolment: comparing no placenta vs placenta**
 669 **collection.**

	Total	No Placenta	Placenta	p-value	No Placenta N=421			Placenta N=130		p-value
	N=551	N=421	N=130		ART Initiation before pregnancy N=208	ART Initiation during pregnancy N=213	p-value	ART Initiation before pregnancy N=53	ART Initiation during pregnancy N=77	
Age, years				0.6			<0.001			<0.001
≤24	92 (16.7)	68 (16.2)	24 (18.5)		20 (9.6)	48 (22.5)		5 (9.4)	19 (24.7)	
25-29	156 (28.3)	120 (28.5)	36 (27.7)		48 (23.1)	72 (33.8)		10 (18.9)	26 (33.8)	
30-34	179 (32.5)	142 (33.7)	37 (28.5)		74 (35.6)	68 (31.9)		14 (26.4)	23 (29.9)	
≥35	124 (22.5)	91 (21.6)	33 (25.4)		66 (31.7)	25 (11.7)		24 (45.3)	9 (11.7)	
Median (IQR)	30 (26-34)	30 (26-34)	31 (26-35)		32 (28-35)	29 (25-32)		33 (28 - 37)	28 (25 - 32)	
Median Gestation at Enrolment	14 (10-18)	13 (10-17)	14 (11-18)	0.04	13 (9-16)	14 (10-18)	0.02	13 (10-18)	15 (11-18)	0.2
Gravidity				0.14			0.001			0.1
1	89 (16.1)	75 (17.8)	14 (10.8)		50 (23.5)	25 (12.0)		4 (7.5)	10 (13.0)	
2	189 (34.3)	139 (33.0)	50 (38.5)		76 (35.7)	63 (30.3)		16 (30.2)	34 (44.2)	
≥3	273 (49.6)	207 (49.2)	66 (50.8)		87 (40.8)	120 (57.7)		33 (62.3)	33 (42.9)	
ART regimen				0.1			<0.001			0.2
TDF-3TC-EFV	499 (90.6)	380 (90.3)	119 (91.5)		173 (83.2)	207 (97.2)		47 (88.7)	72 (93.5)	
TDF-3TC-NVP	4 (0.7)	4 (0.9)	0 (0)		2 (0.9)	2 (0.9)		0 (0)	0 (0)	
AZT-3TC-NVP	10 (1.8)	8 (1.9)	2 (1.6)		8 (3.9)	0 (0)		1 (1.9)	1 (1.9)	
AZT-XTC-EFV	13 (2.4)	7 (1.7)	6 (4.6)		5 (2.4)	2 (0.9)		2 (3.8)	4 (5.2)	
PI-based regimen	25 (4.5)	22 (5.2)	3 (2.3)		20 (9.6)	2 (0.9)		3 (5.7)	0 (0)	
¹ Body Mass Index, kg/m ²				0.4			0.3			0.6
Normal (18.5-24.9)	115 (20.9)	88 (20.9)	27 (20.8)		38 (18.3)	50 (23.5)		12 (22.6)	15 (19.5)	
Overweight (25.0-29.9)	149 (27.0)	108 (25.7)	41 (31.5)		58 (27.9)	50 (23.5)		18 (34.0)	23 (29.9)	
Obese (>30.0)	282 (51.2)	221 (52.5)	61 (46.9)		111 (53.4)	110 (51.6)		22 (41.5)	39 (50.6)	
Missing	5 (0.9)	4 (0.9)	1 (0.8)		1 (0.5)	3 (1.41)		1 (1.9)	0(0)	
Blood Pressure, Enrolment (mmHG)				0.4			0.3			0.03
Normal (Sys <120 and Dia <80)	405 (73.5)	306 (72.7)	99 (76.2)		156 (75.0)	150 (70.4)		46 (86.8)	53 (68.8)	
Prehypertensive (Sys 120-139 or Dia 80-89)	123 (22.3)	95 (22.6)	28 (21.5)		45 (21.6)	50 (23.5)		6 (11.3)	22 (28.6)	
Hypertensive (Sys >140 or Dia >90)	23 (4.2)	20 (4.7)	3 (2.3)		7 (3.4)	13 (6.1)		1 (1.9)	2 (2.6)	

670 ¹At enrolment or first ANC

671 FIGURE LEGENDS

672 Figure 1A: Digital scan of a representative Haematoxylin and Eosin (H&E) stained section
673 showing chorioamnionitis of the membranes (maternal response).

674

675 Figure 1B: Digital scan of a representative H&E stained section showing a neutrophilic
676 infiltrate involving the cord vein wall extending into Wharton's jelly of the cord (fetal
677 response).

678

679 Figure 1C: Digital scans of representative H&E stained sections of the placenta showing an
680 infarct. Insert 1 shows a magnified image of the infarct and Insert 2 shows a magnified foam
681 cell (denoted by the arrow) within the decidual artery demonstrating atherosclerosis.

682

683 Figure 2A: Forest plot depicting the relative risk with the 95% confidence intervals of HIV
684 infected women presenting with a small placenta (<10th percentile for gestational age).

685

686 Figure 2B: Forest plot depicting the relative risk with the 95% confidence intervals of HIV
687 infected women presenting histologic chorioamnionitis.

688

689 Figure 2C: Forest plot depicting the relative risk with the 95% confidence intervals of HIV
690 infected women presenting with placental maternal vascular malperfusion.

691

692 Figure 2D: Alluvial plot depicting the impact of ART timing on the placental pathology
693 among women initiating treatment before pregnancy (*Initiating*) or during pregnancy
694 (*stable*). The plot depicts frequencies from a subset of women with abnormal placenta
695 pathology only. These include CA (Chorioamnionitis depicting FIR Fetal Inflammatory
696 Response; MIR, Maternal Inflammatory Response), CD (Chronic Deciduitis), MVM (Maternal
697 Vascular Malperfusion) and Meconium (Meconium Exposure) and the placenta size i.e. <10th
698 percentile for gestational age (small) and > 10th percentile for gestational age (Normal)
699 among women initiating treatment before pregnancy (*Initiating*) or during pregnancy
700 (*stable*).

701

Differential impact of antiretroviral therapy initiated before or during pregnancy on placenta pathology in HIV-positive women.

Figures

Figure 1A

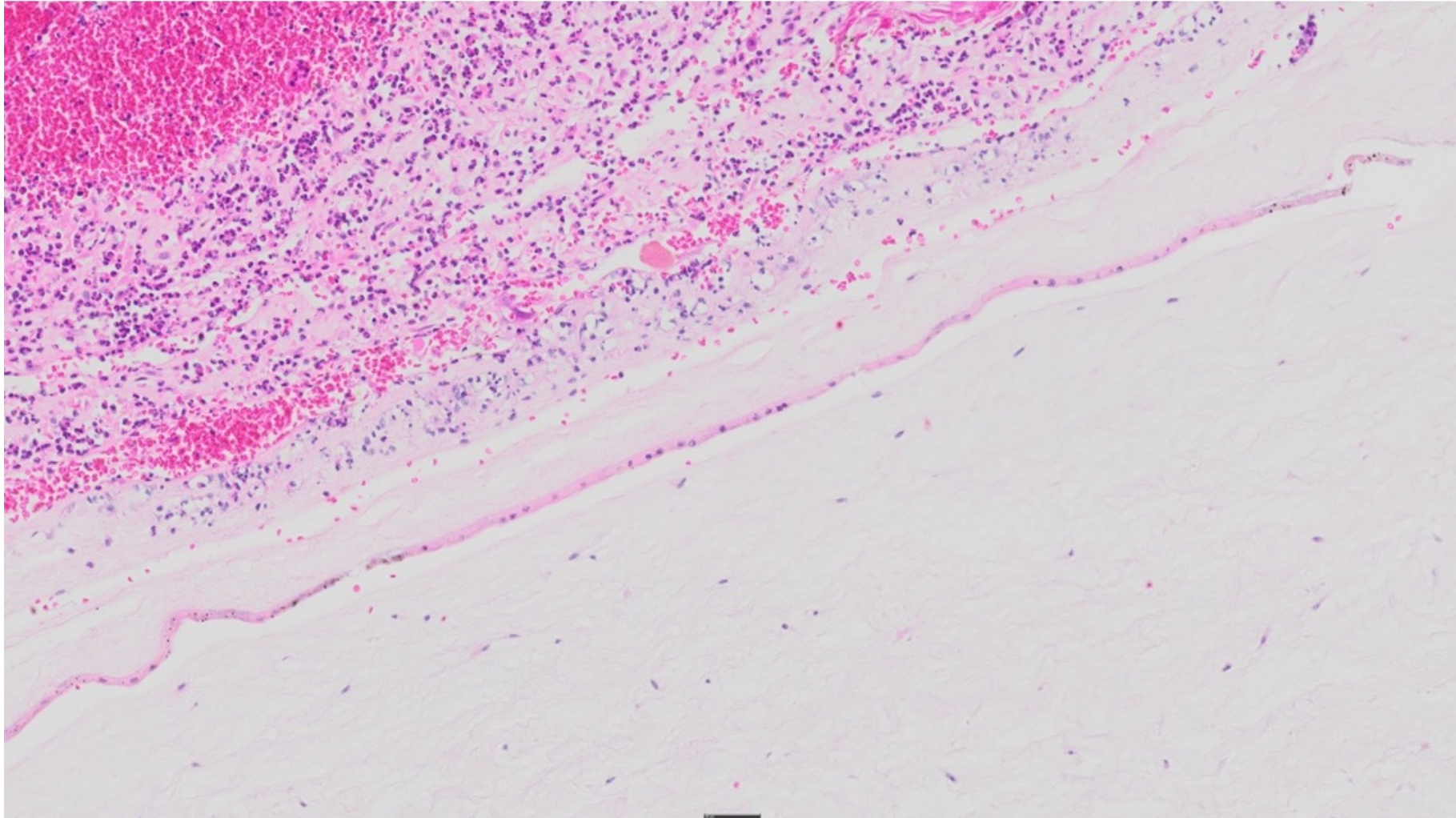


Figure 1A: Digital scan of a representative Haematoxylin and Eosin (H&E) stained section showing chorioamnionitis of the membranes (maternal response).

Figure 1B

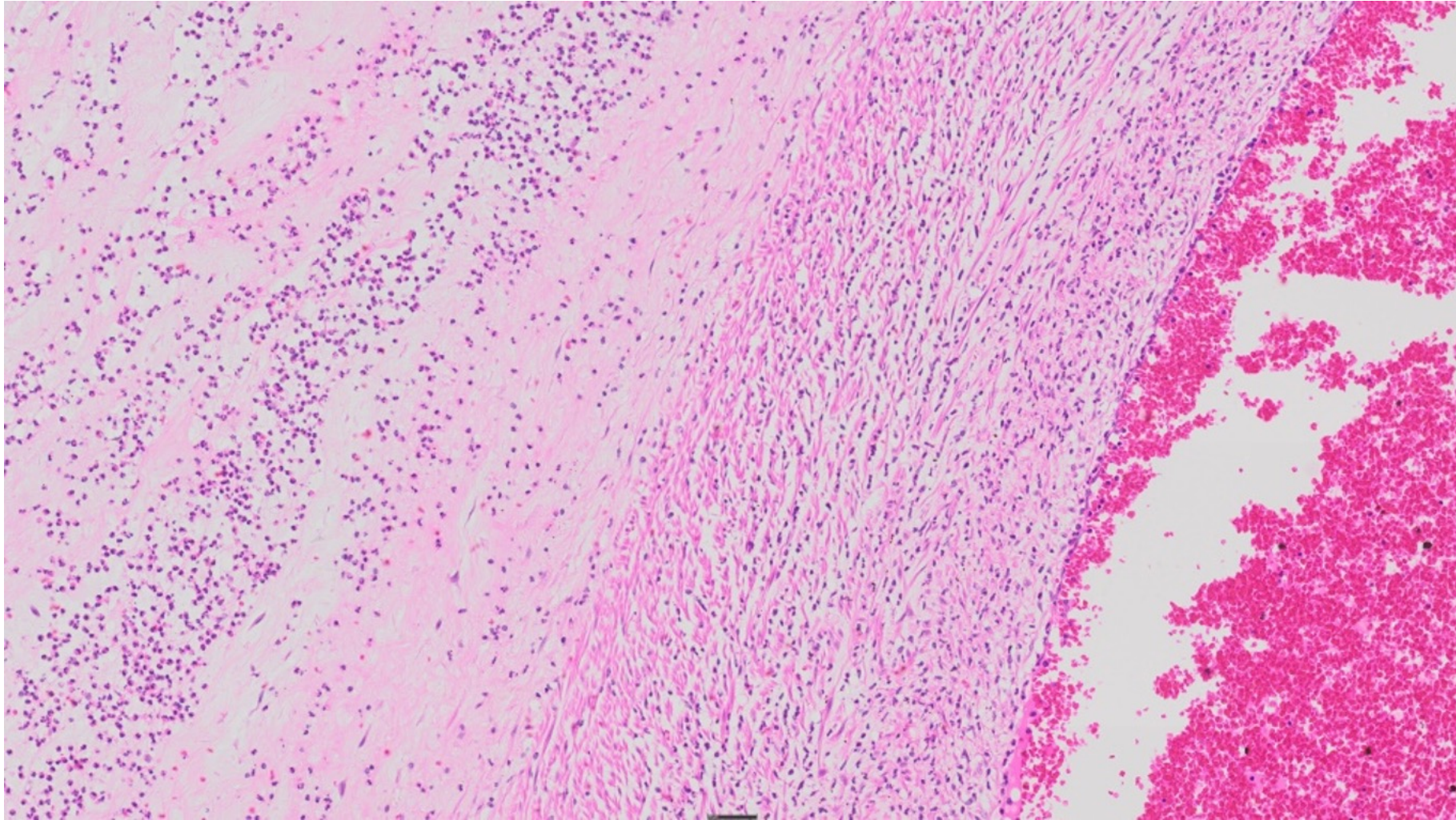


Figure 1B: Digital scan of a representative H&E stained section showing a neutrophilic infiltrate involving the cord vein wall extending into Wharton's jelly of the cord (fetal response).

Figure 1C

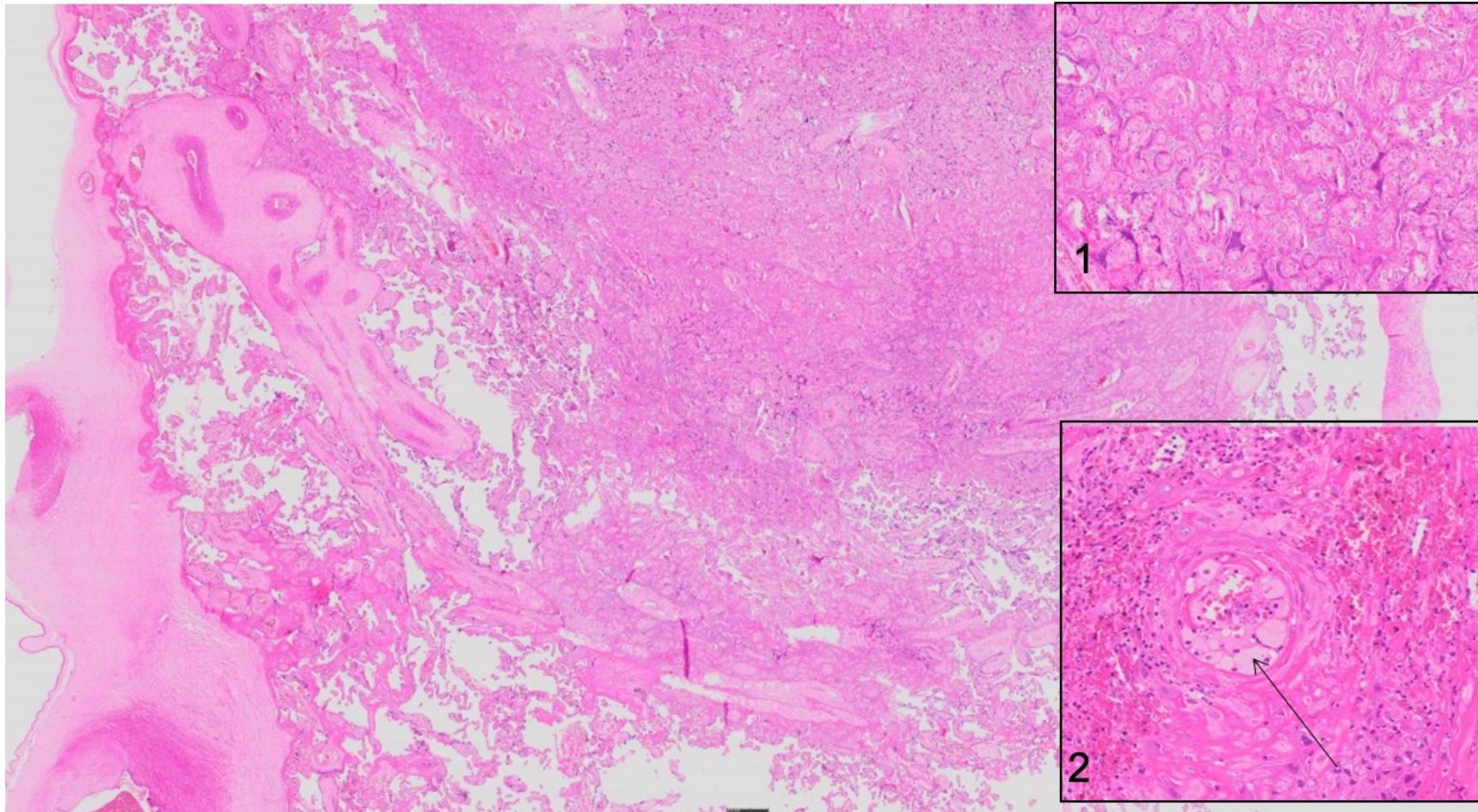


Figure 1C: Digital scans of representative H&E stained sections of the placenta showing an infarct. Insert 1 shows a magnified image of the infarct and Insert 2 shows a magnified foam cell (denoted by the arrow) within the decidual artery demonstrating atherosclerosis.

Figure 2A

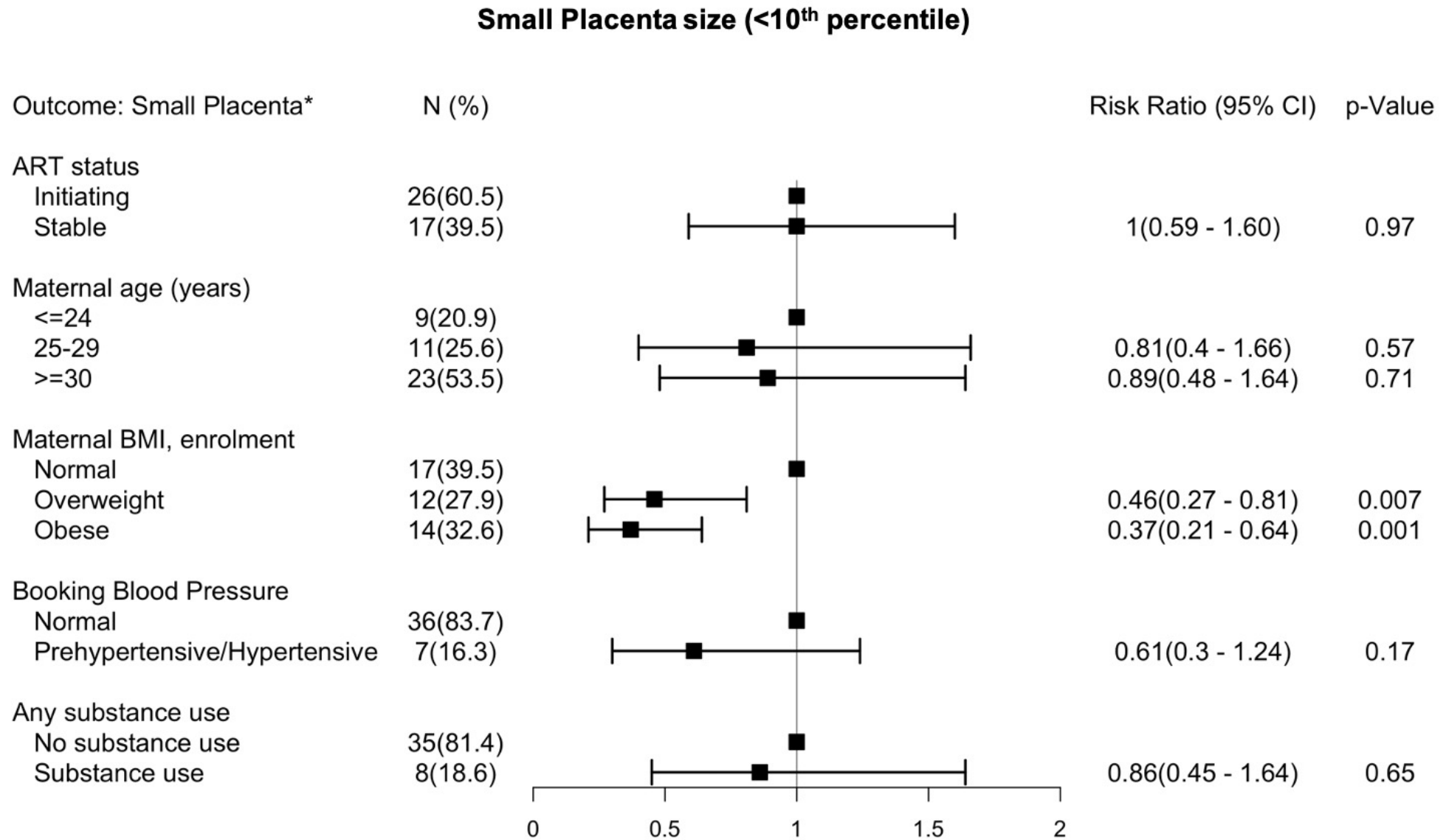


Figure 2A: Forest plot depicting the relative risk with the 95% confidence intervals of HIV infected women presenting with a small placenta (<10th percentile for gestational age).

Figure 2B

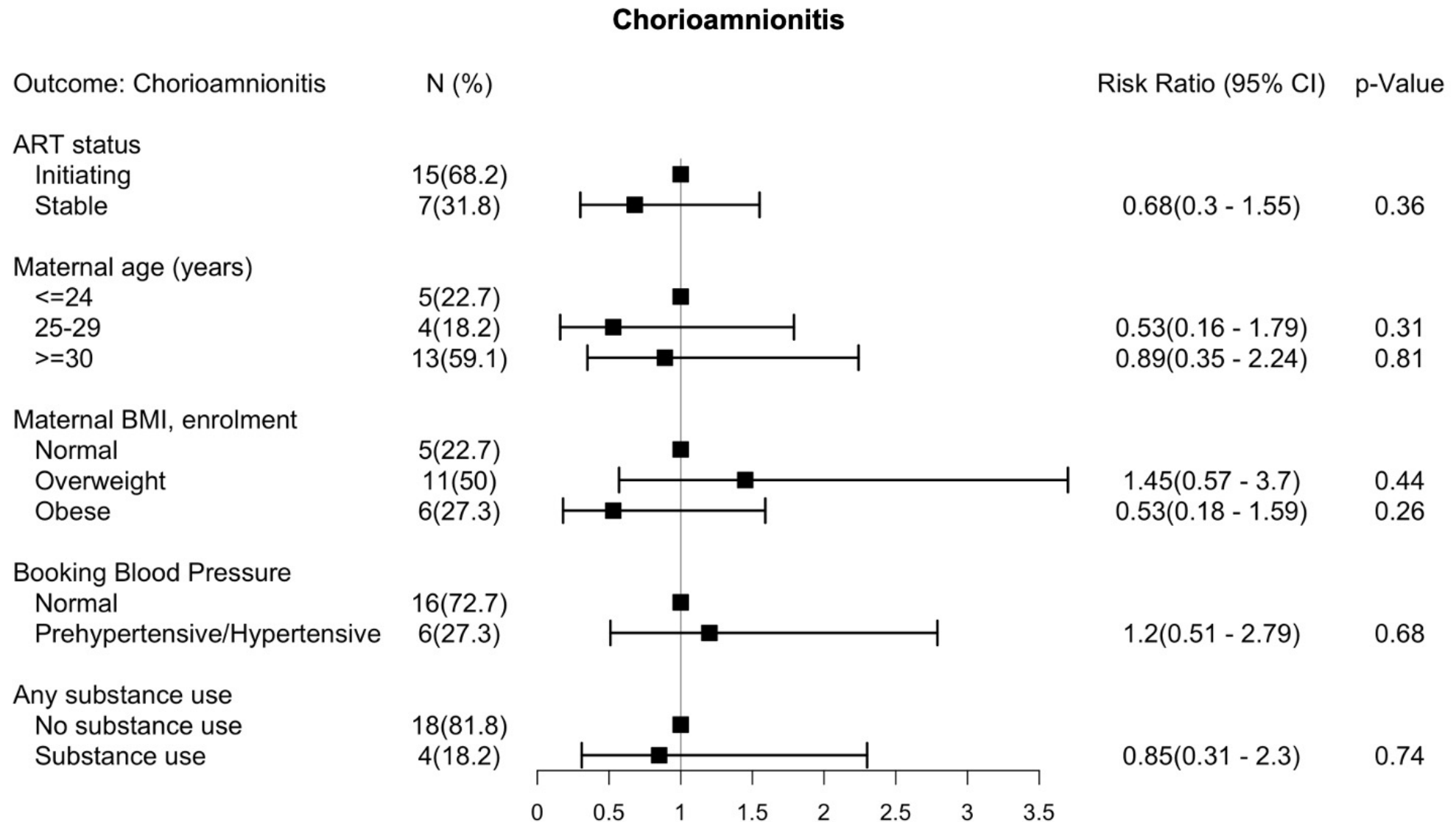


Figure 2B: Forest plot depicting the relative risk with the 95% confidence intervals of HIV infected women presenting histologic chorioamnionitis.

Figure 2C

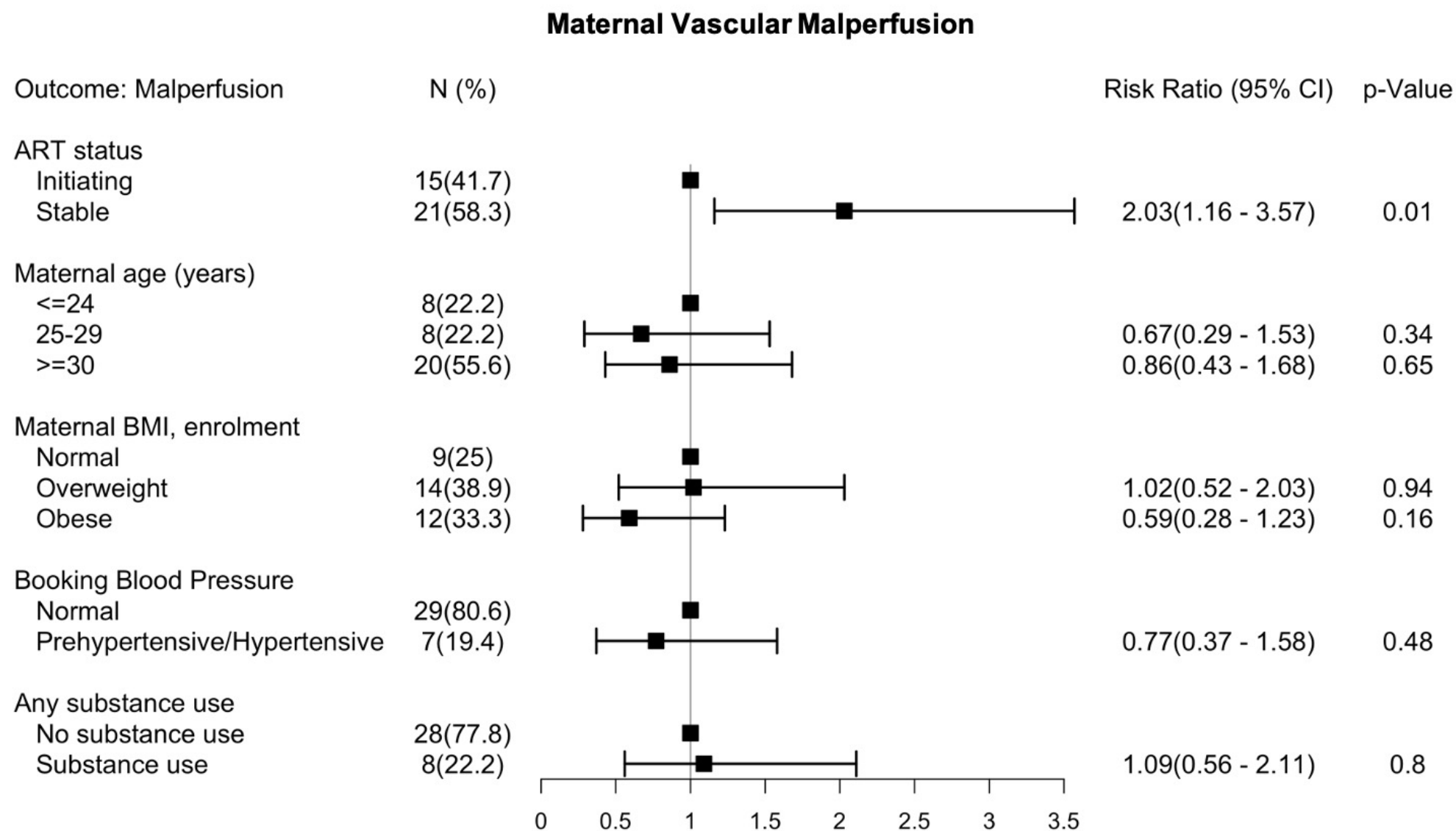


Figure 2C: Forest plot depicting the relative risk with the 95% confidence intervals of HIV infected women presenting with placental maternal vascular malperfusion.

Figure 2D

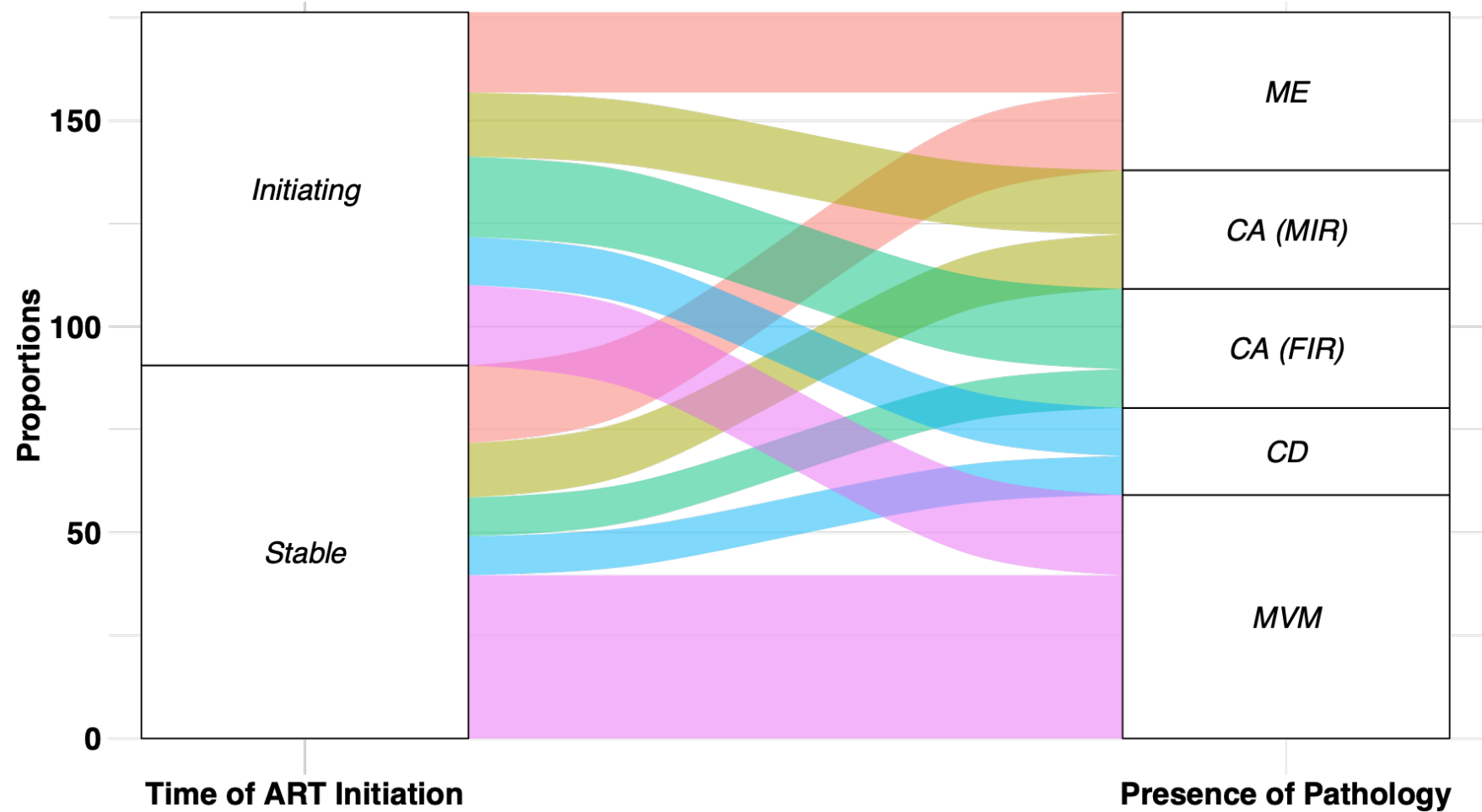


Figure 2D: Alluvial plot depicting the impact of ART timing on the placental pathology clusters among women initiating treatment before pregnancy (*Initiating*) or during pregnancy (*stable*). The plot depicts frequencies from a subset of women with abnormal placenta pathology only. These include CA (Chorioamnionitis depicting FIR Fetal Inflammatory Response; MIR, Maternal Inflammatory Response), CD (Chronic Deciduitis), MVM (Maternal Vascular Malperfusion) and Meconium (Meconium Exposure) and the placenta size i.e. <math><10^{\text{th}}</math> percentile for gestational age (small) and > Initiating) or during pregnancy (*stable*).