

No evidence of association between schools and SARS-CoV-2 second wave in Italy.

Sara Gandini^{1§}, Maurizio Rainisio², Maria Luisa Iannuzzo³, Federica Bellerba¹, Francesco Cecconi⁴ and Luca Scorrano^{5,6§}

1 Department of Experimental Oncology, European Institute of Oncology, IRCCS, Via Adamello 16, 20139 Milano, Italy

2 AbaNovus srl - Sanremo - Italy

3 AULSS 9 Scaligera-Dipartimento di Prevenzione-UOC Medicina Legale- Italy

4 Department of Biology, University of Rome 'Tor Vergata', 00133 Rome, Italy.

5 Department of Biology, University of Padua, Via U. Bassi 58B, 35131 Padova, Italy

6 Veneto Institute of Molecular Medicine, Via Orus 2, 35129 Padova Italy

§: Address correspondence to Sara Gandini sara.gandini@ieo.it and Luca Scorrano luca.scorrano@unipd.it

Keywords: Covid19, NPI, schools, reproduction number, Italy

Abstract

During Covid-19 pandemic, school closure has been mandated in analogy to its known effect against influenza, but it is unclear whether schools are early amplifiers of Covid19 cases. By analyzing the case scenario of school reopening across the twenty-one Italian regions, we did not find evidence that schools drove the second SARS-CoV-2 wave. Indeed, from September 12 to November 7 2020, SARS-CoV-2 incidence among students was lower than that in the general population of all but two Italian regions. From August 28 to October 25 in Veneto where school reopened on September 14, the growth of SARS-CoV-2 incidence measured across all age groups was lower in school age individuals, maximal in 20-29 and 45-49 years old individuals. Moreover, the increase in Covid19 reproduction number R_t was not associated with the different school opening dates. Reciprocally, school closures in two regions where they were implemented before other measures did not affect the rate of R_t decline. In schools, despite the high frequency of tests per week, secondary infections were <1%, and clusters in a representative November week infrequent. Thus, our prospective analysis does not support a role for school reopening as a driver of the second wave of SARS-CoV-2 epidemics in Italy.

NOTE: This preprint reports new research that has not been certified by peer review and should not be used to guide clinical practice.

Introduction

School closures represent a widespread nonpharmacological intervention (NPI) in the context of the current coronavirus disease 2019 (COVID-19) pandemic. In Italy, schools have been closed for more than half of the school year 2019-2020 and, during the second Covid19 wave, high schools have been closed again, with students switching to “integrated digital learning” since November 6, 2020. The rationale for such a NPI has mostly been drawn from the reported beneficial effect of school closure during influenza pandemics ¹, even if the debate was still open ². However, while children’s immune system is naïve to influenza antigens, making them a known reservoir of influenza infection, they do not appear as affected by COVID-19 as adults, representing a small fraction of documented COVID-19 cases. Similarly to SARS-CoV and MERS-CoV, SARS-CoV-2 affects less children, where symptoms are fewer, disease less severe and case-fatality rates much lower ^{3,45}.

Several biological factors might contribute to the reduced Covid19 risk of children: first, children express significantly fewer ACE2 receptors – the entry point of SARS-CoV-2 into human cells – compared to adults ⁶; second, they are commonly exposed to other seasonal coronaviruses and develop both humoral and cellular cross-immunity ⁷. Children appear therefore less susceptible to the infection, and when infected have a preformed arsenal of neutralizing cross reactive antibodies that might reduce the likelihood of transmitting the virus. This biological evidence is mirrored in several epidemiological studies. A meta-analysis of 32 studies from different countries suggests that children have a lower susceptibility to SARS-CoV-2 infection compared with adults ⁸. An age-structured mathematical model applied to epidemic data from China, Italy, Japan, Singapore, Canada and South Korea estimates that individuals younger than 20 years of age display half the chance of being infected than adults ⁹. In the context of households (the most common route of secondary infection) chances of transmission from children to adults are low and the

spread seldom starts from children. In a large study including 15,771 children aged 1 to 18 years living in Germany, almost two-thirds of children living with virus-positive family members were negative for SARS-CoV-2 antibodies and virus tests, suggesting that transmission to children is infrequent ¹⁰. In only three families (9.7%) among 31 household transmission cases that involved children in China, Singapore, USA, Vietnam, and South Korea the child represented the index case ¹¹. In a meta-analysis of all contact-tracing studies up to 16th May 2020, children are less susceptible to SARS-CoV-2 than adults, with 56% lower odds of being an infected contact (Pooled OR=0.44 (95%CI 0.29, 0.69)) ⁸. In the Italian town of Vo' Euganeo, where 70% of the population was screened and 2.6% of the population resulted positive, no child below 10 years of age was found positive, even if these children lived in the same household with a positive individual ¹². In a large cohort study on 12 million people in the UK, the risk of infecting and becoming infected with SARS-COV-2 grew with age. In the same study, risk of contracting the virus was not higher than that of the rest of the population for >9 million adults younger than 65 living with children up to 11 years of age. The risk increased slightly for those who lived with adolescents aged 12 to 18, but this risk did not correspond to a greater lethality in case of SARS-CoV-2 infection. Indeed, there was no significant effect of the school closure on the trend of the epidemic in the families analyzed compared to the rest of the population ¹³.

Despite evidence supporting a marginal role for children in Covid19 pandemic, school openings (or re-openings) have been considered an issue. This notion has been based on modeling studies and systematic reviews showing conflicting results on whether school closures were efficacious in curtailing the general incidence of infection ^{14,15}. Moreover, adolescents were reported to be just as likely as adults to spread the virus ¹⁶, and in one study levels of Sars-CoV-2 genetic material in the upper respiratory tract of children below 5 years with mild to moderate COVID-19 was more than in children 6-17 and adults ¹⁷.

Furthermore, in a COVID-19 outbreak at a summer camp in Georgia, children of all ages were found to be highly susceptible to infection: 51% of the campers ages 6 to 10 tested positive, as did 44% of those ages 11 to 17 ¹⁸. In Israel, schools fully reopened on 17 May 2020 and ten days later, a major outbreak of coronavirus disease (COVID-19) occurred in a high school; temporal correlation between school openings and the second wave was interpreted as a causal link ¹⁹. By extension, policymakers (as well as the lay public) attribute to school openings a key role in amplifying infection rates in the general population. This opinion is particularly widespread in Italy, where schools remained closed from February 25 in Northern Italian regions (from March 9 nationwide) until September, when they reopened in different days across different regions. Despite the implementation of a very strict infection risk mitigation protocol, school openings have been regarded as a key factor in the amplification of the second Covid19 wave and their closure has been predicated by several data analysts. Consequently, high schools nationwide and, in certain regions, the second and third year of middle schools (the Italian middle school curriculum lasts 3 years) have been closed since November 6. In other regions (Campania and Apulia), closure of all schools including elementary and preschools has been mandated since October 16 and 30, respectively. In Lombardy, high schools have been closed since October 26. However, whether school openings played a crucial role in the second wave of Covid19 infections remains to be ascertained. Italy was in a privileged position to investigate this possibility: school calendars are regional and starting dates differ among different regions by up to 17 days.

We investigated the overall incidence of SARS-CoV-2 infection among students, as well as whether there was an association between the increase in transmissibility of SARS-CoV-2 (measured as reproduction number R_t) and dates of school openings in different Italian Regions. We also estimated the incidence of SARS-CoV-2 by age in Veneto and the

incidence of SARS-CoV-2 positive students, teachers, and other staff in public and private schools in a week in November in the Italian regions. We calculated the rate of secondary infections and frequency of clusters identified during contact tracing activity in a large sample of Italian Schools. Our data fail to indicate a role for schools as drivers of the second Covid19 wave in Italy.

Study design and methods

This was a cross-sectional and prospective cohort study. Data collected within the comprehensive, national reporting system put in place by the Italian Ministry of Education (Ministero dell'Istruzione - MI) to collect information from school Principals every week for each comprehensive private and state institute. All institutes are required to inform the Department of Prevention of the local unit (AULSS) of the National Health System responsible for tracing and the MI when they suspect or identify a case or outbreak of Covid19. AULSS then perform a risk assessment and decide on any additional investigation and infection control measure, based on factors such as the number of new positive subjects, disease severity, and potential transmission at school. AULSS record each event within each region in an online national database of public health management. MI and AULSS have legal permission to process patient confidential information for national surveillance of communicable diseases.

For outbreaks, direction of transmission from the index case to secondary cases was inferred based on the date of symptom onset for symptomatic individuals and date of testing for asymptomatic individuals. We evaluated associations between event measures in educational settings, regional Covid19 incidence, and other regional characteristics to identify possible predictors for cases and outbreaks.

We used a database with data collected by MI containing the number of new positive SARS-CoV-2 cases per school from September 20 to November 8, 2020. This database reports the incidence in the first cycle (kindergarten, elementary and middle school) and second cycle (high school) by region. We also analyzed data of SARS-CoV-2 incidence in schools in the period 23-28 November, 2020 in a sample of 6,827 public institutes (81.6% of the total) and 7,035 private institutes (55.6% of the total institutes). Furthermore, we analyzed data collected by MI from contact tracing in the monitored schools (from 23 November to 5

December 2020). Information were retrieved from 5.971 (45%) institutes in the first week, and 7,035 (55.6%) institutes in the second week (public and private institutes), accounting for 423,516 and 496,289 students in the first and second week, respectively.

We calculated regional COVID-19 incidence using national SARS-CoV-2 RT-PCR data collated by AULSS for COVID-19 surveillance, and regional population estimates from the Office for National Statistics (Istituto Nazionale di Statistica, ISTAT).

SARS-CoV-2 positive incidence rates were calculated for staff and students attending an educational setting, irrespective of whether the infection was acquired within or outside the educational setting. For event rate calculations, attendance denominators for open educational settings were obtained from Department for Education reports.

For incidence rates calculations, denominators were drawn from Department for Education attendance figures, based on daily school registers.

Median values and inter-quartile ranges for continuous variables and absolute and relative frequencies for categorical variables are presented. Differences among groups for continuous variables were tested by means of the non-parametric Wilcoxon-rank sum test and differences for categorical variables were tested by means of the Chi-square test.

Incidence rates of secondary infections were defined as number of cases/number of tests occurring the same week after a SARS-COV-2 positive student or teacher was found. LSmeans, 95%CI and P-values of rate of secondary infections and number of positive test per institute and week are estimated with multivariable generalized linear regression model adjusted for week of test and density of the region, weighted for the number of tests released in each institute to trace close contacts. Square root transformations were carried out to achieve normality of residuals of full models.

Incidence rates were calculated as the sum of all new positive cases in each week, divided by the size of the population. We work out the cases per 10,000 (a standard epidemiological way of presenting incidence) by dividing the number of cases by the population in each age group (estimates are from ISTAT, 2018).

To generate the incidence heatmap, a matrix of the weekly incidence referred to individual age ranges was calculated. Using Excel, individual cells were color coded in a 3 color scale (green-beige-red) of increasing weekly incidence rate. To generate the heatmap of distance between age brackets, the same matrix was fed to the Heatmapper algorithm (www.heatmapper.ca) and we selected to calculate the distance between rows and columns using the Euclidean Distance Measurement Method.

Transmissibility was measured by the reproduction number R_t , as the average number of secondary cases caused by an infected individual. We estimated R_t over the months incorporating uncertainty in the distribution of the serial interval (the time between the onset of symptoms in a primary case and the onset of symptoms in secondary cases)²⁰. R_t was computed using EpiEstim²⁰ with parameters from the first wave in Italy as defined by Merler and coworkers²¹ (serial interval: 6.6, gamma 2.8). Unless differently noted, R_t was computed from the positives after referral to swab by a physician (*sospetto diagnostico*, meaning diagnostic suspicion). Data were retrieved from the database of the Italian Civil Protection (<https://github.com/pcm-dpc/COVID-19>). In all graphs, R_t values are reported as median values with 95% confidence interval over a 7-day period. When an NPI was introduced and school opening occurred, their effect on R_t was referred to the first day of the corresponding 7-day period. For example, if schools opened on September 14, their effect on R_t was introduced from the period September 14-20.

Statistical analyses were performed with Statistical Analysis System Version 9.4 (SAS Institute, Cary, NC, USA) or with OriginPro 2021 (OriginLab, Northampton, MA, USA).

Results

School demographics and the 2020-21 school year in Italy

According to the National Statistical Institute (ISTAT), 9,150,518 students attended schools (from nurseries to high schools) in 2019 in Italy. On average, students represented 15% of the population of each of the 20 Italian regions and two autonomous Provinces (range: 10.7%-19%; Table 1). While kindergartens (nurseries or *asili nido*, attended by children 0-2 years old; and schools for infants or *scuola dell'infanzia* attended by children 3-5 years old) started nationwide on September 1st, the calendarized opening day of all other schools differed among regions. In most regions, schools started on September 14; in a second group of regions schools opened on September 24; in two other regions on September 16 or 22 (Table 2). The Italian Government mandated a protocol to minimize risk of Covid19 diffusion that followed most of the strictest recommendations ²². Measures included temperature control and hand hygiene at the school entrance; unidirectional flows of students; mask mandate for all personnel and students in common areas and for high school students also when seated at their desks (and always for teachers, combined with face-shields in certain settings), compulsory 1m seat to seat distance, frequent classroom natural ventilation, ban on school sports and music, reduced duration of school hours and reduced school duration. Moreover, Covid19 positive staff members must promptly inform the school Principal. Similarly, parents must promptly report any case of Covid19 positivity in their children to the schools and Principals must coordinate with local units of the National Health System to perform secondary screenings among staff/students, or to mandate quarantine for 10 days with a swab to all quarantined students/personnel before re-admitting them to the school premises. Notwithstanding these rules, school opening has been accounted as the driver of the second Covid19 wave by the popular press as well as by opinion makers, calling for a careful analysis of Covid19 diffusion and contact tracing among children in

schools, as well as of the association between dates of school openings and qualitative changes in the R_t trend direction (1st derivative of R_t), a consolidated proxy of epidemic driver.

Incidence of Covid19 among students is lower than in the general population.

To gain insight into the diffusion of Covid19 in Italian Schools, we analyzed a Database from the Italian Ministry of Education (MI). The MI collected data on SARS-CoV-2 positivity in the period September 12 to November 7 from 7,976 public school institutes (97% of total), accounting for 7,376,698 students, 775,451 teachers and 206,120 staff members. We used this database to calculate the incidence of new positives in the period and per week among students, teachers and staff members of elementary, middle and high schools. We compared these data to the incidence of SARS-CoV-2 positivity in the general population for each region. The incidence of positives among students was lower than that in the population (overall incidence: 108/10,000), irrespective of whether we analyzed elementary and middle schools (incidence: 66/10,000), or high schools (incidence: 98/10,000). Incidence of new positives among elementary and middle school students was on average 38.9% lower than in the general population in all Italian regions but Lazio (Figure 1A). In the case of high schools, incidence of new positives among the students was 9% lower to that of the general population (Figure 1B). In the three regions of Lazio, Marche, and Emilia-Romagna, it was higher than in the general population. Among teachers and non-teaching staff incidence was 2-fold higher than that observed in the general population (approx. 220/10,000, Figure 1C). These data indicate that students are largely protected from SARS-CoV-2 infection, irrespective of their school cycle. Conversely, infection appears to be more widespread among teachers and staff members of schools than in the general population.

It shall be noted that while teachers share classrooms for several hours with students, staff members include administrative personnel and janitors who seldom interact with students.

We next used a second database, in which the MI collected the number of new cases in the period 23-28 November in a sample of 6,827 public (81.6% of the total) and 7,035 private institutes (55.6% of the total). This database offers a snapshot of the distribution of new cases in a limited timeframe during the peak of the second Covid19 wave. New positive subjects were found mostly among teachers and staff members: SARS-CoV-2 positives were 0.32% of students, 1.52% of teachers and 1.96% of staff members (Table 3, Figure S1). The highest rate was found in Molise and the lowest in Calabria. Incidences of new cases in kindergarten were 0.21% in pupils and 2.35% among teachers ($P<0.001$), in elementary schools were 0.35% among children and 1.83% among teachers ($P<0.001$), in middle schools 0.45% students and 1.60% teachers were found positive ($P<0.001$, Table 4 and 5). Similar incidence rates were found in private schools (Table S3-S4), except for a slightly lower rate among staff members (1.67%, Table S1). This database allowed us also to investigate how often the communication of a positive case elicited quarantine for students/staff members. A quarantine period was requested for 1.92% of students, 2.30% of teachers and 2.56% of staff members of the analyzed public schools (Table 6). In private schools, rates of quarantines were very similar, except for a slightly higher rate for children (2.65%, Table S4). These data indicate that even during the peak of the second Covid19 wave, students were less infected than adults in school establishments, and that overall, the quarantine system was widespread, vis-à-vis a very low rate of positivity among students.

Finally, to compare the degree of infection transmission from students and teachers to their close contacts, we analyzed data collected by the MI from contact tracing in the monitored schools (from November 23 to December 5, 2020). Information was retrieved from 5,971 (45%) institutes in the first week and 7,035 (55.6%) institutes in the second week (public

and private kindergarten, elementary and middle schools), accounting for 423,516 and 496,289 students in the first and second week, respectively. The Least Square estimates of the incidence of secondary cases over the number of tests carried out on close contacts of a positive subjects in school was less than 1% per school and week for teachers and students, in kindergarten, elementary and middle schools. Estimates of rates when the index case was a student, or a teacher were not statistically different (Table 7). The number of tests per institute per week ranged from an average of 7 in kindergarten to 18 in middle schools (Table 8). Figure 2 shows the box-plot of the numbers of test per school when a student is the index case and when the index case is a teacher. Twenty-seven schools carried out more than 100 tests in a week. Clusters, defined as >2 SARS-CoV-2 positive subjects identified in one week following contact tracing of index cases, were found in 5% to 7% of schools (Figure S2). On average, 49%-56% of all close contacts of a positive student or teacher were placed in quarantine for 10 days, with the need of a negative swab at the end of the period to be readmitted at school. These striking data corroborate the notion that elementary and middle school students not only are less infected, but also that the risk of infection at schools is low. Moreover, they indicate that contact tracing results in a high number of swabs per contacts, especially when the index case is a student, more than the average of tests for contact tracing in the general population. Altogether, our analysis of the data collected by the MI indicates that in Italy students are less infected than the general population and the overall protocols for contact tracing work, questioning whether schools played a role as amplifiers of the second Covid-19 wave.

Increases in R_t in Italian regions with different school opening dates.

We reasoned that if school openings had played a role in the second wave of Covid19 in Italy, the reproduction number R_t shall have increased earlier in the regions where schools

started earlier. We first tested this hypothesis by analyzing the case of the two provinces of Bolzano, where schools started on September 7, and Trento, where they started on September 14 (Table 2). Given the similarities between these two territories in terms of orography, population density (72 inhabitants/km² in Bolzano 87 in Trento), climate and lifestyle, they represent a very useful case scenario to investigate the role of schools in the local spread of Covid19. We computed R_t using a serial interval of 6.6 days²¹ on the incidence of the so called “diagnostic suspicion” cases, that are positives after a molecular swab performed because of a clinical referral by the physician (data retrieved on Dec. 3, 2020 from the repository of the Italian Civil Protection Department <https://github.com/pcm-dpc/COVID-19>). Notwithstanding that schools in Trento opened 7 days later than in Bolzano, the increase in median R_t occurred from the period 22/9-29/9, whereas in Bolzano R_t started to increase from the period 29/9-6/10, suggesting that there is no temporal relation between schools opening and surge in R_t (Figure 3A).

We extended our analyses to different pairs of Regions where schools opened on different days. We compared the temporal distribution of R_t in Abruzzo and Marche, two bordering regions of central eastern Italy. Because of reporting issues from these two Regions, we utilized the incidence of all Covid19 positive cases (physician referral and screening due to local campaigns and to contact tracing). In Marche, schools opened on September 14, in Abruzzo on September 24. In both regions, R_t started to increase from the 29/9-6/10 period (Figure 3B). We repeated the same exercise for the pair Sicily-Calabria, where schools started on September 14 and 24, respectively. Again, we found no difference in the period when R_t started to increase (Figure 3C). Finally, even in the case of the pair Veneto-Apulia where schools opened on September 14 and 24, respectively and where the R_t curve followed a biphasic pattern, we did not appreciate any difference in the period when R_t started to increase (Figure 3D). Altogether, these data indicate that the increase in SARS-

CoV-2 reproduction number in different Italian regions occurred indeed after school openings, but that at the same time the delay between school opening and R_t rise was not constant as it would be expected if it were the only driver of Covid19 diffusion. This lag time appeared indeed shorter in regions where schools opened on September 24, longer in those regions where schools opened on September 14. We further corroborated this impression by calculating the number of days from the date of the school opening to the R_t across all Italian regions increase (Figure S3). The average delay from school opening to R_t increase was 4.7 days (CI: 3.2-6.1) in regions where schools opened on September 22 or 24, 14.9 days (CI: 12.2-17.5) in regions where schools opened on September 14 or 16 (Figure 4A, $P < 0.05$ in a Wilcoxon rank test). Conversely, the average delay between the R_t rise and the national election day held on September 21 was comparable in all regions: the mean was 8.7 (CI 7.2-10.1) in regions where schools opened on September 22/24 and 8.9 (CI 6.2-11.5) in regions where schools opened on September 14/16 (Figure 4B). In conclusion, we did not find an unequivocal delay between school opening and R_t rise. Conversely, in all Italian regions, R_t starts to increase ~9 days after the election day.

Early increase in Covid19 incidence among adults, not school age individuals during the second wave in the Veneto region.

Because we did not find a strong temporal relation between school openings and the second Covid19 wave in Italy, we decided to understand whether SARS-CoV-2 positivity circulated early in individuals different than children. To this end, we performed a prospective study on datasets extracted from the Veneto Region system of SARS-CoV-2 cases notification. We stratified incidence of newly reported Covid19 cases for age from late August to late October 2020, when overall Covid19 incidence in Veneto increased from ~2/10,000 to ~35/10,000. We first divided the population into infants (0-4 years of age), students (5-19), young adults

(20-34), adults (35-59), seniors (60-74) and elderly (75+) and calculated daily incidence of newly reported cases in these age categories. Demographic details are reported in Table 1. Interestingly, incidence in young adults and adults increased at the end of August and then again at the end of September, whereas it remained very close to baseline in all the other age groups in these two periods (Figure 5A). This result prompted us to increase the granularity of our analysis. We stratified incidence for the classic demographic brackets (we used one single group of 75+ years old individuals as we did not find differences in incidence in groups above age 75). In late August-early September incidence increased among 45 to 49-year-old individuals and albeit less also among the 25 to 39-year-old ones. Conversely, incidence remained very low in the other analyzed age groups. Incidence increased again in the last decade of September in the age groups 45-49 and to a lower extent in the age groups 20-24 and 25-29 (Figure 5B). These data were surprising, as they suggested that at least in Veneto the earliest increase in SARS-CoV-2 positivity occurred in adults, followed by younger individuals, but not in adolescents that were often deemed as potential spreaders because of their high number of social contacts and their presumed laxity in adhering to the infection risk mitigation protocols. We therefore further inspected the temporal distribution of incidence among age classes. We generated a heatmap of the incidence of Covid19 cases in every age group in the 8 weeks under consideration, where low incidence is in green, intermediate incidence values in beige, high incidence in red. Visual inspection of this heatmap confirmed that the earliest increase in incidence occurs not among children or adolescents, but among individuals 20-49 years of age. These individuals appeared to be the drivers of the second wave, as incidence then propagated to individuals of other age categories (Figure 5C). Indeed, by applying a Euclidean distance algorithm to the same matrix used to generate the heatmap, we found that children and adolescents are ranked as the groups closest to the least affected groups by this second Covid19 wave (60-64 and 65-69 years of age). Conversely, individuals 20 to 29, and 45 to

49 years old are the most distant from the protected 60-69 years old individuals (Figure S4). Finally, we compared in Veneto the incidence of SARS-CoV-2 from September 19 to the October 18 among teachers and among the general population of the age group 25-65. We selected this age group because teachers' age is comprised between these two extremes, given the required tertiary education to be enrolled, and the legal retirement age of teachers. Interestingly, incidence among teachers starts to increase after the increase observed in the general population of the same age; moreover, at the end of the period under consideration, incidence among teachers and among the general population aged 25-65 is comparable (12/10,000 vs. 11.1/10,000, Fig. S5).

Altogether, these analyses indicate that in the Italian Veneto region, children and adolescents were not early drivers of the second wave, which was conversely associated with an early increase in incidence among 20-29- and 45-49-years old individuals. Furthermore, teachers were not at greater risk than age matched the general population.

School closures did not alter the rate of R_t decline in Lombardy and Campania

Because we did not find a correlation between school opening and the rise in R_t , we wished to understand whether the opposite, i.e., school closures, impacted on R_t . Again, the territorial differences in the mandate of different NPI in Italy offers a useful paradigm to investigate this possibility. We considered here the two cases of Lombardy, where the Governor mandated closure of high schools from October 26; and Campania, where the Governor mandated the closure of all school grades (including kindergartens) from October 16. Lombardy and Campania together account for 25% of Italy's population, being the first and second most populous regions. These school closures occurred before the national Government implemented a regional risk stratification system to modulate lockdown according to the local epidemiological and hospital stress status (November 6), but after the

mandate for universal mask wearing outside of home (October 14) and in the case of Lombardia after the closure of restaurants, cafes, and bars at 6PM with a nationwide curfew at 10PM (October 23; Table 2). Interestingly, in Lombardy the rate of R_t decline started well before high school closures, in the October 8-15 period (Figure 6A for absolute R_t values and 5B for its first order derivative). In Campania, school closure occurred very close to the moment of R_t decline. Nevertheless, at a careful inspection it is possible to appreciate that R_t started to decline from the October 11-18 period, that is, 5 days before the dates of school closure (Figure 6C for absolute R_t values and 5D for its first order derivative). In the case of Campania, we could also extend our analysis to the overall incidence among students and general population. We found that while incidence dropped among students, because they were no longer attending schools and therefore tested, the overall incidence in the general population continued to increase (Figure S6), reflecting the fact that R_t remained >1 until the 21-28 November period. Altogether, these data indicate that school closures did not impact on the speed of R_t decline in Lombardy and Campania. Furthermore, the increasing trend of Covid19 incidence in the general population observed in Campania was not curtailed by school closures.

Discussion

Whether school reopening contributed to the second wave of Covid19 in Italy was unclear. Here, by analyzing data from Italian regions and schools, we did not find a significant association between school opening and rise of infection in the general population. Our conclusion is based (i) on the finding of lower incidence of SARS-CoV-2 positivity among students than in the general population; (ii) on the lack of association between staggered school reopening in different Italian regions and direction change in reproduction number R_t ; and (iii) on the analysis of the temporal changes in the incidence among different age classes in the Veneto region between late August and late October 2020.

At variance with influenza, where younger individuals seem to represent a reservoir of virus and contribute to its propagation to the general population²³⁻²⁷ SARS-CoV-2 seems to spare school age children and adolescents: clinically, they are mostly paucisymptomatic⁵; from the epidemiology of infection perspective, they are very rarely accounted for as the index case¹¹, indicating that not only they are largely spared from the clinical consequences of the infection, but they are also less likely to transmit it, with this suggesting that spread of COVID-19 within school settings may be limited^{28,29}. Indeed, our data indicate that infection incidence is lower in students of any cycles, compared to the general population. Moreover, at least in the case of elementary school children, contact tracing in schools confirms that they are less likely to transmit the virus, as evidenced by a 29% reduction in the number of secondary cases compared to the number of secondary cases elicited by an index case among teachers. These epidemiological data are in line with the finding that children harbor antibodies against the common other betacoronaviruses, and that these are cross reactive and neutralizing against SARS-CoV-2⁷. Our findings are also consistent with several other reports of very limited spread of COVID-19 between children and from children to adults. In Australia (New South Wales), following COVID-19 positivity of 9 students in primary and

high schools and 9 staff members, only 2 of the 735 students, and 0 of the 128 staff members with whom they had contact were identified as secondary cases. In Ireland, during the first wave, 6 COVID-19 cases were identified in schools (three children and three adults). Among their 1,155 school contacts, zero infections were recorded³⁰. In the Netherlands, ten COVID-19 cases aged <18 had 43 contacts, but nobody was infected, whereas 221 patients older than 18 were associated with 8.3% of infections³¹.

We unexpectedly found higher rates of incidence in teachers and school staff compared to the general population. We ascribe this finding to the meticulous and continuous control of school environments, confirmed by the number of tests performed for each positive case. Indeed, in Campania where schools were open for a mere 17 school days (from September 24 to October 16; school week of 5 days), incidence among teachers and school staff in the September 12-November 7 period is still higher than that in the general population. It would be difficult to ascribe this difference to 17 days of school over a total of 56 days. It cannot be argued that teachers and staff members are more susceptible to infection than the general population; in fact, this increase in the incidence of test positives is not mirrored by an increase in mortality-morbidity that would mark a more susceptible population³².

Decision makers, popular press and public opinion in Italy ascribe the second wave of Covid19 to school reopening. This is often accompanied by deprecating comments on “individual behavior” of adolescents especially, who would not follow the strict rules at school or outside them. However, our data suggest that this common sentiment is not evidence-based, but perhaps grounded on the temporal correlation between school opening (in September) and second wave (in October-November). Indeed, our data do not identify an association between school reopening and rise in R_t analyzed on a regional basis. Because of the staggered school reopening calendar in Italy, we were well positioned to address whether there was an association between the date of school opening and the date of

reproduction number increase. We did not find such association that was conversely present when we analyzed the temporal distance between R_t rise and the election day held in Italy on September 20 (and morning of 21), 2020.

Other reports from across the world are in line with our findings: in Great Britain, staff had higher incidence than students (27 cases [95% CI 23–32] per 100,000 per day among staff compared with 18 cases [14–24] in early years students, 6.0 cases [4.3–8.2] in primary schools students, and 6.8 cases [2.7–14] in secondary school students) and most cases linked to outbreaks were in staff members (154 [73%] staff vs 56 [27%] children of 210 total cases). The median number of secondary cases in outbreaks was one (IQR 1–2) for student index cases and one (1–5) for staff index cases ³³. In Spain as well, the evolution of the global incidence does not suggest significant effects of the reopening of schools. In most cases there was no or a slight increase in pediatric cases, consistent with the diagnostic efforts in schools ³⁴. In Germany, data collected from 53,000 schools and daycares in autumn indicated that only an average of 32 schools one week had more than two positive cases ³⁵

A different question is whether closing schools is efficacious in curtailing viral spread. In some Italian regions analyzed here, school closure was mandated by local authorities and finally in certain regions by the National Government. However, this closure had no effect on the incidence of Covid19 in the general population or in the decline of R_t , which had started before the mandated school closure and that continued with the same speed, irrespective of school closures in Lombardy (partial) and Campania (total). This finding is in line with a literature review of all available studies (n=16) on the efficacy of school closures and other social distancing practices in schools in China and Hong Kong, where the rapidly implemented school closures did not substantially contribute to the control of the spread ¹⁵. In Australia, by comparing data from 25 schools of different grades with those of the general

population, it was found that students and school staff did not contribute to the spread of the virus more than the general population ³⁶. On the other hand, an analysis of the impact of different NPI on the reproduction number R_t across 131 countries found that at day 28 after the implementation, school closures alone could reduce R_t by 15% (R ratio: 0.85, 95%CI: 0.66-1.10), whereas school reopening could increase it by 24% (R ratio: 1.24, 95%CI: 1.00-1.52). However, these estimates are affected by a very large confidence interval, hence are not statistically significant. Moreover, the author themselves raise several words of caution on the limitations of their estimates: for example, they could not consider the different precautions related to the reopening of schools taken by some countries, such as physical distancing within classrooms and masking procedures; they did not consider the impact of school holidays and the effect of reopening different school levels (e.g., elementary and middle schools). Finally, authors analyze the impact of given NPIs by comparing R_t from two arbitrarily drawn periods before and after the implementation of the given NPI. While this approach might be more practical when comparing multiple countries, it is less informative than our analysis performed overall the R_t curve. Interestingly, we found that R_t started declining even before the implementation of any NPI, in all the regions analyzed. In certain cases, like the Province of Trento, the nationally implemented NPI entered in force after R_t had declined below the threshold of 1. These results, while perhaps surprising, are in line with findings from the group of Merler, who analyzed the impact of the national March-May lockdown on R_t in Italy. While they concluded that lockdown reduced R_t and brought it below 1, they admitted that the decline in R_t had started well before the national lockdown was implemented. Visual inspection of their published R_t curves indeed confirms that this extreme NPI did not affect the slope of R_t decline ³⁷.

Closure of schools has dire consequences on children and adolescents motor activity, social interaction, psychological well-being ^{38,39} and psychopathological problems ^{40,41}, on the risk

of obesity ⁴² and screen addiction ⁴³, on the protection from situations of domestic abuse ⁴⁴, and on learning performance.

Our study is strengthened by the several sources of data used. Longitudinal data of regional incidence of SARS-COV-2 positives subjects deposited in the public repository of the Italian Civil Protection, incidence from the Veneto Region system of Covid19 case notification with information by age, and incidence in schools from MI with information for students, teachers and non-teaching staff. Our study also suffers from some limitations. Information on SARS-CoV-2 positive individuals in schools are retrieved by school Principals. Second, these data represent the situation of the whole school, not of the single subjects. Third, we do not know whether data on number of SARS-COV-2 positives subjects deposited in the public repository of the Italian Civil Protection suffer from delays in reporting or even worse from differences in reporting criteria by the different regions. It shall be however noted that the nationwide R_t computed on the total positive cases and that on the cases by diagnostic suspicion are very similar and that their temporal trends are superimposable, thus reinforcing the strength of the analysis presented here.

In conclusion, our analysis does not find an association in Italy between dates of school opening and the increase in SARS-CoV-2 R_t . Reciprocally, school closures did not affect the rate of R_t decline. Also, the incidence of SARS-CoV-2 among students is lower than that in the general population; In addition, the incidence among teachers is greater than the incidence in the general population, but comparable to that of recorded in the general population of the same age. Finally, contact tracing in schools resulted in very low frequency of secondary infections found per test, and low frequency of clusters despite a high number of tests every week. Our analysis provides evidence that school openings are not to be considered as a relevant factor influencing the spread of the Covid19 epidemics and that

school closures did not improve the already occurring decline in the reproduction number of Covid19.

Acknowledgments

This work was partially supported by the Italian Ministry of Health with Ricerca Corrente and 5x1000 funds (to SG). Federica Bellerba is a PhD student at the European School of Molecular Medicine (SEMM), Milan, Italy. We thank Dr. Guido Silvestri (Emory University School of Medicine) for his support.

Conflict of interest

None to declare.

References

1. Jackson C, Vynnycky E, Hawker J, Olowokure B, Mangtani P. School closures and influenza: systematic review of epidemiological studies. *BMJ Open* 2013; **3**(2): e002149.
2. Cauchemez S, Ferguson NM, Wachtel C, et al. Closure of schools during an influenza pandemic. *The Lancet Infectious Diseases* 2009; **9**(8): 473-81.
3. Snape MD, Viner RM. COVID-19 in children and young people. *Science* 2020: eabd6165.
4. Zimmermann P, Curtis N. Coronavirus Infections in Children Including COVID-19: An Overview of the Epidemiology, Clinical Features, Diagnosis, Treatment and Prevention Options in Children. *Pediatr Infect Dis J* 2020; **39**(5): 355-68.
5. Hoang A, Chorath K, Moreira A, et al. COVID-19 in 7780 pediatric patients: A systematic review. *EClinicalMedicine* 2020; **24**: 100433.
6. Bunyavanich S, Do A, Vicencio A. Nasal Gene Expression of Angiotensin-Converting Enzyme 2 in Children and Adults. *JAMA* 2020; **323**(23): 2427.
7. Ng KW, Faulkner N, Cornish GH, et al. Preexisting and de novo humoral immunity to SARS-CoV-2 in humans. *Science* 2020; **370**(6522): 1339-43.
8. Viner RM, Mytton OT, Bonell C, et al. Susceptibility to SARS-CoV-2 Infection Among Children and Adolescents Compared With Adults: A Systematic Review and Meta-analysis. *JAMA Pediatrics* 2020.
9. Davies NG, Klepac P, Liu Y, et al. Age-dependent effects in the transmission and control of COVID-19 epidemics. *Nature Medicine* 2020; **26**(8): 1205-11.

10. Hippich M, Holthaus L, Assfalg R, et al. A Public Health Antibody Screening Indicates a 6-Fold Higher SARS-CoV-2 Exposure Rate than Reported Cases in Children. *Med*.
11. Zhu Y, Bloxham CJ, Hulme KD, et al. A meta-analysis on the role of children in SARS-CoV-2 in household transmission clusters. *medRxiv* 2020: 2020.03.26.20044826.
12. Lavezzo E, Franchin E, Ciavarella C, et al. Suppression of a SARS-CoV-2 outbreak in the Italian municipality of Vo'. *Nature* 2020; **584**(7821): 425-9.
13. Forbes H, Morton CE, Bacon S, et al. Association between living with children and outcomes from COVID-19: an OpenSAFELY cohort study of 12 million adults in England. *medRxiv* 2020: 2020.11.01.20222315.
14. Lee B, Hanley JP, Nowak S, Bates JHT, Hébert-Dufresne L. Modeling the impact of school reopening on SARS-CoV-2 transmission using contact structure data from Shanghai. *BMC Public Health* 2020; **20**(1): 1713.
15. Viner RM, Russell SJ, Croker H, et al. School closure and management practices during coronavirus outbreaks including COVID-19: a rapid systematic review. *Lancet Child Adolesc Health* 2020; **4**(5): 397-404.
16. Park YJ, Choe YJ, Park O, et al. Contact Tracing during Coronavirus Disease Outbreak, South Korea, 2020. *Emerg Infect Dis* 2020; **26**(10): 2465-8.
17. Heald-Sargent T, Muller WJ, Zheng X, Rippe J, Patel AB, Kociolek LK. Age-Related Differences in Nasopharyngeal Severe Acute Respiratory Syndrome Coronavirus 2 (SARS-CoV-2) Levels in Patients With Mild to Moderate Coronavirus Disease 2019 (COVID-19). *JAMA Pediatrics* 2020; **174**(9): 902-3.

18. Szablewski CM, Chang KT, Brown MM, et al. SARS-CoV-2 Transmission and Infection Among Attendees of an Overnight Camp - Georgia, June 2020. *MMWR Morb Mortal Wkly Rep* 2020; **69**(31): 1023-5.
19. Stein-Zamir C, Abramson N, Shoob H, et al. A large COVID-19 outbreak in a high school 10 days after schools' reopening, Israel, May 2020. *Eurosurveillance* 2020; **25**(29): 2001352.
20. Cori A, Ferguson NM, Fraser C, Cauchemez S. A New Framework and Software to Estimate Time-Varying Reproduction Numbers During Epidemics. *American Journal of Epidemiology* 2013; **178**(9): 1505-12.
21. Cereda D, Tirani M, Rovida F, et al. The early phase of the COVID-19 outbreak in Lombardy, Italy. *arXiv: Populations and Evolution* 2020.
22. Lordan R, Fitzgerald GA, Grosser T. Reopening schools during COVID-19. *Science* 2020; **369**(6508): 1146-.
23. Worby CJ, Chaves SS, Wallinga J, Lipsitch M, Finelli L, Goldstein E. On the relative role of different age groups in influenza epidemics. *Epidemics* 2015; **13**: 10-6.
24. King JA, Whitten TA, Bakal JA, McAlister FA. Symptoms associated with a positive result for a swab for SARS-CoV-2 infection among children in Alberta. *Canadian Medical Association Journal* 2020: cmaj.202065.
25. Riccardo F, Ajelli M, Andrianou XD, et al. Epidemiological characteristics of COVID-19 cases in Italy and estimates of the reproductive numbers one month into the epidemic. *medRxiv* 2020: 2020.04.08.20056861.

26. Götzinger F, Santiago-García B, Noguera-Julián A, et al. COVID-19 in children and adolescents in Europe: a multinational, multicentre cohort study. *Lancet Child Adolesc Health* 2020; **4**(9): 653-61.
27. Prevention CfDCa. Flu & Young Children. 2020. <https://www.cdc.gov/flu/highrisk/children.htm> (accessed 12/10/2020).
28. Lewis D. Why schools probably aren't COVID hotspots. *Nature* 2020; **587**(7832): 17.
29. Organization WH. Coronavirus disease (COVID-19): Schools. . 2020. <https://www.who.int/news-room/q-a-detail/coronavirus-disease-covid-19-schools>.
30. Heavey L, Casey G, Kelly C, Kelly D, McDarby G. No evidence of secondary transmission of COVID-19 from children attending school in Ireland, 2020. *Eurosurveillance* 2020; **25**(21): 2000903.
31. NRLM. Children and Covid19. 2020. <https://www.rivm.nl/en/novel-coronavirus-covid-19/children-and-covid-19>.
32. Windsor-Shellard BB, Asim. Coronavirus (COVID-19) related deaths by occupation, England and Wales: deaths registered between 9 March and 25 May 2020. 2020.
33. Ismail SA, Saliba V, Lopez Bernal J, Ramsay ME, Ladhani SN. SARS-CoV-2 infection and transmission in educational settings: a prospective, cross-sectional analysis of infection clusters and outbreaks in England. *The Lancet Infectious Diseases*.
34. Sabaté MC, Iglesias PJC, Soler C, et al. Analysis and prediction of COVID-19 for EU-EFTA-UK and other countries. 2020; 2020.

35. Corona-KiTa-Dashboard.

<https://experience.arcgis.com/experience/7520318455c24d0e84e47e5be3c3a61d>

(accessed 12/12/2020).

36. Surveillance NCfIRa. COVID-19 in schools and early childhood education and care services – the Term 3 experience in NSW 2020.

37. Guzzetta G, Riccardo F, Marziano V, et al. Impact of a Nationwide Lockdown on SARS-CoV-2 Transmissibility, Italy. *Emerg Infect Dis* 2020; **27**(1).

38. Wang G, Zhang Y, Zhao J, Zhang J, Jiang F. Mitigate the effects of home confinement on children during the COVID-19 outbreak. *The Lancet* 2020; **395**(10228): 945-7.

39. Xie X, Xue Q, Zhou Y, et al. Mental Health Status Among Children in Home Confinement During the Coronavirus Disease 2019 Outbreak in Hubei Province, China. *JAMA pediatrics* 2020; **174**(9): 898-900.

40. Golberstein E, Wen H, Miller BF. Coronavirus Disease 2019 (COVID-19) and Mental Health for Children and Adolescents. *JAMA Pediatr* 2020; **174**(9): 819-20.

41. Duan L, Shao X, Wang Y, et al. An investigation of mental health status of children and adolescents in china during the outbreak of COVID-19. *J Affect Disord* 2020; **275**: 112-8.

42. Dunton GF, Do B, Wang SD. Early effects of the COVID-19 pandemic on physical activity and sedentary behavior in children living in the U.S. *BMC Public Health* 2020; **20**(1): 1351.

43. Dong H, Yang F, Lu X, Hao W. Internet Addiction and Related Psychological Factors Among Children and Adolescents in China During the Coronavirus Disease 2019 (COVID-19) Epidemic. *Frontiers in Psychiatry* 2020; **11**(751).

44. Silliman Cohen RI, Bosk EA. Vulnerable Youth and the COVID-19 Pandemic. *Pediatrics* 2020; **146**(1).

Figures legends

Figure 1. Incidence of SARS-CoV-2 positive cases is lower among schoolers than in the general population.

Bubble graphs of SARS-CoV-2 incidence between September 12 and November 7 for student in elementary schools (A), middle schools (B) and staff members (teaching and non-teaching, C) in Italian regions and autonomous provinces compared to the incidence in the general population. Size of bubbles is proportional to the measured incidence in the analyzed school populations. The 45° line indicates equivalence between general population and school population incidence. Bubbles are color-coded in a green-yellow-red gradient of analyzed population/general population ratio.

Figure 2. Box-plots of number of test per week per school.

Boxplots of number of tests performed in the indicated type of school per week in students and teachers when they are index cases.

Figure 3. Increases in R_t are not univocally correlated with school opening times in different Italian territories.

Pairwise comparison of median R_t in the indicated 7 days periods ($\pm 5-95\%$ Confidence intervals) in the provinces of Bolzano and Trento (A) and in the indicated regions (B-D). The dates of the school openings in the respective region or province are marked with a bar of the same color. The green bars indicate the day of the entry into force of the Presidential decrees (Decree) detailed in Table 5.

Figure 4. Increases in R_t are univocally correlated with the national election day across all Italian regions.

Box plots show the indicated quantiles for the days of delay between school openings (A) and September 20 national election day (B) and R_t increase in Italian regions clustered by their school opening dates. Date of R_t increase was calculated as the first day of the period when median R_t started an increase sustained in time (>3 consecutives periods).

Figure 5. During the second Covid19 wave incidence of SARS-CoV-2 rises initially among young adults and 45-49 years old individuals in Veneto region.

(A, B) Daily incidence and 7 days adjacent average (7DMA) of SARS-CoV-2 positivity among individuals of the indicated age range. Consistency of the population in each age bracket was from ISTAT and is detailed in Table 6.

(C) Heatmap of weekly incidence of SarsCoV2 in individuals of the indicated age ranges in the Veneto region during the indicated timeframe. The color scale goes from green (low incidence) to beige (medium incidence) and to red (high incidence).

Figure 6. School closures do not affect R_t decrease in Lombardy and Campania.

(A, C) Median R_t in the indicated 7 days periods ($\pm 5-95\%$ Confidence intervals) in Lombardy (A) and Campania (C). Days of school opening and closure are indicated.

(B, D) First order derivative of R_t in Lombardy (B) and Campania (D). Days of school opening and closure are indicated.

Tables

Region	Popula tion	Preschool students (%)		Elementary school students (%)		Middle school students (%)		High school students (%)		Studen ts/ popula tion (%)
Abruzzo	1,305,770	48,397	3.7%	55,893	4.3%	34,881	2.7%	58,308	4.5%	15.1%
Apulia	4,008,296	181,674	4.5%	178,761	4.5%	115,152	2.9%	205,348	5.1%	17.0%
Basilicata	556,934	19,710	3.5%	14,110	2.5%	14,696	2.6%	26,640	4.8%	13.5%
Bolzano	532,080	27,742	5.2%	27,592	5.2%	17,097	3.2%	28,846	5.4%	19.0%
Calabria	1,924,701	80,534	4.2%	85,450	4.4%	54,642	2.8%	77,850	4.0%	15.5%
Campania	5,785,861	254,097	4.4%	232,042	4.0%	183,729	3.2%	324,049	5.6%	17.2%
Emilia-Romagna	4,467,118	207,566	4.6%	203,083	4.5%	87,735	2.0%	200,680	4.5%	15.6%
Friuli-Venezia Giulia	1,211,357	34,169	2.8%	50,546	4.2%	22,584	1.9%	43,230	3.6%	12.4%
Lazio	5,865,544	239,656	4.1%	223,071	3.8%	168,949	2.9%	270,075	4.6%	15.4%
Liguria	1,543,127	59,214	3.8%	48,338	3.1%	38,327	2.5%	64,141	4.2%	13.6%
Lombardy	10,103,969	256,204	2.5%	475,220	4.7%	208,087	2.1%	477,029	4.7%	14.0%
Marche	1,518,400	66,271	4.4%	66,740	4.4%	29,095	1.9%	68,507	4.5%	15.2%
Molise	302,265	12,214	4.0%	11,544	3.8%	7,484	2.5%	10,903	3.6%	13.9%
Piedmont	4,341,375	137,009	3.2%	151,981	3.5%	117,142	2.7%	156,974	3.6%	13.0%
Sardinia	1,630,474	51,318	3.1%	63,957	3.9%	40,501	2.5%	19,189	1.2%	10.7%
Sicily	4,968,410	247,970	5.0%	190,547	3.8%	147,430	3.0%	259,111	5.2%	17.0%
Tuscany	3,722,729	135,146	3.6%	130,853	3.5%	101,638	2.7%	135,178	3.6%	13.5%
Trento	542,739	19,206	3.5%	26,771	4.9%	16,483	3.0%	27,833	5.1%	16.6%
Umbria	880,285	37,363	4.2%	31,048	3.5%	24,520	2.8%	39,075	4.4%	15.0%
Valle D'Aosta	125,501	4,647	3.7%	5,740	4.6%	3,662	2.9%	4,758	3.8%	15.0%
Veneto	4,907,704	225,722	4.6%	223,780	4.6%	142,348	2.9%	233,716	4.8%	16.8%
Italy	60,244,639	2,345,829	4%	2,497,067	4%	1,576,182	3%	2,731,440	5%	15%

Table 1. Demographics of Italian Regions and autonomous Provinces. Data are from the National Statistical Institute (ISTAT). In Italy, elementary school starts at 6, middle school at 11, high school at 14 years of age.

Opening day	9/7	9/14	9/16	9/22	9/24
Region/Autonomous Province	Bolzano	Emilia-Romagna	Friuli Venezia Giulia	Sardinia	Abruzzo
		Lazio			Apulia
		Liguria			Basilicata
		Lombardy			Calabria
		Marche			Campania
		Molise			
		Piedmont			
		Sicily			
		Tuscany			
		Trento			
		Umbria			
		Valle D'Aosta			
		Veneto			

Table 2: Dates of School opening in the 21 Italian Regions and autonomous Provinces (Trento and Bolzano).

REGION	New positive cases among students	% of positive students	New positive cases among teachers	% of positive teachers	New positive cases among other school personnel	% of positive people among other school personnel
Abruzzo	413	0.32%	680	1.35%	224	1.81%
Apulia	778	0.17%	817	1.13%	35	1.17%
Basilicata	267	0.46%	657	1.68%	394	2.25%
Calabria	252	0.12%	209	0.80%	72	0.95%
Campania	1,004	0.16%	212	1.05%	20	0.98%
Emilia Romagna	1,990	0.47%	2,004	2.03%	594	2.53%
Friuli Venezia Giulia	381	0.38%	749	1.53%	24	2.09%
Lazio	1,579	0.31%	832	1.29%	258	1.58%
Liguria	430	0.32%	201	1.36%	78	1.84%
Lombardy	3,791	0.40%	243	1.57%	196	2.16%
Marche	509	0.30%	246	1.27%	171	1.48%
Molise	157	0.49%	1,195	2.61%	335	2.78%
Piedmont	1,215	0.30%	752	1.28%	79	1.52%
Sardinia	429	0.28%	143	1.24%	52	1.38%
Sicily	1,887	0.35%	625	1.47%	258	2.06%
Tuscany	1,117	0.32%	59	1.43%	261	2.05%
Umbria	286	0.28%	89	1.22%	72	1.36%
Veneto	2,068	0.44%	182	1.67%	68	2.19%
TOTAL	18,553	0.32%	9,895	1.52%	3,191	1.96%

Table 3. Incidence in students, teachers, and other school personnel by region, from kindergarten to middle school in the period 23-28 November. Trentino-Alto Adige e Valle d'Aosta do not use the MI national system.

REGION	Kindergarten				Elementary schools			
	New positive cases among students	% of positive students	New positive cases among teachers	% of positive teachers	New positive cases among students	% of positive students	New positive cases among teachers	% of positive teachers
Abruzzo	42	0.20%	54	2.40%	202	0.50%	78	1.70%
Apulia	102	0.16%	146	2.13%	209	0.15%	248	1.67%
Basilicata	10	0.12%	12	1.32%	98	0.61%	29	1.38%
Calabria	42	0.14%	44	1.22%	99	0.16%	75	0.95%
Campania	49	0.06%	152	1.46%	168	0.09%	294	1.38%
Emilia Romagna	103	0.27%	72	1.80%	677	0.49%	255	1.64%
Friuli Venezia Giulia	26	0.25%	31	2.52%	117	0.36%	82	2.17%
Lazio	119	0.21%	149	2.35%	525	0.32%	344	1.68%
Liguria	21	0.14%	39	2.35%	137	0.33%	85	1.67%
Lombardy	240	0.28%	368	3.89%	1,598	0.47%	915	2.39%
Marche	34	0.14%	48	1.74%	129	0.24%	72	1.17%
Molise	11	0.23%	7	1.22%	68	0.69%	25	2.02%
Piedmont	162	0.33%	249	4.26%	396	0.29%	445	2.68%
Sardinia	37	0.21%	32	1.40%	174	0.39%	87	1.44%
Sicily	155	0.20%	144	1.74%	697	0.41%	323	1.58%
Tuscany	118	0.27%	126	2.63%	414	0.39%	254	2.00%
Umbria	54	0.39%	28	1.92%	131	0.41%	65	1.74%
Veneto	117	0.38%	88	2.50%	747	0.47%	308	1.79%
TOTALE	1,442	0.21%	1,789	2.35%	6,586	0.35%	3,984	1.83%

Table 4 Incidence in students and teachers by region in kindergarten and elementary school in the period 23-28 November.

Trentino-Alto Adige e Valle d'Aosta do not use the MI national system

REGION	New positive cases among students	% of positive students	New positive cases among teachers	% of positive teachers
Abruzzo	110	0.43%	70	2.17%
Apulia	175	0.17%	136	1.22%
Basilicata	117	1.03%	31	2.09%
Calabria	81	0.18%	64	1.08%
Campania	188	0.13%	168	1.00%
Emilia Romagna	679	0.70%	160	1.83%
Friuli Venezia Giulia	123	0.52%	39	1.67%
Lazio	642	0.54%	150	1.13%
Liguria	224	0.70%	48	1.43%
Lombardy	1,014	0.44%	454	1.92%
Marche	183	0.47%	64	1.64%
Molise	55	0.78%	17	1.99%
Piedmont	295	0.32%	309	2.98%
Sardinia	157	0.46%	65	1.46%
Sicily	715	0.58%	212	1.36%
Tuscany	327	0.44%	166	2.07%
Umbria	59	0.27%	20	0.85%
Veneto	775	0.71%	179	1.60%
TOTALE	5,919	0.45%	2,352	1.60%

Table 5 Incidence in students and teachers by region in middle school in the period 23-28 November. Trentino-Alto Adige e Valle d'Aosta do not use the MI national system

REGION	Cases of quarantine among students	% of quarantine among students	Cases of quarantine among teachers	% of quarantine among teachers	Cases of quarantine among other personnel	% of quarantine among other personnel
Abruzzo	2,532	1.95%	308	2.68%	55	2.71%
Apulia	7,574	1.64%	816	1.92%	521	2.22%
Basilicata	455	0.79%	107	1.47%	164	2.17%
Calabria	1,556	0.74%	374	1.43%	64	1.70%
Campania	1,099	0.18%	620	0.86%	80	1.54%
Emilia Romagna	9,969	2.36%	1,231	2.69%	247	2.72%
Friuli Venezia Giulia	2,421	2.41%	1,140	2.91%	330	2.73%
Lazio	13,268	2.57%	1,742	2.96%	87	2.80%
Liguria	3,886	2.88%	407	3.73%	34	2.97%
Lombardy	23,599	2.51%	434	2.94%	347	2.77%
Marche	5,273	3.09%	771	3.83%	388	3.14%
Molise	571	1.77%	1,077	2.20%	430	2.46%
Piedmont	7,545	1.89%	107	2.59%	430	2.63%
Sardinia	4,221	2.78%	489	3.16%	338	2.92%
Sicily	8,280	1.54%	1,197	1.86%	66	2.21%
Tuscany	9,187	2.65%	1,510	3.01%	359	2.81%
Umbria	1,728	1.70%	395	2.05%	100	2.36%
Veneto	8,598	1.84%	2,247	2.28%	131	2.48%
TOTALE	111,762	1.92%	14,972	2.30%	4,171	2.56%

Table 6 Quarantines in students, teachers and other personnel by region, from kindergarten to middle school in the period 23-28 November. Trentino-Alto Adige e Valle d'Aosta do not use the MI national system.

	Student as index case LSmeans 95%CI	Teacher as index case LSmeans 95%CI	P-test
Kindergarten	0.78% (0.45%, 1.20%)	0.71% (0.33%, 1.22%)	0.81
Elementary school	0.68% (0.48%, 0.91%)	0.98% (0.64%, 1.39%)	0.22
Middle school	0.74% (0.53%, 0.97%)	0.90% (0.51%, 1.40%)	0.50

Table 7. Incidence rates of secondary infections identified during activity of contact tracing in Italian Schools (from 23 of November to 5 of December 2020).

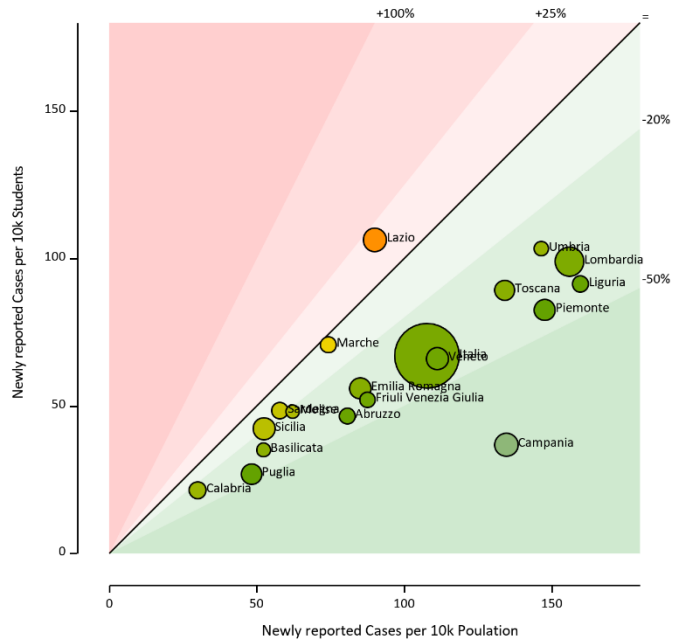
Incidence rates of secondary infections are defined as number of cases/number of tests occurring the same week after a SARS-COV-2 positive student or teacher was found. LSmeans, 95%CI and P-values of rate of secondary infections per institute and week are estimated with multivariable generalized linear regression model.

	Type of school	n. schools	Mean number of tests	Standard deviation
Student Index case	Kindergarten	531	9	13
	Elementary	873	16	20
	Middle schools	753	17	21
Teacher Index case	Kindergarten	465	7	15
	Elementary	540	13	25
	Middle schools	338	12	26

Table 8. Activity of contact tracing following a positive case among students and teachers in Italian Schools (from 23 of November to 5 of December 2020). Mean and standard deviation of number of tests per institute

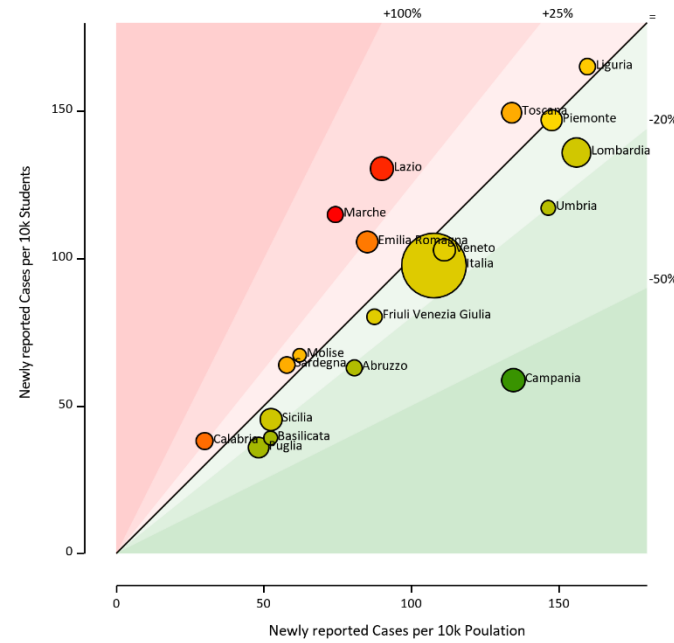
A

Newly Reported SARS-CoV-2 Positive Cases between September 12 and November 7
Students - 6 to 13 years



B

Newly Reported SARS-CoV-2 Positive Cases between September 12 and November 7
Students - 14 to 18 years



C

Newly Reported SARS-CoV-2 Positive Cases between September 12 and November 7
All the Staff

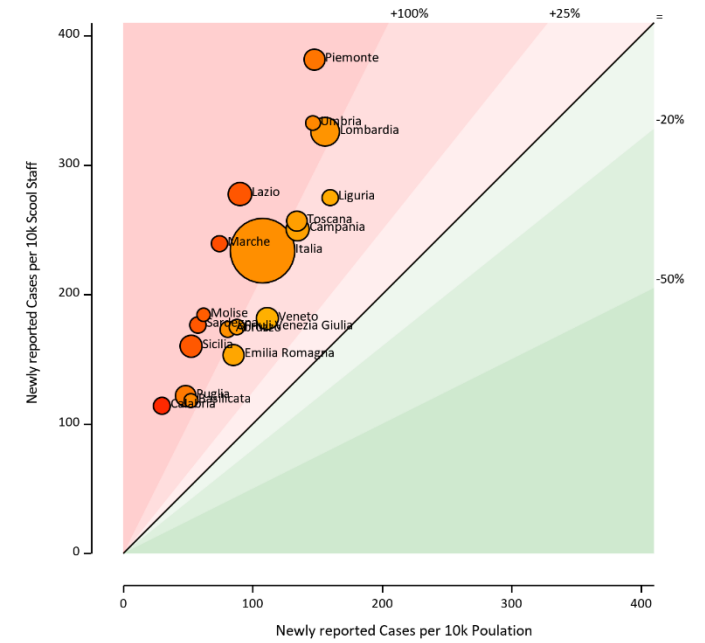


Fig 1

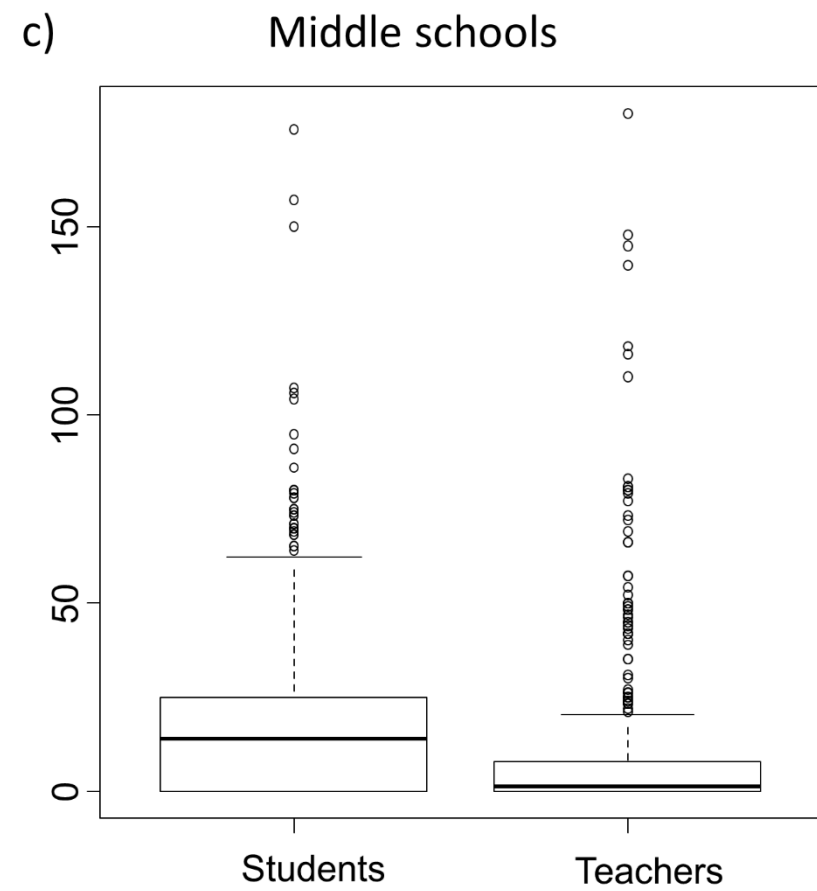
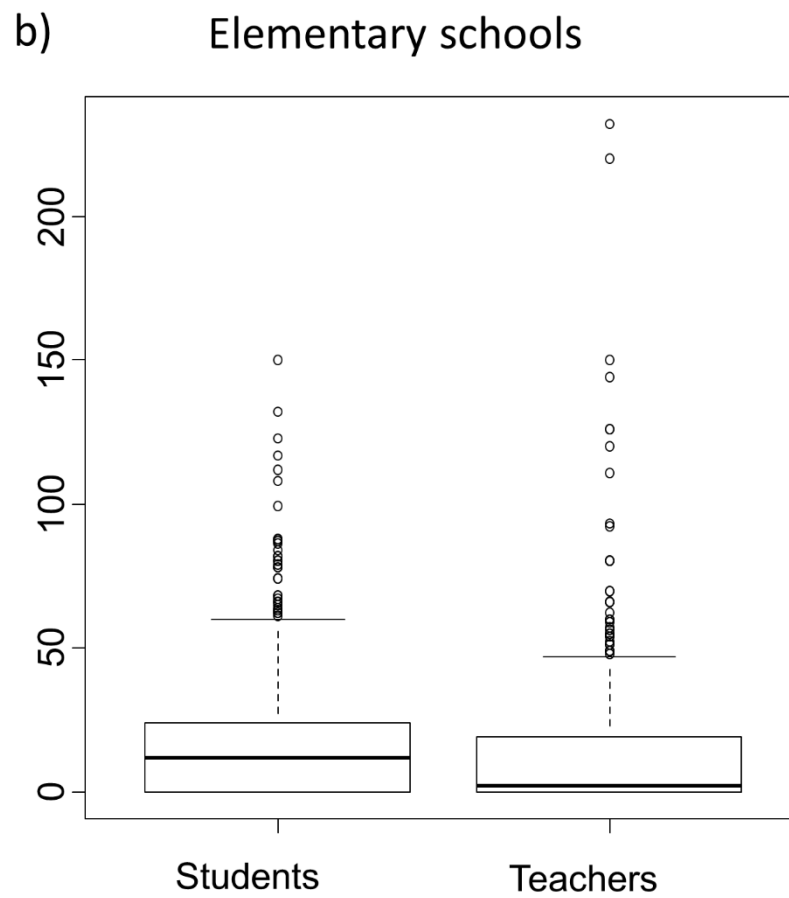
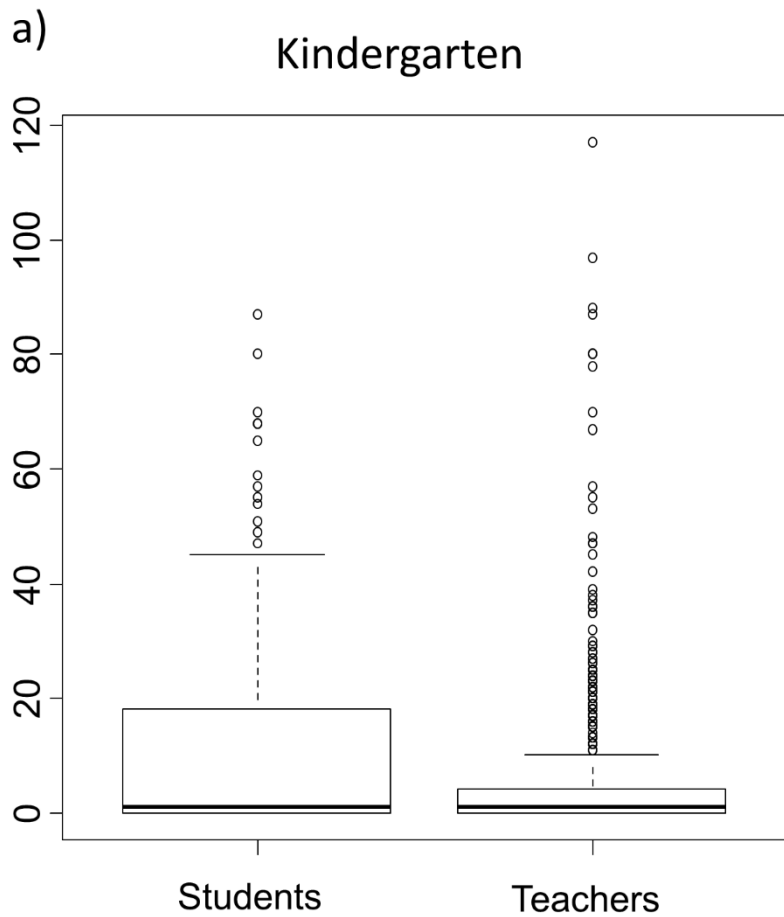


Fig 2

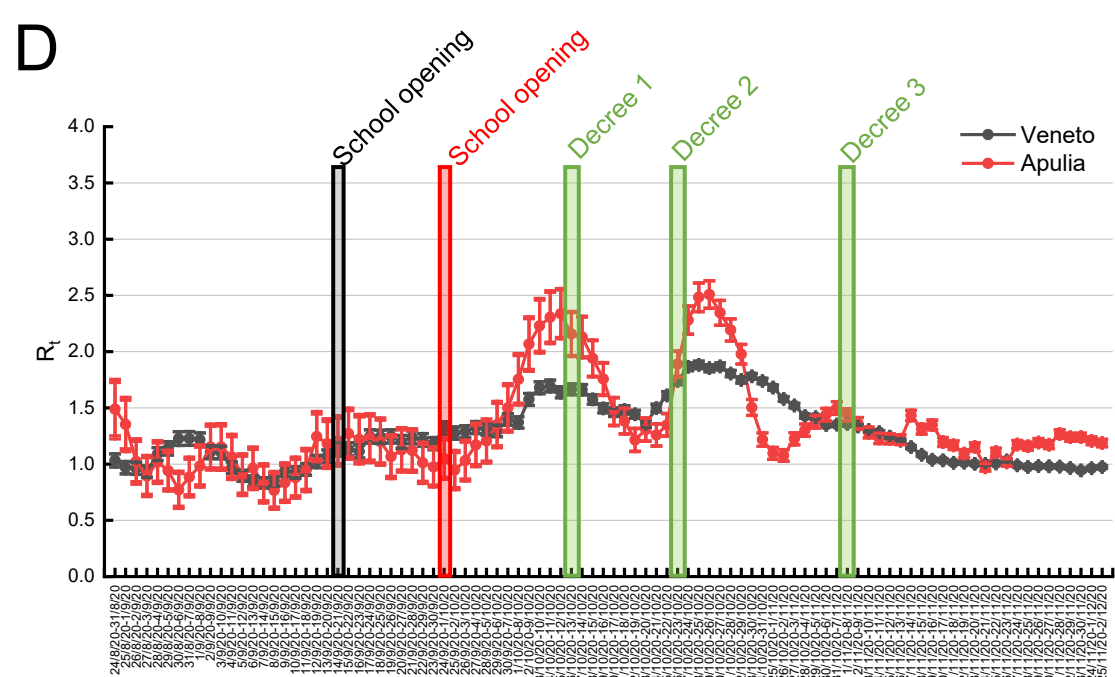
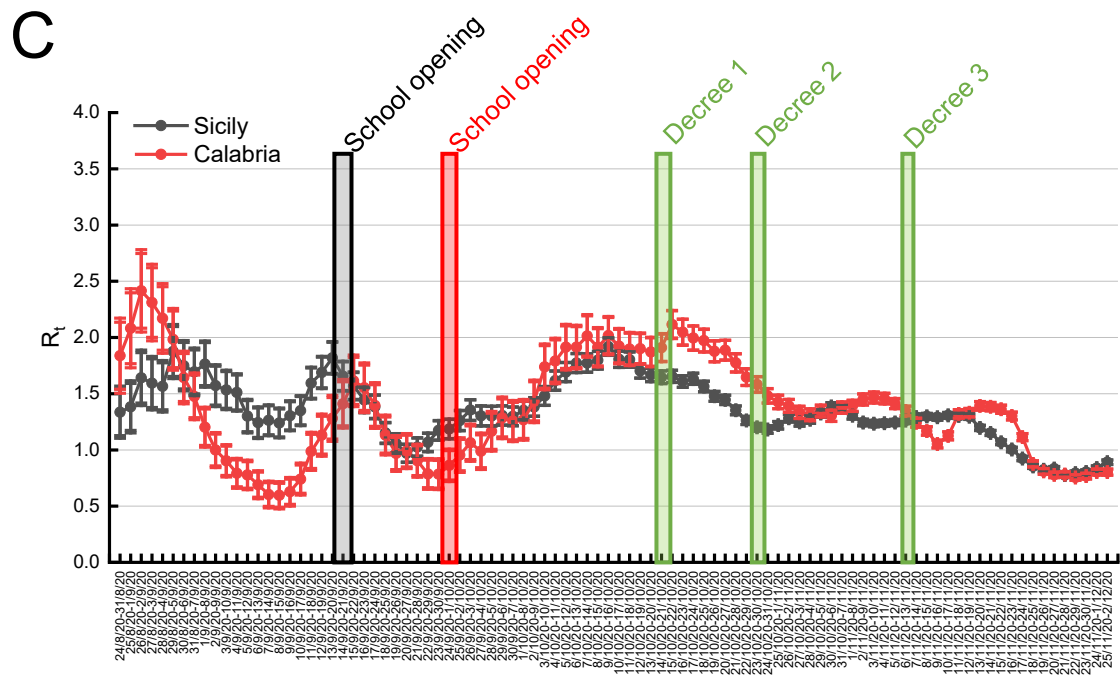
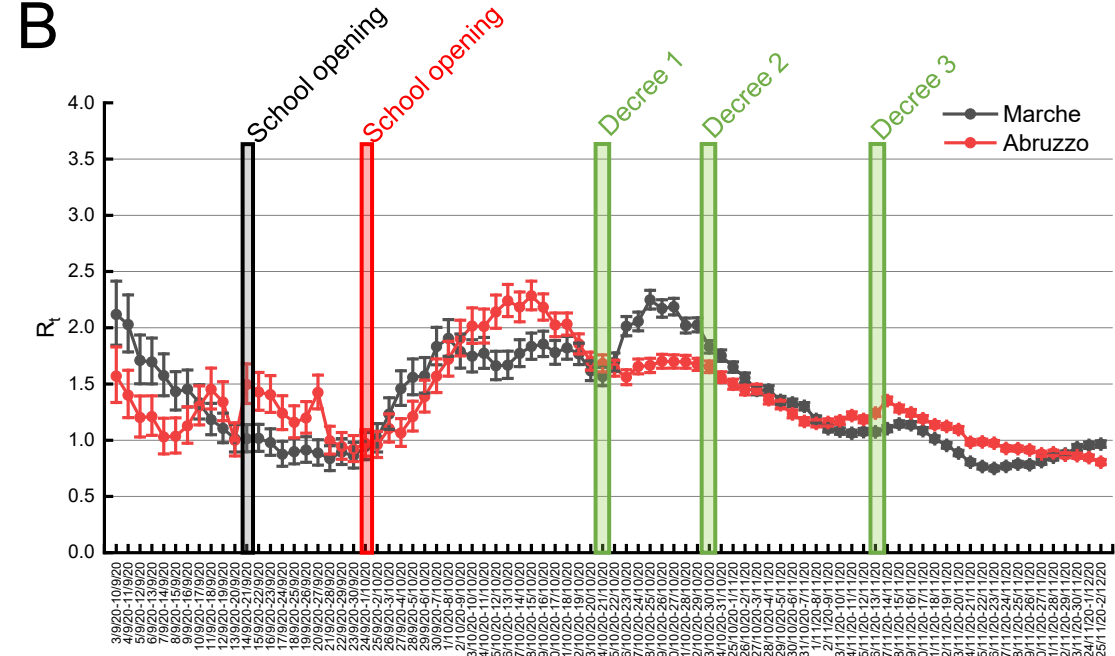
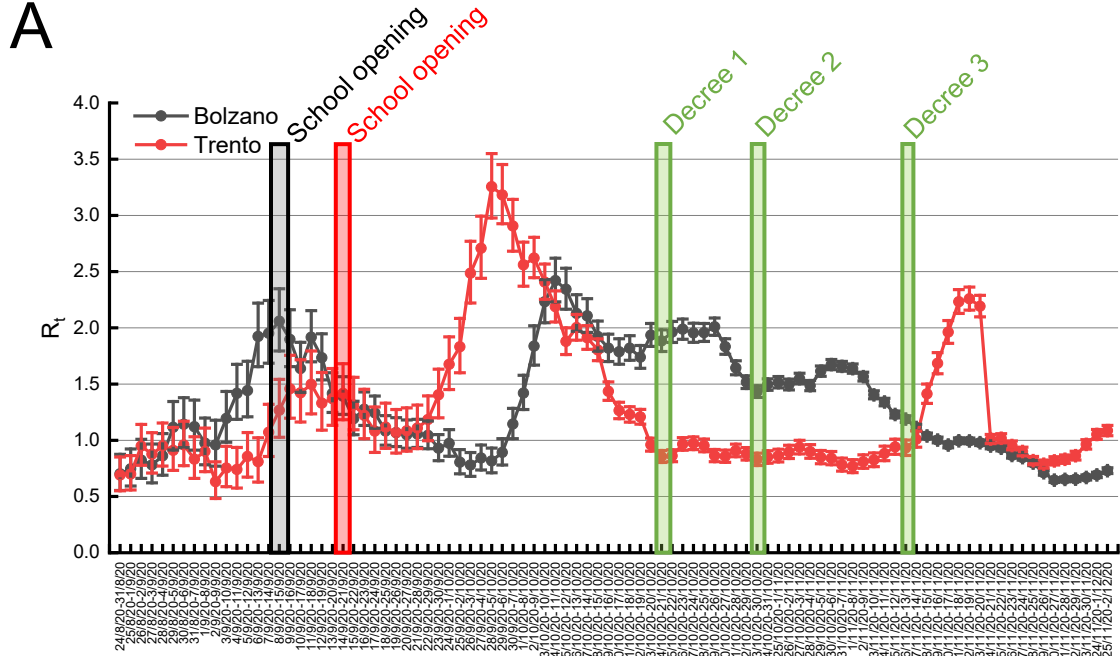


Fig 3

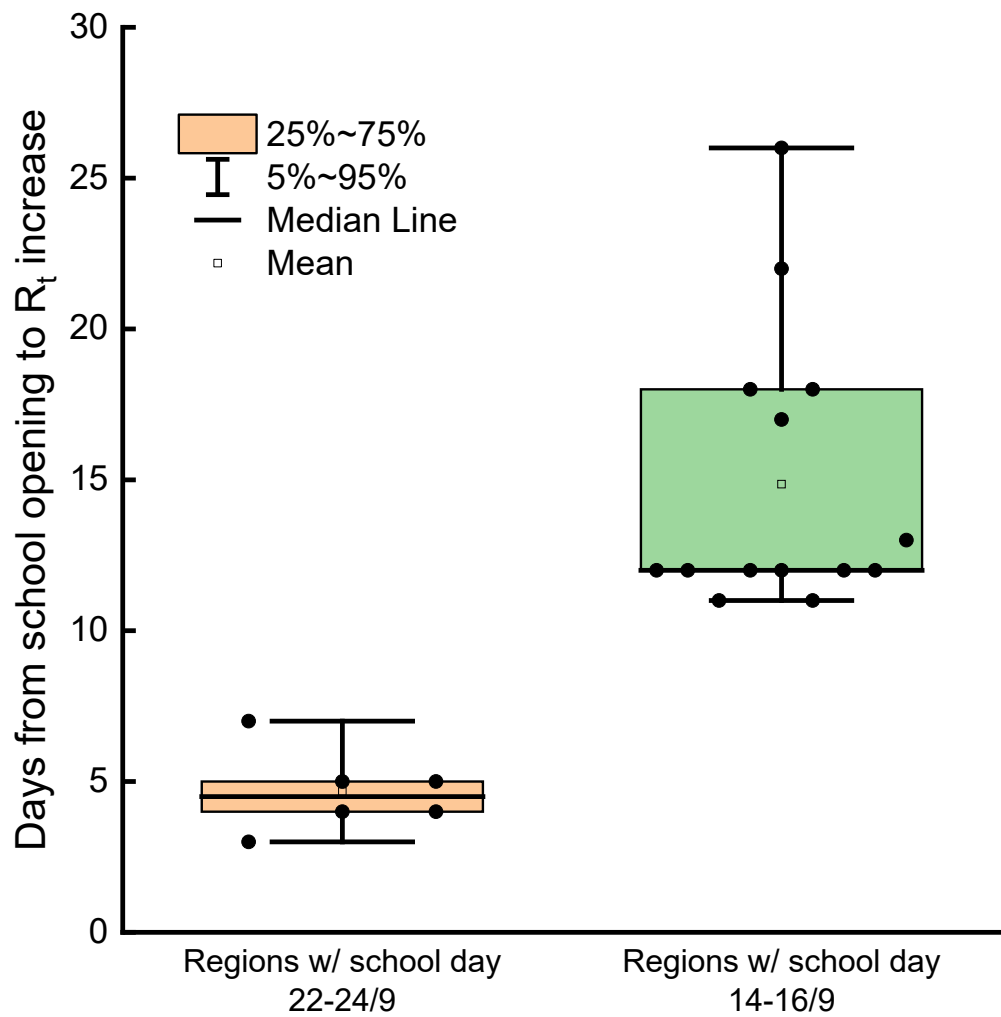
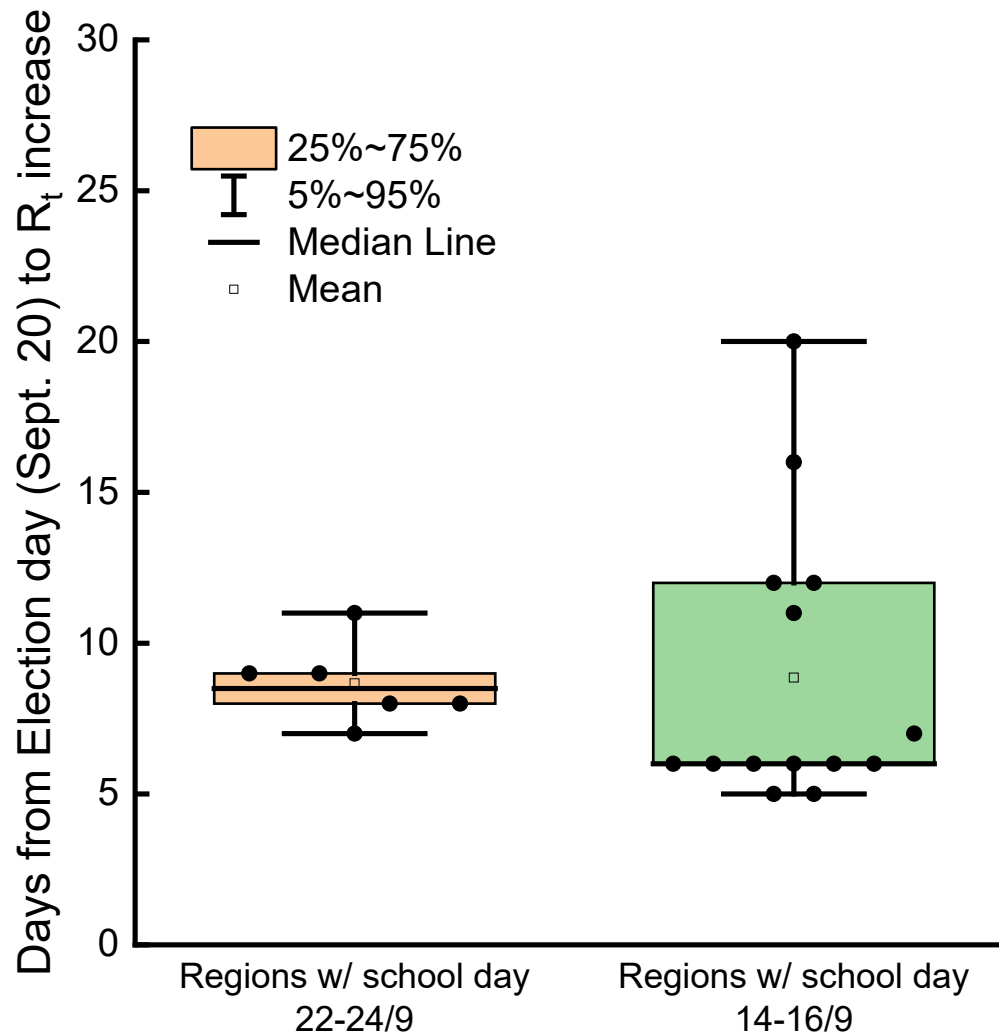
A**B**

Fig 4

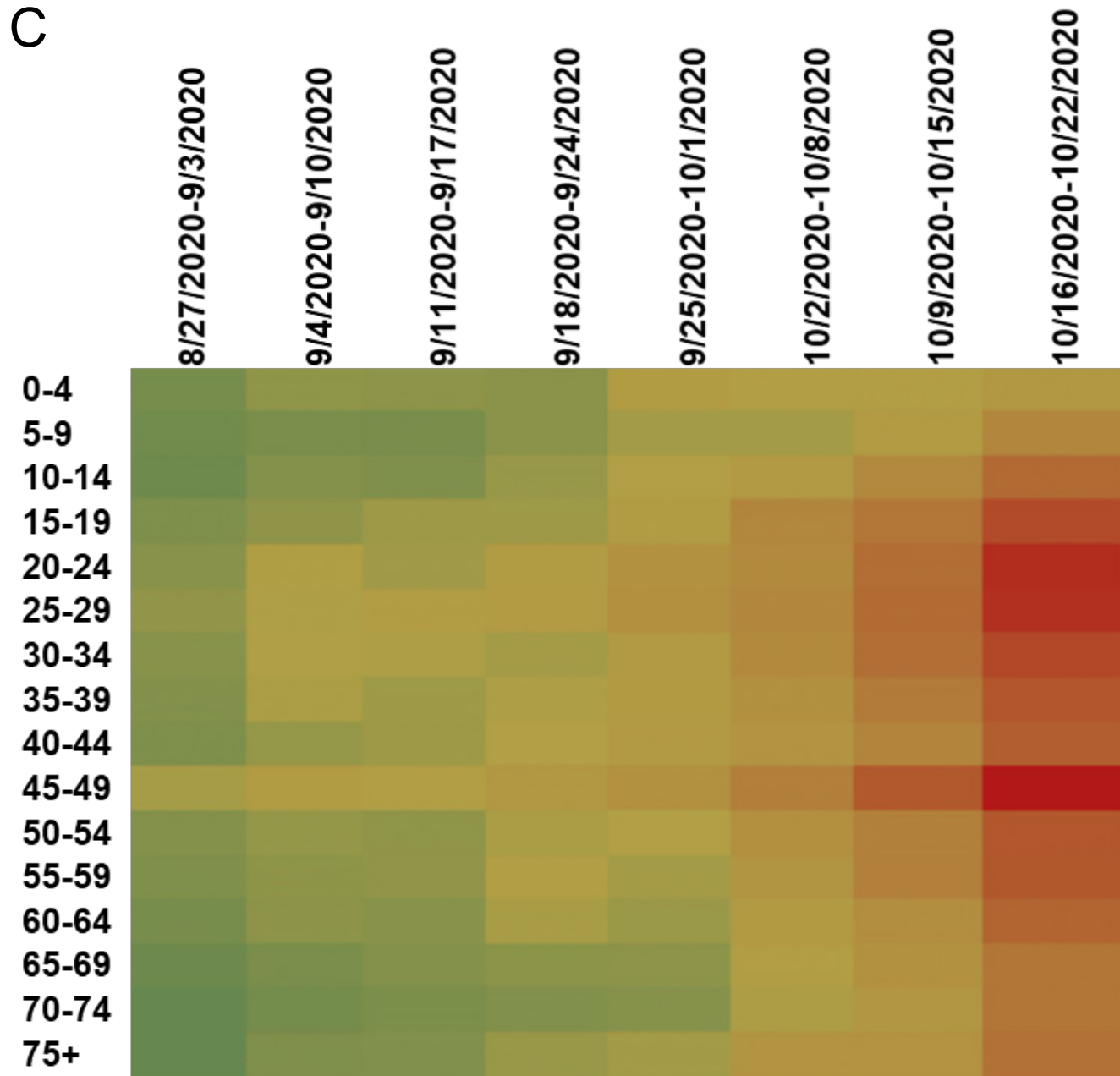
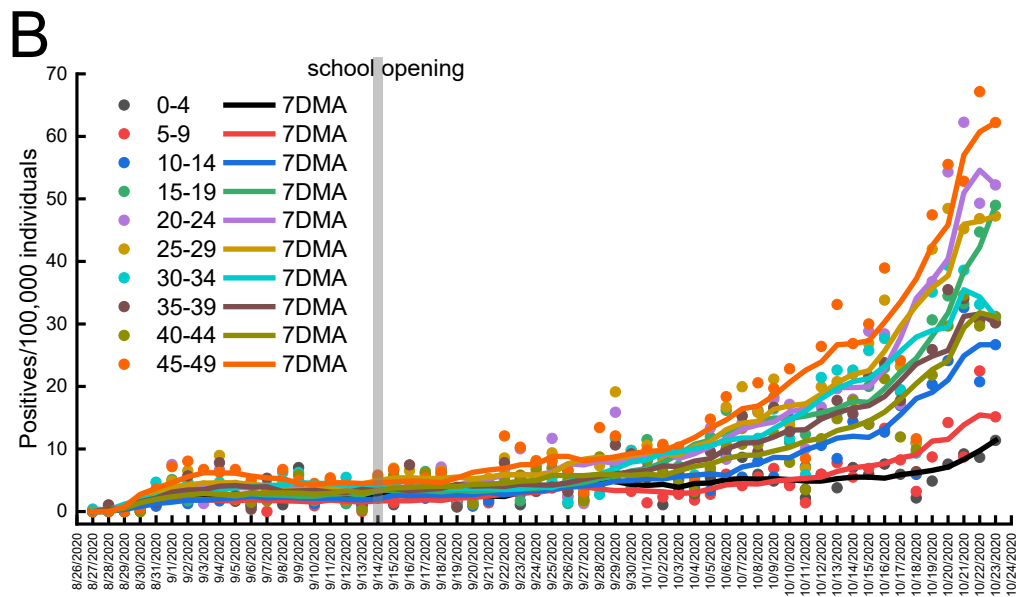
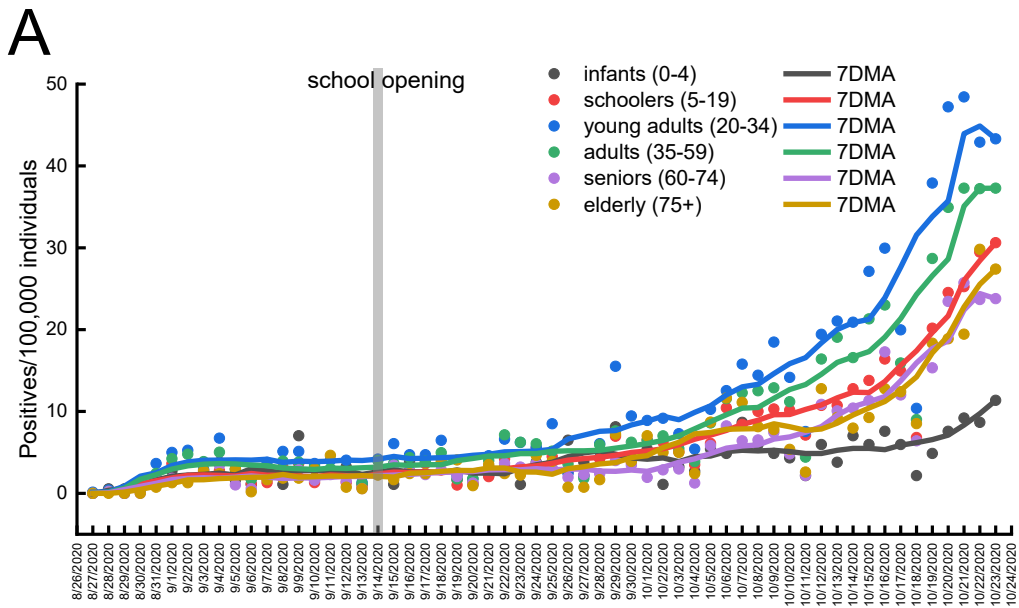


Fig 5

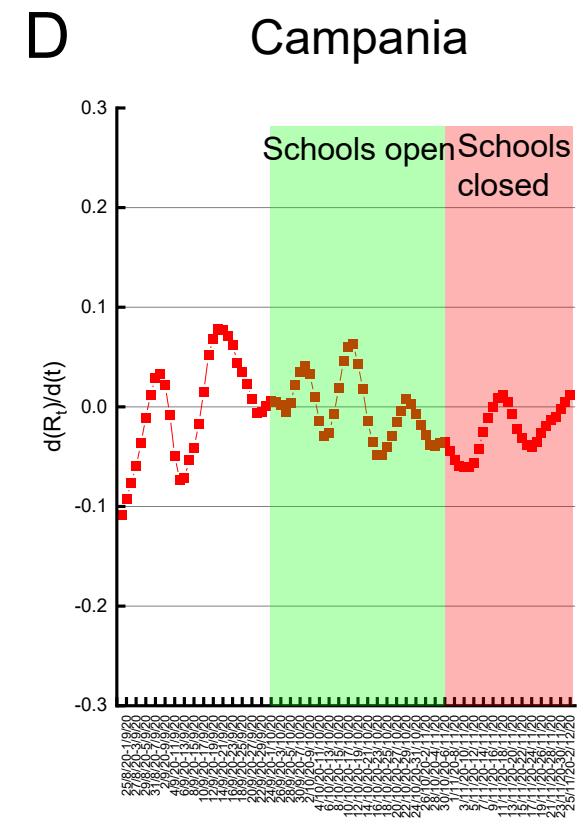
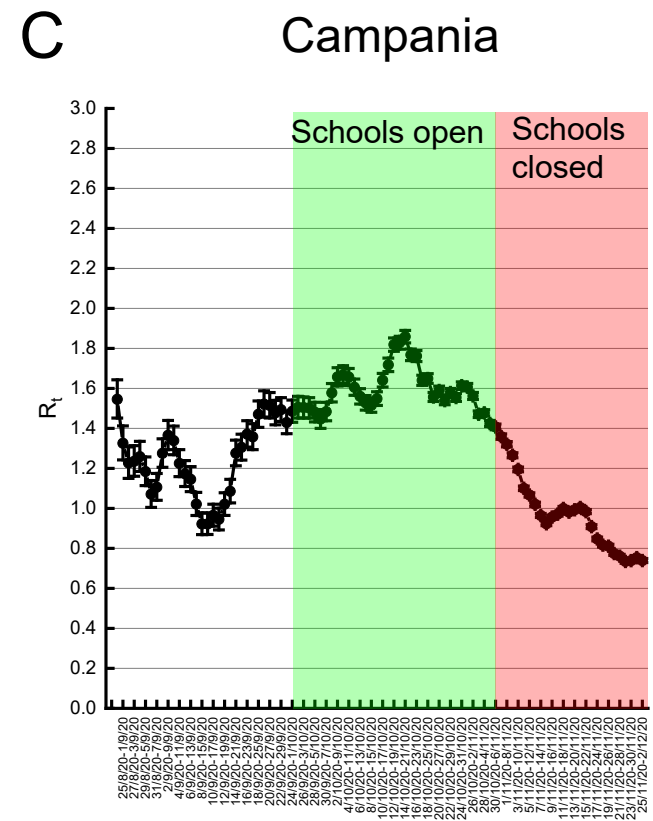
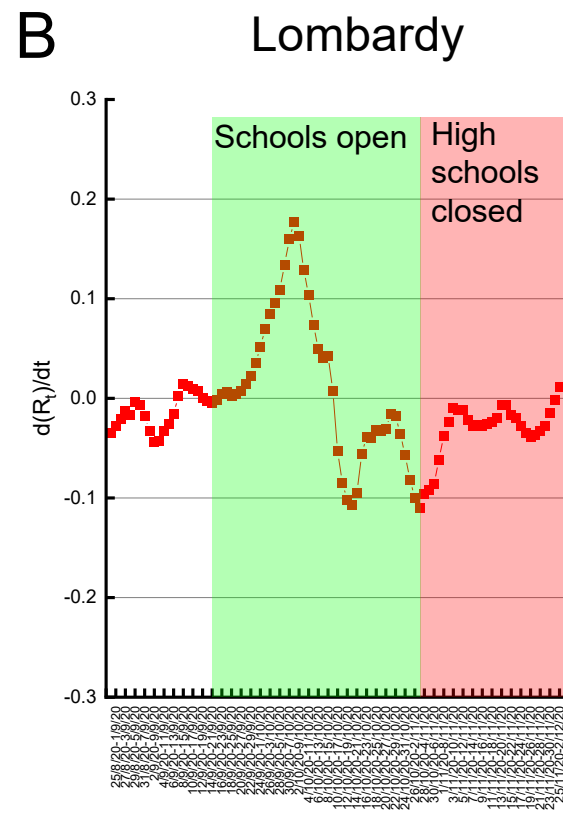
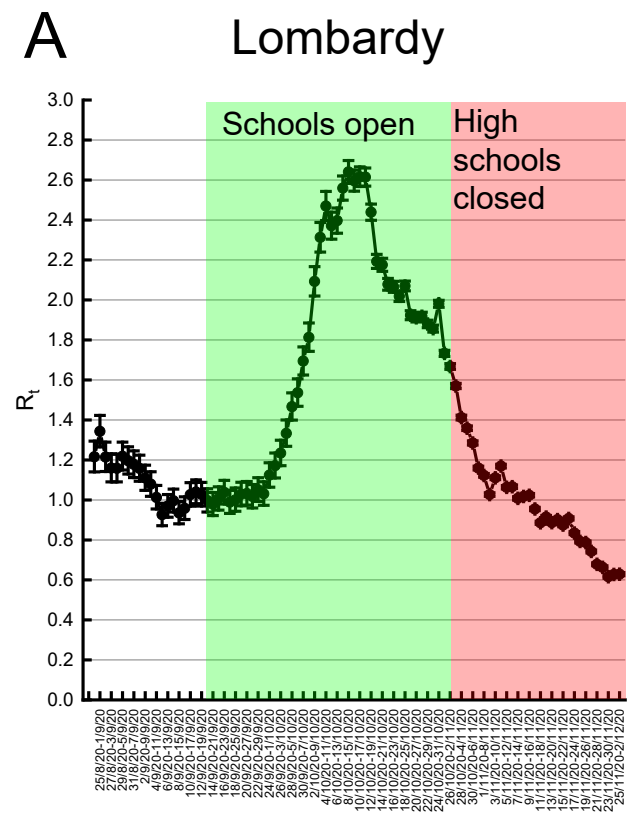


Fig 6