

Rapid detection of SARS-CoV-2 with Cas13

Shreeya Agrawal^{*1,2}, Alison Fanton^{*1,2,3}, Sita S. Chandrasekaran^{*1,2,3}, Noam Prywes², Maria Lukarska^{2,4}, Scott B. Biering⁵, Dylan C. J. Smock^{2,4}, Amanda Mok⁶, Gavin J. Knott^{2,4,7}, Erik Van Dis⁴, Eli Dugan^{2,4}, Shin Kim^{2,4}, Tina Y. Liu^{2,4}, Eva Harris⁵, Sarah A. Stanley^{8,4}, Liana F. Lareau^{1,2}, Jennifer A. Doudna^{2,4,9,10,11,12,†}, David F. Savage^{4,†}, Patrick D. Hsu^{1,2,†}

1 Department of Bioengineering, University of California, Berkeley, Berkeley, CA, USA.

2 Innovative Genomics Institute, University of California, Berkeley, Berkeley, CA, USA

3 University of California, Berkeley—University of California, San Francisco Graduate Program in Bioengineering, Berkeley, CA, USA

4 Department of Molecular and Cell Biology, University of California, Berkeley, CA, 94720, USA

5 Division of Infectious Diseases and Vaccinology, School of Public Health, University of California, Berkeley, Berkeley, CA, USA

6 Center for Computational Biology, University of California, Berkeley, Berkeley, CA, USA

7 Monash Biomedicine Discovery Institute, Department of Biochemistry and Molecular Biology, Monash University, Victoria 3800, Australia

8 School of Public Health, University of California, Berkeley, CA 94720, USA

9 Howard Hughes Medical Institute, University of California, Berkeley, Berkeley, CA, USA.

10 Department of Chemistry, University of California, Berkeley, Berkeley, CA, USA.

11 Molecular Biophysics and Integrated Bioimaging Division, Lawrence Berkeley National Laboratory, Berkeley, CA, USA.

12 Gladstone Institute of Data Science and Biotechnology, Gladstone Institutes, San Francisco, CA, USA.

* These authors contributed equally to this work

† Correspondence should be addressed to P.D.H., D.F.S & J.A.D (e-mail: to

pdhsu@berkeley.edu, savage@berkeley.edu, doudna@berkeley.edu

Summary

To combat disease outbreaks such as the COVID-19 pandemic, flexible diagnostics for rapid viral detection are greatly needed. We report a nucleic acid test that integrates distinct mechanisms of DNA and RNA amplification optimized for high sensitivity and rapid kinetics, linked to Cas13 detection for specificity. We paired this workflow, termed Diagnostics with Coronavirus Enzymatic Reporting (DISCoVER), with extraction-free sample lysis using shelf-stable reagents that are widely available at low cost. DISCoVER has been validated on saliva samples to incentivize frequent testing for more widespread community surveillance and robustly detected attomolar levels of SARS-CoV-2 within 30 minutes, while avoiding false positives in virus-negative saliva. Furthermore, DISCoVER is compatible with multiplexed CRISPR probes to enable simultaneous detection of a human gene control or alternative pathogens.

* * *

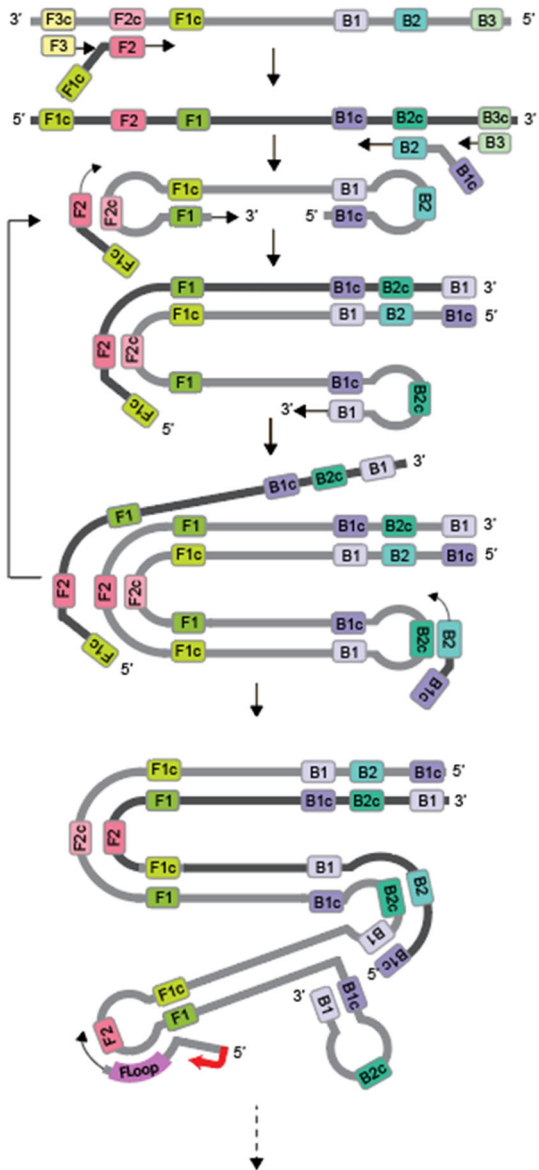
Supplementary Materials

Supplemental Table 1: LAMP primer sets screened, Related to Figure 2

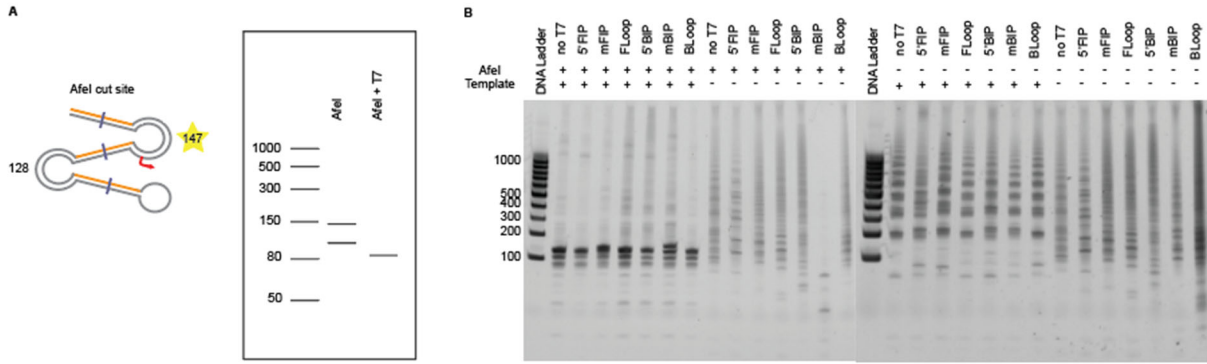
Lamp Primer Set	Time to Amplification (min)	NTC- Amplification time delta (min)	Amplicon length (nt)	Reference
Orflab Set 1	11.6	21.3	9	(Rabe and Cepko 2020)
N Set 2	12.2	28.7	26	(Joung et al., n.d.)
N Set 1	12.5	33.1	46	(Broughton et al. 2020)
Nsp3 Set 1	13.2	30.0	1	(Park et al. 2020)
Orflab Set 2	14.8	25.4	1	(Yu et al. 2020)
N Set 3	14.5	27.1	27	(Zhang et al. 2020)
N Set 4	15.7	25.4	27	(Zhang et al. 2020)
Orflab Set 3	16.7	21.5	0	(Lamb et al., n.d.)
E Set 1	18.0	27.6	60	(Broughton et al. 2020)

Supplemental Table 2: LAMP, rLAMP, qRT-PCR, and Cas13 sequences

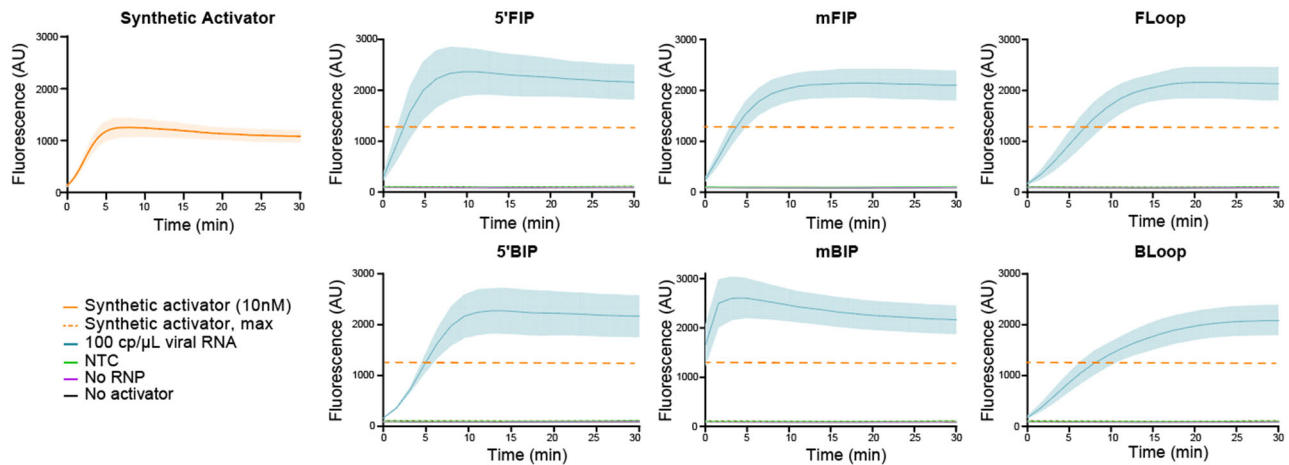
See attached file



Supplemental Figure 1. rLAMP with T7-Bloop primer mechanism.



Supplemental Figure 2. Validation of rLAMP products. **A.** Schematic of primary mBIP rLAMP products and sizes upon AfeI digestion (left). Virtual gel depicting expected AfeI restriction digest bands (147 nt, 128 nt) and resulting transcription bands of mBIP rLAMP products. Only the 147 nt product is expected to contain the T7 promoter, and thus produce an ~85nt RNA product upon transcription. **B.** Restriction-digestion of each rLAMP product with each primer set containing the different T7 insertion positions.



Supplemental Figure 3: Cas13 detection on all T7 insertion locations, with T7 transcription and Cas13 detection occurring in the same reaction. The maximum fluorescence of the synthetic activator at 10 nM is plotted (dashed line). Values are mean \pm SD with $n = 3$. NTC, no template control. RNP, ribonucleoprotein.

Methods

CRISPR-Cas direct nucleic acid detection

For *Lachnospiraceae* bacterium ND2006 Cas12a (LbCas12a), crRNA and the activatorDNA were synthesized via IDT. Detection with Cas12a was performed using 1X of NEB 2.1 buffer (B7202S), 100nM of LbCas12a protein, 100nM crRNA, varying concentration (100nM, 100nM, 10nM, 1nM, 100pM, 10pM) of dsDNA activator, and 200nM of Dnase Alert (IDT). LbCas12a and crRNA was pre-mixed at 10X concentration in 1:1 molar ratio and incubated at RT for 15 minutes before adding it to the reaction. The reaction was heated at 37 °C with 15 sec interval detection with a Tecan Spark multimode microplate reader. For background subtraction, the fluorescence values of the no-activator reaction were subtracted from the fluorescence values of sample reactions at each time point. Maximum fluorescence was obtained by mixing DNase I and 200nM DNaseAlert with 1X NEB 2.1 buffer. This saturated maximum fluorescence value was divided in half; time to reach this half-maximum fluorescence was calculated for each concentration of activator.

For *Leptotrichia buccalis* Cas13a (LbuCas13a), the crRNA and the activator were commercially synthesized from Synthego. Detection with Cas13a was performed using 1X of Cas13 reaction buffer, 100nM of LbuCas13a protein, 100nM crRNA, varying concentrations (100nM, 100nM, 10nM, 1nM, 100pM, 10pM) of ssRNA, and 200nM of Cas13 reporter (IDT). LbuCas13a and crRNA was premixed at 10X concentration in 1:1 ratio and incubated at room temperature for 15 minutes before adding it to the reaction. The rest of the reaction, and time to half-maximum fluorescence, was performed or analyzed as described above. Maximum fluorescence was obtained by mixing RNase A and 200nM Cas13 reporter with 1X buffer. 5X Cas13 reaction buffer (pH 6.8) is composed of 100mM HEPES-Na pH 6.8 (Sigma), 250mM KCl (Sigma), 25mM MgCl₂ (Sigma), and 25% glycerol (Thermo Fisher).

LbuCas13 protein production

The expression and purification of *Leptotrichia buccalis* Cas13a (LbuCas13a) was performed as previously described (East-Seletsky et al. 2017) with modifications, summarized here: His₆-MBP-TEV-tagged Cas13a was prepared in *E. coli* Rosetta2 (DE3) grown in TB at 37°C. At an OD₆₀₀ of 0.6–0.8, cultures were cooled on ice for 15 minutes prior to induction with 0.5 mM isopropyl β-D-1-thiogalactopyranoside (IPTG) and expression overnight at 16°C. Cell pellets measuring close to 10 mL in a 50 mL falcon tube were resuspended in 100 mL of Lysis buffer each. Soluble His₆-MBP-TEV Cas13a was clarified by centrifugation at 15,000 g, then loaded onto a 5 mL HiTrap NiNTA column (GE Healthcare) and eluted over a linear imidazole (0.01–0.3 M) gradient via FPLC (ÄKTA Pure). Following overnight dialysis and TEV digestion, LbuCas13a underwent purification by ion exchange and removal of MBP (5 mL HiTrap SP, MBP trap HP, GE Healthcare). Finally, size-exclusion chromatography was performed (S200 16/60, GE Healthcare) with 1 mM TCEP supplemented into the gel filtration buffer and peak fractions were pooled, concentrated and aliquoted into PCR strip tubes then snap frozen in LN₂.

LbCas12a protein production

The expression and purification of *Lachnospiraceae* bacterium ND2006 Cas12a (LbCas12a) was performed as previously described with the addition of 1mM EDTA in the dialysis buffer (Knott et al. 2019).

LAMP and rLAMP reactions

LAMP and rLAMP DNA amplification reactions were conducted with 2X LAMP Mastermix (NEB, E1700), 0.4 μ L LAMP dye (NEB, E1700), 2 μ L of 10X primer mix (IDT; 16 μ M of FIP/BIP; 4 μ M Floop/Bloop; 2 μ M of F3/B3), and 7.6 μ L of sample. 8 μ L of sample was added in reactions in which no dye was added. Detection was performed at 65 °C for 30 - 60 min in a CFX96 Touch Real-Time PCR machine (Bio-Rad). Time to threshold was calculated using single threshold analysis mode. Limit of detection for LAMP was determined as the concentration where there was amplification observed with at least 95% of the samples.

Twist Synthetic SARS-CoV-2 RNA Control 2 (Twist Bioscience, SKU 102024) was used as a template to perform the primer screen and establish LOD ranges. The volume of template to be used and the final concentration of template in the reaction was calculated based on the initial concentration provided by the vendor as 10^6 cp/ul.

rLAMP assay development

Restriction digestion of rLAMP DNA products was performed on 3 μ L of amplified rLAMP product using 2 μ L of AfeI (NEB R0652L), 2 μ L 10X CutSmart Buffer, and 13 μ L of water. This 20 μ L of reaction was heated at 37 °C for 30 minutes. Undigested and digested rLAMP products were treated with 4 μ L 1u/ μ L RQ DNase I and 1 μ L of 10X reaction buffer (Promega, M6101). The reaction was heated at 37 °C for 30 minutes, 1 μ L of STOP solution (Promega M6101) was added, and incubated at 65 °C for 10 minutes. rLAMP products were analyzed using 15% TBE-Urea gels (Thermo Fisher, EC68855BOX).

Direct saliva lysis

SARS-CoV-2 negative saliva (Lee Biosolutions, 991-05-S-25) was used to check compatibility of saliva with the DISCOVER workflow. All saliva samples were collected prior to November 2019 as per vendor. When viral synthetic RNA was used, Twist Synthetic SARS-CoV-2 RNA Control 2 (Severe acute respiratory syndrome coronavirus 2 isolate Wuhan-Hu-1) was spiked in the commercial saliva and used as a template for mock samples. For limit-of-detection determination, SARS-CoV-2 viral seedstocks were spiked in negative saliva background under BSL-3 containment and used as a template for mock samples.

Commercial saliva was mixed with lysis reagents and heated at 75 °C for 30 minutes using a heat block. Twist synthetic RNA was added after completion of heat inactivation of saliva. Viral seed stocks were spiked in saliva in BSL3 facility prior to heat inactivation. Inactivating Reagent 1

was 2.5mM TCEP /1mM EDTA at 1X concentration when mixed with saliva. Inactivating Reagent 2 was 100mM TCEP/1mM EDTA at 1X concentration when mixed with saliva. Inactivating Reagent 3 was Quickextract DNA (Lucigen QE09050), Inactivating Reagent 4 was Quickextract RNA (Lucigen QER090150), and Inactivating Reagent 5 was RNA/DNASHield (Zymo 76020-420).

Limit of detection (LOD) determination

To determine the LOD, SARS-CoV-2(USA-WA1/2020; BEI Resources, NR-52281) viral stocks amplified once in Vero-E6 cells (ATCC) was diluted in media (DMEM + 10% FBS + 1% Penn/Strep) to obtain various concentrations, spiked into saliva, and inactivated by adding 1X of Low TCEP/EDTA inactivating reagent and heating the samples at 75 °C. The dilutions of virus in media were inactivated by heating at 75 °C for 30 minutes to comply with EH&S requirements (UC Berkeley) and RT-qPCR was performed using Luna® Universal Probe One-Step RT-qPCR Kit (NEB E3006) and E gene-targeting primers to determine the final concentration of viral RNA. Synthetic genomic RNA fragments (Twist Synthetic SARS-CoV-2 RNA Control 2) were used to obtain a standard curve for the calculations. The mock sample was detected as positive if the fold change (ratio of fluorescence value of sample to fluorescence value of no template control) is greater than 5 within 5 minutes. LOD for the mock samples was determined as the concentration where there was detection with at least 95% of the samples.

Cas13a guide design pipeline

A LbuCas13a guide targeting SARS-CoV-2 was designed by prioritizing sensitivity, specificity, and predicted secondary structure. 26 candidate spacers of 20 nucleotides were identified within the N Set 1 amplicon region of the SARS-CoV-2 reference genome (wuhCor1), targeting both the forward and reverse strands. Sensitivity was determined by pairwise aligning available SARS-CoV-2 genomes from GISAID with the reference genome and calculating the number of mismatches between the sample and reference genome for each candidate spacer. The percentage of SARS-CoV-2 genomes detected by each spacer, with no more than one mismatch, was then calculated, and spacers matching fewer than 99% of SARS-CoV-2 genomes were discarded. To ensure specificity, candidate spacers that were determined to be sensitive were aligned to other reference genomes of human coronaviruses, specifically, SARS, MERS, 229E, NL63, OC43 and HKU1. Spacers that matched any of these other coronaviruses with two or fewer mismatches were discarded. The remaining spacers were also aligned to the human transcriptome, again allowing for two mismatches, and spacers with any alignments were discarded to ensure the guide would not be complementary to off-target human transcripts. To ensure that the spacer sequences would allow for Cas13a binding to the direct repeat scaffold, the concatenated repeat and spacer sequence was folded using RNAfold and evaluated for correct hairpin structure in the direct repeat and single strandedness in the spacer sequence. Out of 5 possible SARS-CoV-2 spacers passing our sensitivity, specificity, and structure criteria, one was chosen for use as a guide RNA. A control guide targeting RNase P was selected with the same criteria to avoid matching SARS-CoV-2 and human transcripts and to ensure proper RNA structure.

T7 transcription

Transcription was performed on amplified rLAMP product using 2 μ L of 1mg/ml of T7 polymerase, 4 μ L of 100mM NTP mix (NEB N0450), 1 μ L of 200mM DTT, 4 μ L of 5X transcription buffer, 2 μ L of LAMP product and 7 μ L of water. This 20 μ L of reaction was heated at 37 °C for 30 minutes. 5X transcription buffer is composed of 150mM Tris-Cl, pH 8.1 at RT, 125mM MgCl₂, 0.05% Triton X-100 (Sigma Aldrich, X100), and 10mM spermidine and stored at -20°C.

Cas13 detection

Cas13 detection was performed as a 20 μ L reaction using 2 μ L of 1:100 diluted transcription product of LAMP, 1 μ L 5X Cas13 reaction buffer, 2 μ L of 2 μ M Cas13 reporter, 2 μ L of 10X RNP, 13 μ L of 1X Cas13 reaction buffer. 10X RNP was made as a 2:1 ratio of Cas13:crRNA with final concentration of Cas13 as 20nM and incubated at RT for 15 minutes before adding it to the reaction. This 20 μ L reaction was heated at 37 °C and read every 30s in TECAN Spark multimode microplate reader using FAM channel (Excitation:485; Emission:535).

One-pot T7 transcription and Cas13 detection

One pot T7 and Cas13 was performed by combining 2 μ L of 1mg/ml of T7 polymerase, 20mM NTP mix, 10mM DTT, and 25mM MgCl₂ with the Cas13 reaction mix. 2 μ L of 1:100 dilution of rLAMP product is used for 20 μ L of one pot T7- Cas13 reaction.