

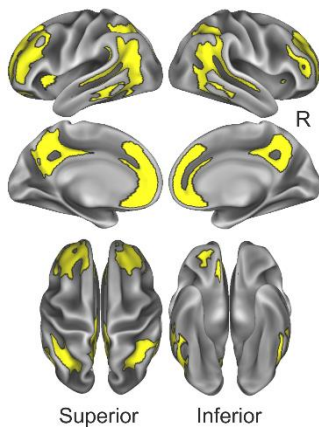
## Supplementary Materials

### *Supplementary statistical analyses*

In both the ALFA and ADNI cohorts, main effects of CSF  $A\beta_{42/40}$ , age, sex, and *APOE*- $\epsilon 4$  on  $A\beta$ -PET uptake were assessed by setting up a voxel-wise linear regression in SPM12 (<https://www.fil.ion.ucl.ac.uk/spm/>), with the normalized and smoothed SUVR individual parametric maps entered as dependent variables, while modeling the above mentioned factors as independent explanatory variables. Results were considered significant if surviving a voxel-level threshold of  $p < 0.001$  applying a cluster extent correction of 100 contiguous voxels ( $k > 100$ ).

### *Centiloid composite region of interest (ROI)*

Fig. S1 shows a surface rendering of the Centiloid composite ROI.

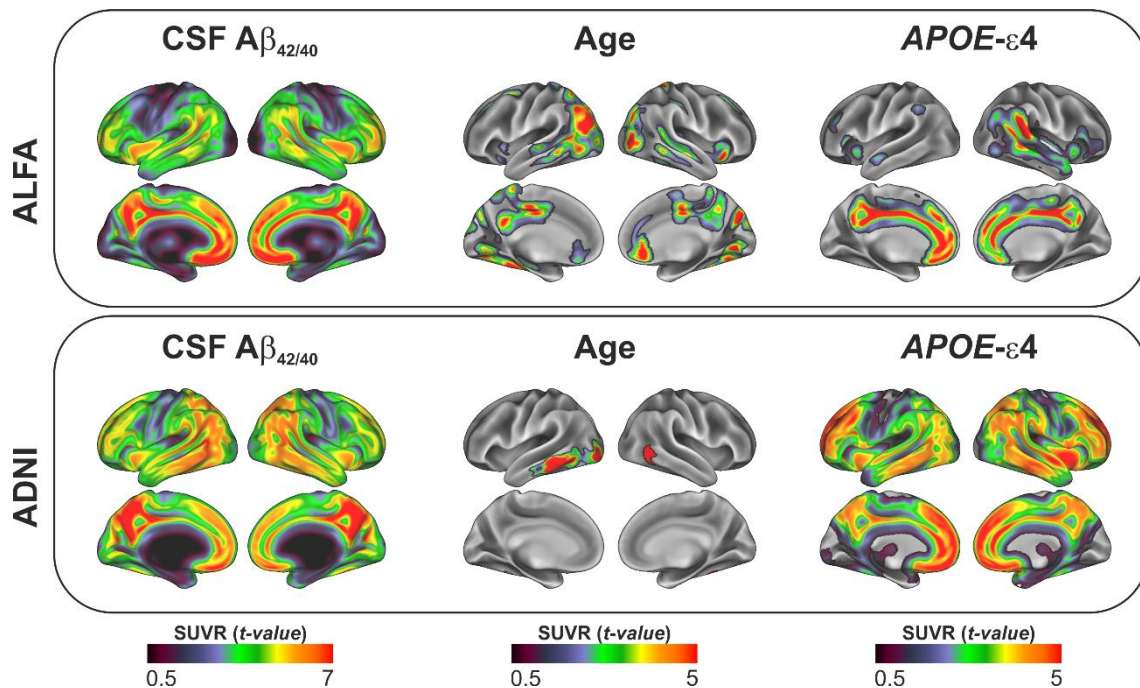


**Supplementary figure 1** – Centiloid composite ROI

## Supplementary results

### Main effect of CSF $A\beta_{42/40}$ , age and *APOE*- $\epsilon 4$ on cortical amyloid deposition

In both cohorts, Continuous CSF  $A\beta_{42/40}$  was strongly and negatively associated to  $A\beta$ -PET uptake in widespread regions across the cortical mantle known to be target of early  $A\beta$  deposition (Ch  telat et al., 2013). Age was significantly related to a higher cortical  $A\beta$  deposition, even though the effect was much more prominent and widespread in ALFA, compared to ADNI. The effects of sex were marginal, and mostly indicating a higher deposition in woman compared to men in midline cortical areas including anterior and middle cingulate cortex, in both cohorts. There was no significant effect of *APOE*- $\epsilon 4$  on to  $A\beta$ -PET retention, however, removing CSF  $A\beta_{42/40}$  from the model resulted in a significant main effect of the  $\epsilon 4$  allele, indicating a higher  $A\beta$  deposition in carrier vs. non-carriers, across the cingulate cortex as well as in superior temporal areas (Fig. S2).



**Supplementary figure 2** – Main effects of CSF  $A\beta_{42/40}$ , age and *APOE*- $\epsilon 4$  on  $A\beta$  PET tracer retention in both cohorts

**Supplementary Table 1** – List of Desikan-Killiany labels included in Braak stages and composite Centiloid ROIs

		<b>Desikan-Killiany labels</b>
<b>Centiloid</b>		
		Rostral middle frontal; Caudal middle frontal; Pars triangularis; Pars opercularis; Inferior parietal; Banks of superior temporal sulcus; middle temporal; Rostral anterior cingulate; Caudal anterior cingulate; Isthmus cingulate; Medial orbitofrontal; Putamen, Pallidum.
<b>Braak stage</b>		
	I-II	Entorhinal cortex; Hippocampus
	III-IV	Fusiform; Lingual; Amygdala; Inferior temporal; Middle temporal; Temporal pole; Thalamus; Isthmus cingulate; Insula
	V-VI	Superior frontal; Paracentral; Precuneus; Cuneus; Pericalcarine; Rostral middle frontal; Caudal middle frontal; Precentral; Postcentral, Superior parietal; Lateral occipital; Transverse temporal; Banks of superior temporal sulcus; Superior temporal; Caudate; Putamen

### Supplementary References

Chetelat G, La Joie R, Villain N, Perrotin A, de La Sayette V, Eustache F, *et al.* Amyloid imaging in cognitively normal individuals, at-risk populations and preclinical Alzheimer's disease. *NeuroImage Clinical* 2013; 2: 356-65.