

1 **Supplementary material**

2 **“Comparison of seven commercial SARS-CoV-2 rapid Point-of-Care Antigen**  
3 **tests”**

4

5 Victor M. Corman<sup>1,2</sup>, Verena Claudia Haage<sup>1</sup>, Tobias Bleicker<sup>1</sup>, Marie Luisa  
6 Schmidt<sup>1</sup>, Barbara Mühlemann<sup>1</sup>, Marta Zuchowski<sup>3</sup>, Wendy Karen Jó Lei<sup>1</sup>, Patricia  
7 Tscheak<sup>1</sup>, Elisabeth Möncke-Buchner<sup>1</sup>, Marcel A. Müller<sup>1,2</sup>, Andi Krumbholz<sup>4</sup>, Jan  
8 Felix Drexler<sup>1,2</sup>, Christian Drosten<sup>1,2</sup>.

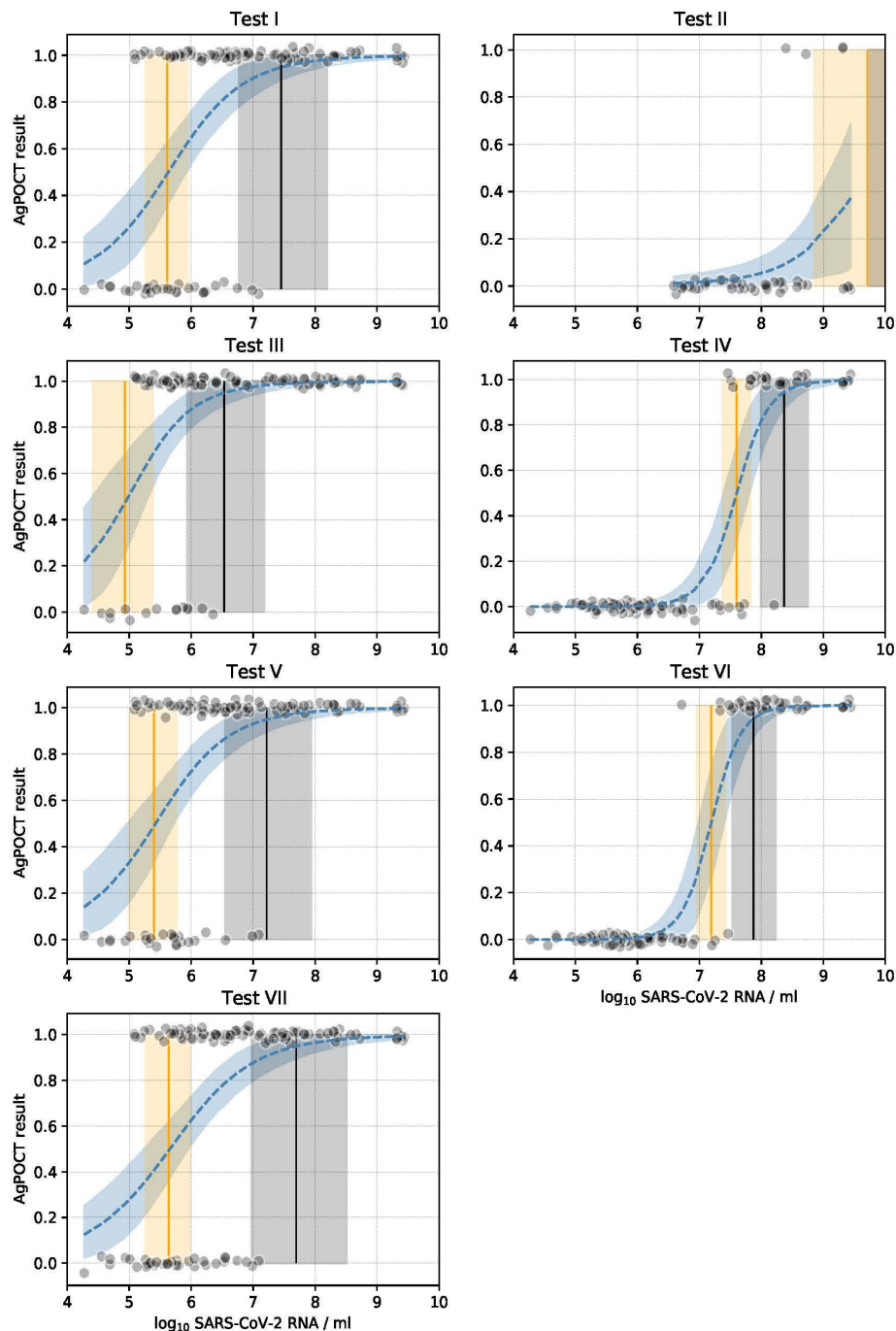
9 1: Institute of Virology, Charité-Universitätsmedizin Berlin, Corporate Member of  
10 Freie Universität Berlin, Humboldt-Universität zu Berlin, and Berlin Institute of Health,  
11 10117 Berlin, Germany.

12 2: German Centre for Infection Research (DZIF), 10117 Berlin, Germany.

13 3: Labor Berlin GmbH, Berlin, Germany

14 4: Institute for Infection Medicine, Christian-Albrecht University and University  
15 Medical Center Schleswig-Holstein, Kiel, Germany and Labor Dr. Krause und  
16 Kollegen MVZ GmbH, Kiel, Germany

17



18

19 **Supplementary Figure 1:** Predicted AgPOCT results as a function of log<sub>10</sub> SARS-CoV-2 RNA / mL using logistic  
 20 regression. Black dots show the log<sub>10</sub> SARS-CoV-2 RNA / mL (with jitter added on the y-axis) against positive  
 21 (1.0) and negative (0.0) AgPOCT result. The dark blue dashed line and shaded region represent the mean and  
 22 95% highest posterior density (HPD) interval of the logistic curve fitted to the data. The orange and black vertical  
 23 lines and shaded areas correspond to the mean and 95% HPD interval of the threshold log<sub>10</sub> SARS-CoV-2 RNA  
 24 / ml where 50% (orange) and 95% (black) of the AgPOCT test results have a value of 1.0, corresponding to a  
 25 positive result (also see Table 1). Model fit for Test II and Test III was poor, due to a large difference in the  
 26 number of positive and negative test results.