

Supplementary material

Supplementary Tables E1-E6

Supplementary Figures E1-E6

Supplementary Table E1. Definition of comorbidities using ICD-10 and ATC-codes. A comorbidity was considered to be present if: 1. At least one of the ICD-codes were registered during the period 2015-2020, excluding 30 days before admission in the Inpatient or Outpatient Register; and/or 2. At least one prescription for a drug with at least one of the ATC-codes below were expedited during the period 2019-2020, excluding 30 days before admission, according to the Prescribed Drug Register

	ICD-10	ATC
Ischaemic disease	I20 I21 I22 I23 I24 I25	N02BA C01DA B01AC24
Heart Failure	I110 I130 I132 I50	
Hypertension	I109 I11 I12 I13 I15	C02 (exkl C02AC02) C03 C09 C08CA C07AB02
Atrial fibrillation	I48	
Stroke	I60 I61 I62 I63 I64 I69	
Diabetes mellitus	E10 E11 E12 E13 E14	A10
Chronic lung disease	J41 J42 J43 J44 J45 J46 J47	R03AK R03AL R03BA R03AC12 R03AC13 R03AC18 R03AC19 R03CC12 R03BB04 R03BB05 R03BB06 R03BB07
Dementia	F00 F01 F02 F039 G30 F107A	N06D
Cancer	C00-C97 Z85	
Kidney disease	I12 I13 N00 N01 N02 N03 N04 N05 N07 N08 N11 N14 N18 N19 E102 E112	
Neuromuscular disorders	G10 G11 G12 G13 G14 G20 G21 G22 G23 G24 G25 G26 G30 G31 G32 G35 G36 G37 G70 G71 G72 G73 G80 G81 G82 G83	
Obesity	E66	A08

Supplementary Table E2. ICD-10 codes and weights defining comorbidity categories for calculating the Charlson Comorbidity Index. Modified from J. N. Armitage and J. H. van der Meulen: “Identifying comorbidity in surgical patients using administrative data with the Royal College of Surgeons Charlson Score”. British Journal of Surgery 2010; 97: 772–781. The index was calculated based on diagnoses reported to the National Patient Register 2015 - 2019

Category	Weight	ICD-10
Myocardial infarction	1	I252
Acute myocardial infarction	1	I21 I22 I23
Congestive heart failure	1	I11 I13 I255 I42 I43 I50 I517
Peripheral vascular disease	1	I70 I71 I72 I73 I770 I771 K558 K559 Z958 Z959 K551 R02
Cerebrovascular disease	1	G45 G46 I6
Dementia	1	F00 F01 F02 F03 G30 G31 A810 F051
Chronic pulmonary disease	1	I26 I27 J40 J41 J42 J43 J44 J45 J47 J60 J61 J62 J63 J64 J65 J66 J67 J684 J701 J703
Acute chronic pulmonary disease	1	J46
Rheumatic disease	1	M05 M06 M32 M33 M34 M35 M36 M09 M120 M315
Liver disease	1	K70 K71 B18 I85 I864 I982 K721 K729 K76 R162 Z944
Diabetes mellitus without complications	1	E100 E1032 106 E108 E109 E110 E111 E116 E118 E119 E120 E121 E126 E128 E129 E130 E131 E136 E138 E139 E140 D141 E146 E148 E149
Diabetes mellitus with complications	2	E102 E103 E104 E105 E107 E112 E113 E114 E115 E117 E122 E123 E124 E125 E127 E132 E133 E134 E135 E137 E142 E143 E144 E145 E147
Hemiplegia/Paraplegia	2	G81 G83 G114
Renal disease	2	I12 I13 N01 N03 N05 N07 N08 N18 N25 Z49 Z940 Z992
Acute renal disease	2	N171 N172 N19
Malignancy	2	C0 C1 C20 C21 C22 C23 C24 C25 C26 C30 C31 C32 C33 C34 C37 C38 C39 C40 C41 C45 C46 C47 C48 C49 C50 C51 C52 C53 C54 C55 C56 C57 C58 C6 C70 C71 C72 C73 C74 C75 C76 C80 C81 C82 C83 C84 C85 C90 C91 C92 C93 C94 C95 C96 C97 C43 C88
Metastatic tumours	6	C77 C78 C79
AIDS/HIV	6	B20 B21 B22 B23 B24

Supplementary Table E3. Duration of hospital stay in days, by discharge status and month of admission. Shown are number of patients and median hospital stay in days with interquartile range (IQR)

Discharge status		March		April		May		June	
		N	Median days (IQR)	N	Median days (IQR)	N	Median days (IQR)	N	Median days (IQR)
Non-ICU treated	Total	1905	5 (2 to 9)	5387	5 (3 to 9)	3740	5 (2 to 9)	2469	5 (2 to 9)
	Alive	1540	5 (2 to 9)	4586	5 (2 to 9)	3277	5 (2 to 9)	2221	4 (2 to 9)
	Deceased	365	6 (4 to 9)	801	6 (3 to 9)	4603	6 (4 to 10)	248	6 (4 to 10)
ICU treated	Total	457	21 (11 to 35)	993	23 (14 to 43)	484	23 (13 to 42)	291	20 (11 to 34)
	Alive	291	27 (17 to 47)	755	27 (15 to 49)	368	26 (16 to 48)	228	20 (12 to 39)
	Deceased	166	12 (7 to 20)	238	15 (9 to 25)	116	14 (7 to 24)	63	18 (7 to 31)

Supplementary Table E4. Relative risk of death within 60 days, with 95% confidence intervals, per month of admission by healthcare region. Strata-specific RR's were obtained by including an interaction term between healthcare region and month of admission. Model additionally adjusted for age, sex, Charlson Comorbidity Index categories, care dependency, and country of birth

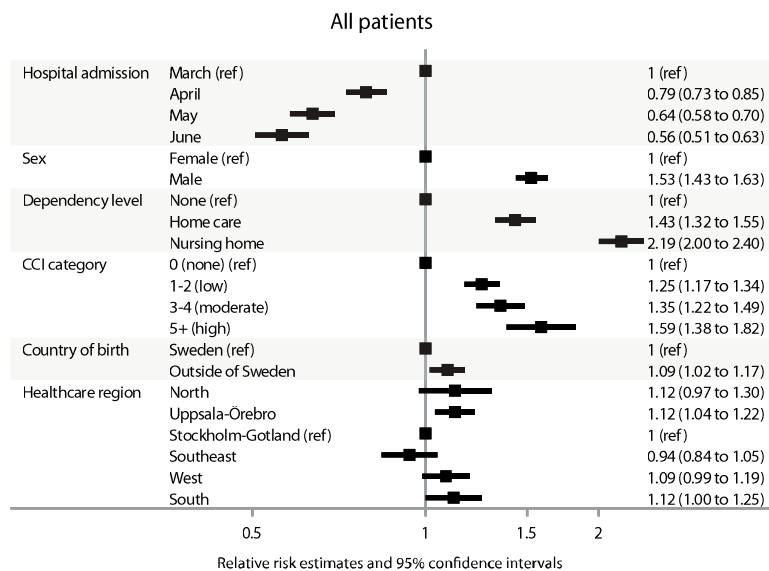
Healthcare region	Month of admission	N patients Non-survivors/admitted	Relative risk (95% CI)
North	March (ref)	15/100	1 (ref)
	April	48/260	1.39 (0.85 to 2.28)
	May	35/214	1.09 (0.65 to 1.80)
	June	36/188	1.27 (0.77 to 2.11)
Uppsala-Örebro	March (ref)	139/497	1
	April	255/1364	0.69 (0.59 to 0.81)
	May	132/847	0.54 (0.45 to 0.66)
	June	82/603	0.48 (0.39 to 0.60)
Stockholm-Gotland	March (ref)	319/1201	1 (ref)
	April	541/2917	0.76 (0.68 to 0.85)
	May	223/1595	0.56 (0.49 to 0.65)
	June	92/889	0.42 (0.35 to 0.51)
Southeast	March (ref)	47/272	1 (ref)
	April	106/603	1.21 (0.91 to 1.63)
	May	60/388	0.89 (0.64 to 1.23)
	June	39/277	0.94 (0.66 to 1.34)
West	March (ref)	45/204	1 (ref)
	April	152/910	0.80 (0.59 to 1.08)
	May	133/809	0.76 (0.56 to 1.03)
	June	89/581	0.73 (0.54 to 1.00)
South	March (ref)	19/91	1 (ref)
	April	63/335	0.83 (0.54 to 1.28)
	May	95/381	0.88 (0.58 to 1.32)
	June	32/235	0.67 (0.42 to 1.08)

Supplementary table E5. Relative risk (RR) of death within 60 days, with 95% confidence intervals, per month of admission by age group. Strata-specific RR's were obtained by including an interaction term between age group and month of admission. Model additionally adjusted for sex, Charlson Comorbidity Index categories, care dependency, healthcare region and country of birth

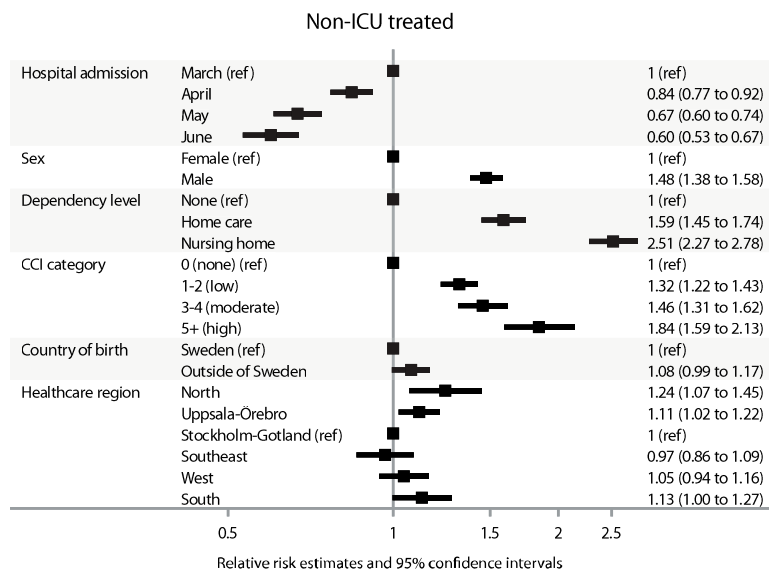
Age group	Month of admission	N patients Non-survivors/admitted	Relative risk (95% CI)
<60	March (ref)	45/889	1
	April	105/2698	0.88 (0.60 to 1.28)
	May	25/1770	0.31 (0.18 to 0.52)
	June	8/1193	0.16 (0.07 to 0.34)
60-69	March (ref)	85/443	1
	April	133/1207	0.63 (0.48 to 0.81)
	May	61/680	0.52 (0.38 to 0.71)
	June	29/466	0.37 (0.24 to 0.56)
70-79	March (ref)	174/518	1
	April	309/1118	0.80 (0.69 to 0.94)
	May	166/744	0.65 (0.55 to 0.78)
	June	83/468	0.52 (0.41 to 0.66)
80+	March (ref)	280/515	1
	April	618/1366	0.81 (0.74 to 0.90)
	May	426/1040	0.70 (0.63 to 0.90)
	June	250/646	0.68 (0.60 to 0.78)

Supplementary table E6. Population size and burden of covid-19-cases in hospital, nationally and per healthcare region in Sweden. Population as per 31st of December 2019, Statistics Sweden. Covid-19 patients are defined as all patients included in the present study

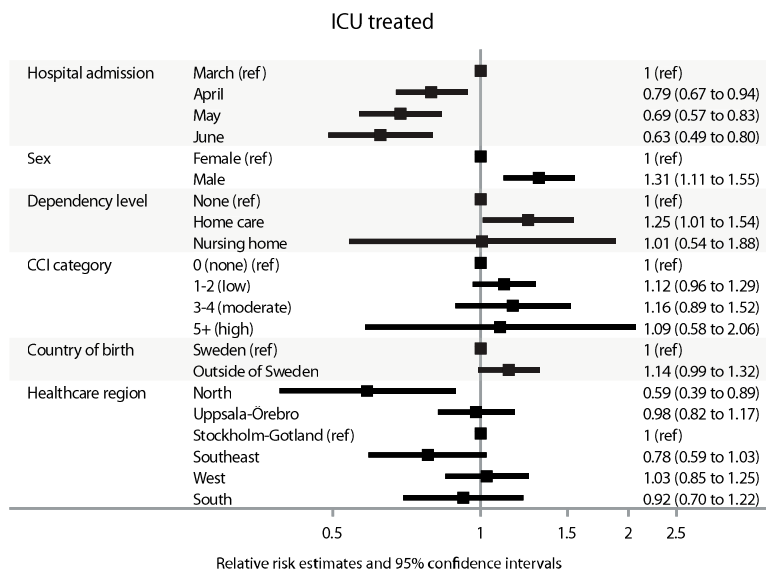
Healthcare region	Population size	Total study period	March	April	May	June
	Number of residents per 31 th of December 2019	Covid-19 patients per 100 000 residents	Covid-19 patients per 100 000 residents	Covid-19 patients per 100 000 residents	Covid-19 patients per 100 000 residents	Covid-19 patients per 100 000 residents
All of Sweden	10 327 589	152.6	22.9	61.9	41.0	26.9
North	897 986	84.9	11.1	29.0	23.8	20.9
Uppsala-Örebro	2 119 665	156.2	23.5	64.4	40.0	28.5
Stockholm-Gotland	2 436 767	270.9	49.3	119.7	66.6	36.5
Southeast	1 074 540	143.3	25.3	56.1	36.1	25.8
West	2 059 729	121.6	9.9	44.2	39.3	28.2
South	1 738 902	59.9	5.2	19.3	22.0	13.5



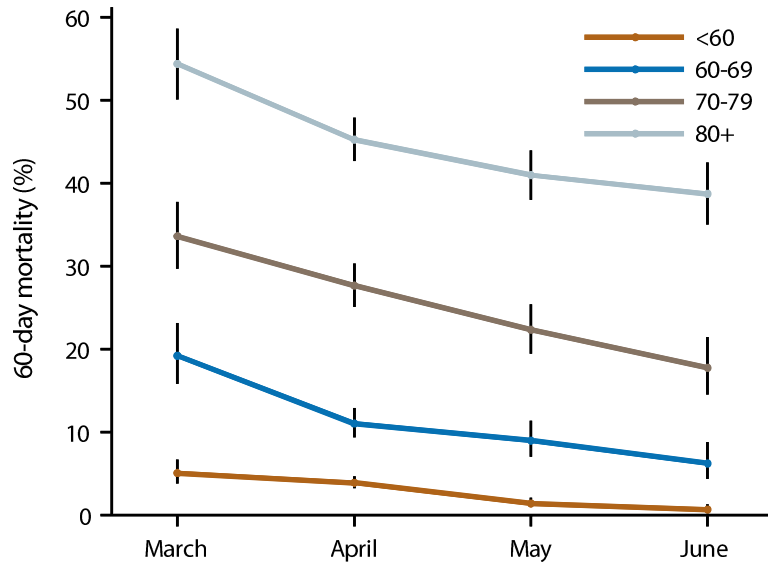
Supplementary Figure E1. Relative risk for all-cause death within 60 days from hospital admission for all patients in the cohort. Model 1, adjusted for sex, age (continuous, linear and quadratic terms, not shown in the plot), Charlson Comorbidity Index, care dependency, country of birth and healthcare region



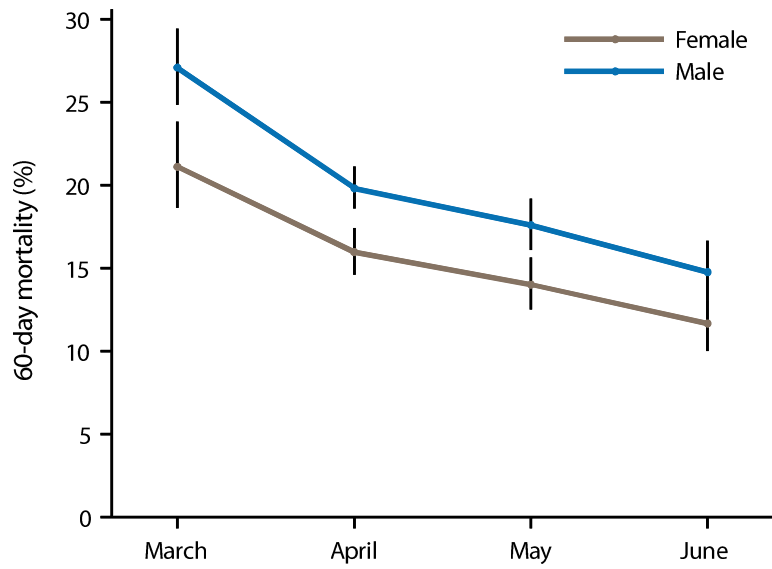
Supplementary Figure E2. Relative risk for all-cause death within 60 days from hospital admission for Non-ICU treated patients. Model 1, adjusted for sex, age (continuous, linear and quadratic terms, not shown in the plot), Charlson Comorbidity Index, care dependency, country of birth and healthcare region



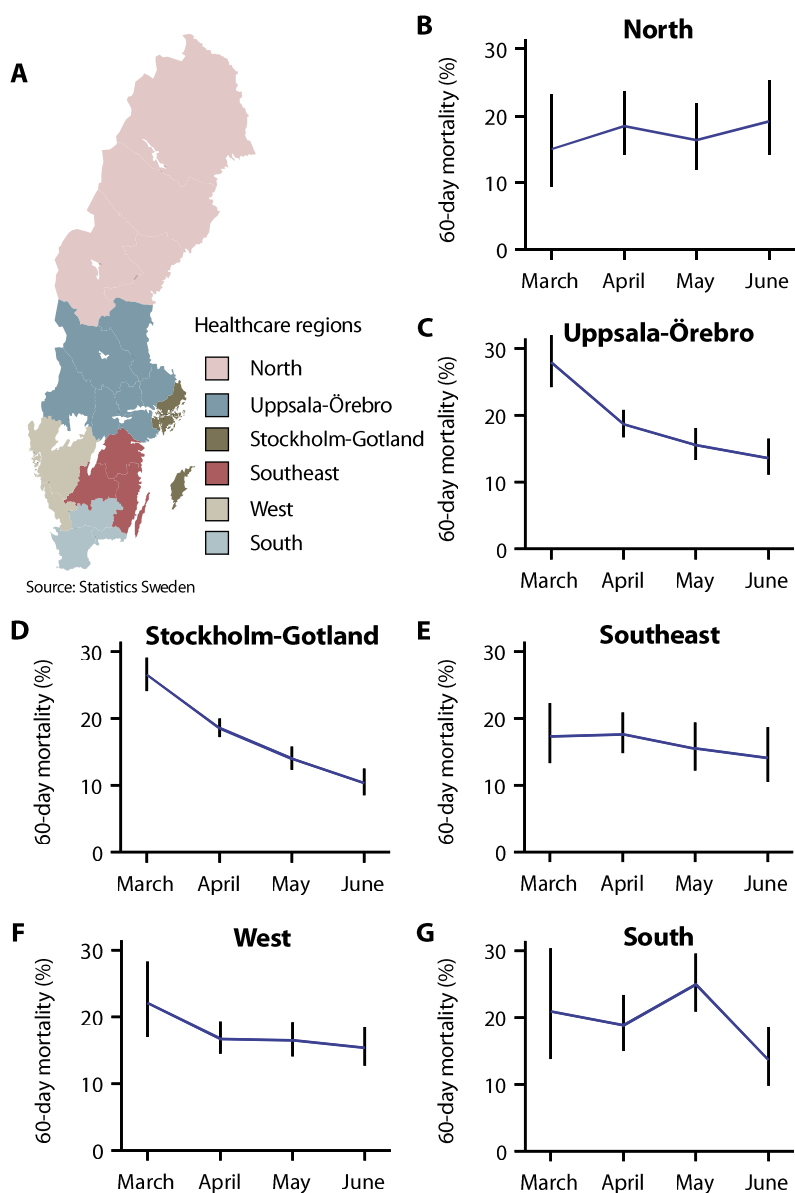
Supplementary Figure E3. Relative risk for all-cause death within 60 days from hospital admission for ICU-treated patients. Model 4, adjusted for sex, age (continuous, linear and quadratic terms, not shown in the plot), Charlson Comorbidity Index, care dependency, country of birth, healthcare region and SAPS3 (continuous, not shown in the plot)



Supplementary Figure E4. 60-day mortality by age categories. Shown are proportions with 95% confidence intervals per month of hospital admission, separately by age groups in years (<60, 60-69, 70-79, >79)



Supplementary Figure E5. 60-day mortality by sex. Shown are proportions with 95% confidence intervals per month of hospital admission, separately by men and women



Supplementary Figure E6. 60-day mortality by healthcare regions. A, Map outlining the six healthcare regions in Sweden. Due to pooled reporting under one hospital code from all hospitals in Halland County to the National Board of Health and Welfare, the county hospitals cannot be split correctly between West and South. Halland hospitals have therefore been assigned to Healthcare region West; B-G, Overall 60-day mortality with 95 % confidence intervals per month of hospital admission, separately by healthcare region