

## **Emergence of Clade III *Candida auris* of African Origin in Los Angeles**

Travis K. Price<sup>1</sup>, Ruel Mirasol<sup>1</sup>, Kevin W. Ward<sup>1</sup>, Ayrton J. Dayo<sup>1</sup>, Sukantha Chandrasekaran<sup>1</sup>, Omai B. Garner<sup>1</sup>, Annabelle de St Maurice<sup>2,3</sup> and Shangxin Yang<sup>1</sup>

<sup>1</sup>Department of Pathology and Laboratory Medicine, <sup>2</sup>Department of Clinical Epidemiology and Infection Prevention, and <sup>3</sup>Division of Pediatric Infectious Diseases, Department of Pediatrics, David Geffen School of Medicine at UCLA, Los Angeles, CA

**CORRESPONDING AUTHOR:** Shangxin Yang, PhD, D(ABMM); UCLA Clinical

Microbiology Laboratory, 11633 San Vicente Blvd, Los Angeles, CA 90049;

[shangxinyang@mednet.ucla.edu](mailto:shangxinyang@mednet.ucla.edu)

**RUNNING TITLE: Clade III *Candida auris* Outbreaks in Los Angeles**

**KEY WORDS: *Candida auris*, Clade III, Los Angeles, Outbreak, Genomic Characterization**

### **ABSTRACT:**

*Candida auris* is an emerging multi-drug resistant yeast responsible for invasive infections among hospitalized patients. We described a case series of *C. auris* isolated in the Los Angeles area from an ongoing outbreak. Genomic analysis showed a single Clade III lineage of African origin in all 6 cases since 2019.

## **MANUSCRIPT:**

### **Introduction**

*Candida auris* was first isolated in 2009 from the external ear canal of a 70-year-old patient in Tokyo, Japan<sup>1</sup>. In the decade that followed, cases of *C. auris* bloodstream and other invasive infections have been reported worldwide<sup>2 3 4 5 6 7</sup>. Many strains of *C. auris* are multidrug resistant and in some cases have elevated minimum inhibitory concentrations (MICs) to all three classes of antifungals including azoles, echinocandins and polyenes. The Centers for Disease Control and Prevention (CDC) recently listed *C. auris* as one of five “urgent threats” to public health in the 2019 Antibiotic Resistance (AR) Threats Report<sup>8</sup>, highlighting the need for active surveillance and appropriate infection prevention.

Whole genome sequencing (WGS) and phylogenetic analyses revealed the presence of at least four major clades of *C. auris* with worldwide geographic associations<sup>9 10</sup>. In the United States, outbreaks have been documented in New York, New Jersey, and Illinois; these were generally caused by strains of *C. auris* that were part of Clades I and IV<sup>11</sup>.

Here, we describe several cases of *C. auris* colonization and infection in patients of long-term acute care (LTAC) facilities in the Los Angeles area. WGS revealed that all isolates were part of Clade III, likely representing a unique outbreak in the United States. This is the first description of *C. auris* strains in Southern California.

### **Methods**

A laboratory-developed polymerase chain reaction (PCR) test implemented by the clinical microbiology laboratory in September 2019, was used for the detection of *C. auris* from inguinal-axillary swabs and yeast isolates from positive fungal culture of clinical specimens as a means to actively screen high-risk patients transferred to UCLA from LTAC facilities and skilled nursing facilities (SNFs). Nucleic acid extraction using the EZ1 Tissue Extraction kit (Qiagen, Germantown, MD) was performed followed by PCR using the DiaSorin Molecular LIAISON<sup>®</sup> MDX platform (DiaSorin Molecular, Cypress, CA). PCR-positive swab specimens were cultured; yeast isolates were identified using VITEK MS MALDI-TOF system (bioMérieux Inc, Hazelwood, MO).

Antifungal susceptibility testing by broth microdilution was performed on panels prepared in-house according to Clinical and Laboratory Standards Institute (CLSI) standards. The CDC tentative MIC breakpoints were used for interpretation of the following drugs: amphotericin B ( $\geq 2\mu\text{g/ml}$ ), fluconazole ( $\geq 32\mu\text{g/ml}$ ), anidulafungin ( $\geq 4\mu\text{g/ml}$ ), caspofungin ( $\geq 2\mu\text{g/ml}$ ), micafungin ( $\geq 4\mu\text{g/ml}$ ). Voriconazole, itraconazole, and posaconazole were also tested but no interpretative criteria for *C. auris* are available.

WGS was performed using Illumina MiSeq (Illumina, San Diego, CA). Analyses were performed using CLC Genomics Workbench (Qiagen, Valencia, CA, USA) and Geneious Prime (Biomatters, New Zealand). Reads were mapped to a reference *C. auris* complete genome (ATCC MYA-5002, NCBI: CP043531); this strain is part of Clade III. Sequences were compared by K-mer analysis and single nucleotide polymorphism (SNP) analysis using maximum-likelihood phylogenies.

This is a retrospective analysis and is part of an infection prevention and quality improvement project. The institutional review boards (IRB) approval was waived by the UCLA Office of the Human Research Protection Program.

## Results

In one year (09/2019 – 09/2020), we screened 113 patients using our in-house *C. auris* PCR assay; six patients have tested positive for *C. auris*. Cycle threshold (Ct) values ranged from 22.6 to 39.7 (**Table 1**). Of the six PCR-positive patients, herein referred to as patients A through F, five tested positive between July and September 2020 (patients B-F); while patient A tested positive in October 2019.

All six patients were residents of 4 different LTAC facilities within the Los Angeles county area; all had history of tracheostomy. Patients A and F had prior history of *C. auris* colonization. The microbiological findings of each patient are described in **Table 1**. *C. auris* isolates grew from inguinal-axillary swabs of 4/6 patients (A, C, D, E) and from other clinical specimens of patients A (tracheal aspirate) and F (pleural fluid). We did not isolate *C. auris* from patient B (Ct=39.5).

All *C. auris* isolates were resistant to amphotericin B (MIC=2µg/ml) and fluconazole (MIC>64µg/ml) but susceptible to echinocandins (**Table 2**).

K-mer analysis was performed using 252 publicly available sequences of *C. auris* described previously<sup>12</sup> (**Supplemental Data 1**) in addition to the sequences of the six isolates described here. All UCLA isolates belonged to Clade III (**Supplemental Data 1**). In this analysis, Clade III contained 56 isolates; these were primarily isolated from the African continent (n=44)<sup>11</sup> (**Supplemental Figure 1**).

Isolates from all four clades have been identified in the US and show a geographic relationship<sup>11</sup>; Clade I is predominant. A k-mer phylogenetic analysis of 57 *C. auris* isolated in the US was performed (**Figure 1**). Clade III (n=7), which included the six UCLA isolates, had one additional isolate which originated from Indiana and was isolated in March of 2017 (Genbank accession # SRR7909359). SNP analysis showed that the UCLA isolates were closely related to one another (3-78 SNPs) as well as to the Indiana isolate (66 – 138 SNPs) (**Supplemental Table 1**).

To further characterize the *C. auris* isolates, we analyzed the sequence of two genes associated with antifungal resistance: *erg11*, which encodes lanosterol 14-alpha demethylase, and *fks1*, a subunit of 1,3-β-D-glucan synthase. Sequences of *erg11* were identical for all UCLA isolates; all had a 99.6% pairwise nucleotide identity to the reference (CP043531) and two amino acid substitutions: V125A and F126L (**Supplemental Table 2**). Mutations at amino acid 126 are associated with increased azole resistance in *C. auris*<sup>9</sup> and are a common feature of Clade III isolates<sup>13</sup>. The specific F126L mutation appears to be exclusive to Clade III<sup>12</sup>. These findings are consistent with the antifungal susceptibility testing which showed that all isolates were resistant to fluconazole (**Table 2**). Sequences of *fks1* were identical in five of the UCLA isolates (A1, A2, C1, D1, E1) and showed 99.9% pairwise nucleotide identity to the reference (CP043531); these isolates had one amino acid substitution: I1572L (**Supplemental Table 2**). Isolate UCLA\_F1 had the same substitution in addition to I1095L. All isolates had a WT serine at amino acid 639; mutations at position 639 are linked to echinocandin resistance in *C. auris*<sup>14</sup>. All isolates were susceptible to caspofungin, micafungin and anidulafungin.

## Discussion

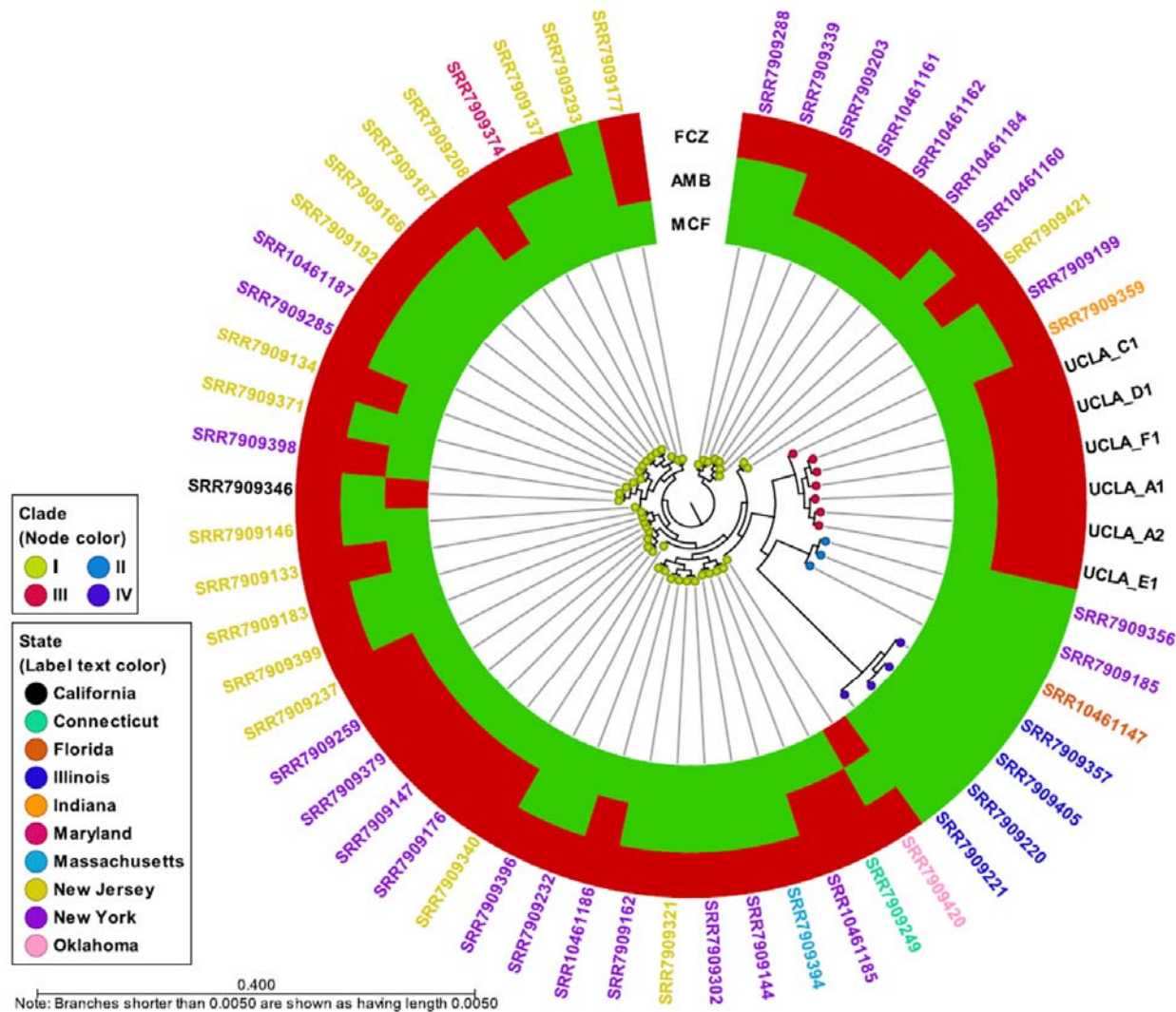
Here, our use of an in-house PCR test to actively screen patients for *C. auris* colonization has proven to be vital in identifying and preventing the spread of this pathogen in our hospital system. WGS of isolates obtained from several patients of LTAC facilities revealed two important findings. First, these isolates are closely related to one another; this confirms the existence of an ongoing outbreak with community spread in the Los Angeles area. Second, these isolates are part of Clade III of African origin; this suggests a unique introduction of *C. auris* into the United States because this clade has not been implicated in outbreaks in other states.

The isolates described here were all resistant to fluconazole and Amphotericin B but susceptible to echinocandins. Additionally, all isolates had an F126L mutation in the *erg11* gene, which is associated with fluconazole resistance and unique to Clade III strains of *C. auris*.

Limitations of this study include the lack of any additional epidemiological history of the patients related to exposures including travel. Being able to link patients to a country with known *C. auris* outbreaks of Clade III strains would be essential to understanding how the current Los Angeles outbreak began.

In conclusion, we have identified a unique Clade III *C. auris* strain in an ongoing outbreak in the LTAC facilities since 2019, indicating active community spread of multi-drug resistant *C. auris* in the Los Angeles area.

## FIGURES & TABLES



**Figure 1. K-mer Analysis of 57 *C. auris* Isolates from the United States.** K-mer analysis was performed using CLC Genomics Workbench (Qiagen, Valencia, CA, USA) using genome sequences from 52 publicly available *C. auris* strains on NCBI GenBank as well as sequences from UCLA\_A1, UCLA\_A2, UCLA\_C1, UCLA\_D1, UCLA\_E1, and UCLA\_F1. A list of sequences used is found in Supplemental Data 1. Each node represents a unique isolate; the node color refers to the clade. The color of the isolate name (*i.e.*, label text color) refers to the state of origin. The metadata shows the susceptibility of each isolate to fluconazole (FCZ), amphotericin B (AMB), and micafungin (MCF); red indicates resistant, green indicates susceptible.

**Table 1. Patient test results, clinical history, and *C. auris* isolate information.**

Patient	Month of Positive PCR	PCR Ct Value	<i>C. auris</i> Isolate (Specimen Type)
A	10/2019	22.6	UCLA_A1 (Inguinal-Axillary) UCLA_A2 (Tracheal)
B	7/2020	39.5	Not isolated <sup>a</sup>
C	8/2020	22.6	UCLA_C1 (Inguinal-Axillary)
D	8/2020	39.7	UCLA_D1 (Inguinal-Axillary)
E	8/2020	28.3	UCLA_E1 (Inguinal-Axillary)
F	9/2020	30.6	UCLA_F1 (Pleural Fluid, Rt)

<sup>a</sup> *C. auris* was not isolated from the inguinal-axillary surveillance swab of patient B

**Table 2. Antifungal susceptibility results for *C. auris* isolates.**

Antifungal	MIC (µg/ml) (interpretation) for <i>C. auris</i> isolate:					
	UCLA_A1	UCLA_A2	UCLA_C1	UCLA_D1	UCLA_E1	UCLA_F1
Amphotericin B	2 (R)	2 (R)	2 (R)	2 (R)	2 (R)	2 (R)
Fluconazole	>64 (R)	>64 (R)	>64 (R)	>64 (R)	>64 (R)	>64 (R)
Voriconazole	2	1	1	0.5	0.5	2
Itraconazole	1	1	0.5	0.25	0.25	1
Posaconazole	0.06	0.12	≤0.03	≤0.03	0.06	0.06
Anidulafungin	0.5 (S)	0.12 (S)	0.25 (S)	0.12 (S)	0.06 (S)	1 (S)
Caspofungin	0.5 (S)	0.12 (S)	0.5 (S)	0.5 (S)	0.12 (S)	0.5 (S)
Micafungin	0.25 (S)	0.25 (S)	0.25 (S)	0.12 (S)	0.25 (S)	0.25 (S)

MIC testing was performed on panels prepared in-house in accordance with CLSI guidelines. Interpretive breakpoints were defined by the CDC Antifungal Susceptibility Testing and Interpretation guidelines for *C. auris*, which were adapted from interpretive criteria for closely related *Candida spp.* Tentative breakpoints for the following antifungals were used: amphotericin B (≥2µg/ml), fluconazole (≥32µg/ml), anidulafungin (≥4µg/ml), caspofungin (≥2µg/ml), micafungin (≥4µg/ml). S=susceptible, I=intermediate, R=resistant.



## SUPPLEMENTAL FIGURES & TABLES

**Supplemental Table 1. SNP analysis of *C. auris* isolates.**

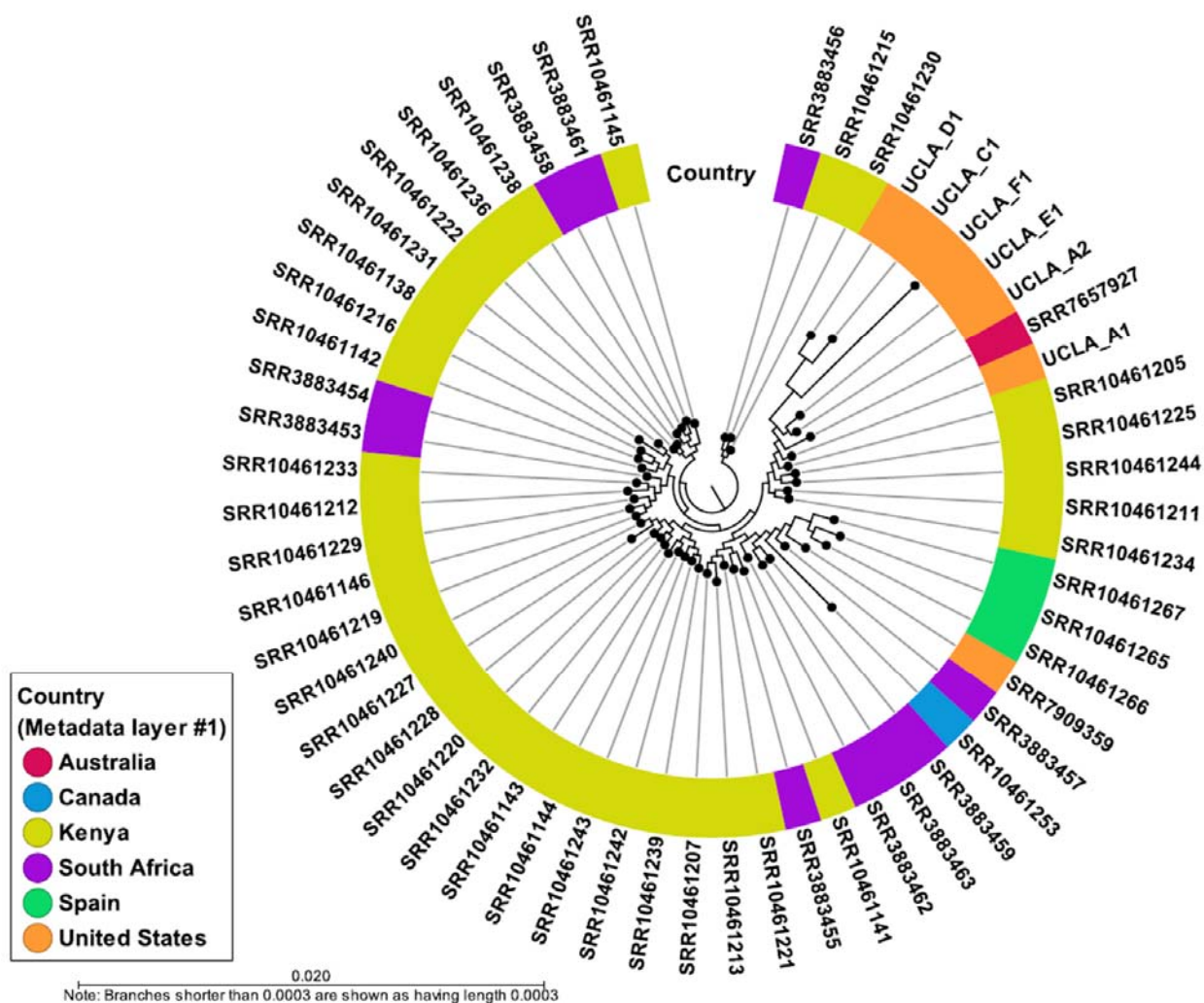
	UCLA_A1	UCLA_A2	UCLA_C1	UCLA_D1	UCLA_E1	UCLA_F1	US Clade III (SRR7909359)	US Clade I (SRR7909162)	US Clade II (SRR7909356)	US Clade IV (SRR7909221)
<b>UCLA_A1</b>	---	3	12	10	7	76	66	24373	35804	95894
<b>UCLA_A2</b>	3	---	11	9	6	77	65	24372	35803	95893
<b>UCLA_C1</b>	12	11	---	4	7	76	74	24381	35808	95896
<b>UCLA_D1</b>	10	9	4	---	5	78	72	24379	35810	95897
<b>UCLA_E1</b>	7	6	7	5	---	75	69	24376	35807	95897
<b>UCLA_F1</b>	76	77	76	78	75	---	138	24402	35796	95919
<b>US Clade III (SRR7909359)</b>	66	65	74	72	69	138	---	24384	35814	95909
<b>US Clade I (SRR7909162)</b>	24373	24372	24381	24379	24376	24402	24384	---	36609	97646
<b>US Clade II (SRR7909356)</b>	35804	35803	35808	35810	35807	35796	35814	36609	---	95704
<b>US Clade IV (SRR7909221)</b>	95894	95893	95896	95897	95897	95919	95909	95704	97646	---

Reads were mapped to the *C. auris* reference genome (CP043531), consensus sequences were extracted from the alignments and SNP analysis was performed.

**Supplemental Table 2. Nucleotide and amino acid variants of *C. auris* isolates**

<i>C. auris</i> Isolate	Erg11		Fks1	
	Nucleotide Pairwise Identity	Protein Sequence Variants	Nucleotide Pairwise Identity	Protein Sequence Variants
<b>UCLA_A1</b>	99.6%	p.V125A p.F126L	99.9%	p.I1572L
<b>UCLA_A2</b>	99.6%	p.V125A p.F126L	99.9%	p.I1572L
<b>UCLA_C1</b>	99.6%	p.V125A p.F126L	99.9%	p.I1572L
<b>UCLA_D1</b>	99.6%	p.V125A p.F126L	99.9%	p.I1572L
<b>UCLA_E1</b>	99.6%	p.V125A p.F126L	99.9%	p.I1572L
<b>UCLA_F1</b>	99.6%	p.V125A p.F126L	99.8%	p.I1095L p.I1572L

Nucleotide pairwise identity to *C. auris* strain ATCC MYA-5002 (CP043531), and protein translation and variant analysis was performed using Geneious Prime (Biomatters, New Zealand).



**Supplemental Figure 1. K-mer Analysis of 56 *C. auris* Isolates in Clade III.** K-mer analysis was performed using CLC Genomics Workbench (Qiagen, Valencia, CA, USA) using genome sequences from 50 publicly available *C. auris* strains on NCBI GenBank as well as sequences from UCLA\_A1, UCLA\_A2, UCLA\_C1, UCLA\_D1, UCLA\_E1, and UCLA\_F1. A list of sequences used is found in Supplemental Data 1. The metadata (*i.e.*, metadata layer #1) shows the country of origin.

## REFERENCES

1. Satoh K, Makimura K, Hasumi Y, Nishiyama Y, Uchida K, Yamaguchi H. *Candida auris* sp. nov., a novel ascomycetous yeast isolated from the external ear canal of an inpatient in a Japanese hospital. *Microbiol Immunol.* 2009;53(1):41-44. doi: 10.1111/j.1348-0421.2008.00083.x [doi].
2. Calvo B, Melo AS, Perozo-Mena A, et al. First report of *Candida auris* in America: Clinical and microbiological aspects of 18 episodes of candidemia. *J Infect.* 2016;73(4):369-374. doi: 10.1016/j.jinf.2016.07.008 [doi].
3. Belkin A, Gazit Z, Keller N, et al. *Candida auris* infection leading to nosocomial transmission, Israel, 2017. *Emerg Infect Dis.* 2018;24(4):801-804. doi: 10.3201/eid2404.171715 [doi].
4. Ruiz-Gaitan A, Moret AM, Tasiás-Pitarch M, et al. An outbreak due to *Candida auris* with prolonged colonisation and candidaemia in a tertiary care European hospital. *Mycoses.* 2018;61(7):498-505. doi: 10.1111/myc.12781 [doi].
5. Armstrong PA, Rivera SM, Escandon P, et al. Hospital-associated multicenter outbreak of emerging fungus *Candida auris*, Colombia, 2016. *Emerg Infect Dis.* 2019;25(7):10.3201/eid2507.180491. doi: 10.3201/eid2507.180491 [doi].
6. Rhodes J, Abdolrasouli A, Farrer RA, et al. Genomic epidemiology of the UK outbreak of the emerging human fungal pathogen *Candida auris*. *Emerg Microbes Infect.* 2018;7(1):43-x. doi: 10.1038/s41426-018-0045-x [doi].

7. Tsay S, Welsh RM, Adams EH, et al. Notes from the field: Ongoing transmission of candida auris in health care facilities - united states, june 2016-may 2017. *MMWR Morb Mortal Wkly Rep.* 2017;66(19):514-515. doi: 10.15585/mmwr.mm6619a7 [doi].
8. CDC. Antibiotic resistance threats in the united states, 2019. . 2019.
9. Lockhart SR, Etienne KA, Vallabhaneni S, et al. Simultaneous emergence of multidrug-resistant candida auris on 3 continents confirmed by whole-genome sequencing and epidemiological analyses. *Clin Infect Dis.* 2017;64(2):134-140. doi: 10.1093/cid/ciw691 [doi].
10. Chow NA, de Groot T, Badali H, Abastabar M, Chiller TM, Meis JF. Potential fifth clade of candida auris, iran, 2018. *Emerg Infect Dis.* 2019;25(9):1780-1781. doi: 10.3201/eid2509.190686 [doi].
11. Chow NA, Gade L, Tsay SV, et al. Multiple introductions and subsequent transmission of multidrug-resistant candida auris in the USA: A molecular epidemiological survey. *Lancet Infect Dis.* 2018;18(12):1377-1384. doi: S1473-3099(18)30597-8 [pii].
12. Chow NA, Munoz JF, Gade L, et al. Tracing the evolutionary history and global expansion of candida auris using population genomic analyses. *mBio.* 2020;11(2):10.1128/mBio.03364-19. doi: e03364-19 [pii].
13. Healey KR, Kordalewska M, Jimenez Ortigosa C, et al. Limited ERG11 mutations identified in isolates of candida auris directly contribute to reduced azole susceptibility.

*Antimicrob Agents Chemother.* 2018;62(10):10.1128/AAC.01427-18. Print 2018 Oct.

doi: e01427-18 [pii].

14. Chowdhary A, Prakash A, Sharma C, et al. A multicentre study of antifungal susceptibility patterns among 350 candida auris isolates (2009-17) in india: Role of the ERG11 and FKS1 genes in azole and echinocandin resistance. *J Antimicrob Chemother.* 2018;73(4):891-899. doi: 10.1093/jac/dkx480 [doi].