

SUPPORTING INFORMATION : APPENDIX 1

This appendix has been provided by the authors to give readers additional information about their work.

Supplement to: Anna, Goyard, et al.

High seroprevalence but short-lived immune response to SARS-CoV-2 infection in Paris

François Anna^{1*}, Sophie Goyard^{2,3*}, Ana Ines Lalanne^{4,5*}, Fabien Nevo^{1,6}, Marion Gransagne⁷, Philippe Souque⁶, Delphine Louis^{4,5}, Véronique Gillon⁸, Isabelle Turbiez⁸, François-Clement Bidard^{5,9,10}, Aline Gobillon¹¹, Alexia Savignoni¹¹, Maude Guillot-Delost^{5,12}, François Dejardin¹³, Evelyne Dufour¹³, Stéphane Petres¹³, Odile Richard-Le Goff¹⁴, Zaineb Choucha⁷, Olivier Helynck¹⁵, Yves L. Janin¹⁵, Nicolas Escriou⁷, Pierre Charneau^{1,6}, Thierry Rose^{2,3**}, Olivier Lantz^{4,5,12**}

Author affiliations

1. Theravectys, Paris, France
2. Unit of Lymphocyte Cell Biology, Immunology Department, Institut Pasteur, Paris, 75015, France
3. INSERM 1221, Institut Pasteur, Paris, 75015, France
4. Laboratoire d'Immunologie Clinique, Institut Curie, Paris, 75005, France.
5. Centre d'Investigation Clinique en Biothérapie, Institut Curie (CIC-BT1428), Paris, 75005, France
6. Unit of Molecular Virology and Vaccinology, Virology Department, Institut Pasteur, Paris, 75015, France
7. Innovation Laboratory: Vaccines, Institut Pasteur, Paris, 75015, France
8. Direction of the Clinical Research, Institut Curie, Paris, 75005, France.
9. Medical Oncology Department, Institut Curie, Paris, 75005, France
10. UVSQ, Paris-Saclay University, Saint-Cloud, 92210, France
11. Biometry, Institut Curie, Paris, 75005, France
12. INSERM U932, PSL University, Institut Curie, Paris, 75005, France
13. Production and purification of recombinant proteins technological platform, Paris, 75015, France
14. Unit of Antibody in Therapy and Pathology, Institut Pasteur, Paris, 75015, France
15. Unit of Chemistry and Biocatalysis, Institut Pasteur, UMR 3523 CNRS, Paris, 75015, France

Table of Contents

Supplementary Methods

Ethical considerations

Participant enrolment

Questionnaire

Luciferase-Linked Immuno Sorbent Assays (LuLISA)

Plasmid design and production of Nucleoprotein and Spike from SARS-CoV-2

Plasmid design and production of Nucleoprotein from SARS-CoV-1 and HCoV

Design and synthesis of plasmid encoding the anti-IgG nanobody-luciferase tandem

Expression, purification and validation of anti-IgG nanobody-Luciferase tandem

IgG LuLISA assay protocol

S-Pseudo-typed Neutralization Assay (PNT)

Pseudo-virus production and permissive cell line generation

Pseudo-neutralization assay protocol

Statistical analysis

Supplementary Figures

Figure S1. Description of anti-IgG VHH Fc1-KAZ and of SARS-CoV2 viral protein targets Nucleoprotein and Spike

Figure S2. Luciferase-linked immuno-sorbent assay

Figure S3. Pseudo-neutralization assay (PNT)

Figure S4. Specificity of assayed IgG against Nucleoproteins of SARS-CoV2 vs SARS-CoV1 and seasonal virus HCoV

Figure S5. Sequence comparison of SARS-CoV2, SARS-CoV1 and seasonal virus Nucleoproteins

Figure S6. Serological profile comparison between asymptomatic and symptomatic workers

Figure S7: PNT raw data for cohort analysis

References

SUPPLEMENTARY METHODS

Ethical considerations

This study was registered and received ethical approval by the Comité de Protection des Personnes Méditerranée III (2020.04.18 bis_ 20.04.16.49458, 27/4/2020) registered in the clinical trial database (NCT04369066). All participants were informed of the study outcomes. All blood samples have been drawn and anonymized at the Institut Curie and their analysis have been performed at the Institut Pasteur, Paris.

Participant enrolment

The study called volunteer participants working at one of the three Institut Curie locations (Paris, Orsay or Saint Cloud) for four longitudinal blood tests at t_0 then after 1, 3 and 6 months. Following informed consent, 18 years of age or older participant outside of any SARS-CoV-2 acute infectious episode in the last 7 days, completed a web-based questionnaire (Ennov Clinical). Participants covered hospital and non-hospital related activities, age and sex. A 5 mL blood sample was taken from all participants in dry tubes. After clotting, blood was centrifuged 10 min at 2000 g and frozen. Supernatant serum was separated and frozen.

Questionnaire

The questionnaire provided in Supplementary Appendix 2 recorded individual information and details related to SARS-CoV-2 infection, including date of testing, date of symptom onset and a description of symptoms if there were some. Recorded symptoms were fever, fatigue, cough, difficulty breathing, shortness of breath, loss of taste (ageusia) or smell (anosmia), headache, muscle aches, conjunctivitis or colds, digestive disorders (vomiting, diarrhea).

Luciferase-Linked Immuno Sorbent Assays (LuLISA)

Plasmid design and production of Nucleoprotein and Spike from SARS-CoV-2

Production of the Nucleoprotein (N): A codon-optimized gene was synthesized (GeneArt, Thermo Fisher Scientific, Waltham, MA) and subcloned in the pETM11 expression vector¹ allowing the expression of the full-length N protein (UniProtKB ID: PODTC9) with an amino-end (His)₆ tag in the *E. coli* BL21 (DE3) pDIA17 strain. Bacteria were grown in Nzytech auto-inducible-medium (Lisboa, Portugal) for 4 hours at 37°C then 15 hours at 18°C. Cultures are then centrifuged and the pellets were lysed using a cell disrupter (Constant system Ltd, Daventry Northants, UK) in a phosphate saline lysis buffer (phosphate 50 mM, NaCl 300 mM, pH=8) supplemented with 20 mM imidazole, one complete EDTA-free protease tablet (Merck, Darmstadt, Germany) and 1250 units of benzonase (Merck, Darmstadt, Germany). 2.5mg of RNase was added (Thermo Fisher Scientific, Waltham, MA) and the lysate was further incubated at room temperature for about 20 min. The lysate was centrifuged at 19000 rpm and the soluble fraction was recovered for affinity purification on Protino Ni-NTA 5 ml column (Macherey Nagel, Dueren, Deutschland). The protein was eluted by a 20 - 250 mM imidazole gradient in lysis buffer. The fractions containing the protein of interest were pooled and injected in a Superdex 200 16/600 size-exclusion chromatography column (Cytiva, Velizy, France) equilibrated in a phosphate 50 mM, NaCl 500 mM pH=8 buffer. The protein was eluted as an homodimer and analyzed in denaturing condition on a stain-free SDS PAGE (4–15% Mini-PROTEAN® TGX Stain-Free™ Protein Gels, Bio-Rad) as shown in Supplementary Appendix 1 Figure S1 and native condition using multi-angle diffusion light scattering (not shown, Wyatt, CA, USA) for quality validation (Molecular Biophysics Facility, Institut Pasteur). Samples were aliquoted (0.35 mg/mL) and stored at 4°C until use.

Production of the Spike protein (S): A codon-optimized nucleotide fragment encoding the ectodomain (amino acid 1 to 1211) of the S protein (UniProtKB ID: P0DTC2) was synthesized (GeneArt, Thermo Fisher), fused to nucleotide fragments encoding the trimerization foldon domain of the bacteriophage T4 fibrin and a Twin-Strep-tag (IBA Life Science, Goettingen, Germany) and subcloned into the pCI vector (Promega, Madison, WI USA). The ectodomain was further stabilized in its uncleaved prefusion state through inactivation of its furin cleavage site (R682G, R683S and R685G) and insertion of the 2 proline mutations (K986P and V987P) described by Kirchdoerfer et al. for SARS-CoV-1 spike protein ², respectively. The T4 fibrin foldon (g¹yipeaprdgqA¹²YVRKDGWVLL²³stfl) ³ is used here as an artificial trimerization domain (β -hairpin propeller) for mimicking the Spike trimeric assembly at the virion surface. Expi 293F cells (Life Technologies, Courtaboeuf France) were grown in freestyle 293 expression medium and transfected with the expression vector (300 μ g DNA/ 30 mL of freestyle 293 medium) and 300 μ l of PEI pro (Polyplus transfection, Illkirch, France). Cells were grown 5 days at 37°C and 8% CO₂, orbitally agitated at 110 rpm. The cultures were centrifuged and the supernatant was equilibrated at pH=8.0 with TRIS 1M then concentrated using a 100 kDa MWCO tangential flow filtration cartridge on an Äkta Flux (Cytiva, Velizy France) with a phosphate filtration buffer (phosphate 50 mM, NaCl 300 mM pH=8.0). The retentate was recovered for Twin-Strep-tag-affinity purification on StrepTrap column (Cytiva, Velizy France). The protein was eluted using 2.5 mM desthiobiotine in filtration buffer. The protein was recovered as an homotrimer and analyzed in denaturing condition on a stain-free SDS PAGE (4–15% Mini-PROTEAN® TGX Stain-Free™ Protein Gels, Bio-Rad) as shown in Supplementary Appendix 1 Figure S1 and native condition using analytical size exclusion chromatography and multi-angle diffusion light scattering for quality validation (not shown, Molecular Biophysics Platform, Institut Pasteur). Samples were aliquoted (0.52 mg/mL) and stored at 4°C until use.

Production of Nucleoproteins from SARS-CoV-1 and HCoV: The optimized synthetic gene (GeneArt, Thermo Fisher) of SARS-CoV1, HCoV-HKU, HCoV-OC43, HCoV-NL63, HCoV-229E (UniProtKB ID: P59595, Q5MQC6, P33469, Q6Q1R8, P15130 respectively) with carboxy-end His₆-tag and flanking region corresponding to the pET23 sequence (Novagen). pET23 plasmids were amplified with the forward and reverse oligonucleotides using a Q5 DNA polymerase, dNTP mix (New England BioLabs). The PCR products were purified by electrophoresis on agarose gel (1%, Macherey Nagel). The purified pET23 vector and the synthetic genes were assembled using NEBuilder HiFi assembly master mix (New England BioLabs). These plasmid were used to transform *E.coli* BL21 (DE3). Cells were grown at 18°C and induced with IPTG (Sigma-Aldrich). After harvesting the cells by centrifugation (1.5 L), the pellet was resuspended in 50 mM Tris-HCl pH 8.0, 50 mM NaCl with protease inhibitor (Sigma-Aldrich) and lysozyme (0.1 mg/mL, QBIO-gene). Cells were disrupted by freezing-thawing cycle lysis method. DNase (Sigma-Aldrich) was then added to remove DNA from the sample. SARS-CoV-1 and HCoV Nucleoproteins were purified as described for Fc1-nanoKAZ below. The protein quality was analyzed in denaturing condition on a stain-free SDS PAGE (4–15% Mini-PROTEAN® TGX Stain-Free™ Protein Gels, Bio-Rad) as shown in Supplementary Appendix 1 Figure S4 and in native condition by acquisition of UV-spectra (240-300 nm). Concentrations were estimated from the solution absorption at 280 nm and sequence by the method of Gill and von Hippel ⁴).

Design and synthesis of plasmid encoding the anti-IgG nanobody-luciferase tandem

NanoKAZ (19 kDa) is an optimized sequence of the catalytic domain of the luciferase from the subtropical sea shrimp *Oplophorus gracilirostris* ^{5,6}. The gene *kaz* has been optimized and synthesized by Eurofins (Germany) with carboxy-end His₆-tag and flanking region corresponding to the pET23 sequence (Novagen). pET23 plasmids were amplified with the forward and reverse oligonucleotides using a Q5 DNA polymerase, dNTP mix (New England BioLabs). The PCR products were purified by

electrophoresis on agarose gel (1%, Macherey Nagel). The purified pET23 vector and the synthetic gene were assembled (pET23-*kaz*) using NEBuilder HiFi assembly master mix (New England BioLabs).

The Fc IgG-binding moiety ($K_d=2.14$ nM) is from an antibody of the camelid species alpaca (*Vicugna pacos*) selected against the Fc domain of human IgG (single-domain antibody, ⁷). The gene *fc1* has been synthesized by Eurofins with a flanking region corresponding to the pET23-*kaz* sequence. Synthetic gene *fc1* was amplified with the corresponding forward and reverse oligonucleotides using a Q5 DNA polymerase and dNTP mix. PCR products were purified by electrophoresis on agarose gel. Purified pET23-*kaz* vector and the synthetic gene *fc1* were assembled using the NEBuilder HiFi assembly master mix. The assembled products (5 μ L) were used to transform NEB 5-alpha competent *E. coli* and grown overnight on LB/Agar/ampicillin in a Petri dish. Isolated colonies were grown in liquid medium, plasmids were isolated. The full sequence of the anti-IgG nanobody luciferase tandem ([Fc1]-[nanoKAZ]-[His₆]) was analyzed to confirm the presence of the *fc1-kaz* insert shown in Supplementary Appendix 1 Figure S1.

Expression, purification and validation of anti-IgG nanobody-Luciferase tandem

The pET23-*fc1-nanokaz* was used to transform *E. coli* BL21 (DE3) to achieve high expression in *E. coli*. Cells were grown at 18°C and IPTG (Sigma-Aldrich) was added to induce *fc1-nanoKAZ* production. After harvesting the cells by centrifugation (1.5 L), the pellet was resuspended in 50 mM Tris-HCl pH 8.0, 50 mM NaCl with protease inhibitor (Sigma-Aldrich) and lysozyme (0.1 mg/mL). Cells were disrupted by freezing-thawing cycle lysis method. DNase (Sigma-Aldrich) was then added to remove DNA from the sample.

The crude extract was centrifuged 30 min at 15,000 g. The supernatant was collected and NaCl (500 mM), Imidazole (20 mM, Sigma-Aldrich) and Triton (0.1%, Sigma-Aldrich) were added. The cleared lysate was loaded on a Hi-Trap 5 mL-column (Cytiva, Velizy France) at 4 mL/min using an Äkta pure chromatography system (Cytiva, Velizy France). The column was washed with 20 volumes of column with a running buffer (50 mM Tris-HCl pH 8.0, NaCl 50 mM, 20 mM imidazole) at 5 mL/min. The VHH Fc1-nanoKAZ was eluted with a gradient of imidazole from 20 mM to 200 mM in 50 mM Tris-HCl pH 8.0, 50 mM NaCl at 5 mL/min and fractions of 1 mL were collected in a 96-deepwell plate (Cytiva, Velizy France). Catalytic activity of fractions was profiled using a luminometer Hydex by diluting 10⁷ fold the fractions in PBS with 27 μ M of the imidazo[1,2-*a*]pyrazin-3(7*H*)-one derivative Q-108 resulting from the hydrolysis of hikarazin-108 ⁸. The fractions of high activity were pooled, and loaded on a 1 mL HiTrap Q column (Cytiva, Velizy France) equilibrated in 50 mM Tris-HCl pH 8.0, NaCl 50 mM. The protein was eluted in 50 mM MES pH 6.5, 50 mM NaCl at 1 mL/min at 18°C using the Äkta pure chromatography system. The fractions of 500 μ L were collected in 96-deepwell plates and their activities were assayed as described above. The fractions with high activity were pooled. The quality of the purified protein was assessed by loading an aliquot (10 μ L) on a stain-free SDS gel (4–15% Mini-PROTEAN® TGX Stain-Free™ Protein Gels, Bio-Rad). The gel was activated by UV trans-illumination for 5 min (Bio-Gel Doc XR Imaging System, Bio-Rad). Tryptophan residues undergo an UV-induced reaction with trihalo compounds and produce an imaged fluorescence signal (Supplementary Appendix 1 Figure S1). An UV-spectrum (240-300 nm) was acquired for evaluating the concentration of Fc1-nanoKAZ (MW 34,726 Da) from the solution absorption at 280 nm ($\epsilon = 50,780$ M⁻¹cm⁻¹ estimated by the method of Gill and von Hippel ⁴). The specific activity is about $4 \cdot 10^{17} \pm 0.5 \cdot 10^{17}$ RLU·s⁻¹·g⁻¹ of Fc1-nanoKAZ.

IgG LuLISA protocol

The LuLISA (Luciferase-Linked Immuno-Sorbent Assay) is an ELISA-based method (Enzyme-Linked Immuno-Sorbent Assay) for which the enzyme coupled to the antibody fragment is a luciferase ⁹ and

is distinguished by the nature of the measurement, the relative number of photons collected per second, which quantifies an instantaneous rate of catalytic reaction, whereas ELISAs measure an accumulation of a product or the disappearance of a substrate, whether absorbent or fluorescent, and whose reaction can be stopped at any time. If the relative number of photons in the first minutes is proportional to the number of luciferases in solution, the measurement must be carefully calibrated with robust references under the same conditions in the same multi-well plates. Indeed, luciferases catalyze the decarboxylation of a luciferin, here Q108 (made by the deacetylation of from hikarazine-108)¹⁰, into an amide in the presence of molecular oxygen with a reaction speed dependant on temperature, amount of dissolved oxygen and substrate concentration. The luciferase used is a nanoKAZ⁶ which exhibits inhibition by excess substrate in excess of 54 μM and stochastic inactivation by one of the transient reaction products. The enzyme at the optimum substrate concentration has a half-life of 60 minutes with Q108^{8,10}. The antibody fragment is derived from an alpaca heavy single chain (VHH) with an affinity of 0.58, 1.73, 47.8, 0.30 nM (KD) for the Fc domains of human IgG1, IgG2, IgG3 and IgG4 respectively with an average for overall IgG of 2.14 nM⁷. The anti-IgG VHH-nanoKAZ construction is described in Supplementary Appendix 1 Figure S1A.

As shown in the Supplementary Appendix 1 Figure S2, correlation for four replicates of 96 LuLISA IgG/N on a single 384-well plate with fresh sera is greater than 0.97 (R^2), roughly pipetting errors aggravated by viscosity and protein aggregation variations. R^2 is 0.96 on four different plates, 0.88 to 0.92 between frozen and fresh sera loaded on the same plate and 0.82 to 0.88 when loaded on different plates one month apart while it is 0.88 to 0.96 when loaded with frozen sera at the same time on different plates, 0.92 to 0.96 on the same plates. Both the LuLISA and ELISA are sensitive to the storage quality of the sera, in particular to the thawing conditions which contribute to the denaturation of proteins, in particular albumin, and which cause the formation of aggregates that can pull down immunoglobulins and alter the concentration of soluble specific Ig.

White 384-well plates with flat bottoms (Fluoronunc C384 Maxisorp, Nunc) were coated with either 1 $\mu\text{g}/\text{mL}$ of Nucleoprotein or Spike protein in PBS buffer, 50 $\mu\text{L}/\text{well}$ for 3 hours at room temperature or overnight at 4°C. Wells were washed using a plate washer (Zoom, Berthold Technologies, Germany) two cycles of three times with 100 μL of PBS/Tween 20 0.1%. Sera were diluted 200 times in PBS, non-fat milk 3% and Tween 20 0.1%. 50 μL of serum dilutions were incubated 1 hour at room temperature in their respective wells. Wells were washed two cycles of three times with 100 μL of PBS/Tween 20 0.1%. Purified Fc1-nanoKAZ 1 ng/mL ($400 \cdot 10^6 \text{ RLU} \cdot \text{s}^{-1} \cdot \text{mL}^{-1}$) in PBS, non-fat milk 3% and Tween 20 0.1% was loaded (50 $\mu\text{L}/\text{well}$) and incubated 30 min at room temperature. Wells were washed two cycles of three times with 100 μL of PBS/Tween 20 0.1%. Plates can be stored at this step in PBS until measurements. Just before reading, each of the wells were emptied and loaded with 50 μL of Q-108 at 13 μM . The plate was orbitally shaken for 3 seconds and the collected photons were counted during 1 sec per well and measured 3 times in a plate luminometer (Mithras2, Berthold, Wildbad, Germany).

S-Pseudo-typed neutralization assay

Pseudo-virus production and permissive cell line generation

Pseudo-typed vectors were produced and titrated as previously described¹¹. Adaptation of the protocol are : cells were co-transfected with calcium-phosphate precipitation protocol with 10 μg of packaging plasmid encoding for gag-pol-tat-rev proteins (p8.74), 10 μg of vector plasmid (pTrip-CMV) expressing luciferase Firefly reporter and 5 μg of envelop plasmid expressing a codon-optimized full-length S SARS-Cov-2 (UniProtKB ID: P0DTC2) sequence amplified by PCR from pMK-RQ_S-2019-nCoV with adaptative primers and introduced by BamHI/XhoI restriction/ligation in a pCMV plasmid. Pseudo-typed vectors were harvested at day 2 post-transfection. Functional titer (TU) was determined by SYBRgreen qPCR after transduction of a stable HEK 293T-hACE2 cell line using two couples of primers to either quantify vector genome (forward CMV: ACT GCC AAA ACC GCA TCA CC reverse CMV: AAT

GAC GGT AAA TGG CCC GC) or cell genome (forward GADPH: TCT CCT CTG ACT TCA ACA GC reverse GADPH: CCC TGC ACT TTT TAA GAG CC). To generate the permissive cell line, HEK 293T cells were transduced at MOI 20 with an integrative lentiviral vector expressing cDNA human ACE2 (UniProtKB ID: Q9BYF1) codon-optimized gene (Eurofins) under the control of UBC promoter. Clones were generated by limiting dilution and selected for their permissivity to SARS-CoV-2 S pseudo-typed lentiviral vector transduction with a Luciferase Assay System (Promega).

Pseudo-neutralization assay protocol

First, sera were decompartmentalized at 56°C during 30 min in a water bath. To determine EC50 serum dilutions (from 1/40 to 1/40960 by successive 4-fold dilutions) are mixed and co-incubated with 300 TU of pseudo-typed vector at room temperature during 30 minutes under agitation. Both, serum and vector are diluted in culture medium DMEM-glutamax (Gibco) + 10% FCS (Gibco) + Pen/Strep (Gibco). Mix is then plated in tissue culture treated black 96-well plate clear bottom (Costar) with 20 000 HEK 293T-hACE2 cells in suspension. To prepare the cell suspension, the cell flask is washed with DPBS twice (Gibco) and cells are individualized with DPBS + 0.1% EDTA (Sigma-Aldrich) to preserve hACE2 protein. After 48h incubation at 37°C 5% CO₂, the medium is completely removed by aspiration and bioluminescence is measured using a Luciferase Assay System (Promega) on an EnSpire plate reader (PerkinElmer).

Statistical analyses

Seropositivity was defined as the presence of detectable anti-SARS-CoV-2 antibodies against N or S. The proportion of seropositive samples was compared by time between onset of symptoms and collection of blood sample using chi-square test.

LuLISA, and pseudo-neutralization of sera were compared by delay since onset of symptoms using the Kruskal-Wallis non-parametric test. The chi-square test was used to evaluate the association between investigated factors and neutralization levels.

All analyses were performed using GraphPad Prism 8 (GraphPad Software, LLC).

References

1. Dummer A, Lawrence AM, de Marco A. Simplified screening for the detection of soluble fusion constructs expressed in E. coli using a modular set of vectors. *Microb Cell Fact* 2005;4:34.
2. Kirchdoerfer RN, Wang N, Pallesen J, et al. Stabilized coronavirus spikes are resistant to conformational changes induced by receptor recognition or proteolysis. *Sci Rep* 2018;8:15701.
3. Meier S, Guthe S, Kiefhaber T, Grzesiek S. Foldon, the natural trimerization domain of T4 fibrin, dissociates into a monomeric A-state form containing a stable beta-hairpin: atomic details of trimer dissociation and local beta-hairpin stability from residual dipolar couplings. *J Mol Biol* 2004;344:1051-69.
4. Gill SC, von Hippel PH. Calculation of protein extinction coefficients from amino acid sequence data. *Anal Biochem* 1989;182:319-26.
5. Hall MP, Unch J, Binkowski BF, et al. Engineered luciferase reporter from a deep sea shrimp utilizing a novel imidazopyrazinone substrate. *ACS Chem Biol* 2012;7:1848-57.
6. Inouye S, Sato J, Sahara-Miura Y, Yoshida S, Hosoya T. Luminescence enhancement of the catalytic 19 kDa protein (KAZ) of *Oplophorus* luciferase by three amino acid substitutions. *Biochem Biophys Res Commun* 2014;445:157-62.
7. Hermans WJJ, Bezemer S, Mijnsbergen YM, inventors; Single-domain antigen-binding proteins that bind mammalian IgG patent WO 2009/011572 Al. 2009 8 July 2008 (08.07.2008).

8. Coutant EP, Goyard S, Hervin V, et al. Gram-scale synthesis of luciferins derived from coelenterazine and original insights into their bioluminescence properties. *Org Biomol Chem* 2019;17:3709-13.
9. Goyard S, Balbino B, Chinthrajah RS, et al. A highly sensitive bioluminescent method for measuring allergen-specific IgE in microliter samples. *Allergy* 2020.
10. Coutant EP, Gagnot G, Hervin V, et al. Bioluminescence Profiling of NanoKAZ/NanoLuc Luciferase Using a Chemical Library of Coelenterazine Analogues. *Chemistry* 2020;26:948-58.
11. Iglesias MC, Mollier K, Beignon AS, et al. Lentiviral vectors encoding HIV-1 polyepitopes induce broad CTL responses in vivo. *Mol Ther* 2007;15:1203-10.

Anna et al. Supplementary Information- Appendix 1 - Figure S1

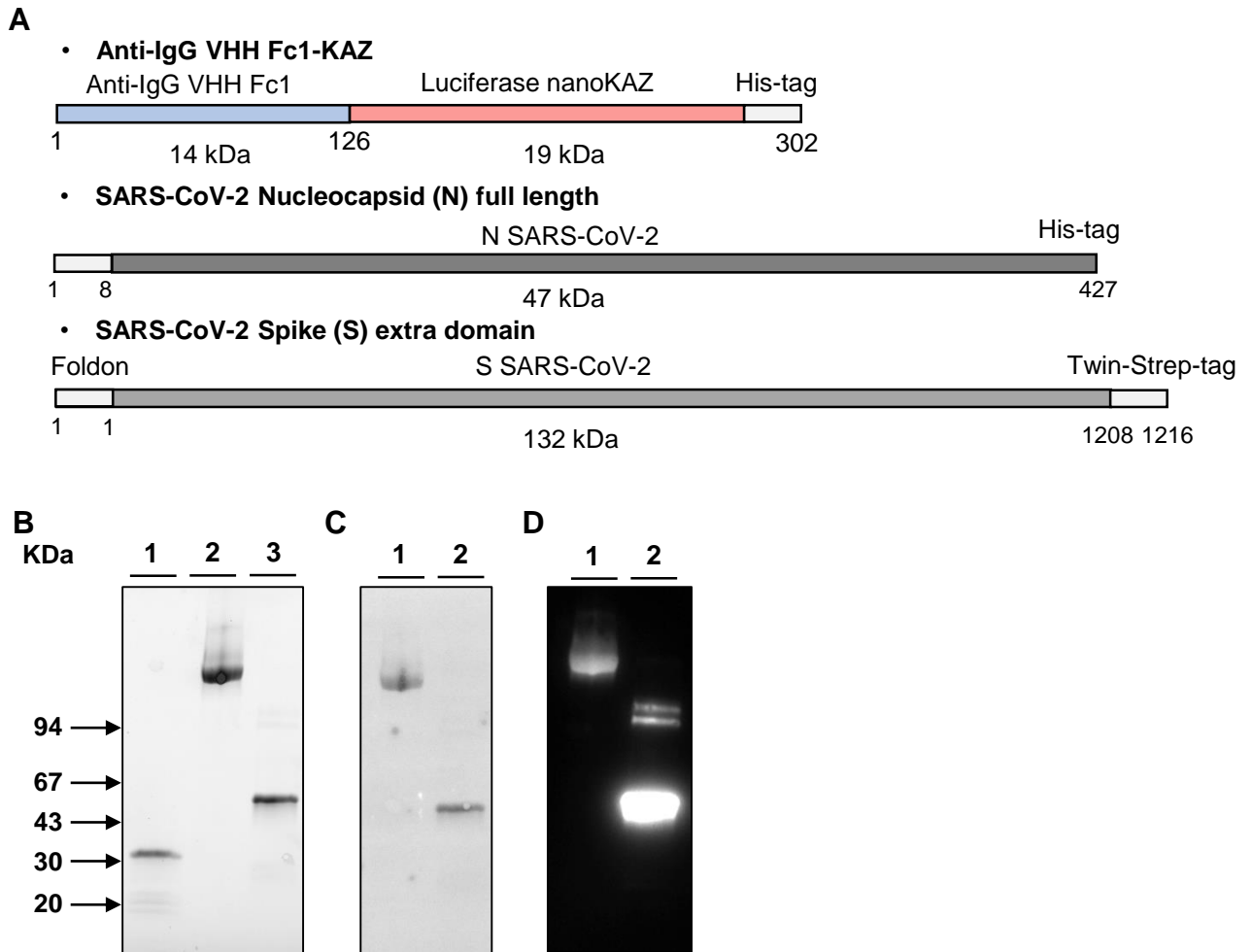


Figure S1 Description of anti-IgG VHH Fc1-KAZ and of SARS-CoV2 viral protein targets nucleoprotein and spike.

(A) Scheme of protein topology used in the study. Quality control of proteins used as targets on SDS-polyacrylamide gel electrophoresis. Proteins were run on a 4-15% gradient gel and visualized by UV-induced fluorescence of tryptophan-bound trihalo compounds (B) or by western blot analysis after transfer onto the PDVF proteins using stain-free system (Bio-Rad) (C) or luminescence (D) Lane 1: Purified VHH-anti IgG Fc1-nanoKaz (2 microg); Lane 2, purified protein SARS-CoV Spike (6 microg); Lane 3 Nucleoprotein (3 microg). Molecular weights are indicated by arrows.

Anna et al. Supplementary Information- Appendix 1 - Figure S2

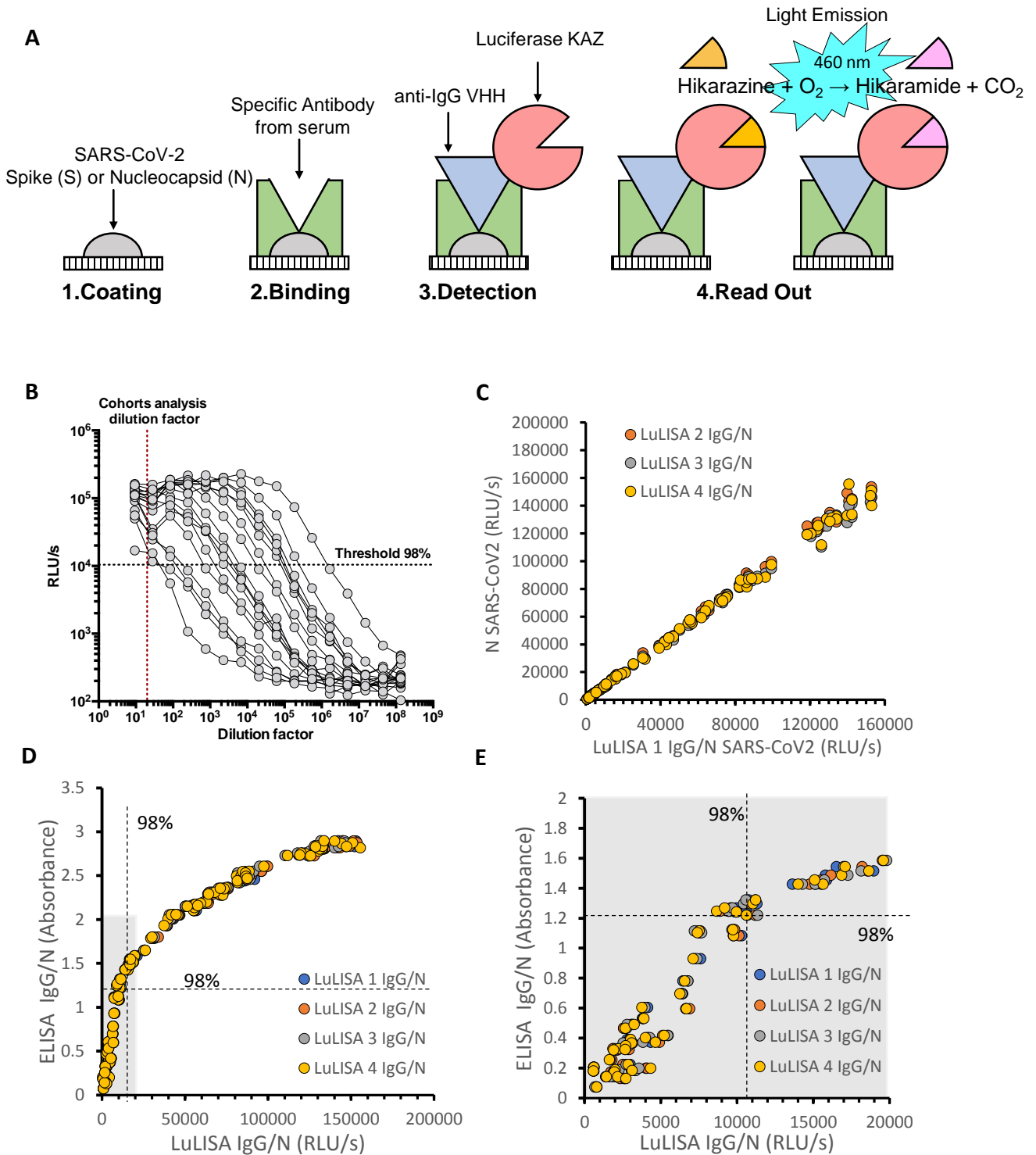
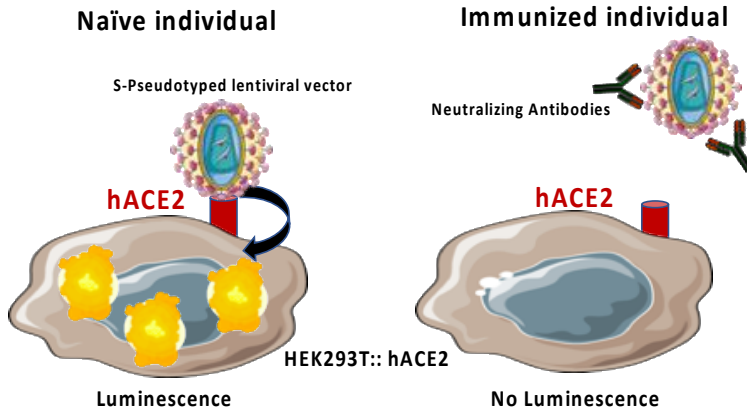


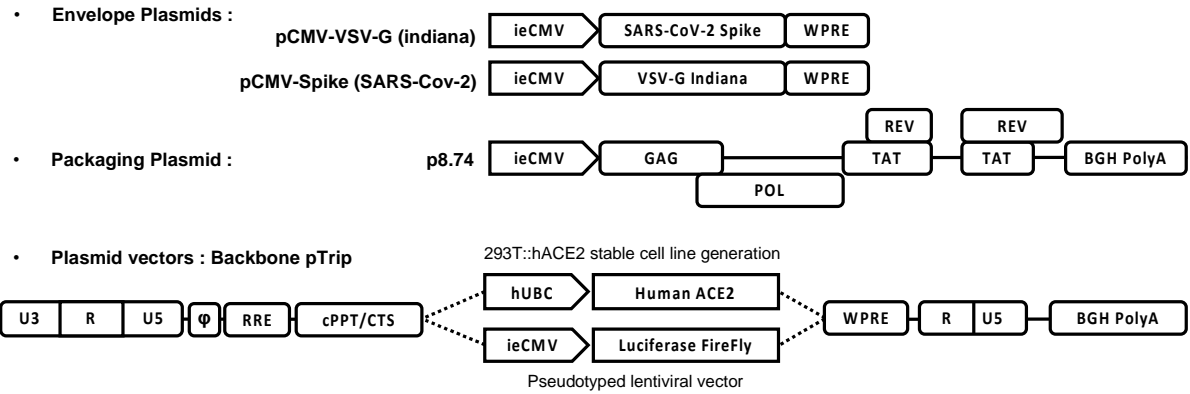
Figure S2 Luciferase-linked immuno-sorbent assay

(A) Scheme of the LuLISA assay. (B) LuLISA of titration of N-specific IgG from patients' sera (Hospital Cochín). Serial dilutions of sera from 10⁻¹ to 10⁻⁸ in PBS. (C) Four repeats of IgG/N LuLISA on the same series of 96 diluted sera in PBS (1/200). (D) Comparison of the 4 IgG/N LuLISA vs IgG/N ELISA (HRP-anti-human IgG) showing the large dynamic scale of LuLISA vs ELISA. (E) The gray zone in D is zoomed showing the higher sensibility of LuLISA (low dispersion of LuLISA values, high dispersion of ELISA values below DO 1.2 for dilution 1/200) and the loss of linearity beyond absorbance 1.2. Threshold 98%, DO 1.2, 10400 RLU/s are indicated with dashed lines.

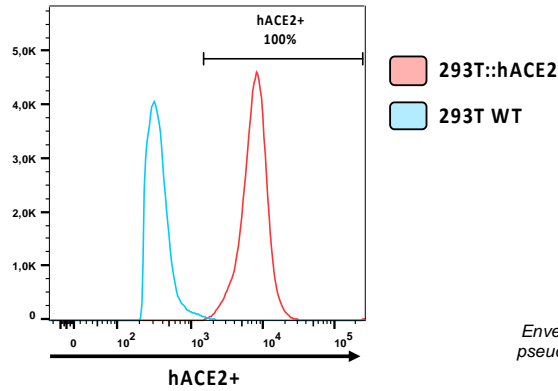
A



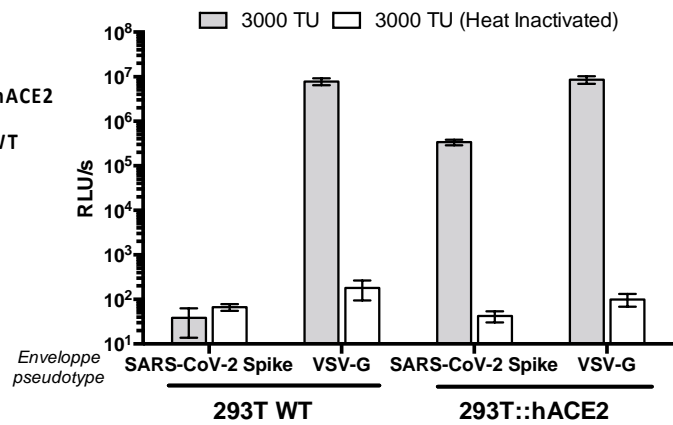
B



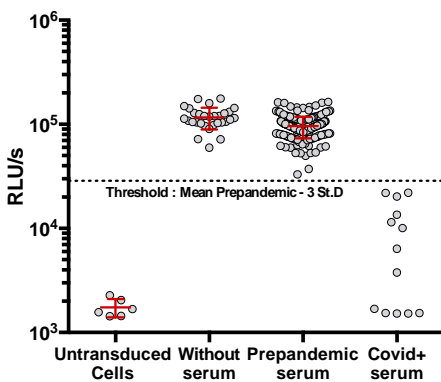
C



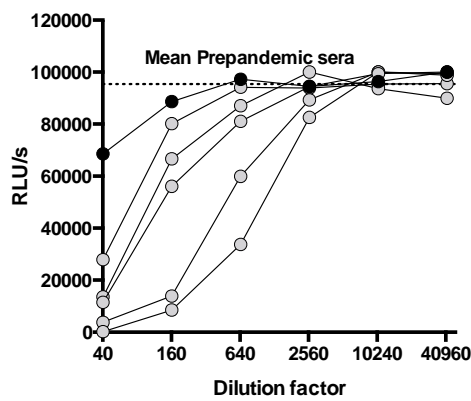
D



E



F



G

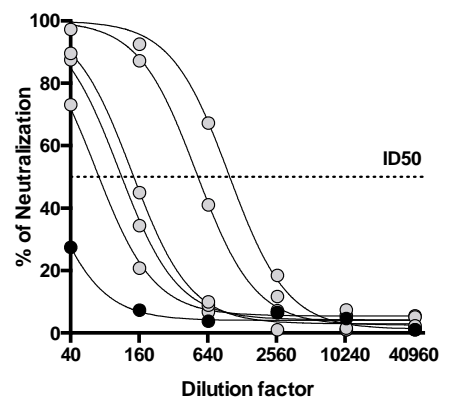


Figure S3: Pseudo-neutralisation assay (PNT)

(A) Schematic representation of Pseudo-neutralization assay.

(B) Production plasmids used to generate lentiviral vectors.

ieCMV: human Immediate early Cytomegalovirus promoter. WPRE : Woodchuck Post-translational Regulatory Element. VSV-G Glycoprotein from Vesicular Stomatitis Virus (serotype Indiana). Gag-Pol-Tat-rev proteins from HIV-1 Strain NDK. BGH Poly A : Polyadenylation Site from Bovine Growth Hormone gene. All following fragments come from HIV-1 Strain NL4.3 : U3RU5 : Full length Long Terminal Repeat, ϕ : Encapsidation sequence, RRE: Rev Response Element, RU5 : Truncated Long Terminal Repeat. hUBC : human Ubiquitine C promoter.

(C) Control of hACE2 expression in 293T::hACE2 reporter cell line by FACS. To verify the expression and membrane location of hACE2 protein, parental cell line (293T WT) and hACE2 expressing clone (293T::hACE2) were first labelled polyclonal antibodies anti-hACE2 (AF933, R&D) then a PE-coupled secondary antibody (A32849, Invitrogen). Samples were acquired on a Attune FACS (ThermoFisher).

(D) Control of 293T::hACE2 permissivity et specificity to S-pseudotyped lentiviral vector transduction. Parental cell line and hACE2 clone were transduced with S-pseudotyped lentiviral vector (or VSV-G, an amphotropic envelope as control). To assess that signal is specific to vector particles, equivalent heat-inactivated samples (70°C 30min in a water bath) were also tested.

(E) Threshold determination on different serum collections. To setup up the experimentation, Min-max values are determined on untransduced cells and pre-pandemic serum (dilution 1/40) respectively, Covid-19 patients are used as positive controls. To define positiveness threshold with a confidence index >99%, this value is set at Mean (pre-pandemic) – 3 Standard deviation. During sample analysis, all samples are firstly evaluated for positiveness at dilution 1/40. If the value is below threshold, then ID50 is determined as described below in a second experiment.

F-G Dilution curves and ID50 determination. First, raw datas (grey points) **(F)** are transformed into percentage of neutralization **(G)**. This percentage is determined according to mean of pre-pandemic serums (0%) and Untransduced cells (100%) values. Second, a non-linear regression is performed (plotted line in graph G) to determine the theoretical dilution that give a 50% inhibition (ID50). A pre-pandemic sample (Black point) is shown as negative example. Detection limit was set at 40 considering the maximum reached value by pre-pandemic samples.

Anna et al. Supplementary Information- Appendix 1 - Figure S4

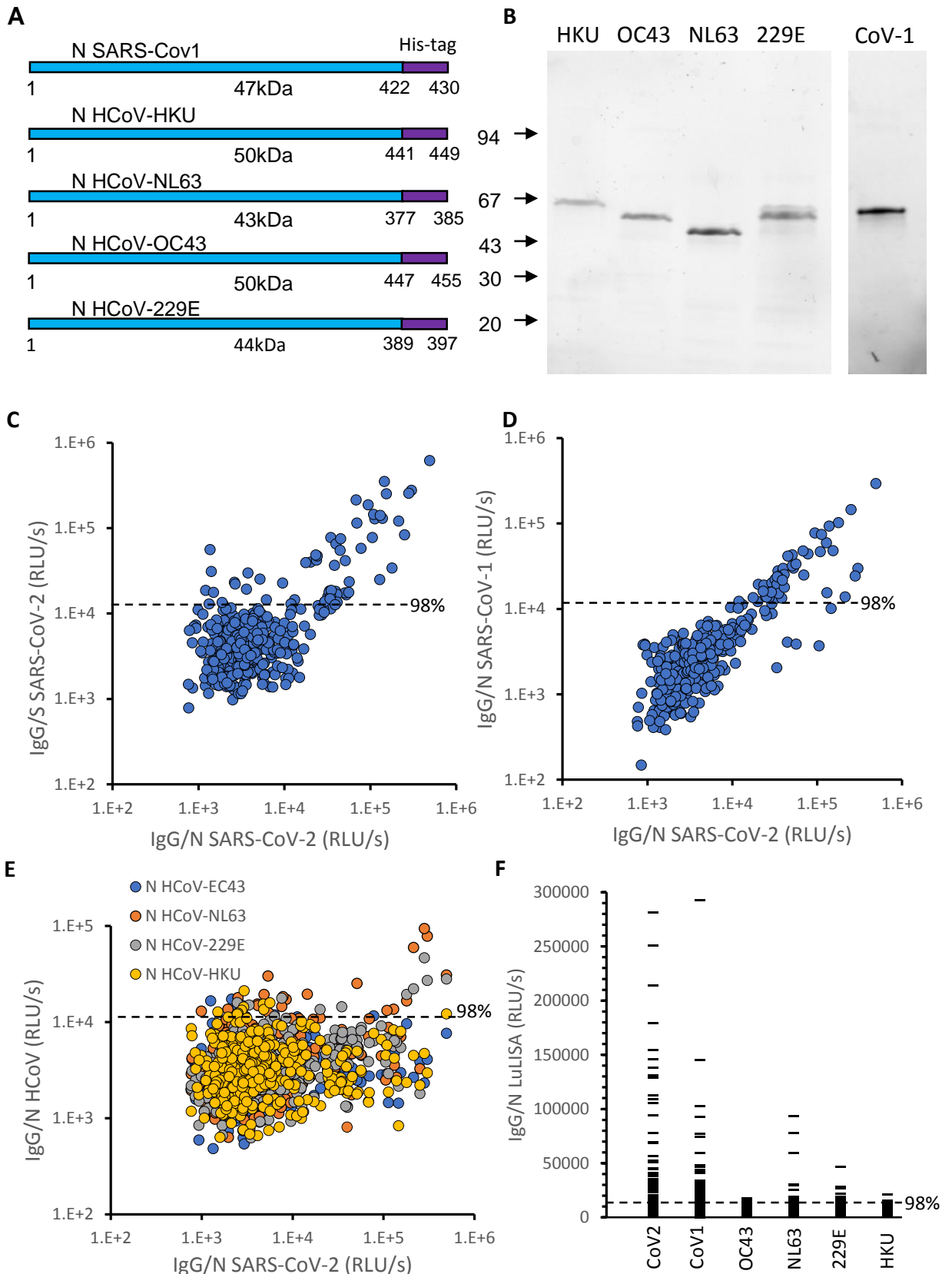


Figure S4 Specificity of assayed IgG against nucleoprotein of SARS-CoV2 vs SARS-CoV1 and seasonal virus HCoV: (A) Protein constructs with His Tag (LEHHHHHH). (B) Control of expressed and purified proteins used as targets using SDS-polyacrylamide gel electrophoresis. The gel is an acrylamide gradient from 4 to 15% . Lane 1: purified protein Nucleocapsid from HCoV-HKU, HCoV-OC43, HCoV-NL63, HCoV-229E and SARS-CoV1 (stain free system, BioRad) . (C) IgG/S vs IgG/N SARS-CoV2 from Curie series (n=376) . (D) IgG LuLISA against N SARS-CoV1 vs SARS-CoV2 (E) IgG LuLISA against N HCoV vs SARS-CoV2 from Curie series (n=376). (F) IgG LuLISA against N SARS-CoV2, SARS-CoV1, HCoV-HKU, HCoV-OC43, HCoV-NL63, HCoV-229E.

Anna et al. Supplementary Information- Appendix 1 - Figure S5

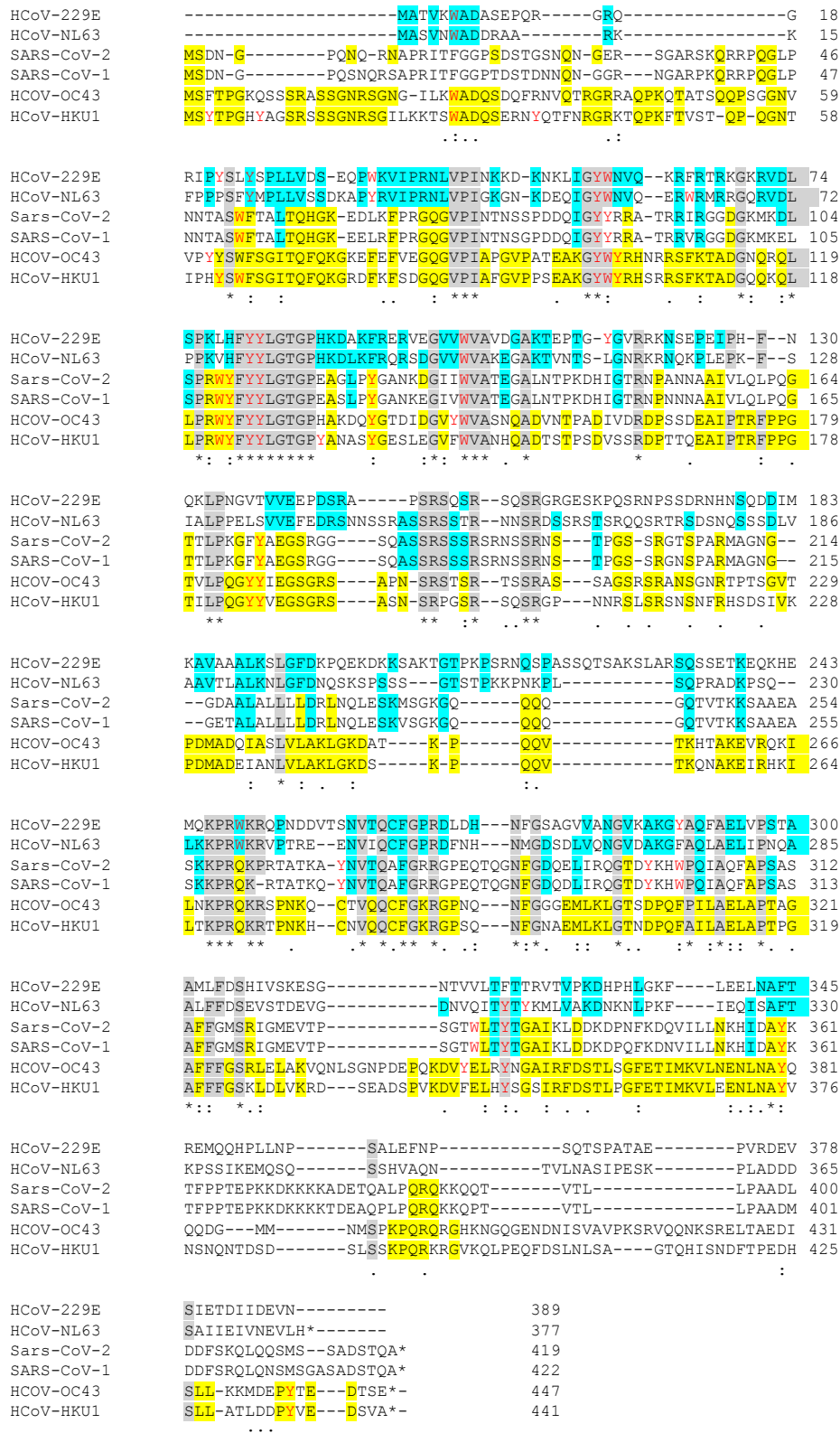


Figure S5 Sequence comparison of SARS-CoV2, SARS-CoV1 and seasonal virus nucleoproteins

Multiple sequence alignments of the four human seasonal coronavirus (HCoV) and the Sars-CoV Nucleoproteins. The alignment was performed using ClustalOmega software from <http://www.ebi.ac.uk/Tools/msa/clustalo>.

Grey background indicates conserved residues in at least 4 sequences. Conserved residues within the two alphacoronavirus and the two betacoronavirus are highlighted in yellow and blue, respectively with Sars-CoV when applicable. Residues in red denote aromatic residues potentially involved in base stacking interactions when binding to RNA.

Anna et al. Supplementary Information- Appendix 1 - Figure S6

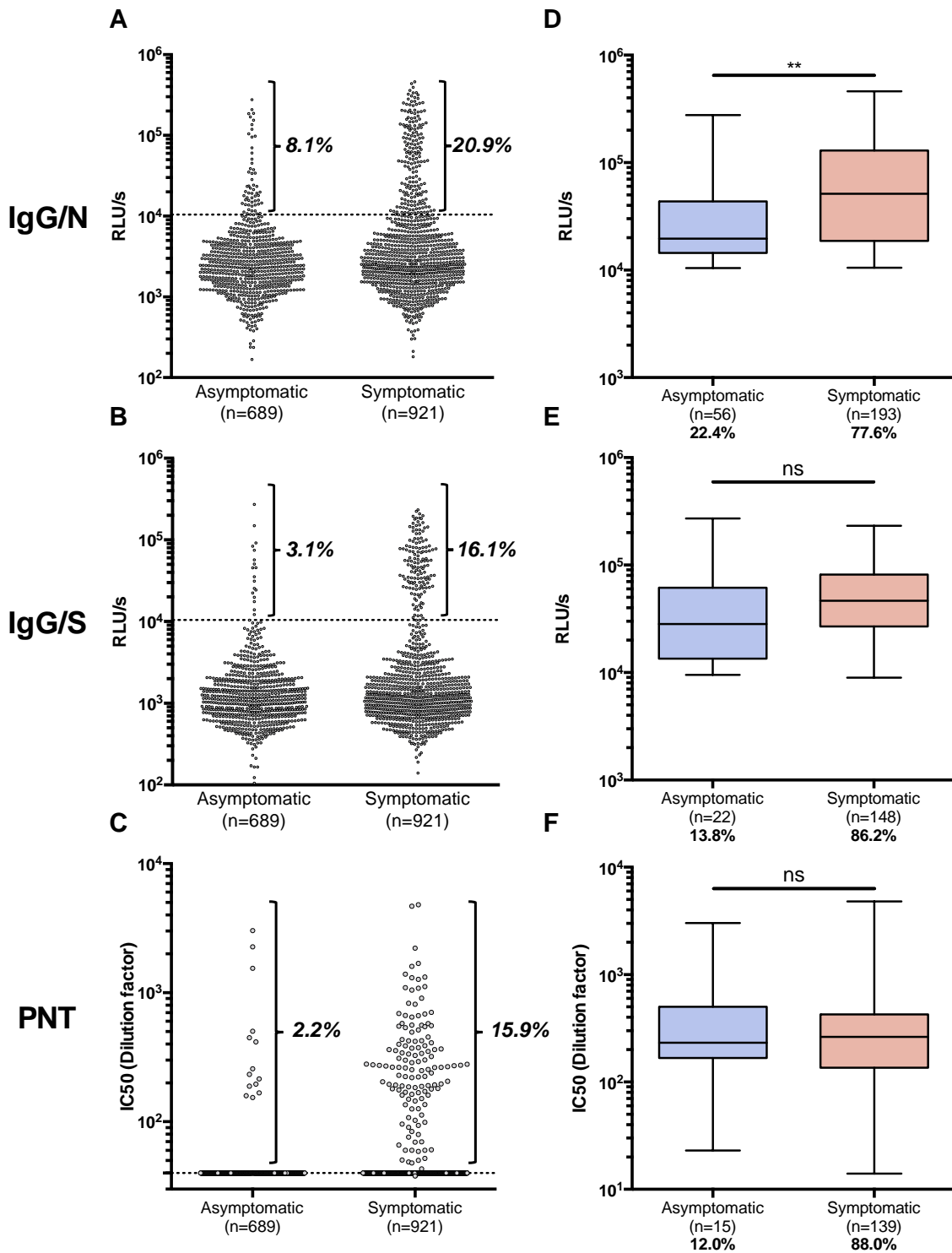


Figure S6: Serological profile comparison between asymptomatic and symptomatic workers

Institut Curie workers were separated in asymptomatic and symptomatic groups according to survey answers. Symptomatic workers reported at least one symptom (listed in table II). Global seroprevalence in LuLISA IgG/N (A), LuLISA IgG/S (B), PNT (C) are shown as raw values. Proportion of seropositive workers is indicated in bolt. Proportion of asymptomatic and symptomatic among seropositive workers in LuLISA IgG/N (D), LuLISA IgG/S (E), PNT (F) are represented by Whisker-plots. Proportion among total seropositive workers is indicated below in bolt. Statistical significance was determined using a Mann-Whitney test (**:p<0.005; ns: non significant).

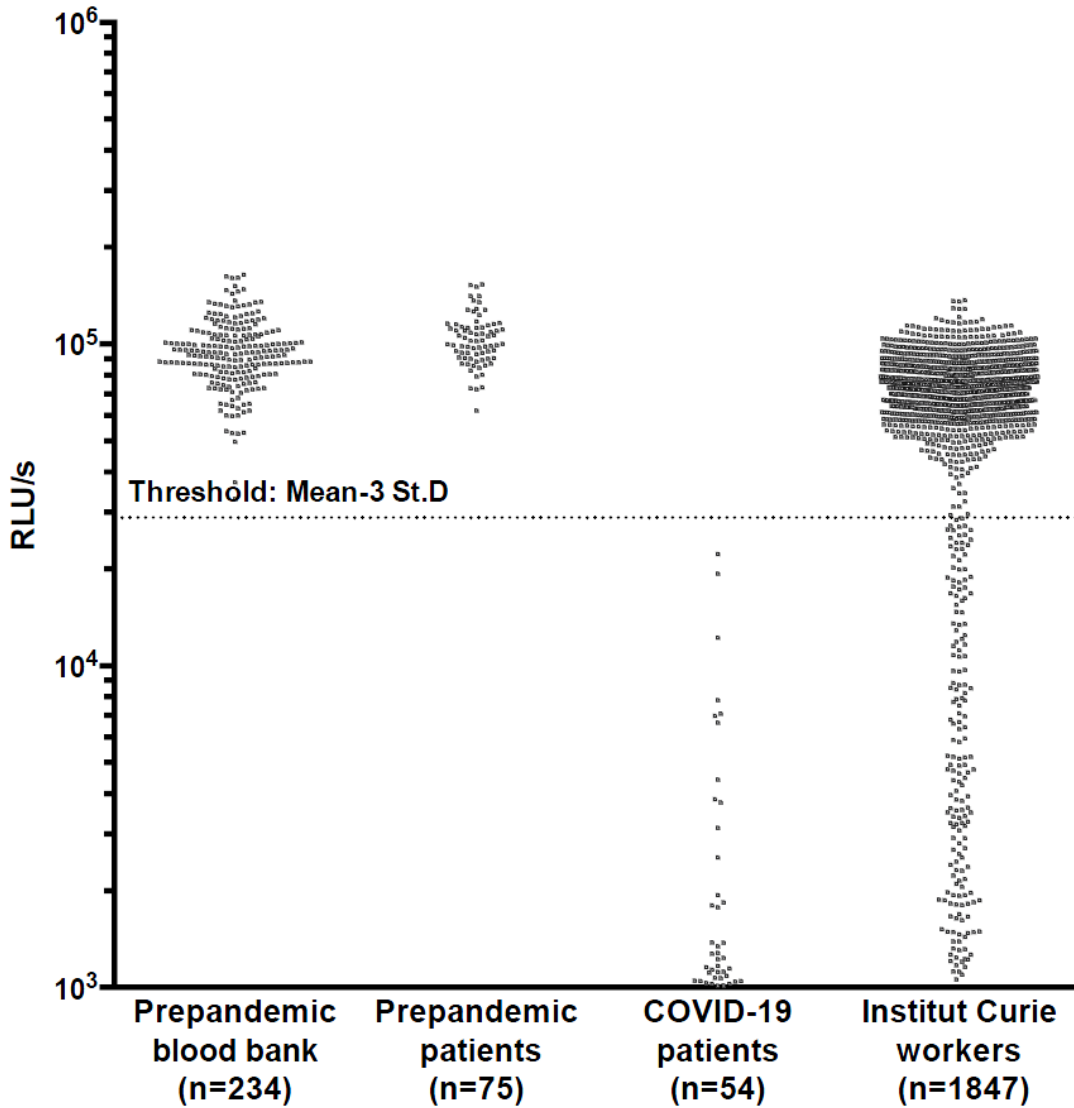


Figure S7: PNT raw data for cohorts analysis

Serum dilution factor:1/40. Positive samples are below the threshold level. Threshold is calculated on raw values of prepandemic sera from a blood bank (see Figure S3). ID50 was determined on positive samples (see Figure 1 and Figure S3)

SUPPORTING INFORMATION : APPENDIX 2

This appendix has been provided by the authors to give readers additional information about their work.

Supplement to: Anna, Goyard, et al.

High seroprevalence but short-lived immune response to SARS-CoV-2 infection in Paris

François Anna^{1*}, Sophie Goyard^{2,3*}, Ana Ines Lalanne^{4,5*}, Fabien Nevo^{1,6}, Marion Gransagne⁷, Philippe Souque⁶, Delphine Louis^{4,5}, Véronique Gillon⁸, Isabelle Turbiez⁸, François-Clement Bidard^{5,9,10}, Aline Gobillon¹¹, Alexia Savignoni¹¹, Maude Guillot-Delost^{5,12}, François Dejardin¹³, Evelyne Dufour¹³, Stéphane Petres¹³, Odile Richard-Le Goff¹⁴, Zaineb Choucha⁷, Olivier Helync¹⁵, Yves L. Janin¹⁵, Nicolas Escriou⁷, Pierre Charneau^{1,6}, Thierry Rose^{2,3**}, Olivier Lantz^{4,5,12**}

Author affiliations

1. Theravectys, Paris, France
2. Unit of Lymphocyte Cell Biology, Immunology Department, Institut Pasteur, Paris, 75015, France
3. INSERM 1221, Institut Pasteur, Paris, 75015, France
4. Laboratoire d'Immunologie Clinique, Institut Curie, Paris, 75005, France.
5. Centre d'Investigation Clinique en Biothérapie, Institut Curie (CIC-BT1428), Paris, 75005, France
6. Unit of Molecular Virology and Vaccinology, Virology Department, Institut Pasteur, Paris, 75015, France
7. Innovation Laboratory: Vaccines, Institut Pasteur, Paris, 75015, France
8. Direction of the Clinical Research, Institut Curie, Paris, 75005, France.
9. Medical Oncology Department, Institut Curie, Paris, 75005, France
10. UVSQ, Paris-Saclay University, Saint-Cloud, 92210, France
11. Biometry, Institut Curie, Paris, 75005, France
12. INSERM U932, PSL University, Institut Curie, Paris, 75005, France
13. Production and purification of recombinant proteins technological platform, Paris, 75015, France
14. Unit of Antibody in Therapy and Pathology, Institut Pasteur, Paris, 75015, France
15. Unit of Chemistry and Biocatalysis, Institut Pasteur, UMR 3523 CNRS, Paris, 75015, France

Anna et al, Supplementary Appendix 2

This questionnaire was submitted with the description of the study for ethical approval by the Comité de Protection des Personnes Méditerranée III (2020.04.18 bis_ 20.04.16.49458, 27/4/2020) registered in the clinical trial database (NCT04369066). The items of this questionnaire were recorded in the Curiosa Web-based survey.

Questionnaire

- Working Site (Paris Hospital/Saint Cloud Hospital/Orsay site/Administrative Staff/Research Center)
- Age (years)
- Weight (kg)
- Height (cm)
- Confinement (Yes/No)
- Confinement start (date)
- Working mode at the time of the blood withdrawal (Site /Institute and home-office)
- Symptoms (fever, tiredness, cough, shortness of breath, difficulty breathing, muscle aches, conjunctivitis, rhinitis, anosmia/ageusia, unusual headache, digestive disorders (vomiting, diarrhea))
- Symptom onset (date)
- Symptom end (date)
- PCR_assay done (yes/no)
- PCR_assay (date)
- PCR result (Positive/Negative)
- Treatment (hospitalization/systemic treatment)
- Hospitalization (days)
- Intensive care unit (yes/no)

SUPPORTING INFORMATION : APPENDIX 3

This appendix has been provided by the authors to give readers additional information about their work.

Supplement to: Anna, Goyard, et al.

High seroprevalence but short-lived immune response to SARS-CoV-2 infection in Paris

François Anna^{1*}, Sophie Goyard^{2,3*}, Ana Ines Lalanne^{4,5*}, Fabien Nevo^{1,6}, Marion Gransagne⁷, Philippe Souque⁶, Delphine Louis^{4,5}, Véronique Gillon⁸, Isabelle Turbiez⁸, François-Clement Bidard^{5,9,10}, Aline Gobillon¹¹, Alexia Savignoni¹¹, Maude Guillot-Delost^{5,12}, François De Jardin¹³, Evelyne Dufour¹³, Stéphane Petres¹³, Odile Richard-Le Goff¹⁴, Zaineb Choucha⁷, Olivier Helync¹⁵, Yves L. Janin¹⁵, Nicolas Escriou⁷, Pierre Charneau^{1,6}, Thierry Rose^{2,3**}, Olivier Lantz^{4,5,12**}

Author affiliations

1. Theravectys, Paris, France
2. Unit of Lymphocyte Cell Biology, Immunology Department, Institut Pasteur, Paris, 75015, France
3. INSERM 1221, Institut Pasteur, Paris, 75015, France
4. Laboratoire d'Immunologie Clinique, Institut Curie, Paris, 75005, France.
5. Centre d'Investigation Clinique en Biothérapie, Institut Curie (CIC-BT1428), Paris, 75005, France
6. Unit of Molecular Virology and Vaccinology, Virology Department, Institut Pasteur, Paris, 75015, France
7. Innovation Laboratory: Vaccines, Institut Pasteur, Paris, 75015, France
8. Direction of the Clinical Research, Institut Curie, Paris, 75005, France.
9. Medical Oncology Department, Institut Curie, Paris, 75005, France
10. UVSQ, Paris-Saclay University, Saint-Cloud, 92210, France
11. Biometry, Institut Curie, Paris, 75005, France
12. INSERM U932, PSL University, Institut Curie, Paris, 75005, France
13. Production and purification of recombinant proteins technological platform, Paris, 75015, France
14. Unit of Antibody in Therapy and Pathology, Institut Pasteur, Paris, 75015, France
15. Unit of Chemistry and Biocatalysis, Institut Pasteur, UMR 3523 CNRS, Paris, 75015, France

178 F	27	30/04/2020	5380	1230	0	0	13/08/2020	1015	1033	0	0	1	01/03/2020	1	1	1	0	0	0	0	0	1	0	1	0	0
179 F	35	30/04/2020	7853	989	0	0	16/07/2020	3511	565	0	0	1	21/03/2020	0	1	1	0	0	0	0	1	0	1	0	0	
180 F	44	30/04/2020	6589	4699	0	0	18/06/2020	4675	3568	0	0	0	18/03/2020	0	1	0	0	0	0	0	0	0	0	1	0	
181 F	51	30/04/2020	9207	1518	0	0	22/06/2020	3941	1679	0	0	1	27/03/2020	0	1	0	0	0	0	0	1	1	1	0	1	
182 F	33	30/04/2020	3841	1906	0	0	20/08/2020	320	872	0	0	0	03/04/2020	0	0	0	0	0	0	0	1	0	1	0	0	
183 F	49	30/04/2020	4177	4125	0	0	20/07/2020	2057	2843	0	0	0	0	0	0	0	0	0	0	0	0	0	0	0	0	
184 F	34	30/04/2020	2341	1229	0	0	24/06/2020	2895	3450	0	0	1	01/03/2020	0	0	1	1	1	0	0	0	0	0	1	0	
185 F	32	30/04/2020	3098	1352	0	0	22/06/2020	1861	1412	0	0	0	0	0	0	0	0	0	0	0	0	0	0	0	0	
186 F	44	30/04/2020	3751	1821	0	0	29/06/2020	2341	2086	0	0	1	13/03/2020	0	1	1	1	1	0	1	1	1	0	1	0	
187 F	62	30/04/2020	104082	152905	87	1	22/06/2020	79907	107516	0	1	0	0	0	0	0	0	0	0	0	0	0	0	0	0	
188 F	62	30/04/2020	4801	1390	0	0	19/06/2020	1783	1055	0	0	0	0	0	0	0	0	0	0	0	0	0	0	0	0	
189 F	56	30/04/2020	116668	210097	95	1	19/06/2020	101509	160225	90	1	1	16/03/2020	1	1	1	1	0	1	1	1	1	1	1	31/03/2020	
190 F	41	30/04/2020	2122	591	0	0	#N/A	#N/A	#N/A	#N/A	#N/A	0	0	0	0	0	0	0	0	0	0	0	0	0	0	
191 F	30	30/04/2020	1917	1490	0	0	03/07/2020	1158	1688	0	0	1	11/03/2020	0	0	0	0	0	0	0	0	0	0	1	0	
192 F	40	30/04/2020	1712	1050	0	0	15/07/2020	2812	1304	0	0	0	0	0	0	0	0	0	0	0	0	0	0	0	16/03/2020	
193 F	55	30/04/2020	1920	1155	0	0	06/07/2020	1083	760	0	0	0	0	0	0	0	0	0	0	0	0	0	0	0	0	
194 F	27	30/04/2020	71371	29653	67	1	#N/A	#N/A	#N/A	#N/A	#N/A	1	08/03/2020	0	1	1	0	0	0	0	0	1	0	1	0	
195 M	31	30/04/2020	2199	2085	0	0	#N/A	#N/A	#N/A	#N/A	#N/A	1	15/03/2020	1	1	1	0	0	0	1	0	1	0	1	0	
196 F	29	30/04/2020	772	1893	0	0	#N/A	#N/A	#N/A	#N/A	#N/A	0	0	0	0	0	0	0	0	0	0	0	0	0	0	
197 M	47	30/04/2020	4577	1494	0	0	25/06/2020	2273	2782	0	0	0	0	0	0	0	0	0	0	0	0	0	0	0	0	
198 F	32	04/05/2020	255125	51975	96	1	01/07/2020	138798	30763	94	1	1	29/03/2020	0	1	1	1	1	0	0	0	0	0	1	0	
199 F	36	04/05/2020	2119	5315	0	0	#N/A	#N/A	#N/A	#N/A	#N/A	1	19/03/2020	1	1	1	1	1	0	0	1	0	1	0	20/03/2020	
200 M	38	04/05/2020	211	576	0	0	#N/A	#N/A	#N/A	#N/A	#N/A	1	03/04/2020	1	1	0	0	0	0	0	1	0	1	0	0	
201 F	29	04/05/2020	137633	93600	89	1	03/07/2020	29891	84517	73	1	1	18/03/2020	0	0	0	0	0	0	1	0	1	1	0	0	
202 F	52	04/05/2020	3138	5077	0	0	25/06/2020	3060	3890	0	0	0	15/04/2020	0	1	0	0	0	0	0	0	0	0	0	0	
203 F	26	04/05/2020	2306	789	0	0	11/06/2020	1170	955	0	0	1	27/03/2020	0	1	1	1	1	0	0	0	0	1	1	03/04/2020	
204 F	27	04/05/2020	1765	1523	0	0	#N/A	#N/A	#N/A	#N/A	#N/A	1	09/03/2020	0	1	0	0	0	0	1	0	1	0	0	0	
205 F	49	04/05/2020	25474	21638	85	1	02/07/2020	12465	19279	82	1	1	23/03/2020	1	1	1	1	1	0	0	1	1	0	1	23/03/2020	
206 F	56	04/05/2020	7912	1925	0	0	21/07/2020	1816	1915	0	0	0	10/03/2020	0	1	0	0	0	0	0	0	0	0	1	0	
207 M	54	04/05/2020	5609	3546	0	0	02/07/2020	5219	5580	0	0	0	06/04/2020	0	1	0	0	0	0	0	0	0	0	0	0	
208 M	53	04/05/2020	8048	777	0	0	02/07/2020	7970	1001	4	1	1	23/04/2020	0	1	1	0	0	0	1	0	1	0	0	0	
209 M	58	04/05/2020	6990	690	0	0	29/06/2020	6319	535	0	0	0	0	0	0	0	0	0	0	0	0	0	0	0	1	
210 F	45	04/05/2020	igM positive	3883	4777	0	0	04/06/2020	2624	2352	0	0	1	21/03/2020	0	1	0	0	0	0	0	0	0	0	1	22/04/2020
211 F	43	04/05/2020	3546	902	0	0	02/07/2020	1715	667	0	0	0	27/01/2020	0	1	1	0	0	0	1	1	1	0	1	31/03/2020	
212 F	38	04/05/2020	3450	672	0	0	#N/A	#N/A	#N/A	#N/A	#N/A	0	0	0	0	0	0	0	0	0	0	0	0	0	0	
213 F	37	04/05/2020	2752	2178	0	0	18/08/2020	479	334	0	0	0	0	0	0	0	0	0	0	0	0	0	0	0	0	
214 F	63	04/05/2020	5289	1311	0	0	07/07/2020	6081	1626	0	0	0	0	0	0	0	0	0	0	0	0	0	0	0	0	
215 F	41	04/05/2020	igG traces	9404	1779	0	0	02/07/2020	5974	3320	0	0	1	15/01/2020	1	1	1	1	1	1	0	1	0	0	0	
216 F	26	04/05/2020	1802	651	0	0	#N/A	#N/A	#N/A	#N/A	#N/A	1	04/03/2020	1	1	1	1	1	0	0	0	1	0	0	0	
218 F	23	04/05/2020	3410	1614	0	0	06/07/2020	4176	2790	0	0	0	0	0	0	0	0	0	0	0	0	0	0	0	0	
220 F	41	04/05/2020	4927	2494	0	0	27/07/2020	4989	3518	0	0	1	29/04/2020	0	0	0	0	0	0	0	0	0	0	0	0	
221 F	34	04/05/2020	2823	1226	0	0	26/08/2020	1001	2307	0	0	0	03/03/2020	0	1	1	1	1	1	0	0	0	0	1	0	
222 F	28	04/05/2020	140418	109849	93	1	04/06/2020	101211	75975	67	1	1	01/04/2020	0	1	1	0	0	1	1	0	0	1	0	1	
223 F	56	04/05/2020	6956	1271	0	0	23/07/2020	8408	893	0	0	1	30/03/2020	0	1	1	0	0	1	0	0	1	1	1	06/04/2020	
224 F	38	04/05/2020	negative	4557	7407	0	0	06/08/2020	2378	9080	0	1	13/03/2020	1	1	1	0	0	0	1	0	0	1	1	0	
225 F	56	04/05/2020	4454	3857	0	0	04/08/2020	2088	2380	0	0	0	0	0	0	0	0	0	0	0	0	0	0	0	0	
226 F	59	04/05/2020	4499	871	0	0	25/06/2020	2853	1047	0	0	1	30/03/2020	0	1	1	0	0	0	0	0	1	0	0	0	
227 F	44	04/05/2020	3447	3932	0	0	30/06/2020	3102	3685	2	1	1	25/02/2020	0	1	0	0	0	0	0	1	0	1	0	0	
228 F	50	04/05/2020	2155	584	0	0	16/06/2020	1465	1213	0	0	0	0	0	0	0	0	0	0	0	0	0	0	0	0	
229 F	80	04/05/2020	83173	84697	90	1	26/06/2020	31812	59584	81	1	1	21/03/2020	0	1	1	0	0	0	1	0	1	1	0	24/03/2020	
230 F	28	04/05/2020	942	845	0	0	09/07/2020	1912	827	0	0	1	21/02/2020	1	1	1	0	0	1	1	0	1	0	0	0	
231 F	53	04/05/2020	4236	983	0	0	16/06/2020	4906	2130	0	0	0	0	0	0	0	0	0	0	0	0	0	0	0	0	
232 F	42	04/05/2020	6936	2657	0	0	11/06/2020	3968	1437	0	0	1	0	0	0	0	0	0	0	0	0	0	1	0	0	
233 M	52	04/05/2020	2501	4516	0	0	11/06/2020	1504	5053	0	0	1	0	0	0	0	0	0	1	0	0	0	0	0	0	
234 F	43	04/05/2020	9906	1252	0	0	26/06/2020	6731	959	0	0	0	0	0	0	0	0	0	0	0	0	0	0	0	0	
235 F	41	04/05/2020	3598	826	0	0	09/07/2020	2618	778	0	0	0	0	0	0	0	0	0	0	0	0	0	0	0	0	
236 M	38	04/05/2020	1934	6058	0	0	01/07/2020	1613	999	0	0	0	0	0	0	0	0	0	0	0	0	0	0	0	0	
237 F	48	04/05/2020	60298	95762	28	1	#N/A	#N/A	#N/A	#N/A	#N/A	1	0	0	1	0	0	0	0	0	0	0	1	0	0	
238 F	30	04/05/2020	3232	728	0	0	02/07/2020	4199	1619	0	0	1	20/01/2020	1	1	1	1	1	0	0	0	0	1	0	0	
239 F	43	04/05/2020	4231	3193	0	0	10/07/2020	3752	1541	0	0	0	01/04/2020	0	1	0	0	0	0	0	1	1	0	1	0	
240 F	29	04/05/2020	2737	3107	0	0	20/07/2020	1012	740	0	0	0	0	0	0	0	0	0	0	0	0	0	0	0	0	
241 F	54	04/05/2020	34385	4321	0	0	02/07/2020	14743	196																	

370 F	34	05/05/2020	91928	11761	79	1	25/08/2020	44315	23610	0	1	1	0	1	1	1	0	1	0
371 M	47	05/05/2020	4794	764	0	0	#N/A	#N/A	#N/A	#N/A	#N/A	1	20/03/2020	0	1	0	0	0	0
372 F	26	05/05/2020	2085	520	0	0	03/06/2020	722	530	0	0	0	0	0	0	0	0	0	0
373 M	55	06/05/2020	1699	270	0	0	#N/A	#N/A	#N/A	#N/A	#N/A	1	19/03/2020	1	0	0	0	0	0
374 F	44	06/05/2020	4868	682	0	0	09/07/2020	2166	1326	0	0	0	0	0	0	0	0	0	0
375 F	44	06/05/2020	2250	559	0	0	#N/A	#N/A	#N/A	#N/A	#N/A	1	26/03/2020	0	1	0	0	0	0
376 F	27	06/05/2020	3283	474	0	0	03/06/2020	683	485	0	0	0	0	0	0	0	0	0	0
377 M	42	06/05/2020	1271	485	0	0	#N/A	#N/A	#N/A	#N/A	#N/A	0	0	0	0	0	0	0	0
378 M	41	06/05/2020	4419	538	0	0	#N/A	#N/A	#N/A	#N/A	#N/A	1	06/03/2020	0	1	1	0	0	0
379 F	25	06/05/2020	1878	217	0	0	#N/A	#N/A	#N/A	#N/A	#N/A	1	24/04/2020	0	0	0	0	0	0
380 F	51	06/05/2020	1221	430	0	0	01/07/2020	2000	518	0	0	0	0	0	0	0	0	0	0
381 F	57	06/05/2020	2533	545	0	0	08/07/2020	1041	682	0	0	1	20/04/2020	0	1	0	0	0	0
382 F	33	06/05/2020	1962	641	0	0	02/07/2020	2631	933	0	0	0	0	0	0	0	0	0	0
383 M	44	06/05/2020	2219	328	0	0	01/09/2020	734	1095	0	0	0	0	0	0	0	0	0	0
384 F	50	06/05/2020	3490	496	0	0	24/06/2020	3909	539	0	0	0	0	0	0	0	0	0	0
385 F	26	06/05/2020	2225	916	0	0	#N/A	#N/A	#N/A	#N/A	#N/A	0	0	0	0	0	0	0	0
386 F	61	06/05/2020	3682	1642	0	0	25/06/2020	4186	4861	0	0	0	0	0	0	0	0	0	0
387 F	49	06/05/2020	8616	661	0	0	15/07/2020	8757	349	0	0	1	0	0	0	0	0	0	0
388 F	33	06/05/2020	2715	918	0	0	#N/A	#N/A	#N/A	#N/A	#N/A	0	0	0	0	0	0	0	0
389 F	45	06/05/2020	3449	519	0	0	25/06/2020	858	509	0	0	1	04/04/2020	0	1	0	0	0	0
390 F	51	06/05/2020	5687	508	0	0	29/06/2020	2878	1496	0	0	1	30/03/2020	0	1	0	0	0	0
391 F	49	06/05/2020	2385	455	0	0	16/07/2020	1325	585	0	0	1	23/03/2020	1	1	0	0	0	0
392 F	56	06/05/2020	2852	789	0	0	02/07/2020	2317	1961	0	0	0	0	0	0	0	0	0	0
393 F	37	06/05/2020	5210	1168	0	0	26/06/2020	1486	2103	0	0	1	05/03/2020	0	0	0	0	0	0
394 F	42	06/05/2020	3287	825	0	0	25/06/2020	2230	1360	0	0	0	0	0	0	0	0	0	0
395 F	30	06/05/2020	2650	1879	0	0	30/06/2020	3313	1696	0	0	1	05/05/2020	0	0	0	0	0	0
396 F	24	05/05/2020	2003	681	0	0	26/06/2020	3608	1318	2	1	0	0	0	0	0	0	0	0
397 F	57	06/05/2020	3364	749	0	0	26/06/2020	4550	504	0	0	1	0	0	0	0	0	0	0
398 F	26	05/05/2020	1096	370	0	0	#N/A	#N/A	#N/A	#N/A	#N/A	1	11/03/2020	1	1	1	0	0	0
399 F	28	06/05/2020	5588	740	0	0	#N/A	#N/A	#N/A	#N/A	#N/A	0	0	0	0	0	0	0	0
400 F	21	06/05/2020	3947	644	0	0	06/07/2020	3692	2145	0	0	1	18/03/2020	0	1	0	0	0	0
401 F	25	06/05/2020	1080	1071	0	0	#N/A	#N/A	#N/A	#N/A	#N/A	1	25/03/2020	0	1	1	1	0	0
402 F	29	05/05/2020	1409	708	0	0	26/06/2020	2062	1326	0	0	1	0	0	0	0	0	0	0
403 F	48	06/05/2020	9100	2285	0	0	16/07/2020	6960	1139	0	0	0	0	0	0	0	0	0	0
404 F	26	06/05/2020	7190	1894	0	0	24/06/2020	1999	4323	0	0	0	0	0	0	0	0	0	0
405 F	49	06/05/2020	1853	1508	0	0	22/07/2020	212	233	0	0	0	0	0	0	0	0	0	0
406 F	44	06/05/2020	9996	1445	0	0	09/07/2020	9417	2622	0	0	0	0	0	0	0	0	0	0
407 F	33	06/05/2020	2380	574	0	0	30/06/2020	1754	874	0	0	0	0	0	0	0	0	0	0
408 F	45	06/05/2020	1155	1228	0	0	02/07/2020	1024	1995	10	1	1	17/03/2020	1	1	1	1	0	0
409 M	38	06/05/2020	5095	1080	0	0	#N/A	#N/A	#N/A	#N/A	#N/A	1	1	1	0	0	0	0	0
410 M	41	06/05/2020 igM traces	2987	1308	0	0	#N/A	#N/A	#N/A	#N/A	#N/A	1	15/03/2020	1	1	0	0	0	0
411 F	63	06/05/2020	1564	797	0	0	11/06/2020	1471	3877	0	0	1	17/03/2020	0	1	1	1	0	0
412 F	60	04/05/2020	3300	3510	0	0	#N/A	#N/A	#N/A	#N/A	#N/A	0	0	0	0	0	0	0	0
413 F	36	06/05/2020 negative	1513	1153	0	0	12/06/2020	1260	4622	0	0	1	14/02/2020	1	1	1	0	0	0
414 M	52	06/05/2020	968	394	0	0	02/07/2020	1955	473	0	0	1	16/01/2020	0	1	0	0	0	0
415 F	32	06/05/2020	1766	494	0	0	#N/A	#N/A	#N/A	#N/A	#N/A	1	13/03/2020	0	1	1	0	0	0
416 F	37	06/05/2020	3791	765	0	0	#N/A	#N/A	#N/A	#N/A	#N/A	1	11/03/2020	1	1	1	0	0	0
417 F	26	06/05/2020	2495	866	0	0	#N/A	#N/A	#N/A	#N/A	#N/A	1	06/04/2020	0	1	0	0	0	0
418 M	66	06/05/2020	1897	515	0	0	09/07/2020	1663	1338	0	0	0	0	0	0	0	0	0	0
419 M	31	06/05/2020	2092	831	0	0	07/07/2020	1324	1324	0	0	1	07/03/2020	0	0	0	0	0	0
421 F	27	06/05/2020	2699	990	0	0	03/06/2020	1317	1669	0	0	0	0	0	0	0	0	0	0
422 F	52	06/05/2020 negative	2115	1058	0	0	01/07/2020	951	1776	0	0	1	21/03/2020	0	1	1	1	0	0
423 M	34	06/05/2020	3623	988	0	0	#N/A	#N/A	#N/A	#N/A	#N/A	0	0	0	0	0	0	0	0
424 F	31	06/05/2020	2397	768	0	0	11/06/2020	2186	1838	0	0	1	30/03/2020	0	1	0	0	0	0
425 F	46	06/05/2020	190967	32660	90	1	03/07/2020	122201	62768	0	1	1	29/03/2020	0	0	0	0	0	0
426 F	45	06/05/2020	3343	2811	0	0	03/07/2020	4460	3144	0	0	0	0	0	0	0	0	0	0
427 F	34	06/05/2020	7989	1324	0	0	06/07/2020	4124	5884	0	0	1	0	0	0	0	0	0	0
428 M	28	06/05/2020	2407	1550	0	0	#N/A	#N/A	#N/A	#N/A	#N/A	1	05/04/2020	1	1	0	0	0	0
429 F	28	06/05/2020	15939	23150	2	1	03/07/2020	10334	54251	89	1	1	05/03/2020	0	1	0	0	0	0
430 F	30	06/05/2020	6359	846	0	0	#N/A	#N/A	#N/A	#N/A	#N/A	0	0	0	0	0	0	0	0
431 F	54	06/05/2020	4034	821	0	0	#N/A	#N/A	#N/A	#N/A	#N/A	0	0	0	0	0	0	0	0
432 F	28	06/05/2020	7428	562	0	0	30/07/2020	3507	1082	0	0	0	13/03/2020	0	1	0	1	0	0
433 F	24	06/05/2020	2732	884	0	0	23/07/2020	732	1056	0	0	0	1	1	1	0	0	0	0
434 F	24	06/05/2020	3133	1058	0	0	25/06/2020	2422	2741	0	0	1	24/03/2020	1	1	0	0	0	0
435 F	37	06/05/2020	37875	923	0	1	01/07/2020	47894	1021	0	1	1	06/04/2020	0	1	0	0	0	0
436 M	30	06/05/2020	3811	1055	0	0	#N/A	#N/A	#N/A	#N/A	#N/A	0	0	0	0	0	0	0	0
437 F	58	06/05/2020	1463	341	0	0	30/07/2020	535	580	0	0	1	25/03/2020	0	1	0	0	0	0
438 M	39	06/05/2020	3138	1862	0	0	#N/A	#N/A	#N/A	#N/A	#N/A	1	05/03/2020	0	1	0	0	0	0
439 F	33	06/05/2020	3524	814	0	0	#N/A	#N/A	#N/A	#N/A	#N/A	1	29/04/2020	0	0	0	0	0	0
440 F	34	06/05/2020	3742	1283	0	0	08/07/2020	1597	1285	0	0	1	02/05/2020	0	1	0	0	0	0
441 F	54	06/05/2020	2621	399	0	0	26/06/2020	733	701	0	0	1	06/04/2020	0	0	0	0	0	0
442 F	39	06/05/2020	4392	1083	0	0	#N/A	#N/A	#N/A	#N/A	#N/A	0	0	0	0	0	0	0	0
443 F	47	06/05/2020	2019	623	0	0	#N/A	#N/A	#N/A	#N/A	#N/A	1	31/03/2020	1	1	0	0	0	0
444 M	33	06/05/2020	1643	593	0	0	#N/A	#N/A	#N/A	#N/A	#N/A	0	0	0	0	0	0	0	0
445 F	59	06/05/2020	1726	561	0	0	30/06/2020	830	1177	0	0	0	0	0	0	0	0	0	0
446 F	46	06/05/2020	1504	899	0	0	10/06/2020	712	2275	0	0	1	07/03/2020	0	1	0	0	0	0
447 F	48	07/05/2020	59588	33687	5	1	06/08/2020	27002	20562	3	1	1	20/03/2020	0	1	0	0	0	0
448 F	42	07/05/2020	70690	25703	85	1	#N/A</												

651 F	48	12/05/2020	1528	4951	0	0	23/07/2020	710	1971	0	0	1	0	1	0	0	0	0	0	1	0	0	1	0	0
652 F	31	12/05/2020	3837	575	0	0	23/07/2020	1412	1934	0	0	0	1	15/04/2020	0	1	0	0	0	0	0	0	0	1	0
653 M	31	12/05/2020	2127	404	0	0	23/07/2020	839	197	0	0	0	1	23/04/2020	0	0	0	0	0	0	0	0	0	1	0
654 F	50	12/05/2020	7549	542	0	0	21/07/2020	2714	693	0	0	0	0	0	0	0	0	0	0	0	0	0	0	0	0
655 F	40	12/05/2020	6660	1169	0	0	01/09/2020	7378	1547	0	0	0	0	12/03/2020	0	0	0	0	0	1	0	0	0	1	1
656 F	38	12/05/2020	874	1385	0	0	08/07/2020	2337	1388	0	0	0	0	0	0	0	0	0	0	0	0	0	0	0	0
657 F	55	12/05/2020	1136	455	0	0	#N/A	#N/A	#N/A	#N/A	#N/A	#N/A	0	0	0	0	0	0	0	0	0	0	0	0	0
658 F	39	12/05/2020	1722	639	0	0	#N/A	#N/A	#N/A	#N/A	#N/A	#N/A	0	0	0	0	0	0	0	0	0	0	0	0	0
659 F	32	12/05/2020	1369	806	0	0	29/07/2020	733	482	0	0	0	0	0	0	0	0	0	0	0	0	0	0	0	0
660 F	29	12/05/2020	3030	3406	0	0	16/07/2020	4156	2058	0	0	1	07/02/2020	0	1	0	0	1	1	0	0	0	1	0	0
661 F	32	12/05/2020	844	578	0	0	16/07/2020	1094	589	0	0	1	22/03/2020	1	1	0	1	1	1	0	0	0	1	1	1
662 F	60	12/05/2020	744	776	0	0	07/07/2020	2359	1040	0	0	0	0	0	0	0	0	0	0	0	0	0	0	0	0
663 M	32	12/05/2020	1182	963	0	0	#N/A	#N/A	#N/A	#N/A	#N/A	#N/A	0	0	0	0	0	0	0	0	0	0	0	0	0
664 F	55	12/05/2020	5474	1317	0	0	23/06/2020	3212	2522	0	0	0	0	0	0	0	0	0	0	1	1	0	0	0	0
665 F	54	12/05/2020 negative	3325	4270	0	0	#N/A	#N/A	#N/A	#N/A	#N/A	#N/A	1	16/03/2020	1	1	0	0	1	1	0	0	1	0	0
666 F	43	15/05/2020	2238	476	0	0	07/07/2020	4813	735	0	0	2	11/03/2020	0	0	0	0	0	0	0	0	0	0	1	0
667 F	30	12/05/2020	2259	1006	0	0	#N/A	#N/A	#N/A	#N/A	#N/A	#N/A	1	23/02/2020	0	1	0	0	0	0	0	0	1	0	0
668 F	33	12/05/2020	3744	4135	0	0	15/07/2020	2222	1381	0	0	0	0	0	0	0	0	0	0	0	0	0	0	0	0
669 M	39	12/05/2020	491	1682	0	0	21/07/2020	224	278	0	0	0	0	0	0	0	0	0	0	0	0	0	0	0	0
670 F	58	12/05/2020	1952	410	0	0	03/07/2020	1461	546	0	0	0	0	0	0	0	0	0	0	0	0	0	0	0	0
671 M	26	12/05/2020	3665	3978	0	0	16/07/2020	7754	2285	0	0	0	0	0	0	0	0	0	0	0	0	0	0	0	0
672 F	59	12/05/2020	2356	2567	0	0	02/07/2020	1895	1888	0	0	0	0	0	0	0	0	0	0	0	0	0	0	0	0
673 F	48	12/05/2020	4104	2343	0	0	07/07/2020	2696	1354	0	0	0	0	0	0	0	0	0	0	0	0	0	0	0	0
674 F	26	12/05/2020	18251	53897	82	1	07/07/2020	12418	40410	32	1	19/03/2020	0	1	1	0	0	0	0	0	1	1	1	0	0
675 F	28	12/05/2020	2676	2109	0	0	07/07/2020	4116	1686	0	0	0	0	0	0	0	0	0	0	0	0	0	0	0	0
676 F	32	12/05/2020	1570	1636	0	0	07/07/2020	1579	1614	0	0	0	0	0	0	0	0	0	0	0	0	0	0	0	0
677 F	55	12/05/2020	3027	406	0	0	16/06/2020	3182	915	0	0	0	0	0	0	0	0	0	0	0	0	0	0	0	0
678 F	24	12/05/2020	2301	2225	0	0	12/06/2020	2273	1197	0	0	0	0	0	0	0	0	0	0	0	0	0	0	0	0
679 F	32	12/05/2020	6584	5913	0	0	10/06/2020	2968	3376	0	0	0	0	0	0	0	0	0	0	0	0	0	0	0	0
680 F	48	13/05/2020	2351	837	0	0	#N/A	#N/A	#N/A	#N/A	#N/A	#N/A	0	0	0	0	0	0	0	0	0	0	0	0	0
681 F	44	13/05/2020	2752	4318	0	0	22/07/2020	1146	1192	0	0	0	1	18/03/2020	0	1	0	1	0	0	0	0	0	1	1
682 M	66	13/05/2020	2575	1070	0	0	#N/A	#N/A	#N/A	#N/A	#N/A	#N/A	0	0	0	0	0	0	0	0	0	0	0	0	0
683 M	63	13/05/2020	1447	451	0	0	16/07/2020	1247	460	0	0	0	07/02/2020	0	0	0	0	0	0	0	0	0	0	0	0
684 F	47	13/05/2020	531	479	0	0	25/08/2020	604	705	0	0	0	0	0	0	0	0	0	0	0	0	0	0	0	0
685 F	25	13/05/2020	43606	139083	99	1	07/07/2020	29197	128926	93	1	24/03/2020	1	1	0	0	0	1	0	1	1	1	1	0	0
686 F	71	13/05/2020	177989	234405	99	1	11/08/2020	78196	104388	0	1	17/03/2020	1	1	1	1	0	1	0	0	0	1	0	1	25/03/2020
687 F	28	13/05/2020	2316	601	0	0	07/07/2020	1909	876	0	0	1	05/05/2020	0	1	0	0	1	0	1	0	0	1	0	0
688 F	40	13/05/2020	1731	831	0	0	07/07/2020	1331	642	0	0	0	0	0	0	0	0	0	0	0	0	0	0	0	0
689 M	45	13/05/2020	2131	1075	0	0	09/07/2020	1476	1545	0	0	0	0	0	0	0	0	0	0	0	0	0	0	0	0
690 F	50	13/05/2020	9179	2207	0	0	11/08/2020	3028	1339	0	0	0	0	0	0	0	0	0	0	0	0	0	0	0	0
691 F	22	13/05/2020	28929	7501	0	0	#N/A	#N/A	#N/A	#N/A	#N/A	#N/A	1	03/04/2020	0	0	0	0	0	0	0	0	0	0	0
692 F	28	13/05/2020	6183	1452	0	0	#N/A	#N/A	#N/A	#N/A	#N/A	#N/A	0	0	0	0	0	0	0	0	0	0	0	0	0
693 F	35	13/05/2020	2208	858	0	0	19/06/2020	907	979	0	0	0	03/04/2020	0	0	1	0	0	0	0	0	0	0	1	05/04/2020
694 F	30	13/05/2020	5354	1761	0	0	15/06/2020	2625	2503	0	0	1	06/04/2020	0	0	1	0	0	0	0	0	0	1	0	0
695 F	29	13/05/2020	7518	528	0	0	08/07/2020	6097	478	0	0	0	0	0	0	0	0	0	0	0	0	0	0	0	0
696 M	32	13/05/2020	4079	4123	0	0	24/06/2020	4925	6109	0	0	1	18/03/2020	1	1	1	1	1	0	0	0	0	1	0	30/03/2020
697 F	39	13/05/2020	4992	2397	0	0	24/06/2020	1644	1835	6	1	0	0	0	0	0	0	0	0	0	0	0	0	0	0
698 F	33	13/05/2020	6353	1887	0	0	09/07/2020	2754	2030	0	0	0	0	0	0	0	0	0	0	0	0	0	0	0	0
699 F	29	13/05/2020	1444	1032	0	0	15/07/2020	5566	938	0	0	1	0	0	0	0	0	0	0	0	0	0	0	1	0
700 F	57	13/05/2020	543	212	0	0	30/07/2020	609	309	0	0	0	0	0	0	0	0	0	0	0	0	0	0	0	0
701 F	28	13/05/2020	3925	3429	0	0	07/07/2020	1902	1123	0	0	0	0	0	0	0	0	0	0	0	0	0	0	0	0
702 F	64	13/05/2020	91579	49253	98	1	23/07/2020	53777	40084	12	1	18/03/2020	1	1	1	0	0	0	1	0	0	1	1	0	0
703 F	49	13/05/2020	3438	1268	0	0	07/07/2020	2180	1638	0	0	0	0	0	0	0	0	0	0	0	0	0	0	0	0
704 F	50	13/05/2020	197859	211881	99	1	17/07/2020	141473	153822	21	1	01/04/2020	1	1	1	1	1	1	0	0	0	1	1	1	08/04/2020
705 F	44	13/05/2020	3693	571	0	0	16/07/2020	4156	613	0	0	1	10/03/2020	0	1	0	0	1	1	1	0	0	1	1	0
706 F	29	13/05/2020	3176	901	0	0	16/07/2020	2760	1116	0	0	1	24/03/2020	0	1	0	0	0	0	0	0	0	1	0	24/03/2020
707 F	27	13/05/2020	2015	1881	0	0	08/07/2020	2035	1483	0	0	0	0	0	0	0	0	0	0	0	0	0	1	0	0
708 F	22	13/05/2020	1313	943	0	0	16/07/2020	1741	1129	0	0	0	1	22/03/2020	0	1	1	1	0	0	0	0	1	0	0
709 F	60	13/05/2020	4478	2614	0	0	16/07/2020	1549	2881	0	0	1	27/02/2020	0	1	0	0	0	0	0	0	0	0	1	0
710 M	73	13/05/2020	4059	921	0	0	06/07/2020	4271	808	0	0	0	0	0	0	0	0	0	0	0	0	0	0	0	0
711 F	61	14/05/2020	7485	3931	0	0	#N/A	#N/A	#N/A	#N/A	#N/A	#N/A	1	20/03/2020	0	1	0	0	0	0	0	0	1	0	0
712 F	57	14/05/2020	564	509	0	0	15/07/2020	1070	631	0	0	1	0	0	0	0	0	0	0	0	0	0	0	0	0
713 M	55	14/05/2020	1904	814	0	0	25/08/2020	1224	836																

1019 F	29	20/05/2020	5197	1888	0	0	29/07/2020	169	128	0	0	1	31/03/2020	1	1	1	1	1	1	0	1	0	1	1	1	31/03/2020	0	
1020 M	39	20/05/2020	1091	486	0	0	22/07/2020	468	726	0	0	0	0	0	0	0	0	0	0	0	0	0	0	0	0	0	0	
1021 M	62	20/05/2020	215250	170977	94	0	21/07/2020	154353	111074	81	1	17/03/2020	1	1	1	1	0	0	1	0	1	1	1	1	1	28/03/2020	1	
1022 F	31	20/05/2020	9213	1384	0	0	07/07/2020	4522	1135	0	0	0	0	0	0	0	0	0	0	0	0	0	0	0	0	0	0	
1023 F	0	20/05/2020	6749	2387	0	0	02/07/2020	2938	2771	0	0	1	18/03/2020	0	1	0	0	0	0	0	0	0	0	0	0	1	0	
1024 M	30	20/05/2020	76525	69513	88	0	26/08/2020	34178	72015	23	1	31/03/2020	0	1	1	1	1	1	0	0	1	1	1	1	0	0		
1025 H	53	20/05/2020	6302	1764	0	0	#N/A	#N/A	#N/A	#N/A	1	15/03/2020	0	0	0	0	0	0	0	0	0	0	0	0	0	0		
1026 F	30	20/05/2020	3679	422	0	0	23/07/2020	845	498	0	0	0	0	0	0	0	0	0	0	0	0	0	0	0	0	0	0	
1027 M	59	20/05/2020	3970	3112	0	0	#N/A	#N/A	#N/A	#N/A	#N/A	0	0	0	0	0	0	0	0	0	0	0	0	0	0	0	0	
1028 M	49	20/05/2020	1858	478	0	0	08/07/2020	2229	703	0	0	0	0	0	0	0	0	0	0	0	0	0	0	0	0	0	0	
1029 F	49	20/05/2020	4094	820	0	0	02/07/2020	1996	1006	0	0	0	0	0	0	0	0	0	0	0	0	0	0	0	0	0	0	
1030 F	59	20/05/2020	6357	2116	0	0	28/07/2020	2201	984	0	0	1	29/01/2020	0	0	0	0	0	0	0	0	0	0	0	0	0	0	
1031 F	34	20/05/2020	5687	1254	0	0	23/07/2020	4478	618	0	0	1	15/03/2020	0	0	0	1	0	0	0	0	0	0	0	1	0	0	
1032 F	45	20/05/2020	7382	2343	0	0	20/06/2020	4548	3708	0	0	1	14/03/2020	1	1	0	1	0	1	0	0	0	0	0	1	0	0	
1033 F	47	20/05/2020	237	828	0	0	05/08/2020	543	580	0	0	0	0	0	0	0	0	0	0	0	0	0	0	0	0	0	0	
1034 M	45	20/05/2020	3445	3447	0	0	#N/A	#N/A	#N/A	#N/A	#N/A	0	0	0	0	0	0	0	0	0	0	0	0	0	0	0	0	
1035 F	23	20/05/2020	4561	2171	0	0	#N/A	#N/A	#N/A	#N/A	#N/A	1	0	0	0	0	0	0	0	0	0	0	0	0	0	0	0	
1036 F	52	20/05/2020	5416	752	0	0	25/08/2020	2872	612	0	0	0	0	0	0	0	0	0	0	0	0	0	0	0	0	0	0	
1037 F	21	20/05/2020	1844	626	0	0	22/07/2020	1763	911	0	0	0	0	0	0	0	0	0	0	0	0	0	0	0	0	0	0	
1038 F	22	20/05/2020	9083	1290	0	0	22/07/2020	630	276	0	0	0	0	0	0	0	0	0	0	0	0	0	0	0	0	0	0	
1039 F	37	20/05/2020	1508	2410	0	0	#N/A	#N/A	#N/A	#N/A	#N/A	0	0	0	0	0	0	0	0	0	0	0	0	0	0	0	0	
1040 F	31	20/05/2020	1349	751	0	0	#N/A	#N/A	#N/A	#N/A	#N/A	0	0	0	0	0	0	0	0	0	0	0	0	0	0	0	0	
1041 F	32	20/05/2020	7743	672	0	0	03/07/2020	5572	2115	0	0	1	5/72	0	1	0	0	0	0	0	0	0	0	0	1	0	0	
1042 F	55	20/05/2020	2982	436	0	0	04/08/2020	1356	1744	0	0	0	0	0	0	0	0	0	0	0	0	0	0	0	0	0	0	
1043 F	59	20/05/2020	3437	1480	0	0	23/07/2020	1746	615	0	0	0	0	0	0	0	0	0	0	0	0	0	0	0	0	0	0	
1044 F	35	20/05/2020	4512	1975	0	0	23/07/2020	1423	1677	0	0	0	0	0	0	0	0	0	0	0	0	0	0	0	0	0	0	
1045 F	23	20/05/2020	1021	1195	0	0	#N/A	#N/A	#N/A	#N/A	#N/A	1	0	0	0	0	0	0	0	0	0	0	0	0	0	0	0	
1046 F	30	20/05/2020	5863	2765	0	0	24/07/2020	3218	1698	0	0	1	19/05/2020	0	0	0	0	0	0	0	1	1	0	0	0	0	0	
1047 F	44	20/05/2020	7864	2959	0	0	#N/A	#N/A	#N/A	#N/A	#N/A	1	0	0	0	0	0	0	0	0	0	0	0	0	0	0	0	
1048 F	31	20/05/2020	4667	6572	0	0	#N/A	#N/A	#N/A	#N/A	#N/A	0	0	0	0	0	0	0	0	0	0	0	0	0	0	0	0	
1049 F	30	20/05/2020	7932	5027	0	0	30/07/2020	3009	610	0	0	0	0	0	0	0	0	0	0	0	0	0	0	0	0	0	0	
1050 F	32	20/05/2020	181	737	0	0	20/07/2020	771	669	0	0	1	14/03/2020	0	1	0	0	0	0	0	0	0	0	0	0	0	0	
1051 F	52	20/05/2020	1235	1550	0	0	05/08/2020	1463	7028	0	0	0	0	0	0	0	0	0	0	0	0	0	0	0	0	0	0	
1052 F	47	20/05/2020	4506	35828	58	0	20/07/2020	2651	27251	0	1	11/02/2020	1	1	0	0	0	1	0	0	0	1	0	0	1	0	0	
1053 F	31	20/05/2020	1256	4768	0	0	29/07/2020	1617	6178	0	0	0	0	0	0	0	0	0	0	0	0	0	0	0	0	0	0	
1054 M	49	20/05/2020	2291	2906	0	0	#N/A	#N/A	#N/A	#N/A	#N/A	0	0	0	0	0	0	0	0	0	0	0	0	0	0	0	0	
1055 F	36	20/05/2020	107230	129251	95	1	24/07/2020	56768	213306	54	1	20/03/2020	1	1	0	1	1	1	0	1	0	1	0	1	0	1	22/03/2020	1
1056 F	61	20/05/2020	727	562	0	0	17/08/2020	709	899	0	0	0	0	0	0	0	0	0	0	0	0	0	0	0	0	0	0	
1057 M	55	22/05/2020	1675	868	0	0	26/08/2020	1500	383	0	0	0	0	0	0	0	0	0	0	0	0	0	0	0	0	0	0	
1058 F	30	22/05/2020	945	1128	0	0	11/08/2020	506	488	0	0	1	05/03/2020	0	0	0	0	0	0	0	0	0	0	0	0	0	0	0
1059 F	41	22/05/2020	4998	2228	0	0	22/07/2020	4039	1390	0	0	1	16/03/2020	0	0	0	0	0	0	0	0	0	0	0	0	0	0	0
1060 F	56	22/05/2020	1763	1109	0	0	21/07/2020	1376	1199	0	0	1	03/02/2020	0	1	1	0	0	0	0	0	0	0	0	0	0	0	0
1061 F	28	22/05/2020	1753	1994	0	0	09/07/2020	1382	834	0	0	0	0	0	0	0	0	0	0	0	0	0	0	0	0	0	0	
1062 M	56	22/05/2020	7085	1070	0	0	15/07/2020	9317	620	0	0	0	0	0	0	0	0	0	0	0	0	0	0	0	0	0	0	
1063 F	23	22/05/2020	616	1273	0	0	12/08/2020	716	1161	0	0	0	0	0	0	0	0	0	0	0	0	0	0	0	0	0	0	
1064 F	22	22/05/2020	239	930	0	0	22/07/2020	598	520	0	0	0	0	0	0	0	0	0	0	0	0	0	0	0	0	0	0	
1065 F	33	22/05/2020	1176	1862	0	0	23/07/2020	879	1381	0	0	0	0	0	0	0	0	0	0	0	0	0	0	0	0	0	0	
1066 F	49	22/05/2020	263	1556	0	0	08/07/2020	904	642	0	0	0	0	0	0	0	0	0	0	0	0	0	0	0	0	0	0	
1067 F	49	22/05/2020	5560	983	0	0	27/07/2020	4490	1325	0	0	1	26/01/2020	1	1	0	1	0	0	0	0	0	0	0	1	0	0	
1068 F	24	22/05/2020	3892	2098	0	0	23/07/2020	1892	591	0	0	0	0	0	0	0	0	0	0	0	0	0	0	0	0	0	0	
1069 M	32	22/05/2020	1201	1893	0	0	04/08/2020	1343	735	0	0	0	0	0	0	0	0	0	0	0	0	0	0	0	0	0	0	
1070 F	37	22/05/2020	2811	2855	0	0	04/08/2020	2172	1687	0	0	0	0	0	0	0	0	0	0	0	0	0	0	0	0	0	0	
1071 F	34	22/05/2020	4945	973	0	0	#N/A	#N/A	#N/A	#N/A	#N/A	1	02/01/2020	1	1	1	1	0	1	0	1	0	1	0	0	0	0	
1072 F	39	22/05/2020	993	1443	0	0	30/07/2020	986	2804	0	0	0	0	0	0	0	0	0	0	0	0	0	0	0	0	0	0	
1073 F	47	22/05/2020	1132	1283	0	0	18/08/2020	789	375	0	0	0	0	0	0	0	0	0	0	0	0	0	0	0	0	0	0	
1074 F	57	22/05/2020	2385	1478	0	0	20/07/2020	3099	1197	0	0	0	0	0	0	0	0	0	0	0	0	0	0	0	0	0	0	
1075 F	50	22/05/2020	6313	1594	0	0	20/07/2020	1019	1624	0	0	0	0	0	0	0	0	0	0	0	0	0	0	0	0	0	0	
1076 F	25	22/05/2020	1722	842	0	0	21/07/2020	1139	1391	0	0	0	0	0	0	0	0	0	0	0	0	0	0	0	0	0	0	
1077 F	23	22/05/2020	5696	1084	0	0	20/07/2020	2906	2217	0	0	1	31/12/2019	0	0	0	0	0	0	0	0	0	0	0	1	0	0	
1078 F	55																											

1111 F	47	26/05/2020	2252	848	0	0	01/09/2020	1549	286	0	#N/A	0	1	16/03/2020	1	1	0	1	1	1	0	0	0	1	1	0	
1112 F	48	26/05/2020	803	1176	0	0	#N/A	#N/A	#N/A	#N/A	#N/A	1	1	16/05/2020	0	0	0	0	0	0	0	0	0	0	0	1	0
1113 h	24	26/05/2020	15802	1103	0	1	23/07/2020	16603	1713	0	#N/A	1	0	0	0	0	0	0	0	0	0	0	0	0	0	0	
1114 H	70	18/05/2020	1423	769	0	0	#N/A	#N/A	#N/A	#N/A	#N/A	0	0	0	0	0	0	0	0	0	0	0	0	0	0	0	
1115 F	26	26/05/2020	1207	1154	0	0	21/07/2020	1637	1071	0	#N/A	0	0	0	0	0	0	0	0	0	0	0	0	0	0	0	
1116 F	31	26/05/2020	1188	1025	0	0	#N/A	#N/A	#N/A	#N/A	#N/A	0	0	0	0	0	0	0	0	0	0	0	0	0	0	0	
1117 F	34	26/05/2020	2910	856	0	0	22/07/2020	1002	817	0	#N/A	0	0	0	0	0	0	0	0	0	0	0	0	0	0	0	
1118 F	33	26/05/2020	2067	1125	0	0	07/07/2020	3207	789	0	#N/A	0	0	0	0	0	0	0	0	0	0	0	0	0	0	0	
1119 H	48	26/05/2020	1124	1480	0	0	#N/A	#N/A	#N/A	#N/A	#N/A	0	0	0	0	0	0	0	0	0	0	0	0	0	0	0	
1120 F	48	26/05/2020	1302	947	0	0	05/08/2020	492	260	0	#N/A	0	1	0	0	0	0	0	0	0	0	0	0	1	0	0	
1121 F	40	26/05/2020	93460	48277	7	1	#N/A	#N/A	#N/A	#N/A	#N/A	1	1	21/03/2020	1	1	1	1	1	1	1	1	1	1	1	1	
1122 F	55	26/05/2020	62893	55987	79	1	26/08/2020	33821	67334	97	#N/A	1	1	31/03/2020	0	0	0	0	0	0	0	0	0	0	0	0	
1123 F	59	26/05/2020	976	545	0	0	20/07/2020	837	892	0	#N/A	0	1	0	0	0	1	0	0	0	0	0	0	0	0	0	
1124 F	39	27/05/2020	2392	625	0	0	#N/A	#N/A	#N/A	#N/A	#N/A	0	0	0	0	0	1	0	0	0	0	0	0	0	0	0	
1125 H	57	27/05/2020	1405	432	0	0	#N/A	#N/A	#N/A	#N/A	#N/A	0	0	0	0	0	0	0	0	0	0	0	0	0	0	0	
1126 F	47	27/05/2020	2859	548	0	0	23/07/2020	2631	424	0	#N/A	0	0	0	0	0	0	0	0	0	0	0	0	0	0	0	
1127 F	38	27/05/2020	71662	133877	83	1	09/07/2020	30149	64832	52	#N/A	1	1	24/03/2020	0	1	1	1	1	1	1	1	1	1	1	1	
1128 H	47	27/05/2020	618	386	0	0	#N/A	#N/A	#N/A	#N/A	#N/A	0	0	0	0	0	0	0	0	0	0	0	0	0	0	0	
1129 F	31	27/05/2020	878	1312	0	0	23/07/2020	803	915	0	#N/A	0	1	26/03/2020	1	1	1	1	1	1	1	1	1	1	1	1	
1130 F	50	27/05/2020	764	1963	0	0	02/09/2020	888	1246	0	#N/A	0	1	14/03/2020	0	0	0	0	0	0	0	0	0	0	0	0	
1132 F	29	26/05/2020	778	752	0	0	20/07/2020	1042	731	0	#N/A	0	1	13/03/2020	0	1	1	0	0	0	0	0	0	1	0	0	
1133 F	57	26/05/2020	5516	1271	0	0	31/07/2020	6674	1865	0	#N/A	0	0	0	0	0	0	0	0	0	0	0	0	0	0	0	
1134 F	57	27/05/2020	1570	1026	0	0	#N/A	#N/A	#N/A	#N/A	#N/A	0	0	0	0	0	0	0	0	0	0	0	0	0	0	0	
1135 F	29	27/05/2020	117143	129367	89	1	14/08/2020	63169	173366	16	#N/A	1	1	13/03/2020	1	1	1	1	1	1	1	1	1	1	1	1	
1136 F	40	27/05/2020	1043	706	0	0	#N/A	#N/A	#N/A	#N/A	#N/A	0	1	16/03/2020	1	1	0	0	0	0	0	0	0	0	0	0	
1137 F	28	27/05/2020	685	489	0	0	16/07/2020	1306	836	0	#N/A	0	0	0	0	0	0	0	0	0	0	0	0	0	0	0	
1138 M	26	27/05/2020	21830	30085	92	1	16/07/2020	11668	18074	24	#N/A	1	1	24/03/2020	1	1	1	1	1	1	1	1	1	1	1	1	
1139 M	39	27/05/2020	5887	978	0	0	04/08/2020	2645	743	0	#N/A	0	1	23/03/2020	0	0	0	0	0	0	0	0	0	0	0	0	
1140 F	37	27/05/2020	755	447	0	0	16/07/2020	1587	674	0	#N/A	0	0	0	0	0	0	0	0	0	0	0	0	0	0	0	
1141 F	57	27/05/2020	1232	1478	0	0	16/07/2020	1533	997	0	#N/A	0	0	0	0	0	0	0	0	0	0	0	0	0	0	0	
1142 M	27	27/05/2020	1241	846	0	0	28/09/2020	#N/A	#N/A	#N/A	#N/A	1	1	01/04/2020	0	1	0	0	0	0	0	0	0	0	0	0	0
1143 M	35	27/05/2020	1502	713	0	0	28/09/2020	711	1079	0	#N/A	0	0	0	0	0	0	0	0	0	0	0	0	0	0	0	
1144 M	41	27/05/2020	431	869	0	0	28/09/2020	510	782	0	#N/A	0	0	0	0	0	0	0	0	0	0	0	0	0	0	0	
1145 M	51	27/05/2020	819	1080	0	0	#N/A	#N/A	#N/A	#N/A	#N/A	0	1	20/11/2019	1	1	0	0	0	0	0	0	0	0	0	0	
1146 M	44	27/05/2020	1689	1389	0	0	16/07/2020	3073	1444	0	#N/A	0	1	07/04/2020	0	0	0	1	0	0	0	0	0	0	0	0	
1147 F	49	27/05/2020	3062	692	0	0	28/09/2020	913	791	0	#N/A	0	0	0	0	0	0	0	0	0	0	0	0	0	0	0	
1148 F	38	27/05/2020	984	528	0	0	16/07/2020	2128	1014	0	#N/A	0	1	16/03/2020	0	0	1	0	0	0	0	0	0	1	0	0	
1149 M	52	27/05/2020	1795	3465	0	0	16/07/2020	2924	2868	0	#N/A	0	1	03/03/2020	1	1	1	1	1	1	1	1	1	1	1	1	
1150 M	35	27/05/2020	841	746	0	0	16/07/2020	1601	1029	0	#N/A	0	0	0	0	0	0	0	0	0	0	0	0	0	0	0	
1151 F	33	27/05/2020	2275	728	0	0	16/07/2020	2257	926	0	#N/A	0	1	02/03/2020	0	1	0	0	0	0	0	0	0	0	0	0	
1152 F	39	27/05/2020	499	828	0	0	16/07/2020	1847	1876	0	#N/A	0	0	0	0	0	0	0	0	0	0	0	0	0	0	0	
1153 M	41	27/05/2020	1619	789	0	0	16/07/2020	1682	1451	0	#N/A	0	1	08/06/2020	0	0	0	0	0	0	0	0	0	0	0	0	
1154 F	40	27/05/2020	2574	590	0	0	16/07/2020	5544	1057	0	#N/A	0	0	0	0	0	0	0	0	0	0	0	0	0	0	0	
1155 F	26	27/05/2020	1463	617	0	0	16/07/2020	2565	879	0	#N/A	0	1	04/02/2020	1	1	0	1	1	0	0	0	0	1	0	0	
1156 F	59	27/05/2020	512	766	0	0	28/07/2020	299	252	0	#N/A	0	0	0	0	0	0	0	0	0	0	0	0	0	0	0	
1157 F	26	27/05/2020	2071	2446	0	0	16/07/2020	2589	2472	0	#N/A	0	0	0	0	0	0	0	0	0	0	0	0	0	0	0	
1158 F	27	27/05/2020	1963	1814	0	0	16/07/2020	2738	1344	0	#N/A	0	0	0	0	0	0	0	0	0	0	0	0	0	0	0	
1159 F	57	27/05/2020	6264	949	0	0	16/07/2020	4687	571	0	#N/A	0	0	0	0	0	0	0	0	0	0	0	0	0	0	0	
1160 F	53	27/05/2020	1462	2329	0	0	28/09/2020	3576	657	0	#N/A	0	0	0	0	0	0	0	0	0	0	0	0	0	0	0	
1161 F	54	27/05/2020 igM positive	3023	232	0	0	16/07/2020	4381	872	0	#N/A	0	1	20/01/2020	0	0	0	0	0	0	0	0	0	0	0	0	
1162 F	54	27/05/2020	8293	1037	0	0	16/07/2020	8613	1088	0	#N/A	0	0	0	0	0	0	0	0	0	0	0	0	0	0	0	
1163 M	55	27/05/2020	978	594	0	0	28/09/2020	1046	1471	0	#N/A	0	0	0	0	0	0	0	0	0	0	0	0	0	0	0	
1164 F	29	27/05/2020	505	616	0	0	16/07/2020	2079	882	0	#N/A	0	1	13/04/2020	0	0	0	0	0	0	0	0	0	0	0	0	
1165 F	52	27/05/2020	1021	1246	0	0	28/09/2020	1518	900	0	#N/A	0	0	0	0	0	0	0	0	0	0	0	0	0	0	0	
1166 F	31	27/05/2020	411	913	0	0	16/07/2020	1213	1745	0	#N/A	0	0	0	0	0	0	0	0	0	0	0	0	0	0	0	
1167 F	25	27/05/2020	892	430	0	0	#N/A	#N/A	#N/A	#N/A	#N/A	0	0	0	0	0	0	0	0	0	0	0	0	0	0	0	
1168 F	46	27/05/2020	504	723	0	0	28/09/2020	387	1079	0	#N/A	0	0	0	0	0	0	0	0	0	0	0	0	0	0	0	
1169 F	28	27/05/2020	1204	1218	0	0	16/07/2020	2000	1475	0	#N/A	0	1	01/02/2020	0	1	0	0	0	0	0	0	0	0	0	0	
1170 F	49	27/05/2020	5557	1075	0	0	28/09/2020	2018	977	0	#N/A	0	0	0	0	0	0	0	0	0	0	0	0	0	0	0	
1171 F	58	27/05/2020	879	1695	0	0	28/09/2020	908	1605	0	#N/A	0	1	24/01/2020	1	1	1	1	1	1	1	1	1	1	1	1	
1172 M	46	27/05/2020	679	471	0	0	16/07/2020	1581	500	0	#N/A	0	0	0													

1869 F	26	16/07/2020	2463	5442	0	0	#N/A	#N/A	#N/A	#N/A	#N/A	0	0	0	0	0	0	0	0	0	0	0	0	0	
1870 F	36	16/07/2020	1805	735	0	0	28/09/2020	1503	988	0	#N/A	0	0	0	0	0	0	0	0	0	0	0	0	0	
1871 M	46	17/07/2020	1552	3253	0	0	#N/A	#N/A	#N/A	#N/A	#N/A	0	0	0	0	0	0	0	0	0	0	0	0	0	
1872 F	53	21/07/2020	346	422	0	0	15/09/2020	216	535	0	#N/A	0	0	0	0	0	0	0	0	0	0	0	0	0	
1873 M	24	21/07/2020	4139	1111	0	0	15/09/2020	4933	708	0	#N/A	0	0	0	0	0	0	0	0	0	0	0	0	0	
1874 M	37	23/07/2020	540	605	0	0	#N/A	#N/A	#N/A	#N/A	#N/A	0	0	0	0	0	0	0	0	0	0	0	0	0	
1875 F	50	27/07/2020	63956	145562	40	1	15/09/2020	19125	187957	97	#N/A	1	0	0	0	0	0	0	0	0	0	0	0	1 28/04/2020	
1876 M	42	27/07/2020	1609	2048	0	0	#N/A	#N/A	#N/A	#N/A	#N/A	0	0	0	0	0	0	0	0	0	0	0	0	0	
1877 F	39	27/07/2020	5450	825	0	0	#N/A	#N/A	#N/A	#N/A	#N/A	0	0	0	0	0	0	0	0	0	0	0	0	0	
1878 F	30	27/07/2020	1806	577	0	0	#N/A	#N/A	#N/A	#N/A	#N/A	0	0	0	0	0	0	0	0	0	0	0	0	0	
1879 F	45	27/07/2020	1064	348	0	0	#N/A	#N/A	#N/A	#N/A	#N/A	0	0	0	0	0	0	0	0	0	0	0	0	0	
1880 M	49	30/07/2020	895	429	0	0	#N/A	#N/A	#N/A	#N/A	#N/A	0	0	0	0	0	0	0	0	0	0	0	0	0	
1881 M	25	30/07/2020	923	306	0	0	#N/A	#N/A	#N/A	#N/A	#N/A	0	0	0	0	0	0	0	0	0	0	0	0	0	
1882 M	59	30/07/2020	860	392	0	0	#N/A	#N/A	#N/A	#N/A	#N/A	0	0	0	0	0	0	0	0	0	0	0	0	0	
1883 F	40	30/07/2020	756	1102	0	0	#N/A	#N/A	#N/A	#N/A	#N/A	0	0	0	0	0	0	0	0	0	0	0	0	0	
1884 F	59	30/07/2020	1154	413	0	0	#N/A	#N/A	#N/A	#N/A	#N/A	0	0	0	0	0	0	0	0	0	0	0	0	0	
1885 F	34	30/07/2020	1195	1338	0	0	#N/A	#N/A	#N/A	#N/A	#N/A	1	0	1	0	0	0	0	0	0	0	0	1	0	0