

1 SARS-CoV-2 surveillance in untreated wastewater: first detection in a 2 low-resource community in Buenos Aires, Argentina.

3

4 Iglesias, Néstor Gabriel^{1,2,3,*}; Gebhard, Leopoldo Germán^{1,2}; Carballeda, Juan Manuel^{1,2};
5 Aiello, Ignacio^{1,2}; Recalde, Emiliano⁴; Terny, Gabriel⁴; Ambrosolio, Silvina³; L'Arco,
6 Gabriela⁵; Konfino, Jonatan⁵ and Brardinelli, Juan Ignacio³.

7 ¹ Laboratorio de Virus Emergentes, Departamento de Ciencia y Tecnología, Universidad
8 Nacional de Quilmes, Buenos Aires, Argentina.

9 ² Consejo Nacional de Investigaciones Científicas y Técnicas de Argentina (CONICET).

10 ³ Organismo Provincial para el Desarrollo Sostenible (OPDS), Buenos Aires, Argentina.

11 ⁴ Organismo Provincial de Integración Social y Urbana (OPISU) Buenos Aires, Argentina.

12 ⁵ Secretaría de Salud, Municipalidad de Quilmes, Buenos Aires, Argentina.

13

14 *Corresponding autor.

15 Abstract

16 Recently, the World Health Organization (WHO) in a brief report about the status of
17 environmental surveillance for SARS-CoV-2 indicated that *approaches are needed that can be*
18 *applied in lower-resource settings, where a greater proportion of the population is not*
19 *connected to sewers and instead uses pit toilets or septic tanks. Possibilities include testing*
20 *surface water contaminated by sewage.* In this study we measured SARS-CoV-2 RNA from a
21 surface water source in a low-income settlement. We observe for this community that
22 measurements of SARS-CoV-2 concentrations in surface water contaminated by sewage can be
23 considered as an estimation of changes in COVID-19 prevalence on a population level.

24

25 Introduction

26 Wastewater-based epidemiology (WBE) provides comprehensive health information at the
27 community level [1]. The concept is mainly based on the detection and analysis of chemical
28 and biological compounds in sewage. WBE is an approach used to monitor the presence of
29 pathogens which may pose a public health concern [2]. During the current COVID-19
30 pandemic, sewage surveillance by analyzing for SARS-CoV-2 RNA traces in wastewater has
31 been reported in many locations around the world. All these reports have been conducted in
32 populations which have sewer networks and wastewater treatment facilities [3-6]. However,
33 no study has been reported with this approach in low-resource settlements lacking these
34 facilities.

NOTE: This preprint reports new research that has not been certified by peer review and should not be used to guide clinical practice.

35 On January 10th 2020 the World Health Organization (WHO) published a comprehensive
36 package of guidance documents for countries, covering topics related to the management of
37 an outbreak of a new disease, including recommendations about surveillance [7]. On March
38 11th, the WHO declared COVID-19 as a pandemic [8], and on March 18th, the first case was
39 confirmed in the Municipality of Quilmes, Province of Buenos Aires, Argentina and the
40 prevention and control strategy of COVID-19 began to be implemented [9]. On May 25th a
41 COVID-19 outbreak in the Villa Azul neighborhood of Quilmes was confirmed and an outbreak
42 mitigation strategy was implemented in addition to a comprehensive surveillance strategy that
43 also was extended to Villa Itatí community given the geographical and social proximity [10].

44 In this scenario, a surveillance strategy was developed in Villa Itatí including an active search of
45 eventual new cases (suspected cases) house by house, the registry of new COVID-19 cases [10]
46 and wastewater surveillance. Every suspected case under the current epidemiological
47 guidelines was tested with a nasal and oral swab for real time PCR analysis. Once the case was
48 confirmed, isolation measures were recommended for the recovery and avoidance as much as
49 possible more contagiousness and more cases [10].

50 The aim of this study was to analyze the presence of SARS-CoV-2 RNA in surface waters
51 contaminated with wastewater from a low-income settlement and to analyze its relationship
52 with the prevalence of COVID-19 disease at the population level as part of the surveillance
53 strategy.

54 **Material and methods**

55 Raw surface water samples were collected between June 5th and September 7th at Villa Itatí
56 neighborhood, Municipality of Quilmes, Buenos Aires, Argentina. It is estimated that Villa Itatí
57 has a population of 16,478 people, in an area of 55 hectares delimited by Montevideo, Levalle,
58 Ayacucho and Southeast access streets [11]. It is a neighborhood that has an average of 1.03
59 households per dwelling with on average 3.55 people [12]. Of the 4,261 homes in Villa Itatí,
60 3,966 (93.1%) have potable water from the network and 1,044 (24.5%) are connected to the
61 public sewer network [12].

62 This community is characterized by being located around an endorheic urban basin formed by
63 an anthropogenic digging flooded by the groundwater table and the discharges of pluvial and
64 domestic waters [13]. Most households serve their sewage into the waterlogged digging
65 (lagoon) through open drains or indirectly by underground infiltration from pit toilets and

66 cesspools. In order to avoid the overflowing of the lagoon, its content is daily discharged to the
67 urban rainwater network through a pumping system [13]. Water samples were taken from the
68 unique pumping station of the neighborhood.

69 Composite samples representing 6-hour period (from 8 a.m. to 2 p.m.) were collected in
70 sterilized 500 ml glass bottles and kept at 4 °C until analysis, the RNA purification and viral
71 detection were performed the same day as the sample was collected. Before processing,
72 samples were subjected to a 90 minutes treatment at 60 °C to ensure biological safety. Viral
73 concentration was carried out from 250 ml of sample adding 20 grams of PEG₈₀₀₀ and 4.5
74 grams of NaCl and then centrifuging at 12.000 g during 1 hour at 4°C. The pellet was
75 suspended in 1 ml of Trizol (Invitrogen) and RNA was purified according to the supplier's
76 protocol. The extracted RNA was further purified using QiAamp Viral RNA Mini Kit from
77 QIAGEN and eluted in 50 ul of ribonuclease-free water. SARS-CoV-2 RNA was quantified by RT-
78 qPCR using the CDC N1 and N2 probe/primers sets obtained from Integrated DNA
79 Technologies Inc. An RT-qPCR assay targeting pepper mild mottle virus (PMMoV) was
80 performed as viral indicator of human fecal contents [4, 14]. Samples were analyzed using
81 GoTaq Probe 1-Step RT-qPCR System (Promega) in 20 ul reaction mix in a QuantStudio 3 Real-
82 Time PCR System (Applied Biosystems). In our conditions, we obtained a standard curve for N1
83 primer set with an R² of 0.99 with efficiency of 85% (slope=-3.747; y intercept = 46.076). The
84 N2 primer set generated a standard curve with an R² of 0.98 with an efficiency of 92.3%
85 (slope=-3.508; y intercept=42.014). All determinations were made at least in duplicate.

86 **Results**

87 We collected raw water samples eleven times from June to September at Villa Itatí pumping
88 station. Sampling was performed weekly with some exceptions mainly due to impediments
89 caused by heavy rains.

90 We optimized an RNA isolation procedure consisting in a PEG₈₀₀₀ based precipitation step in
91 order to achieve viral concentration from the raw water samples. Then, a Trizol (chaotropic
92 agents/organic solvents) extraction followed by a silica-gel based RNA purification step were
93 carried out in order to recover the viral RNA free from interfering substances.

94 Real time RT-qPCR was performed using the same CDC N1 and N2 probe/primers sets which
95 are utilized for COVID-19 diagnostic [15]. We detected SARS-CoV-2 RNA in all the samples, and
96 also, we were able to quantify the relative SARS-CoV-2 RNA concentration in these samples

97 using both N1 and N2 sets. The RT-qPCR cycle threshold values (Ct) ranged from 32 to 40 with
98 means of 35,4 and 34,4 for N1 and N2, respectively. The comparison of the relative RNA
99 concentrations obtained by the N1 and N2 sets is shown in Figure 3. The correlation exhibited
100 a R^2 of 0.84 (Figure 3). In all samples we also determined the relative amount of PMMoV RNA
101 as a viral indicator of human feces content, obtaining Ct values ranged from 30 to 33 with an
102 means of 31,9.

103 In order to determine the number of active COVID-19 cases in the Villa Itatí population for
104 each date, we assumed an active case beginning from the date of positive diagnosis for COVID-
105 19 until the next 15 days, since it is the median period of persistent viral shedding of SARS-
106 CoV-2 in feces and urine [16, 17]. We obtained a curve of active cases for this population based
107 on data provided by the Secretary of Health from the Municipality of Quilmes. We observed an
108 increase in the number of cases from May 28th until reaching a plateau on June 13th that
109 remained stable until July 1st and then began to decline until July 16th when a new increase
110 began until reaching the maximum number of cases on August 11th when the cases began to
111 decline until the end of the date of this work on September 24th.

112 The presence of SARS-CoV-2 genetic material was detected at the time when the reported
113 cases in the neighborhood were 122 over 16.478 inhabitants in June 5 (Figure 4), indicating
114 that a sensitivity of less than 1 reported case per 135 inhabitants could be achieved in this
115 particular setting.

116 The results are summarized in Figure 4 as the mean of the relative RNA concentration for N1
117 and N2 probe/primers sets. We detected that the change in the SARS-CoV-2 RNA
118 concentration in the water samples obtained for both N1 and N2 matched the trend observed
119 for the number of COVID-19 active cases along time. In other words, the relative SARS-CoV-2
120 RNA concentration determined in environmental samples traced the shape of infections during
121 the analyzed period.

122 We observed a good correlation between the concentration of viral RNA found in the
123 wastewater samples and the number of active cases reported by the health system. We were
124 able to corroborate that as the positive cases increased in the settlement, a higher
125 concentration of viral RNA in the sewage was observed, while when the positive cases
126 decreased after the outbreak mitigation process was implemented and social distancing
127 measures addressed, lower concentrations of viral RNA were detected in the wastewater
128 samples.

129 Discussion

130 Most studies published to date on the use of environmental surveillance for SARS-CoV-2 have
131 been from high income settings [18]. This is the first report of SARS-CoV-2 RNA detection from
132 a surface water source of a marginalized population with a precarious wastewater drainage.
133 Additionally, to our knowledge, it is the first experience of utilizing SARS-CoV-2 RNA
134 measurement in wastewater as environmental surveillance strategy for the COVID-19
135 pandemic in Argentina.

136 Nevertheless, we need to acknowledge some limitation. The strategy has some restrictions
137 due to the aforementioned characteristics regarding the neighborhood infrastructure and the
138 sampling; the hydraulic retention time has to be determined and sampling more frequently
139 may reduce the variance and noise in the data. There are also uncertainties due to limited
140 knowledge about SARS-CoV-2 gastrointestinal infection, the concentration of viral RNA in stool
141 over the course of the illness, the variability in viral dynamics in individuals and fecal shedding
142 [16, 17, 19, 20, 21]. Because of this, the number of cases cannot be estimated with confidence
143 directly from the quantification of viral RNA in wastewater [19]. However, we were able to
144 detect the presence of SARS-CoV-2 genetic material and follow the dynamics of the infection in
145 the community. We believe that the methodology could be improved by increasing the
146 sampling frequency and time of sampling. Although this methodology has its limitations,
147 lengthwise trends of SARS-CoV-2 RNA concentration in fecal contaminated surface water may
148 still be useful in supplementing conventional surveillance methods to interpret the trends in
149 community transmission.

150 A more comprehensive COVID-19 surveillance system could be developed if wastewater SARS-
151 CoV-2 frequent measurement is included, taking into account the disposal, fate, and transport
152 of wastewater in each community. Sewage testing has been successfully used as a method for
153 early detection of other pathogens, such as Poliovirus [22]. Since SARS-CoV-2 can be shed in
154 the feces of individuals with symptomatic or asymptomatic infection wastewater surveillance
155 can capture data on both types of infection [16, 20, 21]; it can be a leading indicator of
156 changes in COVID-19 burden in a community; and could serve as a COVID-19 indicator that is
157 independent of healthcare-seeking behaviors and access to clinical testing [19].

158 Overall, our results demonstrate for this community that measurements of SARS-CoV-2 RNA
159 levels in surface water contaminated by sewage can be considered as a reliable estimation of
160 changes in COVID-19 prevalence on a population level. This method may be applied to detect

161 outbreaks or an increase in the number of infected cases and is a useful complement to classic
162 epidemiological surveillance to assess whether the measures applied are effectively working.

163

164 **Funding:** Programa de articulación y fortalecimiento federal de las capacidades en Ciencia y
165 Tecnología COVID-19, from the Ministry of Science, Technology and Innovation of Argentina.

166 **The authors declare no conflict of interests.**

167 **Acknowledgements:** We wish to thank the OPDS laboratory staff for the sampling task and
168 Carolina Vera from the Ministry of Science, Technology and Innovation of Argentina for her
169 support to the project.

170 **References**

- 171 [1] Sims N, Kasprzyk-Hordern B. Future perspectives of wastewater-based epidemiology:
172 Monitoring infectious disease spread and resistance to the community level. *Environ Int.* 2020;
173 139: 105689. doi:10.1016/j.envint.2020.105689
- 174 [2] Xagorarakis I, O'Brien E. Wastewater-Based Epidemiology for Early Detection of Viral
175 Outbreaks. *Water Quality*. 2019; 75-97. Published 2019 Mar 30. doi:10.1007/978-3-
176 030-17819-2_5
- 177 [3] Ahmed W, Angel N, Edson J, et al. First confirmed detection of SARS-CoV-2 in untreated
178 wastewater in Australia: A proof of concept for the wastewater surveillance of COVID-19 in the
179 community. *Sci Total Environ.* 2020; 728: 138764. doi:10.1016/j.scitotenv.2020.138764
- 180 [4] Wu F, Zhang J, Xiao A, et al. SARS-CoV-2 Titers in Wastewater Are Higher than Expected
181 from Clinically Confirmed Cases. *mSystems.* 2020;5(4): e00614-20. Published 2020 Jul 21.
182 doi:10.1128/mSystems.00614-20
- 183 [5] Medema G, Heijnen L, Elsinga G, Italiaander R, Brouwer A. Presence of SARS-Coronavirus-2
184 RNA in Sewage and Correlation with Reported COVID-19 Prevalence in the Early Stage of the
185 Epidemic in The Netherlands. *Environ Sci Technol Lett.* 2020; acs.estlett.0c00357. Published
186 2020 May 20. doi:10.1021/acs.estlett.0c00357
- 187 [6] Peccia J, Zulli A, Brackney DE, Grubaugh ND, Kaplan EH, Casanovas-Massana A, et al. SARS-
188 CoV-2 RNA concentrations in primary municipal sewage sludge as a leading indicator of COVID-
189 19 outbreak dynamics. *medRxiv.* 2020:2020.05.19.20105999. [not peer-reviewed]
- 190 [7] World Health Organization. (2020, September 9). Timeline: WHO's COVID-19 response.
191 Retrieved from [https://www.who.int/emergencies/diseases/novel-coronavirus-](https://www.who.int/emergencies/diseases/novel-coronavirus-2019/interactive-timeline#)
192 [2019/interactive-timeline#](https://www.who.int/emergencies/diseases/novel-coronavirus-2019/interactive-timeline#)
- 193 [8] Pan American Health Organization. (2020, March 12). La OMS caracteriza a COVID-19 como
194 una pandemia. Retrieved from [https://](https://www.paho.org/arg/index.php?option=com_content&view=article&id=10436:la-oms-caracteriza-a-covid-19-como-una-pandemia&Itemid=226)
195 [www.paho.org/arg/index.php?option=com_content&view=article&id=10436:la-oms-](https://www.paho.org/arg/index.php?option=com_content&view=article&id=10436:la-oms-caracteriza-a-covid-19-como-una-pandemia&Itemid=226)
196 [caracteriza-a-covid-19-como-una-pandemia&Itemid=226](https://www.paho.org/arg/index.php?option=com_content&view=article&id=10436:la-oms-caracteriza-a-covid-19-como-una-pandemia&Itemid=226)
- 197 [9] Municipio de Quilmes. Acciones del Municipio de Quilmes COVID-19. Quilmes Gobierno;
198 2020
- 199 [10] Bustos, S. et al. 2020. Community approach for the COVID19 pandemic in Quilmes: a case
200 study of Villa Itati. <https://preprints.scielo.org/index.php/scielo/preprint/view/1294> [not peer-
201 reviewed]
- 202 [11] Organismo Provincial de Integración Social y Urbana, Gobierno de la Provincia de Buenos
203 Aires. Proyecto de Transformación Urbana del Área Metropolitana de Buenos Aires (AMBA)
204 "Mejora del Hábitat en Barrios Vulnerables del GBA" Financiamiento Adicional/Fase II".
205 Proyecto de Integración Social y Urbana Villa Itatí y Villa Azul EVALUACIÓN SOCIAL 2019.

- 206 [12] Gobierno de la Provincia de Buenos Aires. (2019). Informe Censo Villa Itati - Villa Azul
207 2018. Retrieved from: <http://www.estadistica.ec.gba.gov.ar/dpe/index.php/censos>
- 208 [13] Angheben, Enrique (2012). Estudio ecohidrológico de la cuenca urbana de La Cava de Villa
209 Itatí, Quilmes, provincia de Buenos Aires [Magister's thesis, Universidad Nacional de La Plata]
210 <http://sedici.unlp.edu.ar/handle/10915/25864>
- 211 [14] Rosario K, Symonds EM, Sinigalliano C, Stewart J, Breitbart M. Pepper mild mottle virus as
212 an indicator of fecal pollution. *Appl Environ Microbiol.* 2009; 75(22): 7261-7267.
213 doi:10.1128/AEM.00410-09
- 214 [15] CDC. 2020. Coronavirus disease 2019 (COVID-19). Centers for Disease Control and
215 Prevention, Atlanta, GA. [https://www.cdc.gov/coronavirus/2019-ncov/lab/rt-pcr-panel-](https://www.cdc.gov/coronavirus/2019-ncov/lab/rt-pcr-panel-primer-probes.html)
216 [primer-probes.html](https://www.cdc.gov/coronavirus/2019-ncov/lab/rt-pcr-panel-primer-probes.html)
- 217 [16] Gupta S, Parker J, Smits S, Underwood J, Dolwani S. Persistent viral shedding of SARS-CoV-
218 2 in faeces - a rapid review. *Colorectal Dis.* 2020; 22(6): 611-620. doi:10.1111/codi.15138
- 219 [17] Jones DL, Baluja MQ, Graham DW, et al. Shedding of SARS-CoV-2 in feces and urine and its
220 potential role in person-to-person transmission and the environment-based spread of COVID-
221 19 [published online ahead of print, 2020 Jul 31]. *Sci Total Environ.* 2020; 749:141364.
222 doi:10.1016/j.scitotenv.2020.141364
- 223 [18] World Health Organization. (2020, September 9). Status of environmental surveillance for
224 SARS-CoV-2-virus. Retrieved from [https://www.who.int/news-](https://www.who.int/news-room/commentaries/detail/status-of-environmental-surveillance-for-sars-cov-2-virus)
225 [room/commentaries/detail/status-of-environmental-surveillance-for-sars-cov-2-virus.](https://www.who.int/news-room/commentaries/detail/status-of-environmental-surveillance-for-sars-cov-2-virus)
- 226 [19] Peccia J, Zulli A, Brackney D E, Grubaugh N D, Kaplan E H, Casanovas-Massana A, Ko AI,
227 Malik AA, Wang D, Wang M, Warren JL, Weinberger DM, Arnold W, Omer SB. Measurement of
228 SARS-CoV-2 RNA in wastewater tracks community infection dynamics. *Nat Biotechnol.* 2020.
229 doi: 10.1038/s41587-020-0684-z
- 230 [20] Wölfel, R., Corman, V.M., Guggemos, W. et al. Virological assessment of hospitalized
231 patients with COVID-2019. *Nature* 581, 465–469 (2020). [https://doi.org/10.1038/s41586-020-](https://doi.org/10.1038/s41586-020-2196-x)
232 [2196-x](https://doi.org/10.1038/s41586-020-2196-x)
- 233 [21] Cheung KS, Hung IFN, Chan PPY, et al. Gastrointestinal manifestations of SARS-CoV-2
234 infection and virus load in fecal samples from a Hong Kong cohort: Systematic review and
235 meta-analysis. *Gastroenterology.* 2020; 159(1): 81-95. doi:10.1053/j.gastro.2020.03.065
- 236 [22] Asghar H, Diop OM, Weldegebriel G, et al. Environmental surveillance for polioviruses in
237 the Global Polio Eradication Initiative. *J Infect Dis.* 2014; 210 Suppl 1: S294-S303.
238 doi:10.1093/infdis/jiu384
- 239

240 **Figure 1**



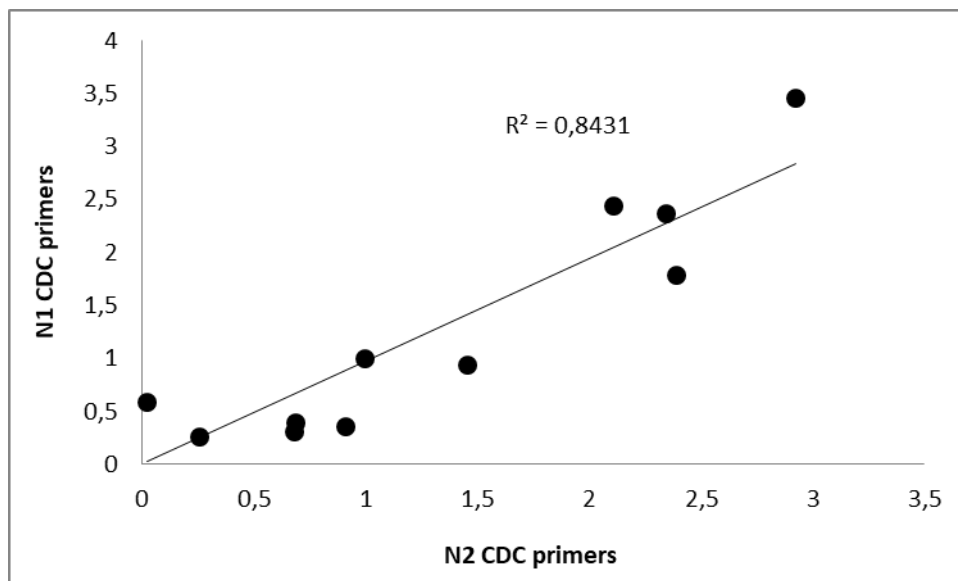
241

242 **Figure 2**



243

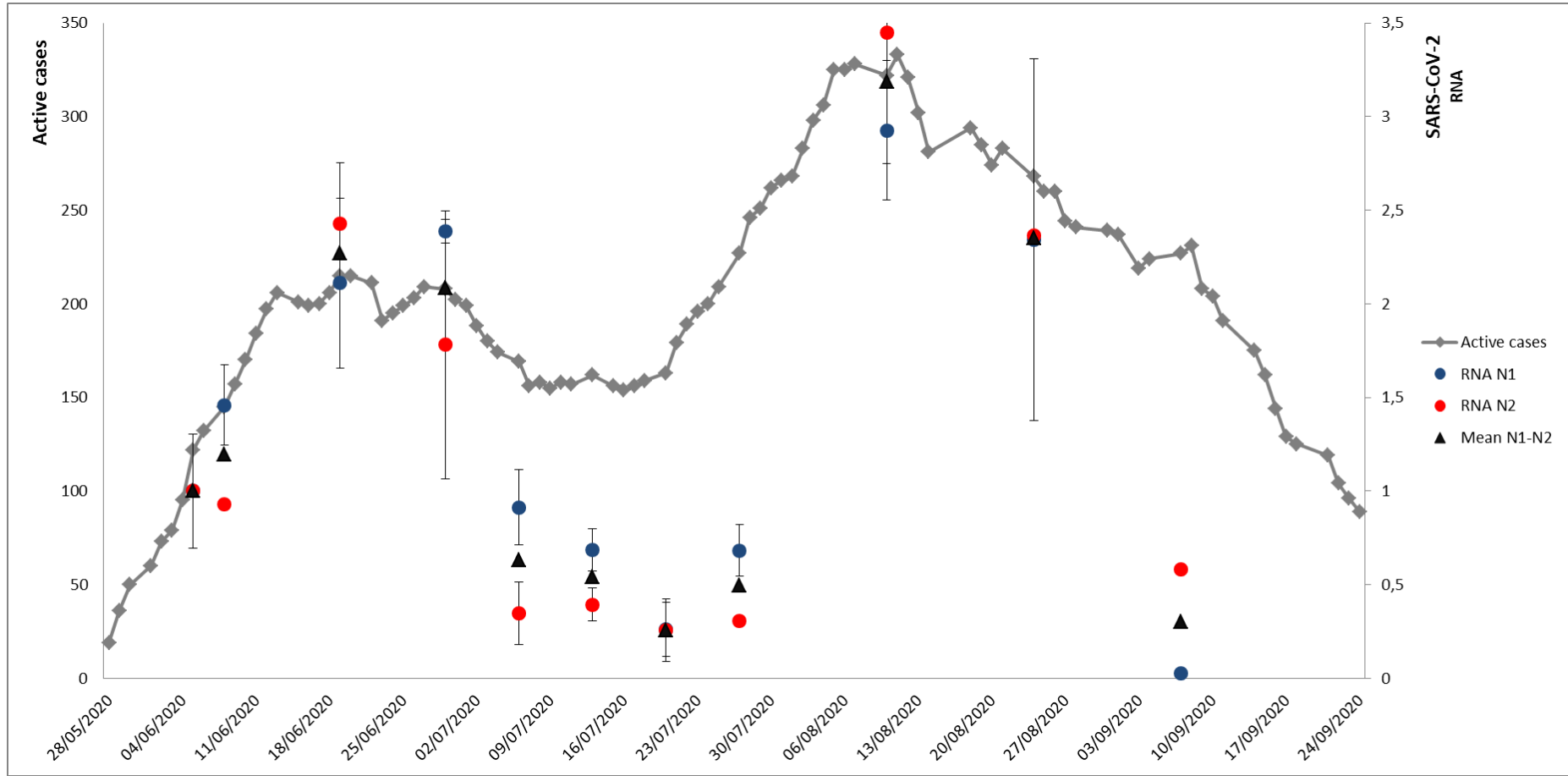
244 **Figure 3**



245

246

247 **Figure 4**



248

249 **Figure legends**

250 **Figure 1.** Aerial view of Villa Itatí neighborhood, Quilmes, Buenos Aires, Argentina with the
251 lagoon and the pumping station indicated (arrow). Source: Ariel Romaniuk, Municipality of
252 Quilmes.

253 **Figure 2.** An OPDS worker taking a water sample at Villa Itatí pumping station. Source: OPDS.

254 **Figure 3.** Comparison of SARS-CoV-2 relative RNA concentrations measured in surface water
255 samples using CDC N1 and N2 probe/primers sets.

256 **Figure 4.** Determinations of relative SARS-CoV-2 RNA concentration and active COVID-19 cases
257 per day. Diamonds (grey) indicates the number of active cases. The relative RNA of SARS-CoV-2
258 for each set of primers is indicated by circles (N1 in blue and N2 in red). The mean of relative
259 RNA concentration is represented with triangles. All measurements were made in duplicate,
260 error bars indicate the standard deviation.