

From multiplex serology to serolomics – a novel approach to the antibody response against the SARS-CoV-2 proteome

Authors:

Julia Butt¹, Rajagopal Murugan², Theresa Hippchen³, Sylvia Olberg^{4,5}, Monique van Straaten⁶, Hedda Wardemann², Erec Stebbins⁶, Hans-Georg Kräusslich^{4,5}, Ralf Bartenschlager^{5,7,8}, Hermann Brenner^{9,10}, Vibor Laketa^{4,5}, Ben Schöttker^{9,10}, Barbara Müller⁴, Uta Merle³, Tim Waterboer^{1*}

Affiliations:

¹Infections and Cancer Epidemiology, German Cancer Research Center (Deutsches Krebsforschungszentrum, DKFZ), Heidelberg, Germany

²B Cell Immunology, German Cancer Research Center (Deutsches Krebsforschungszentrum, DKFZ), Heidelberg, Germany

³Department of Internal Medicine IV, University Hospital Heidelberg, Heidelberg, Germany

⁴Department of Infectious Diseases, Virology, University Hospital Heidelberg, Heidelberg, Germany

⁵German Center for Infection Research (DZIF), Heidelberg partner site, Heidelberg, Germany

⁶ Division of Structural Biology of Infection and Immunity, German Cancer Research Center (Deutsches Krebsforschungszentrum, DKFZ), Heidelberg, Germany

⁷Department of Infectious Diseases, Molecular Virology, Heidelberg University, Heidelberg, Germany

⁸Division Virus-Associated Carcinogenesis, German Cancer Research Center (DKFZ), Heidelberg, Germany

⁹Division of Clinical Epidemiology and Aging Research, German Cancer Research Center (Deutsches Krebsforschungszentrum, DKFZ), Heidelberg, Germany

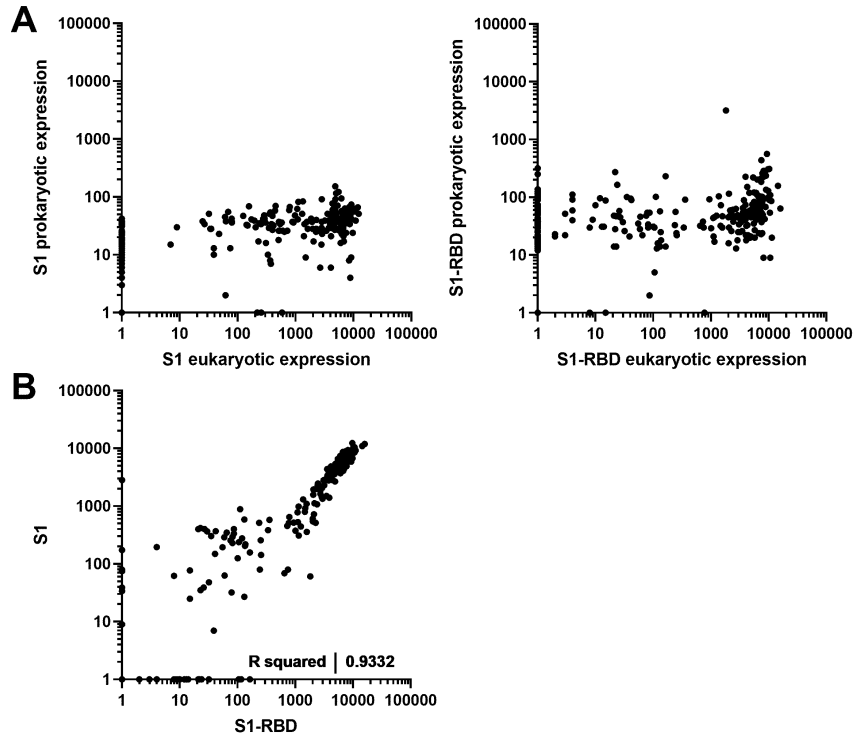
¹⁰Network Aging Research, University of Heidelberg, Heidelberg, Germany

*** To whom correspondence should be addressed: t.waterboer@dkfz-heidelberg.de**

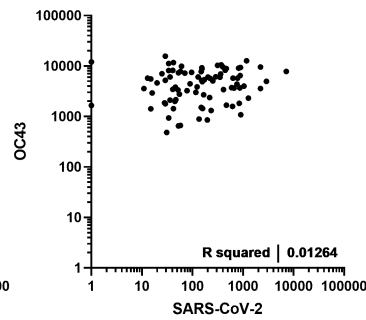
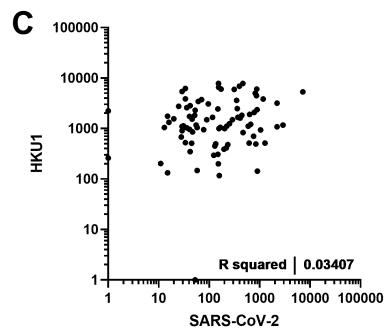
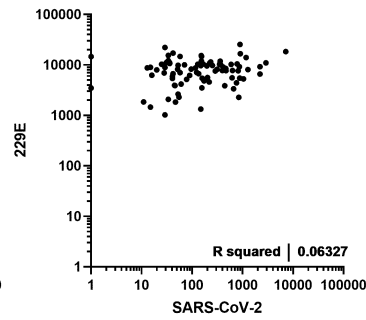
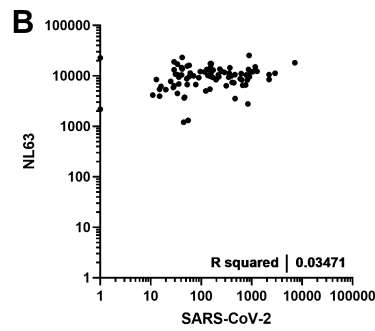
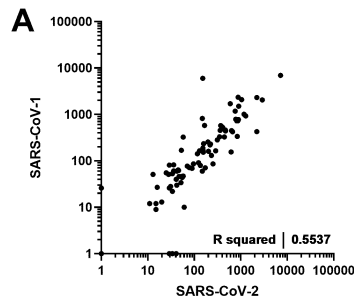
Funding:

This work was generously supported by the Dieter Morszeck Stiftung. Data and sample collection for the ESTHER study were supported by a grant from the Baden-Württemberg State Ministry of Science, Research and Arts.

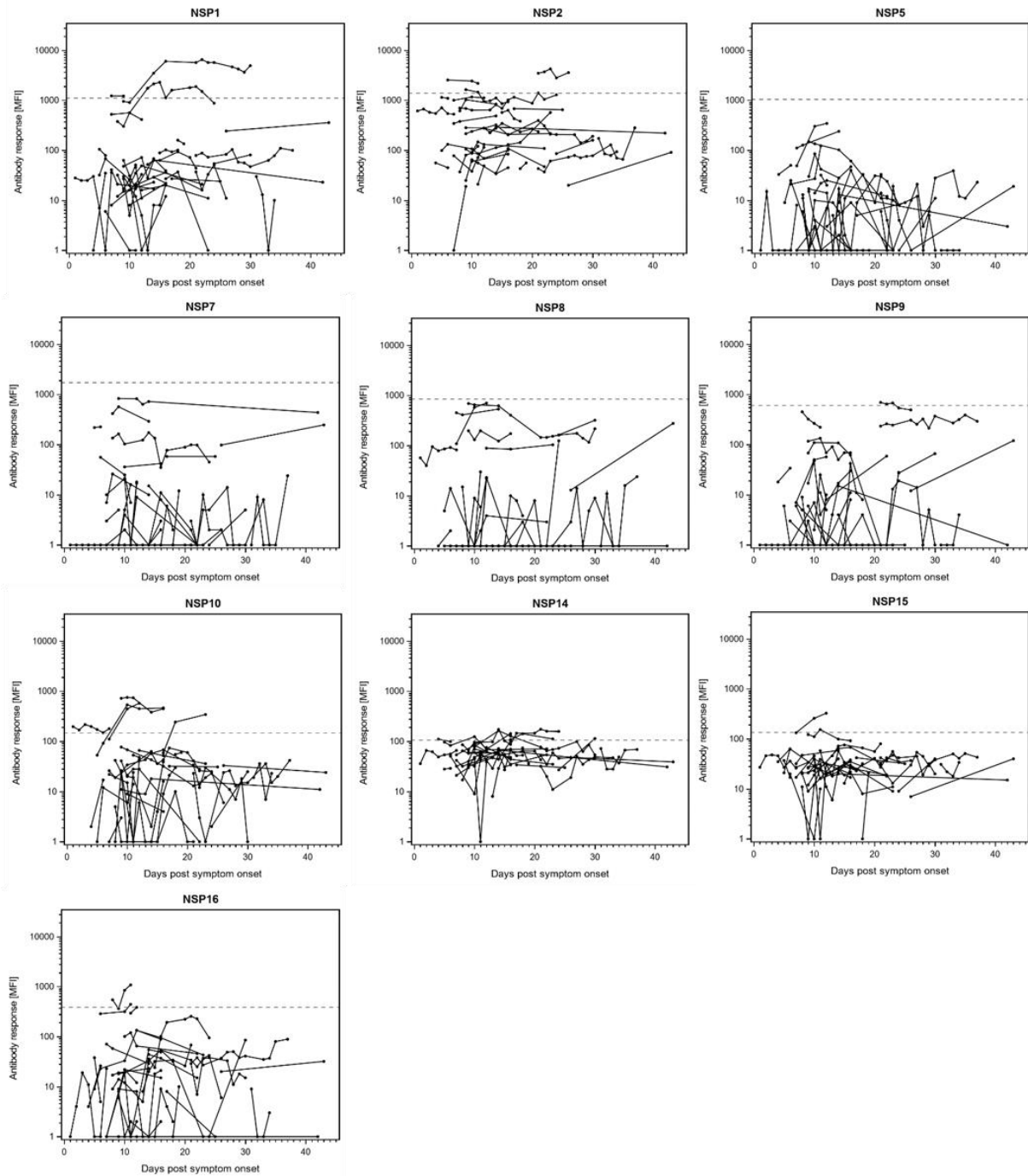
SUPPLEMENTARY MATERIAL



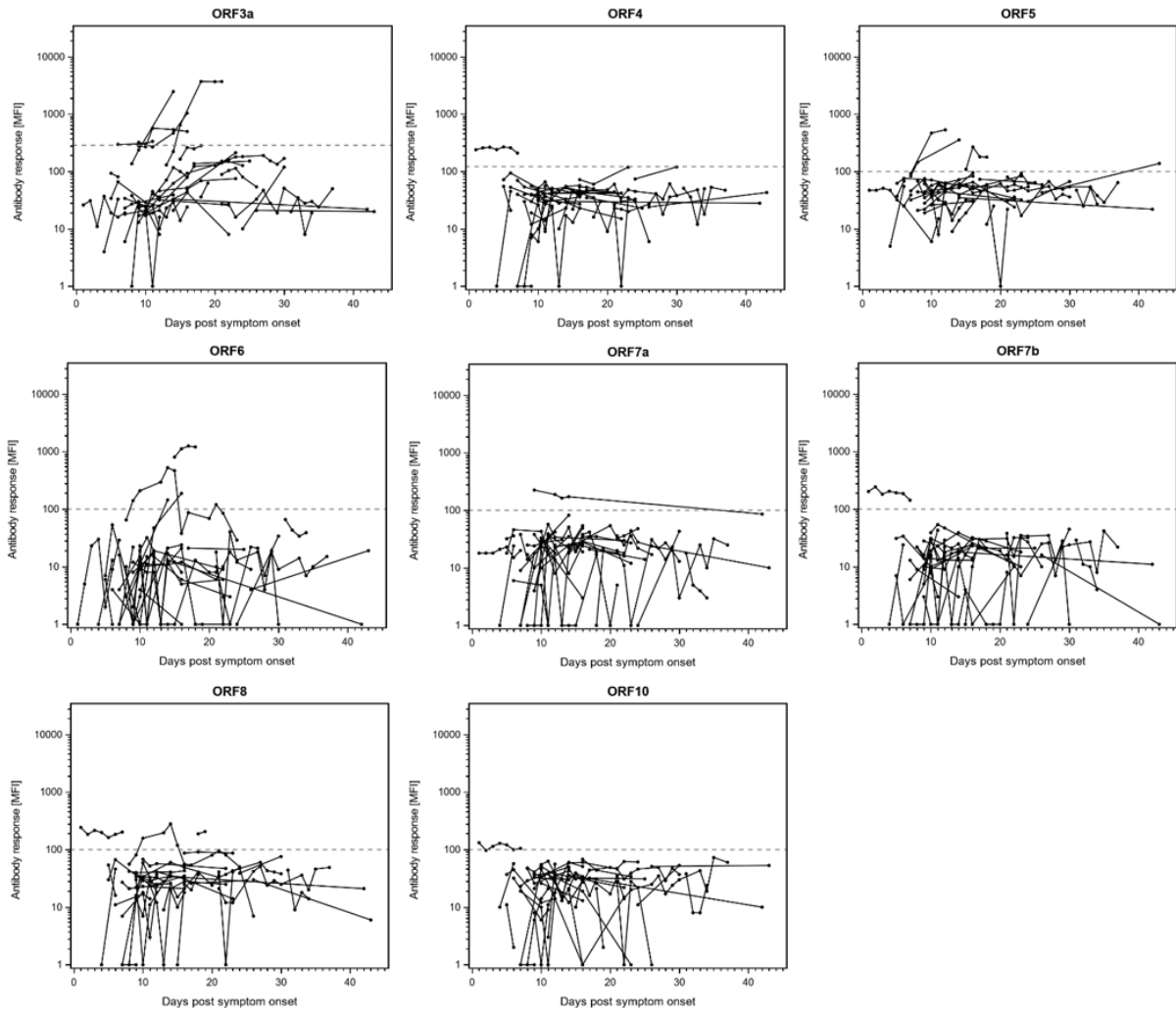
Supplementary figure S1: Antibody responses to SARS-CoV-2 proteins S1 and S1-RBD in n=174 serum samples of Covid-19 patients and n=85 serum samples of pre-pandemic controls. A) Comparison of antibody responses (MFI) to S1 and S1-RBD proteins expressed in HEK293 (eukaryotic expression) to those expressed in *E. coli* BL21 (prokaryotic expression); B) Correlation of antibody responses (MFI) to eukaryotically expressed S1 and S1-RBD; the Pearson correlation coefficient (R squared) is given as a measure for correlation.



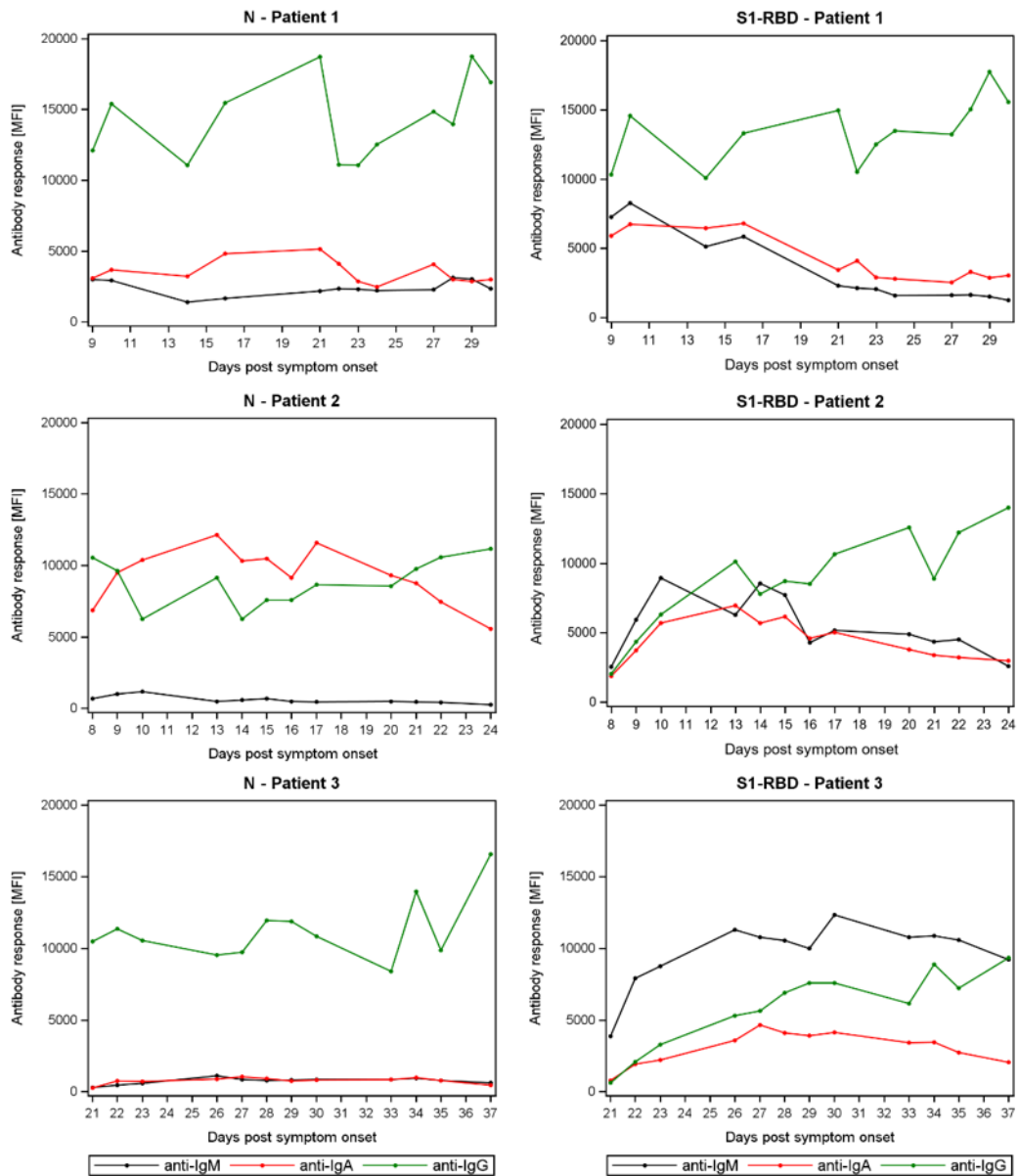
Supplementary figure S2: Correlation of antibody responses to protein N of SARS-CoV-2 to those of other CoVs. Antibody responses (MFI) to protein N of SARS-CoV-2 are compared to those of SARS-CoV-1 and ccCoVs: A) SARS-CoV-1, B) α -CoVs NL63 and 229E, and c) β -CoVs OC43 and HKU1. Blood samples were drawn prior to the Covid-19 pandemic (n=85). The Pearson correlation coefficient (R squared) is given as a measure for correlation.



Supplementary figure S3a: Antibody responses (IgM/IgA/IgG) to SARS-CoV-2 non-structural proteins in longitudinal samples of n=32 hospitalized Covid-19 patients. The antibody response (MFI) is plotted against days post symptom onset. The dashed line indicates the antigen-specific cut-off defined as mean plus three times standard deviation in n=85 pre-pandemic controls.



Supplementary figure S3b: Antibody responses to SARS-CoV-2 ORF proteins in longitudinal samples of n=32 hospitalized Covid-19 patients. The antibody response (MFI) is plotted against days post symptom onset. The dashed line indicates the antigen-specific cut-off defined as mean plus three times standard deviation in n=85 pre-pandemic controls.



Supplementary figure S4: Antibody response of different immunoglobulin isotypes (M, A, and G) to SARS-CoV-2 proteins N and S1-RBD in three Covid-19 patients with longitudinal samples. The IgM, IgA, and IgG antibody response (MFI) is plotted against days post symptom onset.