

Supporting Information for

**Biomimetic Virus-like Particles as SARS-CoV-2
Positive Controls for RT-PCR Diagnostics**

Soo Khim Chan¹, Pinyi Du², Karole Ignacio², Sanjay Metha², Isabelle Newton³, Nicole F. Steinmetz^{1,3,4,5,6,7}*

¹Department of NanoEngineering, ²Department of Medicine, ³Department of Radiology ⁴Department of Bioengineering, ⁵Center for Nano-ImmunoEngineering, ⁶Moore's Cancer Center, ⁷Institute for Materials Discovery and Design, University of California San Diego, 9500 Gilman Dr., La Jolla CA 92039, USA.

*correspondence: nsteinmetz@ucsd.edu

5'- **TAA TAC GAC TCA CTA TAG GG** AAATGC A TGTC TAA GAC AGC AT CTTC AAAATGTCTG ATAATGGACC
 CAAAATCAG CGAAATGCAC CCCGCATTAC GTTTGGTGGG CCCTCAGATT CAACTGGCAG TAACCAGAAT
 GGAGAACGCA GTGGGGCGCG ATCAAAAACA CGTCGGCCCC AAGGTTTACC CAATAATACT GCGTCTTGGT
 TCACCGCTCT CAC CTTTCGGCAG ACGTGGTCCA GAACAAACCC AAGGAAATTT TGGGGACCAG GAACTAATCA
 GACAAGGAAC TGATTACAAA CATTGGCCGC AAATTGCACA ATTTGCCCCC AGCGCTTCAG CGTTCTTCGG
 AATGTCGCGC ATGGGACTTC AGCATGGCGG TGTTCGAGA TTTGGACCTG CGAGCGGGTT CTGACCTGAA
 GGCTCTGCGC GGACTTGTGG AGACAGCCGC TCACCTTGGC TATTCAGTTG TTGCTATCAA TCATATCGTT
 GACTTTAAGG AAAAGAAACA GGAAATTGAA AAACCAGTAG CTGTTTCTGA ACTCTCACA ACTTTGCCAA
 TTGTACAGGG AAAATCAAGA CCAATTAATA TTTAACTAG ATTAACAATT ATTGTCTCGG ATCCATCTCA
 CTGCAATGTT **CTA GCA TAA CCC CTT GGG GCC TCT AAA CGG GTC TTG AGG GGT TTT TTG** -3'

Figure S1: SARS-CoV-2 detection module (SDM) is flanked by T7 promoter and T7 terminator at 5' and 3', respectively, for *in vitro* transcription. Both T7 promoter and T7 terminator are italicised bolded in blue. The Q β hairpin is underlined in orange, SARS-CoV-2 N1 region is in red, SARS-CoV-2 N2 region in green and RP region in black. The SDM flanked with T7 promoter and T7 terminator (SDM + T7_{P/T}) was cloned not in frame with open reading frame of plasmid to avoid proper protein translation of truncated SARS-CoV-2 gene.

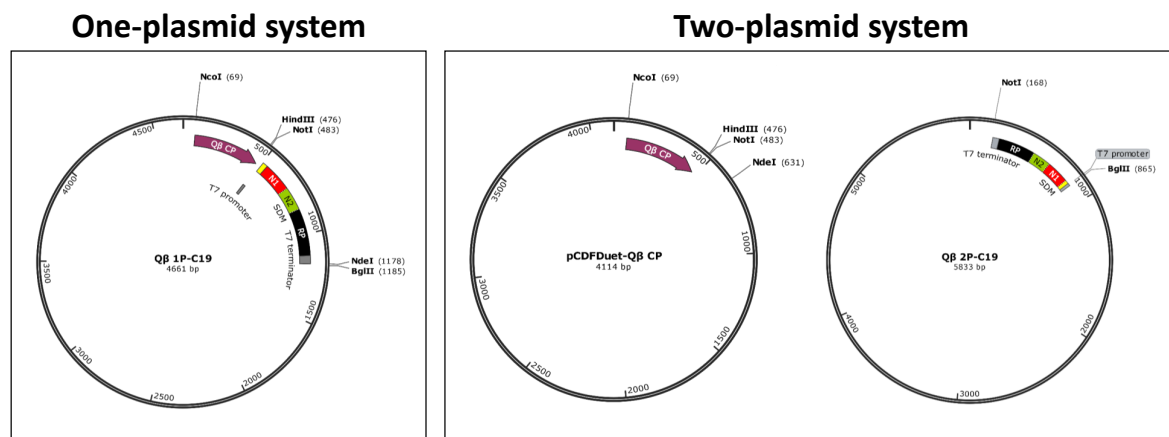


Figure S2: Vector maps of plasmids for production of Q β 1P-C19 VLPs and Q β 2P-C19 VLPs. **(Left)** One-plasmid system for production of Q β 1P-C19 VLPs: SDM + T7_{P/T} was cloned downstream of Q β capsid protein in plasmid pCDFDuetTM-Q β to construct plasmid Q β 1P-C19. **(Right)** Two-plasmid system for production of Q β 2-C19 VLPs: SDM + T7_{P/T} was cloned in pET-28a (+) to construct plasmid Q β 2P-C19 and co-express Q β capsid protein from pCDFDuetTM-Q β . N1, N2, and RP in SDM were indicated as red, green, and black, respectively.

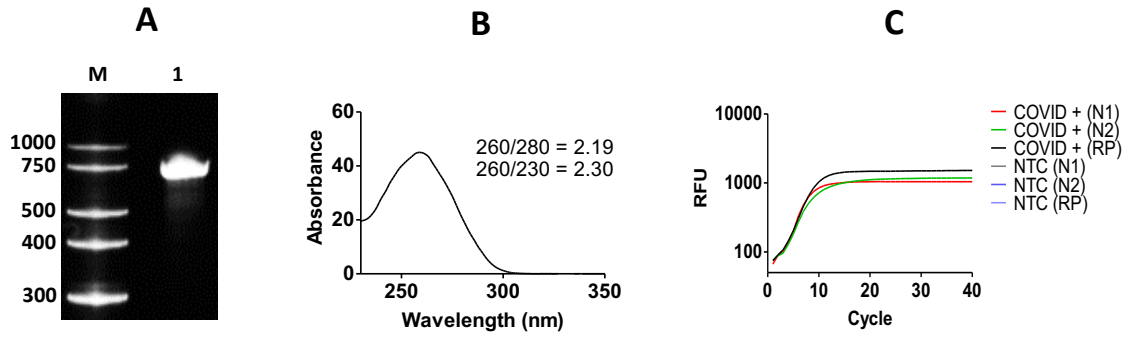


Figure S3: Characterization of the *in vitro* transcribed SDM RNA. **(A)** Analysis of *in vitro* transcribed SDM RNA on a denaturing 6% urea polyacrylamide gel. M: Thermo Fisher Scientific Century™-Plus RNA Markers. Lane 1: 200 ng of SDM RNA. **(B)** Determination of purity of SDM RNA by Nanodrop. Ratio 260/280 and 260/230 were determined. **(C)** RT-qPCR of *in vitro* transcribed SDM RNA (COVID +) by US CDC primers/probes sets for all the three regions (N1, N2, RP). No template control (NTC) serves as negative control.

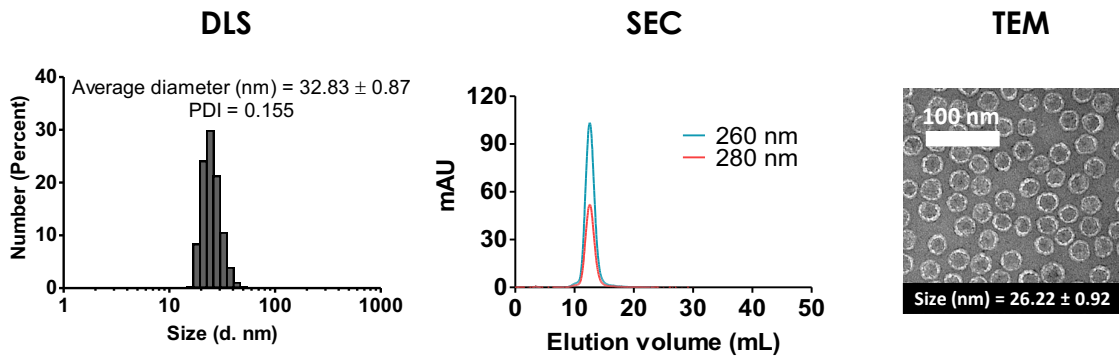


Figure S4: Characterization of Q β VLP by DLS, SEC, and TEM.

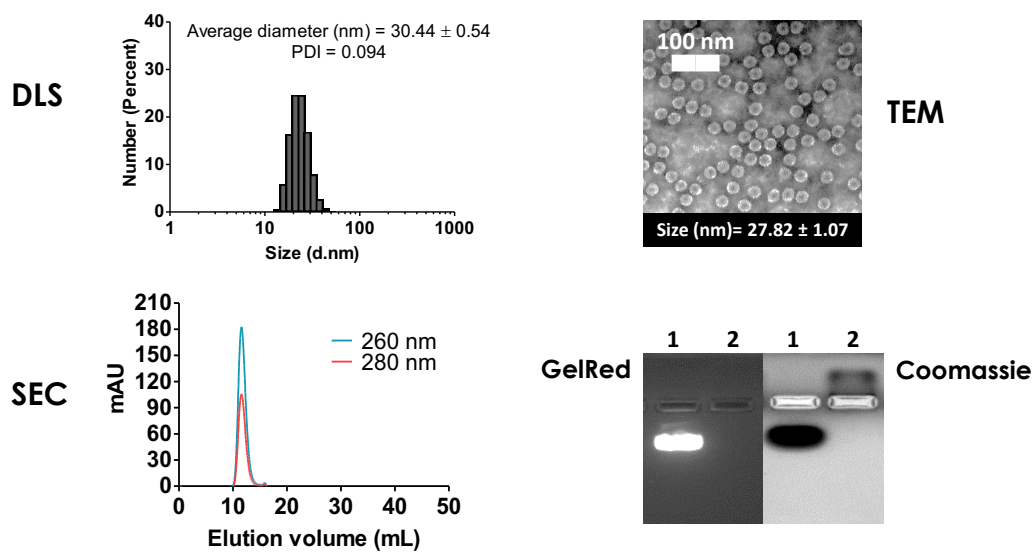


Figure S5: Characterization of wild type (WT) CCMV by DLS, SEC, and TEM. Disassembled CCMV was analysed by agarose gel shown at right bottom panel. Lane 1: WT CCMV. Lane 2: Disassembled CCMV. The same gel was stained by GelRed and Coomassie blue to show the presence/absence of RNA.

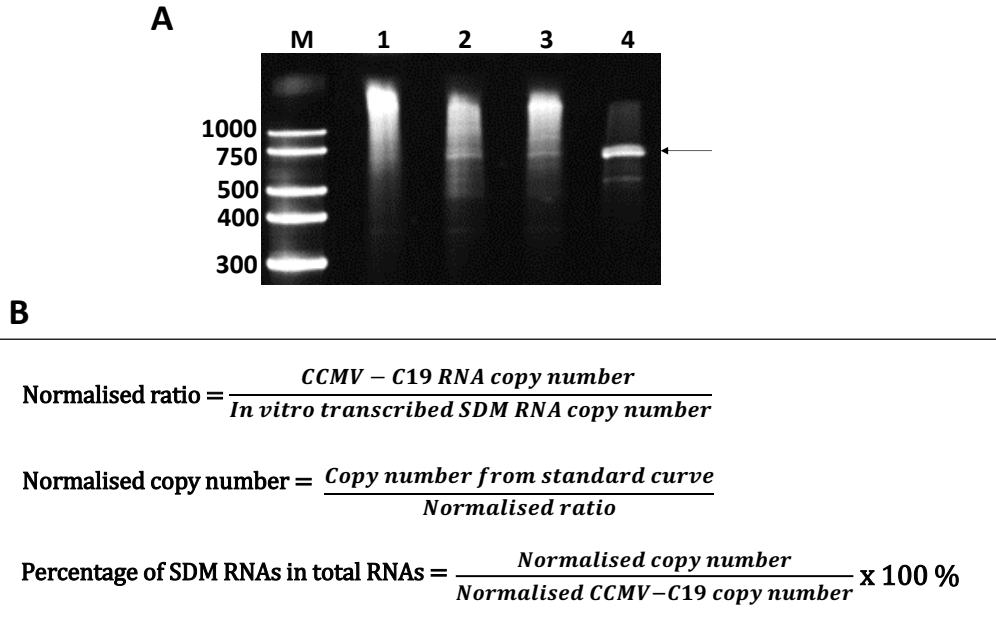


Figure S6: (A) Total nucleic acids extracted from VLPs were analysed on 6 % denaturing urea polyacrylamide gel. M: Thermo Fisher Scientific Century™-Plus RNA Markers. Lane 1: Q β VLP. Lane 2: Q β 1P-C19. Lane 3: Q β 2P-C19. Lane 4: CCMV-C19. Arrow indicates the SDM RNA. A total of 150 ng RNA was loaded into each well. (B) Equations for normalisation of copy number.

Table S1. Stability study: Analysis of RNAs from one-month old VLP-based SARS-CoV-2 positive controls. Total nucleic acids include carrier RNA.

	Q β 1P-C19	Q β 2P-C19	CCMV-C19
Total nucleic acids (ng/ μ g VLP)	223	169	106
260/280	2.58	2.54	2.89
260/230	2.74	5.56	3.19

Table S2. Sequences of ddPCR primers and probes used in clinical settings.

Primer/probe	Sequence (5' - 3')
N1-F	GAC CCC AAA ATC AGC GAA AT
N1-R	TCT GGT TAC TGC CAG TTG AAT CTG
N1-P	FAM/ZEN - ACC CCG CAT TAC GTT TGG TGG ACC - IBFQ
N2-F	TTA CAA ACA TTG GCC GCA AA
N2-R	GCG CGA CAT TCC GAA GAA
N2-P	FAM/ZEN - ACA ATT TGC CCC CAG CGC TTC AG - IBFQ
RP-F	GATTTGGACCTGCGAGCG
RP-R	GCGGCTGTCTCCACAAGT
RP-P	HEX/ZEN - CTGACCTGAAGGCTCT- IBFQ

*F refers to forward; R refers to reverse; P refers to probe

Table S3. Calculation of SDM RNA molecule encapsidated in VLPs.

	Qβ 1P-C19	Qβ 2P-C19	CCMV-C19
Protein concentration ($\mu\text{g}\cdot\text{mol}/\text{g}\cdot\text{mL}$)	2.60×10^{-5}	2.94×10^{-4}	2.66×10^{-5}
Total RNA concentration ($\mu\text{g}/\text{mL}$)	7.42	51.63	16.71
Percentage of SDM RNA in total RNA (%)	3.98	3.80	100
SDM RNA concentration ($\mu\text{g}\cdot\text{mol}/\text{g}\cdot\text{mL}$)	1.48×10^{-6}	9.86×10^{-6}	8.40×10^{-5}
Number of SDM RNA/particle	0.06	0.03	3.15