

1 Understanding the value of clinical symptoms of 2 COVID-19. A logistic regression model

3 **MSc. Pedro E. Fleitas^{1,2}, PhD. Jorge A. Paz³, PhD. Mario I. Simoy^{4,5}, MSc.**
4 **Carlos Vargas¹, PhD. Rubén O. Cimino^{1,2}, PhD. Alejandro J. Krolewiecki^{1*},**
5 **PhD. Juan P. Aparicio^{4,6}.**

- 6 1. Instituto de Investigaciones de Enfermedades Tropicales (IJET-CONICET),
7 Universidad Nacional de Salta. San Ramón de la Nueva Orán, Salta,
8 Argentina
- 9 2. Cátedra de Química Biología, Facultad de Ciencias Naturales, Universidad
10 Nacional de Salta. Salta, Salta, Argentina
- 11 3. Instituto de Estudios Laborales y del Desarrollo Económico (IELDE),
12 Consejo Nacional de Investigaciones Científicas y Técnicas (CONICET),
13 Universidad Nacional de Salta. Salta, Salta, Argentina.
- 14 4. Instituto de Investigaciones en Energía no Convencional (INENCO),
15 Consejo Nacional de Investigaciones Científicas y Técnicas (CONICET),
16 Universidad Nacional de Salta, Salta, Argentina.
- 17 5. Instituto Multidisciplinario sobre Ecosistemas y Desarrollo Sustentable,
18 Universidad Nacional del Centro de la Provincia de Buenos Aires. Tandil,
19 Buenos Aires, Argentina.
- 20 6. Simon A. Levin Mathematical, Computational and Modeling Sciences
21 Center, Arizona State University, Tempe, USA.

22 * Corresponding author: PhD. Alejandro Krolewiecki.

23 Mail: alekrol@hotmail.com

24 Tel: +5491131838673

25 Work address: Instituto de Investigaciones de Enfermedades Tropicales

26 (IIET). Alvarado 751, San Ramon de la Nueva Oran, Salta, Argentina. Zip

27 Code: A4530.

28

29 **Abstract**

30 **Background**

31 The new coronavirus SARS-CoV-2, the causative agent of COVID-19, is
32 responsible for the current pandemic outbreak worldwide. However, there is
33 limited information regarding the set of specific symptoms of COVID-19.
34 Therefore, the objective of this study was to describe the main symptoms
35 associated with COVID-19 to aid in the clinical diagnosis for the rapid
36 identification of cases.

37 **Methods and findings**

38 A cross sectional study of all those diagnosed by RT-PCR for SARS-CoV-2
39 between April 1 and May 24 in Argentina was conducted. The data includes
40 clinical and demographic information from all subjects at the time of
41 presentation, which were uploaded to the centralized national reporting
42 system at health centers. A total of 67318 individuals were included in this
43 study, where 12% tested positive for SARS-CoV-2. The study population
44 was divided in two age groups, a group aged 0 to 55 years-old (<56 group),
45 (median = 32, n=48748) and another group aged 56 to 103 years-old (≥56
46 group) (median =72, n=18570). Multivariate logistic regression analyses
47 showed that out of a total of 23 symptoms, only five were found to have a
48 positive association with COVID-19: anosmia (odds ratio [OR] 10.40, 95%
49 confidence interval [CI] 8.20-13.10, <56 group; OR 6.09 CI 3.05-12.20, ≥56
50 group) dysgeusia (OR 3.67, CI 2.7-4.9, <56 group; OR 3.53 CI 1.52-8.18,
51 ≥56 group), low grade fever (37.5-37.9° C) (OR 1.61, CI 1.20-2.05, <56

52 group; OR 1.80 CI 1.07-3.06, ≥ 56 group), cough (OR 1.20, CI 1.05-1.38,
53 < 56 group; OR 1.37 CI 1.04-1.80, ≥ 56 group) and headache only in < 56
54 group (OR 1.71, CI 1.48-1.99). In turn, at the time of presentation, the
55 symptoms associated with respiratory problems: chest pain, tachypnea,
56 dyspnea, respiratory failure and use of accessory muscles for breathing,
57 had a negative association with COVID-19 (OR < 1) or did not present
58 statistical relevance (OR = 1).

59 With the intention of helping the clinical diagnosis, we designed a model to
60 be able to identify possible cases of COVID-19. This model included 16
61 symptoms, the age and sex of the individuals, and was able to detect 80%
62 of those infected with SARS-CoV-2 with a specificity of 46%.

63 **Conclusions**

64 The analysis of symptoms opens the opportunity for a guidance and
65 improved symptoms based definition of suspected cases of COVID-19,
66 where multiple factors (age, sex, symptoms and interaction between
67 symptoms) are considered. We present a tool to help identify COVID-19
68 cases to provide quick information to aid decision-making by health
69 personnel and program managers.

70 **Introduction:**

71 The new coronavirus SARS-CoV-2, the causative agent of COVID-19, is
72 responsible for the current pandemic outbreak as declared by the World Health
73 Organization on January 30th 2020 (1). By September 2020, the number of people
74 infected with SARS-CoV-2 is over 28 million worldwide with more than 900
75 thousand deaths (2). The rapid spread of the virus has demonstrated its ability to
76 overwhelm the health systems of developed countries and poses in danger
77 countries with vulnerable health systems. These particular characteristics underline
78 the adoption of social-distancing measures including quarantines, lockdowns and
79 limitations in international travel implemented by most governments.

80 Until now, the most widely used diagnostic tool is real-time reverse transcriptase
81 polymerase chain reaction (RT-PCR) from nasal and pharyngeal swabs (3).
82 Although, RT-PCR is highly specific, has a suboptimal sensitivity (4), and false
83 negatives have been reported (5). Without proven therapeutic drugs or vaccines,
84 the identification and isolation of infected people through contact tracing or passive
85 detection is of vital importance for controlling disease spread (4). In this context, an
86 adequate characterization of suspected cases becomes of critical importance.

87 We analyzed the symptoms corresponding to a large database obtained from
88 individuals evaluated by RT-PCR in Argentina in order to identify the symptoms
89 associated with COVID-19 and develop a model to identify possible individuals
90 infected with SARS-CoV-2.

91 **Materials and Methods**

92 **Data source**

93 The data file was provided by the National Ministry of Health of Argentina
94 (Ministerio de Salud de la Nación Argentina. Dirección Nacional de Epidemiología
95 y Análisis de la Situación de Salud. Área de Vigilancia). The analysis included
96 67318 people evaluated through RT-PCR for SARS-CoV-2 throughout the country
97 from April 1 through May 24, 2020 and included in the registry of the National
98 Ministry of Health. Several variables including age, sex, RT-PCR result (positive or
99 negative), and symptoms at presentation were recorded in a structured
100 questionnaire for each individual. Symptoms (presence or absence) include
101 anosmia, dysgeusia, arthralgia, headache, confusion, seizures, diarrhea, dyspnea,
102 abdominal pain, chest pain, low grade fever (37.5-37.9° Celsius), high grade fever
103 ($\geq 38^{\circ}\text{C}$), respiratory failure, conjunctival injection, irritability, malaise, myalgia, food
104 refusal, tachypnea, use of accessory muscles for breathing (UAMB), cough and
105 vomiting. Before May 18 the form included 'odynophagia' and 'sore throat'. After
106 May 18 only odynophagia remained in the form. Therefore, all odynophagia
107 analyzes were performed considering the data from May 18 to May 24 (10225
108 individuals - 15 % of the entire dataset), the period of time where only odynophagia
109 was available in the questionnaire. We did not impose any further exclusion criteria
110 to limit selection bias. This study is reported as per the Strengthening the Reporting
111 of Observational Studies in Epidemiology (STROBE) guidelines (S1 STROBE
112 Checklist, Supporting material).

113 **Diagnosis by RT-PCR**

114 The diagnosis by RT-PCR was used as a reference standard for the design of the
115 regression model. All kits for use in Argentina were approved by the *Administración*
116 *Nacional de Medicamentos, Alimentos y Tecnología Médica*. A fluid sample was
117 taken with a swab from each nostril and pharynx. From these samples, an RNA
118 extraction was performed for the subsequent RT-PCR.

119 **Data analysis.**

120 Symptoms of COVID-19 have been reported to differ in different age groups (6),
121 therefore two age categories were used for the analysis. A group with ages from 0
122 to 55 years (<56 group, n = 48748) and another group with ages 56 to 103 years-
123 old (≥56 group, n = 18570). The association of symptoms (presence versus
124 absence) and sex (male versus female) with a RT-PCR positive result for SARS-
125 CoV-2 was studied using multivariate logistic regression analysis considering
126 pairwise interactions, in both age groups. The effect of the different covariates was
127 quantified by the odds ratio values and the corresponding 95% confidence intervals
128 obtained by logistic regression.

129 **Predictive models**

130 We developed and tested different models aimed to improve the identification of
131 suspected cases; with the premise that such models should have the fewest
132 significant variables and symptoms that could be collected without the need for a
133 physical exam and laboratory testing (e.g. respiratory failure). Odynophagia was
134 excluded from the model design because this symptom alone (that is, without the

135 option 'sore throat') was recorded only for 10225 individuals, and the exclusion of
136 this symptom did not produce a loss of the predictive capacity of the models.

137 To develop and test the models, the database (n=67318) was randomly divided
138 into two data sets (Training and Testing datasets) with the same percentage of RT-
139 PCR positive cases in each one. The Training set (n=53854) was used for the
140 design and internal validation of the models, while the Testing set (n=13464) was
141 used for external validation and evaluation of the predictive capacity of the model.
142 Models were compared using the Akaike Information Criterion, the area under the
143 receiver-operator characteristic curve (AUC) and the predictive value.

144 The best model was chosen through stepwise regression with bidirectional
145 elimination based on AIC. In addition, we performed a 100-fold cross-validation
146 method in which the training base is partitioned in 100 randomly selected subsets
147 and the model is fitted for each one. All statistical analyzes were performed with R
148 (7), and GraphPad Prism version 5.00 for Windows (La Jolla California USA,
149 www.graphpad.com).

150 **Results**

151 **Data description**

152 A total of 67318 individuals were included in this study; among them, 12% had a
153 positive RT-PCR for SARS-CoV-2 with a median of 37 years-old (IQR: 26-51),
154 while the group with a negative RT-PCR had a median of 40 years-old (IQR: 25-
155 59). Infection rates varied in different age groups, showing the highest rates in the
156 15 to 60 years-old group (Figure 1).

157 **Figure 1: SARS-CoV-2 infection in relation to age**

158 Significant differences were identified in the positivity rate of RT-PCR according to
159 the interval between the onset of symptoms and the time of sampling. It was
160 observed that for the day ranges of 0-3, 4-15 and 16-30 the proportion of positives
161 was 10.8, 13.7 and 8.6% respectively. Between the three intervals of days a
162 significant difference was observed ($p < 0.01$).

163 The <56 group (n = 48748) presented a median age of 32 (IQR: 20-42), where
164 48% were male and 52% female while the median age for the ≥56 group
165 (n=18570) was 72 (IQR: 63-81, 52% male and 48% female).

166 The most frequent symptoms for each age group were independent of the RT-PCR
167 result (Figure 2). For the <56 group the most frequently observed symptoms were
168 high-grade fever, cough, odynophagia, malaise and headache. For the ≥56 group
169 the most frequent symptoms were high-grade fever, cough, tachypnea,
170 odynophagia and malaise. However, the symptoms with the highest proportion of a
171 confirmatory RT-PCR result were anosmia, dysgeusia, low grade fever,

172 odynophagia, headache, and cough for the <56 group (Figure 3a); and anosmia,
173 dysgeusia, odynophagia and low grade fever for the ≥56 group (Figure 3b).

174 **Figure 2: Frequency of symptoms in the <56 group, and ≥56 group. a.** whole
175 study population with positive and negative RT-PCR. **b.** Only individuals with
176 positive RT-PCR. For odynophagia, the analyzed database is restricted to 10255
177 individuals.

178 **Figure 3: Proportion (%) of individuals with positive and negative RT-PCR for**
179 **SARS-CoV-2 for each of the symptoms used in the database. a.** <56 group (n:
180 48748). **b.** ≥56 group (n: 18570). For odynophagia, the analyzed database is
181 restricted to 10255 individuals.

182 **Clinical features associated with COVID-19**

183 The association between sex, symptoms and infection with SARS-CoV-2 was
184 studied using logistic regression analysis considering pairwise interactions (see
185 supporting material for details). The odd ratios obtained for each of the symptoms
186 evaluated are displayed in Figure 4 for both age-groups. Sex was significant only
187 for the <56 group with males appearing with higher odds than females (OR =1.23
188 (IC 95%: 1.07,1.40)).

189 **Figure 4: Odd ratios (OR) of SARS-CoV-2 infection corresponding to the presence of**
190 **symptoms for (a) <56 group and (b) ≥56 group.** In green statistically significant ORs
191 (p <0.05) and in gray non-significant ORs (p> 0.05). For odynophagia, the
192 analyzed database is restricted to 10255 individuals.

193 In the <56 group the symptoms with a positive association with COVID-19 were
194 anosmia, dysgeusia, headache, low grade fever and cough; while UAMB,
195 tachypnea, conjunctival injection, vomiting, abdominal pain, odynophagia and high
196 grade fever have a negative association. The rest of the symptoms did not show
197 statistical significant association with COVID-19, but some of them have a
198 significant interaction with other symptoms (S2 Table, Supporting material).
199 Significantly higher ORs were found with the combination of anosmia and
200 dysgeusia (OR=19.84), anosmia and conjunctival injection (OR=17.40), anosmia
201 and cough (OR=9.73) and anosmia and malaise (OR=6.14).

202 For the ≥56 group, symptoms at presentation with positive association with COVID-
203 19 were anosmia, disgeusia, low grade fever and cough, while vomiting,
204 respiratory failure, food refusal, chest pain, tachypnea and dyspnea presented
205 negative association. Other symptoms did not show statistically significant
206 association with COVID-19, but as in the previous case, some have significant
207 interactions (S3 Table, Supporting material). Significantly higher ORs were found
208 with the combination of low-grade fever and irritability (OR=14.32), and anosmia
209 and dysgeusia (OR=6.44).

210 **Logistic regression predictive model**

211 We considered several different logistic models for the probability of SARS-CoV-2
212 infection:

213
$$p = \frac{1}{1 + e^{-A}}$$

214 where A depends of the set of symptoms considered and other variables like sex,
215 age or days since symptoms onset. All tested models presented similar
216 characteristics regarding area under the curve, AIC value and predictive value.

217 The model with lower AIC value (35029) considers 16 symptoms, sex and three
218 quantitative variables: age, age squared and the number of symptoms (NS) as
219 described in Table 1. Cross validation did not show significant differences between
220 the model calculated with the training set and 100 randomly chosen partitions.

221 The variable age square captures the behavior of the proportion of positive cases
222 with age (Figure 1). An alternative model without the variable age square is
223 described in the supporting material S4 Appendix. It can also be observed that the
224 number of symptoms has a negative contribution in the equation resulting in
225 decreases in the likelihood of COVID-19 infection as the number of symptoms
226 increases.

227 **Table 1: Characteristics of the logistic regression model.** p: probability of being
 228 infected with SARS-CoV-2, AUC= Area under the receiver-operator characteristic
 229 curve, PPV: predicted positive value, NPV: Negative predicted value.

Equation $P=1/(1+e^{-A})$ AUC=0.7167	Predictive capacity for a cut line of p =0.08839
$A = -2.137 + 0.03422 * \text{age} - 0.001131 * \text{age}^2 - 0.7953 * \text{AS} -$ $0.1805 * \text{sex} + 2.236 * \text{anosmia} + 0.2680 * \text{arthralgia} -$	Sensitivity=0.80 (0.78,0.82)
$0.5870 * \text{seizure} + 0.1484 * \text{diarrhea} + 1.272 * \text{dysgeusia}$	Specificity=0.46 (0.45,0.47)
$+ 0.1812 * \text{dyspnea} + 0.01535 * \text{chest paint} + 0.9989 * \text{low fever}$	PPV=0.17 (0.16,0.17)
$+ 0.2446 * \text{high fever} + 0.08885 * \text{conjunctival injection}$	NPV=0.95 (0.94,0.95)
$+ 0.2330 * \text{discomfort} + 0.4379 * \text{myalgia} + 0.2694 * \text{food refusal}$	
$- 0.3359 * \text{tachypnea} + 1.066 * \text{cough} + 1.640 * \text{headache}$	
$+ 7.964 * 10^{-6} * \text{age} * \text{age}^2 + 0.01485 * \text{age} * \text{AS} + 0.01807 * \text{age} * \text{sex} -$	
$0.03391 * \text{age} * \text{headache} - 0.01412 * \text{age} * \text{cough} - 1.178 * 10^{-4} * \text{age}^2 * \text{AS}$	
$- 1.981 * 10^{-4} * \text{age}^2 * \text{sex} + 2.596 * 10^{-4} * \text{age}^2 * \text{headache}$	
$+ 1.446 * 10^{-4} * \text{age}^2 * \text{cough} + 0.7360 * \text{anosmia} * \text{conjunctival}$	
$\text{injection} + 0.6033 * \text{diarrhea} * \text{chest paint}$	
$+ 0.7430 * \text{dysgeusia} * \text{tachypnea}$	
$+ 0.6774 * \text{dyspnea} * \text{conjunctival injection} + 0.4194 * \text{high fever} * \text{tachypnea}$	

230

231 **Discussion**

232 The analysis of this large cohort allows an age-based characterization of the
233 symptoms associated with COVID-19 at presentation, in the search for an
234 improved clinical based decision strategy for the use of diagnostic tests and case
235 management. To interrupt the spread of SARS-CoV-2, early detection, isolation,
236 and the implementation of a robust system to trace contacts is required (WHO,
237 2020). Among the non-severe symptomatic cases, non-specific symptoms shared
238 with other acute upper-respiratory infections hamper proper case identification and
239 implementation of rapid isolation measures. In contrast to most acute upper-
240 respiratory infections (including many respiratory coronaviruses), COVID-19 poses
241 a special challenge in requiring specific identification for clinical and public health
242 management. To facilitate the early detection of patients with COVID-19, we
243 analyzed the symptoms of 67318 individuals studied with RT-PCR, of which 12%
244 had a positive test result.

245 The most frequently reported symptoms among case series of COVID-19 include
246 fever, cough, dyspnea and shortness of breath (8,9). Other symptoms include sore
247 throat, diarrhea, nausea, vomiting, myalgia, headache and confusion (8). We found
248 that in the present database the most frequent symptoms were cough, high-grade
249 fever, and odynophagia. However, more frequent symptoms not necessarily are
250 indicators of COVID-19. Our analysis revealed that the symptoms positively
251 associated with COVID-19 are anosmia, dysgeusia, low grade fever (37.5 to 38
252 °C), cough and headache (the later only in the <56 group). Another group of
253 symptoms show a negative association with a positive RT-PCR for SARS-CoV-2,

254 therefore suggesting alternative diagnoses (Figure 3). Our analysis also revealed
255 that some symptoms interact with each other, modifying their ORs. In relation to
256 this, anosmia and dysgeusia were observed to have a significant and positive
257 interaction increasing the already high and positive OR of each of them. This is in
258 accordance with other authors stating that anosmia and dysgeusia have a positive
259 predictive value of 77% each of them and 83% if they are together (10). Although
260 anosmia can appear in other AURI, it has been suggested that the lack of
261 accompanying rhinitis or nasal swelling is more typically associated with COVID-19
262 (11); we were not able to test this hypothesis because the questionnaire does not
263 contain rhinitis as a variable. Another combined effect to be highlighted was
264 anosmia and conjunctival injection in the <56 age group and low-grade fever and
265 irritability in the elder group. These combinations showed ORs >14. Low grade
266 fever had a positive association with COVID-19 in both age groups, while high
267 grade fever ($\geq 38^{\circ}\text{C}$) showed a negative association in the <56 group and was not
268 significant in the ≥ 56 group.

269 In this study we also developed a model based on symptoms at presentation, sex
270 and age. In our database, patient's age was found as a significant variable for
271 establishing correlations between symptoms and COVID-19. Although the age-
272 dependent variability in the proportion of RT-PCR positive results in our study
273 population might reflect differences in exposure due to school closure and an
274 active protection of the elder, the model achieves comparable predictive values in
275 all age groups. In view of the burden of morbidity and mortality in high risk groups,
276 models to predict the likelihood of infection should be interpreted with caution and

277 not be used to limit the corresponding testing of groups at increased risk of severe
278 disease.

279 This study was conducted with patients diagnosed between April and May 2020,
280 prior to the influenza season in Argentina; this should also place our results in the
281 adequate context of the alternative diagnoses that could modify the specificity of
282 the symptoms based on the type and prevalence of these agents; in the current
283 case, with most cases occurring in Buenos Aires and its metropolitan area, this
284 same area was affected by its largest recorded dengue outbreak and a significant
285 reduction of influenza-like illnesses (12).

286 This study has limitations; the diagnostic test of choice, RT-PCR shows a
287 sensitivity of 56–83% (13); therefore, the sensitivity and specificity measures of the
288 model may lose precision. While suffering from the lack of a highly sensitive
289 diagnostic standard, identifying clinical characteristics that raise the pretest
290 probability of the infection could help interpretations of the RT-PCR result when
291 combined with predictive models, epidemiological factors and complementary
292 diagnostic methods like chest imaging (14). In our analysis, a significantly higher
293 probability of a positive RT-PCR was identified if the test was performed when the
294 interval between symptoms initiation and sampling was between 4 and 15 days.
295 Another limitation derives from the circumstance of the data collection, which has
296 not been design as a prospective research tool but rather as a surveillance system
297 with no monitoring system and therefore subject to errors in upload.

298 In summary, this symptoms-based analysis of a cohort tested for COVID-19
299 identified a group of symptoms (anosmia/dysgeusia, low-grade fever, cough and

300 headache) with significant association with a positive RT-PCR. These findings
301 show that a regression model based on multiple factors (age, sex, interaction
302 between symptoms) could be used as a complementary method for the rapid
303 identification of possible COVID-19 cases and the necessary precautionary
304 measures.

305 **References**

- 306 1. World Health Organization (WHO). Novel Coronavirus (2019-nCoV)
307 Situation Report - 12 1 February 2020. WHO Bull. 2020;(JANUARY):1–7.
- 308 2. Hopkins C for SS and E (CSSE) J. COVID-19 Map - Johns Hopkins
309 Coronavirus Resource Center. [cited 2020 September 5]. Available from:
310 <https://coronavirus.jhu.edu/map.html>
- 311 3. Pascarella G, Strumia A, Piliago C, Bruno F, Del Buono R, Costa F, et al.
312 COVID-19 diagnosis and management: a comprehensive review. Vol. 2019,
313 Journal of Internal Medicine. 2020. 0–2 p.
- 314 4. Ai T, Yang Z, Hou H, Zhan C, Chen C, Lv W, et al. Correlation of Chest CT
315 and RT-PCR Testing in Coronavirus Disease 2019 (COVID-19) in China: A
316 Report of 1014 Cases. 2020;78(May):1–15.
- 317 5. Zhang JJ, Cao YY, Dong X, Wang BC, Liao MY, Lin J, et al. Distinct
318 characteristics of COVID-19 patients with initial rRT-PCR positive and
319 negative results for SARS-CoV-2. Allergy. 2020.
- 320 6. Yang R, Gui X, Xiong Y. Comparison of Clinical Characteristics of Patients
321 with Asymptomatic vs Symptomatic Coronavirus Disease 2019 in Wuhan,
322 China. JAMA Netw open. 2020;3(5):e2010182.
- 323 7. R Core Team. R: A language and environment for statistical computing. R
324 Foundation for Statistical Computing, Vienna, Austria. 2013. Available from:
325 <http://www.r-project.org/>

- 326 8. Wu YC, Chen CS, Chan YJ. The outbreak of COVID-19: An overview. J
327 Chinese Med Assoc. 2020;83(3):217–20.
- 328 9. Yang J, Zheng Y, Gou X, Pu K, Chen Z, Guo Q, et al. Prevalence of
329 comorbidities and its effects in coronavirus disease 2019 patients: A
330 systematic review and meta-analysis. *Int J Infect Dis.* 2020;94:91–5.
- 331 10. Zayet S, Klopfenstein T, Mercier J, Kadiane-Oussou NJ, Lan Cheong Wah L,
332 Royer P-Y, et al. Contribution of anosmia and dysgeusia for diagnostic of
333 COVID-19 in outpatients. *Infection.* 2020;(0123456789):0–4.
- 334 11. Zubair AS, McAlpine LS, Gardin T, Farhadian S, Kuruvilla DE, Spudich S.
335 Neuropathogenesis and Neurologic Manifestations of the Coronaviruses in
336 the Age of Coronavirus Disease 2019: A Review. *JAMA Neurology.*
337 American Medical Association; 2020.
- 338 12. Boletín integral de vigilancia. Edición semanal.499 Boletín Integrado de
339 Vigilancia. 2020 [cited 2020 Jul 7]. Available from:
340 https://www.argentina.gob.ar/sites/default/files/biv_499_se23.pdf
- 341 13. Kokkinakis I, Selby K, Favrat B, Genton B, Cornuz J. [Covid-19 diagnosis□:
342 clinical recommendations and performance of nasopharyngeal swab-PCR].
343 *Rev Med Suisse.* 2020;16(689):699—701.
- 344 14. Woloshin S, Patel N, Kesselheim AS. False Negative Tests for SARS-CoV-2
345 Infection — Challenges and Implications. *N Engl J Med.* 2020 Jun 5.
- 346

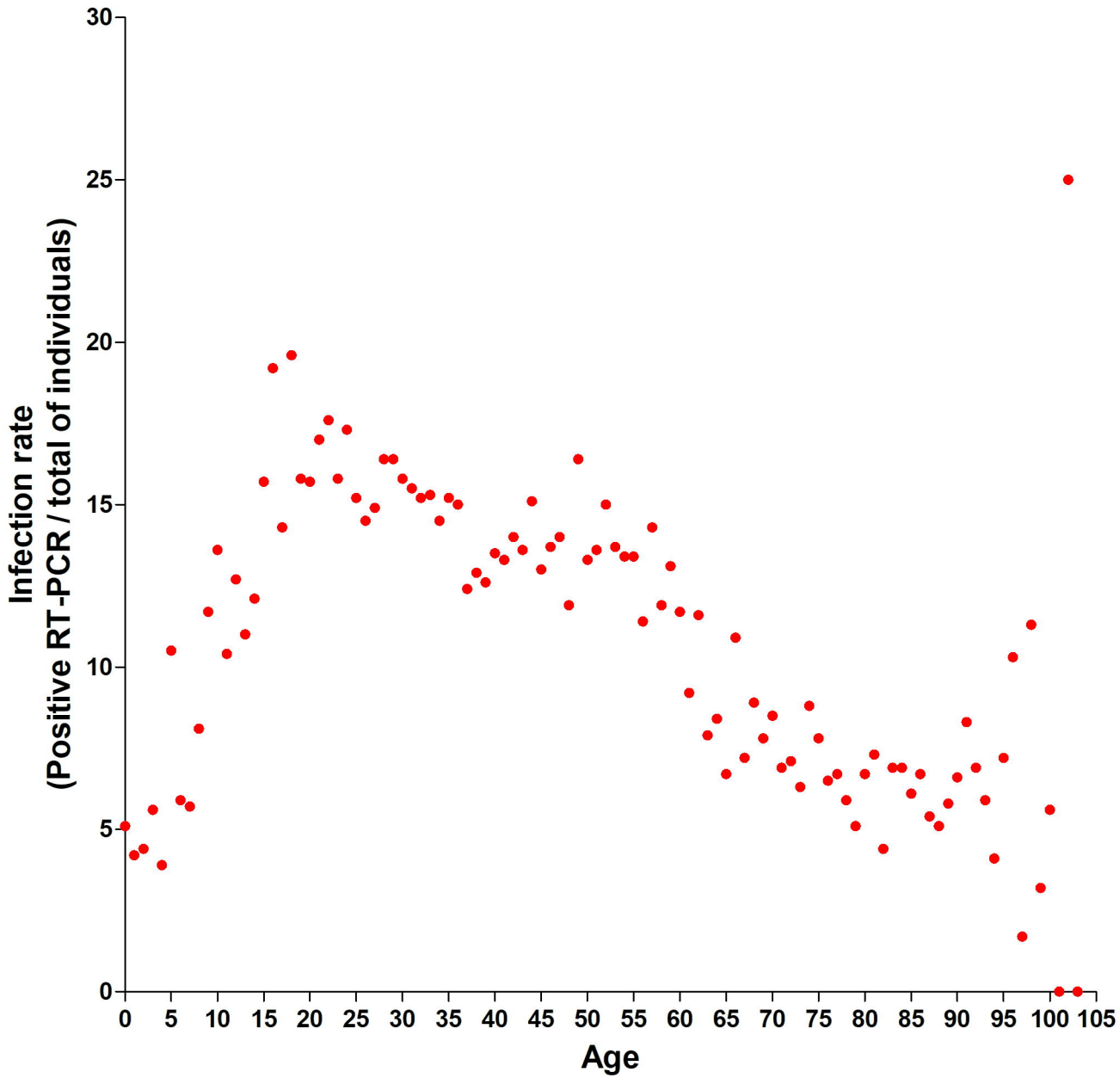
347 **Supporting information captions**

- 348 • S1 STROBE Checklist.

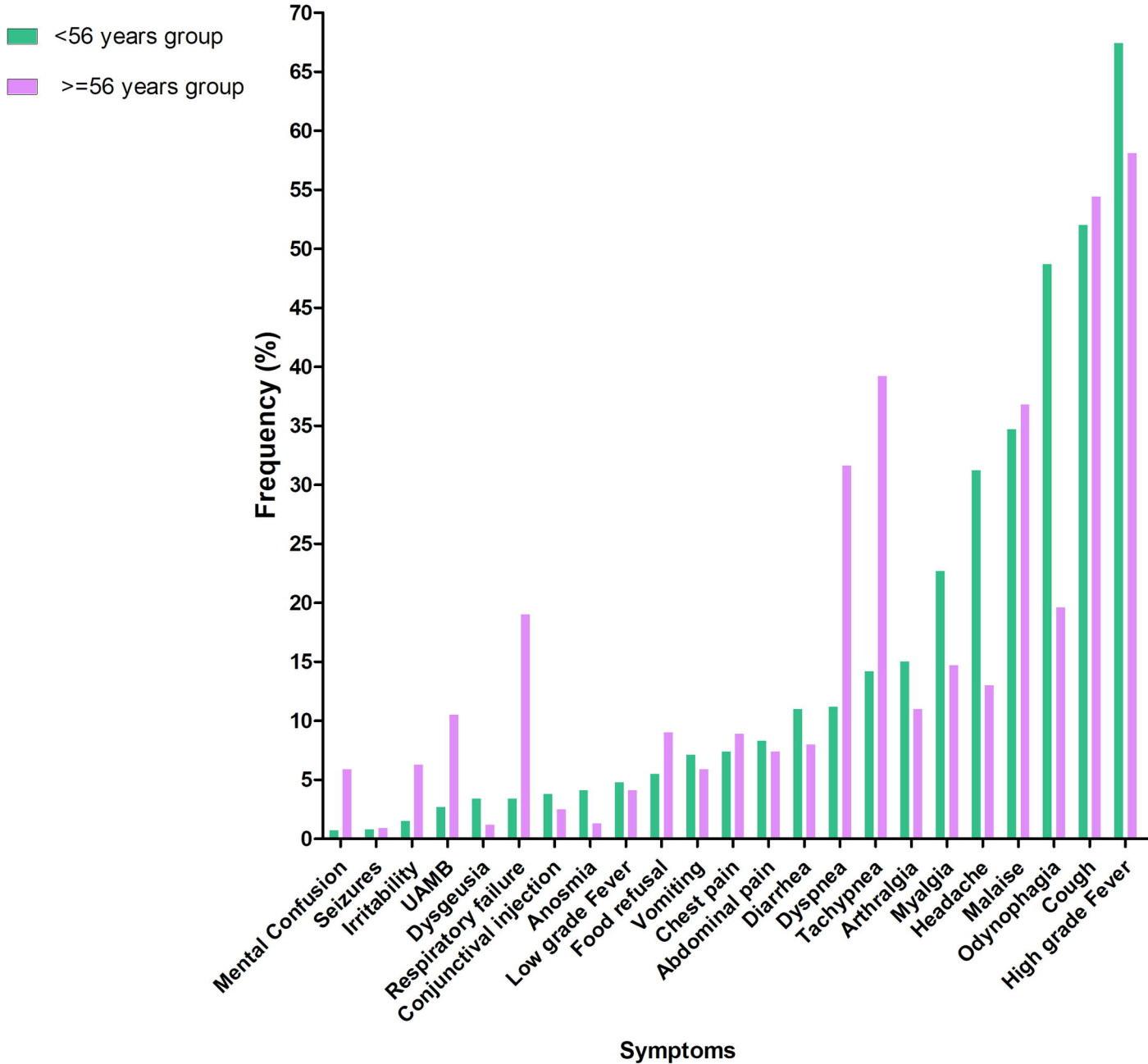
- 349 • S2 Table. Logistic regression for the group with ages from 0 to 55 years
350 (<56 group, n=48748).

- 351 • S3 Table. Logistic regression for the group with ages from 56 to 103 years-
352 old (≥ 56 group, n = 18570).

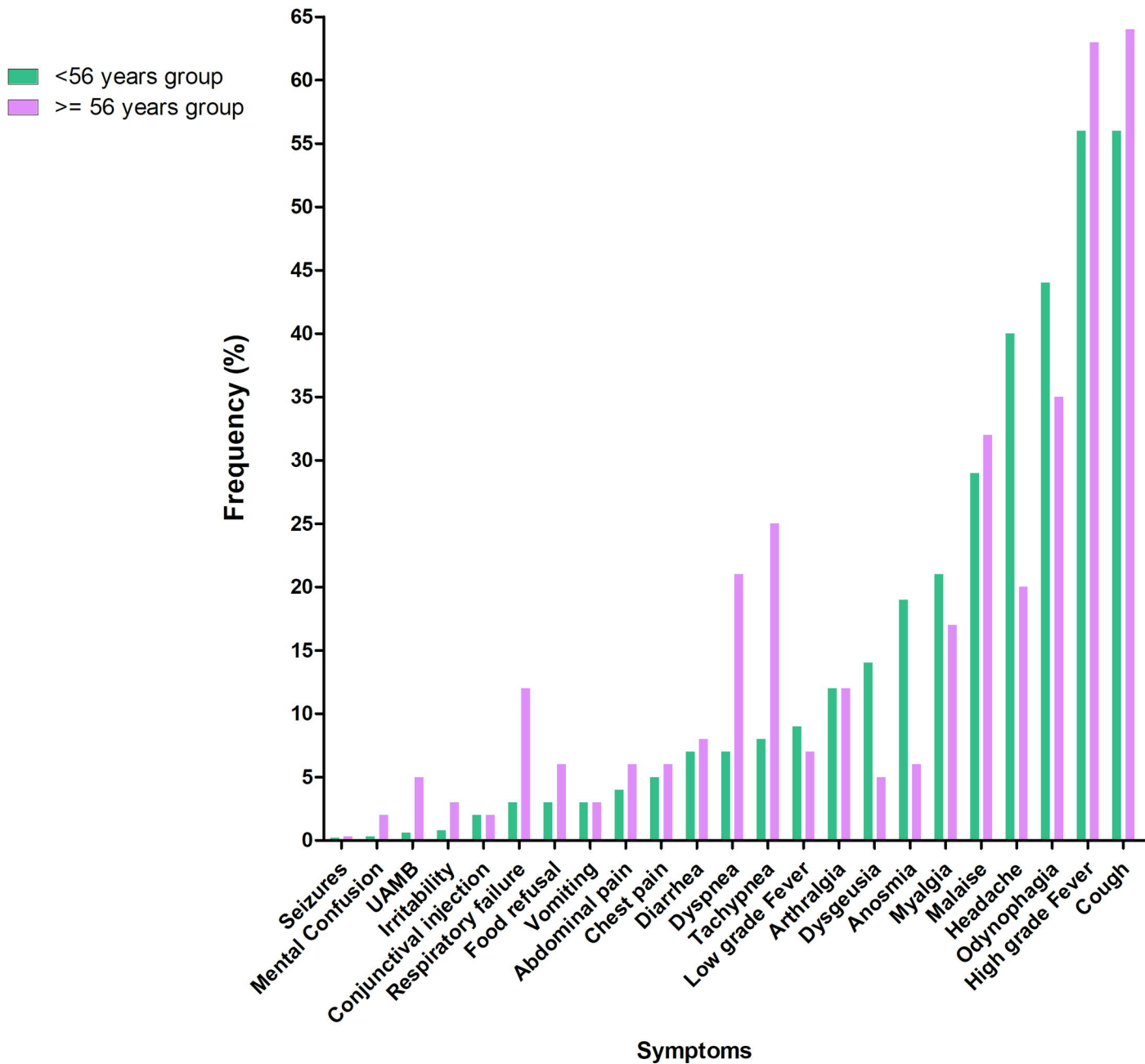
- 353 • S4 Appendix. Alternative model with the variables sex, age, 20 symptoms
354 and pairwise interactions.



a.

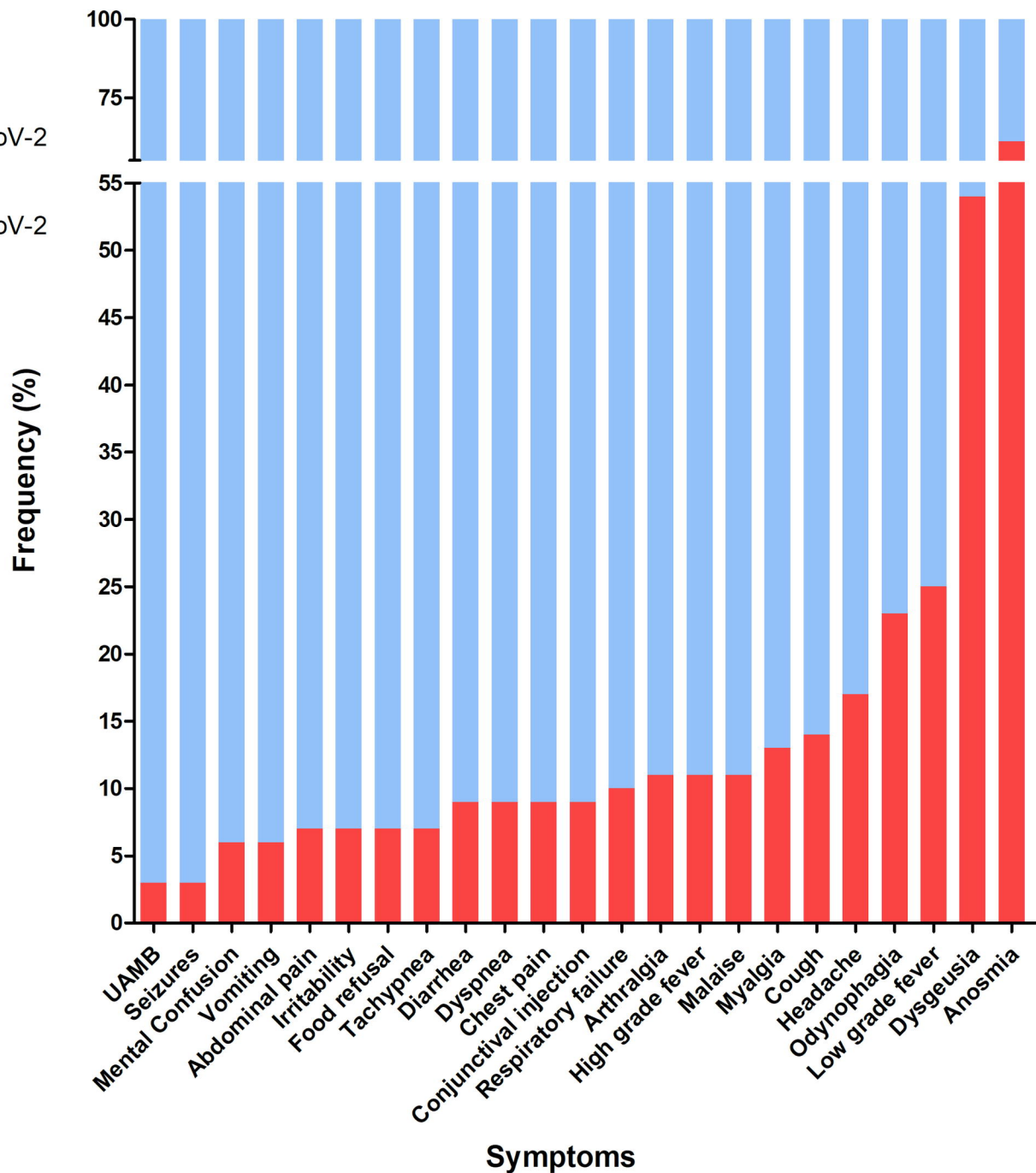


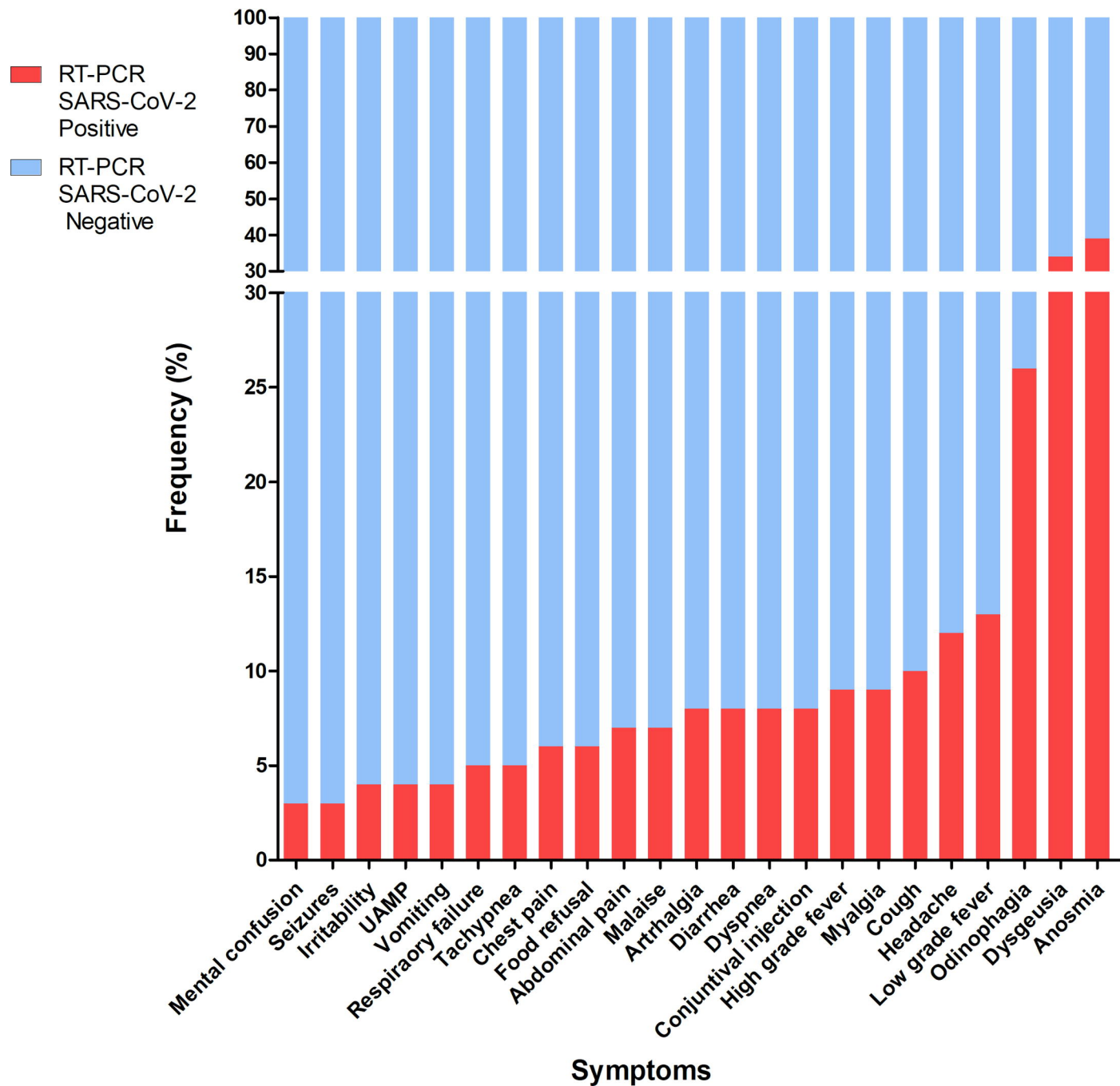
b.

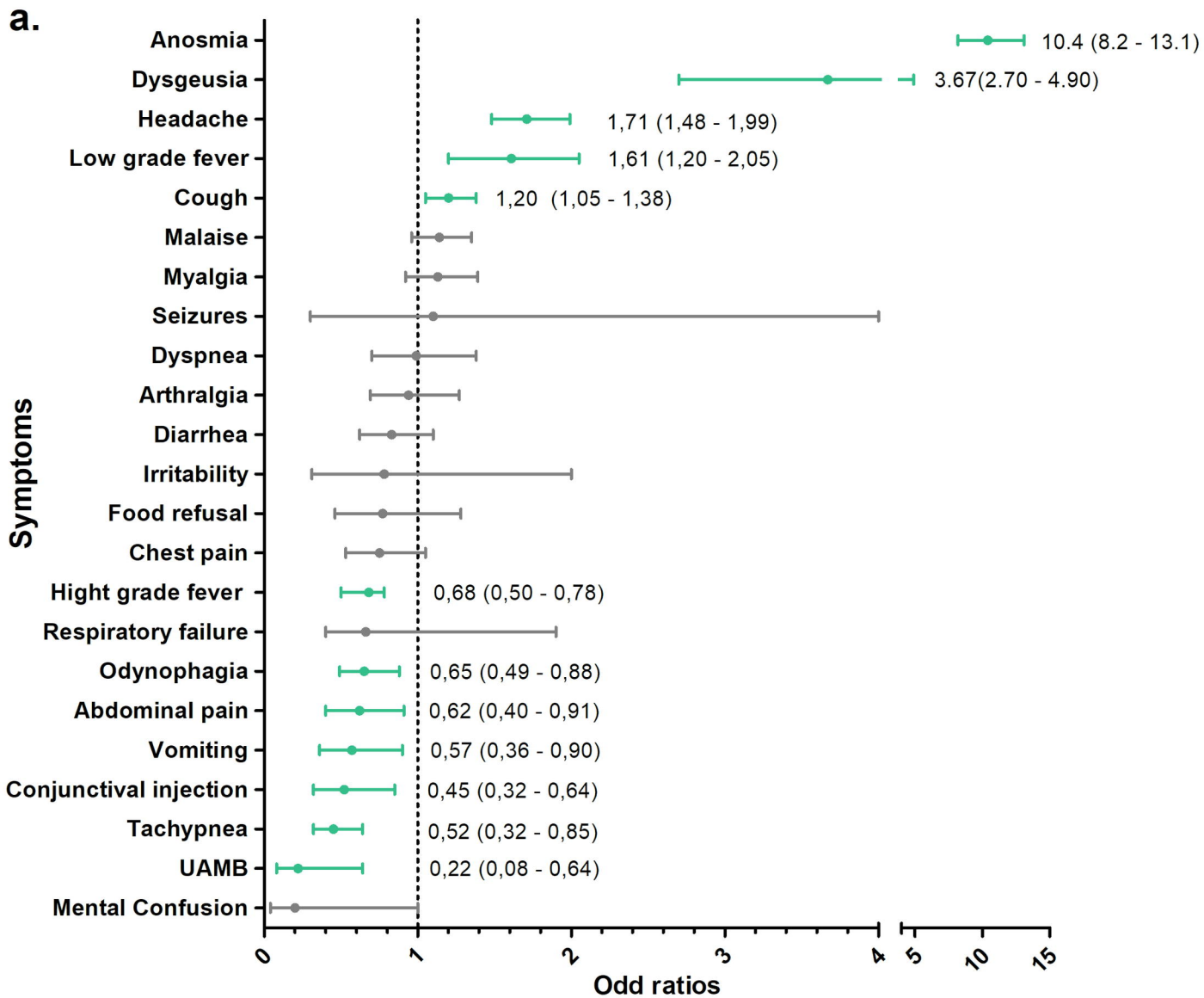


a.

RT-PCR SARS-CoV-2 Positive
RT-PCR SARS-CoV-2 Negative



b.



b.