

Supplementary Information for

High-dimensional mass cytometry analysis of NK cell alterations in Acute Myeloid Leukemia identifies a subgroup with adverse clinical outcome

Anne-Sophie Chretien^{1,2}, Raynier Devillier¹⁻³, Samuel Granjeaud⁴, Charlotte Cordier^{1,2,5}, Clemence Demerle^{1,2}, Nassim Salem^{1,2}, Julia Wlosik^{1,2}, Florence Orlanducci^{1,2}, Emilie Gregori⁶, Magali Paul⁷, Philippe Rochigneux^{1,2,8}, Thomas Pagliardini¹⁻³, Mathieu Morey⁹, Cyril Fauriat^{1,2}, Nicolas Dulphy¹⁰, Antoine Toubert¹⁰, Herve Luche⁶, Marie Malissen^{6,11}, Didier Blaise^{1,3}, Jacques A. Nunès¹, Norbert Vey³, and Daniel Olive^{1,2}.

Corresponding author:

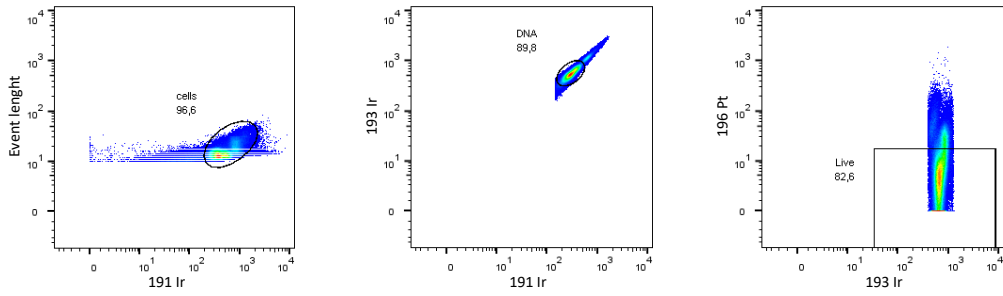
Pr. Daniel Olive

daniel.olive@inserm.fr

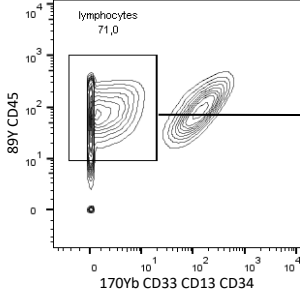
This PDF file includes:

Figures S1 to S5

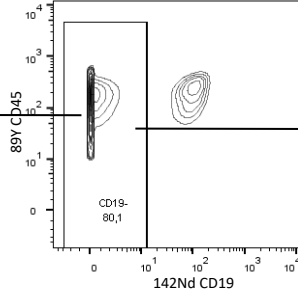
Table S1



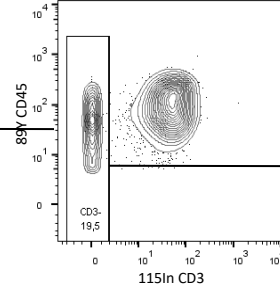
Exclusion of monocytes / blasts



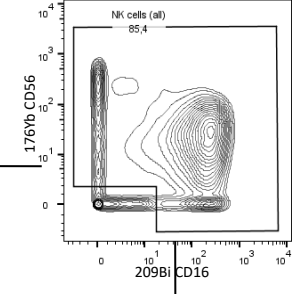
Exclusion of B cells



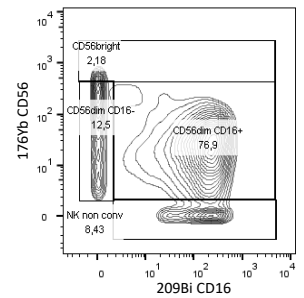
Exclusion of CD3+ cells



Exclusion of CD56⁻CD16⁻ cells

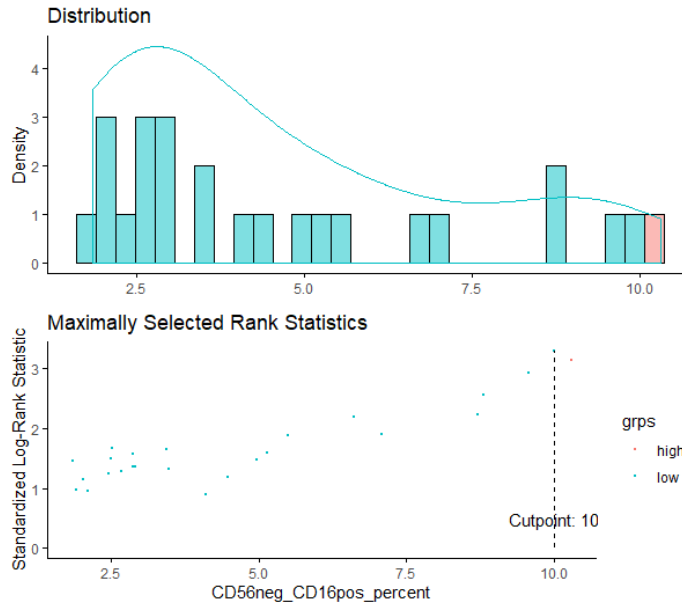


NK cells

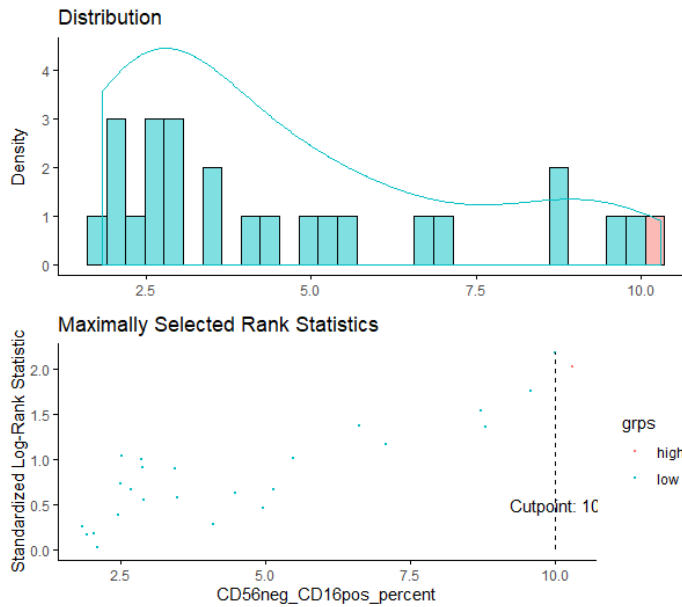


Supplementary Figure 1. Gating strategy. PBMCs from HV and patients with AML were stained with the indicated set of antibodies (see Supplementary Table 1) and analyzed by mass cytometry (CyTOF Helios®). After removal of beads, cells were pre-gated as DNA⁺, cisplatin⁻ cells. Monocytes and leukemic blasts were excluded based on expression of CD13, CD33, and CD34 and on low or absent CD45 expression; B cells and T cells were excluded based on CD19 and CD3 expression, respectively. Four subsets of NK cells were defined based on CD56 and CD16 expression: CD56^{bright} NK cells, CD56^{dim}CD16⁺ NK cells, CD56^{dim}CD16⁻ NK cells, and unconventional CD16⁻CD16⁺ NK cells.

OS

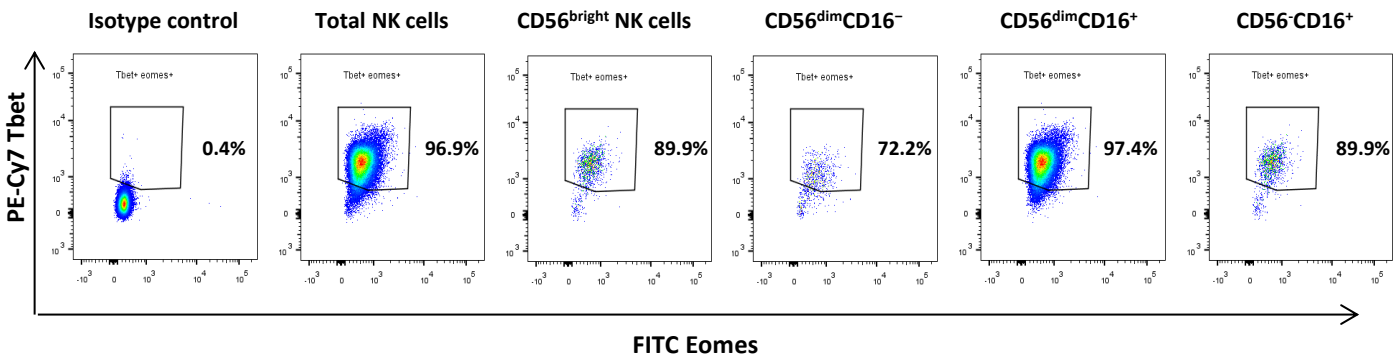
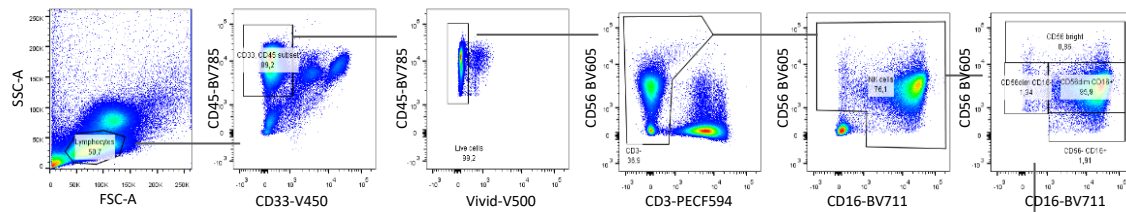


EFS

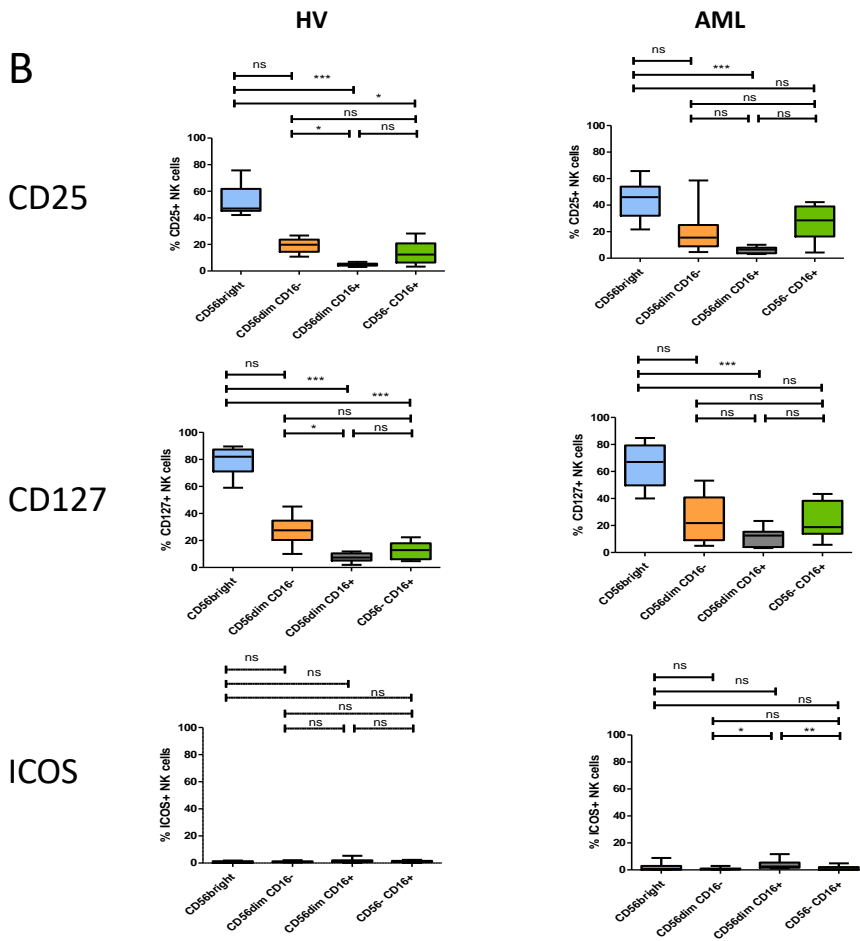


Supplementary Figure 2. Threshold determination for definition of AML subgroups. The optimal cut-points were determined using maximally selected log-rank statistics using the maxstat R package. Maxstat enables identification of, for a given prognostic parameter, the optimal threshold that best discriminates two groups of patients. (<https://cran.r-project.org/web/packages/maxstat/index.html>)

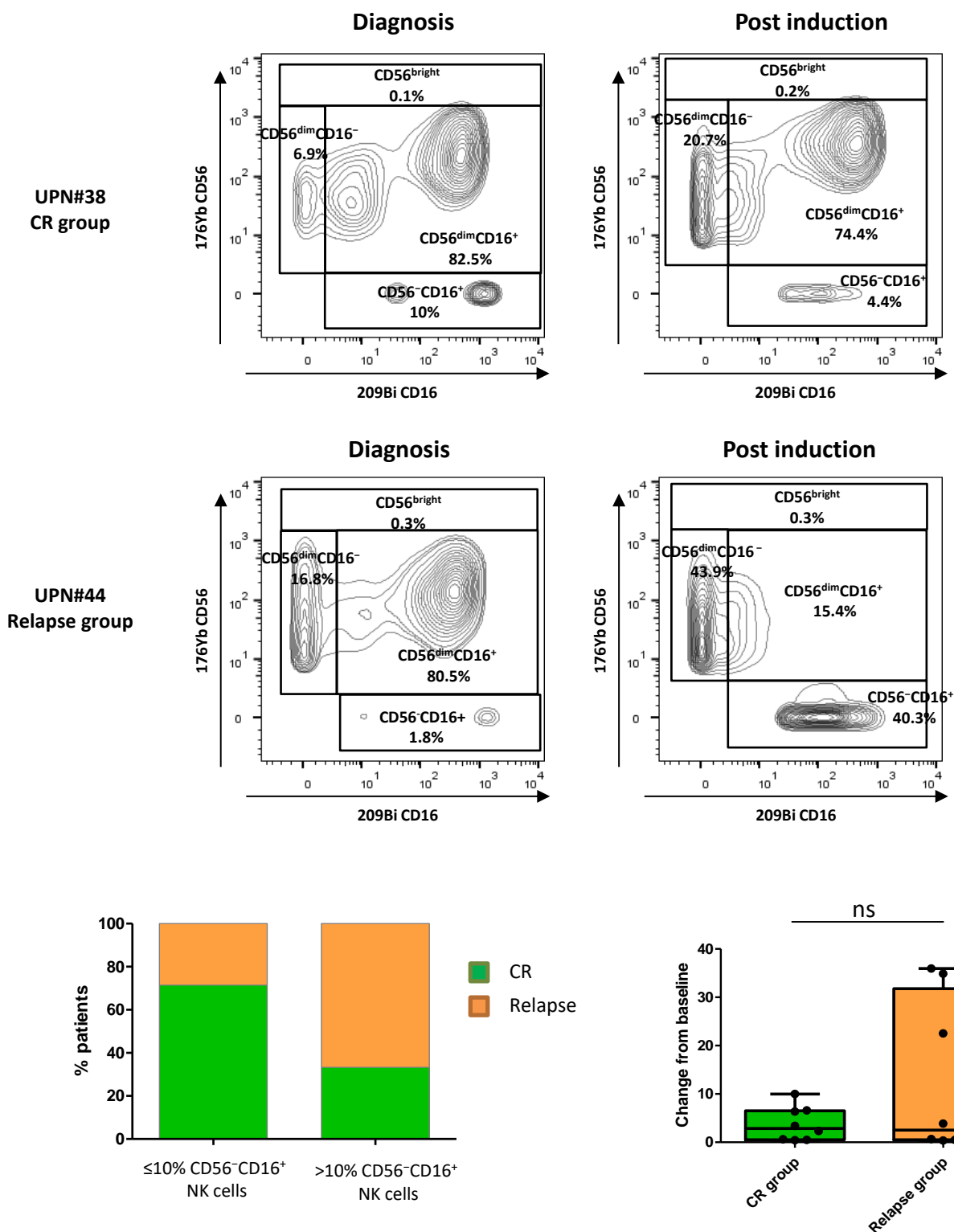
A



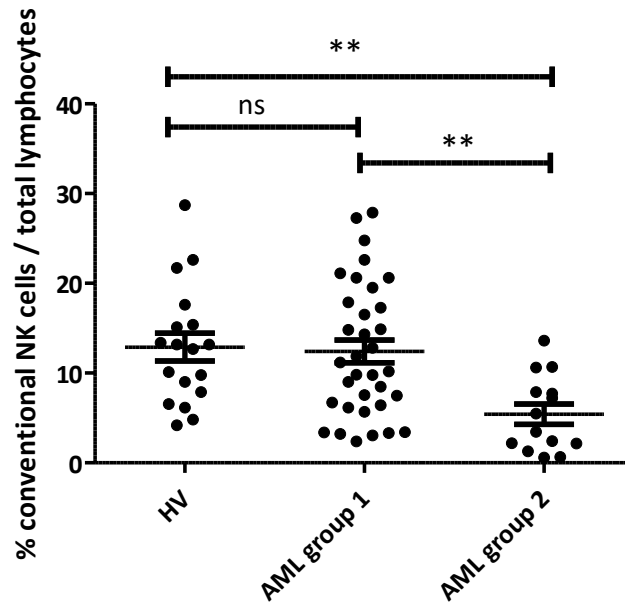
B



Supplementary Figure 3. CD3⁺CD56⁺CD16⁺ cells are not group 1 ILCs. (A) NK cells from HV were analyzed by flow cytometry to assess expression of Tbet and Eomes in the subset of CD56⁺CD16⁺ NK cells. (B) Expression of ILC1 markers (CD25, CD127, and ICOS) was further assessed by mass cytometry in peripheral NK cells from HV and from patients with AML. Differences between clusters were assessed using a Friedman test followed by a Dunn's test.



Supplementary Figure 4. Induction chemotherapy does not restore non-pathological frequency of CD56⁻CD16⁺ NK cells. The frequency of CD56⁻CD16⁺ NK cells was assessed in paired samples from AML patients at diagnosis and 30 to 45 days after induction therapy (n=16). The change from baseline was calculated as the ratio between the frequency of CD56⁻CD16⁺ NK cells at diagnosis and the frequency of CD56⁻CD16⁺ NK cells at complete remission (CR). Raw frequencies and change from baseline were analyzed by subgroups of patients according to clinical outcome. ns, non-significant; UPN, unique patient number.



Supplementary Figure 5. High frequency of CD56⁺CD16⁺ NK cells is associated with a decrease of conventional NK cells. Frequencies of conventional CD3⁺CD56⁺ NK cells were determined using manual gating and compared between healthy volunteers, patients with low frequencies of CD56⁺CD16⁺ NK cells (group 1) and patients with high frequencies of CD56⁺CD16⁺ NK cells (group 2). Results are presented as mean \pm SEM. Data were analyzed using a Kruskal–Wallis test followed by a Dunn’s post-test. **: P<0.01; ns: non-significant.

Supplementary Table 1. Mass cytometry panels

Panel 1

Antigen	Metal/fluorochrome		Company
CD45	89Y	Extracellular	Fluidigm
CD3	115In	Extracellular	CRCM*
TCRVd2	141Pr	Extracellular	Beckman Coulter*
CD19	142Nd	Extracellular	Fluidigm
CD45RA	143Nd	Extracellular	Fluidigm
CD4	145Nd	Extracellular	Fluidigm
CD8a	146Nd	Extracellular	Fluidigm
BCL-2	150Nd	Intracellular	Cell Signaling*
NKG2C	152Sm	Extracellular	Miltenyi
TCRpangd	153Eu	Extracellular	Miltenyi
CD158b1/b2j	154Sm	Extracellular	Beckman Coulter*
CD27	155Gd	Extracellular	Fluidigm
BCL-XI	158Gd	Intracellular	Cell Signaling*
Ki-67	159Tb	Intracellular	BioLegende
NKG2D	160Gd	Extracellular	Beckman Coulter
NKp46	162Dy	Extracellular	Fluidigm
DNAM-1	164Dy	Extracellular	Beckman Coulter*
NKG2A	165Ho	Extracellular	Beckman Coulter*
CD96	166Er	Extracellular	BioLegende
CD158a/h	168Er	Extracellular	Beckman Coulter*
NKp30	169Tm	Extracellular	Beckman Coulter*
CD57	172Yb	Extracellular	Fluidigm
CD56	176Yb	Extracellular	Fluidigm
CD16	209Bi	Extracellular	Fluidigm
CD34	PE/biotinylated	Extracellular	Beckman Coulter*/Sigma*
CD13	PE/biotinylated	Extracellular	BD Biosciences*/Sigma*
CD33	PE/biotinylated	Extracellular	Beckman Coulter*/Sigma*
Anti-PE	156Gd	Extracellular	Fluidigm

Panel 2

Antigen	Metal/fluorochrome		Company
CD45	89Y	Extracellular	Fluidigm
CD3	115In	Extracellular	CRCM*
Ki-67	141Pr	Intracellular	BioLegende
CD45RA	143Nd	Extracellular	Fluidigm
HVEM	144Nd	Extracellular	Fluidigm
CD8a	146Nd	Extracellular	Fluidigm
CD25	149Sm	Extracellular	Fluidigm
OX-40	150Nd	Extracellular	Fluidigm
ICOS	151Eu	Extracellular	Fluidigm
TIM-3	153Eu	Extracellular	Fluidigm
TIGIT	154Sm	Extracellular	Fluidigm
PD-1	155Gd	Extracellular	Fluidigm
PD-L1	156Gd	Extracellular	Fluidigm
4-1BB	158Gd	Extracellular	Fluidigm
CCR7	159Tb	Extracellular	Fluidigm
CD28	160Gd	Extracellular	Fluidigm
CTLA-4	161Dy	Intracellular	Fluidigm
FOXP3	162Dy	Intracellular	Fluidigm
BTLA	163Dy	Extracellular	Fluidigm
CD95	164Dy	Extracellular	Fluidigm
CD127	165Ho	Extracellular	Fluidigm
CD44	166Er	Extracellular	Fluidigm
CD27	167Er	Extracellular	Fluidigm
CD69	168Er	Extracellular	Fluidigm
TCRVd2	169Tm	Extracellular	Fluidigm
DNAM-1	171Yb	Extracellular	Fluidigm
CD57	172Yb	Extracellular	Fluidigm
LAG3	175Lu	Extracellular	Fluidigm
CD56	176Yb	Extracellular	Fluidigm
CD16	209Bi	Extracellular	Fluidigm
CD34	PE	Extracellular	Beckman Coulter*/Sigma*
CD13	PE	Extracellular	BD Biosciences*/Sigma*
CD33	PE	Extracellular	Beckman Coulter*/Sigma*
Anti-PE	156Gd	Extracellular	Fluidigm