

Establishment of National DRL for CT in Hybrid Imaging Studies (The Second Phase of the National NM CT (PET) Dose Audit for Kuwait Population -2019)

**MICHAEL MASOOMI*¹, IMAN AL-SHAMMERI ¹, LATIFAH AL-KANDARI ²,
HANY ELRAHMAN ¹, JEHAN AL-SHAMMARI ³**

¹Nuclear Medicine and Molecular Imaging Unit, Department of Medical Imaging, Adan Hospital, MOH, Kuwait

²Radiology Unit, Department of Medical Imaging, Adan Hospital, MOH, Kuwait

³Department of Nuclear Medicine, Faculty of Medicine, Kuwait University, Kuwait

Participating Centers:

1. Adan Hospital – KW
2. Farwaniya Hospital - KW
3. Al-Jaber Hospital - KW
4. Chest Diseases Hospital –KW
5. Mubarak Hospital -KW
6. Al-Jahra Hospital – KW
7. Kuwait Cancer Control Center – KW
8. Jaber Al Ahmed Molecular Imaging/KFAS – KW

*** Corresponding Author**

Dr Michael Masoomi, FIPEM(UK), MRCP(Lon), SRCS(UK)
Nuclear Medicine &Molecular Imaging Unit, Department of Medical Imaging
Adan Hospital, MOH
46020
Kuwait
Email: masoomim@sky.com
Tel: 00965 51250687

ABSTRACT

DRLs for CT part used in PET/CT examinations are limited. The aim was to execute the second phase of the national DRL for CT part of PET/CT imaging operating in KW, in support of optimisation and dose reduction as imaging technology is advancing. In this multicentre collaborative PET centers (No:8) audit, data collection was restricted to the adult oncology patients due to a limited number of the other studies and also due to the National MOH Ethical Committee recommendation. The CTDIvol, DLP and SL were recorded and the Median, Mean, SD, 75th, 25th percentiles as well as WB effective dose (ED) were calculated. Dose and scan length statistics for HB and WB scans (65% and 35% of total: 309) and the WB+HB presented together with the proposed NDRLs and the Achievable doses. Third quartile DLP (mGy x cm) and CTDIvol (mGy) values for the HB were (537, 5) which were higher than the UK NDRL (400, 4.3) but were lower than the Swiss NDRL (620, 6) and the France NDRL (762, 7.7). Comparatively, the Proposed NDRLs for (WB) were (684, 4.1) which were lower than Swiss National Data (720, 5.0). It is worth noted that, the Swiss had about 5000 (HB) & 706 (WB), the UK had 370 (HB) and France had 1000 (HB) entries. Calculated ED varied from 4.1 to 10.2 mSv, (mean values=6.9 mSv) for HB and from 2.6 to 7 mSv (mean value=4.6 mSv) for WB scans which were lower than the first phase (2018). Although, there was 9.1% improvement in NDRL, but the outcome suggested there is a continuous need for monitoring NDRL.

KEY WORDS: PET/CT, NDRL, CTDvol, DLP, Molecular Imaging

INTRODUCTION

As we stated in the first phase of this study [1], there is an increased global focus on the need to carefully manage radiation exposures from CT imaging, as the doses from the related examinations are in general, higher than those from most other medical x-ray imaging examinations.

Recent development of PET/CT systems has allowed concurrent or with minimum time delay to perform anatomic and functional imaging of organs, which allows better evaluation of disease [2-4]. The CT components of PET/CT systems are equivalent in power output to their stand-alone versions and may be used for diagnostic purposes under appropriate CT technique. In addition to diagnostics acquisition, the application of CT in hybrid PET/CT scanners may serve other specific purposes, including attenuation correction of the PET image data and tissue localization [5]. The CT dose measurement concept is based on the CT dose index (CTDI), which represents the average absorbed dose of irradiation of contiguous slices.

An ^{18}F -FDG PET/CT examination has potential for high patient dose from the combination of the x-rays used to acquire the CT image and the radiotracer administered into the patient to acquire the PET image. The methodology to estimate the radiation exposure of patients receiving ^{18}F -FDG has been well studied and understood [6]. Generally, administered ^{18}F -FDG activities range from 1.25 to 5 MBq/kg, depending on the sensitivity of the PET scanner (2 or 3-dimensional) [7], which equates to a whole-body effective dose of approximately 8.4 mSv for a 70-kg patient who receives an activity concentration of 5 MBq/kg. Including CT as part of a PET/CT examination can raise the total effective dose to as high as approximately 26 mSv [8-11]. However, estimates of PET/CT effective dose are variable and critically depend on an institution's specific CT technique and activity administration protocol [12]. In general, the CT component of a PET/CT examination can contribute more than 50% of the total-examination effective dose.

On contrary to diagnostic CT, published dose reference levels for CT used in hybrid PET/CT examinations and guidance on CT dosimetry metrics in the literature on nuclear medicine practice standards are limited, and many of available reports reference to dedicated diagnostic CT practice standards, which may not be appropriate for CT in PET/CT. Of the limited documentation on CT technique for PET oncology, there is a general acceptance that CT dose is tailored to its purpose in the reconstruction or the interpretation process [12-13]. For example, acquisition protocols may be designed to compensate for the PET temporal resolution [14-15] or collect ultra-low-dose attenuation correction data [16]. There are a limited number of studies investigating the optimisation of CT technique and image quality for diagnostic and oncologic PET/CT. Most of these studies have focused on lowering estimates of effective dose while maintaining high image quality using the Alderson RANDO anthropomorphic phantom (The Phantom Laboratory) [8-9 & 17].

An internationally recognized approach to radiation protection of patients, recommended by the International Commission on Radiological Protection (ICRP), is the establishment and use of diagnostic reference levels (DRLs) which are dosimetric indicators, established from surveys of imaging practice and provide guidance to help manage dose and promote optimization, so that the applied dose is appropriate for a given clinical need. Furthermore, a widely accepted approach to optimization of medical radiation exposures, recommended by the ICRP [18-19] and the International Atomic Energy Agency (IAEA) [20], is the establishment and use of national, regional and local DRLs. Diagnostic reference levels (DRL) of the volumetric CT dose index (CTDI_{vol}) which are levels for Whole-Body/Half – Body CT used in PET/CT examinations are limited [2].

The substantial variations in dose, from imaging procedures, between some health care facilities for the same examination or procedure and similar patient group (adults or children of defined sizes) have been noticed following the related. Such observations indicate the need for standardization of dose and reduction in variation in dose without compromising the clinical purpose of each examination or procedure. Examination-specific or procedure-specific DRLs for various patient groups can provide the stimulus for monitoring practice to promote improvements in patient protection [21].

DRLs should be set for representative examinations or procedures performed in the local area, country or region where they are applied. National DRLs (NDRLs) should be set on the basis of wide scale surveys of the median doses representing typical practice for a patient group (e.g. adults or children of different sizes) at a range of representative healthcare facilities for a specific type of examination or procedure. NDRLs are commonly set at the third quartile values (the values that splits off the highest 25% of data from the remaining 75%) of these national distributions [22]. As such, NDRLs are not optimum doses, but nevertheless they are helpful in identifying potentially unusual practice, where median doses are among the highest 25% of the national dose distribution. DRLs can be also established for a region within the country or, in some cases, regions of several countries. They can be also used to set updated values for new imaging technologies that may allow lower dose levels to be achieved. Where no national or regional DRLs are available, DRLs can be set based on local dosimetry or practice data, or can be based on published values that are appropriate for the local circumstances. Clinical protocols for performing a particular examination or procedure should be reviewed if the comparison shows that the facility's typical dose exceeds the DRL, or that the facility's typical dose is substantially below the DRL and it is evident that the exposures are not producing images of diagnostic usefulness or are not yielding the expected medical benefit to the patient. The resulting actions aimed at improving the optimization of protection and safety, which usually, but not necessarily, result in lower typical doses of the facilities for the examinations or the procedures. The examinations or procedures included should represent at least the most frequent examinations performed in the region for which dose assessment is practicable, with priority given to those that result in the highest patient radiation dose.

There is no preferred custodian: what is important is that a patient dose database (for DRLs) is established and maintained, DRL values are set, disseminated through the regulatory processes, and a process for periodic review is established. Fast moving technological developments in medical imaging are providing new opportunities to automatically track and benchmark patient doses. Early evidence in some countries with more advanced electronic systems is very promising.

In this study, DRLs for each center was calculated based on the local practice and then a national DRL (NDRL) for oncology examinations (majority of studies) and patients group were proposed adopting the third quartile value of the volume computed tomography dose index (CTDIvol) and dose length product (DLP) following the wide scale national surveys according to the IPEM-UK frame work and the ICRP recommendation for the state of Kuwait.

A comparative study to this project were a national survey conducted by the UK (47 PET/CT centers), Swiss (16 PET/CT centers) and France (56 PET/ centers) on PET/CT oncologic procedures.

METHODOLOGY

In this continuing study (second phase) that was a multicentre collaborative research, we collected a multiple data from CT of PET/CT hybrid imaging system (that were in current practice in Kuwait Hospitals) and analysed the results for setting up a NDRL base line for the State of Kuwait. The data collection was restricted to adult patients as per the Kuwait Ethical Committee recommendation. The Methodology, based on the UK - IPEM was adopted as per the first year audit to suit the proposed study involving the KW NM Clinical Centers. The studies were carried out with participation of 8 PET/CT centers in the state of Kuwait. WE managed to collect 309 patient data for CT part of PET/CT centers in comparison to 197 patients for the first year. The focus was on all PET/CT imaging systems and procedures regardless of their locations and numbers of the systems availability in one center.

To reduce the influence from centers that provided a significantly large number of entries compared to others, the limiting data contribution from each center was set to a maximum of 40 entries. Majority of PET/CT imagings were dedicated to the oncology scan and the collected data were based mostly on this type of imaging and the other isolated studies including heart and brain were excluded. In addition, all topograms (scanograms) and monitoring steps used in contrast-enhanced CT acquisitions (if any) were excluded from the analysis. All proposed $CTDI_{vol}$ were approximated to the first decimal place and the DLP to the nearest whole number.

Initially, a body phantom study was performed on a local GE PET/CT 710 to determine the $CTDI_{vol}$ and DLP for an anthropomorphic phantom, and to assess feasibility of recording preliminary data for the above. The priority was to estimate typical patient dose quantities for the common present practice on adult patients according to the following steps:

- To record displayed values of radiation dose quantity for maximum samples of 40 typical adult patients per center (i.e. 309 sample data for all the centers), undergoing procedures for common clinical indications. For CT part, the clinical purpose of exposure, attenuation correction (AC), localization or diagnosis for the PET/CT imaging centers were recorded for Whole body and Half Body.
- To calculate, for each type of examination, the median values of dose quantities (e.g. $CTDI_{vol}$ and DLP for CT); which were the typical dose levels (but were not the local DRLs that are set for a group of imaging systems or a group of hospitals).
- To compare the typical dose levels (median values) with the published DRLs for a similar practice in the absence of local or national DRLs (UK, Swiss and France), in order to provide a broad indication of our relative performance and urgency of need for improvement in our imaging technique. A proposed national DRL for Kuwait was then suggested.
- The effective dose for the oncology examination at each center, using CT part of PET/CT was calculated based on the measured dose values.
- The Sante DICOM viewer was used to retrieve all the listed parameters in the data sheets (Appendix 1).

Statistical analysis was performed on the data collected for the oncology protocol from the participating centers, in respect of volumetric CT dose index ($CTDI_{vol}$), dose length product (DLP) and scan length (SL), taking into consideration the intended aim (attenuation correction and localization) declared by each nuclear medicine center. For the each of these metrics, the number of entries, median, mean, standard deviation, minimum and maximum values and 75th & 25th percentiles of the combined were calculated. Rounded third quartile

values of CTDIvol and DLP were used to produce suggested NDRLs, whereas rounded first quartile values were used to produce achievable doses as a further aid to optimization [22-23]. In order to provide verification, the analyses were performed independently. Once the data were analyzed, NDRLs representing the 75th% percentile of the data distribution, were proposed in addition to achievable dose (defined as the 25th% percentile of the data distribution) for each protocol. The ICRP suggests taking the third quartile of the distribution of individual median values as the DRL. However, in this study, we present both mean and median for DRL to accommodate suggestions by the various groups, including the UK, Swiss and France national surveys. All the 8 centers in KW, except one, used Automatic Exposure Control (AEC) that modulates radiation exposure automatically and is widely used for optimization of radiation dose in CT [24-26].

We also estimated the effective dose (ED) as a prerequisite for optimization and monitoring of radiation exposure of the CT part of PET/CT facilities. ED is often estimated as a product of the DLP value and a conversion factor selected according to the imaging region [27-29]. CTDIvol is calculated on the basis of radiation dose measured in imaging 16-cm and 32-cm CT dosimetry phantoms for head-mode and body-mode imaging, respectively. When using the same scanner parameters, CTDIvol, and consequently DLP, is larger for a 16-cm phantom than for a 32-cm phantom because of less absorption within a smaller phantom. The conversion factor from DLP to ED depends on the location, size, and radiosensitivity of organs and tissues exposed to radiation and is lower for the head than for the trunk. For 18F-FDG PET/CT oncology applications, CT images are usually acquired from the head to the proximal thigh sequentially, and a single DLP value, representing half body radiation exposure, is provided on a scanner.

It is also important to note that whereas the fundamental concept of ED has not changed with new ICRP recommendations, important aspects of its calculation have been updated, leading in particular to changes in values of dose per unit exposure since the previous UK CT survey for 2003. Furthermore, ICRP has now recommended the application of specific reference persons for the calculation of the organ doses necessary for the estimation of ED using Monte Carlo techniques to simulate radiation transport in computational anthropomorphic phantoms. The ICRP adult male (AM) and adult female (AF) voxel phantoms will be adopted in future ICRP publications in place of the physical or mathematical phantoms used previously for the calculation of ED.

To assess the radiation dose from the CT component of the examination, we used dose-length product (DLP) values from the scanner-generated dose reports and a conversion factor—that is, the region-specific normalized effective dose per DLP ($\text{mSv} \times \text{mGy}^{-1} \times \text{cm}^{-1}$) [30]. Effective dose (*ED*) was then estimated as the product of the *DLP* and the corresponding conversion factor (*k*): $ED \text{ (mSv)} \approx k \times DLP$.

For the half body and whole body scan, we used a *k* value of $0.015 \text{ mSv} \times \text{mGy}^{-1} \times \text{cm}^{-1}$ and $0.0093 \text{ mSv} \times \text{mGy}^{-1} \times \text{cm}^{-1}$ respectively [31-32]. The coefficients of ED/DLP for examinations were for adult patients and were calculated as mean values, over a range of CT scanner models operating at medium applied potentials (principally 120 kVp), on the basis of ICRP 103 tissue weighting factors and ICRP 110 voxel phantoms (as an average for AM and AF) [33].

For the calculation of displaying CTDIvol and DLP; GE scanners (GE, Milwaukee, Wisconsin, USA) using 32 cm body CTDI phantom on all the systems in this study. Patients were not categorized by age, sex, or weight because the scanning protocol was used with the automatic exposure control (AEC), which accounted for differences in patient size.

All PET/CT centers in this study, except one, used the Adaptive Statistical Iterative Reconstruction (ASiR) that is the first commercially available reconstruction algorithm that provided significant dose benefit for CT imaging. ASiR has been accepted by numerous sites as the standard-of-care protocol for a variety of applications and has potential to achieve significant reductions in patient radiation dose in CT exams while achieving image reconstruction speed similar to that of conventional analytical reconstruction using filtered back projection (FBP).

International comparison

The “mean and median” values of dose quantities (CTDI_{vol} and DLP for CT) for data, collected from the Kuwait multiple centers to establish whether they are above or below the published DRL. The “mean” values had been recommended earlier, but the recent recommendations are favoring median values [34-36].

A similar work by the CT working groups in the UK, Swiss and France have recently been performed and the results have been published [37-39]. Some of the protocols exercised in Kuwait are common and thus DRL’s can be directly compared. For comparison purposes, CTDI_{vol} was the most relevant metric, whereas DLP depends directly on the scan length applied at individual centers.

RESULTS AND DISCUSSION

This study has been able to generate data from a truly representative cross section of Kuwait PET/CT practice that is mostly exercised for oncology examinations. The data from other studies, including heart and brain were limited, to provide a statically acceptable and accurate results and as such were not included in this study. These studies may be considered in the future audit.

The half-body (chest, abdomen and pelvis) fluorine-18-fluorodeoxyglucose (18F-FDG) oncology imaging comprised the majority of PET/CT imaging procedures performed in PET/CT centers in Kuwait (65% of total collected data for 2019 verses 53% for the earlier audit in 2018), though there was much variation in half body studies in the centers. The rest of PET/CT studies (35% in 2019, verses 47% in 2018) performed as the whole body examination (head to toe) using F18-FDG or F18-NAF.

All the participating centers, except one, used AEC and ASiR in acquiring CT part of the PET / CT examination. Minimum and maximum range of mA for setting AEC were very much variable (14-209 mA & 81-400 mA respectively) for both HB and WB oncology PET/CT examinations. One center who did not use AER, had set the mA low, in the range of 50-83 mA for PET/CT studies, that could be due to intention to use the CT scan for the purpose of attenuation correction at the foremost. There was not much variation in setting CT tube voltage (i.e. 120kV) for the PET/CT examinations across the 8 centers and in particular all centers adopted the stated value.

Maximum variation for the “mean” SL value (cm) between 8 PET/CT centers was 9% for HB and 11% for WB PET/CT examinations according to the **Tables [1-2]** data. The “mean” and “median” SL values (cm) for the HB scan were (106, 106) and for the WB were (168, 168) which appeared to be higher than the UK HB (95, 94) and the Swiss HB (94, 101) and the Swiss WB (119, 128). It is worth noted that the HB was defined to include chest-abdomen-pelvis scan length and the WB scan length was referred to head to toe scan for KW protocols

that could be different in setting SL from UK and Swiss protocol point of views. The Swiss had only 6 entries for WB scan whereas KW had 200 entries. The average male and female lengths for UK and Swiss national were not known.

Summary of dose and scan length statistics for the half body, whole body and the combined scan length are presented in **Tables [1-2]**, whereas **Table [3]** presents the same data for the combined half and total body examinations.

In all cases, the CT data were used for AC and localization, but acquisition parameters and patient doses for the 8 PET/CT center varied, with a maximum of two and half fold variation in the dose - length product (DLP) between centers. The third quartile of CTDIvol and DLP values were used to propose the local DRL (LDRL) and the first quartile of CTDIvol and DLP values were calculated to suggest the achievable LDRL for each participating center accordingly [**Tables 4-6**]. There was a maximum of twofold variation in LDRL for CTDIvol and DLP between seven centers [Tables 4-6]. The proposed national diagnostic reference level (NDRL) and achievable DRL (based on the median and mean values of CTDIvol and DLP) for HB, WB and HB+WB for the oncology examinations were calculated and presented in **Tables [7-8]**.

Third quartile DLP (mGy x cm) and CTDIvol (mGy) values (537, 5) related to the Kuwait HB PET/CT scans (for setting NDRL) were higher than the current UK NDRL (400, 4.3) but lower than the Swiss National NDRL (620, 6) and the France National NDRL (762, 7.7). Comparatively, the Proposed NDRLs for (WB) was (684, 4.1) which was lower than Swiss National Data (720, 5.0). The Kuwait results were in reasonable agreement for the second consecutive year with the centers having 200 (HB) and 109 (WB) entries, where Swiss had about 5000 (HB) & 706 (WB), the UK had 370 (HB) and France had 1000 (HB) entries [**Tables 9-10**]. The calculated ED varied from 4.1 to 10.2 mSv, with a mean value equal to 6.9 mSv, for HB and from 2.6 to 7 mSv, with a mean value equal to 4.6 mSv, for WB scans [**Table 11**].

Table 1: Summary statistics for the distribution of the scanner volume computed tomography dose index and dose-length product for the protocol list (HB) of each centre using PET/CT.

Center	Protocol [Use: AC-L]	CTDI _{vol} [mGy]					DLP [mGy x cm]					Scan Length [cm]				
		Median	Mean	STD	Min	Max	Median	Mean	STD	Min	Max	Median	Mean	STD	Min	Max
1	PET Oncology [HB]: 25N	4.0	4	1.0	1.6	7.9	448	432	141	125	908	109	107	17	74	135
2	PET Oncology [HB]: 25N	4.5	5	1.0	3.7	8.4	513	530	101	387	969	109	107	5	98	121
3	PET Oncology [HB]: 29N	5.5	5	1.9	1.6	7.8	516	560	225	163	905	98	103	6	97	121
4	PET Oncology [HB]: 18N	6.0	6	1.6	2.7	9.0	678	699	217	301	1125	109	112	11	97	133
5	PET Oncology [HB]: 28N	4.6	5	1.4	3.3	8.4	483	523	140	374	868	97	102	8	97	135
6	PET Oncology [HB]: 24N	2.9	3	0.5	1.8	3.1	314	299	63	170	388	110	111	13	66	130
7	PET Oncology [HB]: 32N	2.6	3	0.8	1.4	4.6	273	286	82	144	472	98	102	8	86	130
8	PET Oncology [HB]: 19N	4.0	4	1.3	2.4	7.0	441	452	143	242	718	102	107	7	102	126

AC- Attenuation Correction, L- Localization, HB – Half Body, N – Number of entry, CTDI_{vol} – CT Dose Volume, DLP – Dose Length Product

Table 2: Summary statistics for the distribution of the scanner volume computed tomography dose index and dose-length product for the protocol list (WB) of each centre using PET/CT.

Center	Protocol [Use: AC-L]	CTDI _{vol} [mGy]					DLP [mGy x cm]					Scan Length [cm]				
		Median	Mean	STD	Min	Max	Median	Mean	STD	Min	Max	Median	Mean	STD	Min	Max
1	PET Oncology [WB]: 15N	2.6	2.8	0.6	1.8	3.8	462	475	119	272	664	168	169	12	135	180
2	PET Oncology [WB]: 6N	3.0	2.9	0.6	2.3	3.5	432	441	157	101	611	168	166	8	156	180
3	PET Oncology [WB]: 11N	2.8	4.2	2.2	2.2	8.7	474	691	364	385	1501	173	171	10	156	180
4	PET Oncology [WB]: 22N	4.5	4.8	2.0	1.3	9.0	758	817	342	227	1657	168	166	9	156	180
5	PET Oncology [WB]: 12N	3.7	3.9	1.4	2.4	6.1	607	664	243	424	1108	168	171	7	156	180
6	PET Oncology [WB]: 14N	2.7	2.6	0.4	1.8	3.1	460	445	85	270	558	170	168	19	110	186
7	PET Oncology [WB]: 8N	3.0	3.0	1.1	1.4	5.0	277	329	133	144	666	160	158	23	109	185
8	PET Oncology [WB]: 21N	3.2	3.6	1.2	2.0	7.0	512	531	159	242	957	184	178	8	161	185

AC- Attenuation Correction, L- Localization, HB – Half Body, N – Number of entry , CTDI_{vol} – CT Dose Volume, DLP – Dose Length Product

Table 3: Summary statistics for the distribution of the scanner volume computed tomography dose index and dose-length product for the protocol list (WB+HB) of each centre using PET/CT.

Center	Protocol [Use: AC&L]	CTDI _{vol} [mGy]					DLP [mGy x cm]					Scan Length [cm]				
		Median	Mean	STD	Min	Max	Median	Mean	STD	Min	Max	Median	Mean	STD	Min	Max
1	PET Oncology [WB+HB]: 40N	3.6	3.6	1.1	1.6	7.9	453	448	103	125	908	125	130	34	74	180
2	PET Oncology [WB+HB]:31N	4.4	4.4	1.2	2.3	8.4	513	510	122	101	969	109	118	24	98	180
3	PET Oncology [WB+HB]:40N	4.7	5.0	2.1	1.6	8.7	506	596	277	163	1501	109	122	31	97	180
4	PET Oncology [WB+HB]:40N	4.8	5.3	1.9	1.3	9.0	711	764	299	227	1657	156	141	28	97	180
5	PET Oncology [WB+HB]:40N	4.1	4.6	1.5	2.4	8.4	493	568	191	374	1108	109	123	33	97	180
6	PET Oncology [WB+HB]:38N	2.9	2.6	0.5	1.8	3.1	339	353	101	170	558	115	131	31	66	186
7	PET Oncology [WB+HB]:40N	2.7	2.7	0.9	1.4	5.0	277	306	110	144	666	99	113	26	86	185
8	PET Oncology [WB+HB]:40N	3.4	3.8	1.3	2.0	7.0	490	496	157	242	957	161	144	36	102	185

AC- Attenuation Correction, L- Localization, TB – Total Body, HB – Half Body, N – Number of entry, CTDI_{vol} – CT Dose Volume, DLP – Dose Length Product

Table 4: Proposed and achievable LDRL for AC and Localization product for the clinical NM examination protocol (HB) at each centre using PET/CT.

Center	Protocol [Use: AC&L]	Proposed LDRL [75th%]		Achievable DRL [25th%]	
		CTDIvol [mGy]	DLP [mGy x cm]	CTDIvol [mGy]	DLP [mGy x cm]
1	PET Oncology [HB] : 25N	4.5	483	3.6	366
2	PET Oncology [HB]: 25N	4.8	556	4.4	493
3	PET Oncology [HB]: 29N	7.1	778	3.8	368
4	PET Oncology [HB]: 18N	7.4	872	4.7	573
5	PET Oncology [HB]: 28N	4.9	520	4.0	433
6	PET Oncology [HB]: 24N	2.9	339	2.4	256
7	PET Oncology [HB]: 32N	3.0	316	2.1	223
8	PET Oncology [HB]: 19N	5.0	507	3.3	349

AC- Attenuation Correction, L- Localization, HB – Half Body, CTDIvol – CT Dose Volume, DLP – Dose Length Product, LDRL – Local Dose reference Level, DLP – Dose Reference Level

Table 5: Proposed and achievable LDRL for AC and Localization product for the clinical NM examination protocol (WB) at each centre using PET/CT.

Center	Protocol [Use: AC&L]	Proposed LDRL [75th%]		Achievable DRL [25th%]	
		CTDIvol [mGy]	DLP [mGy x cm]	CTDIvol [mGy]	DLP [mGy x cm]
1	PET Oncology [WB] : 15N	3.2	572	2.4	398
2	PET Oncology [WB]: 6N	3.5	556	2.4	417
3	PET Oncology [WB]: 11N	5.5	896	2.5	421
4	PET Oncology [WB]: 22N	5.1	866	3.7	651
5	PET Oncology [WB]: 12N	5.0	693	2.5	463
6	PET Oncology [WB]: 14N	2.9	516	2.4	406
7	PET Oncology [WB]: 8N	3.4	418	2.2	229
8	PET Oncology [WB]: 21N	4.3	585	2.8	423

AC- Attenuation Correction, L- Localization, HB – Half Body, CTDIvol – CT Dose Volume, DLP – Dose Length Product, LDRL – Local Dose reference Level, DLP – Dose Reference Level

Table 6: Proposed and achievable LDRL for AC and Localization product for the clinical NM examination protocol (WB+HB) at each centre using PET/CT.

Center	Protocol [Use: AC&L]	Proposed LDRL [75th%]		Achievable DRL [25th%]	
		CTDIvol [mGy]	DLP [mGy xCm]	CTDIvol [mGy]	DLP [mGy xCm]
1	PET Oncology [WB+HB]: 40N	4.2	520	2.9	382
2	PET Oncology [WB+HB]:31N	4.8	556	4.1	471
3	PET Oncology [WB+HB]:40N	7.0	792	2.9	406
4	PET Oncology [WB+HB]:40N	6.9	886	4.2	601
5	PET Oncology [WB+HB]:40N	5.0	607	3.8	448
6	PET Oncology [WB+HB]:38N	2.9	417	2.4	280
7	PET Oncology [WB+HB]:40N	3.1	366	2.1	223
8	PET Oncology [WB+HB]:40N	4.4	571	3.0	389

AC- Attenuation Correction, L- Localization, HB – Half Body, TB – Total Body, CTDIvol – CT Dose Volume, DLP – Dose Length Product
LDRL – Local Dose reference Level, DLP – Dose Reference Level

Table 7: Proposed and achievable NDRL for AC and Localization product for the suggested clinical NM protocols using PET/CT:
(Based on Mean Value).

Center	Protocol [Use: AC&L]	Proposed NDRL [75th%]		Achievable DRL [25th%]	
		CTDIvol [mGy]	DLP [mGy x Cm]	CTDIvol [mGy]	DLP [mGy x Cm]
1	PET Oncology [HB]:200N	5	537	3.8	398
2	PET Oncology [WB]:109N	4.1	684	2.9	444
3	PET Oncology [WB +HB]:309N	4.7	575	3.4	424

AC- Attenuation Correction, L- Localization, HB – Half Body, CTDIvol – CT Dose Volume, DLP – Dose Length Product, NDRL – National Diagnostic Reference Level, DLP – Dose Reference Level

Table 8: Proposed and achievable NDRL for AC and Localization product for the suggested clinical NM protocols using PET/CT:
(Based on Median Value).

Center	Protocol [Use: AC&L]	Proposed NDRL [75th%]		Achievable DRL [25th%]	
		CTDvol [mGy]	DLP [mGy x Cm]	CTDvol [mGy]	DLP [mGy x Cm]
1	PET Oncology [HB]:200N	4.8	514	3.7	409
2	PET Oncology [WB]:109N	3.6	536	2.7	444
3	PET Oncology [WB +HB]:309N	4.5	507	3.3	424

AC- Attenuation Correction, L- Localization, HB – Half Body, CTDIvol – CT Dose Volume, DLP – Dose Length Product, NDRL – National Diagnostic Reference Level, DLP – Dose Reference Level

Table 9: Comparison of Proposed NDRL for AC and Localization product for the suggested clinical NM protocols using PET/CT:
(Based on Mean Values).

Center	Protocol [Use: AC&L]	UK Proposed NDRL		SWISS Proposed NDRL		FRANCE Proposed NDRL		KUWAIT Proposed NDRL	
		CTDIvol [mGy]	DLP [mGy x Cm]	CTDIvol [mGy]	DLP [mGy x Cm]	CTDIvol [mGy]	DLP [mGy x Cm]	CTDIvol [mGy]	DLP [mGy x Cm]
1	PET Oncology [HB]:200N	4.3	400	6.0	620	6.6	628	5	537
2	PET Oncology [WB]:109N			5.0	720	7.7	762	4.1	684
3	PET Oncology [WB +HB]:309N	X	X	X	X	X	X	4.7	575

AC- Attenuation Correction, L- Localization, HB – Half Body, CTDvol – CT Dose Volume, DLP – Dose Length Product, NDRL – National Diagnostic Reference Level, DLP – Dose Reference Level

Table 10: Comparison of Proposed NDRL for AC and Localization product for the suggested clinical NM protocol using PET/CT:
(Based on Median Values: KW only).

Center	Protocol [Use: AC&L]	UK Proposed NDRL		SWISS Proposed NDRL		FRANCE Proposed NDRL		KKUWAIT Proposed NDRL	
		CTDIvol [mGy]	DLP [mGy x Cm]	CTDIvol [mGy]	DLP [mGy x Cm]	CTDIvol [mGy]	DLP [mGy x Cm]	CTDIvol [mGy]	DLP [mGy x Cm]
1	PET Oncology [HB]:200N	4.3	400	6.0	620	6.6	628	4.8	514
2	PET Oncology [WB]:109N			5.0	720	7.7	762	3.6	536
3	PET Oncology [WB +HB]:309N	X	X	x	x	X	X	4.5	507

AC- Attenuation Correction, L- Localization, HB – Half Body, CTDIvol – CT Dose Volume, DLP – Dose Length Product, NDRL – National Diagnostic Reference Level, DLP – Dose Reference Level

Table 11: Comparison of CT effective dose as a result of AC and Localization product for the suggested clinical NM protocol using PET/CT: The recommended published conversion factors; K=0.015 (mSv/mGy/cm) & K=0.0093 (mSv/mGy/cm).

Center	Protocol [Use: AC-L]	ED [mSv] Half Body [HB] K= 0.015 mSv/mGy/cm		ED [mSv] Whole Body [WB] K= 0.0093 mSv/mGy/cm		ED [mSv] Scan Length [WB+HB] K= [0.015+0.0093] mSv/mGy/cm			
		Median	Mean	Median	Mean	Median	Mean		
		1	PET Oncology [HB] : 25N	6.7	6.5	PET Oncology [WB] : 15N	4.3	4.4	PET Oncology [WB+HB]: 40N
2	PET Oncology [HB]: 25N	7.7	7.9	PET Oncology [WB]: 6N	4.0	4.1	PET Oncology [WB+HB]:31N	5.9	6.0
3	PET Oncology [HB]: 29N	7.7	8.4	PET Oncology [WB]: 11N	4.4	6.4	PET Oncology [WB+HB]:40N	6.1	7.4
4	PET Oncology [HB]: 18N	10.2	10.5	PET Oncology [WB]: 22N	7.0	7.6	PET Oncology [WB+HB]:40N	8.6	9.1
5	PET Oncology [HB]: 28N	7.2	7.8	PET Oncology [WB]: 12N	5.6	6.2	PET Oncology [WB+HB]:40N	6.4	7.0
6	PET Oncology [HB]: 24N	4.7	4.5	PET Oncology [WB]: 14N	4.3	4.1	PET Oncology [WB+HB]:38N	4.5	4.3
7	PET Oncology [HB]: 32N	4.1	4.3	PET Oncology [WB]: 8N	2.6	3.1	PET Oncology [WB+HB]:40N	3.4	3.7
8	PET Oncology [HB]: 19N	6.6	6.8	PET Oncology [WB]: 21N	4.8	4.9	PET Oncology [WB+HB]:40N	5.7	5.9

AC- Attenuation Correction, L- Localization, HB – Half Body, N – Number of entry , CTDivol – CT Dose Volume, DLP – Dose Length Product
 NDRL – National Diagnostic Reference Level, DLP – Dose Reference Level, K= Conversion Factor

Seven out of eight centers had accommodated Discovery™ GE PET/CT with Optima™, 64 slices CT part, including two digital GE PET/CT. The remaining scanner was a Philips Gemini PET/CT. Seven out of eight sites were reported using automatic current modulation (AEC) which goal is to automate the adjustment of tube current (mA) along the way, based on patient thickness and the radiation attenuation of tissues, patient length and the asymmetry along the patient's body.

Data presented in **Figures [1,3 & 5]** show the range of doses (75th percentile CTDIvol) for the proposed HB, WB and HB+WB oncology examinations related to AC & Localization clinical purposes. Similarly, **Figures [2,4 & 6]** are presenting variations of DLP (75th percentile) for each NM center for HB, WB and WB+HB in relation to the proposed DLP for each NM PET/CT center. The dose results (CTDIvol) for 6 centers appeared to be less for the WB oncology examinations. The dose results (CTDIvol) for 6 centers appeared to be less than the proposed NDRL for HB and the WB oncology examinations. It is worth noted that two of the centers had accommodated a state of art digital PET/CT which has elevated technology other than the rest of PET/CT respectively and one center had accommodated a Philips PET/CT of an older model, setting a low mA for purpose of attenuation correction primarily, and with no use of AEC or ASiR.

The ratio of maximum to minimum mean doses for HB and WB scans between different centers for the same clinical studies varied between 2.3-7.3 for HB and 2.1-7.3 for WB. **Figures [7-8]** are presenting trends of CTDIvol and ED variations over 2018 and 2019 with reference to the NDRLs and comparatively. The NDRL for the second phase study (2019) showed an improvement of about 9.1% over the 2018 NDRL result. For 2019, the DRL % deviations from the NDRL varied from [-4% to +40%] for each center.

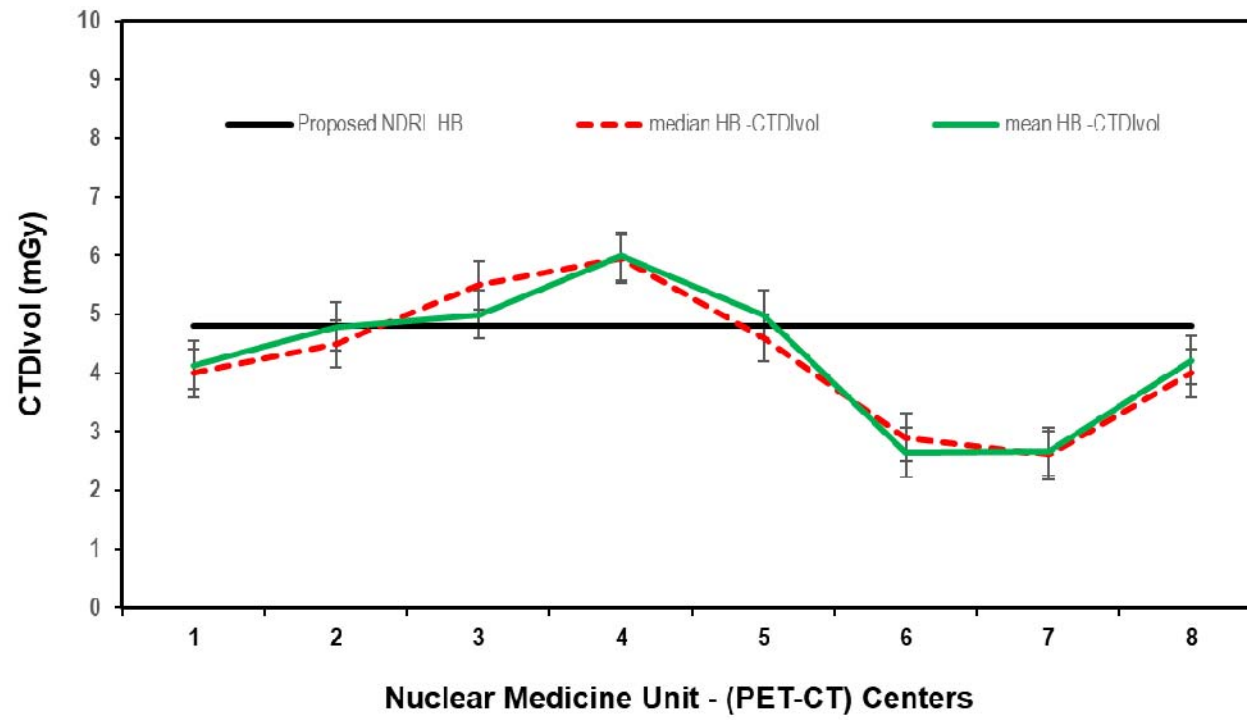


Figure 1: CTDIvol (75th percentile) for each PET-CT unit, compared to the proposed NDRL for HB data

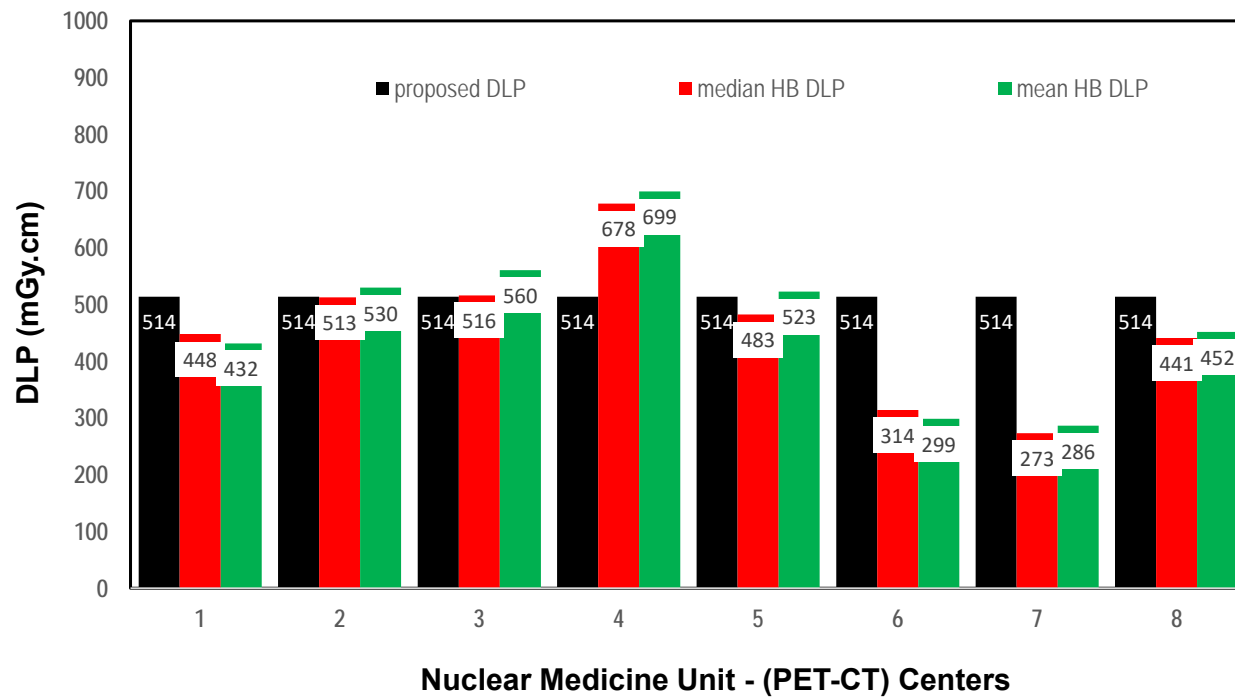


Figure 2 DLP (75th percentile) for each PET-CT unit, compared to the proposed NDLP for HB data.

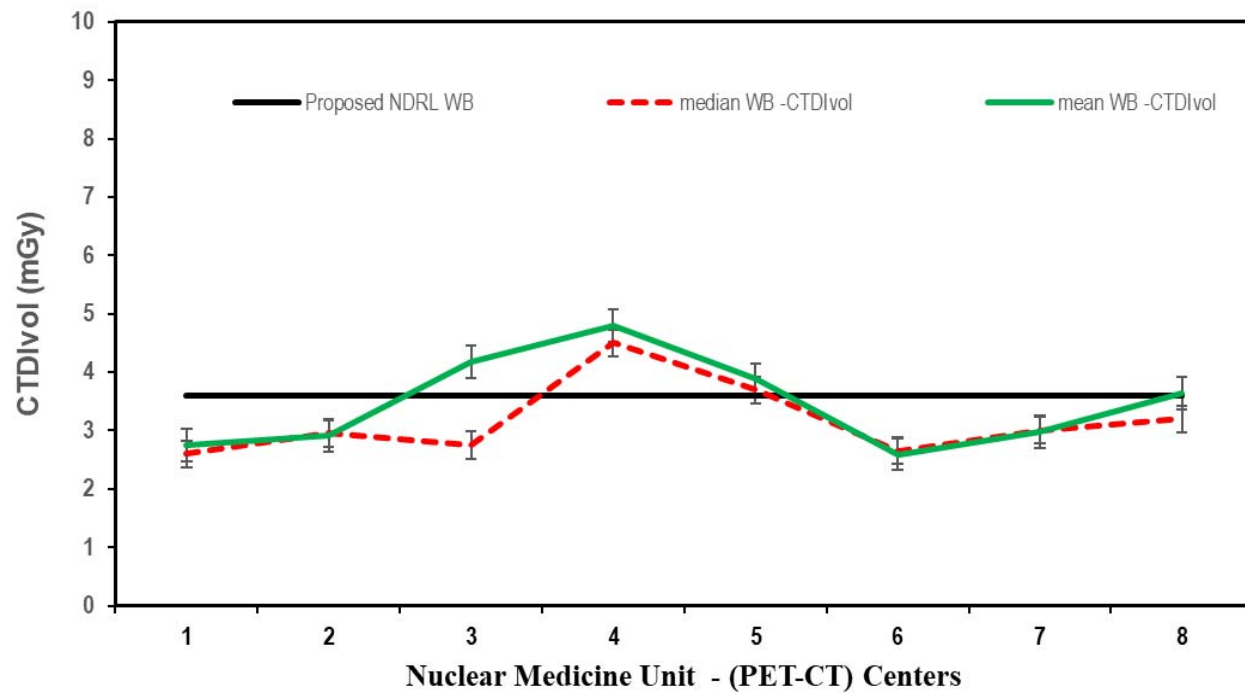


Figure 3: CTDIvol (75th percentile) for each PET-CT unit, compared to the proposed NDRL for WB data.

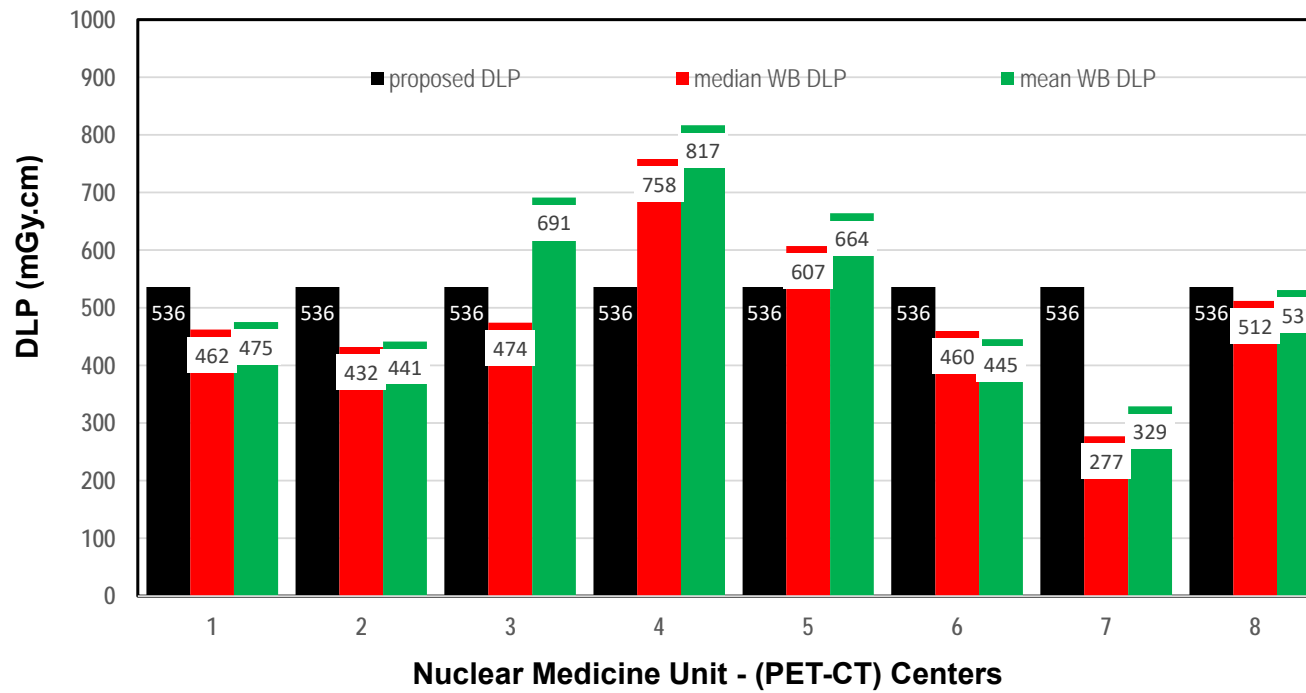


Figure 4: DLP (75th percentile) for each PET-CT unit, compared to the proposed NDRL for WB data.

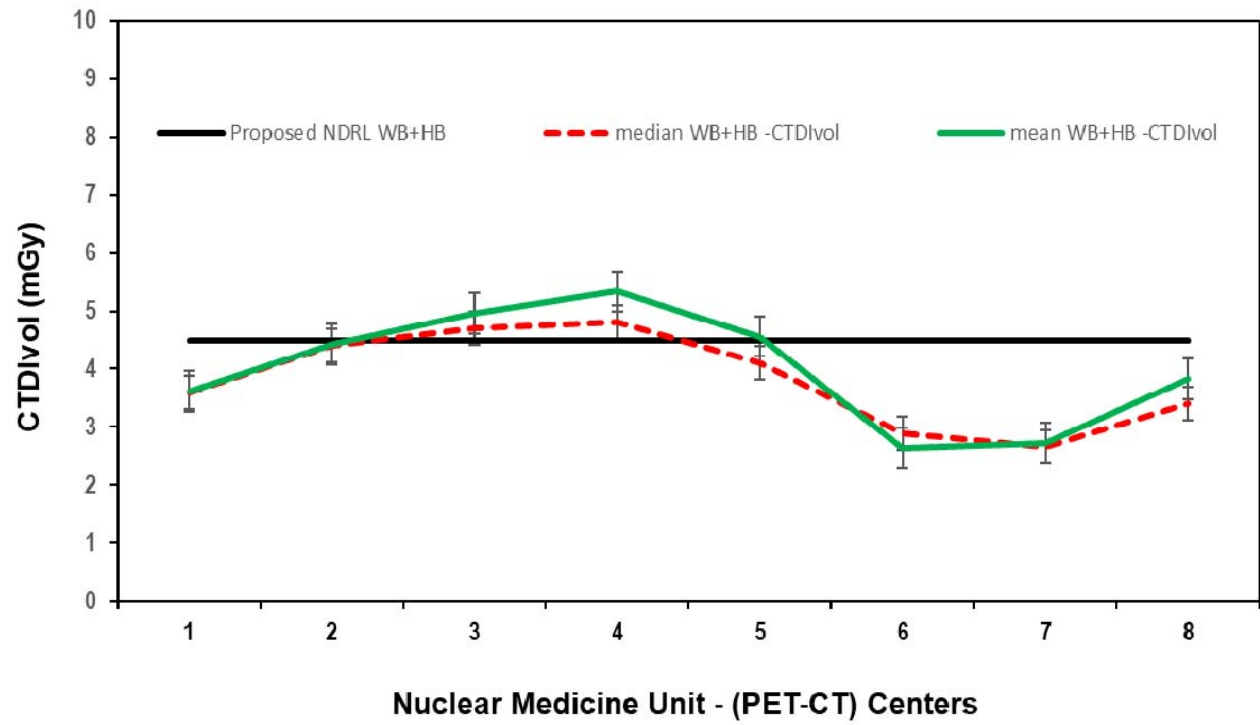


Figure 5: CTDIvol (75th percentile) for each PET-CT unit, compared to the proposed NDRL for WB+HB data.

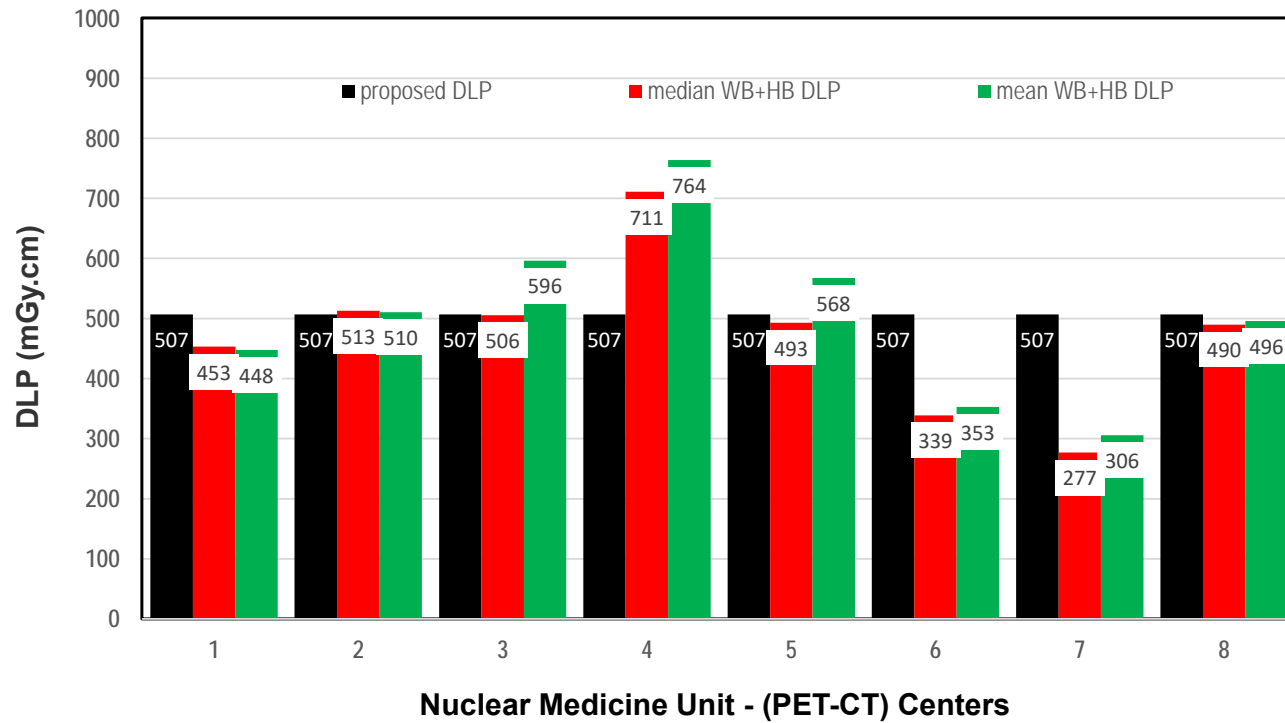


Figure 6: DLP (75th percentile) for each PET-CT unit, compared to the proposed NDRL for WB +HB data.

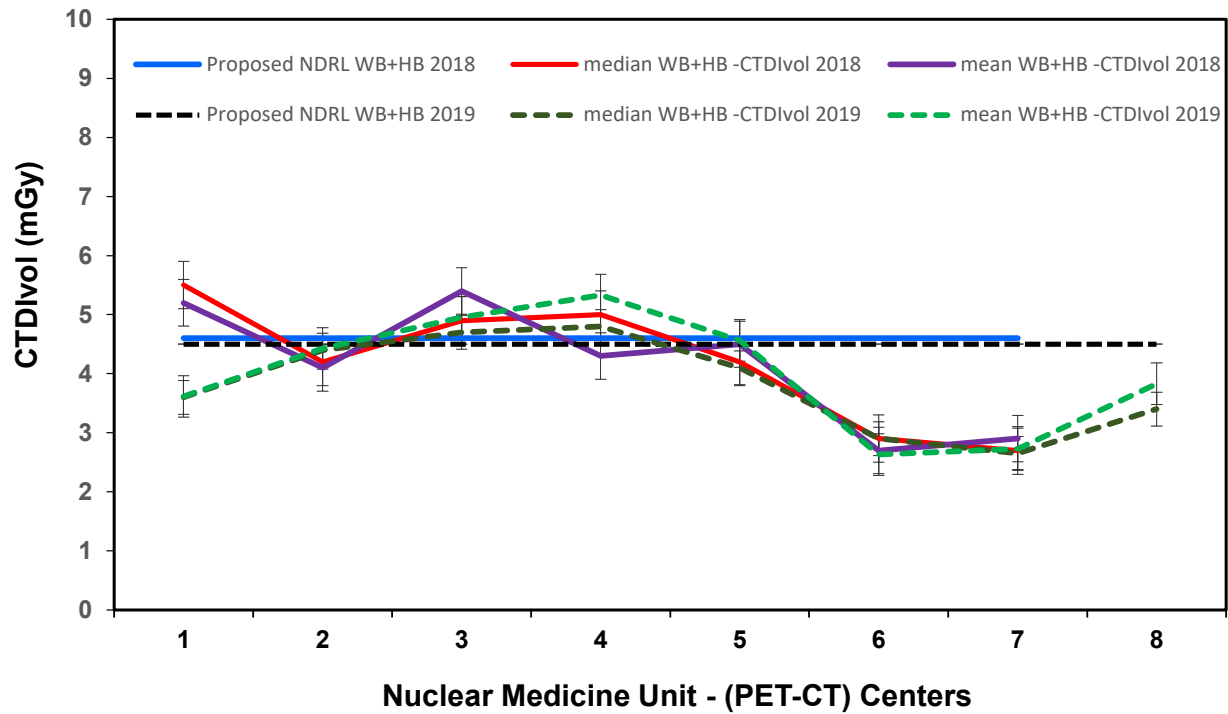


Figure 7: Comparison of CTDIvol (75th percentile) for WB+HB data and proposed NDRL at each PET-CT unit in 2018 and 2019.
-ED: Effective Dose

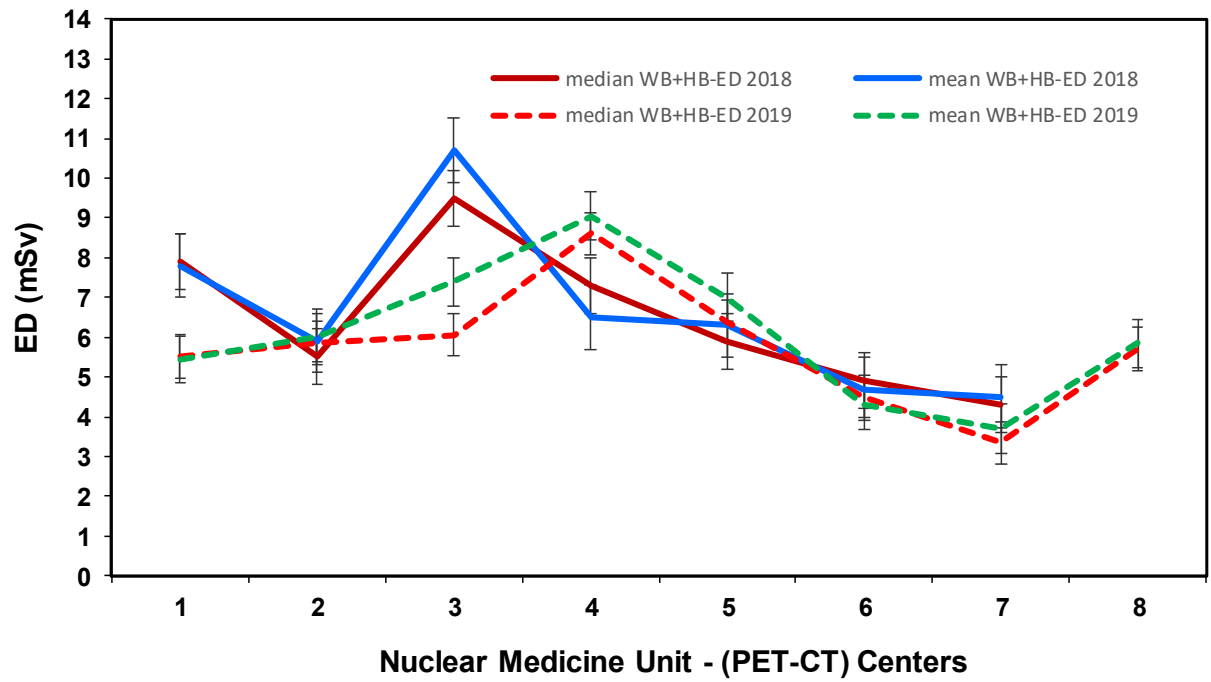


Figure 8: Comparison of CT ED for WB+HB data at each PET-CT unit in 2018 and 2019.

CONCLUSIONS

It is anticipated that with the establishment of the NDRLs, the Achievable dose and continuous monitoring, it will be possible to optimize practice across the Kuwait and reduce their variations in the next future surveys, and to promote improvements in patient protection and quality care in state of Kuwait. The outcome of this second phase audit has further paved the way to refine the setting of NDRL CT part of the PET / CT examination for Kuwait populations which based on the current facilities and practice that is more realistic than external sites. Equally important, it will facilitate and assists to create a data bank (i.e. National Archive) for the future years to sever as a monitoring tool to elevate quality care for KW populations.

DISCLOSURE

This study was supported by the research grant (PR19-13MN-02) from the Kuwait Foundation of Advancement of Sciences (KFAS) that facilitated the 2nd phase of this investigation which utilized state of art technology, technique and advanced science.

ACKNOWLEDGEMENTS

The authors would like to thank the following NM PET/CT centers in the state Kuwait for their effective participation in provision of patient CT data for the second consecutive year (arranged alphabetically): Adan Hospital; Al-Jaber Hospital; Chest Diseases Hospital; Cancer Control Center; Farwaniya Hospital; Jahra Hospital; Jaber Al Ahmed Molecular Imaging, and Mubarak Al Kabeer Hospital.

References

1. Masoomi MA, Al-Shammeri J, Al-Shammeri I, Elrahman H; Bashir M and Bradley D. Establishment of National DRL for CT in Hybrid Imaging Studies – “The First National NM CT (PET) Dose Audit for KW Population International, Journal of Recent Scientific Research, 2019, Vol. 10, Issue, 07(C), pp. 33478-33488. doi:[10.24327/ijrsr.2019.1007.3679](https://doi.org/10.24327/ijrsr.2019.1007.3679)
2. Jallow N, Christian P, Sunderland J, Graham M, Hoffman JM, et al. Diagnostic reference level of CT radiation dose in whole-body PET/CT. *J Nucl Med.* 2017; 57:238-24.
3. Beyer T, Townsend DW, Brun T, et al. A combined PET/CT scanner for clinical oncology. *J Nucl Med.* 2000; 41:1369–1379.
4. Von Schulthess GK, Steinert HC, Hany TF. Integrated PET/CT: current applications and future directions. *Radiology.* 2006;238: 405–422.
5. Kinahan PE, Townsend DW, Beyer T, Sashin D. Attenuation correction for a combined 3D PET/CT scanner. *Med Phys.* 1998;25: 2046–2053.
6. ACR-AAPM Practice Parameter for Diagnostic Reference Levels and Achievable Doses in Medical X-Ray Imaging. Reston, VA: American College of Radiology; 2014.
7. Hays MT, Watson EE, Thomas SR, Stabin M. MIRD dose estimate report no. 19: radiation absorbed dose estimates from 18F-FDG. *J Nucl Med.*2002;43: 210–214.
8. Boellaard R, Oyen WG, Hoekstra C, et al. The Netherlands protocol for standardisation and quantification of FDG whole body PET studies in multi-centre trials. *Eur J Nucl Med Mol Imaging.* 2008; 35:2320–2333.
9. Brix G, Lechel U, Glatting G, et al. Radiation exposure of patients undergoing whole-body dual-modality 18F-FDG PET/CT examinations. *J Nucl Med.* 2005;46: 608–613.
10. Huang B, Law MW, Khong PL. Whole-body PET/CT scanning: estimation of radiation dose and cancer risk. *Radiology.* 2009; 251:166–174.
11. Tonkopi E, Ross AA, MacDonald A. JOURNAL CLUB: CT dose optimisation for whole-body PET/CT examinations. *AJR.* 2013; 201:257–263.
12. Radiation dose to patients from radiopharmaceuticals: addendum 3 to ICRP publication 53—ICRP publication 106. *Ann ICRP.* 2008; 38:1–2.
13. Graham MM, Badawi RD, Wahl RL. Variations in PET/CT methodology for oncologic imaging at U.S. academic medical centers: an imaging response assessment team survey. *J Nucl Med.* 2011; 52:311–317.
14. Alessio AM, Kinahan PE. CT protocol selection in PET/CT imaging. Image Wisely website.<http://www.imagewisely.org/imaging-modalities/nuclear-medicine/articles/ct-protocol-selection>. Accessed November 13, 2015.
15. Pan T, Mawlawi O, Nehmeh SA, et al. Attenuation correction of PET images with respiration-averaged CT images in PET/CT. *J Nucl Med.* 2005;46:1481–1487.
16. Nehmeh SA, Erdi YE, Pan T, et al. Four-dimensional (4D) PET/CT imaging of the thorax. *Med Phys.* 2004;31: 3179–3186.

17. Xia T, Alessio AM, De Man B, Manjeshwar R, Asma E, et al. Ultralow dose CT attenuation correction for PET/CT. *Phys Med Biol*. 2012;57: 309–328.
18. Wu TH, Chu TC, Huang YH, et al. A positron emission tomography/computed tomography (PET/CT) acquisition protocol for CT radiation dose optimisation. *Nucl Med Commun*. 2005; 26:323–330.
19. ICRP, 1991. Recommendations of the International Commission on Radiological Protection. ICRP Publication 60. 1990, Ann. ICRP 21 (1–3).
20. ICRP, Radiological Protection and Safety in Medicine. ICRP Publication 73. 1996, Ann. ICRP 26 (2).
21. International Atomic Energy Agency (IAEA). Radiation Protection of Patients, Diagnostic Reference Levels (DRLs) in CT. https://rpop.iaea.org/RPOP/RPoP/Content/InformationFor/HealthProfessionals/1Radiology/Computed_Tomography/diagnostic-reference-levels.htm [Accessed 26 February 2019].
22. Institute of Physics and Engineering in Medicine (IPEM). Guidance on the Establishment and Use of Diagnostic Reference Levels for Medical X-Ray Examinations. IPEM. 2004; Report 88.
23. IAEA. Radiation Protection of Patients (RPOP) – Diagnostic Reference Levels (DRLs) in Medical Imaging. IAEA. 2016.
24. Söderberg M, Gunnarsson M. Automatic exposure control in computed tomography—an evaluation of systems from different manufacturers. *Acta Radiol*. 2010;51: 625–34.
25. Lee CH, Goo JM, Ye HJ, Ye SJ, Park CM, et al. Radiation dose modulation techniques in the multidetector CT era: from basics to practice. *Radiographics*. 2008; 28:1451–9.
26. Kalra MK, Maher MM, Toth TL, Schmidt B, Westerman BL, et al. Techniques and applications of automatic tube current modulation for CT. *Radiology*. 2004; 233:649–57.
27. Boellaard R, Delgado-Bolton R, Oyen WJ, Giammarile F, Tatsch K, et al. FDG PET-CT: EANM procedure guidelines for tumour imaging: version 2.0. *Eur J Nucl Med Mol Imaging*. 2015; 42:328–54.
28. Delbeke D, Coleman RE, Guiberteau MJ, Brown ML, Royal HD, et al. Procedure guideline for tumor imaging with 18FFDG PET-CT 1.0. *J Nucl Med*. 2006;47: 885–95.
29. Seong JH, Park SK, Kim JS, Jung WY, Kim HS, et al. A comparative study on the CT effective dose for various positions of the patient's arm. *J Korean Phys Soc*. 2012; 61:1137–42.
30. Bongartz G, Golding SJ, Jurik AG, et al. European Guidelines on quality criteria for computed tomography. Luxembourg, Luxembourg: European Commission, 2000: EUR 16262.
31. International Commission on Radiological Protection. Diagnostic reference levels in medical imaging: review and additional advice. A web module produced by Committee 3 of the International Commission on Radiological Protection (ICRP). Available at: http://www.icrp.org/docs/DRL_for_web.pdf. [Accessed January 2019].

32. Shrimpton PC, Jansen JTM, Harrison JD. Updated estimates of typical effective doses for common CT examinations in the UK following the 2011 national review. *Br J Radiol.* 2016; 89:20150346.
33. International Commission on Radiological Protection. Adult reference computational phantoms. ICRP publication 110. *Ann ICRP* 2009; 39:1–164.
34. Shrimpton PC. Assessment of patient dose in CT. NRPB-PE/1/2004. Chilton, NRPB. Also published as Appendix C of the 2004 CT Quality Criteria at: http://www.msct.info/CT_Quality_Criteria.htm; 2004. [Accessed January 2019].
35. Tonkopi E, Ross AA, MacDonald A. CT dose optimization for whole-body PET-CT examinations. *AJR.* 2013; 201:257–263.
36. Inoue Y, Nagahara K, Tanaka Y, Miyatake H, Hata H, et al. Methods of CT Dose Estimation in Whole-Body 18F-FDG PET-CT. *J Nucl Med* 2015; 56:695–700 DOI: 0.2967/jnumed.114.153718.
37. Iball GR, Bebbington NA, Burniston M, Edyvean S, Fraser L, et al. A national survey of computed tomography doses in hybrid PET-CT and SPECT-CT examinations in the UK, *Nuclear Medicine Communications.* 2017, Vol 38 No 6, 459-70.
38. Lima TVM, Gnesin S, Ryckx N, Strobel K, Stritt N, Linder L. Swiss survey on hybrid imaging CTs doses in Nuclear Medicine and proposed national dose reference levels “On behalf of the Swiss Workgroup on Nuclear Medicine DRLs”. *Z Med Phys* xxx 2017. <https://doi.org/10.1016/j.zemedi.2018.01.005> [Accessed 25 February 2019].
39. Etard C, Celier D, Roch P and Aubert B. National Survey of Patient Doses from Whole-Body Fdg Pet-Ct Examinations in France in 2011. Institute de Radioprotection et de Surete' Nucle'aire (IRSN), PRP-HOM/SER/UEM, BP 17, 92262 Fontenay-Aux-Roses, France. *Radiation Protection Dosimetry.* 2012, Vol. 152, No. 4, pp. 334–338.