

1 Research Article

2 **Equivalent SARS-CoV-2 viral loads between nasopharyngeal swab and**
3 **saliva in symptomatic patients**

4 **Running title**

5 SARS-CoV2 in nasopharyngeal and saliva sample

6

7 Isao Yokota, PhD, MPH¹, Takeshi Hattori, MD², Peter Y Shane, MD³, Satoshi Konno, MD⁴,
8 Atsushi Nagasaka, MD⁵, Kimihiro Takeyabu, MD⁶, Shinichi Fujisawa, BS⁷, Mutsumi Nishida,
9 PhD⁷, Takanori Teshima, MD^{3,7,8}

10

11 ¹Department of Biostatistics, Hokkaido University Faculty of Medicine, Sapporo, Japan.

12 ²Department of Respiratory Medicine, Hokkaido Medical Center, Sapporo, Japan

13 ³International Medical Department, Hokkaido University Hospital, Sapporo, Japan.

14 ⁴Department of Respiratory Medicine, Hokkaido University Faculty of Medicine, Sapporo,
15 Japan

16 ⁵Department of Infectious Diseases, Sapporo City General Hospital, Sapporo, Japan

17 ⁶Department of Respiratory Medicine, Otaru Kyokai Hospital, Otaru, Japan

18 ⁷Division of Laboratory and Transfusion Medicine, Hokkaido University Hospital, Sapporo,

NOTE: This preprint reports new research that has not been certified by peer review and should not be used to guide clinical practice.

19 Japan.

20 ⁸Department of Hematology, Hokkaido University Faculty of Medicine, Sapporo, Japan

21

22 **Correspondence address**

23 Takanori Teshima, M.D., Ph.D.

24 Department of Hematology, Hokkaido University Faculty of Medicine

25 N15 W7, Kita-ku, Sapporo, Hokkaido 060-8638, Japan

26 Telephone: 81-11-706-7214, FAX: 81-11-706-7823

27 E-mail: teshima@med.hokudai.ac.jp

28

29 Abstract: 184 words

30 Main text: 856 words

31

32 **Abstract**

33 COVID-19 is diagnosed by detecting SARS-CoV-2 by nasopharyngeal swab (NPS) using
34 real-time quantitative reverse transcriptase polymerase chain reaction (qRT-PCR).
35 Emerging evidences have shown the utility of saliva, although conflicting results have been
36 reported regarding viral loads between NPS and saliva. We conducted a study to compare
37 the viral loads in 42 patients with COVID-19. Both NPS and saliva specimens were
38 simultaneously obtained at a median of 6 days (range, 1-12) after symptom onset. SARS-
39 CoV-2 was detected in 34 (81%) using NPS (median Ct value [IQR]=27.4 [21.3, 35.6]) and
40 38 (90%) using saliva (median Ct value [IQR]= 28.9 [23.1, 33.6]). There was no significance
41 difference between them (Wilcoxon signed rank test: $P=0.79$) and Kendall's W was 0.82,
42 showing a high degree of agreement, indicating equivalent viral loads in NPS and saliva.
43 After symptom onset, the Ct values of both NPS and saliva continued to increase over time,
44 with no substantial difference. Self-collected saliva has a detection sensitivity comparable
45 to that of NPS and is a useful diagnostic tool with mitigating uncomfortable process and the
46 risk of aerosol transmission to healthcare workers.

47

48 **Key words:** SARS-CoV-2, COVID-19, saliva, PCR

49

50 **Introduction**

51 Rapid and accurate diagnosis of coronavirus disease 2019 (COVID-19) is critical for
52 containing outbreaks that may overwhelm healthcare systems. Although the detection of
53 SARS-CoV-2 nucleic acids from nasopharyngeal swabs (NPS) is considered a gold
54 standard in the diagnosis, self-collected saliva has been reported to have several
55 advantages (1, 2). Specifically, self-collection reduces the risk of viral exposure for the
56 healthcare worker and causes less discomfort for the patients. However, although emerging
57 evidences have shown the utility of saliva as an alternative to NPS, (3-7) conflicting results
58 have been reported regarding SARS-CoV-2 viral loads between NPS and saliva. Wyllie et
59 al. showed that the viral load was five-times higher in saliva than NPS(8), while others have
60 reported results to the contrary(9, 10). Herein, we conducted a study to compare the viral
61 loads in paired samples (saliva and NPS) from symptomatic patients who were admitted for
62 COVID-19.

63

64 **Methods**

65 Forty-two patients diagnosed with COVID-19 by positive qRT-PCR of NPS were enrolled in
66 this study. Paired NPS and saliva samples were simultaneously collected from all patients
67 upon hospital admission between June 12, 2020 and August 6, 2020. This study was

68 approved by the Institutional Ethics Board (Hokkaido University Hospital Division of Clinical
69 Research Administration Number: 020-0116) and informed consent was obtained from all
70 patients.

71 qRT-PCR was performed at a central laboratory (SRL, Tokyo, Japan). Self-collected saliva
72 was diluted 4-fold with phosphate buffered saline and centrifuged at $2000 \times g$ for 5 min to
73 remove cells and debris. RNA was extracted from 200 μL of the supernatant or
74 nasopharyngeal swab samples using QIAasymphony DSP Virus/Pathogen kit and QIAamp
75 Viral RNA Mini Kit (QIAGEN, Hilden, Germany). qRT-PCR tests were performed, according
76 to the manual by the National Institute of Infectious Diseases (NIID,
77 <https://www.niid.go.jp/niid/images/epi/corona/2019-nCoVmanual20200217-en.pdf>). Briefly,
78 5 μL of the extracted RNA was used to perform one step qRT-PCR using THUNDERBIRD®
79 Probe One-step qRT-PCR Kit (TOYOBO, Osaka, Japan) and 7500 Real-time PCR Systems
80 (Thermo Fisher Scientific, Waltham, USA). The cycle threshold (Ct)-values were obtained
81 by using N1 primers (N_Sarbeco_F1, N_Sarbeco_R1) with N1 probe (N_Sarbeco_P1)
82 and by using N2 primers (NIID_2019-nCOV_N_F2, NIID_2019-nCOV_N_R2) with N2 probe
83 (NIID_2019-nCOV_N_P2).

84 Ct values of qRT-PCR using NPS and saliva were expressed as scatter plots with Kendall's
85 coefficient of concordance W as nonparametric intraclass correlation coefficient. Scatter

86 plots of Ct values and days from symptom onset for each type of specimen were also
87 provided to examine the relationship between disease course and viral load. To find the
88 longitudinal trends, we performed a median spline regression using “qsreg” function with the
89 default parameters in R. Statistical analysis was conducted by R 4.0.2. All analyzed data
90 were distributed in Supplement.

91

92 **Results**

93 17 female (40%) and 25 male (60%) patients participated in the study. Median age of the
94 patients was 73 years-old (range, 27 to 93) and specimens were obtained at a median of 6
95 days (range, 1-12) after symptom onset. SARS-CoV-2 was detected in NPS and saliva in
96 81% (34/42) and 90% (38/42) of the patients, respectively (Table 1). The Ct values using
97 the N2 primers/probe were not significantly different between NPS and saliva, with median
98 [IQR] of 27.4 [21.3, 35.6] and 28.9 [23.1, 33.6], respectively (Wilcoxon’s signed rank $P=0.79$,
99 Figure 1A). Kendall’s W was 0.82, showing a high degree of agreement. Additionally, the Ct
100 values of both NPS and saliva continued to increase over time, with no substantial difference
101 (Figure 1C). There were cases of both NPS and saliva that became undetermined only three
102 days after the onset of symptoms. Similar results were obtained from N1 primers/probe; the
103 Ct values using the N1 primers/probe were equivalent between NPS and saliva, with median

104 [IQR] of 31.0 [24.2, 39.5] and 33.1 [27.3, 37.3], respectively (Wilcoxon's signed rank $P=0.24$,
105 Figure 1B). Kendall's W was 0.83, showing a high degree of agreement. Changes in Ct
106 values of both NPS and saliva were not different over time (Figure 1D).

107

108 **Discussion**

109 In this study in symptomatic inpatients with COVID-19, SARS-CoV-2 was detected in saliva
110 in 90% of the patients compared to 81% in NPS, with equivalent viral loads in the two
111 specimens. Although there have been conflicting results reported to date(8-10), our study
112 was designed to have significant advantages over previous studies; the number of patients
113 was relatively large, paired samples were simultaneously collected, and qRT-PCR was
114 performed at an independent central laboratory. Our results demonstrate that self-collected
115 saliva is a useful alternative to NPS for the diagnosis of COVID-19. Furthermore, we recently
116 reported equivalent sensitivity and specificity of qRT-PCR using saliva and NPS, again with
117 equivalent viral loads in a large number of asymptomatic individuals in the setting of mass-
118 screening(11). Taken together, self-collected saliva provides highly accurate results and
119 should be considered as an easier and cost-efficient alternative for the detection of SARS-
120 CoV-2 in both symptomatic and asymptomatic individuals.

121 In summary, self-collected saliva is a useful alternative to NPS as a specimen for

122 detecting SARS-CoV-2 nucleic acids. The methodology of self-collection carries significant
123 logistical and cost advantages over NPS by mitigating the risk of aerosol transmission to
124 healthcare workers and obviating the need for full protective suits.

125

126 **Acknowledgments**

127 The authors declare that they have no competing interests. This study was funded by Health,
128 Labour and Welfare Policy Research Grants 20HA2002.

129

130

131 **References**

- 132 1. Wang W, Xu Y, Gao R, Lu R, Han K, Wu G, Tan W. 2020. Detection of SARS-CoV-2
133 in Different Types of Clinical Specimens. JAMA doi:10.1001/jama.2020.3786.
- 134 2. Wang X, Tan L, Wang X, Liu W, Lu Y, Cheng L, Sun Z. 2020. Comparison of
135 nasopharyngeal and oropharyngeal swabs for SARS-CoV-2 detection in 353 patients
136 received tests with both specimens simultaneously. Int J Infect Dis 94:107-109.
- 137 3. To KK, Tsang OT, Chik-Yan Yip C, Chan KH, Wu TC, Chan JMC, Leung WS, Chik TS,
138 Choi CY, Kandamby DH, Lung DC, Tam AR, Poon RW, Fung AY, Hung IF, Cheng VC,
139 Chan JF, Yuen KY. 2020. Consistent detection of 2019 novel coronavirus in saliva.

- 140 Clin Infect Dis doi:10.1093/cid/ciaa149.
- 141 4. Azzi L, Carcano G, Gianfagna F, Grossi P, Gasperina DD, Genoni A, Fasano M,
142 Sessa F, Tettamanti L, Carinci F, Maurino V, Rossi A, Tagliabue A, Baj A. 2020. Saliva
143 is a reliable tool to detect SARS-CoV-2. J Infect 81:e45-e50.
- 144 5. Williams E, Bond K, Zhang B, Putland M, Williamson DA. 2020. Saliva as a non-
145 invasive specimen for detection of SARS-CoV-2. J Clin Microbiol
146 doi:10.1128/JCM.00776-20.
- 147 6. Tu YP, Jennings R, Hart B, Cangelosi GA, Wood RC, Wehber K, Verma P, Vojta D,
148 Berke EM. 2020. Swabs Collected by Patients or Health Care Workers for SARS-
149 CoV-2 Testing. N Engl J Med 383:494-496.
- 150 7. Iwasaki S, Fujisawa S, Nakakubo S, Kamada K, Yamashita Y, Fukumoto T, Sato K,
151 Oguri S, Taki K, Senjo H, Sugita J, Hayasaka K, Konno S, Nishida M, Teshima T.
152 2020. Comparison of SARS-CoV-2 detection in nasopharyngeal swab and saliva. J
153 Infect 81:e145-e147.
- 154 8. Wyllie AL, Fournier J, Casanovas-Massana A, Campbell M, Tokuyama M,
155 Vijayakumar P, Geng B, Muenker MC, Moore AJ, Vogels CBF, Petrone ME, Ott IM,
156 Lu P, Lu-Culligan A, Klein J, Venkataraman A, Earnest R, Simonov M, Datta R,
157 Handoko R, Naushad N, Sewanan LR, Valdez J, White EB, Lapidus S, Kalinich CC,

- 158 Jiang X, Kim DJ, Kudo E, Linehan M, Mao T, Moriyama M, Oh JE, Park A, Silva J,
159 Song E, Takahashi T, Taura M, Weizman O-E, Wong P, Yang Y, Bermejo S, Odio C,
160 Omer SB, Dela Cruz CS, Farhadian S, Martinello RA, Iwasaki A, Grubaugh ND, Ko
161 Al. 2020. Saliva is more sensitive for SARS-CoV-2 detection in COVID-19 patients
162 than nasopharyngeal swabs. medRxiv doi:10.1101/2020.04.16.20067835.
- 163 9. Williams E, Bond K, Zhang B, Putland M, Williamson DA. 2020. Saliva as a
164 Noninvasive Specimen for Detection of SARS-CoV-2. J Clin Microbiol 58.
- 165 10. Becker D, Sandoval E, Amin A, al. e. 2020. Saliva is less sensitive than
166 nasopharyngeal swabs for COVID-19 detection in the community setting. medRxiv
167 doi:<https://doi.org/10.1101/2020.05.11.20092338>.
- 168 11. Yokota I, Shane PY, Okada K, Unoki Y, Yang Y, Inao T, Sakamaki K, Iwasaki S,
169 Hayasaka K, Sugita J, Nishida M, Fujisawa S, Teshima T. 2020. Mass screening of
170 asymptomatic persons for SARS-CoV-2 using saliva. medRxiv
171 doi:10.1101/2020.08.13.20174078:2020.08.13.20174078.

172

173 **Table 1. Detection summary of SARS-CoV-2 (N=42)**

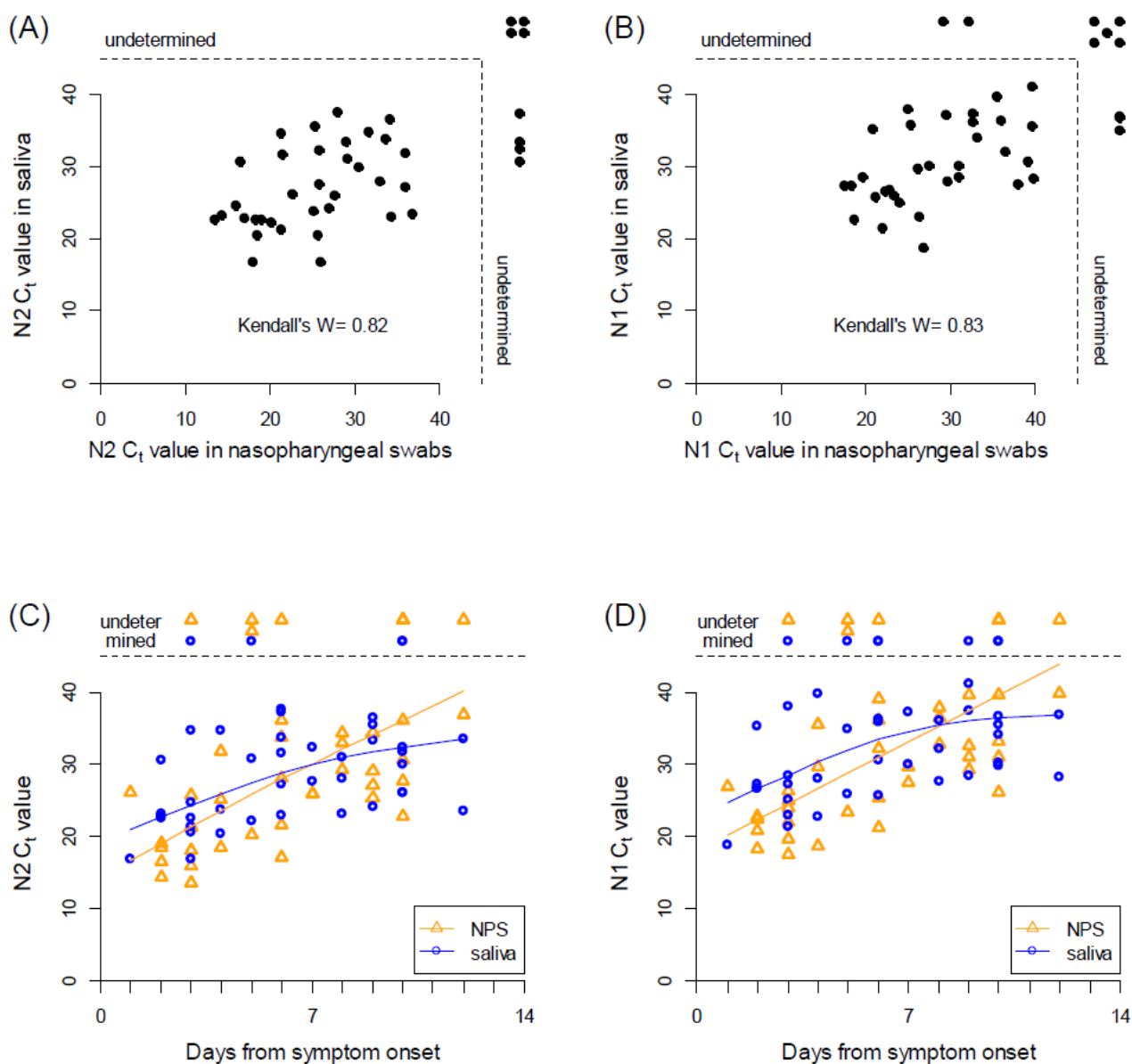
nasopharyngeal swab	saliva	
	positive	negative
positive	34	0
negative	4	4

174

175

176 **Figure 1. Viral loads of SARS-CoV-2 between nasopharyngeal swab and saliva**
177 **specimens.**

178



179

180 **(A, B)** Scatter plots of C_t values using N2 **(A)** or N1 **(B)** primer and probe between NPS and

181 saliva specimens taken from 42 COVID-19 patients. **(C, D)** Scatter plots of C_t values using

182 N2 **(C)** or N1 **(D)** primer and probe primer against days from symptom onset. Median spline

183 curves are also drawn using “qsreg” function with the default parameters in R.

184