

Prevalence and correlation of symptoms and comorbidities in COVID-19 patients: A systematic review and meta-analysis

Mohammad Meshbahur Rahman^{1,2} MSc, Badhan Bhattacharjee³ BSc, Zaki Farhana⁴ MSc, Mohammad Hamiduzzaman⁵ Ph.D., Muhammad Abdul Baker Chowdhury⁶ MPH., Mohammad Sorowar Hossain⁷ Ph.D., Mahbubul H Siddiquee⁸ Ph.D., Md. Ziaul Islam⁹ Ph.D., Enayetur Raheem¹⁰ Ph.D., Md. Jamal Uddin¹¹ Ph.D.

1. Biomedical Research Foundation, Dhaka-1230, Bangladesh. Email: meshbahur.rahman@brfbd.org
2. Department of Basic Science (Biostatistics & Epidemiology), World University of Bangladesh, Dhaka-1230, Bangladesh. Email: meshbahur.rahman@science.wub.edu.bd
3. Department of Biotechnology, BRAC University, Dhaka 1212, Bangladesh. Email: badhanbiplob81@gmail.com
4. Department of Community Medicine, National Institute of Preventive and Social Medicine, Mohakhali, Dhaka-1212, Bangladesh. Email: zakifarhanaesha@yahoo.com
5. College of Medicine & Public Health, Flinders University, South Australia, Australia. Email: mohammad.hamiduzzaman@flinders.edu.au
6. Department of Emergency Medicine, University of Florida College of Medicine, FL 32608, USA. Email: mchow023@fiu.edu
7. Biomedical Research Foundation, Dhaka-1230, Bangladesh. Email: sorowar.hossain@brfbd.org
8. Biomedical Research Foundation, Dhaka-1230, Bangladesh. Email: mahbubul.siddiquee@brfbd.org
9. Department of Community Medicine, National Institute of Preventive and Social Medicine, Mohakhali, Dhaka-1212, Bangladesh. Email: dr.ziaul.islam@gmail.com
10. Biomedical Research Foundation, Dhaka-1230, Bangladesh. Email: enayetur.raheem@brfbd.org
11. Department of Statistics (Biostatistics and Epidemiology), Shahjalal University of Science & Technology, Sylhet-3114, Bangladesh. Email: jamal-sta@sust.edu

Correspondence to: Mohammad Meshbahur Rahman MSc, Research Associate, Biomedical Research Foundation, Dhaka-1230, Bangladesh. Email: meshbahur.rahman@brfbd.org

Abstract

Background: The COVID-19 affected millions of people, and the patients present a constellation of symptoms and comorbidities. We aimed to chronicle the prevalence and correlations of symptoms and comorbidities, and associated covariates among the patients.

Methods: We performed a systematic review and meta-analysis [PROSPERO registration: CRD42020182677]. Databases [PubMed, SCOPUS, EMBASE, WHO, Semantic Scholar, and COVID-19 Primer] were searched for clinical studies published in English from January 1 to April 20, 2020. The pooled prevalence of symptoms and comorbidities were identified using the random effect model, and sub-groups analysis of patients' age and locations were investigated. A multivariable factor analysis was also performed to show the correlation among symptoms, comorbidities and age of the COVID-19 patients.

Findings: Twenty-nine articles [China (24); Outside of China (5)], with 4,884 COVID-19 patients were included in this systematic review. The meta-analysis investigated 33 symptoms, where fever [84%], cough/dry cough [61%], and fatigue/weakness [42%] were found frequent. Out of 43 comorbidities investigated, acute respiratory distress syndrome (ARDS) [61%] was a common condition, followed by hypertension [23%] and diabetes [12%]. According to the patients' age, the prevalence of symptoms like fatigue/weakness, dyspnea/shortness of breath, and anorexia were highly prevalent in older adults [≥ 50 years] than younger adults [< 50 years]. Diabetes, hypertension, coronary heart disease, and COPD/lung disease were more prevalent comorbidities in older adults than younger adults. The patients from outside of China had significantly higher prevalence [$p < 0.005$] of diarrhea, fatigue, nausea, sore throat, and dyspnea, and the prevalent comorbidities in that region were diabetes, hypertension, coronary heart disease, and ARDS.

The multivariable factor analysis showed positive association between a group of symptoms and comorbidities, and with the patients' age.

Interpretation: Epitomizing the correlation of symptoms of COVID-19 with comorbidities and patients' age would help clinicians effectively manage the patients.

Keywords: COVID-19 pandemic; Symptoms and Comorbidities; Meta-analysis and Correlation Analysis.

Summary box

What is already known?

- There is scarce evidence on the prevalence of all symptoms and comorbidities in COVID-19 infected older adults and patients from outside of China.
- Previously published review studies excluded a wide range of symptoms and comorbidities from their analysis due to limited time-frame.
- Study on the correlation of symptoms and comorbidity with age of the COVID-19 patients are not yet to be explored.

What are the new findings?

- We investigated all the reported symptoms [33] and comorbidity [43] where fever [84%], cough/dry cough [61%], fatigue/weakness [42%] and dyspnea/shortness of breath [39%] were the most prevalent symptoms, and ARDS [61%], followed by hypertension [23%] and diabetes [12%] were the most frequent comorbidity.
- Key findings, the fatigue/weakness, dyspnea/shortness of breath and anorexia were comparatively higher in older adults than younger adults, and the patients from outside of China had a higher

prevalence diarrhoea, fatigue, nausea, sore throat, dyspnea, diabetes, hypertension, coronary heart disease and ARDS.

- Key findings, the symptoms comprising fever, dyspnea/shortness of breath, nausea, vomiting, abdominal pain, dizziness, anorexia and pharyngalgia; and the comorbidities including diabetes, hypertension, coronary heart disease, COPD/lung disease and ARDS were positively correlated with the COVID-19 patient's age.

What do the new findings imply?

- These findings according to patient's age and geographical variations may help the health care providers and policy makers.
- This pioneering efforts in estimating the prevalence and correlations of all frequent symptoms and comorbidities will help the clinicians and disease practitioners like WHO to implement patient-centered interventions.

Introduction

The COVID-19 pandemic caused by Severe Acute Respiratory Virus 2 (SARS-CoV-2) is a serious public health crisis in the history of humanity. Originated in Wuhan, China, SARS-CoV-2 has spread to every corner of the world within a few months. As of June 19, 2020, over 8.37 million cases and 450,087 deaths have been reported from over 216 countries.¹

As the virus is moving fast, various clinical spectrum and differential clinical outcomes are unfolding across different geographic locations. Several symptoms have been reported which includes fever, cough, myalgia, sputum production, headache, hemoptysis, diarrhea, and dyspnea.² The severity of COVID-19 has been reported to be linked with various host factors including diabetes, hypertension, cardiovascular disease, chronic obstructive pulmonary disease (COPD), malignancy, and chronic liver disease.² While susceptibility to COVID-19 covers all age groups, people with compromised immune systems and or having comorbidity are at a higher risk.^{3,4} The mortality rate is high in older patients with organ dysfunctions comprising shock, acute respiratory distress syndrome (ARDS), acute cardiac injury, and acute kidney injury.⁵

The majority of the relevant systematic reviews focused either on symptoms or comorbid conditions.^{3,6-9} Only a few studies reviewed both symptoms and comorbidities during a shorter time-frame. Consequently, a wide range of symptoms and comorbidities were excluded from the analysis.^{7,9} Despite COVID-19 being a global pandemic, these studies' findings mostly reflect the demography of China. Moreover, none of the systematic reviews analysed age-group variations in describing clinical symptoms and comorbidities. The associations of symptoms and comorbidities with the age of the COVID-19 patients are yet to be explored. Updated information on the COVID-19 clinical spectrum associated with comorbidities and other factors is crucial for clinical management and the decision-making process in

public health. We attempted a systematic review and meta-analysis to (i) understand the prevalence of symptoms and comorbidities, with subgroup analysis [patient's age-groups and geographical locations]; (ii) study the correlation between a collection of symptoms and comorbidities, and age in the COVID-19 patients.

Methods

We followed the PRISMA-P-2009 guidelines in our review [PROSPERO registration: CRD42020182677].¹⁰

Search strategies and selection criteria

We conducted a systematic search in major databases, such as PubMed, SCOPUS, EMBASE, WHO, Semantic Scholar, and COVID-19 Primer, to include peer-reviewed and pre-proof research articles published from January 1 to April 20, 2020 [supplementary Table S1]. The search terms used included: "COVID-19" OR "COVID-2019" OR "severe acute respiratory syndrome coronavirus 2" OR "2019-nCoV" OR "2019nCoV" OR "nCoV" OR "SARS-CoV-2" OR "coronavirus" AND "clinical for epidemiological characterization" OR "Symptom" OR "Symptoms" AND "comorbidity" OR "comorbidities". Some articles were manually retrieved from Google Scholar and other databases. We also searched the reference lists of the selected publications. MMR, BB, and MJU independently screened the titles and abstracts of the articles and checked full-text eligibility.

Research articles were selected if they reported clinical characteristics [both symptoms and comorbidities] of the COVID-19 patients. The inclusion criteria for studies were: clinical investigations or consecutive cases; focused on infected patients; reported at least ten cases; considered all age-groups; and published in English and any countries. Studies were excluded if they were: grey literature, case

report and secondary studies; specific to children or pregnant women; and only reported symptoms or comorbidities.

Data analysis

A standardized form was used to extract data from eligible studies. Disagreements were resolved through discussion with co-reviewers. For each study, the following information was recorded: publication details [e.g., first author, publication date, journal name, and publisher]; research setting, design and population [e.g., country, study area and time, study design, and case number]; participants' characteristics and major findings [e.g., gender, age range and median age, number of reported symptoms and comorbidities, the prevalence of symptoms and comorbidities, outcome measures, and key reported findings].

The quality of each study was assessed by ZF using the Joanna Briggs Institute (JBI) guidelines on conducting prevalence and incidence reviews.¹¹ A set of eight questions was used for the quality assessment. To assess asymmetry and publication bias, we used a funnel plot. Egger test [$p < 0.001$] was also performed to test the presence of small-study effects.

We defined the prevalence of symptoms and comorbidities as the proportion of the population with COVID-19 symptoms and comorbidities in the mentioned time period. Summary statistics of the infected patients were recorded, and a random effect model was used to perform a meta-analysis. Heterogeneity was assessed using the Cochran Q and the I^2 statistic.^{12,13} Subgroup analysis was conducted according to age-groups and geographical locations of the COVID-19 patients. A multivariate analysis [multivariable factor analysis (MFA)] was also performed to examine the correlation among symptoms and comorbidities with the patients' age.^{14,15} All statistical analyses were conducted by Stata version 15 (Stata Corp, College Station, TX) using the metaprop, metabias, metafunnel commands, and R-programming language using the FactoMineR package.

Patient and public involvement

Patients and public were not involved in the development of the research question or conception and design of the study. Because of nature of the study, there was no patient or public involvement in measuring the outcomes, in providing interpretations of the findings, or writing of the manuscript.

Results

PRISMA Flow Diagram visualizes the screening process [Figure 1]. A total of 799 articles [database: 791, other sources: 8] were retrieved. Of them, 403 articles were removed due to duplication and irrelevance. Furthermore, 303 review articles, editorials, case reports, and irrelevant study populations were excluded. Fifty-three articles were excluded as they failed to meet all inclusion criteria. Finally, eleven articles were excluded due to not peer-reviewed and small sample sizes, resulting in the selection of 29 articles for our review.

Supplementary table S2 summarizes the characteristics of the selected studies. We found 83% of selected studies for meta-analysis were reported from China. Five studies were conducted in the USA, India, Spain, and South Korea. The overall sample size was 4,884 COVID-19 patients, with an age range of 10 to 92 years. Among the patients, 2,675 [55%] were male, and 2,208[45%] were female. The sample size ranged from 12 to 1,099 patients, where most studies (79%) had a retrospective research design.

Altogether, 33 symptoms and 43 comorbidities were found. Almost all the studies reported fever [proportion of patients ranging from 25 to 100%], cough/dry cough [22-92%] and myalgia or muscle ache [3-63%] as common symptoms of COVID-19. Other reported symptoms were: headache [3-66%]; diarrhea [3-48%]; fatigue/weakness [9-85%]; dyspnea/shortness of breath [1-88%]; sputum production or expectoration [4-42%]; vomiting [1-19%]; nausea [4-27%]; chest tightness [7-55%]; and sore throat

[5-32%]. Additionally, 24% studies recorded anorexia [1-57%] and hemoptysis [1-5%]; 21% studies documented abdominal pain [2-7%], dizziness [2-9%], and pharyngalgia [2-18%]; 17% studies registered rhinorrhea [4-31%] and chest pain [2-4%]. The less reported symptoms in studies were chill and nasal obstruction or conjunctive ache, palpitation, malaise, and poor appetite or loss appetite, conjunctival congestion, throat congestion, tonsil swelling, rash, retching, anosmia, ageusia, snotty, and arthralgia.

About 93% and 86% of studies reported two comorbidities: diabetes [2 to 35%] and hypertension [8-50%]. Other prevalent comorbidities were chronic obstructive pulmonary disease (COPD)/lung infection [0.2-38%]; cardiovascular disease [5-23%]; chronic liver disease [1-29%]; malignancy [1-7%]; coronary heart disease [1-33%]; cerebrovascular disease [1-19%]; chronic renal disease [1-8%]; chronic kidney disease [1-29%]; and Acute respiratory distress syndrome (ARDS) [17-100%]. Furthermore, 4 to 10% studies reported HIV and immune deficiency, thyroid disease, tumor, pneumonia, autoimmune disease, gastrointestinal disorders, respiratory system disease or acute respiratory injury, Tuberculosis, hepatitis B, asthma, obesity, gastric ulcer, hyperlipidemia, mental disorder, urolithiasis, cholelithiasis, arrhythmia, bacterial co-infection, urinary tract infection, metabolic arthritis, chronic gastric, cerebral infarction, persistent atrial fibrillation, septic shock, allergic rhinitis, sinus disease, anxiety, migraine, obstructive sleep apnea, digestive system disease, and endocrine disease [supplementary table S2].

We analysed 19 symptoms and 11 comorbidities, using a random effect model that were reported in at least five selected articles [Table 1 and supplementary figure S3-S32]. Meta-analysis showed a higher prevalence of fever [pooled prevalence: 84%, 95% confidence interval (CI): 80-88%] and cough/dry cough [61%, 95% CI:55-67%]; followed by fatigue/weakness [42%, 95% CI:34-51%]; dyspnea/shortness of breath [39%, 95% CI:27-51%]; headache and diarrhea [12%, 95% CI:8-17%]; sore throat [15%, 95% CI:11-20%]; myalgia/muscle ache and sputum production/expectoration [24%, 95%

CI:18-30%]; rhinorrhea [13%, 95% CI:4-26%]; chest tightness [25%, 95% CI:15-31%]; and anorexia [26%, 95% CI:16-38%]. The less prevalent symptoms were: chest pain [3%], nausea [8%], vomiting [6%], abdominal pain [4%], dizziness [5%], pharyngalgia [7%], and hemoptysis [2%].

Table 1. Overall Prevalence summary for clinical symptoms and comorbidities of the COVID-19 patients.

Clinical Characteristics (Symptoms)	No. Reports	No. Patients	Pooled Prevalence	Test for Heterogeneity		Egger's Test
				I ² (%)	P-value	
Fever	29 (100%)	4115	0.84 (0.80-0.88)	90.670	<0.001	<0.001
Cough / Dry cough	29(100%)	3039	0.61 (0.55-0.67)	93.400	<0.001	0.382
Fatigue/Weakness	21 (72.41%)	1627	0.42 (0.34-0.51)	96.320	<0.001	0.107
Dyspnoea/Shortness of breath	18 (62.06%)	920	0.39 (0.27-0.51)	97.370	<0.001	<0.001
Headache	22 (72.86%)	448	0.12 (0.09-0.16)	89.980	<0.001	0.109
Diarrhoea	22 (72.86%)	474	0.12 (0.08-0.17)	93.720	<0.001	0.004
Sore Throat	9 (31.03%)	348	0.15 (0.11-0.20)	84.990	<0.001	0.266
Myalgia/Muscle Ache	25 (86.20%)	925	0.24 (0.18-0.30)	95.000	<0.001	<0.001
Rhinorrhoea	5 (17.24%)	48	0.13 (0.04-0.26)	88.010	<0.001	0.088
Sputum Production/Expectoration	15 (51.72%)	1066	0.24 (0.19-0.30)	92.310	<0.001	0.956
Chest tightness	11 (37.93%)	462	0.25 (0.15-0.31)	88.440	<0.001	0.527
Chest pain	5 (17.24%)	15	0.03 (0.01-0.04)	0.000	<0.95	0.878
Nausea	12 (41.37%)	238	0.08 (0.04-0.12)	91.780	<0.001	0.023
Vomiting	14 (48.27%)	209	0.06 (0.03-0.09)	88.330	<0.001	0.096
Abdominal Pain	6 (20.68%)	42	0.04 (0.03-0.06)	22.890	<0.26	0.431
Dizziness	6 (20.68%)	71	0.05 (0.03-0.08)	64.21	<0.002	0.132
Anorexia	7 (24.13%)	339	0.26 (0.16-0.38)	94.470	<0.001	<0.001
Pharyngalgia	6 (20.68%)	86	0.07 (0.04-0.13)	88.030	<0.001	0.017
Haemoptysis	7 (24.13%)	47	0.02 (0.01-0.04)	63.480	<0.01	0.005
Comorbidity						
Diabetes	27 (93.10)	539	0.12 (0.09-0.15)	83.09	<0.001	0.009
Hypertension	25 (86.20)	1096	0.23 (0.18-0.28)	93.24	<0.001	0.149
Cardiovascular Disease	15 (51.72)	212	0.1 (0.07-0.13)	73.96	<0.001	0.031
Coronary heart disease	10 (34.48)	141	0.07 (0.03-0.12)	92.21	<0.001	0.007
Cerebrovascular disease	10 (34.48)	100	0.06 (0.02-0.08)	90.77	<0.001	0.004
COPD/Lung disease	21 (72.41)	136	0.03 (0.02-0.05)	86.67	<0.001	<0.001
Chronic liver disease	15 (51.72)	96	0.05 (0.03-0.07)	78.23	<0.001	<0.001
Chronic Renal disease	9 (31.03)	32	0.01 (0.00-0.03)	54.63	<0.001	0.003
Chronic Kidney disease	6 (20.68)	41	0.05 (0.02-0.10)	86.69	<0.001	0.036
Malignancy	15 (51.72)	82	0.03 (0.02-0.04)	68.06	<0.001	<0.001
ARDS**	4 (13.79)	111	0.61 (0.15-0.97)	98.01	<0.001	0.301

** ARDS reported in four studies and we include this study into our analysis because it showed significant prevalence.

There was a high heterogeneity [I² ranged from 85% to 97%, Cochran Q-statistic p < 0.001] in all the prevalence of symptoms, except chest pain [I² = 0%, Cochran Q-statistic p < 0.95]; abdominal pain [I² =

22.89%, Cochran Q-statistic $p < 0.26$]; dizziness [$I^2 = 64.21\%$, Cochran Q-statistic $p < 0.002$]; and haemoptysis [$I^2 = 63.48\%$, Cochran Q-statistic $p < 0.01$].

The most prevalent comorbidities were ARDS [61%, 95% CI: 15-97%], hypertension [23%, 95% CI: 18-28%], and diabetes [12%, 95% CI:9-15%], followed by cardiovascular disease [10%, 95% CI:7-13%]; coronary heart disease [7%, 95% CI:3-12%]; cerebrovascular disease [6%, 95% CI:2-08%]; COPD/lung disease [3%, 95% CI: 02-50%]; chronic liver disease [05%, 95% CI: 03-07%]; chronic Renal disease [0.01%, 95% CI: 00%-03%]; chronic Kidney disease [05%, 95% CI: 02-10%]; and malignancy [03%, 95% CI: 02-04%]. High heterogeneity was found in almost all the comorbidities [I^2 ranged from 68.06% to 98.01%, Cochran Q-statistic $p < 0.001$].

We performed subgroup meta-analysis using 15 symptoms and ten comorbidities, according to mean or median age of the COVID-19 patients [Table 2 and supplementary figure S33-S57]. We purposively divided the patients into younger adults [Mean/Median < 50 years]; and older adults [≥ 50 years]. Nineteen articles included younger adults, and ten articles included older adults as study participants. According to subgroup analysis, the prevalence of fatigue/weakness [older adults: 53%, younger adults: 38%], dyspnea/shortness of breath [54%, 26%] and anorexia [34%, 16%] were comparatively higher [$p < 0.05$] among the older adults than younger adults. However, the symptoms like headache [14%, 7%] and pharyngalgia [17%, 4%] were highly prevalent [$p < 0.05$] in younger adults than older adults. No age variation [$p > 0.05$] was found in the prevalence of fever, cough/dry cough, chest tightness, hemoptysis, myalgia/muscle ache, nausea, abdominal pain, vomiting, sputum production/expectoration, and rhinorrhea. In regard to comorbidity, diabetes [older adults: 18%, younger adult: 8%], hypertension [34%, 17%], coronary heart disease [13%, 4%], COPD/lung disease [6%, 2%] and chronic renal disease [3%, 1%] were more prevalent [$p < 0.05$] in older adults than younger adults, but the cardiovascular

disease, chronic liver disease, malignancy, chronic kidney disease and cerebrovascular disease resulted no age variation.

Table 2. Summary of sub group analysis for clinical symptoms and comorbidities according to age of the COVID-19 patients.

Clinical Symptoms	Younger Adult (Mean/Median Age<50 years)					Older Adult (Mean/Median Age>50)				
	No. Reports	No. Patients	Pooled Prevalence % (95% CI)	Test for Heterogeneity I ² (%) P		No. Reports	No. Patients	Pooled Prevalence % (95% CI)	Test for Heterogeneity I ² (%) P	
Symptoms										
Fever	19	2779	0.82(0.77-0.86)	90.13	0.00	10	1336	0.88(0.81-0.94)	92.35	0.00
Cough / Dry cough	19	2090	0.62(0.56-0.68)	89.34	0.00	10	949	0.61(0.47-0.74)	96.39	0.00
Fatigue/Weakness	16	1098	0.38(0.28-0.49)	96.46	0.00	05	529	0.53(0.42-0.64)	92.40	0.00
Chest Tightness	07	161	0.21(0.12-0.30)	87.35	0.00	04	301	0.31(0.24-0.39)	84.58	0.00
Dyspnea/Shortness of breath	10	242	0.26(0.14-0.41)	96.44	0.00	08	678	0.54(0.44-0.65)	92.57	0.00
Headache	17	419	0.14(0.10-0.19)	90.32	0.00	05	65	0.07(0.04-0.11)	75.39	0.00
Hemoptysis	06	085	0.02(0.01-0.04)	66.01	0.01	01	08	0.03(0.01-0.06)	--	--
Myalgia/Muscle Ache	15	606	0.27(0.19-0.35)	94.85	0.00	10	319	0.19(0.10-0.30)	95.67	0.00
Nausea	07	116	0.07(0.03-0.13)	90.90	0.00	05	122	0.09(0.03-0.17)	92.59	0.00
Abdominal Pain	02	09	0.05(0.02-0.09)	--	--	04	33	0.04(0.02-0.07)	50.28	0.11
Anorexia	03	80	0.16(0.01-0.43)	--	--	04	259	0.34(0.24-0.45)	90.20	0.00
Vomiting	07	79	0.08(0.04-0.14)	87.61	0.00	07	130	0.04(0.02-0.07)	75.99	0.00
Sputum Production/Expectoration	12	859	0.22(0.16-0.30)	93.84	0.00	03	207	0.30(0.26-0.35)	--	--
Pharyngalgia	02	47	0.17(0.13-0.22)	--	--	04	39	0.04(0.02-0.06)	0.00	0.63
Rhinorrhea	04	46	0.15(0.04-0.32)	89.90	0.00	01	03	0.06(0.04-0.26)	--	--
Comorbidity										
Diabetes	17	250	0.08(0.07-0.10)	34.89	0.08	10	289	0.18(0.13-0.23)	77.31	0.00
Hypertension	16	513	0.17(0.14-0.21)	76.69	0.00	09	583	0.34(0.27-0.42)	86.20	0.00
Cardiovascular Disease	09	98	0.09(0.05-0.12)	75.22	0.00	06	114	0.12(0.08-0.16)	67.27	0.01
Coronary heart disease	06	67	0.04(0.02-0.07)	84.39	0.00	04	74	0.13(0.09-0.17)	16.36	0.31
COPD/Lung disease	13	43	0.02(0.01-0.03)	71.93	0.00	08	93	0.06(0.03-0.10)	82.69	0.00
Chronic liver disease	11	55	0.04(0.02-0.06)	50.72	0.03	04	41	0.07(0.01-0.18)	93.17	0.00
Chronic Kidney Disease	02	06	0.03(0.01-0.06)	--	--	04	35	0.06(0.01-0.15)	91.98	0.00
Malignancy	11	47	0.02(0.01-0.03)	60.95	0.00	04	35	0.04(0.03-0.05)	00	0.41
Cerebrovascular Disease	06	54	0.05(0.01-0.12)	93.22	0.00	04	46	0.04(0.02-0.08)	82.52	0.00
Clinical Renal Disease	07	25	0.01(0.00-0.02)	38.50	0.14	02	07	0.03(0.00-0.07)	--	--

Subgroup meta-analysis on the patients' geographical locations [China vs Outside of China] was conducted on nine symptoms and eight comorbidities [Table 3 and supplementary figure S58-S75]. Analysis showed the patients from outside China had significantly higher prevalence [$p < 0.005$] of diarrhea [Outside of China: 27%, China: 10%], fatigue [59%, 42%], nausea [20%, 5%], sore throat [29%, 12%] and dyspnea [67%, 33%] compared to China. Although fever was insignificantly [$p > 0.5$] higher in china, there was no significant difference found among the countries in abdominal pain, cough/dry cough, headache, and myalgia. Similarly, the studies from outside China had significantly higher prevalence of diabetes [15%, 11%], hypertension [33%, 21%], coronary heart disease [13%, 06%], and ARDS [41%, 100% (Victoria, Spain)] compared to China. However, we found no geographical variation in cardiovascular disease, chronic liver disease, COPD/lung disease, and malignancy.

Table 3. Summary of sub-group analysis for clinical symptoms and comorbidities according to geographical location of the COVID-19 patients.

Clinical Symptoms	China					Outside of China				
	No. Reports	No. Patients	Pooled Prevalence % (95% CI)	Test for Heterogeneity I ² (%)	P	No. Reports	No. Patients	Pooled Prevalence % (95% CI)	Test for Heterogeneity I ² (%)	P
Symptoms										
Fever	24	3707	0.86(0.82-0.89)	87.60	0.00	05	408	0.68(0.43-0.89)	95.05	0.00
Cough / Dry cough	24	3501	0.61(0.55-0.67)	93.42	0.00	05	401	0.60(0.42-0.77)	90.40	0.00
Fatigue/Weakness	19	1576	0.42(0.33-0.50)	96.29	0.00	02	51	0.59(0.48-0.69)		
Dyspnea/Shortness of breath	15	624	0.33(0.22-0.46)	96.94	0.00	03	920	0.67(0.47-0.84)		
Headache	19	435	0.10(0.07-0.13)	84.69	0.00	03	49	0.35(0.07-0.70)		
Sore Throat	06	316	0.12(0.09-0.17)	85.63	0.00	03	32	0.29(0.21-0.39)		
Myalgia/Muscle Ache	21	804	0.23(0.17-0.30)	95.22	0.00	04	121	0.25(0.07-0.50)	94.84	0.00
Nausea	10	147	0.05(0.03-0.08)	82.92	0.00	02	91	0.20(0.16-0.24)		
Abdominal Pain	05	41	0.04(0.03-0.06)	38.29	0.17	01	1	0.04(0.01-0.18)		
Comorbidity										
Diabetes	22	422	0.11(0.09-0.14)	77.36	0.00	05	117	0.15(0.08-0.24)	72.34	0.01
Hypertension	22	865	0.21(0.17-0.26)	90.13	0.00	04	231	0.33(0.15-0.53)	91.87	0.00
Cardiovascular Disease	14	209	0.10(0.07-0.13)	75.03	0.00	01	3	0.02(0.05-0.14)		
Coronary heart disease	08	81	0.06(0.03-0.10)	87.04	0.00	02	60	0.13(0.10-0.17)		
COPD/Lung disease	18	95	0.02(0.01-0.04)	80.76	0.00	03	41	0.13(0.01-0.33)		
Chronic liver disease	14	95	0.05(0.03-0.07)	79.76	0.00	01	1	0.04(0.01-0.18)		
Malignancy	13	79	0.03(0.02-0.04)	71.68	0.00	02	3	0.03(0.00-0.09)		
ARDS	03	63	0.41(0.11-0.75)			01	48	1.00(0.93-1.00)		

Table 4 summarizes the quality assessment of the selected studies. In 16 [55%] studies, participant recruitment method was appropriate, while the method was unclear in 45% studies. Thirteen [45%] studies had a sample size of more than 100, and about 96% of studies reported the subjects and design in detail. Validated methods were used in all studies, where the measurement was reliable, and the response rate was 100%.

Table 4. Quality assessment of the selected studies.

Authors	Were study participants sampled in an appropriate way?	Was the sample size adequate?	Were the study subjects and the setting described in detail?	Was the data analysis conducted with sufficient coverage of the identified sample?	Were valid methods used for the identification of the condition?	Was the condition measured in a reliable way for all participants?	Was there appropriate statistical analysis?	Was the response rate adequate, and if not, was the low response rate managed appropriately?
Wan et al. ³⁶	Yes	Yes	Yes	Yes	Yes	Yes	Yes	Yes
Zhang et al. ³⁷	Yes	Yes	Yes	Yes	Yes	Yes	Yes	Yes
Xu et al. ²⁰	Not Clear	No	Yes	Yes	Yes	Yes	Yes	Yes
Zhu et al. ³⁸	Not Clear	No	Yes	Yes	Yes	Yes	Yes	Yes
Chen et al. ³⁹	Yes	No	Yes	Yes	Yes	Yes	Yes	Yes
Liu et al. ⁴⁰	Yes	No	Yes	Yes	Yes	Yes	Yes	Yes
Chen et al. ²²	Not Clear	Yes	Yes	Yes	Yes	Yes	Yes	Yes
Mo et al. ⁴¹	Yes	Yes	Yes	Yes	Yes	Yes	Yes	Yes
Liu et al. ²¹	Not Clear	Yes	Yes	Yes	Yes	Yes	Yes	Yes
Jin et al. ⁴²	Yes	Yes	Yes	Yes	Yes	Yes	Yes	Yes
Wang et al. ¹⁶	Yes	Yes	Yes	Yes	Yes	Yes	Yes	Yes
Yuan et al. ²³	Not Clear	No	Yes	Yes	Yes	Yes	Yes	Yes
Guan et al. ⁴³	Yes	Yes	Yes	Yes	Yes	Yes	Yes	Yes
Liu et al. ³¹	Not Clear	No	Yes	Yes	Yes	Yes	Yes	Yes
Zhou et al. ⁴⁴	Yes	Yes	Yes	Yes	Yes	Yes	Yes	Yes
Huang et al. ²	Not Clear	No	Yes	Yes	Yes	Yes	Yes	Yes
Chen et al. ²⁴	Yes	No	Yes	Yes	Yes	Yes	Yes	Yes
Du et al. ⁴⁵	Not clear	No	Yes	Yes	Yes	Yes	Yes	Yes
Xu et al. ⁴⁶	Yes	No	Yes	Yes	Yes	Yes	Not Clear	Yes
Goyal et al. ⁴⁷	Not Clear	Yes	Yes	Yes	Yes	Yes	Not Clear	Yes
Barrasa et al. ²⁵	Yes	No	Yes	Yes	Yes	Yes	Yes	Yes
Yan et al. ⁴⁸	Yes	No	Not Clear	Yes	Yes	Yes	Yes	Yes
Gupta et al. ⁴⁹	Not Clear	No	Yes	Yes	Yes	Yes	No	Yes
Yang et al. ⁵⁰	Yes	Yes	Yes	Yes	Yes	Yes	Yes	Yes
Han et al. ⁵¹	Not Clear	Yes	Yes	Yes	Yes	Yes	Yes	Yes
Kim et al. ⁵²	Yes	No	Yes	Yes	Yes	Yes	Not Clear	Yes
Wang et al. ⁵³	Yes	Yes	Yes	Yes	Yes	Yes	Yes	Yes
Shi et al. ⁵⁴	Not Clear	No	Yes	Yes	Yes	Yes	Yes	Yes
Yang et al. ²⁶	Not Clear	No	Yes	Yes	Yes	Yes	Yes	Yes

The funnel plots for symptoms and comorbidities are presented in a figure [supplementary figure S76-S105]. Funnel plot found the existence of asymmetry and publication bias for all symptoms and comorbidities. The Egger test of symptoms - fever, dyspnea/shortness of breath, diarrhea, myalgia/muscle ache, nausea, anorexia, pharyngalgia, and hemoptysis were found significant [$p < 0.05$], which suggested the presence of small-study effects. The comorbidities- diabetes, cardiovascular disease, cerebrovascular disease, COPD/lung disease, chronic liver disease, chronic renal disease, chronic kidney disease, and malignancy were found significant [$p < 0.05$] by Egger's test, that recommended the presence of small-study effects.

Figure 2 presents the association of symptoms/comorbidities with the patients' age. Nineteen symptoms and 11 comorbidities were categorized into: symptom group and comorbidity group. The correlation circle represented the between/within-group integration with the patients' age. The longer vectors indicated more influential than others, and the vectors that were close to each other with the same direction indicated a highly positive association [Figure 2]. Vectors that were the opposite direction showed a negative association, and the vectors with an almost 90-degree angle demonstrated no association. The first principal component showed 31.59% variation and the second one showed 20.45% variation in the dataset.

In symptom group, fever, dyspnea/shortness of breath, nausea, vomiting, abdominal pain, dizziness, anorexia, and pharyngalgia were found positively associated with the patients' age. In contrast, sore throat, headache, rhinorrhea, myalgia/muscle ache, fatigue, and hemoptysis were negatively associated with age. Similarly, in the comorbidity group, diabetes, hypertension, coronary heart disease, COPD/lung disease, and ARDS were in the same direction and positively associated with the patient's age. The

symptoms like chest tightness/pain and the comorbidities, including chronic liver and kidney diseases, showed no association with the patients' age.

Considering group integration, the fever, dyspnea/shortness of breath, dizziness, pharyngalgia, and anorexia in the symptom group were positively associated with diabetes, ARDS, and kidney, cardiovascular, and liver diseases in comorbidity group. The symptoms like diarrhea, nausea, vomiting, and abdominal pain were positively associated with hypertension, coronary heart disease, and COPD/lung disease. The symptoms of sore throat, headache, rhinorrhea, myalgia/muscle ache, fatigue, and hemoptysis were positively associated with cerebrovascular disease.

Discussion

The COVID-19 pandemic requires pertinent and precise knowledge of the disease's epidemiological characteristics to contribute to evidence-based clinical practice. But the inquisitive dynamics of transmission and diversities in a clinical presentation are major challenges for early diagnosis and prompt treatment of COVID-19. Considering these realities, we aimed to perform a systematic review and meta-analysis on the prevalence of reported clinical symptoms and comorbidities with proper subgroup analysis. Later, we examined integration between symptoms, comorbidities, and age in patients with COVID-19.

Out of 29 articles, twenty-four [83%] studies performed in China, and five were outside of China. The ratio of infection was reported higher in males than in females [100:82.5], and this result is consistent with previous studies.^{2,6,16,17} It is generally assumed that males are more likely to be infected by bacteria and viruses than females, because of the women's robust innate and adaptive immune responses.^{3,18} Moreover, the patterns of occupation, social communication, and lifestyle expose males to be exposed more to the agent factors of infectious diseases than in females. The mean or median age of the patients

ranged from 40 to 66 years, and we found older people are more susceptible to COVID-19, and our study strongly supports this finding.

We found 33 symptoms and 43 comorbidities in the studies, and our meta-analysis included most reported 19 symptoms and 11 comorbidities. This meta-analysis suggests a prevalence of twelve symptoms and three comorbidities (showed at least 10% pooled prevalence) for the patients with COVID-19. Fever, cough/dry cough, fatigue, dyspnea, anorexia, chest tightness, myalgia, sore throat, rhinorrhea, headache, and diarrhea were highly prevalent symptoms. All studies reported fever [84%] and cough/dry cough [61%] as symptoms consistent with relevant studies across the countries.¹⁹⁻²² The rarely found symptoms in the patients with COVID-19 included haemoptysis, pharyngalgia, dizziness, abdominal pain, chest pain, chill, and nasal obstruction or conjunctive ache, palpitation, malaise and anorexia, conjunctival congestion, throat congestion, tonsil swelling, rash, retching, anosmia, ageusia, snotty, and arthralgia. Previous studies reported hypertension as the most common comorbidity,^{3,7,8} but our study suggests three major comorbidities- acute respiratory distress syndrome (61%), hypertension (23%), and diabetes (12%). Acute respiratory distress syndrome was also found a higher prevalence rate [61%] as reported in three studies in China and one in outside China.²³⁻²⁶

Our systematic review investigated all the reported symptoms and comorbidities of infected patients. The symptoms like anorexia [26%], chest tightness [25%] and rhinorrhea [13%], and one comorbidity, i.e., acute respiratory distress syndrome [61%] were examined with significant prevalence ($p < 0.005$), but they were under-investigated in the published systematic reviews^{6,7,27,28}

We reviewed ten studies for older adults [≥ 50 years] and 19 for younger adults [< 50 years]. The subgroup meta-analysis showed that the older adults were experiencing fatigue/weakness, dyspnea/shortness of

breath, and anorexia comparatively more than the younger adults. In comparison, the prevalence of headache and pharyngalgia were found higher in younger adults. The majority of older adults were suffering from diabetes, hypertension, coronary heart disease, and COPD/lung disease more than younger adults. Human aging is associated with declines in adaptive and innate immunity, and it loses the body's ability to protect against infections.^{29,30} Virologists and clinicians agree that the older adults are more vulnerable to COVID-19, and they present symptoms and comorbid conditions at a higher rate than any other age groups.³¹⁻³⁵

The meta-analysis based on geographical location presented that the patients from outside China scored more cases of diarrhea, fatigue, nausea, sore throat, and dyspnea in comparison to Chinese patients. This variation could be due to the diversity of food habits, environmental, and lifestyle among the countries. The analysis also showed that diabetes, hypertension, cardiovascular disease, coronary heart disease, and ARDS had a higher prevalence outside of China. At the same time, no geographical variation was found for chronic liver disease, malignancy, and COPD/lung disease. As the published reviews and meta-analysis studies found a scarcity of data from outside of China, our study added a discussion on the symptoms and comorbidities from outside of China. This is a significant intellectual contribution to the knowledge of epidemiological and clinical attributes of COVID-19. Additionally, a few systematic reviews were conducted in China, and our study findings are consistent with them.^{14,15}

Our multivariable factor analysis found that the prevalence rate of symptoms and comorbidities were significantly higher in older patients. Symptoms like fever, dyspnea/shortness of breath, dizziness, pharyngalgia, and anorexia were positively correlated with diabetes, ARDS, kidney, cardiovascular, and liver diseases. Symptoms like diarrhea, nausea, vomiting, and abdominal pain were positively associated

with hypertension, coronary heart disease, and COPD/lung disease; sore throat, headache, rhinorrhea, myalgia/muscle ache, fatigue, haemoptysis were positively associated with cerebrovascular disease.

As a unique initiative, this systematic review and meta-analysis epitomize the correlation of symptoms of COVID-19 with comorbidities and the age of the patients. Additional findings of the present study will contribute to designing comprehensive health care to COVID-19 patients. The study findings will also contribute to strengthening prevention and control activities for the COVID-19, considering the global realities of no-availability of any effective vaccine or drug.

Three limitations we faced were: (i) the majority of the studies were from China, and only five from other countries. More studies outside of China could add value in subgroup and multifactor analyses; (ii) we found no data for <10 years; thus, more studies are warranted in the child COVID-19 patients; (iii) a few studies had low sample size.

In conclusion, this systematic review and meta-analysis is the pioneering effort of its kind that reports all frequent symptoms and comorbidities, and correlation with baseline characteristics of the COVID-19 patients. The study exposes comprehensive clinical symptoms and comorbidities associated with COVID-19, which will help the clinicians, health care providers, policymakers, and stakeholders to devise diverse preventive, primitive, and curative strategies for effective management of the COVID-19 patients.

Acknowledgments

We are thankful to the Health Assistant (Md. Saiful Islam) who supported and provided computer and necessary software during the data analysis.

Author contributions

MMR and MJU contributed to the design and conceptualization of the study. MMR, BB and ZF contributed to the screening of studies for inclusion and data extraction. MMR, BB, MJU and MABC searched the databases. MMR and ZF contributed to the analysis and interpretation of the data. MMR, BB and MH contributed to the drafting and formatting of the manuscript. MMR, MH, MABC, MSH, MHS, MZI, ER and MJU contributed to the data extraction, writing, and editing of the manuscript. All authors contributed to the reviewing for important intellectual context and approved of the manuscript to be submitted.

Funding statement

This research did not receive any specific grant from funding agencies in the public, commercial, or not-for-profit sectors.

Competing interests

All authors declare that no competing interests exist.

Data availability statement

The full list of data and the data entries for all included studies is provided in the manuscript. No additional supporting data is available.

Ethics statement

Not Applicable

References

1. WHO. WHO Coronavirus Disease (COVID-19) Dashboard. Geneva: World Health Organization, 2020.
2. Huang C, Wang Y, Li X, Ren L, Zhao J, Hu Y, et al. Clinical features of patients infected with 2019 novel coronavirus in Wuhan, China. *Lancet* 2020;395:497–506.
3. Yang J, Zheng Y, Gou X, Pu K, Chen Z, Guo Q, et al. Prevalence of comorbidities and its effects in patients infected with SARS-CoV-2: a systematic review and meta-analysis. *Int J Infect Dis* 2020;94:91–95.
4. Emami A, Javanmardi F, Pirbonyeh N, Akbari A. Prevalence of Underlying Diseases in Hospitalized Patients with COVID-19: a Systematic Review and Meta-Analysis. *Arch Acad Emerg Med* 2020; 8:e35.
5. Zhang G, Hu C, Luo L, Fang F, Chen Y, Li J, et al. Clinical Features and Treatment of 221 Patients with COVID-19 in Wuhan, China. *SSRN Electron J* 2020; Feb 2. doi: <http://dx.doi.org/10.2139/ssrn.3546095>
6. Qian K, Deng Y, Tai Y, Peng J, Peng H, Jiang L. Clinical Characteristics of 2019 Novel Infected Coronavirus Pneumonia : A Systemic Review and Meta-analysis. *medRxiv* 2020; Feb 17. doi: <https://doi.org/10.1101/2020.02.14.20021535>.
7. Jain V, Yuan J-M. Systematic review and meta-analysis of predictive symptoms and comorbidities for severe COVID-19 infection. *medRxiv* 2020; Mar 16. doi: <https://doi.org/10.1101/2020.03.15.20035360>.
8. Baradaran A, Ebrahimzadeh MH, Baradaran A, Kachooei AR. Prevalence of Comorbidities in COVID-19 Patients : A Systematic Review and Meta-Analysis. *Arch Bone Jt Surg* 2020;247:247–55.

9. Fu L, Wang B, Yuan T, Chen X, Ao Y, Fitzpatrick T, et al. Clinical characteristics of coronavirus disease 2019 (COVID-19) in China: A systematic review and meta-analysis. *J Infect* 2020;80:656–65.
10. Moher D, Liberati A, Tetzlaff J, Altman DG. Preferred Reporting Items for Systematic Reviews and Meta-Analyses: The PRISMA Statement. *PLoS Med* 2009; 6:e1000097.
11. Munn Z, Moola S, Lisy K, Riitano D, Tufanaru C. Methodological guidance for systematic reviews of observational epidemiological studies reporting prevalence and cumulative incidence data. *Int J Evid Based Healthc* 2015;13:147—53.
12. Riley RD, Higgins JPT, Deeks JJ. Interpretation of random effects meta-analyses. *BMJ* 2011;342:964–7.
13. Chowdhury MZI, Rahman M, Akter T, Akhter T, Ahmed A, Shovon MA, et al. Hypertension prevalence and its trend in Bangladesh: evidence from a systematic review and meta-analysis. *Clin Hypertens* 2020; 26: 1-19.
14. De Tayrac M, Lê S, Aubry M, Mosser J, Husson F. Simultaneous analysis of distinct Omics data sets with integration of biological knowledge: Multiple Factor Analysis approach. *BMC Genomics* 2009; 10: 1-17.
15. Rahman MM, Farhana Z, Tani TA, Ullah MO. Integrating Overweight-obesity and Reproductive Factors of Married Women in Bangladesh. *J Gov Innov* 2017; 3:55–72.
16. Wang D, Hu B, Hu C, Zhu F, Liu X, Zhang J, et al. Clinical Characteristics of 138 Hospitalized Patients with 2019 Novel Coronavirus-Infected Pneumonia in Wuhan, China. *JAMA - J Am Med Assoc* 2020;323:1061–9.
17. Liu Y, Huang F, Xu J, Yang P, Qin Y, Cao M, et al. Anti-hypertensive Angiotensin II receptor blockers associated to mitigation of disease severity in elderly COVID-19 patients. *medRxiv*

- 2020; Mar 3. doi: <https://doi.org/10.1101/2020.03.20.20039586>.
18. Jaillon S, Berthenet K, Garlanda C. Sexual Dimorphism in Innate Immunity. *Clin Rev Allergy Immunol* 2019;56:308–21.
 19. Fu L, Wang B, Yuan T, Chen X, Ao Y, Fitzpatrick T, et al. Clinical characteristics of coronavirus disease 2019 (COVID-19) in China: A systematic review and meta-analysis. *J Infect* 2020;80: 656-65.
 20. Xu XW, Wu XX, Jiang XG, Xu KJ, Ying LJ, Ma CL, et al. Clinical findings in a group of patients infected with the 2019 novel coronavirus (SARS-Cov-2) outside of Wuhan, China: Retrospective case series. *BMJ* 2020;368:m606.
 21. Liu K, Fang Y-Y, Deng Y, Liu W, Wang M-F, Ma J-P, et al. Clinical characteristics of novel coronavirus cases in tertiary hospitals in Hubei Province. *Chin Med J (Engl)*. 2020;0:1.
 22. Chen T, Wu D, Chen H, Yan W, Yang D, Chen G, et al. Clinical characteristics of 113 deceased patients with coronavirus disease 2019: retrospective study. *Bmj*. 2020;2:m1091.
 23. Yuan M, Yin W, Tao Z, Tan W, Hu Y. Association of radiologic findings with mortality of patients infected with 2019 novel coronavirus in Wuhan, China. *PLoS One* 2020;15:e0230548.
 24. Chen N, Zhou M, Dong X, Qu J, Gong F, Han Y, et al. Epidemiological and clinical characteristics of 99 cases of 2019 novel coronavirus pneumonia in Wuhan, China: a descriptive study. *Lancet* 2020;395:507–13.
 25. Barrasa H, Rello J, Tejada S, Martín A, Balziskueta G, Vinuesa C, et al. SARS-Cov-2 in Spanish Intensive Care: Early Experience with 15-day Survival In Vitoria. *Anaesth Crit Care Pain Med* 2020; Apr 9. doi: <https://doi.org/10.1016/j.accpm.2020.04.001>.
 26. Yang X, Yu Y, Xu J, Shu H, Xia J, Liu H, et al. Clinical course and outcomes of critically ill patients with SARS-CoV-2 pneumonia in Wuhan, China: a single-centered, retrospective,

- observational study. *Lancet Respir Med* 2020; 8:475–81.
27. Rodriguez-Morales AJ, Cardona-Ospina JA, Gutiérrez-Ocampo E, Villamizar-Peña R, Holguin-Rivera Y, Escalera-Antezana JP, et al. Clinical, laboratory and imaging features of COVID-19: A systematic review and meta-analysis. *Travel Med Infect Dis* 2020;34: 101623.
 28. Cao Y, Liu X, Xiong L, Cai K. Imaging and clinical features of patients with 2019 novel coronavirus SARS-CoV-2: A systematic review and meta-analysis. *J Med Virol* 2020; 1-11.
 29. Fuentes E, Fuentes M, Alarcón M, Palomo I. Immune system dysfunction in the elderly. *An Acad Bras Cienc* 2017;89:285–99.
 30. Weyand CM, Goronzy JJ. Aging of the immune system: Mechanisms and therapeutic targets. *Annals of the American Thoracic Society* 2016; 15: S422–8.
 31. Liu K, Chen Y, Lin R, Han K. Clinical features of COVID-19 in elderly patients: A comparison with young and middle-aged patients. *J Infect* 2020;80: e14-8.
 32. CDC. Coronavirus Disease 2019 (COVID-19), 2020, <https://www.cdc.gov/coronavirus/2019-ncov/symptoms-testing/symptoms.html>(accessed May 25, 2020).
 33. CNN. Seniors with Covid-19 show unusual symptoms, doctors say, 2020, <https://edition.cnn.com/2020/04/23/health/seniors-elderly-coronavirus-symptoms-wellness-partner/index.html>(accessed May 25, 2020).
 34. WHO. Coronavirus disease (COVID-19) outbreak statement – Older people are at highest risk from COVID-19, but all must act to prevent community spread. Europe: World Health Organization, 2020.
 35. Financial Express. Coronavirus pandemic: Elderly more vulnerable to the disease; Here’s what doctors have to say, 2020. <https://www.financialexpress.com/lifestyle/health/coronavirus-pandemic-elderly-more-vulnerable-to-the-disease-heres-what-doctors-have-to->

- say/1938699/(accessed May 24, 2020)].
36. Wan S, Xiang Y, Fang W, Zheng Y, Li B, Hu Y, et al. Clinical Features and Treatment of COVID-19 Patients in Northeast Chongqing. *J Med Virol* 2020;92:797-806.
 37. Jin Zhang J, Dong X, yuan Cao Y, dong Yuan Y, bin Yang Y, qin Yan Y, et al. Clinical characteristics of 140 patients infected with SARS-CoV-2 in Wuhan, China. *Allergy Eur J Allergy Clin Immunol* 2020; 2:1–12.
 38. Zhu W, Xie K, Lu H, Xu L, Zhou S, Fang S. Initial clinical features of suspected coronavirus disease 2019 in two emergency departments outside of Hubei, China. *J Med Virol* 2020; Mar 13: 0–3.
 39. Chen G, Wu D, Guo W, Cao Y, Huang D, Wang H, et al. Clinical and immunologic features in severe and moderate Coronavirus Disease 2019. *J Clin Invest* 2020;130: 2620-9.
 40. Liu Y, Yang Y, Zhang C, Huang F, Wang F, Yuan J, et al. Clinical and biochemical indexes from 2019-nCoV infected patients linked to viral loads and lung injury. *Sci China Life Sci.* 2020;63:364–74.
 41. Mo P, Xing Y, Xiao Y, Deng L, Zhao Q, Wang H, et al. Clinical characteristics of refractory COVID-19 pneumonia in Wuhan, China. *Clin Infect Dis.* 2020; Mar 16: ciaa270.
 42. Jin X, Lian JS, Hu JH, Gao J, Zheng L, Zhang YM, et al. Epidemiological, clinical and virological characteristics of 74 cases of coronavirus-infected disease 2019 (COVID-19) with gastrointestinal symptoms. *Gut* 2020;69:1002-9.
 43. Guan W, Ni Z, Hu Y, Liang W, Ou C, He J, et al. Clinical Characteristics of Coronavirus Disease 2019 in China. *N Engl J Med* 2020;382:1708-20.
 44. Zhou Z, Zhao N, Shu Y, Han S, Chen B, Shu X. Effect of gastrointestinal symptoms on patients infected with COVID-19. *Gastroenterology* 2020; 158: 2294-7.

45. Du Y, Tu L, Zhu P, Mu M, Wang R, Yang P, et al. Clinical Features of 85 Fatal Cases of COVID-19 from Wuhan: A Retrospective Observational Study. *Am J Respir Crit Care Med* 2020;201:1372-9.
46. Xu X, Yu C, Qu J, Zhang L, Jiang S, Huang D, et al. Imaging and clinical features of patients with 2019 novel coronavirus SARS-CoV-2. *Eur J Nucl Med Mol Imaging*. 2020;47:1275-80.
47. Goyal P, Choi JJ, Pinheiro LC, Schenck EJ, Chen R, Jabri A, et al. Clinical Characteristics of Covid-19 in New York City. *N Engl J Med*. 2020;382: 2372-74.
48. Yan CH, Faraji F, Prajapati DP, Boone CE, DeConde AS. Association of chemosensory dysfunction and Covid-19 in patients presenting with influenza-like symptoms. *Int Forum Allergy Rhinol* 2020;Apr 12: 1-8.
49. Gupta N, Agrawal S, Ish P, Mishra S, Gaiind R, Usha G, et al. Clinical and epidemiologic profile of the initial COVID-19 patients at a tertiary care centre in India. *Monaldi Arch chest Dis*. 2020 Apr 10;90:193–6.
50. Yang W, Cao Q, Qin L, Wang X, Cheng Z, Pan A, et al. Clinical characteristics and imaging manifestations of the 2019 novel coronavirus disease (COVID-19):A multi-center study in Wenzhou city, Zhejiang, China. *J Infect* 2020; 80:388–93.
51. Han C, Duan C, Zhang S, Spiegel B, Shi H, Wang W, et al. Digestive Symptoms in COVID-19 Patients With Mild Disease Severity: Clinical Presentation, Stool Viral RNA Testing, and Outcomes. *Am J Gastroenterol* 2020; 115:916–23.
52. Kim ES, Chin BS, Kang CK, Kim NJ, Kang YM, Choi JP, et al. Clinical course and outcomes of patients with severe acute respiratory syndrome coronavirus 2 infection: A preliminary report of the first 28 patients from the korean cohort study on COVID-19. *J Korean Med Sci* 2020;35:e142.

53. Wang L, He W, Yu X, Hu D, Bao M, Liu H, et al. Coronavirus disease 2019 in elderly patients: Characteristics and prognostic factors based on 4-week follow-up. *J Infect* 2020;80: 639-45.
54. Shi H, Han X, Jiang N, Cao Y, Alwalid O, Gu J, et al. Radiological findings from 81 patients with COVID-19 pneumonia in Wuhan, China: a descriptive study. *Lancet Infect Dis* 2020; 20:425–34.

medRxiv preprint doi: <https://doi.org/10.1101/2020.08.19.20177980>; this version posted August 22, 2020. The copyright holder for this preprint (which was not certified by peer review) is the author/funder, who has granted medRxiv a license to display the preprint in perpetuity. It is made available under a [CC-BY-NC-ND 4.0 International license](#) .



PRISMA 2009 Flow Diagram

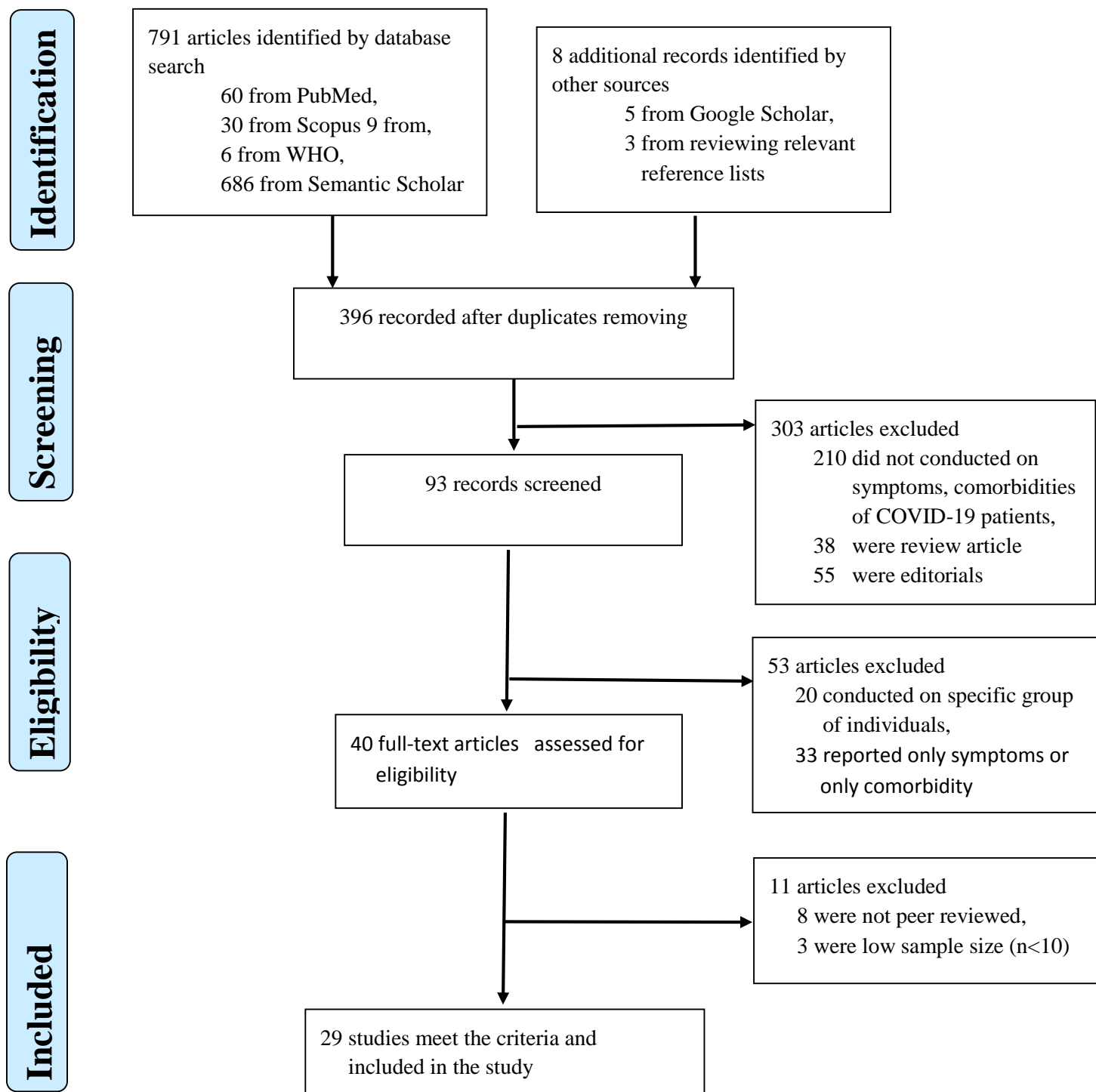


Figure1. Preferred reporting items for systematic reviews and meta-analyses (PRISMA) flow diagram for the study selection process.

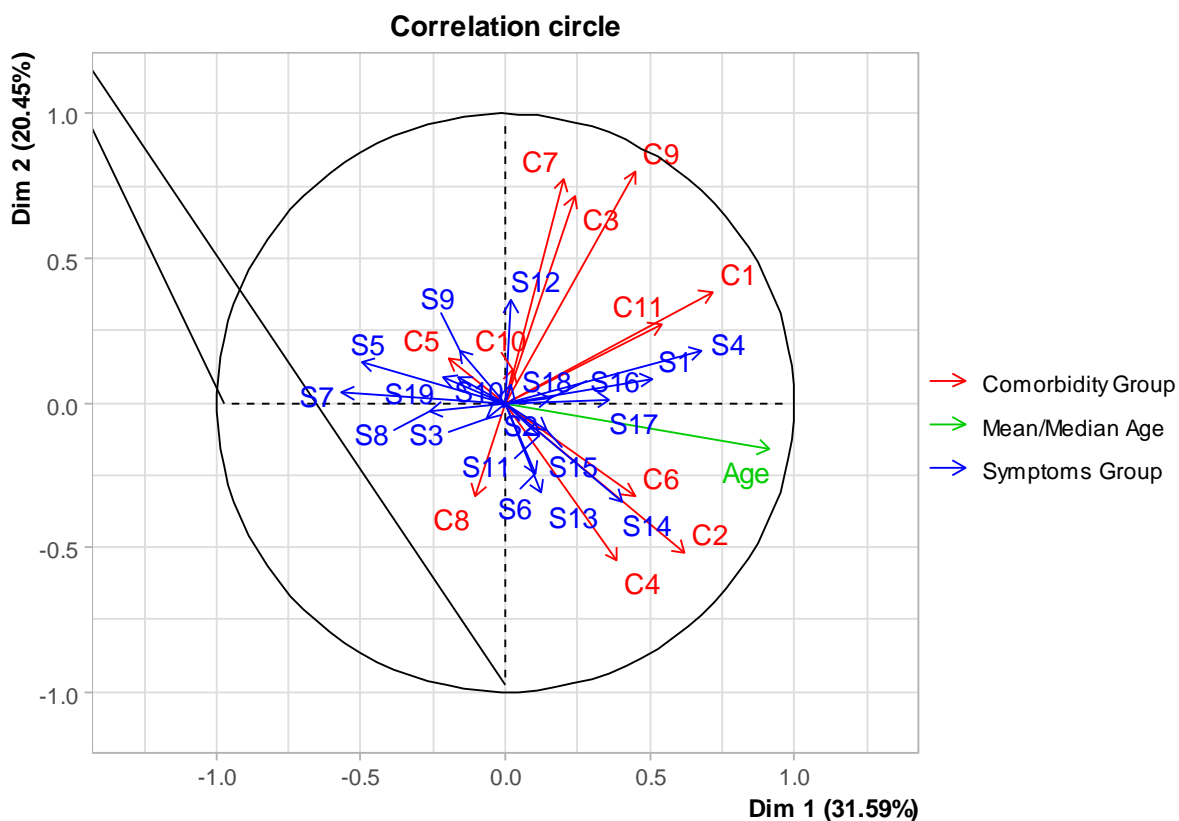


Figure 2. Group Integration [correlation] of symptoms and comorbidities with age of the COVID-19 patients. [**Symptom Group:** S1: Fever, S2: Cough/Dry cough, S3: Fatigue, S4: Dyspnea/Shortness of breath, S5: Headache, S6: Diarrhea, S7: Sore Throat, S8: Myalgia/Muscle Ache, S9: Rhinorrhea, S10: Sputum Production/Expectoration, S11: Chest tightness, S12: Chest pain, S13: Nausea, S14: Vomiting, S15: Abdominal Pain, S16: Dizziness, S17: Anorexia, S18: Pharyngalgia, S19: Haemoptysis. **Comorbidity Group:** C1: Diabetes, C2: Hypertension, C3: Cardiovascular Disease, C4: Coronary heart disease, C5: Cerebrovascular disease, C6: COPD/Lung disease, C7: Chronic liver disease, C8: Chronic Renal disease, C9: Chronic Kidney disease, C10: Malignancy, C11: ARDS.]