

1 **Endemic Chikungunya Fever in Kenyan Children**

2 Doris K. Nyamwaya<sup>1,a</sup>, Mark Otiende<sup>1,a</sup>, Donwilliams O. Omuoyo<sup>1</sup>, George Githinji<sup>1</sup>, Henry K.  
3 Karanja<sup>1</sup>, John N. Gitonga<sup>1</sup>, Zaydah de Laurent<sup>1</sup>, James R. Otieno<sup>1</sup>, Rosemary Sang<sup>2</sup>, Evelyn  
4 Kamau<sup>1</sup>, Stanley Cheruiyot<sup>1</sup>, Edward Otieno<sup>1</sup>, Charles N. Agoti<sup>1</sup>, Philip Bejon<sup>1,3</sup>, Samuel M.  
5 Thumbi<sup>4,5,6</sup>, George M. Warimwe<sup>1,3\*</sup>

6

7 <sup>1</sup>KEMRI-Wellcome Trust Research Programme, P.O. Box 230-80108, Kilifi, Kenya; <sup>2</sup>KEMRI-Centre  
8 for Virus Research, Nairobi, Kenya; <sup>3</sup>Centre for Tropical Medicine and Global Health, University of  
9 Oxford, Old Road Campus, NDM Research Building, Oxford OX3 7FZ, UK; <sup>4</sup>Paul G Allen School  
10 for Global Animal Health, Washington State University, Pullman, WA 99164-7090, USA; <sup>5</sup>Centre for  
11 Global Health Research, Kenya Medical Research Institute, P.O. Box 1578-4100, Kisumu, Kenya; <sup>6</sup>  
12 Institute of Tropical and Infectious Diseases, University of Nairobi, P.O Box 19676 – 00202  
13 Nairobi.

14

15 <sup>a</sup>contributed equally

16 \*Correspondence:

17 George Warimwe, KEMRI-Wellcome Trust Research Programme, P.O. Box 230-80108, Kilifi,  
18 Kenya

19 Email: [gwarimwe@kemri-wellcome.org](mailto:gwarimwe@kemri-wellcome.org); Phone: +254(0)709 983 000

20

## 21 **ABSTRACT**

22 *Background.* Chikungunya virus (CHIKV) was first identified in Tanzania in 1952. Several epidemics  
23 including East Africa are described, but there are no descriptions of longitudinal surveillance of  
24 endemic disease. Here, we estimate the incidence of CHIKV and describe viral phylogeny in coastal  
25 Kenya.

26 *Methods.* Over a 5-year period (2014-2018), 11,708 febrile illnesses in 5,569 children visiting two  
27 primary healthcare facilities linked to a demographic surveillance system in coastal Kenya were  
28 recorded and blood samples obtained. Reverse-transcriptase PCR was used to identify CHIKF cases  
29 in 3,500 children randomly selected from the 5,569 children.

30 *Results.* We found CHIKF to be endemic in this setting, associated with 12.7% (95% CI 11.60, 13.80)  
31 of all febrile presentations to primary healthcare. The prevalence of CHIKV infections among  
32 asymptomatic children in a community survey was 0.7% (95% CI 0.22, 2.12). CHIKF incidence  
33 among children <1 year of age was 1703 cases/100,000-person years and 46 cases/100,000-person years  
34 among children aged  $\geq 10$  years. Recurrent CHIKF episodes, associated with fever and viraemia, were  
35 observed among 19 of 170 children with multiple febrile episodes during the study period and  
36 confirmed by genome sequencing. All sequenced viral genomes mapped to the ECSA genotype albeit  
37 distinct from CHIKV strains associated with the 2004 East African epidemic.

38 *Conclusions.* CHIKF may be a substantial public health burden in primary healthcare on the East  
39 African coast outside epidemic years, and recurrent infections are common.

40

## 41 **BACKGROUND**

42 Chikungunya fever (CHIKF) is a zoonotic mosquito-borne febrile illness characterised by acute, often  
43 chronic, debilitating polyarthralgia and polyarthritis that can last for months to years [1-3]. The  
44 disease is caused by chikungunya virus (CHIKV), a positive sense RNA virus in the family  
45 *Togaviridae* that was first isolated from a febrile patient in Tanzania in 1952 [4]. CHIKV transmission

46 between humans is mainly mediated by the geographically widespread *Aedes aegypti* and *Ae.*  
47 *albopictus* mosquitoes, with geographic spread and spillover from sylvatic transmission cycles in  
48 monkeys thought to account for the periodic re-emergence of human disease outbreaks [5-8].

49 The CHIKV genome is approximately 11.8kb in length and encodes four non-structural proteins  
50 (nsP1 to nsP4) required for viral replication, three major structural proteins (the capsid protein, and  
51 envelope proteins E1 and E2), and two small polypeptides (6K/TF and E3) [9]. Exposure to CHIKV  
52 results in acquisition of protective virus neutralising antibodies that target the E2 protein, and is the  
53 basis for ongoing efforts to develop CHIKF vaccines [10, 11]. Phylogenetic studies have defined three  
54 CHIKV genotypes, namely East, Central and Southern Africa (ECSA), West Africa, and the Asian  
55 genotype [12]. In 2004, CHIKV re-emerged in coastal Kenya causing one of the largest epidemics on  
56 record, affecting millions of people as it spread along the Indian Ocean islands, India, southeast Asia  
57 and Europe [8, 13, 14]. This epidemic was associated with emergence of the Indian Ocean Lineage  
58 (IOL), which mapped within the ECSA genotype and included viruses with adaptive mutations in the  
59 E1 protein that increased their transmissibility by *Aedes albopictus* mosquitoes [15, 16].

60 CHIKF epidemics are now frequently reported globally [8, 17], but despite its original discovery and  
61 later re-emergence in East Africa, very little is known regarding inter-epidemic CHIKV exposure in  
62 the region. CHIKF cases have previously been detected in children in Kenya and Tanzania during  
63 inter-epidemic periods [18-20], which together with the high anti-CHIKV antibody seroprevalence  
64 observed in these settings suggest endemic CHIKV transmission [21, 22]. To address these  
65 knowledge gaps, we conducted a primary healthcare-based study linked to demographic surveillance  
66 and community survey to estimate the prevalence and incidence of CHIKV infections among children  
67 in Kilifi, coastal Kenya. Our study period, 2014 to 2018, included the most recent CHIKF epidemic  
68 year, 2016 [23], allowing an unprecedented assessment of exposure risk and disease burden before,  
69 during and after a CHIKF epidemic in this setting.

70

## 71 **METHODS**

### 72 **Study population**

73 We conducted a population-based observational cohort study between March 2014 and October 2018  
74 at two dispensaries, Ngerenya and Pingilikani, based within the Kilifi Health Demographic  
75 Surveillance System (KHDSS) [24]. The KHDSS covers an area of 891km<sup>2</sup> with approximately  
76 290,000 residents that are enumerated every four months at the household level [24]. Ngerenya and  
77 Pingilikani have different rates of mosquito-borne pathogen exposure as inferred from previous  
78 malaria studies; Ngerenya and environs experiences low intensity malaria transmission, whereas  
79 malaria transmission around Pingilikani is moderate [25]. However, no studies on arbovirus exposure  
80 had been conducted previously. Our approach was to screen children presenting with fever (axillary  
81 temperature of  $\geq 37.5^{\circ}\text{C}$ ) at the dispensaries for CHIKV infection by reverse-transcriptase polymerase  
82 chain reaction (RT-PCR). Children presenting at the dispensaries were linked to the KHDSS data  
83 using a unique identifier, allowing us to estimate incidence in the population, and to determine the  
84 influence of various demographic variables on the incidence estimates. Ethical approval was provided  
85 by the Kenya Medical Research Institute Scientific and Ethics Review Unit (SSC Nos. 3296, 2617  
86 and 3149).

### 87 **CHIKV RT-PCR assays**

88 CHIKV infection was defined as detection of CHIKV viral RNA by RT-PCR using a published  
89 primer-probe set targeting the CHIKV non-structural protein 1 (nsP1) region[26], namely CHIKV 874  
90 (5'-AAAGGGCAAACCTCAGCTTCAC-3'), CHIKV 961 (5'-GCCTGGGCTCATCGTTATTC-3')  
91 and CHIKV 899-FAM (5'-FAM-CGCTGTGATACAGTGGTTTCGTGTG-TAMRA-3'). Briefly,  
92 100 $\mu\text{l}$  of finger-prick blood samples collected at presentation to the dispensaries, and stored at  $-80^{\circ}\text{C}$ ,  
93 was used for total RNA isolation using TRIzol<sup>TM</sup> Reagent (ThermoFisher) as per manufacturer  
94 instructions. Presence of CHIKV viral RNA was then determined using the QuantiFast RT-PCR Kit  
95 (Qiagen) in a 25 $\mu\text{l}$  reaction with primers and probe at a final concentration of 100nM and 20nM,  
96 respectively, and 5 $\mu\text{l}$  total RNA template. RT-PCR assays were done on a 7500 Real-Time PCR

97 System (Applied Biosystems) with cycling conditions as follows: 50°C for 20 minutes, 95°C for 15  
98 minutes, followed by 45 cycles of 94°C for 15 seconds and 60°C for 1 minute. A second confirmatory  
99 screen was performed on some of the RT-PCR positive samples using an assay targeting the CHIKV  
100 nsP4 region as previously described[27]. For both assays, a positive result was defined as a cycle  
101 threshold (Ct) value of <40. Viral RNA from a cultured CHIKV isolate obtained from a febrile  
102 Kenyan patient was used as a positive control, while RT-PCR mastermix without template was used  
103 as a negative control.

#### 104 **CHIKV genome sequencing and analysis**

105 RT-PCR positive CHIKV samples were sequenced using the Nanopore MinION technology following  
106 PCR amplification using methods described in the PrimalSeq approach<sup>17</sup>. Full details of our  
107 sequencing and bioinformatics workflow can be found in the Supplementary Material. In brief,  
108 CHIKV-specific multiplex primers were designed using the Primal Scheme software and used for pre-  
109 enrichment of CHIKV viral RNA in the samples using a multiplex PCR method. Barcodes and  
110 sequencing adapters were ligated into each sample, after which all samples were pooled into a single  
111 reaction tube and the library loaded on to a MinION sequencing device for sequencing. The sequences  
112 generated in this study (N=10) were deposited in GenBank, accession numbers: MT526796-  
113 MT526807. MUSCLE was used to align the Kilifi CHIKV genome sequences with those available in  
114 GenBank from other geographical locations (see Supplementary Material). Maximum Likelihood  
115 phylogenies were reconstructed from the alignment using RAxML[28] using the GTR substitution  
116 model with 4 gamma categories (GTR+G4) and visualized in FigTree v1.4.4.

#### 117 **Sampling and statistical analyses**

118 We selected a random sample of 3500 out of 5,669 children who visited the two dispensaries with  
119 febrile illness. Associations between available demographic variables and CHIKV RT-PCR positivity  
120 were assessed using odds ratios estimated using logistic regression models. CHIKV incidence within  
121 the dispensary catchment area, defined as radius of 5km from each dispensary, was expressed per  
122 100,000 person-years observed and incidence rate ratios (IRRs) comparing various demographic

123 variables determined by Poisson regression. Univariate analyses were performed using Chi2 test  
124 (categorical variables) or the Mann-Whitney U test (continuous variables). All statistical analyses  
125 were carried out in Stata™ version 15 with a two-sided p value <0.05 used for statistical significance.

126

## 127 **RESULTS**

### 128 **CHIKV infections are common among children in coastal Kenya**

129 Between March 2014 and October 2018, there were 29,819 visits by children aged up to 15 years to  
130 the two dispensaries (6,746 in Ngerenya, 23,073 in Pingilikani), of which 13,696 were febrile (Figure  
131 1). Of the 13,696 fevers, 1,256 lacked a unique patient identifier and 732 samples were missing. After  
132 these exclusions, there were 11,708 febrile visits from a total of 5,569 children (median 1 febrile visit  
133 per child during the study period, IQR 1 - 2) eligible for CHIKV RT-PCR analysis (Figure 1).

134 A sample of 3,500 febrile children out of the 5,569 across the two dispensaries were randomly  
135 selected and samples from their first (index) febrile episode during the study period screened for  
136 CHIKV infection (Figure 1). The median age of these 3,500 children was 3.1 years (IQR 1.3 – 6.4),  
137 with 1,701 being resident in Ngerenya and 1,799 in Pingilikani, respectively (Figure 1). Our study  
138 period, 2014 to 2018, was at least 10 years since the 2004 CHIKF epidemic occurred in Kenya, with  
139 ~90% our study population having been born after that epidemic.

140 Of the 3,500 children 443 were RT-PCR positive (12.7%, 95% CI 11.60, 13.80; Table 1), with RT-  
141 PCR positivity being twice as frequent in Ngerenya (16.7%, 95% CI 15.00, 18.54) than in Pingilikani  
142 (8.8%, 95% CI 7.61, 10.24). Most of the 443 CHIKF cases had a clinical diagnosis of upper  
143 respiratory tract infection (URTI) but in no instance was a diagnosis of CHIKF assigned (Table 1).  
144 The treatments prescribed for the management of CHIKF cases were comparable to those for other  
145 causes of fever at the dispensaries, but fewer antimalarials were prescribed for CHIKF cases (Table  
146 1). CHIKF case prevalence was highest in 2016 (23.1%), when an epidemic was reported in Kenya  
147 [23], and was significantly lower in the pre- and post-epidemic years where it ranged between 5% and

148 8% (Table 1). In contrast, the prevalence of asymptomatic CHIKV infections estimated by cross-  
149 sectional sampling of a different group of 435 children in the same study location in 2016 was 0.7%  
150 (95% CI 0.22, 2.12); this yielded a clinical-to-asymptomatic CHIKV infection ratio of 18:1 during the  
151 epidemic year.

## 152 **Incidence of CHIKF in the community**

153 We calculated the incidence of CHIKF restricting our analysis to children aged up to 15 years whose  
154 residence was within the dispensary catchment area. This represented a total of 139,840 person-years  
155 of observation (pyo) over the study period at both locations. For the numerator (CHIKF cases), we  
156 applied the observed CHIKV RT-PCR positivity rates (Table 1) to the total number of febrile children  
157 presenting to the respective dispensary on the assumption that the case positive rate among the 3,500  
158 we randomly selected would hold true for the remaining 2,069 samples.

159 The incidence of CHIKF during the study period was 340 cases/100,000 pyo (95% CI 310, 373; Table  
160 2). However, an inverse relationship was evident between CHIKF incidence and age, consistent with  
161 acquisition of protective immunity against disease due to ongoing CHIKV exposure in this setting  
162 (Table 2). CHIKF incidence was significantly higher in Ngerenya as compared to Pingilikani;  
163 furthermore, while an increase in incidence was observed in Ngerenya during the 2016 CHIKF  
164 epidemic, such an increase was not observed in Pingilikani where CHIKF incidence had been  
165 gradually declining since 2014 (Table 2). Marked seasonality in CHIKF incidence was observed in  
166 Pingilikani but not Ngerenya (Table 2) suggesting potential differences in ecological risk factors of  
167 disease. A negative correlation was observed between CHIKF incidence and residential distance from  
168 the dispensary at both locations, which likely reflected access to care (Table 2) as has been previously  
169 reported for malaria incidence [29].

## 170 **Recurrent CHIKF episodes**

171 We determined whether recurrent CHIKF episodes occurred in our study population. To do this we  
172 identified all 443 children with first or only episodes of CHIKF and screened all subsequent samples

173 collected during febrile episodes during the period 2014-2018. We defined recurrent episodes as  
174 CHIKV RT-PCR positivity during these subsequent febrile dispensary visits. Of the 443 index cases,  
175 170 presented to the dispensary with fever on at least one other occasion during the study period,  
176 contributing a total of 320 subsequent febrile dispensary visits with varying durations since the  
177 corresponding index CHIKF case (Figure 1). Of the 170 children, 19 (11.2%, 95% CI 6.86, 16.90)  
178 were CHIKV RT-PCR positive on at least one subsequent febrile episode (Figures 1 and 2). The  
179 duration between the index and the subsequent RT-PCR positive febrile episodes ranged from 2 to 43  
180 months (Figure 2, and Supplementary Material Table S2). Eighteen of the 19 CHIKV RT-PCR  
181 positive cases were detected during or after the 2016 CHIKF epidemic year. Neither age, sex nor  
182 geographic location were statistically associated with recurrent episodes of CHIKF (Chi2 test  $p>0.05$   
183 for all) and the RT-PCR Ct values and clinical diagnoses were comparable between the index case  
184 and corresponding subsequent timepoints (Supplementary Material Figure S2 and Table S2).

### 185 **Viral phylogeny**

186 We attempted to sequence all index and subsequent RT-PCR positive samples from the 19 children  
187 with recurrent CHIKF episodes (Figure 2). Complete and partial genome coding sequences were  
188 generated from 10 samples, including an additional index sample with a low Ct value (Ct=19) from a  
189 child who did not experience recurrent CHIKF episodes during the study period. All CHIKV genomes  
190 generated in this study mapped to the ECSA genotype, albeit distinct from the clade containing the  
191 IOL strains that emerged during the 2004 epidemic and the clade including genomes from CHIKF  
192 patients sampled in Mandera, northern Kenya, during the 2016 epidemic (Figure 3). The E1 A226V  
193 mutation, associated with adaptation and increased transmissibility by *Aedes albopictus* [15], was  
194 absent from all sequences sampled in Kenya [23]. Time-resolved phylogenies showed strong temporal  
195 clustering of CHIKV sequences from coastal Kenya that may suggest antigenic changes over time  
196 driven by acquisition of herd immunity (Figure 3). Index-recurrent episode case genome sequence  
197 pairs were available for four children with respective time intervals of 2.9, 3.5, 22.3 and 28.3 months  
198 between the index and recurrent episodes (Figure 3). The degree of relatedness of the sequence pairs



199 was similarly time-dependent, with the sequence pair with the longest time interval (28.3 months)  
200 being most divergent (Figure 3).

201

## 202 **DISCUSSION**

203 In summary, we find that CHIKF is endemic in coastal Kenya with the case burden being particularly  
204 high in young children aged <1 year. Our population-based cohort approach in primary healthcare  
205 facilities could detect an increase in CHIKF cases during the 2016 epidemic, supporting the utility of  
206 such a surveillance framework in the early detection of CHIKF epidemics. During the epidemic year  
207 an increase in CHIKF incidence was only noted in Ngerenya while that in Pingilikani (located  
208 approximately 40km south of Ngerenya) had been declining [25]; in our dataset, clinical malaria  
209 accounted for 57% of all fevers in Pingilikani but only 5% in Ngerenya, while URTI accounted for  
210 70% of all fevers in Ngerenya but only 10% in Pingilikani. We observed significant CHIKF  
211 incidence in both locations, and an inverse relationship between CHIKF incidence and age was  
212 evident at both locations. This suggests that immunity is acquired in older children, and that CHIKF  
213 transmission is significant in both locations despite the varying malaria ecology.

214 Consistent with previous reports of CHIKF in children in East Africa [19, 30], none of the patients in  
215 this study had a clinical diagnosis of CHIKF or reported symptoms of joint pathology. Nineteen  
216 children were CHIKV RT-PCR positive during subsequent febrile episodes, with viral genome  
217 sequences from these recurrent episodes not showing high degrees of relatedness to the index case.  
218 Chronic relapsing and remitting CHIKF symptoms have been observed in adult patients during  
219 previous epidemics, as an inflammatory post-infectious arthropathy [31-33] with viral RNA detected  
220 in the joint tissues in one study [34]. However, we are aware of no reports of recurrent discrete  
221 CHIKF episodes associated with reinfection. This may simply be due to the rarity of longitudinal  
222 surveillance studies for CHIKF, particularly in children. In our study, the relatedness of virus  
223 genomes from first and second infections in the same child was similar to the relatedness of virus  
224 genomes from different children, suggesting that these were reinfections rather than relapses.

225 Neutralising antibodies that develop following CHIKV infection have been shown to correlate with  
226 decreased risk of clinical illness in a longitudinal study in the Phillipines [35, 36], though CHIKF  
227 cases in that study were all due to the Asian CHIKV genotype. The possibility that the ECSA  
228 genotype viruses, which tend to be more diverse [12] and associated with a higher clinical disease  
229 burden than Asian genotypes [37], results in a variable immune response in children in East Africa  
230 needs to be ruled out. The inverse relationship between age and incidence of CHIKF suggests that  
231 there is an acquisition of protective immunity, although the recurrent infections suggest that this  
232 immunity is not rapidly acquired in some children.

233 Only finger-prick whole blood samples for RT-PCR analysis were available for this study, thus  
234 precluding any immunological work. Future longitudinal studies with serial blood sampling for  
235 immunological assays will help determine the natural course of infection, including duration of  
236 viraemia, and identify host and viral factors that may underlie the occurrence of CHIKF relapses in  
237 coastal Kenya.

238 Consistent with other reports of CHIKV strains circulating in East Africa [12, 23], the viral genomes  
239 generated in this study all mapped to the ECSA genotype. Further, in contrast to the 2016 CHIKF  
240 epidemic viruses from Mandera (northern Kenya) that formed a single well-supported clade,  
241 sequences from coastal Kenya were highly diverse and fell within multiple well-supported clades that  
242 whose divergence increased with time. Together, these data suggest ongoing endemic CHIKV  
243 transmission at the Kenyan coast possibly sustained through frequent emergence of diverse CHIKV  
244 strains from local sylvatic transmission cycles [6].

245 Our data and that from others in the region [30] further reinforce the need for inclusion of CHIKF  
246 high on the list of differential diagnoses to consider when faced with a febrile child at primary  
247 healthcare facilities in coastal Kenya. Access to rapid diagnostics would be of value in antibiotic  
248 stewardship, and control of transmission in the community would substantially reduce the burden on  
249 healthcare facilities. Further studies on the associated clinical outcomes, including the incidence of

250 severe ('atypical') manifestations of CHIKF, should help determine the wider public health

251 significance of CHIKF in coastal Kenya.

252

### 253 **FUNDING**

254 This work was commissioned by the National Institute for Health Research (NIHR) Global Health

255 Research programme [16/136/33] using UK aid from the UK Government. The views expressed in

256 this publication are those of the authors and not necessarily those of the NIHR or the Department of

257 Health and Social Care. GMW is supported by an Oak foundation fellowship and a Wellcome Trust

258 grant [grant number 203077\_Z\_16\_Z].

259

### 260 **CONFLICT OF INTEREST**

261 All authors declare no conflicts of interest.

262

### 263 **ACKNOWLEDGEMENTS**

264 This manuscript was submitted for publication with permission from the Director of the Kenya

265 Medical Research Institute.

266

### 267 **REFERENCES**

268 1. Robinson MC. An epidemic of virus disease in Southern Province, Tanganyika Territory, in

269 1952-53. I. Clinical features. *Trans R Soc Trop Med Hyg* **1955**; 49(1): 28-32.

- 270 2. Lumsden WH. An epidemic of virus disease in Southern Province, Tanganyika Territory, in  
271 1952-53. II. General description and epidemiology. *Trans R Soc Trop Med Hyg* **1955**; 49(1):  
272 33-57.
- 273 3. Tritsch SR, Encinales L, Pacheco N, et al. Chronic joint pain 3 years after chikungunya virus  
274 infection largely characterized by relapsing-remitting symptoms. *J Rheumatol* **2019**.
- 275 4. Ross RW. The Newala epidemic. III. The virus: isolation, pathogenic properties and  
276 relationship to the epidemic. *J Hyg (Lond)* **1956**; 54(2): 177-91.
- 277 5. Althouse BM, Guerbois M, Cummings DAT, et al. Role of monkeys in the sylvatic cycle of  
278 chikungunya virus in Senegal. *Nat Commun* **2018**; 9(1): 1046.
- 279 6. Eastwood G, Sang RC, Guerbois M, Taracha ELN, Weaver SC. Enzootic Circulation of  
280 Chikungunya Virus in East Africa: Serological Evidence in Non-human Kenyan Primates.  
281 *Am J Trop Med Hyg* **2017**; 97(5): 1399-404.
- 282 7. Weaver SC, Lecuit M. Chikungunya virus and the global spread of a mosquito-borne disease.  
283 *N Engl J Med* **2015**; 372(13): 1231-9.
- 284 8. Wahid B, Ali A, Rafique S, Idrees M. Global expansion of chikungunya virus: mapping the  
285 64-year history. *Int J Infect Dis* **2017**; 58: 69-76.
- 286 9. Voss JE, Vaney MC, Duquerroy S, et al. Glycoprotein organization of Chikungunya virus  
287 particles revealed by X-ray crystallography. *Nature* **2010**; 468(7324): 709-12.
- 288 10. Rezza G, Weaver SC. Chikungunya as a paradigm for emerging viral diseases: Evaluating  
289 disease impact and hurdles to vaccine development. *PLoS Negl Trop Dis* **2019**; 13(1):  
290 e0006919.
- 291 11. Gouglas D, Thanh Le T, Henderson K, et al. Estimating the cost of vaccine development  
292 against epidemic infectious diseases: a cost minimisation study. *Lancet Glob Health* **2018**;  
293 6(12): e1386-e96.
- 294 12. Volk SM, Chen R, Tsetsarkin KA, et al. Genome-scale phylogenetic analyses of chikungunya  
295 virus reveal independent emergences of recent epidemics and various evolutionary rates. *J*  
296 *Viro* **2010**; 84(13): 6497-504.

- 297 13. Chretien JP, Anyamba A, Bedno SA, et al. Drought-associated chikungunya emergence along  
298 coastal East Africa. *Am J Trop Med Hyg* **2007**; 76(3): 405-7.
- 299 14. Sergon K, Njuguna C, Kalani R, et al. Seroprevalence of Chikungunya virus (CHIKV)  
300 infection on Lamu Island, Kenya, October 2004. *Am J Trop Med Hyg* **2008**; 78(2): 333-7.
- 301 15. Tsetsarkin KA, Vanlandingham DL, McGee CE, Higgs S. A single mutation in chikungunya  
302 virus affects vector specificity and epidemic potential. *PLoS Pathog* **2007**; 3(12): e201.
- 303 16. Weaver SC, Forrester NL. Chikungunya: Evolutionary history and recent epidemic spread.  
304 *Antiviral Res* **2015**; 120: 32-9.
- 305 17. Nsoesie EO, Kraemer MU, Golding N, et al. Global distribution and environmental suitability  
306 for chikungunya virus, 1952 to 2015. *Euro Surveill* **2016**; 21(20).
- 307 18. Kajeguka DC, Kaaya RD, Mwakalinga S, et al. Prevalence of dengue and chikungunya virus  
308 infections in north-eastern Tanzania: a cross sectional study among participants presenting  
309 with malaria-like symptoms. *BMC Infect Dis* **2016**; 16: 183.
- 310 19. Chipwaza B, Mugasa JP, Selemani M, et al. Dengue and Chikungunya fever among viral  
311 diseases in outpatient febrile children in Kilosa district hospital, Tanzania. *PLoS Negl Trop*  
312 *Dis* **2014**; 8(11): e3335.
- 313 20. Hertz JT, Munishi OM, Ooi EE, et al. Chikungunya and dengue fever among hospitalized  
314 febrile patients in northern Tanzania. *Am J Trop Med Hyg* **2012**; 86(1): 171-7.
- 315 21. Weller N, Clowes P, Dobler G, et al. Seroprevalence of alphavirus antibodies in a cross-  
316 sectional study in southwestern Tanzania suggests endemic circulation of chikungunya. *PLoS*  
317 *Negl Trop Dis* **2014**; 8(7): e2979.
- 318 22. LaBeaud AD, Banda T, Brichard J, et al. High rates of o'nyong nyong and Chikungunya virus  
319 transmission in coastal Kenya. *PLoS Negl Trop Dis* **2015**; 9(2): e0003436.
- 320 23. Maljkovic Berry I, Eyase F, Pollett S, et al. Global Outbreaks and Origins of a Chikungunya  
321 Virus Variant Carrying Mutations Which May Increase Fitness for *Aedes aegypti*:  
322 Revelations from the 2016 Mandera, Kenya Outbreak. *Am J Trop Med Hyg* **2019**; 100(5):  
323 1249-57.

- 324 24. Scott JA, Bauni E, Moisi JC, et al. Profile: The Kilifi Health and Demographic Surveillance  
325 System (KHDSS). *Int J Epidemiol* **2012**; 41(3): 650-7.
- 326 25. Mogeni P, Williams TN, Fegan G, et al. Age, Spatial, and Temporal Variations in Hospital  
327 Admissions with Malaria in Kilifi County, Kenya: A 25-Year Longitudinal Observational  
328 Study. *PLoS Med* **2016**; 13(6): e1002047.
- 329 26. Lanciotti RS, Kosoy OL, Laven JJ, et al. Chikungunya virus in US travelers returning from  
330 India, 2006. *Emerg Infect Dis* **2007**; 13(5): 764-7.
- 331 27. Pabbaraju K, Wong S, Gill K, Fonseca K, Tipples GA, Tellier R. Simultaneous detection of  
332 Zika, Chikungunya and Dengue viruses by a multiplex real-time RT-PCR assay. *J Clin Virol*  
333 **2016**; 83: 66-71.
- 334 28. Kozlov AM, Darriba D, Flouri T, Morel B, Stamatakis A. RAxML-NG: a fast, scalable and  
335 user-friendly tool for maximum likelihood phylogenetic inference. *Bioinformatics* **2019**;  
336 35(21): 4453-5.
- 337 29. Bejon P, Williams TN, Nyundo C, et al. A micro-epidemiological analysis of febrile malaria  
338 in Coastal Kenya showing hotspots within hotspots. *Elife* **2014**; 3: e02130.
- 339 30. Waggoner J, Brichard J, Mutuku F, et al. Malaria and Chikungunya Detected Using  
340 Molecular Diagnostics Among Febrile Kenyan Children. *Open Forum Infect Dis* **2017**; 4(3):  
341 ofx110.
- 342 31. Couturier E, Guillemin F, Mura M, et al. Impaired quality of life after chikungunya virus  
343 infection: a 2-year follow-up study. *Rheumatology (Oxford)* **2012**; 51(7): 1315-22.
- 344 32. Staikowsky F, Le Roux K, Schuffenecker I, et al. Retrospective survey of Chikungunya  
345 disease in Reunion Island hospital staff. *Epidemiol Infect* **2008**; 136(2): 196-206.
- 346 33. Chang AY, Encinales L, Porras A, et al. Frequency of Chronic Joint Pain Following  
347 Chikungunya Virus Infection: A Colombian Cohort Study. *Arthritis Rheumatol* **2018**; 70(4):  
348 578-84.
- 349 34. Hoarau JJ, Jaffar Bandjee MC, Krejbich Trotot P, et al. Persistent chronic inflammation and  
350 infection by Chikungunya arthritogenic alphavirus in spite of a robust host immune response.  
351 *J Immunol* **2010**; 184(10): 5914-27.

- 352 35. Yoon IK, Alera MT, Lago CB, et al. High rate of subclinical chikungunya virus infection and  
353 association of neutralizing antibody with protection in a prospective cohort in the Philippines.  
354 PLoS Negl Trop Dis **2015**; 9(5): e0003764.
- 355 36. Yoon IK, Srikiatkachorn A, Alera MT, Fernandez S, Cummings DAT, Salje H. Pre-existing  
356 chikungunya virus neutralizing antibodies correlate with risk of symptomatic infection and  
357 subclinical seroconversion in a Philippine cohort. Int J Infect Dis **2020**.
- 358 37. Bustos Carrillo F, Collado D, Sanchez N, et al. Epidemiological Evidence for Lineage-  
359 Specific Differences in the Risk of Inapparent Chikungunya Virus Infection. J Virol **2019**;  
360 93(4).

361

362

363

364

365

366

367

368

369

370

371

372

373 **TABLES**

374 **Table 1. Demographic characteristics of study participants**

	<b>CHIKF cases /N (%)</b>	<b>Crude OR (95% CI)</b>	<b>P value</b>
<b>Dispensary</b>			
Ngerenya (Kilifi North)	284/1701 (16.7)	Ref	
Pingilikani (Kilifi South)	159/1799 (8.8)	0.5 (0.39, 0.59)	<0.001
<b>Gender</b>			
Female	221/1647 (13.4)	Ref	
Male	222/1853 (12.0)	0.9 (0.72, 1.07)	0.2
<b>Age (years)</b>			
< 1	79/601 (13.1)	Ref	
1 to <5	220/1700 (12.9)	1.0 (0.75, 1.29)	0.9
5 to <10	109/899 (12.1)	0.9 (0.67, 1.24)	0.6
10 to 15	35/300 (11.7)	0.9 (0.57, 1.33)	0.5
<b>Year</b>			
2014	43/509 (8.4)	Ref	
2015	48/869 (5.5)	0.6 (0.41, 0.97)	0.04
2016	208/902 (23.1)	3.2 (2.29, 4.60)	<0.001
2017	108/674 (16.0)	2.1 (1.42, 3.01)	<0.001
2018	36/546 (6.6)	0.8 (0.48, 1.21)	0.3
<b>Season</b>			
Jan – Mar	142/855 (16.6)	Ref	
Apr – Jun	134/1070 (12.5)	0.7 (0.56, 0.93)	0.01
Jul – Sep	97/939 (10.3)	0.6 (0.44, 0.76)	<0.001
Oct – Dec	70/636 (11.0)	0.6 (0.46, 0.84)	0.002



<b>Clinical diagnosis</b>				
	Other	61/661 (9.2)	Ref	
	Malaria	83/690 (12.0)	1.3 (0.95, 1.91)	0.1
	Pneumonia	27/300 (9.0)	1.0 (0.60, 1.56)	0.9
	URTI	218/1428 (15.3)	1.8 (1.31, 2.39)	<0.001
	Gastroenteritis	14/95 (14.7)	1.7 (0.91, 3.18)	0.1
	Undifferentiated fever	40/326 (12.3)	1.4 (0.90, 2.10)	0.1
<b>Treatment</b>				
	Antibiotic	313/2393 (13.1)	1.1 (0.90,1.40)	0.3
	Antimalarial	117/1104 (10.6)	0.8 (0.60, 0.94)	0.01
	Other	41/291 (14.1)	1.1 (0.81, 1.62)	0.4

375

376

377 **Table 2. Incidence of CHIKF in the study population**

	<b>Ngerenya</b>		<b>Pingilikani</b>	
	<b>N=74,799 person-years</b>		<b>N=65,041 person-years</b>	
	<b>Incidence (95% CI)</b>	<b>IRRs (95% CI)</b>	<b>Incidence (95% CI)</b>	<b>IRRs (95% CI)</b>
<b>Overall incidence</b>	408 (363, 457)	-	267 (228, 311)	-
<b>Year</b>				
2014	-	-	643 (513, 794)	Ref
2015	67 (32, 123)	Ref	289 (205, 397)	0.43 (0.30, 0.64)
2016	1205 (1035, 1395)	18.08 (9.56, 34.18)	187 (120, 279)	0.28 (0.18, 0.44)
2017	611 (493, 750)	9.17 (4.77, 17.61)	62 (27, 122)	0.09 (0.05, 0.19)

2018	104 (56, 178)	1.57 (0.69, 3.57)	93 (44, 170)	0.14 (0.07, 0.27)
<b>Gender</b>				
Female	382 (321, 452)	Ref	328 (268, 398)	Ref
Male	432 (368, 505)	1.13 (0.90, 1.42)	207 (160, 264)	0.63 (0.46, 0.86)
<b>Age (years)</b>				
< 1	2209 (1776, 2715)	Ref	1198 (856, 1631)	Ref
1 to <5	791 (670, 927)	0.36 (0.28, 0.46)	587 (476, 717)	0.49 (0.34, 0.71)
5 to <10	198 (146, 263)	0.09 (0.06, 0.13)	76 (44, 124)	0.06 (0.04, 0.11)
10 to 15	24 (9, 52)	0.01 (0.005, 0.02)	68 (38, 112)	0.06 (0.03, 0.10)
<b>Distance from dispensary (Km)</b>				
<1	800 (531, 1156)	Ref	560 (306, 939)	Ref
1 to <2	930 (742, 1152)	1.16 (0.76, 1.79)	1038 (760, 1384)	1.85 (1.02, 3.37)
2 to <3	657 (531, 804)	0.82 (0.54, 1.25)	837 (658, 1049)	1.50 (0.85, 2.65)
3 to <4	513 (396, 654)	0.64 (0.41, 1.00)	224 (128, 363)	0.40 (0.20, 0.82)
4 to <5	118 (70, 186)	0.15 (0.08, 0.27)	118 (59, 211)	0.21 (0.10, 0.46)
5 to <6	34 (13, 74)	0.04 (0.02, 0.10)	20 (7, 43)	0.04 (0.01, 0.09)
<b>Season</b>				
Jan - Mar	463 (371, 572)	Ref	227 (160, 312)	Ref
Apr - Jun	348 (269, 444)	0.75 (0.54, 1.04)	528 (422, 651)	2.33 (1.58, 3.42)
Jul - Sep	423 (335, 527)	0.91 (0.67, 1.24)	234 (166, 321)	1.03 (0.66, 1.62)
Oct - Dec	394 (304, 503)	0.85 (0.62, 1.17)	50 (20, 103)	0.22 (0.09, 0.49)

378

379

380

381 **FIGURE LEGENDS**

382 **Figure 1: Study population.** The flow of study participants, reasons for exclusion and results from  
383 CHIK RT-PCR screening are shown.

384 **Figure 2: Recurrent CHIKF episodes.** The distribution of febrile episodes for each of 19 children  
385 who had at least two CHIKV RT-PCR positive febrile episodes is shown. The timing of the CHIKV  
386 RT-PCR positive results is shown, with the index episode shown as the first data point in the follow  
387 up timeline. Children with prefix ‘NGE’ were resident in Ngerenya and those with ‘PIN’ from  
388 Pingilikani, respectively. Further details of these children can be found in Supplementary Material  
389 Table S2.

390 **Figure 3: Phylogenetic analysis of CHIKV genomes from Kenya.** BEAST MCC tree of 123 ECSA  
391 genomes collected across the world, including 24 from Kenya is shown in the left panel. On the right  
392 panel is an extraction highlighting the CHIKV sequences generated in this study. The tips are  
393 coloured according to geographic location or child identity (as in Figure 2, for those with paired  
394 index-recurrent episode sequence pairs), with posterior probability support shown for select nodes  
395 with probability >0.8. The same and more detailed MCC tree can be found in the Supplementary  
396 Material Figure S1.

397

398

399

400

401

402

403

404

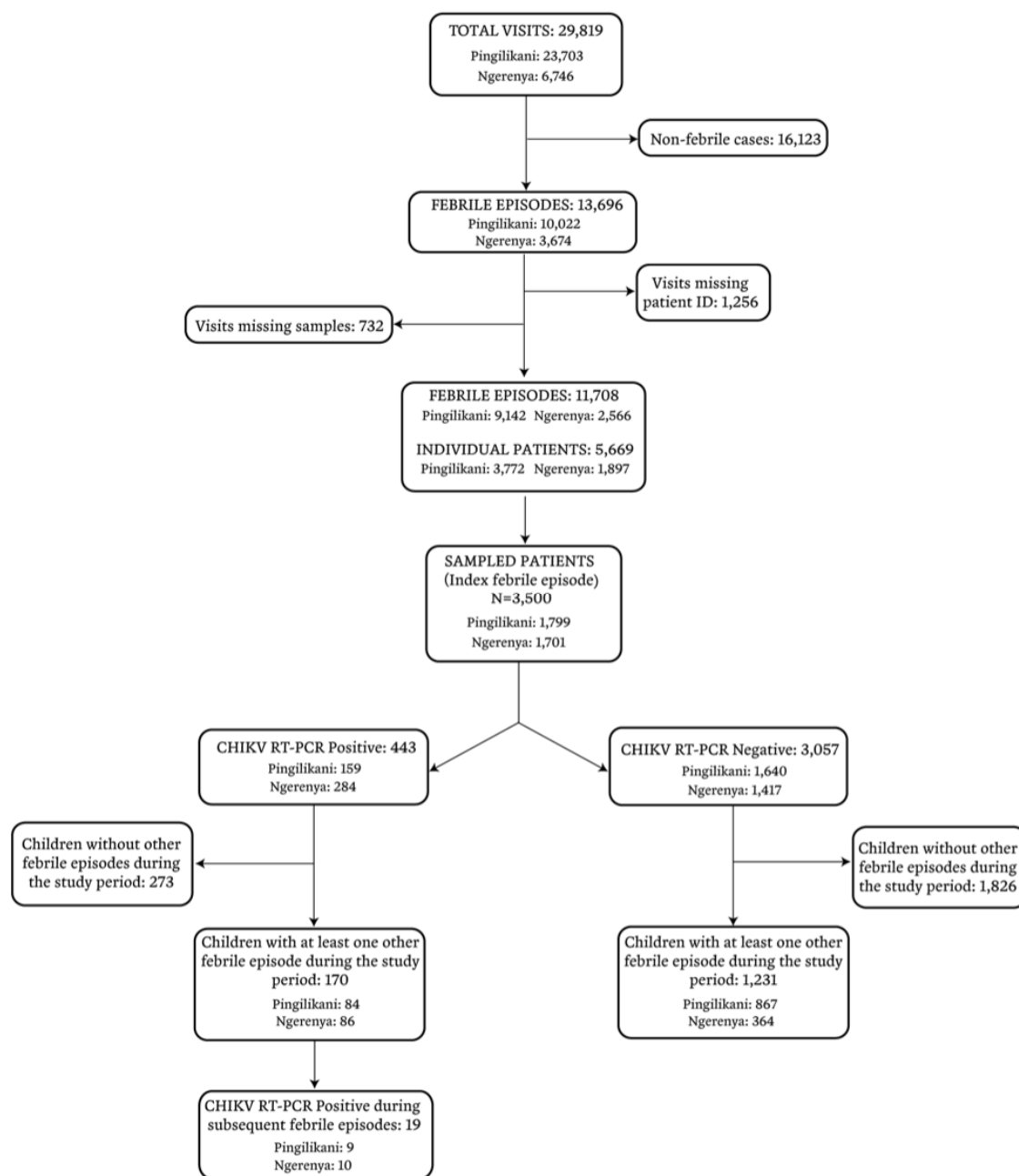
405

406

407

408 **FIGURES**

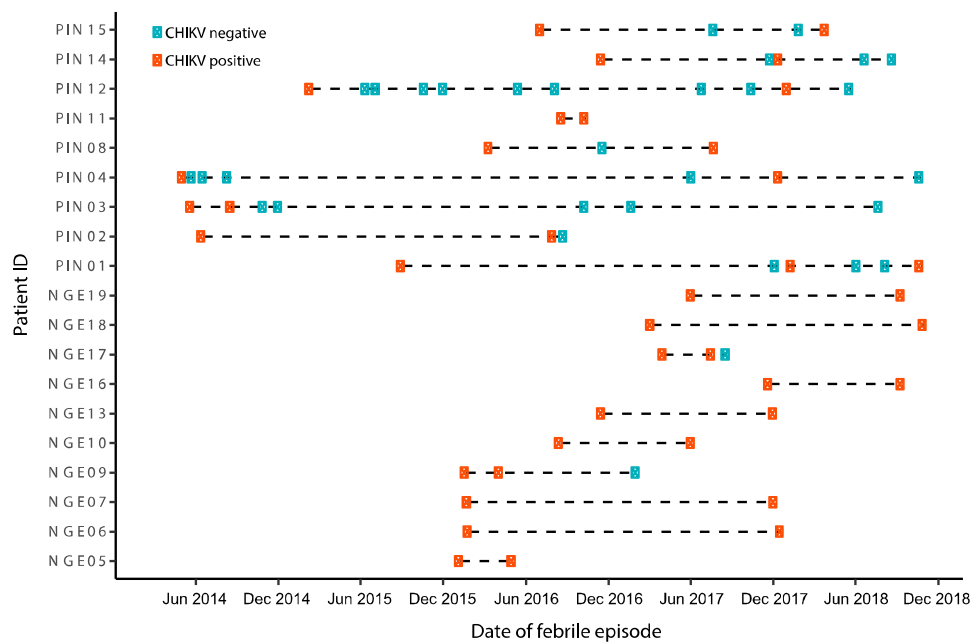
409 **Figure 1**



410

411

412 **Figure 2**



413

414

415

416

417

418

419

420

421

422

423

424

425

426 **Figure 3**

