

## **High stability of severe acute respiratory syndrome coronavirus 2 (SARS-CoV-2) RNA under minimal storage conditions for detection by Real-Time PCR**

Sabrina Summer<sup>1,†</sup>, Ralf Schmidt<sup>2,†</sup>, Anna Nele Herdina<sup>2</sup>, Isabella Krickl<sup>3</sup>, Julia Madner<sup>3</sup>, Georg Greiner<sup>2</sup>, Florian J. Mayer<sup>2</sup>, Nicole Perkmann-Nagele<sup>2</sup>, Robert Strassl<sup>2,\*</sup>

<sup>1</sup>Center for Anatomy & Cell Biology, Medical University of Vienna, Vienna, A-1090, Austria

<sup>2</sup>Department of Laboratory Medicine, Division of Clinical Virology, Medical University of Vienna, Vienna, A-1090, Austria

<sup>3</sup>Department of Gynecological Endocrinology and Reproduction Medicine, Ambulance of In-Vitro Fertilization, Medical University of Vienna, Vienna, A-1090, Austria

\*To whom correspondence should be addressed: [robert.strassl@meduniwien.ac.at](mailto:robert.strassl@meduniwien.ac.at)

†Joint first authors who contributed equally to the work.

## **ABSTRACT**

Reliable diagnosis, executed by Real-Time PCR (RT-PCR), builds the current basis in SARS-CoV-2 containment. Transport and storage conditions are the main indicators determining the quality of respiratory specimens. According to shortages in commercially available viral transport media, the primary aim of this study was to explore the reliability of minimal transport media including saline and CDC Viral Transport Media (HBSS VTM) composition for SARS-CoV-2 diagnosis by Real-time PCR compared to recommended commercially available standard Universal Transport Media (UTM). This study also implicated the stability of other respiratory viruses, including influenza A, respiratory syncytial virus, adenovirus, rhinovirus and human metapneumovirus, providing further evidence for future recommendations on transport and storage of respiratory viruses. Both viral transport media (self-made HBSS VTM and UTM) and saline (0.9% NaCl) allow adequate detection of SARS-CoV-2 and other respiratory viruses, regardless of an increase in storage temperature (up to 28 °C) and time (over 28 days). Treatment of SARS-CoV-2 specimens with varying chlorine concentrations, commonly used in swimming pools, resulted in a significant decrease of viral RNA.

### Importance

Detection of respiratory viruses including SARS-CoV-2 depends on the quality of respiratory specimens, predominantly determined by transport and storage conditions. Our study revealed the high resilience of SARS-CoV-2 and other respiratory viruses enabling proper detection in clinical specimens even after long-time storage at high temperatures. This study provides evidence for future recommendations for transport and storage of respiratory viruses, including SARS-CoV-2.

Treatment of SARS-CoV-2-positive respiratory specimens with chlorine indicates an early degradation of the virus after the addition of the oxidant, proposing sufficient inactivation of the virus in swimming pool water.

## INTRODUCTION

The rapid spread of the novel coronavirus SARS-CoV-2, probably of zoonotic origin<sup>(1)</sup>, has led to a continuing COVID-19 pandemic<sup>(2)</sup>. Extensive laboratory testing for SARS-CoV-2 is currently among the most effective measures to curtail the spread of COVID-19, together with quarantine and social distancing measures<sup>(3, 4)</sup>. Real-time PCR (RT-PCR), typically performed from upper respiratory specimens, represents the current gold standard for SARS-CoV-2 detection. The World Health Organization (WHO) recommends cooled storage (2-8°C) and the transport of respiratory specimens in viral transport medium (VTM) up to 5 days<sup>(3)</sup>. Viral transport medium exists in several formulas, all consisting of a buffered salt solution, a complex source of protein and/or amino acids, and antimicrobial agents and can be bought ready-to-use or prepared at specific sites<sup>(5)</sup>.

The COVID-19 pandemic has severely challenged worldwide supplies of commercial viral transport media as well as commercial swab kits and reagents for SARS-CoV-2 RT-PCR<sup>(5, 6)</sup>. Due to the increased demand and the shortage in supply, alternative minimal transport buffers such as 0.9% saline solution have to be used. As the pandemic also affects countries with limited infrastructural facilities and as there is only limited knowledge on the stability of SARS-CoV-2, the primary aim of the present study was to evaluate the stability and detectability of SARS-CoV-2 RNA in clinical samples stored in HBSS VTM (prepared according to CDC)<sup>(6)</sup> and in 0.9% NaCl at three different temperatures and compare those to commercially available universal transport media (UTM). Additionally, this study aimed to provide evidence on storage and transport conditions of other respiratory viruses, including influenza A, respiratory syncytial virus, adenovirus, rhinovirus and human metapneumovirus, for future recommendations. Finally, the study investigated the effect of defined

chlorine concentrations, commonly used in out and indoor swimming pools<sup>(7, 8)</sup>, on the stability of SARS-CoV-2.

## **MATERIALS AND METHODS**

### **Sample collection**

This study was performed at the Medical University of Vienna, Department of Laboratory Medicine, Division of Clinical Virology during the pandemic of SARS-CoV-2 in 2020. During this period nasopharyngeal swabs were collected from patients showing acute respiratory tract infections. The patient material was directly stored in either saline (0.9% NaCl) or UTM (Universal Transport Medium, Cepheid, Copan Diagnostics) and frozen at -80°C after the initial patient diagnosis.

Stored respiratory specimens from the archive of the Division of Clinical Virology at the Medical University of Vienna, which have been tested positive by routine PCR within the last 2 years for other respiratory viruses (influenza A, respiratory syncytial virus, adenovirus, rhinovirus and human metapneumovirus), were used for the evaluation.

### **Sample preparation**

After one freeze-thaw cycle 12 anonymized SARS-CoV-2-positive samples and 3 anonymized SARS-CoV-2-negative respiratory swab samples were diluted 50-fold in 700 µl self-made viral transport medium (HBSS VTM, HBSS buffer based recipe after CDC recommendations: 500 ml HANKS Balanced Salt Solution HBSS (Gibco), 2% FBS (Gibco), 100 µg/ml Gentamycin (B. Braun Melsungen AG), 0.5 µg/ml Amphotericin B (Cheplapharm))<sup>(6)</sup> and regular saline (0.9% NaCl; B. Braun Melsungen AG), respectively. Following the initial measurement (T0) the samples were stored at different temperatures (4 °C, 21 °C and 28 °C) for up to 28 days. Total

RNA was extracted after 4 (T4), 7 (T7), 14 (T14) and 28 (T28) days. pH values were determined, which served as a surrogate parameter for bacterial contamination.

For comparison of HBSS VTM and saline, respectively, with UTM, 12 anonymized, undiluted SARS-CoV-2-positive samples, 6 in UTM (Universal Transport Medium, Cepheid, Copan Diagnostics) and 6 in saline, were stored at 21 °C after the initial measurement (T0). RNA was extracted after 7 (T7) and 14 (T14) days.

For the treatment of SARS-CoV-2-positive specimens with chlorine, 16 SARS-CoV-2-positive samples were diluted 3-fold in SARS-CoV-2-negative samples. Samples were treated with 0, 1.5 and 3 ppm chlorine<sup>(7, 8)</sup> for 15, 30, and 60 minutes at 21 °C and RNA was extracted for further analysis.

### **RNA isolation and RT-PCR analysis**

Total RNA of SARS-CoV-2 and the other respiratory viruses was extracted from 500 µl of the clinical samples by the AltoStar Automation System AM16 (Altona Diagnostics, Hamburg, Germany) according to the manufacturer's instructions. RT-PCR was carried out using the RealStar SARS-CoV-2 RT-PCR kit (Altona Diagnostics, Hamburg, Germany) targeting the SARS-CoV-2-specific S gene and the betacoronavirus-specific E gene on a Bio-Rad CFX Connect Real-Time PCR Detection System (Bio-Rad Laboratories, Hercules, California, USA). Cq-values (calculated specifically by the Bio-Rad CFX Manager) less than 45 cycles for both tested targets were interpreted as positive for SARS-CoV-2. Positive specimens were further divided into SARS-CoV-2 ++ (Cq <27) and SARS-CoV-2 + (Cq ≥27). Internal controls were used to confirm measurement integrity.

The presence of other respiratory viruses used in this study, Influenza virus A, Adenovirus, respiratory syncytial virus, rhinovirus and human metapneumovirus, were confirmed by TaqMan-based RT-PCR using the LightCycler Multiplex RNA

Virus Master (Roche Diagnostics, Rotkreuz, Switzerland) on a Bio-Rad CFX Connect Real-Time PCR Detection System (Bio-Rad Laboratories, Hercules, California, USA). RT-PCR was performed using the routine test for respiratory viruses at the Medical University of Vienna, Department of Laboratory Medicine, Division of Clinical Virology by the following cycling protocol: 8 minutes at 53 °C, 30 seconds 95 °C, followed by 50 cycles of 1 second at 95 °C, 40 seconds at 60 °C, 1 second at 72 °C and 30 seconds at 40 °C. Primers and probes<sup>(9-13)</sup> are listed in Supplementary Table S1.

### **Data analysis**

The threshold was set manually and Cq-values were exported from CFX Manager Dx Software version 3.1.  $\Delta$ Cq-values were calculated in Microsoft Excel Version 2019 as the differences between the target Cq measured at the dedicated day and temperature and the target Cq of the initial measurement (T0). “Not detectable” signals (N/A) were set to 45 cycles for analysis (total number of cycles of the RT-PCR).

Details on sample sizes are provided in the figure legends. Statistical analysis and calculating the mean Cq-values were done in GraphPad Prism Version 5.0 (GraphPad). Kolmogorov-Smirnov normality test was done in GraphPad Prism Version 5.0 (GraphPad). In most cases, a two-tailed repeated measurement ANOVA was performed with adjustments for multiple comparisons following the Bonferroni post-hoc test. In one case, when data was not normal, a Wilcoxon signed-rank test was done. Significant differences ( $p < 0.05$ ) were marked by a \* above the corresponding curves in the figures.

## **Ethical considerations**

Respiratory swab samples from patients with suspected SARS-CoV-2 infection were first assessed at the Division of Clinical Virology at the Department of Laboratory Medicine at the Medical University of Vienna. A collection of left-over material of positive samples was anonymized and then randomized for purposes of this study before stability analysis. Thus, in correspondence with representatives of the ethical board of the Medical University of Vienna, no separate consultation of the ethics committee was necessary to guarantee ethical standards for conducting biomedical research as required by the Declaration of Helsinki.

## **RESULTS**

### **Evaluation of HBSS VTM and saline as alternatives to UTM as transport media for SARS-CoV-2 specimens at higher temperatures**

To evaluate the stability of the SARS-CoV-2 RNA for diagnostics assessed by RT-PCR paired identical swab specimens of 15 positively-tested SARS-CoV-2 patients were stored in viral transport medium (HBSS VTM, self-made) and saline (0.9% NaCl) over 28 days at different temperatures (4, 21 and 28 °C). Additionally, 12 swab specimens, 6 transported in UTM and 6 in saline, were stored at 21°C for 14 days for comparing self-made HBSS VTM and saline, respectively, to commercial UTM. The original Cq-values detected at day0 (T0) for all samples were below 45 cycles. For each transport medium we analyzed a range of SARS-CoV-2 ++ (Cq <27, n=22, mean Cq 22.16 ± 0.62) to SARS-CoV-2 + (Cq ≥27, n=12, mean Cq 29.86 ± 0.48) specimens. Besides, we also included 3 negative specimens as control.

A comparison of the changes in the Cq-values of specimens transported in VTM and saline over 28 days did not show any significant differences between the two



transport media (Figure 1). Besides, no significant differences between SARS-CoV-2 specimens stored in self-made HBSS VTM and commercially available UTM at 21 °C were observed either (mean  $\Delta Cq$  E T14 for UTM  $-0.3583 \pm 0.3683$ , HBSS VTM  $0.6344 \pm 0.1524$ , NaCl  $0.6753 \pm 0.2770$ ,  $p=0.101$ , mean  $\Delta Cq$  S T14 for UTM  $1.365 \pm 0.6909$ , HBSS VTM  $1.716 \pm 0.2671$ , NaCl  $1.867 \pm 0.3079$ ,  $p=0.637$ ; Figure 2). In specimens stored in VTM an increased tendency for bacterial contamination could be observed by the macroscopic formation of white sediment and drop of the pH. However, this has not impaired the analysis. In general, the virus could be consistently detected in both transport media under different storage conditions over 4 weeks (Figure 1). However, further analysis suggests slight differences in the stability of the target genes to diagnose SARS-CoV-2 (S and E gene). Both genes seem to be on-trend more stable at 4 °C and 28 °C compared to 21 °C (Figure 1, Supplementary Figure S1); notably, no significant changes between the transport media could be observed. At 21 °C (RT) the S gene differs in its stability according to the storage medium; the  $\Delta Cq$ -values of the samples stored in VTM and saline, respectively, vary after 14 and up to 28 days; some specimens show an increased drop in Cq-values at 28 days (Supplementary Figure S1). On the contrary, the variations in the  $\Delta Cq$ -values of the E gene were more prominent between the two transport media at 21°C at the 28-day time point. Specimens stored in saline at RT showed on trend an increase in the  $\Delta Cq$  after 7 days of storage (Figure 1).

Comparison of SARS-CoV-2 + and SARS-CoV-2 ++ samples have not revealed any significant differences in general (Figure 4). In both groups the viral RNA levels were adequately stable for RT-PCR detection, independent of the storage conditions. However, the stability of SARS-CoV-2 + samples kept at 4 °C and 28 °C varied significantly from SARS-CoV-2 ++ (\* 4 °C  $p$  E=0.0008,  $p$  S=<0.0001; 28 °C  $p$

$E=0.0049$ ,  $p S=0.0001$ ), however, no significant changes in the Cq-values could be observed for the specimens stored at 21 °C ( $p E=0.73$ ,  $p S=0.60$ ).

### **Analysis of the stability of other respiratory viruses in VTM and saline at higher temperatures**

Three swabs collected from patients positively tested for influenza A (mean Cq 30.34 ± 0.70), respiratory syncytial virus (mean Cq 23.49 ± 0.53), adenovirus (mean Cq 26.13 ± 1.10), rhinovirus (mean Cq 23.56 ± 0.40) and human metapneumovirus (mean Cq 24.94 ± 0.79), respectively, stored in either VTM or saline were compared for their stable detection by RT-PCR at different temperatures (4, 21 and 28 °C) over 4 weeks (Figure 3). Detection of the various respiratory viruses was stable even at higher temperatures over the observation time; however, influenza A, respiratory syncytial virus and rhinovirus stored at 21 °C showed a destabilization of the detected target gene, mainly when stored in saline (Figure 3 and Supplementary Figure S2). In general, Cq-values of influenza A, respiratory syncytial virus, adenovirus, rhinovirus and human metapneumovirus stored in VTM and saline were consistently detectable and showed no significant decrease in Cq-values over time.

### **Treatment of SARS-CoV-2 specimens with different chlorine concentrations**

Due to the outstanding stability of SARS-CoV-2 RNA, even under challenging conditions, we further explored the detection of viral RNA under chlorine concentrations recommended for out and indoor swimming pools<sup>(7, 8)</sup>. 16 SARS-CoV-2 positive specimens were exposed to 0, 1.5 ppm and 3 ppm chlorine over a time of 60 minutes at RT. Our results showed that even lower concentrations of chlorine led to a decline of viral RNA after a short incubation time of 15 minutes resulting in a drop of Cq-values for both target genes of almost 7 cycles for SARS-CoV-2 +

specimens (Figure 5). Comparable kinetics were observed for samples with high and low viral load (Figure 5). Specimens stored in saline showed a more substantial susceptibility to chlorine. Treatment with 3 ppm chlorine of samples stored in saline leads to an almost complete RNA decay, whereas those stored initially in UTM medium showed a moderate viral RNA reduction.

## **DISCUSSION**

The COVID19 pandemic has re-emphasized the importance of molecular diagnostics for the acquisition of timely results aiding in the containment of the pathogen. In the case of the SARS-CoV-2 virus previous studies have shown that the virus, in contrast to other respiratory viruses like influenza, is not susceptible to heat, supporting the assumption that the prevalence of SARS-CoV-2 will not be seasonal<sup>(14, 15)</sup>. Future demand for testing in the summer season at higher temperatures required a study determining the stability of the virus under these conditions. High outdoor temperatures combined with a long transport time of respiratory specimens could affect the virus detection capabilities of molecular methods such as RT-PCR. This is especially the case in countries with poor infrastructure where rapid, cooled transport and the availability of commercial transport media for respiratory specimens cannot be guaranteed. In the present study we evaluated the stability of SARS-CoV-2, besides other respiratory viruses, for diagnostic analysis by RT-PCR at temperatures up to 28 °C, considering possible effects mediated by the transport medium. Using SARS-CoV-2 positively tested clinical specimens, we demonstrated the remarkable stability of the viral RNA upon long-time storage (up to 28 days) at high temperatures (21 and 28 °C), independent of the transport medium (Figure 1 and Supplementary Figure S1). As previously shown, we were able to confirm this in our study for other respiratory viruses as well<sup>(16)</sup>. Our observations are in line with previous reports about

SARS-CoV-2 stability<sup>(17-20)</sup>. Storage in HBSS VTM and saline were equally suitable for adequate detection of the two target genes E (betacoronavirus-specific) and S (SARS-CoV-2-specific) in specimens characterized by a low and high viral load, respectively (Figure 4). However, at higher temperatures samples stored in HBSS VTM proved to be more susceptible to bacterial contamination, even when supplemented with antibiotics. Nevertheless, bacterial contamination has neither affected sample preparation nor target detection. The findings that saline as transport medium provides stable long-time storage of the clinical samples lacking significant changes in the detection levels of the target genes, not even in case of higher temperatures, could be advantageous to increase future testing capacities. In regards to the minimal alterations in the detected RNA signal, SARS-CoV-2 is highly resilient to high temperatures. Its detection by RT-PCR is sufficiently robust for the diagnosis of COVID-19, even in seasons or countries characterized by higher outdoor temperatures.

Furthermore, the study evaluated the susceptibility of the virus to chlorine. As the shutdown ends for many countries in Europe swimming pools start to open for the summer. Based on a one case report of possible transmission of SARS-CoV-2 in a public bathing house<sup>(21)</sup>, transmission in rehabilitation pools and therapeutic water environments should be considered as well<sup>(22)</sup>. Other coronaviruses have been shown to be highly susceptible to chlorination<sup>(23)</sup>. To our knowledge, this is the first study using clinical samples to test SARS-CoV-2 RNA stability in the presence of chlorine in typical swimming pool concentrations. Expectedly, our data support that SARS-CoV-2 is not stable in water containing 1.5 and 3 ppm chlorine, respectively (Figure 5). We determined the detectability of the E and S gene after the treatment of SARS-CoV-2-positive specimens with different chlorine concentrations. We observed

that short incubation times are sufficient to decrease the detection of the virus. Even though SARS-CoV-2 has been previously shown and confirmed in this study to be highly resistant against changes in environmental conditions<sup>(14, 24)</sup>, treatment with chlorine, leading to a change in pH, has a dramatic effect on the virus. SARS-CoV-2 is an enveloped virus with a fragile outer membrane<sup>(25, 26)</sup> and thus more susceptible to oxidants, such as chlorine, which leads to the breakdown of the viral capsid, hence, viral RNA degradation, as previously also shown for other viruses<sup>(27)</sup>. Our data support that SARS-CoV-2 is inactivated significantly fast by chlorine treatment. Thus, chlorine could not only be used as a disinfectant against SARS-CoV-2 and could also prevent its transmission in swimming pool water.

In summary, we have shown that the survival ability of SARS-CoV-2 in human specimens seems to be considered stable, even compared to other coronaviruses (Figure 1 and Supplementary Figure S1)<sup>(28)</sup>. Increasing temperatures and long-term storage conditions did not affect its stability. We also demonstrated the efficacy of oxidants, such as chlorine, on virus elimination. Besides, our data confirmed that saline and self-made transport media (HBSS VTM) provide useful alternatives to the commercially available UTM that can be deployed for transporting, even in countries with high outdoor temperatures and long-term preservation of SARS-CoV-2 specimens. Thus, an increased capacity of testing for widespread screening of SARS-CoV-2 and early diagnosis of COVID-19 can be achieved.

## **ACKNOWLEDGEMENTS**

We thank Karin Mildner for excellent technical assistance in RT-PCR detection of other respiratory viruses.

## **AUTHOR CONTRIBUTIONS**

Ralph Schmidt (RS), Robert Strassl (R.S.), Georg Greiner (GG), Nicole Perkmann-Nagele (NPN), and Florian J. Mayer (FJM) first planned the study, all authors refined the concept. Sabrina Summer (SS) and Anna Nele Herdina (ANH) conducted the experiments, with technical assistance by Isabella Krickl (IK) and Julia Madner (JM). SS and RS analyzed the data and designed the figures. SS and ANH wrote the manuscript and all authors revised it and approved the final version.

## **CONFLICT OF INTEREST**

The authors have nothing to disclose. No external funding was received for this study.

## **REFERENCES**

1. **Zhou P, Yang XL, Wang XG, Hu B, Zhang L, Zhang W, Si HR, Zhu Y, Li B, Huang CL, Chen HD, Chen J, Luo Y, Guo H, Jiang RD, Liu MQ, Chen Y, Shen XR, Wang X, Zheng XS, Zhao K, Chen QJ, Deng F, Liu LL, Yan B, Zhan FX, Wang YY, Xiao GF, Shi ZL.** 2020. A pneumonia outbreak associated with a new coronavirus of probable bat origin. *Nature* **579**:270-273.
2. **Dong E, Du H, Gardner L.** 2020. An interactive web-based dashboard to track COVID-19 in real time. *The Lancet Infectious Diseases* **20**:533-534.
3. **World Health Organization (WHO).** 2020. Laboratory testing for coronavirus disease 2019 (COVID-19) in suspected human cases: interim guidance, 19 March 2020 <https://www.who.int/publications/i/item/10665-331501>.

4. **World Health Organization (WHO).** 2020. Considerations for quarantine of individuals in the context of containment for coronavirus disease (COVID-19), Interim guidance 19 March 2020. [https://www.who.int/publications/i/item/considerations-for-quarantine-of-individuals-in-the-context-of-containment-for-coronavirus-disease-\(covid-19\)](https://www.who.int/publications/i/item/considerations-for-quarantine-of-individuals-in-the-context-of-containment-for-coronavirus-disease-(covid-19)).
5. **Smith KP, Cheng A, Chopelas A, DuBois-Coyne S, Mezghani I, Rodriguez S, Talay M, Kirby JE.** 2020. Large-scale, in-house production of viral transport media to support SARS-CoV-2 PCR testing in a multi-hospital healthcare network during the COVID-19 pandemic. *J Clin Microbiol* doi:10.1128/JCM.00913-20.
6. **Centers for Disease Control and Prevention (CDC).** 2020. Preparation of viral transport medium. CDC, [https://www.cdc.gov/csels/dls/locs/2020/new\\_sop\\_for\\_creating\\_vtm.html](https://www.cdc.gov/csels/dls/locs/2020/new_sop_for_creating_vtm.html).  
[https://www.cdc.gov/csels/dls/locs/2020/new\\_sop\\_for\\_creating\\_vtm.html](https://www.cdc.gov/csels/dls/locs/2020/new_sop_for_creating_vtm.html).
7. **World Health Organization (WHO).** 2017. Guidelines for Drinking-Water Quality: Fourth Edition Incorporating the First Addendum, WHO Guidelines Approved by the Guidelines Review Committee, Geneva.
8. **Wyczarska-Kokot J, Lempart-Rapacewicz A, Dudziak M.** 2020. Analysis of Free and Combined Chlorine Concentrations in Swimming Pool Water and an Attempt to Determine a Reliable Water Sampling Point Water **12:311**.
9. **Ward C, Dempsey M, Ring C, Kempson R, Zhang L, Gor D, Snowden B, Tisdale M.** 2004. Design and performance testing of quantitative real time PCR assays for influenza A and B viral load measurement. *Journal of clinical virology* **29:179-188**.
10. **Heim A, Ebnet C, Harste G, Pring-Akerblom P.** 2003. Rapid and quantitative detection of human adenovirus DNA by real-time PCR. *J Med Virol* **70:228-239**.

11. **Fry AM, Chittaganpitch M, Baggett HC, Peret TCT, Dare RK, Sawatwong P, Thamthitiwat S, Areerat P, Sanasuttipun W, Fischer J, Maloney SA, Erdman DD, Olsen SJ.** 2010. The Burden of Hospitalized Lower Respiratory Tract Infection due to Respiratory Syncytial Virus in Rural Thailand. *Plos One* **5**.
12. **Lu X, Holloway B, Dare RK, Kuypers J, Yagi S, Williams JV, Hall CB, Erdman DD.** 2008. Real-time reverse transcription-PCR assay for comprehensive detection of human rhinoviruses. *J Clin Microbiol* **46**:533-539.
13. **Maertzdorf J, Wang CK, Brown JB, Quinto JD, Chu M, de Graaf M, van den Hoogen BG, Spaete R, Osterhaus ADME, Fouchier RAM.** 2004. Real-time reverse transcriptase PCR assay for detection of human metapneumoviruses from all known genetic lineages. *Journal of Clinical Microbiology* **42**:981-986.
14. **Chin A, Chu J, Perera M, Hui K, Yen H, Chan M, Peiris M, Poon L.** 2020. Stability of SARS-CoV-2 in different environmental conditions. *The Lancet Microbe* **1**.
15. **Duan SM, Zhao XS, Wen RF, Huang JJ, Pi GH, Zhang SX, Han J, Bi SL, Ruan L, Dong XP, Team SR.** 2003. Stability of SARS coronavirus in human specimens and environment and its sensitivity to heating and UV irradiation. *Biomed Environ Sci* **16**:246-255.
16. **Dare R, Zhu Y, Williams JV, Griffin M, Talbot HK.** 2016. Detection of influenza by real time RT-PCR is not affected by delays in respiratory specimen processing. *J Med Virol* **88**:1891-1895.
17. **Perchetti GA, Huang ML, Peddu V, Jerome KR, Greninger AL.** 2020. Stability of SARS-CoV-2 in PBS for Molecular Detection. *J Clin Microbiol* doi:10.1128/JCM.01094-20.
18. **Radbel J, Jagpal S, Roy J, Brooks A, Tischfield J, Sheldon M, Bixby C, Witt D, Gennaro ML, Horton DB, Barrett ES, Carson JL, Panettieri RA, Jr., Blaser MJ.** 2020. Detection of Severe Acute Respiratory Syndrome Coronavirus 2



(SARS-CoV-2) Is Comparable in Clinical Samples Preserved in Saline or Viral Transport Medium. *J Mol Diagn* doi:10.1016/j.jmoldx.2020.04.209.

19. **Rodino KG, Espy MJ, Buckwalter SP, Walchak RC, Germer JJ, Fernholz E, Boerger A, Schuetz AN, Yao JD, Binnicker MJ.** 2020. Evaluation of Saline, Phosphate-Buffered Saline, and Minimum Essential Medium as Potential Alternatives to Viral Transport Media for SARS-CoV-2 Testing. *J Clin Microbiol* **58**.

20. **Rogers AA, Baumann RE, Borillo GA, Kagan RM, Batterman HJ, Galdzicka M, Marlowe EM.** 2020. Evaluation of Transport Media and Specimen Transport Conditions for the Detection of SARS-CoV-2 Using Real Time Reverse Transcription PCR. *J Clin Microbiol* doi:10.1128/JCM.00708-

21. **Luo C, Yao L, Zhang L, Yao M, Chen X, Wang Q, Shen H.** 2020. Possible Transmission of Severe Acute Respiratory Syndrome Coronavirus 2 (SARS-CoV-2) in a Public Bath Center in Huai'an, Jiangsu Province, China. *JAMA Netw Open* **3**:e204583.

22. **Romano-Bertrand S, Aho Glele LS, Grandbastien B, Lepelletier D, on behalf of the French Society for Hospital Hygiene.** 2020. Preventing SARS-CoV-2 transmission in rehabilitation pools and therapeutic water environments. *Journal of Hospital Infection* doi:<https://doi.org/10.1016/j.jhin.2020.06.003>.

23. **Water Research Australia.** 2020. SARS-COV-2 - water and sanitation. [http://www.waterra.com.au/r9544/media/system/attrib/file/2199/WaterRA FS Coronavirus V10.pdf](http://www.waterra.com.au/r9544/media/system/attrib/file/2199/WaterRA_FS_Coronavirus_V10.pdf). Accessed March 2020.

24. **Schwartz KL, Kim J, Garber G.** 2020. Stability and Viability of SARS-CoV-2. *N Engl J Med* **382**.

25. **Wu Q, Zhang Y, Lu H, Wang J, He X, Liu Y, Ye C, Lin W, Hu J, Ji J, Xu J, Ye J, Hu Y, Chen W, Li S, Wang J, Wang J, Bi S, Yang H.** 2003. The E protein is a

multifunctional membrane protein of SARS-CoV. Genomics Proteomics  
Bioinformatics **1**:131-144.

26. **Walls AC, Park YJ, Tortorici MA, Wall A, McGuire AT, Velesler D.** 2020. Structure, Function, and Antigenicity of the SARS-CoV-2 Spike Glycoprotein. Cell **181**:281-292 e286.
27. **Engelbrecht RS, Weber MJ, Salter BL, Schmidt CA.** 1980. Comparative inactivation of viruses by chlorine. Appl Environ Microbiol **40**:249-256.
28. **Rabenau HF, Cinatl J, Morgenstern B, Bauer G, Preiser W, Doerr HW.** 2005. Stability and inactivation of SARS coronavirus. Med Microbiol Immunol **194**:1-6.

## FIGURE LEGENDS

### **Figure 1: VTM and saline are both suitable transport media for SARS-CoV-2 specimens at high storage temperatures**

RT-PCR measurements of clinical specimens positive for SARS-CoV-2 stored in NaCl and VTM medium over 4 weeks at 3 different temperatures (4 °C, 21 °C and 28 °C).  $\Delta Cq$ -values  $\pm$  SEM for SARS-CoV-2 at 4 °C and 28 °C  $n = 12$ , SARS-CoV-2 at 21 °C  $n = 22$  are shown. \*  $p$ -values $<0.05$ , repeated measurement ANOVA.

### **Figure 2: HBSS VTM and saline are both suitable alternatives to UTM as transport media for SARS-CoV-2 specimens at 21 °C**

RT-PCR measurements of clinical specimens positive for SARS-CoV-2 stored in NaCl, HBSS VTM and UTM medium over 14 days at 21 °C.  $\Delta Cq$ -values  $\pm$  SEM for NaCl and HBSS VTM  $n = 16$  and UTM  $n = 6$  are shown. \*  $p$ -values $<0.05$ , repeated measurement ANOVA.

**Figure 3: VTM and saline are both suitable transport media for respiratory virus specimens at high storage temperatures**

RT-PCR measurements of clinical specimens positive for influenza A, respiratory syncytial virus, rhinovirus, human metapneumovirus and adenovirus stored in NaCl and VTM medium over 4 weeks at 3 different temperatures (4 °C, 21 °C and 28 °C).  $n = 3$  are shown. \*  $p$ -values < 0.05, repeated measurement ANOVA.

**Figure 4: Long-term storage, even at high temperatures, allows adequate detection of weakly positive SARS-CoV-2 specimens**

RT-PCR measurements of clinical specimens strongly and weakly positive for SARS-CoV-2 stored in NaCl and VTM medium, respectively, over 4 weeks at 3 different temperatures (4 °C, 21 °C and 28 °C). Cq-values  $\pm$  SEM for SARS-CoV-2 + at 4 °C  $n = 3-4$ ; at 21 °C  $n = 10-12$  and 28 °C  $n = 2-4$  and for SARS-CoV-2 ++ at 4 °C  $n = 20$ ; at 21 °C  $n = 17-22$  and 28 °C  $n = 20-22$  are shown. \*  $p$ -values < 0.05, repeated measurement ANOVA and Wilcoxon signed rank test.

**Figure 5: Stability of SARS-CoV-2 specimens incubated with different chlorine concentrations**

RT-PCR measurements of clinical specimens positive for SARS-CoV-2 treated with different concentrations of chlorine (0, 1.5 and 3 ppm) from 15 to 60 minutes at 21 °C. Cq-values  $\pm$  SEM for SARS-CoV-2 + at 15 minutes  $n = 5-6$ ; at 30 minutes  $n = 4-6$  and at 60 minutes  $n = 6$  and for SARS-CoV-2 ++ at 15 minutes  $n = 2-3$ ; at 30 minutes  $n = 9-10$  and at 60 minutes  $n = 3-4$  are shown. \*  $p$ -values < 0.05, repeated measurement ANOVA.

Figure 1

medRxiv preprint doi: <https://doi.org/10.1101/2020.07.21.20158154>; this version posted July 25, 2020. The copyright holder for this preprint (which was not certified by peer review) is the author/funder, who has granted medRxiv a license to display the preprint in perpetuity. All rights reserved. No reuse allowed without permission.

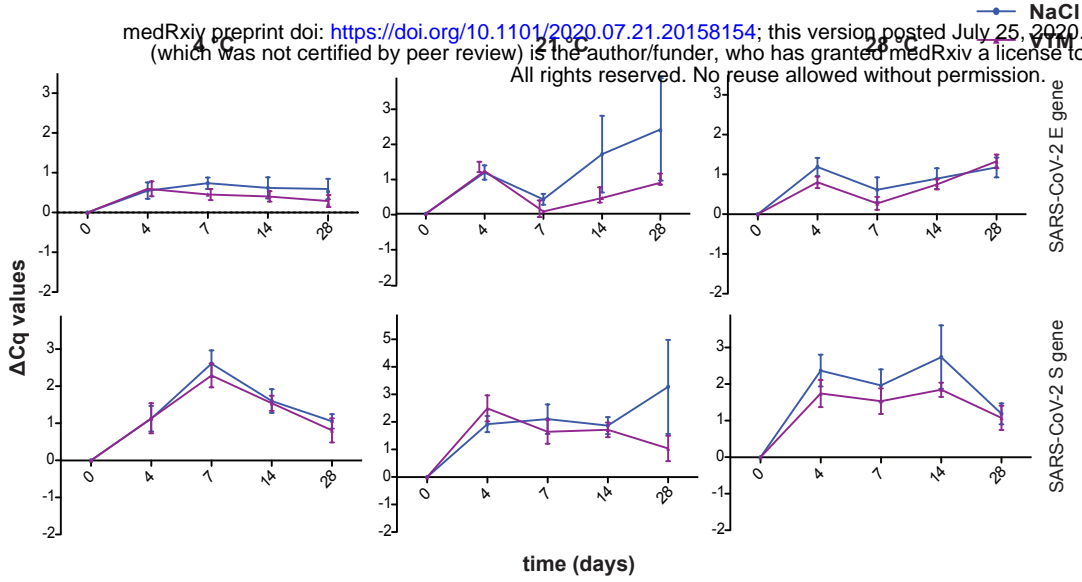


Figure 2

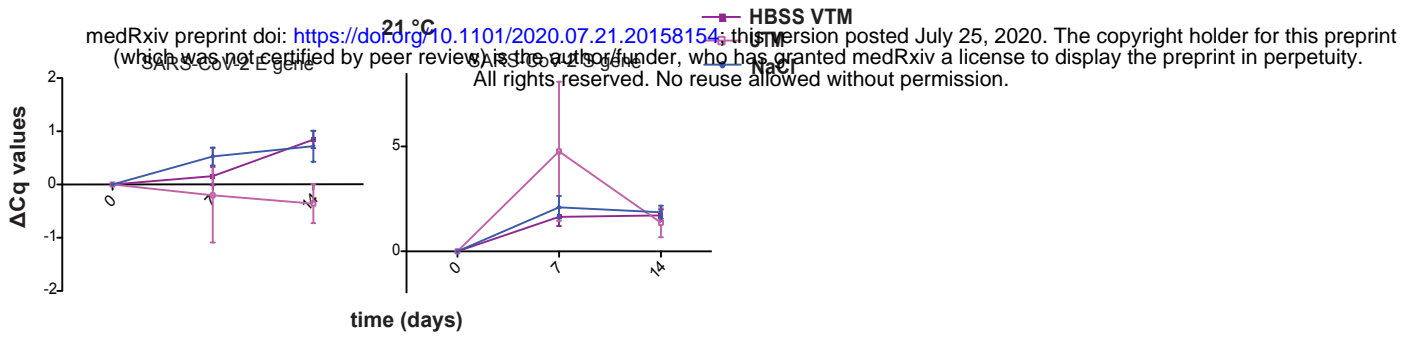


Figure 3

medRxiv preprint doi: <https://doi.org/10.1101/2020.07.21.20158154>; this version posted July 25, 2020. The copyright holder for this preprint (which was not certified by peer review) is the author/funder, who has granted medRxiv a license to display the preprint in perpetuity. All rights reserved. No reuse allowed without permission.

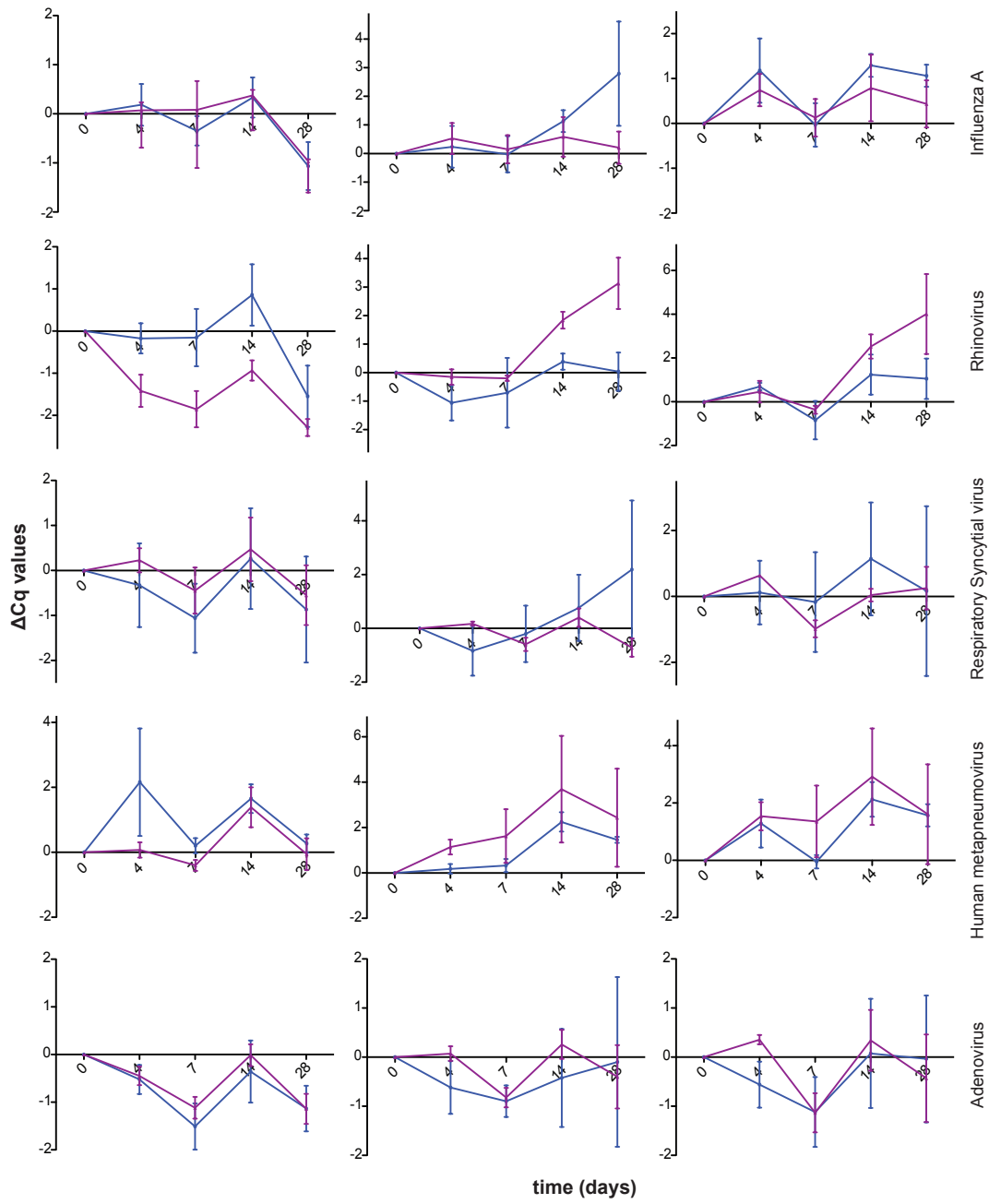


Figure 4

medRxiv preprint doi: <https://doi.org/10.1101/2020.07.21.20158154>; this version posted July 25, 2020. The copyright holder for this preprint (which was not certified by peer review) is the author/funder, who has granted medRxiv a license to display the preprint in perpetuity. All rights reserved. No reuse allowed without permission.

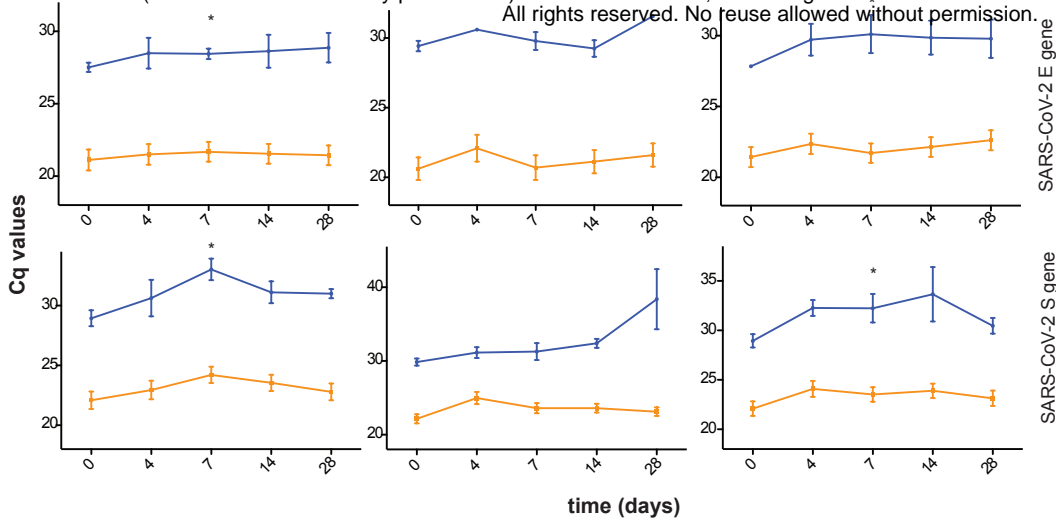


Figure 5

medRxiv preprint doi: <https://doi.org/10.1101/2020.07.21.20158154>; this version posted July 25, 2020. The copyright holder for this preprint (which was not certified by peer review) is the author/funder, who has granted medRxiv a license to display the preprint in perpetuity. All rights reserved. No reuse allowed without permission.

