

1 Humoral Response Dynamics Following Infection with SARS-CoV-2

2 Louis Grandjean MBBS^{1,2*}, Anja Saso MBBS^{2,3,4*}, Arturo Torres MSc^{1,5**}, Tanya Lam MBBS^{2**},
3 James Hatcher MBBS⁶, Rosie Thistlethwayte BA⁷, Mark Harris⁸, Timothy Best⁵, Marina
4 Johnson PhD¹, Helen Wagstaffe PhD¹, Elizabeth Ralph MSc⁹, Annabelle Mai MSc⁹, Caroline
5 Colijn PhD¹⁰, Judith Breuer MBBS¹, Matthew Buckland MBBS⁹, Kimberly Gilmour MBBS⁹,
6 David Goldblatt MB ChB¹ and the Co-Stars Study Team^{2†}

7
8 *Contributed equally (LG is also corresponding author)

9 **Contributed equally

10

11 Author Affiliations:

12

13 ¹Department of Infection, Inflammation and Immunity, Great Ormond Street Institute of
14 Child Health, University College London, 30 Guilford Street, London, UK WC1N 1EH

15 ²Department of Infectious Diseases, Great Ormond Street Hospital, Great Ormond Street,
16 London, WC1N 3JH

17 ³Department of Tropical and Infectious diseases; LSHTM, Keppel St, Bloomsbury, London
18 WC1E 7HT

19 ⁴MRC Gambia at LSHTM, PO Box 273, Fajara, The Gambia

20 ⁵Department of Medicine, Imperial College, Paddington, London, W2 1NY

21 ⁶Department of Microbiology, Great Ormond Street Hospital, Great Ormond Street, London,
22 WC1N 3JH

23 ⁷Management, Great Ormond Street Hospital, Great Ormond Street, London, WC1N 3JH

24 ⁸Quality Improvement, Great Ormond Street Hospital, Great Ormond Street, London, WC1N
25 3JH

26 ⁹Clinical Immunology, Camelia Botnar Laboratories, Great Ormond Street Hospital, Great
27 Ormond Street, London, WC1N 3JH

28 ¹⁰Department of Mathematics, Simon Fraser University, Vancouver, British Columbia,
29 Canada BC V5A

30

31 'The Co-Stars Study Team:

| | | | |
|--------------------------------------|-------------------|------------------------|----------------------------|
| Dorcas Mirambe-Korsah | Fernanda Torrente | Jakub Wyszynski | Victoria Gander |
| Amy Leonard | Louise Myers | Aimee Vallot | Camille Paillass |
| Rose Fitzgerald | Adam Twigg | Rabia Manaf | Lois Gibbons |
| Hollie Powell | Richard Nar-Dorh | Ally Gray | Elias Fernandez |
| Aline Minja | Emily Beech | Waffa Girshab | Pei Shi Chia |
| Kate Webb | Malti Nakrani | Kim Gardiner | Valerija Karaluka |
| Karen Ryan | Dorothy Lee | Katie Groves | Hamad Khan |
| Shamime Nsubuga | Olivia Wilkinson | Rosie- Julia Spires | Nuria Sanchez- Clemente |
| Sapriya Kaur | Natasha Carroll | Jemma Efford | Gabriel Bredin |
| Celma Marisa Dos Santos Domingues | Sophie Foxall | Helen Ashton | Abbey Afzal |
| Sally Mainland | Kate Crumpler | Lucinda Dawson | Claire Smith |
| Maria Tabbu | Laura Chiverton | Jade Sugars | Jordan Mooney |
| Dorothy Chikusu | Fariba Tahami | Baratth Samy | Shomona Begum |

| | | | |
|----------------|--------------------|--------------|-----------------|
| Dhimple Patel | Philippa Wiltshire | Annie Susay | Anna Ryan |
| Luke Lancaster | Kavita Thind | Kate Speller | Rachel Sterling |
| Connor Tugulu | Sandhya Ghurburrun | Steffi Gray | Joy Mugas |
| Moe Kishma | Kathleen Akpokomua | Sophie White | Eleana Pieri |
| Sabina Shamsad | Demi Alexandrou | Odera Aguele | |
| Anamika Jain | Subishma Gautam | Oliver Simms | |

32

33 **Corresponding author contact details:**

34 Dr Louis Grandjean

35 Department of Infection, Inflammation and Immunity, Institute of Child Health, 30 Guilford

36 Street, London, WC1N

37 l.grandjean@ucl.ac.uk

38

39 **Trial registration number:** NCT04380896.

40

41 **Key words:** immunity, serology, antibody, ELISA, kinetics, neutralisation, SARS-CoV-2,

42 COVID-19, virus, nucleoprotein, spike protein

43

44

45

46

47 **Abstract**

48 **Objectives** To understand humoral dynamics following SARS-CoV-2 infection

49 **Design** Prospective Cohort Study

50 **Setting** Great Ormond Street Hospital (Central London Paediatric Hospital)

51 **Participants** 67 healthcare workers aged >18 years who provided monthly serial serological
52 samples from 29th April 2020 until 30th June 2020.

53 **Main outcome measures** The change in monthly serial antibody titers to SARS-CoV-2
54 nucleoprotein (N), spike protein and the receptor binding domain of the spike protein.

55 **Results** The mean estimated half-life of the nucleoprotein antibody was 52 days (95% CI 42-
56 65). The spike and RBD antibody had significantly longer mean half-lives of 81 days (95% CI
57 61-111) and 83 days (95% CI 55-137) respectively. An ACE-2 receptor competition assay
58 demonstrated significant correlation between the spike and RBD antibody titers and ACE2
59 receptor blocking in-vitro. The time to a negative nucleoprotein antibody test for 50% of
60 the seropositive population was predicted to be 195 days (95% CI 163-236).

61 **Conclusions** After SARS-CoV-2 infection, the predicted half-life of nucleoprotein antibody
62 was 52 days with 50% of seropositives becoming seronegative to this antibody at 195 days.
63 Widely used serological tests that depend on the nucleoprotein antibody will therefore
64 underestimate the true prevalence of infection within a year following the majority of
65 infections.

66

67

68

69

70

71 **Introduction**

72 Since appearing as a cluster of pneumonia cases in December 2019 in Wuhan, China,
73 Coronavirus disease (COVID-19) has rapidly spread worldwide.[1] As of July 7th, there have
74 been 11,863,477 cases, resulting in 544,949 deaths and a global health crisis, with
75 significant social, economic and public health implications.[2] COVID-19 is caused by severe
76 acute respiratory syndrome coronavirus-2 (SARS-CoV-2), an enveloped RNA β -
77 coronavirus.[3] Specific immunoglobulin (IgG) antibody responses to the SARS-CoV-2
78 trimeric spike (S) protein, nucleoprotein (N) protein and the receptor-binding domain
79 (RBD) develop between 6-15 days following disease-onset.[4] The S-protein, which contains
80 the RBD, binds to host cells via the angiotensin-converting-enzyme-2 (ACE-2) receptor, and
81 membrane fusion occurs before viral entry.[5,6] The N-protein plays an important role in
82 transcription enhancement and viral assembly.[7]

83

84 The dynamics and duration of the antibody response to S-protein, N-protein and the RBD
85 following infection or exposure with SARS-CoV-2 remain poorly understood.[8–10]
86 Quantifying the humoral response shortly after infection limits the inferences that can be
87 made about longer term dynamics. SARS-CoV-2-specific antibodies (particularly to the S-
88 protein) detected in convalescent individuals have been shown to strongly correlate with
89 virus-specific T-cell responses and viral neutralisation *in vitro*, as well as protection against
90 disease in animal models, following passive transfer of selected monoclonal
91 antibodies.[8,11–15] It is unknown whether re-infection in humans occurs following primary
92 infection with SARS-CoV-2. However, re-infection did not occur in rhesus macaques that
93 were re-challenged in the presence of detectable endogenous antibodies.[16,17] Taken

94 together, these findings highlight the importance of characterising humoral dynamics
95 following SARS-CoV-2 infection.

96 A large seroprevalence survey undertaken in Spain, recently reported a SARS-CoV-2
97 seroprevalence of 5.0%[18]. This study used a chemiluminescent assay to detect
98 nucleoprotein antibody together with a point of care lateral flow device. In contrast, Public
99 Health England undertook a SARS-CoV-2 spike antibody seroprevalence survey of 1000
100 samples from blood donors in London estimating a seroprevalence of 17.5% in the first
101 week of April[19]. Whilst many socio-demographic factors could account for the different
102 estimates of seroprevalence between these studies, one explanation may be the relative
103 decay of the spike and the nucleoprotein antibodies.

104

105 Longitudinal serological data from Taiwan's national SARS database estimated the half-life
106 of SARS-CoV-1 neutralizing antibody to be 45 days,[20] whilst 74% of hospitalized patients in
107 China had detectable SARS-CoV-1 IgG at 36 months post-infection.[21] After pauci-
108 symptomatic MERS infection, antibodies rapidly decayed and were undetectable within one
109 year.[22] However, following severe disease, antibodies have been detected up to 34
110 months post-infection.²³

111

112 In order to evaluate SARS-CoV-2 antibody kinetics and longevity, we launched the Covid-19
113 Staff Testing of Antibody Responses Study (Co-STARS), a longitudinal prospective cohort
114 study of healthcare workers designed to measure serial quantitative antibody levels over 1-
115 year. In parallel with serological data, detailed demographic, clinical and socioeconomic
116 data was also collected across different hospital departments, to provide a comprehensive
117 insight into factors that may influence antibody dynamics.

118

119

120

121 **Methods**

122

123 Study setting and design: Co-STARS is a 6-year single-centre, two-arm, prospective
124 longitudinal cohort study of healthcare workers at a central London paediatric hospital
125 (Great Ormond Street Hospital for Children). The study was approved to start by the United
126 Kingdom NHS Health Research Authority on 29th April 2020 and registered on
127 ClinicalTrials.gov (NCT04380896). Informed consent was obtained from all participants. The
128 Study Protocol and Supplementary Materials submitted with this paper include detailed
129 methods, power calculations and the data analysis approach.

130

131 Study participants: All hospital staff members ≥ 18 years of age were eligible for the study,
132 provided they did not display symptoms consistent with SARS-CoV-2 infection at
133 recruitment. If they had been symptomatic or had suspected contact with COVID-19
134 previously, at least 21 days were required to have passed prior to their baseline visit. Those
135 significantly immunosuppressed[23] or those who had previously received blood products
136 (including immunoglobulins or convalescent sera) since September 2019 were excluded
137 from the study.

138

139 Data Collection: After providing informed consent, participants undertook a detailed,
140 standardised online questionnaire at study entry. This included socio-demographic factors,
141 details of previous exposure to and symptomatic episodes consistent with COVID-19, any
142 subsequent complications, previous SARS-CoV-2 diagnostic test results, past medical and
143 contact history, and a comprehensive assessment of risk factors for exposure, susceptibility

144 to infection and severe disease. Blood samples were also taken at baseline and each follow-
145 up visit for determination of SARS-CoV-2 serology.

146

147 Measurement of SARS-CoV-2 serum antibody and viral RNA by PCR: All serological samples
148 were analysed by the Meso Scale Discovery (MSD) Chemiluminescent binding assay that
149 detects and quantifies anti-SARS-CoV-2 IgG specific for trimeric S-protein, RBD and N-
150 protein. All samples were run in parallel on the commercial ELISA EDI kit (Epitope
151 Diagnostics Inc., California) that detects the anti-SARS-CoV-2 IgG to N-protein. The EDI kit
152 did not quantify titers but did provide a positive, negative or equivocal test output with a
153 ratio relative to the positive control.

154

155 An MSD® 96-well Custom Competition Assay designed to measure the inhibition of ACE-2
156 receptor binding to S or RBD by serum-derived antibody (MSD, Maryland) was run on 94
157 serial samples samples from 46 participants (two participants had 3 serial samples) in order
158 to establish *in vitro* correlates of functional immunity. IgG levels for the MSD assay were
159 expressed as arbitrary units calibrated against a set of reference sera distributed by the
160 National Institute of Biological Standards and Control (Potters Bar, UK) under the auspices of
161 the World Health Organisation. Assay qualification and performance were evaluated in our
162 laboratories (see Supplementary Materials).

163

164 SARS-CoV-2 real-time reverse-transcriptase polymerase chain reaction (RT-PCR) targeting
165 the N-gene was performed following RNA extraction, as previously described by colleagues
166 at our laboratory.[24]

167

168 Follow-Up Visits: All seropositive participants are being followed up monthly (ongoing) for
169 repeat antibody testing for the first 6 months then 6-monthly thereafter. Seronegative
170 participants will be followed up 6-monthly. At each follow-up visit, participants completed a
171 shortened version of the baseline questionnaire, focussing on any recurrent COVID-19
172 exposure and/or symptoms.

173

174 Study outcomes: The primary outcome of the study was to establish humoral dynamics
175 following SARS-CoV-2 infection. Secondary outcomes measures included the incidence of
176 SARS-CoV-2 re-infection, the dynamics of the cellular response, IgA dynamics and the clinical
177 and demographic factors that are associated with the rate of antibody decay.

178

179 Statistical analysis: Power calculations were based on log-linear regression using the
180 `pwr.f2.test` function in R for general linear models. We assumed a study power of 80% and
181 provided a study power for a variety of effect sizes and co-variates. We provided estimates
182 for the study size required to detect effect sizes of ~20% changes in log linear titers over 1
183 year with (with an alpha of 0.05) **(Supplementary Figure 1).**

184

185 We used a Bayesian framework to model antibody decay from 21 days post infection as a
186 negative exponential (log-linear) function of time using a random intercepts mixed effects
187 model, with random effects at the individual level to adjust for the titer variation between
188 patients. The 21-day starting point for antibody decay was chosen *a-priori* based on existing
189 data of antibody responses to SARS-CoV-2.[25] Plotting the rate of decay against time
190 supported our hypothesis that the rate of the negative exponential decay would remain
191 constant over time **(Supplementary Figure 2).**

192

193 Antibody titers were log-transformed and a linear model was fitted to the paired points
194 using RSTAN in R (R: A language and environment for statistical computing. Foundation for
195 Statistical Computing, Vienna, Austria. URL <http://www.R-project.org/>).

196

197 Variability in antibody titers was modelled by introducing a random effects parameter at the
198 level of the individual. Biologically important covariates that were hypothesized a-priori to
199 influence antibody titers, including age, sex, BMI, comorbidities and ethnicity, were
200 considered and the Deviance Information Criterion (DIC) was used to define the model of
201 best fit to the data. The prior for the slope was drawn from a normal distribution (mean=0,
202 variance=1), the intercept was a uniform distribution (min=0, max=10) while the random
203 effects were taken from a normal distribution (mean=0, sigma_u) where sigma_u was
204 estimated from the model.

205

206 The posterior probabilities of the slope were applied to infer the half-life distributions, using
207 the following relationship between the half-life and the slope: $t_{1/2} = \ln(2)/r$ where r is the
208 slope sampled from the posterior distribution and $t_{1/2}$ is the half-life.

209

210 The time to test negativity for 50% of the population, $t_{\text{neg}50}$, was defined as the time for the
211 initial antibody titers (measured from 21 days after symptom-onset) to decline to the
212 negative threshold value for the assay. The confidence limits around the curves were
213 derived by repeated sampling from the posterior distribution of the starting titers (including
214 their random effect offset) combined with repeated sampling from the posterior slopes.

215

216

217 Patient and Public Involvement: Participants were first invited to be involved in the research
218 by hospital wide e-mail via the GOSH communications department. Before the study was
219 undertaken, a survey was conducted by the trust that demonstrated the importance of this
220 research to the hospital staff. A subset of 30 participants was asked for their feedback
221 throughout the study preparation, design, implementation and analysis. This same group
222 were involved in determining the design and dissemination of results to all study
223 participants. Dissemination of the results will take place to all participants at the trust wide
224 level.

225

226 **Results**

227 Socio-Demographic and Clinical Details: A total of 137 longitudinal samples that were in
228 pairs or triplicate from 67 of the first participants in the Co-Stars study were available for
229 analysis. Fifty-three participants (79%) of the cohort were women and 25% were from Black,
230 Asian, Minority Ethnic (BAME) backgrounds (17/67). Importantly, none of the participants
231 had been admitted to hospital and only 5% had underlying comorbidities. Age, clinical, and
232 demographic variables for the cohort are reported in Supplementary Table 1.

233

234 Model Fit: The combination of co-variates that provided the best model fit was determined
235 by optimizing the Deviance Information Criterion (**Supplementary Table 2**). Log-linear
236 models were fitted to the decay of each SARS-CoV-2 antibody with confidence limits on the
237 slope included with and without individual random effects (**Figure 1**). Monte Carlo Markov
238 Chain (MCMC) plots converged appropriately for the 3 antibodies and estimated parameters
239 (**Supplementary Figure 3**).

240

241

242

243 Half-life Estimations: The mean posterior probability of the slope of the N-antibody was
244 twice the magnitude of the mean slopes of the S and RBD antibodies (**Supplementary Figure**
245 **4**). This translated to a half-life of 52 days (95% CI 42-65) for the nucleoprotein antibody and
246 a half-life of 81 (95% CI 61-111) and 83 days (95% CI 55-137) for the S- and RBD-antibody,
247 respectively (**Figure 2**).

248 Time-to-Negativity: When these estimated rates were extrapolated to time-to-negativity
249 (**Figure 3**) and time-to-undetectable curves (**Supplementary Figure 5**), 50% of the
250 seropositive population by the MSD assay were estimated to be negative to the N-antibody
251 at 195 days (95% CI 163-236); by comparison, 100% of subjects were estimated to remain
252 positive to the trimeric S-antibody at the same time point.

253

254 The time-to-negativity for 50% of the seropositive population for the RBD antibody was
255 predicted to be 260 days (95% CI 180-418) and for the trimeric S antibody was 532 days
256 (95% CI 418-667). However, the time-to-negativity was reduced to 67 days in the EDI assay
257 (95% CI 47-91) days. (**Figure 3**).

258

259 Association of Demographic Variables with Antibody Titers: Both BAME participants and
260 those >50 years were significantly associated with increased initial antibody titers. Neither
261 co-morbidities, sex nor BMI were significantly associated with increased antibody titers.
262 Interactions between age and time, sex and time and ethnicity and time were also examined
263 and none were significant (**Supplementary Table 3 and Supplementary Figure 7**).

264 Competitive Binding Assay: There was a strong positive linear correlation between ACE-2
265 receptor blocking and both S-protein ($R^2=0.72$, $p<0.001$) and RBD antibody titers ($R^2=0.77$,
266 $p<0.001$) (**Figure 4**).

267 **Discussion**

268 This prospective study of antibody responses following SARS-CoV-2 infection has estimated
269 the mean half-life of the nucleoprotein (N) antibody to be only 52 days. Consequently, 50%
270 of seropositive individuals will have a negative N-antibody test at 195 days after the start of
271 antibody decay; by contrast 100% are predicted to have a positive test to the trimeric S-
272 antibody at the same time point.

273

274 The half-life of the N-antibody was significantly shorter than that of the trimeric S- and RBD-
275 antibodies with a mean of 81 and 84 days, respectively. These findings have immediate
276 implications for SARS-CoV-2 diagnostic testing particularly widely used serological tests that
277 target N-antibodies. Our findings are consistent with published estimates of SARS-CoV and
278 MERS-CoV humoral dynamics following mild-to-moderate infection.[9,20,22,26–28]

279

280 To date, no studies have comprehensively characterized the nature and duration of
281 antibody responses to different SARS-CoV-2 epitopes, stratified by demographic factors and
282 comorbidities. Long *et al* recently reported waning of SARS-CoV-2-specific IgG and
283 neutralizing antibodies within 2-3 months following infection, decreasing by up to 76% and
284 81%, respectively. This was more pronounced following clinical disease, although 40% of
285 asymptomatic patients (compared to 13% symptomatic) became seronegative in this early
286 convalescent period.[10] Detailed antibody kinetics, however, were not reported.

287 Asymptomatic or mildly symptomatic cohorts have also been largely overlooked, with most
288 studies conducted on hospitalized patients. Our study addresses these gaps, facilitated by
289 the MSD assay which enabled evaluation of absolute antibody titers to three major SARS-
290 CoV-2 epitopes in parallel. Those participants over 50 years of age and BAME participants

291 had higher initial antibody titers to N, S and RBD antigens. Although elderly patients are
292 known to produce lower antibody responses to infection and vaccination,[29,30] increased
293 disease severity in this group may have influenced antibody response. The association
294 between ethnicity and antibody titers needs to be further explored.

295

296 None of the seropositive healthcare workers identified in this study required hospitalization.
297 This is important, given that only 1% of 20-30 year olds and 18% of >80 year olds diagnosed
298 COVID-19 cases are hospitalized, making our study population representative of the
299 majority of community SARS-CoV-2 infections.[31] Severe disease has been associated with
300 higher antibody titers and a longer duration of antibody response following both SARS and
301 MERS.[9,20,21,32] When long-term follow-up studies of hospitalized SARS-CoV-2 patients
302 are published, we therefore expect the half-life estimates to increase due to the increased
303 severity of initial disease.

304

305 Viral neutralization assays remain the gold-standard *in vitro* correlate of protection and the
306 lack of formal neutralization tests is a limitation of the study. ACE-2 receptor competition
307 assays such as the MSD competitive binding assay have been shown to correlate well with
308 formal viral neutralization assays[33]. The ACE-2 competition assay used in this study had a
309 strong positive linear correlation with both S-antibody titers ($R^2=0.72$) and RBD-antibody
310 titers ($R^2=0.77$). Therefore, our observed decline in S-antibody titers is likely to be
311 proportional to declines in functional receptor blocking activity.

312

313 Our negative exponential model of antibody decay assumed a constant rate of decay over
314 time. Negative exponential models of antibody decay are frequently used to model antibody

315 decay,[34,35] and this assumption was supported by plotting the rate of decay over time
316 **(Supplementary Materials Fig.2)**. Nevertheless, increased serial antibody measurements
317 will enable us to test this hypothesis further and refine our half-life predictions accordingly.
318 Whilst the severity of infection among our study participants is likely to be representative of
319 community infection, our findings may be biased to healthcare workers. Moreover, a
320 population of paediatric healthcare workers are more likely to be repeatedly exposed to
321 seasonal CoV infection. We do not know to what extent this influences our measurements
322 of the SARS-CoV-2 humoral response or our estimates of antibody decay. Recent studies
323 have hypothesized that previous exposure to CoVs may confer some protection against
324 SARS-CoV-2[36] and may need to be accounted for when modelling transmission or
325 longevity dynamics.[37] Results are conflicting, however, and it remains unclear if any cross-
326 reactivity is T-cell or antibody mediated.[38–41] Stratifying the SARS-CoV-2 humoral
327 response by seasonal coronavirus titers will enable this potential bias to be understood.

328

329 Although all study participants had clinical symptoms that they attributed to COVID-19
330 **(Supplementary Table 1)** and at least one positive serological test, not all participants were
331 diagnosed by PCR testing. Despite our formal performance evaluation of the MSD assay
332 demonstrating a high sensitivity and specificity, it is theoretically possible that some of our
333 paired positive samples arose from repeated false positive tests. Our estimates of the time-
334 to-negative test for 50% of the population (t_{neg50}) and the time-to-undetectable (t_{u50}) are
335 also dependent on the negative thresholds and lower limits of detection of the assay,
336 respectively. Serological assays with very high positive-negative discrimination and low
337 limits of detection will therefore detect antibody for longer. We repeated our analysis of N-

338 antibody on the EDITM assay which estimated an even lower t_{neg50} of 67 days (95% CI 47-91),
339 suggesting that our estimates of the half-life of the N-antibody are robust between assays.

340

341 Protective immunity is a complex dynamic of host, environmental and viral factors. It can be
342 difficult to disentangle the mechanisms underlying re-infection, including the role played by
343 viral escape (i.e. genetic drift) versus weak or waning immune responses.[42] To date, no
344 definitive quantitative or qualitative correlate-of-protection has been identified for SARS-
345 CoV-2 infection, disease or onward transmission.[9,43] This hampers our understanding of
346 the functional and clinical significance of waning antibodies (particularly N-antibody)
347 observed in this study. Recent findings from animal studies support the role of neutralizing
348 antibodies as a correlate of immunity.[11,16,17] Similarly, a controlled human infection
349 model of seasonal CoV 229E demonstrated waning of IgG-specific antibodies within 1 year,
350 with subsequent reinfection of 6/9 individuals upon homologous viral challenge, albeit
351 without clinical symptoms.[44] If reinfection does occur, severity of disease may therefore
352 be attenuated, unless antibody-dependent disease enhancement by sub-neutralising
353 antibody titers occurs.[42]

354

355 Furthermore, robust memory T-cell responses to specific SARS-CoV-2 peptides are elicited
356 following infection; this also includes seronegative and/or pauci-symptomatic
357 individuals.[15,40,41] As such, anamnestic cell-mediated immune responses may prevent
358 clinically significant re-infection, in keeping with other viral pathogens such as measles and
359 hepatitis A. Prospective evaluation of re-infection alongside T-cell, B-cell and mucosal IgA
360 dynamics should therefore be an urgent priority. The long-term data generated by the Co-

361 STARS study during the predicted future waves of the pandemic will be particularly
362 informative.

363

364 In summary, this prospective cohort study of 137 longitudinally collected serological
365 samples from 67 healthcare workers at Great Ormond Street Hospital has estimated that, in
366 contrast to S-antibody, the half-life of IgG to N-antigen is only 52 days. Fifty percent will
367 therefore have negative N-antibodies 195 days after the start of antibody decay. This has
368 significant implications for sero-prevalence surveys that are based on the measurement of
369 IgG to N-antigen in order to understand the spread of SARS-CoV-2 within the population.
370 Data of this kind directly informs public health policy and responses to future waves of the
371 pandemic. Policymakers relying on these estimates at a population level may need to be
372 cautious, allowing for possible underestimation of the true prevalence of previous SARS-
373 CoV-2 infection and/or exposure. Conversely, the trimeric S-antibody correlated strongly
374 with ACE-2 receptor blockade and persisted longer with 50% of seropositive participants
375 estimated to still test positive at 532 days ($t_{1/2}$ 81 days). This is reassuring for post-vaccine
376 licensure surveillance studies, given that current vaccine candidates are based on
377 recombinant or fragments of S-protein.[45] Our upper bound for any detectable antibodies
378 (S, RBD or N) following mild-to-moderate infection was 1495 days.

379

380 **Acknowledgements**

381 We would like to dedicate this article to the staff members who died of COVID-19 at Great
382 Ormond Street Hospital during the first wave of the pandemic. We would also like to thank
383 all the staff at Great Ormond Street Hospital who have taken part in the study. In addition,
384 we are very grateful for all the hard work undertaken by the Great Ormond Street
385 laboratory staff and the staff in the immunology laboratories both in the Camelia Botnar

386 Laboratory and the Great Ormond Street Institute of Child Health who ensured that all the
387 PCR tests and serological assays were completed in a timely manner. Finally, we would like
388 to acknowledge the support of the Great Ormond Street Hospital Research & Development,
389 Governance, Finance, Management, Estates, Operations and Communications departments.
390

391 **Author contributions**

392 The first draft of the manuscript was prepared by: LG, AS, AT, TL, JH, RT, MH, TB, MJ, HW,
393 ER, AM, CC, JB, KG, DG

394

395 The study was designed and implemented by:

396 LG, AS, AT, TL, JH, RT, MH, TB, MJ, HW, ER, AM, CC, JB, KG, DG & the Co-Stars Team.

397

398 Testing for SARS-CoV-2 RNA and antibody was conducted by: LG, AS, AT, TL, JH, RT, MH, TB,
399 MJ, HW, ER, AM, CC, JB, KG, DG

400

401

402 **Funding statement**

403 In line with UK government policy GOSH NHS Trust made the first diagnostic test available
404 to all staff members in the hospital either as part of the study or outside the study. The
405 GOSH charity provided the funding for follow up testing over the first 6 months of the study.
406 LG declares funding from Wellcome Post-Doctoral Research Fellowship (201470/Z/16/Z). AS
407 declares funding from Wellcome Trust Global Health Clinical Ph.D. Fellowship
408 (220565/Z/20/Z). GOSH NHS Trust hosts a NIHR Funded Biomedical Research Centre which
409 provides infrastructure support permitting translational research.

410

411

412 **Competing interests' statement**

413 All authors have completed the ICMJE uniform disclosure form at
414 http://www.icmje.org/coi_disclosure.pdf and declare: no support from any organisation for
415 the submitted work; no financial relationships with any organisations that might have an
416 interest in the submitted work in the previous three years, no other relationships or
417 activities that could appear to have influenced the submitted work.

418

419 **Exclusive License**

420 The Corresponding Author has the right to grant on behalf of all authors and does grant on
421 behalf of all authors, a worldwide licence
422 ([http://www.bmj.com/sites/default/files/BMJ%20Author%20Licence%20March%202013.do](http://www.bmj.com/sites/default/files/BMJ%20Author%20Licence%20March%202013.doc)
423 c) to the Publishers and its licensees in perpetuity, in all forms, formats and media (whether
424 known now or created in the future), to i) publish, reproduce, distribute, display and store
425 the Contribution, ii) translate the Contribution into other languages, create adaptations,
426 reprints, include within collections and create summaries, extracts and/or, abstracts of the
427 Contribution and convert or allow conversion into any format including without limitation
428 audio, iii) create any other derivative work(s) based in whole or part on the on the
429 Contribution, iv) to exploit all subsidiary rights to exploit all subsidiary rights that currently
430 exist or as may exist in the future in the Contribution, v) the inclusion of electronic links
431 from the Contribution to third party material where-ever it may be located; and, vi) licence
432 any third party to do any or all of the above. All research articles will be made available on
433 an open access basis (with authors being asked to pay an open access fee—see
434 [http://www.bmj.com/about-bmj/resources-authors/forms-policies-and-](http://www.bmj.com/about-bmj/resources-authors/forms-policies-and-checklists/copyright-open-access-and-permission-reuse)
435 [checklists/copyright-open-access-and-permission-reuse](http://www.bmj.com/about-bmj/resources-authors/forms-policies-and-checklists/copyright-open-access-and-permission-reuse)). The terms of such open access
436 shall be governed by a Creative Commons licence—details as to which Creative Commons
437 licence will apply to the research article are set out in our worldwide licence referred to
438 above.

439

440 **Transparency Statement**

441 The lead author affirms that the manuscript is an honest, accurate, and transparent account
442 of the study being reported; that no important aspects of the study have been omitted; and

443 that any discrepancies from the study as planned (and, if relevant, registered) have been
444 explained.

445

446 **References**

- 447 1 Guan W, Ni Z, Hu Y, *et al.* Clinical Characteristics of Coronavirus Disease 2019 in China.
448 *New England Journal of Medicine* 2020;**382**:1708–20. doi:10.1056/NEJMoa2002032
- 449 2 Johns Hopkins University. Coronavirus COVID-19 Global Cases by the Center for Systems
450 Science and Engineering (CSSE) at Johns Hopkins University (JHU).
- 451 3 Zhu N, Zhang D, Wang W, *et al.* A novel coronavirus from patients with pneumonia in
452 China, 2019. *New England Journal of Medicine* 2020;**382**:727–33.
453 doi:10.1056/NEJMoa2001017
- 454 4 Immune responses and immunity to SARS-CoV-2. <https://www.ecdc.europa.eu/en/covid-19/latest-evidence/immune-responses> (accessed 4 Jul 2020).
- 456 5 Ou X, Liu Y, Lei X, *et al.* Characterization of spike glycoprotein of SARS-CoV-2 on virus
457 entry and its immune cross-reactivity with SARS-CoV. *Nature Communications*
458 2020;**11**:1–12. doi:10.1038/s41467-020-15562-9
- 459 6 Walls AC, Park Y-J, Tortorici MA, *et al.* Structure, Function, and Antigenicity of the SARS-
460 CoV-2 Spike Glycoprotein. *Cell* 2020;**181**:281-292.e6. doi:10.1016/j.cell.2020.02.058
- 461 7 Cong Y, Ulasli M, Schepers H, *et al.* Nucleocapsid Protein Recruitment to Replication-
462 Transcription Complexes Plays a Crucial Role in Coronaviral Life Cycle. *Journal of*
463 *Virology* 2019;**94**. doi:10.1128/jvi.01925-19
- 464 8 Wang X, Guo X, Prof A, *et al.* Neutralizing Antibodies Responses to SARS-CoV-2 in COVID-
465 19 Inpatients and Convalescent Patients. *medRxiv* 2020;:2020.04.15.20065623.
466 doi:10.1101/2020.04.15.20065623
- 467 9 Huang AT, Garcia-Carreras B, Hitchings MDT, *et al.* A systematic review of antibody
468 mediated immunity to coronaviruses: antibody kinetics, correlates of protection, and
469 association of antibody responses with severity of disease. *medRxiv*
470 2020;:2020.04.14.20065771. doi:10.1101/2020.04.14.20065771
- 471 10 Long Q-X, Tang X-J, Shi Q-L, *et al.* Clinical and immunological assessment of
472 asymptomatic SARS-CoV-2 infections. *Nature Medicine* 2020;:1–5. doi:10.1038/s41591-
473 020-0965-6
- 474 11 Rogers TF, Zhao F, Huang D, *et al.* Isolation of potent SARS-CoV-2 neutralizing antibodies
475 and protection from disease in a small animal model. *Science (New York, NY)* Published
476 Online First: 15 June 2020. doi:10.1126/science.abc7520

- 477 12 Mehul Suthar AS, Zimmerman MG, Kauffman RC, *et al.* Rapid Generation of Neutralizing
478 Antibody Responses in COVID-19 Patients. *Cell Reports Medicine* 2020;**1**:100040.
479 doi:10.1016/j.xcrm.2020.100040
- 480 13 Jiang S, Hillyer C, Du L. Neutralizing Antibodies against SARS-CoV-2 and Other Human
481 Coronaviruses. *Trends in Immunology*. 2020;**41**:355–9. doi:10.1016/j.it.2020.03.007
- 482 14 Ni L, Ye F, Cheng M-L, *et al.* Detection of SARS-CoV-2-Specific Humoral and Cellular
483 Immunity in COVID-19 Convalescent Individuals Highlights d SARS-CoV-2-specific
484 antibodies are detected in COVID-19 convalescent subjects || Detection of SARS-CoV-2-
485 Specific Humoral and Cellular Immunity in COVID-19 Convalescent Individuals. *Immunity*
486 2020;**52**:971-977.e3. doi:10.1016/j.immuni.2020.04.023
- 487 15 Sekine T, Perez-Potti A, Rivera-Ballesteros O, *et al.* Robust T cell immunity in
488 convalescent individuals with asymptomatic or mild COVID-19. *bioRxiv*
489 2020;:2020.06.29.174888. doi:10.1101/2020.06.29.174888
- 490 16 Munster V, Feldmann F, Williamson B, *et al.* Respiratory disease and virus shedding in
491 rhesus macaques inoculated with SARS-CoV-2. *bioRxiv* 2020;:2020.03.21.001628.
492 doi:10.1101/2020.03.21.001628
- 493 17 Bao L, Deng W, Gao H, *et al.* Reinfection could not occur in SARS-CoV-2 infected rhesus
494 macaques. *bioRxiv* 2020;:1–20. doi:10.1101/2020.03.13.990226
- 495 18 Pollán M, Pérez-Gómez B, Pastor-Barriuso R, *et al.* Prevalence of SARS-CoV-2 in Spain
496 (ENE-COVID): a nationwide, population-based seroepidemiological study. *The Lancet*
497 2020;:S0140673620314835. doi:10.1016/S0140-6736(20)31483-5
- 498 19 Sero-surveillance of COVID-19. GOV.UK.
499 [https://www.gov.uk/government/publications/national-covid-19-surveillance-](https://www.gov.uk/government/publications/national-covid-19-surveillance-reports/sero-surveillance-of-covid-19)
500 [reports/sero-surveillance-of-covid-19](https://www.gov.uk/government/publications/national-covid-19-surveillance-reports/sero-surveillance-of-covid-19) (accessed 8 Jul 2020).
- 501 20 Ho MS, Chen WJ, Chen HY, *et al.* Neutralizing antibody response and SARS severity.
502 *Emerging Infectious Diseases* 2005;**11**:1730–7. doi:10.3201/eid1111.040659
- 503 21 Cao W-C, Liu W, Zhang P-H, *et al.* Disappearance of Antibodies to SARS-Associated
504 Coronavirus after Recovery. *New England Journal of Medicine* 2007;**357**:1162–3.
505 doi:10.1056/NEJMc070348
- 506 22 Choe P, Perera R, Park W, *et al.* MERS-CoV antibody responses 1 year after symptom
507 onset, South Korea, 2015. *ncbi.nlm.nih.gov*
- 508 23 Public Health England. Chapter 6: Contraindications and special considerations. In: *The*
509 *Green Book: Immunisation against infectious disease*. 2017.
- 510 24 Brown JR, Atkinson L, Shah D, *et al.* Validation of an extraction-free RT-PCR protocol for
511 detection of SARS-CoV2 RNA. *medRxiv* 2020;:2020.04.29.20085910.
512 doi:10.1101/2020.04.29.20085910

- 513 25 Hou H, Wang T, Zhang B, *et al.* Detection of IgM and IgG antibodies in patients with
514 coronavirus disease 2019. *Clinical and Translational Immunology* 2020;**9**.
515 doi:10.1002/cti2.1136
- 516 26 Alshukairi AN, Khalid I, Ahmed WA, *et al.* Antibody response and disease severity in
517 healthcare worker MERS survivors. *Emerging Infectious Diseases* 2016;**22**:1113–5.
518 doi:10.3201/eid2206.160010
- 519 27 Cao WC, Liu W, Zhang PH, *et al.* Disappearance of antibodies to SARS-associated
520 coronavirus after recovery [18]. *New England Journal of Medicine*. 2007;**357**:1162–3.
521 doi:10.1056/NEJMc070348
- 522 28 Wu LP, Wang NC, Chang YH, *et al.* Duration of antibody responses after severe acute
523 respiratory syndrome. *Emerging Infectious Diseases* 2007;**13**:1562–4.
524 doi:10.3201/eid1310.070576
- 525 29 Siegrist CA, Aspinall R. B-cell responses to vaccination at the extremes of age. *Nature*
526 *Reviews Immunology*. 2009;**9**:185–94. doi:10.1038/nri2508
- 527 30 Boraschi D, Italiani P. Immunosenescence and vaccine failure in the elderly: Strategies
528 for improving response. *Immunology Letters* 2014;**162**:346–53.
529 doi:10.1016/j.imlet.2014.06.006
- 530 31 Verity R, Okell LC, Dorigatti I, *et al.* Estimates of the severity of coronavirus disease
531 2019: a model-based analysis. *The Lancet Infectious diseases* 2020;**0**.
532 doi:10.1016/S1473-3099(20)30243-7
- 533 32 Payne DC, Iblan I, Rha B, *et al.* Persistence of antibodies against middle east respiratory
534 syndrome coronavirus. *Emerging Infectious Diseases* 2016;**22**:1824–6.
535 doi:10.3201/eid2210.160706
- 536 33 A SARS-CoV-2 surrogate virus neutralization test (sVNT) based on antibody-mediated
537 blockage of ACE2-spike (RBD) protein-protein interaction. Published Online First: 23
538 April 2020. doi:10.21203/rs.3.rs-24574/v1
- 539 34 Antia A, Ahmed H, Handel A, *et al.* Heterogeneity and longevity of antibody memory to
540 viruses and vaccines. *PLOS Biology* 2018;**16**:e2006601.
541 doi:10.1371/journal.pbio.2006601
- 542 35 Balelli I, Pasin C, Prague M, *et al.* A model for establishment, maintenance and
543 reactivation of the immune response after vaccination against Ebola virus. *Journal of*
544 *Theoretical Biology* 2020;**495**:110254. doi:10.1016/j.jtbi.2020.110254
- 545 36 Wang C, Li W, Drabek D, *et al.* A human monoclonal antibody blocking SARS-CoV-2
546 infection. *Nature Communications* 2020;**11**:1–6. doi:10.1038/s41467-020-16256-y
- 547 37 Kissler SM, Tedijanto C, Goldstein E, *et al.* Projecting the transmission dynamics of SARS-
548 CoV-2 through the postpandemic period. *Science* 2020;**;**eabb5793.
549 doi:10.1126/science.abb5793

- 550 38 Ng K, Faulkner N, Cornish G, *et al.* Pre-existing and de novo humoral immunity to SARS-
551 CoV-2 in humans. *bioRxiv* 2020;:2020.05.14.095414. doi:10.1101/2020.05.14.095414
- 552 39 Lv H, Wu NC, Tak-Yin Tsang O, *et al.* Cross-reactive Antibody Response between SARS-
553 CoV-2 and SARS-CoV Infections II Cross-reactive Antibody Response between SARS-CoV-
554 2 and SARS-CoV Infections. *CellReports* 2020;31:107725.
555 doi:10.1016/j.celrep.2020.107725
- 556 40 Dong T, Peng Y, Mentzer AJ, *et al.* Broad and strong memory CD4+ and CD8+ T cells
557 induced by SARS-CoV-2 in UK convalescent COVID-19 patients. *bioRxiv*
558 2020;:2020.06.05.134551. doi:10.1101/2020.06.05.134551
- 559 41 Grifoni A, Weiskopf D, Ramirez SI, *et al.* Targets of T Cell Responses to SARS-CoV-2
560 Coronavirus in Humans with COVID-19 Disease and Unexposed Individuals. *Cell*
561 2020;181:1489. doi:10.1016/j.cell.2020.05.015
- 562 42 Kellam P, Barclay W. The dynamics of humoral immune responses following SARS-CoV-2
563 infection and the potential for reinfection. *Journal of General Virology* 2020;:jgv001439.
564 doi:10.1099/jgv.0.001439
- 565 43 Melgaço JG, Azamor T, Ano Bom APD. Protective immunity after COVID-19 has been
566 questioned: What can we do without SARS-CoV-2-IgG detection? *Cellular Immunology*.
567 2020;353:104114. doi:10.1016/j.cellimm.2020.104114
- 568 44 Callow' KA, Parry2 HF, Sergeant1 M, *et al.* The time course of the immune response to
569 experimental coronavirus infection of man The change in the concentration of total IgA
570 and protein in nasal. 1990.
- 571 45 Callaway E. The race for coronavirus vaccines: a graphical guide. *Nature* 2020;580:576–
572 7. doi:10.1038/d41586-020-01221-y

573

574 **Figure Legends**

575

576 **Figure 1**

577 **Bayesian log-linear model fits for the decay of the nucleoprotein (N) antibody, the trimeric**
578 **spike (S) antibody and the receptor binding domain (RBD) antibody from 21 days**
579 **following symptom onset. Confidence limits on the slope without individual random**
580 **effects are plotted in dark grey, with individual effects light grey. Red dotted line**
581 **represents the limit of seropositivity**

582

583 **Figure 2**

584 **Posterior probability for the distribution of the half-life taken from the start of antibody**
585 **decay at 21 days for the nucleoprotein (N) (CoV.2.N green) antibody, the spike (S) protein**
586 **antibody (Co.V.2.S red) and the RBD antibody (CoV.2.RBD blue).**

587

588 **Figure 3**

589 **A) Time-to-negativity curve by the MSD assay for the nucleoprotein (N) antibody (green),**
590 **the spike (S) antibody (red) and the receptor binding domain (RBD) antibody (blue).**

591 **B) Time-to-negativity curve by the EDI assay for the nucleoprotein (N) antibody (green).**

592 **Note: The EDI assay only measures the N-antibody.**

593

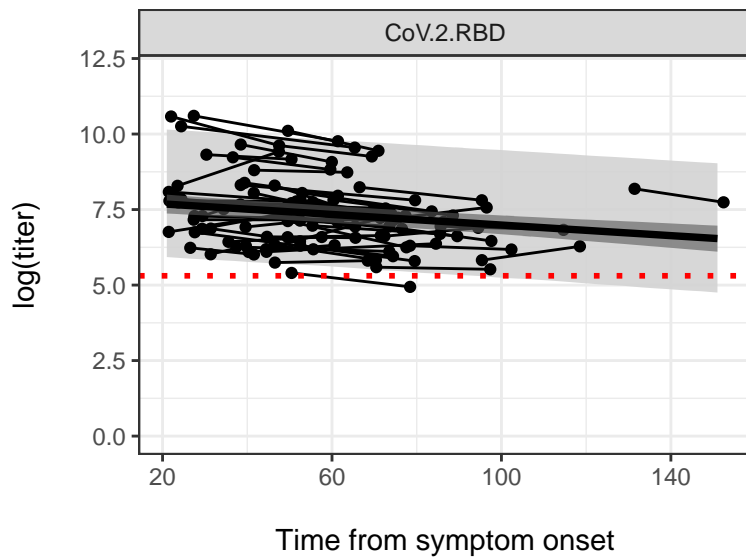
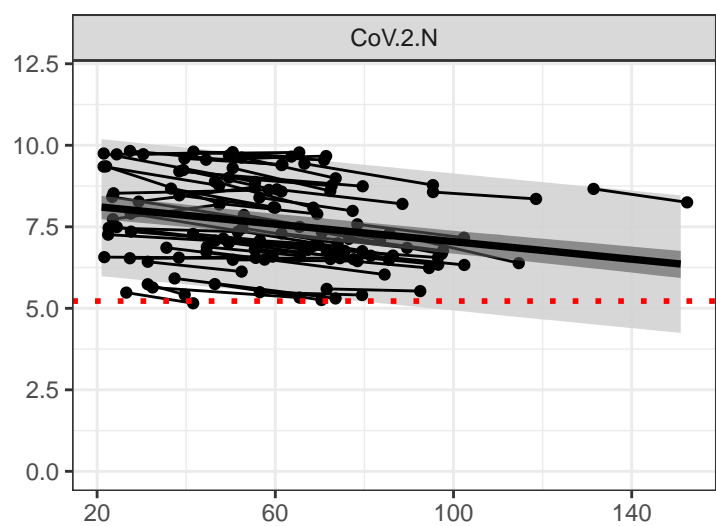
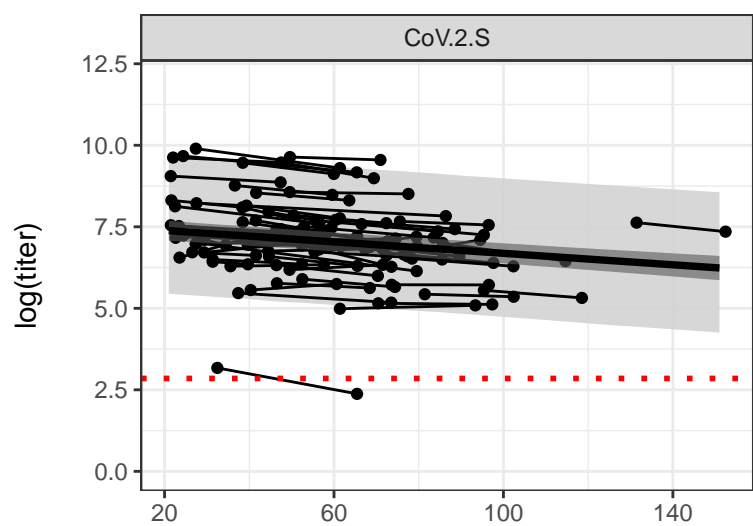
594 **Figure 4**

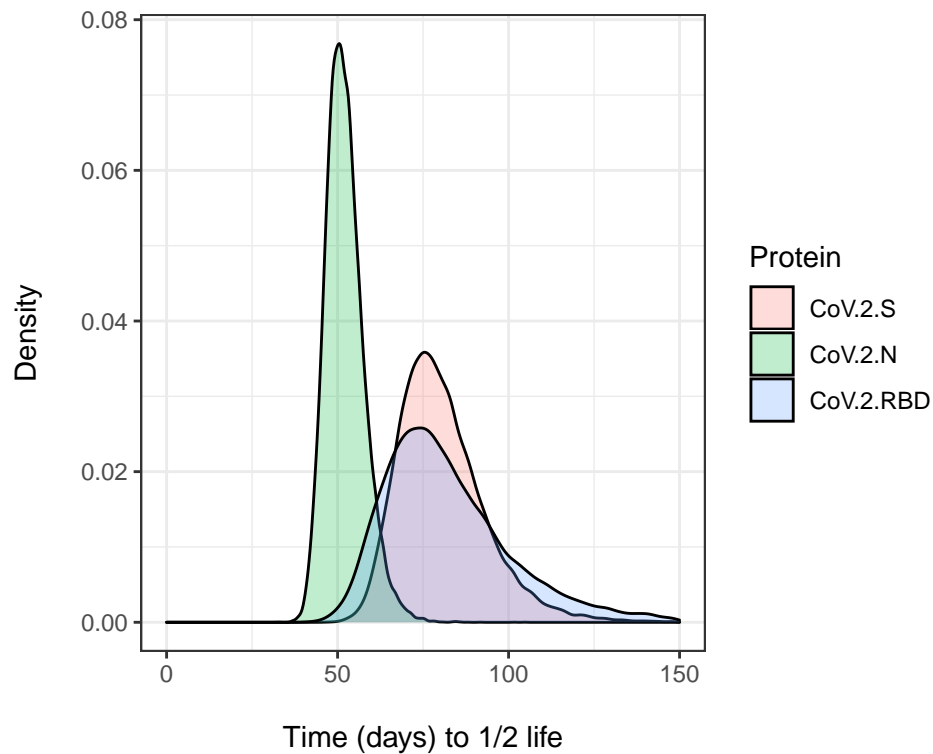
595 **The correlation of Spike and RBD antibody titers with ACE-2 receptor blocking.**

596

597

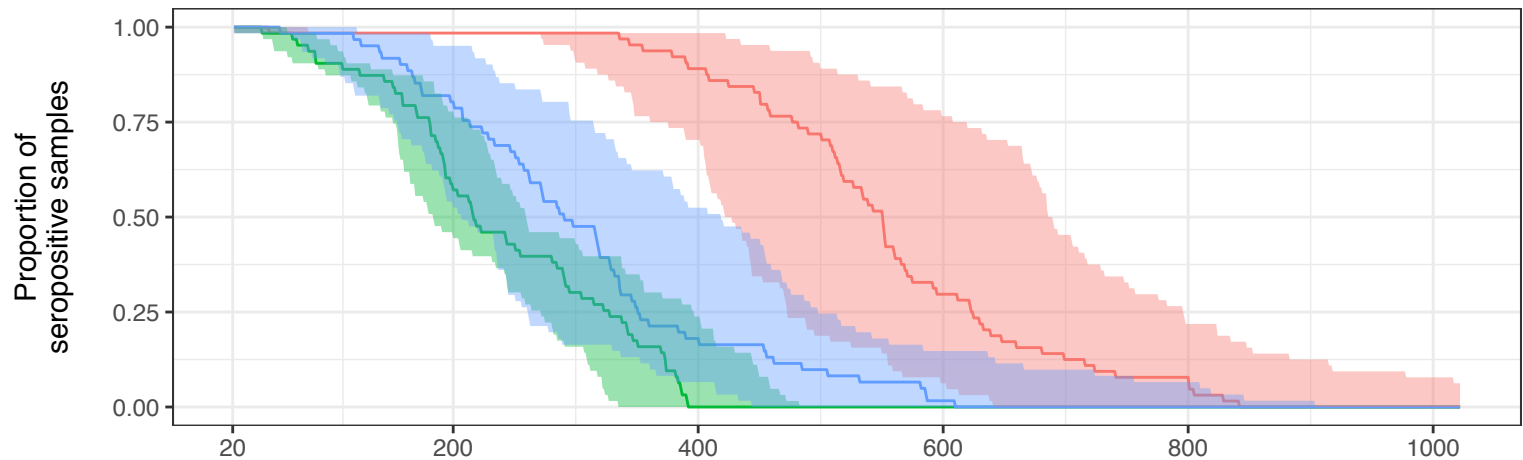
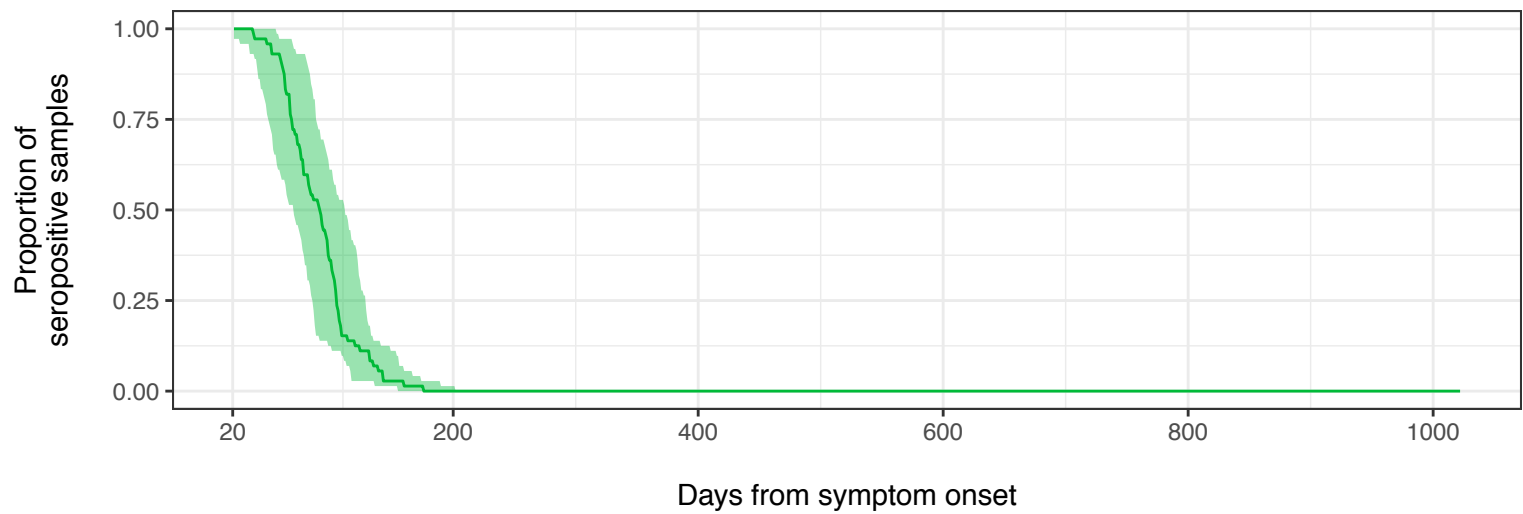
598



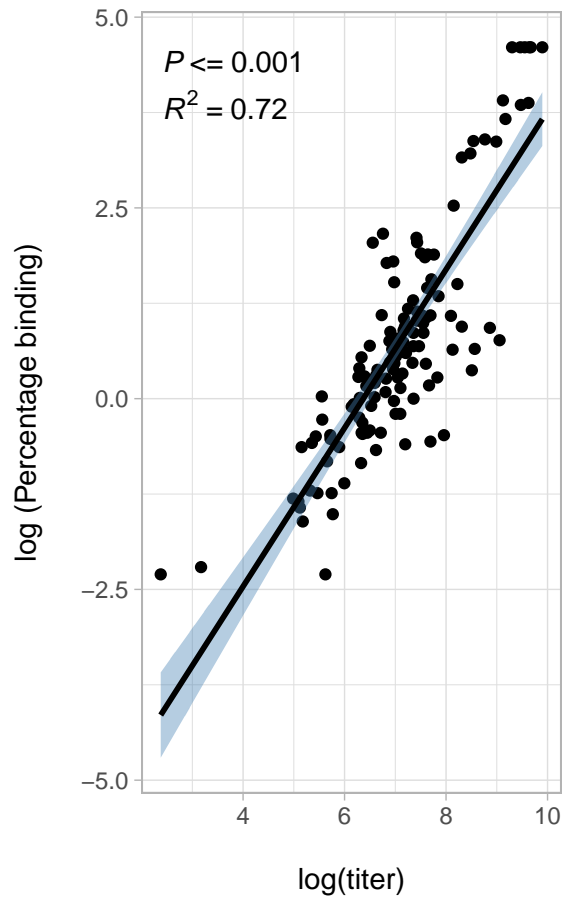


a

CoV.2.S CoV.2.N CoV.2.RBD

**b**

CoV.2.S



CoV.2.RBD

