

Clinical and functional connectivity outcomes of 5-Hz repeated transcranial magnetic stimulation as an add-on treatment in cocaine use disorder: a double-blind randomized controlled trial.

Eduardo A. Garza-Villarreal^{1,2,*}, Ruth Alcala-Lozano², Sofia Fernandez-Lozano^{2,3}, Erik Morelos-Santana^{2,3}, Alan Dávalos^{2,4}, Viviana Villicaña^{2,5}, Sarael Alcauter¹, F. Xavier Castellanos^{6,7}, Jorge J. Gonzalez-Olvera²

Affiliations

1. Instituto de Neurobiología, Universidad Nacional Autónoma de México (UNAM) campus Juriquilla, Queretaro, Mexico
2. Subdirección de Investigaciones Clínicas, Instituto Nacional de Psiquiatría “Ramón de la Fuente Muñiz”, Mexico City, Mexico
3. Faculty of Psychology, Universidad Nacional Autónoma de México (UNAM), Mexico City, Mexico
4. Faculty of Medicine, Universidad Nacional Autónoma de México (UNAM), Mexico City, Mexico
5. Faculty of Psychology, Universidad Anahuac Sur, Mexico City, Mexico
6. Department of Child and Adolescent Psychiatry, NYU Grossman School of Medicine, New York, NY, USA
7. Nathan Kline Institute for Psychiatric Research, Orangeburg, NY, USA

Running title: rTMS RCT in cocaine use disorder

Corresponding:

Eduardo A. Garza-Villarreal, MD, PhD
Instituto de Neurobiología, Laboratorio B-03,
Universidad Nacional Autónoma de México (UNAM) campus Juriquilla,
Boulevard Juriquilla 3001,
Santiago de Querétaro, Querétaro, México
C.P. 76230
Phone: (442) 238-1038
Email: egarza@comunidad.unam.mx

Abstract

BACKGROUND: Cocaine use disorder (CUD) is a global condition lacking effective treatment.

Repeated magnetic transcranial stimulation (rTMS) may reduce craving and frequency of cocaine use, but little is known about its efficacy and neural effects.

METHODS: Using a double-blind placebo-controlled randomized clinical trial (RCT)

[NCT02986438], we sought to elucidate short- and long-term clinical benefits of 5-Hz rTMS as an add-on to standard treatment in CUD patients and discern underlying functional connectivity effects using magnetic resonance imaging. Forty-four randomly assigned CUD patients completed the 2-week double-blind acute phase [Sham (n=20, 2f/18m) and Active (n=24, 4f/20m)], in which they received 2 daily sessions of rTMS (5,000 pulses) on the left dorsolateral prefrontal cortex. Subsequently, n=20 CUD patients continued to open-label maintenance (2 weekly sessions for up to 6 months). Measures were acquired at baseline, 2 weeks, 3 months and 6 months.

RESULTS: Overall, 5-Hz rTMS plus standard treatment for 2 weeks significantly reduced craving and impulsivity in the Active group; decreased impulsivity correlated with improvements in functional connectivity in executive control and default mode networks. Clinical and functional connectivity effects were maintained for 3 months but they dissipated by 6 months. We did not observe reduction of positive cocaine urine tests, however, self-reported frequency and grams consumed for 6 months were reduced.

CONCLUSIONS: With this RCT we show that 5-Hz rTMS has potential promise as an adjunctive treatment for CUD and merits further research.

Introduction

Cocaine use disorder (CUD) is characterized by impulsivity and intense craving, with consequent risk-taking and antisocial behavior and health sequelae that can include violence, hospitalizations and death (1). There are no approved medications for CUD and standard-of-care psychosocial treatments are associated with high dropout rates (2,3).

Accordingly, new treatment approaches are needed; neuromodulation is an attractive contender (4). Repeated transcranial magnetic stimulation (rTMS) has produced positive clinical outcomes in substance use disorders (SUDs), including reduction of craving and use in CUD (5–10). For example, 15 Hz rTMS to the left dorsolateral prefrontal cortex (IDL PFC) reduced cocaine use frequency (7). However, only one randomized controlled trial (RCT) (9) and one trial using single-blind sham stimulation (11) have been conducted. Thus, conclusions regarding the efficacy of rTMS for CUD are premature.

The neurobiological substrates of the potential clinical benefits of rTMS also remain under investigation. Circuits involving IDL PFC and ventromedial prefrontal cortex (vmPFC) have been reported to be pathological in CUD (10). Hypofunctioning frontostriatal functional connectivity (FC) in CUD has been supported by animal models (12), in which prelimbic cortex (putative DL PFC homolog) stimulation reduced cocaine-seeking behavior, and inhibition increased it (13). Evidence suggests that both excitatory IDL PFC and inhibitory vmPFC stimulation could reduce CUD symptoms (11,14). The utility of excitatory and inhibitory stimulation is consistent with the apparent opposing intrinsic FC of the IDL PFC and vmPFC, i.e., spontaneous fluctuations of the BOLD signal in IDL PFC and vmPFC are negatively correlated in healthy controls (15), which might reflect their opposing functional and cognitive mechanisms in CUD (16). Studies in major depression have shown that IDL PFC and subgenual FC, which are also negatively correlated,

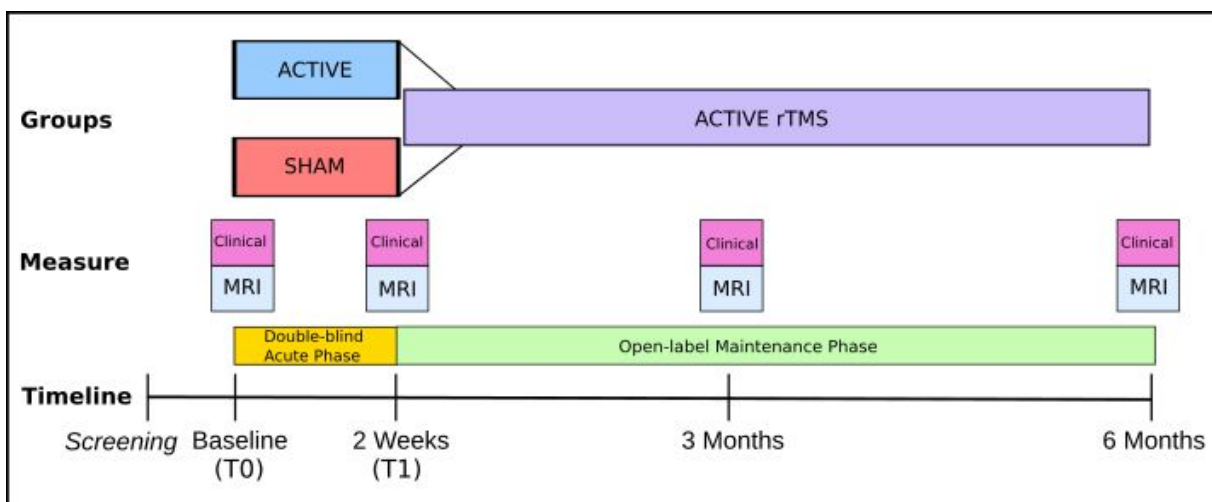
predicts improvement to rTMS treatment (17,18), highlighting a possible parallel with IDLPFC-vmPFC FC in CUD.

Here, we sought to determine the clinical efficacy of adding excitatory IDLPFC rTMS in CUD to standard therapy and to potentially identify circuit-based clinical target engagement in a double-blind RCT with longitudinal magnetic resonance imaging.

Methods and Materials

Full methodological details can be found in the Supplementary material. Briefly, we recruited cocaine users meeting inclusion and exclusion criteria (Table S1). Relevant inclusion criteria were: 1) age 18 - 50 years, and 2) high consumption cocaine use for at least 1 year. The study was conducted at the Clinical Research Division of the National Institute of Psychiatry in Mexico City, Mexico, and all procedures were approved by the Institutional Ethics Research Committee and registered (CEI/C/070/2016; ClinicalTrials.gov NCT02986438). All participants were fully informed and provided written informed consent, per the Declaration of Helsinki. Figure S1 shows the CONSORT flowchart with study enrollment, visits and attrition; Figure 1 shows study design in detail. Briefly, we performed a 2-week parallel group double-blind RCT (Sham/Active) named the *acute phase*, followed by an open-label trial of chronic maintenance treatment, the *maintenance phase* as an add-on to standard treatment (Table S2). Clinical and MRI data acquisition were obtained at Baseline (T0), 2 weeks (T1), 3 months and 6 months.

Figure 1. Design of the randomized clinical trial.



MRI = Magnetic resonance imaging session; T0 = Time 0 or baseline; T1 = Time 1.

Clinical assessments

For this study, primary outcome measures were 1) craving and 2) urine tests; secondary outcomes were: 1) impulsivity, 2) depression, 3) anxiety, and 4) sleep quality. Functional connectivity (FC) measured with resting state functional magnetic resonance imaging (rsfMRI) was a *tertiary* outcome to determine circuit-based clinical target engagement. Acute and maintenance phases were analyzed using linear Mixed Models and equivalent methods, to ascertain main and interaction effects.

Transcranial magnetic stimulation

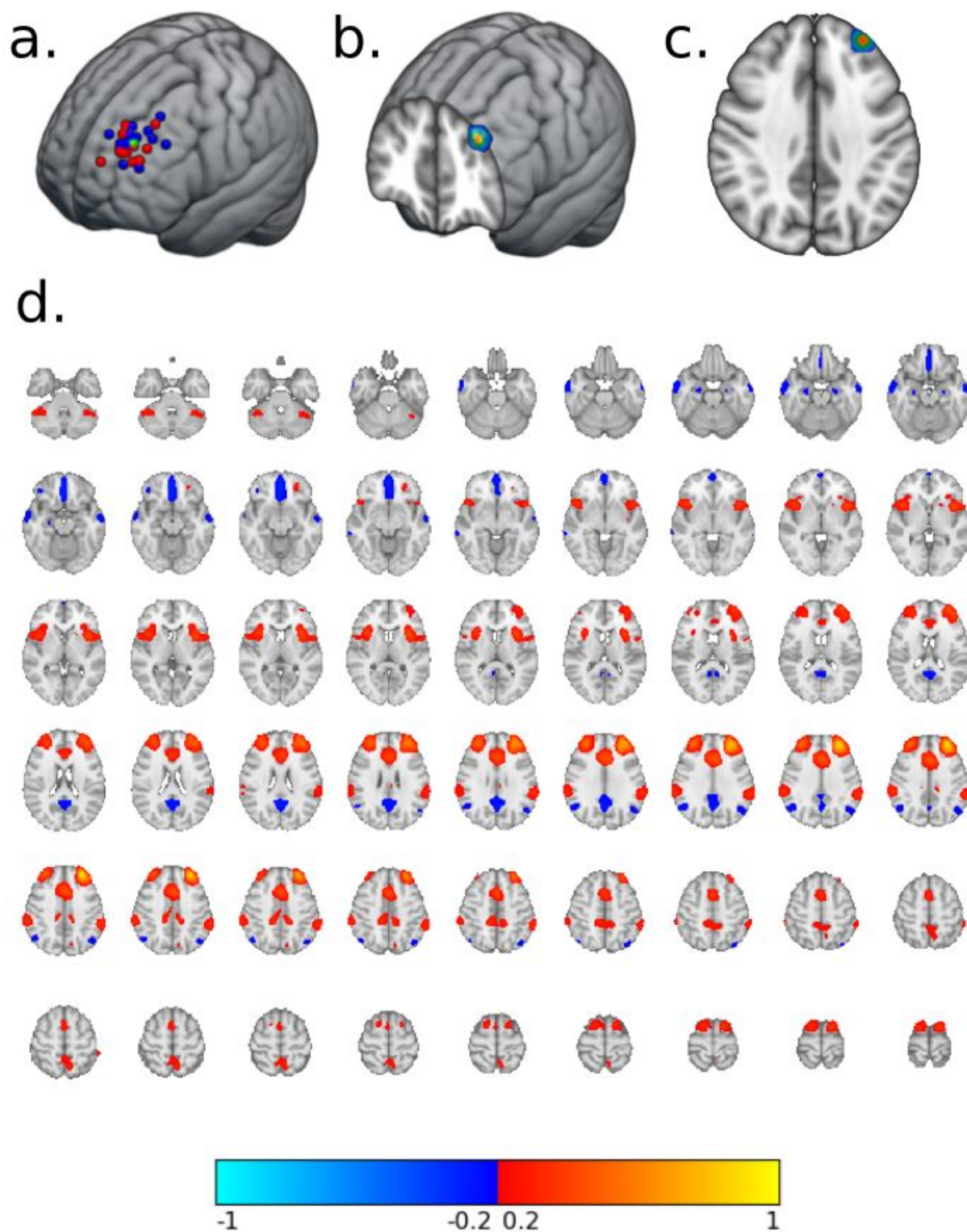
For the acute phase we used a MagPro R30+Option magnetic stimulator and a figure-eight B65-A/P coil (Magventure, Denmark); for the maintenance phase, we used a MagPro R30 stimulator and a figure-eight MCF-B70 coil (Magventure, Denmark). During the 10 weekdays of the acute phase, 5,000 pulses per day were delivered at 5-Hz. The maintenance phase

comprised two 5-Hz (5,000 pulses per day) sessions per week. Stimulation was delivered at 100% motor threshold to the IDLPFC, determined with standard clinical methods. Because a Brain Navigator was not available, we used a vitamin E capsule fiducial during MRI acquisition to identify the actual stimulation cortical target where rTMS was delivered (Fig. 2).

Magnetic resonance imaging

We acquired T1-weighted structural images and rsfMRI (10 min duration and TR=2s). We performed quality control and preprocessing using MRIQC version 0.15.2rc1 (19) and FMRIPREP version 1.5.5 [1, 2, RRID:SCR_016216]. Resting-state time series data from all participants and sessions were then processed using the XCP Engine v1.0 (20) with nuisance regression using the Power et al., pipeline (21). Residual rsfMRI volumes were used for FC analysis. We first obtained normative IDLPFC FC following published methods (17) (Figure 2). The resulting normative IDLPFC FC map was clustered to obtain a vmPFC mask for ROI analysis (Table S4 & Fig. S3). We then calculated IDLPFC-whole brain FC in each subject and session, using the average IDLPFC cone mask. Because our primary interest was IDLPFC - vmPFC FC, the *acute phase* was analyzed with a 2 x 2 Mixed Model (group by session interaction) with the vmPFC mask as our ROI. Afterwards, we explored the remaining clusters as ROIs with the same model. We then correlated the FC of significant clusters with significant clinical variables. The maintenance phase was analyzed extracting the mean FC from the resulting cluster or clusters in the acute phase analysis. Post-hoc, we calculated the individual FC of the significant vmPFC cluster from the acute phase analysis as the seed due to the importance of this region in SUDs, and performed a whole-brain 2 x 2 mixed model analysis (group by session) of the acute phase and the maintenance phase.

Figure 2. rTMS cortical targets and normative functional connectivity.



a. Individual cortical rTMS targets of sham (red) and active (blue) groups, with the average target location (green); b. & c. Average target “cone” seed used to extract normative functional connectivity of the IDLPFC in the Human Connectome Project dataset (n = 1000); d. Normative functional connectivity map of the IDLPFC, from positive (red-yellow) to negative (blue-light blue) correlation.

Results

The Sham and Active groups did not differ in demographic characteristics (Table 1), nor in baseline (T0) clinical measures (Table 2).

Table 1. Demographic characteristics between groups.

	Group		p
	SHAM (N=20)	ACTIVE (N=24)	
Sex			0.84
- Male	18 (90.0%)	20 (83.3%)	
- Female	2 (10.0%)	4 (16.7%)	
Age	33.3 ± 8.7	35.8 ± 7.1	0.30
Years of education	12.9 ± 2.7	13.2 ± 3.0	0.79
Marital status			0.90
- single	13 (65.0%)	13 (54.2%)	
- married	4 (20.0%)	5 (20.8%)	
- divorced	1 (5.0%)	3 (12.5%)	
- separated	1 (5.0%)	2 (8.3%)	
- widowed	1 (5.0%)	1 (4.2%)	
Monthly income (MXN)	5,080 ± 6,631	5,104 ± 6,910	0.99
Employment (last 3 years)			
- full time	11 (55.0%)	15 (62.5%)	
- half time	2 (10.0%)	5 (20.8%)	
- free lance	5 (25.0%)	4 (16.7%)	
- student	1 (5.0%)	0 (0.0%)	
- retired	0 (0.0%)	0 (0.0%)	
- housewife	0 (0.0%)	0 (0.0%)	
- unemployed	1 (5.0%)	0 (0.0%)	
Main substance of use			0.17
- crack-cocaine	17 (85.0%)	24 (100.0%)	
- cocaine	3 (15.0%)	0 (0.0%)	
Onset age of cocaine use	21.8 ± 6.8	23.4 ± 6.1	0.40
Years of cocaine use	10.1 ± 7.9	11.3 ± 7.9	0.61
Socioeconomic status			0.95
- AB (High)	2 (10.0%)	2 (8.3%)	
- C+ (Middle high)	4 (20.0%)	7 (29.2%)	
- C (Middle)	4 (20.0%)	5 (20.8%)	
- C- (Middle)	5 (25.0%)	4 (16.7%)	
- D+ (Middle low)	3 (15.0%)	3 (12.5%)	
- D (Low)	2 (10.0%)	2 (8.3%)	
- E (Extreme poverty)	0 (0.0%)	1 (4.2%)	

MXN = Mexican pesos, p = p-value, continuous normal variables = mean ± standard deviation, continuous non-normal variable = median and interquartile range, nominal = count (percentage from group). Statistical analyses are described in the methods section.

Table 2. Baseline outcome measures per group.

	Group		
	SHAM (N=20)	ACTIVE (N=24)	p
Primary outcome measures			
Craving: CCQ - General	192.4 ± 47.9	187.2 ± 47.8	0.72
Craving: CCQ - Now	141.2 ± 49.4	148.5 ± 46.5	0.62
Craving: VAS	2.6 ± 2.8	3.9 ± 3.6	0.17
Urine test: Cocaine			0.89
- positive	7 (35.0%)	10 (41.7%)	
- negative	13 (65.0%)	14 (58.3%)	
Secondary outcome measures			
Impulsivity: BIS11 - Total	60.8 ± 17.0	64.8 ± 16.8	0.44
BIS 11 - Subdivisions			
- Cognitive	17.6 ± 5.4	18.2 ± 5.7	0.72
- Motor	18.9 ± 7.7	20.5 ± 7.8	0.49
- Non-Planned	24.2 ± 8.2	26.0 ± 6.0	0.42
Anxiety: HARS score	21.4 ± 15.8	17.8 ± 12.6	0.40
HARS categories			0.86
- mild severity	10 (50.0%)	14 (58.3%)	
- mild to moderate severity	2 (10.0%)	2 (8.3%)	
- moderate-severe	8 (40.0%)	8 (33.3%)	
Depression: HDRS score	13.9 ± 10.2	13.8 ± 7.5	0.94
HDRS categories			0.85
- normal	8 (40.0%)	7 (29.2%)	
- minor depression	2 (10.0%)	2 (8.3%)	
- less than major depressive	3 (15.0%)	7 (29.2%)	
- major depression	6 (30.0%)	7 (29.2%)	
- more than major depression	1 (5.0%)	1 (4.2%)	
Sleep: PQSI total score	10.7 ± 5.1	10.8 ± 4.2	0.95
Global quality of sleep			1.00
- Good	3 (15.0%)	3 (12.5%)	
- Bad	17 (85.0%)	21 (87.5%)	

BIS 11 = Barrat Impulsiveness Scale, CCQ = Cocaine Craving Questionnaire, VAS = Visual analogue scale, HARS = Hamilton Anxiety Rating Scale, HDRS = Hamilton Depression Rating Scale, PSQI = Pittsburgh Sleep Quality Index, p = p-value.

Acute phase clinical assessment

Patients assigned to Active rTMS showed a significant reduction in craving visual analog scale (VAS) compared to Sham after 2 weeks of intensive treatment (group x time (GxT) interaction: $t=-2.609$, $p=0.013$, $fdr=0.025$, $d=0.77$) (Table 3). The effect on the Cocaine Craving

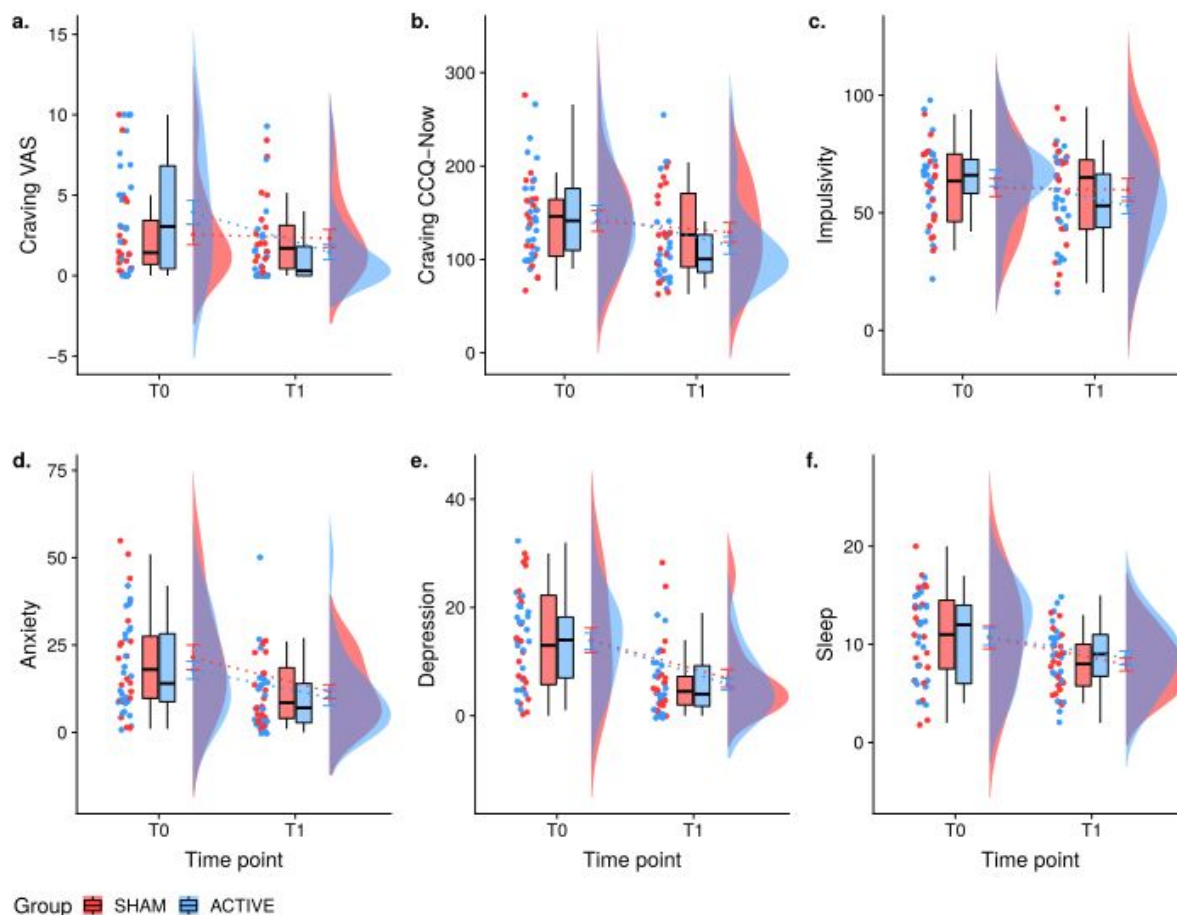
Questionnaire Now section (CCQ-Now) did not reach significance (GxT interaction: $t=-1.631$, $p=0.11$, $fdr=0.11$, $d=0.48$), although VAS and CCQ-Now were significantly correlated at all time points ($t=4.17$, $p=0.0002$, $r=0.54$). Plots suggest that patients with high VAS at T0 had greater VAS reductions at T1 (Fig. 3). Impulsivity scores were also significantly reduced by Active compared to Sham stimulation (GxT: $t=-2.677$, $p=0.011$, $fdr=0.042$, $d=0.79$). Cocaine positive urine tests did not differ significantly; urine test results after 2 weeks of rTMS were: 1) Maintained negative (Sham $n=12$ [60%]; Active $n=12$ [50%]), 2) maintained positive (Sham $n=5$ [25%]; Active=6 [25%]), 3) changed from negative to positive (Sham $n=2$ [10%]; Active $n=3$ [12.5%]), and 4) changed from positive to negative (Sham $n=1$ [5%]; Active $n=3$ [12.5%]) (see Table S8). Differently, anxiety, depression or sleep quality measures improved similarly and significantly in both groups after 2 weeks. Similar nonspecific results on quality of life (WHODAS) and broad psychopathology (SCL90-R) measures are shown in Figures S4 and Table S11.

Table 3. Outcome measures for the 2-week double-blind acute phase.

	Group				Group	Time point	Interaction
	SHAM		ACTIVE				
	Time point		Time point				
	T0 (N=20)	T1 (N=20)	T0 (N=24)	T1 (N=24)			
Primary outcome measures							
Craving: CCQ - Now	141.2 ± 49.4	129.2 ± 46.2	148.5 ± 46.5	115.2 ± 45.6	t = 0.60, p = 0.55	t = -1.26, p = 0.22	t = -1.63, p = 0.11
Craving: VAS	2.6 ± 2.8	2.3 ± 2.5	3.9 ± 3.6	1.5 ± 2.4	t = 1.63, p = 0.11	t = -0.38, p = 0.71	t = -2.61, p = 0.013*
Urine test: Cocaine							X ² = 0.024, p = 0.88
- positive	7 (35.0%)	9 (45.0%)	10 (41.7%)	10 (41.7%)			
- negative	13 (65.0%)	11 (55.0%)	14 (58.3%)	14 (58.3%)			
Secondary outcome measures							
Impulsivity: BIS11 - Total	60.8 ± 17.0	59.8 ± 21.4	64.8 ± 16.8	53.1 ± 17.4	t = 0.79, p = 0.43	t = -0.32, p = 0.75	t = -2.68, p = 0.011*
BIS11 - Cognitive	17.6 ± 5.4	18.2 ± 7.0	18.2 ± 5.7	14.4 ± 6.0			
BIS11 - Motor	18.9 ± 7.7	19.4 ± 8.4	20.5 ± 7.8	15.8 ± 6.9			
BIS11 - Non-Planned	24.2 ± 8.2	22.2 ± 10.3	26.0 ± 6.0	23.0 ± 6.4			
Anxiety: HARS score	21.4 ± 15.8	11.7 ± 9.0	17.8 ± 12.6	10.0 ± 11.3	t = -0.97, p = 0.34	t = -3.15, p = 0.003*	t = 0.46, p = 0.65
HARS categories							
- mild severity	10 (50.0%)	15 (75.0%)	14 (58.3%)	21 (87.5%)			
- mild to moderate severity	2 (10.0%)	2 (10.0%)	2 (8.3%)	1 (4.2%)			
- moderate-severe	8 (40.0%)	3 (15.0%)	8 (33.3%)	2 (8.3%)			
Depression: HDRS score	13.9 ± 10.2	6.9 ± 7.5	13.8 ± 7.5	5.8 ± 5.5	t = -0.23, p = 0.82	t = -3.55, p = 0.001*	t = -0.32, p = 0.75
HDRS categories							
- normal	8 (40.0%)	15 (75.0%)	7 (29.2%)	16 (66.7%)			
- minor depression	2 (10.0%)	2 (10.0%)	2 (8.3%)	6 (25.0%)			
- less than major depressive	3 (15.0%)	1 (5.0%)	7 (29.2%)	0 (0.0%)			
- major depression	6 (30.0%)	2 (10.0%)	7 (29.2%)	2 (8.3%)			
- more than major depression	1 (5.0%)	0 (0.0%)	1 (4.2%)	0 (0.0%)			
Sleep: PSQI total score	10.7 ± 5.1	8.0 ± 2.9	10.8 ± 4.2	8.6 ± 3.4	t = -0.14, p = 0.89	t = -2.75, p = 0.009*	t = 0.43, p = 0.67
Global quality of sleep							
- Good	3 (15.0%)	5 (25.0%)	3 (12.5%)	4 (16.7%)			
- Bad	17 (85.0%)	15 (75.0%)	21 (87.5%)	20 (83.3%)			

*BIS 11 = Barratt Impulsiveness Scale, CCQ = Cocaine Craving Questionnaire, VAS = Visual analogue scale, HARS = Hamilton Anxiety Rating Scale, HDRS = Hamilton Depression Rating Scale, PSQI = Pittsburgh Sleep Quality Index, t = t-value, p = p-value, X² = Cochran-Mantel-Haenszel statistic, * = statistically significant.*

Figure 3. Raincloud interaction plots of the outcome measures for the 2-week double-blind acute phase.



From left to right the plots shows at each time point: 1) the individual jittered points per measure per subject, 2) boxplots with median and whiskers without outliers, 3) means with error bars (SE) with dotted lines connecting each group's mean between time points, and 4) flat violin plots showing the data distribution per group. T0 = Time 0 or baseline; T1 = Time 1 or 2 weeks; VAS = visual analog scale; CCQ = Cocaine Craving Questionnaire.

Acute phase functional connectivity

We found a significant interaction in small vmPFC bilateral clusters (Table 4), in which the Active group showed higher IDLPFC-vmPFC FC than the Sham group at T1 (Fig. 4). The FC change correlated significantly with impulsivity changes ($t=-2.38$, $df=42$, $p=0.02$, $r=-0.35$) (Fig.

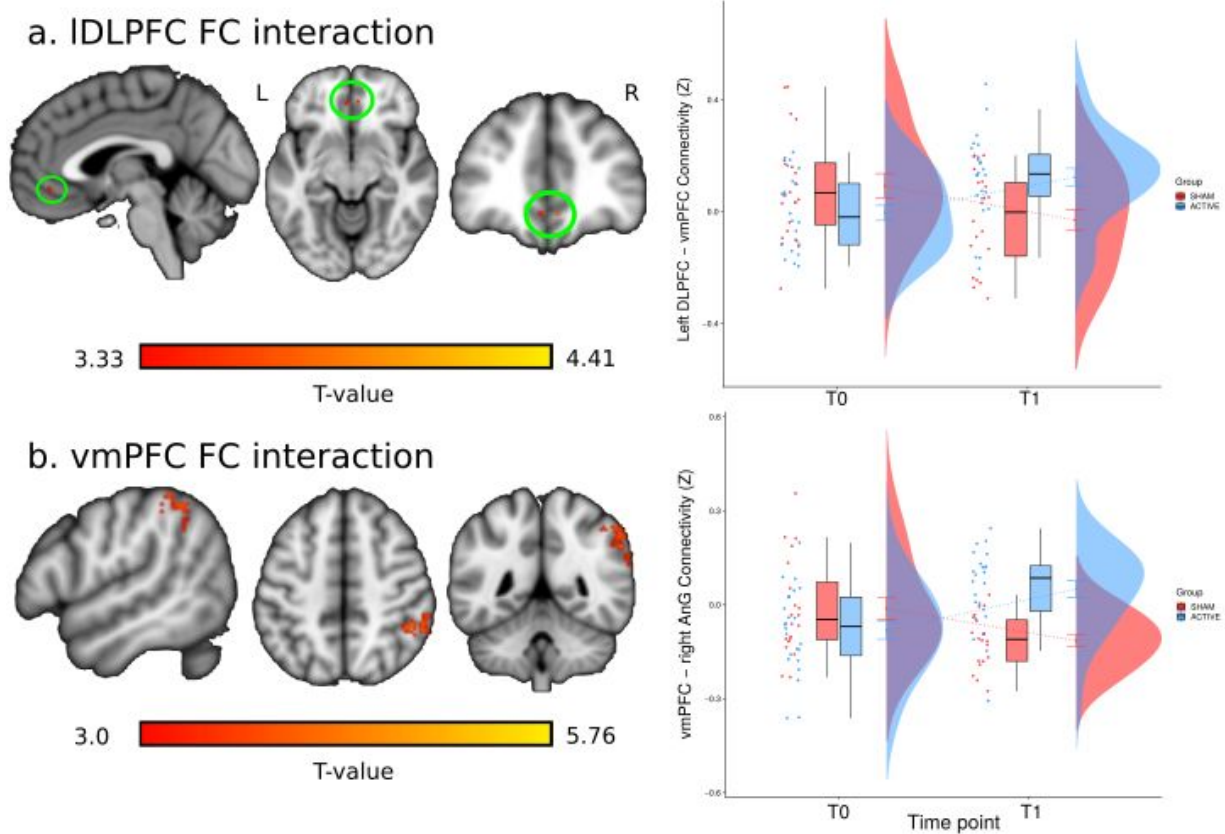
5a). However, it did not correlate significantly with VAS changes ($t=-1.47$, $df=42$, $p=0.15$, $r=-0.22$) nor CCQ-Now changes ($t=-1.05$, $df=42$, $p=0.30$, $r=-0.16$). Post-hoc analysis showed a significant interaction between vmPFC-Right Angular gyrus (rAnG) FC, with higher FC in the Active group vs. Sham at T1 (Fig. 4). Similar to our main result, this cluster correlated only with impulsivity ($t=-2.31$, $df=42$, $p=0.03$, $r=-0.34$) (Fig. 5b). Overall, we found increased FC between the IDLPFC and vmPFC after 2 weeks of rTMS treatment only in the Active group which correlated significantly with decreased impulsivity but not craving.

Table 4. Significant rsfMRI results in the acute double-blind phase.

Seed region	Significant clusters	Cluster size	t-value	Peak coordinates (MNI)		
				x	y	z
Left DLPFC	vmPFC (ROI)	5	3.33	-2.8	41.2	-9.2
	vmPFC (ROI)	2	4.41	6	41	-10
vmPFC	Angular gyrus (WB)	265	3.28	56.3	-45.2	42.3

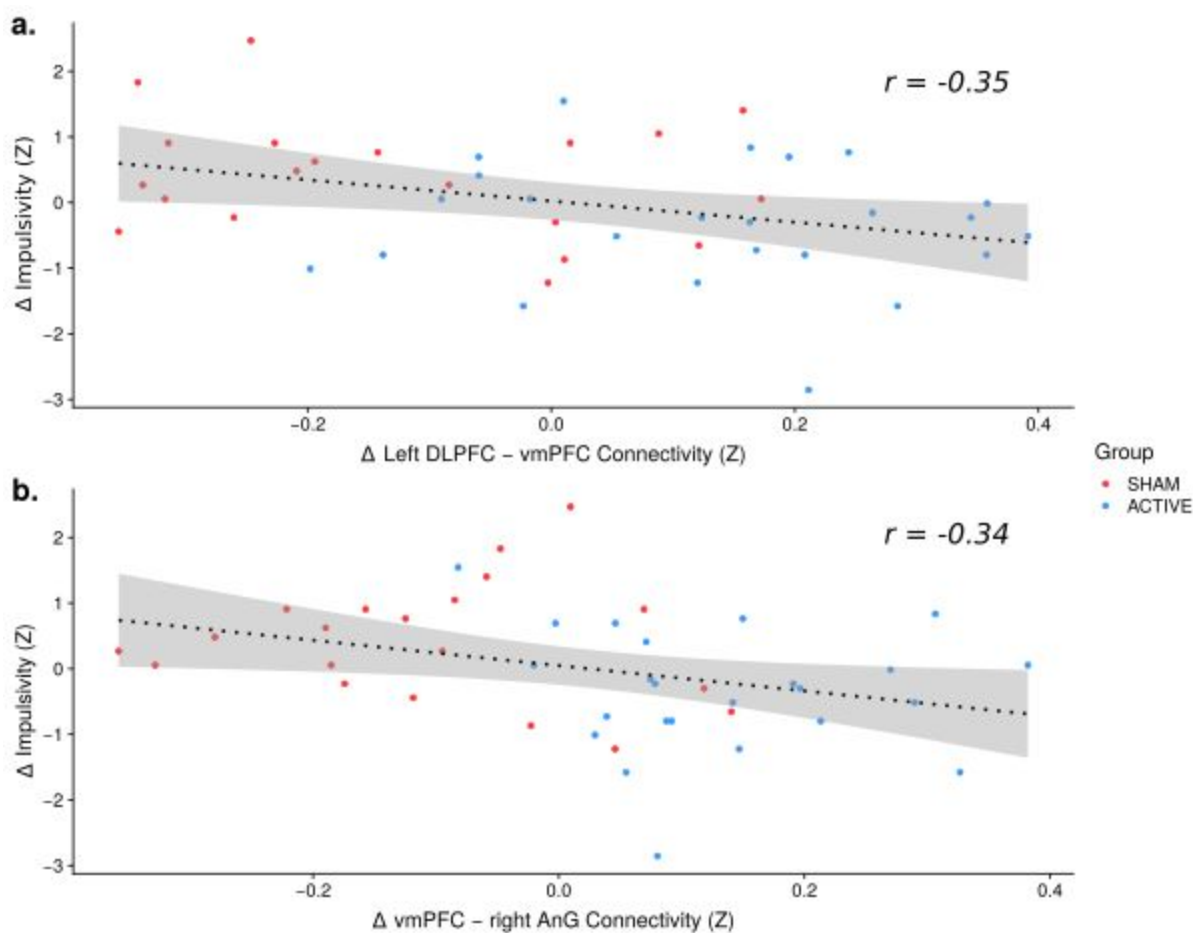
ROI = region of interest, WB = whole brain.

Figure 4. Functional connectivity results of the acute phase.



a. IDLPFC-vmPFC significant interaction cluster; b. vmPFC-rAnG significant interaction cluster; right column shows the raincloud plots at each time point, where each data point represents the cluster's mean Z-value for each subject; IDLPFC = left dorsolateral prefrontal cortex; vmPFC = ventromedial prefrontal cortex; rAnG = right angular gyrus; FC = functional connectivity.

Figure 5. Functional connectivity and impulsivity scatter plots.



Δ = delta (T0-T1) scores; r = Pearson correlation coefficient; DLPFC = dorsolateral prefrontal cortex; vmPFC = ventromedial prefrontal cortex; AnG = angular gyrus; regression line with 95% confidence intervals for both groups together.

Maintenance phase clinical measures

We found significant reduction in both CCQ-Now and VAS craving measures after 6 months of open maintenance rTMS, but no significant effect on urine test results (Table 5 & Figure 6).

Urine tests (n=14) were classified as: 1) Maintained negative (n=8 [53%]), 2) maintained positive (n=3 [10%]), 3) changed from negative to positive (n=1 [6.6%] at 6 months), and 4)

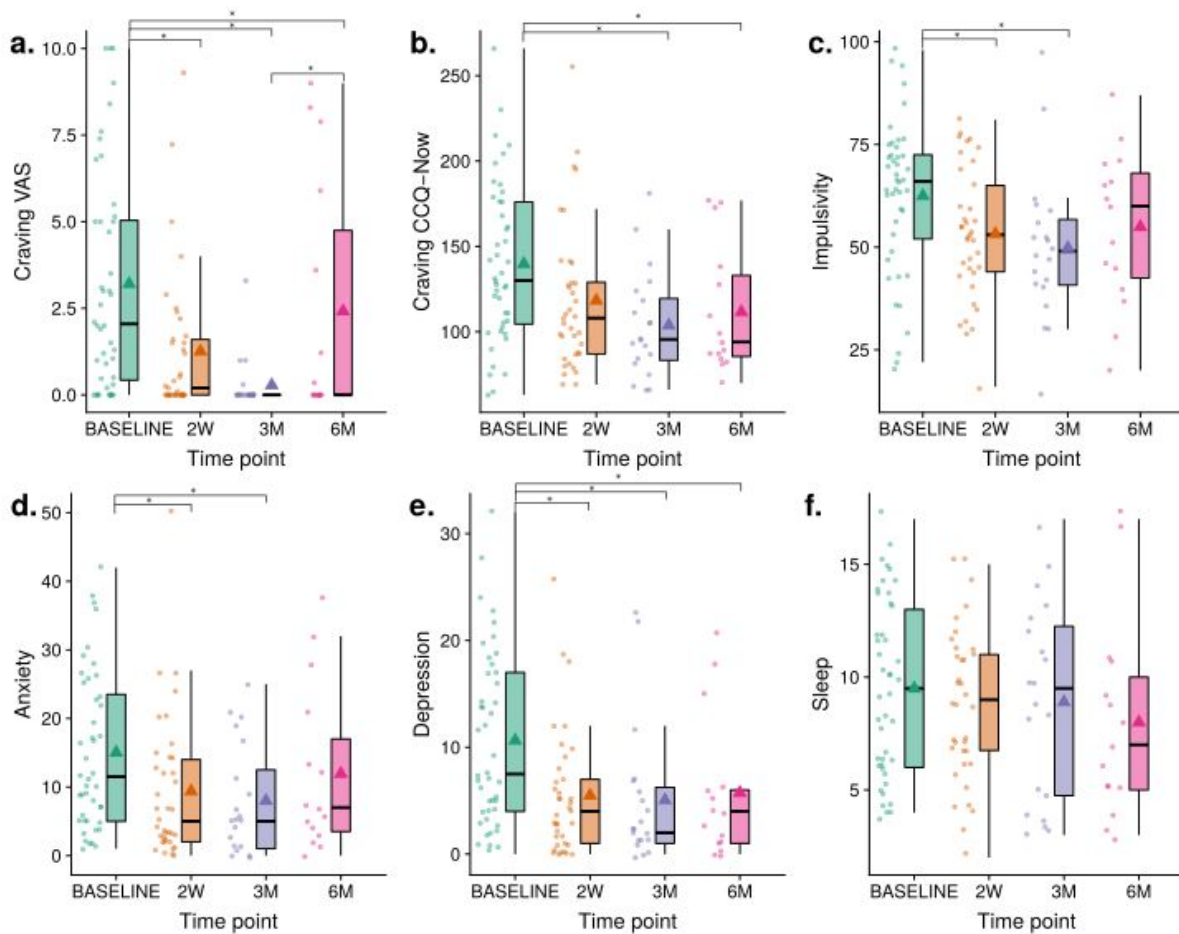
changed from positive to negative ($n=2$ [13.3%] at 2 weeks) (see Tables S9). Post-hoc contrasts showed significant differences in CCQ-Now between BASELINE (T0) and all subsequent time points, but not among any other time points (Table S10). In craving VAS, contrasts showed differences between T0 and 2 WEEKS (T1)/3 MONTHS but not 6 MONTHS, with significant differences also noted between 3 MONTHS and 6 MONTHS. For the secondary outcome measures, we found significant differences in impulsivity, anxiety and depression, but not in sleep. Similarly to VAS, impulsivity, anxiety and depression differed between T0 and T1 and 3 MONTHS but not at 6 MONTHS. For details on statistical results, see Table S10. Figure S5 & Table S12 show similar results for WHODAS and SCL90-R. Finally, the modified Timeline Followback (mTLFB) indicated a significant reduction in frequency of use ($\chi^2(6)=32.92$, $p<0.001$, $W=0.37$) and grams of cocaine used ($\chi^2(6)=36.57$, $p<0.001$, $W=0.41$) (Fig. 7). *Post hoc* contrasts showed that this effect was driven only by higher frequency of use and grams consumed in the month before enrollment (Table S13 and S14).

Table 4. Outcome measures in the maintenance open-label phase.

	Time point				Statistical analysis
	Baseline (N=44)	2 weeks (N=37)	3 months (N=20)	6 months (N=15)	
Primary outcome measures					
Craving: CCQ - Now	139.7 ± 46.9	118.3 ± 42.8	103.8 ± 31.0	111.6 ± 37.5	F (3, 71) = 7.2, p = 0.0002*
Craving: VAS	3.2 ± 3.2	1.3 ± 2.1	0.3 ± 0.8	2.4 ± 3.5	F (3, 76) = 10.47, p < 0.0001*
Urine test: Cocaine					Q = 2, p = 0.5
- positive	5 (33.3%)	3 (20.0%)	4 (28.6%)	4 (28.6%)	
- negative	10 (66.7%)	12 (80.0%)	10 (71.4%)	10 (71.4%)	
Secondary outcome measures					
Impulsivity: BIS11 - Total	62.5 ± 19.0	53.2 ± 16.1	49.8 ± 18.2	54.9 ± 18.8	F (3, 74) = 6.84, p = 0.004*, q = 0.002
BIS11 - Cognitive	18.2 ± 6.3	14.7 ± 5.3	15.2 ± 6.1	15.8 ± 4.7	-
BIS11 - Motor	20.0 ± 8.0	16.4 ± 6.7	15.1 ± 6.9	17.7 ± 8.1	-
BIS11 - Non-Planned	24.3 ± 8.4	22.2 ± 6.7	19.6 ± 8.6	21.5 ± 8.2	-
Anxiety: HARS score	15.0 ± 11.4	9.4 ± 10.4	8.0 ± 8.0	11.9 ± 12.1	F (3, 73) = 4.47, p = 0.006*, q = 0.008
HARS categories					-
- mild severity	29 (65.9%)	31 (83.8%)	16 (80.0%)	11 (73.3%)	
- mild to moderate severity	4 (9.1%)	3 (8.1%)	3 (15.0%)	1 (6.7%)	
- moderate-severe	11 (25.0%)	3 (8.1%)	1 (5.0%)	3 (20.0%)	
Depression: HDRS score	10.6 ± 8.2	5.5 ± 5.9	5.0 ± 6.7	5.7 ± 6.8	F (3, 76) = 6.10, p = 0.0009*, q = 0.002
HDRS categories					-
- normal	22 (50.0%)	28 (75.7%)	17 (85.0%)	12 (80.0%)	
- minor depression	4 (9.1%)	6 (16.2%)	1 (5.0%)	0 (0.0%)	
- less than major depressive	8 (18.2%)	0 (0.0%)	0 (0.0%)	1 (6.7%)	
- major depression	9 (20.5%)	3 (8.1%)	2 (10.0%)	2 (13.3%)	
- more than major depression	1 (2.3%)	0 (0.0%)	0 (0.0%)	0 (0.0%)	
Sleep: PSQI total score	9.5 ± 3.9	8.8 ± 3.4	8.9 ± 4.4	8.0 ± 4.5	F (3, 82) = 1.27, p = 0.29
Global quality of sleep					-
- Good	8 (18.2%)	6 (16.7%)	7 (35.0%)	6 (40.0%)	
- Bad	36 (81.8%)	30 (83.3%)	13 (65.0%)	9 (60.0%)	

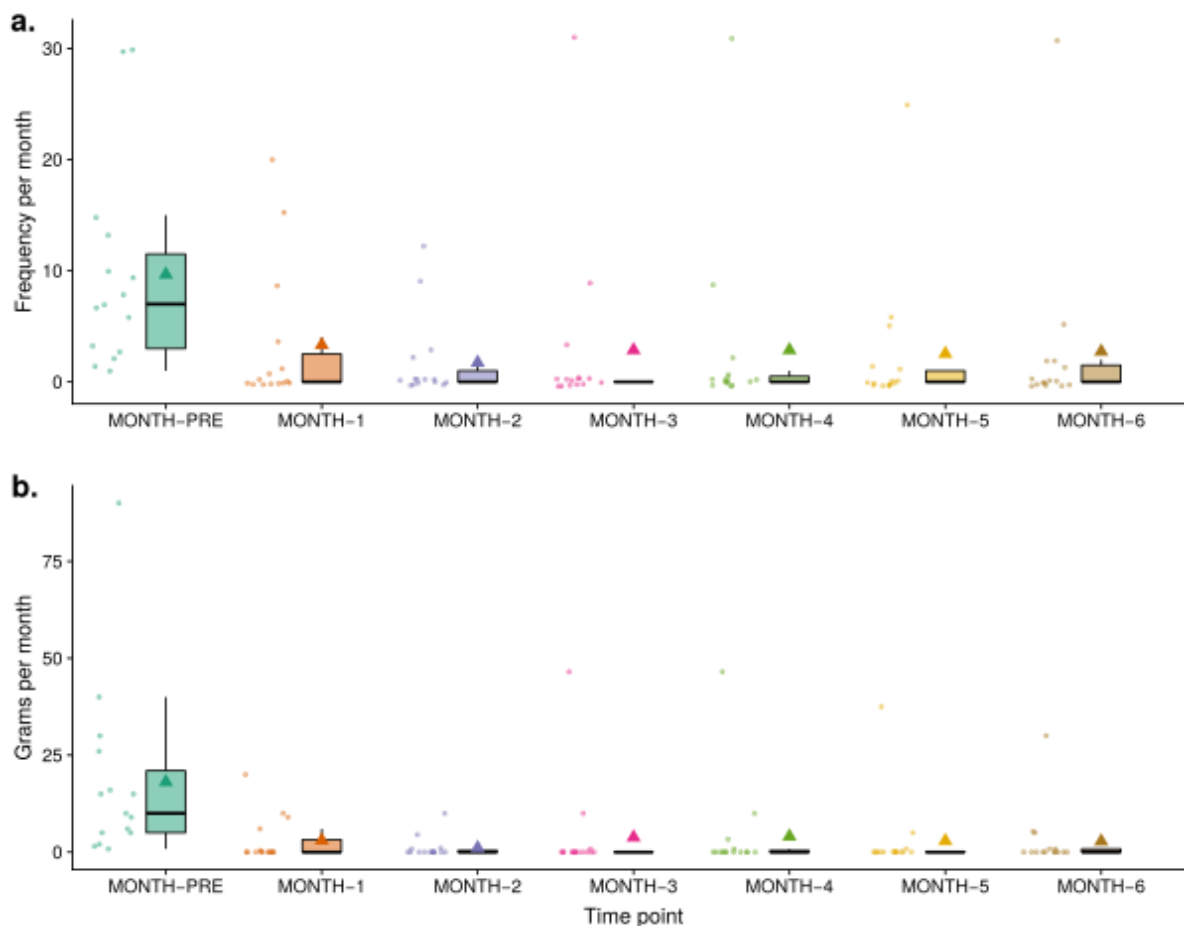
BIS 11 = Barrat Impulsiveness Scale, CCQ = Cocaine Craving Questionnaire, VAS = Visual analog scale, HARS = Hamilton Anxiety Rating Scale, HDRS = Hamilton Depression Rating Scale, PSQI = Pittsburgh Sleep Quality Index, t = t-value, p = p-value, * = statistically significant, q = FDR adjusted p-value, Q = Cochran's Q Test. Urine test: cocaine has an n = 15 for the first two timepoints, then 14 for the last two timepoints.

Figure 6. Plots of the outcome measures for the open-label maintenance phase.



2W = 2 weeks, 3M = 3 months, 6M = 6 months; Points to the left of each time point are the individual measures; boxplots show medians with whiskers and no outliers; ▲ = mean; * = significant post-hoc comparison with Tukey correction.

Figure 7. Modified Timeline Followback plots.

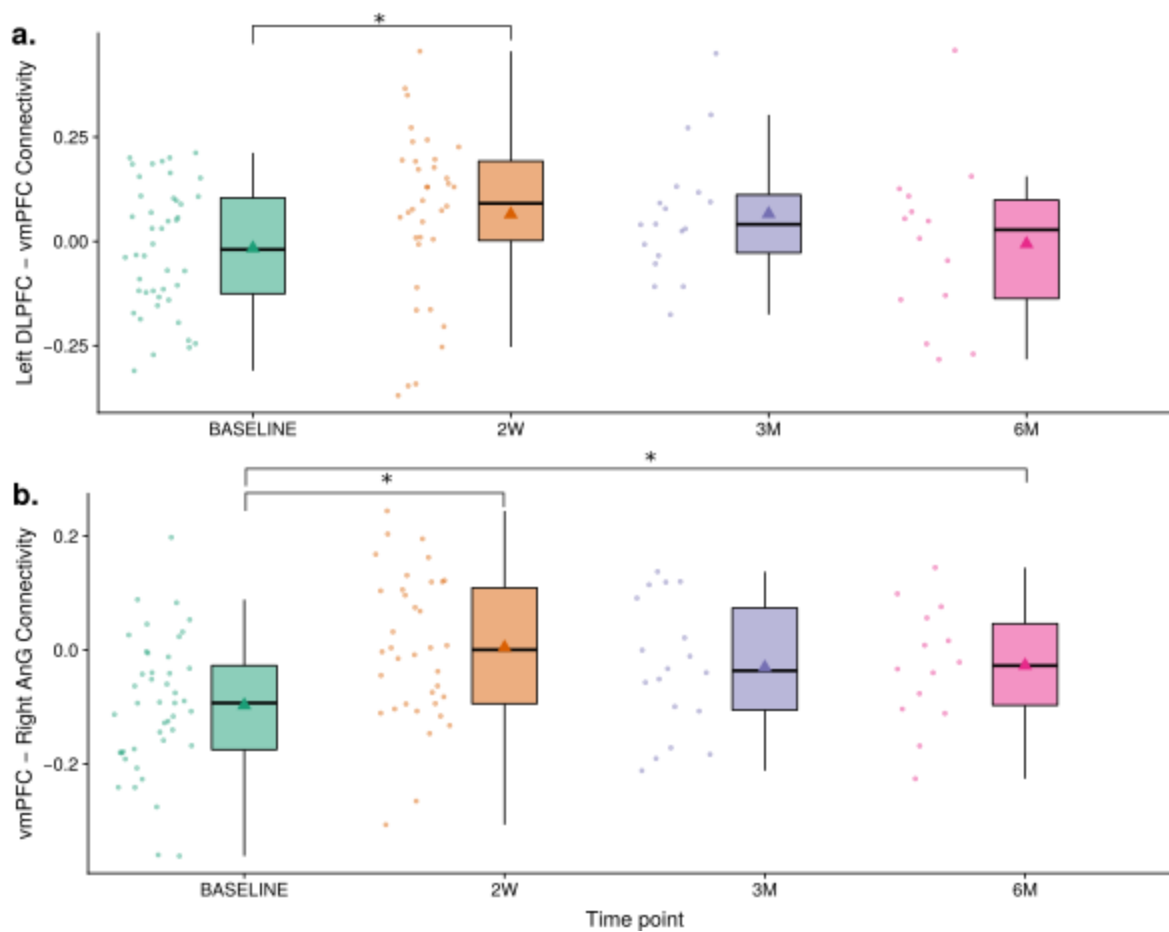


MONTH-PRE = Previous month before the study started.

Maintenance phase functional connectivity

Mean FC of the IDLPFC-vmPFC cluster identified in the acute phase did not differ significantly over time ($F(3, 79)=2.48, p=0.07$); planned post-hoc analysis showed only the T0 vs. T1 contrast differed significantly ($t=2.464, p=0.016$). Mean FC of the vmPFC-rAnG cluster found in the acute phase differed significantly across time ($F(3,72)=8.83, p<0.001$); post-hoc analysis showed differences between T0 and T1 ($t=5.12, p<0.001$) and between T0 and 6 MONTHS ($t=2.07, p=0.04$) although the difference between T0 and 3 MONTHS did not reach significance ($t=1.74, p=0.08$) (Fig. 8).

Figure 8. Functional connectivity in the open-label maintenance phase per cluster.



2W = 2 weeks, 3M = 3 months, 6M = 6 months; Points to the left of each time point are the individual measures; boxplots show medians with whiskers and no outliers; ▲ = mean; * = significant post-hoc comparison with Tukey correction; DLPFC = dorsolateral prefrontal cortex; vmPFC = ventromedial prefrontal cortex; AnG = angular gyrus.

Discussion

Using a double-blind RCT, we found that 10 sessions of active rTMS over 2 weeks significantly reduced craving and impulsivity compared to sham, with the effect maintained during the open-label maintenance phase for 3 months. Effects did not remain statistically significant at 6 months, potentially because of decreased sample size/attrition. Other clinical symptoms, including anxiety and depression, improved similarly in both Active and Sham groups after 2 weeks, and were maintained for 3 months, returning to baseline at 6 months. Binary urine tests revealed no significant changes in cocaine use with treatment. Self-report on the modified Timeline Followback Method Assessment (mTLFB) showed lower frequency of cocaine use and grams used per month for 6 months.

Functional connectivity (FC) analysis revealed that FC between left dorsolateral prefrontal cortex (IDL PFC) and ventromedial prefrontal cortex (vmPFC) increased in the Active rTMS group after 2 weeks, but the difference was not sustained during the lower intensity, open maintenance phase. IDL PFC-vmPFC FC correlated with impulsivity but not with craving. Additionally, FC between vmPFC and right angular gyrus, which was also correlated with impulsivity, significantly increased after 2 weeks of active rTMS, with the effect largely sustained up to 6 months.

Overall, we found that: 1) 10 sessions of double-blind 5-Hz rTMS over two weeks had a greater effect on craving and impulsivity than placebo in CUD; 2) possible mechanisms for clinical improvement seem to be regulation of the executive control network and the default mode network, with the effect related to impulsivity rather than craving; 3) clinical effects on anxiety, depression and sleep quality were nonspecific to rTMS; and 4) the effectiveness of twice-a-week maintenance rTMS seemed to dissipate by 6 months. A strength of our study is the double-blind RCT design for the first 2 weeks of intensive treatment, which revealed clear

acute effects on craving and impulsivity of 5-Hz rTMS on the IDLPFC. These effects suggest that this scheme could be useful as an acute or rescue treatment for CUD as an adjunct to standard treatments. Further research is warranted to determine how to best extend long term effects and to explore interactions with concomitant pharmacological and behavioral therapies. We now discuss our results and study limitations.

Acute phase outcomes

Craving and impulsivity are subjective clinical symptoms that are commonly altered in CUD and are related to brain FC patterns (22,23). Craving and impulsivity were reduced in our CUD patients after receiving Active rTMS compared to Sham. Previous studies on excitatory rTMS in CUD have found decreased craving (5,6,8,10); similar results have been reported for alcohol, nicotine, methamphetamines and heroin (24–28). Impulsivity is a multidimensional construct that is a marker of severity and a possible marker of treatment success in SUDs (29). However, the only two prior studies on rTMS in SUDs that examined impulsivity did not find benefits (30,31). Hanlon et al. (14) suggested that IDLPFC stimulation in CUD would result in decreased impulsiveness in accordance with the competing neurobehavioral decision system (CNDS) model (16), by exciting the executive control network. The CNDS model also helps to explain reduced craving, whereby limbic system hyperactivity in CUD would be inhibited by increasing executive control network (ECN) activity, which is pathologically depressed in CUD. Overall, rTMS seems to reduce craving and impulsivity by directly involving the ECN and the limbic system indirectly. By contrast, we did not find any differences in urine tests results, perhaps because of floor effects in treatment-seeking patients. Reduction or elimination of substance consumption is the ultimate goal for any SUD treatment. Nevertheless, reducing craving,

impulsivity and other clinical comorbidities, as well as increasing quality of life, are also important in the treatment of addiction (32).

Contrary to our hypotheses, rTMS did not have greater benefits over standard treatment in anxiety, depression or sleep quality, as we found similar reduction in both Active and Sham groups after 2 weeks. Sleep quality in CUD patients was found to improve after rTMS therapy (33). We also found improvements, but they were present in both groups, highlighting the importance of double-blind RCTs (33). Although the IDLPFC is the main cortical target used in major depression, its clinical benefit is usually seen in patients resistant to pharmacological treatment (34). Our results suggest that rTMS conveys little to no beneficial effects beyond standard treatment for depressive symptoms in the absence of major depression (35,36). Similarly, studies in generalized anxiety disorder have shown clinical improvement in sham-controlled rTMS studies with right DLPFC inhibition (1-Hz) (37,38), but we again did not find benefit over standard treatment. The benefit of rTMS may only apply to severe disorders and not to isolated mild-symptoms.

We found that IDLPFC-vmPFC FC increased following 2 weeks of rTMS treatment only in the Active group, and this FC change was significantly correlated with impulsivity changes but not with craving. Previous studies have suggested the ECN, in which the DLPFC plays an important role, is functionally depressed in CUD, possibly explaining the highly associated impulsivity. These studies also suggest excitatory rTMS could reduce impulsivity by enhancing ECN function, while inhibitory rTMS to the vmPFC should decrease limbic circuit arousal, reducing craving (14,16). This hypothesis is in line with our findings as, although we observed decreased craving and impulsivity with treatment, only impulsivity was significantly correlated with the

change in IDLPFC-vmPFC FC. The relationship between these two regions seems to be important in CUD pathology and treatment response. An fMRI study using single-pulse TMS delivered to IDLPFC showed that stimulation decreased vmPFC activity in controls but not in cocaine users (10). Therefore, excitatory rTMS to the IDLPFC in CUD may functionally “correct” the IDLPFC-vmPFC circuit. Excitatory rTMS over the IDLPFC was found to increase low-frequency power of the BOLD signal in the vmPFC in healthy controls (39), and repeated stimulation may increase BOLD signal correlation between these two regions, as we found. The increased IDLPFC-vmPFC FC after 2 weeks of rTMS may be related to glutamatergic (Glut) activity. GABA dysregulation in the vmPFC appears to be related to cocaine seeking behavior (40); increased GABA within vmPFC increases pathological limbic system activity by local inhibition (41,42). Stimulating the altered IDLPFC circuit may result in local vmPFC increase of Glut activity (increased BOLD signal), counteracting GABA inhibition. However, this is speculative in the absence of spectroscopic examination; further, increased IDLPFC-vmPFC FC was not sustained long-term during maintenance dose (twice a week) rTMS.

Exploratory, we also found that vmPFC-rAnG FC increased in the Active rTMS group after 2 weeks, and this effect was also correlated only with impulsivity. The vmPFC and the AnG are both part of the default-mode network (DMN) (43,44). The vmPFC is part of the DMN medial temporal subsystem while the AnG is part of the DMN core, considered a cross-modal hub for information flow between subsystems, and involved in representing personally important information (45). High AnG BOLD activation and concomitant low-levels of BOLD activation in the vmPFC during a go-nogo response inhibition task predicted high levels of substance use and symptoms of dependency in adolescents (46). Furthermore, the AnG has been correlated with craving scores in gaming and internet addiction (47–49). The involvement of the AnG may

also be in line with a preprint (50) that found that multi-day rTMS treatment increased FC across distinct non-targeted networks while it decreased FC within targeted networks (51). Hence, rTMS stimulation of a given region has been hypothesized to induce compensatory network changes in global brain organization to maintain homeostasis (51). Thus, our results suggest the DMN, with possible top-down involvement of the AnG, may also be involved in SUDs, in addition to the 'usual suspects' in addiction (52).

Maintenance phase outcomes

The positive clinical effect of rTMS seemed to decay over 6 months despite twice/week rTMS maintenance treatment. We observed this in both primary and secondary outcome measures, except for sleep quality where there was no effect, as well as IDLPFC-vmPFC FC and other clinical measures (Supplementary Materials). By contrast, vmPFC-IAnG FC increased significantly at 2 weeks and was still elevated at 6 months. Our mTLFB assessment, which has been found to be reliable (53), showed significant reduction of monthly frequency of use and grams of cocaine used from the month prior to enrollment, though this monthly measure could only be obtained in the open-label maintenance phase due to the brevity of the acute phase. We lacked resources to study daily cocaine consumption, which remains an important goal for future work.

In general, the clinical outcome of rTMS has been linked to three combined elements: 1) dosage, 2) frequency, and 3) specific region of stimulation. The number of rTMS pulses (dosage) may be related to the decay we observed, as they decreased from 25,000 pulses per week during the acute phase to 10,000 pulses per week in the maintenance phase. However, the number of pulses may not be related to clinical outcome, at least in depression (54) as there may be a ceiling effect for cortical excitability (55). Another factor may be our use of 5-Hz rTMS,

which is in the low-end of excitatory frequencies, instead of 10-20 Hz, at the higher-end. However, 5- and 10-Hz produced similar clinical outcomes in major depression and Alzheimer's disease (56,57). In non-human primates, 5-Hz was preferred for causally influencing the motor network (58). In terms of the specific cortical target region, variation on the target within the IDLPFC is known to change clinical outcome in depression, due to its relationship with subgenual connectivity (17,18). This has not been examined for SUDs. The DLPFC is a highly heterogeneous and functionally segmented area (59), for which both the 5.5 cm and the Beam F3 methods are prone to error (60). Neuronavigation using individual FC is considered optimal for target specificity (61), however, its high cost makes it infeasible in many general clinical environments, especially in developing countries. Another explanation for variability in treatment outcome may relate to cortical pathology, as cortical excitability of frontal regions in neuromodulation relies on the microstructural and neurochemical integrity of the cortical layers (62,63), which are altered in CUD (64–66). Finally, the lack of long-term maintenance may reflect patient-level factors in CUD patients, such as their exposure to consumption triggers and other general treatment-related factors that need to be investigated further (2,3). Treatment for SUDs is complex and any single strategy is unlikely to be sufficient to reduce consumption. Multiple therapeutic strategies may facilitate a reduction in cocaine consumption and other symptoms (3). Nevertheless, here we show evidence for the benefit of rTMS to reduce craving, impulsivity and self-reported frequency and quantity of cocaine use.

Limitations

Full limitations are available in Supplementary materials. Briefly, study limitations include substantial dropout, which is common in the treatment of SUDs. A 12-month treatment study found an overall dropout rate of 31%, varying between 15 and 56% across subgroups (67); the

same group also found 30% dropout in CUD psychological treatment (68). A 69% dropout rate for a 4-week treatment has also been reported in CUD (69). Attrition in our study was: 1) 17% at 2 weeks; 2) 63% at 3 months; and 3) 72% at 6 months. The most common reasons were “poor adherence to treatment” followed by “incompatibility with working hours.” Overall, rTMS as an add-on treatment did not improve adherence beyond standard treatment. Motivation to remain in treatment should be measured in future studies to improve dropout rates. Moreover, all our CUD patients had to follow standard treatment, consisting of group psychotherapy, individual psychotherapy and pharmacotherapy. Several of our patients received pharmacotherapy concurrently with starting rTMS treatment but we did not find any differential effects of pharmacotherapies between active and sham groups. Our double-blind acute phase arm was limited to 2 weeks for ethical reasons, so as not to overextend placebo treatment for a vulnerable population. Nevertheless, that time window seemed sufficient to detect positive clinical effects. Future studies may benefit from using objective measures such as cue-reactivity (4). Finally, we cannot report on the effects of rTMS as a monotherapy for CUD. The overall goal of our study was to assess rTMS as an add-on therapy to the standard combination of CUD treatment as this is what clinicians encounter in their daily work. Despite these limitations, we were able to find a positive add-on effect of rTMS in the first 2 weeks and a possible maintenance effect, despite substantial attrition.

Conclusions

In a double-blind RCT, we found that 5-Hz rTMS in cocaine addiction reduced clinical symptoms, which correlated with improvement on functional connectivity in the executive control and default mode networks. The positive clinical and connectivity effects were higher in the acute, 2 week phase, and the maintenance effect (lower frequency of stimulation sessions)

seemed to diminish after 3 months even with continued weekly therapy. Standard treatment plus rTMS maintained a lower frequency of use and cocaine dosage than pre-baseline for 6 months during treatment, without concerns regarding the safety of rTMS. We conclude that rTMS therapy in cocaine addiction is a promising adjunctive treatment that may benefit treatment-seeking patients and that DLPFC-vmPFC and vmPFC-AnG are candidate circuit-based markers of clinical target engagement.

Acknowledgments

We would like to thank Alejandra Torres, Daniela Guerrero León, Ernesto Reyes Zamorano, Eden Sanchez Rosas, Hugo García Cantú and Isabel Espinoza Luna for their assistance in conducting the clinical trial. Major thanks to Michael D. Fox and Molly Schineller for providing the normative connectivity maps from fucidals. We also thank the Laboratorio Nacional de Visualización Científica Avanzada (LAVIS) for the use of their computer cluster and the Laboratorio Nacional de Imagenología por Resonancia Magnética (LANIREM). This study was supported by public funds CONACYT FOSISS No. 0260971 and CONACYT No. 253072. Student scholarships were provided by CONACYT for: Sofia Fernandez-Lozano No. 476284, Alan Dávalos No.581492 and Erik Morelos-Santana No. 479345.

Disclosures

The authors report no disclosures nor conflicts of interest. Data and code will be openly available soon on OpenNeuro, Neurovault and Zenodo.

References

1. Fryer RG JR, Heaton PS, Levitt SD, Murphy KM (2013): Measuring crack cocaine and its impact. *Econ Inq* 51: 1651–1681.
2. Gorelick DA (2015): Treatment of Cocaine Addiction. *Textbook of Addiction Treatment: International Perspectives*. pp 381–404.
3. Kampman KM (2019): The treatment of cocaine use disorder. *Sci Adv* 5: eaax1532.
4. Ekhtiari H, Tavakoli H, Addolorato G, Baeken C, Bonci A, Campanella S, *et al.* (2019): Transcranial electrical and magnetic stimulation (tES and TMS) for addiction medicine: A consensus paper on the present state of the science and the road ahead. *Neurosci Biobehav Rev* 104: 118–140.
5. Camprodon JA, Martínez-Raga J, Alonso-Alonso M, Shih M-C, Pascual-Leone A (2007): One session of high frequency repetitive transcranial magnetic stimulation (rTMS) to the right prefrontal cortex transiently reduces cocaine craving. *Drug Alcohol Depend* 86: 91–94.
6. Politi E, Fauci E, Santoro A, Smeraldi E (2008): Daily sessions of transcranial magnetic stimulation to the left prefrontal cortex gradually reduce cocaine craving. *Am J Addict* 17: 345–346.
7. Terraneo A, Leggio L, Saladini M, Ermani M, Bonci A, Gallimberti L (2016): Transcranial magnetic stimulation of dorsolateral prefrontal cortex reduces cocaine use: A pilot study. *Eur Neuropsychopharmacol* 26: 37–44.
8. Rapinesi C, Del Casale A, Di Pietro S, Ferri VR, Piacentino D, Sani G, *et al.* (2016): Add-on high frequency deep transcranial magnetic stimulation (dTMS) to bilateral prefrontal cortex reduces cocaine craving in patients with cocaine use disorder. *Neurosci Lett* 629: 43–47.
9. Bolloni C, Panella R, Pedetti M, Frascella AG, Gambelunghe C, Piccoli T, *et al.* (2016): Bilateral Transcranial Magnetic Stimulation of the Prefrontal Cortex Reduces Cocaine

- Intake: A Pilot Study. *Front Psychiatry* 7: 133.
10. Hanlon CA, Dowdle LT, Moss H, Canterbury M, George MS (2016): Mobilization of Medial and Lateral Frontal-Striatal Circuits in Cocaine Users and Controls: An Interleaved TMS/BOLD Functional Connectivity Study. *Neuropsychopharmacology* 41: 3032–3041.
 11. Kearney-Ramos TE, Dowdle LT, Lench DH, Mithoefer OJ, Devries WH, George MS, *et al.* (2018): Transdiagnostic Effects of Ventromedial Prefrontal Cortex Transcranial Magnetic Stimulation on Cue Reactivity. *Biol Psychiatry Cogn Neurosci Neuroimaging* 3: 599–609.
 12. Chen BT, Yau H-J, Hatch C, Kusumoto-Yoshida I, Cho SL, Hopf FW, Bonci A (2013): Rescuing cocaine-induced prefrontal cortex hypoactivity prevents compulsive cocaine seeking. *Nature* 496: 359–362.
 13. Diana M, Raji T, Melis M, Nummenmaa A, Leggio L, Bonci A (2017): Rehabilitating the addicted brain with transcranial magnetic stimulation. *Nat Rev Neurosci* 18: 685–693.
 14. Hanlon CA, Dowdle LT, Henderson JS (2018): Modulating Neural Circuits with Transcranial Magnetic Stimulation: Implications for Addiction Treatment Development ((M. A. Nader, editor)). *Pharmacol Rev* 70: 661–683.
 15. Chai XJ, Castañón AN, Ongür D, Whitfield-Gabrieli S (2012): Anticorrelations in resting state networks without global signal regression. *Neuroimage* 59: 1420–1428.
 16. Bickel WK, Snider SE, Quisenberry AJ, Stein JS, Hanlon CA (2016): Competing neurobehavioral decision systems theory of cocaine addiction: From mechanisms to therapeutic opportunities. *Prog Brain Res* 223: 269–293.
 17. Weigand A, Horn A, Caballero R, Cooke D, Stern AP, Taylor SF, *et al.* (2018): Prospective Validation That Subgenual Connectivity Predicts Antidepressant Efficacy of Transcranial Magnetic Stimulation Sites. *Biol Psychiatry* 84: 28–37.
 18. Cash RFH, Zalesky A, Thomson RH, Tian Y, Cocchi L, Fitzgerald PB (2019): Subgenual

Functional Connectivity Predicts Antidepressant Treatment Response to Transcranial Magnetic Stimulation: Independent Validation and Evaluation of Personalization. *Biol Psychiatry* 86: e5–e7.

19. Esteban O, Birman D, Schaer M, Koyejo OO, Poldrack RA, Gorgolewski KJ (2017): MRIQC: Advancing the automatic prediction of image quality in MRI from unseen sites. *PLoS One* 12: e0184661.
20. Ciric R, Rosen AFG, Erus G, Cieslak M, Adebimpe A, Cook PA, *et al.* (12/2018): Mitigating head motion artifact in functional connectivity MRI. *Nat Protoc* 13: 2801–2826.
21. Power JD, Mitra A, Laumann TO, Snyder AZ, Schlaggar BL, Petersen SE (2014): Methods to detect, characterize, and remove motion artifact in resting state fMRI. *Neuroimage* 84: 320–341.
22. Hu Y, Salmeron BJ, Gu H, Stein EA, Yang Y (2015): Impaired Functional Connectivity Within and Between Frontostriatal Circuits and Its Association With Compulsive Drug Use and Trait Impulsivity in Cocaine Addiction. *JAMA Psychiatry* 72: 584.
23. Geng X, Hu Y, Gu H, Salmeron BJ, Adinoff B, Stein EA, Yang Y (2017): Salience and default mode network dysregulation in chronic cocaine users predict treatment outcome. *Brain* 140: 1513–1524.
24. Ceccanti M, Inghilleri M, Attilia ML, Racciah R, Fiore M, Zangen A, Ceccanti M (2015): Deep TMS on alcoholics: effects on cortisolemia and dopamine pathway modulation. A pilot study. *Can J Physiol Pharmacol* 93: 283–290.
25. Dinur-Klein L, Dannon P, Hadar A, Rosenberg O, Roth Y, Kotler M, Zangen A (2014): Smoking Cessation Induced by Deep Repetitive Transcranial Magnetic Stimulation of the Prefrontal and Insular Cortices: A Prospective, Randomized Controlled Trial. *Biol Psychiatry* 76: 742–749.

26. Liu T, Li Y, Shen Y, Liu X, Yuan T-F (2019): Gender does not matter: Add-on repetitive transcranial magnetic stimulation treatment for female methamphetamine dependents. *Prog Neuropsychopharmacol Biol Psychiatry* 92: 70–75.
27. Shen Y, Cao X, Tan T, Shan C, Wang Y, Pan J, *et al.* (08/2016): 10-Hz Repetitive Transcranial Magnetic Stimulation of the Left Dorsolateral Prefrontal Cortex Reduces Heroin Cue Craving in Long-Term Addicts. *Biol Psychiatry* 80: e13–e14.
28. Pedersen E, Koo M (2019): The Treatment of Addiction by Repetitive Transcranial Magnetic Stimulation (rTMS): Current Data and Future Recommendations. *EC Psychology and Psychiatry* 8: 1136–1145.
29. Vassileva J, Conrod PJ (2019): Impulsivities and addictions: a multidimensional integrative framework informing assessment and interventions for substance use disorders. *Philos Trans R Soc Lond B Biol Sci* 374: 20180137.
30. Zack M, Cho SS, Parlee J, Jacobs M, Li C, Boileau I, Strafella A (2016): Effects of High Frequency Repeated Transcranial Magnetic Stimulation and Continuous Theta Burst Stimulation on Gambling Reinforcement, Delay Discounting, and Stroop Interference in Men with Pathological Gambling. *Brain Stimul* 9: 867–875.
31. Sheffer CE, Bickel WK, Brandon TH, Franck CT, Deen D, Panissidi L, *et al.* (2018): Preventing relapse to smoking with transcranial magnetic stimulation: Feasibility and potential efficacy. *Drug Alcohol Depend* 182: 8–18.
32. Narvaez JCM, Jansen K, Pinheiro RT, Kapczinski F, Silva RA, Pechansky F, Magalhães PV (2014): Psychiatric and substance-use comorbidities associated with lifetime crack cocaine use in young adults in the general population. *Compr Psychiatry* 55: 1369–1376.
33. Gómez Pérez LJ, Cardullo S, Cellini N, Sarlo M, Monteanni T, Bonci A, *et al.* (2020): Sleep quality improves during treatment with repetitive transcranial magnetic stimulation (rTMS) in

- patients with cocaine use disorder: a retrospective observational study. *BMC Psychiatry* 20: 153.
34. Lefaucheur J-P, Aleman A, Baeken C, Benninger DH, Brunelin J, Di Lazzaro V, *et al.* (2020): Evidence-based guidelines on the therapeutic use of repetitive transcranial magnetic stimulation (rTMS): An update (2014-2018). *Clin Neurophysiol* 131: 474–528.
 35. Kamolz S, Richter MM, Schmidtke A, Fallgatter AJ (2008): [Transcranial magnetic stimulation for comorbid depression in anorexia]. *Nervenarzt* 79: 1071–1073.
 36. Hai-jiao W, Ge T, Li-na Z, Deng C, Da X, Shan-Shan C, Liu L (2020): The efficacy of repetitive transcranial magnetic stimulation for Parkinson disease patients with depression. *Int J Neurosci* 130: 19–27.
 37. Bystritsky A, Kaplan JT, Feusner JD, Kerwin LE, Wadekar M, Burock M, *et al.* (2008): A preliminary study of fMRI-guided rTMS in the treatment of generalized anxiety disorder. *J Clin Psychiatry* 69: 1092–1098.
 38. Diefenbach GJ, Bragdon LB, Zertuche L, Hyatt CJ, Hallion LS, Tolin DF, *et al.* (2016): Repetitive transcranial magnetic stimulation for generalised anxiety disorder: a pilot randomised, double-blind, sham-controlled trial. *Br J Psychiatry* 209: 222–228.
 39. Xue S-W, Guo Y, Peng W, Zhang J, Chang D, Zang Y-F, Wang Z (2017): Increased Low-Frequency Resting-State Brain Activity by High-Frequency Repetitive TMS on the Left Dorsolateral Prefrontal Cortex. *Front Psychol* 8: 2266.
 40. Peters J, LaLumiere RT, Kalivas PW (2008): Infralimbic prefrontal cortex is responsible for inhibiting cocaine seeking in extinguished rats. *J Neurosci* 28: 6046–6053.
 41. Jocham G, Hunt LT, Near J, Behrens TEJ (2012): A mechanism for value-guided choice based on the excitation-inhibition balance in prefrontal cortex. *Nat Neurosci* 15: 960–961.
 42. Delli Pizzi S, Padulo C, Brancucci A, Bubbico G, Edden RA, Ferretti A, *et al.* (2016): GABA

- content within the ventromedial prefrontal cortex is related to trait anxiety. *Soc Cogn Affect Neurosci* 11: 758–766.
43. Raichle ME, MacLeod AM, Snyder AZ, Powers WJ, Gusnard DA, Shulman GL (2001): A default mode of brain function. *Proceedings of the National Academy of Sciences* 98: 676–682.
44. Greicius MD, Supekar K, Menon V, Dougherty RF (2009): Resting-State Functional Connectivity Reflects Structural Connectivity in the Default Mode Network. *Cereb Cortex* 19: 72–78.
45. Andrews-Hanna JR, Smallwood J, Spreng RN (2014): The default network and self-generated thought: component processes, dynamic control, and clinical relevance. *Ann N Y Acad Sci* 1316: 29–52.
46. Mahmood OM, Goldenberg D, Thayer R, Migliorini R, Simmons AN, Tapert SF (2013): Adolescents' fMRI activation to a response inhibition task predicts future substance use. *Addict Behav* 38: 1435–1441.
47. Sun Y, Ying H, Seetohul RM, Xuemei W, Ya Z, Qian L, *et al.* (2012): Brain fMRI study of crave induced by cue pictures in online game addicts (male adolescents). *Behav Brain Res* 233: 563–576.
48. Leménager T, Dieter J, Hill H, Koopmann A, Reinhard I, Sell M, *et al.* (2014): Neurobiological correlates of physical self-concept and self-identification with avatars in addicted players of Massively Multiplayer Online Role-Playing Games (MMORPGs). *Addict Behav* 39: 1789–1797.
49. Dieter J, Hill H, Sell M, Reinhard I, Vollstädt-Klein S, Kiefer F, *et al.* (2015): Avatar's neurobiological traces in the self-concept of massively multiplayer online role-playing game (MMORPG) addicts. *Behav Neurosci* 129: 8–17.

50. Hendrikse J, Coxon J, Thompson S, Suo C, Fornito A, Yücel M, Rogasch NC (2020, April 25): Multi-day rTMS exerts site-specific effects on functional connectivity but does not influence associative memory performance. *bioRxiv*. p 2020.04.23.056655.
51. Beynel L, Powers JP, Appelbaum LG (2020): Effects of repetitive transcranial magnetic stimulation on resting-state connectivity: A systematic review. *Neuroimage* 211: 116596.
52. Volkow ND, Michaelides M, Baler R (2019): The Neuroscience of Drug Reward and Addiction. *Physiol Rev* 99: 2115–2140.
53. Robinson SM, Sobell LC, Sobell MB, Leo GI (2014): Reliability of the Timeline Followback for cocaine, cannabis, and cigarette use. *Psychol Addict Behav* 28: 154–162.
54. Fitzgerald PB, Hoy KE, Reynolds J, Singh A, Gunewardene R, Slack C, *et al.* (2019): A pragmatic randomized controlled trial exploring the relationship between pulse number and response to repetitive transcranial magnetic stimulation treatment in depression. *Brain Stimulation: Basic, Translational, and Clinical Research in Neuromodulation* 0.
<https://doi.org/10.1016/j.brs.2019.09.001>
55. Tang Z-M, Xuan C-Y, Li X, Dou Z-L, Lan Y-J, Wen H-M (2019): Effect of different pulse numbers of transcranial magnetic stimulation on motor cortex excitability: Single-blind, randomized cross-over design. *CNS Neurosci Ther* 25: 1277–1281.
56. Fitzgerald PB, McQueen S, Herring S, Hoy K, Segrave R, Kulkarni J, Daskalakis ZJ (2009): A study of the effectiveness of high-frequency left prefrontal cortex transcranial magnetic stimulation in major depression in patients who have not responded to right-sided stimulation. *Psychiatry Res* 169: 12–15.
57. Alcalá-Lozano R, Morelos-Santana E, Cortés-Sotres JF, Garza-Villarreal EA, Sosa-Ortiz AL, González-Olvera JJ (2018): Similar clinical improvement and maintenance after rTMS at 5 Hz using a simple vs. complex protocol in Alzheimer’s disease. *Brain Stimul* 11: 625–627.

58. Salinas FS, Franklin C, Narayana S, Szabó CÁ, Fox PT (2016): Repetitive Transcranial Magnetic Stimulation Educes Frequency-Specific Causal Relationships in the Motor Network. *Brain Stimul* 9: 406–414.
59. Petrides M, Pandya DN (1999): Dorsolateral prefrontal cortex: comparative cytoarchitectonic analysis in the human and the macaque brain and corticocortical connection patterns. *Eur J Neurosci* 11: 1011–1036.
60. Trapp NT, Bruss J, King Johnson M, Uitermarkt BD, Garrett L, Heinzerling A, *et al.* (2020): Reliability of targeting methods in TMS for depression: Beam F3 vs. 5.5 cm. *Brain Stimul* 13: 578–581.
61. Ning L, Makris N, Camprodon JA, Rathi Y (2019): Limits and reproducibility of resting-state functional MRI definition of DLPFC targets for neuromodulation. *Brain Stimul* 12: 129–138.
62. Conde V, Vollmann H, Sehm B, Taubert M, Villringer A, Ragert P (2012): Cortical thickness in primary sensorimotor cortex influences the effectiveness of paired associative stimulation. *Neuroimage* 60: 864–870.
63. Filmer HL, Ehrhardt SE, Shaw TB, Mattingley JB, Dux PE (2019): The efficacy of transcranial direct current stimulation to prefrontal areas is related to underlying cortical morphology. *Neuroimage* 196: 41–48.
64. Makris N, Gasic GP, Kennedy DN, Hodge SM, Kaiser JR, Lee MJ, *et al.* (10/2008): Cortical Thickness Abnormalities in Cocaine Addiction—A Reflection of Both Drug Use and a Pre-existing Disposition to Drug Abuse? *Neuron* 60: 174–188.
65. Kaag AM, Crunelle CL, van Wingen G, Homberg J, van den Brink W, Reneman L (2014): Relationship between trait impulsivity and cortical volume, thickness and surface area in male cocaine users and non-drug using controls. *Drug Alcohol Depend* 144: 210–217.
66. Hirsiger S, Hänggi J, Germann J, Vonmoos M, Preller KH, Engeli EJE, *et al.* (2019):

Longitudinal changes in cocaine intake and cognition are linked to cortical thickness

adaptations in cocaine users. *NeuroImage: Clinical* 21: 101652.

67. López-Goñi JJ, Fernández-Montalvo J, Arteaga A (2012): Addiction Treatment Dropout:

Exploring Patients' Characteristics. *Am J Addict* 21: 78–85.

68. Fernandez-Montalvo J, López-Goñi JJ (2010): Comparison of completers and dropouts in

psychological treatment for cocaine addiction. *Addict Res Theory* 18: 433–441.

69. Agosti V, Nunes E, Ocepeck-Welikson K (1996): Patient factors related to early attrition from

an outpatient cocaine research clinic. *Am J Drug Alcohol Abuse* 22: 29–39.