

## Early Repolarization Pattern is Associated with Schizophrenia:

### A Single Center Experience in Japan

Hiroshi Kameyama<sup>1</sup> MD, Kenichi Sugimoto<sup>2</sup>MD,PhD, Keisuke Inamura<sup>1</sup>MD,PhD,

Kyoko Itoh<sup>3</sup>MD,PhD, Fumitoshi Kodaka MD,PhD, Yuki Matsuda<sup>1</sup>MD,PhD, Kazutaka

Nukariya<sup>1</sup>MD,PhD, Tomohiro Kato<sup>3</sup>MD,PhD, Masahiro Shigeta<sup>1</sup>MD,PhD

<sup>1</sup>Department of Psychiatry, The Jikei University School of Medicine,

<sup>2</sup>Department of Cardiology, The Jikei University School of Medicine,

<sup>3</sup>Center for Predictive Medicine, The Jikei University Hospital.

**Brief title:** Early repolarization pattern and schizophrenia.

**Conflict of Interest:** none

**Funding:** none

**Correspondence to:**

**Name:** Hiroshi Kameyama

**Address:** Department of Psychiatry, The Jikei University School of Medicine, 3-19-18, Nishi-

Shimbashi, Minato-Ku, Tokyo 105-8471, Japan

Tel: +81-3-3433-1111 Fax: +81-3-3437-0228

E-mail: [h27kameyama@jikei.ac.jp](mailto:h27kameyama@jikei.ac.jp)

## **Abstract**

### **Introduction**

Recent studies have shown a high frequency of abnormal electrocardiograms in patients with schizophrenia. The objective of this study was to associate schizophrenia diagnoses with early repolarization patterns in a sample of hospitalized patients from a single hospital in Japan.

### **Methods**

We conducted a retrospective age, sex and coronary risk factors matched case-control study on 85 patients with schizophrenia and 89 controls from medical checkups. First, we compared the presence of early repolarization patterns in both groups. Secondly, we elucidated an association between the presence of an early repolarization pattern and clinical findings in the patients' groups. We also evaluated J-point elevation patterns.

### **Results**

As a result, we found that both early repolarization patterns and J-point elevation patterns observed were significantly higher in the schizophrenic group than in the matched control group (early repolarization pattern 23:6  $P < 0.001$ ; J-point elevation pattern 34:12;  $P = 0.001$ ). After

multivariable logistic regression among the patients and controls, schizophrenia was the independent predictor for early repolarization pattern ( $P = 0.001$ ) and J-point elevation ( $P < 0.001$ ). Among the patients, the independent predictor for early repolarization pattern was psychiatric family history ( $P = 0.006$ ), while older age ( $P = 0.038$ ) and psychiatric family history ( $P = 0.014$ ) were predictors for J-point elevation patterns.

## **Conclusion**

These findings suggest that an association between early repolarization pattern or J-point elevation pattern and schizophrenia in a single Japanese center.

## **Key words**

Cardiovascular disease, Early repolarization pattern, Schizophrenia, Electrocardiogram

## **Text**

### **Introduction**

Schizophrenia, which is characterized by hallucinations and delusions, is a common familial psychiatric disorder and is prevalent in about 1% of the general population [1]. Despite intensive study, its molecular etiology remains enigmatic [2]. The outcome of schizophrenia has improved significantly with the administration of antipsychotics based on the dopamine hypothesis [3]. However, about 30% of patients with schizophrenia did not responses to conventional therapy,

experiencing relapses and a deterioration in their symptoms, and requiring hospitalization [4]. In these refractory cases, there is a different pathological mechanism which does not match the dopamine hypothesis [5]. A biological indicator for these patients is also required.

Many biological indicators have been studied for central nervous disorders including mental disorders, with an association between abnormalities in electrocardiograms (ECG) and central nervous disorders including psychiatric diseases being reported recently. Parisi P et al. presented a family study in which Brugada syndrome, which is characterized by Brugada-ECG and sudden cardiac death, and epilepsy coexist in the same family and this report indicated that familial abnormalities of the central nervous system is reflected on electrocardiograms [6]. In patients with schizophrenia, the Brugada-ECG pattern was seen more frequently [7, 8] and longer QT interval prolongation was observed [9].

However, the percentage of the patients who show Brugada-ECG is not high, and the reported average QT prolongation is not within an abnormal range. Moreover, the associations between these findings and psychiatric clinical factors are not clear. In addition to Brugada-ECG and longer QT interval, early repolarization pattern (ERP) is known as a finding showing abnormal repolarization. ERP and J-point elevation pattern, which are not uncommon and often observed in younger and healthier people [10], are arrestive electrocardiographic patterns associated with

sudden cardiac death [11,12]. Recently, it has been reported that there are associations between ERP and attention-deficit hyperactivity disorder [13,14], and the patients with suicidal risks [15]. Moreover, Fitzgerald et.al reported that Patients with serious mental illness, especially schizophrenia/schizoaffective disorder, exhibit a significantly high rate of abnormal late potentials on Signal-averaged electrocardiogram (SAECG) and ERP [16].

However, the prevalence of ERP and the association between ERP and clinical findings are remained unclear.

Moreover, in clinical practice, many patients with schizophrenia are already on medication [7,8], and it is important to consider the effect of these drugs on electrocardiograms. Antipsychotics, mood stabilizers, and antidepressants are known to cause electrocardiogram changes such as QT prolongation and/or Brugada-ECG [17,18]. With regard to ERP, it has been reported that their frequency decreases in multi-antiepileptic combination cases [19] or no significant effect [20] contrary to QT prolongation or Brugada-ECG. To date, the effects of psychiatric drugs on early repolarization pattern have not been reported. The purposes of the present study are follows.

First, we retrospectively compared the presence of ERP and J-point elevation patterns between schizophrenic patients and coronary risk factors-matched controls. Coronary risk factor-matched controls were selected from medical checkups. We also used logistic regression analysis in order

to investigate the associations between ERP or J-point elevation pattern and confounding factors including psychiatric drug use (calculated by chlorpromazine equivalent [21] and use of depolarization-blocking drugs [22]). Secondly, we used logistic regression analysis in order to investigate the relationship between clinical findings such as psychiatric family history and electrocardiographic findings among the patients.

## **Methods**

### *Participants*

We performed a retrospective age-, sex-, and coronary risk factors-matched case-control study on 85 patients with adult schizophrenia (schizophrenia or schizoaffective disorder) who had been hospitalized in the psychiatric departments of Jikei University from January 2013 to December 2017 to ensure validity of diagnosis, and who underwent ECGs for general screening during follow-up examinations.

Considering that the patients having greater coronary risk factors, controls matching the patients in terms of age, sex, presence of dyslipidemia (DLP), diabetes mellitus (DM), or smoking, were selected randomly from medical checkups of 89 subjects at Jikei University hospital who did not have a diagnosis or a family history of psychiatric disorders within second degree relatives.

For diagnoses of schizophrenia and schizoaffective disorder, we followed the criteria of the

Diagnostic and Statistical Manual of Mental Disorders, 4th Edition, Text Revision (DSM-IV-TR) (American Psychiatric Association, 2000).

We excluded electrocardiograms in hypothermia or hyperthermia, and patients or controls with structural heart disease, bundle branch block, or WPW syndrome [23]. Additionally, we also excluded ECG contaminated by artifacts or electromyogram noise.

A flow diagram showing the participants and the reasons for their exclusion is presented in Figure 1. This retrospective study was conducted in accordance with the Declaration of Helsinki and approved by the research ethics committee of Jikei University (Approval number: 30-152).

#### *ECG Evaluation*

All ECGs were recorded at a paper speed of 25 mm/sec and amplitude 1 mV/10 mm in the central clinical laboratory or Center for Predictive Medicine. Two independent reviewers (H.K and K.S) blinded to clinical findings analyzed all the first recorded ECGs without electrolyte disturbance if the results of blood tests were available. If the first ECG was recorded under electrolyte abnormality, the following electrogram was analyzed with normal electrolytes.

Disagreements were resolved by consensus. To classify an ECG as ERP or J-point elevation, both reviewers had to be in agreement. We evaluated electrocardiograms in accordance with the method proposed by Peter W. Macfarlane in 2015 [24] as follows. ERP is present if all the

following criteria are met. First, there is an end-QRS notch or slur on the downslope of a prominent R-wave. If there is a notch, it should lie entirely above the baseline. The onset of a slur must also be above the baseline. Second, the J-point peak is  $\geq 0.1$  mV in two or more contiguous leads of the 12-lead ECG, excluding leads V1 to V3. Third, QRS duration is  $< 120$  ms. Both slur and notch should occur in the final 50% of the R-wave downslope to be regarded as ERP in order to exclude fragmented QRS. ST-segment slope should be measured from the termination of the J-point. The ST segment should be regarded as horizontal or downward sloping if the amplitude of the ST-segment 100 ms after termination of the J-point is less than or equal to the amplitude at termination of the J-point. The ST-segment should be regarded as upward sloping if the amplitude of the ST-segment 100 ms after termination of the J-point is greater than the amplitude at termination of the J-point. Additionally, we also evaluated the amplitude of the J-point peak elevation 0.05 mV above the baseline with the criteria met above as J-point elevation pattern. See figure 2 for example of ERP and J-point elevation pattern.

### *Confounders and Clinical Findings*

Generally, antipsychotics have been found to influence the human ether-a-go-go related gene (HERG) channel and cause QT prolongation [17]. To account for the effects of antipsychotics medication, an equivalence dose (chlorpromazine equivalent, CPE) was calculated using methods



proposed by Inagaki [21]. We also calculated doses equivalent to 100 mg/day of chlorpromazine of newer antipsychotics asenapine equal to olanzapine [25].

Additionally, some psychiatric drugs could affect the J-point and augment Brugada-ECG, which are listed in Brugada Drug's website [22]. We also evaluated those antipsychotics and mood stabilizers that are listed as depolarization-blocking drugs, which could affect the amplitude of the J point among the patients as previously studied [7,8].

Secondly, we examined the clinical findings of ERP or J-point elevation pattern among the patients. We compared the age, sex and heart rate, and psychiatric family histories of patients within second-degree relatives both with and without ERP or J-point elevation patterns.

### *Statistical Analysis*

IBM SPSS 25 for Windows (SPSS Japan Inc., Tokyo, Japan) was used for all the statistical analyses. The normality of the continuous variables was tested using the Kolmogorov–Smirnov test. The continuous variables were compared using an unpaired Student's T-test or the Mann–Whitney U-test when appropriate. Continuous variables with normal distribution were expressed as mean  $\pm$  SD and continuous variables with non-normal were expressed as the median [25th, 75th percentiles]. The categorical variables were compared using the chi-square analysis or fisher test when appropriate. Logistic regression was performed in order to evaluate the association

between schizophrenia and ERP or J-point elevation pattern, and the diagnosis of schizophrenia was entered as the dependent variable, and the presence of ERP or J-point elevation pattern, sex, age heart rate, coronary risk factors, CPE, and use of depolarization-blocking drugs were entered as independent variables among the patients and control subjects. To evaluate the associations between ERP or J-point patterns and clinical findings in the patients, the presence of ERP or J-point elevation patterns were entered as dependent variables, and sex, age, HR, and psychiatric family history were entered into a regression as independent variables. Two-tail P value < 0.05 was statistically significant.

## **Results**

### *Study participants and clinical characteristic.*

Table 1 presents the clinical and electrocardiographic characteristics of both groups. 59 of the 85 patients were female. 57 of the 89 matched controls were female. Heart rate was significantly faster ( $P < 0.001$ ) and PR interval was shorter ( $P < 0.001$ ) in the patients' group. None of the subjects in the control group were under antidepressants, mood stabilizers, or antipsychotics. The presence of ERP or J-point elevation patterns was more prevalent in the schizophrenic group (Both  $P < 0.001$ ). The characteristics of ERP and J-point elevation in each group were compared between the controls and the patients. There was no significant difference between the controls

and the patients in ERP amplitude. Both ERP and J-point elevation were more prevalent in the inferior lead in the patients (ERP:  $P = 0.005$ , J-point elevation pattern:  $P = 0.011$ ). Upsloping pattern was more common in patients; however, there was no significant difference in presence of horizontal or downsloping ST segment patterns.

All but three of the patients were under antipsychotic medication. 52 out of 85 patients took second-generation antipsychotic drugs only; five patients took first-generation antipsychotics only. 23 patients took both first-generation antipsychotics and second-generation antipsychotics. 13 patients were prescribed mood stabilizers with depolarization-blocking effects as an adjunctive therapy (Lamotrigine for 7 patients, Carbamazepine for 5 patients, Lithium for 5 patients). No patients were under antiarrhythmic drug use.

*Predictors for ERP or J-point Elevation Patterns among the patients and controls.*

After multivariable logistic regression between the patients and the sex- and age-matched controls, we found that the diagnosis of schizophrenia is an independent predictor for the presence of ERP and J -point elevation pattern (ERP:  $P = 0.001$ , J-point elevation pattern  $P < 0.001$ ). (Table 2). Confounding factors, such as coronary risk factors, resting heart rate, chlorpromazine equivalent and use of depolarization-blocking drugs were not significant predictors.

## *Associations Between Clinical Findings and ERP or J-point Elevation Patterns in Schizophrenic Patients*

Familial psychiatric history of schizophrenia is an independent predictor for the presence of ERP, and older age and familial psychiatric history are independent predictors for J-point elevation patterns (Table 3).

### **Discussion**

In this study, schizophrenia patients in our hospital showed an increased probability of ERP and J-point elevation patterns, and in our schizophrenic patients, familial psychiatric histories were demonstrated to be independent predictors for both patterns.

In previous studies, the prevalence of ERP was characterized by J wave ranges between 1.3 % and 11.2 % in the general Asian population [10, 26]. Considering these results, ERP was more markedly observed in our schizophrenic patients. In our study, however, no patients had Brugada-ECG, which may be due to 70% of the patients being female as well as the small sample size compared with the previous studies [7, 8]. There was no difference in QTc time between the patient group and the control group, which may be due to the higher heart rate in the patient group.

### *Possible Mechanism of Early Repolarization Pattern Among Patients With Schizophrenia*

In the present study, electrocardiographic findings such as ERP and J-point elevation patterns were significantly more frequent in patients with schizophrenia than among the control group.

Several possibilities may explain these results.

Initially, we thought a genetic point of view may explain these results. Mutations in ion channels can be considered gene changes that can cause electrocardiographic changes, and the diseases that are related to these mutations are being studied as cardiac ion channel diseases [27].

The CACNA1C gene is known as a crucial gene in sudden cardiac death associated with ERP [28]. Previous epidemiological surveys have reported that mutations of CACNA1C were associated with psychiatric disorders such as schizophrenia [29]. Considering these previous reports, there might be some genetic overlap between psychiatric disorders and cardiac channelopathies.

As a second hypothesis, it may be considered that electrocardiogram abnormalities were due to chronic inflammation. Chronic inflammation has recently attracted attention as a cause of mental illness. A previous study has shown over-activation of microglia in PET studies in patients with schizophrenia [30]. In another study, examination of peripheral blood also showed elevation of IL-2, IL-6, IL-10, and IFN- $\gamma$  among patients with schizophrenia [31]. Schizophrenia is a progressive disease and linked to chronic inflammation, which has been mentioned as a possible

cause [32]. There are many reports suggesting a relationship between ECG abnormalities and inflammation. It is reported that IL-6 was elevated in subjects with ERP [33]. The frequency of ERP was higher in psoriasis patients compared to controls [34]. These reports suggest that the existence of chronic inflammation is also considered to be a possible factor of early repolarization patterns, as observed in schizophrenic patients.

#### *Effects of Drugs on ERP*

We should also consider the effect of psychiatric drugs on electrocardiograms. Some psychiatric drugs are reported to be associated with drug-induced Brugada-ECG [22]. In addition to these drugs, some psychiatric medications could have depolarization-blocking properties [35, 36]. However, contrary to Brugada-ECG, ERP was reported to be attenuated by depolarization-blocking drugs [37].

Additionally, an antiepileptic drug, which is also used as a mood stabilizer and is partially reported to be a depolarization-blocking drug, did not have a significant effect on ERP [20]. It is even reported that ERP is less likely to be recognized in patients who were under multiple antiepileptic drugs [19].

It is also known that antipsychotics act not only on depolarization but also on repolarization, and the mechanism that mainly affects repolarization is HERG channel-mediated QT prolongation

[17]. However, there are no reports on the effects associated with Ito channels [38], which is important in ERP. As far as we know, it has not been reported that the use of antipsychotic drugs has caused manifestations of ERP.

Even drug-induced ERP by sodium channel blockers was thought to be rare [39]. In this study, use of depolarization-blocking drugs or chlorpromazine equivalents were excluded as a significant predictor for ERP or J-point elevation pattern, and these results are compatible with these reports.

Moreover, it has been reported that anti-cholinergic effects attenuated early repolarization pattern [40], and administration of antipsychotics may not contribute to the induction of early repolarization.

In small numbers of patients, ERP was augmented by sodium channel blockers [41, 42]. These patients showed J point elevation in the anterior leads similar to Brugada-ECG. However, in our patients, no patients showed suspected Brugada-ECG patterns.

### *Limitations*

This study is a retrospective single center study. Therefore, the findings may not be generalizable to the wider population. We did not perform genetic tests associating cardiac ion channels or evaluate for inflammatory markers including CRP. Future studies need to consider these

parameters in order to clarify their role in the underlying pathophysiology between schizophrenia and ERP or J-point elevation pattern. The prescribed drugs could contribute to the occurrence of ERP or J-point elevation pattern. Although we adjusted for the effect of the antipsychotic drugs by converting their doses to chlorpromazine equivalents, the effects of drug interaction were not evaluated. The patients or controls without repolarization abnormalities during the daytime may exhibit ERP or J-point elevation pattern at night. Therefore, future studies should consider performing the ECGs both at night and during the day.

## **Conclusion**

This preliminary case-control study in a predominantly female hospitalized schizophrenic population suggests that there may be associations between ERP or J-point elevation pattern, and this diagnosis and the presence of a family history. Further, more rigorous studies controlling for drug use, hospitalization, and genetic factors should be developed in the future.

## **Acknowledgments**

None.

## **Conflict of Interest Statement**

None.

## **References**



1. Chang WC, Wong CSM, Chen EYH, et.al: Lifetime Prevalence and Correlates of Schizophrenia-Spectrum, Affective, and Other Non-affective Psychotic Disorders in the Chinese Adult Population. *Schizophr Bull* 2017; 43(6):1280-1290.
2. Sawa A, Snyder SH: Schizophrenia: diverse approaches to a complex disease. *Science* 2002; 296(5568):692-695.
3. Dixon LB, Lehman AF, Levine J: Conventional antipsychotic medications for schizophrenia; *Schizophr Bull.* 1995; 21(4):567.
4. Hogarty GE, Ulrich RF. The limitations of antipsychotic medication on schizophrenia relapse and adjustment and the contributions of psychosocial treatment; *J Psychiatr Res.* 1998; 32(3-4):243-250.
5. Potkin SG, Kane JM, Correll CU et.al. The neurobiology of treatment-resistant schizophrenia: paths to antipsychotic resistance and a roadmap for future research; *NPJ Schizophr.* 2020; 6(1):1.
6. Parisi P, Oliva A, Coll Vidal M, et.al: Coexistence of epilepsy and Brugada syndrome in a family with SCN5A mutation. *Epilepsy Res* 2013; 105(3):415-418.
7. Blom MT, Cohen D, Seldenrijk A, Penninx BWJH, Nijpels G, Stehouwer CDA, Dekker JM, Tan HL: Brugada syndrome ECG is highly prevalent in schizophrenia. *Circ Arrhythm*

Electrophysiol 2014; 7(3):384-391.

8. Sutterland AL, Blom MT, Ladee K, et.al: Increased prevalence of ECG suspicious for Brugada Syndrome in recent onset schizophrenia spectrum disorders. Schizophr Res. 2019; 210:59-65.

9. Fujii K, Ozeki Y, Okayasu H et.al: QT is longer in drug-free patients with schizophrenia compared with age-matched healthy subjects; PLoS One. 2014; 9(6): e98555.

10. Sun GZ, Ye N, Chen YT, Zhou Y, Li Z, Sun YX: Early repolarization pattern in the general population: Prevalence and associated factors. Int J Cardiol 2017; 230:614-618.

11. Haïssaguerre M, Derval N, Sacher F, et.al: Sudden cardiac arrest associated with early repolarization. N Engl J Med. 2008; 358(19):2016-2023.

12. Rosso R, Kogan E, Belhassen B et.al: J-point Elevation in Survivors of Primary Ventricular Fibrillation and Matched Control Subjects: Incidence and Clinical Significance. J Am Coll Cardiol. 2015; 28;470-477.

13. Nahshoni E, Sclarovsky S, Spitzer S, Zalsman G, Strasberg B, Weizman A: Early repolarization in young children with attention-deficit/hyperactivity disorder versus normal controls: a retrospective preliminary chart review study. J Child Adolesc Psychopharmacol 2009; 19(6):731-735.

14. Isart FA, Ramos FG, Isart-Infante F: Cardiac Early Repolarization Pattern Anomalies Among Children and Adolescents With and Without Attention-Deficit Hyperactivity Disorder: A Community Observational Study. *Glob Pediatr Health*.2016; 6:2333794X19828311.
15. Kameyama H, Sugimoto K, Itoh K, Nukariya K, Kato T, Shigeta M: Early Repolarization Pattern and Suicidal Risks: A Single Center Case-Control Study. *medRxiv* 2020.07.10.20150482
16. Fitzgerald JL, Hay K, Sheridan J, Chadwick A, Burke A, Haqqani HM. Late Potentials and Early Repolarisation Are Associated With Serious Mental Illness and May Portend Increased Arrhythmic Risk. *Heart Lung Circ*. 2020;S1443-9506(20)30098-6.
17. Rampe D, Murawsky MK, Grau J, Lewis EW: The antipsychotic agent sertindole is a high affinity antagonist of the human cardiac potassium channel HERG. *J Pharmacol Exp Ther* 1998; 286(2):788-793.
18. Lubna NJ, Wada T, Nakamura Y et.al: Amitriptyline May Have Possibility to Induce Brugada Syndrome Rather Than Long QT Syndrome. *Cardiovasc Toxicol*. 2018; 18:91-98.
19. Ishizue N, Niwano S, Saito M et.al: Polytherapy With Sodium Channel-Blocking Antiepileptic Drugs Is Associated With Arrhythmogenic ST-T Abnormality in Patients With Epilepsy. *Seizure*. 2016; 40:81-87.

20. Hayashi K, Kohno R, Akamatsu N, Benditt DG, Abe H: Abnormal Repolarization: A Common Electrocardiographic Finding in Patients with Epilepsy. *J Cardiovasc Electrophysiol* 2019; 30(1):109-115.
21. Inada T, Inagaki A: Psychotropic dose equivalence in Japan. *Psychiatry Clin Neurosci* 2008; 69(8):440-447.
22. Postema PG, Neville J, de Jong JS, Romero K, Wilde AA, Woosley RL. Safe drug use in long QT syndrome and Brugada syndrome: comparison of website statistics. *Europace*. 2013; 15(7):1042-1049.
23. Mizumaki K, Nishida K, Iwamoto J, et.al: Early repolarization in Wolff-Parkinson-White syndrome: prevalence and clinical significance. *Europace* 2011; 13(8):1195-1200.
24. Macfarlane PW, Antzelevitch C, Haissaguerre M, et.al:The Early Repolarization Pattern: A Consensus Paper. *J Am Coll Cardiol* 2015; 66(4):470-477.
25. Shih-Ku Lin, Yen-Feng Lin, Shu-Yu Yang, et.al: Comparison of the Defined Daily Dose and Chlorpromazine Equivalent Methods in Antipsychotic Drug Utilization in Six Asian Countries. *Neuropsychiatry (London)* 2018; 8(6),1847-1852.
26. Cho MS, Kwon CH, Nam GB, et.al: Characteristics of early repolarization parameters and prognostic implications in the general ambulatory Korean population. *Int J Cardiol* 2017;

227:571-576.

27. Garcia-Elias A, Benito B. Ion Channel Disorders and Sudden Cardiac Death. *Int J Mol Sci.* 2018; 28;19(3). pii: E692.

28. Burashnikov E, Pfeiffer R, Barajas-Martinez H et.al: Mutations in the cardiac L-type calcium channel associated with inherited J-wave syndromes and sudden cardiac death. *Heart Rhythm* 2010; 7(12):1872-1882.

29. Jiang H, Qiao F, Li Z, et.al: Evaluating the association between CACNA1C rs1006737 and schizophrenia risk: A meta-analysis. *Asia Pac Psychiatry* 2015; 7(3):260-267.

30. van Berckel BN, Bossong MG, Boellaard R, et.al: Microglia activation in recent-onset schizophrenia: a quantitative (R)-[11C]PK11195 positron emission tomography study. *Biol Psychiatry* 2008; 64(9):820-822.

31. Balōtšev R, Koido K, Vasar V, et.al: Inflammatory, cardio-metabolic and diabetic profiling of chronic schizophrenia. *Eur Psychiatry* 2017; 39:1-10.

32. Laskaris LE, Di Biase MA, Everall I, et.al: Microglial activation and progressive brain changes in schizophrenia. *Br J Pharmacol* 2016; 173(4):666-680.

33. Stumpf C, Simon M, Wilhelm M, et.al: Left atrial remodeling, early repolarization pattern, and inflammatory cytokines in professional soccer players. *J Cardiol* 2016; 68(1):64-70.

34. Mastrodonato M, D'Arienzo G, Grimaldi M, et al: Increased prevalence of early repolarization in electrocardiograms of psoriatic patients. *Heart Vessels* 2016; 31(3):408-415.
35. Brauner JM, Hessler S, Groemer TW, Alzheimer C, Huth T: Risperidone inhibits voltage-gated sodium channels. *Eur J Pharmacol.* 2014; 5(728):100-106.
36. Ogata N, Narahashi T: Block of sodium channels by psychotropic drugs in single guinea-pig cardiac myocytes. *Br J Pharmacol.* 1989; 97(3):905-913.
37. Roten L, Derval N, Sacher F, et al: Ajmaline attenuates electrocardiogram characteristics of inferolateral early repolarization. *Heart Rhythm* 2012; 9:232-239.
38. Antzelevitch C, Yan GX. J-wave syndromes: Brugada and early repolarization syndromes. *Heart Rhythm.* 2015; 12:1852-1866.
39. Nam GB, Ko KH, Kim J, et al. Mode of onset of ventricular fibrillation in patients with repolarization pattern vs Brugada syndrome. *Eur Heart J.* 2010; 31:330-339.
40. Shinohara T, Takahashi N, Saikawa T, et al. Characterization of J wave in a patient with idiopathic ventricular fibrillation. *Heart Rhythm.* 2006; 3:1082-1084.
41. Watanabe H, Nogami A, Ohkubo K, et al. Electrocardiographic characteristics and SCN5A mutations in idiopathic ventricular fibrillation associated with early repolarization. *Circ Arrhythm Electrophysiol.* 2011; 4(6):874-881.

42. Yagishita A, Yamauchi Y, Obayashi T, et.al. Idiopathic ventricular fibrillation associated with early repolarization which was unmasked by a sodium channel blocker after catheter ablation of atrial fibrillation. *J Interv Card Electrophysiol.* 2014; 41(2):145-146.

Table 1. Comparison of clinical characteristics in schizophrenic patients and controls

	Patients (N = 85)	Controls (N = 89)	P value
Males (%)	26 (31%)	32 (36%)	0.52
Age (years)	41 [33-53]	43 [34-54]	0.39
Coronary risk factors			
Diabetes mellitus (%)	11 (13%)	14 (16%)	0.67
Hypertension (%)	6 (7%)	3 (3%)	0.26
Dyslipidemia (%)	23 (27%)	25 (28%)	1.00
Smoker (%)	22 (26%)	22 (25%)	0.86
Use of depolarization blocking drugs (%)	14 (16%)	0 (0%)	<0.001
Chlorpromazine equivalent (mg/day)	575 [375-913]	0 [0-0]	<0.001
Structural heart disease			
ECG findings			
Heart rate (bpm)	73 [66-82]	62 [57-70]	<0.001
PR intervals (ms)	147 [139-163]	156 [147-173]	<0.001
QRS duration (ms)	94 [88-99]	95 [90-100]	0.277
QTc intervals (ms)	416 ± 24	414 ± 19	0.236
ERP (%)	23 (27%)	6 (7%)	<0.001
J-point elevation (%)	34 (40%)	12 (13%)	<0.001
J point amplitude of ERP (mm)	1.7 [1.3-2.0]	1.6 [1.5-1.9]	0.978
ERP locations			
Inferior leads (%)	15 (18%)	4 (4%)	0.005
Left precordial leads (%)	4 (5%)	1 (1%)	0.20
Lateral leads (%)	2 (2%)	0 (0%)	0.24
Both inferior and lateral leads (%)	1 (1%)	1 (1%)	1.00
ST segment pattern			
Upsloping pattern (%)	18 (21%)	2 (2%)	<0.001
downsloping or horizontal pattern (%)	4 (5%)	4 (4%)	1.00
J-point elevation location			
Inferior leads (%)	21 (25%)	9 (10%)	0.011
Left precordial leads (%)	3 (4%)	1 (1%)	0.36
Lateral leads (%)	5 (6%)	0 (0%)	0.03
Inferior and lateral leads (%)	3 (4%)	2 (2%)	0.68

Data are expressed as numbers, Value as mean ± SD, no.(%) or median [25th, 75th percentiles].  
Abbreviations: ERP: early repolarization pattern.



Table 2. Logistic regression among the healthy controls and the patients to predict the presence of early repolarization patterns and J-point elevation patterns

ERP					
Variables	B Coefficient	Standard Error	95%CI of OR		P value
			Lower Bound	Upper Bound	
Schizophrenia (presence)	2.121	0.623	2.458	28.276	0.001
Age (per year)	0.014	0.018	0.979	1.050	0.441
Sex (male)	0.142	0.503	0.430	3.088	0.78
Heart rate (per bpm)	-0.010	0.020	0.952	1.029	0.598
DM (presence)	-0.258	0.697	0.197	3.029	0.771
HT (presence)	-0.094	0.924	0.149	5.569	0.919
DLP (presence)	0.376	0.505	0.542	3.918	0.456
Smoking (presence)	0.396	0.513	0.544	4.062	0.44
Chlorpromazine equivalent ( mg/day )	-0.001	0.001	0.998	1.000	0.262
Depolarization-blocking-drugs (presence)	0.576	0.657	0.491	6.446	0.381
J-point elevation					
Variables	B Coefficient	Standard Error	95%CI of OR		P value
			Lower Bound	Upper Bound	
Schizophrenia (presence)	1.995	0.521	2.649	20.399	<0.001
Age (per year)	0.019	0.016	0.988	1.052	0.82
Sex (male)	0.100	0.441	0.466	2.623	0.820
Heart rate (per bpm)	-0.009	0.018	0.958	1.026	0.613
DM (presence)	-0.419	0.610	0.199	2.172	0.492
HT (presence)	-0.128	0.821	0.176	4.397	0.876
DLP (presence)	0.296	0.442	0.565	3.198	0.503
smoking (presence)	0.260	0.455	0.532	3.162	0.568
Chlorpromazine equivalent ( mg/day )	-0.001	0.001	0.998	1.00	0.111
Depolarization-blocking-drugs (presence)	1.000	0.639	0.777	9.50	0.117

Abbreviations: CI, confidence interval; DM; diabetes mellitus, DLP, dyslipidemia; HT, hypertension; OR, odd ratio.

Table 3. Logistic regression in schizophrenic patients to predict presence or absence of ERP and J-point elevation

Variables	B Coefficient	Standard Error	95%CI of OR		P value
			Lower Bound	Upper Bound	
Predictor for ERP					
Sex (male)	0.952	0.590	0.815	8.232	0.107
Age(year)	0.032	0.02	0.994	1.073	0.098
Heart rate (bpm)	-0.02	0.02	0.941	1.020	0.321
Psychiatric family history	1.519	0.551	1.552	13.45	0.006
Predictor for J-point elevation					
Sex (male)	1.059	0.545	0.990	8.394	0.052
Age (year)	0.038	0.018	1.002	1.076	0.038
Heart rate (bpm)	-0.028	0.019	0.936	1.01	0.143
Psychiatric family history	1.27	0.519	1.287	9.86	0.014

Abbreviations: CI, confidence interval; ERP, early repolarization pattern; OR, odd ratio.

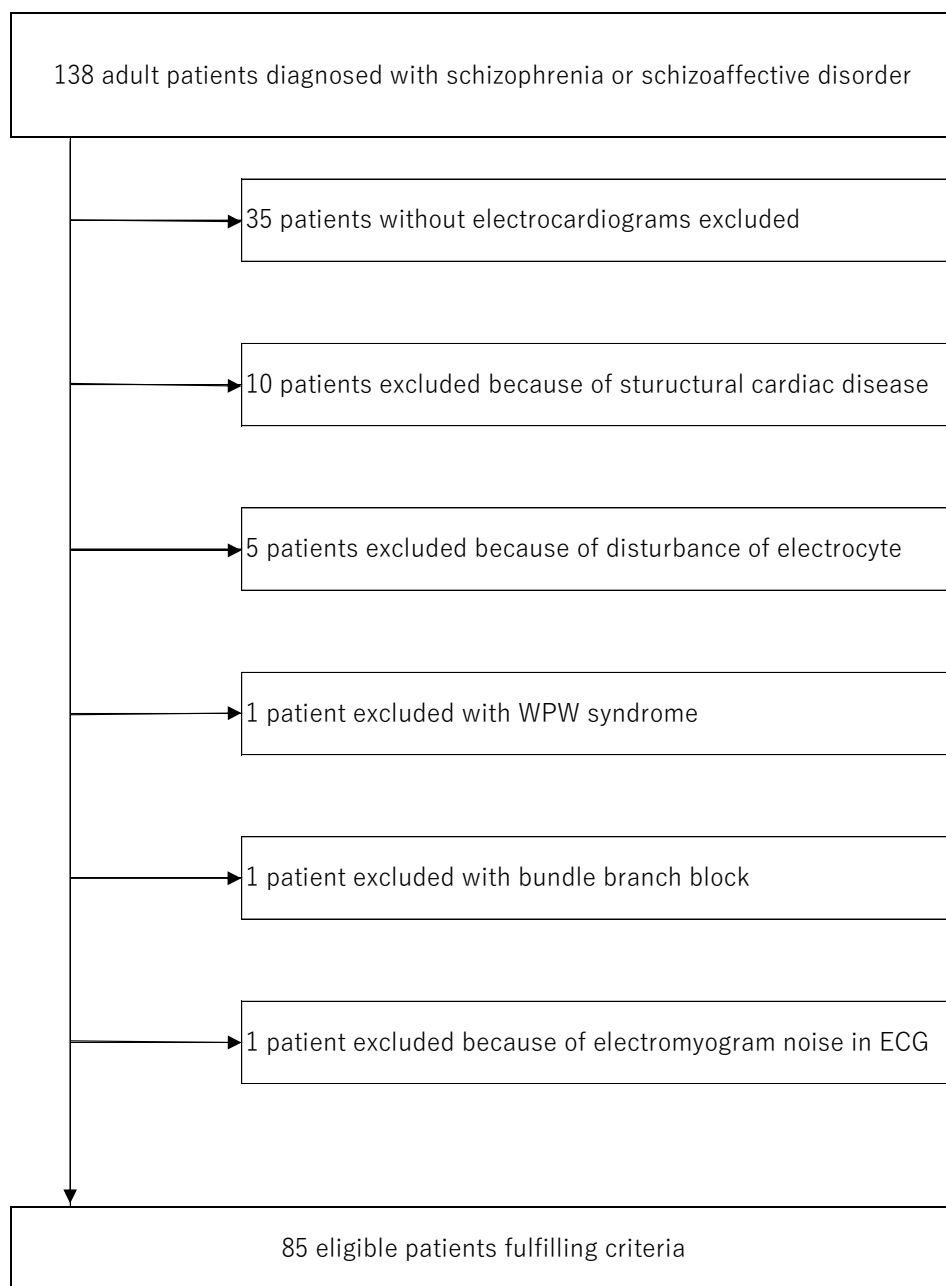


Figure 1. Flow diagram showing study participants.

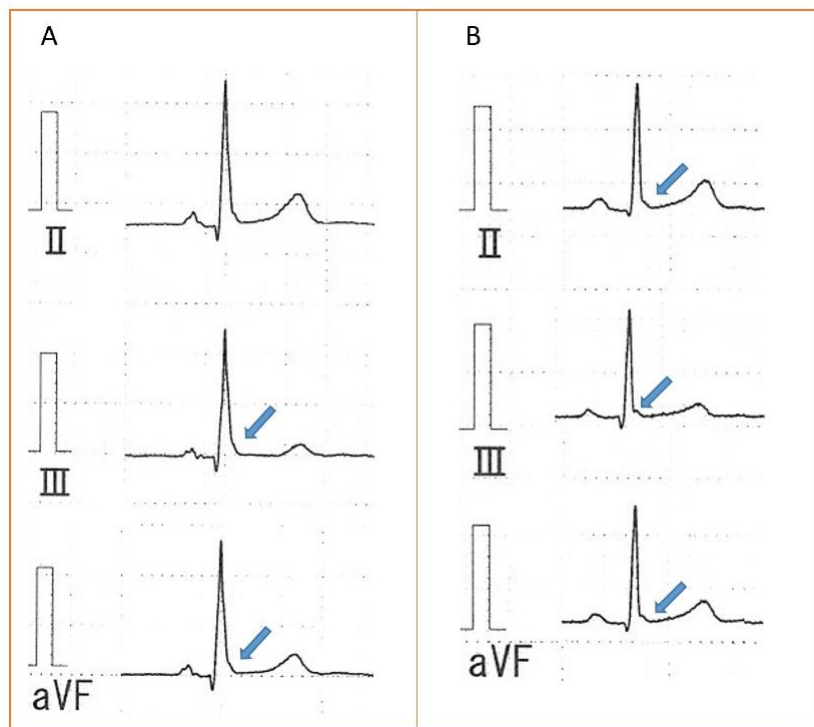


Figure 2

Example of electrocardiograms from schizophrenic patients showing early repolarization pattern in inferior

lead (A) and J-point elevation pattern (J-point peak elevation 0.05 mV above the baseline in contiguous leads.)

in inferior lead (B).