

## TITLE PAGE

Original Article:

### **Neurological manifestations associated with COVID-19: a nationwide registry**

Elodie Meppiel<sup>1</sup> M.D., Nathan Peiffer-Smadja<sup>2,3</sup> M.D., Alexandra Maury<sup>1</sup>, Imen Bekri<sup>4</sup> M.D., Cécile Delorme<sup>5</sup> M.D., Virginie Desestret<sup>6</sup> M.D., Ph.D., Lucas Gorza<sup>7</sup> M.D., Geoffroy Hautecloque-Raysz<sup>8</sup> M.D., Sophie Landre<sup>9</sup>, M.S., Annie Lannuzel<sup>10</sup> M.D. Ph.D, Solène Moulin<sup>11</sup> M.D. Ph.D., Peggy Perrin<sup>12</sup> M.D., Paul Petitgas<sup>13</sup>, François Sellal<sup>8</sup> M.D., Adrien Wang<sup>7</sup> M.D., Pierre Tattevin<sup>13</sup> M.D. Ph.D., Thomas de Broucker<sup>1</sup> M.D., on behalf of the contributors to the NeuroCOVID registry\*

<sup>1</sup>Department of Neurology, Centre Hospitalier de Saint-Denis, Hôpital Delafontaine, F-93200 Saint-Denis, France

<sup>2</sup> Department of Infectious Diseases, Bichat-Claude Bernard Hospital, Assistance-Publique Hôpitaux de Paris, F-75018 Paris, France

<sup>3</sup> Université de Paris, IAME, INSERM, F-75018 Paris, France

<sup>4</sup> Department of Neurology and Stroke Center, Centre Hospitalier de Versailles, F-78150 Le Chesnay, France

<sup>5</sup> Department of Neurology, Pitié-Salpêtrière Hospital, Assistance-Publique Hôpitaux de Paris, F-75013 Paris, France

<sup>6</sup> Department of Neuro-cognition and Neuro-ophthalmology, Hospices Civils de Lyon, Pierre Wertheimer Neurological Hospital, Lyon, France ; the University of Lyon, Claude Bernard Lyon 1 University, F-69000 Lyon, France

<sup>7</sup> Department of Neurology, Hôpital Foch, F-92151 Suresnes, France

<sup>8</sup> Department of Neurology, Hôpitaux civils de Colmar, 68024 COLMAR, France

<sup>9</sup> Department of Infectious Diseases, Hospices Civils de Lyon; the University of Lyon, Claude Bernard Lyon 1 University, F-69000 Lyon, France

<sup>10</sup> Department of Neurology, Centre Hospitalier Universitaire de la Guadeloupe, Faculté de médecine de l'université des Antilles, Centre d'investigation clinique Antilles Guyane, Inserm CIC 1424, F-97100 Pointe-à-Pitre, France

<sup>11</sup> Department of Neurology, Centre Hospitalier Universitaire, Hôpital Maison Blanche, F-51092 Reims, France

<sup>12</sup> Department of Nephrology, Hôpitaux Universitaires de Strasbourg, F-67091 Strasbourg, France

<sup>13</sup> Department of Infectious Diseases and Intensive Care Medicine, Centre Hospitalier Universitaire de Rennes, F-35000 Rennes, France

\* Contributors to the French NeuroCOVID registry are listed in the Supplementary Appendix

**Corresponding author: Elodie Meppiel, Neurology Department, Centre Hospitalier de Saint-Denis, 2 rue du Dr Delafontaine, 93200 SAINT-DENIS, France**

E-mail: [elodie.meppiel@ch-stdenis.fr](mailto:elodie.meppiel@ch-stdenis.fr)

Telephone number 0033142356297

Fax number 0033142356226

**Keywords:** COVID-19, SARS-CoV-2, Nervous System, Neurological manifestations, Registry

### **Running head**

Registry of COVID-19 neurological manifestations

**Funding:** none

## ABSTRACT

**Objective.** To analyze the spectrum and characteristics of neurological manifestations associated with SARS-CoV-2 infection.

**Methods.** We conducted a nationwide, multicentric, retrospective study during the French COVID-19 epidemic in March-April 2020. All COVID-19 patients with *de novo* neurological manifestations were eligible.

**Results.** We included 222 COVID-19 patients with neurological manifestations from 46 centers throughout the country. Median age was 65 years (IQR 53-72), and 136 patients (61.3%) were male. COVID-19 was severe or critical in almost half of the patients (102, 45.2%). Brain imaging was performed in 192 patients (86.5%), including 157 MRI (70.7%). Cerebrospinal fluid was analyzed in 97 patients (43.7%), with positive SARS-CoV-2 PCR in 2 out of 75 tested (2.7%). The most common neurological diseases were COVID-19 associated encephalopathy (CAE, 67/222, 30.2%), acute ischemic cerebrovascular syndrome (AICS, 57/222, 25.7%), encephalitis (21/222, 9.5%), and Guillain-Barré Syndrome (GBS, 15/222, 6.8%). Neurological manifestations appeared after first COVID-19 symptoms with a median delay of 6 days in CAE, 7 days in encephalitis, 12 days in AICS and 18 days in GBS. Around 25% of CAE and AICS were inaugural and 30% of CAE and encephalitis were diagnosed after discontinuation of sedation. Less common manifestations were also described, including meningitis and cranial neuropathy. The median follow-up of the patients was 24 days, with a particularly high short-term mortality rate in patients with CAE and AICS (19/124, 15.3%).

**Interpretation.** Neurological manifestations associated with COVID-19 mainly included CAE, AICS, encephalitis and GBS. Clinical spectrum and outcomes were broad and heterogeneous, suggesting different underlying pathogenic processes.

## **INTRODUCTION**

COVID-19, the disease linked to the SARS-CoV-2 coronavirus, is an emerging infectious disease with first cases reported in China in December 2019. Since then, the virus has continued to spread and on March 11, 2020 the World Health Organization (WHO) characterized COVID-19 as a pandemic. France has been heavily affected by the COVID-19 epidemic and went into lockdown on March 17, 2020. From March 1, 2020 to April 30, 2020, 89 818 new cases of COVID-19 were hospitalized in France. Up to July 2, 2020, more than 160,000 cases and 29,000 deaths had been reported in France. Although common manifestations of the disease including respiratory tract and associated systemic manifestations have been well described<sup>1,2</sup>, neurological manifestations elicited few communications. Headaches, dizziness, anosmia, encephalopathy and strokes have been reported in cohort studies<sup>3,4</sup>. However, the potential pathogenesis of SARS-CoV-2 in the central nervous system remains unclear<sup>5</sup>, and the range of neurological disorders associated with COVID-19 is not fully defined. The present study aims to provide a comprehensive overview of neurological manifestations associated with SARS-CoV-2 infection and to describe the clinical course and outcomes of COVID-19 patients with neurological manifestations.

## **METHODS**

### **Study design**

We conducted a nationwide retrospective, multicentric, observational study to collect neurological manifestations associated with COVID-19. A case report form (CRF) containing the main information regarding COVID-19 and neurological manifestations was sent at regular intervals from March 16 to April 27, 2020 to neurologists, infectious diseases specialists and intensivists through the National College of General Hospital Neurologists (CNNHG), the French Society for Infectious Diseases (SPILF), the Association of French-Speaking Liberal Neurologists (ANLLF), and the Multiple

Sclerosis Society (SF-SEP). The anonymized CRF were collected by email or telefax at the Neurology department of Saint-Denis Hospital, France. In accordance with French law, the study complied with the *Commission Nationale de l'Informatique et des Libertés* (CNIL, reference number 2217844) and ethics committee (reference number RCB 2020-A01300-39) requirements. The IRB CER-MIT n° 2020-0602 COVID has approved the study.

### **Patients and data collection**

We included COVID-19 adult patients with any neurological manifestations occurring 5 days before to 35 days after the first symptoms of COVID-19. COVID-19 patients managed in intensive care units with neurological manifestations after withdrawal of sedation were also included. Only *de novo* neurological symptoms were considered, excluding patients with exacerbations of chronic neurological diseases.

A confirmed case of COVID-19 was defined as a patient with a positive SARS-CoV-2 RT-PCR assay on a naso-pharyngeal sample or a positive SARS-CoV-2 serology (according to local laboratory standard). As RT-PCR analysis and serology were unavailable in some centers during the epidemic, some cases were considered COVID-19 if the clinical history and the chest CT-scan were considered typical according to local expert clinicians. We defined the severity of COVID-19 illness as mild, moderate, severe and critical according to NIH guidelines<sup>6</sup>. Demographical and clinical data, neurological workup findings and outcome were systematically collected. If necessary, in-charge clinicians were directly contacted to collect any missing or uncertain records.

### **Classification of neurological manifestations**

Neurological manifestations were split into Central Nervous System (CNS) and Peripheral Nervous System (PNS) manifestations. Each manifestation was then classified into the following diagnostic categories:

- Stroke was considered in patients with sudden neurological deficit related to an acute vascular lesion on cerebral MRI or CT scan (ischemic and hemorrhagic stroke), in patients with transient focal deficit and normal MRI (transient ischemic attack), or in patients with cerebral venous thrombosis.

- Encephalitis was defined as altered mental status lasting  $\geq 24$  hours and one of the following criteria: white blood count cells (WBCs) in cerebrospinal fluid (CSF)  $> 5/\text{mm}^3$ ; presence of compatible acute lesion on brain MRI.
- Encephalopathy was defined by delirium lasting  $\geq 24$  hours, and could be associated to seizure and/or focal neurological sign, in the absence of criteria for encephalitis criteria. We defined COVID-associated encephalopathy (CAE) if encephalopathy could not be accounted for by another cause such as toxic or metabolic factor according to the reporting clinician.
- Guillain-Barré Syndrome (GBS) was defined according to standard diagnosis criteria<sup>7</sup>.
- Acute meningitis was defined as meningeal syndrome without encephalitic course, and CSF WBC counts  $> 5/\text{mm}^3$ .
- Patients with neurological manifestations that could not be classified into these five categories were classified as ‘others’

## RESULTS

The study was conducted in March-April 2020. Among the 259 CRF submitted, 37 patients were excluded for the following reasons: COVID-19 not confirmed (n=20), neurological symptoms non time-related to other symptoms of COVID-19 (n=12) or neurological symptoms linked to an exacerbation of chronic neurological disease (n=5). The population study (Figure 1) consisted of 222 COVID-19 patients with neurological manifestations from 46 centers in all the regions of continental France and overseas. Participant centers were university hospitals for 101/222 patients (45.5%) and non-university hospitals for 121/222 patients (54.5%). Physicians who filled out the forms were neurologists (146/222, 65.8%), infectious diseases or internal medicine specialists (43/222, 19.4%), intensivists (14/222, 6.3%), or other specialists (19/222, 8.6%). Most patients (217/222, 97.8%) required hospital admission.

## **General characteristics of COVID-19 patients with neurological manifestations**

The general characteristics of the 222 patients are detailed in Table 1. Median age was 65 years (IQR 53-72), and 136 (61.3%) were male. Forty-seven patients (21.2%) had a past neurological history, mostly prior stroke (20, 9.0%) and neurodegenerative disease (17, 7.7%). The diagnosis of COVID-19 was confirmed by a positive SARS-CoV-2 nasopharyngeal rt-PCR in 86.5% (n=192) of the patients and by serology in 1.8% (n=4) of the patients. Twenty-six patients (11.7%) had a diagnosis on the basis of a typical clinical course and imagery. COVID-19 severity was mild or moderate in about half of the patients (120, 54.1%), severe or critical in the other half (102, 45.2%). The most commonly described neurological symptoms were altered mental status (117, 52.4%) and central focal deficit (97, 43.7%). Neurological work-up mostly included brain MRI (157, 70.7%) and CSF examination (97, 43.7%). SARS-CoV-2 PCR was performed in the CSF for 75 patients (33.8%) and was negative in 73/75 cases (97.3%). The median follow-up was 24 days (IQR 17-34). Twenty-eight patients (12.6%) died, mostly following acute respiratory distress syndrome (ARDS, n=17, 7.7%). Stroke was considered to be the cause of death in five patients (2.3%), following brain herniation due to extensive spontaneous intracerebral hematoma (n=2), severe hemorrhagic transformation after ischemic stroke (n=2) or extensive cerebral venous thrombosis (n=1).

## **Clinical spectrum of neurological manifestations associated to SARS-CoV-2 infection**

The spectrum of the neurological manifestations associated with SARS-CoV-2 infection is presented in Figure 1.

### ***CNS manifestations***

One hundred eighty-nine patients (85.1%) had CNS manifestations, mostly encephalopathy (n=85, 38.3% of all patients), strokes (n=63, 28.4%), and encephalitis (n=21, 9.5%).

The distribution of strokes was as follows: acute ischemic cerebrovascular syndromes (AICS, 57/63, 90.5% of all strokes) including 52 acute ischemic strokes and 5 transient ischemic attacks, intracranial hemorrhages (ICH, 5/63, 7.9%) and cerebral venous thromboses (CVT, 1/63, 1.6%).

Among patients with encephalopathy, 67/85 (78%) were classified as COVID-associated encephalopathy (CAE). The 18 remaining patients had other factors accounting for encephalopathy: acute kidney injury in 10, medication in 6, complications of alcohol withdrawal in 4 patients. The other CNS manifestations were isolated seizures (n=8), transient loss of consciousness (n=5), meningitis (n=3), single acute demyelinating lesion (n=2), paraparesis (n=1) and generalized myoclonus with cerebellar ataxia (n=1).

### ***PNS manifestations***

Twenty-nine patients (13.1%) had PNS manifestations, mostly Guillain-Barré syndrome (GBS, n=15, 6.8% of all patients). Ten other patients had peripheral complications of intensive care management, either critical illness neuropathy (n=8) or hypoglossal and pneumogastric nerves palsy following oro-tracheal intubation, known as Tapia syndrome (n=2).

The remaining PNS manifestations were cranial neuropathy (n=3) and bilateral fibular nerve palsy (n=1). Eleven patients (5.9%) had mixed CNS and PNS manifestations, as detailed in Figure 1.

### ***Unclassified manifestations***

Fifteen patients (6.8%) had mixed manifestations of undetermined mechanisms, including headache, dizziness, anosmia, auditory symptoms and subjective sensitive symptoms, in different combinations.

### **Main neurological manifestations associated with COVID-19: AICS, encephalitis, CAE and GBS**

AICS, encephalitis, CAE and GBS patients accounted for 71% (158/222) of the reported neurological manifestations in COVID-19 patients. Their characteristics are presented in table 2 and 3 and detailed below.

### ***Baseline characteristics (table 2)***

Median age was 65 years (IQR 55-78) in AICS patients, 67 years (IQR 51-70) in encephalitis patients, 68 years (IQR 61-75) in CAE patients and 59 years (IQR 53-65) in GBS patients. The proportion of men was higher in each group, particularly in encephalitis patients (15/21, 71.4%) and GBS patients



(13/15, 86.7%). Concerning medical history, 20/67 (29.9%) of CAE patients had neurodegenerative disease, and 43/57 (75.4%) of AICS patients had vascular comorbidities, including 8/52 (14.0%) with prior stroke.

The majority of CAE patients suffered from severe to critical COVID-19 illness (46/67, 68.7%). In GBS and AICS patients, mild and moderate COVID-19 illness predominated, respectively 10/15 (66.7%) and 37/57 (64.9%).

AICS was inaugural of COVID-19 in 14/57 patients (24.6%), and CAE in 15/67 patients (22.4%).

Neurological symptoms were first observed when sedation was withheld for 20/67 CAE patients (29.9%), 6/21 encephalitis patients (28.6%), and 3/15 GBS patients (20.0%). The remaining patients had neurological manifestations several days after the first COVID-19 symptoms, with a median delay of 6 and 7 days respectively in CAE and encephalitis patients, 12 days in AICS and 18 days in GBS.

### ***Clinical course (table 2)***

In AICS, focal central neurological symptoms were present in 56/57 patients (98.2%), and altered mental status in 8/57 (14.0%).

In encephalitis and CAE, all patients had altered mental status. Twelve out of 21 encephalitis patients (57.1%) had focal central neurological symptoms, mostly cerebellar ataxia and pyramidal syndrome, and six (28.6%) had movement disorders, mostly tremor and myoclonus. Focal neurological symptoms were also present in 13/67 CAE patients (19.4%) mostly cerebellar ataxia. Seizure rate was approximately the same in encephalitis (2/21, 9.5%) and in CAE (7/67, 10.4%).

In GBS patients, 11/15 patients (73.3%) had progressive weakness in both arms and legs that could be associated with sensory symptoms. Among these 11 patients, one had oculomotor nerve palsy and another had bilateral facial nerve palsy. Three other patients (20.0%) had proprioceptive sensory loss without limb weakness, associated with facial palsy in one. One patient (6.7%) had bilateral facial palsy and areflexia.

### ***Neurological work-up (table 3)***

Large vessel thrombosis was observed in 16/57 patients with AICS (28.1%), located in internal carotid artery (n=9) and/or the proximal segment of the middle cerebral artery (n=6), or in basilar artery (n=1). Thirteen patients (22.8%) had multi territory ischemic strokes. AICS was cryptogenic in 38/57 patients (66.7%). Etiological workup highlighted 9 embolic heart disease (atrial fibrillation in 4, paradoxical embolism in 2, valvular heart disease in 2, myocarditis in 1), 7 atheromatous stenosis, 1 cerebral small vessel disease, 1 intracranial vasculopathy and 1 carotid artery dissection.

In encephalitis patients, CSF examination demonstrated lymphocytic pleiocytosis from 6 to 77 WBC/mm<sup>3</sup> in 14/21 patients (66.7%) and positive SARS-CoV-2 PCR in 2/20 (9.5%). Brain MRI showed heterogeneous acute non vascular lesion in 14/21 patients (66.7%), listed in table 3. Four patients (19.0%) also had small ischemic lesion or microhemorrhages. In CAE patients, 57/67 had brain imaging (85.1%) showing nine with acute lesions, mostly small ischemic ones (table 3).

Electroencephalogram was performed in 15/21 encephalitis patients (71.4%) and 32/67 CAE patients (47.8%). The proportion of the different patterns among the two groups was very close (table 3) with 55% of non-specific diffuse slowing (n=26/47), 15% of anterior slowing (n=7/47), 26% of focal lateralized abnormalities (n=12/47) and 9% of periodic pattern (n=4/47).

In patients with GBS, CSF examination demonstrated isolated elevated proteins in 8/14 patients (57.1%), ranging from 0.49 to 2.36 g/L, and negative SARS-CoV-2 PCR in the 9 patients tested. One patient had mild lymphocytic pleiocytosis with 12 WBC/mm<sup>3</sup>. Electroneuromyography was abnormal in 13/14 patients (92.9), suggestive of demyelination in all of them.

### ***Outcome (table 2)***

In encephalitis, 10/21 patients (47.6%) fully recovered, 3 of whom received corticosteroids (CS). In patients with persistent neurological symptoms (10/21, 47.6%) one received CS and another intravenous immunoglobulins (IVIg).

In CAE, 34/67 patients (50.7%) recovered spontaneously. Two patients received corticosteroids with partial improvement.

Most patients with GBS were treated with IVIg for 14/15 (93.3%). Two of them required mechanical ventilation.

The mortality rate during follow-up was 15.8% in AICS patients, 14.9% in CAE patients, 4.8% in encephalitis patients, 0% in GBS patients. To note, among the 18 patients with toxic metabolic encephalopathy who had been excluded from the CAE group, five deaths occurred (27.8%).

### **Other neurological manifestations associated with COVID-19**

Fifty patients had neurological manifestations that did not fulfill criteria for AICS, encephalitis, CAE or GBS, nor were they related to intensive care complications or metabolic or toxic encephalopathy. These neurological manifestations were very heterogeneous (Figure 1, Table 4).

#### ***Acute benign lymphocytic meningitis***

Three young patients, with a median age of 20 years (IQR 19-35), had acute benign lymphocytic meningitis in a context of mild or moderate COVID-19 disease. CSF examination demonstrated lymphocytic pleiocytosis from 12 to 102 WBC/mm<sup>3</sup>, a normal protein level and negative SARS-CoV-2 PCR in the two samples that were tested.

#### ***Non ischemic strokes***

Five patients had ICH. Three of them had deep ICH with a history of chronic arterial hypertension. Another patient had lobar ICH with no evidence of an underlying vascular malformation or tumor after extensive work-up including brain MRI and cerebral angiography. The last patient had multiple lobar ICH in a context of severe COVID-19 disease with acute kidney injury and hemolytic anemia. Two out of the five patients with ICH (40%) died. One patient had CVT revealed by a large parenchymal hematoma and a fulminant intracranial hypertension, causing death within a few days.

#### ***Peripheral neuropathy***

Two patients had oculomotor nerve palsy and one had facial peripheral nerve palsy with spontaneous clinical improvement in most cases (2/3, 66.7%) and no evidence for an underlying acute inflammatory demyelinating neuropathy. One patient had bilateral fibular palsy with an asymmetrical motor predominant neuropathy of undetermined mechanism.

#### ***Isolated seizure and transient alteration of consciousness***

Eight patients had isolated de novo seizure and five had transient alteration of consciousness, with resolution of symptoms in less than 24 hours and no other encephalopathic features. Semeiology of seizure were as follows: generalized tonic-clonic seizure (n=6), focal motor seizure (n=1), focal non-motor seizure with chewing movement (n=1). One patient experienced recurrence of generalized seizure after 24 hours and required long term antiepileptic medication, with etiological negative work-up.

#### ***Focal acute demyelinating lesion***

Two young women with no medical history revealed multiple sclerosis with an acute demyelinating MRI lesion, optic neuritis in one and cerebellar peduncle active lesion in one, with several old lesions.

#### ***Other rare neurological manifestations***

One patient had paraparesis of undetermined mechanism, with no evidence for myelitis on spine MRI and no evidence for Guillain-Barré syndrome on CSF examination and electroneuromyography.

Another patient had generalized myoclonus with cerebellar ataxia. Brain MRI revealed no significant abnormalities and CSF examination was not available. He improved partially without any treatment.

#### ***Mixed symptoms of unclassified mechanisms***

Fifteen patients (6.8%) had different combinations of nonspecific symptoms such as headache or dizziness, that could be associated with anosmia or hiccups. Most patients (12/15, 80%) had mild or moderate COVID-19 disease. Neurological symptoms appeared early in the evolution of the disease as they were inaugural for 5 patients and appeared in a median delay of 3 days for the others.

## DISCUSSION

To our knowledge, this is one of the largest series of COVID-19 patients with neurological manifestations. It provides detailed data about clinical and diagnostic aspects including short-term prognosis. Our results highlighted the broad spectrum of neurological manifestations associated with SARS-CoV-2 infection, and identified some major trends. The majority of neurological manifestations were CAE (67/222, 30%), AICS (57/222, 26%), encephalitis (21/222, 10%), and GBS (15/222, 7%). Neurological manifestations appeared after first COVID-19 symptoms with a median delay of 6 days in CAE, 7 days in encephalitis, 12 days in AICS and 18 days in GBS. Around 25% of CAE and AICS were inaugural and 30% of CAE and encephalitis were diagnosed after discontinuation of sedation. A combination of nonspecific symptoms such as headache or dizziness, not related to another neurological disease, were reported in 7% of the patients (15/222) and appeared early in the course of COVID-19. With a median delay of follow-up of 24 days, our registry highlighted a high rate of short-term mortality in COVID-19 patients with CAE and AICS, around 15% (19/124). The other reported fatal cases concerned five patients with metabolic-toxic encephalopathy, two patients with ICH, one patient with CVT and one patient with encephalitis.

Altered mental status was the most common neurological symptom reported in 52% of patients in our registry. Several cohorts of hospitalized patients with COVID-19 have shown a significant proportion of impaired consciousness on admission, ranging from 7.5 to 20%<sup>1,3,4,8</sup>. The classification and description of these patients in our registry highlight different possible pathogenic pathways. Indeed, patients with altered mental status may have encephalitis, in presence of meningitis and/or a compatible lesion on cerebral MRI. Encephalitis represented up to 10% of patients in our registry and they were more likely to have focal neurological signs and abnormal movements compared to patients with CAE. The aspects of brain MRI were very heterogeneous, consistent with the few published cases of encephalitis: white matter lesion and / or basal ganglia and thalami involvement suggestive of

acute disseminated encephalomyelitis<sup>9</sup> or acute necrotizing encephalopathy<sup>10-12</sup>, other nonspecific diffuse involvement of white matter<sup>13,14</sup>, mesio-temporal lesion<sup>8,15</sup> with possible frontoinsular extension, leptomeningeal abnormalities<sup>4</sup> and brainstem lesions<sup>16</sup>. Cases with unremarkable MRI have also been published<sup>17,18</sup>. Only two patients in our registry had a positive SARS-CoV-2 PCR in the CSF. In line with our data, only two encephalitis with positive SARS-CoV-2 PCR in CSF have been reported by the time of writing<sup>9,15</sup>. In our series the short-term outcome was generally favorable without any specific treatment. All of these elements suggest rather a para-infectious mechanism than a direct neuropathogenicity of the virus, but neuropathological studies remain scarce. In a recent autopsy study of six patients who died from COVID-19, Von Weyhern and al<sup>19</sup> highlighted the presence of lymphocytic panencephalitis and meningitis, but whether the observed lesions were a direct consequence of virus infiltration or resulted from an immune response could not be established. Another published case documented the presence of SARS-CoV-2 in endothelial and neural cells of frontal lobe sections<sup>20</sup> in a patient with negative SARS-CoV-2 PCR in postmortem CSF sample. This raises the question of the sensitivity of SARS-CoV-2 PCR testing in CSF, currently unknown. In addition, twenty percent of patients with encephalitis in our series demonstrated microvascular lesions on brain MRI, suggesting potential implication of a COVID-19 associated endotheliitis<sup>21,22</sup> or coagulopathy<sup>23</sup>. In the autopsy study of Von Weyhern and al<sup>19</sup>, diffuse petechial brain hemorrhages were associated with encephalitic pathological features, with no conspicuous endotheliitis.

Another autopsy study<sup>24</sup> demonstrated the presence of acute hypoxic injury in the cerebrum and cerebellum with no thrombi, encephalitis or vasculitis, and no cytoplasmic viral staining. This study concerned 18 patients having encephalopathic features associated with fatal COVID-19 disease. In our registry, we described a group of 67 patients with CAE, defined by persistent confusional state without encephalitis criteria or obvious toxic-metabolic coexisting factor. CAE patients had more severe forms of COVID-19, as previously shown in other studies<sup>3,8</sup>, with one third of them exhibiting delirium after intensive care management when sedation was withdrawn. Helms et al described the same course in 67% of patients with COVID-19 related ARDS<sup>4</sup>. We can therefore hypothesize that COVID-induced

sepsis<sup>25</sup> may lead to a septic-associated encephalopathy (SAE). There are indeed many points suggestive of SAE in our CAE patients: age, previous cognitive impairment, illness severity, focal deficit and seizures, tremor, myoclonus and acute vascular lesion on brain MRI<sup>26</sup>. SAE can also induce posterior reversible encephalopathy syndrome<sup>27</sup> which has not been reported in our registry but some cases have been published in COVID-19 patients<sup>8,28</sup>. The release of pro-inflammatory cytokines is one of the key pathogenic pathways suggested in SAE, and is thought to play a central role in severe COVID-19<sup>29</sup>. The cytokine storm is also one of the possible pathogenic pathways in mild encephalopathy with reversible splenial lesion syndrome, that is described in one patient in our registry and in one patient in the literature<sup>30</sup>.

In patients with encephalitis and CAE, electroencephalographic features were relatively close and mainly consisted of a nonspecific generalized background slowing, indicating diffuse cerebral dysfunction. Some published cases suggested a more specific pattern in COVID-19 patients, showing in frontal areas the presence of monomorphic biphasic delta slow waves with a periodic organization<sup>31,32</sup>. Our study found only 15% of anterior slowing and 9% of periodic pattern in patients with encephalitis and CAE.

AICS was the second most common manifestation in our series, accounting for 26% of patients. Although 75% of AICS patients had vascular comorbidities, our study highlights some features for which there is growing evidence in other published series: high prevalence of large vessels stroke<sup>33,34</sup>, multi-territory involvement<sup>34</sup>, undetermined etiology<sup>35</sup>, and high mortality rate<sup>35</sup>. COVID-related coagulopathy<sup>23</sup> probably plays a decisive role in these thrombotic cryptogenic ischemic strokes. AICS was not associated with particularly severe manifestations of COVID-19 in our series, contrary to what Mao et al<sup>3</sup> had suggested.

GBS represented approximately 7% of patients in the registry, and occurred with a median delay of 18 days after the first manifestations of COVID-19. Several cases and case series are currently reported in the literature<sup>36-41</sup> and an Italian study has demonstrated that the incidence of GBS increased in their

region during the COVID-19 epidemics compared with the three previous years<sup>42</sup>. No Miller Fisher syndrome case has been reported in our registry, and published cases are few and far between<sup>43,44</sup>.

Patients with mixed manifestations of undetermined mechanisms such as headache, dizziness, subjective sensitive signs and anosmia have been reported to our registry in about 7% of patients. Headache and dizziness are frequently reported in cohorts of COVID-19 patients, ranging from 8 to 14% and 6 to 17% respectively<sup>1,3,8</sup>. Anosmia was present in 3% of our patients and in about 5% in other series of hospitalized COVID-19 patients<sup>3,8</sup> whereas its prevalence reached 86% in a dedicated European multicentric study<sup>45</sup>. In our cohort that mainly involved hospitalized patients, these symptoms may have been underreported.

The other neurological manifestations reported in our registry are much rarer in occurrence and would require larger studies to be appropriately described. We report three cases of acute benign lymphocytic meningitis, which has not been reported in association with COVID-19 to date. We also report two patients with Tapia syndrome, a rare complication of orotracheal intubation, with one similar case recently published<sup>46</sup>.

Our study has some limitations. First, this is a retrospective registry with inherent reporting biases, which should lead us to interpret with caution the different proportions of neurological manifestations. Headache, dizziness and anosmia were not particularly frequent in our registry, probably underreported and/or associated with milder forms of COVID-19 disease. Secondly, the data are entirely descriptive and based on the report at a definite time period during the French outbreak. We used a deliberately simplified CRF given the exceptional working load of medical teams, whose first mission during the outbreak was the management of patients. There was therefore no exhaustive collection of medical history other than neurological comorbidities and vascular comorbidities for AICS, nor of biological parameters. The main objective was to provide a wide overview of neurological manifestations associated with SARS-CoV-2 infection. The analysis of the mechanisms



and potential risk factors for nervous system involvement in COVID-19 is therefore limited. Further studies are necessary to clarify these points.

## **CONCLUSION**

Our study highlights the broad spectrum of neurological manifestations associated with SARS-CoV-2 infection, probably related to different pathogenic pathways. Although encephalopathies were the most frequently reported manifestation, possibly linked to sepsis and cytokine storm, encephalitis was described in 10% of cases. However, we found few arguments to support the hypothesis of direct SARS-CoV-2 neuropathogenicity: a large majority of SARS-CoV-2 PCR in cerebrospinal fluid (73/75, 97.3%) were negative, and the short-term outcome of patients with encephalitis was generally favorable. Ischemic strokes were also frequently reported, as well as GBS, which occurred later in the course of the disease (18 days as compared to 7 days for encephalitis or 12 days for strokes). Other rare neurological manifestations such as meningitis or cranial neuropathy require comparison with other studies and registries to understand their potential link with SARS-CoV-2 infection.

## **ACKNOWLEDGEMENTS**

We acknowledge the support of the National College of General Hospital Neurologists (CNNHG), the French Society for Infectious Diseases (SPILF), the Association of French-Speaking Liberal

Neurologists (ANLLF), the Multiple Sclerosis French Society (SF-SEP), REACTing, a French multi-disciplinary collaborative network working on emerging infectious diseases, and the CoCo Neurosciences Study Group.

We acknowledge the support of Dr. Jérôme Aboab and the Clinical Research Unit of Saint-Denis for obtaining the approval of the national ethics committees.

Preliminary results of this work have been presented at the European Academy of Neurology (EAN) in May, 2020, by Pr. Elena MORO.

## AUTHOR CONTRIBUTIONS

Name	Location	Contribution
Elodie Meppiel M.D.	Department of Neurology, Centre Hospitalier de Saint-Denis, France	Substantial contributions to conception, design, acquisition, analysis, interpretation of data. Drafting or revising the manuscript for intellectual content.
Nathan Peiffer-Smadja M.D.	Department of Infectious Diseases, Bichat-Claude Bernard Hospital, Paris, France	Substantial contributions to acquisition, analysis, interpretation of data. Drafting or revising the manuscript for intellectual content.
Alexandra Maury	Department of Neurology, Centre Hospitalier de Saint-Denis, Saint-Denis, France	Substantial contributions to acquisition of data
Imen Bekri M.D.	Department of Neurology, Centre Hospitalier de Versailles, Le Chesnay, France	Substantial contributions to acquisition of data
Cécile Delorme M.D.	Department of Neurology, Pitié-Salpêtrière Hospital, Paris, France	Substantial contributions to acquisition of data. Drafting or revising the manuscript for intellectual content.
Virginie Desestret M.D., Ph.D.	Department of Neuro-cognition and Neuro-ophthalmology, Hospices Civils de Lyon, France	Substantial contributions to acquisition of data. Drafting or revising the manuscript for intellectual content.
Lucas Gorza M.D.	Department of Neurology, Hôpital Foch, Suresnes, France	Substantial contributions to acquisition of data
Geoffroy Hauteclouque-Raysz M.D.	Department of Neurology, Hôpitaux civils de Colmar, France	Substantial contributions to acquisition of data

Sophie Landre, M.S.	Department of Infectious Diseases, Hospices Civils de Lyon, France	Substantial contributions to acquisition of data
Annie Lannuzel M.D. Ph.D	Department of Neurology, Centre Hospitalier Universitaire de la Guadeloupe, France	Substantial contributions to acquisition of data.
Solène Moulin M.D. Ph.D.	Department of Neurology, Centre Hospitalier Universitaire, Hôpital Maison Blanche, Reims, France	Substantial contributions to acquisition of data. Drafting or revising the manuscript for intellectual content.
Peggy Perrin M.D.	Department of Nephrology, Hôpitaux Universitaires de Strasbourg, France	Substantial contributions to acquisition of data.
Paul Petitgas	Department of Infectious Diseases and Intensive Care Medicine, Centre Hospitalier Universitaire de Rennes, France	Substantial contributions to acquisition of data.
François Sellal M.D.	Department of Neurology, Hôpitaux civils de Colmar, France	Substantial contributions to acquisition of data. Drafting or revising the manuscript for intellectual content.
Adrien Wang M.D.	Department of Neurology, Hôpital Foch, Suresnes, France	Substantial contributions to acquisition of data. Drafting or revising the manuscript for intellectual content.
Pierre Tattevin M.D. Ph.D.	Department of Infectious Diseases and Intensive Care Medicine, Centre Hospitalier Universitaire de Rennes, France	Substantial contributions to acquisition of data. Drafting or revising the manuscript for intellectual content.
Thomas de Broucker M.D.	Department of Neurology, Centre Hospitalier de Saint-Denis, France	Substantial contributions to conception, design, acquisition, analysis, interpretation of data. Drafting or revising the manuscript for intellectual content.

## CONFLICTS OF INTEREST

Nothing to disclose for all authors

## REFERENCES

1. Chen N, Zhou M, Dong X, et al. Epidemiological and clinical characteristics of 99 cases of 2019 novel coronavirus pneumonia in Wuhan, China: a descriptive study. *The Lancet* 2020;395(10223):507–13.
2. Goyal P, Choi JJ, Pinheiro LC, et al. Clinical Characteristics of Covid-19 in New York City. *New England Journal of Medicine* 2020;0(0):null.
3. Mao L, Jin H, Wang M, et al. Neurologic Manifestations of Hospitalized Patients With Coronavirus Disease 2019 in Wuhan, China. *JAMA Neurol* [Internet] 2020 [cited 2020 May 6]; Available from: <https://jamanetwork.com/journals/jamaneurology/fullarticle/2764549>
4. Helms J, Kremer S, Merdji H, et al. Neurologic Features in Severe SARS-CoV-2 Infection. *N Engl J Med* 2020;NEJMc2008597.
5. Zubair AS, McAlpine LS, Gardin T, Farhadian S, Kuruvilla DE, Spudich S. Neuropathogenesis and Neurologic Manifestations of the Coronaviruses in the Age of Coronavirus Disease 2019: A Review. *JAMA Neurol* [Internet] 2020 [cited 2020 Jun 1]; Available from: <https://jamanetwork.com/journals/jamaneurology/fullarticle/2766766>
6. Management of COVID-19 | Coronavirus Disease COVID-19 [Internet]. COVID-19 Treatment Guidelines. [cited 2020 May 17]; Available from: <https://www.covid19treatmentguidelines.nih.gov/overview/management-of-covid-19/>
7. Asbury AK, Cornblath DR. Assessment of current diagnostic criteria for Guillain-Barré syndrome. *Ann Neurol* 1990;27(S1):S21–4.
8. Romero-Sánchez CM, Díaz-Maroto I, Fernández-Díaz E, et al. Neurologic manifestations in hospitalized patients with COVID-19: The ALBACOVID registry. *Neurology* 2020;10.1212/WNL.0000000000009937.
9. Novi G, Rossi T, Pedemonte E, et al. Acute disseminated encephalomyelitis after SARS-CoV-2 infection. *Neurol Neuroimmunol Neuroinflamm* 2020;7(5):e797.
10. Poyiadji N, Shahin G, Noujaim D, Stone M, Patel S, Griffith B. COVID-19–associated Acute Hemorrhagic Necrotizing Encephalopathy: CT and MRI Features. *Radiology* 2020;201187.
11. Dixon L, Varley J, Gontsarova A, et al. COVID-19-related acute necrotizing encephalopathy with brain stem involvement in a patient with aplastic anemia. *Neurol Neuroimmunol Neuroinflamm* 2020;7(5):e789.
12. Virhammar J, Kumlien E, Fällmar D, et al. Acute necrotizing encephalopathy with SARS-CoV-2 RNA confirmed in cerebrospinal fluid. *Neurology* 2020;10.1212/WNL.0000000000010250.
13. Kandemirli SG, Dogan L, Sarikaya ZT, et al. Brain MRI Findings in Patients in the Intensive Care Unit with COVID-19 Infection. *Radiology* 2020;201697.
14. Brun G, Hak J-F, Coze S, et al. COVID-19—White matter and globus pallidum lesions: Demyelination or small-vessel vasculitis? *Neurol Neuroimmunol Neuroinflamm* 2020;7(4):e777.
15. Moriguchi T, Harii N, Goto J, et al. A first case of meningitis/encephalitis associated with SARS-Coronavirus-2. *International Journal of Infectious Diseases* 2020;94:55–8.
16. Wong PF, Craik S, Newman P, et al. Lessons of the month 1: A case of rhombencephalitis as a rare complication of acute COVID-19 infection. *Clin Med (Lond)* 2020;

17. Bernard-Valnet R, Pizzarotti B, Anichini A, et al. Two patients with acute meningo-encephalitis concomitant to SARS-CoV-2 infection. *Eur J Neurol* 2020;
18. Pilotto A, Odolini S, Masciocchi S, et al. Steroid-Responsive Encephalitis in Coronavirus Disease 2019. *Annals of Neurology* [Internet] [cited 2020 Jun 29];n/a(n/a). Available from: <https://onlinelibrary.wiley.com/doi/abs/10.1002/ana.25783>
19. von Weyhern CH, Kaufmann I, Neff F, Kremer M. Early evidence of pronounced brain involvement in fatal COVID-19 outcomes. *The Lancet* 2020;S0140673620312824.
20. Paniz-Mondolfi A, Bryce C, Grimes Z, et al. Central nervous system involvement by severe acute respiratory syndrome coronavirus-2 (SARS-CoV-2). *Journal of Medical Virology* 2020;92(7):699–702.
21. Varga Z, Flammer AJ, Steiger P, et al. Endothelial cell infection and endotheliitis in COVID-19. *Lancet* 2020;395(10234):1417–8.
22. Hanafi R, Outteryck O. COVID-19 Neurologic Complication with CNS Vasculitis-Like Pattern. :4.
23. Tang N, Li D, Wang X, Sun Z. Abnormal coagulation parameters are associated with poor prognosis in patients with novel coronavirus pneumonia. *J Thromb Haemost* 2020;18(4):844–7.
24. Solomon IH, Normandin E, Bhattacharyya S, et al. Neuropathological Features of Covid-19. *N Engl J Med* 2020;NEJMc2019373.
25. Li H, Liu L, Zhang D, et al. SARS-CoV-2 and viral sepsis: observations and hypotheses. *The Lancet* 2020;395(10235):1517–20.
26. Mazeraud A, Righy C, Bouchereau E, Benghanem S, Bozza FA, Sharshar T. Septic-Associated Encephalopathy: a Comprehensive Review. *Neurotherapeutics* [Internet] 2020 [cited 2020 May 23];Available from: <http://link.springer.com/10.1007/s13311-020-00862-1>
27. Racchiusa S, Mormina E, Ax A, Musumeci O, Longo M, Granata F. Posterior reversible encephalopathy syndrome (PRES) and infection: a systematic review of the literature. *Neurol Sci* 2019;40(5):915–22.
28. Franceschi AM, Ahmed O, Giliberto L, Castillo M. Hemorrhagic Posterior Reversible Encephalopathy Syndrome as a Manifestation of COVID-19 Infection. *American Journal of Neuroradiology* [Internet] 2020 [cited 2020 Jun 1];Available from: <http://www.ajnr.org/content/early/2020/05/21/ajnr.A6595>
29. Moore JB, June CH. Cytokine release syndrome in severe COVID-19. *Science* 2020;368(6490):473–4.
30. Hayashi M, Sahashi Y, Baba Y, Okura H, Shimohata T. COVID-19-associated mild encephalitis/encephalopathy with a reversible splenial lesion. *J Neurol Sci* 2020;415:116941.
31. Vellieux G, Rouvel-Talleg A, Jaquet P, Grinea A, Sonnevill R, d'Ortho M-P. COVID-19 associated encephalopathy: Is there a specific EEG pattern? *Clinical Neurophysiology* 2020;131(8):1928–30.
32. Vespignani H, Colas D, Lavin BS, et al. Report of EEG Finding on Critically Ill Patients with COVID-19. *Ann Neurol* 2020;ana.25814.

33. Oxley TJ, Mocco J, Majidi S, et al. Large-Vessel Stroke as a Presenting Feature of Covid-19 in the Young. *N Engl J Med* 2020;e60.
34. Beyrouti R, Adams ME, Benjamin L, et al. Characteristics of ischaemic stroke associated with COVID-19. *J Neurol Neurosurg Psychiatry* 2020;jnnp-2020-323586.
35. Yaghi S, Ishida K, Torres J, et al. SARS2-CoV-2 and Stroke in a New York Healthcare System. *Stroke* 2020;STROKEAHA120030335.
36. Toscano G, Palmerini F, Ravaglia S, et al. Guillain-Barré Syndrome Associated with SARS-CoV-2. *N Engl J Med* 2020;NEJMc2009191.
37. Zhao H, Shen D, Zhou H, Liu J, Chen S. Guillain-Barré syndrome associated with SARS-CoV-2 infection: causality or coincidence? *The Lancet Neurology* 2020;19(5):383–4.
38. Padroni M, Mastrangelo V, Asioli GM, et al. Guillain-Barré syndrome following COVID-19: new infection, old complication? *J Neurol* [Internet] 2020 [cited 2020 May 6]; Available from: <http://link.springer.com/10.1007/s00415-020-09849-6>
39. Pfefferkorn T, Dabitz R, von Wernitz-Keibel T, Aufenanger J, Nowak-Machen M, Janssen H. Acute polyradiculoneuritis with locked-in syndrome in a patient with Covid-19. *J Neurol* 2020;
40. Alberti P, Beretta S, Piatti M, et al. Guillain-Barré syndrome related to COVID-19 infection. *Neurol Neuroimmunol Neuroinflamm* 2020;7(4):e741.
41. Bigaut K, Mallaret M, Baloglu S, et al. Guillain-Barré syndrome related to SARS-CoV-2 infection. *Neurol Neuroimmunol Neuroinflamm* 2020;7(5):e785.
42. Gigli GL, Bax F, Marini A, et al. Guillain-Barré syndrome in the COVID-19 era: just an occasional cluster? *J Neurol* 2020;
43. Dinkin M, Gao V, Kahan J, et al. COVID-19 presenting with ophthalmoparesis from cranial nerve palsy. *Neurology* 2020;
44. Gutiérrez-Ortiz C, Méndez A, Rodrigo-Rey S, et al. Miller Fisher Syndrome and polyneuritis cranialis in COVID-19. *Neurology* 2020;10.1212/WNL.0000000000009619.
45. Lechien JR, Chiesa-Estomba CM, De Siati DR, et al. Olfactory and gustatory dysfunctions as a clinical presentation of mild-to-moderate forms of the coronavirus disease (COVID-19): a multicenter European study. *Eur Arch Otorhinolaryngol* 2020;
46. Decavel P, Petit C, Tatu L. Tapia syndrome at the time of the COVID-19 pandemic: Lower cranial neuropathy following prolonged intubation. *Neurology* 2020;

**Figure 1. Study population of COVID-19 patients with neurological manifestations**

**Table 1. General characteristics of 222 COVID-19 patients with neurological manifestations**

	<b>Total</b> <b>N=222</b>
<b>Age, median (IQR), year</b>	65 (53-72)
<b>Male, n (%)</b>	136 (61.3)
<b>Neurological comorbidities, n (%)</b>	47 (21.2)
Prior stroke	20 (9.0)
Neurodegenerative disease	17 (7.7)
Epilepsy	5 (2.3)
Other	5 (2.3)
<b>Diagnosis of COVID-19, n (%)</b>	
Positive SARS-CoV-2 nasopharyngeal PCR	192 (86.5)
Positive SARS-CoV-2 serology	4 (1.8)
Typical clinical course and chest CT	26 (11.7)
<b>Severity of COVID-19, n (%) *</b>	
Mild	55 (24.8)
Moderate	65 (29.3)
Severe	46 (20.7)
Critical	56 (25.2)
<b>Neurological manifestations occurrence</b>	
Inaugural neurological manifestation, n (%)	45 (20.3)
Neurological manifestation occurring after first COVID-19 symptoms, n (%)	141 (63.5)
Time between first symptoms and neurological manifestation, median (IQR), day	7 (1-12)
Neurological manifestation after withholding sedation in ICU, n (%)	36 (16.2)
<b>Neurological symptoms, n (%)</b>	
Headache	24 (10.8)

Dizziness	5 (2.3)
Altered mental status	117 (52.4)
Seizure	21 (9.5)
Focal central neurological symptoms	97 (43.7)
Movement disorder	8 (3.6)
Peripheral limb weakness	26 (11.7)
Cranial neuropathy	10 (4.5)
Anosmia	7 (3.2)
Ageusia	4 (1.8)
<b>Neurological work-up, n (%)</b>	<b>205 (92.3)</b>
Brain imaging	192 (86.5)
Brain MRI	157 (70.7)
Brain CT-scan	35 (15.8)
Presence of acute lesion, n/n tot (%)	85/192 (44.3)
Spine MRI	6 (2.7)
Cerebrospinal fluid examination	97 (43.7)
WBC count > 5/mm <sup>3</sup> , n/n tot (%)	18/97 (18.6%)
SARS-CoV-2 PCR in cerebrospinal fluid	75 (33.8)
Positive, n/tot n (%)	2/75 (2.7)
Electroencephalogram	74 (33.3)
Electroneuromyography	19 (8.6)
<b>Follow-up, median (IQR), day</b>	<b>24 (17-34)</b>
<b>Death, n (%)</b>	<b>28 (12.6)</b>
Acute Respiratory Distress Syndrome	17 (7.7)
Stroke	5 (2.3)
Other	6 (2.7)

\* according to the National Institute of Health guidelines

ICU: intensive care unit; IQR: interquartile range; MRI: magnetic resonance imaging; WBC: white blood cell



**Table 2. Baseline and clinical characteristics of COVID-19 patients with acute ischemic cerebrovascular syndrome, encephalopathy, encephalitis, and Guillain-Barré Syndrome**

	<b>Acute ischemic cerebrovascular syndrome (n=57)</b>	<b>Encephalitis (n=21)</b>	<b>COVID associated encephalopathy (n=67)</b>	<b>Guillain-Barré Syndrome (n=15)</b>
Age, median (IQR), year	65 (55-78)	67 (51-70)	68 (61-75)	59 (53-65)
Male, n (%)	34 (59.6)	15 (71.4)	41 (60.3)	13 (86.7)
<b>Medical history, n (%)</b>				
Prior stroke, n (%)	8 (14.0)	0 (0)	4 (6.0)	1 (6.7)
Neurodegenerative disease, n (%)	1 (1.8)	1 (4.8)	20 (29.9)	0 (0)
Vascular comorbidities, n (%) *	43 (75.4)	N/A*	N/A*	N/A*
<b>Severity of COVID-19, n (%)</b>				
Mild	21 (36.8)	4 (19)	6 (9.0)	7 (46.7)
Moderate	16 (28.1)	7 (33.3)	16 (23.9)	3 (20.0)
Severe	13 (22.8)	3 (14.3)	17 (25.4)	1 (6.7)
Critical	7 (12.3)	7 (33.3)	29 (43.3)	4 (26.7)
<b>Neurological manifestations occurrence</b>				
Inaugural neurological manifestation, n (%)	14 (24.6)	1 (4.8)	15 (22.4)	0 (0)
Neurological manifestation occurring after first COVID-19 symptoms, n (%)	40 (70.2)	14 (66.7)	32 (47.8)	12 (80.0)
Time between first symptoms and neurological manifestation, median (IQR), day	12 (7-18)	7 (5-10)	6 (3-8)	18 (15-28)
Neurological manifestation after withholding sedation in ICU, n (%)	3 (5.3)	6 (28.6)	20 (29.9)	3 (20.0)

<b>Neurological symptoms, n (%)</b>				
Headache	2 (3.5)	3 (14.3)	6 (9.0)	0 (0)
Altered mental status	8 (14.0)	21 (100)	67 (100)	3 (20.0)
Seizure	1 (1.8)	2 (9.5)	7 (10.4)	0 (0)
Focal central neurological symptoms	56 (98.2)	12 (57.1)	13 (19.4)	2 (13.3)
Motor or sensitive deficit	42 (73.7%)	2 (9.5)	1 (1.5)	1 (6.7)
Cerebellar ataxia	6 (10.5%)	6 (28.6)	9 (13.4)	0 (0)
Pyramidal syndrome	N/A	6 (28.6)	4 (6.0)	0 (0)
Central oculomotor syndrome	6 (10.5%)	1 (4.8)	1 (1.5)	1 (6.7)
Movement disorder	0 (0)	6 (28.6)	3 (4.5)	1 (6.7)
Peripheral limb weakness	1 (1.8)	2 (9.5)	7 (10.4)	11 (73.3)
Cranial neuropathy	0 (0)	1 (4.8)	2 (3.0)	4 (26.7)
<b>Follow-up, median (IQR), day</b>	24 (16-32)	21 (18-29)	28 (19-37)	18 (14-29)
<b>Resolution of neurological symptoms, n (%)</b>	21 (36.8)	10 (47.6)	34 (50.7)	1 (6.7)
<b>Death, n (%)</b>	9 (15.8)	1 (4.8)	10 (14.9)	0 (0)

\* Vascular comorbidities only collected for stroke patients. Data collected including hypertension, diabetes, obesity and cardiovascular diseases.

ICU: intensive care unit; IQR: interquartile range

**Table 3. Neurological workup in COVID-19 patients with acute ischemic cerebrovascular syndrome, encephalitis, encephalopathy, and Guillain-Barré Syndrome**

	<b>Acute ischemic cerebrovascular syndrome (n=57)</b>	<b>Encephalitis (n=21)</b>	<b>Encephalopathy (n=67)</b>	<b>Guillain-Barré Syndrome (n=15)</b>
<b>Brain imaging, n (%)</b>	57 (100)	21 (100)	57 (85.1)	5 (33.3)
CT scan	9 (15.8)	0 (0)	12 (17.9)	0 (0)
MRI	48 (84.2)	21 (100)	45 (67.2)	5 (33.3)
Acute lesion	52 (91.7)	15 (71.4)	9/57 (15.8)	2/5 (40.0)
Vascular acute lesion	52 (91.7)	4 (19.0)	8/57 (14.0)	2/5 (40.0)
Multi-territory ischemic lesions	13 (22.8)	2 (9.5)	6/57 (10.5)	1/5 (20.0)
Microhemorrhages	0 (0)	2 (9.5)	2/57 (3.5)	0/6 (0)
Large vessel thrombosis	16 (28.1)	0 (0)	0/57 (0)	0/6 (0)
Non vascular acute lesion	0 (0)	14 (66.7) *	1/57 (1.8) §	0/6 (0)
<b>Spine MRI, n (%)</b>	0 (0)	0 (0)	2 (3.0)	3 (20.0)
Acute lesion	-	-	0/2 (0)	0/3 (0)
<b>Cerebrospinal fluid examination, n (%)</b>	3 (5.2)	21 (100)	36 (53.7)	14 (93.3)
Normal	3 (100)	3/21 (14.3)	28/36 (77.8)	5/14 (35.7)
WBC count > 5/mm <sup>3</sup>	-	14/21 (66.7)	0/36 (0)	1/14 (7.1)
Proteins > 0.45 g/L	-	12/21 (57.1)	8/36 (22.2)	8/14 (57.1)
Isolated elevated proteins	-	4/21 (19.0)	8/36 (22.2)	8/14 (57.1)
Positive SARS-CoV-2 PCR	0/2 (0)	2/20 (9.5)	0/27 (0)	0/9 (0)
<b>Electroencephalogram, n (%)</b>	4 (7.0%)	15/21 (71.4)	32 (47.8)	2 (14.3)
Normal	0/4 (0)	1/15 (6.7)	6/32 (18.8)	0/2 (0)
Diffuse slowing	3/4 (75.0)	9/15 (60.0)	17/32 (53.1)	1/2 (50)
Anterior slowing	0/4 (0)	2/15 (13.3)	5/32 (15.6)	1/2 (50)

Focal lateralized slowing and/or paroxysm	1/4 (25.0)	4/15 (26.7)	8/32 (25.0)	0/2 (0)
Periodic pattern	0/4 (0)	1/15 (6.7)	3/32 (9.4)	0/2 (0)
Status epilepticus	0/4 (0)	1/15 (6.7)	1/32 (3.1)	0/2 (0)
<b>Electroneuromyography, n (%)</b>	1 (1.8)	1/15 (6.7)	3 (4.5)	14 (93.3)
Abnormal findings	1/1 (100)	1/1 (100)	3/3 (100)	13/14 (92.9)
Axonal injury	1/1 (100)	1/1 (100)	1/3 (33.3)	0/14 (0)
Demyelination	1/1 (100)	0/1 (0)	2/3 (66.7)	13/14 (92.9)

\* basal ganglia T2 hyperintensity (n=2), bilateral globus pallidus necrosis (n=1) acute white matter lesions (n=3),

mesiotemporal T2 hyperintensity (n=3) with fronto-insular extension in 2, brainstem and cerebellar peduncular

T2 hyperintensity (n=2), cranial nerve T2 hyperintensity (n=1), focal leptomeningeal T2 hyperintensity (n=2)

§ lesion in the splenium of corpus callosum typical of Mild Encephalopathy with Reversible Splenial Lesion

syndrome

ICU: intensive care unit; IQR: interquartile range; MRI: magnetic resonance imaging; WBC: white blood cell

**Table 4. Characteristics of COVID-19 patients with other neurological manifestations\***

	<b>Intracranial Hemorrhage (n=5)</b>	<b>Meningitis (n=3)</b>	<b>Isolated <i>de novo</i> seizure (n=8)</b>	<b>Transient alteration of consciousness (n=5)</b>	<b>Focal acute demyelinating lesion (n=2)</b>	<b>Isolated cranial neuropathy (n=3)</b>	<b>Unclassified manifestations (n=15)</b>
<b>Age, median (IQR), year</b>	69 (66-72)	20 (19-35)	57 (51-71)	67 (50-68)	28 (27-28)	55 (49-60)	41 (36-48)
<b>Male, n (%)</b>	3 (60.0)	0 (0)	4 (50)	3 (60)	0 (0)	0 (0)	8 (53.3)
<b>Severity of COVID-19, n (%)</b>							
Mild	1 (20)	1 (33.3)	3 (37.5)	0 (0)	2 (100)	1 (33.3)	9 (60.0)
Moderate	1 (20)	2 (66.7)	3 (37.5)	3 (60)	0 (0)	2 (66.7)	3 (20.0)
Severe	2 (40)	0 (0)	1 (12.5)	0 (0)	0 (0)	0 (0)	2 (13.3)
Critical	1 (20)	0 (0)	0 (0)	2 (40)	0 (0)	0 (0)	0 (0)
<b>Neurological manifestations occurrence</b>							
Inaugural neurological manifestation, n (%)	2 (40)	2 (66.7)	1 (12.5)	0 (0)	0 (0)	1 (33.3)	5 (33.3)
Neurological manifestation occurring after first COVID-19 symptoms, n (%)	2 (40)	1 (33.3)	5 (62.5)	4 (80)	2 (100)	2 (66.7)	10 (66.7)
Time between first symptoms and neurological manifestation, median	13 (9-16)	5	5 (4-6)	10 (7-13)	14 (7-20)	10 (7-13)	3 (1-5)

(IQR), day							
Neurological manifestation after withholding sedation in ICU, n (%)	1 (20)	0 (0)	0 (0)	1	0 (0)	0 (0)	0 (0)
<b>Neurological workup, n (%)</b>							
Brain MRI	4 (80)	2 (66.7)	7 (87.5)	2 (40)	2 (100)	3 (100)	8 (53.3)
Brain CT-scan	1 (20)	1 (33.3)	1 (12.5)	2 (40)	0 (0)	0 (0)	2 (13.3)
Spine MRI	0 (0)	0 (0)	0 (0)	0 (0)	0 (0)	0 (0)	1 (6.7)
Cerebrospinal fluid examination	0 (0)	3 (100)	2 (25)	2 (40)	1 (50)	2 (66.7)	5 (33.3)
Electroencephalogram	2 (40)	1 (33.3)	6 (75)	4 (80)	0 (0)	0 (0)	1 (6.7)
Electroneuromyography	0 (0)	0 (0)	0 (0)	0 (0)	0 (0)	1 (33.3)	0 (0)
<b>Follow-up, mean (IQR), day</b>	22 (14-25)	24 (17-31)	23 (16-38)	18 (18-19)	25 (24-26)	23 (22-34)	19 (17-40)
<b>Resolution of neurological symptoms, n (%)</b>	0 (0)	2 (66.7)	7 (87.5)	5 (100)	2 (100)	2 (66.7)	10 (66.7)
<b>Death, n (%)</b>	2 (40)	0 (0)	0 (0)	0 (0)	0 (0)	0 (0)	0 (0)

\* Other neurological manifestations that concerned 2 or more patients

ICU: intensive care unit; IQR: interquartile range; MRI: magnetic resonance imaging; WBC: white blood cell

## **Supplementary Appendix: contributors to the NeuroCOVID registry**

**ABGRALL Sophie**, Department of Internal Medicine, Hôpital Antoine Bécère, Assistance-Publique Hôpitaux de Paris, 92140 Clamart, France.

**ALBY-LAURENT Fanny**, Department of Infectious Diseases, Hôpital Necker-Enfants Malades Assistance-Publique Hôpitaux de Paris,, 75015 Paris, France

**ALLOU Thibault**, Department of Neurology, Hôpital Saint-Jean, 66046 Perpignan, France

**AMEVIGBE Joséphine**, Department of Neurology, Hôpital Simone Veil, 60000 Beauvais, France

**AMARGUPELLAY Hanifa** Department of Oncology and Radiotherapy, Hôpital Simone Veil, 60000 Beauvais, France

**ALLOUSSI Nabil**, Emergency Department, Hôpital privé Wallerstein, 33740 Arès, France

**BAILLE Guillaume**, Department of Neurology, Centre Hospitalier de Saint-Denis, Hôpital Delafontaine, F-93200 Saint-Denis, France

**BARBAZ Mathilde**, Department of Surgical Critical Care, Centre Hospitalier Universitaire Bretonneau, 37000 Tours, France

**BEKRI Imen**, Department of Neurology and Stroke Center, Centre Hospitalier de Versailles, 78150 Le Chesnay, France

**BENCHERIF Lamia**, Department of Neurology, Hôpital de Gonesse, 95500 Gonesse, France

**BENSAADI Samia**, Department of Psychiatry, Hôpital Ville-Evrard, 93332 Neuilly-sur-Marne, France

**BERAUD Guillaume**, Department of Infectious Diseases. Centre Hospitalier Universitaire de Poitiers, 86021 Poitiers, France

**BIZOT Alexandra**, Department of Oncology, Institut Gustave Roussy, 94800 Villejuif, France

**BOTTIN Laure**, Department of Neurology, Hôpital Saint-Antoine, Assistance-Publique Hôpitaux de Paris, 75012 Paris, France

**BRUNEEL Fabrice**, Department of Intensive Care Medicine, Centre Hospitalier de Versailles, 78150 Le Chesnay, France

**CAMDESSANCHE Jean-Philippe**, Department of Neurology, Hôpital Nord, Centre Hospitalier Universitaire de Saint-Étienne, 42055 Saint-Étienne

**CHAUFFIER Jeanne**, Department of Infectious Diseases, Bichat-Claude Bernard Hospital, Assistance-Publique Hôpitaux de Paris, 75018 Paris, France.

**CSAJAGHY Jean-Philippe**, Emergency Department, Centre Hospitalier du Haut-Anjou, 53200 Château-Gontier, France

**DE BROUCKER Chloé**, Department of Infectious Diseases, Bichat-Claude Bernard University Hospital, Assistance-Publique Hôpitaux de Paris, 75018 Paris, France.

**DE BROUCKER Thomas**, Department of Neurology, Centre Hospitalier de Saint-Denis, Hôpital Delafontaine, F-93200 Saint-Denis, France

**DEFEBVRE Luc**, Department of Neurology, Centre Hospitalier Universitaire de Lille, INSERM 1172, 59000 Lille, France

**DELORME Cécile**, Department of Neurology, Pitié-Salpêtrière Hospital, Assistance-Publique Hôpitaux de Paris, 75013 Paris, France

**DEMBLOQUE Elodie**, Departement of Obstetrics and Gynecology, Hôpital Simone Veil , 60000 Beauvais, France

**DERACHE Nathalie**, Departement of Neurology, Secretary of the French Society of Multiple Sclerosis (SFSEP), Centre Hospitalier Universitaire de Caen, 14000 Caen, France

**DEREEPER Olivier**, Department of Neurology, Centre Hospitalier de Calais, 62100 Calais, France

**DEROLLEZ Céline**, Department of Neurology. Centre Hospitalier Universitaire de Lille, 59000 Lille France

**DESCOTES-GENON Cécile**, Department of Infectious Diseases, Centre Hospitalier de Chambéry, 73000 Chambéry

**DESESTRET Virginie**, Department of Neuro-cognition and Neuro-ophthalmology, Hospices Civils de Lyon, Pierre Wertheimer Neurological Hospital, Lyon, France ; the University of Lyon, Claude Bernard Lyon 1 University, F-69000 Lyon, France

**DEVAUX Mathilde**, Department of Internal Medicine, Centre Hospitalier de Poissy Saint Germain en Laye, 78300 Poissy, France

**DUBUC Lydie**, Department of Neurology, Centre Hospitalier Mémorial, 50000, Saint-Lô, France

**EDAN Gilles**, Department of Neurology, Centre Hospitalier Universitaire de Rennes, Hôpital Pontchaillou, 35000 Rennes, France

**FICKL Andréa**, Department of Neurology, Centre Hospitalier Mulhouse, 68100 Mulhouse, France

**FRAISSE Thibault**, Department of Geriatric Medicine, Hôpital Alès-Cévennes, 30103 Alès, France

**GUGENHEIM Michel**, president of the Association of French-Speaking Liberal Neurologists (ANLLF), 78120 Rambouillet, France



**HANKIEWICZ Karolina**, Department of Neurology, Centre Hospitalier de Saint-Denis, Hôpital Delafontaine, F-93200 Saint-Denis, France

**HANSMANN Yves**, Department of Infectious Diseases, Hôpitaux Universitaires de Strasbourg, 67091 Strasbourg, France

**HAUTECLOQUE-RAYSZ Geoffroy**, Department of Neurology, Hôpitaux civils de Colmar, 68024 COLMAR, France

**HENRY Carole**, Department of Neurology, Centre Hospitalier de Saint-Denis, Hôpital Delafontaine, F-93200 Saint-Denis, France

**JOBARD Stéphanie**, Department of Internal Medicine and Clinical Immunology, Centre Hospitalier Universitaire Bretonneau, 37000 Tours, France

**JOUAN Fanny**, Department of Internal Medicine, Centre Hospitalier de Saint-Denis, Hôpital Delafontaine, F-93200 Saint-Denis, France

**KWIATKOWSKI Arnaud**, Department of Neurology, Hôpital St Vincent de Paul, 59000 Lille, France

**LALU Thibault**, Department of Neurology, Centre Hospitalier de Béziers, F-34500 Béziers France

**LANDRE Sophie**, Department of Infectious Diseases, Hospices Civils de Lyon; the University of Lyon, Claude Bernard Lyon 1 University, F-69000 Lyon, France

**LANNUZEL Annie**, Department of Neurology, Centre Hospitalier Universitaire de la Guadeloupe, Faculté de médecine de l'université des Antilles, Centre d'investigation clinique Antilles Guyane, Inserm CIC 1424, F-97100 Pointe-à-Pitre, France

**LEGUILLOUX Johan**, Department of Neurology, Hôpital Privé Nord Parisien, 95000 Sarcelles, France

**LEJEUNE Camille**, Department of Geriatric Medicine, Centre Hospitalier de Rouffach, 68250 Rouffach, France

**LIEGEOIS Clémence**, Department of Neurology, Centre Hospitalier Universitaire, Hôpital Maison Blanche, F-51092 Reims, France

**MAHY Sophie**, Department of Internal Medicine, Centre Hospitalier Universitaire Dijon Bourgogne, 21079 Dijon, France

**MAREY Jonathan**, Department of Pneumology, Hôpital Cochin, Assistance-Publique Hôpitaux de Paris, 75014 Paris, France

**MAURY Alexandra**, Department of Neurology, Centre Hospitalier de Saint-Denis, Hôpital Delafontaine, F-93200 Saint-Denis, France

**MEPPIEL Elodie**, Department of Neurology, Centre Hospitalier de Saint-Denis, Hôpital Delafontaine, F-93200 Saint-Denis, France

**MICHEL Laure**, Department of Neurology, Centre Hospitalier Universitaire de Rennes, Centre d'Investigation Clinique de Rennes (CIC Inserm 1414), 35033 Rennes, France

**MITRI Rita**, Department of Infectious Diseases, Centre Hospitalier de Saint-Denis, Hôpital Delafontaine, F-93200 Saint-Denis, France

**MOULIN Chloé**, Department of Infectious Diseases, Centre Hospitalier de Chambéry, 73000 Chambéry, France

**MOULIN Solène**, Department of Neurology, Centre Hospitalier Universitaire, Hôpital Maison Blanche, F-51092 Reims, France

**PEIFFER-SMADJA Nathan**, Department of Infectious Diseases, Bichat-Claude Bernard Hospital, Assistance-Publique Hôpitaux de Paris, Université de Paris, IAME, INSERM, 75018 Paris, France

**OMARJEE Asma**, Department of Neurology and Stroke Center, Centre Hospitalier de Versailles, 78150 Le Chesnay, France

**OZSANCAK Canan**, Department of Neurology, Centre Hospitalier Régional d'Orléans, 45000 Orléans, France

**PERRIN Peggy**, Department of Nephrology, Hôpitaux Universitaires de Strasbourg, 67091 Strasbourg, France

**PETITGAS Paul**, Department of Infectious Diseases and Intensive Care Medicine, Centre Hospitalier Universitaire de Rennes, 35000 Rennes, France

**PICO Fernando**, Department of Neurology and Stroke Center, Centre Hospitalier de Versailles, 78150 Le Chesnay, France

**POUPARD Marie**, Department of Infectious Diseases, Centre Hospitalier de Saint-Denis, Hôpital Delafontaine, F-93200 Saint-Denis, France

**RABIER Valérie**, Department of Infectious Diseases, Centre Hospitalier Universitaire d'Angers, 49000 Angers, France

**RIZZATO Camille**, Department of Neurology, Centre Hospitalier Chubert, 56000 Vannes France

**ROOS Caroline**, Emergency Headache Center, Hôpital Lariboisière, Assistance-Publique Hôpitaux de Paris, 75010 Paris, France

**SAISON Julien**, Department of Infectious Diseases, Centre Hospitalier de Valence, F-26000 Valence, France

**SAYRE Naomi**, Department of Infectious Diseases, Centre Hospitalier de Saint-Denis, Hôpital Delafontaine, F-93200 Saint-Denis, France

**SEDILLOT Nicolas**, Department of Intensive Care Medicine, Centre Hospitalier Fleyriat, 01012 Bourg-en-Bresse, France

**SELLAL François** Department of Neurology, Hôpitaux civils de Colmar, 68024 COLMAR, France

**SERVAN Jérôme**, Department of Neurology and Stroke Center, Centre Hospitalier de Versailles, 78150 Le Chesnay, France

**STOREY Caroline**, Department of Pediatric Endocrinology and Diabetology, Hôpital Robert-Debré, Assistance-Publique Hôpitaux de Paris, 75019 Paris, France

**SUCHET Laurent**, Department of Neurology, Hôpital Européen, 13003 Marseille, France

**TARTERET Paul**, Department of Infectious Diseases, Centre Hospitalier de Melun, 77000 Melun France

**TATTEVIN Pierre**, Department of Infectious Diseases and Intensive Care Medicine, Centre Hospitalier Universitaire de Rennes, 35000 Rennes, France

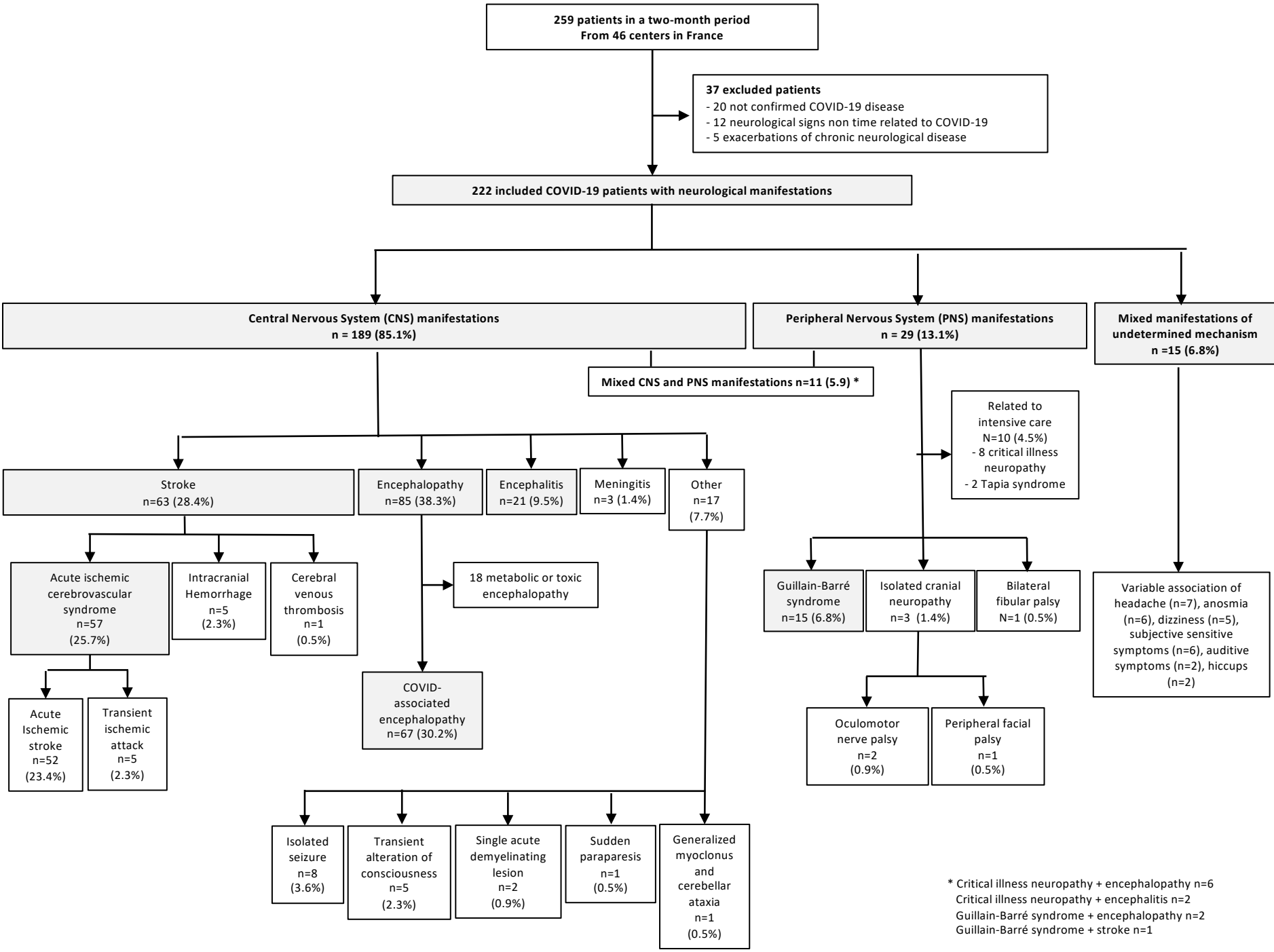
**THIEBAUT Mathilde** Department of Internal Medicine, Centre Hospitalier André Grégoire, 93100 Montreuil, France

**VADUVA Claudia** Department of Neurology, Hôpital Yves le Foll, 22027 Saint-Brieuc, France

**VARLAN David**, Department of Neurology, Centre Hospitalier de Saint-Denis, Hôpital Delafontaine, F-93200 Saint-Denis, France

**WANG Adrien** Department of Neurology, Hôpital Foch, 92151 Suresnes, France

**ZARROUK Virginie** Department of Internal Medicine, Hôpital Beaujon, Assistance-Publique Hôpitaux de Paris, 92110 Clichy, France



\* Critical illness neuropathy + encephalopathy n=6  
 Critical illness neuropathy + encephalitis n=2  
 Guillain-Barré syndrome + encephalopathy n=2  
 Guillain-Barré syndrome + stroke n=1