

Initial characterisation of ELISA assays and the immune response of the clinically correlated SARS-CoV-2 biobank “SERO-BL-COVID-19” collected during the pandemic onset in Switzerland

Hans-Michael Kaltenbach,^{a,1} Fabian Rudolf,^{a,b,1,*} Janina Linnik^a, Julia Deichmann^a, Therese Ruf^c, Raffaele Altamura^d, Edo Kapetanovic^d, Derek Mason^d, Bastian Wagner^d, Thomas Goetz^e, Lukas Mundorff^e, Karin Stoll-Rudin^c, Christina Krebs^c, Tanja Renz^e, Thomas Hochueli^f, Sergio Haymoz^f, Markus Hosch^g, Nadine Périat^g, Michèle Richert^g, Sergio Sesia^{h,i}, Daniel Paris^c, Carlos Beat Quinto^{c,g,j,k,l}, Nicole M. Probst-Hensch^c, Christoph Niederhauser^{n,o}, Sai Reddy^d, Beatrice Nickel^c, Miodrag Savic^{g,l,m,*}

^a*D-BSSE ETH Zürich & Swiss Institute of Bioinformatics, Mattenstrasse 26, 4056 Basel, Switzerland*

^b*Associated Member Cantonal Crisis Staff Basel-Landschaft, 4104 Liestal*

^c*Swiss Tropical and Public Health Institute, Socinstrasse 57, 4051 Basel*

^d*D-BSSE ETH Zürich, Mattenstrasse 26, 4056 Basel*

^e*Canton Basel-Landschaft Medical Association, 4104 Liestal*

^f*Office for Military Affairs and Civil Protection Canton Basel-Landschaft, 4104 Liestal*

^g*Department of Health, Economics and Health Directorate Canton Basel-Landschaft, 4104 Liestal*

^h*University of Berne, 3000 Berne*

ⁱ*University Hospital of Berne, 3000 Berne*

^j*Department of Public Health, Health Professions and Medicines, 4000 Basel*

^k*Swiss Medical Association*

^l*University of Basel, 4000 Basel*

^m*University Hospital of Basel, 4000 Basel*

ⁿ*Interregional Blood Transfusion SRC, 3000 Bern*

^o*Institute for Infectious Diseases, University of Bern, 3000 Bern*

Abstract

Background To accurately measure seroprevalance in the population, both

*correspondence should be addressed to fabian.rudolf@bsse.ethz.ch or miodrag.savic@usb.ch

¹these authors contributed equally

July 3, 2020

the expected immune response as well as the assay performances have to be well characterised. Here, we describe the collection and initial characterisation of a blood and saliva biobank obtained after the initial peak of the SARS-CoV-2 pandemic in Switzerland.

Methods Two laboratory ELISA assays measuring IgA & IgG (Euroimmun), and IgM & IgG (Epitope Diagnostics) were used to characterise the biobank collected from 349 re- and convalescent patients from the canton of Basel-Landschaft.

Findings The antibody response in terms of recognized epitopes is diverse, especially in oligosymptomatic patients, while the average strength of the antibody response of the population does correlate with the severity of the disease at each time point.

Interpretation The diverse immune response presents a challenge when conducting epidemiological studies as the used assays only detect ~90% of the oligosymptomatic cases. This problem cannot be rectified by using more sensitive assays or lower cut-offs as they concomitantly reduce specificity.

Funding Funding was obtained from the "Amt für Gesundheit" of the canton Basel-Landschaft, Switzerland.

Keywords: COVID-19, Serology, Biobank, Immune response, oligosymptomatic patients

1. Introduction

Effective host responses to viral infections, including those to coronaviruses, are driven by adaptive immunity [1]. For endemic or previously emerging coronaviruses, the antibody response has been correlated with protection from re-infection for a varying period of time. In SARS-CoV-2 infections, most studies on antibody kinetics are based on severe or hospitalized

7 patients, even though subclinical or even oligosymptomatic patients repre-
8 sent the majority of cases. Less severe cases of SARS-CoV-2 (as well as other
9 endemic CoVs) are associated with lower antibody responses, and therefore
10 pose a challenge for accurate detection using serological assays.

11 However, one of the most important correlates of immunological pro-
12 tection is the presence of neutralizing antibodies, which is preferably mea-
13 sured by using functional assays with replication competent virus [2]. For
14 COVID-19 patients, such assays are time consuming and must be conducted
15 in Biosafety Level 3 facilities, which renders them infeasible for wide-scale
16 testing. Some alternative functional assays are based on pseudotyped or
17 chimeric viral particles [3], but these reagents are neither trivial to produce
18 nor do they scale to large sample sizes. The most feasible alternative assays
19 are therefore binding assays, such as enzyme-linked immunosorbent assays
20 (ELISA), and preferably report on the quantity of antibodies binding to neu-
21 tralizing epitopes such as the receptor binding domain (RBD) of the spike
22 protein [4].

23 Current clinically approved ELISA tests either bind to the nucleocapsid
24 (NCP) protein or (part of) the spike protein (which includes the RBD). Both
25 of these proteins, but especially the NCP, are known to generate a strong
26 host immune response in other beta-coronaviruses [5, 6]. In contrast, nearly
27 all neutralising antibodies against SARS-CoV-2 discovered to date bind to
28 the small RBD portion of the spike protein [7, 8], and currently available
29 commercial assays indeed insufficiently predict neutralisation [2]. The pres-
30 ence and characterization of antibody responses in COVID-19 patients by
31 serological assays has been described in several reports [9, 10, 11, 12, 13, 14];
32 a key observation is that across many patients, antibodies are detected at
33 ~ 10 days post-onset of symptoms.

34 The performance of assays is characterized by their sensitivity and speci-
35 ficity [15]. To-date, most commercial ELISA performance validations were
36 obtained from biobanks relying on hospitalised patients; this positive patient
37 cohort will likely have higher antibody levels than milder, non-hospitalized
38 patients [16]. This is also observed for SARS-CoV-2 infections [17]. It is
39 thus unclear if the available tests are sufficiently sensitive to also detect
40 oligosymptomatic cases.

41 Here, we describe the collection and initial analysis of a blood biobank
42 representative for the observed COVID-19 symptomatic range in the pop-
43 ulation of Switzerland. The positive cohort in this biobank consists of 341
44 samples obtained from participants determined to have SARS-CoV-2 (PCR-
45 positive test) in various symptomatic and post-symptomatic stages. The
46 negative cohorts include 115 samples obtained from PCR-negative tested
47 participants, and 150 samples of blood donors from the 2016/17 flu sea-
48 son. The distribution in age and disease severity in this biobank is similar
49 to that reported for other areas in Western Europe. For each sample, we
50 measured the antibody response toward the NCP and S1 proteins using the
51 ELISA tests for IgM and IgG from Epitope Diagnostics and IgA and IgG
52 from Euroimmun, and characterized the performance of these assays. The
53 specificity of both the Euroimmun IgG and the Epitope Diagnostics IgM
54 assays was close to 100%, while the other two tests showed specificities of \sim
55 96% and lower. The sensitivity of the IgA and IgG tests was only sufficient
56 to detect \sim 90% of the cases, while the IgM test only detected \sim 50%. Pre-
57 vious studies reported a low and late IgM response, especially in less severe
58 COVID-19 patients [10, 11], which might partially explain the low IgM test
59 sensitivity. Taken together, our data indicates that the immune response in
60 oligosymptomatic patients is diverse and ill captured with the two employed

61 serological assays.

62 **2. Materials & methods**

63 *2.1. Ethics statement*

64 This study is part of the project 'COVID-19 in Baselland Investiga-
65 tion and Validation of Serological Diagnostic Assays and Epidemiological
66 Study of Sars-CoV-2 specific Antibody Responses (SERO-BL-COVID-19)'
67 approved by the ethics board "Ethikkommission Nordwest- und Zentralschweiz
68 (EKNZ)", Hebelstrasse 53, 4056 Basel representative of Swissethics under
69 the number (2020-00816).

70 Every participant has received a written informed consent at least 24
71 hours before participating in this study (attached original document in Ger-
72 man language). The participants had to sign the written informed consent
73 and needed to show it in order to be given access to the test facility. The
74 participants could withdraw their participation at any time without stating
75 any reason.

76 *2.2. Collection of samples*

77 *2.2.1. Blood Collection*

78 Venous blood was taken by puncturing a disinfected cubital or similar
79 area using a BD safety-lock system into a vacutainer. In total, 10–12 mL
80 each for EDTA-blood serum was taken. The blood collection was performed
81 by a medical assistant or nurse. After blood collection, the samples were
82 either transferred to the diagnostic lab or directly processed on site in the
83 make-shift laboratory.

84 *2.2.2. Saliva Collection*

85 Saliva was collected non-invasively using the dedicated Salivette tubes
86 (Sarstedt Cat. # 51.1534). In short, the participant delivered saliva into an
87 adsorbent filter, which was then placed by the participant in the Salivette
88 tube. After handover to the medical staff, the saliva was centrifuged on site
89 at 4°C using 1,000× g for 2 min to remove cells and debris. The tube was
90 then rapidly frozen using a salted ice-water bath and stored at −20°C before
91 transporting to the lab on dry ice and storage at −80°C until further use.

92 *2.2.3. Plasma and PBMC isolation and cell cryopreservation*

93 Density gradient separation was used in peripheral blood mononuclear
94 cell (PBMC) isolation. 12 mL of fresh donor blood was received in 3× 4 mL
95 plastic whole blood tubes with spray-coated K₂EDTA BD Vacutainer™
96 (Becton Dickinson, Cat. # 367844). The whole blood was diluted in 1:1 ratio
97 with 12 mL of PBS (w/o Ca²⁺ and Mg²⁺). The total volume of diluted blood
98 (24 mL) was gently and slowly layered on 14 mL of Ficoll Lymphoprep™
99 (STEMCELL, Cat. # 07861). Samples were centrifuged at 400× g 40 min,
100 22°C, no brakes. 14 mL of plasma was transferred in a 15 mL conical tube
101 and stored at 4°C. The layer of mononuclear cells was aspirated and trans-
102 ferred in a 50 mL conical tube containing 25 mL of PBS (w/o Ca²⁺ and
103 Mg²⁺). Cells were washed 300× g 8 min, 22°C, with brakes. Washing was
104 repeated with an additional 25 mL of PBS (w/o Ca²⁺ and Mg²⁺). Mononu-
105 clear cells were subsequently resuspended in 1 mL of freezing media (heat
106 inactivated FBS supplemented with 10% DMSO) and aliquoted into two 1.5
107 mL cryogenic tubes (Nalgene System, Thermo Scientific, Cat. # 5000-1020).
108 The cryogenic tubes were put into freezing containers Mr.Frosty™ (Thermo
109 Scientific, Cat. # 5100-0001) and the containers were immediately placed

110 into an -80°C freezer for 24 hrs, and then transferred into a liquid nitrogen
111 tank.

112 *2.2.4. Point of care validation*

113 To perform the point of care test (POCT) validation, a capillary blood
114 sample was taken from each subject by puncturing the end of a finger and
115 taking the blood with a micro pipette. Immediately after collecting, the
116 blood was put in the lateral flow chamber of the POCT and after 15 minutes
117 the result was visually scored as positive or negative by the medical assistant.
118 Additionally, the tests were imaged using a Nikon D5000 camera.

119 *2.2.5. Blood donor cohort*

120 Samples from nonremunerated blood donors originate from the Swiss
121 cantons of Thurgau, Basel, Bern, Waadt and Geneva, and were taken during
122 the pre-pandemic period 16th and 17th December 2016. These samples were
123 frozen as EDTA plasmas on microtiterplates for -20°C .

124 *2.3. ELISA analysis*

125 The following four commercially available immunoassays were charac-
126 terized in the study: the Anti-SARS-CoV-2-ELISA-IgA (Euroimmun AG,
127 Lübeck, # EI 2606-9601 A), the Anti-SARS-CoV-2-ELISA-IgAG (Euroim-
128 mun AG, Lübeck, # EI 2606-9601 G), the EDI Novel Coronavirus COVID-
129 19 IgM ELISA kit (Epitope Diagnostics, Inc., # KT-1033) and the EDI
130 Novel Coronavirus COVID-19 IgG ELISA kit (Epitope Diagnostics, Inc., #
131 KT-1032). All ELISA kits were CE and IVD labeled.

132 To enable a quantitative comparison between ELISA experiments, we
133 calculated fold changes in OD relative to the assay- and run-specific cut-off

134 values ($OD_{\text{sample}}/OD_{\text{cut-off}}$), where $OD_{\text{cut-off}} = 1.1 \times OD_{\text{cal}}$ for both Euroim-
135 mun ELISAs, $OD_{\text{cut-off}} = (1.1 + 0.18) \times OD_{\text{NC}}$ for EDI IgG and $OD_{\text{cut-off}} =$
136 $(1.1 + 0.10) \times OD_{\text{NC}}$ for EDI IgM, where OD_{cal} and OD_{NC} are calibration
137 respectively average negative control values as described by the manufac-
138 turers. Note that fold changes are not comparable between Euroimmun and
139 EDI ELISA test kits because the assays show large differences in dynamic
140 range and saturation. Detailed calculation can be found in the supplemen-
141 tary methods.

142 *2.4. Statistical analysis*

143 Patient data and results of POCTs were originally stored in the RED-
144 Cap database system of the Canton Hospital Basel-Landschaft. Results
145 from ELISA tests were entered into Excel worksheets. All data were pre-
146 processed and a common database created using in-house scripts in R [18].
147 Statistical analysis and creation of figures and tables was carried out using R;
148 binomial confidence intervals are 95%-Clopper-Pearson intervals calculated
149 using `exactci()` from package `PropCIs` [19]. A refresher for the calculation
150 of specificity and sensitivity calculation can be found in the supplementary
151 methods.

152 *2.5. Role of the funding source*

153 The sponsor had no role in study design; in the collection, analysis, and
154 interpretation of data; in the writing of the report; or in the decision to
155 submit the paper for publication.

156 **3. Results**

157 *3.1. Study design & cohorts*

158 The goal of our study design was to collect a representative cohort of
159 COVID-19 disease manifestation during the first wave of COVID-19 in the
160 canton Basel-Landschaft, Switzerland. During the initial phase of the pan-
161 demic, only people in risk groups showing symptoms were tested; later,
162 testing was extended to all people showing symptoms and 5311 people had
163 been tested in the canton at the beginning of study recruitment, with 802
164 (15.1%) positive and 4509 (84.9%) negative PCR test results. The cases
165 were mostly observed close to or in areas with a high frequency of commut-
166 ing to the city of Basel, but the ratio of positive tests showed no apparent
167 bias for or against rural communities.

168 All RT-PCR-tested individuals were eligible for participation except when
169 they were <18 years of age, had a severely compromised immune system,
170 were hospitalized at the time of sample collection, or were deceased. From
171 these, 349 positive individuals committed to participating in the study,
172 and 111 negative individuals were randomly selected. We aimed for suffi-
173 cient sample size for two positive cohorts: an 'acute' cohort with diagnosed
174 COVID-19 up to 12 days before study entry, and a 'convalescent' cohort
175 with more than 12 days between positive diagnosis and study entry.

176 Individuals were continuously recruited during a 2 week window from 11.
177 April 2020 to 22. April 2020 and visited the 'Abklärungsstation COVID-
178 19' in Münchenstein, Switzerland. The medical history and the status were
179 recorded in a doctors interview, the vital parameters were acquired, and
180 saliva and blood samples were collected. All participants of the positive
181 cohort were guided through the building, while the negative cohort was

182 examined in a make-shift field hospital erected next to the building to mini-
183 mize the danger of infection with COVID-19. Participant characteristics are
184 summarized in Table 1.

Cohort	PCR pos, \leq 7d (N = 31)	PCR pos, $>$ 7d & \leq 12d (N = 46)	PCR pos, $>$ 12d (N = 272)	PCR neg, $>$ 5d (N = 111)
Sex				
female	17 (55%)	25 (54%)	130 (48%)	63 (57%)
male	14 (45%)	21 (46%)	142 (52%)	48 (43%)
Age				
years, median (range)	45 (21-80)	51 (20-80)	51.5 (17-93)	48 (19-87)
Weight				
kg, median (range)	73 (51-110)	72 (40-109)	76 (49-135)	73 (47-130)
Height				
cm, median (range)	173.5 (157-187)	172 (150-191)	173 (72-198)	172 (149-195)
SpO2				
%, median (range)	98 (93-99)	98 (88-99)	98 (85-99)	98 (95-99)
Total days ill				
0-5 days	6 (19%)	1 (2%)	28 (10%)	—
5-10 days	15 (48%)	23 (50%)	146 (54%)	—
10-14 days	10 (32%)	22 (48%)	98 (36%)	—

Table 1: Characteristics of patients included in the study.

185 Distribution of ages and gender for the positive cohort are similar to the
186 age and gender structure of the canton, except for the age between 40–65
187 which are over-represented and >80 which are under-represented (Table 2
188 and Supplementary Figure 1). From the 349 positive participants, 35 (10%)
189 were bedridden during the acute disease, 62 (18%) required help for their
190 daily activities, while 244 (72%) had no restrictions. Similar distributions
191 are reported elsewhere. All age groups were affected equally, however severe
192 cases were more pronounced in the older population. Increasing disease
193 severity correlated with the experienced symptoms; bedridden cases suffered
194 approximately 10 or more days, cases requiring help ~10 days, and the
195 oligosymptomatic cases between 5 to 15 days.

	Age groups						
	15-19*	20-29	30-39	40-49	50-64	65-79	80+
Overall	5 (1.1%)	55 (12%)	64 (13.9%)	99 (21.5%)	159 (34.6%)	68 (14.8%)	10 (2.2%)
Severity of illness							
Not ill	1 (20%)	13 (24%)	23 (36%)	24 (24%)	29 (18%)	18 (26%)	3 (30%)
No restrictions	4 (80%)	36 (65%)	34 (53%)	53 (54%)	91 (57%)	28 (41%)	4 (40%)
Help needed	0 (0%)	6 (11%)	6 (9%)	18 (18%)	22 (14%)	9 (13%)	1 (10%)
Bedridden	0 (0%)	0 (0%)	1 (2%)	4 (4%)	17 (11%)	13 (19%)	2 (20%)
Total days ill							
0-5 days	0 (0%)	7 (17%)	5 (12%)	7 (9%)	11 (8%)	5 (10%)	0 (0%)
5-10 days	3 (75%)	19 (45%)	24 (59%)	39 (52%)	72 (55%)	24 (48%)	3 (43%)
10-15 days	1 (25%)	16 (38%)	12 (29%)	29 (39%)	47 (36%)	21 (42%)	4 (57%)
Baselland (2019)	13924 (5.6%)	30882 (12.4%)	35666 (14.3%)	39190 (15.7%)	65017 (26.1%)	45175 (18.1%)	19054 (7.7%)

Table 2: Age structure of study cohort stratified by severity and by duration of symptoms.

Last row shows distribution of ages 15+ in canton of Basel-Land in 2019 for reference.

*Note that our study cohort does not include minors with less than 18 years of age.

196 We use two negative cohorts; (i) samples from 150 2016/17 influenza
197 period blood donors, and (ii) our negative cohort. These cohorts should
198 strengthen the specificity calculations, but also help to address cross-reactivity
199 to viruses currently in circulation. However, the PCR test is prone to false
200 negatives, and we therefore expect to find a small number of incorrectly
201 diagnosed individuals. In line with the reported false negative rate of 15–
202 25% [20, 21], we identified four individuals with negative PCR results but
203 seroconverted in both Euroimmun IgG and IgA and Epitope Diagnostics
204 (EDI) IgG. We consider these four individuals as false negative PCR re-
205 sults and removed them from the dataset. All results are only influenced
206 marginally by this step.

207 *3.2. Performance characteristics of ELISA tests*

208 *3.2.1. Sensitivity & specificity*

209 We performed the EDI and Euroimmun assays according to the manufac-
210 turers instructions on all samples. The obtained data were normalized (see
211 Material and Methods section) to make results comparable between experi-
212 ments. The reported fold-changes are defined as the ratio between measured
213 OD and the classification cut-off OD specified by the manufacturer (Figure 1
214 & Supplementary Figure 2). Positive/negative classification was performed
215 according to manufacturer’s instructions, and the assay performance was
216 calculated therefrom.

217 We used a patient’s assignment to the PCR-positive or PCR-negative
218 cohort together with the corresponding ELISA test result for calculating
219 performance characteristics for all four assays. The values considering all
220 data are shown in the top of Table 3. We find specificities of the IgG-based
221 assays of about 98%-99%, while IgA shows considerably lower and IgM con-

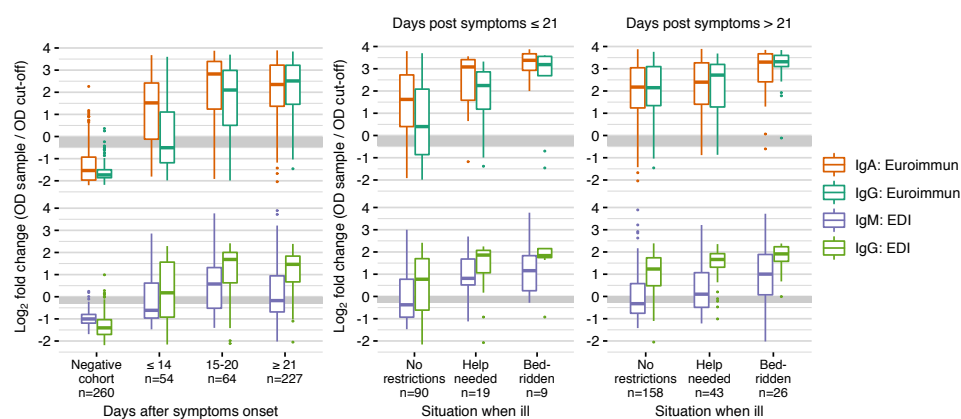


Figure 1: **Overview on ELISA results.** Epitope Diagnostics (EDI) and Euroimmun assays were performed with serum from 607 individuals. The negative cohort consists of 150 serum samples collected during the 2016/17 influenza period and 110 serum samples from PCR-negative individuals from 2020. Positive cases are stratified by days post symptoms onset (left) and additionally stratified by disease severity (right). Fold changes are defined as the ratio between measured OD and the classification cut-off OD specified by the manufacturer. Grey area indicates the range where serum samples are classified as uncertain; samples above (below) this area are classified as positive (negative).

222 siderably higher specificity overall. To determine potential cross-reactivity
223 of the assays, we separately calculated the specificity from the 150 sam-
224 ples of the 2016 blood donor cohort (Table 3 (bottom)). Nevertheless, the
225 histogram of all assays and data show overlap between the cohorts (Supple-
226 mentary Figure 3).

	EDI				Euroimmun		
	Serum		Plasma		Serum		
	IgM	IgG	IgM	IgG	IgA	IgG	IgG 1.5×
TP	161	287	176	280	304	291	272
FP	3	6	11	12	22	2	0
TN	257 (2)	254 (7)	100 (11)	99 (13)	238 (12)	258 (2)	260 (0)
FN	184 (35)	58 (16)	161 (36)	57 (14)	41 (15)	54 (12)	73 (0)
Se [CI], %	46.7 [41.3, 52.1]	83.2 [78.8, 87]	52.2 [46.7, 57.7]	83.1 [78.6, 86.9]	88.1 [84.2, 91.3]	84.3 [80.1, 88]	78.8 [74.1, 83]
Sp [CI], %	98.8 [96.7, 99.8]	97.7 [95, 99.1]	90.1 [83, 94.9]	89.2 [81.9, 94.3]	91.5 [87.5, 94.6]	99.2 [97.2, 99.9]	100 [98.6, 100]
2016 blood donors							
TN	150 (0)	147 (3)	—	—	136 (7)	150 (2)	150 (0)
FP	0	3	—	—	14	0	0
Sp [CI], %	100 [97.6, 100]	98 [94.3, 99.6]	—	—	90.7 [84.8, 94.8]	100 [97.6, 100]	100 [97.6, 100]

Table 3: Top: Number true positive (TP), false positive (FP), true negative (TN), false negative (FN), sensitivity (Se) and specificity (Sp) for Epitope Diagnostics (EDI) serum and plasma samples and Euroimmun ELISA serum samples for all cohorts. All samples with uncertain result were considered negative for the analysis (number of uncertain samples shown in brackets). Column IgG 1.5× for Euroimmun corresponds to using a threshold of 1.5 instead of 1.1 for the OD-ratio. Bottom: specificity based on serum samples of negative 2016 blood donor cohort only.

227 The IgG- and IgA-based assays show overall sensitivities above 87%,
228 while the sensitivity of IgM is extremely low at slightly above 50%. How-
229 ever, the different types of antibodies act at different stages of the immune
230 response. We therefore stratified the calculation of assay sensitivities by
231 days after onset of symptoms into three categories: 14 days or less, 15 to 20
232 days, and 21 days or more (Table 4 & Supplementary Figure 4). Sensitivities
233 increase with days after onset of symptoms for both IgG assays from about
234 50% to 95%. The sensitivity of the IgM assay remains low for all strata,
235 while IgA already shows substantially higher sensitivities than all other as-
236 says for less than 14 days after onset of symptoms. Specifically, sensitivity
237 is low for the EDI Diagnostics IgM assay, reaching a maximum of 64% for
238 two to three weeks after onset of symptoms. Both IgG assays show over-
239 all sensitivities below 90%, but sensitivities increase to 95% or higher three
240 weeks after onset of symptoms. The Euroimmun IgA sensitivity is highest
241 among the four assays for less than two weeks after onset of symptoms with
242 82% and also reaches about 95% after three weeks or more after onset of
243 symptoms.

EDI ELISA						
	IgM			IgG		
	≤ 14 days	15–20 days	≥ 21 days	≤ 14 days	15–20 days	≥ 21 days
TP	20	32	109	29	44	214
FN	34 (5)	20 (4)	130 (26)	25 (2)	8 (1)	25 (13)
Se [CI], %	37 [24.3, 51.3]	61.5 [47, 74.7]	45.6 [39.2, 52.2]	53.7 [39.6, 67.4]	84.6 [71.9, 93.1]	89.5 [84.9, 93.1]
Euroimmun ELISA						
	IgA			IgG		
	≤ 14 days	15–20 days	≥ 21 days	≤ 14 days	15–20 days	≥ 21 days
TP	40	46	218	23	42	226
FN	14 (5)	6 (1)	21 (9)	31 (3)	10 (4)	13 (5)
Se [CI], %	74.1 [60.3, 85]	88.5 [76.6, 95.6]	91.2 [86.9, 94.5]	42.6 [29.2, 56.8]	80.8 [67.5, 90.4]	94.6 [90.9, 97.1]

Table 4: Sensitivity of EDI (top) and Euroimmun (bottom) ELISA stratified by days after onset of symptoms. All samples with uncertain result were considered negative for the analysis (number of uncertain samples shown in brackets).

244 We performed the same analysis stratified by three levels of disease
245 severity—‘no restriction’, ‘help needed’, and ‘bedridden’—and combined
246 these levels with two levels for days after onset of symptoms: short (≤ 21
247 days) or long (> 21 days). The resulting sensitivities and specificities and
248 their 95% confidence intervals are given in Table 5. As expected, sensitivities
249 also increase with severity of symptoms for both less and more than three
250 weeks after onset of symptoms, but sample sizes are comparatively small for
251 shorter time and higher severity. Notably, the IgG response is detectable in
252 all samples of the ‘bedridden’ cohort > 21 days, and is then comparable to
253 the manufacturers characterisation on this subset.

EDI IgM						
	Bedridden		Help needed		No restrictions	
	≤ 21d	> 21d	≤ 21d	> 21d	≤ 21d	> 21d
TP	7	20	15	23	36	60
FN	2 (2)	6 (3)	4 (0)	20 (6)	54 (8)	98 (16)
Se [CI], %	77.8 [40, 97.2]	76.9 [56.4, 91]	78.9 [54.4, 93.9]	53.5 [37.7, 68.8]	40 [29.8, 50.9]	38 [30.4, 46]
EDI IgG						
	Bedridden		Help needed		No restrictions	
	≤ 21d	> 21d	≤ 21d	> 21d	≤ 21d	> 21d
TP	8	25	17	39	58	140
FN	1 (0)	1 (1)	2 (0)	4 (2)	32 (4)	18 (9)
Se [CI], %	88.9 [51.8, 99.7]	96.2 [80.4, 99.9]	89.5 [66.9, 98.7]	90.7 [77.9, 97.4]	64.4 [53.7, 74.3]	88.6 [82.6, 93.1]
Euroimmun IgA						
	Bedridden		Help needed		No restrictions	
	≤ 21d	> 21d	≤ 21d	> 21d	≤ 21d	> 21d
TP	9	25	18	40	71	141
FN	0 (0)	1 (0)	1 (0)	3 (2)	19 (6)	17 (7)
Se [CI], %	100 [66.4, 100]	96.2 [80.4, 99.9]	94.7 [74, 99.9]	93 [80.9, 98.5]	78.9 [69, 86.8]	89.2 [83.3, 93.6]
Euroimmun IgG						
	Bedridden		Help needed		No restrictions	
	≤ 21d	> 21d	≤ 21d	> 21d	≤ 21d	> 21d
TP	7	25	16	42	53	148
FN	2 (0)	1 (1)	3 (0)	1 (0)	37 (7)	10 (4)
Se [CI], %	77.8 [40, 97.2]	96.2 [80.4, 99.9]	84.2 [60.4, 96.6]	97.7 [87.7, 99.9]	58.9 [48, 69.2]	93.7 [88.7, 96.9]

Table 5: Sensitivities stratified by severity of illness. All samples with uncertain result were considered negative for the analysis (number of uncertain samples shown in brackets).

254 *3.2.2. Reproducibility and linearity*

255 Intra-assay variability was determined by calculating the mean, stan-
256 dard deviation, and coefficient of variation of the measured OD ratios based
257 in 5 replicate measurements of 8 samples with values ranging from at or
258 below the threshold limit to about the 75% quartile in the two IgG and
259 IgA assays (Supplementary Table 5 & Supplementary Figure 6). In general,
260 reproducibility was high with coefficients of variation of 5% or smaller in
261 samples well above the threshold. This variation increased to $\sim 10\%$ at
262 or below the threshold. It is trivial but important to state that, at the
263 threshold, this variability can lead to different classification in each repe-
264 titution. Last, different samples show different variabilities in the two IgG
265 assays, possibly indicating the difference between the binding epitope and
266 assay manufacturing.

267 We investigated the assay linearity using two-fold serially diluted serum
268 samples from 5 individuals with high OD values for IgG (Supplementary
269 Figure 11). Both Euroimmun assays showed a good linearity over a dilution
270 range of 64-fold (2^6 dilutions), while the IgG Epitope Diagnostics (EDI)
271 assay is linear only in a 16-fold (2^4) dilution range. Additionally, both
272 IgG assays show good agreement along the dilutions (Supplementary Figure
273 10), suggesting that—after normalization and scaling—the IgG assays give
274 comparable quantitative results. No data of sufficient quality was acquired
275 for a discussion of the IgM assay (Supplementary Figure 11). Additionally,
276 we found that the IgG, but not the IgM, assay from EDI is sensitive to
277 haemolysis (Supplementary Figure 12).

278 *3.3. Kinetics of seroconversion*

279 Our positive cohort can give insight into the kinetics of seroconversion at
280 the population level for different antibody types and epitopes and a broad
281 range of disease manifestations. The two ELISA tests employ different epi-
282 topes: the EDI test recognizes the SARS-CoV-2 nucleocapsidprotein and
283 uses IgG and IgA while the Euroimmun test recognizes the S1 portion of
284 the spike protein using IgG and IgM.

285 For all antibody types, the strength of the response over time correlated
286 with severity of the symptoms (Figure 2A). We only measured a well dis-
287 cernible IgM response in the "bedridden" group and a slight response in
288 the "help needed" group, while it was largely absent from the "no restric-
289 tion" group. On the other hand, the IgA and IgG response is measurable
290 in most samples. The average response is higher when "bedridden", while
291 similar antibody response levels are observed for "no restriction" and "help
292 needed".

293 In most viral host responses, the earliest measurable response is IgM
294 followed by IgG and IgA. Surprisingly, but in line with other reports for
295 SARS-CoV-2 [10, 11] as well as observations for SARS and MERS, all three
296 antibody types reacted within a similar timeframe. The earliest detection,
297 within a week of symptom onset, was for IgA, followed by IgM and IgG both
298 detected from week 2. IgM then peaked 2–3 weeks and IgA 3–4 weeks post
299 symptom onset, while no decline for IgG was measured. The temporal order
300 of these peaks can be expected based on the half-life time of the different
301 antibody types in the blood.

302 These observations are further substantiated from observing the responses
303 on the level of the individuals. Most interestingly, we find a robust IgG re-
304 sponse against the NCP early on, whereas the response to the spike protein

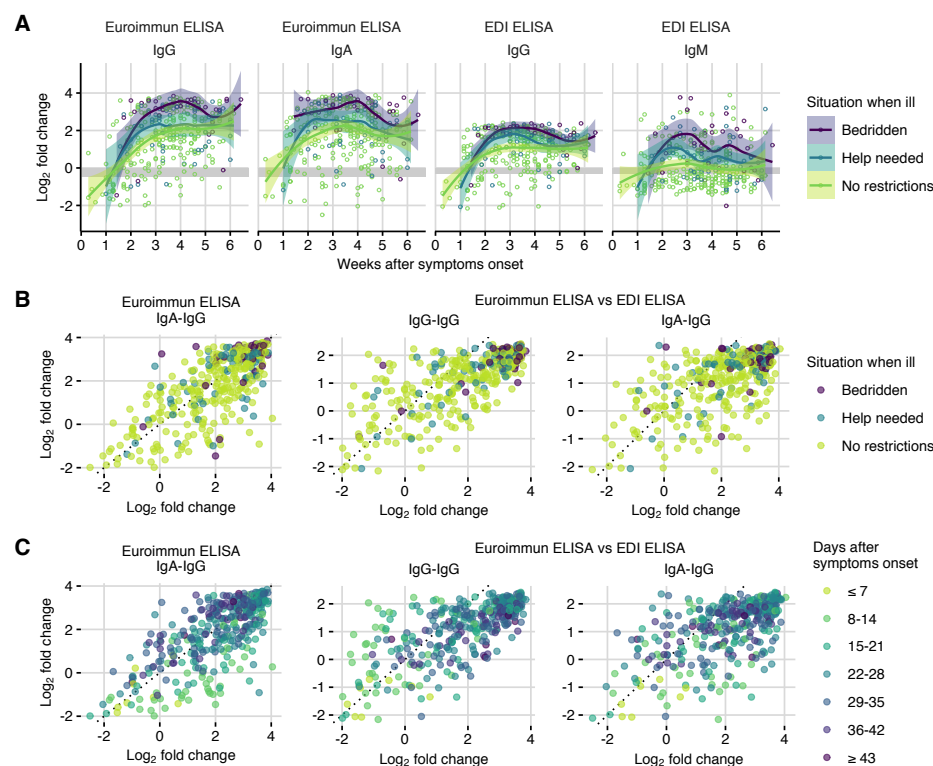


Figure 2: A: Log₂-fold changes in ELISA signal for each assay by time after symptoms onset and by disease severity. Data was fitted using smoothing splines to visualize trends (figure shows fits and 95% confidence intervals). Grey area indicates the range where serum samples are classified as uncertain; samples above (below) this area are classified as positive (negative). B: Scatterplots comparing log₂-fold changes in IgA vs IgG measured by Euroimmun ELISA (left), IgG measured by Euroimmun ELISA vs IgG measured by Epitope Diagnostics (EDI) ELISA (center), and Euroimmun IgA vs EDI IgG (right) by disease severity. C: As in B but with days after onset of symptoms. Fold-changes are defined as the ratio between measured OD and the classification cut-off OD specified by the manufacturer.

305 seems to be more prevalent at later time points (Figure 2A). However, nei-
306 ther IgG response is significantly different depending on the severity of the
307 disease. The IgA response against the spike protein is produced rapidly in
308 the absence of an IgG response but subsides at later time points when the
309 IgG response becomes dominant.

310 **4. Discussion**

311 Here, we describe the collection and initial characterisation of a blood
312 bank from the affected population of the canton Basel-Landschaft, Switzer-
313 land. Almost 50% of the people fallen ill with COVID-19 participated in
314 this study and the biobank is therefore exemplary for an outbreak in a
315 western European community. In particular, the COVID-19 severity and
316 symptoms in the biobank samples closely follow the reported distributions
317 elsewhere. We might have slightly biased our cohorts toward less severe
318 cases, by excluding samples from actively hospitalized or deceased patients.
319 Since only 11 cases remained in the hospital at the time of recruitment, this
320 bias is likely small. Overall, we consider the largely representative sample a
321 strength of our biobank, as it allows us to estimate the kinetics of serocon-
322 version and assay performance characteristics on samples closely resembling
323 those expected in population-wide studies for sero-prevalence.

324 We find that both specificity and sensitivity are below the manufacturers
325 specifications for all four tests, and observe similar sensitivities only for our
326 'bedridden' group. This indicates that characterizations by the manufac-
327 turers are likely based on 'severe' cohorts, which limits their applicability
328 and impairs planning of sero-prevalence studies. We also find that the IgA
329 and IgG assays allow for quantification within a relatively narrow range: the

330 linear range of the Euroimmun assay covers approximately a 64-fold dilu-
331 tion range and the EDI assay a 16-fold dilution range. When calculating
332 sensitivities and specificities with our cohort, the IgA test shows the highest
333 sensitivity, followed by the two IgG assays. The poor sensitivity of the IgM
334 test is either due to the absence of a dedicated IgM response [22] in line
335 with previous reports or poor test performance. The highest specificity is
336 achieved with the Euroimmun IgG test. The specificity could be further
337 boosted by a higher cut-off as previously reported, however accompanied by
338 a concurrent drop in sensitivity (Supplementary Tables 14, 15, 16).

339 The average strength of the antibody response, as measured by the ra-
340 tios, correlates with the severity of the disease at each time point. However,
341 the differences vanish the longer post-symptoms onset the individuals are,
342 and the measured amount in an individual is not predictive for the sever-
343 ity of the disease. Surprisingly, but similar to earlier reports, we measured
344 that the temporal order of the response is shifted. IgA is measured within
345 1–2 weeks after symptoms onset, followed by the IgG response at week 2–3,
346 while a clear IgM response is absent. Especially at earlier time points, the
347 IgA response is stronger than the IgG response as measured using the S1
348 spike protein epitope in the Euroimmun assay. To fully understand what
349 the obtained values reflect and how they correlate with diseases and pro-
350 tection from disease, further analyses are planned including measuring the
351 strength to neutralize pseudo-typed viral particles and analysing the indi-
352 vidual antibodies by sequencing the PBMCs. However, our current data
353 help to understand the limitations of the current antibody tests on the mar-
354 ket and serve as the basis to interpret ongoing studies on other lab assay
355 characterization, POCT performances and PBMC sequencing.

356 **Acknowledgement**

357 This study was sponsored by Jürg Sommer, head of the "Amt für Gesund-
358 heit", and the logistics of the sample collection were provided by the crisis
359 staff and the civil protection service of the canton Basel-Landschaft. FR
360 is funded by the NCCR 'Molecular Systems Engineering'. Funding for JD
361 from the two Cantons of Basel through project grant PMB-01-17 granted
362 by the ETH Zurich is acknowledged.

363 Funding for TR, DP, BN Funding for MS

364 **References**

- 365 [1] A. T. Huang, B. Garcia-Carreras, M. D. Hitchings, B. Yang, L. Katzel-
366 nick, S. M. Rattigan, B. Borgert, C. Moreno, B. D. Solomon,
367 I. Rodriguez-Barraquer, et al., A systematic review of antibody me-
368 diated immunity to coronaviruses: antibody kinetics, correlates of pro-
369 tection, and association of antibody responses with severity of disease,
370 medRxiv (2020).
- 371 [2] J. AJ, A. MJ, et al., Performance of six SARS-CoV-2 immunoassays in
372 comparison with microneutralisation, Journal of clinical virology: the
373 official publication of the Pan American Society for Clinical Virology
374 129 (2020) 104512.
- 375 [3] F. Schmidt, Y. Weisblum, F. Muecksch, H.-H. Hoffmann, E. Michailidis,
376 J. C. Lorenzi, P. Mendoza, M. Rutkowska, E. Bednarski, C. Gaebler,
377 et al., Measuring SARS-CoV-2 neutralizing antibody activity using
378 pseudotyped and chimeric viruses, bioRxiv (2020).

- 379 [4] F. Amanat, D. Stadlbauer, S. Strohmeier, T. H. Nguyen,
380 V. Chromikova, M. McMahon, K. Jiang, G. A. Arunkumar, D. Jur-
381 czyszak, J. Polanco, et al., A serological assay to detect SARS-CoV-2
382 seroconversion in humans, *Nature medicine* (2020) 1–4.
- 383 [5] Y. Shi, Y. Yi, P. Li, T. Kuang, L. Li, M. Dong, Q. Ma, C. Cao, Diagnosis
384 of severe acute respiratory syndrome (SARS) by detection of SARS
385 coronavirus nucleocapsid antibodies in an antigen-capturing enzyme-
386 linked immunosorbent assay, *Journal of clinical microbiology* 41 (2003)
387 5781–5782.
- 388 [6] P. D. Burbelo, F. X. Riedo, C. Morishima, S. Rawlings, D. Smith,
389 S. Das, J. R. Strich, D. S. Chertow, R. T. Davey Jr, J. I. Cohen,
390 Sensitivity in detection of antibodies to nucleocapsid and spike proteins
391 of severe acute respiratory syndrome coronavirus 2 in patients with
392 coronavirus disease 2019, *The Journal of infectious diseases* (2020).
- 393 [7] F. Wu, A. Wang, M. Liu, Q. Wang, J. Chen, S. Xia, Y. Ling, Y. Zhang,
394 J. Xun, L. Lu, et al., Neutralizing antibody responses to SARS-CoV-2
395 in a COVID-19 recovered patient cohort and their implications (2020).
- 396 [8] T. F. Rogers, F. Zhao, D. Huang, N. Beutler, A. Burns, W.-t. He,
397 O. Limbo, C. Smith, G. Song, J. Woehl, et al., Isolation of potent
398 SARS-CoV-2 neutralizing antibodies and protection from disease in a
399 small animal model, *Science* (2020).
- 400 [9] N. M. Okba, M. A. Müller, W. Li, C. Wang, C. H. GeurtsvanKessel,
401 V. M. Corman, M. M. Lamers, R. S. Sikkema, E. de Bruin, F. D. Chan-
402 dler, et al., Severe acute respiratory syndrome coronavirus 2-specific

- 403 antibody responses in coronavirus disease 2019 patients., *Emerging*
404 *infectious diseases* 26 (2020).
- 405 [10] B. Sun, Y. Feng, X. Mo, P. Zheng, Q. Wang, P. Li, P. Peng, X. Liu,
406 Z. Chen, H. Huang, et al., Kinetics of SARS-CoV-2 specific IgM and
407 IgG responses in COVID-19 patients, *Emerging Microbes & Infections*
408 (2020) 1–36.
- 409 [11] Q.-X. Long, B.-Z. Liu, H.-J. Deng, G.-C. Wu, K. Deng, Y.-K. Chen,
410 P. Liao, J.-F. Qiu, Y. Lin, X.-F. Cai, et al., Antibody responses to
411 SARS-CoV-2 in patients with COVID-19, *Nature medicine* (2020) 1–4.
- 412 [12] L. Shen, C. Wang, J. Zhao, X. Tang, Y. Shen, M. Lu, Z. Ding, C. Huang,
413 J. Zhang, S. Li, et al., Delayed specific IgM antibody responses observed
414 among COVID-19 patients with severe progression, *Emerging Microbes*
415 *& Infections* 9 (2020) 1096–1101.
- 416 [13] M. S. Suthar, M. G. Zimmerman, R. C. Kauffman, G. Mantus, S. L.
417 Linderman, W. H. Hudson, A. Vanderheiden, L. Nyhoff, C. W. Davis,
418 S. Adekunle, et al., Rapid generation of neutralizing antibody responses
419 in COVID-19 patients, *Cell Reports Medicine* (2020).
- 420 [14] R. Wölfel, V. M. Corman, W. Guggemos, M. Seilmaier, S. Zange, M. A.
421 Müller, D. Niemeyer, T. C. Jones, P. Vollmar, C. Rothe, et al., Viro-
422 logical assessment of hospitalized patients with COVID-2019, *Nature*
423 581 (2020) 465–469.
- 424 [15] J. Lathrop, FDA, Analytical validation and points for discussion, 2016.
- 425 [16] S. Ubol, S. B. Halstead, How innate immune mechanisms contribute to

- 426 antibody-enhanced viral infections, *Clinical and Vaccine Immunology*
427 17 (2010) 1829–1835.
- 428 [17] J. Xie, C. Ding, J. Li, Y. Wang, H. Guo, Z. Lu, J. Wang, C. Zheng,
429 T. Jin, Y. Gao, et al., Characteristics of patients with coronavirus
430 disease (COVID-19) confirmed using an IgM-IgG antibody test, *Journal*
431 *of medical virology* (2020).
- 432 [18] R Core Team, R: A Language and Environment for Statistical Comput-
433 ing, R Foundation for Statistical Computing, Vienna, Austria, 2019.
- 434 [19] R. Scherer, PropCIs: Various Confidence Interval Methods for Propor-
435 tions, 2018. R package version 0.3-0.
- 436 [20] L. M. Kucirka, S. A. Lauer, O. Laeyendecker, D. Boon, J. Lessler, Vari-
437 ation in false-negative rate of reverse transcriptase polymerase chain
438 reaction-based SARS-CoV-2 tests by time since exposure, *Annals of*
439 *Internal Medicine* (2020).
- 440 [21] A. T. Xiao, Y. X. Tong, S. Zhang, False-negative of RT-PCR and
441 prolonged nucleic acid conversion in COVID-19: rather than recurrence,
442 *Journal of medical virology* (2020).
- 443 [22] H. Ma, W. Zeng, H. He, D. Zhao, D. Jiang, P. Zhou, L. Cheng, Y. Li,
444 X. Ma, T. Jin, Serum IgA, IgM, and IgG responses in COVID-19,
445 *Cellular & Molecular Immunology* (2020) 1–3.