

1 Title: **Quantifying arbovirus disease and transmission risk at the municipality**
2 **level in the Dominican Republic: the inception of R_m**

3 Short title: **Epidemic Metrics for Municipalities**

4 **Rhys Kingston¹, Isobel Routledge¹, Samir Bhatt¹, Leigh R Bowman^{1*}**

5 *1. Department of Infectious Disease Epidemiology, Imperial College London, UK*

6 **Corresponding author*

7 leigh.bowman@gmail.com

8

9

10 **Abstract**

11 Arboviruses remain a significant cause of morbidity, mortality and economic cost
12 across the global human population. Epidemics of arboviral disease, such as Zika
13 and dengue, also cause significant disruption to health services at local and national
14 levels. This study examined 2014-16 Zika and dengue epidemic data at the sub-
15 national level to characterise transmission across the Dominican Republic.

16

17 For each municipality, spatio-temporal mapping was used to characterise disease
18 burden, while data were age and sex standardised to quantify burden distributions
19 among the population. In separate analyses, time-ordered data were combined with
20 the underlying disease migration interval distribution to produce a network of likely
21 transmission chain events, displayed using transmission chain likelihood matrices.
22 Finally, municipal-specific reproduction numbers (R_m) were established using a
23 Wallinga-Teunis matrix.

24

25 Dengue and Zika epidemics peaked during weeks 39-52 of 2015 and weeks 14-27 of
26 2016 respectively. At the provincial level, dengue attack rates were high in
27 Hermanas Mirabal and San José de Ocoa (58.1 and 49.2 cases per 10,000
28 population respectively), compared with the Zika burden, which was highest in
29 Independencia and San José de Ocoa (21.2 and 13.4 cases per 10,000 population
30 respectively). Across municipalities, high disease burden was observed in Cotui (622
31 dengue cases per 10,000 population) and Jimani (32 Zika cases per 10,000
32 population). Municipal infector-infectee transmission likelihood matrices identified six
33 0% likelihood transmission events throughout the dengue epidemic and one 0%
34 likelihood transmission event during the Zika epidemic. Municipality reproduction

35 numbers (R_m) were consistently higher, and persisted for a greater duration during
36 the Zika epidemic ($R_m = 1.0$), than during the dengue epidemic ($R_m = <1.0$).

37

38 This research highlights the importance of disease surveillance in land-border
39 municipalities as an early warning for infectious disease transmission. It also
40 demonstrates that a high number of importation events are required to sustain
41 transmission in endemic settings, and vice versa for newly emerged diseases. The
42 inception of a novel epidemiological metric, R_m , reports transmission risk using
43 standardised spatial units, and can be used to identify high transmission risk
44 municipalities to better focus public health interventions for dengue, Zika, and other
45 infectious diseases.

46

47 **Author Summary**

48

49 Arboviruses remain a significant cause of morbidity, mortality and economic cost.

50 Between the years 2014-16, two large arbovirus outbreaks occurred in the

51 Dominican Republic. The first was a wave of dengue cases, followed by a large Zika

52 epidemic. Using various mathematical modelling and geospatial approaches, a

53 number of analyses were undertaken to both characterise the pattern of disease

54 transmission and identify high-burden municipalities. Throughout the process, a

55 novel metric was developed: the R_m . This parameter was used to identify the

56 transmission potential of any given municipality to surrounding municipalities, where

57 >1.0 is high transmission risk, and <1.0 is low transmission risk. This is useful as it

58 provides a standardised approach to determine where public health resources might

59 be focussed to better impact ongoing disease transmission. Additionally, analyses

60 demonstrated the importance of increased disease surveillance in municipalities that

61 share land borders with neighbouring countries, and how relatively few disease

62 importation events can spark and sustain an epidemic.

63

64 **Introduction**

65 Arboviruses are an informal name for a group of viruses transmitted by arthropods
66 such as ticks, mosquitoes and sand flies (1) - members of which include Rift Valley
67 Fever, Chikungunya and West Nile Virus (2). Arboviruses are commonly zoonotic,
68 and the cause of increasing human disease worldwide. In recent years, the
69 arboviruses Zika and dengue have afflicted millions via endemic and epidemic
70 transmission, in part due to relatively few, effective means of control (3). Indeed,
71 current estimates suggest that the global annual burden of dengue infections is 390
72 million, with 96 million manifesting clinically (4). Those at risk number 3.97 billion
73 across 128 countries worldwide (5). In the case of Zika, estimates of the global
74 burden are not yet available, however by the end of 2018, the Pan American Health
75 Organisation (PAHO) had reported 19,020 suspected cases of Zika, with 1,379
76 laboratory confirmed cases in Brazil alone (6).

77

78 Dengue and Zika are principally transmitted via *Aedes* mosquitoes. When a female
79 *Aedes* mosquito bites an infected human, the mosquito ingests a blood meal
80 containing the virus, at which point it enters the midgut, proliferates, and spreads to
81 the salivary glands. Once the mosquito bites another person, the cycle is complete
82 (7). However, vertical transmission can also occur, and while this is relatively rare for
83 dengue (8), such transmission is more common with Zika; indeed in a prospective
84 cohort, 26% of maternal cases resulted in vertical transmission to the unborn foetus
85 (9). Importantly, sexual transmission between humans is also a significant driver of
86 Zika epidemiology (10).

87

88 The basic reproduction number (R_0) describes the average number of secondary
89 infections produced by a single infectious individual in a totally susceptible
90 population (11). Epidemics involving novel pathogens are best described using R_0 ,
91 due to the absence of existing population immunity (12). By contrast, R_{eff} is most
92 appropriate in endemic settings (11), when part of the population is already immune
93 (12). In the absence of field data, mathematical modelling is used to average the
94 expected number of new infections over all possible infected individuals. This idea
95 can be represented by a matrix where the reproduction number is recognised as the
96 dominant eigenvalue of an operator, which is linear for every pair of functions, and
97 can be calculated whilst considering other factors such as age stratification (13).

98

99 The simplest form of epidemiological modelling is mechanistic, which deploys
100 compartments with interconnected per capita rates to describe the movement of
101 individuals between disease states (14). This field has since been further expanded
102 to include network analysis. Wallinga and Teunis applied this approach (15) to
103 estimate both the serial interval distribution (16) and the R_{eff} of Severe Acute
104 Respiratory Syndrome (SARS). In similar research, Routledge *et al.*, 2018 also used
105 network-based analysis to predict malaria elimination time scales (17). Together,
106 these studies further developed mathematical modelling used to calculate individual
107 reproduction numbers (18) while building on the established Reed-Frost model of
108 epidemic transmission (19)(20). And while these approaches are powerful, they are
109 highly reliant on granular data to infer geospatial disease spread at fine scales, yet
110 these data are not always available

111 Accordingly, this research sought to further analyse data in Bowman *et al.*, 2018 (21)
112 by describing the geospatial transmission of dengue and Zika using network-
113 reconstruction and the R_0 at the regional level.

114

115

116 **Methods**

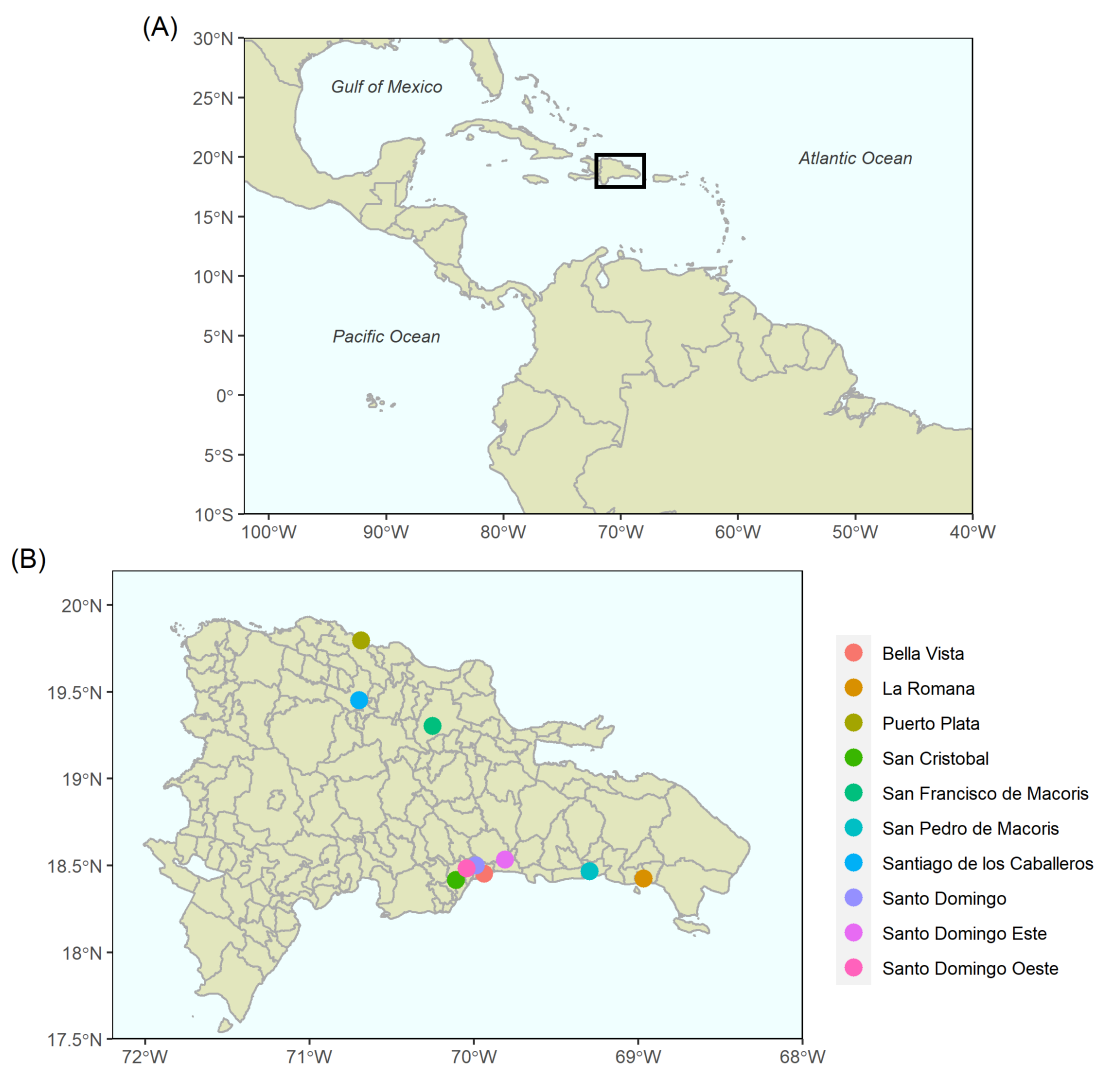
117 **Country context: Dominican Republic**

118 The Dominican Republic is a country in the Greater Antilles region of the Caribbean
119 (Fig 1).

120

121 **Fig 1. Mapping the Central and South American geographic area.**

122 **(A)** The location of the Dominican Republic on a continental scale. **(B)** Administrative municipal
123 boundaries map of the Dominican Republic and ten most populous cities (22). Dominican Republic
124 administrative boundaries, as at 2010, were obtained from the Humanitarian Data Exchange (23). The
125 shapefiles relied on ggplot package to realise the image (24).



126

127

128 It shares an island with Haiti (25), and according to demographic data released by
129 the World Bank in 2016, the total population was 10.63 million over an area of 48.7
130 km² (26).

131

132 The Dominican Republic has a long history of dengue endemicity, and recent
133 research showed that 98% of the Santo Domingo population was seropositive (27).
134 Between 2014-2016, dengue and Zika outbreaks occurred (21), during which large-
135 scale control measures were deployed across the country. A range of clinical and
136 epidemiological data was collected, providing an opportunity to study the passage of
137 the outbreaks at the population level.

138 **Datasets**

139 Surveillance data capturing cases of dengue, severe dengue and Zika were
140 extracted from the Dominican Republic healthcare database, Sistema Nacional de
141 Vigilancia Epidemiologica, for the years 2014 to 2016. Variables in the dataset
142 included suspected, probable, confirmed cases (28) (29), date of symptom onset,
143 epidemiological week of onset and date of notification. Demographic data were also
144 collected. To capture aggregate dengue disease states, the following outcome
145 variable labels were used: dengue (uncomplicated dengue); severe dengue
146 (complicated dengue); total dengue (complicated and uncomplicated dengue
147 combined). Suspected incident dengue and Zika cases were used to form all
148 outcome variables. Data were de-identified at source, underwent quality control, and
149 cleaned as described in Bowman *et al*, 2016 (30) and Bowman *et al*, 2018 (21).
150 Population census data, stratified by age and sex for the years 2015-2017, were

151 provided by the Oficina Nacional de Estadística. These data were used to
152 standardise attack rate calculations and to categorise data into five-year age bins. All
153 coding and analyses were performed in RStudio version 3.6.0. (31), and all figures
154 produced using the 'ggplot2' package (24).

155 **Mapping**

156 The municipal distribution of cases (per 10,000 population) for each outcome
157 variable was calculated as a function of case counts and population census data
158 (Equation 1). Maps were generated using shape files (23) with administrative
159 boundaries from 2010.

$$\text{Equation 1: Attack Rate} = \frac{\text{Case Count (per population of interest)}}{\text{Population of interest}} \times 10,000$$

160 **Statistical analyses**

161 Age and sex standardised attack rates by province were calculated using
162 established methodologies (32). The provincial populations were standardised to the
163 population characteristics of the Dominican Republic using data provided by the
164 Oficina Nacional de Estadística, with 95% confidence intervals calculated using
165 Equation 2:

$$\text{Equation 2: Standardised Attack Rate} \pm 1.96 \times \frac{\text{Standardised Attack Rate}}{\# \text{ of events}}$$

166 **Disease migration interval distribution**

167 The disease migration interval is a novel parameter, defined in this paper as the time
168 between symptom onset of the infector municipality and symptom onset of the
169 infectee municipality. To calculate the distribution of potential intervals, a matrix of
170 potential migration intervals was calculated by determining non-negative differences

171 between initial symptom onsets within each municipality. The resultant distribution of
172 intervals then informed the probability density of infector, i , transmitting infection to
173 the infectee, j . This interval reflects a higher order version of the serial interval, which
174 specifies the interval between symptom onset of the infector and infectee individual
175 pairs. The benefit of using the serial interval in estimates is the ability to account for
176 other important distributions of time in the transmission cycle, including the time from
177 symptom onset to infectiousness, intrinsic incubation period, extrinsic incubation
178 period and mosquito transmission rate (17). The probability density of the disease
179 migration interval was fitted to an exponential distribution after visualisation of the
180 data strongly indicated an exponential trend. Fitting the distribution was achieved
181 using maximum likelihood estimation with the exponential maximum likelihood
182 estimator, seen below, where $\widehat{\lambda}_n$ is the maximum likelihood estimator, n is the
183 number of independent observations, x is a variable from an independent and
184 identically distributed sample and $\sum_{j=1}^n x_j$ is the sum of all observations. The resultant
185 simulated distribution was used to calculate the Wallinga-Teunis matrix (Equation 3)

186
$$\text{Equation 3: } \widehat{\lambda}_n = \frac{n}{\sum_{j=1}^n x_j}$$

187 **Determining the transmission likelihood and network**

188 The cases with the earliest symptom onset of dengue or Zika recorded within each
189 municipality were identified, resulting in one case representing the earliest infection
190 event for each municipality. These were ordered by date of symptom onset for each
191 municipality, with no indication of the transmission chain present. Combination of this
192 time-ordered data with a simulation of the underlying disease migration interval
193 distribution produced a network of the most likely transmission chain events. This
194 was achieved by analysing a network of all potential pairwise infector-infectee

195 municipality pairs, and their transmission likelihoods, to isolate the most likely chain
196 of transmission events across municipalities. The network of potential infector-
197 infectee municipal pairs and their transmission likelihoods make up the Wallinga-
198 Teunis matrix (15), made with the 'IDSpatialStats' package (33). The matrix itself
199 represents likelihood-based estimation of who-infected-whom using observed dates
200 of initial symptom onset of each municipality. Each square provides the relative
201 likelihood, p_{ij} , that the infector municipality, i , has infected an infectee municipality, j ,
202 given the time difference in symptom onsets of each municipality, $t_i - t_j$. This time
203 difference is captured by the disease migration interval distribution. As such, the
204 relative likelihood that an infectee municipality, i , has been infected by an infector
205 municipality, j , is the likelihood of this pair, normalised by the likelihood that the
206 infector municipality, i , is infected by any other municipality, k . This analysis is based
207 around the theory that infection events between the potential pairs follow an
208 independent cascade model (34), where the upper triangular likelihood of the matrix
209 represents all the realistic pairwise transmission likelihoods of the infector-infectee
210 municipal pairs (15).

211 **Estimating time-varying municipal-specific reproduction numbers**

212 Municipal-specific reproduction numbers (R_m) were established using the produced
213 Wallinga-Teunis matrix wherein each column represents an infector municipality and
214 each row represents an infectee municipality. To calculate the R_m for an infector
215 municipality, j , we sum over all infectee municipalities, i , weighted by the relative
216 likelihood that the infectee municipality, i , has been infected by the infector
217 municipality, j . At a municipal level, this reflects the number of municipalities that the
218 infector municipality will go on to infect. The time-varying R_m was plotted over time

219 and a Generalised Additive Model smoothing spline was fitted to the data to
220 determine trends and smooth data noise.

221 **Ethics**

222 Ethical clearance was granted by the Pan American Health Organization Ethics
223 Review Committee (PAHO-ERC; Ref No. 2014-10-0023) and accepted by
224 Dominican Republic Ministry of Health. De-identified and aggregated data were used
225 throughout the study, no further ethical clearance was required.

226 **Results**

227 **Geostatistical Mapping**

228 Spatial mapping of Zika and dengue was used to determine the highest burden
229 areas for all disease outcomes across the Dominican Republic (Fig 2). Spatio-
230 temporal mapping displays incidence per 10,000 population (non-standardised),
231 while attack rates were standardised according to age and sex with accompanying
232 confidence intervals. These can be seen in S1 Table, for total dengue, and S2 Table,
233 for Zika.

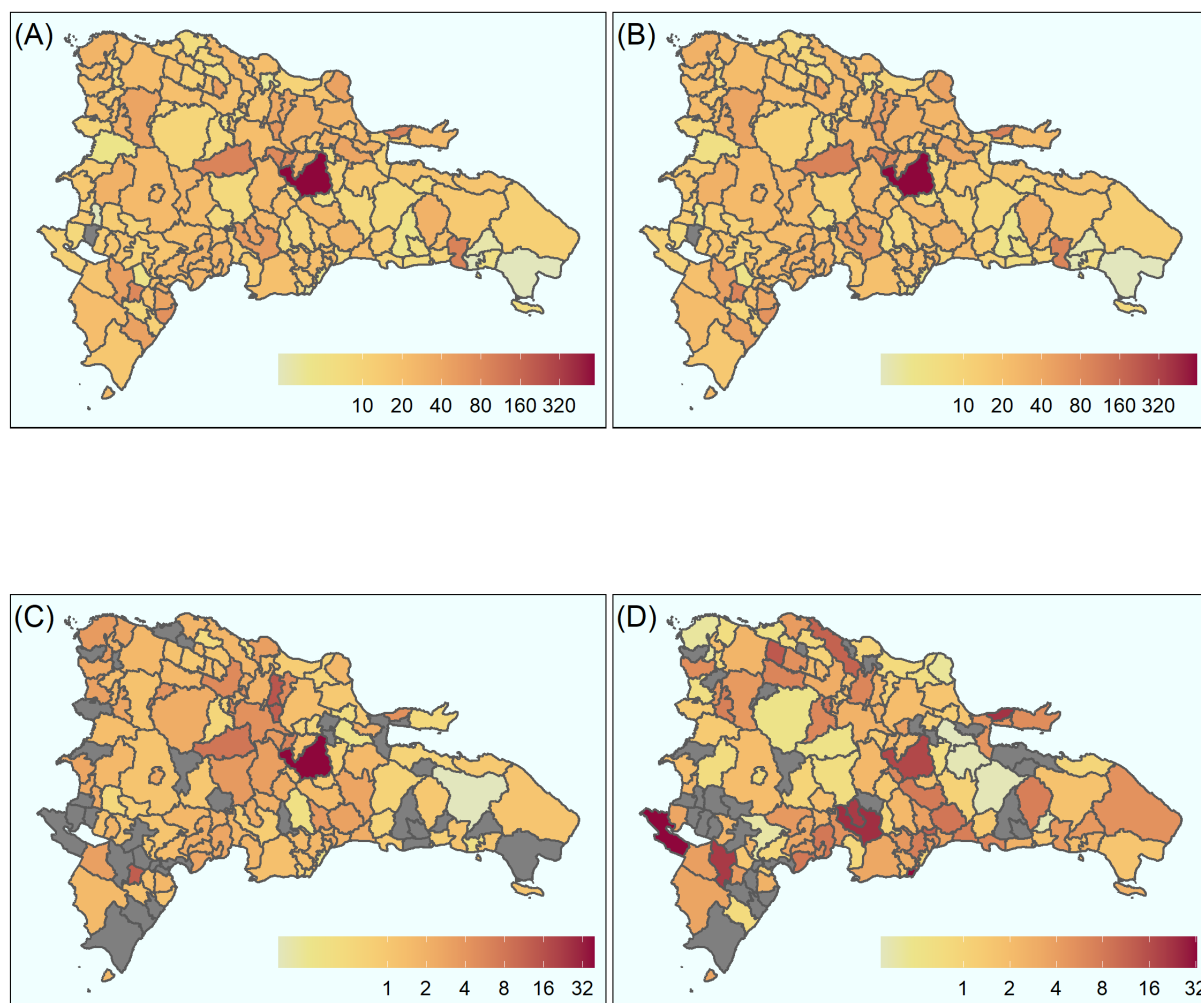
234 The municipality of Cotuí recorded the highest burden for each dengue outcome:
235 583 (uncomplicated dengue), 39 (complicated dengue) and 622 (dengue) cases per
236 10,000 population respectively (Fig 2), which equates to the largest dengue burden
237 of any municipality. Municipalities that also recorded high dengue burden include Las
238 Terrenas, Jarabacoa and Las Salinas recorded 99, 98 and 95 per 10,000 population
239 respectively (Fig 2B). The burden of complicated dengue was also high in Salcedo,
240 Villa Tapia and Jarabacoa with 15, 12 and 8 cases per 10,000 population
241 respectively (Fig 2C). The highest burden of Zika incident cases was recorded in the
242 west of the country, Jimaní, with 32 cases per 10,000 population (Fig 2D).

243

244 **Fig 2. Aggregated spatial distribution of cases over 2014-2016 epidemic period at the**
245 **municipal level.**

246 **(A)** Uncomplicated dengue, **(B)** Dengue, **(C)** Complicated dengue and **(D)** Zika. Continuous colour
247 scale from white (lowest) through to red (highest) for all images, scales vary. Grey areas indicate no
248 data for those municipalities. All counts per 10,000 population.

249



250

251 All four outcomes were also displayed over time and space, as seen in Figure 3.

252 Where the outcome was dengue, the highest burden municipalities were Jarabacoa,

253 Ramón Santana and La Cienega with 26, 23 and 20 cases per 10,000 population

254 respectively (Fig 3A), which occurred between epidemiological weeks 39-52 in 2015.

255 The highest burden of complicated dengue incident cases was recorded in Las

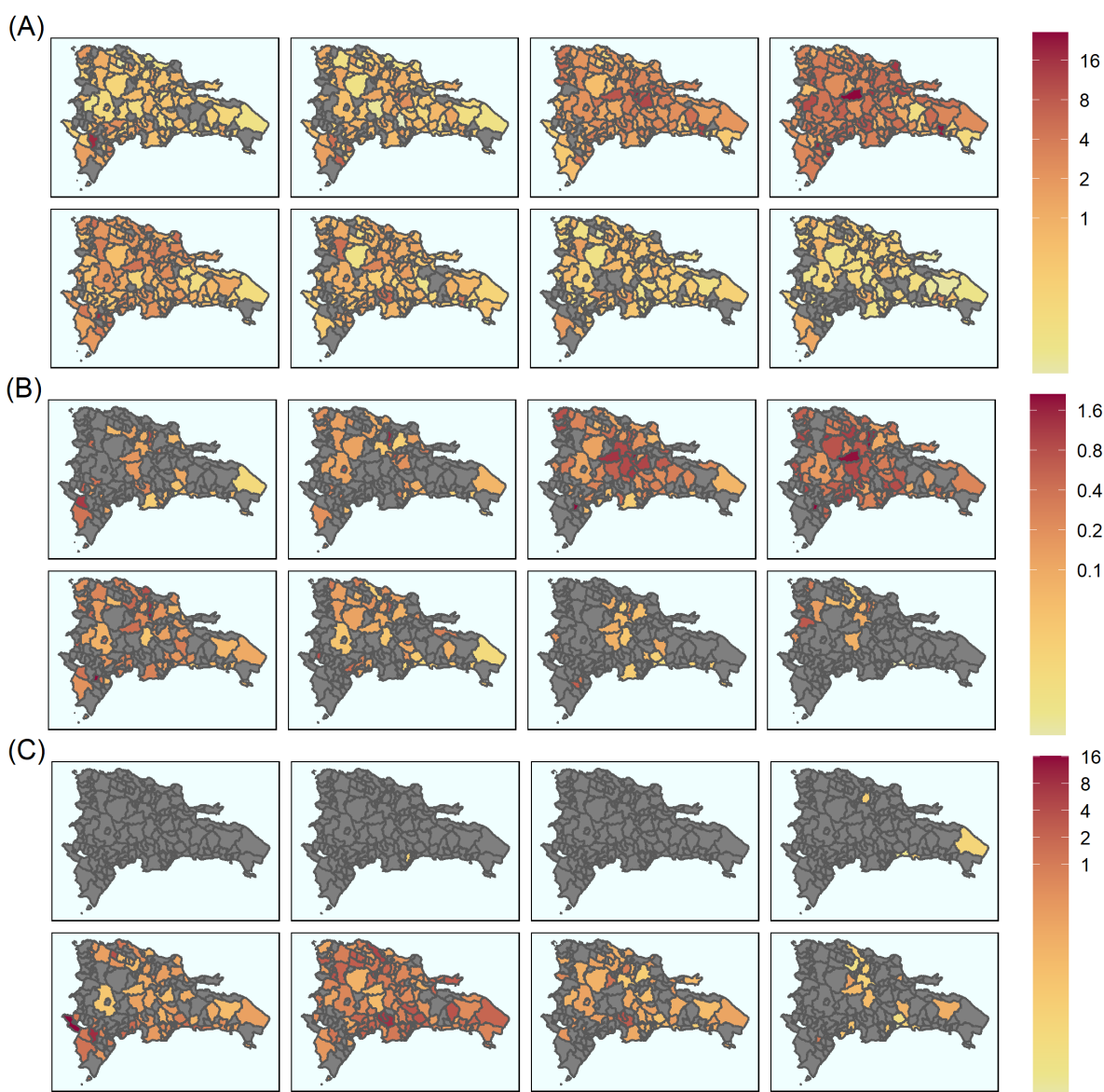
256 Salinas, Villa Tapia and Jarabacoa with 2 cases per 10,000 population each (Fig 3B)

257 within the same time period.

258

259 **Figure 3. Breakdown of aggregated spatial distribution of cases over 2014-2016 epidemic**
260 **period by epidemiological week at the municipal level.**

261 **(A)** Dengue cases over 2015 (top row) and 2016 (bottom row) **(B)** Complicated dengue cases over
262 2015 (top row) and 2016 (bottom row). **(C)** Zika cases over 2015 (top row) and 2016 (bottom row).
263 Continuous colour scale from white (lowest) through to red (highest) for all images. Scales vary as
264 shown. Grey areas indicate absence of data. All counts per 10,000 population. Dates are over
265 epidemiological weeks 1-52 for each year, where year is split into weeks 1 – 14, 14 – 27, 27 – 39, and
266 39 - 52.



267

268

269

270 The first suspected cases of Zika in 2015 were identified during epidemiological
271 weeks 14 – 27 and reported in San Cristobal (Fig 3C), while the highest burden of
272 Zika disease was reported in Jimaní (16 cases per 10,000 population:
273 epidemiological weeks 1-15). In 2016, the peak of Zika cases occurred between
274 epidemiological weeks 1 – 27 (Fig 3C). Throughout weeks 14 -27, the greatest
275 burden of Zika disease was recorded in Sabana Grande de Palenque, San José de
276 Ocoa and Sabana Larga (13, 9 and 6 cases per 10,000 population respectively) (Fig
277 3C).

278 **Transmission Dynamics**

279 A distribution of the disease migration interval, defined as the serial interval
280 calculated between municipalities, instead of individuals, was calculated to capture
281 the spatio-temporal disease dynamics of the dengue and Zika epidemics.

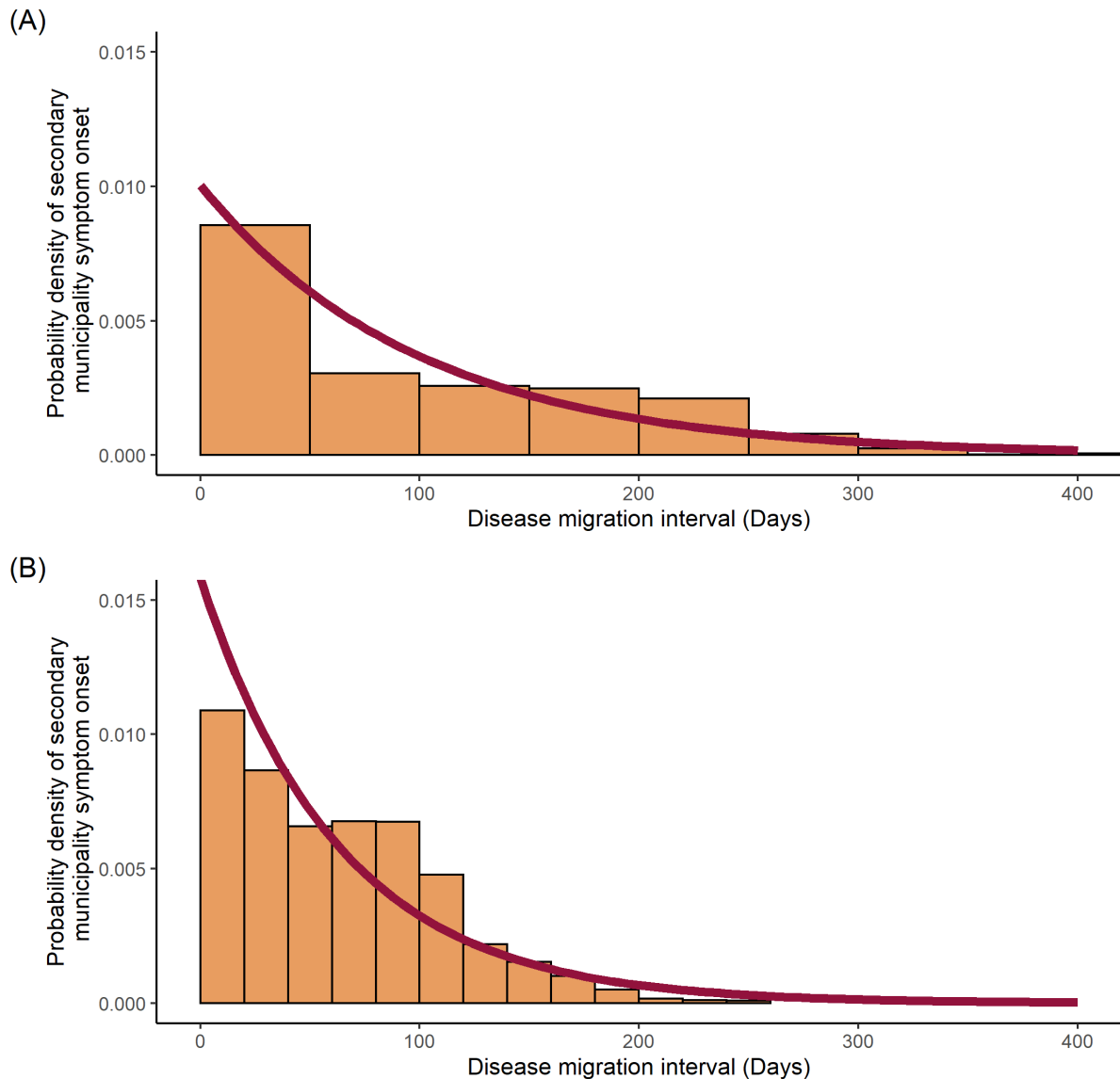
282 Each municipality was described as either infector or infectee, and the disease
283 migration interval referenced the time between symptom onsets in each of the
284 infector-infectee pairs. The results indicated an exponential distribution between the
285 probability density of secondary municipality symptom onset (infectee) and the time
286 of symptom onset in the infector municipality (Fig 4) for both dengue and Zika.
287 Probability of transmission from infector to infectee municipalities was elevated
288 (~0.1) for both dengue and Zika at the beginning of the epidemic. Probabilities for
289 dengue remained elevated for the first ~50 days before tailing off, whereas
290 probabilities for Zika were high for the first ~125 days before a gradual decline.

291

292 **Fig 4. Disease migration interval distribution fitted to exponential distribution.**

293 **(A)** Dengue cases, **(B)** Zika cases. Probability density histograms plotted of the disease migration
294 interval represent the distribution of time differences between initial symptom onset within each
295 municipality. Red line represents the maximum likelihood estimation of the exponential distribution
296 describing the data.

297



298

299 The mean disease migration interval, probability of transmission per day (expressed
300 as a rate), standard deviations and log likelihoods for the fitted distributions can be
301 seen in Table 1. The rate for the dengue distribution fitted to 0.01004 ($s =$
302 0.00009095) and the rate for Zika distribution was 0.01580 ($s = 0.0001793$).

303

304 **Table 1: Fitted disease migration interval distribution parameters.**

305 Mean disease migration interval calculated by the inverse of the estimated rate

| Parameter | Disease | |
|--|------------|-----------|
| | Dengue | Zika |
| Mean Disease Migration Interval (days) | 99.55 | 63.28 |
| Rate (probability of transmission/day) | 0.01004 | 0.01580 |
| Standard Deviation | 0.00009095 | 0.0001793 |
| Log Likelihood | -66950 | -39670 |

306

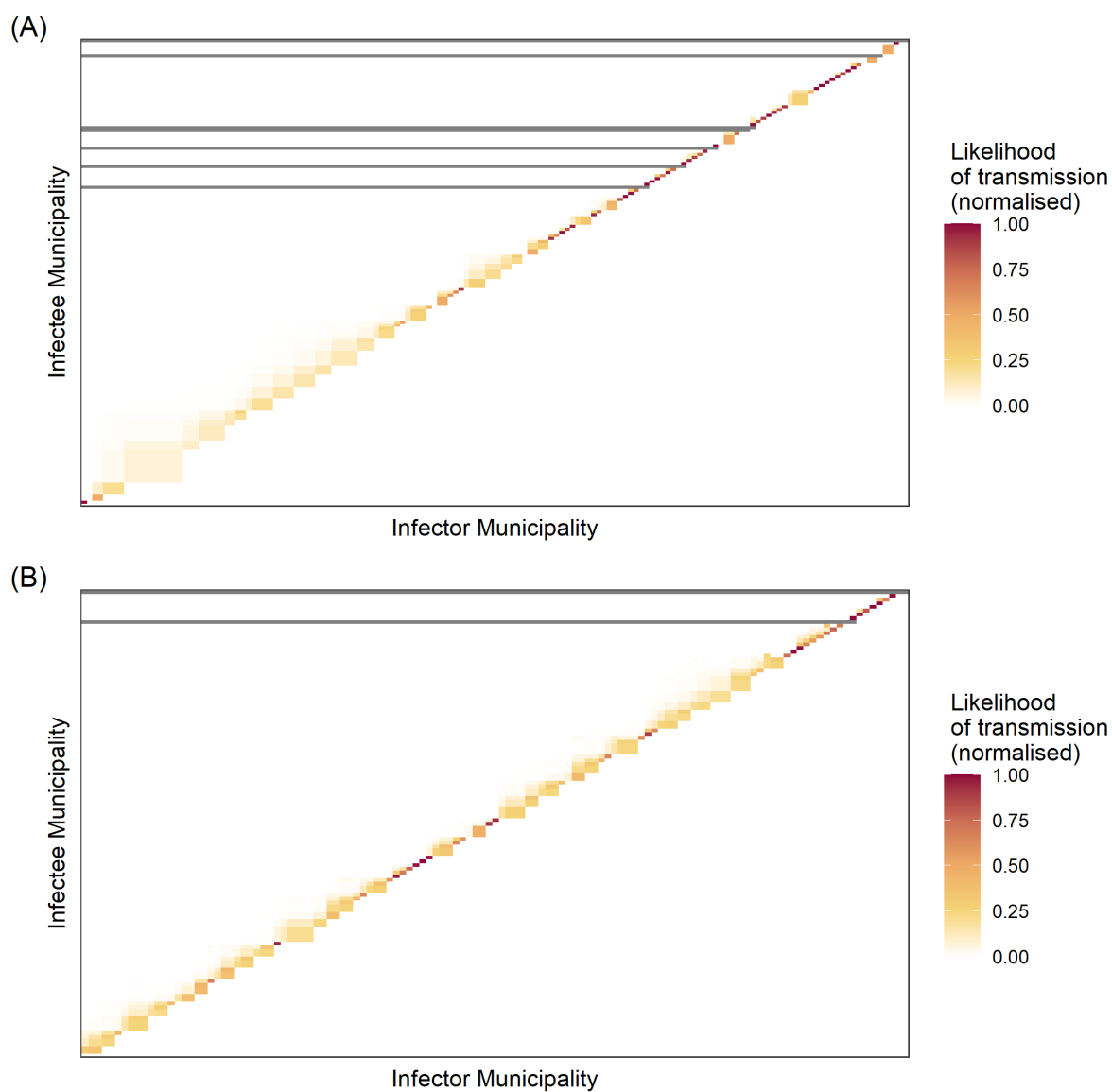
307 The disease migration intervals were used to produce the Wallinga-Teunis matrices
308 (Fig 5) along with the transmission network between infector-infectee municipal pairs
309 for dengue and Zika (Fig 6).

310

311 **Fig 5. Heatmaps of transmission likelihood of infector-infectee municipal pairs.**

312 **(A)** Dengue cases, **(B)** Zika cases. Heatmap X axis represents all possible infector municipalities
313 ordered by time of initial symptom onset date; Y axis represents all possible infectee municipalities
314 ordered by time of symptom onset. Each square represents the transmission likelihood for said
315 infector-infectee pair. Continuous scale from grey (0) to red (1) represents the normalised likelihood of
316 transmission, with grey squares indicating no likelihood of transmission. Dark grey lines represent
317 where infectee municipalities were unlikely to be infected by other observed municipalities, and so
318 infection occurred by unobserved disease migration.

319



320

321

322 **Fig 6. Municipal-specific, time-varying reproduction numbers. (A) Dengue cases, (B) Zika cases.**

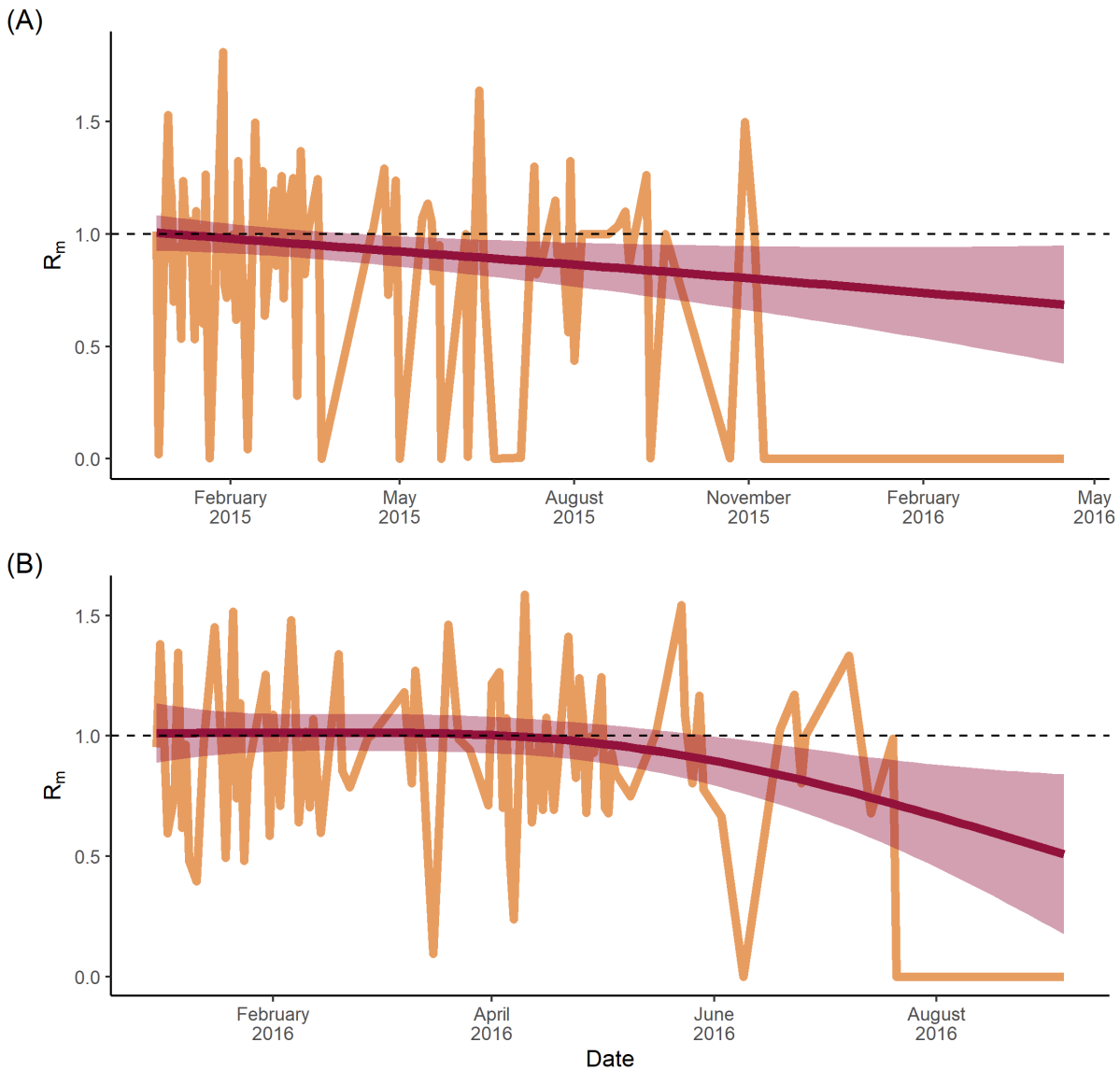
323 R_m is the number of municipalities a given infector municipality is likely to infect. Red line represents

324 the fitted Generalised Additive Model with smoothing splines and the 95% confidence interval seen as

325 a shaded grey area. Dashed line represents an $R_m = 1$.

326

327



328

329

330 During the exponential phase of the outbreak, the transmission likelihood matrix for
331 dengue was populated by lower likelihood transmission events compared with the
332 downward curve (Fig 5A). The matrix also identified six transmission events with a
333 0% likelihood of transmission between infector and infectee, all of which occurred in
334 the latter half of the transmission network. By comparison, the Zika transmission
335 likelihood matrix (Fig 5B) displayed one transmission event with a 0% likelihood of
336 transmission between infector and infectee, both of which also occurred at the end of

337 the transmission network. The transmission chain itself, however, was populated
338 with many high likelihood transmission events, with few pairwise infector-infectee
339 likelihoods below 50%. In other words, the likelihood of transmission between
340 infector and infectee municipalities increased over time for both dengue and Zika,
341 although probabilities were higher, earlier for Zika.

342 To obtain the time-varying R_m , the sum of the transmission likelihoods for each
343 infectee municipality was calculated and plotted over time (Fig 6). For dengue (Fig
344 6A), there was a linear trend starting at an R_m of ~ 1.0 in January 2015, which
345 decreased to a value of approximately 0.7 by April 2016. Zika (Fig 6B) showed a
346 consistent R_m of approximately 1 until just after April 2016 when it began to decline.
347 By September 2016, the R_m was ~ 0.4 . Grey areas in Figure 6 represent 95%
348 confidence intervals, which increase in size over time and correlate with greater
349 uncertainty as caseload declines.

350 Discussion

351 This research set out to explore the spatio-temporal trends of both dengue and Zika
352 epidemics between 2014-2016, and better define disease progression at a
353 municipality level across the Dominican Republic. Retrospective analysis of incident
354 case data was used to map the spatio-temporal distribution of cases. Transmission
355 likelihood matrices for infector-infectee pairs were generated, and the temporal trend
356 of R_m , was calculated to better understand transmission dynamics over time.

357

358 Dengue and Zika attack rates over the entire epidemic period varied substantially
359 across the country, likely a result of known transmission drivers (35). As shown in
360 Fig 3A, the peak of the dengue epidemic occurred during epidemiological weeks 39-
361 52 of 2015, which coincided with the implementation of control efforts, such as
362 fogging and public health campaigns (36), that may have stymied transmission (37).
363 By contrast, the peak of the Zika epidemic occurred between weeks 14-27 of 2016
364 (Fig 3D). Uncomplicated dengue attack rates were highest in the municipality of
365 Cotuí, at 622 cases per 10,000 population. No other municipality recorded >100
366 cases per 10,000 population. By contrast, the highest Zika attack rate was recorded
367 in the municipality of Jimaní, at 32 per 10,000 population, and equates to a ~20-fold
368 difference in incidence, demonstrating the continuing burden of dengue in the
369 Dominican Republic.

370

371 That Jimani recorded the highest Zika burden in the country is important not only due
372 to the relatively high caseload. Jimani has a population of 400,000 and shares a land
373 border with Haiti. It has undergone rapid expansion in recent decades and is a hub

374 for the movement of people and goods across the border (38). Considering the
375 detection of Zika in Haiti as early as 2014 (39), and that Jimani has become a
376 gateway for larger campaigns in Haiti (40), it is plausible that a number of Zika
377 importation and re-importation events occurred across both sides of the border. This
378 narrative is hypothetically confirmed by spatio-temporal mapping of Zika, showing
379 that western-most municipalities were affected greatly in the early phases of the
380 epidemic, while central and eastern regions were affected later. In light of this,
381 increased disease surveillance capacity in Jimaní could offer valuable early warning
382 for disease events across both sides of the border.

383

384 **Human Mobility and Infrastructure**

385 Human movement between neighbourhoods and commuter cities is known to
386 intensify dengue transmission (41) (42). Indeed, those provinces (Hermanas Mirabal,
387 Sánchez Ramirez and La Vega) that share these characteristics reported relatively
388 high uncomplicated dengue attack rates of 58, 48 and 38 cases per 10,000
389 population respectively (standardised for age and sex) (Table S1). For Hermanas
390 Mirabal and La Vega, high standardised attack rates correlate with their geographical
391 location. They are connected by primary roads DR-132 and DR-1 to San Francisco
392 de Macoris and Santiago De Los Caballeros respectively, two of the ten largest cities
393 by population (22)(43). Sánchez Ramirez province, which includes Cotuí
394 municipality, also places on one of the Dominican Republic's primary roads (DR-17)
395 between Santo Domingo and San Francisco de Macoris (43). Accordingly,
396 municipalities and towns along major commuter belts would likely benefit from
397 greater surveillance and public health capacity.

398 **Transmission Chains**

399 The disease migration interval, seen in Fig 4, describes the likelihood of secondary
400 (municipality) infection as a function of the distribution of disease migration intervals
401 for dengue and Zika. This reflects both the infectious period and human mobility. For
402 dengue, the migration interval was heavily skewed towards the first 50 days after
403 symptom onset, in contrast to Zika, which showed a broader distribution over the first
404 125 days. Given that both pathogens are transmitted via the same *Aedes* vectors,
405 this suggests a more significant role for sexually transmitted Zika (44), at least in
406 terms of transmission drivers throughout the first half of the epidemic.

407

408 Wallinga and Teunis (15) first proposed transmission likelihood matrices to identify
409 breaks in transmission chains. In real terms, this equates to the importation of cases,
410 better known as importation events (17). The international and intra-national
411 movement of people, and the influence of asymptomatic or unreported individuals,
412 can be captured using this methodology, which can help identify both the index case
413 and the source of importations/ reintroductions (17). Using absolute dengue cases,
414 this study identified six events that had 0% likelihood of transmission between
415 infector and infectee municipalities, in other words, six importation events (Fig 5A).
416 These occurred during the latter half of the outbreak and constituted a greater
417 number of importation events than the single event observed for Zika. While it is not
418 possible to tease out the origin of each event, the relative frequency of importation
419 events between diseases is not unexpected, given the assumed largely Zika
420 seronegative international population (due to the novel nature of the virus) vs. the
421 global endemicity of dengue (4). However, it is also possible that these events are
422 related to intra-national introductions, where individuals become infected through

423 inter-municipal contacts, reinforcing the importance of human mobility as a
424 transmission driver, but also potentially through asymptomatic or unreported
425 infections. The implicit assumption here is that a lower R_m requires a greater number
426 of importation events to sustain transmission, and vice versa.

427 The likelihood of transmission increased with time from symptom onset for both Zika
428 and dengue. Heatmaps for dengue (Fig 5A) showed increasing likelihood of
429 transmission between infector-infectee pairs, as a function of symptom onset over
430 time, likely indicating multiple smaller importation events in pockets of less well-
431 connected municipalities in rural areas. By contrast, Zika heatmaps demonstrated a
432 more consistent chain of transmission, most likely reflecting a continuous supply of
433 susceptibles infected by two modes of transmission. This is not atypical for Zika, and
434 has been observed in Rio de Janeiro, Brazil, where multiple introductions over a
435 short space of time led to a national crisis (45), since corroborated by phylogenetic
436 analysis linking the strain to French Polynesia (46).

437

438 **Municipal Reproduction Number (R_m)**

439 Defining transmission chains and generating time-varying reproduction numbers can
440 provide epidemiologists with valuable information that inform surveillance, control
441 and response. Methodologies used to generate these metrics are established (47)
442 (48) and have been used to determine the impact of cattle culls on foot-and-mouth
443 disease in the UK (47). However, only a small proportion of such probabilistic studies
444 have focussed on arboviruses, with Salje *et al.*, 2016 looking specifically at the
445 transmission dynamics of chikungunya (49). Independent cascade models (34) have
446 also been used to determine interactions across networks for infectious disease
447 outbreaks, yet these focussed on individuals' data (17), or were used in the context

448 of social network modelling (50). Where this study expands the field is in the use of
449 widely available data at a standard geospatial unit – the municipality – to understand
450 transmission dynamics of infectious diseases, using a newly-defined variant of the
451 basic reproduction number: R_m . The metric reflects the average number of
452 secondary infectee municipalities arising from a primary infector municipality, and
453 can be interpreted as follows: a municipality with an $R_m < 1$ reflects a lower likelihood
454 of infection to other municipalities, while on the other hand, an $R_m > 1$ represents
455 increased likelihood of infection to other municipalities.

456 In this study, dengue R_m was recorded as ~ 1.0 at the start of the epidemic, but
457 immediately and steadily declined throughout (Fig 7A), likely reflecting two factors: 1)
458 that there was a relatively small pool of susceptibles among a highly mobile
459 population in the early phases of the outbreak and 2) that this pool depleted fairly
460 rapidly as transmission spread from major urban areas before fading throughout less
461 mobile populations. By contrast, the Zika R_m (Fig 7B) remained constant at a value of
462 1.0 for four months between January and April, indicating a large pool of
463 susceptibles (51) that were infected steadily as the infection spread throughout the
464 population. Then in May, the R_m steadily declined below 1.0, suggesting both a
465 declining pool of susceptibles and a lower force of infection, perhaps as the virus
466 reached poorly connected rural areas. This transmission pattern has been observed
467 previously in French Polynesia and the Federated States of Micronesia, where high
468 seroprevalence of IgM antibodies in the local population suggested an acute
469 outbreak that infected three quarters of the population over a similar time scale: four
470 months from April – July 2007 (52), before tailing off.

471

472 The dengue R_m observed in this study provides evidence that vector-borne disease
473 spread between administrative locations, and so between populations, can still occur
474 when the effective municipal reproduction number is below 1. Conversely, Zika, as a
475 newly emerged infection, never recorded an R_m of 1.5 or higher, but maintained a
476 consistent R_m of approximately 1.0 during the growth and exponential phases of the
477 epidemic. This indicates that even in the presence of a huge pool of mobile
478 susceptibles, vector-borne and sexually transmitted diseases have an R_m 'ceiling',
479 pre-determined by the mode of transmission.

480 This novel metric clearly has benefit. It operates at a scale that broadly aligns with
481 existing geospatial data collection, thus addressing fundamental issues surrounding
482 data and spatial heterogeneity described elsewhere (30, 53, 54). Operationally, the
483 R_m can be used to identify high-burden and high-risk municipalities that necessitate
484 intervention, thereby aligning with early warning and response systems that operate
485 on similar spatial scales (30, 55). But it should be cautioned that the R_m should be
486 used as a floating metric to guide intervention, rather than a binary threshold used to
487 trigger intervention.

488

489

490 **Limitations**

491 Estimation of the time-varying R_m across the Dominican Republic required the
492 heuristic determination of an optimal distribution to describe the disease migration
493 interval distribution. This used the maximum likelihood estimation of an exponential
494 distribution fit to the data, as seen in Figure 4, which required the assumptions that
495 the data was identical, independent, and discrete, and fitted the interval probability

496 density distribution well. This was supported by the log likelihood for each of these
497 models, which were significantly negative, as shown in Table 1, implying a good fit to
498 the data. However, this and the standard deviation for Zika were lower than in
499 dengue, implying the model fitted the dengue epidemic data better than for Zika. This
500 could have been a product of more uncertainty in the exact distribution for Zika due
501 to the smaller sample size of disease migration intervals.

502 As suspected cases were used in all analyses, there was the potential for
503 misclassification between not only dengue and Zika, but also within the clinical
504 spectrum of dengue, as well as misreporting. All rates were calculated using 2016
505 census data, so there will be small discrepancies in precision when standardising
506 earlier datasets. Data paucity was an issue for those over 80 years of age resulting
507 in increased noise and less reliability across results within this age group.

508 Wallinga-Teunis matrices rely on the temporal product of the disease migration
509 interval distribution, so for these analyses, the distribution was reasonably assumed
510 to be exponential. Furthermore, the matrices themselves are dependent on the
511 completeness of the dataset regarding asymptomatic and unreported infections.
512 Consequently, the clarity of the transmission chain could be honed by incorporating
513 predictions on rates of asymptomatic or unreported cases.

514 The production of time-varying reproduction numbers assumed complete
515 susceptibility to the viruses within the population, which was valid for Zika, but less
516 so for dengue, although susceptibility to the serotype across the population was
517 patently high.

518 **Conclusions**

519 The results of this study characterised the Zika and dengue burden at the
520 municipality level in the Dominican Republic across 2014-16. Concentrated disease
521 burden within specific municipalities is likely due to the presence of significant
522 transport arteries, both within Dominican Republic and across the border to Haiti, as
523 a conduit for increased human movement and disease dispersal. Therefore,
524 increased surveillance of both vector and epidemiological data (51), alongside
525 targeted public health measures in these municipalities, is needed.

526 Furthermore, this research highlights the inception of a novel metric used to quantify
527 and determine transmission chains at the municipal level, which can be used to
528 characterise municipality risk, in terms of secondary transmission to neighbouring
529 municipalities. This approach can be generalised to countries worldwide, for multiple
530 infectious diseases, towards refining public health responses by targeting
531 municipalities that are significant contributors to disease spread.

532 Finally, this study further reinforces the importance of importation events that drive
533 transmission where R_m is below one, and conversely the significance of immune-
534 naïve populations in facilitating disease spread, which require fewer importation
535 events to sustain transmission. Future research should be focused on the refinement
536 of these novel metrics, and application of these to characterise municipalities based
537 on a risk-system, reflecting variation in R_m outputs.

538 **Acknowledgments**

539 The authors would like to acknowledge Dr Ronald Skewes-Ramm, Prof Axel Kroeger
540 and Prof Piero Olliaro for their work towards obtaining the original dataset.

541

542 **References**

- 543 (1) Davis LE, Beckham JD, Tyler KL. North American Encephalitic Arboviruses.
544 *Neurologic Clinics*. 2008;26(3):727–57.
- 545 (2) Beckham JD, Tyler KL. Arbovirus Infections. *CONTINUUM: Lifelong Learning*
546 *in Neurology*. 2015;21:1599–21:1
- 547 (3) Bowman LR, Donegan S, McCall PJ. Is Dengue Vector Control Deficient in
548 Effectiveness or Evidence?: Systematic Review and Meta-analysis. *PLoS*
549 *Neglected Tropical Diseases*. 2016;10: e0004551.
- 550 (4) Bhatt S, Gething PW, Brady OJ, Messina JP, Farlow AW, Moyes CL, et al.
551 The global distribution and burden of dengue. *Nature*. 2013;496(7446):504–7.
- 552 (5) Brady OJ, Gething PW, Bhatt S, Messina JP, Brownstein JS, Hoen AG, et al.
553 Refining the Global Spatial Limits of Dengue Virus Transmission by Evidence-
554 Based Consensus. Reithinger R, editor. *PLoS Neglected Tropical Diseases*.
555 2012;6(8):e1760.
- 556 (6) Pan American Health Organization, World Health Organization. PLISA Health
557 Information Platform for the Americas. Cases of Zika Virus Disease by
558 Country or Territory. Washington, D.C.: WHO; 2019.
- 559 (7) Franz A, Kantor A, Passarelli A, Clem R. Tissue Barriers to Arbovirus
560 Infection in Mosquitoes. *Viruses*. 2015;7(7):3741–67.
- 561 (8) Chye JK, Lim CT, Ng KB, Lim JMH, George R, Lam SK. Vertical
562 Transmission of Dengue. *Clinical Infectious Diseases*. 1997;25(6):1374–7.
- 563 (9) Pomar L, Vouga M, Lambert V, Pomar C, Hcini N, Jolivet A, et al. Maternal-
564 fetal transmission and adverse perinatal outcomes in pregnant women
565 infected with Zika virus: prospective cohort study in French Guiana. *BMJ*.
566 2018;k4431.

- 567 (10) Counotte MJ, Kim CR, Wang J, Bernstein K, Deal CD, Broutet NJN, et
568 al. Sexual transmission of Zika virus and other flaviviruses: A living systematic
569 review. von Seidlein L, editor. *PLOS Medicine*. 2018;15(7):e1002611.
- 570 (11) Rothman, K., & Greenland, S. (1998). *Modern Epidemiology*, 2nd
571 Edition. Philadelphia, PA: Lippincott Williams & Wilkins.
- 572 (12) admin. Epidemic theory (effective & basic reproduction numbers,
573 epidemic thresholds) & techniques for analysis of infectious disease data
574 (construction & use of epidemic curves, generation numbers, exceptional
575 reporting & identification of significant clusters). *Health Knowledge*. 2019.
- 576 (13) Diekmann O, Heesterbeek JAP, Metz JAJ. On the definition and the
577 computation of the basic reproduction ratio R_0 in models for infectious
578 diseases in heterogeneous populations. *Journal of Mathematical Biology*.
579 1990;28(4).
- 580 (14) A contribution to the mathematical theory of epidemics | Proceedings of
581 the Royal Society of London. Series A, Containing Papers of a Mathematical
582 and Physical Character. Proceedings of the Royal Society of London. Series
583 A, Containing Papers of a Mathematical and Physical Character. 2019.
- 584 (15) Wallinga J. Different Epidemic Curves for Severe Acute Respiratory
585 Syndrome Reveal Similar Impacts of Control Measures. *American Journal of*
586 *Epidemiology*. 2004;160(6):509–16.
- 587 (16) Last JM, ed. *A dictionary of epidemiology*. 4th ed. Oxford, England:
588 Oxford University Press, 2001.
- 589 (17) Routledge I, Chev ez JER, Cucunub a ZM, Rodriguez MG, Guinovart C,
590 Gustafson KB, et al. Estimating spatiotemporally varying malaria reproduction
591 numbers in a near elimination setting. *Nature Communications*. 2018;9(1).

- 592 (18) Fraser C. Estimating Individual and Household Reproduction Numbers
593 in an Emerging Epidemic. Galvani A, editor. *PLoS ONE*. 2007;2(8):e758.
- 594 (19) Frost WH. Some Conceptions of Epidemics in General. *American*
595 *Journal of Epidemiology*. 1976;103(2):141–51.
- 596 (20) Abbey H. An examination of the Reed-Frost theory of epidemics.
597 *Human biology*. 1952;24(3):201–33.
- 598 (21) Bowman LR, Rocklöv J, Kroeger A, Olliaro P, Skewes R. A comparison
599 of Zika and dengue outbreaks using national surveillance data in the
600 Dominican Republic. Harley D, editor. *PLOS Neglected Tropical Diseases*.
601 2018;12(11):e0006876.
- 602 (22) Butler RA. Largest cities in Dominican Republic. Mongabay.
603 Mongabay; 2001.
- 604 (23) Dominican Republic administrative boundaries (levels 0-5) -
605 Humanitarian Data Exchange. Humdata.org. 2014.
- 606 (24) Wickham. ggplot2: Elegant Graphics for Data Analysis. Springer-
607 Verlag. New York, 2016.
- 608 (25) Wikipedia Contributors. Dominican Republic. Wikipedia. Wikimedia
609 Foundation; 2019.
- 610 (26) World Bank. Dominican Republic: Country Profile.
611 <https://databank.worldbank.org>. 2018.
- 612 (27) Yamashiro T, Disla M, Petit A, Taveras D, Castro-Bello M, Lora-Orste
613 M, et al. Seroprevalence of IgG specific for dengue virus among adults and
614 children in Santo Domingo, Dominican Republic. *The American journal of*
615 *tropical medicine and hygiene*. 2004;71(2):138–43.

- 616 (28) WHO (2009) Dengue guidelines for diagnosis, treatment, prevention
617 and control. In: Ciceri K, Tissot P, editors. 2009 ed. Geneva: World Health
618 Organization.
- 619 (29) Zika virus disease. World Health Organization. 2016.
- 620 (30) Bowman LR, Tejada GS, Coelho GE, Sulaiman LH, Gill BS, McCall PJ,
621 et al. Alarm Variables for Dengue Outbreaks: A Multi-Centre Study in Asia
622 and Latin America. Hsieh Y-H, editor. *PLOS ONE*. 2016;11(6):e0157971.
- 623 (31) RStudio Team (2018). RStudio: Integrated Development for R.
624 RStudio, Inc., Boston, MA URL <http://www.rstudio.com/>.
- 625 (32) RPubs - Age Adjusted Rates. Rpubs.com. 2017. Available from:
626 <https://rpubs.com/bpoulin-CUNY/321735>
- 627 (33) Justin Lessler, Henrik Salje and John Giles (2018). IDSpatialStats:
628 Estimate Global Clustering in Infectious Disease. R package version 0.3.5.
629 <https://CRAN.R-project.org/package=IDSpatialStats>
- 630 (34) Kempe D, Kleinberg J, Tardos E. Maximizing the Spread of Influence
631 through a Social Network. 2003.
- 632 (35) Kilpatrick AM, Randolph SE. Drivers, dynamics, and control of
633 emerging vector-borne zoonotic diseases. *The Lancet*. [Online]
634 2012;380(9857): 1946–1955. Available from: doi:10.1016/s0140-
635 6736(12)61151-9 [Accessed: 23rd November 2019]
- 636 (36) Energía y Minas en jornada contra dengue junto a líderes comunitarios
637 Cotuí. Energía y Minas en jornada contra dengue junto a líderes comunitarios
638 Cotuí | Presidencia de la República Dominicana. 2016.
- 639 (37) Kenneson A, Beltrán-Ayala E, Borbor-Cordova MJ, Polhemus ME,
640 Ryan SJ, Endy TP, et al. Social-ecological factors and preventive actions

- 641 decrease the risk of dengue infection at the household-level: Results from a
642 prospective dengue surveillance study in Machala, Ecuador. Messer WB,
643 editor. *PLOS Neglected Tropical Diseases*. 2017;11(12):e0006150.
- 644 (38) The Relentless Rise of Two Caribbean Lakes Baffles Scientists.
645 Nationalgeographic.com. 2016.
- 646 (39) Lednicky J, Beau De Rochars VM, El Badry M, Loeb J, Telisma T,
647 Chavannes S, et al. Zika Virus Outbreak in Haiti in 2014: Molecular and
648 Clinical Data. Reithinger R, editor. *PLOS Neglected Tropical Diseases*.
649 2016;10(4):e0004687.
- 650 (40) A small town in the Dominican Republic becomes a gateway for relief
651 efforts in Haiti. UNICEF. 2010.
- 652 (41) Cosner C, Beier JC, Cantrell RS, Impoinvil D, Kapitanski L, Potts MD,
653 et al. The effects of human movement on the persistence of vector-borne
654 diseases. *Journal of Theoretical Biology*. [Online] 2009;258(4): 550–560.
655 Available from: doi:10.1016/j.jtbi.2009.02.016 [Accessed: 23rd March 2020]
- 656 (42) Lee S, Castillo-Chavez C. The role of residence times in two-patch
657 dengue transmission dynamics and optimal strategies. *Journal of Theoretical*
658 *Biology*. [Online] 2015;374: 152–164. Available from:
659 doi:10.1016/j.jtbi.2015.03.005 [Accessed: 23rd March 2020]
- 660 (43) 2.3 Dominican Republic Road Network - Logistics Capacity
661 Assessment - Digital Logistics Capacity Assessments. [Online] Logcluster.org.
662 Available from:
663 [https://dlca.logcluster.org/display/public/DLCA/2.3+Dominican+Republic+Ro](https://dlca.logcluster.org/display/public/DLCA/2.3+Dominican+Republic+Road+Network)
664 [ad+Network](https://dlca.logcluster.org/display/public/DLCA/2.3+Dominican+Republic+Road+Network) [Accessed: 23rd April 2020]

- 665 (44) Sakkas H, Bozidis P, Giannakopoulos X, Sofikitis N, Papadopoulou C.
666 An Update on Sexual Transmission of Zika Virus. *Pathogens*. 2018;7(3):66.
- 667 (45) Zanluca C, Melo VCA de, Mosimann ALP, Santos GIV dos, Santos
668 CND dos, Luz K. First report of autochthonous transmission of Zika virus in
669 Brazil. *Memórias do Instituto Oswaldo Cruz* [Internet]. 2015 Jun 9 [cited 2020
670 Jun 13];110(4):569–72. Available from:
671 <https://www.ncbi.nlm.nih.gov/pmc/articles/PMC4501423/>
- 672 (46) Campos GS, Bandeira AC, Sardi SI. Zika Virus Outbreak, Bahia,
673 Brazil. *Emerging Infectious Diseases*. 2015;21(10):1885–6.
- 674 (47) Ferguson NM, Donnelly CA, Anderson RM. Transmission intensity and
675 impact of control policies on the foot and mouth epidemic in Great Britain.
676 *Nature*. 2001;413(6855):542–8.
- 677 (48) Jombart T, Cori A, Didelot X, Cauchemez S, Fraser C, Ferguson N.
678 Bayesian Reconstruction of Disease Outbreaks by Combining Epidemiologic
679 and Genomic Data. Tanaka MM, editor. *PLoS Computational Biology*.
680 2014;10(1):e1003457.
- 681 (49) Salje H, Lessler J, Paul KK, Azman AS, Rahman MW, Rahman M, et
682 al. How social structures, space, and behaviors shape the spread of infectious
683 diseases using chikungunya as a case study. *Proceedings of the National
684 Academy of Sciences*. 2016;113(47):13420–5.
- 685 (50) Kucharski AJ, Kwok KO, Wei VWI, Cowling BJ, Read JM, Lessler J, et
686 al. The Contribution of Social Behaviour to the Transmission of Influenza A in
687 a Human Population. Ghedin E (ed.) *PLoS Pathogens*. [Online] 2014;10(6):
688 e1004206. Available from: doi:10.1371/journal.ppat.1004206 [Accessed: 26th
689 April 2020]

- 690 (51) Zika-Epidemiological Report Dominican Republic. 2017.
- 691 (52) Zika Virus Outbreak on Yap Island, Federated States of Micronesia |
692 NEJM. *New England Journal of Medicine*. 2009.
- 693 (53) Olliaro P, Fouque F, Kroeger A, Bowman L, Velayudhan R et al.
694 Improved tools and strategies for the prevention and control of arboviral
695 diseases: A research-to-policy forum. *PLoS Neglected Tropical Diseases*.
696 2018;12: e0005967.
- 697 (54) Bowman LR, Runge-Ranzinger S, McCall PJ. Assessing the
698 Relationship between Vector Indices and Dengue Transmission: A Systematic
699 Review of the Evidence. *PLoS Neglected Tropical Diseases*. 2014;8: e2848.
- 700 (55) Hussain-Alkhateeb L, Kroeger A, Olliaro P, Rocklöv J, Sewe MO, et al.
701 Early warning and response system (EWARS) for dengue outbreaks: Recent
702 advancements towards widespread applications in critical settings. *PLoS*
703 *ONE*. 2018;13: e0196811.
- 704
- 705

706 **Supplementary Material**

707 **Table S1. Age and sex standardised attack rates of dengue by province.**

708 Respective lower and upper 95% confidence intervals are shown.

| Province of Residence | Standardised Attack Rate | Lower 95% Confidence Interval | Upper 95% Confidence Interval |
|------------------------|--------------------------|-------------------------------|-------------------------------|
| Hermanas Mirabal | 58.07921 | 57.85644 | 58.30198 |
| San José de Ocoa | 49.20185 | 48.846 | 49.5577 |
| Sánchez Ramírez | 48.49327 | 48.36307 | 48.62347 |
| La Vega | 38.80868 | 38.75974 | 38.85763 |
| Santiago Rodríguez | 38.07062 | 37.71529 | 38.42594 |
| Barahona | 33.09816 | 33.00535 | 33.19097 |
| Duarte | 31.81822 | 31.75006 | 31.88637 |
| Distrito Nacional | 29.4844 | 29.4635 | 29.5053 |
| María Trinidad Sánchez | 29.00574 | 28.86502 | 29.14646 |
| Hato Mayor | 25.61707 | 25.3909 | 25.84324 |
| Monseñor Nouel | 25.23547 | 25.12044 | 25.35049 |
| Azua | 24.86613 | 24.7818 | 24.95045 |
| San Juan | 23.91775 | 23.83329 | 24.00222 |
| Santiago | 23.75802 | 23.73761 | 23.77842 |
| Santo Domingo | 23.2899 | 23.28279 | 23.29702 |
| Monte Cristi | 22.7714 | 22.59429 | 22.94851 |
| Puerto Plata | 20.60499 | 20.5439 | 20.66609 |
| Pedernales | 19.88183 | 19.3406 | 20.42306 |
| Dajabón | 19.72239 | 19.43175 | 20.01304 |
| Españolat | 18.54744 | 18.4613 | 18.63359 |
| Valverde | 18.18141 | 18.06645 | 18.29636 |
| Peravia | 18.0829 | 17.9858 | 18.18001 |
| Samaná | 17.80326 | 17.62246 | 17.98406 |
| San Cristóbal | 16.987 | 16.95681 | 17.01718 |
| Baoruco | 14.92881 | 14.7493 | 15.10832 |
| El Seibo | 14.84969 | 14.64179 | 15.05759 |
| Monte Plata | 14.07224 | 13.9758 | 14.16868 |
| San Pedro de Macorís | 12.76493 | 12.70028 | 12.82958 |
| Elías Piña | 11.80936 | 11.54331 | 12.07541 |

| | | | |
|---------------|----------|----------|----------|
| Independencia | 11.66837 | 11.36343 | 11.9733 |
| La Altagracia | 11.36612 | 11.30525 | 11.42699 |
| La Romana | 4.964588 | 4.891426 | 5.03775 |

709

710 **Table S2. Age and sex standardised attack rates of Zika by province. Respective lower**
 711 **and upper 95% confidence intervals are shown.**

| Province of Residence | Standardised Rate | Attack | Lower 95% Confidence Interval | Upper 95% Confidence Interval |
|-----------------------|-------------------|--------|-------------------------------|-------------------------------|
| San José de Ocoa | 21.160 | | 20.773 | 21.548 |
| Independencia | 13.370 | | 13.015 | 13.724 |
| Distrito Nacional | 9.334 | | 9.315 | 9.353 |
| Santo Domingo | 7.291 | | 7.284 | 7.298 |
| Valverde | 7.288 | | 7.171 | 7.405 |
| Puerto Plata | 6.348 | | 6.288 | 6.408 |
| Azua | 5.855 | | 5.756 | 5.954 |
| San Cristóbal | 5.681 | | 5.649 | 5.714 |
| Hato Mayor | 5.430 | | 5.193 | 5.666 |
| Españolat | 5.358 | | 5.273 | 5.444 |
| Samaná | 5.032 | | 4.846 | 5.218 |
| La Altagracia | 5.003 | | 4.940 | 5.067 |
| Santiago Rodríguez | 4.326 | | 3.957 | 4.694 |
| Dajabón | 3.435 | | 3.115 | 3.756 |
| Monte Plata | 3.138 | | 3.026 | 3.250 |
| Peravia | 3.034 | | 2.932 | 3.137 |
| Pedernales | 3.000 | | 2.347 | 3.653 |
| Santiago | 2.684 | | 2.665 | 2.703 |
| Monseñor Nouel | 2.588 | | 2.473 | 2.704 |
| La Romana | 2.465 | | 2.390 | 2.541 |
| Hermanas Mirabal | 2.254 | | 2.033 | 2.475 |
| La Vega | 1.920 | | 1.872 | 1.969 |
| Elías Piña | 1.770 | | 1.337 | 2.204 |
| Sánchez Ramírez | 1.766 | | 1.628 | 1.905 |
| El Seibo | 1.680 | | 1.445 | 1.915 |
| Duarte | 1.622 | | 1.555 | 1.690 |
| Barahona | 1.620 | | 1.507 | 1.734 |

| | | | |
|------------------------|-------|-------|-------|
| San Juan | 1.531 | 1.428 | 1.635 |
| San Pedro de Macorís | 1.388 | 1.324 | 1.453 |
| Monte Cristi | 1.334 | 1.159 | 1.508 |
| María Trinidad Sánchez | 1.223 | 1.082 | 1.364 |
| Baoruco | 1.116 | 0.897 | 1.334 |

712

713 **Table S3. Age and sex standardised attack rates of total dengue by municipality.**

714 Respective lower and upper 95% confidence intervals are shown.

| Municipality of Residence | Standardised Attack Rate (per 10,000 population) | Lower 95% confidence interval | Higher 95% confidence interval |
|---------------------------|--|-------------------------------|--------------------------------|
| Jarabacoa | 99.80548 | 99.46349 | 100.1475 |
| Ramón Santana | 89.70886 | 87.66433 | 91.75339 |
| Fantino | 89.63507 | 88.68542 | 90.58471 |
| Jima Abajo | 85.40193 | 84.76547 | 86.03838 |
| Las Salinas | 84.32807 | 80.65512 | 88.00103 |
| Villa Tapia | 76.6103 | 75.76196 | 77.45864 |
| La Ciénaga | 61.26256 | 59.35661 | 63.16851 |
| San José De Ocoa | 56.34095 | 55.80489 | 56.87701 |
| Salcedo | 55.89944 | 55.37521 | 56.42366 |
| Cotuí | 52.90987 | 52.64865 | 53.17108 |
| Villa González | 50.6077 | 50.0964 | 51.11899 |
| Cabrera | 49.68283 | 48.84336 | 50.5223 |
| San Ignacio De Sabaneta | 47.72824 | 47.11682 | 48.33966 |
| Tenares | 46.91322 | 46.17762 | 47.64882 |
| Sabana Larga | 44.4343 | 42.25702 | 46.61158 |
| Mella | 43.95176 | 39.41779 | 48.48573 |
| Villa Rivas | 42.39822 | 41.82511 | 42.97133 |
| Enriquillo | 40.41046 | 39.09039 | 41.73054 |
| Barahona | 39.92808 | 39.71827 | 40.13789 |
| Cayetano Germosen | 36.2763 | 33.31374 | 39.23887 |
| Castillo | 34.20579 | 32.9165 | 35.49509 |
| La Mata | 33.82985 | 33.32753 | 34.33217 |
| Villa Los Almácigos | 33.65289 | 31.96162 | 35.34416 |
| Monte Cristi | 33.55048 | 32.73864 | 34.36232 |
| Tabara Arriba | 33.22181 | 32.13656 | 34.30706 |
| San Francisco De Macorís | 33.00379 | 32.89722 | 33.11036 |
| Fundación | 32.87632 | 30.57498 | 35.17766 |
| Arenoso | 31.6767 | 30.29701 | 33.0564 |
| Las Matas De Farfán | 31.04217 | 30.60128 | 31.48306 |
| Hato Mayor del Rey | 30.47963 | 30.16355 | 30.79572 |
| Rancho Arriba | 29.52567 | 27.21086 | 31.84048 |

| | | | |
|------------------------------|----------|----------|----------|
| Bonao | 28.53502 | 28.3801 | 28.68995 |
| Azua | 28.52515 | 28.32759 | 28.7227 |
| Nagua | 28.4949 | 28.23753 | 28.75227 |
| Juan De Herrera | 28.18342 | 26.64899 | 29.71785 |
| Santo Domingo Norte | 27.69646 | 27.66495 | 27.72797 |
| Bohechío | 26.75297 | 24.73621 | 28.76974 |
| Santo Domingo Oeste | 26.73674 | 26.68871 | 26.78477 |
| Licey Al Medio | 26.71107 | 25.89305 | 27.5291 |
| La Vega | 26.66034 | 26.58019 | 26.74048 |
| Puerto Plata | 26.08195 | 25.95665 | 26.20724 |
| Villa Vázquez | 25.68708 | 24.28856 | 27.0856 |
| Las Guaranas | 25.51559 | 24.12641 | 26.90478 |
| Santiago | 25.51513 | 25.48629 | 25.54397 |
| Sabana Yegua | 25.48877 | 24.52804 | 26.4495 |
| Pueblo Viejo | 25.37458 | 23.77025 | 26.97891 |
| Sosua | 24.61137 | 24.21918 | 25.00355 |
| Vicente Noble | 24.41566 | 23.59058 | 25.24075 |
| Santo Domingo Este | 24.37927 | 24.3605 | 24.39804 |
| Guayubín | 24.11644 | 23.56681 | 24.66607 |
| San Juan | 24.09508 | 23.94515 | 24.245 |
| El Pino | 24.01008 | 20.64867 | 27.37149 |
| Samaná | 23.23657 | 22.92029 | 23.55285 |
| Loma De Cabrera | 23.13504 | 21.94176 | 24.32832 |
| Yamasá | 22.79716 | 22.48249 | 23.11182 |
| Mao | 22.63276 | 22.37781 | 22.8877 |
| Piedra Blanca | 22.60557 | 21.71943 | 23.4917 |
| San Cristóbal | 22.14353 | 22.06685 | 22.22022 |
| Pepillo Salcedo (Manzanillo) | 22.08113 | 20.02022 | 24.14204 |
| Pedernales | 21.8935 | 21.17831 | 22.60869 |
| Peralta | 21.65648 | 20.44372 | 22.86924 |
| Laguna Salada | 21.46498 | 20.67118 | 22.25878 |
| Dajabón | 21.4077 | 20.74168 | 22.07371 |
| Padre Las Casas | 21.26606 | 20.37922 | 22.1529 |
| Cambita Garabitos | 21.24353 | 20.68836 | 21.79869 |
| Las Yayas de Viajama | 21.15576 | 20.11913 | 22.1924 |
| Moca | 20.47941 | 20.36602 | 20.59279 |
| Bisonó | 20.39457 | 19.94033 | 20.84881 |
| Los Alcarrizos | 20.32296 | 20.26306 | 20.38286 |
| Jaquimeyes | 20.25948 | 15.84741 | 24.67154 |
| Bajos De Haina | 20.13347 | 19.99304 | 20.2739 |
| Duvergé | 19.97502 | 18.46921 | 21.48083 |
| Baní | 19.94201 | 19.82603 | 20.05799 |
| Río San Juan | 19.8371 | 18.44851 | 21.2257 |
| Los Hidalgos | 19.81484 | 18.04952 | 21.58016 |

| | | | |
|-------------------------|----------|----------|----------|
| El Peñón | 18.89265 | 14.26395 | 23.52135 |
| Consuelo | 18.70276 | 18.0918 | 19.31372 |
| Cabral | 18.43594 | 17.23146 | 19.64042 |
| El Factor | 17.73807 | 16.92954 | 18.54659 |
| Tamboril | 17.57079 | 17.19646 | 17.94513 |
| Neiba | 17.0401 | 16.54895 | 17.53126 |
| Sabana De La Mar | 16.99978 | 15.80979 | 18.18976 |
| Monción | 16.88539 | 15.04676 | 18.72402 |
| Partido | 16.86654 | 13.86123 | 19.87185 |
| Pedro Brand | 16.85734 | 16.64279 | 17.07189 |
| Miches | 16.80266 | 15.95822 | 17.6471 |
| Villa Jaragua | 16.42362 | 14.81411 | 18.03314 |
| Tamayo | 15.92995 | 15.27947 | 16.58042 |
| Villa Montellano | 15.47258 | 14.49432 | 16.45085 |
| Sabana Grande De Boya | 15.02801 | 14.45046 | 15.60555 |
| Las Charcas | 14.93584 | 13.30949 | 16.56218 |
| Pimentel | 14.58927 | 13.48946 | 15.68907 |
| Santa Cruz de El Seibo | 14.26439 | 13.98758 | 14.54121 |
| Oviedo | 14.10137 | 11.79814 | 16.40459 |
| Yaguaje | 14.01328 | 13.60936 | 14.41719 |
| Villa Isabela | 13.76339 | 12.5372 | 14.98958 |
| Bánica | 13.58093 | 10.6233 | 16.53855 |
| Comendador | 13.54216 | 12.95233 | 14.132 |
| Estebanía | 13.51789 | 10.20601 | 16.82978 |
| Los Ríos | 13.45697 | 11.05918 | 15.85476 |
| San Antonio De Guerra | 13.36972 | 12.99537 | 13.74407 |
| Hondo Valle | 12.9614 | 11.26777 | 14.65502 |
| El Cercado | 12.85318 | 11.92014 | 13.78623 |
| Castañuelas | 12.64453 | 11.40537 | 13.8837 |
| Esperanza | 12.28771 | 11.99754 | 12.57787 |
| Higüey | 12.26903 | 12.20223 | 12.33583 |
| San José De Las Matas | 12.16991 | 11.65137 | 12.68846 |
| Cevicos | 11.80692 | 10.36058 | 13.25327 |
| Guananico | 11.76473 | 7.921584 | 15.60787 |
| Las Terrenas | 11.5613 | 10.5313 | 12.59131 |
| Polo | 11.50662 | 8.687499 | 14.32574 |
| El Llano | 10.96535 | 9.174346 | 12.75636 |
| Constanza | 10.89276 | 10.57411 | 11.21142 |
| Sánchez | 10.68355 | 9.908002 | 11.45909 |
| Gaspar Hernández | 10.62947 | 10.10862 | 11.15031 |
| San Pedro De Macoris | 10.51065 | 10.41208 | 10.60922 |
| Vallejuelo | 10.47525 | 8.895904 | 12.05459 |
| Monte Plata | 10.4132 | 10.00501 | 10.8214 |
| Santo Domingo de Guzmán | 10.2152 | 10.20796 | 10.22244 |

| | | | |
|---------------------------|----------|----------|----------|
| Maimón | 9.692846 | 8.692952 | 10.69274 |
| Boca Chica | 9.677225 | 9.563648 | 9.790802 |
| Nizao | 9.432479 | 8.772205 | 10.09275 |
| Janico | 9.330062 | 8.110934 | 10.54919 |
| Imbert | 9.234064 | 8.329125 | 10.139 |
| Galván | 9.135609 | 8.016497 | 10.25472 |
| Paraíso | 9.129083 | 8.076553 | 10.18161 |
| Puñal | 8.974125 | 8.534393 | 9.413857 |
| Jimaní | 8.950573 | 8.027251 | 9.873896 |
| Altamira | 8.907666 | 7.743731 | 10.0716 |
| Villa Altigracia | 8.794135 | 8.593711 | 8.99456 |
| Luperón | 8.506038 | 7.315192 | 9.696883 |
| Bayaguana | 8.400559 | 7.81252 | 8.988598 |
| Juan Santiago | 8.099237 | 0.161985 | 16.03649 |
| Guayabal | 7.956494 | 4.057812 | 11.85518 |
| La Descubierta | 7.743339 | 5.575204 | 9.911474 |
| Restauración | 7.602448 | 5.473763 | 9.731134 |
| Las Matas De Santa Cruz | 7.171422 | 5.414424 | 8.928421 |
| La Romana | 7.07478 | 6.940153 | 7.209407 |
| El Valle | 7.068844 | 4.297857 | 9.839831 |
| Sabana Iglesia | 6.993931 | 5.470808 | 8.517054 |
| Peralvillo | 6.794156 | 5.906386 | 7.681926 |
| Eugenio Maria De Hostos | 6.708117 | 3.42114 | 9.995094 |
| Guayacanes | 6.471506 | 5.203091 | 7.739922 |
| Pedro Santana | 5.994467 | 3.057178 | 8.931756 |
| Los Cacaos | 5.894755 | 4.244224 | 7.545287 |
| Quisqueya | 5.81898 | 4.868546 | 6.769413 |
| Jamao Al Norte | 5.21818 | 2.661272 | 7.775088 |
| Los Llanos | 4.373047 | 3.51593 | 5.230164 |
| San Gregorio De Nigua | 4.073791 | 3.503461 | 4.644122 |
| Sabana Grande De Palenque | 3.363778 | 2.264944 | 4.462612 |
| Cristóbal | 3.129884 | 1.085027 | 5.174742 |
| Guaymate | 2.681658 | 1.630448 | 3.732868 |
| Villa Hermosa | 2.480608 | 2.286128 | 2.675088 |
| San Rafael Del Yuma | 2.220714 | 1.495281 | 2.946148 |
| Postrer Río | 2.05144 | -1.96938 | 6.072261 |

716 **Table S4. Age and sex standardised attack rates of Zika per municipality.** Respective
717 lower and upper 95% confidence intervals are shown.

| Municipality of Residence | Standardised Attack Rate (per 10,000 population) | Lower 95% confidence interval | Higher 95% confidence interval |
|---------------------------|--|-------------------------------|--------------------------------|
| Jimani | 32.3110079 | 31.199962764 | 33.4220531 |
| Sabana Grande De Palenque | 31.1635729 | 29.988945902 | 32.3381999 |
| San Jose De Ocoa | 25.6569420 | 25.085491882 | 26.2283920 |
| Sabana Larga | 24.9988175 | 22.419992094 | 27.5776429 |
| Mella | 22.1680593 | 16.736884748 | 27.5992338 |
| Laguna Salada | 13.8565123 | 13.057725133 | 14.6552995 |
| Los Alcarrizos | 11.9794935 | 11.915862626 | 12.0431245 |
| Puerto Plata | 11.4667693 | 11.347854645 | 11.5856839 |
| Azua | 8.8848804 | 8.658719782 | 9.1110410 |
| Yamasa | 8.5608894 | 8.179540673 | 8.9422381 |
| Santo Domingo Norte | 8.4313207 | 8.399107466 | 8.4635339 |
| Sabana Iglesia | 8.3813333 | 7.012382194 | 9.7502844 |
| Villa Los Almacigos | 7.8986302 | 5.963465804 | 9.8337946 |
| Hato Mayor del Rey | 7.5330013 | 7.204897261 | 7.8611054 |
| San Cristobal | 7.3748640 | 7.296305708 | 7.4534224 |
| Santo Domingo Este | 6.9967543 | 6.979329043 | 7.0141795 |
| Moca | 6.6630892 | 6.552414200 | 6.7737643 |
| Mao | 6.5777972 | 6.334542791 | 6.8210516 |
| Maimon | 6.4023271 | 5.356613639 | 7.4480405 |
| Estebania | 6.1978345 | 2.148582610 | 10.2470863 |
| Boca Chica | 6.1964392 | 6.073762201 | 6.3191162 |
| Pueblo Viejo | 5.9857849 | 4.030428520 | 7.9411413 |
| Guaymate | 5.7685724 | 4.355272143 | 7.1818726 |
| Samana | 5.6791387 | 5.361106943 | 5.9971705 |
| Janico | 5.6002079 | 4.602352682 | 6.5980631 |
| Esperanza | 5.5881001 | 5.275166493 | 5.9010337 |
| Dajabon | 5.5087043 | 4.833888002 | 6.1835205 |
| Las Yayas de Viajama | 5.4675100 | 4.127970032 | 6.8070499 |
| Sanchez | 5.2444350 | 4.453735608 | 6.0351345 |
| Higüey | 5.2339712 | 5.165580662 | 5.3023618 |

| | | | |
|-------------------------|-----------|-------------|-----------|
| Santo Domingo Oeste | 4.9618576 | 4.916623941 | 5.0070913 |
| Cambita Garabitos | 4.8807317 | 4.242982784 | 5.5184807 |
| San Ignacio De Sabaneta | 4.7929775 | 4.166695081 | 5.4192599 |
| Las Salinas | 4.7902755 | 0.095805510 | 9.4847455 |
| Sabana Yegua | 4.7736030 | 3.604070248 | 5.9431357 |
| Luperon | 4.5556290 | 3.280052865 | 5.8312051 |
| El Pino | 4.4579821 | 1.545433789 | 7.3705304 |
| Ramon Santana | 4.3993225 | 2.243654453 | 6.5549905 |
| La Descubierta | 4.1547668 | 1.440319165 | 6.8692145 |
| Bajos De Haina | 4.0324240 | 3.886061953 | 4.1787861 |
| Tabara Arriba | 4.0215527 | 2.707845475 | 5.3352599 |
| Las Guaranas | 4.0192872 | 2.706320080 | 5.3322544 |
| Duverge | 3.9938524 | 2.428262244 | 5.5594425 |
| El Llano | 3.9517350 | 0.079034700 | 7.8244353 |
| Pedro Brand | 3.9407016 | 3.706647803 | 4.1747554 |
| Pedernales | 3.8533242 | 3.014155784 | 4.6924925 |
| Santo Domingo de Guzman | 3.5813698 | 3.574236191 | 3.5885034 |
| Bani | 3.3054351 | 3.185460033 | 3.4254101 |
| Villa Tapia | 3.0550819 | 2.199658977 | 3.9105048 |
| Yaguatero | 2.9979435 | 2.545945881 | 3.4499412 |
| Las Terrenas | 2.8254353 | 1.717864634 | 3.9330059 |
| Santiago | 2.8209334 | 2.794975507 | 2.8468913 |
| Cayetano Germosen | 2.8138487 | 0.056276973 | 5.5714204 |
| Neiba | 2.7419134 | 2.144785610 | 3.3390412 |
| Barahona | 2.7377511 | 2.493842378 | 2.9816598 |
| Salcedo | 2.6390676 | 2.121810327 | 3.1563248 |
| La Vega | 2.6375850 | 2.559256741 | 2.7159133 |
| Comendador | 2.6288381 | 1.598333586 | 3.6593427 |
| Peralta | 2.5874098 | 1.319578974 | 3.8552405 |
| Guayubin | 2.5377422 | 1.985078332 | 3.0904060 |
| Fantino | 2.4828577 | 1.509577508 | 3.4561380 |
| La Romana | 2.4590175 | 2.332183957 | 2.5858510 |
| Guayacanes | 2.4273391 | 1.237942933 | 3.6167352 |
| Licey Al Medio | 2.4193452 | 1.629025784 | 3.2096647 |

| | | | |
|--------------------------|-----------|--------------|-----------|
| Villa Altigracia | 2.3683721 | 2.136271672 | 2.6004726 |
| Bonao | 2.2882133 | 2.133561601 | 2.4428649 |
| Villa Gonzalez | 2.2798786 | 1.783371703 | 2.7763855 |
| San Juan | 2.2505690 | 2.074124375 | 2.4270136 |
| La Mata | 2.2182605 | 1.674786661 | 2.7617343 |
| Bisono | 2.1160769 | 1.655242388 | 2.5769114 |
| San Francisco De Macoris | 1.9711141 | 1.869446083 | 2.0727821 |
| Castanuelas | 1.9551102 | 0.677771522 | 3.2324488 |
| Villa Hermosa | 1.9428478 | 1.731293231 | 2.1544023 |
| Tamboril | 1.9257006 | 1.548263248 | 2.3031379 |
| Guayabal | 1.9073927 | -1.831097011 | 5.6458825 |
| Peralvillo | 1.8898764 | 0.963836984 | 2.8159159 |
| Santa Cruz de El Seibo | 1.8710630 | 1.565456042 | 2.1766700 |
| San Pedro De Macoris | 1.5842176 | 1.490124677 | 1.6783105 |
| Nagua | 1.5703194 | 1.313833891 | 1.8268049 |
| Altamira | 1.5438997 | 0.030877994 | 3.0569214 |
| Pedro Santana | 1.5394848 | -1.477905401 | 4.5568750 |
| Cotui | 1.5062534 | 1.237866434 | 1.7746404 |
| San Antonio De Guerra | 1.4871201 | 1.070726469 | 1.9035137 |
| Nizao | 1.4756720 | 0.752592713 | 2.1987513 |
| Castillo | 1.4643032 | 0.029286064 | 2.8993203 |
| Fundacion | 1.4457480 | -1.387918078 | 4.2794141 |
| San Rafael Del Yuma | 1.3746690 | 0.701081169 | 2.0482567 |
| Piedra Blanca | 1.3607211 | 0.471716637 | 2.2497255 |
| El Factor | 1.3308969 | 0.461377576 | 2.2004161 |
| Punal | 1.2720042 | 0.856482823 | 1.6875256 |
| Jima Abajo | 1.2345934 | 0.629642633 | 1.8395442 |
| Tenares | 1.1261471 | 0.390397665 | 1.8618966 |
| Miches | 1.1019171 | 0.022038343 | 2.1817959 |
| Monte Plata | 1.0452904 | 0.635536553 | 1.4550442 |
| Imbert | 1.0206539 | 0.020413078 | 2.0208947 |
| Los Cacaos | 1.0094193 | -0.969042510 | 2.9878811 |
| Vicente Noble | 1.0040338 | 0.020080675 | 1.9879869 |
| Cristobal | 1.0002930 | -0.960281281 | 2.9608673 |
| Padre Las Casas | 0.9838419 | 0.019676838 | 1.9480069 |

| | | | |
|-------------------------|-----------|--------------|-----------|
| Las Charcas | 0.9819012 | -0.942625159 | 2.9064276 |
| Restauracion | 0.9803555 | -0.941141299 | 2.9018523 |
| San Gregorio De Nigua | 0.9420560 | 0.326579411 | 1.5575326 |
| Enriquillo | 0.9369993 | -0.899519289 | 2.7735178 |
| Sosua | 0.9251375 | 0.562483600 | 1.2877914 |
| Cevicos | 0.9205966 | -0.883772781 | 2.7249661 |
| Las Matas De Farfan | 0.8601461 | 0.298183977 | 1.4221082 |
| Gaspar Hernandez | 0.8527920 | 0.295634556 | 1.4099494 |
| Las Matas De Santa Cruz | 0.8518128 | -0.817740285 | 2.5213659 |
| Loma De Cabrera | 0.8265447 | -0.793482887 | 2.4465722 |
| Juan De Herrera | 0.8032091 | -0.771080766 | 2.3774990 |
| Los Hidalgos | 0.7504047 | -0.720388514 | 2.2211979 |
| Constanza | 0.6942031 | 0.354043562 | 1.0343626 |
| Villa Isabela | 0.6891028 | -0.661538716 | 2.0397444 |
| Rio San Juan | 0.6527960 | -0.626684125 | 1.9322761 |
| Villa Vazquez | 0.6285566 | -0.603414334 | 1.8605275 |
| Cabrera | 0.5035959 | -0.483452092 | 1.4906440 |
| Monte Cristi | 0.4637674 | -0.445216695 | 1.3727515 |
| San Jose De Las Matas | 0.4387227 | 0.008774453 | 0.8686709 |
| Jarabacoa | 0.4355955 | 0.151006446 | 0.7201846 |
| Tamayo | 0.3854663 | -0.370047622 | 1.1409802 |
| Consuelo | 0.3807781 | -0.365546933 | 1.1271030 |
| Villa Rivas | 0.3642234 | -0.349654457 | 1.0781012 |
| Bayaguana | 0.3230117 | -0.310091264 | 0.9561147 |
| Sabana Grande De Boya | 0.3042786 | -0.292107421 | 0.9006645 |
| Arenoso | NA | NA | NA |
| Banica | NA | NA | NA |
| Bohechio | NA | NA | NA |
| Cabral | NA | NA | NA |
| El Cercado | NA | NA | NA |
| El Penon | NA | NA | NA |
| El Valle | NA | NA | NA |
| Eugenio Maria De Hostos | NA | NA | NA |

| | | | |
|------------------------------|----|----|----|
| Galvan | NA | NA | NA |
| Guananico | NA | NA | NA |
| Haiti | NA | NA | NA |
| Hondo Valle | NA | NA | NA |
| Jamao Al Norte | NA | NA | NA |
| Jaquimeyes | NA | NA | NA |
| Juan Santiago | NA | NA | NA |
| La Cienaga | NA | NA | NA |
| Los Llanos | NA | NA | NA |
| Los Rios | NA | NA | NA |
| Moncion | NA | NA | NA |
| Otro Extranjero | NA | NA | NA |
| Oviedo | NA | NA | NA |
| Paraiso | NA | NA | NA |
| Partido | NA | NA | NA |
| Pepillo Salcedo (Manzanillo) | NA | NA | NA |
| Pimentel | NA | NA | NA |
| Polo | NA | NA | NA |
| Postrer Rio | NA | NA | NA |
| Quisqueya | NA | NA | NA |
| Rancho Arriba | NA | NA | NA |
| Sabana De La Mar | NA | NA | NA |
| Vallejuelo | NA | NA | NA |
| Villa Jaragua | NA | NA | NA |
| Villa Montellano | NA | NA | NA |