

1 **Prior infection by seasonal coronaviruses does not prevent SARS-CoV-2 infection and associated**
2 **Multisystem Inflammatory Syndrome in children**

3 Isabelle Sermet-Gaudelus^{1,2,3*}, Sarah Temmam^{4*}, Christèle Huon⁴, Sylvie Behillil^{5,6}, Vincent Gajdos^{7,8},
4 Thomas Bigot^{4,9}, Thibaut Lurier^{10,11,12}, Delphine Chrétien⁴, Marija Backovic¹³, Agnès Moisan-
5 Delaunay¹⁴, Flora Donati^{5,6}, Mélanie Albert^{5,6}, Elsa Foucaud¹⁵, Bettina Mesplées¹⁶, Grégoire Benoist¹⁷,
6 Albert Faye¹⁸, Marc Duval-Arnould¹⁹, Célia Cretolle², Marina Charbit², Mélodie Aubart², Johanne
7 Auriau², Mathie Lorrot²⁰, Dulanjalee Kariyawasam², Laura Fertitta², Gilles Orliaguet², Bénédicte
8 Pigneur², Brigitte Bader-Meunier², Coralie Briand¹⁶, Vincent Enouf^{5,6,21}, Julie Toubiana^{2,3,22}, Tiffany
9 Guilleminot²³, Sylvie van der Werf^{5,6}, Marianne Leruez-Ville²³, Marc Eloit^{4,24}.

10 * These two authors contributed equally to the work

11

12 1-Institut Necker Enfants Malades, INSERM U 1171. Paris 75015, Paris France

13 2-Hôpital Necker-Enfants Malades. Assistance Publique Hôpitaux de Paris. Paris 75015. France

14 3-Université de Paris. Paris 75015, France

15 4-Pathogen Discovery Laboratory, Department of Virology, Institut Pasteur, Paris, France

16 5-Molecular Genetics of RNA Viruses, Department of Virology, CNRS UMR3569, University of Paris,
17 Institut Pasteur, Paris, France

18 6-National Reference Center for Respiratory Viruses, Institut Pasteur, Paris, France

19 7-Hôpital Antoine Beclere. 92140 Clamart, France

20 8-Centre for Research in Epidemiology and Population Health, INSERM UMR1018, Villejuif, France

21 9-Hub de Bioinformatique et Biostatistique – Département Biologie Computationnelle, Institut
22 Pasteur, USR 3756 CNRS, Paris, France

23 10-Université Clermont Auvergne, INRAE, VetAgro Sup, UMR EPIA, F-63122 Saint-Genès-Champanelle,
24 France

NOTE: This preprint reports new research that has not been certified by peer review and should not be used to guide clinical practice.

- 25 11-Université de Lyon, INRAE, VetAgro Sup, UMR EPIA, F-69280 Marcy l'Etoile, France
- 26 12-Université de Lyon, INRAE, VetAgro Sup, Usc 1233 UR RS2GP, F-69280 Marcy l'Etoile, France
- 27 13-Structural Virology Unit, Institut Pasteur, Paris 75015, France
- 28 14-Université Paris-Saclay, CEA, CNRS, Institute for Integrative Biology of the Cell (I2BC), 91198, Gif-
29 sur-Yvette, France
- 30 15-Hôpital Jean Verdier. 93140 Bondy, France
- 31 16-Hôpital Louis Mourier. 92700 Colombes. France
- 32 17-Hôpital Ambroise Paré. Boulogne Billancourt 92100. France
- 33 18-Hôpital Robert Debré. Paris 75019. France
- 34 19-Hôpital Kremlin Bicêtre. 94270 Le Kremlin-Bicêtre. France
- 35 20-Hôpital Armand Trousseau. 75012 Paris. France
- 36 21-Plateforme de microbiologie mutualisée (P2M), Pasteur International Bioresources Network
37 (PIBnet), Institut Pasteur, Paris, France
- 38 22-Unité Biodiversité et Epidémiologie des Bactéries Pathogènes, Institut Pasteur, Paris, France
- 39 23-Laboratoire de Microbiologie, Hôpital Necker-Enfants Malades ; Paris 75015, France
- 40 24-Ecole Nationale Vétérinaire d'Alfort, 94704 Maisons Alfort, France
- 41
- 42 Corresponding author: Marc Eloit marc.eloit@pasteur.fr, Institut Pasteur, 28 rue du Dr Roux, 75015
43 Paris-F
- 44
- 45

46 **Abstract**

47 **Background:** Children have a lower rate of COVID-19, potentially related to cross-protective immunity
48 conferred by seasonal coronaviruses (HCoVs). We tested if prior infections with seasonal
49 coronaviruses impacted SARS-CoV-2 infections and related Multisystem Inflammatory Syndrome
50 (MIS).

51 **Methods:** This cross-sectional observational study in Paris hospitals enrolled 739 pauci or
52 asymptomatic children (HOS group) plus 36 children with suspected MIS (MIS group). Prevalence,
53 antigen specificity and neutralizing capability of SARS-CoV-2 antibodies were tested. Antibody
54 frequency and titres against Nucleocapsid (N) and Spike (S) of the four seasonal coronaviruses (NL63,
55 HKU1, 229E, OC43) were measured in a subset of seropositive patients (54 SARS-CoV-2 (HOS-P
56 subgroup) and 15 MIS (MIS-P subgroup)), and in 118 matched SARS-CoV-2 seronegative patients (CTL
57 subgroup).

58 **Findings:** SARS-CoV-2 mean prevalence rate in HOSP children was 11.7% from April 1 to June 1.
59 Neutralizing antibodies were found in 55-6% of seropositive children, and their relative frequency
60 increased with time (up to 100 % by mid-May). A majority of MIS children (25/36) were SARS-CoV-2
61 seropositive, of which all tested (n=15) had neutralizing antibodies. On average, seropositive MIS
62 children had higher N and S1 SARS-CoV-2 titres as compared to HOS children. Patients from HOS-P,
63 MIS-P, and CTL subgroups had a similar prevalence of antibodies against the four seasonal HCoVs (66-9
64 -100%). The level of anti-SARS-CoV-2 antibodies was not significantly different in children who had
65 prior seasonal coronavirus infection.

66 **Interpretation:** Prior infection with HCoVs does not prevent SARS-CoV-2 infection and related MIS in
67 children. Children develop neutralizing antibodies after SARS-CoV-2 infection.

68

69 **Evidence before this study**

70 Children seem to be less likely affected by SARS-CoV-2 infection and clinical course of COVID-19 is less
71 severe than in adults. As those asymptomatic or mildly symptomatic children are underdiagnosed and
72 their viral loads are comparable to those of adults, they may act as an asymptomatic reservoir for the
73 spread of the virus. One explanation of the difference between the adult and the pediatric infectious
74 profile might be that infection with seasonal human coronaviruses, which is very frequent from a very
75 young age, could lead to cross protective immunity. We searched in PubMed, MedRxiv and BioRxiv
76 for publications from inception to June 15, 2020, using the terms “COVID-19, SARS-CoV-2, children,
77 serology, Kawasaki, Corona Virus”.

78 **Added value of this study**

79 SARS-CoV-2 mean prevalence rate was 11.7% from April 1 to June 1 and neutralizing antibodies were
80 found in 55% of the tested seropositive children. Among patients with a Multisystem Inflammatory
81 Syndrome, Kawasaki-like disease, 70% were SARS-CoV-2 seropositive and had neutralizing antibodies.
82 COVID-19 and MIS attack rates, and anti-SARS-CoV-2 antibodies titres were not significantly impacted
83 by prior seasonal coronavirus infection.

84 **Implications of all the available evidence**

85 Prior infection by seasonal coronaviruses does not prevent SARS-CoV-2 infection and associated
86 Multisystem Inflammatory Syndrome in children As antibodies against seasonal coronaviruses are
87 very frequent and as these viruses circulate efficiently in human populations every winter, our results
88 question to what extent the concept of herd immunity based on circulating antibodies can be applied
89 to seasonal coronaviruses and possibly SARS-CoV-2.

90

91

92

93 Introduction

94 COVID-19 is due to SARS-CoV-2, a betacoronavirus subgenus Sarbecovirus¹, which has expanded
95 worldwide since its emergence in China at the end of 2019. Observations indicate that children are
96 less likely to develop the disease and that the clinical course of COVID-19 in children is less severe than
97 in adults²⁻⁴. Accordingly, children represent only 0.6-2.3% of confirmed cases in China and 0.8-5.2%
98 outside China outside context of household^{2,5,6}. As asymptomatic or mildly symptomatic children are
99 underdiagnosed, and their viral loads are comparable to those of adults, children may act as an
100 asymptomatic reservoir for the spread of the virus to their adult and elderly relatives^{7,8}, albeit with
101 low efficacy⁹. Children's susceptibility to infection might also be low⁵ and the paediatric cohort may
102 represent a pool of "immune naïve" population. Differences in susceptibility profiles for children and
103 adults might be driven by infections with seasonal human coronaviruses (HCoVs), which are very
104 frequent at a very young age¹⁰, and could lead to cross-protective immunity in children. This may be
105 mediated either by cross-binding or cross-neutralizing antibodies¹¹, or by T cell responses that target
106 epitopes shared by SARS-CoV-2 and HCoVs^{12,13}. Indeed, it was recently shown that CD4+ T cells of
107 unexposed subjects (sampled before the pandemic) recognized SARS-CoV-2.

108 Despite a low frequency of respiratory symptoms, cases of Multisystem Inflammatory
109 Syndrome (MIS) have been reported in children that were infected by SARS-CoV-2 or were in contact
110 with COVID-19 patients^{14,15}. MIS shares similarities with classic Kawasaki disease but displays different
111 prominent clinical signs including cardiogenic shock or myocarditis¹⁵. As for other post infectious
112 diseases¹⁶, it is possible that a low antibody response to SARS-CoV-2, or cross-reactive antibodies
113 without any neutralizing capability, facilitate immune-dependent enhancement following re-
114 exposure, potentiated by a specific genetic background^{17,18}. Interestingly, a domain of the SARS-CoV-
115 2 spike protein which binds with high affinity to T cells may act as a super antigen, and trigger
116 excessive adaptive immune responses¹⁹.

117 The aim of this study was to analyse the impact of endemic seasonal coronaviruses on SARS-
118 CoV-2 infection in children. This was performed in a large cohort of children aged 0 – 18 years,

119 hospitalized in Paris. To measure if prior infections with HCoVs (detected by antibody responses
120 against two major antigens, S and N) conferred protection towards SARS-CoV-2 infection, we analysed
121 their frequency in SARS-CoV-2 positive children as compared to SARS-CoV-2 negative matched
122 controls. We also analysed SARS-CoV-2 and seasonal HCoVs humoral responses of patients with MIS
123 regarding antibody targets and functional neutralizing activity. Our study is the first to analyse in depth
124 the typology of humoral responses to SARS-CoV-2 in children, and provides evidence that prior
125 infections by seasonal coronaviruses has no significant impact on SARS-CoV-2 infection or related MIS
126 disease in children.

127

128

129 **Methods**

130 **Study setting and data collection**

131 Paediatric patients aged 0 – 18 years consulting or hospitalized for at most 4 days in a paediatric
132 tertiary health care department of the Assistance Publique-Hôpitaux de Paris between April 1, 2020,
133 and June 1, 2020 were included in this prospective multicentric observational seroprevalence study.
134 Children hospitalized for COVID-19 were excluded. Sera were also collected from March 1 to March
135 31 from patients consulting for regular follow-up or hospitalized in emergency in one of the hospitals
136 (Necker Enfants Malades Hospital). The definition of a suspected case for COVID-19 was based on
137 recommendations from the European Center for Disease Prevention and Control (ECDC)²⁰. We also
138 included in this study during the same period patients presenting with a MIS disease, as defined by
139 the American Heart Association²¹.

140 We recorded the history of suspected COVID-19 cases based on a standardized study-specific form.
141 We collected data on clinical symptoms consistent with COVID-19 occurring from December 2019 until
142 up to 7 days before enrolment. Demographic information, relevant epidemiological history (e.g.
143 international travel or contact with an infected person or a suspected case), comorbidities, reasons
144 for hospitalization were collected.

145 **Ethics**

146 The local Ethics (CERAPHP Paris V) approved this study (IRB registration: #00011928). Patients and/or
147 their parents/guardians were informed about the study

148 **Serological tests**

149 For SARS-CoV-2 prevalence, we used a LIPS (Luciferase Immunoprecipitation System) test as
150 previously reported²², which identifies antibodies (Ab) targeted to the S1 and S2 domains of the Spike
151 (S) and to the Nucleoprotein (N). For the neutralization assay we used a viral pseudotype-based assay
152 and a neutralization test using live SARS-CoV-2. In a fraction of samples, we assessed by LIPS tests,
153 antibodies to the nucleoprotein and to the full spike ectodomain in a pre-fusion conformation for
154 SARS-CoV-2, and the four human coronaviruses (HKU1, NL63, OC43, and 229E). Detailed technical

155 information together with sensitivity and specificity evaluations are given respectively in
156 **Supplementary Material S1 and S2.**

157 **Statistical analysis**

158 We did not detect any difference in terms of age, sex ratio, and main comorbidities between patients
159 recruited in March (n=133; single centre study) and afterwards (n=642; multicentric seroprevalence
160 study) (**Supplemental Table 1**). We therefore present the demographic and clinical data of the whole
161 cohort of children enrolled. Cases were grouped based on the results of serology testing and clinical
162 presentation. Data were assessed for normal distribution using the Kolmogorov-Smirnov test.
163 Continuous variables were presented as mean (SD) and compared using the Student t test. Categorical
164 variables were compared using Chi² or Fisher's exact tests, as appropriate. Statistical analyses were
165 conducted with Excel or GraphPad Prism 8 (GraphPad Software, LLC). Principal Component Analysis
166 was performed to identify the serological profile according to SARS-CoV-2 Abs and seasonal HCoV Abs.
167 Data were processed with R 3.6.3 using GGPlot2 with GGally for matrices of plots, and ggfortify for
168 PCA plots packages. Two-sided p value of <0.05 was considered significant.

169

170 Results

171 1-Prevalence and clinical presentation of SARS-CoV-2 infection

172 In total, 775 children, mean (SD) age 8 (5.6) years were enrolled in the study (**Figure 1**). One hundred
173 six (13.6%) were below 15 years of age. The reason for consultation or hospitalization was regular
174 follow-up for 58%, surgery for 11.7% and medical emergency for 15% (HOS population). Among those,
175 17 patients (2.1%) were hospitalized for neurological disorders including encephalitis (n=4),
176 cerebellitis (n=5), polyradiculoneuritis (n=7), and labyrinthitis (n=1). Thirty-six other patients (4.6%)
177 presented with a MIS and among those, 25 were hospitalized in Intensive Care Unit because of signs
178 of shock, and 28 developed myocarditis.

179 The apparent prevalence of seropositive children was in the range 10% - 15% between 6th April and
180 1st June, except on the week starting 11th May where it reached 27%. The patients with MIS were
181 mainly detected from the last week of April to mid-May (**Figure 2**). The seropositive patients with
182 neurological disorders were hospitalized over the whole study period.

183 **Table 1** presents the demographic and clinical characteristics of 594 SARS-CoV-2 seronegative patients
184 and 172 seropositive patients enrolled between 1st March to 1st June. The seropositive children
185 consisted of patients hospitalized for MIS (MIS-P; n=25) or for any other reason (HOS-P; n=147).

186 The comparison between seronegative and seropositive patients among the whole cohort of HOS and
187 MIS populations did not show any significant differences for age, sex ratio, reasons for hospitalization
188 and main comorbidities, apart for SARS-CoV-2 seropositive MIS patients, who did not report
189 underlying chronic diseases and were all hospitalized in emergency units. There was a significantly
190 higher frequency of household contact with suspected SARS-CoV-2 infection (without testing) among
191 the seropositive patients. History of contact with a suspected COVID-19 household significantly
192 increased the risk for positive serology, even in case of asymptomatic infection (OR 2.25, 95% CI [1.3;
193 3.9]). Among the 25 contacts of seropositive patients, 23 were parents.

194 The seropositive children (HOS-P and MIS-P) did not show an age-dependent specific distribution
195 (**Supplemental Figure S3**). More than 70% of them (121 out of the 172) did not report any history
196 consistent with COVID-19 during the preceding weeks. The only symptoms that were marginally but
197 significantly reported in the previous months in seropositive children were headache, shortness of
198 breath and rhino-pharyngitis. Neurological disorders were significantly more frequent in the
199 seropositive group (13 children out of 17).

200 **2-Profiling SARS-CoV-2 antibody responses in HOS-P and MIS-P patients**

201 HOS-P patients Ab profile was characterized by a dominant S2 response compared to responses to S1,
202 N and to the full S ectodomain (**Figure 3**). The HOS-P children with neurological symptoms showed N,
203 S1 and S2 responses similar to those of the HOS-P group without neurological symptoms
204 (**Supplemental Figure S4**) and were analysed together.

205 MIS-P patients showed a distinct Ab profile directed against N, S1 and S2 altogether (**Figure 4**). Levels
206 of N and S1 Abs to SARS-CoV-2 were significantly higher in the MIS-P than in the HOS-P group (**Figure**
207 **3C-D**).

208 **3-Neutralization activity of the Ab**

209 To investigate the neutralization activity, we first performed a pseudo-neutralization assay in the
210 subset of 54 HOS-P and 15 MIS-P patients (**Figure 1**). Overall, 55.6% of HOS-P and 100% of MIS-P
211 children showed a neutralizing activity. Interestingly, the fraction of HOS-P children whose Abs
212 displayed a pseudo-neutralizing activity (PNT+) increased with time (**Figure 2B**), from 18% to 38%
213 during March and April to 100% at the beginning of May. For a fraction of these children, we
214 investigated the correspondence between PNT and live SARS-CoV-2 neutralizing activity determined
215 in a plaque reduction test (PRNT) (**Table S6**). All tested sera positive in PNT (n=28) were PRNT+ and 2
216 out of the 11 PNT-negative sera were also PRNT+. In total, 73.7% of HOS-P tested sera showed a
217 neutralizing activity. Neutralizing titres of PNT+ and PRNT+ sera of MIS-P patients were similar to those
218 of HOS-P patients (**Figure 3**).

219 **4-Relationship between SARS-CoV-2 and seasonal HCoV infections**

220 We compared the prevalence of anti-N and -S antibodies against the four seasonal HCoVs in a
221 subpopulation of children among the HOS-P (n=54), MIS-P (n=15) and CTL (n=118) groups (**Figure 1**).
222 Prevalence rates for the two betacoronaviruses (HKU1 and OC43) and the two alphacoronaviruses
223 (229E and NL63) were similar for all viruses between the CTL and HOS-P groups. They were also similar
224 for HKU-1, 229E and NL63 in the MIS-P group, whereas Abs to OC43 N were more frequent in the MIS-
225 P group (73%) than in the CTL group (39.4%), which was not paralleled by the anti-S response that was
226 near 100% in the two groups (**Table 2**).

227 We reasoned that prior infection with SARS-CoV-2, identified by antibody responses, could induce
228 cross-reactive immune effectors, like CD4+ and CD8+ T cells and neutralizing antibodies. This would
229 diminish or impair SARS-CoV-2 antibody responses, which should therefore be lower in patients with
230 high anti-HCoV Ab levels. Alternatively, previous HCoV infections could prime the immune system
231 resulting, upon SARS-CoV-2 infection, in a boost of the antibody response against shared epitopes or
232 in facilitation of infection. Such boost should lead to higher anti-SARS-CoV-2 Ab levels in HCoV positive
233 patients. There was no significant difference between HOS-P and CTL patients regarding antibody
234 levels to the four seasonal HCoVs (**Figure 3**). This demonstrates that humoral responses between
235 seasonal coronaviruses and SARS-CoV-2 were not related. This is confirmed by the PCA analysis which
236 showed that the patient groups (HOS-P, MIS-P and CTL) were only clustered by SARS-COV-2 Abs and
237 not by seasonal HCoV Abs. (**Figure 4**). This suggests that the risk of SARS-CoV-2 infection and of related
238 MIS disease were not influenced by prior seasonal HCoV infection. In support to this observation, there
239 was an association, for each virus, between all S and N antibody titres within each of the three groups
240 of patients (CTL, HOS-P and MIS-P). This correlation was stronger for SARS-CoV-2 than for seasonal
241 HCoVs. (**Supplemental Figures S5 and S6**) Importantly, there was no significant association between
242 SARS-CoV-2 and seasonal HCoV quantitative Ab responses (**Supplemental Figures S5 and S6**). MIS-P
243 and HOS-P groups did not differ for Abs titers against seasonal HCoVs, except for OC43-N Abs that
244 were increased in MIS-P children, but this tendency was not confirmed by the OC43-S Ab response
245 (**Figure 3A- B**). This was coherent with the Abs prevalence study (**Table 2**). .

246

247 **Discussion**

248 This cross-sectional prospective multicentric study provides to the best of our knowledge the largest
249 report on COVID-19 in the paediatric population outside of China. We enrolled nearly 800 children
250 during the first three months of the COVID-19 epidemic in Paris. From April to May, the prevalence
251 rate of Abs against SARS-CoV-2 was in the range of 10-15%. We noticed an outlier peak of incidence
252 during the week of 11 May, which was likely associated with an increase of vigilance of physicians
253 following the information of severe clinical presentations in children. This prevalence rate is in
254 contrast with previous epidemiological cohort studies, based on RT-PCR, where children represent
255 less than 2% of diagnosed cases²⁴⁻²³. These numbers are compatible with the prevalence estimated in
256 Paris²⁴ despite the specificity of the population of children recruited in university hospitals. Here, in a
257 large cohort of children less than 15 years old, we demonstrate that (i) a substantial proportion of
258 children can become infected and (ii) the risk is not related to age. In nearly 15% of the cases, a contact
259 with a parent suspected of COVID-19 was identified, which increased by 2.5 fold the risk to be infected.
260 Very importantly, more than 50% of the seropositive children did not report any symptoms, a
261 proportion similar to that recently reported in adults²⁵. The reminders reported mild and non-specific
262 symptoms such as headache, rhino-pharyngitis and shortness of breath. This confirms previously
263 published data showing that COVID-19 is less severe in children than in adults²⁶. The largest study in
264 children published so far that described SARS-CoV-2 infection in 2,143 Chinese children also reported
265 asymptomatic infection or mild symptoms such as fever, cough, a sore throat, sneezing, myalgia and
266 fatigue²⁷. Altogether, these results and ours underline that most children remain undiagnosed
267 because of asymptomatic infections, which makes them potential drivers of virus spread²⁸.
268 This is to our knowledge the first study profiling the humoral immune response in children
269 experiencing pauci-symptomatic infection by SARS-CoV-2. We showed that around half of SARS-CoV-
270 2 positive sera present a significant neutralizing activity based on two independent assays (based on
271 lentivirus pseudo-typed with the SARS-CoV-2 spike or based on live virus). Interestingly, this rate

272 increased up to 100% at the end of the observation period on mid-May, almost 2 months after the
273 peak of the epidemic. As reported by others²⁹, this suggests that appearance of neutralizing antibodies
274 is delayed relative to initial seroconversion. This is in contrast to severe COVID-19 forms^{22,30}, where
275 neutralizing antibody responses against the immunodominant S viral protein are elicited as soon as
276 after two weeks of infection at higher frequency and titres. Importantly, considering these data, it
277 must be underlined that quantitative correlates of protection are currently unknown, which makes it
278 difficult to relate the neutralizing titres to a clinically relevant effect.

279 To investigate reasons explaining decreased severity of SARS-CoV-2 infection in children, we studied
280 the impact of prior infections with seasonal HCoVs on the risk of infection by SARS-CoV-2. Antibodies
281 were considered as an evidence of past infection by HCoVs, the intensity of the antibody response
282 reflecting partly the degree of replication within the host. However, this represents a limitation as
283 cases of infection have been reported to be seronegative as revealed by isolated T-cell responses³¹.
284 Seasonal HCoVs include alphacoronaviruses (229E and NL63) and betacoronaviruses lineage A (OC43
285 and HKU1), which primarily replicate in the respiratory tract and mostly cause common colds³². These
286 viruses show a worldwide distribution and multiple HCoV infections in various combinations are
287 common^{10,32-34,35}. Infection takes place in very early childhood and seroprevalence studies show very
288 high prevalence rates³⁶, up to 100% in adult populations^{10,37,38}. It is therefore very likely that infection
289 by HCoVs preceded infection by SARS-CoV-2 in our cohort. Previous seasonal HCoV infections could
290 have an impact on SARS-CoV-2 replication. Indeed, antibodies are unlikely to act as primary effectors
291 of protection, as there is no or very low¹¹ cross neutralization between these coronaviruses, but
292 antibodies serve as an indicator of underlying cellular responses. We found no evidence of cross-
293 protective immunity linked to previous infection by seasonal HCoVs. First, similar seasonal HCoV
294 prevalence was found in SARS-CoV-2 positive versus negative patients. Second, on a quantitative side,
295 there was no significant correlation between SARS-CoV-2 and any HCoV antibody titres, whatever the
296 antigen considered (S or N). On the contrary, the level of SARS-CoV-2 antibodies to N and S were
297 correlated, which corresponds to a good internal control. This was also the case for the N and S
298 responses for each HCoV, but to a lesser extent. We hypothesized that multiple infections by seasonal

299 HCoV-229E would boost Ab responses against shared epitopes that are more frequent in the nucleoprotein
300 than in the spike, and that this would lead to a decrease of correlation between N and S responses
301 over time. When analysing the S and N responses to HCoV-229E, we found no obvious difference in N to S
302 correlations in CTL patients as compared to the HOS-P group, suggesting that infection with SARS-CoV-
303 2 did not significantly boost pre-existing antibody responses to HCoV-229E N and S.

304 This lack of HCoV/SARS-CoV-2 cross-protection contrasts with the recent demonstration of pre-
305 existing immune effectors recognizing SARS-CoV-2 in subjects sampled before the SARS-CoV-2
306 pandemic. Moreover, a very sensitive cytometric assay reported frequent low levels of cross-reacting
307 anti-S IgGs, mainly targeting the SARS-CoV-2 S2 domain of the spike¹¹. Although those Abs neutralized
308 entry of SARS-CoV-2 S-pseudo-typed lentiviruses in HEK-293T cells mediated by the spike protein, the
309 clinical relevance of the SARS-CoV-2 pseudo-neutralisation test is questionable, because the
310 mechanism of entry did not involve the ACE2 receptor of the virus. Moreover, T-helper cells detected
311 in healthy subjects also recognized the C-terminal part of S (that contains the S2 subunit) but not the
312 receptor-binding domain (RBD) which belongs to S1¹³. In contrast, our results clearly show that cross-
313 reactive antibodies directed against endemic seasonal HCoV-229E and underlying cross-reacting CD4+ T-
314 cells do not seem to confer any significant protection against SARS-CoV-2 infection. This could be
315 explained by low identity between coronaviruses of important targets such as the RBD. Importantly,
316 this also suggests that potentially cross-reactive CD8+ T cells, which should be elicited upon seasonal
317 HCoV-229E infections as is the case following SARS-CoV-2 infection³⁹, are not able to significantly contribute
318 to protection against SARS-CoV-2 infection.

319 We analysed the SARS-CoV-2 Ab profile in 25 MIS cases associated with a positive SARS-CoV-2 Ab
320 response. We found higher S1 and N responses, but not an increased neutralizing capacity as
321 compared to HOS-P patients who experienced an asymptomatic or pauci-symptomatic infection
322 (**Figure 2A**). This was not the case for the beta- (OC43) or alpha- (229E and NL63) coronaviruses Ab
323 responses, suggesting that the increased SARS-CoV-2 response is not a non-specific feature triggered
324 by inflammation. Furthermore, the lack of cross-reactivity between anti-S1 Abs of the different

325 viruses⁴⁰ does not favour the hypothesis of SARS-CoV-2 infection boosting pre-existing HCoV immunity
326 in MIS patients. As a whole, our data do not support that previous HCoV infection facilitates SARS-
327 CoV-2 infection and MIS-related disease.

328 Neutralizing tests for the four seasonal HCoVs were not available but some extrapolation can be done
329 based on SARS-CoV-2 neutralization and LIPS results, because equivalent LIPS tests were used for all
330 viruses. As the SARS-CoV-2 results show that up to 100% of LIPS positive sera sampled one to two
331 months post-infection had neutralizing activity, it can be anticipated that most HCoV positive sera
332 would also neutralize corresponding HCoVs. This means that, in a perspective of herd immunity, most
333 of the general population would have antibodies neutralizing seasonal HCoVs, among other immune
334 effectors. As common colds due to seasonal HCoVs are experienced repeatedly, this leads to
335 questioning whether coronavirus immune responses induce a long-term clinically protective response.
336 Our results therefore pose a doubt regarding the humoral protective response against SARS-CoV-2 in
337 a perspective of herd immunity, even when the prevalence of antibodies will be high in the population.

338 The strengths of the study are the high number of well documented paediatric cases including MIS
339 cases and the extensive exploration of Ab responses to SARS-CoV-2, their neutralizing activity, and the
340 correlation with seasonal HCoV immune responses. We acknowledge that infection rates are probably
341 biased in this cohort of hospitalized children, despite the fact that we focused as much as possible on
342 regular follow-up or COVID-19 unrelated emergencies. In this cohort, we observed no correlation
343 between the Ab responses against SARS-CoV-2 and seasonal HCoVs. Although cellular and local
344 immune defenses were not directly tested, our results do not provide evidence for cross-protective
345 immunity or facilitation linked to previous infections by seasonal HCoVs on the risk of developing a
346 SARS-CoV-2 infection or a MIS disease once infected.

347 In conclusion, our results show that 11.7 % of children admitted in Parisian hospitals have Abs against
348 SARS-CoV-2 and that these Abs are able to neutralize SARS-CoV-2 *in vitro*. As seasonal HCoVs circulate
349 efficiently in the human population despite very high antibody prevalence, our results point to the
350 limits of herd immunity applied to seasonal coronaviruses and maybe SARS-CoV-2.

351

352

353

354 **Funding:** ME lab is funded by Institut Pasteur, Labex IBEID (ANR-10-LABX-62-IBEID), Reacting, EU grant
355 Recover, ANR Oh'ticks. SVDW lab is funded by Institut Pasteur, CNRS, Université de Paris, Santé
356 publique France, Labex IBEID (ANR-10-LABX-62-IBEID), REACTing (Research & Action Emerging
357 Infectious Diseases), EU Grant 101003589 RECoVER.

358 **Author contribution:**

359 Conceptualization and Methodology:

360 Cohort management and sample collection:

361 Serological and seroneutralisation assays:

362 Data assembly and manuscript writing:

363 Funding acquisition:

364 Supervision:

365

366 All authors reviewed and approved the final version of the manuscript.

367 **Competing interests:** Authors declare no competing interests.

368 **Acknowledgments:** We thank Thierry Rose and Yves Janin for providing us the luciferase reagents,
369 Evelyne Dufour and Stephane Petres for their help in the production of recombinant proteins, Pierre
370 Charneau and François Anna for testing the sera with the pseudoneutralization test and the ICAREB
371 platform for giving us access to a collection of sera collected before the epidemic. We thank Olivier
372 Schwartz for providing us with the raw data of the S-Flow technique for the sera analyzed in Grzelak
373 et al., 2020. We thank Quentin Leclech for help with data analysis, and Zakary M'Sakny, Mathis Crespin
374 , Felix Wolfram, Victor Zetlaoui (enthusiastic MD Students), Deborah Rechar, Dr Michaela Semeraro

375 and Dr Emeline Roy who helped for data collection. We thank Simon Cauchemez for critical lecture of
376 the manuscript.
377

378

379 **References**

- 380 1 Coronaviridae Study Group of the International Committee on Taxonomy of Viruses. The species
381 Severe acute respiratory syndrome-related coronavirus: classifying 2019-nCoV and naming it
382 SARS-CoV-2. *Nat Microbiol* 2020; **5**: 536–44.
- 383 2 CDC COVID-19 Response Team. Coronavirus Disease 2019 in Children - United States, February
384 12-April 2, 2020. *MMWR Morb Mortal Wkly Rep* 2020; **69**: 422–6.
- 385 3 Lu X, Zhang L, Du H, *et al.* SARS-CoV-2 Infection in Children. *New England Journal of Medicine*
386 2020; **382**: 1663–5.
- 387 4 Dong Y, Mo X, Hu Y, *et al.* Epidemiology of COVID-19 Among Children in China. *Pediatrics* 2020;
388 **145**. DOI:10.1542/peds.2020-0702.
- 389 5 Wu Z, McGoogan JM. Characteristics of and Important Lessons From the Coronavirus Disease
390 2019 (COVID-19) Outbreak in China: Summary of a Report of 72 314 Cases From the Chinese
391 Center for Disease Control and Prevention. *JAMA* 2020; published online Feb 24.
392 DOI:10.1001/jama.2020.2648.
- 393 6 Choi S-H, Kim HW, Kang J-M, Kim DH, Cho EY. Epidemiology and clinical features of coronavirus
394 disease 2019 in children. *Clin Exp Pediatr* 2020; **63**: 125–32.
- 395 7 Jones TC, Mühlemann B, Veith T, *et al.* An analysis of SARS-CoV-2 viral load by patient age.
396 *medRxiv* 2020; : 2020.06.08.20125484.
- 397 8 Guan W, Ni Z, Hu Y, *et al.* Clinical Characteristics of Coronavirus Disease 2019 in China. *New*
398 *England Journal of Medicine* 2020; **382**: 1708–20.
- 399 9 Danis K, Epaulard O, Bénet T, *et al.* Cluster of Coronavirus Disease 2019 (COVID-19) in the French
400 Alps, February 2020. *Clin Infect Dis* DOI:10.1093/cid/ciaa424.
- 401 10 Zhou W, Wang W, Wang H, Lu R, Tan W. First infection by all four non-severe acute respiratory
402 syndrome human coronaviruses takes place during childhood. *BMC Infect Dis* 2013; **13**: 433.
- 403 11 Ng K, Faulkner N, Cornish G, *et al.* Pre-existing and *de novo* humoral immunity to
404 SARS-CoV-2 in humans. *bioRxiv* 2020; : 2020.05.14.095414.
- 405 12 Grifoni A, Weiskopf D, Ramirez SI, *et al.* Targets of T cell responses to SARS-CoV-2 coronavirus in
406 humans with COVID-19 disease and unexposed individuals. *Cell* 2020; published online May 20.
407 DOI:10.1016/j.cell.2020.05.015.
- 408 13 Braun J, Loyal L, Frentsch M, *et al.* Presence of SARS-CoV-2 reactive T cells in COVID-19 patients
409 and healthy donors. *medRxiv* 2020; : 2020.04.17.20061440.
- 410 14 Verdoni L, Mazza A, Gervasoni A, *et al.* An outbreak of severe Kawasaki-like disease at the Italian
411 epicentre of the SARS-CoV-2 epidemic: an observational cohort study. *Lancet* 2020; published
412 online May 13. DOI:10.1016/S0140-6736(20)31103-X.
- 413 15 Belhadj Z, Méot M, Bajolle F, *et al.* Acute heart failure in multisystem inflammatory syndrome in
414 children (MIS-C) in the context of global SARS-CoV-2 pandemic. *Circulation* 2020; published online
415 May 17. DOI:10.1161/CIRCULATIONAHA.120.048360.

- 416 16 Takada A, Kawaoka Y. Antibody-dependent enhancement of viral infection: molecular
417 mechanisms and in vivo implications. *Rev Med Virol* 2003; **13**: 387–98.
- 418 17 Riphagen S, Gomez X, Gonzalez-Martinez C, Wilkinson N, Theocharis P. Hyperinflammatory shock
419 in children during COVID-19 pandemic. *Lancet* 2020; published online May 7. DOI:10.1016/S0140-
420 6736(20)31094-1.
- 421 18 Toubiana J, Poirault C, Corsia A, *et al.* Kawasaki-like multisystem inflammatory syndrome in
422 children during the covid-19 pandemic in Paris, France: prospective observational study. *BMJ*
423 2020; **369**. DOI:10.1136/bmj.m2094.
- 424 19 Cheng MH, Zhang S, Porritt RA, Arditi M, Bahar I. An insertion unique to SARS-CoV-2 exhibits
425 superantigenic character strengthened by recent mutations. *bioRxiv* 2020; : 2020.05.21.109272.
- 426 20 Case definition for coronavirus disease 2019 (COVID-19), as of 29 May 2020. European Centre for
427 Disease Prevention and Control. [https://www.ecdc.europa.eu/en/covid-19/surveillance/case-](https://www.ecdc.europa.eu/en/covid-19/surveillance/case-definition)
428 definition (accessed June 16, 2020).
- 429 21 McCrindle BW, Rowley AH, Newburger JW, *et al.* Diagnosis, Treatment, and Long-Term
430 Management of Kawasaki Disease: A Scientific Statement for Health Professionals From the
431 American Heart Association. *Circulation* 2017; **135**: e927–99.
- 432 22 Grzelak L, Temmam S, Planchais C, *et al.* SARS-CoV-2 serological analysis of COVID-19 hospitalized
433 patients, pauci-symptomatic individuals and blood donors. *medRxiv* 2020; : 2020.04.21.20068858.
- 434 23 Gudbjartsson DF, Helgason A, Jonsson H, *et al.* Spread of SARS-CoV-2 in the Icelandic Population.
435 *New England Journal of Medicine* 2020; **382**: 2302–15.
- 436 24 Salje H, Kiem CT, Lefrancq N, *et al.* Estimating the burden of SARS-CoV-2 in France. *Science* 2020;
437 published online May 13. DOI:10.1126/science.abc3517.
- 438 25 Oran DP, Topol EJ. Prevalence of Asymptomatic SARS-CoV-2 Infection. *Annals of Internal Medicine*
439 2020; published online June 3. DOI:10.7326/M20-3012.
- 440 26 Ludvigsson JF. Systematic review of COVID-19 in children shows milder cases and a better
441 prognosis than adults. *Acta Paediatrica* 2020; **109**: 1088–95.
- 442 27 Dong E, Du H, Gardner L. An interactive web-based dashboard to track COVID-19 in real time.
443 *Lancet Infect Dis* 2020; **20**: 533–4.
- 444 28 Kam K-Q, Yung CF, Cui L, *et al.* A Well Infant with Coronavirus Disease 2019 (COVID-19) with High
445 Viral Load. *Clin Infect Dis* 2020; published online Feb 28. DOI:10.1093/cid/ciaa201.
- 446 29 Fafi-Kremer S, Bruel T, Madec Y, *et al.* Serologic responses to SARS-CoV-2 infection among
447 hospital staff with mild disease in eastern France. *medRxiv* 2020; : 2020.05.19.20101832.
- 448 30 Prévost J, Gasser R, Beaudoin-Bussièrès G, *et al.* Cross-sectional evaluation of humoral responses
449 against SARS-CoV-2 Spike. *bioRxiv* 2020; : 2020.06.08.140244.
- 450 31 Gallais F, Velay A, Wendling M-J, *et al.* Intrafamilial Exposure to SARS-CoV-2 Induces Cellular
451 Immune Response without Seroconversion. *medRxiv* 2020; : 2020.06.21.20132449.
- 452 32 Dijkman R, Jebbink MF, El Idrissi NB, *et al.* Human coronavirus NL63 and 229E seroconversion in
453 children. *J Clin Microbiol* 2008; **46**: 2368–73.

- 454 33 Garbino J, Crespo S, Aubert J-D, *et al.* A prospective hospital-based study of the clinical impact of
455 non-severe acute respiratory syndrome (Non-SARS)-related human coronavirus infection. *Clin*
456 *Infect Dis* 2006; **43**: 1009–15.
- 457 34 Greenberg SB. Update on rhinovirus and coronavirus infections. *Semin Respir Crit Care Med* 2011;
458 **32**: 433–46.
- 459 35 Su S, Wong G, Shi W, *et al.* Epidemiology, Genetic Recombination, and Pathogenesis of
460 Coronaviruses. *Trends Microbiol* 2016; **24**: 490–502.
- 461 36 Huang AT, Garcia-Carreras B, Hitchings MDT, *et al.* A systematic review of antibody mediated
462 immunity to coronaviruses: antibody kinetics, correlates of protection, and association of
463 antibody responses with severity of disease. *medRxiv* 2020; : 2020.04.14.20065771.
- 464 37 Severance EG, Bossis I, Dickerson FB, *et al.* Development of a Nucleocapsid-Based Human
465 Coronavirus Immunoassay and Estimates of Individuals Exposed to Coronavirus in a U.S.
466 Metropolitan Population. *Clin Vaccine Immunol* 2008; **15**: 1805–10.
- 467 38 Van Der Hoek L, Pyrc K, Berkhout B. Human coronavirus NL63, a new respiratory virus. *FEMS*
468 *Microbiol Rev* 2006; **30**: 760–73.
- 469 39 Peng Y, Mentzer AJ, Liu G, *et al.* Broad and strong memory CD4⁺ and CD8⁺ T cells induced by SARS-
470 CoV-2 in UK convalescent COVID-19 patients. *bioRxiv* 2020; : 2020.06.05.134551.
- 471 40 Khan S, Nakajima R, Jain A, *et al.* Analysis of Serologic Cross-Reactivity Between Common Human
472 Coronaviruses and SARS-CoV-2 Using Coronavirus Antigen Microarray. *bioRxiv* 2020; :
473 2020.03.24.006544.
- 474
- 475

476 **Figures legends**

477 **Figure 1:** Flowchart of inclusion of children (n=775)

478 **Figure 2:** Evolution of the prevalence of antibodies and neutralizing activity to SARS-CoV-2 in children
479 during the epidemic. A) Seroprevalence rates in the HOS and MIS populations. Seronegative (light
480 grey) and seropositive (dark grey) children according to the week of sampling are presented. The black
481 curve describe the percentage of seroprevalence over the time. B) Proportion of serums with
482 neutralizing (PNT) activity among Ab positive sera. The number of PNT positive (respectively in dark
483 grey and black for HOS-P and MIS-P patients) and negative (in light grey and white for HOS-P and MIS-
484 P patients, respectively) sera is presented over the time.

485 **Figure 3:** SARS-CoV-2 and seasonal HCoV Ab responses in HOS-P, MIS-P and CTL children. Ab directed
486 against S (panel A), N (panel B), S1 (panel C) and S2 (panel D) are described for each group of patients
487 (HOS-P in green, MIS-P in blue, and CTL in pink). Level of neutralizing activity assessed by pseudo-
488 neutralization (panel E) or plaque reduction neutralization (panel F) is presented for HOS-P and MIS-P
489 groups.

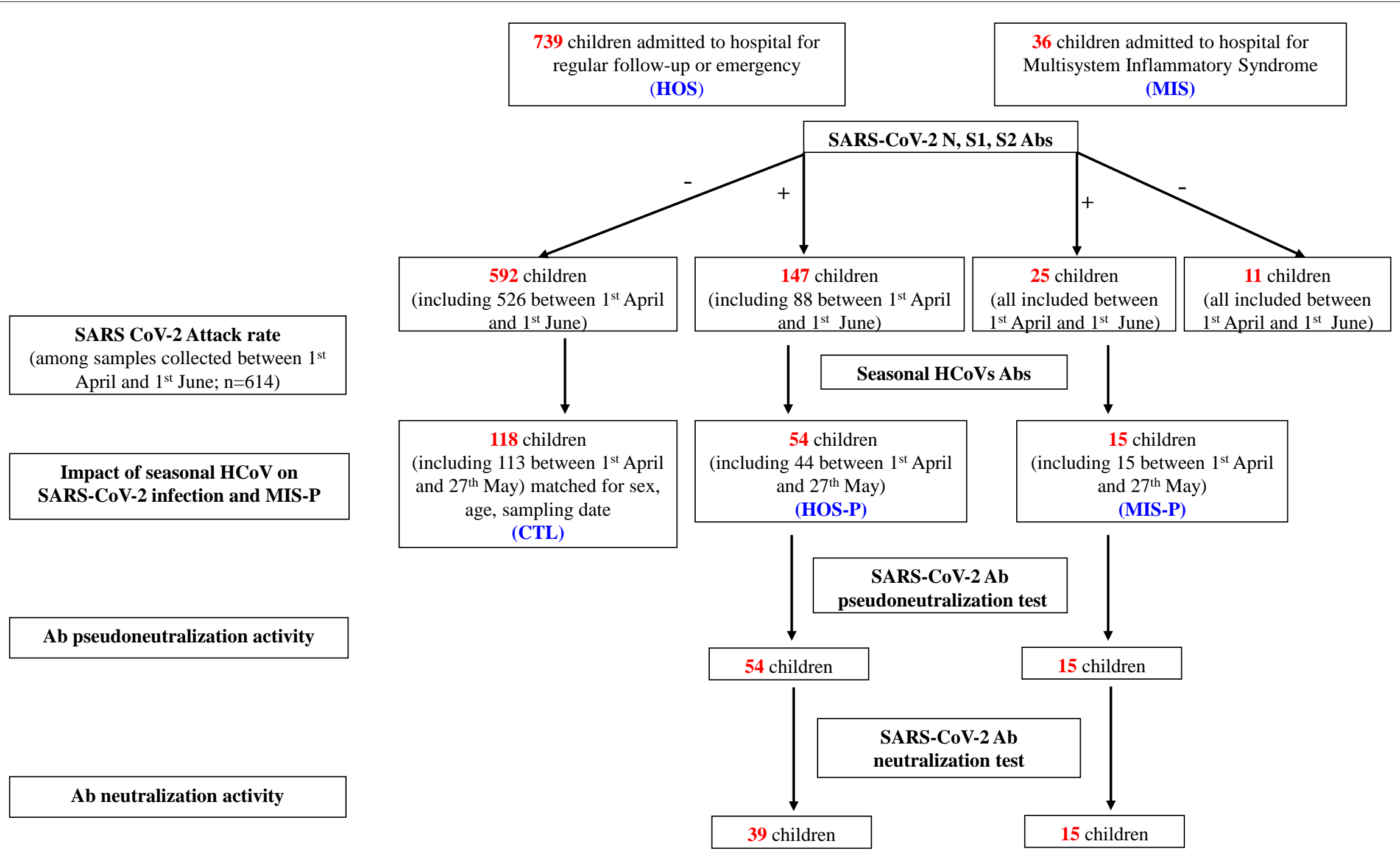
490 **Figure 4:** Principal Component Analysis of antibodies against SARS-CoV-2 S, S1, S2, N and seasonal
491 HCoV S and N antigens. The PCA shows (A) the distribution of all Ab against SARS-CoV-2 mainly
492 correlated with the x-axis and those corresponding to seasonal HCoVs with the y-axis; and (B) Abs
493 against seasonal HCoVs do not separate HOS-P and MIS-P from CTL children. This demonstrates the
494 independence of Ab responses between SARS-CoV-2 and HCoVs.

Table 1: Demographic and clinical characteristics of children with SARS-CoV-2 Ab versus negative controls. HOS stands for patients who did not develop a Multi-systemic Inflammatory Syndrome (MIS). Data as mean (SD) or %.

	HOS-seronegative (n=603)	HOS-seropositive (n=147)	MIS-seropositive (n=25)	p (HOS-seropositive vs HOS-seronegative)	p (MIS-seropositive vs HOS-seronegative)	p (HOS-seropositive vs MIS-seropositive)
Demographic characteristics						
Age , years	7.9 (5.7)	8.5 (5.6)	9.1 (4.3)	NS	NS	NS
Male sex (%)	54	47	40	NS	NS	NS
Reason for hospitalization						
Systematic monitoring (%)	59.3	51	0	NS	<10 ⁻⁴	0.004
Pediatric emergency (%)	10.1	16.3	100	0.03	<10 ⁻⁶	<10 ⁻⁶
Surgery (%)	11.9	10.8	0	NS	NS	NS
Chronic disease exacerbation (%)	2.3	3.4	0	NS	NS	NS
Others	16.4	18.5	0	NS	<10 ⁻⁶	<10 ⁻⁶
Comorbidities						
No comorbidity (%)	48.7	42.1	88	NS	<10 ⁻⁴	<10 ⁻⁴
Diabetes (%)	2.5	2.7	0	NS	NS	NS
Immunosuppression (%)	8.3	13.6	0	NS	0.01	0.01
Cancer in the 3 previous years (%)	3	5.4	0	NS	NS	NS
Others (%)	37.5	36.2	12	NS	0.04	0.004
History consistent with COVID in the 3 previous months						
Case contact (%)	7.3	12.9	28	0.02	0.004	NS
No symptoms (%)	71.9	69.4	76	NS	NS	NS
Fever (%)	14.1	16.3	4	NS	NS	NS
Diarrhea, abdominal pain, vomiting (%)	16.2	13.6	4	NS	NS	NS
Asthenia (%)	6	9.5	0	NS	NS	NS
Cough (%)	3.9	2	0	NS	NS	NS
Dyspnea/shortness of breath (%)	1.1	3.4	4	<0.05	NS	NS
Headache (%)	1.3	5.4	0	0.002	NS	NS
Neurological disorders (%)	4.8	10.2	4	0.01	NS	NS
Rhino-pharyngitis (%)	1.9	4.7	0	0.04	NS	NS
Dermatological symptoms	3.6	5.4	0	NS	NS	NS

Table 2: prevalence of antibodies to seasonal HKU1, OC43, NL63, 229E and SARS-CoV-2 spike and nucleoprotein in HOS-P, MIS-P and CTL children. NA: not applicable. NS: non-significant.

Virus	Antigen	HOS-P SARS-CoV-2 +	MIS-P SARS-CoV-2 +	CTL SARS-CoV-2 -	p (CTL vs HOSP-P)	p (CTL vs MIS-P)	p (HOSP-P vs MIS-P)	Chi-2 indep.
SARS-CoV-2	S	31/62 (50.0%)	17/19 (89.5%)	1/127 (0.79%)	< 10-8	< 10-8	0.0027	< 2.2e-16
	N	33/62 (53.2%)	18/19 (94.7%)	0/127 (0.0%)	< 10-8	< 10-8	0.0008	< 2.2e-16
HCoV-HKU1	S	54/62 (87.1%)	19/19 (100.0%)	111/127 (87.4%)	NS	NS	NS	NS
	N	23/62 (37.1%)	13/19 (68.4%)	59/127 (46.5%)	NS	NS	0.03234	NS
HCoV-OC43	S	58/62 (93.5%)	19/19 (100.0%)	123/127 (96.9%)	NS	NS	NS	NS
	N	22/62 (35.5%)	14/19 (73.7%)	50/127 (39.4%)	NS	0.00624	0.00763	0.00968
HCoV-229E	S	49/62 (79.0%)	15/19 (78.9%)	87/127 (68.5%)	NS	NS	NS	NS
	N	15/62 (24.2%)	10/19 (52.6%)	38/127 (29.9%)	NS	NS	0.03903	NS
HCoV-NL63	S	NA	NA	NA	NA	NA	NA	NA
	N	56/62 (90.3%)	17/19 (89.5%)	112/127 (88.2%)	NS	NS	NS	NS



739 children admitted to hospital for regular follow-up or emergency
(HOS)

36 children admitted to hospital for Multisystem Inflammatory Syndrome
(MIS)

SARS-CoV-2 N, S1, S2 Abs

592 children
(including 526 between 1st April and 1st June)

147 children
(including 88 between 1st April and 1st June)

25 children
(all included between 1st April and 1st June)

11 children
(all included between 1st April and 1st June)

SARS CoV-2 Attack rate
(among samples collected between 1st April and 1st June; n=614)

Impact of seasonal HCoV on SARS-CoV-2 infection and MIS-P

Ab pseudoneutralization activity

Ab neutralization activity

Seasonal HCoVs Abs

118 children
(including 113 between 1st April and 27th May) matched for sex, age, sampling date
(CTL)

54 children
(including 44 between 1st April and 27th May)
(HOS-P)

15 children
(including 15 between 1st April and 27th May)
(MIS-P)

SARS-CoV-2 Ab pseudoneutralization test

54 children

15 children

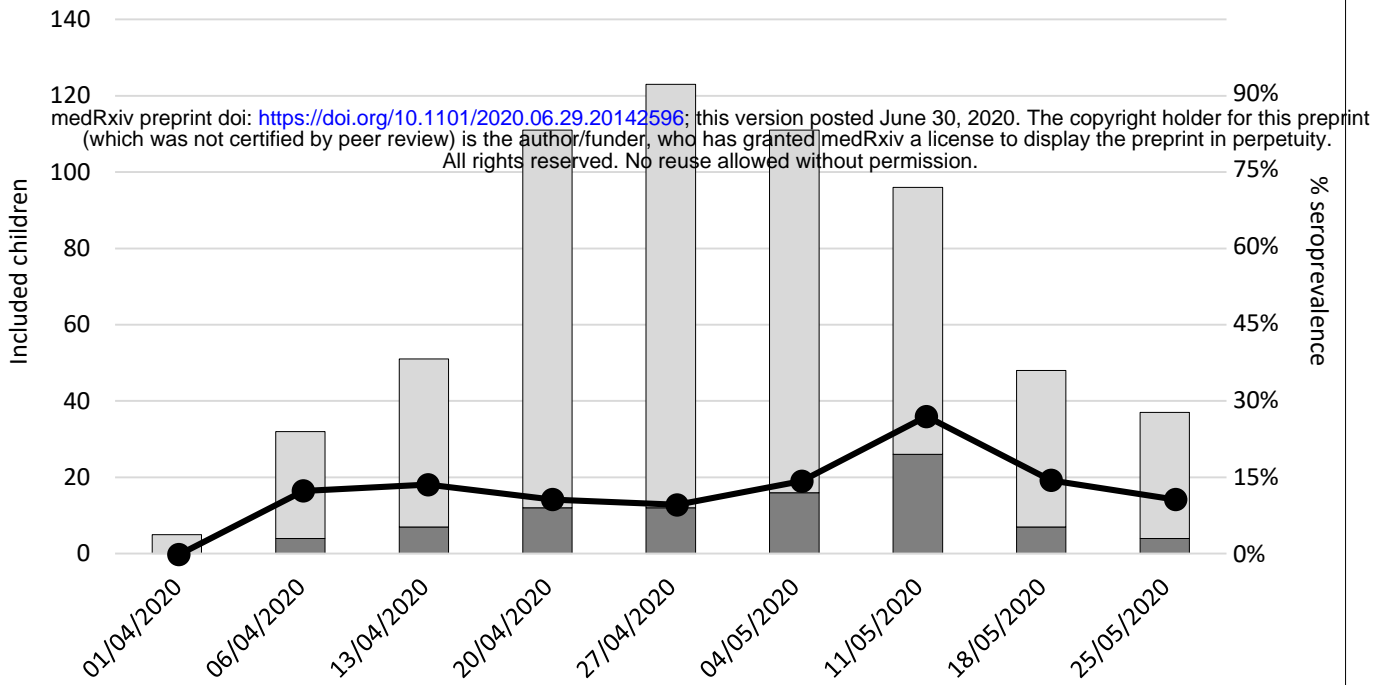
SARS-CoV-2 Ab neutralization test

39 children

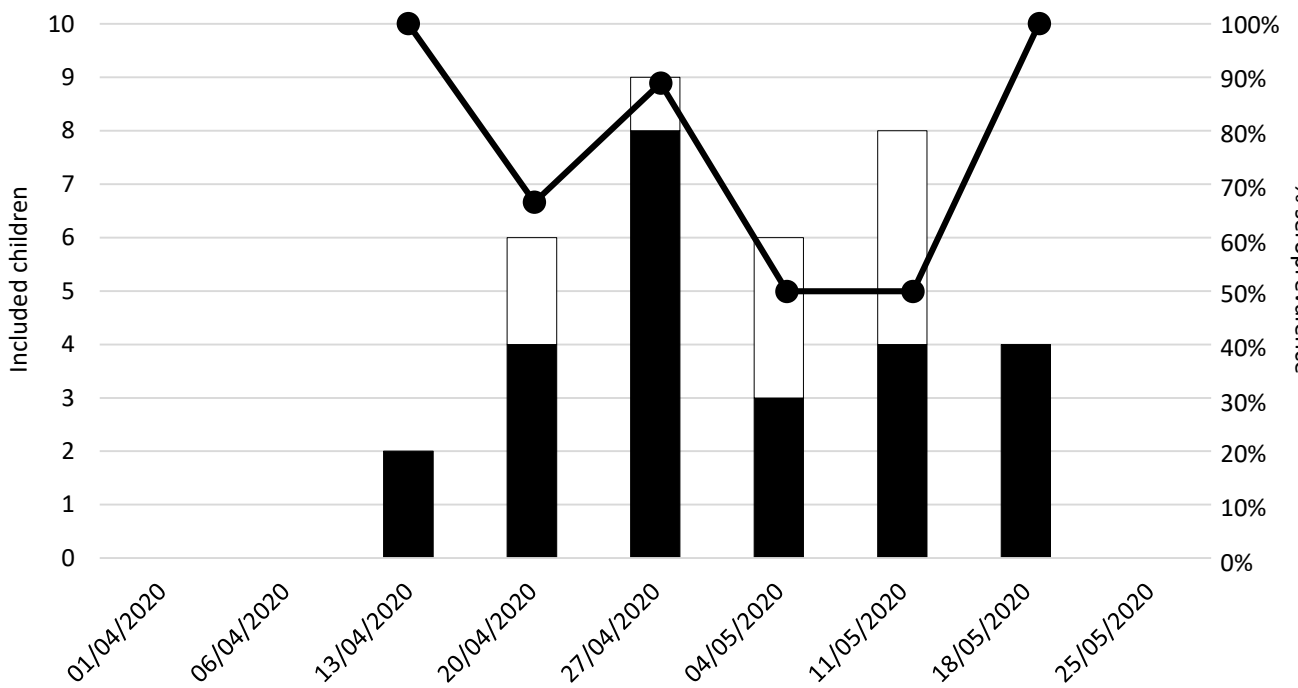
15 children

A. Seroprevalence rates in the HOS and MIS populations

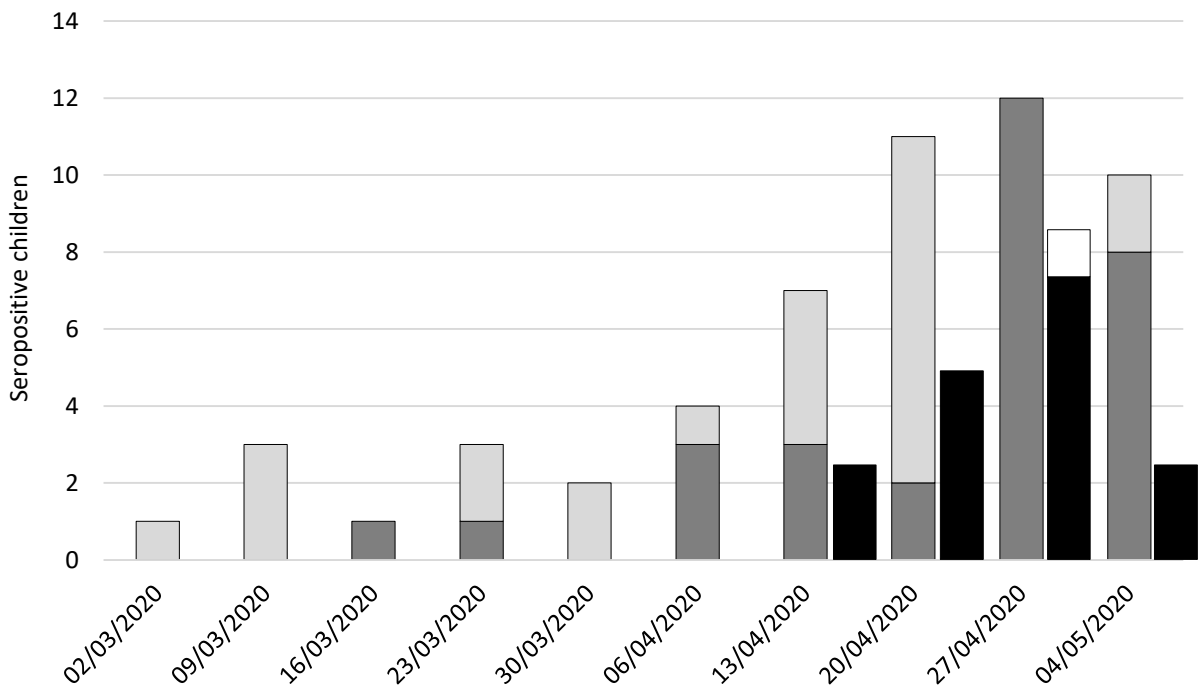
Hospitalized children (HOS)



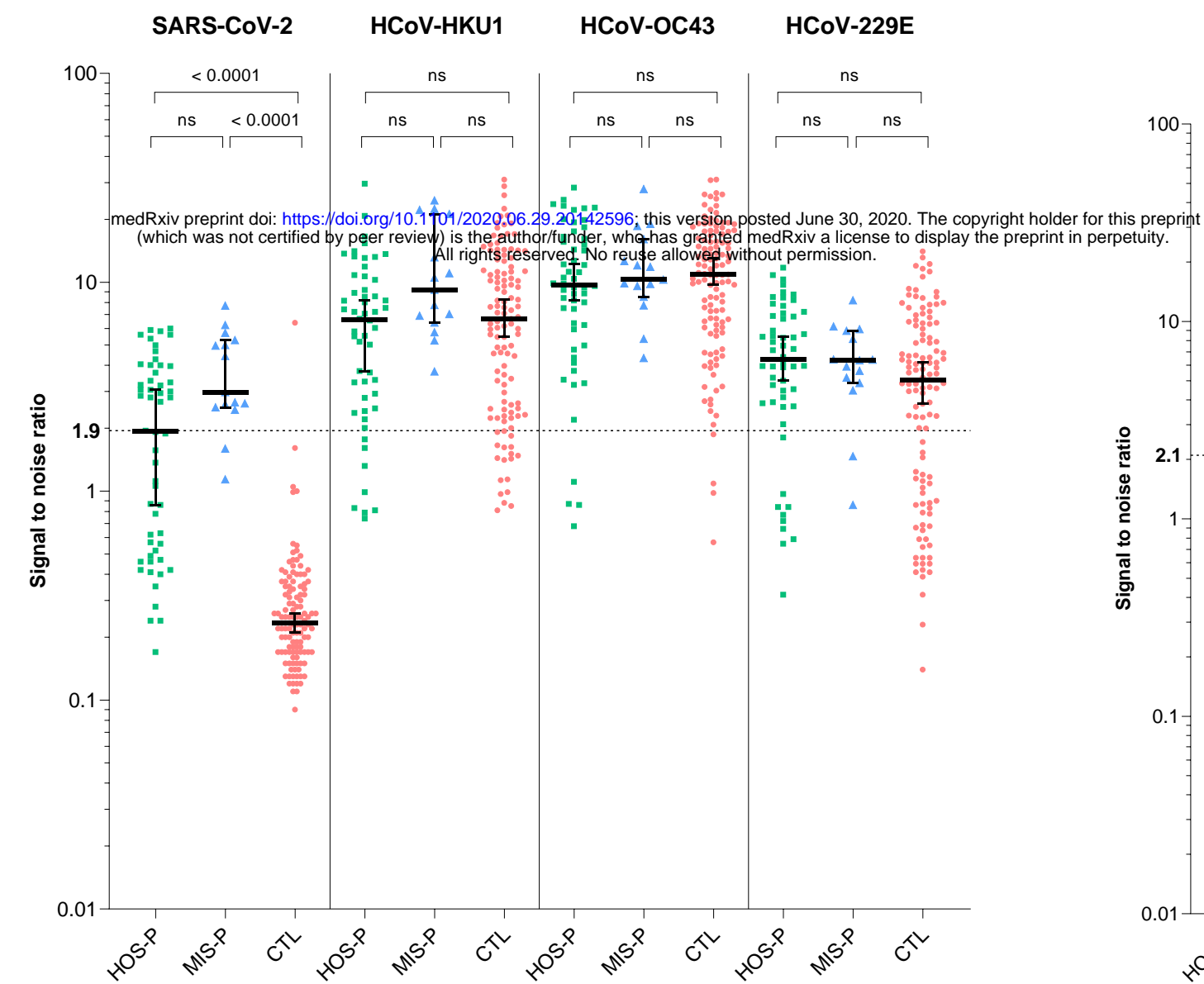
Children with Multisystem Inflammatory Syndrome (MIS)



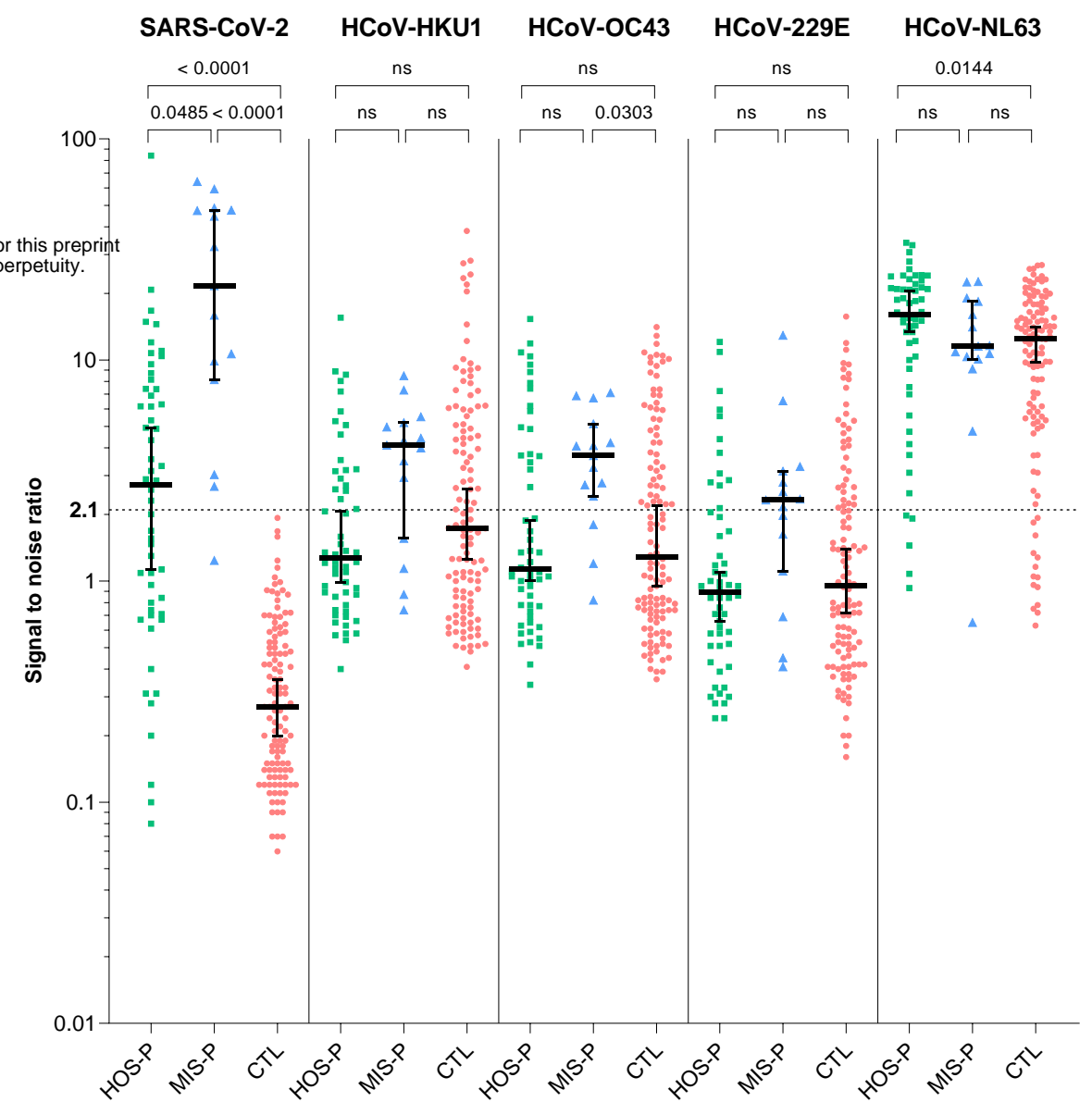
B. Proportion of serums with neutralizing activity among Ab positive sera



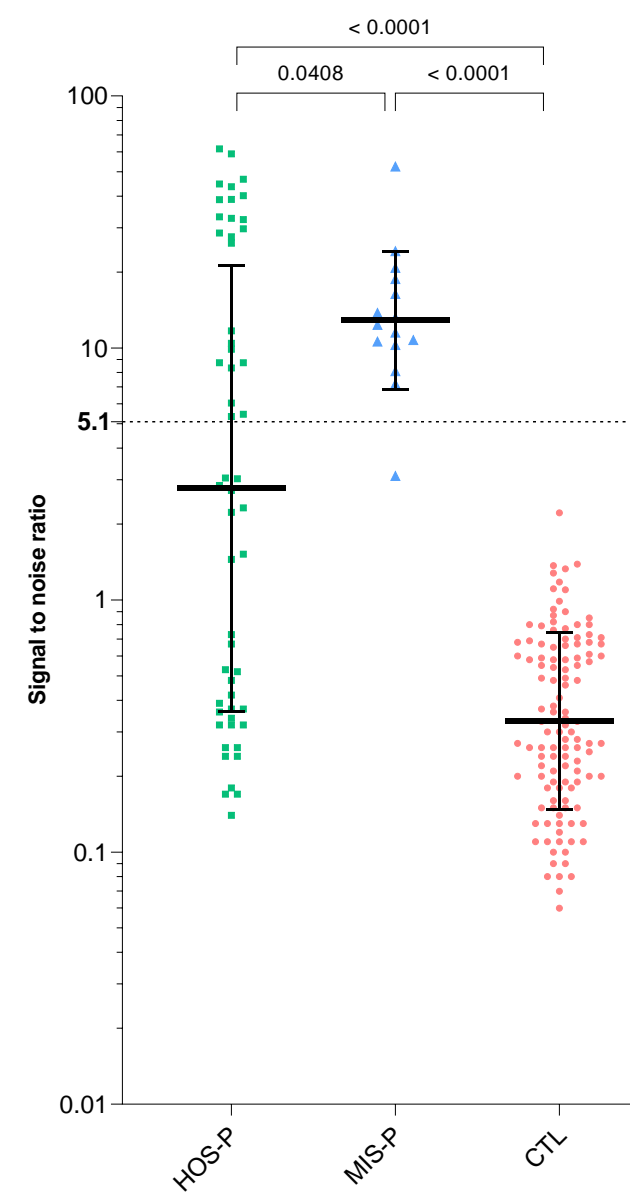
A. Full S ectodomain



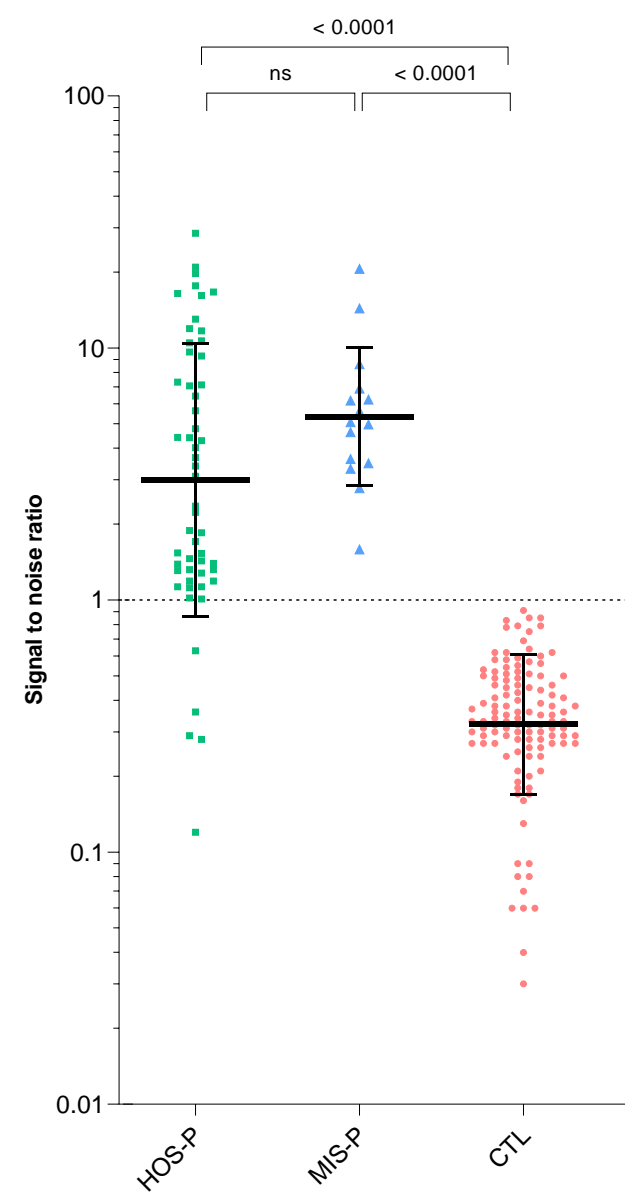
B. C-terminal domain of N



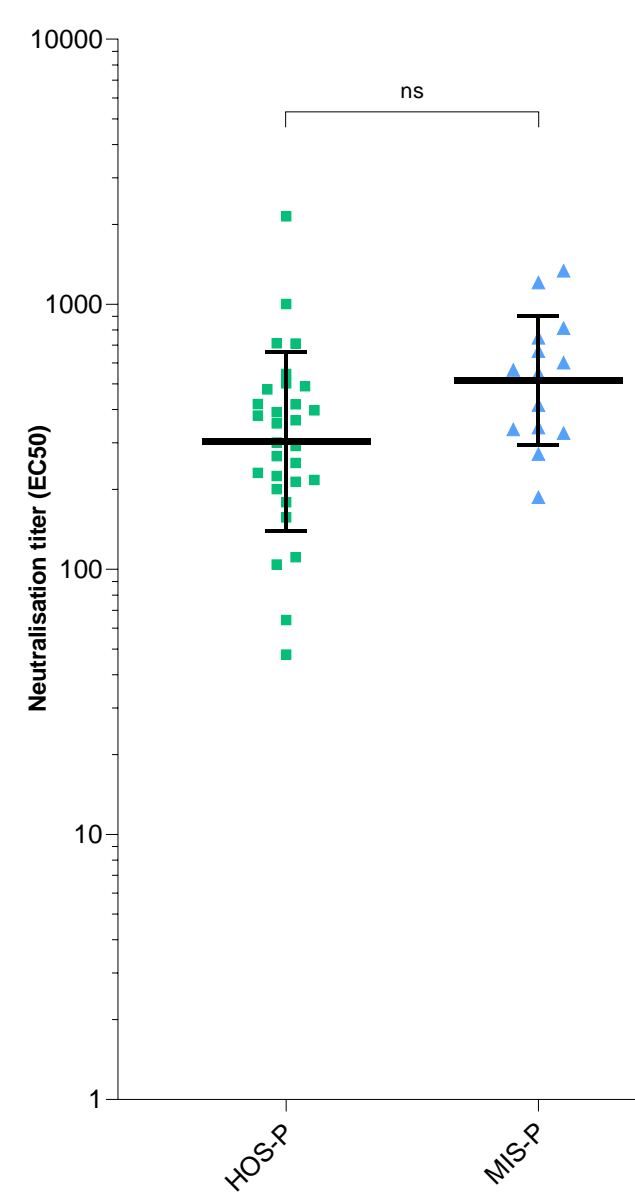
C. S1 domain



D. S2 domain



E. PNT



F. PRNT

