

1 Development of a SARS-CoV-2 total antibody assay and the dynamics of antibody 2 response over time in hospitalized and non-hospitalized patients with COVID-19

3

4 Erik H. Vogelzang [1,2],^a Floris C. Loeff [3,4],^a Ninotska IL Derksen [3], Simone Kruithof [3], Pleuni
5 Ooijevaar-de Heer [3], Gerard van Mierlo [3], Federica Linty [5], Juk Yee Mok [6], Wim van Esch [6],
6 Sanne de Bruin [7], Alexander P.J. Vlaar [7], AmsterdamUMC COVID-19 biobank study group,^b Bart
7 Seppen [1], Maureen Leeuw [1], Anne J.G. van Oudheusden [8], Anton G.M. Buiting [8], Kin Ki Jim
8 [2,9], Hans Vrielink [10], Francis Swaneveld [10], Gestur Vidarsson [5], C. Ellen van der Schoot [5],
9 Peter Wever [9], Wentao Li [11], Frank van Kuppeveld [11], Jean-Luc Murk [8], Berend Jan Bosch
10 [11], Gerrit-Jan Wolbink [1,3,12], Theo Rispens [3]^c

11

12 [1] Department of Rheumatology, Amsterdam Rheumatology and immunology Center | Reade, Amsterdam,
13 the Netherlands

14 [2] Department of Medical Microbiology and Infection Control, Amsterdam UMC, location AMC, Amsterdam,
15 the Netherlands

16 [3] Department of Immunopathology, Sanquin Research & Landsteiner Laboratory Academic Medical Centre,
17 Amsterdam, the Netherlands

18 [4] Biologics Laboratory, Sanquin Diagnostic Services, Amsterdam, the Netherlands

19 [5] Department of Experimental Immunohematology, Sanquin Research & Landsteiner Laboratory Academic
20 Medical Centre, Amsterdam, the Netherlands

21 [6] Sanquin Reagents, Amsterdam, the Netherlands

22 [7] Department of Intensive Care Medicine, Amsterdam UMC, Location AMC, Amsterdam, the Netherlands

23 [8] Department of Medical Microbiology and Infection Control, Jeroen Bosch Hospital, 's Hertogenbosch, the
24 Netherlands

25 [9] Departments of Medical Microbiology, Jeroen Bosch Hospital, 's Hertogenbosch, the Netherlands

26 [10] Department of Transfusion Medicine, Sanquin Blood Bank, Amsterdam, the Netherlands

27 [11] Virology Division, Department of Infectious Diseases and Immunology, Faculty of Veterinary Medicine,
28 Utrecht University, Utrecht, the Netherlands.

29 [12] Department of Rheumatology, Onze Lieve Vrouwe Gasthuis, Amsterdam, The Netherlands

30 a) contributed equally

31 b) see appendix for author list of the study group

32 c) corresponding author: t.rispens@sanquin.nl

33 Abstract

34 SARS-CoV-2 infections often cause only mild disease that may evoke relatively low
 35 antibody titers compared to patients admitted to hospitals. Generally, total antibody
 36 bridging assays combine good sensitivity with high selectivity. Therefore, we developed
 37 sensitive total antibody bridging assays for detection of SARS-CoV-2 antibodies to the
 38 receptor-binding domain (RBD) and nucleocapsid protein (NP), in addition to conventional
 39 isotype-specific assays. Antibody kinetics was assessed in PCR-confirmed hospitalized
 40 COVID-19 patients (n=41) and three populations of patients with COVID-19 symptoms not
 41 requiring hospital admission: PCR-confirmed convalescent plasmapheresis donors (n=182),
 42 PCR-confirmed hospital care workers (n=47), and a group of longitudinally sampled
 43 symptomatic individuals highly suspect of COVID-19 (n=14). In non-hospitalized patients, the
 44 antibody response to RBD is weaker but follows similar kinetics as has been observed in
 45 hospitalized patients. Across populations, the RBD bridging assay identified most patients
 46 correctly as seropositive. In 11/14 of the COVID-19-suspect cases, seroconversion in the RBD
 47 bridging assay could be demonstrated before day 12; NP antibodies emerged less
 48 consistently. Furthermore, we demonstrated the feasibility of finger prick sampling for
 49 antibody detection against SARS-CoV-2 using these assays. In conclusion, the developed
 50 bridging assays reliably detect SARS-CoV-2 antibodies in hospitalized and non-hospitalized
 51 patients, and are therefore well-suited to conduct seroprevalence studies.

52

53 Introduction

54 In December 2019, the first cases of atypical pneumonia were reported in China.[1]
 55 The causative agent was a β -coronavirus; now known as severe acute respiratory
 56 syndrome coronavirus 2 (SARS-CoV-2). SARS-CoV-2 is related to the human severe acute
 57 respiratory syndrome coronavirus 1 (SARS-CoV-1) and BatCoV RaTG13.[2] In the following
 58 months, an increase in reverse transcription-polymerase chain reaction (RT-PCR) confirmed
 59 cases of coronavirus infectious disease 2019 (COVID-19) were reported in various
 60 countries resulting in the World Health Organization (WHO) declaring a pandemic. RT-PCR-
 61 based diagnostics requires active virus shedding. As such, many COVID-19 patients that
 62 were not hospitalized remain undiagnosed, and the true extent of SARS-CoV-2 infections is
 63 unquestionably higher than initially reported.[3,4] This is confirmed by several
 64 seroprevalence studies that have since been conducted.[5–7] However, insight into the
 65 dynamics and variability of the antibody response in non-hospitalized patient populations,
 66 with only mild symptoms remains to be elucidated. Furthermore, the suitability of various
 67 assays to assess these – presumably partly rather weak – responses, is a point of concern.

68 The coronavirus comprises four common structural proteins; the spike (S), envelope
 69 (E), membrane (M) and nucleocapsid (N) proteins.[8,9] Previous studies on SARS-CoV-1
 70 identified the S protein as a major antigen and antibodies against the S protein were
 71 demonstrated to have neutralizing capacity.[10–14] The S protein and more specifically
 72 the receptor-binding domain (RBD) in subunit S1 in SARS-CoV-2 is reported to be an
 73 immunodominant epitope [40], and has been demonstrated to have negligible cross-
 74 reactivity with human coronaviruses HKU1, 229E, NL63 and OC43 or Middle East Respiratory
 75 Syndrome coronavirus (MERS-CoV) and only to SARS-CoV-1.[15] The N protein (NP) in SARS-
 76 CoV-1 is also immunogenic, eliciting an antibody response.[16,17]. Studies on SARS-CoV-1
 77 and SARS-CoV-2 reported that antibodies against the N protein appeared earlier than those
 78 directed at the S protein.[18–22] Furthermore, in SARS-CoV-2, immune-dominance of the N-
 79 antigen in COVID-19 patients was described.[23] Implementing validated serological assays
 80 will provide much-needed information on transmission, the ascertainment of the true
 81 infection rate, corresponding mortality and morbidity and the immune response. Also, it will
 82 allow a better understanding of the dynamics of SARS-CoV-2 in the general population.

83 Here, we describe the development of a serological bridging assay for the detection
 84 of antibodies against the RBD and NP of SARS-CoV-2. Bridging assays, or double-antigen

sandwich assay, have the advantage of being able to detect antibodies regardless of isotype, which potentially makes these assays maximally sensitive for seroprevalence studies. Here, we used these assays, together with isotype-specific assays, to assess the antibody response in several hospitalized and non-hospitalized COVID-19 patient populations. In particular, we describe the early antibody response to SARS-CoV-2 in non-hospitalized individuals highly suspect of COVID-19, during the symptomatic stages of disease.

Materials and Methods

Samples and patients

Serum or plasma samples obtained from RT-PCR positive SARS-CoV-2 hospitalized and non-hospitalized recovered adult patients (n=182) who underwent plasmapheresis at Sanquin, the national blood bank, Amsterdam, the Netherlands were included.

Also, serum samples from hospitalized SARS-CoV-2 RT-PCR confirmed patients (n=41) at the Jeroen Bosch Hospital, Den Bosch, the Netherlands and Amsterdam University Medical Centre, Location AMC, Amsterdam, the Netherlands were included.

From the Elisabeth-TweeSteden Hospital, Tilburg, the Netherlands serum samples of SARS-CoV-2 RT-PCR confirmed healthcare workers (HCWs) were obtained (n=47) at various time points. None of the HCWs were admitted to the hospital for COVID-19.

From the Amsterdam Rheumatology and immunology Centre, location Reade, The Netherlands, serum samples were obtained at regular intervals in a group of otherwise healthy volunteers which based on recent travel to an endemic area abroad were highly suspect for COVID-19 (n=7) and household contacts (n=2) of this group that did not go abroad. Moreover, serum samples were collected from a SARS-CoV-2 RT-PCR positive volunteer and close contacts, all with no comorbidities. (n=5). All 14 volunteers had symptoms not requiring hospital admission. Samples were collected at regular intervals after the onset of potential COVID-19 disease symptoms. The average age of participants was 31 years (SD 4.2), 7 (50%) were female and none reported relevant comorbidities.

Negative control serum samples were included from healthy blood donors collected by Sanquin (n=307). The negative control samples had been collected from the Dutch population before mid-January 2020, thus prior to the first reported SARS-CoV-2 case in the Netherlands (27 February 2020).

This study has been conducted in accordance with the ethical principles set out in the declaration of Helsinki and all participants provided written informed consent, if applicable. Approval was obtained from the Medical Ethics Committees from the Academic Medical Center, VU University Medical Center and Elisabeth-TweeSteden Hospital.

Development of SARS-CoV-2 RBD and NP based bridging assays

The RBD-mFc and RBD-ST proteins were produced as described by Okba et al.[15] The NP was produced in HEK cells with HAVT20 leader peptide, 10xhis-tag and a BirA-tag as described by Dekkers et al.[24] MaxiSORP microtiter plates (ThermoFisherScientific, US) were coated with 100 µL per well 0.125 µg/mL RBD-mFc or NP in PBS overnight at 4°C. Plates were washed five times with PBS supplemented with 0.02% polysorbate-20 (PBS-T). Samples were diluted 10-fold in PBS-T supplemented with 0.3% gelatin (PTG) and incubated on the plate (100 µL) for 1h at room temperature (RT) while shaking. After washing five times with PBS-T, 100 µL per well biotinylated RBD-ST (EZ-Link Sulfo-NHS-LC-Biotin, Thermo Fisher) or biotinylated NP (via the BirA tag as described in [24]) was added at 0.5 µg/mL or 0.015 µg/mL, respectively, in PTG and incubated for 1h at RT, followed by incubation for 30 minutes with streptavidin-poly-HRP (Sanquin). Plates were washed five times with PBS-T, and 100 µL of TMB substrate (100 µg/mL) and 0.003% (v/v) hydrogen peroxide (Merck, Germany) in 0.11 M sodium acetate buffer (pH 5.5) was added to each well. A total of 100 µL of 0.2 M H₂SO₄ (Merck, Germany) was added to stop the reaction. Absorbance was measured at 450 nm and 540 nm. The difference was used to evaluate antibody binding. OD values were normalized to readings of a reference serum pool that was included on each plate and reported as nOD.

SARS-CoV-2 RBD and NP isotype-specific assays

MaxiSORP microtiter plates were coated with 1.0 µg/mL RBD-ST or NP, or 4.0 µg/mL monoclonal mouse antihuman IgM (MH15, Sanquin, the Netherlands) in PBS overnight at 4°C. Following washing with PBS-T, samples were diluted 100-fold/200-fold in PTG and incubated for 1h at RT. After washing, 0.5 µg/mL HRP-conjugated monoclonal mouse antihuman IgG (MH16, Sanquin) or antihuman IgA (MH14, Sanquin) was added, diluted in PTG and incubated for 1h. Following enzymatic conversion of TMB substrate, absorbance was measured at 450 nm and 540 nm and the difference used to evaluate antibody binding

as described above. For IgM, the assay was finished using biotinylated RBD-ST as described above for the bridging assay.

Data processing and analysis

Statistical analysis were carried out using Graphpad Prism 7.

Results

Total antibody assays

Total antibody bridging assays depend on the multivalency of antibodies of any isotype to generate a bridge between antigen for capture as well as detection. Therefore, antigen coating density is generally a critical parameter. We set up bridging assays for RBD and NP antigens and optimized antigen coating density to obtain optimal differentiation between specific and non-specific signals using a small set of sera from COVID-19 patients and pre-outbreak healthy donors (HD), see Figure S1. A good reproducibility between runs was observed (Figure S1). After an initial evaluation of 80 pre-outbreak samples, we arrived at a cut-off value of 0.1 nOD, anticipated to provide ca. 99% specificity. Subsequent samples were measured, retested if initially positive (>0.1 nOD), and only considered positive if the repeated measurement was also >0.1 nOD. Analogously, a cut-off value of 0.14 nOD was set for the NP bridging assay.

Seroprevalence in different study populations

We assessed seroprevalence with the RBD bridging assay (RBD-Ab) and NP bridging assay (NP-Ab) in several different study populations of PCR-confirmed COVID-19 patients as well as pre-outbreak HD. Only two (0.7%) positive samples were detected in pre-outbreak HD (n=307) using the RBD-Ab, whereas seven (2.5%) positive samples were detected using the NP-Ab (Figure 1). In 40 out of 41 (97.5%) and 39 out of 41 (95.1%) hospitalized patients with active, RT-PCR confirmed COVID-19 we detected antibodies against the RBD or NP, respectively. In PCR-confirmed non-hospitalized convalescent HCW's (n=47) antibodies against RBD or NP were detected in 45 (95.7%) and 39 (83.0%) samples, respectively. Antibodies against RBD were detected in 180 (98.9%) and for the NP in 175 (96.2%) of PCR-confirmed convalescent plasmaphereses donors (n=182), which consists both of patients with and without prior hospitalization due to COVID-19. In all but one case, samples

negative in the RBD-Ab assay were also negative in the NP-Ab assay (Figure 4). The above-described seroprevalences demonstrated a good overall sensitivity and specificity of the RBD-Ab (98.1% and 99.3%), and somewhat less for the NP-Ab (93.7% and 97.5%).

Antibody response at different time points

To study the effect of time on the seroprevalence and antibody levels determined by using the RBD-Ab and the NP-Ab, we stratified the samples of the non-hospitalized cases (plasmapheresis donors and HCWs) for different days since symptom onset (information available for n=167; Figure 2). As comparison, in addition to the hospitalized patients with active disease (approx. 8 – 23 day post symptom onset), convalescent cases that were previously admitted to the hospital are also included (n = 27; approx. 20 – 66 post symptom onset). There is an increase in nOD over time for the RBD-Ab in hospitalized cases and a similar, non-significant trend in non-hospitalized cases. However, there is no apparent effect of time after onset of symptoms on the detection of antibodies in the RBD-Ab or NP-Ab assay.

To obtain insight into the dynamics of the different isotypes, we also measured antibodies using assays for the detection of IgM, IgG, and IgA (Figure 2). For the antibody response to the RBD, there is a (non-significant) trend towards declining IgM and IgA levels as time progresses in both hospitalized and non-hospitalized patients. Hospitalized patients have significantly higher IgG levels later in time. In non-hospitalized patients, the IgG response rises slowly over time and gains prominence relative to other isotypes at later time points (Figure S2), in line with expectations. At least up to 60 days after symptom onset substantial amounts of IgG to the RBD can be detected in this population. In comparison to hospitalized convalescent patients, the IgG response in non-hospitalized patients is significantly weaker, as shown in Figure 2. A similarly weaker IgG response is also observed against the NP.

Antibody kinetics in non-hospitalized patients at early time points

To obtain a better insight into the antibody response against SARS-CoV-2 and thus the seroprevalence in a specific population, we tested sequentially collected sera from a group of non-hospitalized and otherwise healthy individuals who were highly suspected of having contracted COVID-19 (Reade patient cohort; Figure 3). Day 3 post symptom onset

samples were available for two individuals and were negative in both the bridging assays as well as in the IgM, IgG, and IgA assays. Within 12 days post symptom onset, antibodies against the RBD were detected in 11 out of 14 (78.6%) patients as compared to 8 out of 14 (53.1%) against NP antibodies, as shown in Figure 3, using the bridging assays. At day 60, one of the previously negative samples became positive in both bridging assays.

Figure 3 shows the antibody kinetics for IgM, IgG and IgA. Most patients (n=9) seroconverted for IgG within 15 days post symptom onset, although three patients seroconverted later. The slow appearance of IgG antibodies to RBD is clearly seen in this population. Interestingly, at two months, IgG anti-RBD appears to be declining again, suggesting a lack of sustained overall anti-RBD response in this group of patients. The antibody response to NP is not detectable in most patients around day 10 both in the NP-Ab and NP-IgG assays, and remains weak in many patients at later time points.

Comparison of assay formats

The RBD-Ab assay identifies positive patients most reliably, with few false-positive cases. Sensitivity and/or specificity could theoretically be enhanced by combining two or more assays. When comparing the RBD-Ab with the NP-Ab assay, we observe that for HD, none of the samples were positive in both assays as shown in Figure 4. Requiring both assays to be positive would therefore result in enhanced specificity, albeit with reduced sensitivity. Also, for the RBD-IgG assay it appears that negative control samples either have elevated signals in either this assay or the RBD-Ab, but not both (Figure 5). There is a moderately strong correlation between RBD-Ab and RBD-IgG (Spearman $r = 0.69$, $p < 0.0001$) across the populations; whereas the correlation between RBD-Ab and NP-Ab is moderate ($r = 0.58$, $p < 0.0001$).

Finger prick sampling

A relatively low volume of serum is needed for the developed assay to assess the antibody response, therefore making it well suited for finger prick sampling. A small number of samples (n = 11) was obtained by finger prick sampling, rather than obtained by venipuncture. Antibodies were detected by the RBD-Ab assay and compared to a matching venipuncture draw (Figure 6). The results suggest that a finger prick is an equivalent method for drawing blood when using this assay to detect antibodies against the RBD.

Discussion

In this study, we describe the development of sensitive serological bridging assays based on the RBD and NP to detect antibodies against SARS-CoV-2. Assay performance was evaluated in serum samples of different patient populations (hospitalized and non-hospitalized) and the RBD bridging assay was found to best discriminate between cases and pre-outbreak controls across different time points, especially in individuals with COVID-19 symptoms who did not require hospital admission. We also show the early antibody kinetics in a group of non-hospitalized individuals, highly suspected of having contacted COVID-19, during their symptomatic phase. Finally, we demonstrate the feasibility of using finger prick sampling for the detection of antibodies against SARS-CoV-2.

In recent studies, seroconversion of SARS-CoV-2 infected hospitalized patients usually occurred between 5-14 days.[15,20,21,25,26] Our study demonstrated a similar result in non-hospitalized patients. Since an adequate antibody response requires time to develop, false-negative results will occur depending on the timing of sampling independent of the type of assay used, thereby influencing seroprevalence study results. In one patient followed over time, seroconversion occurred after day 15. Although this patient went to work (not healthcare related) and did groceries, other public measures regarding SARS-CoV-2 were followed, and this is probably a late seroconversion.

In the non-hospitalized patients, the isotype-specific antibody response to RBD follows a pattern similar to hospitalized patients [41], with a relatively late appearance of IgG antibodies. Although the IgG levels are significantly lower in the non-hospitalized population, these antibodies nevertheless are present in readily detectable amounts up to 60 days after symptom onset. The long-term persistence of these responses remains to be investigated.

Bridging assay, or homologous double-antigen sandwich immunoassays have found firm ground in the assessment of (weak) immune responses against biopharmaceutical drugs [27,28], but are as yet relatively uncommon for measurement of antibodies to viral antigens. Nevertheless, a commercially available assay using a similar format for SARS-CoV-2 has been described.[29] Advantages of this assay type include the ability to detect antibodies of any isotype (with the exception of IgG4 [30], which is unlikely to be of relevance in the context of an antiviral immune response) and a generally low background. Disadvantages include the lower responsiveness to low-affinity antibodies. In general, the

assay described here is robust in detecting SARS-CoV-2 antibodies in patients with symptoms not requiring hospital admittance. This will aid in determining the true prevalence of COVID-19. The use of this developed assay could, therefore, lead to a better understanding of the dynamics of SARS-CoV-2 infections in the population since it is assumed that a large proportion of COVID-19 patients have mild symptoms and are not hospitalized.

In prior publications, mainly in hospitalized patients, the antibody response against the NP appeared earlier than that against the S protein. [18–23] Similarly, a study in SARS-CoV-1 described that the IgG immune response is more frequently directed against the NP compared to the S protein.[31] Moreover, in a SARS-CoV-2 study, it was found that most ICU patients had a higher N-IgG than S-IgG titer compared to non-ICU hospitalized patients.[32] Other studies demonstrated or suggested an association between disease severity and level and/or longevity of the antibody response for SARS-CoV-2 and MERS-CoV.[15,33–35] Our results suggest that the antibody response against the NP of SARS-CoV-2 needs more time to develop compared to the antibody response against the RBD in patients with mild symptoms, and is overall more variable. Our finding regarding the NP may, therefore, be (partially) based on the difference in immune response based on disease severity (e.g. hospitalized and non-hospitalized). However, the discrepancy between our finding and that of previous research needs to be confirmed in a larger sample size, since other factors such as the timing of samples and difference between assay types can also influence this.

Since different samples were positive in the RBD-Ab and NP-Ab assays in our healthy donors, there is a rationale for performing both assays to eliminate false positives. This will however result in a somewhat diminished sensitivity. A similar pattern is seen for the RBD-Ab assay compared to the RBD-IgG assay. In another study, combining different antigens has also been proposed to optimize the sensitivity and specificity of a SARS-CoV-2 serological assay.[23] Two-tier testing strategies are regularly implemented for other infectious diseases such as Lyme disease or syphilis.

In a recent study describing a SARS-CoV-2 transmission model a range of transmission scenarios were examined and it was suggested that: “serological testing is required to understand the extent and duration of immunity to SARS-CoV-2 which will help determine the post-pandemic dynamics of the virus.”.[36] Determining the true extent of the total incidence of SARS-CoV-2 by serological testing will optimize these transmission

models and could aid in determining which public health measures are needed and their timing to maintain control of the SARS-CoV-2 pandemic. To assess this during periods of widespread transmission and when non-essential travel is prohibited, we developed a reliable serological assay which needs a low volume of serum and is therefore well suited to use for blood obtained by finger prick.

There are some limitations to this study. Further investigation of cross-reactivity for the different coronaviruses may be necessary since the RBD of SARS-CoV-2 may show cross-reactivity with other human coronaviruses (HCoV), and in particular SARS-CoV-1. However, we anticipate that this will not alter our findings due to the limited number of cases with SARS-CoV-1 in Europe. [37] By including a large population of healthy controls the risk of having missed substantial cross-reactivity against other HCoV is also limited; especially since antibodies against HCoV are detected in the majority of the population (>90% for all four HCoV).[38,39]

Furthermore, although this study provides an insight into the antibody response in the early phase of infection in non-hospitalized patients, the number of cases is still modest. Our study describes the early antibody kinetics in a population based on probable exposure and not based on symptoms or hospitalized patients who are RT-PCR positive. Yet, this provides an unbiased view of the performance of the developed serological assay and the antibody response in patients with mild SARS-CoV-2 infection.

In summary, this study demonstrates the use of a sensitive bridging assay to study seroprevalence in non-hospitalized COVID-19 patients, and provides insight into the early kinetics of the antibody response to SARS-CoV-2 in this population.

Author contributions

GW, TR conceived of the study, EHV, FCL, BS, BJB, GW, TR were involved in study design and organization, NILD, SK, POH, GvM, FL, JYM, WL conducted experiments, EHV, FCL, TR analyzed data, EHV, FCL, GV, GW, TR wrote the paper, TR supervised the study, all authors provided critical revision of the paper.

References

- 1 Zhu N, Zhang D, Wang W, *et al.* A Novel Coronavirus from Patients with Pneumonia in China, 2019. *N Engl J Med* 2020;**382**:727–33. doi:10.1056/NEJMoa2001017
- 2 Zhou P, Yang X-L, Wang X-G, *et al.* A pneumonia outbreak associated with a new coronavirus of probable bat origin. *Nature* 2020;**579**:270–3. doi:10.1038/s41586-020-2012-7
- 3 Li R, Pei S, Chen B, *et al.* Substantial undocumented infection facilitates the rapid dissemination of novel coronavirus (SARS-CoV-2). *Science (80-)* 2020;**368**:489 LP-493. doi:10.1126/science.abb3221
- 4 Wu JT, Leung K, Bushman M, *et al.* Estimating clinical severity of COVID-19 from the transmission dynamics in Wuhan, China. *Nat Med* 2020;**26**:506–10. doi:10.1038/s41591-020-0822-7
- 5 To KK-W, Cheng VC-C, Cai J-P, *et al.* Seroprevalence of SARS-CoV-2 in Hong Kong and in residents evacuated from Hubei province, China: a multicohort study. *The Lancet Microbe* 2020;**0**. doi:10.1016/S2666-5247(20)30053-7
- 6 Slot E, Hogema B, Reusken C, *et al.* Herd immunity is not a realistic exit strategy during a COVID-19 outbreak. 2020. doi:10.21203/rs.3.rs-25862/v1
- 7 Sood N, Simon P, Ebner P, *et al.* Seroprevalence of SARS-CoV-2–Specific Antibodies Among Adults in Los Angeles County, California, on April 10–11, 2020. *JAMA* Published Online First: 18 May 2020. doi:10.1001/jama.2020.8279
- 8 Fehr AR, Perlman S. Coronaviruses: an overview of their replication and pathogenesis. *Methods Mol Biol* 2015;**1282**:1–23. doi:10.1007/978-1-4939-2438-7_1
- 9 Rota PA, Oberste MS, Monroe SS, *et al.* Characterization of a Novel Coronavirus Associated with Severe Acute Respiratory Syndrome. *Science (80-)* 2003;**300**:1394 LP-1399. doi:10.1126/science.1085952
- 10 Berry JD, Jones S, Drebot MA, *et al.* Development and characterisation of neutralising monoclonal antibody to the SARS-coronavirus. *J Virol Methods* 2004;**120**:87–96. doi:10.1016/J.JVIROMET.2004.04.009
- 11 Traggiai E, Becker S, Subbarao K, *et al.* An efficient method to make human monoclonal antibodies from memory B cells: potent neutralization of SARS coronavirus. *Nat Med* 2004;**10**:871–5. doi:10.1038/nm1080
- 12 Sui J, Li W, Murakami A, *et al.* Potent neutralization of severe acute respiratory

368 syndrome (SARS) coronavirus by a human mAb to S1 protein that blocks receptor
369 association. *Proc Natl Acad Sci* 2004;**101**:2536–41. doi:10.1073/PNAS.0307140101

370 13 Hofmann H, Hattermann K, Marzi A, *et al.* S Protein of Severe Acute Respiratory
371 Syndrome-Associated Coronavirus Mediates Entry into Hepatoma Cell Lines and Is
372 Targeted by Neutralizing Antibodies in Infected Patients. *J Virol* 2004;**78**:6134 LP-
373 6142. doi:10.1128/JVI.78.12.6134-6142.2004

374 14 Buchholz UJ, Bukreyev A, Yang L, *et al.* Contributions of the structural proteins of
375 severe acute respiratory syndrome coronavirus to protective immunity. *Proc Natl*
376 *Acad Sci U S A* 2004;**101**:9804 LP-9809. doi:10.1073/pnas.0403492101

377 15 Okba NMA, Muller MA, Li W, *et al.* Severe Acute Respiratory Syndrome Coronavirus
378 2-Specific Antibody Responses in Coronavirus Disease 2019 Patients. *Emerg Infect Dis*
379 2020;**26**. doi:10.3201/eid2607.200841

380 16 Chen Z, Pei D, Jiang L, *et al.* Antigenicity analysis of different regions of the severe
381 acute respiratory syndrome coronavirus nucleocapsid protein. *Clin Chem*
382 2004;**50**:988–95. doi:10.1373/clinchem.2004.031096

383 17 Qiu M, Shi Y, Guo Z, *et al.* Antibody responses to individual proteins of SARS
384 coronavirus and their neutralization activities. *Microbes Infect* 2005;**7**:882–9.
385 doi:10.1016/j.micinf.2005.02.006

386 18 Tan Y-J, Goh P-Y, Fielding BC, *et al.* Profiles of antibody responses against severe
387 acute respiratory syndrome coronavirus recombinant proteins and their potential use
388 as diagnostic markers. *Clin Diagn Lab Immunol* 2004;**11**:362–71.
389 doi:10.1128/cdli.11.2.362-371.2004

390 19 Woo PCY, Lau SKP, Wong BHL, *et al.* Differential sensitivities of severe acute
391 respiratory syndrome (SARS) coronavirus spike polypeptide enzyme-linked
392 immunosorbent assay (ELISA) and SARS coronavirus nucleocapsid protein ELISA for
393 serodiagnosis of SARS coronavirus pneumonia. *J Clin Microbiol* 2005;**43**:3054–8.
394 doi:10.1128/JCM.43.7.3054-3058.2005

395 20 Zhao J, Yuan Q, Wang H, *et al.* Antibody responses to SARS-CoV-2 in patients of novel
396 coronavirus disease 2019. *Clin Infect Dis* Published Online First: March 2020.
397 doi:10.1093/cid/ciaa344

398 21 Guo L, Ren L, Yang S, *et al.* Profiling Early Humoral Response to Diagnose Novel
399 Coronavirus Disease (COVID-19). *Clin Infect Dis an Off Publ Infect Dis Soc Am*

400 Published Online First: March 2020. doi:10.1093/cid/ciaa310

401 22 Grzelak L, Temmam S, Planchais C, *et al.* SARS-CoV-2 serological analysis of COVID-19
402 hospitalized patients, pauci-symptomatic individuals and blood donors. *medRxiv*
403 2020;:2020.04.21.20068858. doi:10.1101/2020.04.21.20068858

404 23 Hachim A, Kavian N, Cohen CA, *et al.* Beyond the Spike: identification of viral targets
405 of the antibody response to SARS-CoV-2 in COVID-19 patients. *medRxiv*
406 2020;:2020.04.30.20085670. doi:10.1101/2020.04.30.20085670

407 24 Dekkers G, Treffers L, Plomp R, *et al.* Decoding the Human Immunoglobulin G-Glycan
408 Repertoire Reveals a Spectrum of Fc-Receptor- and Complement-Mediated-Effector
409 Activities. *Front Immunol* 2017;**8**:877. doi:10.3389/fimmu.2017.00877

410 25 Wölfel R, Corman VM, Guggemos W, *et al.* Virological assessment of hospitalized
411 patients with COVID-2019. *Nature* Published Online First: 2020. doi:10.1038/s41586-
412 020-2196-x

413 26 To KK-W, Tsang OT-Y, Leung W-S, *et al.* Temporal profiles of viral load in posterior
414 oropharyngeal saliva samples and serum antibody responses during infection by
415 SARS-CoV-2: an observational cohort study. *Lancet Infect Dis* Published Online First:
416 March 2020. doi:10.1016/S1473-3099(20)30196-1

417 27 Bloem K, Hernández-breijo B, Martínez-feito A, *et al.* Immunogenicity of Therapeutic
418 Antibodies: Monitoring Antidrug Antibodies in a Clinical Context. *Ther Drug Monit*
419 2017;**39**:327–32.

420 28 Gorovits B, Baltrukonis DJ, Bhattacharya I, *et al.* Immunoassay methods used in
421 clinical studies for the detection of anti-drug antibodies to adalimumab and
422 infliximab. *Clin Exp Immunol* 2018;**192**:348–65. doi:10.1111/cei.13112

423 29 Lassaunière R, Frische A, Harboe ZB, *et al.* Evaluation of nine commercial SARS-CoV-2
424 immunoassays. *medRxiv* 2020;:2020.04.09.20056325.
425 doi:10.1101/2020.04.09.20056325

426 30 Hart MH, de Vrieze H, Wouters D, *et al.* Differential effect of drug interference in
427 immunogenicity assays. *J Immunol Methods* 2011;**372**:196–203.
428 doi:<https://doi.org/10.1016/j.jim.2011.07.019>

429 31 Leung DTM, Chi Hang TF, Chun Hung M, *et al.* Antibody Response of Patients with
430 Severe Acute Respiratory Syndrome (SARS) Targets the Viral Nucleocapsid. *J Infect Dis*
431 2004;**190**:379–86. doi:10.1086/422040

- 32 Sun B, Feng Y, Mo X, *et al.* Kinetics of SARS-CoV-2 specific IgM and IgG responses in COVID-19 patients. *Emerg Microbes Infect* 2020;:1–36.
doi:10.1080/22221751.2020.1762515
- 33 Choe PG, Perera RAPM, Park WB, *et al.* MERS-CoV Antibody Responses 1 Year after Symptom Onset, South Korea, 2015. *Emerg Infect Dis* 2017;**23**:1079–84.
doi:10.3201/eid2307.170310
- 34 Alshukairi AN, Khalid I, Ahmed WA, *et al.* Antibody Response and Disease Severity in Healthcare Worker MERS Survivors. *Emerg Infect Dis* 2016;**22**.
doi:10.3201/eid2206.160010
- 35 Drosten C, Meyer B, Muller MA, *et al.* Transmission of MERS-coronavirus in household contacts. *N Engl J Med* 2014;**371**:828–35. doi:10.1056/NEJMoa1405858
- 36 Kissler SM, Tedijanto C, Goldstein E, *et al.* Projecting the transmission dynamics of SARS-CoV-2 through the postpandemic period. *Science (80-)* 2020;:eabb5793.
doi:10.1126/science.abb5793
- 37 World Health Organisation. China’s latest SARS outbreak has been contained, but biosafety concerns remain – Update 7.
https://www.who.int/csr/don/2004_05_18a/en/ (accessed 15 Apr 2020).
- 38 Gorse GJ, Patel GB, Vitale JN, *et al.* Prevalence of Antibodies to Four Human Coronaviruses Is Lower in Nasal Secretions than in Serum. *Clin Vaccine Immunol* 2010;**17**:1875 LP-1880. doi:10.1128/CVI.00278-10
- 39 Severance EG, Bossis I, Dickerson FB, *et al.* Development of a Nucleocapsid-Based Human Coronavirus Immunoassay and Estimates of Individuals Exposed to Coronavirus in a U.S. Metropolitan Population. *Clin Vaccine Immunol* 2008;**15**:1805 LP-1810. doi:10.1128/CVI.00124-08
- 40 Premkumar L, Segovia-Chumbez B, Jadi R, Martinez DR, Raut R, Markmann A, Cornaby C, Bartelt L, Weiss S, Park Y, Edwards CE, Weimer E, Scherer EM, Rouphael N, Edupuganti S, Weiskopf D, Tse LV, Hou YJ, Margolis D, Sette A, Collins MH, Schmitz J, Baric RS, de Silva AM. The receptor binding domain of the viral spike protein is an immunodominant and highly specific target of antibodies in SARS-CoV-2 patients. *Sci Immunol.* 2020 Jun 11;**5**(48):eabc8413. doi: 10.1126/sciimmunol.abc8413.
- [41] Sterlin D, Mathian A, Miyara M, Mohr A, Anna F, Claer L, Quentric P, Fadlallah J, Ghillani P, Gunn C, Hockett R, Mudumba S, Guihot A, Luyt C, Mayaux J, Beurton A,

464 Fourati S, Lacorte J,Yssel H, Parizot C, Dorgham K, Charneau P, Amoura Z, Gorochov G,
465 IgA dominates the early neutralizing antibody response to SARS-CoV-2, *medRxiv.org*,
466 2020.06.10.20126532
467

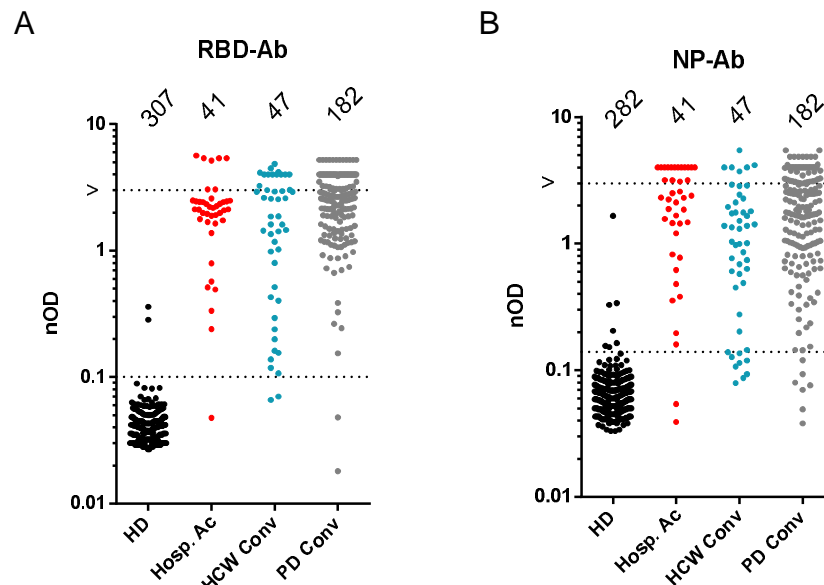


Figure 1. Total antibody titers measured in different patient populations.

Total antibody titers against the RBD (A) and NP (B) measured in different patient populations: pre-outbreak healthy donors (HD), hospitalized active-disease patients (Hosp. Ac), non-hospitalized, convalescent healthcare workers (HCW Conv) and convalescent plasmapheresis donors (PD Conv). Samples below the lower dotted line are considered negative, whereas the upper dotted line indicates upper boundary of dynamic range.

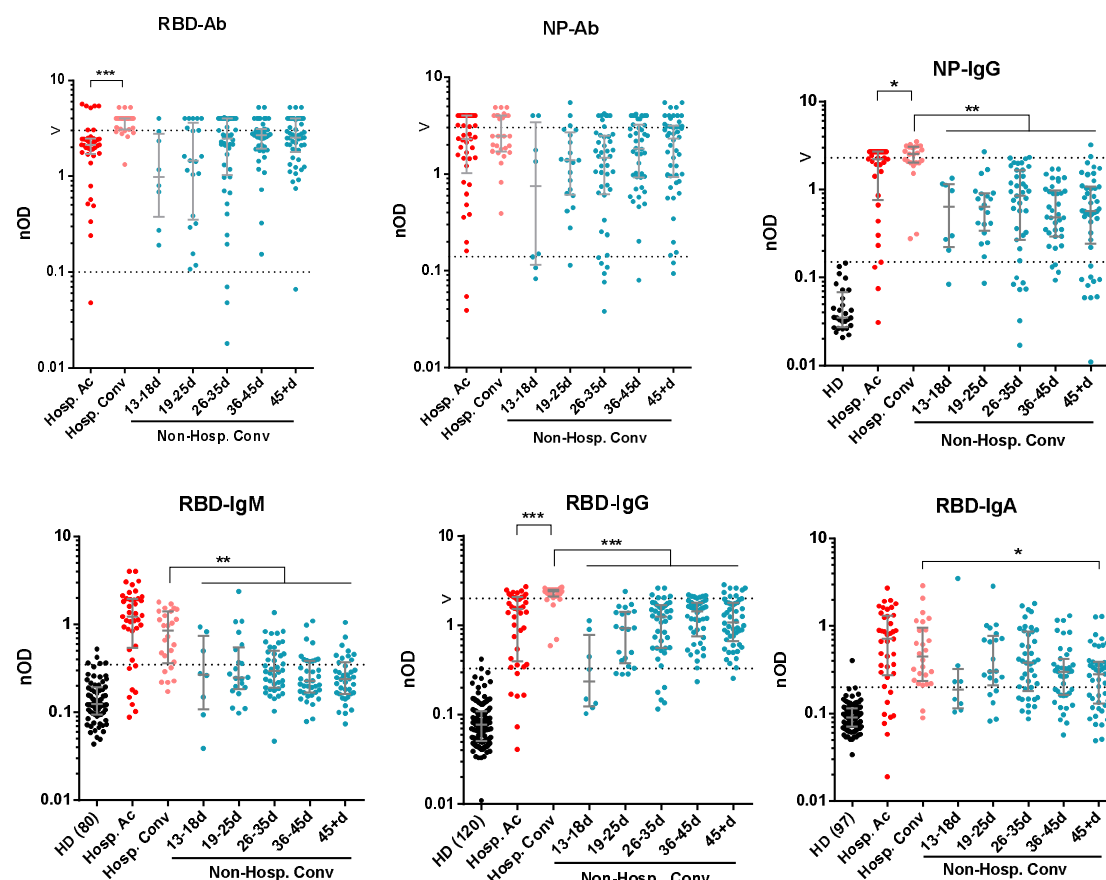


Figure 2. Antibody titers and isotypes measured in different patient populations and at various time points.

Total and isotype-specific antibody titers against the RBD and NP were measured in different patient populations: hospitalized patients with active disease (Hosp. Ac; 8 – 23 days post symptom onset; n = 41) or convalescent cases (Hosp. Conv; 20 – 66 days post symptom onset; n = 27), and non-hospitalized convalescent individuals (Non-Hosp. Conv; n = 167). For the latter group, on the x axes the number of days post symptom onset are indicated. For the isotype-specific assays, signals measured in pre-outbreak healthy donors (HD) are also indicated (for total Ab, see Figure 1). Dotted lines indicate approximate 95% (IgM) and 98% (IgG, IgA) percentile of the negative controls. * p < 0.05; ** p < 0.01; *** < 0.001. Tests performed: Hosp. Ac vs Hosp. Conv, Mann-Whitney; Hosp. Conv vs Non-Hosp. Conv, Kruskal-Wallis test/Dunn's multiple comparisons test.

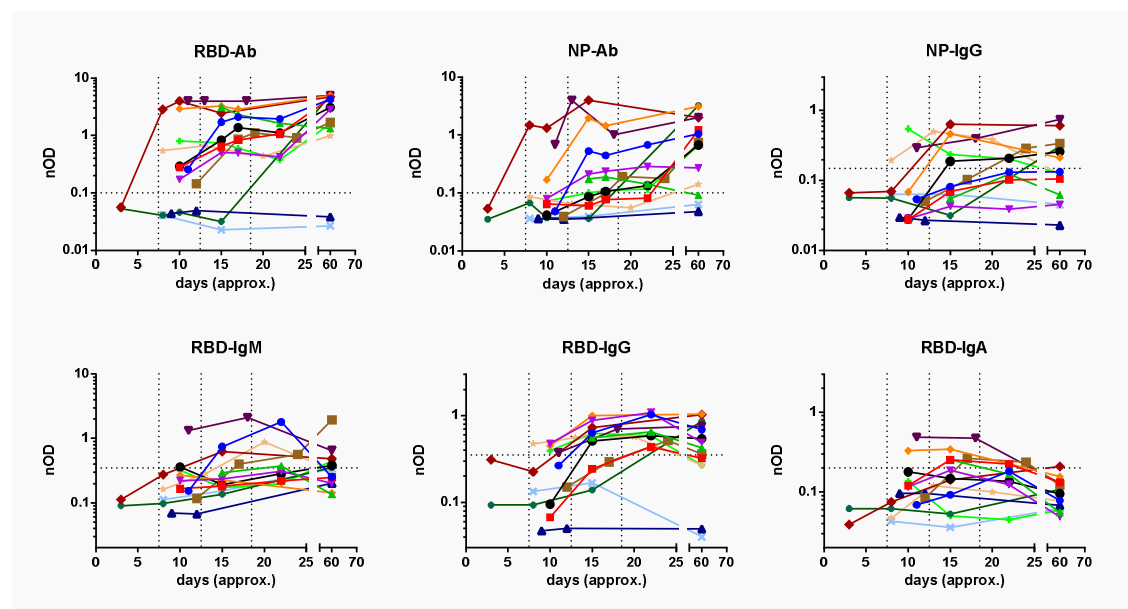


Figure 3. Kinetics of antibody response against SARS-CoV-2.

In 14 non-hospitalized patients with mild symptoms and a high likelihood (1 SARS-CoV-2 RT-PCR confirmed) of SARS-CoV-2 infection we tested the antibody response against the RBD-Ab, NP-Ab, NP-IgG, RBD-IgM, RBD-IgG and RBD-IgA. The x-axes show the number of days post symptom onset. The horizontal dotted line is the cut-off; samples below this line are considered negative. The vertical dotted lines represent from left to right 8 days, 13 days and 19 days post symptom onset.

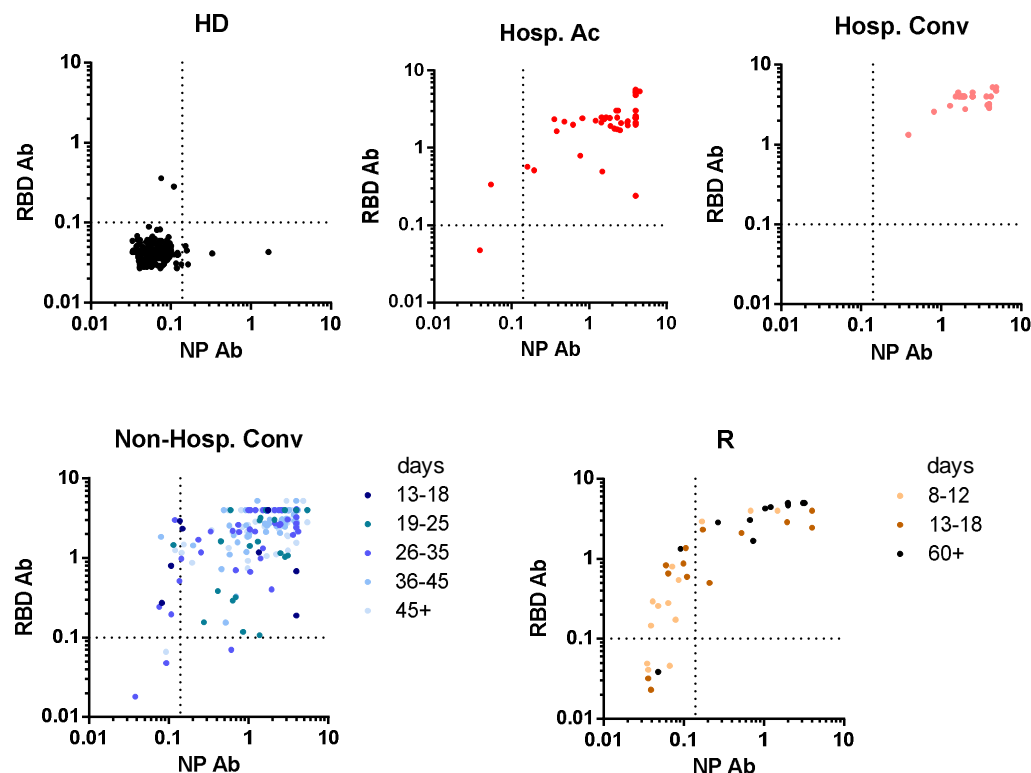


Figure 4. Anti-NP and RBD immune responses compared.

Antibodies detected with the NP-Ab and the RBD-Ab assay plotted on the x-y axes for different patients groups: pre-outbreak healthy donors (HD), hospitalized patients with active disease (Hosp. Ac) or convalescent cases (Hosp. Conv), non-hospitalized convalescent individuals (Non-Hosp. Conv, and the Reade patient cohort (R); stratified according to days post symptom onset as indicated. Dotted lines indicate the cut-off for both assays.

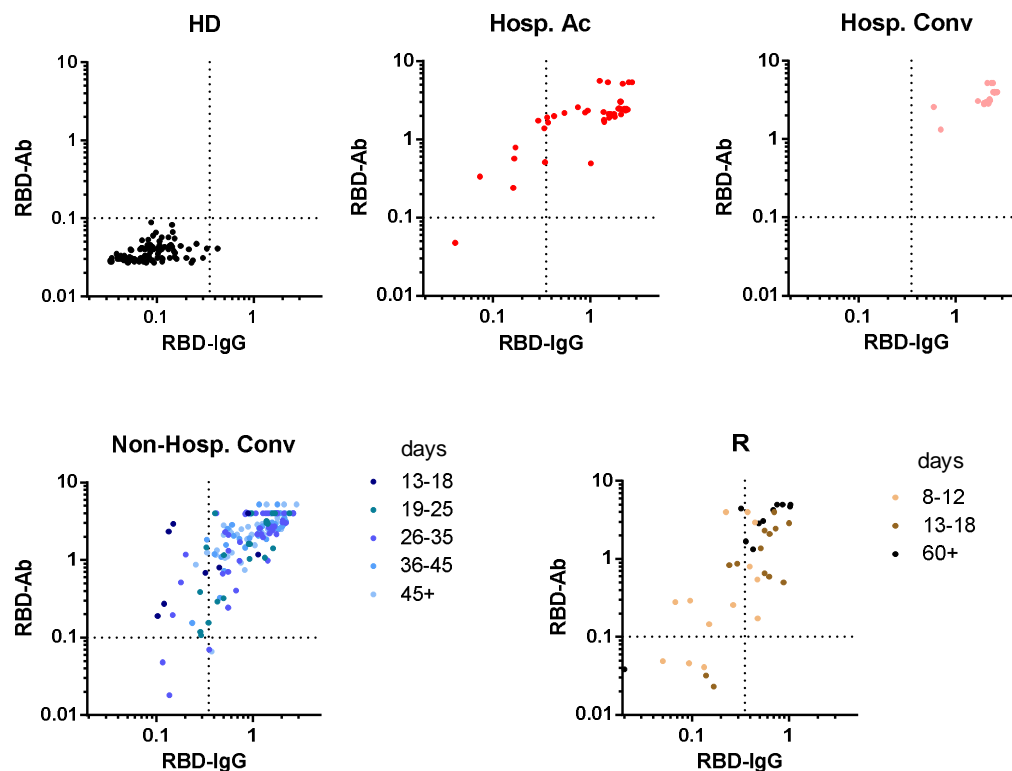


Figure 5. Comparison between the RBD-Ab and RBD-IgG assay.

Comparison of the detection of antibodies with the RBD-Ab and RBD-IgG assay plotted on the x-y axes for different patient groups; stratified according to days post symptom onset as indicated. Dotted lines indicate the cut-off for both assays.

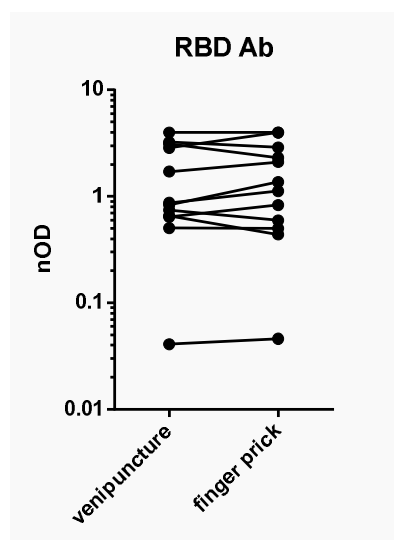


Figure 6. Comparison of venipuncture and finger prick.

For the RBD-Ab we compared the antibody titers measured in eleven serum samples obtained from a venipuncture and that obtained by finger prick.

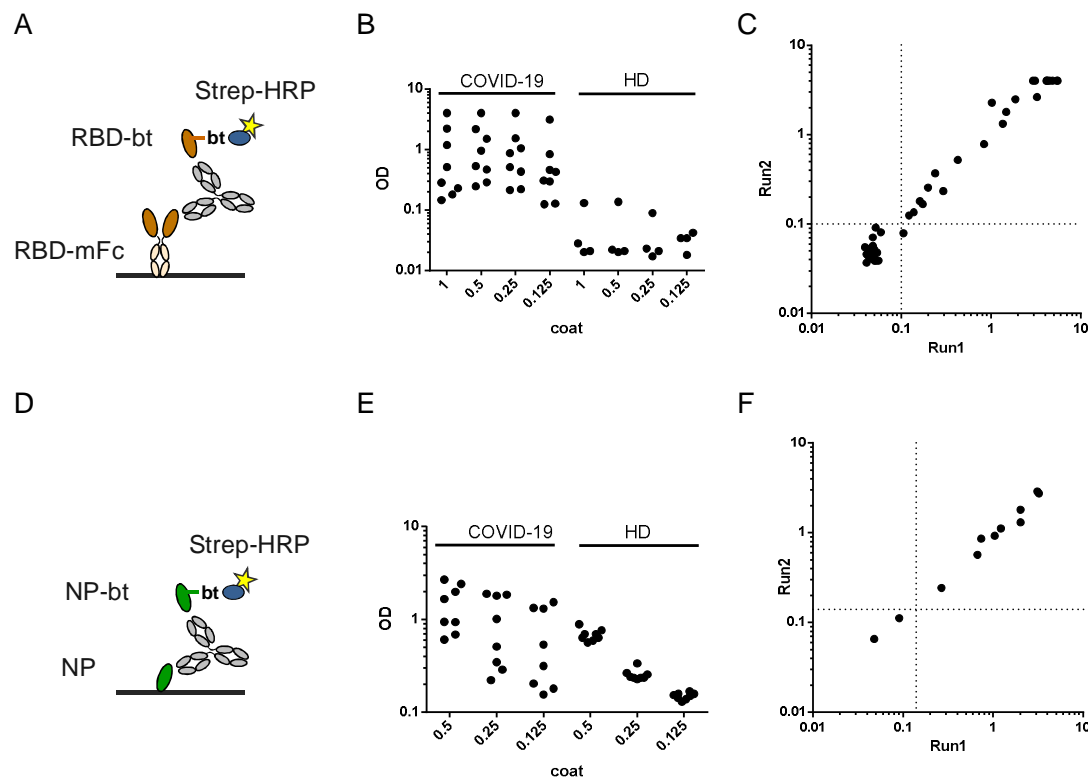


Figure S1. Setup of total antibody bridging assays for A) RBD and D) NP antigen. B,E) Impact of coating density on signals obtained from sera of selected COVID-19 patients and pre-outbreak controls for B) RBD, and E) NP. C,F) Correlation between two independent runs for C) the RBD-Ab assay, and F) the NP-Ab assay.

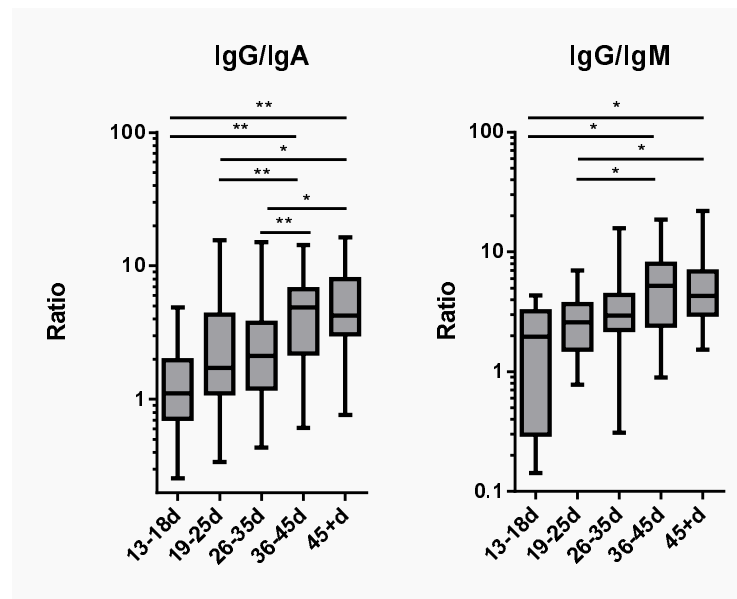


Figure S2. Gain in anti-RBD IgG over other isotypes over time in the non-hospitalized convalescent individuals. Ratio of nODs. * $p < 0.05$; ** $p < 0.01$; Kruskal-Wallis test/Dunn's multiple comparisons test.