

18 **Abstract**

19 The reliable detection of immunoglobulin G (IgG) or total antibodies directed against the novel severe
20 acute respiratory syndrome coronavirus type 2 (SARS-CoV-2) is important for clinical diagnostics and
21 epidemiological studies.

22 Here, we compare the diagnostic accuracy of six commercially available SARS-CoV-2 IgG (Abbott SARS-
23 CoV-2 IgG; Diasorin Liaison® SARS-CoV-2 S1/2 IgG; Epitope EDI™ Novel Coronavirus COVID-19 IgG ELISA
24 Kit; Euroimmun Anti-SARS-CoV-2 ELISA (IgG); Mikrogen *recomWell* SARS-CoV-2 IgG) or total SARS-CoV-2
25 antibody assays (Roche Elecsys Anti-SARS-CoV-2).

26 The test sensitivities were analyzed with a set of 34 sera obtained from 26 patients after PCR-confirmed
27 SARS-CoV-2 infection and varied from 76.9% (Euroimmun) to 96.2% (Abbott). The majority of assay results
28 were confirmed in a laboratory-developed plaque reduction neutralization test and by a SARS-CoV-2 IgG-
29 specific line assay including measurement of generally low IgG avidities (Mikrogen *recomLine* Coronavirus
30 IgG [Avidität], prototype).

31 Moreover, 100 stored sera collected during summer 2018 (N = 50) and winter season 2018/2019 (N = 50)
32 were included to demonstrate test specificities. These varied from 96.0% (DiaSorin) to 100% (Epitope
33 EDI™).

34 A subset of sera were retested with a lateral flow test (STANDARD Q COVID-19 IgM/IgG Duo) and a
35 considerably lower sensitivity was noted.

36 Overall, the diagnostic accuracy of the six SARS-CoV-2 IgG/total antibody assays was good and varied from
37 92.9% (Euroimmun) to 98.4% (Abbott). Due to the different specificities, results of commercially available
38 SARS-CoV-2 antibody tests should be interpreted with caution. A high proportion of antibody-positive
39 patient sera demonstrated neutralizing capacity against SARS-CoV-2.

40 **Introduction**

41 At the end of the year 2019, Chinese local health authorities reported the occurrence of a cluster of
42 pneumonia cases in Wuhan, a megapolis in the Hubei province [1]. Shortly after, a novel beta coronavirus
43 – which is now designated as severe acute respiratory syndrome coronavirus 2 (SARS-CoV-2) [2] - was
44 discovered in the bronchoalveolar lavage fluid of a patient with pneumonia [3,1]. This virus emerged
45 globally. As of June 15, 2020, the World Health Organization reported 7,761,609 SARS-CoV-2 infections
46 and 430,241 deaths worldwide. So far, 186,461 cases and 8791 deaths have been registered for Germany
47 (Robert Koch-Institute, data of June 15, 2020).

48 The diagnosis of acute coronavirus 2019 infection (COVID-19) needs the demonstration of SARS-CoV-2
49 ribonucleic acids in respiratory samples by real-time reverse transcription polymerase-chain reaction (real-
50 time RT-PCR). Their specificity has been reported with 100% [4].

51 More recently, the measurement of immune response against SARS-CoV-2 came into the focus of clinical
52 diagnostics, particularly by the detection of virus-specific antibodies. The use of SARS-CoV-2 antibody tests
53 could clarify the etiology of the disease in patients who present late, after two weeks from onset of
54 symptoms. Moreover, these tests can demonstrate the viral spread in the community and may even
55 identify individuals who are potentially protected from re-infection by neutralizing antibodies [4].

56 It is believed that the majority of developed antibodies is directed against the abundant viral nucleocapsid
57 protein while antibodies directed against the spike protein are considered more specific and may possess
58 neutralizing capacity [4]. The diagnostic value of serological tests, however, is limited due to their potential
59 cross-reactivity with other human coronaviruses. Furthermore, it is still unclear, how long SARS-CoV-2
60 antibodies will persist and whether they are protective at all [4].

61 In the following, we present data on the diagnostic performance of six commercially available SARS-CoV-
62 2 IgG or total SARS-CoV-2 antibody tests. Variations in their diagnostic sensitivity and specificity were
63 observed. The latter could lead to a considerable number of false positive results in countries with a
64 currently low SARS-CoV-2 prevalence such as Germany. Moreover, we demonstrate SARS-CoV-2
65 neutralizing antibodies in a marked proportion of convalescent sera.

66

67 **Material and Methods**

68 This retrospective study includes 37 serum samples obtained from 26 COVID-19 patients. Blood was drawn
69 between four and 60 days (median 19 days) after a positive real-time RT-PCR result in which parts of the
70 SARS-CoV-2 E or N genes [5] were detected in respiratory samples. Only sera from individuals that
71 exhibited a cycle threshold (CT) ≤ 35 (median CT 26.8) in the initial real-time RT-PCR were included. These
72 samples should contain SARS-CoV-2 IgG/total antibodies and, therefore, were considered to determine
73 serological assay sensitivities. Seven subjects with repeated sample entries were included in the study
74 group. Among them were two patients, each with a serum taken 0 and 9 days before the diagnosis of
75 COVID-19.

76 For calculation of assay specificities, 100 archived sera collected during summer 2018 (N = 50) and during
77 winter 2018/2019 (50) were used. In addition, two sera exhibiting a serological pattern of a recent Epstein-
78 Barr virus (EBV) infection (EBV VCA IgG and IgM positive, EBNA-1 IgG negative, Abbott GmbH, Wiesbaden,
79 Germany) were included to ensure that cross-reactivity is not occurring. None of these 102 sera were
80 expected contain SARS-CoV-2 antibodies.

81 Test results were also used to calculate the accuracy of the assays, i.e. the proportion of correctly identified
82 samples from all samples.

83 Twelve sera that were sent to us for routine SARS-CoV-2 antibody tests without a previous SARS-CoV-2
84 PCR result were also included to show test performance.

85 The Ethics committee of the Medical Faculty of the Kiel University approved the setting of this study (AZ
86 D467/20). All sera were stored at -20°C until testing.

87 The testing was done with five SARS-CoV-2 IgG assays (Abbott SARS-CoV-2 IgG; DiaSorin Liaison® SARS-
88 CoV-2 S1/2 IgG, Diasorin, Dietzenbach, Germany; Epitope EDI™ Novel Coronavirus COVID-19 IgG ELISA Kit,
89 Epitope Diagnostics, San Diego, USA; Euroimmun Anti-SARS-CoV-2 ELISA (IgG), EUROIMMUN AG, Lübeck,
90 Germany; Mikrogen *recomWell* SARS-CoV-2 IgG, Mikrogen GmbH, Neuried, Germany) as well as one total
91 SARS-CoV-2 antibody test (Roche Elecsys Anti-SARS-CoV-2, Roche Diagnostics, Mannheim, Germany). The
92 recombinant antigens of these tests cover the viral nucleocapsid protein (Abbott, Epitope, Mikrogen,
93 Roche) or the S1 domain alone (Euroimmun) or together with the S2 domain (DiaSorin) of the spike
94 protein. All tests were conducted strictly following the recommendations of the manufacturers on an
95 Architect (Abbott), a Liaison XL (DiaSorin), a Cobas e 411 (Roche) or for the assays of Epitope, Euroimmun
96 and Mikrogen on the BEP 2000 system (Siemens Healthcare GmbH, Erlangen, Germany), respectively.

97 In general, borderline results were counted as positive. In order to allow a better comparison of the test
98 results, the raw data were converted to relative indices according to the decision limits specified by the
99 manufacturer. A signal/cut-off value of <1 was valued as negative and ≥ 1 as positive, which corresponds
100 to a previous study [6].

101 A subset of sera was tested with and without avidity reagent in an IgG line assay (Mikrogen *recomLine*
102 Coronavirus IgG [Avidität], prototype, lot LCO042001). This assay is based on the nucleocapsid proteins of
103 the human coronaviruses 229E, NL63, OC43 and HKU1, which are used separately as antigen, and on the
104 nucleocapsid proteins of the "classic" SARS-CoV from 2002/2003 and SARS-CoV-2. For this, a Dynablot Plus
105 system (Mikrogen) was used. Blots were evaluated automatically with a BLOTriX reader and the *recomScan*
106 software (Mikrogen).

107 Exemplarily, 18 sera were retested in a rapid lateral flow assay that distinguishes SARS-CoV-2 IgG- and
108 IgM-antibodies (STANDARD Q COVID-19 IgM/IgG Duo, SD Biosensor, Suwon-si, Republic of Korea). The
109 manufacturer did not report the kind of epitope used in this assay.

110 Forty-seven sera were also tested under biosafety level 3 conditions in a plaque reduction neutralization
111 assay (PRNT) using an own SARS-CoV-2 isolate (M16502) and Vero cells (order no. 605372, CLS Cell Lines
112 Service GmbH, Eppelheim, Germany). The conditions were in accordance to previous reports [7,8] with
113 slight modifications. One to two days before infection, 1.0×10^5 cells were seeded per well. The 48-well
114 plates were then incubated under standard conditions until the cells became confluent. Directly prior to
115 the PRNT, patient sera were heat-inactivated at 56°C for 30 minutes and then diluted from 1:10 to 1:1280
116 in cell-culture medium consisting of DMEM (Bio&SELL GmbH, Feucht/Nürnberg, Germany) supplemented
117 with 3.7 g/l NaHCO_3 , 4.5 g/l glucose, 2mM L-glutamine, and 1% (v/v) Pen/Strep/Fungi Mix (Bio&SELL). A
118 serum dilution series was made by mixing 50 μl of each dilution step with 50 μl virus suspension containing
119 100 plaque forming units, followed by an incubation for 1 h at 37°C . The cells were washed with
120 phosphate-buffered saline (PBS, Bio&SELL GmbH), inoculated with 100 μl of these virus serum dilutions
121 and incubated for one hour at room temperature on a rocking shaker. Then, 100 μl of the cell-culture
122 medium extended by 20 % (v/v) fetal calf serum (FCS) was added to each well to achieve a FCS
123 concentration of 10 % (v/v). After fixation with 4 % (w/v) paraformaldehyde in PBS, the cells were stained
124 with aqueous solution of 1 % (w/v) crystal violet and 20 % (v/v) methanol. The stained 48-well plates were
125 photo documented. All dilution steps were tested in quadruplicates and plaque formation was compared
126 to an untreated cell-control and a virus control. A serum dilution $\geq 1:20$ that prevented the formation of
127 plaques by 50% compared to the virus control (PRNT₅₀) was considered likely to be protective.

128 **Results**

129 Thirty-seven samples taken from 26 patients with a PCR-confirmed SARS-CoV-2 infection were analyzed
130 with six SARS-CoV-2 IgG or total antibody assays. Samples #1, #7, and #9 were taken nine days before to
131 four days after PCR and were all found to be free of SARS-CoV-2 antibodies by the assays. These samples
132 were not considered for calculation of sensitivity but clearly demonstrated seroconversion (Figure 1). Out
133 of the remaining 34 samples, only one serum (#20; Figure 1) which was obtained ten days after a positive
134 RT-PCR was tested negative for SARS-CoV-2 IgG/total antibodies in the six assays. However, this sample
135 exhibited a PRNT₅₀ 1:10 to 1:20. All other samples were reactive in at least one assay (Figure 1). With
136 respect to the sample size, assay sensitivities ranged from 76.9% (Euroimmun, 26 individuals after
137 diagnosis of COVID-19) to 97.1% (Abbott, 34 sera including follow-up entries) (Table 1). When three
138 samples (#32, #33, #34; Figure 1), that all exhibited isolated reactivities in the Abbott assay but did not
139 reveal SARS-CoV-2 neutralizing capacities in the PRNT₅₀, were excluded from the data set, sensitivities
140 varied from 87.1% to 96.8%. Twenty of the other 24 COVID-19 patients developed virus neutralizing
141 antibodies as shown by a PRNT₅₀ ≥1:20 (including two samples with a PRNT₅₀ 1:10 to 1:20). A comparison
142 of S/CO values of follow-up samples #2 to #6, #26 to #27, #28 to #29, and #32 to #33 showed no clear
143 trend towards higher values while an increase in PRNT₅₀ titer was evident in the first patient (#1 to #6)
144 (Figure 1, Supplementary material).

145 Specificity was calculated using 100 archived samples that should not contain SARS-CoV-2 antibodies.
146 Overall, ten sera were found to be reactive in the six assays, and four of them were found to be reactive
147 in one assay. None contained SARS-CoV-2 neutralizing antibodies (Figure 2, Supplementary material).
148 Thus, assay specificities ranged from 96.0% to 100.0% (Table 1). Two samples with a typical constellation
149 of an acute EBV infection did not show cross reactivity with any of the SARS-CoV-2 IgG/total antibody
150 assays (data not shown).

151 Taken together, assay accuracies varied from 92.5% to 98.5% (Table 1).

152 Twelve routine samples obtained from individuals who were interested in their SARS-CoV-2 antibody
153 status were re-evaluated by all six assays (Figure 3). Six of them – including three family members of a
154 confirmed COVID-19 case (#22; Figure 1) - were classified SARS-CoV-2 IgG/total antibody positive by the
155 majority of the tests. Isolated reactivity was observed in two sera (#2, #10; Figure 3).

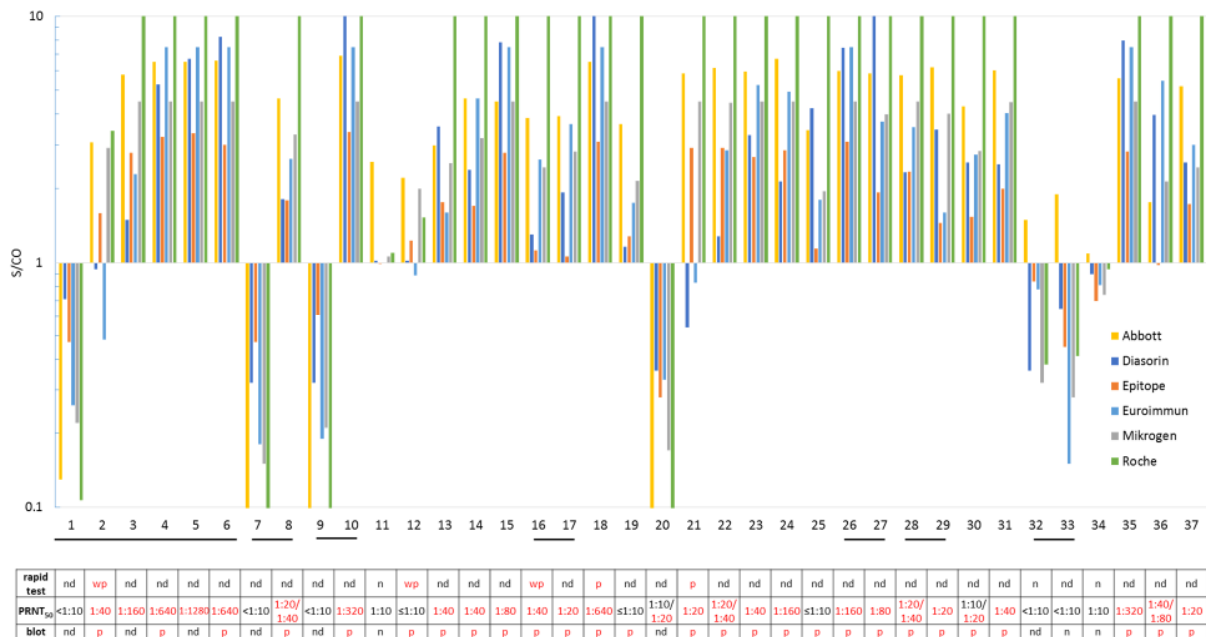
156 Thirty of the 37 sera obtained from COVID-19 cases were retested in the IgG *recom*Line assay. Among
157 them, 27 (90%) were confirmed as SARS-CoV-2 IgG positive (Figure 1, Supplementary material). One out
158 of the ten archived sera that were reactive in at least one of the six SARS-CoV-2 IgG/total antibody tests

159 was also classified as SARS-CoV-2 IgG positive by the blot results. The underlying sample was collected in
160 winter 2018/2019 and was found to be reactive for SARS-CoV-2 IgG/total antibodies by the Mikrogen
161 (S/SCO 1.33) and Roche (S/SCO 3.46) assays in parallel (Figure 2). As well, nine of the twelve pretested
162 routine samples were analyzed by the blot and pre-known results were largely confirmed (Figure 3,
163 Supplementary material). All measured SARS-CoV-2 IgGs were of low avidity (Supplementary material).

164 Eighteen samples, including eight sera from confirmed COVID-19 cases were retested in a lateral flow
165 assay. Of the eight COVID-19 sera, two were clearly positive for IgG, while three were tested weakly
166 positive and three negative (Figure 1, Supplementary). Five archived samples that were valued reactive in
167 at least one of the six SARS-CoV-2 IgG/total antibody tests were also re-evaluated by this lateral flow assay.
168 All of them had negative IgG results (Figure 2, Supplementary material). In addition, five routine samples
169 were retested by the rapid antibody assay, and three were found to be weakly IgG positive (Figure 3,
170 Supplementary material). There was no evidence of the presence of SARS-CoV-2 IgM in the 18 samples
171 (Supplementary material).

172

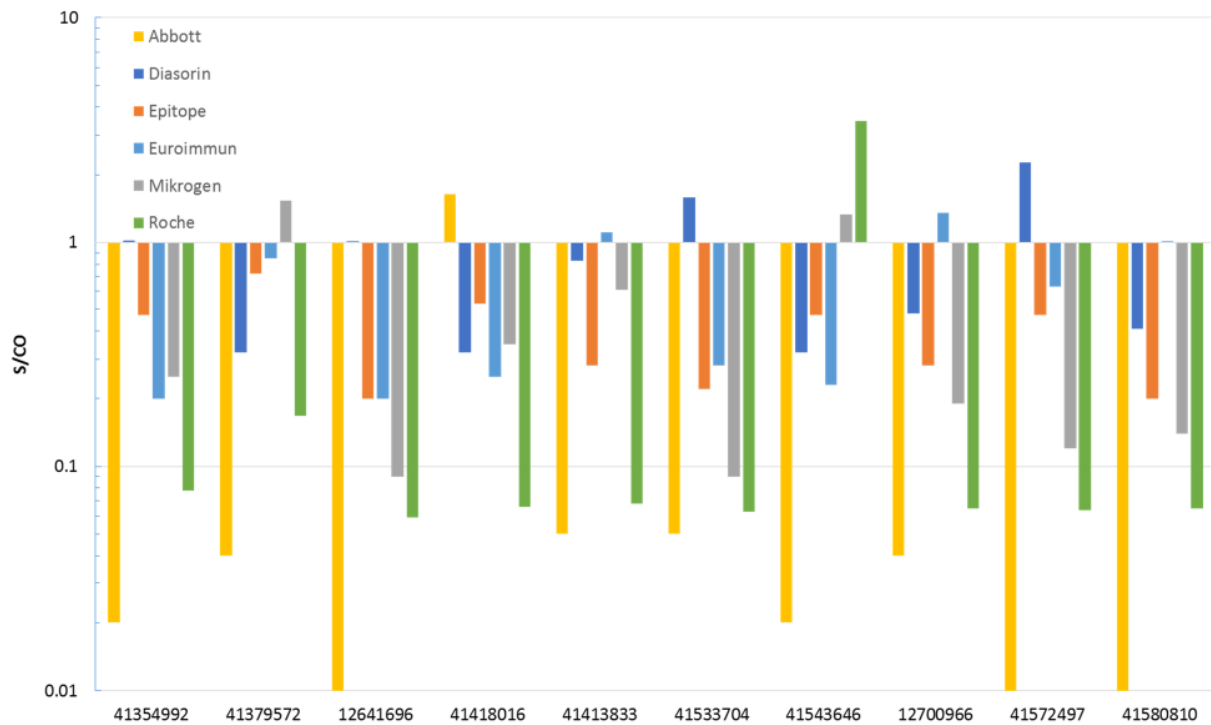
173 **Figure 1**



174

175 **Figure 1: Detection of SARS-CoV-2 IgG/total antibodies in confirmed COVID-19 cases.** Serum samples (N
 176 = 37) obtained from 26 COVID-19 patients were tested. A signal/cut-off value ≥ 1 is considered as positive
 177 for SARS-CoV-2 IgG/total antibodies. The sera marked by underlined numbers are follow-up samples from
 178 seven patients, and three among them demonstrate seroconversion. Sample #1 was taken four days and
 179 sample #2 sixth days after the PCR. The last serum (#6) of this patient was obtained 26 days after PCR.
 180 Sample #7 was taken nine days before PCR and the corresponding sample #8 19 days after the PCR. Serum
 181 #9 was taken on the day of the PCR and serum #10 29 days thereafter. Results of the rapid lateral flow
 182 test, the plaque reduction neutralization assay (PRNT₅₀) and the line assay (blot) are shown in the table. P,
 183 positive; wp, weakly positive; n, negative; nd, not determined.

184 **Figure 2:**

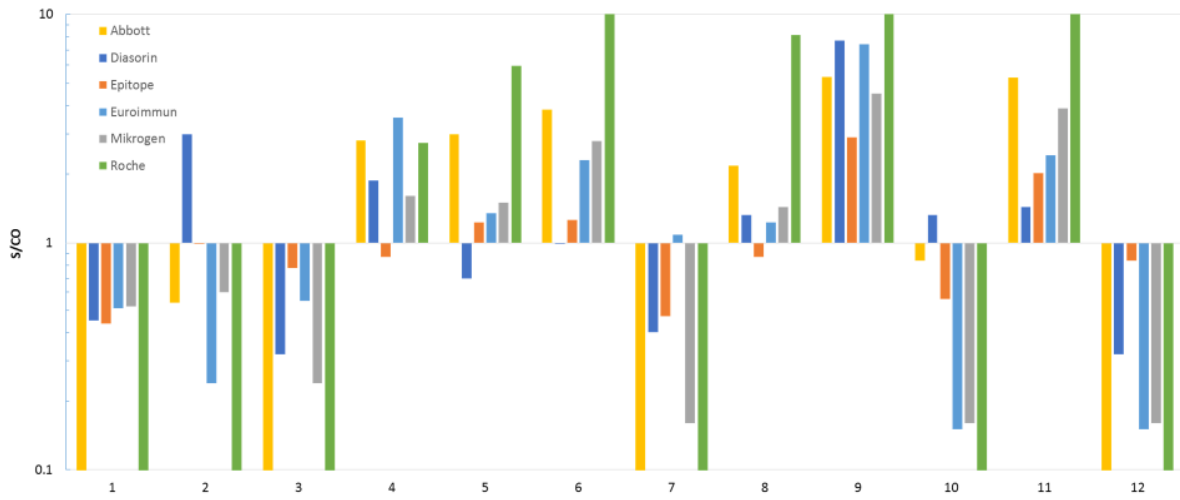


rapid test	nd	n	nd	n	nd	n	n	nd	n	nd
PRNT ₅₀	<1:10	<1:10	<1:10	<1:10	<1:10	<1:10	<1:10	<1:10	<1:10	<1:10
blot	n	n	n	n	n	n	p	n	n	n

185
 186 **Figure 2: False positivity of SARS-CoV-2 IgG/total antibody tests in ten out of 100 archived sera collected**
 187 **in summer 2018 and winter 2018/2019.** A signal/cut-off value ≥ 1 is considered as positive for SARS-CoV-
 188 2 IgG/total antibodies. Results of the rapid lateral flow test, the plaque reduction neutralization assay
 189 (PRNT₅₀) and the line assay (blot) are shown in the table. P, positive; n, negative; nd, not determined.

190

191 **Figure 3**



rapid test	n	n	nd	wp	wp	wp	nd	nd	nd	nd	nd	nd
blot	nd	n	nd	p	p	p	n	n	p	n	p	nd

192
 193 **Figure 3: Detection of SARS-CoV-2 IgG/total antibodies in twelve routine samples.** A signal/cut-off value
 194 ≥ 1 is considered as positive for SARS-CoV-2 IgG/total antibodies. The underlined samples #4 to #6 were
 195 obtained from family members of a COVID-19 case (sample #22 in Figure 1). Results of the rapid lateral
 196 flow test and the line assay (blot) are shown in the table. P, positive; wp, weakly positive; n, negative; nd,
 197 not determined.

198

199 **Table 1: Diagnostic performance of six commercial SARS-CoV-2 IgG and total antibody assays**

	sensitivity in %			specificity in %	accuracy in %		
	<i>number of samples</i>						
	34	31*	26 [#]	100	134	131*	126 [#]
<i>Assay</i>							
Abbott	97.1	96.8	96.2	99.0	98.5	98.5	98.4
Diasorin	82.4	90.3	80.8	96.0	92.5	94.7	92.9
Epitope	82.4	90.3	80.8	100.0	95.5	97.7	96.0
Euroimmun	79.4	87.1	76.9	97.0	92.5	94.7	92.9
Mikrogen	88.2	96.8	88.5	98.0	95.5	97.7	96.0
Roche	88.2	96.8	88.5	99.0	96.3	98.5	96.8
*Three sera obtained from COVID-19 cases that showed isolated reactivity in the Abbott assay were excluded in this setting.							
[#] Sera from 26 individuals after PCR-confirmed SARS-CoV-2 infection. Follow-up sera were excluded.							

200

201

202 Discussion

203 In a rather short period, various assays for detection of SARS-CoV-2 antibodies were introduced to the
204 market. A meta-analysis of 38 studies on the performance of different format SARS-CoV-2 antibody tests
205 mainly manufactured from Chinese companies was reported recently [9]. Furthermore, studies on the
206 sensitivity and specificity of SARS-CoV-2 IgG tests, including the ELISAs from Epitope, Euroimmun, and
207 Mikrogen, were published previously [6,10,8,7]. Here, we compare six different commercially available
208 tests, all of which have been released within the past few months. Three of them (Abbott, DiaSorin, Roche)
209 were applied in a random access manner which reduces the needed hands-on-time markedly. A subset of
210 samples were retested in a laboratory-developed PRNT₅₀, in an immunoblot including the determination
211 of SARS-CoV-2 IgG avidities and in a rapid lateral flow assay. To our knowledge, such a comprehensive
212 study has not yet been carried out.

213 The sensitivities between the six tests differ from 76.9% to 97.1% (Table 1), which is in accordance to other
214 studies [6,8,10] and to the meta-analysis [9]. Our data indicate that assays based on the more abundant
215 viral nucleocapsid protein as an epitope are slightly more sensitive compared to tests using domains of
216 the spike protein as an antigen. Furthermore, a lack of reactivity in the latter IgG tests does not necessarily
217 mean that SARS-CoV-2 neutralizing antibodies are missing (compare Figure 1). However, three sera from
218 two COVID-19 patients, which were only recognized as IgG positive in the Abbott test, could not be
219 confirmed in the blot and in the PRNT₅₀. In addition, four other COVID-19 patients did not develop a PRNT₅₀
220 $\geq 1:20$ (Figure 1). Thus, 76.9% (20/26) of COVID-19 patients developed SARS-CoV-2 neutralizing antibodies
221 as demonstrated by a PRNT₅₀ $\geq 1:20$ (including two patients with a PRNT₅₀ of 1:10 to 1:20). The absence of
222 measurable neutralizing antibodies in several COVID-19 patients was reported recently [11]. The
223 evaluability of the simple PRNT₅₀ technique used in our study may be further improved by overlaying the
224 cells with cellulose or by using specific antibodies to detect remaining viral antigens in the cells, as shown
225 previously [7].

226 The specificities of SARS-CoV-2 IgG/total antibody tests are at a comparatively high level between 96.0
227 and 100.0%, as has also been reported by others [6,8,10]. Interestingly, one sample collected in winter
228 2018/2019 was found to be reactive in the Mikrogen and Roche assays as well as in the blot but could not
229 be confirmed by the PRNT₅₀ (Figure 2, Supplementary material). For all other 99 archived samples, a
230 random pattern of rare, isolated reactivity was demonstrated and none was confirmed as possessing SARS-
231 CoV-2 neutralizing antibodies by PRNT₅₀ (Figure 2, Supplementary material). In addition, two sera obtained
232 from patients with acute EBV infection were tested negative for SARS-CoV-2 IgG/total antibodies. Thus,

233 cross-reactivity to epitopes of endemic human coronaviruses or triggered by active EBV infection may not
234 represent a major problem. Nevertheless, it should be noted that due to the currently estimated low
235 prevalence of SARS-CoV-2 antibodies in the overall German population, even a rather high specificity of
236 99% would produce a relevant number of false positive results. Thus, these assays - that all show a
237 comparable high accuracy of 92.5%-98.5% (Table 1) - should be preferentially used for testing of patients
238 with a history of a probable infection. In case of doubt, the implementation of the labor-intensive and
239 time-consuming PRNT₅₀ should be considered.

240 The majority of SARS-CoV-2 IgGs in sera from COVID-19 patients were confirmed by an immunoblot but
241 were shown to possess a low avidity (Supplementary material). This result may come from the short
242 observation period. The last sample was obtained 60 days after COVID-19 diagnosis but the median of
243 sample collection dates was only 19 days after PCR. Furthermore, seroconversion in three SARS-CoV-2
244 patients was demonstrated. So far, it is not clear when SARS-CoV-2 IgGs of high avidity will appear and
245 how long such SARS-CoV-2 specific antibodies will persist at all. A marked proportion of COVID-19 patients,
246 however, developed neutralizing antibodies in their sera, which might be protective and prevent a re-
247 infection.

248 Lateral flow assays for the detection of SARS-CoV-2 antibodies are becoming increasingly important as
249 they can be used by less experienced persons under point-of-care conditions and should lead to reliable
250 results in a relatively short time [8]. Here, 18 sera were retested with a rapid antibody test. Only two
251 convalescence sera obtained from COVID-19 patients were clearly identified as IgG positive by this assay.
252 In addition, only very weak bands were visible in three of these well-characterized samples, while three
253 further convalescent sera were rated negative (Supplementary material). A similar situation with hardly
254 visible IgG bands was observed in three routine samples obtained from family members of a confirmed
255 SARS-CoV-2 case (Supplementary material). In contrast, five archived samples that were classified reactive
256 for SARS-CoV-2 IgG/total antibodies by at least one of the six assays were all negative by this lateral flow
257 assay. Thus, this rapid antibody test is believed to have a good specificity but sensitivity is reduced.
258 Particularly the occurrence of faint IgG bands is a diagnostic challenge. The interpretation of results
259 obtained from this assay should be done with caution.

260 Taken together, all six tested SARS-CoV-2 IgG/total antibody assays demonstrate a good performance.
261 Their slightly reduced specificities, however, may produce a relevant number of false positive results in
262 low prevalence countries. Future studies should address the long-term course of SARS-CoV-2 antibodies
263 as well as the virus-specific cellular immune response. For the latter, the development of routine test

264 procedures is urgently required. The PRNT results indicate that a high proportion of antibody-positive sera
265 are actually able to neutralize the virus in culture and, thus, may be relevant for immunity.

266 **Acknowledgments**

267 The authors deeply acknowledge the excellent technical assistance of Sina Müller (Labor Dr. Krause und
268 Kollegen MVZ GmbH) and Andrea Hölzgen (Institut für Infektionsmedizin). Furthermore, we would like to
269 thank all patients for participating in this study.

270 **Author's contributions**

271 AK conceived the study and supervised all experiments. AS and OG prepared samples. AS performed
272 testing of all sera in the commercially available assays with help of OG. RR performed the PRNT with
273 support by AK and HF. AK, AS, OG and RR prepared the manuscript with help of HF and TL. Results are part
274 of the MD thesis of AS.

275 **Declaration of Interest**

276 All authors declare no conflict of interest.

277 References

- 278 1. Zhu N, Zhang D, Wang W, Li X, Yang B, Song J, Zhao X, Huang B, Shi W, Lu R, Niu P, Zhan F, Ma X, Wang
279 D, Xu W, Wu G, Gao GF, Tan W, China Novel Coronavirus I, Research T (2020) A Novel Coronavirus from
280 Patients with Pneumonia in China, 2019. *N Engl J Med* 382 (8):727-733. doi:10.1056/NEJMoa2001017
281 2. Coronaviridae Study Group of the International Committee on Taxonomy of V (2020) The species Severe
282 acute respiratory syndrome-related coronavirus: classifying 2019-nCoV and naming it SARS-CoV-2. *Nat*
283 *Microbiol* 5 (4):536-544. doi:10.1038/s41564-020-0695-z
284 3. Tan W, Zhao X, Xuejun M, Wenling W, Peihua N, Wenbo X, Gao GF, Guizhen W (2020) A novel
285 coronavirus genome identified in a cluster of pneumonia cases - Wuhan, China 2019 - 2020. *China CDC*
286 *Weekly* 2:61-62
287 4. Sethuraman N, Jeremiah SS, Ryo A (2020) Interpreting Diagnostic Tests for SARS-CoV-2. *JAMA*.
288 doi:10.1001/jama.2020.8259
289 5. Corman VM, Landt O, Kaiser M, Molenkamp R, Meijer A, Chu DK, Bleicker T, Brunink S, Schneider J,
290 Schmidt ML, Mulders DG, Haagmans BL, van der Veer B, van den Brink S, Wijsman L, Goderski G, Romette
291 JL, Ellis J, Zambon M, Peiris M, Goossens H, Reusken C, Koopmans MP, Drosten C (2020) Detection of 2019
292 novel coronavirus (2019-nCoV) by real-time RT-PCR. *Euro Surveill* 25 (3). doi:10.2807/1560-
293 7917.ES.2020.25.3.2000045
294 6. Kruttgen A, Cornelissen CG, Dreher M, Hornef M, Imohl M, Kleines M (2020) Comparison of four new
295 commercial serologic assays for determination of SARS-CoV-2 IgG. *J Clin Virol* 128:104394.
296 doi:10.1016/j.jcv.2020.104394
297 7. Okba NMA, Muller MA, Li W, Wang C, GeurtsvanKessel CH, Corman VM, Lamers MM, Sikkema RS, de
298 Bruin E, Chandler FD, Yazdanpanah Y, Le Hingrat Q, Descamps D, Houhou-Fidouh N, Reusken C, Bosch BJ,
299 Drosten C, Koopmans MPG, Haagmans BL (2020) Severe Acute Respiratory Syndrome Coronavirus 2-
300 Specific Antibody Responses in Coronavirus Disease 2019 Patients. *Emerg Infect Dis* 26 (7).
301 doi:10.3201/eid2607.200841
302 8. Kohmer N, Westhaus S, Rühl C, Ciesek S, Rabenau HF (2020) Clinical performance of SARS-CoV-2 IgG
303 antibody tests and potential protective immunity. *bioRxiv*
304 9. Kontou PI, Braliou GG, Dimou NL, Nikolopoulos G, Bagos PG (2020) Antibody Tests in Detecting SARS-
305 CoV-2 Infection: A Meta-Analysis. *Diagnostics (Basel)* 10 (5). doi:10.3390/diagnostics10050319
306 10. Lassaunière R, Frische A, Harboe ZB, Nielsen AC, Fomsgaard A, Krogfelt KA, Jørgensen CS (2020)
307 Evaluation of nine commercial SARS-CoV-2 immunoassays. *medRxiv*
308 11. Wu F, Wang A, Liu M, Wang Q, Chen J, Xia S, Ling Y, Zhang Y, Xun J, Lu L, Jiang S, Lu H, Wen Y, Huang J
309 (2020) Neutralizing antibody responses to SARS-CoV-2 in a COVID-19 recovered patient cohort and their
310 implications. *medRxiv*

311