

1 **Humoral immune response and prolonged PCR positivity in a cohort of 1343**

2 **SARS-CoV 2 patients in the New York City region**

3 **Authors:** Ania Wajnberg MD, Mayce Mansour, MD, Emily Leven, MD, Nicole M. Bouvier,
4 MD, Gopi Patel, MD, Adolfo Firpo, MD, Rao Mendu, PhD, Jeffrey Jhang, MD, Suzanne
5 Arinsburg, DO, Melissa Gitman, MD MPH, Jane Houldsworth, PhD, Ian Baine, MD PhD,
6 Viviana Simon, MD PhD, Judith Aberg, MD, Florian Krammer, PhD, David Reich, MD, Carlos
7 Cordon-Cardo, MD, PhD

8
9 **Author affiliations:** Icahn School of Medicine at Mount Sinai, New York NY

10

11

12 **Abstract**

13 *Background:* Severe acute respiratory syndrome coronavirus 2 (SARS-CoV-2) has caused a
14 global pandemic. The percentage of infected individuals who seroconvert is still an open
15 question. In addition, it has been shown in some individuals that viral genome can still be
16 detected at considerable time post symptom resolution. Here we investigated both
17 seroconversion and PCR-positivity in a large cohort of convalescent serum donors in New York
18 City.

19 *Methods:* Individuals with confirmed or suspected SARS-CoV-2 infection were screened via
20 PCR for presence of viral genome and via enzyme-linked immunosorbent assay for presence of
21 anti SARS-CoV-2 spike antibodies.

22 *Results:* All but three confirmed SARS-CoV-2 patients seroconverted to the SARS-CoV-2 spike
23 while only 37.4% of suspected SARS-CoV-2 patients seroconverted. PCR-positivity was
24 detected up to 28 days from symptom resolution.

25 *Conclusions:* Here we show that the vast majority of confirmed COVID19 patients seroconvert,
26 potentially providing immunity to reinfection. We also report that in a large proportion of
27 individuals, viral genome can be detected via PCR in the upper respiratory tract for weeks post
28 symptom resolution, but it is unclear if this signal represents infectious virus.

29

30

31

32 **Introduction**

33 Severe acute respiratory syndrome coronavirus 2 (SARS-CoV-2) has rapidly spread around the
34 world, leading to unprecedented strain on health care systems and economies, causing over
35 290,000 infections and 17,000 deaths in New York State (source, New York State, Department
36 of Health as of April 28th 2020) at the time of writing this report. Significant disruptions to daily
37 life have been enacted in order to flatten the epidemic curve. In order to avoid spread of SARS-
38 CoV-2 and to help standardize definitions of clearance, it is important to understand the duration
39 of SARS-CoV-2 nucleic acids within the nasopharynx and the time course to the mounting of an
40 antibody response to this new viral pathogen.

41 Current US Centers for Disease Control and Prevention (CDC) guidelines suggest that people
42 with confirmed or suspected SARS-CoV-2 infection should remain in isolation for at least seven
43 days from symptom onset and return to work if they have been asymptomatic for 72 hours.
44 However, to date, there are limited data that help to define the time to viral clearance from illness
45 onset and cessation of symptoms. A prior case study suggested that SARS-CoV-2 can exhibit

46 ongoing viral shedding for a median of 2.5 days (range 1-8 days) after complete symptom
47 resolution, but it remains unclear whether this viral shedding poses a risk for forward
48 transmission.¹ A small case sample of four recently hospitalized patients found that they were
49 SARS-CoV-2 positive on repeat polymerase chain reaction (PCR) testing five to 13 days after
50 discharge.² Other studies have found viral shedding for up to six weeks after symptoms.³ From
51 work with the 2003 SARS-CoV-1 it is not clear if detection of viral genome of this duration
52 indicates prolonged infectivity or presence of nonviable virus.⁴ A clearer understanding of
53 duration of viral shedding is critical to preventing transmission by infected individuals,
54 particularly as they begin to feel well enough to resume normal activities. Understanding time to
55 PCR clearance may also help guide isolation durations and return to work clearance, as well as
56 clarify the utility of negative PCR testing as part of defining disease clearance.

57 There is limited data worldwide on the development of antibodies to SARS-CoV-2, particularly
58 the formation of IgG. While there is concern regarding efficacy of antibody testing for diagnosis
59 of SARS-CoV-2, little is known about long lasting immunity. One study measured neutralizing
60 antibodies in 175 hospitalized patients and found that 64% had high antibody titers, 30% had
61 weak antibody response, and 6% had undetectable titers.⁵ Studying the plasma from previously
62 infected individuals may further our understanding of the timing and strength of different
63 populations' antibody response to this novel illness, delineate duration of antibody presence, and
64 identify cases of possible reinfection. Additionally, individuals with high antibody titers may
65 become donors for convalescent plasma treatment for critically ill patients as part of ongoing
66 studies of this therapeutic option.⁶⁻⁸

67 Here we present a large data set of serum antibody testing in persons who have fully recovered
68 after mild illness from SARS-CoV-2 at Mount Sinai Hospital. Our aim is to describe the time to

69 SARS-CoV-2 PCR clearance from the nasopharynx, the rates of IgG development, and time to
70 serum IgG development from onset and resolution of symptoms in 1,343 participants with prior
71 confirmed or suspected SARS-CoV-2 infection.

72

73 **Methods**

74 We conducted an outreach program in the New York City area, including parts of New York
75 State, Connecticut, and New Jersey, to identify people recovered from SARS-CoV-2 for
76 nasopharyngeal PCR (cobas[®] SARS-CoV-2, Roche Diagnostics, Indiana) and serum IgG titer
77 measurement (ELISA Mount Sinai).^{9,10} Participants were tested between March 26 and April 10,
78 2020. We recruited participants via REDCap[®] (Vanderbilt University, Tennessee) online survey
79 response which was advertised on our hospital website, and subsequently shared by multiple
80 news organizations and public officials in New York. REDCap respondents were deemed
81 eligible if they had previously tested positive for SARS-CoV-2, or if they were symptomatic
82 with suspected SARS-CoV-2 and lived with someone with a positive SARS-CoV-2 PCR test,
83 had been told by a physician that they had symptoms consistent with SARS-CoV-2, or were
84 healthcare workers. We only included participants who self-reported suspicious symptoms after
85 February 1st 2020, as this is when it is believed SARS-CoV-2 began to spread in New York
86 City. Additionally, only participants who were asymptomatic at time of survey were
87 outreached. Respondents self-reported date of symptom onset, date of positive SARS-CoV-2
88 test (if applicable), and last date of symptoms. Duration of symptoms was calculated from these
89 self-reported dates.

90 During the first two weeks of the survey, we tested for SARS-CoV-2 in the nasopharynx by PCR
91 as well as IgG antibody (Ab) in the serum of every individual while in the third week the testing
92 was limited to SARS-CoV-2 antibodies only. The rationale for this change was that we had a far
93 larger testing volume combined with the fact that many of the participants reported symptom
94 resolution >14 days prior to testing. During week one, participants were brought in ten days after
95 they had a confirmed/suspected diagnosis and had been asymptomatic for at least three days. In
96 week 2, as we identified more potential donors and learned more about our antibody assay, we
97 extended our timeline to 14 days after symptoms onset, with at least three days asymptomatic. In
98 week 3, we included participants 21 days or more after symptom onset, who had been
99 completely asymptomatic for at least 14 days.

100 SARS-CoV-2 PCR was considered positive if detected on nasopharyngeal swab. We measured
101 serum IgG antibody titers using a serologic enzyme-linked immunosorbent assay (ELISA)
102 developed at Icahn School of Medicine at Mount Sinai and described on March 18, 2020; this
103 serum test has a sensitivity of 92% and a specificity >99%. Serum IgG titers were considered
104 “strongly positive” if they were detected at titers of 1:320 or higher (highest dilutions were
105 1:320, 1:960, 1:2880), and considered “weakly positive” if detected at titers of 1:80 and 1:160.
106 Negative was defined as titers below 1:80 (and is shown in figures as 1:40). All interested
107 participants with antibody titers >1:320 and negative SARS-CoV-2 PCR swabs were screened by
108 the New York Blood Center using standard criteria for plasma donation and included as donors
109 in our convalescent plasma study if eligible as per CFR Title 21. Participants with weakly
110 positive antibody titers were invited to return for repeat serum titer testing at least seven days
111 after their initial antibody test. Participants with positive PCR swabs and antibodies were asked
112 to return for PCR testing at least three days after initial PCR test so they could be referred for

113 plasma donation once the virus had fully cleared. Given the frequent serial detection of SARS-
114 CoV-2 by nasopharyngeal PCR using three-day increments, on April 3rd, 2020, we began to ask
115 participants to return at least ten days after the last positive PCR for re-testing.

116 One-way ANOVA and Fisher's exact test were used to measure the association of age, gender,
117 symptom duration, and days from symptom onset and resolution with positive antibody results.

118 This study was reviewed and approved by our institutional review board.

119 **Results**

120 We measured SARS-CoV-2 antibody titers in 1,343 people over the first three weeks of the
121 survey (March 26, 2020 to April 10, 2020) using a now FDA approved two step ELISA.^{9,10} The
122 average age of the participants was 40 years (range 17 to 76 years) with 256 (19%) between the
123 ages of 17 and 29, 968 (72%) age 30-59, and 119 (9%) 60 or older. Fifty three percent were
124 male and 47% had confirmed SARS-CoV-2 diagnosis by prior PCR testing. Median days
125 between symptom onset to serum antibody test was 24 days (range 3 -70), median days between
126 symptom resolution to antibody test was 15 (4-77) and median duration of symptoms was 9 days
127 (1-67). Of the 1,343 total participants, almost all were outpatients who had experienced mild to
128 moderate symptoms, and only 3% were seen in our emergency department or hospital.

129 Seven hundred and sixty-one (57%) participants of the total sample were antibody positive, 61
130 (5%) were weakly positive, and 521 (39%) were negative. Neither age, gender, nor symptom
131 duration was associated with antibody response. In the 584 participants for whom both
132 nasopharyngeal PCR testing and serum antibody testing was available, SARS-CoV-2 RNA was
133 detected in 249 (42%) at a median of 20 days from symptom onset (range 11-43) and 12 days
134 from symptom resolution (range 5-28).

135 Six hundred and twenty-four participants had confirmed SARS-CoV-2 disease by PCR prior to
136 coming for testing, either by self-report or documented in our electronic medical record; if self-
137 reported, participants provided the date of testing. In this subgroup the average age was 39
138 (range 17-76) and 59% were male. At first test, five hundred and eleven (82%) were strongly
139 antibody positive at titer $\geq 1:320$, 42 (7%) were weakly positive, and 71 (11%) were negative
140 (**Figure 1A**). We asked the 18% with initial negative or weakly positive antibody response to
141 return for a second test ten or more days later. At the time of the first test, 217 (35%) were still
142 PCR positive (range 5-22 days from symptom resolution) (**Figure 2**). Median duration of
143 symptoms in this group was nine days (range 1-31). Neither age nor sex was associated with a
144 strong antibody response. Greater number of days between symptom onset and antibody test
145 was associated with a higher titer antibody test (23 days versus 20 days). Symptom duration was
146 also associated with higher antibody titers (9 days versus 7 days). (**Table 2**)

147 In the subgroup of 719 participants with suspected disease that did not have confirmed SARS-
148 CoV-2 infection, average age was 41 (17-76) and 47% were male. 250 (35%) were strongly
149 antibody positive, 19 (3%) were weakly positive, and 436 (62%) were negative. Antibodies
150 were measured a median of 28 days from symptom-onset and 19 days from date of symptom
151 resolution. In this group, neither age, gender, nor symptom duration was associated with
152 stronger antibody response. (**Table 1**)

153 Of the 113 participants with PCR confirmed SARS-CoV-2 and weakly positive or negative titers
154 on their first serum antibody test, 64 have returned for follow up antibody titers at the time of
155 submission. Of these, 57 (89%) displayed increased titers between the two tests, a median of 13
156 days (5-25) later (**Figure 1B**). Four remained weakly positive, and three remained negative.

157 The three that remained negative all self-reported positive PCR testing (none were documented
158 in our EMR). (**Table 2**)

159 While all survey participants self-reported complete resolution of symptoms three to 14 or more
160 days prior to testing, 249 (19%) tested positive for nasopharyngeal SARS-CoV-2 RNA. The
161 maximum time of positive nasopharyngeal PCR testing was 43 days from symptom onset and 28
162 days from symptom resolution. For the 182 individuals who returned for repeat nasopharyngeal
163 swabbing at least three days after prior positive test, 61% were negative on the repeat test, a
164 median of 10 days (range 3-21) after the first test. Seventy (39%) remained positive and were
165 rescheduled for another nasopharyngeal PCR 7-10 days later. (**Table 3**).

166 **Discussion**

167 Our survey provides a large cross-sectional representation of SARS-CoV2 RNA and antibodies
168 found in participants recruited after recovery from SARS-CoV-2 during the early weeks of the
169 outbreak in New York City. Understanding the duration of potential infectiousness and the time
170 to IgG antibody response are critical to the containment of SARS-CoV-2 spread, and the plans
171 for widespread antibody testing over the coming months. Some countries, states and
172 organizations may even be considering antibody testing prior to letting individuals return to
173 work.

174 In contrast to some of the prior literature on formation of antibodies, over 99% of the patients
175 who self-reported or had laboratory documented SARS-CoV-2 infection developed IgG
176 antibodies using our assay. Additionally, our findings suggest that IgG antibodies develop over a
177 period of 7 to 50 days from symptom onset and 5 to 49 from symptom resolution, with a median
178 of 24 days from symptom onset to higher antibody titers, and a median of 15 days from symptom

179 resolution to higher antibody titers. This suggests that the optimal time frame for widespread
180 antibody testing is at least three to four weeks after symptom onset and at least two weeks after
181 symptom resolution. In our survey, we did not find evidence for a decrease in IgG antibody titer
182 levels on repeat sampling.

183 Although we do not yet know what, if any, immunity is conferred by IgG or the duration of the
184 IgG response, at this time it seems likely that IgG to SARS-CoV-2 may confer some level of
185 immunity based on what is known about viral immunity to other pathogens. In prior studies of
186 SARS-CoV-1 and Middle East Respiratory Syndrome patients, IgG peaked within months of
187 primary infection and waned over time.¹¹⁻¹³ Similar observations have been made with human
188 coronaviruses where immunity can confer at least limited protection.¹³ In order to study the
189 duration of IgG antibody response to SARS-CoV-2, we plan to follow our cohort for the next six
190 months in order to track titer levels.

191 Among participants who did not have prior PCR but who were deemed high risk, i.e., people
192 with symptoms consistent with SARS-CoV-2 who were told by a healthcare provider they had
193 presumed infection, lived with someone with confirmed infection, or were healthcare workers
194 themselves, we found 36% of this population had IgG antibodies to SARS-CoV-2. This finding
195 suggests that a majority of participants suspected of having Covid-19 actually were not infected
196 with SARS-CoV-2; however, it may also include a false negative rate of our assay (which has a
197 92% sensitivity) or insufficient time for participants to mount an IgG antibody response. This
198 underscores the importance of expanded PCR testing in order to improve diagnosis of this
199 disease even in minimally symptomatic individuals.

200 The 19% of participants who remained PCR positive despite self-reporting full resolution of
201 symptoms bring to light important considerations regarding the possible duration of viral
202 transmission, and the limited utility of PCR testing to ensure clearance. This positive PCR
203 finding could represent shedding of nonviable virus, non-infectious genome fragments or viruses
204 engulfed by immune cells, asymptomatic carriers of SARS-CoV-2, or ongoing disease despite
205 full resolution of symptoms. Detection of viral genome even months after resolution of infection
206 has been shown for viruses like measles virus.¹⁴ Further studies are warranted to determine if
207 nasopharyngeal PCR positivity is related to transmission, and if so, for how long. This will have
208 significant implications in terms of guidance of when recovered SARS-CoV-2 individuals should
209 end self-isolation, currently recommended at least seven days after symptom onset with at least
210 72 hours without fever off of antipyretics. If PCR positivity is a result of identifying
211 noninfectious genome or nonviable virus, it may be necessary to avoid use of PCR as a definition
212 of clearance in SARS-CoV-2.

213 There are limitations to our evaluation. All participants had mild disease, and thus these data
214 may not reflect PCR or Ab findings in a moderately or severely ill population. Participants were
215 recruited based on self-referral and self-reporting, which may have led to recall bias in terms of
216 dates of symptom onset, resolution and duration, and may have led us to miss asymptomatic
217 carriers who did not inquire about testing. Additionally, given recruitment via an English-
218 language online survey and our use of a single collection site, our sample likely included more
219 recovered participants of younger ages with internet access and the ability to travel to our site for
220 testing. Furthermore, we did not collect rigorous data regarding symptom severity which could
221 potentially be related to the timeline and strength of IgG antibody response to SARS-CoV-2.

222 Future studies are planned to help us understand the magnitude and duration of the IgG response
223 in patients recovered from SARS-CoV-2, and what antibody titer may be necessary to protect
224 individuals from reinfection. We also hope to better understand which, if any, patients do not
225 mount an IgG immune response. Finally, the clinical significance of prolonged positive SARS-
226 CoV-2 nasopharyngeal PCR in the absence of symptoms requires further clarification.

227 **Conclusion**

228 Duration of nasopharyngeal PCR SARS-CoV-2 PCR detection and time to mount IgG antibody
229 response have important implications for the spread of this virus and risk for re-infection among
230 individuals. In our sample, we found that 19% of people continue to have nasopharyngeal PCR
231 positivity two or more weeks after symptom resolution, and that it takes three or more weeks to
232 mount an IgG antibody response believed to be potentially protective against future infection.
233 Reassuringly, we found that almost all participants with confirmed SARS-CoV-2 infection in our
234 study mounted an IgG immune response to this disease. Taken together, these findings will be
235 pivotal in understanding disease activity of SARS-CoV-2 moving forward.

236

237

238 **Acknowledgements**

239 Thank you to all the patients who generously came in for testing and plasma donation. Thanks to
240 Kim Stone and Kim Muellers for their work on data analysis.

241 Work on SARS-CoV-2 immunity in the Krammer is supported by the National Institute of
242 Allergy and Infectious Disease (NIAID) Collaborative Influenza Vaccine Innovation Centers
243 (CIVIC) contract 75N93019C00051 and the NIAID Centers of Excellence for Influenza
244 Research and Surveillance (CEIRS) contract HHSN272201400008C as well as institutional and
245 philanthropic funding.

Table 1.

	Respondents with past PCR+ confirmed SARS-CoV-2				p-value
	All (n=624)	Ab+ (511)	Ab Weak + (42)	Ab- (71)	
Age, Mean (SD)	39.14 (12.09)	39.11 (11.94)	38.10 (12.28)	40.00 (13.19)	0.716
Age, Range	17 - 76	17 - 76	18 - 67	19 - 74	
Age by Category, N (%)					0.117
17-29	144 (23%)	110 (22%)	15 (36%)	19 (27%)	
30-59	432 (69%)	364 (71%)	24 (57%)	44 (62%)	
60+	48 (8%)	37 (7%)	3 (7%)	8 (11%)	
Gender					0.002
Male, N (valid %)	368 (59%)	303 (60%)	33 (81%)	32 (46%)	
Female, N (valid %)	252 (41%)	206 (40%)	8 (19%)	38 (54%)	
Test Results, N (%)					
All Still PCR+ at next test	217 (35%)	159 (31%)	22 (52%)	36 (51%)	
PCR+/Ab+	159 (26%)	-	-	-	-
PCR-/Ab-	18 (3%)	-	-	-	-
PCR-/Ab+	95 (15%)	-	-	-	-
PCR+/Ab-	36 (6%)	-	-	-	-
PCR-/Abweak+	7 (1%)	-	-	-	-
PCR+/Abweak+	22 (4%)	-	-	-	-
No new PCR/Ab+	257 (41%)	-	-	-	-
No new PCR/Abweak+	13 (2%)	-	-	-	-
No new PCR/Ab-	17 (3%)	-	-	-	-
Time from last PCR+ to Current Result, Median days (Range)	19 (8-54)	19 (8-49)	18 (8-26)	17 (10-54)	0.004
Symptoms, Median days (Range)					<0.00
Onset to Result	23 (3-46)	23 (1-46)	20 (15-28)	21 (14-34)	1
Resolution to Result	14 (4-49)	14 (-1-49)	13.5 (4-26)	12 (4-25)	0.013
Symptom Duration	9 (1-31)	9 (1-31)	7 (2-14)	10 (2-27)	0.017
	Respondents with NO past PCR+, suspected SARS-CoV-2				
	All (n=719)	Ab+ (250)	Ab Weak + (19)	Ab- (450)	p-value
Age, Mean (SD)	41.39 (12.16)	39.49 (12.76)	41.53 (12.73)	42.44 (11.69)	0.009
Age, Range	17 - 76	17 - 76	27 - 71	21 - 75	
Age by Category, N (%)					0.008
17-29	112 (16%)	55 (22%)	4 (21%)	53 (12%)	
30-59	536 (75%)	174 (70%)	12 (63%)	350 (78%)	
60+	71 (10%)	21 (8%)	3 (16%)	47 (10%)	
Gender					0.388
Male, N (valid %)	338 (47%)	123 (49%)	11 (58%)	204 (45%)	

Female, N (valid %)	381 (53%)	127 (51%)	8 (42%)	246 (55%)	
Live with someone tested pos?	62 (9%)	33 (13%)	1 (5%)	28 (6%)	0.061
Had direct patient contact?	69 (10%)	24 (10%)	1 (5%)	44 (10%)	0.293
Told by doctor had COVID-19?	264 (23%)	115 (46%)	10 (53%)	139 (31%)	0.020
Test Results, N (%)					
PCR+/Ab+	24 (3%)	-	-	-	
PCR-/Ab-	174 (24%)	-	-	-	
PCR-/Ab+	38 (5%)	-	-	-	
PCR+/Ab-	7 (1%)	-	-	-	
PCR-/Abweak+	3 (1%)	-	-	-	
PCR+/Abweak+	1 (0%)	-	-	-	
No PCR/Ab+	188 (26%)	-	-	-	
No PCR/Abweak+	15 (2%)	-	-	-	
No PCR/Ab-	269 (37%)	-	-	-	
Symptoms, Median days (Range)					
Onset to Result	28 (3-70)	26 (7-50)	26 (22-30)	32.5 (3-70)	1 <0.00
Resolution to Result	19 (5-70)	18 (5-34)	17 (10-57)	21.5 (5-70)	1 <0.00
Symptom Duration	9 (2-67)	8 (2-67)	10 (5-21)	10 (2-43)	0.021

246
247
248

Table 2.

	Antibody Pts with 2nd Ab test as of 4/24 (N=64)		
	Test 1	Test 2	Test 3
Antibody result, N (%)	*1st test restricted to 4/10 or earlier	*2nd test 4/22 or earlier	
positive	-	48 (75%)	2 (3%)
weakly positive	19 (30%)	13 (20%)	-
negative	45 (70%)	3 (5%)	-
Time Bw results 1 & 2, Median (Range)	13 (5-25)		-
Change in result, N (%)			
neg to pos	33 (52%)	-	-
neg to weak pos	9 (14%)	-	-
neg to neg	3 (5%)	-	-
weak pos to pos	15 (23%)	-	-
weak pos to neg	0 (0%)	-	-
weak pos to weak pos	4 (6%)	-	-

Time bw results by result change, Median (Range)			
neg to pos	14 (5-22)	-	-
neg to weak pos	12 (6-19)	-	-
neg to neg	14 (12-15)	-	-
weak pos to pos	11 (7-16)	-	-
weak pos to neg	-	-	-
weak pos to weak pos	14.5 (13-18)	-	-
Symptoms, Median days (Range)		31.5 (20-	
Onset to Result	19 (2-31)	42)	-
Resolution to Result	12 (4-25)	24 (12-32)	-
Symptom Duration	5 (2-27)	-	-

249
250
251
252
253

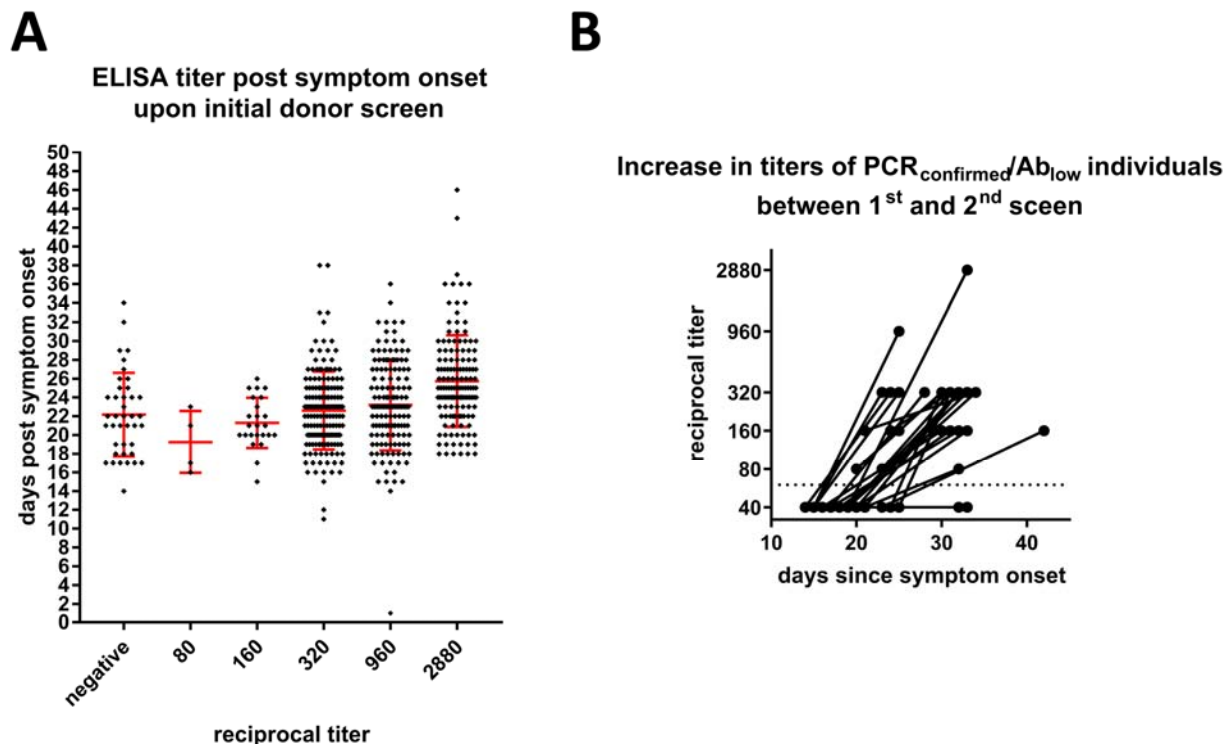
Table 3.

	PCR		
	Pts with 2nd PCR test as of 4/24 (N=182)		
	Test 1	Test 2	Test 3
PCR result, N (%)	<i>*1st test restricted to 4/10 or earlier</i>	<i>*2nd test 4/22 or earlier</i>	
Detected	182 (100%)	70 (39%)	8 (57%)
Not Detected	-	112 (61%)	6 (43%)
Time Bw results 1 and 2, Median (Range)	10 (3-21)	-	-
Change in result, N (%)			
Detected to Detected	70 (39%)	-	-
Detected to Not Detected	12 (61%)	-	-
Time bw results by result change, Median (Range)			
Detected to Detected	10 (3-21)	-	-
Detected to Not Detected	10 (4-21)	-	-
Symptoms, Median days (Range)			
Onset to Result	20 (1-43)	30 (6-50)	-
Resolution to Result	12 (-1-20)	22 (4-34)	-
Symptom Duration	8 (1-27)	-	-

254
255
256
257
258
259
260

261
262
263
264
265
266
267

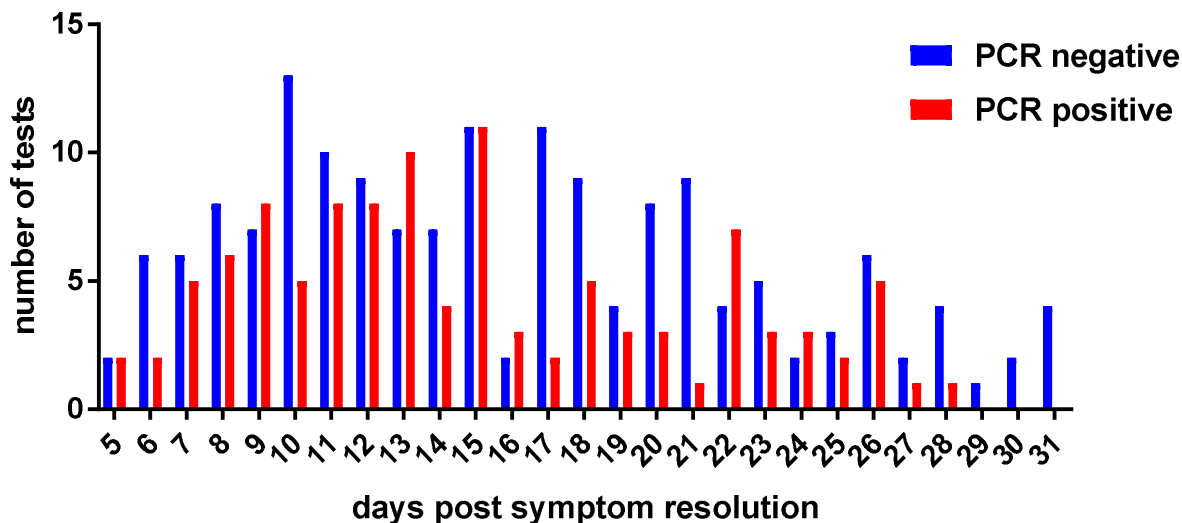
Figure Legends



268
269
270
271
272
273
274
275

Figure 1: Antibody responses in PCR-confirmed COVID19 individuals. **A** shows antibody testing results days post symptom onset stratified into titer categories. The highest titer category contains both 1:2880 and >1:2880 titers. Bars represent the mean; error bars the standard deviation. **B** Individuals with negative titers were recalled for retesting. Both the original test result and the second test result post day onset are shown. Negative titers were assigned a value of 1:40 for representation purpose, the line represents the cut-off between positive and negative titers. Only results for individuals for which date of symptom onset is known are shown.

PCR+ and PCR- samples post symptom resolution



276
 277 **Figure 2: PCR results of initially PCR-confirmed COVID19 individuals.** Viral genome was
 278 detected in nasopharyngeal swabs of individuals screened as plasma donors. Number of subjects
 279 positive or negative days post symptom resolution are shown. More than one result from an
 280 individual might be shown if tested more than once on different days. Only results for subject for
 281 which a date of symptom resolution was available are shown.

282
 283
 284
 285
 286
 287
 288
 289
 290

References

291
 292
 293 1. Chang, Mo G, Yuan X, et al. Time Kinetics of Viral Clearance and Resolution of Symptoms
 294 in Novel Coronavirus Infection. *Am J Respir Crit Care Med* 2020.
 295 2. Lan L, Xu D, Ye G, et al. Positive RT-PCR Test Results in Patients Recovered From COVID-
 296 19. *JAMA* 2020.
 297 3. Xiao AT, Tong YX, Zhang S. Profile of RT-PCR for SARS-CoV-2: a preliminary study from 56
 298 COVID-19 patients. *Clin Infect Dis* 2020.
 299 4. Chu CM, Leung WS, Cheng VC, et al. Duration of RT-PCR positivity in severe acute
 300 respiratory syndrome. *Eur Respir J* 2005;25:12-4.
 301 5. Wu F, Wang A, Liu M, et al. Neutralizing antibody responses to SARS-CoV-2 in a COVID-
 302 19 recovered patient cohort and their implications. *medRxiv* 2020:2020.03.30.20047365.
 303 6. Duan K, Liu B, Li C, et al. Effectiveness of convalescent plasma therapy in severe COVID-
 304 19 patients. *Proc Natl Acad Sci U S A* 2020.

- 305 7. Bloch EM, Shoham S, Casadevall A, et al. Deployment of convalescent plasma for the
306 prevention and treatment of COVID-19. *J Clin Invest* 2020.
- 307 8. Shen C, Wang Z, Zhao F, et al. Treatment of 5 Critically Ill Patients With COVID-19 With
308 Convalescent Plasma. *JAMA* 2020.
- 309 9. Amanat F, Stadlbauer D, Strohmeier S, et al. A serological assay to detect SARS-CoV-2
310 seroconversion in humans. *medRxiv* 2020:2020.03.17.20037713.
- 311 10. Stadlbauer D, Amanat F, Chromikova V, et al. SARS-CoV-2 Seroconversion in Humans: A
312 Detailed Protocol for a Serological Assay, Antigen Production, and Test Setup. *Curr Protoc*
313 *Microbiol* 2020;57:e100.
- 314 11. Cao WC, Liu W, Zhang PH, Zhang F, Richardus JH. Disappearance of antibodies to SARS-
315 associated coronavirus after recovery. *N Engl J Med* 2007;357:1162-3.
- 316 12. Al-Abdely HM, Midgley CM, Alkhamis AM, et al. Middle East Respiratory Syndrome
317 Coronavirus Infection Dynamics and Antibody Responses among Clinically Diverse Patients,
318 Saudi Arabia. *Emerg Infect Dis* 2019;25:753-66.
- 319 13. Huang AT, Garcia-Carreras B, Hitchings MDT, et al. A systematic review of antibody
320 mediated immunity to coronaviruses: antibody kinetics, correlates of protection, and
321 association of antibody responses with severity of disease. *medRxiv*
322 2020:2020.04.14.20065771.
- 323 14. Lin WH, Kouyos RD, Adams RJ, Grenfell BT, Griffin DE. Prolonged persistence of measles
324 virus RNA is characteristic of primary infection dynamics. *Proc Natl Acad Sci U S A*
325 2012;109:14989-94.
326