

Key predictors of attending hospital with COVID19: An association study from the COVID Symptom Tracker App in 2,618,948 individuals

Mary Ni Lochlainn^{1*}/Karla A. Lee^{1*}/Carole H. Sudre^{2*}, Thomas Varsavsky², M. Jorge Cardoso², Cristina Menni¹, Ruth C. E. Bowyer¹, Long H. Nguyen³, David A. Drew³, Sajaysurya Ganesh⁴, Julien Lavigne du Cadet⁴, Alessia Visconti¹, Maxim B. Freidin¹, Marc Modat², Mark S Graham², Joan Capdevila Pujol⁴, Benjamin Murray², Julia S El-Sayed Moustafa¹, Xinyuan Zhang¹, Richard Davies⁴, Mario Falchi¹, Jonathan Wolf⁴, Tim D. Spector¹, Andrew T. Chan³, Sebastien Ourselin^{2*}, Claire J. Steves^{1*} on behalf of the COPE Consortium

1. Department of Twin Research and Genetic Epidemiology, King's College London, Westminster Bridge Road, SE17EH London, UK
2. School of Biomedical Engineering & Imaging Sciences, King's College London, Westminster Bridge Road, SE17EH London, UK
3. Clinical and Translational Epidemiology Unit, Massachusetts General Hospital, MA, USA
4. Zoe Global Limited, 164 Westminster Bridge Road, London SE1 7RW, UK

* These authors contributed equally to this work

Corresponding authors: Mary Ni Lochlainn & Claire J Steves

Abstract

Objectives: We aimed to identify key demographic risk factors for hospital attendance with COVID-19 infection.

Design: Community survey

Setting: The COVID Symptom Tracker mobile application co-developed by physicians and scientists at King's College London, Massachusetts General Hospital, Boston and Zoe Global Limited was launched in the UK and US on 24th and 29th March 2020 respectively. It captured self-reported information related to COVID-19 symptoms and testing.

Participants: 2,618,948 users of the COVID Symptom Tracker App. UK (95.7%) and US (4.3%) population. Data cut-off for this analysis was 21st April 2020.

Main outcome measures: Visit to hospital and for those who attended hospital, the need for respiratory support in three subgroups (i) self-reported COVID-19 infection with classical symptoms (SR-COVID-19), (ii) self-reported positive COVID-19 test results (T-COVID-19), and (iii) imputed/predicted COVID-19 infection based on symptomatology (I-COVID-19). Multivariate logistic regressions for each outcome and each subgroup were adjusted for age and gender, with sensitivity analyses adjusted for comorbidities. Classical symptoms were defined as high fever and persistent cough for several days.

Results: Older age and all comorbidities tested were found to be associated with increased odds of requiring hospital care for COVID-19. Obesity (BMI >30) predicted hospital care in all models, with odds ratios (OR) varying from 1.20 [1.11; 1.31] to 1.40 [1.23; 1.60] across population groups. Pre-existing lung disease and diabetes were consistently found to be associated with hospital visit with a maximum OR of 1.79 [1.64, 1.95] and 1.72 [1.27; 2.31]) respectively. Findings were similar when assessing the need for respiratory support, for which age and male gender played an additional role.

Conclusions: Being older, obese, diabetic or suffering from pre-existing lung, heart or renal disease placed participants at increased risk of visiting hospital with COVID-19. It is of utmost importance for governments and the scientific and medical communities to work together to find evidence-based means of protecting those deemed most vulnerable from COVID-19.

Trial registration: The App Ethics have been approved by KCL ethics Committee REMAS ID 18210, review reference LRS-19/20-18210

Introduction:

As the coronavirus disease 2019 (COVID-19) pandemic escalates and countries struggle to contain the virus, healthcare systems are under increasing pressure as unprecedented numbers require hospitalisation and respiratory support. Emergency departments and intensive care units worldwide are under strain, and medical resources are being diverted to tackle the crisis. There is a pressing need to identify risk factors for severe disease, and particularly to identify key predictors of hospitalisation amongst patients with COVID-19.

In order to address this, we used self-reported data collected on the COVID Symptom Tracker app (1) to identify key demographic risk factors for hospitalisation and the need for respiratory support in the context of COVID-19.

Materials and Methods

As part of the COronavirus Pandemic Epidemiology (COPE) Consortium (1), the COVID Symptom Tracker smartphone application (“app”) co-developed by King’s College London, Massachusetts General Hospital, and Zoe Global Limited was launched in the UK on 24th March 2020 and was available in the US beginning 29th March 2020 (1,2). Individuals without symptoms are encouraged to use the app. It captured self-reported information related to COVID-19 symptoms. On first use, the app records the user’s self-reported location, age, and core health risk factors (Table 1). At this point height and weight are self-reported, allowing calculation of body mass index (BMI). With continued use, participants provide daily updates on symptoms, information on health care visits, COVID-19 testing results, and whether they are seeking healthcare, including the level of intervention and related outcomes.

1	What sex were you assigned at birth?
2	What is your height?
3	What is your weight?
4	Do you have lung disease or asthma?
5	Do you smoke?
6	Do you have heart disease?
7	Do you have diabetes?
8	Do you have kidney disease?
9	What treatment did you receive while in the hospital / What treatment are you receiving right now? a) None b) Oxygen and fluids (breathing support administered through an oxygen mask, no pressure applied) c) Non-invasive ventilation Breathing support administered through an oxygen mask, which pushes oxygen into your lungs d) Invasive ventilation; Breathing support administered through an inserted tube. People are usually asleep for this procedure

Table 1. Relevant questions asked in the COVID Symptom Tracker App

Assessment of exposure, outcomes, and covariates

Exposure, outcome and covariates were all ascertained via the app. A subset of individuals reported being tested for COVID-19. BMI was calculated as kg/m^2 and considered as a categorical variable (3). Classical symptoms of COVID-19 are defined as “high fever and persistent cough for several days”. This was either directly self-reported as an outcome of an enrolment question or if participants reported jointly fever and persistent cough for more than two days. Visit to hospital was recorded if the location was ever self-recorded as hospital or “back from hospital”.

Statistical analysis

Data from the app were downloaded and only records where the self-reported characteristics fell within the following ranges were utilised for further analyses: age between 16 (18 in the US) and 100; BMI between 16 and 55 kg/m^2 .

Separate logistic regression models were fit to predict two different outcomes:

1. Visit to hospital as outcome were fit to test for association between i) self-reported obesity and ii) chronic lung disease and asthma, heart disease, diabetes and kidney disease in the following groups: 1) self-reported COVID-19 infection with classical symptoms (SR-COVID19); 2) self-reported positive COVID-19 test results (T-COVID19); 3) imputed/predicted COVID-19 infection based on symptomatology (I-COVID19)
Imputation for testing positive for COVID was performed using the data at day of maximum sum of symptoms and applying a logistic regression using coefficients defined previously (2). 100 samples from the coefficient distribution were sampled to create the predictions. A participant was considered as positive 50% of the time. Please see Supplementary Table 1 of the coefficients for the logistic regression.
2. The need for respiratory support (oxygen or ventilation) as the outcome to test for similar association with comorbidities in the specified groups was carried out, for participants who had provided information about the treatment received in hospital.

Sign of recovery was defined as a decrease of more than two points in the sum of reported symptoms compared to the maximum sum of symptoms.

Results

The total studied sample comprised 2,618,948 individuals who supplied their self-assessment on the COVID Symptom Tracker app after quality control, including 27.4% males. The majority of app users were based in the UK (95.7%), and the remainder in the US (4.3%). Mean age (SD) was 40.3 (13.9) years and mean BMI was 26.74 (5.74). A total of 171,899 (10.5%) replied positively to the question: "Have you already had COVID-19?" 8,4260 (3.2%) replied positively to the question enquiring about classical symptoms of COVID-19.

Diabetes was reported by 75,163 (2.9%), heart disease by 55,196 (2.1%), lung disease by 316,845 (12.1%) and kidney disease by 16,177 (0.6%). 16.3% of the sample reported at least one of the following comorbidities: diabetes, lung, heart or kidney disease. Table 2 summarises the demographic characteristics in the different population groups following the removal of those for whom the outcome (recovery or hospital visit) was still unknown.

Group	No hospital visit (H-) vs Hospital visit (H+)						No respiratory support (RS-) vs respiratory support (RS+)					
	SR-COVID-19		T-COVID-19		I-COVID-19		SR-COVID19		T-COVID19		I-COVID19	
Category	H-	H+	H-	H+	H-	H+	RS-	RS+	RS-	RS+	RS-	RS+
Number	33470	2847	3355	1527	41369	2789	1732	520	730	551	2880	680
(%Male)	(28.7)	(23.6)	(28.2)	(32.8)	(39.7)	(30.2)	(20.8)	(37.1)	(27.4)	(45.2)	(22.0)	(31.6)
Age (years)	43.0	44.3	40.8	44.2	40.2	42.7	43.3	47.5	43.8	48.5	42.8	46.7
(M/SD)	(12.7)	(12.4)	(11.7)	(12.9)	(11.8)	(11.9)	(12.0)	(13.1)	(13.0)	(14.7)	(11.9)	(13.5)
BMI (kg/m2)	27.5	28.4	27.1	28.6	26.8	28.0	28.3	28.9	28.3	29.3	27.9	29.1
(M/SD)	(6.0)	(6.4)	(5.9)	(6.5)	(5.3)	(5.9)	(6.4)	(6.4)	(6.6)	(6.5)	(6.3)	(6.8)
Obesity (%)	27.4	33.1	24.7	33.5	24	30.9	33.4	35.6	31.8	36.8	30.7	36.6
Lung disease (%)	15.4	24.2	12.8	19.7	13.2	21.3	22.7	32.9	18.9	25.8	20.7	33.5
Heart disease (%)	1.8	3.6	1.3	3.3	1.3	2.9	3.0	6.0	3.6	4.5	2.5	4.7
Diabetes (%)	2.8	4.5	2.6	5.4	2.2	3.8	3.8	9.6	4.9	10.2	3.3	8.2
Kidney disease (%)	0.6	1.2	0.2	1.7	0.5	1.0	1.0	1.9	1.7	3.3	0.8	1.9

Table 2. Demographic characteristics of the study population.

M = Mean; SD = standard deviation; SR-, self-reported; T-, tested; I-, imputed COVID-19

Across all tested groups, obesity (BMI>30) was associated with a higher risk of attending hospital with COVID-19 symptomatology; odds ratios (OR) ranged from 1.20 [1.11; 1.31] in the SR-COVID-19 group to 1.40 [1.23; 1.60] in the T-COVID-19 group. Lung disease was the most commonly self-reported comorbidity and was found to be a key predictor for hospital visits in all groups with OR varying from 1.68 [1.43, 1.97] for T-COVID-19 to 1.79 [1.64,1.95] for SR-COVID-19.

Heart disease was a significant risk factor in all but the tested group, notably with a stronger effect in the group I-COVID-19 group (1.80 [1.51; 2.16]). The strongest effect of diabetes was observed for the T-COVID-19 group (1.72 [1.27; 2.31]) but a significant effect was seen for all groups. As expected, kidney disease was less frequently reported within this cohort but was nonetheless found to be a significant predictor for a hospital visit in all groups with OR of 1.46[1.02, 2.09], 4.07 [1.97,8.45] and 1.60 [1.29, 2.16] for the SR-COVID-19, T-COVID-19 and I-COVID-19 groups respectively. Figure 1 plots ORs for the considered risk factors, according to the three defined groups.

While significant in all groups, the effect of age was less strong in SR-COVID-19 (1.007 [1.004 1.01]) when compared with T-COVID-19 (1.02 [1.02;1.03]). Correcting for current smoking did not modify the results but there was a significant difference in smokers' ratio according to the presented groups with ORs as follows: SR-COVID 1.07 [0.97, 1.17], T-COVID - 1.30 [1.11, 1.52], and I-COVID - 1.16 [1.08 1.25]. Figure 2 illustrates the difference in age and BMI distribution across the different groups.

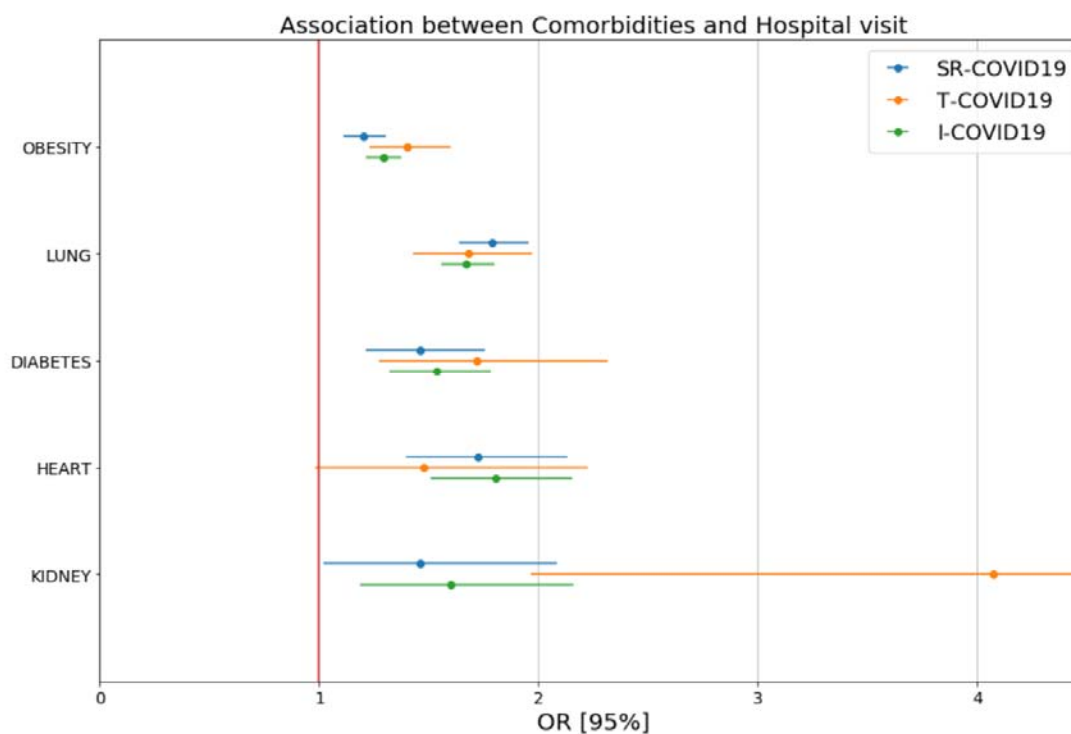


Figure 1. Plotted odds-ratios with their confidence interval for the considered risk factors, according to the three defined groups

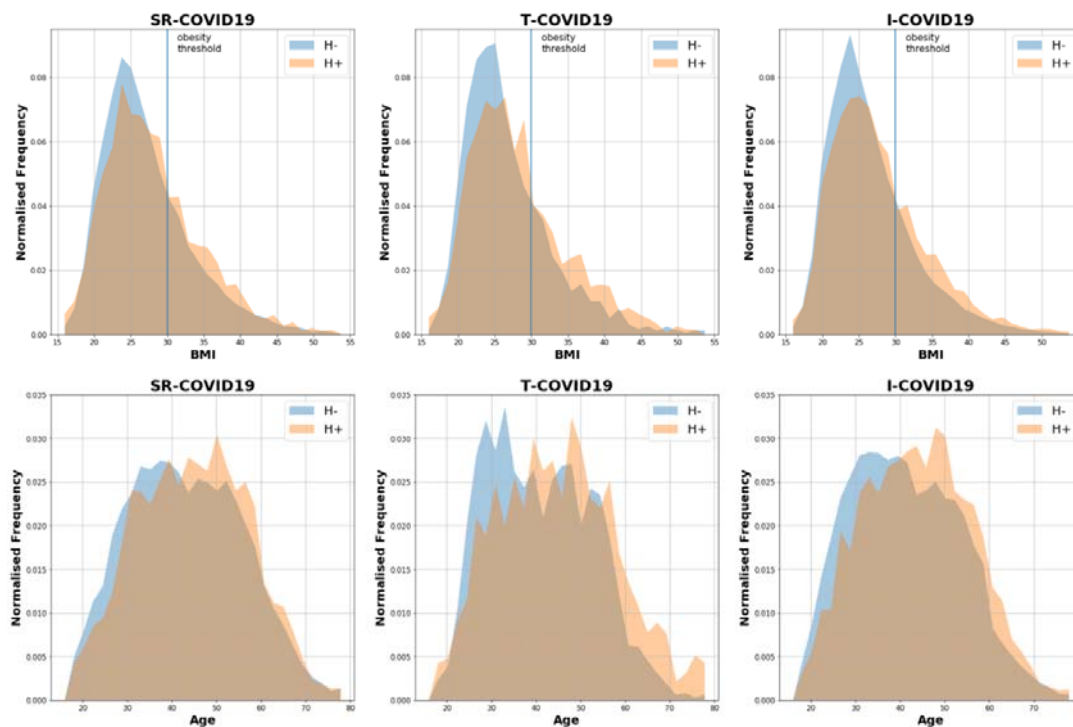


Figure 2: Difference in age and BMI distribution across the different groups H+, hospitalised; H-, not hospitalised; SR-, self-reported; T-, tested; I-, imputed COVID-19

Requirement for respiratory support (RS)

Amongst those who reported a visit to hospital and then subsequently updated the app with the medical support they received, respiratory support (oxygen and/or ventilation) was reported in 43.0, 23.1 and 19.1% of the cases, for the T-COVID-19, SR-COVID-19 and I-COVID-19 groups respectively. Plotted ORs for needing respiratory support, according to the three defined groups are shown in Figure 3.

Pre-existing lung disease and diabetes were consistently associated with a higher risk of requiring respiratory support with OR ranging from 1.52 for lung disease in T-COVID19 to 2.03 for diabetes in SR-COVID19. Individuals with obesity were notably more likely to require medical support for the T-COVID19 and I-COVID19 groups with OR of 1.33 [1.04 1.70] and 1.20 [1.00,1.44] respectively. Interestingly, while gender was inconsistently associated with hospital visit, male gender was associated with a substantially greater risk for requiring respiratory support, groups with OR of 2.11 [1.65 2.69] and 2.14 [1.72 2.66] and 1.83 [1.28; 2.64] for SR-COVID-19, T-COVID-19 and I-COVID-19 respectively. Age was also more predictive of treatment course than of hospital visit with OR around 1.02 in all three groups.

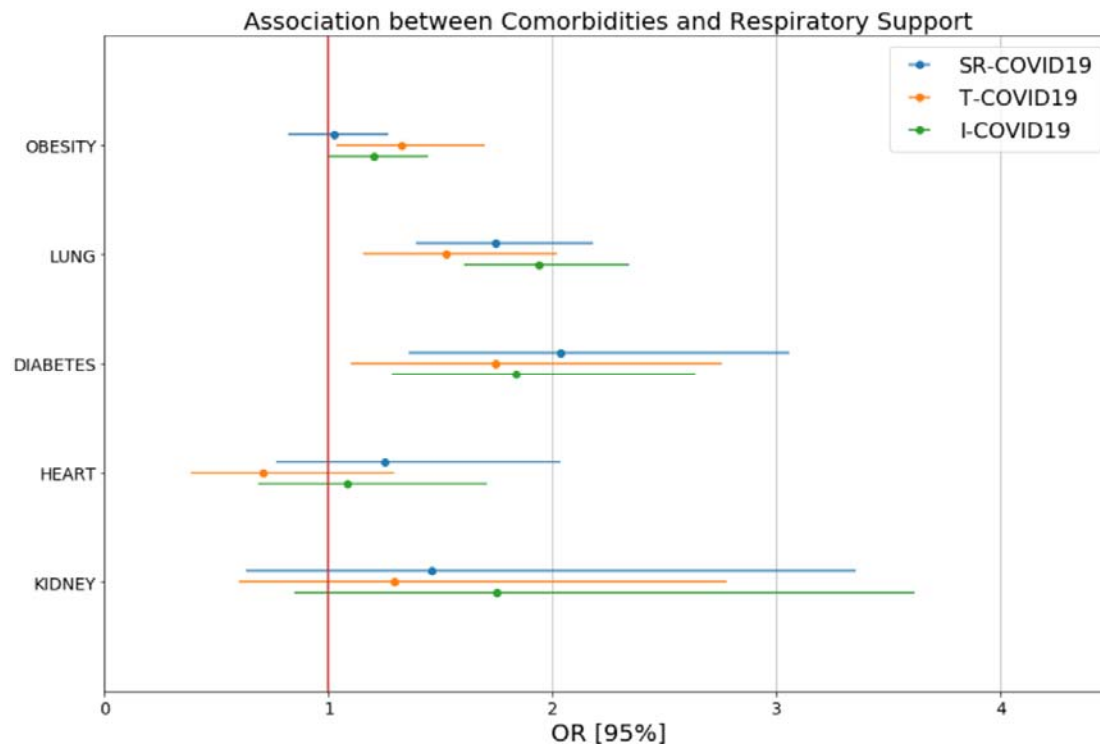


Figure 3: Plotted odds-ratios with their confidence interval for needing respiratory support, according to the three defined groups

Discussion

In this study we found that age, obesity, diabetes and pre-existing lung, renal and cardiac disease, were risk factors for a hospital visit with COVID-19 amongst a large but relatively young, community-based population of app users.

While a number of studies have now reported the increased risk of SARS-CoV-2 in those with diabetes, hypertension and cardiovascular disease (CVD) (4–9), all of which are associated with obesity, the reporting of body mass index (BMI) or obesity has been left out of most initial studies. Only 2 studies have reported BMI in the context of COVID-19 (Table 3). The omission of obesity from initial cohort studies is particularly lamentable when one considers that during the H1N1 outbreak (‘swine flu’), obesity was found to be an independent risk factor for ventilation, as well as increased morbidity and mortality (10,11). Since then, Kwong et al. have published a study that explored the relationship between BMI and seasonal influenza infection using a series of Canada’s cross-sectional population-based health surveys covering twelve influenza seasons (12). Analysis of the retrospective cohort demonstrated that obese people are at greater risk for respiratory hospitalisations during the seasonal flu periods. The World Health Organisation reports that 27.8% of adults in the UK are obese, the third highest rate in Europe. Worldwide, more than 650 million adults are obese (13). Obesity is associated with an increased risk of a wide range of diseases (14), along with being associated with greater risk of infection, and of developing serious complications of common infections (15). Importantly, obese individuals are at higher risk of developing Acute Respiratory Distress Syndrome (ARDS) (16), a common complication of SARS-CoV-2 (5).

In the developed world age is now the leading risk factor for many of our most common diseases, including CVD, cancer and neurodegenerative disease (17). Older adults are most affected by annual influenza outbreaks with 75% of influenza-associated deaths in the US in the 2018-2019 season being adults aged >65 years (18). Initial data emerging from the countries first affected by the COVID-19 pandemic reveals that older adults are again disproportionately affected, with multiple studies reporting higher mortality, a more severe disease course and longer length of hospital stay amongst the older population (5,7–9,19,20). The increased vulnerability of older adults to infection is often attributed to ‘immunosenescence’, a term which refers to decline in immunity with advancing age (21). Immunosenescence is associated with increased susceptibility to infection (21), re-

emergence of latent infections (22), reduced immune surveillance, contributing to diseases such as cancer (23) and the reduced efficacy of vaccines (24,25). Related to this is the concept of ‘inflammageing’, referring to the increase in systemic inflammation noted in older adults (26). Thus, the ageing immune system of an average older adult has higher numbers of circulating inflammatory cells but each with reduced ability to fight infection. However, ageing is a heterogeneous process, and some older adults, especially the physically active have immune systems more comparable to younger adults (27). We show older age as a risk factor for hospitalisation with COVID-19 but also urge more definition and careful consideration by policymakers and healthcare researchers alike. Advice from governments recommending them to stay indoors and “shield” or “cocoon” (28,29), due to their increased risk of morbidity and mortality from COVID-19 may be appropriate on average, but more sophisticated approaches (including immunity testing) should be conducted to avoid blanket decision making on the basis of age alone. The number of people over 60 has doubled since 1980, now exceeding 962 million. Careful consideration must be given to older people in the development of diagnostic, therapeutic, rehabilitation and vaccination programs, in order for such programs to maximise autonomy and minimise the burden on older people both from COVID-19 and the measures introduced to manage it.

Research in other respiratory viruses clearly suggests that patients with chronic respiratory diseases, particularly chronic obstructive pulmonary disease (COPD) and asthma, would be at increased risk of SARS-CoV-2 infection, and of more severe presentations of COVID-19 (30,31). However, chronic lung disease appears to be under-represented in the literature to date for COVID-19 (32); a similar pattern was seen with SARS. With the exception of one single-centre retrospective SARS study (33), clinical studies to date that report on comorbidities in either COVID-19 or SARS, reveal little evidence that chronic lung disease is a key predictor for hospitalisation in these groups (Table 4). To place this table in context, the World Health Organisation (WHO) estimates COPD prevalence to range between 4-20%, depending on the country, and rising considerably with age (34). The lower reported prevalence of chronic lung disease in the literature amongst patients diagnosed with COVID-19 is unexplained. It is possible that, in contrast to the diagnosis of diabetes, there was substantial underdiagnosis or poor recognition of pulmonary disease in patients with COVID-19 patients described in early Chinese cohort studies. Notably, the COVID Symptom Tracker App asked participants: “Do you have lung disease or asthma?”, and we believe that the group answering yes to this question likely includes a large proportion of individuals who self-reported mild asthma (or a previous history of mild asthma). Such diagnoses would possibly not be deemed sufficiently significant for hospital doctors to document as a relevant comorbidity when reporting patients in cohort studies, and so we caution against overinterpretation of the lung disease data herein.

As previously mentioned, many of the initial studies on COVID-19 reported an increased risk of SARS-CoV-2 in those with diabetes, hypertension and CVD (4–9). In the case of diabetes, COVID-19 has also been associated with developing diabetic ketoacidosis, even amongst those who usually have good glycaemic control (35,36). Less well-reported in the context of the pandemic, however, is renal disease. A number of the initial studies from China found that pre-existing renal disease was a risk factor for more severe COVID-19 infection, as summarised in a meta-analysis by Henry and Lippi (37); an overall OR of 3.03 (95% CI 1.09 – 8.47) was found for the association of chronic kidney disease to severe COVID-19 across 4 early studies. In addition, it is becoming apparent that COVID-19 can cause acute kidney injury (AKI) in COVID-19, and this confers a worse prognosis: a Chinese prospective cohort study (n=701) reported that 44% and 27% of COVID-19 patients had proteinuria and haematuria on admission, respectively, with 5.1% of this cohort developed AKI during their hospital stay (38). Importantly, this study also reported higher mortality from COVID-19 for those who had pre-existing kidney disease. As we learn more about AKI in COVID-19, it is becoming paramount to disentangle whether pre-existing renal disease predisposes patients to significant AKI in COVID-19, as one might expect. While we did find a significantly increased risk of attending hospital for those with renal disease, relatively few reported this condition in our cohort (Table 2), which may represent a problem with self-reporting bias. More research is needed to examine the effect of pre-existing renal disease on COVID-19 infection.

Despite the literature consistently showing males to be at higher risk for more severe COVID-19 (7,39,40), we did not find gender assigned at birth to be a predictor of attending a hospital in this study. However, male gender was associated with a substantially greater risk of requiring respiratory support, in all groups. Men have been shown to be less likely to utilise medical services than women (41) and large studies have consistently shown women to report greater numbers of physical symptoms than men (41,42). Such health behaviours may lead to men having a higher threshold for visiting the hospital with COVID-19 than women, along perhaps with less awareness of early symptoms. This may result in males being more unwell when they do seek medical help and contribute somewhat to the stark difference in mortality between genders (43–45).

Our sample size is the largest reported to date, adding significant strength to many predictors of hospitalisation or severe COVID-19 that have been identified in smaller cohort studies to date. We hope that our data will guide clinicians to protect their at-risk patient cohorts and policymakers to consider these vulnerable groups when planning and allocating resource, both during this pandemic and for future similar eventualities. Clearly many questions remain, and the mechanisms by which a number of these predictors of hospitalisation are unclear; much research is needed to define these questions, and quickly.

Our study has a number of limitations. First, all the data collected is self-reported, and questions on comorbidities were somewhat simplified to ease reporting at large scale on an app. Both symptoms and test results may be subject to reporting bias. Secondly, the sampling using an app will under-represent individuals without smartphone devices, including older participants, and is likely to under-represent those severely affected by the disease. Additionally, we are reporting visits, rather than admissions, to hospital; we do not know how many visits resulted in an inpatient stay. While we believe that our sampling provides useful information about the risk of most symptomatic infection, it will not provide insight into very severe disease as the most unwell patients may not record hospitalisation due to incapacitation or even death. Additionally, COVID-19 diagnoses, where confirmed by testing, were likely to be based on RT-PCR which is thought to be between 66-80% sensitive for a single test (46,47). Another important caveat of note is that the individuals on which the model was trained are highly selected because COVID-19 tests are not performed at random (48). The participants were tested because they either displayed severe symptoms, were in contact with COVID-19 positive individuals, were healthcare workers or had travelled to an area of particular risk. Additionally, the app captured whether participants had been diagnosed with COVID-19 but did not specifically ask when. Given that symptoms are recorded at the time of data entry, it is possible that some individuals may no longer have been symptomatic from the virus.

Conclusion

The key predictors of hospitalisation in the context of COVID-19 affect many in our society. Lung disease, diabetes, heart disease, advanced age and increased BMI were associated with risk of hospitalisation with COVID. Careful planning of the use of immune testing and contact tracing could be particularly relevant for people in these higher-risk groups. This may help minimise the risk that patients living with comorbidities and older people are disproportionately isolated in the months to come. Finally, the presence of these factors should be regarded as an important factor in future risk stratification models for COVID-19. It is of utmost importance for governments and the scientific and medical communities to work together to find evidence-based means of protecting those most vulnerable from COVID-19 in a way which minimises their risk of economic, mental and social implications of isolation.

Ethics: In the UK, app Ethics has been approved by KCL ethics Committee REMAS ID 18210, review reference LRS-19/20-18210. In the US, the informed consent process was approved by the Partners Human Research Committee (Protocol 2020P000909). All subscribers provided informed consent before submitting responses. The study was registered with clinicaltrials.gov as NCT04331509.

Data sharing: Data used in this study is available to bona fide researchers through UK Health Data Research using the following link <https://healthdatagateway.org/detail/9b604483-9cdc-41b2-b82c-14ee3dd705f6>

Declaration of Interests:

Zoe Global Limited developed the app with the guidance of clinicians. RD, JW, JCP, SG and JLduC work for Zoe Global Limited and TDS is a consultant to Zoe Global Limited.

Funding: Zoe Global Limited developed the app with the guidance of clinicians. Investigators received support from the Wellcome Trust, the MRC/BHF, Alzheimer's Society, EU, NIHR, CDRF, and the NIHR-funded BioResource, Clinical Research Facility and BRC based at G8TT NHS Foundation Trust in partnership with KCL. ATC was supported in this work through a Stuart and Suzanne Steele MGH Research Scholar Award.

Contribution Statement: MNL, KAL, and CHS carried out the analyses and wrote the original draft. MNL, KAL, CHS, TV, MCJ, CM, RCEB, LHN, DAD, AV, MF, MM, MSG, BM, JESM, XZ, MF, TDS, SO, CJS and ATC contributed to conceptualisation, data curation, investigation, methodology, validation and reviewing and editing the draft. SG, JLdC, JC, RD, and JW contributed to the data curation, methodology, resources and software. SO and CJS supervised the project.

Dissemination Declaration: dissemination of results to all app users is not possible, however results will be shared on our website <https://covid.joinzoe.com/>, and via our social media, as well as through national and international media channels.

Figures and Tables

Study	Participants	Study Methods	BMI Results	Odds ratios/P values
Peng et al. (49) China	112 COVID-19 patients with cardiovascular admitted to hospital Critical = 16 Non-critical = 96 Survivors = 95 Non-survivors = 17	<ul style="list-style-type: none"> Single-centre, retrospective, observational data Patients divided into critical group and general group according to the severity of the disease and then further divided into non-survivor group and survivor group 	<ul style="list-style-type: none"> BMI of the critical group was significantly higher than that of the general group 25.5 (CI 23.0 - 27.5) kg/m² vs. 22.0 (CI 20.0 - 24.0) kg/m² Among the non-survivors, there were 88.24% of patients had a BMI > 25 kg/m², which was significantly higher than that of survivors (18.95% (18/95)) 	<ul style="list-style-type: none"> Overweight vs healthy weight in critical group: P value =0.003 Overweight vs healthy weight in non-survivor group: P value <0.001
Li et al. (20) China	17 COVID-19 patients 5 = discharged 12= "quarantined" in hospital	<ul style="list-style-type: none"> Single-centre retrospective data Comorbidities compared between discharged and quarantined patients 	<ul style="list-style-type: none"> BMI amongst discharged group (24.1 ± 3.5) vs quarantined group (25.3 ± 5.2) 	<ul style="list-style-type: none"> BMI: P value 0.653

Table 3. Studies which reported on BMI in the context of COVID-19 infection

Study	Participants	Study Methods	Lung disease reported	Odds ratios/P values (where available)
Yang et al. (7) China	52 critically ill adult patients with SARS-CoV-2 pneumonia who were admitted to ICU Non-survivors = 32 Survivors = 20	<ul style="list-style-type: none"> Single centre retrospective observational study Data were compared between survivors and non-survivors The primary outcome was 28-day mortality 	<ul style="list-style-type: none"> 6% of non-survivors had "chronic pulmonary disease" vs 10% of survivors 	Not reported
Guan et al. (5) China	1099 patients with confirmed COVID-19 Severe disease = 173 patients Non-severe disease = 926 patients	<ul style="list-style-type: none"> Data collected from 552 hospitals Retrospective observational study Data compared between severe and non-severe disease (severe = death or requirement for ICU admission/mechanical ventilation) 	<ul style="list-style-type: none"> 0.6% of non-severe cases had COPD vs 3.5% of severe cases 	Not reported
Zhang et al. (8) China	140 patients admitted patients with COVID-19 Severe disease = 82 patients Non-severe disease = 58 patients	<ul style="list-style-type: none"> Single centre retrospective study Data compared between severe and non-severe disease (severe = one of the following criteria met: respiratory rate ≥30, O₂ saturations ≤93% at rest and oxygenation index ≤300 mm Hg) 	<ul style="list-style-type: none"> 3.4% of severe disease patients had COPD vs 0% of non-severe cases 3.4% of severe disease patients had pulmonary TB vs 0% of non-severe cases 	COPD vs not present: p value 0.17 TB vs not present: p value 0.17
Zhou et al. (9) China	191 patients admitted with COVID-19 Survivors = 137 patients Non-survivors = 54 died in hospital	<ul style="list-style-type: none"> Multicentre retrospective study Data compared between survivors and non-survivors Univariable and multivariable logistic regression methods to explore the risk factors associated with in-hospital death. 	<ul style="list-style-type: none"> 7% of non-survivors had COPD vs 1% of survivors 	COPD vs not present: Univariable OR 5.4 (0.96-30.4) with p value 0.056
CDC COVID-19 Response Team (50) USA	United States Comorbidity data available on 7,162 (5.8%) for whom COVID-19 reported	<ul style="list-style-type: none"> US States and territories reporting data directly to Center for Disease Prevention and Control Comorbidity data divided into non-hospitalised, hospitalised non-ICU and ICU "Chronic lung disease" defined as asthma, COPD and emphysema 	<ul style="list-style-type: none"> Of patients needing ICU care, 21% had chronic lung disease Of hospitalised non-ICU patients, 15% had chronic lung disease Of non-hospitalised patients, 7% had chronic lung disease 	Not reported

Instituto Superiore Di Sanita (44) Italy	Italian Comorbidity data available on 481 patients who died in hospital with COVID-19 Non-survivors = 481	<ul style="list-style-type: none"> Retrospective, observational data No data on patients who survived 	<ul style="list-style-type: none"> 13.7% of non-survivors had COPD 	Not reported
Huang et al. (45) China	41 admitted hospital patients identified as having lab-confirmed COVID-19 ICU care = 13 Non-ICU care = 28	<ul style="list-style-type: none"> Single-centre prospective data collection Outcomes compared between patients who had been admitted to the ICU and those who had not 	<ul style="list-style-type: none"> 8% of ICU care patients had COPD vs 0% of non-ICU patients 	COPD vs not present: P value 0.14
Chen et al. (51) China	99 patients with COVID-19 pneumonia	<ul style="list-style-type: none"> Single-centre retrospective data 	<ul style="list-style-type: none"> 1% had respiratory system disease 	Not reported
Liu et al. (52) China	12 patients with COVID-19	<ul style="list-style-type: none"> Single-centre retrospective data 	<ul style="list-style-type: none"> 1 of 12 (8.3%) patients had chronic lung disease 	Not reported
Wang et al. (53) China	138 consecutive hospitalised patients with confirmed COVID-19 ICU = 36 Non-ICU = 102	<ul style="list-style-type: none"> Retrospective, single-centre case series Divided into ICU and non-ICU for comparative purposes 	<ul style="list-style-type: none"> 8.3% of ICU patients had COPD vs 1% of non-ICU patients 	COPD vs not present: P value 0.054
Wu et al. (54) China	80 patients with lab-confirmed COVID-19	<ul style="list-style-type: none"> Retrospective, multicentre study 	<ul style="list-style-type: none"> 1.25% had a respiratory system disease 	Not reported
Liu et al. (55) China	137 COVID-19 infected patients	<ul style="list-style-type: none"> Retrospective, multicentre study 	<ul style="list-style-type: none"> 1.5% had COPD 	Not reported
Yang et al. (4) China	8 studies [including 4 that report respiratory disease and are all included in this table (5,8,45,53)] were included in the meta-analysis, including 46248 patients with COVID-19	<ul style="list-style-type: none"> Meta-analysis was to assess the prevalence of comorbidities amongst COVID-19 patients and the risk of underlying diseases in severe patients compared to non-severe patients. 	<ul style="list-style-type: none"> “Respiratory system disease” was found to be the 4th most prevalent comorbidity amongst patients 	Odds ratio 2±0, (95% CI 1-3%)
Xu et al. (56) China	62 patients admitted with COVID-19	<ul style="list-style-type: none"> Retrospective, multicentre study 	<ul style="list-style-type: none"> 2% had COPD 	Not reported
Emami et al. (6)	Data of 76993 patients presented in 10 articles (including 7 that report respiratory disease and are all included individually in this table(5,45,53-55,57)) with COVID-19	<ul style="list-style-type: none"> Meta-analysis to assess the prevalence of comorbidities amongst COVID-19 patients 	<ul style="list-style-type: none"> The incidence rate of COPD in hospitalised COVID-19 patients was 0.95% (95% CI: 0.43%-1.61%) 	N/a

Booth et al. (58) Canada	144 adults admitted to 10 hospitals in Toronto, Canada with a diagnosis of suspected/probable SARS in March – April 2003	<ul style="list-style-type: none"> Retrospective, observational data Patients not divided into severe, non-severe etc. 	<ul style="list-style-type: none"> 1% of patients had COPD 	Not reported
Chen et al. (57) Taiwan	67 patients admitted with SARS in March – July 2003 Non-ARDS = 34 ARDS = 33	<ul style="list-style-type: none"> Single-centre, retrospective, observational data Patients grouped according to whether or not ARDS developed during the clinical course of SARS 	<ul style="list-style-type: none"> 2.9% of non-ARDS patients had COPD or asthma vs 9.1% of ARDS patients 	COPD/asthma vs not present: P value 0.356
Ko et al.(33) China	52 patients admitted with SARS in 2003 Survivors = 32 Non-survivors = 20	<ul style="list-style-type: none"> Single-centre, retrospective, observational data Patients grouped according to survival 	<ul style="list-style-type: none"> 45% non-survivors had “comorbid lung illnesses” vs 0.7% of survivors 	“Comorbid lung illnesses” vs not present: P value 0.001
Lee et al. (59) Hong Kong	138 cases of suspected SARS in March 2003	<ul style="list-style-type: none"> Single-centre retrospective, observational data 	2% had “chronic pulmonary disease”	Not reported

Table 4. Studies which reported on pre-existing lung disease in the context of COVID-19 infection

References:

1. Drew DA, Nguyen LH, Steves CJ, Wolf J, Spector TD, Chan AT, et al. Rapid implementation of mobile technology for real-time epidemiology of COVID-19. *medRxiv*. 2020 Apr 6;2020.04.02.20051334.
2. Menni C, Valdes A, Freydin MB, Ganesh S, Moustafa JE-S, Visconti A, et al. Loss of smell and taste in combination with other symptoms is a strong predictor of COVID-19 infection. *medRxiv*. 2020 Apr 7;2020.04.05.20048421.
3. Center for Disease Control. https://www.cdc.gov/healthyweight/assessing/bmi/adult_bmi/index.html.
4. Yang J, Zheng Y, Gou X, Pu K, Chen Z, Guo Q, et al. Prevalence of comorbidities in the novel Wuhan coronavirus (COVID-19) infection: a systematic review and meta-analysis. *Int J Infect Dis [Internet]*. 2020 [cited 2020 Apr 12]; Available from: <https://doi.org/10.1016/j.ijid.2020.03.017>
5. Guan W, Ni Z, Hu Y, Liang W, Ou C, He J, et al. Clinical Characteristics of Coronavirus Disease 2019 in China. *N Engl J Med*. 2020/02/29. 2020 Feb 28;
6. Emami A, Javanmardi F, Pirbonyeh N, Akbari A. Prevalence of Underlying Diseases in Hospitalized Patients with COVID-19: a Systematic Review and Meta-Analysis. *Arch Acad Emerg Med [Internet]*. 2020 [cited 2020 Apr 12];8(1):e35–e35. Available from: <http://journals.sbmu.ac.ir/aaem>
7. Yang X, Yu Y, Xu J, Shu H, Xia A, Liu H, et al. Clinical course and outcomes of critically ill patients with SARS-CoV-2 pneumonia in Wuhan, China: a single-centered, retrospective, observational study. *Lancet Respir Med [Internet]*. 2020 [cited 2020 Apr 12]; Available from: <https://doi.org/10.1016/S2213-2600>
8. Zhang J jin, Dong X, Cao Y yuan, Yuan Y dong, Yang Y bin, Yan Y qin, et al. Clinical characteristics of 140 patients infected with SARS-CoV-2 in Wuhan, China. *Allergy [Internet]*. 2020/02/23. 2020 Feb 27 [cited 2020 Apr 12];(February):1–12. Available from: <https://onlinelibrary.wiley.com/doi/abs/10.1111/all.14238>
9. Zhou F, Yu T, Du R, Fan G, Liu Y, Liu Z, et al. Clinical course and risk factors for mortality of adult inpatients with COVID-19 in Wuhan, China: a retrospective cohort study. *Lancet*. 2020/03/15. 2020 Mar 28;395(10229):1054–62.
10. Milner JJ, Beck MA. The impact of obesity on the immune response to infection. *Proc Nutr Soc*. 2012;71(1):298–306.
11. Dietz W, Santos-Burgoa C. Obesity and its Implications for COVID-19 Mortality. *Obesity (Silver Spring) [Internet]*. 2020;0–2. Available from: <http://www.ncbi.nlm.nih.gov/pubmed/32237206>
12. Kwong JC, Campitelli MA, Rosella LC. Obesity and respiratory hospitalizations during influenza seasons in Ontario, Canada: a cohort study. *Clin Infect Dis*. 2011/08/17. 2011;53(5):413–21.
13. World Health Organisation. Obesity and overweight [Internet]. 2016 [cited 2020 Apr 12]. Available from: <https://www.who.int/news-room/fact-sheets/detail/obesity-and-overweight>
14. Djalalinia S, Qorbani M, Peykari N, Kelishadi R. Health impacts of obesity. *Pakistan J Med Sci*. 2015 Jan 1;31(1):239–42.
15. Falagas ME, Kompoti M. Obesity and infection. Vol. 6, *Lancet Infectious Diseases*. Elsevier; 2006. p. 438–46.
16. De Jong A, Verzilli D, Jaber S. ARDS in Obese Patients: Specificities and Management [Internet]. Vol. 23, *Critical Care*. BioMed Central Ltd.; 2019 [cited 2020 Apr 12]. p. 74. Available from: <https://ccforum.biomedcentral.com/articles/10.1186/s13054-019-2374-0>
17. Niccoli T, Partridge L. Ageing as a risk factor for disease. *Curr Biol*. 2012 Sep 11;22(17):R741–52.
18. Center for Disease Control. Estimated Influenza Illnesses, Medical visits, Hospitalizations, and Deaths in the United States — 2018–2019 influenza season [Internet]. [cited 2020 Apr 18]. Available from: <https://www.cdc.gov/flu/about/burden/2018-2019.html>
19. Liu K, Chen Y, Lin R, Han K. Clinical features of COVID-19 in elderly patients: A comparison with young and middle-aged patients. *J Infect [Internet]*. 2020 [cited 2020 Apr 18];15:30. Available from: <https://doi.org/10.1016/j.jinf.2020.03.005>
20. Li J, Li S, Cai Y, Liu Q, Li X, Zeng Z, et al. Epidemiological and Clinical Characteristics of 17 Hospitalized Patients with 2019 Novel Coronavirus Infections Outside Wuhan, China. *medRxiv [Internet]*. 2020 Feb 12 [cited 2020 Apr 18];2020.02.11.20022053. Available from: <http://medrxiv.org/content/early/2020/02/12/2020.02.11.20022053.abstract>
21. Aw D, Silva AB, Palmer DB. Immunosenescence: Emerging challenges for an ageing population. Vol. 120, *Immunology*. Wiley-Blackwell; 2007. p. 435–46.
22. Kawai K, Gebremeskel BG, Acosta CJ. Systematic review of incidence and complications of herpes zoster: Towards a global perspective [Internet]. Vol. 4, *BMJ Open*. BMJ Publishing Group; 2014 [cited 2020 Apr 18]. p. e004833. Available from: <http://www.ncbi.nlm.nih.gov/pubmed/24916088>
23. Trintinaglia L, Bandinelli LP, Grassi-Oliveira R, Petersen LE, Anzolin M, Correa BL, et al. Features of immunosenescence in women newly diagnosed with breast cancer. *Front Immunol*. 2018 Jul 16;9(JUL).
24. Poland GA, Ovsyannikova IG, Kennedy RB. Personalized vaccinology: A review. *Vaccine*. 2018 Aug 28;36(36):5350–7.
25. Weinberger B. Vaccines for the elderly: Current use and future challenges. Vol. 15, *Immunity and Ageing*. BioMed Central Ltd.; 2018.
26. Ferrucci L, Fabbri E. Inflammageing: chronic inflammation in ageing, cardiovascular disease, and frailty *HHS Public Access*. 2018;
27. Pollock RD, Carter S, Velloso CP, Duggal NA, Lord JM, Lazarus NR, et al. An investigation into the relationship between age and physiological function in highly active older adults. *J Physiol*. 2015;593(3):657–80.
28. BBC. Coronavirus: Vulnerable people could need to “cocoon” - BBC News [Internet]. 2020 [cited 2020 Apr 18]. Available from: <https://www.bbc.co.uk/news/world-europe-51931602>
29. Age UK. Social distancing, shielding, and self-isolation [Internet]. 2020 [cited 2020 Apr 18]. Available from: <https://www.ageuk.org.uk/scotland/information-advice/health-and-wellbeing/coronavirus/social-distancing-shielding-and-self-isolation/>
30. Lemanske RF, Gern JE, Busse WW, Lemanske RF, Gern JE. Role of viral respiratory infections in asthma and asthma exacerbations [Internet]. Vol. 376, *www.thelancet.com*. 2010 [cited 2020 Apr 23]. Available from: www.thelancet.com
31. Sethi S. Infection as a comorbidity of COPD. Vol. 35, *European Respiratory Journal*. European Respiratory Society; 2010. p. 1209–15.
32. Halpin DMG, Faner R, Sibila O, Badia JR, Agusti A. Do chronic respiratory diseases or their treatment affect the risk of SARS-CoV-2 infection? *Lancet Respir Med [Internet]*. Available from: [https://doi.org/10.1016/S2213-2600\(20\)30167-3](https://doi.org/10.1016/S2213-2600(20)30167-3)
33. Ko SF, Lee TY, Huang CC, Cheng YF, Ng SH, Kuo YL, et al. Severe acute respiratory syndrome: prognostic implications of chest radiographic findings in 52 patients. *Radiology*. 2004/07/27. 2004;233(1):173–81.
34. World Health Organisation. CHRONIC RESPIRATORY DISEASES 4. Chronic Disease Epidemics.
35. Li J, Wang X, Chen J, Zuo X, Zhang H, Deng A. COVID-19 infection may cause ketosis and ketoacidosis. *Diabetes, Obes Metab [Internet]*. 2020 Apr 20 [cited 2020 Apr 23];dom.14057. Available from: <https://onlinelibrary.wiley.com/doi/abs/10.1111/dom.14057>
36. Hussain A, Bhowmik B, Cristina do Vale Moreira N. COVID-19 and Diabetes: Knowledge in Progress. *Diabetes Res Clin Pract*

- [Internet]. 2020 Apr 9 [cited 2020 Apr 20];108142. Available from: <http://www.ncbi.nlm.nih.gov/pubmed/32278764>
37. Henry BM, Lippi G. Chronic kidney disease is associated with severe coronavirus disease 2019 (COVID-19) infection. *International Urology and Nephrology*. Springer; 2020. p. 1–2.
38. Cheng Y, Luo R, Wang K, Zhang M, Wang Z, Dong L, et al. Kidney disease is associated with in-hospital death of patients with COVID-19. *Kidney Int*. 2020 Mar 20;
39. Guan W, Ni Z, Hu Y, Liang W, Ou C, He J, et al. Clinical Characteristics of Coronavirus Disease 2019 in China. *N Engl J Med*. 2020 Feb 28;
40. Zhang J, Dong X, Cao Y, Yuan Y, Yang Y, Yan Y, et al. Clinical characteristics of 140 patients infected with SARS-CoV-2 in Wuhan, China. *Allergy [Internet]*. 2020 Feb 27 [cited 2020 Apr 12];all.14238. Available from: <https://onlinelibrary.wiley.com/doi/abs/10.1111/all.14238>
41. Ladwig KH, Marten-Mittag B, Formanek B, Dammann G. Gender differences of symptom reporting and medical health care utilization in the German population. *Eur J Epidemiol*. 2000;16(6):511–8.
42. Kroenke K, Spitzer RL. Gender differences in the reporting of physical and somatoform symptoms. *Psychosom Med*. 1998;60(2):150–5.
43. Zhou F, Yu T, Du R, Fan G, Liu Y, Liu Z, et al. Clinical course and risk factors for mortality of adult inpatients with COVID-19 in Wuhan, China: a retrospective cohort study. *Lancet*. 2020 Mar 28;395(10229):1054–62.
44. COVID-19 Surveillance Group. Characteristics of COVID-19 patients dying in Italy: report based on available data on March 20th, 2020. Rome, Italy: Istituto Superiore Di Sanita; 2020.
45. Huang C, Wang Y, Li X, Ren L, Zhao J, Hu Y, et al. Clinical features of patients infected with 2019 novel coronavirus in Wuhan, China. *Lancet*. 2020/01/28. 2020 Feb 15;395(10223):497–506.
46. Ai T, Yang Z, Hou H, Zhan C, Chen C, Lv W, et al. Correlation of Chest CT and RT-PCR Testing in Coronavirus Disease 2019 (COVID-19) in China: A Report of 1014 Cases. *Radiology*. 2020/02/27. 2020;200642.
47. Kanne JP, Little BP, Chung JH, Elicker BM, Ketani LH. Essentials for Radiologists on COVID-19: An Update-Radiology Scientific Expert Panel. *Radiology*. 2020/02/28. 2020;200527.
48. COVID-19: investigation and initial clinical management of possible cases - GOV.UK [Internet]. [cited 2020 Apr 22]. Available from: <https://www.gov.uk/government/publications/wuhan-novel-coronavirus-initial-investigation-of-possible-cases/investigation-and-initial-clinical-management-of-possible-cases-of-wuhan-novel-coronavirus-wn-cov-infection#interim-definition-possible-cases>
49. Peng YD, Meng K, Guan HQ, Leng L, Zhu RR, Wang BY, et al. Clinical characteristics and outcomes of 112 cardiovascular disease patients infected by 2019-nCoV. *Zhonghua Xin Xue Guan Bing Za Zhi [Internet]*. 2020 Mar 2 [cited 2020 Apr 10];48(0):E004. Available from: <http://www.ncbi.nlm.nih.gov/pubmed/32120458>
50. Chow N, Fleming-Dutra K, Gierke R, Hall A, Hughes M, Pilishvili T, et al. Preliminary Estimates of the Prevalence of Selected Underlying Health Conditions Among Patients with Coronavirus Disease 2019 — United States, February 12–March 28, 2020. *MMWR Morb Mortal Wkly Rep [Internet]*. 2020 Apr 3 [cited 2020 Apr 22];69(13):382–6. Available from: http://www.cdc.gov/mmwr/volumes/69/wr/mm6913e2.htm?s_cid=mm6913e2_w
51. Chen N, Zhou M, Dong X, Qu J, Gong F, Han Y, et al. Epidemiological and clinical characteristics of 99 cases of 2019 novel coronavirus pneumonia in Wuhan, China: a descriptive study. *Lancet*. 2020 Feb 15;395(10223):507–13.
52. Liu Y, Yang Y, Zhang C, Huang F, Wang F, Yuan J, et al. Clinical and biochemical indexes from 2019-nCoV infected patients linked to viral loads and lung injury. *Sci China Life Sci*. 2020 Mar 1;63(3):364–74.
53. Wang D, Hu B, Hu C, Zhu F, Liu X, Zhang J, et al. Clinical Characteristics of 138 Hospitalized Patients With 2019 Novel Coronavirus-Infected Pneumonia in Wuhan, China. *Jama*. 2020/02/08. 2020;
54. Wu J, Liu J, Zhao X, Liu C, Wang W, Wang D, et al. Clinical Characteristics of Imported Cases of Coronavirus Disease 2019 (COVID-19) in Jiangsu Province: A Multicenter Descriptive Study. *Clin Infect Dis [Internet]*. 2020; Available from: <https://doi.org/10.1093/cid/ciaa199>
55. Liu K, Fang YY, Deng Y, Liu W, Wang MF, Ma JP, et al. Clinical characteristics of novel coronavirus cases in tertiary hospitals in Hubei Province. *Chin Med J*. 2020/02/12. 2020;
56. Xu X-W, Wu X-X, Jiang X-G, Xu K-J, Ying L-J, Ma C-L, et al. Clinical findings in a group of patients infected with the 2019 novel coronavirus (SARS-Cov-2) outside of Wuhan, China: retrospective case series.
57. Chen CY, Lee CH, Liu CY, Wang JH, Wang LM, Perng RP. Clinical features and outcomes of severe acute respiratory syndrome and predictive factors for acute respiratory distress syndrome. *J Chin Med Assoc*. 2005/03/04. 2005;68(1):4–10.
58. Booth CM, Matukas LM, Tomlinson GA, Rachlis AR, Rose DB, Dwosh HA, et al. Clinical features and short-term outcomes of 144 patients with SARS in the greater Toronto area. *Jama*. 2003/05/08. 2003;289(21):2801–9.
59. Lee N, Hui D, Wu A, Chan P, Cameron P, Joynt GM, et al. A major outbreak of severe acute respiratory syndrome in Hong Kong. *N Engl J Med*. 2003/04/16. 2003;348(20):1986–94.