

COVID-19 Epidemic Analysis using Machine Learning and Deep Learning Algorithms

Narinder Singh Punj · Sanjay Kumar
Sonbhadra · Sonali Agarwal

Abstract The catastrophic outbreak of Severe Acute Respiratory Syndrome - Coronavirus (SARS-CoV-2) also known as COVID-2019 has brought the worldwide threat to the living society. The whole world is putting incredible efforts to fight against the spread of this deadly disease in terms of infrastructure, finance, data sources, protective gears, life-risk treatments and several other resources. The artificial intelligence researchers are focusing their expertise knowledge to develop mathematical models for analyzing this epidemic situation using nationwide shared data. To contribute towards the well-being of living society, this article proposes to utilize the machine learning and deep learning models with the aim for understanding its everyday exponential behaviour along with the prediction of future reachability of the COVID-2019 across the nations by utilizing the real-time information from the Johns Hopkins dashboard.

Keywords Coronavirus · Machine learning · Deep learning · Prediction

Narinder Singh Punj
IIIT Allahabad, Prayagraj, India, 211015
Tel.: +91-7018466740
E-mail: pse2017002@iiita.ac.in

Sanjay Kumar Sonbhadra
IIIT Allahabad, Prayagraj, India, 211015
Tel.: +91-9827873773
E-mail: rsi2017502@iiita.ac.in

Sonali Agarwal
IIIT Allahabad, Prayagraj, India, 211015
Tel.: +91-9415647042
E-mail: sonali@iiita.ac.in

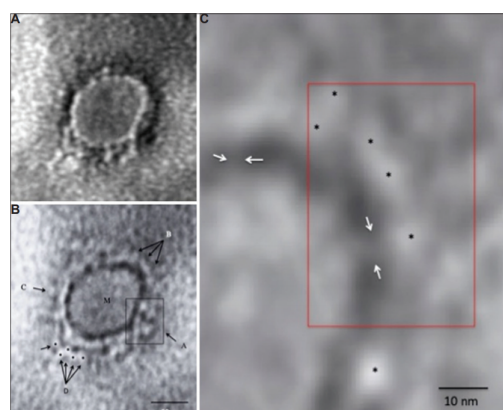


Fig. 1 Electron microscopy imaging of COVID-19 representing morphological features at varying magnification levels [4].

1 Introduction

Coronaviruses are a large family of viruses that can cause severe illness to the human being. The first known severe epidemic is Severe Acute Respiratory Syndrome (SARS) occurred in 2003, whereas the second outbreak of severe illness began in 2012 in Saudi Arabia with the Middle East Respiratory Syndrome (MERS). The current outbreak of illness due to coronavirus is reported in late December 2019. This new virus is very contagious and has quickly spread globally. On January 30, 2020, the World Health Organization (WHO) declared this outbreak a Public Health Emergency of International Concern (PHEIC) as it had spread to 18 countries. On Feb 11, 2020, WHO named this “COVID-19”. On March 11, as the number of COVID-19 cases has increased thirteen times apart from China with more than 118,000 cases in 114 countries and over 4,000 deaths, WHO declared this a pandemic.

As the outbreak of the COVID-19 has become a worldwide pandemic, the real-time analyses of epidemiological data are needed to prepare the society with better action plans against the disease. Since the birth of novel COVID-19 [1], the world is restlessly fighting with its cause. As of April 1, 2020, based on the globally shared live data by the Johns Hopkins dashboard, worldwide there are 932,605 confirmed cases, out of which 193,177 are recovered and 46,809 lost their lives [2]. COVID-19 belongs to the family of the SARS-CoV and MERS-CoV, where it begins with the initial level symptoms of the common cold to severe level of respiratory diseases causing difficulty in breathing, tiredness, fever, and dry cough [3]. Prasad et al. [4] observed that the identification of the virus can be improved by imaging using immunoelectron microscopy techniques [5]. Figure 1 shows the typical structure of COVID-19 virus, from the throat swab of the first Indian laboratory-confirmed case, captured using sample electron microscopy imaging. Till date, detailed morphology and ultrastructure of this virus remain incompletely understood, and there are no

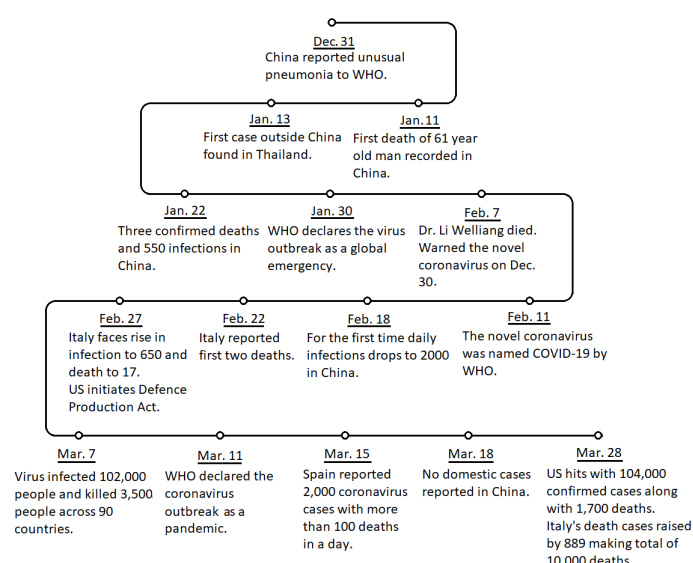


Fig. 2 Timeline of COVID-19 across the nations.

specific vaccines or treatments for COVID-19. However, many ongoing clinical trials are evaluating potential treatments.

1.1 COVID-19 transmission stages

As per the WHO reports [5], the pandemic situation is classified into four stages. The first stage begins with the cases reported for the people who travelled in already affected regions, whereas in the second stage, cases are reported locally among family, friends and others who came into contact with the person arriving from the affected regions. At this point the affected people are traceable. Later, the third stage makes the situation even worse as the transmission source becomes untraceable and spreads across the individuals who neither have any travel history nor came into contact with the affected person. This situation demands immediate lockdown across the nation to reduce the social contacts among individuals and control the rate of transmission. Figure 2, presents the outbreak of COVID-19 across the nations with the high number of confirmed cases such as US, Italy, Spain, and China based on the WHO reports [3], whereas figure 3 illustrates the rising characteristic of the number of confirmed, death, and recovered cases in these nations between the period January 22, 2020, to April 1, 2020, taken from Johns Hopkins live dashboard. The worst of all, stage 4 beings when the transmission becomes endemic and uncontrollable. Figure 4 presents the complete stages of the COVID-19 epidemic. Until now, several countries have entered stage 4. China is the first nation that experienced the stage 4 of the COVID-19 transmission. Though,

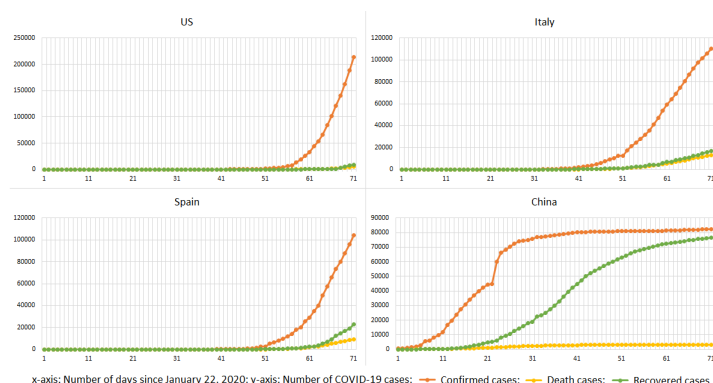


Fig. 3 Epidemic status of the COVID-19 across nations having the highest number of confirmed cases since January 22, 2020.

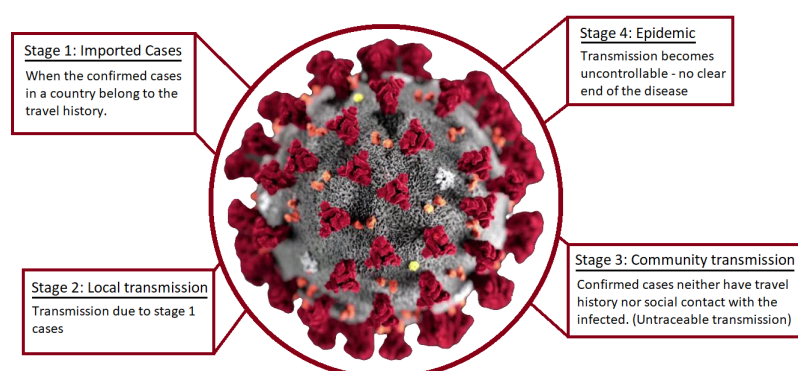


Fig. 4 COVID-19: complete transmission stages.

it is claimed that the origin of the virus is Wuhan, China [6]; it affects the other developed countries (USA, Italy, Spain, Britain, etc.). These countries are now in stage 4 of the transmission and facing more number of infections and deaths compared to China. In the case of China, it is observed that exponential growth of the confirmed cases reaches the saturation stage where the number of cases stopped growing. This follows from the fact that the number of susceptible people, which are exposed to virus, are dramatically reduced. This was made possible due to the reduced social contact among people by segregating the infected individuals in quarantine and a complete lockdown period was initiated by the Chinese government, thereby reducing the possibility of further spread.

Machine learning algorithms play an important role in epidemic analysis and forecasting [7], [8]. In the presence of massive epidemic data, the machine learning techniques help to find the epidemic patterns so that the early action can be planned to stop the spread of the virus. In this research, machine learn-

ing and deep learning models are used to observe everyday behaviour along with the prediction of future reachability of the COVID-2019 across the nation by utilizing the real-time information from the Johns Hopkins dashboard.

Rest of the paper is organised as follows: section 2 contains a brief discussion on existing machine learning based approaches, whereas section 3 talks about the dataset used for experiments. Epidemic analysis and experimental strategy are discussed in section 4 and 5 respectively, whereas results are discussed in section 6. Concluding remarks and future work are discussed in section 6.

2 Related work

Since the last decade, digital technologies are playing critical roles in major health sector problems including disease prevention, the present worldwide health emergency also seeking technological support to tackle COVID-2019. In a paper, authors highlighted the possible applications of trending digital technologies such as internet of things (IoT), big-data analytics, artificial intelligence (AI), deep learning and blockchain technology to develop strategies for monitoring, detection and prevention of epidemic; and also to identify the impact of the epidemic to the healthcare sector [9]. In a research work proposed by Benvenuto et al. [10], authors proposed an autoregressive integrated moving average (ARIMA) model to predict the spread of COVID-2019. In this paper, the author forecasted the various parameters for the next 2 days based on the study about the prevalence and incidence of the COVID-2019. This research work also demonstrates the correlogram and ARIMA forecast graph for the epidemic incidence and prevalence.

Deb et al. [11] proposed a time series method to analyze incidence pattern and the estimated reproduction number of COVID-19 outbreak. They performed statistical analysis to explore the trends of the outbreak to highlight the present epidemiological stage of a region so that various policies can be identified to address COVID-19 pandemic in different countries cite11. As per the present situation, it is essential to understand the early spread patterns of the infection to plan and control the effective safety measures. In this direction, Kucharski et al. proposed a scientific model of critical SARS-CoV-2 transmission by using different datasets to study the COVID-19 outbreak inside and outside Wuhan. With this, they explored the possible spread of disease outbreak outside Wuhan [12].

Recently there are several studies conducted on the epidemiological outbreak of COVID-19 using exploratory data analysis (EDA) based on various available datasets. The studies mainly focus on the occurrence of confirmed, death, and recovered cases in Wuhan and the rest of the world to understand the suspected threats and subsequent planning of containment activities [13]. Lauer et al., in their research work raised the issue of the criticality of the incubation period for COVID-19. They studied 181 confirmed cases and identified that the incubation period may vary from 5 days to 14 days and based

on this better surveillance and control activities can be planned [14]. In recent research work, Singer analyzed data of 25 infected counties to follow short term predictions about the COVID 2019 outbreak. The research highlighted that the location-specific rate of disease spread follows either steady or explosive power-law growth with different scaling exponents. With this understanding, the authors analyzed the impact of lockdown in various parts of the world [15]. Based on the above literature, it is evident that sufficient work is available on exploratory data analysis to understand the existing trend of the epidemic but still there is a lot of scopes to develop and test efficient machine learning based prediction models so that proactive strategies could be identified to cater the immediate needs.

3 Dataset description

The day to day prevalence data of COVID-2019 from January 22, 2020, to April 1, 2020, were retrieved from the official repository of Johns Hopkins University. The dataset consists of daily case reports and daily time series summary tables. In the present study, we have taken time-series summary tables in CSV format having three tables for confirmed, death and recovered cases of COVID-2019 with six attributes i.e. province/state, country/region, last update, confirmed, death and recovered cases, where the update frequency of the dataset is once in a day [2]. Figure 5 presents the COVID-19 confirmed, recovered, and death cases distribution across the world since the time data was recorded. It is easy to observe the exponential growth of the spread which needs to be controlled.

4 Epidemic Analysis

The COVID-19 spread has brought the world under the brink of loss of human lives due to which it is of utmost importance to analyze the transmission growth at the earliest and forecast the forthcoming possibilities of the transmission. With this objective, state-of-the-art mathematical models are adopted based on machine learning such as support vector regression (SVR) [16] and polynomial regression (PR) [17], and deep learning regression models such as a standard deep neural network (DNN) and recurrent neural networks (RNN) using long short-term memory (LSTM) cells [18]. Machine learning and deep learning approaches are implemented using the python library “sklearn” and “keras” respectively, to predict the total number of confirmed, recovered, and death cases worldwide. The prediction will allow undertaking the necessary decisions based on transmission growth such as increasing the lockdown period, executing the sanitation procedure, providing the everyday resources, etc.

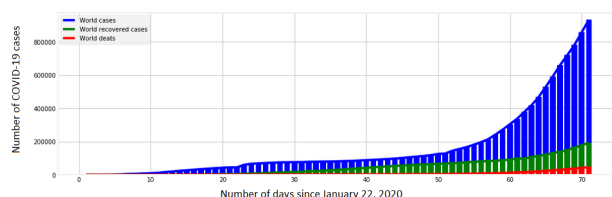


Fig. 5 Distribution of COVID-19 cases across the globe.

5 Training and testing

The regression approaches for epidemic analysis are trained and tested on real-time data [2] using the number of confirmed, recovered, and death cases as the label for the corresponding day. With extensive experiments, machine learning approaches are implemented with the polynomial kernel of degree 6 and other coefficient values as $\gamma=0.01$, $\epsilon=1$, and $C=0.1$. The standard DNN consists of a dense input layer with 128 neurons, three hidden dense layers with 256 neurons and output layer is consists of a single neuron whereas the RNN, consists of three stacks of LSTM layers having 64 neurons combined with 10% dropout to avoid the overfitting problem and final output layer with a single neuron. The mean squared error (MSE) is the most widely used objective function and root mean square error (RMSE) as a metric function for evaluating the regression models. The MSE loss can be computed by using equation 1.

$$L(y, \hat{y}) = \frac{1}{N} \sum_{i=0}^N (y - \hat{y})^2 \quad (1)$$

where y indicates the original value, \hat{y} indicates the predicted value, and N is the number of samples predicted.

Due to the limited availability of the data, the trained models are validated against the training data and then utilized to forecast the number of confirmed, recovered, and death cases for the next 10 days.

6 Results and discussion

The discussed machine learning and deep learning approaches output the possible number of cases for the next 10 days across the world. Figure 6 illustrates the predicted trend of the COVID-19 using SVR, PR, DNN, and LSTM with worldwide data. Table 1 indicates the RMSE score of the approaches computed against the available number of COVID-19 cases. It is also observed that training of LSTM model is heavily dependent on the deviation in the values, with the fact that larger the deviation more the time it takes to train. Hence, the number of cases were scaled using minmax scaler to fit the LSTM model and later the predicted cases were rescaled to the original range using invert

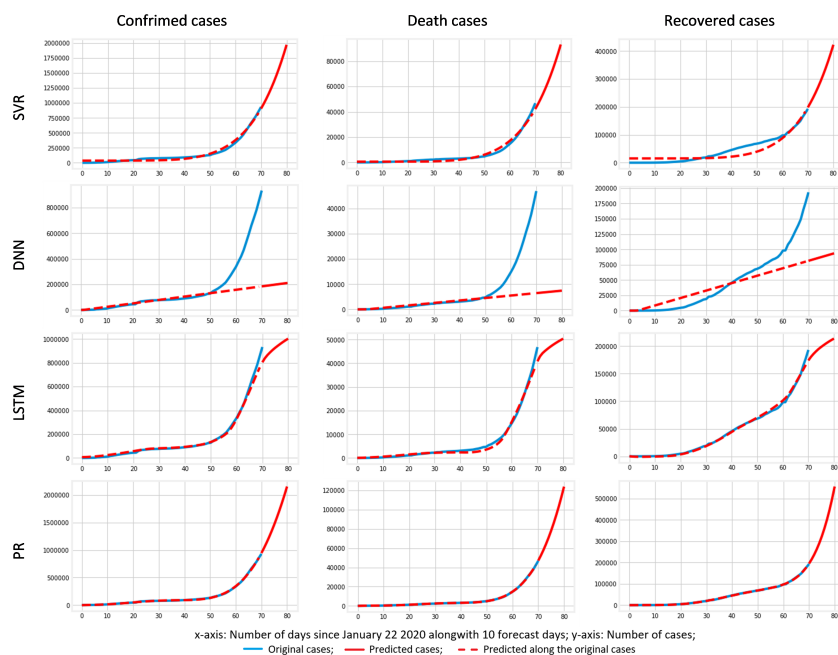


Fig. 6 COVID-19 worldwide epidemic analysis using SVR, DNN, LSTM, and PR.

minmax transform from “sklearn” python library. Among these approaches, the visual representation of the prediction from figure 6 and RMSE score as highlighted in table 1 confirms the PR approach as the best fit to follow the growing trend.

Table 1 Comparative results.

Model	RMSE			10-04-2020 (Forecast)		
	Confirmed	Deaths	Recovered	Confirmed	Deaths	Recovered
SVR	27456.47	1360.47	16762.15	1970860	93112	422740
DNN	163335.65	8554.55	25415.03	211213	7419	93476
LSTM	15647.64	1076.06	4092.01	1002543	50362	206916
PR	455.92	117.94	809.71	2156540	124021	557125

7 Conclusion

The world is under the grasp of SARS-CoV2 (COVID-19) virus. Early prediction of the transmission can help to take necessary actions. This article proposed to utilize the machine learning and deep learning models for epidemic analysis using data from Johns Hopkins dashboard. The results show that polynomial regression (PR) yielded a minimum root mean square error

(RMSE) score over other approaches in forecasting the COVID-19 transmission. However, if the spread follows the predicted trend of the PR model then it would lead to huge loss of lives as it presents the exponential growth of the transmission worldwide. As observed from China, this growth of the COVID-19 can be reduced and quenched by reducing the number of susceptible individuals from the infected individuals. This is achievable by becoming unsocial and following the lockdown initiative with discipline. The study can further be extended to utilize other machine learning and deep learning models.

Compliance with Ethical Standards

Conflict of Interest

The authors have no conflict of interest to declare.

Ethical approval

This article does not contain any studies with human participants or animals performed by any of the authors.

References

1. Stoecklin, Sibylle Bernard, Patrick Rolland, Yassoung Silue, Alexandra Mailles, Christine Campese, Anne Simondon, Matthieu Mechain et al. "First cases of coronavirus disease 2019 (COVID-19) in France: surveillance, investigations and control measures, January 2020." *Eurosurveillance* 25, no. 6 (2020)
2. Github repository. 2019 Novel Coronavirus COVID-19 (2019-nCoV) Data Repository by Johns Hopkins CSSE. Retrieved March 31, 2020 from <https://github.com/CSSEGISandData/COVID-19>.
3. WHO coronaviruses (COVID-19). Retrieved March 30, 2020 from <https://www.who.int/emergencies/diseases/novel-coronavirus-2019>.
4. Prasad, Sharda, Varsha Potdar, Sarah Cherian, Priya Abraham, and Atanu Basu. "Transmission electron microscopy imaging of SARS-CoV-2." *The Indian journal of medical research* (2020).
5. Leppard, Gary G. "Evaluation of electron microscope techniques for the description of aquatic colloids." In *Environmental particles*, pp. 231-289. CRC Press, 2019.
6. Jia, L., Li, K., Jiang, Y., Guo, X. (2020). Prediction and analysis of Coronavirus Disease 2019. arXiv preprint arXiv:2003.05447.
7. Kalipe, G., Gautham, V., Behera, R. K. (2018, December). Predicting malarial outbreak using Machine Learning and Deep Learning approach: A review and analysis. In 2018 International Conference on Information Technology (ICIT) (pp. 33-38). IEEE.
8. Singh, R., Singh, R., Bhatia, A. (2018). Sentiment analysis using Machine Learning technique to predict outbreaks and epidemics. *Int. J. Adv. Sci. Res.*, 3(2), 19-24.
9. Ting, Daniel Shu Wei, Lawrence Carin, Victor Dzau, and Tien Y. Wong. "Digital technology and COVID-19." *Nature Medicine* (2020): 1-3.
10. Benvenuto, Domenico, Marta Giovanetti, Lazzaro Vassallo, Silvia Angeletti, and Massimo Ciccozzi. "Application of the ARIMA model on the COVID-2019 epidemic dataset." *Data in brief* (2020): 105340.

11. Deb, Soudeep, and Manidipa Majumdar. "A time series method to analyze incidence pattern and estimate reproduction number of COVID-19." arXiv preprint arXiv:2003.10655 (2020).
12. Kucharski, Adam J., Timothy W. Russell, Charlie Diamond, Yang Liu, John Edmunds, Sebastian Funk, Rosalind M. Eggo et al. "Early dynamics of transmission and control of COVID-19: a mathematical modelling study." *The lancet infectious diseases* (2020).
13. Dey, Samrat Kumar, Md Mahbubur Rahman, Umme Raihan Siddiqi, and Arpita Howlader. "Analyzing the Epidemiological Outbreak of COVID-19: A Visual Exploratory Data Analysis (EDA) Approach." *Journal of Medical Virology* (2020).
14. Lauer, Stephen A., Kyra H. Grantz, Qifang Bi, Forrest K. Jones, Qulu Zheng, Hannah R. Meredith, Andrew S. Azman, Nicholas G. Reich, and Justin Lessler. "The incubation period of coronavirus disease 2019 (COVID-19) from publicly reported confirmed cases: estimation and application." *Annals of internal medicine* (2020).
15. Singer, H. M. "Short-term predictions of country-specific Covid-19 infection rates based on power law scaling exponents." arXiv preprint arXiv:2003.11997 (2020).
16. Awad, Mariette, and Rahul Khanna. "Support vector regression." In *Efficient Learning Machines*, pp. 67-80. Apress, Berkeley, CA, 2015.
17. De Castro, Yohann, Fabrice Gamboa, Didier Henrion, Roxana Hess, and Jean-Bernard Lasserre. "Approximate optimal designs for multivariate polynomial regression." *The Annals of Statistics* 47, no. 1 (2019): 127-155.
18. Greff, Klaus, Rupesh K. Srivastava, Jan Koutník, Bas R. Steunebrink, and Jürgen Schmidhuber. "LSTM: A search space odyssey." *IEEE transactions on neural networks and learning systems* 28, no. 10 (2016): 2222-2232.