

Clinical characteristics of 101 non-surviving hospitalized patients with COVID-19—A single center, retrospective study

Qiao Shi¹, Kai-Liang Zhao¹, Jia Yu¹, Jia-Rui Feng¹, Kai-Ping Zhao², Xiao-Yi Zhang³,
Xiao-Yan Chen¹, Peng Hu⁴, Yu-Pu Hong¹, Man Li¹, Fang Liu⁵, Chen Chen¹, Wei-Xing
Wang¹

1. Department of General Surgery, Renmin Hospital of Wuhan University, Wuhan, China; 2. Department of Medical Record Management and Statistics, Beijing Jishuitan Hospital, Beijing, China; 3. Department of Critical Care Medicine, Zhongnan Hospital of Wuhan University, Wuhan, China; 4. Department of Emergency, Renmin Hospital of Wuhan University, Wuhan, China; 5. Department of Radiology, Renmin Hospital of Wuhan University, Wuhan, China

Q Shi, KL Zhao and J Yu contributed equally to this article.

Corresponding Author Information:

Joint correspondence: C Chen, appreciation@whu.edu.cn and WX Wang, sate.llite@163.com

Dr. Weixing Wang serves as the corresponding author to communicate with editors.

Weixing Wang, MD

Department of General Surgery,

Renmin Hospital of Wuhan University,

238 Jiefang Road, Wuchang District

Wuhan 430060, China

Phone: +86 13907141893

E-mail: sate.llite@163.com

Author Contributions: WXW conceptualised the paper. QS and CC drafted the manuscript. QS, KLZ, JY, JRF, XYZ, XYC, PH, YPH and ML collected the epidemiological and clinical data. KLZ and KPZ contributed to the statistical analysis. JY and FL contributed to radiological analysis. CC and WXW were the manuscript's guarantors and supervised the overall study. All authors reviewed and approved the final version of the manuscript.

Funding: This study was funded by National Natural Science Foundation of China (No.81800574; No.81870442; No.81700567).

Running Head: Clinical characteristics of non-survivors with COVID-19

Descriptor: 10.14 Pneumonia: Viral Infections

Word Count: 2618

At a Glance Commentary

Scientific Knowledge on the Subject

COVID-19 have deprived many lives and caused global concerns. We searched PubMed for articles published up to Mar 10, 2020, using the keywords “2019 novel coronavirus”, “2019-nCoV”, “COVID-19”, or “SARS-CoV-2”. We identified that few studies focused on clinical characteristics of non-survivors with COVID-19.

What This Study Adds to the Field

We reported the demographic and clinical characteristics of 101 non-surviving hospitalized patients with COVID-19. This study showed that older patients (>70 years) with comorbidities had a steeply increased risk of death when they suffered COVID-19. Besides, respiratory failure, acute cardiac and kidney injury played a crucial role in the rapid death of patients. Furthermore, multivariable regression analysis revealed elevated levels of high sensitivity troponin I, neutrophils and depressed oxygen saturation were associated with increased odds of rapid death of patients with COVID-19.

Abstract

Rationale: COVID-19 have deprived many lives in Wuhan, China and caused global concerns. Few studies focused on clinical characteristics non-survivors hospitalized with COVID-19.

Objectives: We aimed to clarify the clinical characteristics of died patients with COVID-19 and tracked the causes of the rapid disease progression and death.

Methods: 101 non-surviving patients with confirmed COVID-19 were included in this retrospective study. Clinical data were collected and compared between non-survivors who died within 3 days and after 3 days of admission. Multivariable regression analysis was used to analyze risk factors associated with rapid disease progression and death.

Measurements and Main Results: Among included patients, median age was 71 years (IQR, 59-80), 60 (59.41%) were men. 82 (81.19%) had one or more comorbidities including hypertension (59 [58.42%]), diabetes (22 [21.78%]) etc. 100 (99.01%) suffered respiratory failure, 53 (52.48%) developed acute cardiac injury, acute kidney and liver injury occurred in 23 (22.77%) and 18 (17.82%) patients, respectively. Multivariable regression analysis showed that elevated high sensitivity troponin I (OR 2.68, 95%CI 1.31-5.49, $P=0.007$), neutrophils (OR 1.14, 95%CI 1.01-1.28, $P=0.033$) and depressed oxygen saturation (OR 0.94, 95%CI 0.89-0.99, $P=0.027$) on admission were associated with rapid death of patients with COVID-19.

Conclusions: Older patients (>70 years) with comorbidities had a steeply increased risk of death with COVID-19. Respiratory failure, acute cardiac and kidney injury played a

crucial role in the death of patients. Elevated high sensitivity troponin, neutrophils and depressed oxygen saturation predicted the rapid death of patients.

Total word in abstract: 242

Key words: Death; Organ dysfunction; SARS-CoV-2

Introduction

Since December 2019, the outbreak of corona virus disease-19 (COVID-19) caused by severe acute respiratory syndrome coronavirus 2 (SARS-CoV-2) swept across China and emerged in many other countries have caused global concerns ^[1]. As of March 10, 2020, a total of 80924 COVID-19 cases in China have been confirmed and 3140 lost their life. In the early stages of this COVID-19, respiratory infection symptoms occurred, with some patients rapidly developed acute respiratory distress syndrome (ARDS), acute respiratory failure and even death. Compared with Severe Acute Respiratory Syndrome (SARS) and Middle East Respiratory Syndrome (MERS), the concealed onset, similar or stronger contagion and lower mortality could be defined as the clinical features of the disease ^[2-4]. However, many patients suffered a death attack in the early stages of the outbreak in Wuhan City, China.

Previous studies focused on the epidemiologic, clinical characteristics and outcomes of patients with COVID-19 in mild and severe cases ^[5-6]. Some infected by SARS-CoV-2 were susceptible to suffer severe attack or even death, thus the causes and risk factors that lead to rapid disease progression and death need to be addressed further. In this study, we aimed to describe the demographic, clinical, laboratory, radiological characteristics and outcomes of non-surviving hospitalized patients confirmed with SARS-CoV-2 infection, and to analyze the possible risk factors that lead to rapid disease progression and death in patients with COVID-19.

Methods

Study Design and Participants

This study was approved by the Ethics Committee of Renmin Hospital of Wuhan

University (No. WDRY2020-K059). 101 patients with confirmed COVID-19 admitted to Renmin Hospital of Wuhan University (including Shouyi campus and Eastern campus) and died before February 15, 2020 in Wuhan, China, were enrolled. Renmin Hospital of Wuhan University is one of the major tertiary teaching hospitals in Wuhan and is a government designated hospital for COVID-19 treatment. All patients with COVID-19 enrolled in this study were diagnosed according to World Health Organization interim guidance^[7]. To analyze the causes and risk factors that associated with rapid disease progression and death in patients with COVID-19 after admission, we compared demographic, clinical, laboratory and radiological characteristics of patients died within 3 days with those survived 3 days of admission.

Procedures

We obtained epidemiologic, demographic, clinical, laboratory, and outcome data from electronic medical records. Missing data were collected through direct communication with involved health-care providers or family member of patients. All data were checked by two sophisticated physicians.

We collected data on age, sex, chronic medical conditions (hypertension, cardiovascular disease, chronic pulmonary disease, cerebrovascular disease, chronic kidney disease, diabetes, malignancy), symptoms from onset to hospital admission including fever, dry cough, expectorant, dyspnea, fatigue, anorexia, abdominal pain, headache, nausea and vomiting etc., laboratory parameters on admission, chest computed tomographic (CT) scans, and treatment measures (antiviral therapy, antibacterial therapy, corticosteroid therapy, respiratory support, kidney replacement therapy etc.). The date of disease onset was defined as the day when the onset symptoms were noticed. Acute respiratory

distress syndrome (ARDS) and acute respiratory failure were defined according to the Berlin definition and previous reported ^[8,9]. Acute kidney injury (AKI) was identified based on serum creatinine ^[10]. Acute liver injury was identified according to previous report ^[11]. Acute cardiac injury was defined if the serum hypersensitive troponin I (hsTnI) was above the 99th percentile upper reference limit ^[5].

The primary outcome was organ injury or failure (including lung, heart, kidney and liver etc.) from admission to death and analyzed the risk factors for rapid death. Secondary outcomes were to present epidemiologic and demographic data, comorbidities, signs and symptoms on admission, laboratory indicators, CT findings and treatments, and to compare the differences of patients died within 3 days with those survived 3 days of admission.

Statistical analysis

We expressed descriptive data as mean (SD) or median (IQR) for continuous variables and number (%) for categorical variables. We tested the distributions of variables for normality with Kolmogorov-Smirnov test. Means of continuous variables were compared using independent group t tests if the data were normally distributed; otherwise Mann-Whitney test was used. Proportions for categorical variables were compared using the χ^2 test. In addition, to explore the risk factors associated with the rapid disease progression and death, multivariable regression analysis was performed. Five variables (hsTnI, oxygen saturation, blood urea nitrogen (BUN), neutrophil count and age) were chosen for multivariable analysis based on previous findings, χ^2 test results and clinical observations in this study. All statistical analyses were performed using SPSS version 22.0 software (SPSS Inc). $P < 0.05$ was considered statistically

significant.

Role of the funding source

The funding sources for this study had no role in the study design, data collection, data analysis, data interpretation, or writing of the manuscript.

Results

By February 15, 2020, 121 hospitalized patients with confirmed COVID-19 had died in Renmin Hospital of Wuhan University (including Shouyi campus and Eastern campus), among which 20 cases were excluded due to incomplete medical records. 101 cases were finally included in this study. The median age was 71 years (IQR, 59-80; range, 35-100 years). 60 (59.41%) were male. There were 57(56.44%) cases whose age over 70 years (31 cases in 70-79y; 20 cases in 80-89y; and 6 cases in more than 90y) (**Table 1 and Figure 1A**). The median duration from hospital admission to death was 4 days (IQR, 2-7d). The most common symptoms were fever (82 cases, [81.19%]), dyspnea (59 cases, [58.42%]), dry cough (56 cases, [55.45%]), fatigue (36 cases, [35.64%]), expectoration (21 cases, [20.79%]) and diarrhea (10 cases, [9.90%]). Other less common symptoms were anorexia, myalgia, abdominal pain and distension, headache, nausea and vomiting, pharyngalgia, haematemesis and melena, hemoptysis. (**Table 1**)

We compared the demographic, presenting characteristics and vital signs on admission between patients died within 3 days and those survived 3 days of admission. 48 cases (47.52%) died within 3 days of admission, median age was 72 years (IQR, 59-78; range, 30-94 years), 28 (58.33%) were males. 53 cases (52.48%) died after 3 days, median age was 71 years (IQR, 59-81; range, 31-100 years), 32 (60.38%) were males. Compared with patients who survived 3 days, those died within 3 days of admission exhibited significantly higher respiration rate (25 vs 20) and heart rate (97 vs 84) at presentation. There were no significant differences of self-report symptoms between two groups including fever, dyspnea, cough, fatigue etc. (**Table 1**). 81 (81.19%) patients had more than one underlying medical conditions. Documented comorbidities including hypertension (58.42%), cardiovascular disease (23.76%), diabetes (21.78%), chronic

pulmonary disease (13.86%), cerebrovascular disease (12.87%), chronic kidney disease (10.89%) and malignancy (6.93%) (**Table 2**).

Regarding to organ functions, 100 (99.01%) patients developed acute respiratory failure, 53 (52.48%) had acute cardiac injury, acute kidney injury were developed in 23 cases (22.77%), acute liver dysfunction were found in 18 cases (17.82%) and 14 (13.86%) suffered coagulation disorders among which one patient was died of massive upper gastrointestinal bleeding. (**Table 2 and Figure 1B**)

There were quite a lot differences of laboratory parameters between patients who died within 3 days and those survived 3 days of admission. Patients died within 3 days of admission had significantly higher white blood cell count (12.36×10^9 vs 7.72×10^9 /L), neutrophil count (11.23×10^9 vs 6.48×10^9 /L). For other biochemical indexes, elevated C-reactive protein (123.4 ± 10.85 vs 94.10 ± 9.26 mg/L), procalcitonin (2.26 vs 0.58 ng/ml), hsTnI (1.98 vs 0.2 ng/ml), Creatine kinase-MB (6.14 vs 2.78 ng/ml), myoglobin (437.7 vs 216.8 ug/L) and BUN (15.2 vs 10.08 mmol/L) were over normal range and significantly higher in patients died within 3 days of admission (**Table 3**). Blood gas analyses showed patients died within 3 days presented with significantly lower oxygen saturation (80.58% vs 88.37%), higher lactate level (3.80 vs 2.62 mmol/L) and lower pH value (7.40 vs 7.42) compared with those survived 3 days (**Table 3**). Cellular and humoral immunity analysis also revealed several differences. Mean CD3⁺, CD4⁺ and CD8⁺ cells were all below normal ranges in patients died within 3 days and those survived 3 days which suggested impaired immunity in these patients. Compared with those survived 3 days, CD3⁺ and CD8⁺ percentages were significantly lower in patients died within 3 days (**Table 3**). Level of C3 complement was within normal range in both groups with a significantly higher titration in patients died within 3 days compared with those survived 3 days (1.03 vs 0.89 g/L) (**Table 3**). Chest computed tomography (CT) scans were used to evaluate the features of lung injury. Patients suffered severe lung damage and their lung imaging features presented the vast or merged glass shadow, but quantitation of lung lobe injury and injury score revealed no significant difference between patients died within 3 days and those survived 3 days of admission (**Table 3 and Figure 2**).

Among treatment strategies, most patients received antiviral therapy (96.04%) and

antibacterial therapy (98.02%), 44 (43.56%) received glucocorticoid therapy, 36 (35.64%) received gamma globulin inhalation. 78 (77.23%) received high flow oxygen inhalation, 41 (40.59%) received noninvasive ventilation while 14 (13.86%) required invasive mechanical ventilation and 5 (4.95%) received continuous renal replacement therapy (**Table 4**).

In univariable analysis, elevated white blood cell count, neutrophil count, procalcitonin, hsTnI, Creatine kinase-MB, myoglobin, BUN, C3 complement, lactate and decreased CD3⁺ cell percentage, CD8⁺ cell percentage, oxygen saturation were associated with rapid death within 3 days of admission. Multivariable logistic regression analysis revealed that elevated high sensitivity troponin I (OR 2.68, 95%CI 1.31-5.49, $P=0.007$), neutrophils (OR 1.14, 95%CI 1.01-1.28, $P=0.033$) and depressed oxygen saturation (OR 0.94, 95%CI 0.89-0.99, $P=0.027$) were associated with increased odds of rapid disease progression death within 3 days of hospital admission (**Table 5**).

Discussion

This report, to our knowledge, is the largest case series to analyze died patients with COVID-19 in hospital. As of February 15, 2020, 101 patients died because of COVID-19 were included in this study. We aimed to present the clinical features, organ dysfunction, laboratory indicators of the 101 non-survivors, and analyze possible causes and risk factors accounted for the rapid progress of disease and death. In the early outbreak of COVID-19, major gaps in our knowledge of the epidemiology, clinical features and treatment measures of COVID-19 posed huge challenge for our clinical practice. Although previous study reported the mortality of patients with COVID-19 is 1.4%^[12], some special population including the aged and individuals with

underlying comorbidities may be vulnerable to SARS-CoV-2 infection. In our cohort, the median age of non-survivors was 71 years, 81.19% of them combined with one or more underlying medical conditions including hypertension, cardiovascular disease, diabetes, chronic pulmonary disease, cerebrovascular disease, chronic kidney disease and malignancy. This study suggested that patients aged over 70 years with chronic medical conditions were more likely to suffer a severe attack and death.

Common symptoms at onset of COVID-19 were fever, dry cough, myalgia, fatigue etc. [5, 13]. In our cohort, we observed that, besides fever and cough, dyspnea (58.42%) presented early in most non-survivors with confirmed COVID-19, similar finding has also been observed in critically ill patients reported by Yang etc. [14]. In these non-survivors, featured complications during hospitalization including ARDS and respiratory failure, acute cardiac injury, AKI, acute liver injury and abnormal coagulation. In terms of SARS, severe respiratory failure was the leading cause of mortality, with little other organ failure [15]. It is surprised that we observed 52.48% and 22.77% non-survivors suffered heart failure and AKI, respectively. Angiotensin-converting enzyme 2 (ACE2), a crucial SARS-CoV-2 receptor, distributed widely in heart, kidney and intestine etc. [16-18]. Whether SARS-CoV-2 attack heart and kidney or other vital organs directly need to be confirmed further.

The most common laboratory abnormalities observed in this study were elevated white blood cell count, neutrophil count, C-reactive protein, hsTnI, BUN and decreased oxygen saturation etc. Compared with those survived 3 days of admission, non-survivors died within 3 days had numerous different findings including depressed percentages of lymphocyte, CD3⁺ and CD8⁺ cells, and elevated white blood cell count,

hsTnI and BUN. These evidences suggest that SARS-CoV-2 infection may be associated with cellular immune deficiency and lead to acute myocardial injury and kidney injury. These results also support the described organ injury above. In addition, the characteristic chest CT imaging of these non-survivors were evaluated by previous described method ^[19]. The CT features demonstrated extensive infection and severe damage, regarded as “white lung”, in five lobes, but no significant difference was found between the two groups. These characteristics combined with above reported organ failure, laboratory abnormalities suggested that early organ dysfunction or failure were responsible for rapid progression of disease and death of the patients.

Up to now, no antiviral treatment has been recommended for coronavirus treatment except supportive care and organ support ^[5, 20]. In current clinical practice, arbidol was used as an antiviral treatment for SARS-CoV-2 infected patients, but the efficacy remains to be proved. Other antiviral medications including remdesivir, lopinavir and traditional Chinese medicine are still being verified in clinical trials. Furthermore, application of intravenous immunoglobulin is recommended to enhance the ability of anti-infection for critically ill patients and steroids are recommended for patients with ARDS, for as short duration of treatment as possible ^[21]. In this study, 96.04% patients received antiviral therapy, 98.02% received antibacterial therapy. Application of glucocorticoid mainly depended on the severity of inflammatory response. In the early outbreak of COVID-19, all the non-survivors received oxygen inhalation therapy including high flow oxygen inhalation (77.23%), but quite a low proportion of patients received machine ventilation partly due to limited medical resources against the steeply increasing number of patients at early outbreak.

To explore the risk factors associated with the rapid progress of disease and death, multivariable regression analysis was performed. In this study, 100 (99.01%), 53 (52.48%) and 23 (22.77%) non-survivors suffered respiratory failure, acute cardiac injury and acute kidney injury, respectively. Univariable analysis indicated elevated hsTnI, myoglobin, creatine kinase-MB, BUN, lactate and decreased oxygen saturation were associated with increased risk of death within 3 days of admission. Representative indicators associated with organs injury including hsTnI, BUN and oxygen saturation were selected and included in multivariable regression analysis. Usually, the level of neutrophils is slightly elevated or normal in virus infections, but significantly elevated neutrophils were observed in this rapid death of patients in our study. Viral infections may impair the immune system and facilitate opportunistic infection and neutrophils are crucial in protection of bacterial infections [22]. So, neutrophil count was also included in our multivariable regression analysis. The median age of 101 died patients with COVID-19 were 71 years (IQR, 59-80) which was older compared to recent report [5]. We also included age in multivariable analysis although median age of patients died within 3 days and survived 3 days of admission did not have significant difference, because older age has been reported to be associated with poor outcomes in critically ill patients with COVID-19 [12]. Multivariable regression analysis revealed that decreased oxygen saturation, increased neutrophil count and elevated hsTnI on admission were associated with increased odds of rapid death within 3 days of hospital admission. Early detection of these factors could help physicians to identify rapid progress of disease and death of patients with COVID-19.

Several limitations existed in this study. Firstly, evaluation of CT imaging features partly depended on the experience of clinicians and radiologists which may cause

inaccuracy. Secondly, in the early outbreak of COVID-19, relatively inadequate medical resources may affect the observation of the natural course of disease. Finally, only 101 patients died with COVID-19 in one hospital were included in this study, further studies including multi-centers are still needed.

Conclusion

The findings of our study suggested that older patients (>70 years) with comorbidities had a steeply increased risk of death with COVID-19. Besides, respiratory failure, acute cardiac and kidney injury played a crucial role in the death of patients. Elevated high sensitivity troponin, neutrophils and depressed oxygen saturation predicted the rapid death of patients with COVID-19.

Acknowledgment: We thank for all patients and health providers involved in this study.

References

1. Wang C, Horby PW, Hayden FG, Gao GF. A novel coronavirus outbreak of global health concern. *The Lancet* 2020; 395: 470-473.
2. Chang D, Lin M, Wei L, Xie L, Zhu G, Cruz CSD, Sharma L. Epidemiologic and clinical characteristics of novel coronavirus infections involving 13 patients outside Wuhan, China. *Jama* 2020; published online 7 February. doi.org/10.1001/jama.2020.1623.
3. WHO. Middle East respiratory syndrome coronavirus (MERS-CoV). (accessed Feb 25, 2020). Available from: <http://www.who.int/emergencies/mers-cov/en/>.
4. WHO. Novel coronavirus—China. (accessed Feb 25, 2020). Available from: <http://www.who.int/csr/don/12-january-2020-novel-coronavirus-china/en/>.
5. Wang D, Hu B, Hu C, Zhu F, Liu X, Zhang J, Wang B, Xiang H, Cheng Z, Xiong Y. Clinical characteristics of 138 hospitalized patients with 2019 novel coronavirus–infected pneumonia in Wuhan, China. *Jama* 2020; published online 7 February. doi.org/10.1001/jama.2020.1585.
6. Chan JF-W, Yuan S, Kok K-H, To KK-W, Chu H, Yang J, Xing F, Liu J, Yip CC-Y, Poon RW-S. A familial cluster of pneumonia associated with the 2019 novel coronavirus indicating person-to-person transmission: a study of a family cluster. *The Lancet* 2020; 395: 514-523.
7. WHO. Clinical management of severe acute respiratory infection when novel coronavirus (nCoV) infection is suspected. (accessed Feb 25, 2020). Available from: [https://www.who.int/publications-detail/clinical-management-of-severe-acute-respiratory-infection-when-novel-coronavirus-\(ncov\)-infection-is-suspected](https://www.who.int/publications-detail/clinical-management-of-severe-acute-respiratory-infection-when-novel-coronavirus-(ncov)-infection-is-suspected)
8. Azoulay E, Mokart D, Kouatchet A, Demoule A, Lemiale V. Acute respiratory failure in immunocompromised adults. *The Lancet Respiratory Medicine* 2019; 7: 173-186.
9. Definition Task Force A, Ranieri V, Rubenfeld G, Thompson B, Ferguson N, Caldwell E, Fan E, Camporota L, Slutsky A. Acute respiratory distress syndrome: the Berlin Definition. *Jama* 2012; 307: 2526-2533.

10. Khwaja A. KDIGO clinical practice guidelines for acute kidney injury. *Nephron Clin Pract* 2012; 120: c179-c184.
11. Koch DG, Speiser J, Durkalski V, Fontana R, Davern T, McGuire B, Stravitz R, Larson A, Liou I, Fix O. The natural history of severe acute liver injury. *The American journal of gastroenterology* 2017; 112: 1389.
12. Guan W-j, Ni Z-y, Hu Y, Liang W-h, Ou C-q, He J-x, Liu L, Shan H, Lei C-l, Hui DS. Clinical characteristics of 2019 novel coronavirus infection in China. *N Engl J Med* 2020; medRxiv Feb 9. doi.org/10.1101/2020.02.06.20020974.
13. Zhu N, Zhang D, Wang W, Li X, Yang B, Song J, Zhao X, Huang B, Shi W, Lu R. A novel coronavirus from patients with pneumonia in China, 2019. *N Engl J Med* 2020; 382: 727-733.
14. Yang X, Yu Y, Xu J, Shu H, Liu H, Wu Y, Zhang L, Yu Z, Fang M, Yu T. Clinical course and outcomes of critically ill patients with SARS-CoV-2 pneumonia in Wuhan, China: a single-centered, retrospective, observational study. *Lancet Respir Med* 2020; published online 24 February. doi.org/10.1016/S2213-2600(20)30079-5.
15. Gomersall CD, Joynt GM, Lam P, Li T, Yap F, Lam D, Buckley TA, Sung JJ, Hui DS, Antonio GE. Short-term outcome of critically ill patients with severe acute respiratory syndrome. *Intensive Care Med* 2004; 30: 381-387.
16. Santos RAS, Sampaio WO, Alzamora AC, Motta-Santos D, Alenina N, Bader M, Campagnole-Santos MJ. The ACE2/angiotensin-(1-7)/MAS axis of the renin-angiotensin system: focus on angiotensin-(1-7). *Physiological reviews* 2018; 98: 505-553.
17. Hashimoto T, Perlot T, Rehman A, Trichereau J, Ishiguro H, Paolino M, Sigl V, Hanada T, Hanada R, Lipinski S. ACE2 links amino acid malnutrition to microbial ecology and intestinal inflammation. *Nature* 2012; 487: 477-481.
18. Lu R, Zhao X, Li J, Niu P, Yang B, Wu H, Wang W, Song H, Huang B, Zhu N. Genomic characterisation and epidemiology of 2019 novel coronavirus: implications for virus origins and receptor binding. *The Lancet* 2020; 395: 565-574.

19. Chung M, Bernheim A, Mei X, Zhang N, Huang M, Zeng X, Cui J, Xu W, Yang Y, Fayad Z. CT imaging features of 2019 novel coronavirus (2019-nCoV). *Radiology* 2020; published online 4 February. doi.org/10.1148/radiol.2020200230.
20. de Wit E, van Doremalen N, Falzarano D, Munster VJ. SARS and MERS: recent insights into emerging coronaviruses. *Nature Reviews Microbiology* 2016; 14: 523.
21. Chen N, Zhou M, Dong X, Qu J, Gong F, Han Y, Qiu Y, Wang J, Liu Y, Wei Y. Epidemiological and clinical characteristics of 99 cases of 2019 novel coronavirus pneumonia in Wuhan, China: a descriptive study. *The Lancet* 2020; 395: 507-513.
22. Kolaczkowska E, Kubes P. Neutrophil recruitment and function in health and inflammation. *Nat Rev Immunol* 2013; 13: 159-175.

Table 1. Baseline Characteristics of the non-survivors

Variables	Total (N=101)	Patients died within 3 days (N=48)	Patients survived 3 days (N=53)	P Value [#]
Sex				
Male	60 (59.41%)	28 (58.33%)	32 (60.38%)	0.835
Female	41 (40.59%)	20 (41.67%)	21 (39.62%)	
Age, Median (IQR), y	71 (59-80)	72 (59-78)	71 (59-81)	0.762
Age range				
30-39y	4 (3.96%)	2 (4.17%)	2 (3.77%)	1.000
40-49y	3 (2.97%)	2 (4.17%)	1 (1.89%)	0.931
50-59y	19 (18.81%)	8 (16.67%)	11 (20.75%)	0.600
60-69y	18 (17.82%)	7 (14.58%)	11 (20.75%)	0.418
70-79y	31 (30.69%)	18 (37.50%)	13 (24.53%)	0.158
80-89y	20 (19.80%)	9 (18.75%)	11 (20.75%)	0.801
≥90y	6 (5.94%)	2 (4.17%)	4 (7.55%)	0.767
From admission to death Median (IQR), d	4 (2-7)	2 (1-3)	7 (5-8)	0.000 [#]
Signs and Symptoms				
Fever	82 (81.19%)	38 (79.17%)	44 (83.02%)	0.621
Dyspnea	59 (58.42%)	28 (58.33%)	31 (58.49%)	0.987
Dry cough	56 (55.45%)	23 (47.92%)	33 (62.26%)	0.147
Fatigue	36 (35.64%)	19 (39.58%)	17 (32.08%)	0.431
Expectoration	21 (20.79%)	8 (16.67%)	13 (24.53%)	0.331
Diarrhea	10 (9.90%)	4 (8.33%)	6 (11.32%)	0.616
Anorexia	7 (6.93%)	4 (8.33%)	3 (5.66%)	0.597
Myalgia	6 (5.94%)	1 (2.08%)	5 (9.43%)	0.255
Abdominal pain and distension	5 (4.95%)	3 (6.25%)	2 (3.77%)	0.909
Headache	5 (4.95%)	1 (2.08%)	4 (7.55%)	0.421
Nausea and vomit	3 (2.97%)	1 (2.08%)	2 (3.77%)	1.000
Pharyngalgia	3 (2.97%)	2 (4.17%)	1 (1.89%)	0.931
Hemoptysis	2 (1.98%)	1 (2.08%)	1 (1.89%)	1.000
Vital signs on admission, Median (IQR)				
Temperature, °C	38.5(37.8-39.0)	38.0(37.5-38.8)	38.5(37.9-39.0)	0.143
HR, bpm	88 (78-106)	97 (81-112)	84 (75-98)	0.017 [#]
RR, rpm	21 (19-30)	25 (20-36)	20 (19-24)	0.003 [#]
MAP, mmHg	93 (83-105)	93(82-107)	93 (85-105)	0.565

Data are expressed as median (IQR) or n (%). Abbreviation: HR, Heart rate; IQR, Interquartile range; MAP, Mean arterial pressure; RR, Respiratory rate. [#] P values indicate differences between patients died within 3 days and those survived 3 days of admission. $P < 0.05$ was considered statistically significant.

Table 2. Main comorbidities and complications of non-survivors

Variables	Total (N=101)	Patients died within 3 days (N=48)	Patients survived 3 days (N=53)	P Value[#]
Number of Main Comorbidities				
0	19 (18.81%)	11 (22.92%)	8 (15.09%)	0.315
1	28 (27.72%)	15 (31.25%)	13 (24.53%)	0.451
2	25 (24.75%)	14 (29.17%)	11 (20.75%)	0.328
3	15 (14.85%)	4 (8.33%)	11 (20.75%)	0.080
4	4 (3.96%)	2 (4.17%)	2 (3.77%)	1.000
5	4 (3.96%)	1 (2.08%)	3 (5.66%)	0.682
6	6 (5.94%)	1 (2.08%)	5 (9.43%)	0.255
Main Comorbidities				
Hypertension	59 (58.42%)	26 (54.17%)	33 (62.26%)	0.410
Cardiovascular disease	24 (23.76%)	9 (18.75%)	15 (28.30%)	0.260
Diabetes	22 (21.78%)	9 (18.75%)	13 (24.53%)	0.482
Chronic pulmonary disease	14 (13.86%)	4 (8.33%)	10 (18.87%)	0.126
Cerebrovascular disease	13 (12.87%)	4 (8.33%)	9 (16.98%)	0.195
Chronic kidney disease	11 (10.89%)	2 (4.17%)	9 (16.98%)	0.039 [#]
Malignancy	7 (6.93%)	3 (6.25%)	4 (7.55%)	1.000
Complications				
Respiratory failure	100 (99.01%)	47 (97.92%)	53 (100%)	0.941
Acute cardiac injury	53 (52.48%)	28 (58.33%)	25 (47.17%)	0.262
Acute kidney injury	23 (22.77%)	12 (25.00%)	11 (20.75%)	0.611
Acute liver injury	18 (17.82%)	9 (18.75%)	9 (16.98%)	0.817
Coagulation disorders	14 (13.86%)	4 (8.33%)	10 (18.87%)	0.126

Data are expressed as n (%) or mean (SD). [#] P values indicate differences between patients died within 3 days and those survived 3 days of admission. *P*<0.05 was considered statistically significant.

Table3. Changes of laboratory indicators and Lung severity score

Variables	Normal Range	Total	Patients died within 3 days (N=48)	Patients survived 3 days (N=53)	P Value [#]
White blood cell count, $\times 10^9/L$	3.5-9.5	9.73 \pm 0.66	12.36 \pm 1.25	7.72 \pm 0.51	0.0003 [#]
Neutrophil count, $\times 10^9/L$	1.8-6.3	8.47 \pm 0.66	11.23 \pm 1.24	6.48 \pm 0.48	0.0002 [#]
Lymphocyte count, $\times 10^9/L$	1.1-3.2	0.76 \pm 0.08	0.70 \pm 0.08	0.69 \pm 0.05	0.913
Platelet count, $\times 10^9/L$	125-350	178.2 \pm 10.83	185.20 \pm 21.25	173.0 \pm 10.50	0.578
C-reactive protein, mg/L	0.068-8.2	107.9 \pm 7.24	123.40 \pm 10.85	94.10 \pm 9.26	0.043 [#]
Procalcitonin, ng/ml	<0.1	1.30 \pm 0.40	2.26 \pm 0.87	0.58 \pm 0.13	0.035 [#]
NT-proBNP, pg/mL	0-1800	2016 \pm 356.0	2149 \pm 493.6	1912 \pm 508.7	0.743
hsTnI, ng/ml	0-0.04	0.98 \pm 0.40	1.98 \pm 0.87	0.20 \pm 0.10	0.024 [#]
Creatine kinase-MB, ng/ml	0-5	8.91 \pm 4.05	6.14 \pm 1.37	2.78 \pm 0.36	0.011 [#]
Myoglobin, ug/L	0-110	315.8 \pm 38.50	437.70 \pm 70.46	216.8 \pm 31.78	0.003 [#]
ALT, U/L	7-40	55.99 \pm 19.20	88.64 \pm 46.39	34.15 \pm 4.14	0.164
AST, U/L	13-35	116.8 \pm 67.70	219.2 \pm 165.2	46.15 \pm 4.30	0.211
Albumin, g/L	40-55	33.14 \pm 0.51	32.32 \pm 0.81	33.75 \pm 0.63	0.163
Total bilirubin, mmol/L	0-23	25.01 \pm 6.69	28.94 \pm 11.99	22.38 \pm 7.77	0.632
BUN, mmol/L	3.1-8.8	11.94 \pm 1.09	15.20 \pm 2.37	10.08 \pm 1.01	0.030 [#]
Creatinine, μ mol/L	41-81	139.8 \pm 22.83	172.5 \pm 45.75	116.50 \pm 21.63	0.227
Blood glucose, mmol/L	3.9-6.1	8.91 \pm 0.70	8.84 \pm 0.80	8.99 \pm 1.06	0.917
Prothrombin time, s	9-13	15.35 \pm 2.04	18.73 \pm 5.23	13.22 \pm 0.56	0.186
APTT, s	25.1-36.5	34.43 \pm 2.10	37.96 \pm 5.07	32.17 \pm 1.21	0.176
D-dimer, mg/L	0-0.55	15.31 \pm 3.43	21.28 \pm 7.19	11.47 \pm 3.30	0.167
CD3%	56%-86%	56.91 \pm 1.83	51.57 \pm 3.19	60.43 \pm 2.04	0.017 [#]
CD3	723-2737 /ul	341.50 \pm 29.1	331.10 \pm 49.64	372.10 \pm 38.37	0.512
CD4%	33%-58%	33.96 \pm 1.43	34.20 \pm 2.59	33.81 \pm 1.69	0.894
CD4	404-1612 /ul	195.6 \pm 15.08	203.30 \pm 23.56	197.90 \pm 19.30	0.860
CD8%	13%-39%	24.67 \pm 4.63	16.42 \pm 1.78	23.42 \pm 1.93	0.015 [#]
CD8	220-1129 /ul	130.40 \pm 16.60	120.70 \pm 30.10	151.00 \pm 22.48	0.416
C3 Complement	0.81-1.6 g/L	0.95 \pm 0.03	1.03 \pm 0.05	0.89 \pm 0.04	0.025 [#]
C4 Complement	0.1-0.4 g/L	0.27 \pm 0.02	0.29 \pm 0.03	0.25 \pm 0.02	0.209
Blood gas analysis					
pH	7.35-7.45	7.39 \pm 0.01	7.40 \pm 0.02	7.42 \pm 0.01	0.013 [#]
PaO ₂ , mmHg	80-100	61.64 \pm 3.75	54.75 \pm 4.42	67.45 \pm 5.71	0.092
PaCO ₂ , mmHg	35-45	36.97 \pm 1.24	38.79 \pm 2.21	35.44 \pm 1.30	0.179
Oxygen saturation, %	95-98	84.89 \pm 1.46	80.58 \pm 2.48	88.37 \pm 1.56	0.007 [#]
Lactate, mmol/L	0.5-1.5	3.16 \pm 0.28	3.80 \pm 0.51	2.62 \pm 0.26	0.035 [#]
Lung severity score	0-20	12.02 \pm 6.76	11.91 \pm 6.64	12.07 \pm 6.94	0.946

Data are expressed as mean (SD). Abbreviation: APTT, activated partial thromboplastin time; ALT, alanine aminotransferase; AST, aspartate aminotransferase; BUN, blood urea nitrogen; hsTnI, high sensitivity troponin I; PaO₂, partial arterial oxygen pressure; PaCO₂, partial arterial carbon dioxide pressure. [#] P values indicate differences between patients died within 3 days and those survived 3 days of admission. P<0.05 was considered statistically significant.

Table 4. Treatment of the Non-survivors

Treatment	Total (N=101)	Patients died within 3 days (N=48)	Patients survived 3 days (N=53)	P Value[#]
Antiviral therapy	97 (96.04%)	47 (97.92%)	50 (94.34%)	0.357
Antibiotic therapy	99 (98.02%)	47 (97.92%)	52 (98.11%)	0.944
Glucocorticoid therapy	44 (43.56%)	17 (35.42%)	27 (50.94%)	0.116
Gamma globulin therapy	36 (35.64%)	13 (27.08%)	23 (43.40%)	0.087
High flow oxygen inhalation	78 (77.23%)	35 (72.92%)	43 (81.13%)	0.326
Noninvasive ventilation	41 (40.59%)	11 (22.92%)	30 (56.60%)	0.001 [#]
Invasive mechanical ventilation	14 (13.86%)	8 (16.67%)	6 (11.32%)	0.437
CRRT	5 (4.95%)	2 (4.17%)	3 (5.66%)	1.000

Data are expressed as n (%). Abbreviation: CRRT, continuous renal replacement therapy. [#] *P* values indicate differences between patients died within 3 days of admission and those survived 3 days. *P*<0.05 was considered statistically significant.

Table 5. Risk factors associated the rapid death

Variables	Groups	Multivariable regression analysis		
		OR	95% CI	P Value [#]
Oxygen saturation (%)	Survived 3 days	1 (ref)
	Died within 3 days	0.94	0.89- 0.99	0.027 [#]
BUN (mmol/L)	Survived 3 days	1 (ref)
	Died within 3 days	1.01	0.96-1.06	0.742
Neutrophil count ($\times 10^9/L$)	Survived 3 days	1 (ref)
	Died within 3 days	1.14	1.01- 1.28	0.033 [#]
hsTnI (ng/ml)	Survived 3 days	1 (ref)
	Died within 3 days	2.68	1.31-5.49	0.007 [#]
Age (years)	Survived 3 days	1 (ref)
	Died within 3 days	1.02	0.98-1.53	0.274

Data are expressed as n (%). Abbreviation: BUN, blood urea nitrogen; hsTnI, high sensitivity troponin I; OR, odds ratio; Ref, reference; 95%CI, 95% confidence interval. [#] P values indicate differences between patients died within 3 days of admission and those survived 3 days. P<0.05 was considered statistically significant.

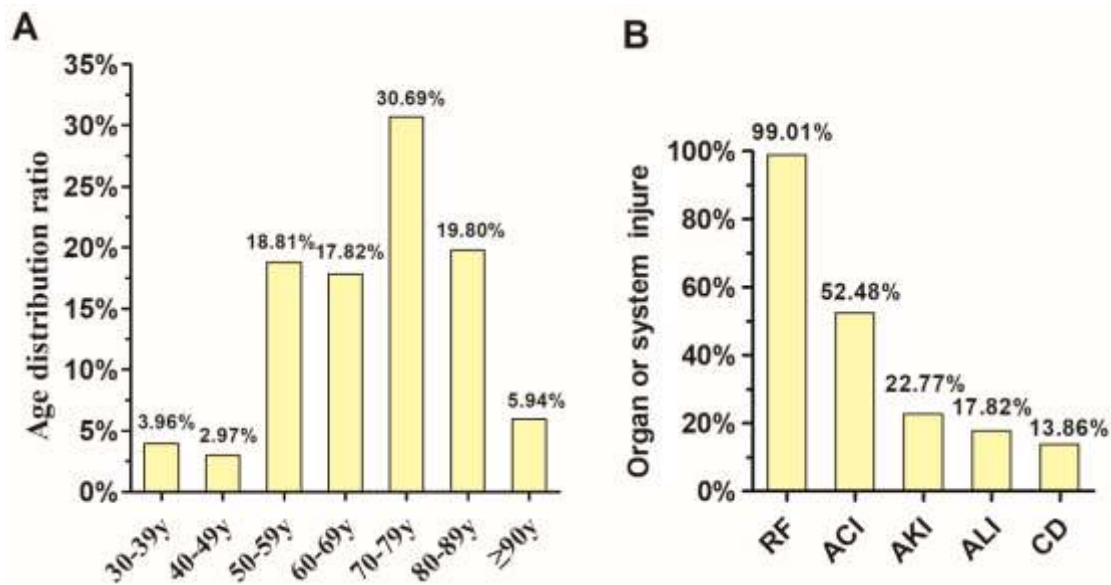
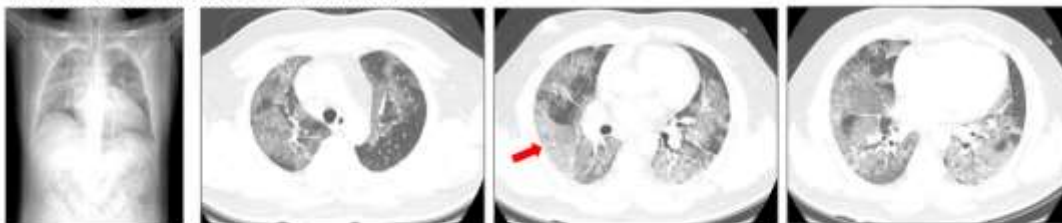


Figure 1. A: Age distribution of the 101 non-survivors; B: Percentage of organ or system injuries for 101 non-survivors. Abbreviation: RF, Respiratory failure; ACI, acute cardiac injury; AKI, acute kidney injury; ALI, acute liver injury; CD, coagulation disorders.

A. Patient died within 3d of admission



B. Patient died after 3d of admission

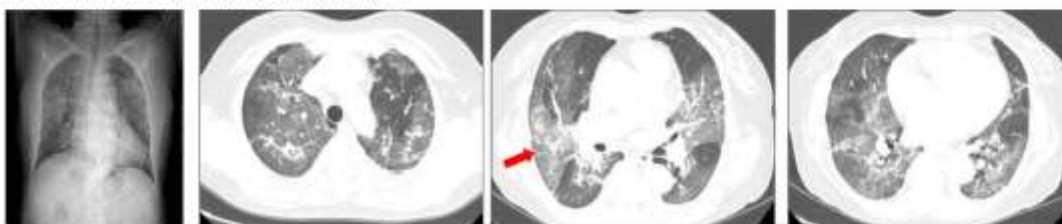


Figure 2 A: Chest computed tomographic images obtained from a 47-year-old male patient on day 6 after symptom onset, showed extensive and fused ground glass opacity (red arrow) in both lungs. B: Chest computed tomographic images obtained from a 59-year-old female on day 7 after symptom onset, showed extensive and fused ground glass opacity (red arrow) in both lungs.