

1 **The potential cost-effectiveness of**
2 **controlling dengue in Indonesia using**
3 ***wMel Wolbachia* released at scale: a**
4 **modelling study**

5
6 Oliver J. Brady,^{1,2*} Dinar D. Kharisma,³ Nandyan N. Wilastonegoro,⁴ Kathleen M. O'Reilly,^{1,5}
7 Emilie Hendricx,^{1,2} Leonardo S. Bastos,^{1,2} Laith Yakob,^{1,5} Donald S. Shepard³

8
9
10 **Affiliations**

11
12 ¹ Centre for the Mathematical Modelling of Infectious Diseases, London School of Hygiene &
13 Tropical Medicine, London, UK

14 ² Department of Infectious Disease Epidemiology, Faculty of Epidemiology and Population
15 Health, London School of Hygiene & Tropical Medicine, London, UK

16 ³ Heller School for Social Management and Policy, Brandeis University, Waltham, MA USA

17 ⁴ Faculty of Medicine, Public Health and Nursing, Gadjah Mada University, Yogyakarta,
18 Indonesia

19 ⁵ Department of Disease Control, Faculty of Infectious Tropical Diseases, London School of
20 Hygiene & Tropical Medicine, London, UK

21
22
23 * Correspondence to oliver.brady@lshtm.ac.uk

28 Abstract

29 Background

30 Release of virus-blocking *Wolbachia* infected mosquitoes is an emerging disease control
31 strategy that aims to control dengue and other arboviral infections. Early entomological
32 data and modelling analyses have suggested promising outcomes and *wMel Wolbachia*
33 releases are now ongoing or planned in 12 countries. To help inform potential scale-up
34 beyond single city releases, we assessed this technology's cost-effectiveness under different
35 programmatic options.

36

37 Methods

38 Using costing data from existing *Wolbachia* releases, previous estimates of *Wolbachia*
39 effectiveness, and a spatially-explicit model of release and surveillance requirements, we
40 predicted the costs and effectiveness of the on-going programme in Yogyakarta City and
41 three new hypothetical programmes in Yogyakarta Special Autonomous Region, Jakarta and
42 Bali.

43

44 Results

45 We predicted *Wolbachia* to be a highly cost-effective intervention when deployed in high
46 density urban areas with gross cost-effectiveness ratios below \$1,500 per DALY averted.
47 When offsets from the health system and societal perspective were included, such
48 programmes even became cost saving over 10-year time horizons with favourable benefit-
49 cost ratios of 1.35 to 3.40. Sequencing *Wolbachia* releases over ten years could reduce
50 programme costs by approximately 38% compared to simultaneous releases everywhere,
51 but also delays the benefits. Even if unexpected challenges occurred during deployment,
52 such as emergence of resistance in the medium-term or low effective coverage, *Wolbachia*
53 would remain a cost saving intervention.

54

55 **Conclusions**

56 *Wolbachia* releases in high density urban areas is expected to be highly cost-effective and
57 could potentially be the first cost saving intervention for dengue. Sites with strong public
58 health infrastructure, fiscal capacity, and community support should be prioritized.

59

60 **Keywords**

61 dengue; wolbachia; mosquito; indonesia; cost-effectiveness-analysis; maps; spatial; model;
62 policy

63

64 Background

65 The mosquito species *Aedes aegypti* and *Ae. albopictus* are responsible for transmitting a
66 range of growing global arboviral infections. Existing vector control tools alone have been
67 unable to sustainably control these mosquito species or the diseases they transmit [1], and
68 a range of novel technologies are under development [2].

69 One such novel intervention is release of mosquitoes infected with the intracellular
70 bacterium *Wolbachia* [3]. Mosquitoes infected with *Wolbachia* are i) less likely to
71 disseminate dengue, chikungunya, Zika and yellow fever viruses and thus are less likely to
72 become infectious [3–5] and ii) can suppress or replace the natural mosquito population
73 due to fatal cytoplasmic incompatibility among *Wolbachia*-wild type mating pairs [3].
74 *Wolbachia* can, therefore, be used to either replace the existing mosquito population with a
75 lower competence phenotype by releasing females or suppress existing population by
76 releasing males. To date, 13 countries have ongoing replacement programmes at various
77 stages of development, with 12 through the World Mosquito Programme (WMP,
78 www.worldmosquitoprogram.org) and an independent program in Malaysia [6]. Meanwhile
79 China [7], Singapore [8], and the USA [9] have chosen to use suppression-based
80 programmes due to perceived greater compatibility with their existing intensive and long
81 term efforts to suppress mosquito populations.

82 Replacement programmes with *Wolbachia* entail substantial initial investments to establish
83 *Wolbachia* in the mosquito population through intensive releases at the beginning of the
84 programme but potentially offer considerable long-term benefits. The replacement
85 approach contrasts with suppression strategies with *Wolbachia*, sterile insect techniques or
86 conventional vector control tools, which likely need ongoing application. Both approaches
87 are in the early stages of gathering entomological and epidemiological evidence of
88 effectiveness [2]. Among these novel methods, replacement with *wMel Wolbachia* has,
89 arguably, the most developed evidence base so far [10] because it has demonstrated
90 replacement in multiple sites [11, 12], durability of unaltered replacement since 2011 in
91 Townsville, Australia [13], reductions in reported dengue cases in observational study
92 designs in five countries [14], and a cluster randomised trial is currently underway in
93 Yogyakarta, Indonesia [15] with epidemiological outcome results expected in late 2020.

94 Recent events including the 2015-7 Latin American Zika outbreak and the record breaking
95 2019 global dengue outbreak have hastened the adoption of novel *Aedes* control tools.
96 Given the acute need to make decisions on adoption, mathematical models can be used to
97 predict impact in different areas long before field data become available [16, 17]. Pairing
98 these epidemiological predictions with intervention cost and cost-of-illness data enable
99 cost-effectiveness calculations that can inform decisions on *Wolbachia* scale up.

100 One such priority setting is Indonesia, where city-wide *Wolbachia* releases are already
101 planned in Yogyakarta City after the randomised trial [15]. In 2016 Indonesia launched its
102 “Healthy Indonesia Program with Family Approach”, which includes cleaning the
103 environment and addressing communicable diseases, including malaria and dengue [18].
104 This program provides encouragement and some national funding. In addition, in the
105 Yogyakarta Special Autonomous Region (SAR), the governor has confirmed his support for
106 novel technologies, including *Wolbachia* [19], suggesting support for expansion beyond
107 Yogyakarta City.

108 Cost effectiveness analyses (CEAs) have proved instrumental for early adoption of a number
109 of interventions, including for *Aedes*-borne pathogens. Fitzpatrick et al. estimated that,
110 assuming they were 70-90% effective, conventional *Aedes* suppression tools would achieve
111 cost-effectiveness ratios of between \$679-\$1331 per Disability-Adjusted Life Year (DALY)
112 averted (2013 USD) [20]. The recently developed dengue vaccine, Dengvaxia[®], also included
113 model-predicted CEA as part of its feasibility assessment, with predictions without sero-
114 testing of \$11-44 per DALY averted (2014 USD) [21]. Dengvaxia[®] has also been estimated to
115 be highly cost effective (\$1,800 per DALY, health systems perspective) or cost saving (\$-
116 1,800 per DALY, societal perspective) under the WHO’s modified test-and-vaccinate
117 recommendation, however with more limited overall impact (14.3% reduction in
118 hospitalisation) [22].

119 Here we use existing *Wolbachia* release cost and programme data to build a model that
120 predicts cost of release in different environments. We merge the cost predictions with
121 previously published estimates of *Wolbachia* effectiveness [16] to assess cost-effectiveness
122 and its sensitivity to different programmatic options for consideration at the next stage of
123 scale up of this technology.

124

125 Methods

126 Phases of the programme

127 In this analysis we conceptually divide a potential *Wolbachia* replacement programme in a
128 given city into four phases based on previous WMP operations. We do not consider the
129 additional costs of obtaining regulatory approval in Indonesia as *Wolbachia* release has
130 already been approved by the local Yogyakarta SAR government and the national
131 government already has an active involvement in the project as part of the independent
132 data monitoring committee. Phase 1 (“Setup”, 2 year duration) includes establishing
133 insectaries, laboratories, site offices, local regulatory approval, hiring staff and planning and
134 administering the programme and pre-release community engagement. Phase 2 (“Release”,
135 1 year duration) involves release of *Wolbachia* mosquitoes over target areas applying the
136 resources established during Phase 1. In Phase 3 (“short-term monitoring”, 3 years
137 duration), ongoing surveillance of the mosquito and human population is conducted in the
138 release area. Phase 4 (“long-term monitoring”, 7 years duration) entails reduced
139 entomologic monitoring as the intervention proves its reliability.

140 In the existing program in Yogyakarta City, programme setup took four years; however, this
141 included gaining national approval, design of the cluster randomised trial, all Phase 1
142 activities and release in half the city. We anticipate faster setup times of subsequent
143 programmes elsewhere in Indonesia due to the experiences and approvals gained in
144 Yogyakarta City.

145 For the main analysis we consider two speed scenarios: i) an “accelerated” scenario, with
146 every area conducting Phases 1-4 simultaneously and independently (total programme
147 length 13 years), and ii) a “sequenced” scenario, in which Phase 2 releases are spread over
148 10 years with certain centralised resources moved or re-utilized across different locations
149 (total programme length 20 years, Appendix page 7).

150 Costing *Wolbachia* releases (Phases 1 and 2)

151 We hypothesised that the main determinants of the cost of releasing *Wolbachia* per square
152 kilometre (km) were directly or indirectly related to: i) the human population density in the
153 release area, ii) release material (adult or egg mosquitoes), iii) local cost of labour (as
154 measured by country Gross Domestic Product adjusted for Purchasing Power Parity (GDP
155 PPP)[23]) and iv) phase of the programme. Previous *Wolbachia* releases have shown that

156 higher human density areas require higher mosquito release numbers per unit area because
157 they typically have higher natural mosquito population sizes, hence raising costs [24].
158 Transportation costs of *Wolbachia*-infected mosquito eggs are lower than for adult releases
159 because they can be distributed by the postal system and because the community can
160 undertake releases; however, this can also increase community engagement costs. Adult
161 releases require specific equipment and personnel to drive around the target area and
162 conduct releases at pre-specified sites, but can potentially be achieved more quickly.

163 Data were extracted from WMP budgets for releases in Indonesia, Colombia, Sri Lanka,
164 Australia and Vanuatu (Appendix page 1). These data were used to fit a generalised linear
165 regression model between cost per km² of release area and the above covariates (Appendix
166 page 2).

167 Costing long-term surveillance (Phases 3 and 4)

168 Our estimates of the long-term monitoring costs of a *Wolbachia* programme (Phase 3 and 4)
169 build on a detailed budget analysis developed by the WMP for Phase 2 of the programme in
170 Yogyakarta City. This includes a gradual reduction in monitoring intensity with
171 corresponding budget reductions (Appendix page 7).

172 Cost of dengue illness averted

173 We obtain current fine-scale (5km x 5km) estimates of the current case burden of dengue in
174 Indonesia and the economic cost per case in different treatment settings and from different
175 payer perspectives from recent parallel studies. [16, 25] These maps of burden were
176 downscaled to 100m x 100m spatial resolution to match the resolution of population
177 datasets using bilinear interpolation.

178 Candidate release sites

179 In this analysis we produce estimates for four candidate sites. (1) Yogyakarta City, (2)
180 remaining areas in Yogyakarta SAR, (3) most of the special capital region of Jakarta
181 (excluding Kepulauan Seribu [Thousand Islands] Regency), and (4) the island of Bali.

182 We chose this focus based on a combination of political, economic, and epidemiologic
183 considerations. The Yogyakarta City trial carried an ethical and political expectation to
184 assess expanding releases across the rest of Yogyakarta City and the remainder of the SAR.

185 The other two candidate sites, Jakarta and Bali, are two of the country's most important

186 economic regions as commercial and tourism hubs. In epidemiologic terms, high density
187 cities, such as Jakarta and Denpasar, Bali have a disproportionately high concentration of
188 national dengue burden [16] and island-wide releases are likely to minimise the risk of re-
189 introduction of native *Ae. aegypti* populations.

190 Within each of these sites, not every area is expected to be covered by *Wolbachia*. We
191 consider only areas with a human population density of at least 1,000 people per km² as
192 eligible for *Wolbachia* releases. Previous WMP releases in Townsville and Cairns, Australia
193 have proven the ability to establish *Wolbachia* in areas approaching 1,000 people per km²
194 (Figure 1), but based on existing programme experience, lower population densities are
195 likely to prove prohibitive to natural mosquito dispersal and may significantly increase the
196 cost or lower persistence of *Wolbachia* mosquitoes.

197 Time horizon, acquisition of benefits and discounting

198 As *Wolbachia* is an early stage technology, we take a conservative approach to our
199 calculation of cost-effectiveness. We only assume benefits of *Wolbachia* persist for 10 years
200 post completion of releases in the target area (i.e. benefits only accumulated in Phases 3-4,
201 Appendix page 7) based on the duration of continued persistence of *Wolbachia* releases in
202 northern Queensland since 2011 [26].

203 We assumed that the number of cases averted would be the same each year. All costs and
204 benefits were discounted at 3% per annum [27], calculated at the end of each year. The cost
205 of the programme was predicted using population data at 100m x 100m resolution from
206 Worldpop [28] assuming a programme using egg releases with Indonesia's national-2018
207 per capita GDP (PPP, \$12,378).

208 Two measures of cost-effectiveness are shown. First, from a health systems perspective
209 (gross cost-effectiveness), where the investment cost of the programme is divided by the
210 number of DALYs averted over the 10 years post deployment (discounted at 3% per year).
211 Second, from a societal perspective (net cost-effectiveness), where offsets to direct medical
212 treatment costs are first deducted from the programme investment costs. Benefit-cost
213 ratios are also calculated from health systems and societal perspectives separately.

214 Sensitivity analyses

215 To assess the sensitivity of our predictions to uncertainties in various inputs to our model
216 we performed a univariate sensitivity analysis based on the 2.5% and 97.5% estimates for

217 each of the following parameters: i) case burden, ii) *Wolbachia* effectiveness, iii) cost of
218 *Wolbachia* releases, and iv) cost per episode of dengue illness. In addition, we also
219 examined the sensitivity of cost-effectiveness to several hypothesised environmental and
220 genetic challenges and changes that may occur as a consequence of *Wolbachia* introduction
221 [29]. These include i) low coverage (50% vs baseline 100% coverage), ii) releases that are
222 initially uncompetitive with wild-type mosquito populations and iii) emergence of resistance
223 (after 5 years). The cost-effectiveness of programme modifications to address these
224 challenges are also assessed. Furthermore, we predict the cost-effectiveness of future cost-
225 saving adaptations of the program including iv) reliance on passive disease surveillance (as
226 opposed to continued entomological surveillance in Phase 4 of the programme) and v)
227 generic innovations, efficiencies and economies of scale that reduce the cost base of the
228 programme by 50%. Further details on rationale for these scenarios and their
229 parameterisation are available in the Appendix page 3. All analyses were performed in R
230 version 3.6.1. with all code publicly available in the following GitHub repository
231 (https://github.com/obradu/Wolbachia_CE/tree/V1).

232 Results

233 *Wolbachia* programme costs

234 The results of our model to predict the cost of releasing *Wolbachia* mosquitoes in new areas
235 using existing programme budgets is shown in Figure 1. This model identified human
236 population density and programme phase as significant covariates of programme cost per
237 km² of release area ($p = 0.003$ and $p = 0.026$ respectively, two-sided t-test, Appendix page
238 2). Release material (eggs or adult mosquitoes) or national GDP per capita (as a proxy for
239 local labour costs) were not found to be significant ($p = 0.98$ and 0.31 respectively) but were
240 retained in the final model due to limited within site variance. Models with the response
241 variable of cost per km² gave superior cost data fit to models with a response variable of
242 cost per person, so were used throughout (Appendix page 2).

243 Each of the four candidate sites differs in size and human population density, comprising a
244 small city (Yogyakarta City), a large city (Jakarta) and two moderate-size urban-rural mixes
245 (Yogyakarta SAR and Bali, Table 1). Because we assume *Wolbachia* to be suitable only in
246 areas with density greater than 1,000 people per km², only 24.8% and 14.9% of the land
247 area in Yogyakarta SAR and Bali are eligible for *Wolbachia* release, compared to 100% in
248 urban areas, although these areas do still contain the majority of people (Table 1).

249 The estimated cost of an accelerated (10-year) *Wolbachia* programme ranges from \$5.8
250 million in Yogyakarta City to \$133.3 million in Jakarta (present value 2018 USD, Table 1).
251 While the urban sites have a smaller release area than their urban-rural mix counterparts,
252 the cost per km² of releasing in high density areas is much higher (Figure 1), however,
253 because more people are covered, urban areas lead to more favourable cost per person
254 covered (~\$12 vs \$14-21, Table 1).

255 Conducting releases over a longer sequenced programme (total programme length 20-year
256 vs 13-year) can reduce overall costs by 11%-38% (Table 1), but also delays benefits (Figure
257 2). In this analysis we assume 10 years of benefits for each area in which *Wolbachia*
258 mosquitoes are released because there is currently substantial uncertainty over costs and
259 effectiveness beyond 10 years (Figure 2). Should *Wolbachia* prove more durable than this,
260 accelerated programmes and their quicker acquisition of benefits would become more

261 preferable relative to sequenced programmes, however the challenges of their greater
262 upfront costs would remain.

263

264 Benefits

265 Combining health systems costs and societal costs (lost wages due to work absences
266 attributable to sickness and the value of life lost due to premature death), Indonesia's
267 national economic burden of dengue in 2017 has been estimated at \$681.26 million, [25]
268 with costs due to hospitalised non-fatal cases (44.7%), fatal cases (44.3%), ambulatory non-
269 fatal cases (5.7%) and non-medical cases (5.3%). [25] We predict substantial reductions in
270 dengue case and economic burden in all sites. As estimated in previous work, [16] long-term
271 average percentage reductions are likely to be highest in low transmission intensity
272 environments (87.2% reduction in Yogyakarta SAR vs 65.7% reduction in Jakarta, Table 2).
273 However, because *Wolbachia* programmes can achieve higher coverage in dense high
274 transmission intensity cities, the percentage reduction across the whole site area becomes
275 more favourable (65.7% in Jakarta vs 59.1% in Yogyakarta SAR and 52.4% in Bali). Medium
276 transmission intensity high density cities, such as Yogyakarta City are likely to see the
277 highest percentage reduction and may even see elimination (94.4%, 95% uncertainty
278 interval [95UI] 36.5%-100%).

279 The annual cost savings of averting these cases are substantial, ranging from \$980,000 (95UI
280 \$350,000 – \$2,170,000) in Yogyakarta City to \$27.1 million (95UI \$10.58 – \$49.35 million) in
281 Jakarta. As estimated in previous work, [25] these cost savings are divided approximately
282 equally between medical costs and societal costs.

283

284 Cost-effectiveness

285 Due to the heterogeneous nature of risk and cost, estimated cost-effectiveness values are
286 spatially variable (Table 3, Figure 3). Generally, cost-effectiveness is most favourable in high
287 density urban environments with gross cost-effectiveness (cost of averted disease cases not
288 included) reaching as favourable as \$1,100 per DALY averted in specific places (Figure 3C),
289 especially in a sequenced programme (Table 3). Although the overall gross cost-
290 effectiveness of the projected programmes in Yogyakarta SAR and Bali are less favourable
291 than their urban counterparts (Table 3), there are many sub-areas within these sites where

292 *Wolbachia* programmes could have equally as favourable cost-effectiveness (Figure 3B and
293 3D). This is most pronounced for the Yogyakarta SAR scenario where the surrounding urban
294 areas of Sleman, Bantul and the isolated towns of Sentol and Wonosari are predicted to be
295 highly cost effective (<\$1,700 / DALY) while many rural areas are less favourable. We even
296 predict some of these towns in Yogyakarta SAR to be more cost effective than Yogyakarta
297 City, however this result occurs only because we assume that the core resources (e.g.
298 laboratory and rearing facilities) that have already been paid for and developed for the
299 existing *Wolbachia* programme in Yogyakarta City can be reused for the surrounding areas
300 in Yogyakarta SAR.

301 When the health sector and societal costs of averted cases are deducted from the original
302 programme investment, *Wolbachia* becomes a cost-saving intervention in cities and a highly
303 cost-effective intervention elsewhere (Table 3 and Figure 4A). One dollar invested in
304 *Wolbachia* can return between \$1.35 and \$3.40 (95UI \$0.17 – \$9.67) in medical and societal
305 benefits depending on where the programme takes place (Figure 4A). In Jakarta, the
306 medical benefits alone are predicted to outweigh the cost of investment in *Wolbachia*
307 (Figure 4A).

308

309 **Sensitivity and uncertainty**

310 Our prediction that *Wolbachia* is cost saving is robust to a reasonable range of parameter
311 values (Figure 4B). In univariate sensitivity analysis of the 2.5 and 97.5 percentiles of the
312 true parameter value, only a low value of the baseline burden of dengue is sufficient to
313 prevent *Wolbachia* from becoming cost saving, and even then the programme is still highly
314 cost effective (\$1652 / DALY, Sequenced programme in Yogyakarta City, societal
315 perspective). Parameters for cost of the programme, cost per case and efficacy of the
316 intervention were less critical for overall cost-effectiveness than baseline burden due to the
317 higher uncertainty in the true burden of dengue.

318 Programmes are even predicted to be cost saving if substantial challenges occur during
319 deployment. If only 50% coverage were reached in the target area, resistance emerges after
320 five years or released mosquitoes are uncompetitive with wild-type mosquitoes, benefit-
321 cost ratios remain above 1 (Figure 4C, societal perspective). Furthermore, if these events do
322 occur, cost-effectiveness of the programme can still be recovered by addressing these

323 threats (Figure 4C and Appendix page 4-6). As *Wolbachia* programmes become more proven
324 over time it is expected that relaxed surveillance (relying on passive disease monitoring),
325 innovations and economies of scale will reduce the cost of deployment. These have the
326 potential to increase the benefit-cost ratio by as much as 47%, as long as they do not come
327 at the expense of avoiding to detect more damaging failures of the programme (Figure 4C).

328 Discussion

329 Here we use existing cost data to build a programmatic model for *wMel Wolbachia*. By
330 applying this model in Indonesia we show that this novel technology can be an economically
331 advantageous intervention for dengue control and predict under what circumstances it
332 might be most cost effective. Cost effectiveness of *Wolbachia* is predicted to be most
333 favourable in dense cities where a high concentration of people and dengue incidence allow
334 the high investment costs of *Wolbachia* to be quickly offset. In such areas, programmes can
335 become cost saving with benefit to cost ratios of 1.35-3.40, which are robust to our choice
336 of model parameters and difficulties in the programme. Finally, we show that *Wolbachia*
337 can also be cost effective in suburban and rural areas, particularly if they can utilise
338 programme infrastructure from nearby urban areas. This is particularly relevant for the
339 existing *Wolbachia* programme in Yogyakarta City and suggests that expansion to nearby
340 areas in Sleman and Bantul in Yogyakarta SAR should be considered.

341 Assessing the cost-effectiveness of novel rear and release vector control strategies is
342 important because of their high upfront costs but potentially long-term benefits. This makes
343 the cost-effectiveness dynamics of *wMel Wolbachia* more similar to mass vaccination than
344 conventional vector control. Like vaccination, this makes cost-effectiveness of *Wolbachia*
345 sensitive to the time horizon of the evaluation. *wMel Wolbachia* has been robustly
346 established in Cairns, Australia since early 2011 [26], hence our assumed 10 year benefit
347 time horizon. More research is required to understand the sustainability of *Wolbachia*
348 replacement in dengue-endemic countries with more complex *Aedes* population genetics
349 and higher virus and mosquito importation rates from outside areas [30].

350 A number of previous studies have attempted to estimate the cost-effectiveness of vector
351 control interventions for dengue [20, 31–34]. The methods used tend to fall into one of two
352 approaches: field trials or model-based assessments. Experimental and observational
353 control trials have been used to estimate cost-effectiveness (per DALY averted) for larvicides
354 in Cambodia (\$313) [31], community clear up campaigns (\$3,953) and ultra-low volume
355 spraying (\$4,472) in Mexico [33] and an integrated package of vector control interventions
356 in Sri Lanka (\$98) [34]. Short-term control trials with disease endpoints are likely to
357 overestimate effectiveness due to the effects of herd immunity and may mean
358 interventions delay rather than avert disease.

359 In response to this, model-based cost-effectiveness evaluations can be used to give a more
360 accurate estimate of long-term effectiveness of a particular intervention. However, because
361 long-term effectiveness is not easily measurable, such modelling studies often have to
362 assume a range of plausible efficacies with variable theoretical support. Modelling studies
363 have suggested larval control (\$615-1,267 / DALY) [32] and more generic packages of vector
364 control (\$679-1907 / DALY) [20] can also be cost effective depending on true effectiveness.
365 Finally, several models have predicted the cost-effectiveness of dengue vaccines [22, 35].
366 The cost-effectiveness of WHO's recommended test-and-vaccinate strategy in Indonesia in
367 2015 was 0.8 to 0.6 times the per capita GDP (i.e., \$2,700 and \$2,000) if dengue
368 seroprevalence rates at age 9 were 50% and 70%, respectively [22]. Despite vaccination
369 having a less favourable predicted cost-effectiveness than *Wolbachia*, it is likely both
370 vaccine and vector control will be necessary to achieve control in the highest transmission
371 areas. Further work is needed to understand how the economics of combinations of
372 interventions vary across transmission strata.

373 Given that *Wolbachia* is also not predicted to fully eliminate dengue virus transmission in
374 highly endemic settings [16, 17] and given that many countries already have established
375 dengue control programmes, there is a pressing need to understand how *Wolbachia*
376 interacts with other types of vector control and how the optimal package of interventions
377 may change in different environments. Modelling and mapping techniques are critical for
378 such investigations due to the impracticality of conducting field trials among the many
379 combinations of different interventions [36, 37].

380 Our approach to assessing the cost-effectiveness of *Wolbachia* combines the best currently
381 available evidence for the effect of *Wolbachia* on transmission [38] with a long-term
382 mathematical model [16] to overcome limitations of both of these approaches. This work
383 aims to provide an evidence-based first estimate that gives quantitative support behind the
384 decision to invest large sums of money in an intervention that is likely to have deferred but
385 substantial benefits. Using model-based estimates of the true case and economic burden of
386 dengue [16, 25] in Indonesia was a critical step in our approach. Using reported case data
387 would have significantly underestimated the cost-effectiveness of *Wolbachia* and more
388 research is needed to understand, adjust for and ultimately fill gaps in disease surveillance
389 [39].

390 This analysis was subject to a number of limitations. First, our model did not consider
391 logistical constraints that may exist in releasing *Wolbachia* infected mosquitoes at this scale.
392 The largest current planned releases of *Wolbachia* mosquitoes is in Medellin Colombia
393 where a sequenced programme will cover a combined 1.7 million people over 151km².
394 Reaching high coverage of *Wolbachia* for Jakarta's 11 million residents and 764 km² land
395 area, particularly over a three-year accelerated campaign, may not be logistically feasible.
396 New approaches to large scale community engagement and recruitment of release teams
397 need to be developed. There may also be constraints on the portability of assets, such as
398 centralised distribution of mosquitoes or laboratory testing, across areas as wide as Bali that
399 we did not consider. Second, cost data for existing *Wolbachia* releases were based on
400 budgeted costs; actual costs may differ by the end of the programme. Third, our analysis
401 only included the effects of *Wolbachia* on dengue, despite showing strong protective effects
402 against a range of other arboviral diseases [3–5]. Given chikungunya is also ubiquitous in
403 Indonesia [40] our predictions may underestimate the cost-effectiveness of *Wolbachia*.
404 Finally, it should be mentioned that the cost-effectiveness analysis presented here is
405 intended to form one part of the wider evidence base on whether or where *Wolbachia*
406 should be scaled up. To date, successful *Wolbachia* programmes have been underpinned by
407 sustained and robust engagement with both the community and local stakeholders [13, 41].
408 In this analysis we make clear assumptions about the success of establishing *Wolbachia* in a
409 target area, but clearly an assessment of feasibility of this aim is a necessary precursor to
410 assessments of cost-effectiveness.

411 The biggest strength of our analysis is the use of comprehensive, detailed spatiotemporal
412 models that incorporate the latest projections of dengue case and economic burden and the
413 likely impact *Wolbachia* could have on when deployed at scale. Given *Wolbachia* is an early
414 stage novel intervention, we have also endeavoured to include the broad range of
415 uncertainty that exists in each of these inputs and assess their impact overall cost-
416 effectiveness. Such comparisons are important if the high upfront investment costs of
417 *Wolbachia* are to be justified and these results can be used as part of the evidence base in
418 the decision to accelerate scale up of *Wolbachia* to address the growing needs of arboviral
419 control.

420 Conclusions

421 In conclusion, in this study we show that *Wolbachia* has the potential to be a highly cost
422 effective and even cost saving intervention, especially if targeted to high density cities
423 where the burden of dengue is concentrated. These findings are largely robust to
424 uncertainties in the long-term performance of *Wolbachia*, but further longitudinal field data
425 with epidemiological outcome measures are required to validate these predictions and
426 assess how cost-effectiveness changes when combined with other vector control
427 interventions and vaccines.

428 References

- 429 1. Bowman LR, Donegan S, McCall PJ. Is dengue vector control deficient in effectiveness or
430 evidence?: systematic review and meta-analysis. *PLoS Negl Trop Dis*. 2016;10:e0004551.
431 doi:10.1371/journal.pntd.0004551.
- 432 2. Ritchie SA, Staunton KM. Reflections from an old Queenslander: Can rear and release
433 strategies be the next great era of vector control? *Proceedings of the Royal Society B:*
434 *Biological Sciences*. 2019;286:20190973.
- 435 3. Walker T, Johnson PH, Moreira LA, Iturbe-Ormaetxe I, Frentiu FD, McMeniman CJ, et al.
436 The *wMel Wolbachia* strain blocks dengue and invades caged *Aedes aegypti* populations.
437 *Nature*. 2011;476:450–3. doi:10.1038/nature10355.
- 438 4. Aliota MT, Peinado SA, Velez ID, Osorio JE. The *wMel* strain of *Wolbachia* Reduces
439 Transmission of Zika virus by *Aedes aegypti*. *Sci Rep*. 2016;6:28792.
- 440 5. van den Hurk AF, Hall-Mendelin S, Pyke AT, Frentiu FD, McElroy K, Day A, et al. Impact of
441 *Wolbachia* on Infection with Chikungunya and Yellow Fever Viruses in the Mosquito Vector
442 *Aedes aegypti*. *PLoS Negl Trop Dis*. 2012;6:e1892. doi:10.1371/journal.pntd.0001892.
- 443 6. Nazni WA, Hoffmann AA, Afizah AN, Cheong YL, Mancini M V., Golding N, et al.
444 Establishment of *Wolbachia* strain *wAlbB* in Malaysian populations of *Aedes aegypti* for
445 dengue control. *Curr Biol*. 2019;29:1–8.
- 446 7. Zheng X, Zhang D, Li Y, Yang C, Wu Y, Liang X, et al. Incompatible and sterile insect
447 techniques combined eliminate mosquitoes. *Nature*. 2019;572:56–61.
- 448 8. Singapore National Environment Agency. Project *Wolbachia* Singapore. 2019.
449 [https://www.nea.gov.sg/corporate-functions/resources/research/wolbachia-aedes-](https://www.nea.gov.sg/corporate-functions/resources/research/wolbachia-aedes-mosquito-suppression-strategy/project-wolbachia-singapore)
450 [mosquito-suppression-strategy/project-wolbachia-singapore](https://www.nea.gov.sg/corporate-functions/resources/research/wolbachia-aedes-mosquito-suppression-strategy/project-wolbachia-singapore). Accessed 30 Sep 2019.

- 451 9. Mains JW, Kelly PH, Dobson KL, Petrie WD, Dobson SL. Localized Control of *Aedes aegypti*
452 (Diptera: *Culicidae*) in Miami, FL, via Inundative Releases of *Wolbachia*-Infected Male
453 Mosquitoes. *J Med Entomol*. 2019;56:1296–303. doi:10.1093/jme/tjz051.
- 454 10. Flores HA, O’Neill SL. Controlling vector-borne diseases by releasing modified
455 mosquitoes. *Nat Rev Microbiol*. 2018;16:508–18. doi:10.1038/s41579-018-0025-0.
- 456 11. Schmidt TL, Barton NH, Rašić G, Turley AP, Montgomery BL, Iturbe-Ormaetxe I, et al.
457 Local introduction and heterogeneous spatial spread of dengue-suppressing *Wolbachia*
458 through an urban population of *Aedes aegypti*. *PLOS Biol*. 2017;15:e2001894.
459 doi:10.1371/journal.pbio.2001894.
- 460 12. Garcia G de A, Sylvestre G, Aguiar R, da Costa GB, Martins AJ, Lima JBP, et al. Matching
461 the genetics of released and local *Aedes aegypti* populations is critical to assure *Wolbachia*
462 invasion. *PLoS Negl Trop Dis*. 2019;13:e0007023. doi:10.1371/journal.pntd.0007023.
- 463 13. O’Neill SL, Ryan PA, Turley AP, Wilson G, Retzki K, Iturbe-Ormaetxe I, et al. Scaled
464 deployment of *Wolbachia* to protect the community from dengue and other *Aedes*
465 transmitted arboviruses. *Gates Open Res*. 2018;2:36. doi:10.12688/gatesopenres.12844.2.
- 466 14. Anders KL. Growing evidence that the World Mosquito Program’s *Wolbachia* method
467 reduces dengue transmission. In: 68th Annual Meeting of the American Society of Tropical
468 Medicine and Hygiene. National Harbour, MD; 2019.
469 <https://www.abstractsonline.com/pp8/#!/7935/presentation/466>.
- 470 15. Anders KL, Indriani C, Ahmad RA, Tantowijoyo W, Arguni E, Andari B, et al. The AWED
471 trial (Applying *Wolbachia* to Eliminate Dengue) to assess the efficacy of *Wolbachia*-infected
472 mosquito deployments to reduce dengue incidence in Yogyakarta, Indonesia: study protocol
473 for a cluster randomised controlled trial. *Trials*. 2018;19:302. doi:10.1186/s13063-018-2670-
474 z.
- 475 16. O’Reilly KM, Hendrickx E, Kharisma DD, Wilastonegoro NN, Carrington LB, Elyazar IRF, et
476 al. Estimating the burden of dengue and the impact of release of *wMel Wolbachia*-infected
477 mosquitoes in Indonesia: a modelling study. *BMC Med*. 2019;17:172.
- 478 17. Ferguson NM, Kien DTH, Clapham H, Aguas R, Trung VT, Chau TNB, et al. Modeling the
479 impact on virus transmission of *Wolbachia*-mediated blocking of dengue virus infection of
480 *Aedes aegypti*. *Sci Transl Med*. 2015;7:279ra37. doi:10.1126/scitranslmed.3010370.
- 481 18. General Secretary of the Ministry of Health of Indonesia. Guidelines for Indonesian
482 health program with family approach (Pedoman umum program Indonesia sehat dengan

- 483 pendekatan keluarga). Jakarta: Kementerian Kesehatan Republik Indonesia; 2016.
- 484 [http://www.depkes.go.id/resources/download/lain/Buku Program Indonesia Sehat dengan](http://www.depkes.go.id/resources/download/lain/Buku%20Program%20Indonesia%20Sehat%20dengan%20Pendekatan%20Keluarga.pdf)
- 485 [Pendekatan Keluarga.pdf](http://www.depkes.go.id/resources/download/lain/Buku%20Program%20Indonesia%20Sehat%20dengan%20Pendekatan%20Keluarga.pdf).
- 486 19. World Mosquito Program Indonesia. Research as the evidence of deployment impact of
- 487 *Aedes aegypti* with *Wolbachia* to reduce the dengue transmission in Yogyakarta City (Riset
- 488 untuk membuktikan dampak Pelepasan *Aedes aegypti* ber-*Wolbachia* berskala luas pada
- 489 penurun. Yogyakarta, Indonesia; 2016.
- 490 20. Fitzpatrick C, Haines A, Bangert M, Farlow A, Hemingway J, Velayudhan R. An economic
- 491 evaluation of vector control in the age of a dengue vaccine. *PLoS Negl Trop Dis*.
- 492 2017;11:e0005785. doi:10.1371/journal.pntd.0005785.
- 493 21. Flasche S, Jit M, Rodríguez-Barrquer I, Coudeville L, Recker M, Koelle K, et al. The long-
- 494 term safety, public health impact, and cost-effectiveness of routine vaccination with a
- 495 recombinant, live-attenuated dengue vaccine (Dengvaxia): A model comparison study. *PLOS*
- 496 *Med*. 2016;13:e1002181. doi:10.1371/journal.pmed.1002181.
- 497 22. Coudeville L, Baurin N, Shepard DS. The potential impact of dengue vaccination with,
- 498 and without, pre-vaccination screening. *Vaccine*. :in press.
- 499 23. International Monetary Fund. World Economic Outlook Database, April 2017, section 5:
- 500 Report for Selected Countries and Subjects.
- 501 [https://www.imf.org/external/pubs/ft/weo/2018/01/weodata/weorept.aspx?pr.x=43&pr.y](https://www.imf.org/external/pubs/ft/weo/2018/01/weodata/weorept.aspx?pr.x=43&pr.y=19&sy=2017&ey=2017&scsm=1&ssd=1&sort=country&ds=.&br=1&c=512%2C672%2C914%2C946%2C612%2C137%2C614%2C546%2C311%2C962%2C213%2C674%2C911%2C676%2C193%2C548%2C122%2C556%2C912%2C6)
- 502 [=19&sy=2017&ey=2017&scsm=1&ssd=1&sort=country&ds=.&br=1&c=512%2C672%2C914](https://www.imf.org/external/pubs/ft/weo/2018/01/weodata/weorept.aspx?pr.x=43&pr.y=19&sy=2017&ey=2017&scsm=1&ssd=1&sort=country&ds=.&br=1&c=512%2C672%2C914%2C946%2C612%2C137%2C614%2C546%2C311%2C962%2C213%2C674%2C911%2C676%2C193%2C548%2C122%2C556%2C912%2C6)
- 503 [%2C946%2C612%2C137%2C614%2C546%2C311%2C962%2C213%2C674%2C911%2C676%2](https://www.imf.org/external/pubs/ft/weo/2018/01/weodata/weorept.aspx?pr.x=43&pr.y=19&sy=2017&ey=2017&scsm=1&ssd=1&sort=country&ds=.&br=1&c=512%2C672%2C914%2C946%2C612%2C137%2C614%2C546%2C311%2C962%2C213%2C674%2C911%2C676%2C193%2C548%2C122%2C556%2C912%2C6)
- 504 [C193%2C548%2C122%2C556%2C912%2C6](https://www.imf.org/external/pubs/ft/weo/2018/01/weodata/weorept.aspx?pr.x=43&pr.y=19&sy=2017&ey=2017&scsm=1&ssd=1&sort=country&ds=.&br=1&c=512%2C672%2C914%2C946%2C612%2C137%2C614%2C546%2C311%2C962%2C213%2C674%2C911%2C676%2C193%2C548%2C122%2C556%2C912%2C6). Accessed 23 Jun 2018.
- 505 24. O'Neill SL, Ryan PA, Turley AP, Wilson G, Retzki K, Iturbe-Ormaetxe I, et al. Scaled
- 506 deployment of *Wolbachia* to protect the community from *Aedes* transmitted arboviruses.
- 507 *Gates Open Res*. 2018;2:36. doi:10.12688/gatesopenres.12844.1.
- 508 25. Wilastonegoro N, Kharisma D, Laksanawati I, Halasa-Rappel Y, Brady O, Shepard D. Cost
- 509 of dengue illness in Indonesia: from hospital to non-medical settings. *Am J Trop Med Hyg*.
- 510 2019;:submitted.
- 511 26. Hoffmann AA, Montgomery BL, Popovici J, Iturbe-Ormaetxe I, Johnson PH, Muzzi F, et al.
- 512 Successful establishment of *Wolbachia* in *Aedes* populations to suppress dengue
- 513 transmission. *Nature*. 2011;476:454–7. doi:10.1038/nature10356.
- 514 27. Neumann PJ, Russell LB, Siegel JE, Prosser LA, Krahn M, Gold MR. Using Cost-

- 515 Effectiveness Analysis in Health and Medicine: Experiences since the Original Panel. In:
516 Neumann PJ, Sanders GD, Russell LB, Siegel JE, Ganiats TG, editors. Cost-Effectiveness in
517 Health and Medicine. 2nd editio. Oxford University Press; 2017. p. 1–37.
518 28. WorldPop. Indonesia 100m populaiton. 2018.
519 <http://www.worldpop.org.uk/data/summary/?doi=10.5258/SOTON/WP00114>. Accessed 21
520 Dec 2018.
- 521 29. Hoffmann AA, Ross PA, Rašić G. *Wolbachia* strains for disease control: ecological and
522 evolutionary considerations. *Evol Appl*. 2015;8:751–68. doi:10.1111/eva.12286.
- 523 30. Huber K, Le Loan L, Hoang TH, Ravel S, Rodhain F, Failloux AB. Genetic differentiation of
524 the dengue vector, *Aedes aegypti* (Ho Chi Minh City, Vietnam) using microsatellite markers.
525 *Mol Ecol*. 2002;11:1629–35.
- 526 31. Suaya JA, Shepard DS, Chang M-S, Caram M, Hoyer S, Socheat D, et al. Cost-effectiveness
527 of annual targeted larviciding campaigns in Cambodia against the dengue vector *Aedes*
528 *aegypti*. *Trop Med Int Health*. 2007;12:1026–36. doi:10.1111/j.1365-3156.2007.01889.x.
- 529 32. Luz PM, Vanni T, Medlock J, Paltiel AD, Galvani AP. Dengue vector control strategies in
530 an urban setting: an economic modelling assessment. *Lancet*. 2011;377:1673–80.
531 doi:10.1016/S0140-6736(11)60246-8.
- 532 33. Mendoza-Cano O, Hernandez-Suarez CM, Trujillo X, Ochoa Diaz-Lopez H, Lugo-Radillo A,
533 Espinoza-Gomez F, et al. Cost-effectiveness of the strategies to reduce the incidence of
534 dengue in Colima, México. *Int J Environ Res Public Health*. 2017;14:890.
535 doi:10.3390/ijerph14080890.
- 536 34. Liyanage P, Rocklöv J, Tissera H, Palihawadana P, Wilder-Smith A, Tozan Y. Evaluation of
537 intensified dengue control measures with interrupted time series analysis in the Panadura
538 Medical Officer of Health division in Sri Lanka: a case study and cost-effectiveness analysis.
539 *Lancet Planet Heal*. 2019;3:e211–8.
- 540 35. de Soárez PC, Silva AB, Randi BA, Azevedo LM, Novaes HMD, Sartori AMC. Systematic
541 review of health economic evaluation studies of dengue vaccines. *Vaccine*. 2019;37:2298–
542 310.
- 543 36. Brady OJ, Slater HC, Pemberton-Ross P, Wenger E, Maude RJ, Ghani AC, et al. Role of
544 mass drug administration in elimination of *Plasmodium falciparum* malaria: a consensus
545 modelling study. *Lancet Glob Heal*. 2017;5:e680-687.
- 546 37. Yakob L, Funk S, Camacho A, Brady O, Edmunds WJ. *Aedes aegypti* control through

547 modernized, integrated vector management. PLoS Curr.
548 2017;;10.1371/currents.outbreaks.45deb8e03a438c4d088afb4.
549 doi:10.1371/currents.outbreaks.45deb8e03a438c4d088afb4fafae8747.
550 38. Carrington LB, Tran BCN, Le NTH, Luong TTH, Nguyen TT, Nguyen PT, et al. Field- and
551 clinically derived estimates of *Wolbachia*-mediated blocking of dengue virus transmission
552 potential in *Aedes aegypti* mosquitoes. Proc Natl Acad Sci U S A. 2018;115:361–6.
553 doi:10.1073/pnas.1715788115.
554 39. WHO. A Toolkit for national dengue burden estimation. Geneva; 2018.
555 <https://www.who.int/denguecontrol/resources/WHO-CDS-NTD-VEM-2018.05/en/>.
556 40. Harapan H, Michie A, Mudatsir M, Nusa R, Yohan B, Wagner AL, et al. Chikungunya virus
557 infection in Indonesia: A systematic review and evolutionary analysis. BMC Infectious
558 Diseases. 2019;19:243.
559 41. Kolopack PA, Parsons JA, Lavery J V. What makes community engagement effective?:
560 Lessons from the Eliminate Dengue Program in Queensland Australia. PLoS Negl Trop Dis.
561 2015;9:e0003713.
562
563

564 List of abbreviations

565

566	CEA	Cost Effectiveness Analysis
567	DALY	Disability Adjusted Life Year
568	GDP	Gross Domestic Product
569	PPP	Purchasing Power Parity
570	SAR	Special Autonomous Region
571	USD	United States Dollar
572	WHO	World Health Organization
573	WMP	World Mosquito Programme
574		

575 Declarations

576

577 Ethics approval and consent to participate

578 Not applicable

579

580 Consent for publication

581 Not applicable

582

583 Availability of data and materials

584 All data used in this analysis is publicly available and can be accessed in the related paper
585 O'Reilly et al. [16] or in the Appendix of this paper. All code to reproduce our analysis is
586 publicly available in the following GitHub repository:
587 (https://github.com/obradyl/Wolbachia_CE/tree/V1).

588

589 Competing interests

590 The authors declare that they have no competing interests

591

592 Funding

593 OJB was funded by a Sir Henry Wellcome Fellowship funded by the Wellcome Trust
594 (206471/Z/17/Z) and a grant from the Bill and Melinda Gates Foundation (OP1183567)
595 which also supports KMO. NNW, DDK and DSS are funded by a grant from the Bill & Melinda
596 Gates Foundation (OPP1187889). The funders had no role in the study design, data
597 collection and analysis, decision to publish or preparation of the manuscript.

598

599 Authors' contributions

600 OJB, DSS conceived and designed the study. KMO, OJB, EH, DDK, NNW and LSB analysed the
601 data. OJB, DDK, NNW, KMO, EH, LSB, LY and DSS drafted and revised the manuscript. All
602 authors read and approved the final manuscript.

603

604 Acknowledgements

605 The design of the study was developed independently, but benefitted from a series of in-
606 depth discussions with representatives from WMP global headquarters in Melbourne
607 Australia (including Cameron Simmons, Scott O'Neil and Reynold Dias) and field site
608 coordinators from UGM, Yogyakarta city, Indonesia (including Adi Uterini). The investigators

609 had access to all the data and had final responsibility for the decision to submit for
 610 publication.

611

612 Tables

613

614 Table 1

	Existing area		Candidate sites				
	Yogyakarta City	Yogyakarta SAR	Jakarta		Bali		
Residents (millions)	0.46	3.24	11.19		4.08		
% of people covered by <i>Wolbachia</i>	100	65.9	100		59.7		
Area (km²)	37.24	3,666.21	764.48		6,476.03		
% of area eligible for <i>Wolbachia</i>	100	24.8	99.9		14.9		
Density in covered area (persons/km²)	12,351	2,352	14,647		2,532		
Total cost (US\$ millions)	<i>Accel.</i>	<i>Seq.</i>	<i>Accel.</i>	<i>Seq.</i>	<i>Accel.</i>	<i>Seq.</i>	<i>Accel.</i>
	5.84 (5.81 - 5.87)	27.41 (27.37 - 27.45)	30.68 (30.65 - 30.73)	83.33 (83.22 - 83.49)	133.30 (133.14 - 133.49)	34.88 (34.81 - 34.93)	51.66 (51.57 - 51.72)
Cost per person covered	12.70 (12.63 -	12.83 (12.81 - 12.85)	14.36 (14.35 - 14.38)	7.45 (7.44 - 7.46)	11.92 (11.90 - 11.93)	14.32 (14.29 - 14.34)	21.21 (21.17 - 21.23)

	12.77)						
--	--------	--	--	--	--	--	--

615

616 Table 2

	Committed area	Scale up scenario		
	Yogyakarta City	Remaining Yogyakarta SAR	Jakarta	Bali
Baseline cases per year (area wide)	14,488 (2,955 – 47,858)	93,604 (21,527 – 249,843)	444,528 (97,542 – 1,189,217)	117,840 (27,862 – 324,114)
Post <i>Wolbachia</i> cases per year (area wide)	722 (0 – 30,140)	36,674 (6,805 – 180,567)	127,712 (0 – 749,850)	62,033 (9,810 – 237,984)
Area-wide percent reduction (%)	94.4 (36.5 – 100)	59.1 (25.6 – 69.6)	65.7 (36.7 – 100)	52.4 (24.2 – 66.9)
Percent reduction within treated areas	94.4 (36.5 – 100)	87.2 (37.2 – 100)	65.7 (36.7 – 100)	82.8 (37.3 – 100)
Averted medical costs per year (millions USD)*	0.46 (0.14 – 1.19)	2.16 (0.67 – 4.70)	12.91 (4.49 – 25.08)	2.58 (0.82 – 5.11)
Averted societal costs per year (millions USD)*	0.52 (0.21 – 0.98)	2.36 (1.05 – 4.28)	14.17 (6.09 – 24.27)	2.77 (1.23 – 4.74)

617

618 Table 3

	Committed area	Scale up scenario		
	Yogyakarta City	Remaining Yogyakarta SAR	Jakarta	Bali
		<u>Accelerated introduction</u>		
Gross \$/DALY averted	\$ 1,831 (892 – 4,522)	\$ 2,133 (1,048 – 4,953)	\$ 1,566 (857 – 3,244)	\$ 2,996 (1,599 – 6,778)
Net \$/DALY averted (including averted medical and societal costs)	\$ -543 (-1,419 – 1,976)	\$ -242 (-1,275 – 2,438)	\$ -839 (-1,500 – 731)	\$ 671 (-719 – 4,219)
		<u>Sequenced introduction</u>		
Gross \$/DALY averted	\$ 1,519 (737 – 3,732)	\$ 2,168 (1,064 – 5,042)	\$ 1,111 (611 – 2,307)	\$ 2,366 (1,264 – 5,379)

Net \$/DALY averted (including health sector and societal costs)	\$ -862 (-1,572 – 1,185)	\$ -210 (-1,258 – 2,528)	\$ -1,280 (-1,772 – -207)	\$ 64 (-1,050 – 2,834)
---	-----------------------------	-----------------------------	------------------------------	---------------------------

619 Table legends

620 Table 1: Baseline characteristics and model-predicted release costs for current and future
 621 release areas. Prices are in present value 2018 USD. Figures in brackets represent 95%
 622 uncertainty intervals. All costs are discounted at 3% per annum. Accel. denotes accelerated;
 623 Seq. denotes sequenced.

624
 625 Table 2: Predicted per year benefits of Wolbachia programmes in four sites. Only eligible
 626 areas (at least 1,000 people per km²) receive treatment. All costs are in 2018 US dollars and
 627 are not discounted. Figures in brackets represent 95% uncertainty intervals.

628
 629 Table 3: Predicted cost-effectiveness of Wolbachia at the end of the programme.
 630 Accelerated and sequenced programmes correspond to completing roll out in 3 and 10
 631 years, respectively. Only eligible areas (at least 1,000 people per km²) receive treatment. All
 632 costs are in present value 2018 US dollars. All costs and benefits are discounted at a rate of
 633 3% per annum. Net costs include cost offsets for medical and societal benefits from averted
 634 cases. Figures in brackets represent 95% uncertainty intervals.

635
 636

637 Figure legends

638
 639 Figure 1: The fitted relationship between human population density and projected cost of
 640 deployment of Wolbachia per km² (A) and cost per person (B). All axes are on log₁₀ scales.
 641 The cost per km² model fit mean (solid lines) and standard error (dashed lines) for each
 642 programme phase are shown. Circle area is proportional to size of release area in each site.

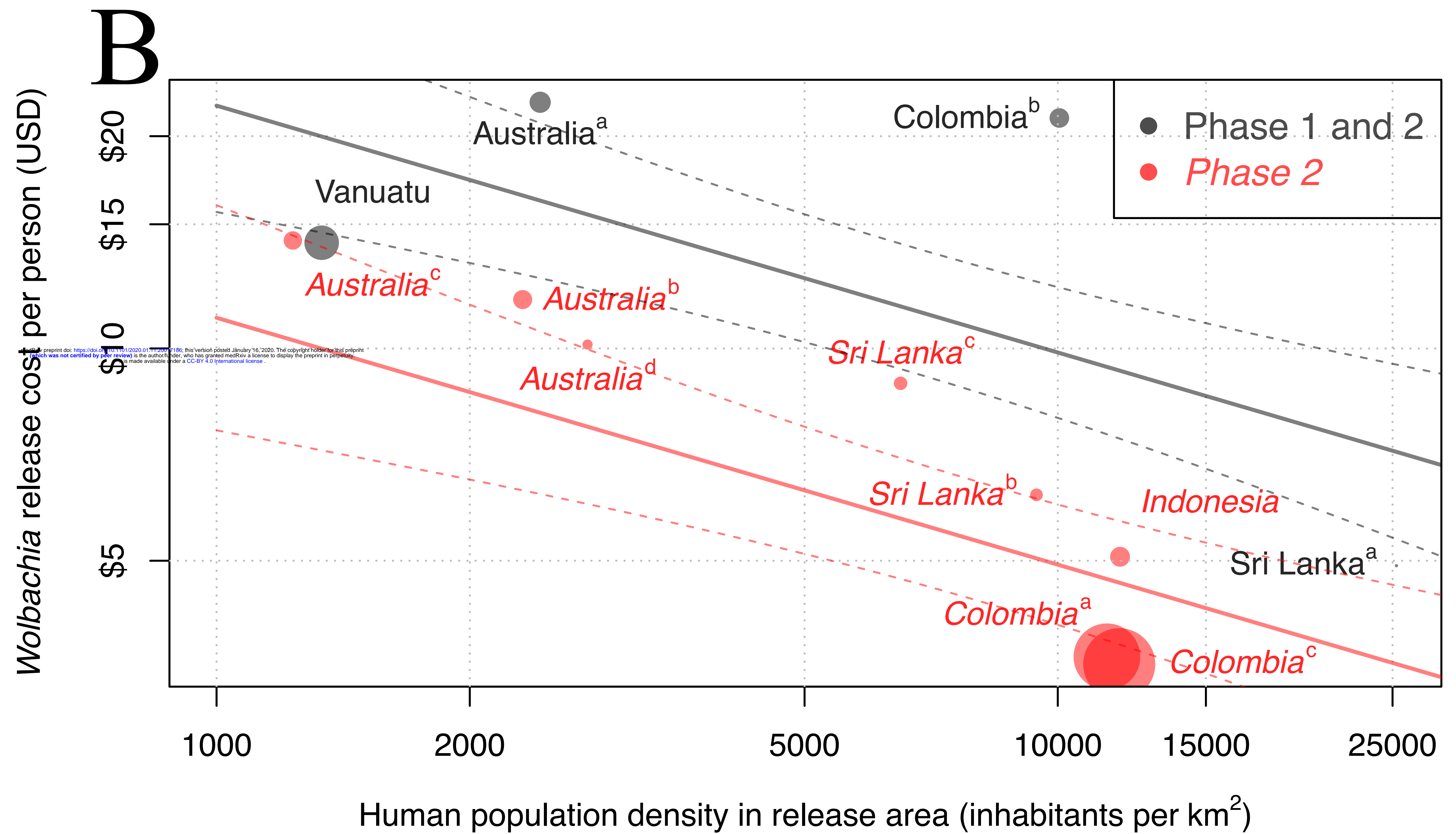
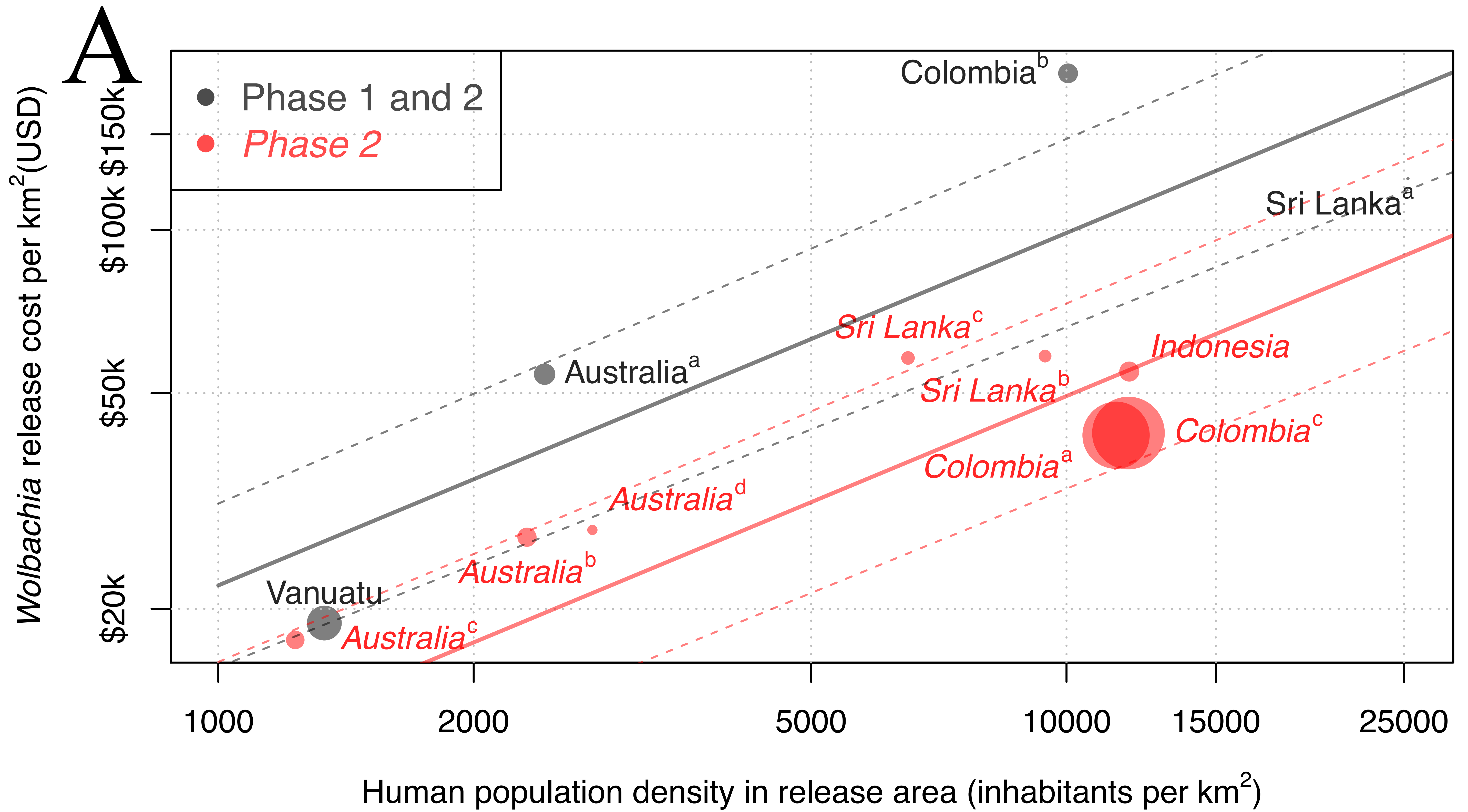
643
 644 Figure 2: Distribution of cumulative costs and savings over time in an accelerated (3-year,
 645 left panel) and sequenced (10-year, right panel) roll out in Yogyakarta City in 2018 USD.
 646 Uncertainty represents uncertainty in programme cost and intervention effectiveness

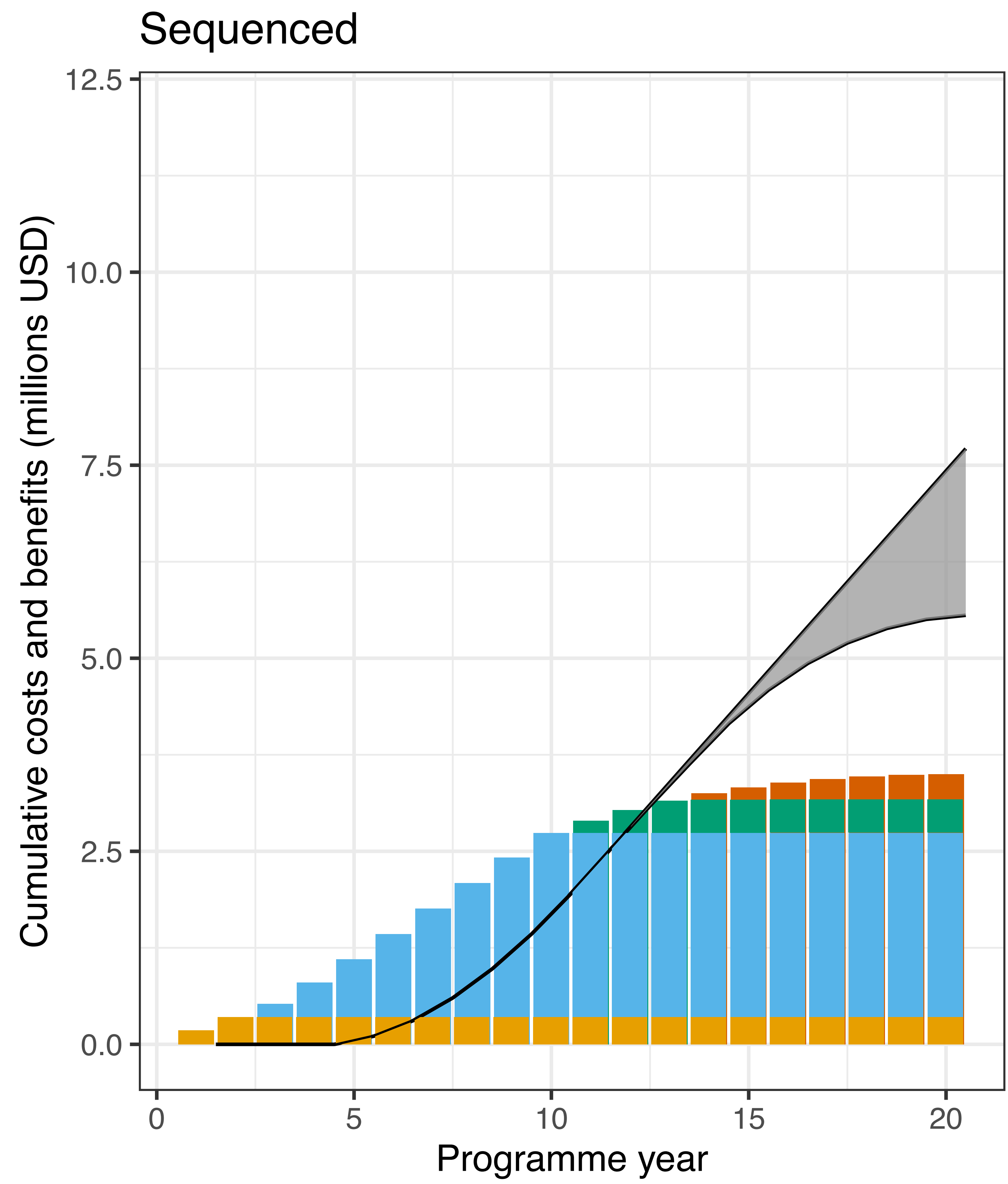
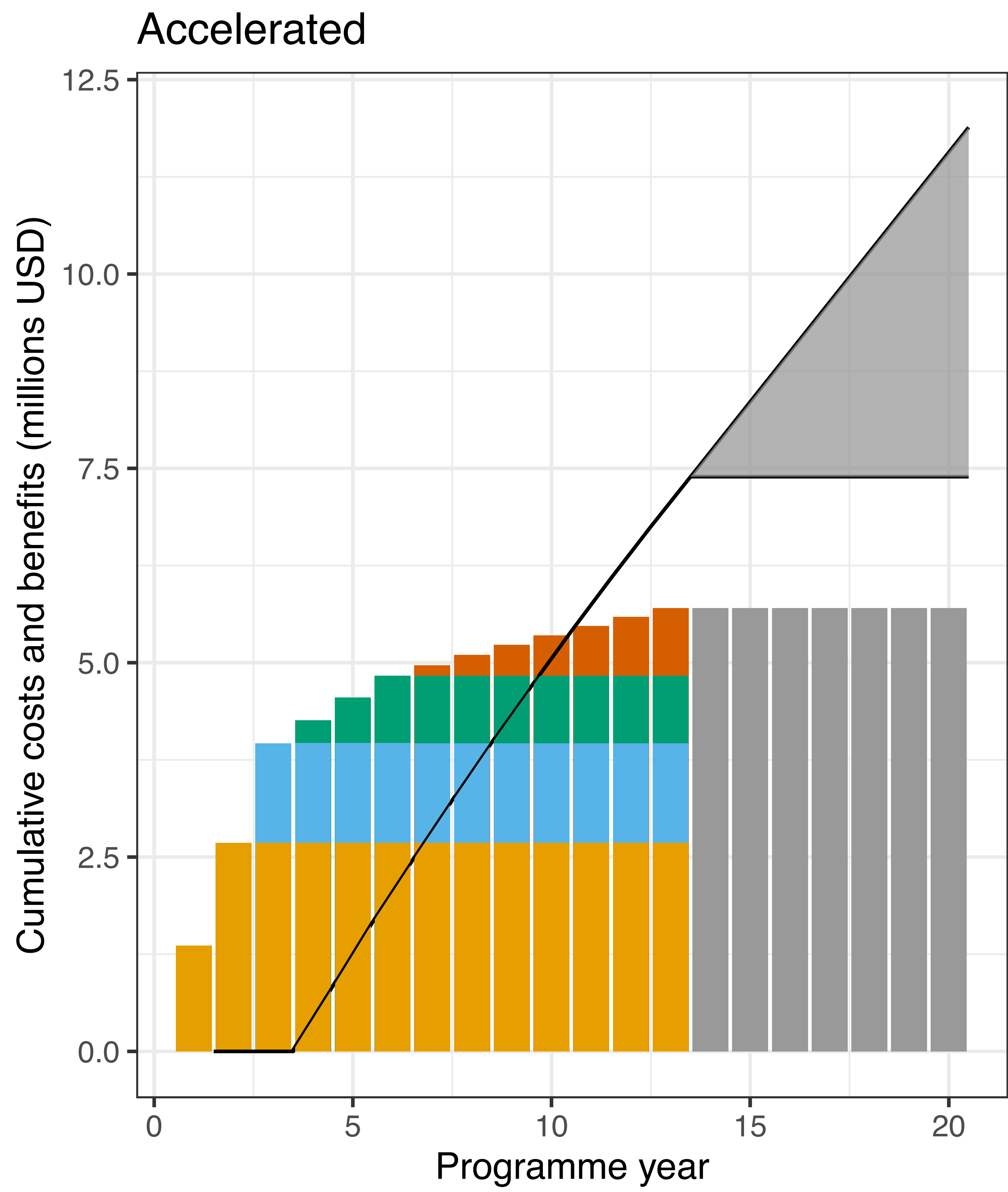
647 beyond the 10-year post-release time horizon used in this analysis. All costs and benefits are
648 in present-day value 2018 USD discounted at 3% per annum.

649
650 Figure 3: Maps of the gross cost-effectiveness of accelerated Wolbachia releases in
651 Yogyakarta City (A), Yogyakarta SAR (B), Jakarta (C) and Bali (D). Cost effectiveness is
652 measured in present value 2018 USD per Disability Adjusted Life Year (DALY) averted with
653 green areas being most favourable. Select areas of interest and the national orientation of
654 these sites (E) are shown for reference, more detailed background maps are available in the
655 Appendix pages 9-13. Site A falls within site B and is marked in a red outline.

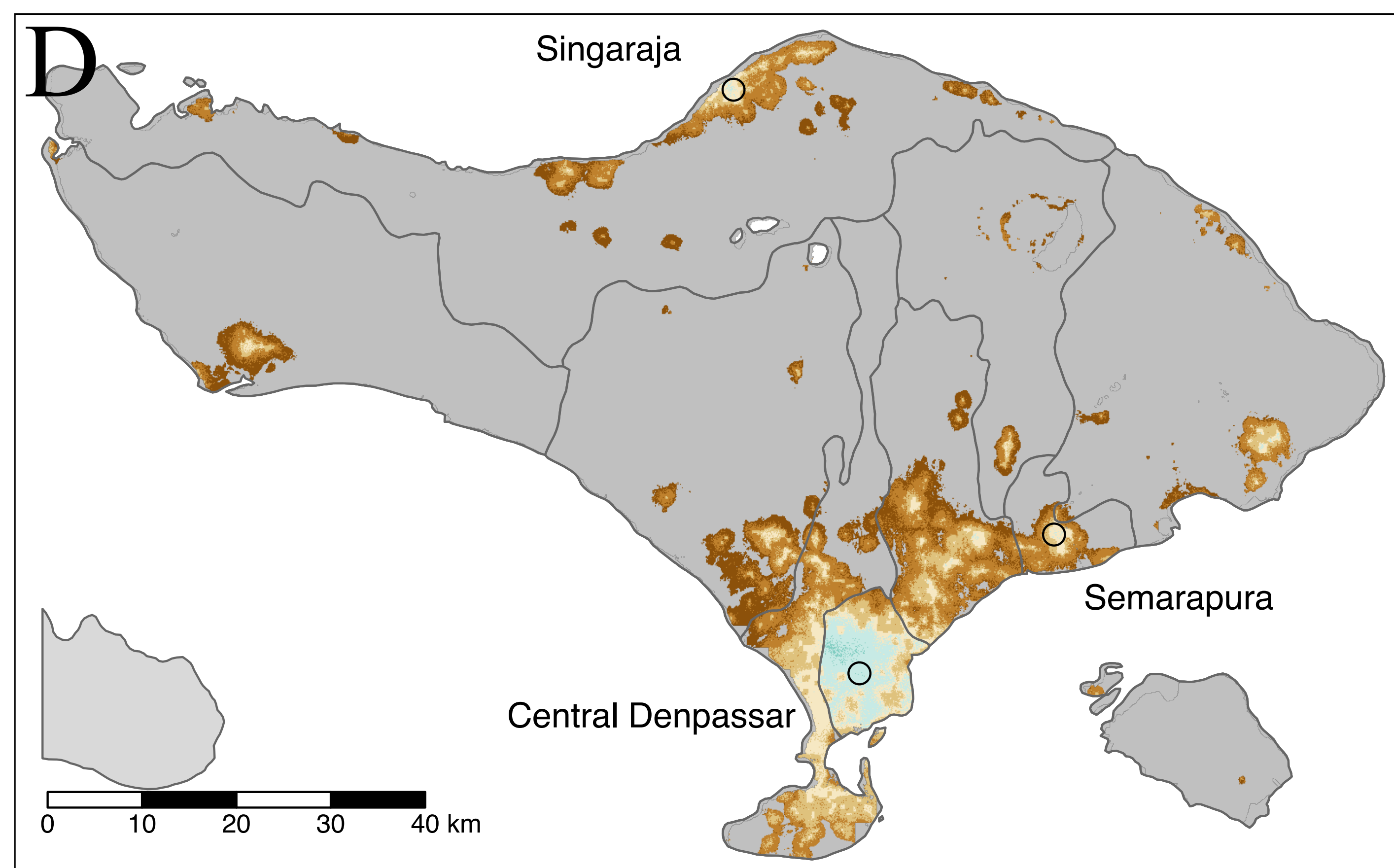
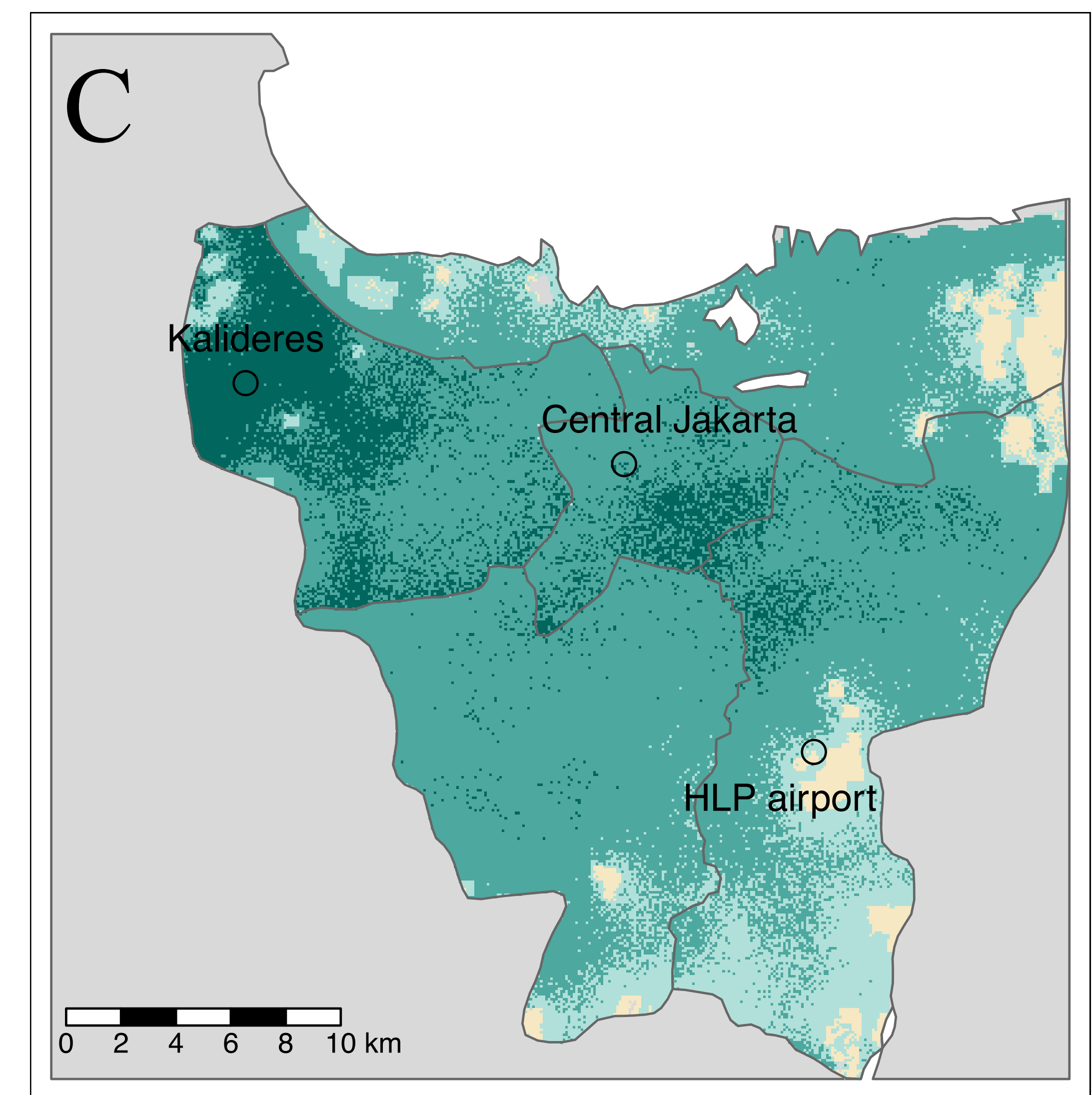
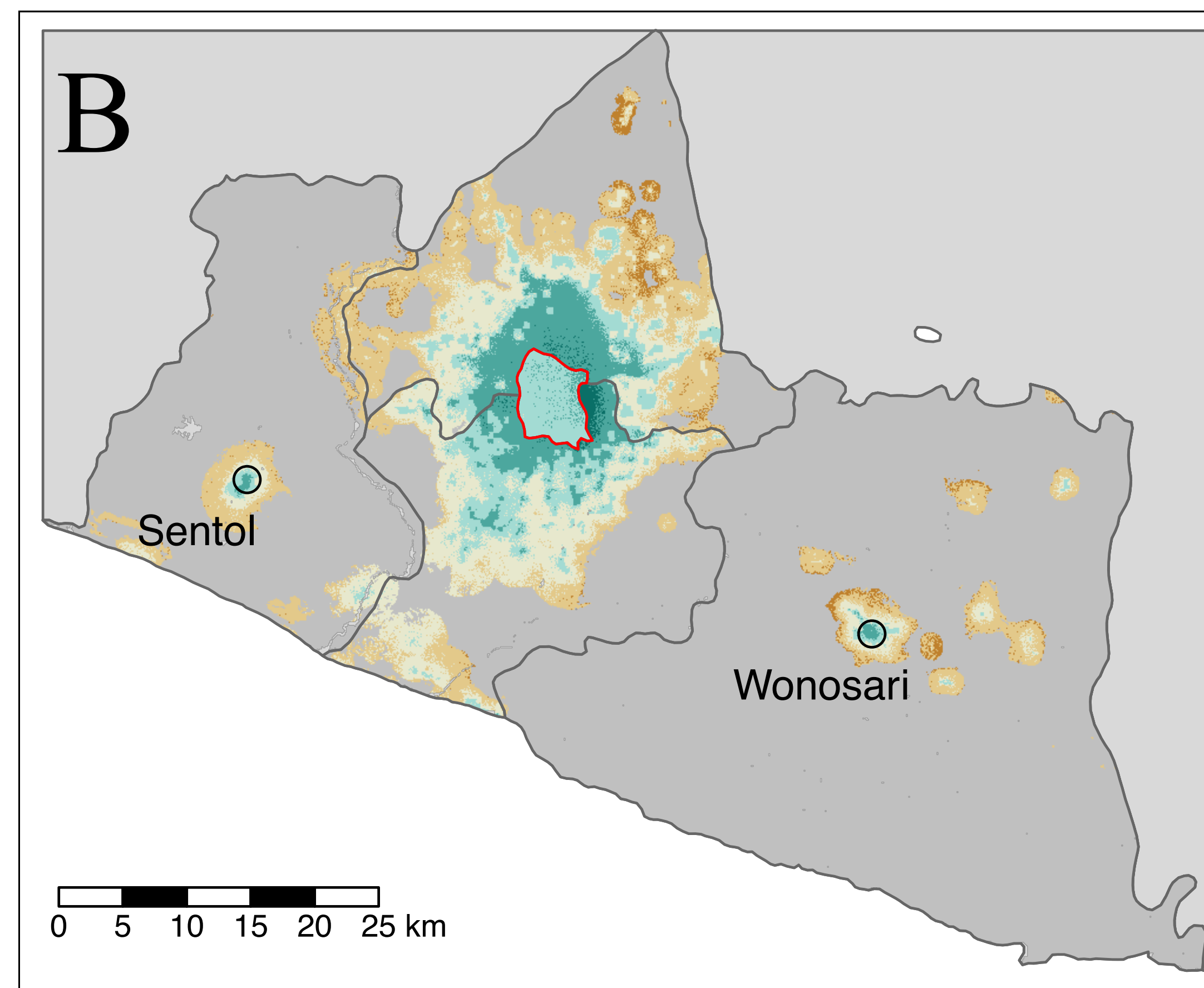
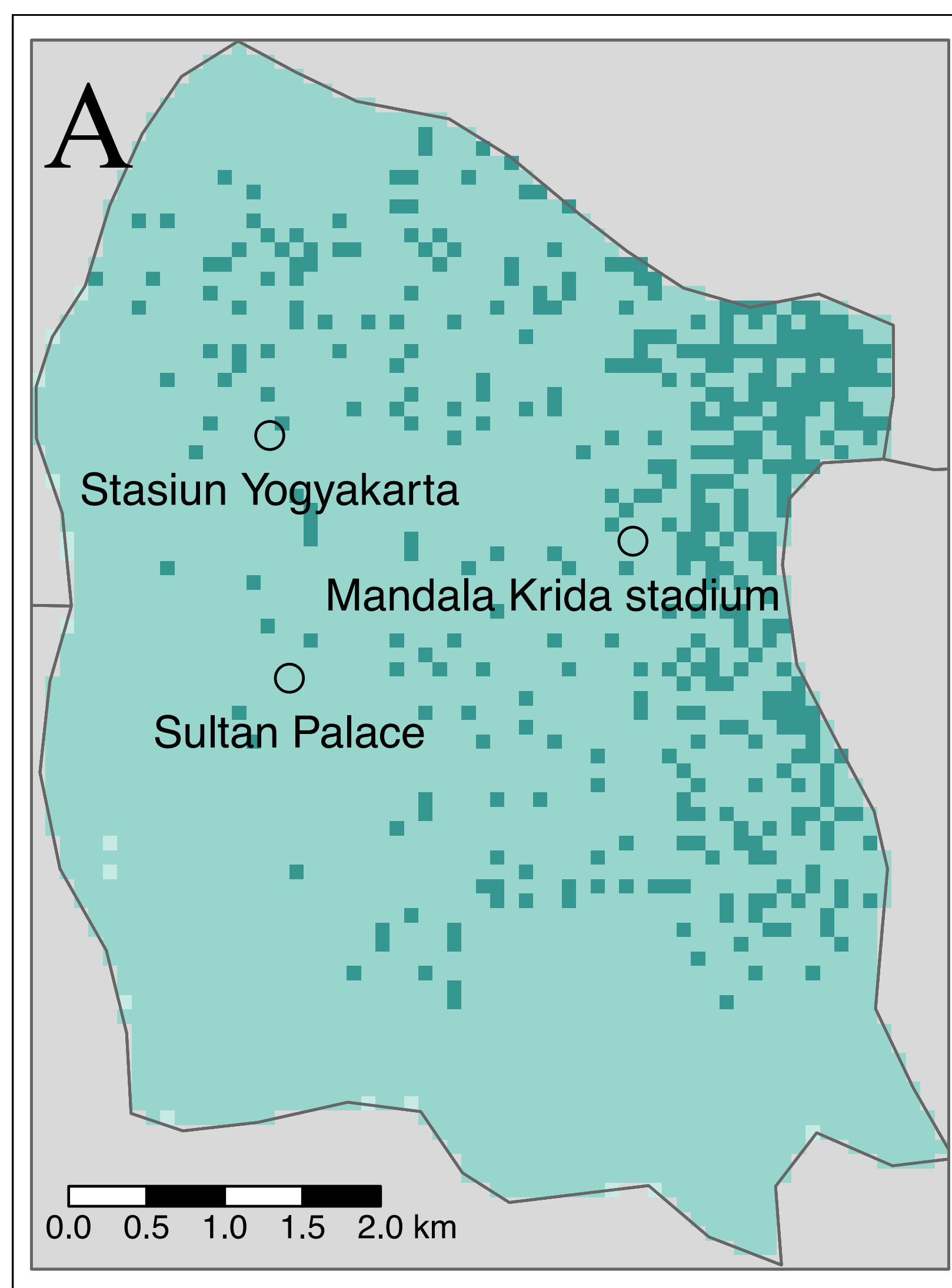
656
657 Figure 4: Benefit-cost ratios and their sensitivity. 4A) The predicted benefit-cost ratios of a
658 sequenced release programme in each site disaggregated by type of benefit. A benefit-cost
659 ratio of 1.0 indicates cost saving. 4B) Sensitivity of cost-effectiveness of a sequenced release
660 in Yogyakarta City if the 2.5% value (orange) or 97.5% value (green) were used as opposed
661 to the median value for selected parameters. Net cost-effectiveness is in 2018 present day
662 value USD per Disability Adjusted Life Year averted and includes offsets from health sector
663 and societal perspectives. 4C) Sensitivity of benefit-cost ratios (BCRs) to future challenges or
664 changes to a sequenced release in Yogyakarta City. Green dots show potential cost-saving
665 measures, red dots unaddressed challenges to the programme and yellow dots addressed
666 challenges to the programme. Dots above the BCR = 1.0 line are cost saving from the
667 societal perspective.

668

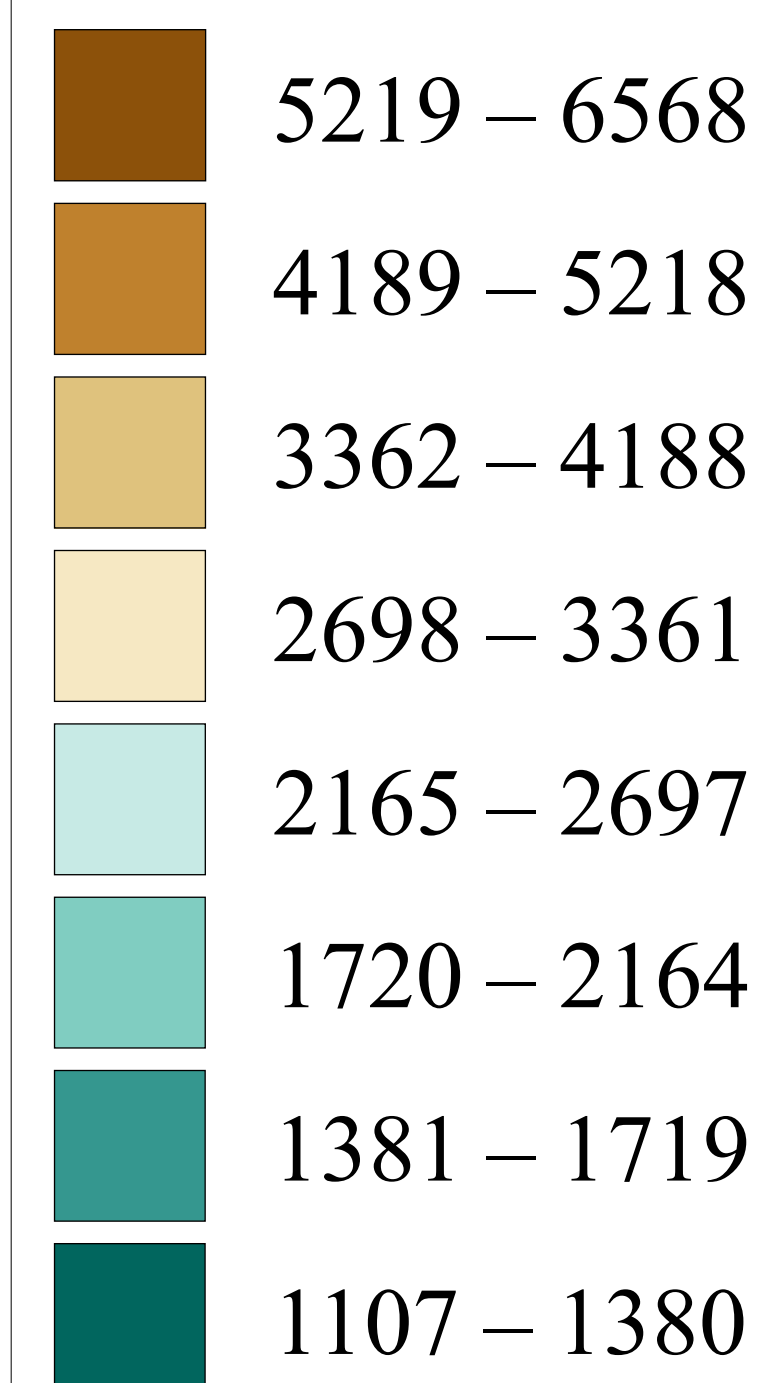




medRxiv preprint doi: <https://doi.org/10.1101/2020.01.11.20171466>; this version posted January 16, 2020. The copyright holder for this preprint (which was not certified by peer review) is the author/funder, who has granted medRxiv a license to display the preprint in perpetuity. It is made available under a CC-BY 4.0 International license.



Gross cost effectiveness
(USD per DALY averted)



Population density
<1,000 people per km²

Outside of study area

