

1 **rs641738C>T near *MBOAT7* promotes steatosis, NASH, fibrosis and**
2 **hepatocellular carcinoma in non-alcoholic fatty liver disease: a meta-**
3 **analysis**

4

5 Kevin Teo¹, Kushala W. M. Abeysekera², Leon Adams^{3,4}, Elmar Aigner⁵,
6 Rajarshi Banerjee⁶, Priyadarshi Basu⁷, Thomas Berg⁸, Pallav Bhatnagar⁹,
7 Stephan Buch¹⁰, Ali Canbay¹¹, Sonia Caprio¹², Ankita Chatterjee⁷, Yii-Der Ida
8 Chen¹³, Abhijit Chowdhury¹⁴, Christian Datz¹⁵, Dana de Gracia Hahn¹,
9 Johanna K. DiStefano¹⁶, Jiawen Dong¹, Amedine Duret¹, EU-PNAFLD
10 Investigators*, Connor Emdin¹⁷, Madison Fairey¹, Glenn S Gerhard¹⁸, GOLD
11 Consortium*, Xiuqing Guo¹³, Jochen Hampe¹⁰, Matthew Hickman², Lena
12 Heintz¹⁹, Christian Hudert²⁰, Harriet Hunter¹, Matt Kelly⁵, Julia Kozlitina²¹,
13 Marcin Krawczyk^{19,22}, Frank Lammert¹⁹, Claudia Langenberg²³, Joel Lavine²⁴,
14 Lin Li²⁵, Hong Kai Lim¹, Panu Luukkonen^{26,27,28}, Phillip E. Melton^{29,30}, Trevor
15 A. Mori³, Constantinos A. Parisinos³¹, Sreekumar G Pillai⁹, Faiza Qayyum³²,
16 Matthias C. Reichert¹⁹, Stefano Romeo^{33,34,35}, Jerome Rotter¹³, Yu Ri Im¹,
17 Nicola Santoro¹², Clemens Schafmayer³⁶, Elizabeth K. Speliotes^{37,38}, Stefan
18 Stender³², Felix Stickel³⁹, Christopher D. Still⁴⁰, Pavel Strnad⁴¹, Kent D.
19 Taylor¹³, Anne Tybjærg-Hansen³², Giuseppina Rosaria Umamo^{12,42}, Mrudula
20 Utukuri¹, Luca Valenti^{43,44}, Nicholas J. Wareham²³, Julia Wattacheril⁴⁵,
21 Hannele Yki-Järvinen^{26,27}, Jake P. Mann²³

22

23 **Affiliations**

- 24 1. Clinical School of Medicine, University of Cambridge, Cambridge, UK
25 2. MRC Integrative Epidemiology Unit (IEU), University of Bristol, Bristol, United
26 Kingdom

- 27 3. Medical School, Faculty of Medical and Health Sciences, University of Western
28 Australia, Perth, Australia
- 29 4. Department of Hepatology, Sir Charles Gairdner Hospital, Perth, WA, Australia
- 30 5. Department of Internal Medicine I, Paracelsus Medical University, Salzburg, Austria
- 31 6. Perspectum Diagnostics Ltd., Oxford, UK.
- 32 7. National Institute of Biomedical Genomics, Kalyani, India
- 33 8. Division of Hepatology, Clinic and Polyclinic for Gastroenterology, Hepatology,
34 Infectiology and Pneumology, University Clinic Leipzig
- 35 9. Eli Lilly and Company, Indianapolis IN.
- 36 10. Medical Department 1, University Hospital Dresden, Technische Universität Dresden
37 (TU Dresden), Dresden, Germany
- 38 11. Gastroenterology, Hepatology and Infectiology, Otto-von-Guericke University
39 Magdeburg, Magdeburg, Germany
- 40 12. Yale University, Department of Pediatrics, New Haven, CT
- 41 13. Translational Genomics and Population Sciences Lundquist Institute; Harbor-UCLA
42 Medical Center
- 43 14. Institute of Post Graduate Medical Education And Research, Kolkata, India
- 44 15. Department of Internal Medicine, General Hospital Oberndorf, Teaching Hospital of
45 the Paracelsus Medical University Salzburg, Oberndorf, Austria
- 46 16. Diabetes and Fibrotic Disease Unit Translational Genomics Research Institute
47 (TGen)
- 48 17. Program in Medical and Population Genetics, Broad Institute of Harvard and MIT,
49 Boston, MA
- 50 18. Department of Medical Genetics and Molecular Biochemistry, Lewis Katz School of
51 Medicine at Temple University, Philadelphia, PA
- 52 19. Department of Medicine II, Saarland University Medical Center, Saarland University,
53 Homburg, Germany
- 54 20. Center for Chronically Sick Children, Charité - Universitätsmedizin Berlin, Berlin,
55 Germany
- 56 21. Eugene McDermott Center for Human Growth and Development, University of Texas
57 Southwestern Medical Center, Dallas, TX, USA
- 58 22. Laboratory of Metabolic Liver Diseases, Department of General, Transplant and Liver
59 Surgery, Laboratory of Metabolic Liver Diseases, Centre for Preclinical Research,
60 Medical University of Warsaw, Warsaw, Poland
- 61 23. MRC Epidemiology Unit, Institute of Metabolic Science, University of Cambridge, UK.
- 62 24. Department of Pediatrics, Columbia University, New York, USA
- 63 25. BioStat Solutions Inc, Frederick, Maryland, USA
- 64 26. Minerva Foundation Institute for Medical Research, Helsinki, Finland.
- 65 27. Department of Medicine, University of Helsinki and Helsinki University Hospital,
66 Helsinki, Finland
- 67 28. Yale University School of Medicine, New Haven, Connecticut, US.
- 68 29. The Curtin UWA Centre for Genetic Origins of Health and Disease, Faculty of Health
69 and Medical Sciences, Curtin University, The University of Western Australia, Perth,
70 WA, Australia
- 71 30. School of Pharmacy and Biomedical Sciences, Faculty of Health Sciences, Curtin
72 University, Perth, WA, Australia
- 73 31. Institute of Health Informatics, Faculty of Population Health Sciences, University
74 College London, London, UK
- 75 32. Department of Clinical Biochemistry, Rigshospitalet Copenhagen University Hospital
76 Copenhagen, Denmark
- 77 33. Department of Molecular and Clinical Medicine, University of Gothenburg, Sweden
- 78 34. Cardiology Department, Sahlgrenska University Hospital, Gothenburg, Sweden
- 79 35. Clinical Nutrition Unit, Department of Medical and Surgical Sciences, University
80 Magna Graecia, Catanzaro, Italy
- 81 36. Department of Visceral and Thoracic Surgery, Kiel University, Kiel, Germany Thomas
82 Berg: Department of Internal Medicine, University Hospital Leipzig, Leipzig, Germany
- 83 37. Division of Gastroenterology and Hepatology, Department of Medicine, University of
84 Michigan Health System Ann Arbor MI.
- 85 38. Department of Computational Medicine and Bioinformatics, University of Michigan
86 Medical School Ann Arbor MI.

- 87 39. Department of Gastroenterology and Hepatology, University Hospital of Zurich,
88 Switzerland
89 40. Geisinger Obesity Institute, Danville, PA 17822, United States
90 41. Medical Clinic III, University Hospital RWTH Aachen, Aachen, Germany
91 42. Department of the Woman, the Child, of General and Specialized Surgery, University
92 of Campania Luigi Vanvitelli, Naples Italy
93 43. Department of Pathophysiology and Transplantation, Università degli Studi di Milano
94 44. Translational Medicine, Department of Transfusion Medicine and Hematology,
95 Fondazione IRCCS Ca' Granda Ospedale Maggiore Policlinico Milano, Milan, Italy
96 45. Department of Medicine, Center for Liver Disease and Transplantation, Columbia
97 University College of Physicians and Surgeons, New York Presbyterian Hospital,
98 New York, New York 10032, USA
99 *A list of contributors is included in the Acknowledgements

100

101 Keywords: *MBOAT7*, fibrosis, NAFLD, triglyceride, diabetes, ALSPAC

102

103 **Footnote page**

104

105 Contact information: Dr Jake P. Mann, University of Cambridge, Department
106 of Paediatrics, Cambridge, United Kingdom. jm2032@cam.ac.uk, T: +44 1223
107 763480, F: +44 1223 336996

108

109 Abbreviations (in order of appearance):

110 NAFLD, non-alcoholic fatty liver disease; NAFL; non-alcoholic fatty liver;
111 NASH, non-alcoholic steatohepatitis; HDL, high-density lipoprotein; HOMA-IR,
112 homeostatic model assessment of insulin resistance; BMI, body mass index;
113 ALT, alanine aminotransferase; CI, confidence interval; GGT, gamma-
114 glutamyl transferase; OR, odds ratio; *PNPLA3*, patatin-like phospholipase
115 domain containing protein 3; *TM6SF2*, transmembrane 6 superfamily member
116 2; *TMC4*, transmembrane channel-like 4; *MBOAT7*, membrane bound O-
117 acyltransferase domain containing 7.

118

119 Financial support: JPM is supported by a Wellcome Trust Fellowship
120 (216329/Z/19/Z) and a Children's Liver Disease Foundation grant. NIH grants:
121 R01HD028016 (SC), R01DK111038 (SC), R01DK114504 (NS), DK091601
122 (JKD), UL1TR001105 (JK). This study was supported by the German Federal
123 Ministry for Education and Research (BmBF) through the Livers Systems
124 Medicine (LiSyM) project. This work was supported by grants from the Swiss
125 National Funds (SNF no. 310030_169196) and the Swiss Foundation for
126 Alcohol Research (SSA) to FS. This Raine Study was supported by the
127 National Health and Medical Research Council of Australia [grant numbers
128 403981, 353514 and 572613]. The UK Medical Research Council and

129 Wellcome (Grant ref: 102215/2/13/2) and the University of Bristol provide core
130 support for ALSPAC. ALSPAC GWAS data was generated by Sample
131 Logistics and Genotyping Facilities at Wellcome Sanger Institute and LabCorp
132 (Laboratory Corporation of America) using support from 23andMe. A
133 comprehensive list of grants funding is available on the ALSPAC website
134 ([http://www.bristol.ac.uk/alspac/external/documents/grant-](http://www.bristol.ac.uk/alspac/external/documents/grant-acknowledgements.pdf)
135 [acknowledgements.pdf](http://www.bristol.ac.uk/alspac/external/documents/grant-acknowledgements.pdf)); This research was specifically funded by grants from
136 MRC and Alcohol Research UK (MR/L022206/1) and NIH (5R01AA018333-
137 05) to KWMA & MH. LV was supported by MyFirst Grant AIRC n.16888,
138 Ricerca Finalizzata Ministero della Salute RF-2016-02364358, Ricerca
139 corrente Fondazione IRCCS Ca' Granda Ospedale Maggiore Policlinico, LV
140 and AG. received funding from the European Union (EU) Programme Horizon
141 2020 (under grant agreement No. 777377) for the project LITMUS-“ Liver
142 Investigation: Testing Marker Utility in Steatohepatitis”. German Federal
143 Ministry of Education and Research (BMBF LiSyM 031L0051 to F.L.) PL is
144 supported by grants from the Sigrid Jusélius Foundation and the Novo
145 Nordisk Foundation. The Fenland study was funded by grants to the MRC
146 Epidemiology Unit (MC UU12015/1, MC UU 12015/5). RB and MK are
147 employees of and shareholders in Perspectum Diagnostics Ltd. CAP is
148 funded by a Wellcome Trust Clinical PhD Programme (206274/Z/17/Z).

149

150

151 **ABSTRACT**

152 A common genetic variant near *MBOAT7* (rs641738C>T) has been previously
153 associated with hepatic fat and advanced histology in non-alcoholic fatty liver

154 disease (NAFLD), however, these findings have not been consistently
155 replicated in the literature. Therefore, we aimed to establish whether rs641738
156 is a risk factor for NAFLD through meta-analysis. Data from 134,015
157 participants (7,692 with liver biopsies and 50,680 with imaging) was included
158 in the meta-analysis. The minor T-allele of rs641738C>T was associated with
159 higher liver fat on CT/MRI using an additive genetic model (+0.05 standard
160 deviations [95% CI: 0.01 – 0.09], p=0.025), and with an increased risk of
161 NAFLD (per-allele OR: 1.08 [95% CI: 1.01 - 1.15]), nonalcoholic
162 steatohepatitis (OR: 1.11 [95% CI: 1.02 - 1.21]), advanced fibrosis (OR: 1.14
163 [95% CI: 1.05 - 1.23]), and hepatocellular carcinoma (OR: 1.43 [95% CI: 1.22
164 - 1.67]) in adults with NAFLD. Sub-group analysis did not demonstrate a
165 difference in Caucasians and non-Caucasians. Rs641738C>T was not
166 associated with markers of insulin resistance but was associated with higher
167 risk of stroke in the UK Biobank. These data validate rs641738C>T near
168 *MBOAT7* as a risk factor for the development, activity, and stage of NAFLD
169 including hepatocellular carcinoma.

170

171

172

173 Abstract word count: 192

174

175 **Conflict of interest:** Connor Emdin reports personal fees from Navitor

176 Pharma and Novartis.

177

178

179 **INTRODUCTION**

180 Since the first genome-wide association study (GWAS) of liver fat (1), more
181 than 20 genetic single nucleotide variants (SNVs) have been associated with
182 non-alcoholic fatty liver disease (NAFLD)(2). These studies have deepened
183 our understanding of the condition, its heritability, and its relationship with
184 cardio-metabolic disease.

185

186 Rs641738C>T near *MBOAT7* (membrane bound O-acyltransferase domain
187 containing 7) was initially identified as a genome-wide significant risk locus for
188 alcohol-related cirrhosis(3). It has since been implicated in the pathogenesis
189 of NAFLD(4), hepatocellular carcinoma(5), as well as in fibrosis development
190 in chronic hepatitis B and C.

191

192 This SNV is located a few hundred base pairs downstream of the 3'
193 untranslated region of *MBOAT7*, which belongs to a family of genes that code
194 for specific acyl donors and acceptors. *MBOAT7* encodes
195 lysophosphatidylinositol acyltransferase 1 (LPIAT1), which contributes to the
196 regulation of free arachidonic acid in cells(6). Rs641738C>T is associated
197 with lower hepatic expression of *MBOAT7* at both the mRNA(7) and protein
198 level(4). Given its role in inflammatory lipid pathways, most mechanistic work
199 relating to rs641738 has focused on *MBOAT7*.

200

201 In NAFLD, the rs641738 variant was first demonstrated to be associated with
202 increased hepatic fat content and severity of fibrosis in individuals of
203 European descent(4). Proton magnetic resonance spectroscopy data from

204 2736 individuals showed a modest increase in hepatic fat in those with TT-
205 genotype (4.1%) compared to those with CT- (3.6%) or CC-genotype (3.5%)
206 (p=.005). Follow-up studies of European subjects corroborated the initial
207 findings, and suggested a role in development of hepatocellular
208 carcinoma(8,9). However, these results were not replicated in adults of other
209 genetic ancestries(4,10–12) or in children(13). It is recognised that
210 investigation of candidate genes in relatively small cohorts can generate false-
211 positive findings.

212 In addition, biallelic loss of function mutations in *MBOAT7* cause autosomal
213 recessive mental retardation 57 (OMIM #617188) and no liver phenotype has
214 been reported in these patients to date(14), however, rare likely pathogenic
215 variants in *MBOAT7* are associated with HCC in NAFLD(15). In summary, the
216 association between rs641738 and hepatic fat content, as well as its effects
217 on severity of NAFLD, remain unclear. Moreover, the broader metabolic
218 effects of this SNV, including its association with diabetes and cardiovascular
219 outcomes, have not been assessed.

220

221 Here, we conducted a large meta-analysis of published and unpublished data
222 to determine if rs641738 influences the development or stage of NAFLD and
223 associated cardio-metabolic phenotypes.

224

225 **PATIENTS AND METHODS**

226

227 **Data sources and study selection**

228 Two data sources were included in the meta-analysis: published studies (and
229 abstracts) and unpublished GWAS (or targeted genotyping) data.

230

231 Published studies were sourced through Medline and Embase using the
232 search terms “(*MBOAT7* or membrane-bound-o-acyltransferase) or (rs641738
233 or rs626283) or (*TMC4*)”. There were no restrictions on date or language, and
234 the study selection included all original studies including AASLD Liver Meeting
235 and EASL meeting abstracts. The search was completed on 1st October 2019.

236 Reference lists of relevant publications were also reviewed. Titles and
237 abstracts were screened for eligibility independently by two authors, with
238 inclusion/exclusion criteria applied to potentially eligible full texts.

239

240 A search was conducted for all GWAS in NAFLD, NASH, and steatosis.

241 Authors of all potentially relevant GWAS were contacted to request extraction
242 of data regarding rs641738C>T. To assess for cardiometabolic phenotype
243 associations, Phenoscanner(16) and GeneATLAS(17) were searched for
244 summary statistics from published GWAS.

245

246 HuGENet guidelines were followed throughout. This study was prospectively
247 registered on PROSPERO Database of Systemic Reviews
248 (CRD42018105507) Available from:

249 http://www.crd.york.ac.uk/PROSPERO/display_record.php?ID=CRD42018105

250 507

251

252 **Inclusion and exclusion criteria**

253 Cohort and case-control studies related to NAFLD were included if genotyping
254 of rs641738C>T (or other SNVs in linkage disequilibrium [LD, $R^2 > 0.8$]) was
255 conducted and data on one of the outcomes of interest were reported. Review
256 articles, *in vitro* studies, and investigations involving animal, fish, and
257 invertebrates were excluded. Studies which investigated liver disease of other
258 etiologies were also excluded.

259

260 **Data collection**

261 For each study, data on participant demographics (sex, age, ethnicity) were
262 collated. Hepatic steatosis or NAFLD (as diagnosis) was evaluated as a
263 dichotomous variable where radiological assessment (liver ultrasound,
264 controlled attenuation parameter [CAP, with cut-off $>240\text{m/s}$], CT, MRI) were
265 used. Hepatic fat content (from CT, MRS, MRI, PDFF), serum lipid profile,
266 fasting insulin, and alanine aminotransferase levels were collected as
267 continuous variables. Hepatic fat content was also assessed using semi-
268 quantitative scoring in the Fenland cohort, as previously described(18), and
269 using CAP. Histology data were extracted according to the NASH Clinical
270 Research Network scoring system and, where not otherwise diagnosed by a
271 pathologist's assessment, NASH was defined using the Fatty Liver Inhibition
272 of Progression (FLIP) algorithm. The above data were collected for each
273 genotype separately (CC, CT, and TT).

274

275 Phenoscanner was used to assess for disease associations with
276 rs641738C>T at $P < 0.01$. Phenotype associations were filtered for those
277 related to cardio-metabolic and liver disease.

278

279 The authors of 21 published studies were contacted for additional data, all of
280 whom replied. Several studies reported outcomes from overlapping cohorts:
281 ref (4) and ref (19); ref (9) and ref (20). In these instances, data only from the
282 larger of the overlapping cohorts were included in analyses.

283

284 **Cohorts with genome-wide data**

285 The authors of 10 potentially relevant GWAS (and cohort studies with
286 genome-wide data) were contacted, of which 9 replied and data were included
287 from 7.. Densely imputed genotyping data were available for rs641738C>T in
288 all with >0.98 call rate. These cohorts have been described elsewhere and
289 detailed description of the quality control processes for genome-wide data is
290 available in their original descriptions(1,21,30,31,22–29), but in brief, single
291 nucleotide polymorphisms (SNP) with Hardy-Weinberg equilibrium p-values
292 $< 1 \times 10^{-6}$ were excluded prior to imputation. Imputation was performed for
293 variants with mean allele frequencies $>.01$ and with minimum imputation
294 quality of >0.3 .

295 Previously unpublished data was included from the Avon Longitudinal Study
296 of Parents and Children (ALSPAC)(30–32). This is a prospective, longitudinal
297 study that originally enrolled 14,541 pregnancies with expected delivery dates
298 between 1st April 1991-31st December 1992. After enrolment of 913 additional

299 children at age 7, the total sample size is 15,454 pregnancies, resulting in
300 15,589 fetuses. Of these 14,901 were alive at 1 year of age. Ethical approval
301 for the study was obtained from the ALSPAC Ethics and Law Committee and
302 the Local Research Ethics Committees. Data included in this meta-analysis
303 was from individuals who had attended a study visit between 22 and 26 years
304 of age for transient elastography measurement with controlled attenuation
305 parameter (CAP). Please note that the ALSPAC study website contains
306 details of all the data that is available through a fully searchable data
307 dictionary and variable search tool
308 (<http://www.bristol.ac.uk/alspac/researchers/our-data>). Data was included for
309 meta-analysis where a CAP measurement was recorded and the participant
310 had genotyping data for rs641738C>T, which left 2,919 individuals for
311 inclusion.

312 Unpublished data from the UK BioBank was extracted under Application ID
313 9914 ('Determining the Outcomes of People with Liver Disease').

314

315 **Study quality assessment**

316 Two reviewers independently assessed risk of bias in each study by applying
317 the Cochrane Risk of Bias in Cohort Studies tool.

318

319 **Statistical Analysis:**

320 For dichotomous outcomes, the effect statistic was calculated as an odds ratio
321 between groups. Genetic association analyses were performed using an
322 additive model to estimate the effect per T-allele as almost all included studies
323 had used this model.

324 For analysis of effect on liver fat, data were inverse normalized and an
325 additive genetic model (coding the number of T alleles as 0, 1, and 2) was
326 used with linear regression, adjusted for age, sex, and principal components
327 of genetic ancestry (where available). In addition, data from the GOLD
328 Consortium were adjusted for number of alcoholic drinks consumed.
329 Continuous quantitative liver fat data (from CT, MRI, MRS, or PDFF) and
330 semi-quantitative data (ultrasound and CAP) were analyzed separately.
331 For other continuous variables, effect summary was calculated as a mean
332 difference between CC and TT groups.
333 Meta-analysis was performed using random effects throughout.
334 Summary statistics were reported with 95% confidence intervals (CI). Data
335 from paediatric and adult studies were analyzed separately. Sub-analysis was
336 performed using only studies with Caucasian (Non-Finnish or Finnish
337 European ethnicity) where data were available from at least four studies. This
338 sub-analysis was selected due to initial identification of this variant in
339 Caucasian individuals, further sub-analysis by ethnicity may be affected by
340 differences in linkage disequilibrium between genetic ancestries.
341 Leave-one-out sensitivity analysis was performed for all outcomes using
342 additive model of inheritance and random effects.
343 Heterogeneity between groups was described using the Q statistic and I^2 .
344 Bias was assessed using Egger's test and visually using funnel plots where
345 more than 5 studies were included. $P < 0.025$ (i.e. $P < 0.05/2$) was considered
346 statistically significant due to testing outcomes twice: in individuals of all
347 ethnicities and Caucasians only. Analysis was performed using STATAv14 for
348 Windows (StataCorp. 2015. Stata Statistical Software: Release 14. College

349 Station, TX: StataCorp LP), DistillerSR Forest Plot Generator from Evidence
350 Partners (<https://evidencepartners.com/resources/forest-plot-generator/>),
351 GraphPad Prism (v8.0 for Mac, GraphPad Software, La Jolla California, USA),
352 and MetaGenyo(33).

353

354

355 **RESULTS**

356 Database search identified 405 abstracts, of which 18 studies were included.

357 In addition, unpublished data were extracted from 12 cohorts (Table 1,

358 Supplementary Fig. 1, and Supplementary Table 1).

Study Age group	Genetic ancestry (country)	Study design and sample size (N)	Female, n (%)	Features and patient characteristics	Liver biopsy (N)
Published					
Di Sessa, 2018; Paediatric (34)	Non-Finnish European (Italy)	Cases-only Hospital-based N=1002	466 (46.5%)	Children with hepatic steatosis measured by US	NA
Di Costanzo, 2018; Adult (35)	Non-Finnish European (Italy)	Case-control N=445	150 (33.7%)	Hepatic steatosis measured by US	NA
Dongiovanni, 2018b; Adult (36)	Mixed: Non-Finnish European and Finnish European	Cases-only N=1,388 (LBC)	728 (52.4%)	NAFLD diagnosed by LB (LBC)	1515
Lin, 2018; Paediatric (37)	East Asian (China)	Population-based N=831	257 (31.4%)	Hepatic steatosis measured by US	NA
Viitasalo, 2016; Paediatric (38)	Finnish European (Finland)	Population-based N=512	222 (47.5%)	Population cohort of children with measurement of ALT	NA
Koo, 2018; Adult (10)	East Asian (Korea)	Case-control Hospital-based N=525	264 (50.3%)	Adults with NAFLD diagnosed by LB, or US/MRI/CT	416
Published and unpublished data					
Hudert, 2018; Paediatric (13)	Non-Finnish European (Germany)	Case-control Hospital-based N=270	92 (34%)	Patients: children with NAFLD diagnosed by LB Controls: healthy population (adult) controls	70
Mann, 2018a; Adult (24)	Non-Finnish European	Population cohort N=10,934	5,823 (53.2%)	Hepatic steatosis measured by US	NA

	(England)				
Mann, 2018b; Paediatric (39)	Non-Finnish European (Italy)	Hospital-based N=67	34 (50.7%)	Children with NAFLD diagnosed by LB	67
Umano, 2018; Paediatric (12)	Mixed: Non- Finnish European, African American, Hispanic (USA)	Cases-only Hospital-based N=860	509 (59.2%)	Hepatic steatosis measured by MRI	NA
Krawczyk, 2018; Adult (20)	Non-Finnish European (Germany)	Cases-only N=237	24 (38.1%)	Adults with NAFLD diagnosed by LB, or US/MRI/CT	63
Krawczyk, 2017; Adult (9)	Non-Finnish European (Germany)	Cases-only N=515	280 (54.4%)	Adults with NAFLD diagnosed by LB, or US/MRI/CT	320
Kawaguchi, 2018; Adult (25)	East Asian (Japan)	Case-control Mixed hospital- and population- based N=8,608	5111 (59.6%)	Patients: Adults with NAFLD diagnosed by LB Controls: healthy population controls	936
Dongiovanni, 2018; Adult (19)	Mixed: Non- Finnish European, African American, Hispanic (USA)	Population cohort: N= 4,570 (DHS), Cases-only Hospital-based: N=1,515 (LBC)	3,330 (54.7%)	Hepatic steatosis measured by H-MRS (DHS) or NAFLD diagnosed by LB (LBC)	1515

Mancina, 2016; Adult (4)	Mixed: Non-Finnish European, African American, Hispanic (USA)	Population cohort: N= 3,854 (DHS) Cases-only Hospital-based: N=1,149 (LBC)	2754 (54.4%)	Hepatic steatosis measured by H-MRS (DHS) or NAFLD diagnosed by LB (LBC)	1149
Luukkonen, 2016; Adult (8)	Finnish European (Finland)	Cases-control Hospital-based N=125	83 (66.4%)	Adults assessed for NAFLD by LB	125
Donati, 2017; Adult (5)	Non-Finnish European (Italy / UK)	Case-control Hospital-based N=765 (Italian) N=358 (UK NAFLD)	188 (24.6%) 143 (39.4%) 387 (34.5%)	Adults with NAFLD diagnosed by LB	1123
Sookoian, 2018; Adult (11)	Caucasian (Argentina)	Case-control Hospital-based N=634	360 (57.0%)	Patients: adults with NAFLD diagnosed by LB Controls: hepatic steatosis absent on US	372
Unpublished data					
UKBB cohort, 2019; Adult	Non-Finnish European (UK)	Population-based N=7,078	3,822 (54%)	GWAS of hepatic steatosis measured by MRI from the UK BioBank.	NA
DiStefano, 2015; Adult (21)	Non-Finnish European (USA)	Cases-only Hospital-based N=1,868	1,512 (80.9%)	GWAS of adults with NAFLD diagnosed by LB	1868
Adams, 2013; Paediatric (22)	Non-Finnish European (Australia)	Population-based N=928	444 (47.8%)	GWAS of adolescents with hepatic steatosis measured by US	NA

Lauridsen, 2018; Adult (40)	Non-Finnish European (Denmark)	Population-based N=7511	775 (53.9%)	Hepatic steatosis measured by CT, part of the Copenhagen General Population Study	NA
Luukkonen, 2018; Adult (41)	Finnish European (Finland)	Cases-only Hospital-based N= 38	21 (55%)	Hepatic steatosis measured by MRS	NA
Speliotes 2011; Adult (1)	Mixed: Non- Finnish European, African American, Hispanic (USA, Iceland, Europe)	Population-based N=4,244	-	GWAS of hepatic steatosis measured by CT	NA
Strnad, Buch, & Hamesch, 2018; Adult (42,43)	Non-Finnish European (Germany, Austria, & Switzerland)	Case-control Hospital-based N=1184	573 (48.4%)	Adults with NAFLD diagnosed by LB	672
Emdin, 2019; Adult (26)	Non-Finnish European (UK)	Population-based N=77,464	42,144 (54%)	Adults with coded diagnosis of NAFLD and/or cirrhosis	NA
Reichert, 2019; Adult (44)	Non-Finnish European (Germany)	Hospital-based N= 54	24 (42.1%)	Adults with NAFLD cirrhosis diagnosed by LB, or US/MRI/CT	NA
Guzman, 2018; Adult (27)	Mixed: Hispanic and non-Hispanic (USA)	Case-control N=246 (GLDI study)	104 (42.3%) 57	Adults with Type 2 Diabetes with hepatic steatosis measured by MRI	NA

		Case-control N=158 (GLDJ study)	(36.1%)		
Wattacheril, 2017; Paediatric (28)	Hispanic (USA)	Cases-only N=208	0 (all male)	GWAS of Hispanic boys with NAFLD diagnosed by LB	208
Chatterjee, 2018; Adult (29)	South Asian (India)	Hospital-based N=354	138 (38.9%)	GWAS of adults with NAFLD diagnosed by LB or US	132
Abeysekera, 2019 (30,31,45); Adult	Non-Finnish European (UK)	Population-based N=2,919	1,781 (61%)	GWAS data from the ALSPAC birth cohort study with steatosis diagnosed using CAP >280kPa	NA

Table 1. Characteristic of studies included in the meta-analysis. ALSPAC, Avon Longitudinal Study of Parents and Children; CAP, controlled attenuation parameter; CT, computerized tomography; DHS, Dallas Heart Study; GWAS, genome-wide association study; LB, liver biopsy; LBC, Liver Biopsy Cohort; MRI, magnetic resonance imaging; MRS, magnetic resonance spectroscopy; NA, not applicable; US, ultrasound.

<Table 1.>

359

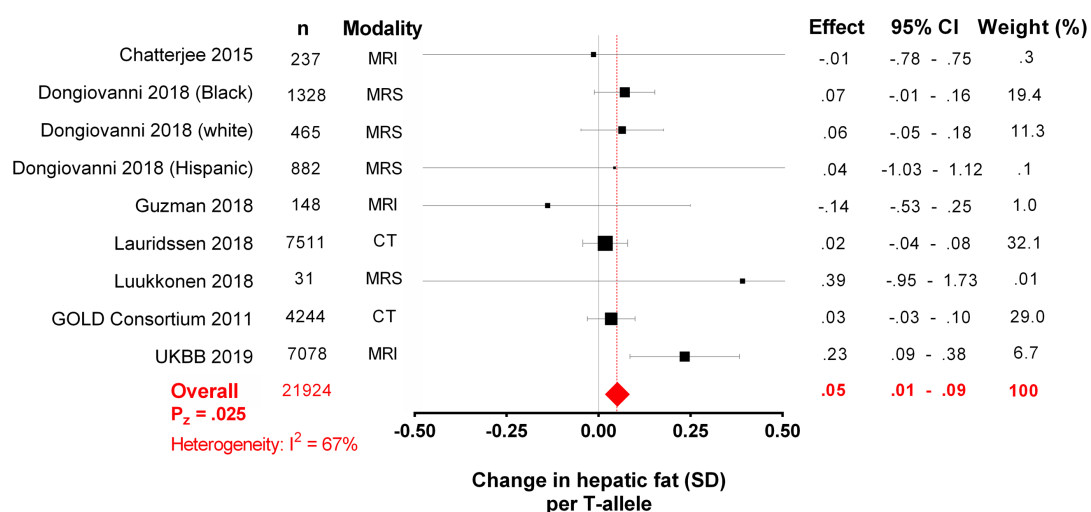
360 In total, 134,015 individuals (4,174 children) were included in the meta-
361 analysis. Most studies were in adults (24/31, 77%) and in individuals of
362 European ancestry (21/31, 68%). Of the 31 included studies, 15 (totaling
363 7,692 unique participants, hereof 345 children) reported data on liver
364 histology.

365

366 Liver fat, NAFLD, and severe steatosis in adults

367 Seven studies (21,924 participants) reported data on hepatic fat as a
368 continuous variable assayed by CT or MR (1,19,27,29,40). In meta-analysis
369 across these seven studies, rs641738 was associated with increased liver fat,
370 with a per T-allele increase of 0.05 (95% CI 0.01 - 0.09) standard deviations in
371 inverse normalized liver fat (Figure 1). There was significant heterogeneity
372 between studies with $I^2 = 67%$ and $\text{Tau}^2 = .002$. This trend of association
373 remained on sub-analysis including only cohorts with Caucasian (European)
374 ethnicity (Supplementary Figure 2).

375



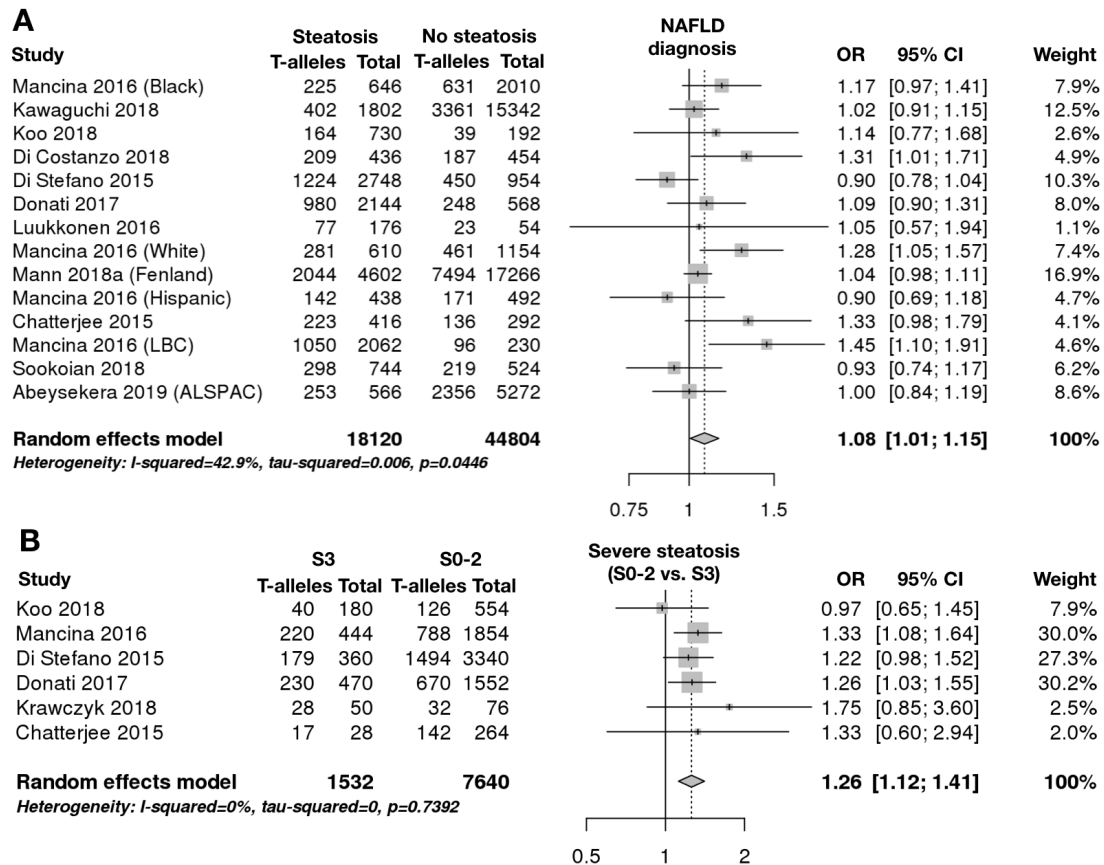
376

377 **Figure 1. The effect of rs641738C>T on liver fat.** Data from 21,924
378 individuals with CT or MRI liver fat. T-allele was associated with a small
379 increase in liver fat, where data represents standard deviation change in
380 normalized liver fat per T-allele. CGPS, Copenhagen General Population
381 Study; CI, confidence interval; ES, effect summary; GOLD, Genetics of Liver
382 Disease; N, number of individuals included; UKBB, UK BioBank.

383

384 The rs641738 variant C>T was also associated with NAFLD as a trait (OR
385 1.08 (95% CI 1.01, 1.15) using an additive model of inheritance (Figure 2A).
386 Sensitivity analysis using the leave-one-out method did not demonstrate any
387 individual study to affect the estimate (Supplementary Figure 3) and there was
388 no evidence of study distribution bias on funnel plot (Egger's test p=0.23,
389 Supplementary Figure 4). The trend of a positive association was seen on
390 sub-analysis in Caucasians (OR 1.10 (95% CI 0.99, 1.21), Supplementary
391 Figure 5A).

392



393

394 **Figure 2. rs641738C>T is associated with higher odds of diagnosis of**
 395 **NAFLD and histological severity of steatosis.** Data from 31,462 adults with
 396 radiologically defined steatosis for presence versus absence of NAFLD (2A),
 397 and from 4,572 adults with liver biopsy data for presence of severe steatosis
 398 (S0-2 versus S3, 2B) using an additive model of inheritance. ALSPAC, Avon
 399 Longitudinal Study of Parents and Children; LBC, Liver Biopsy Cohort.

400

401

402 In patients with NAFLD, rs641738C>T was associated with the presence of
 403 severe steatosis (S0-2 vs. S3) on liver biopsy (OR 1.26 [95% CI 1.12, 1.41],
 404 **Figure 2B**). This association remained on sub-analysis in Caucasian
 405 individuals (OR 1.28 [95% CI 1.14, 1.45], **Supplementary Figure 5B**). A similar
 406 trend was observed using CAP and semi-quantitative ultrasound to assess

407 steatosis severity (β .02 (95% CI -.002, .04) standard deviations of inverse
 408 normalized liver fat score per T-allele, **Supplementary Figure 6**).

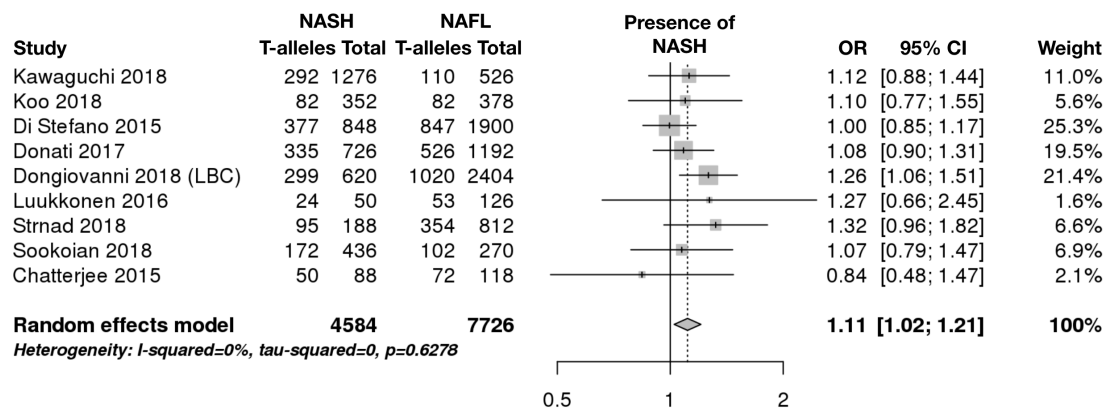
409

410

411 **Histological NASH in adults**

412 Data from 9 studies (6,155 participants) showed that rs641738C>T was
 413 positively associated with the presence of NASH on biopsy in adults (OR 1.11
 414 (95% 1.02, 1.21, **Figure 3**). A similar magnitude of effect was observed on
 415 sub-analysis in Caucasian individuals (OR 1.13 (95% 1.01, 1.27,
 416 **Supplementary Figure 7**).

417



418

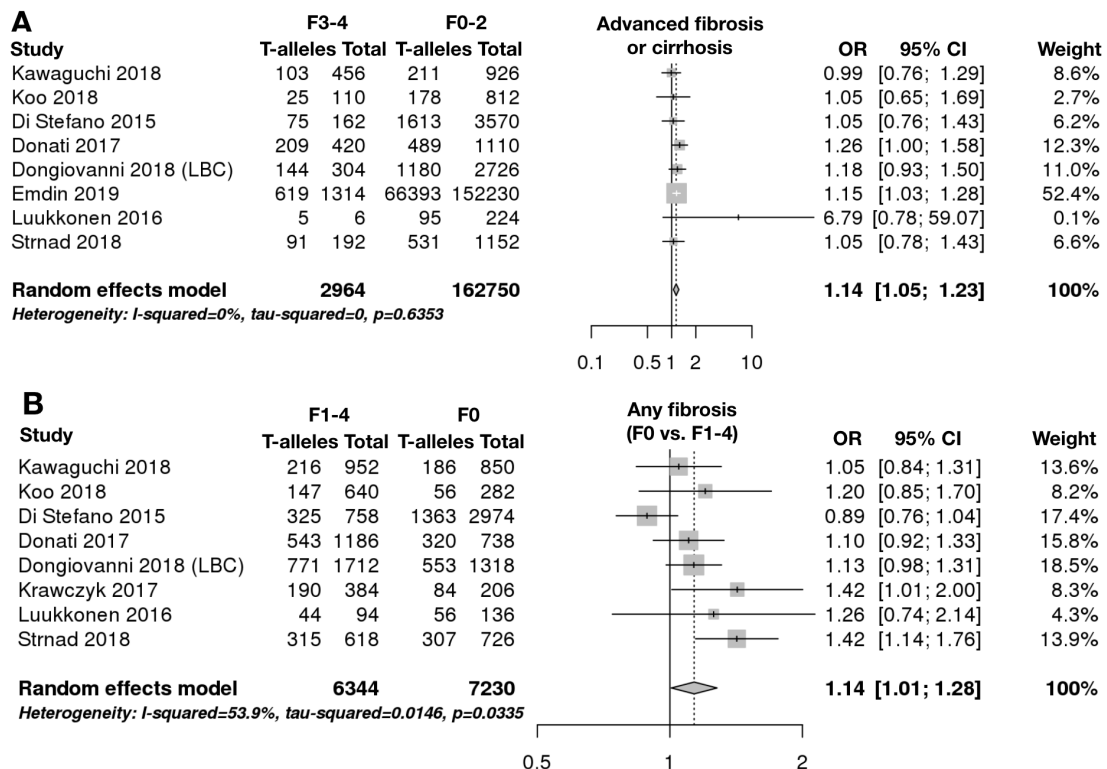
419 **Figure 3. rs641738C>T is associated with higher odds of NASH on**
 420 **biopsy.** Data from 6,155 adults with NASH defined according to the FLIP
 421 algorithm for NAFL versus NASH, using an additive model of inheritance.
 422 NAFL, non-alcoholic fatty liver.

423

424

425 **Fibrosis in adults**

426 Data from 8 studies (82,857 adults, 6,787 with liver biopsy data) were
 427 included in meta-analysis of fibrosis. Our primary outcome, presence of
 428 advanced fibrosis in adults (stage F0-2 versus stage F3-4), was positively
 429 associated with T-allele (OR 1.14 (95% 1.05, 1.23), **Figure 4A**) in adults.
 430 Sensitivity analysis, including omission of coded cirrhosis data from Emdin *et*
 431 *al.*(26), did not alter the effect summary (**Supplementary figure 8**). Presence of
 432 any fibrosis (stage 0 versus stage 1-4) was also positively associated with
 433 rs641738C>T (OR 1.14 (95% 1.01, 1.28), **Figure 4B**). On sub-analysis of
 434 Caucasian individuals, rs641738C>T was associated with advanced fibrosis
 435 (OR 1.16 (95% 1.06, 1.26)) but not with any fibrosis (OR 1.15 (95% 0.99,
 436 1.34)) despite a positive trend (**Supplementary figure 9**).
 437



438
 439 **Figure 4. rs641738C>T is associated with increased fibrosis in NAFLD. A,**
 440 **data from 6,787 adults with biopsy-proven NAFLD (plus coding data from**

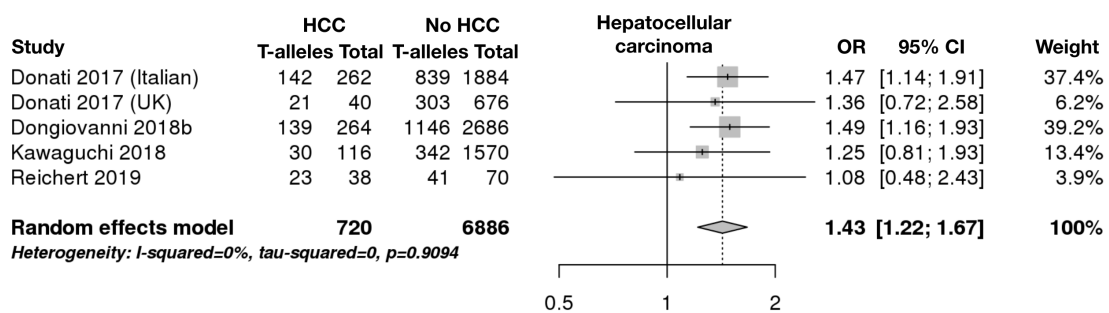
441 Emdin et al.) comparing advanced fibrosis (F3-4) versus F0-2, using an
 442 additive model of inheritance. B, data from 6,787 adults with biopsy-proven
 443 NAFLD comparing any fibrosis (F1-4) versus no fibrosis F0.

444

445 **Development of hepatocellular carcinoma**

446 Five cohorts (3,803 participants, 360 cases of NAFLD-HCC) reported on
 447 development of HCC in patients with NAFLD. Presence of T-allele was
 448 associated with increased odds of HCC in NAFLD (OR 1.43 (95% CI 1.22,
 449 1.67, Figure 5).

450



451

452 **Figure 5. rs641738C>T is associated with higher odds of NAFLD-HCC.**

453 Data from 3,803 adults with NAFLD assessing for the presence versus
 454 absence of HCC, using an additive model of inheritance.

455

456

457 **Effect on aminotransferases, lipids, and fasting insulin**

458 Data from 12 studies (17,148 participants) was available for meta-analysis of
 459 serum biochemical parameters. T-allele was associated with lower
 460 triglycerides (mean difference CC versus TT genotype -3.7 mg/dL (95% CI -

461 7.2, -0.2)) but no other effect on aminotransferases, serum lipids, or fasting
 462 insulin (Table 2).

463

	Number of cohorts	P _Q	I ²	Random effects		
				Mean difference	[95% CI]	P _Z
ALT, IU/L (n=17,102)	14	.44	.01	-.27	-.91, 0.37	.41
Triglycerides, mg/dL (n=17,148)	15	.19	.23	-3.71	-7.22, -.20	.04
Total cholesterol, mg/dL (n=16,822)	13	.009	.52	.45	-2.41, 3.31	.76
High-density lipoprotein, mg/dL (n=9,843)	10	.08	.39	-.26	-1.31, .80	.63
Low density lipoprotein, mg/dL (n=8,800)	7	.18	.30	2.06	-.30, 4.42	.09
Fasting insulin, mU/L (n=6,269)	4	.004	.71	-.66	-2.52, 1.20	.49

464

465 *Table 2. Meta-analysis for the effect of rs641738C>T on biochemical indices liver*
 466 *damage dyslipidemia, and insulin resistance. Data represents the mean difference*
 467 *between CC and TT genotypes using random effects. N represents the sum of*
 468 *individuals with CC and TT genotypes included in each analysis.*

469

470

471

472 **Disease outcomes in adults**

473 Using data from previous meta-analyses via Phenoscanner and UK BioBank
 474 data via GeneAtlas, rs641738C>T was weakly positively associated stroke (β
 475 0.0007, $p=0.004$), Supplementary table 2). There was no evidence of an
 476 association with type 2 diabetes, coronary artery disease, or chronic kidney
 477 disease. It was also associated with higher alkaline phosphatase (β 0.005,
 478 $p=6.1 \times 10^{-6}$).

479

480 **Effect of rs641738C>T on paediatric NAFLD**

481 Data from seven studies (4,174 children) was used in the meta-analysis.
482 rs641738C>T was not significantly associated with any disease outcome
483 studied (Supplementary table 3 and Supplementary Figure 10). However
484 there was a trend towards increasing hepatic fat fraction (0.19 SD (95% CI -
485 0.05, 0.42)) and severity of steatosis (OR 1.21 (95% 0.89, 1.64)).

486

487

488

489

490

491

492 **DISCUSSION**

493 Identification of genetic variants associated with NAFLD has the potential to
494 inform pre-clinical research and our understanding of hepatic metabolism. In
495 this meta-analysis we have validated the importance of rs641738C>T near
496 *MBOAT7* on the full spectrum of NAFLD in adults.

497

498 A two-stage GWAS initially identified rs641738C>T as a genome-wide
499 significant locus for alcohol-related cirrhosis(3). *MBOAT7* was a potentially
500 interesting target as an enzyme involved in (phosphor)lipid metabolism,
501 conceptually similar to other SNVs at GWAS-significance in alcoholic and
502 non-alcoholic liver disease, namely *TM6SF2* and *PNPLA3*. Later studies
503 found the variant to influence the full spectrum of fatty liver disease, from
504 steatosis to NASH, to fibrosis, cirrhosis and HCC(4,8). However, these
505 associations have not been consistently replicated in the literature(11). We
506 conducted a meta-analysis to firmly establish the association of rs641738C>T
507 with NAFLD.

508

509 **Main findings**

510 We found that the T-allele of rs641738C>T was associated with higher liver
511 fat content, and with an increased risk of NASH, fibrosis, and HCC. The
512 effects sizes of rs641738C>T reported here are small compared to those of
513 *PNPLA3* p.I148M and *TM6SF2* p.E167K, the two strongest steatogenic
514 variants(2). Also, unlike NASH-associated variants in *PNPLA3*, *HSD17B13*,
515 *MARC1*, and *TM6SF2*, there was no association between this *MBOAT7*
516 variant and alanine or aspartate aminotransferase. The marginal positive

517 effect of this variant on hepatic triglyceride content may suggest alterations in
518 the composition of hepatic lipid, rather than quantity(8). This is consistent with
519 pre-clinical data on lipotoxicity, where the composition of hepatic fats
520 influence development of NASH. On the other hand, a recent Mendelian
521 randomization study using these variables as instruments to assess causality
522 of fatty liver in determining fibrosis has shown the effect of steatosis highly
523 correlates with fibrosis in all the genetic variables indicating that quantity of
524 lipid rather than quality may be more important(19). Functional studies are
525 needed to understand the relationship between quality/quantity of fat and
526 hepato-toxic/-protective mechanism in causing progression of disease.

527

528 The function of this variant is still relatively poorly understood and there is
529 conflicting evidence as to whether rs641738 is associated with changes in
530 hepatic expression of *MBOAT7*. Results from the GTEx Consortium show a
531 strong negative association with T-allele(7), which is supported by data from
532 Schadt et al.(46). *MBOAT7* protein expression correlated with mRNA in liver
533 biopsies from Mancina *et al.*(4) but this finding was not replicated by Sookoian
534 *et al.*(11). *MBOAT7* encodes LPIAT1, a 6 transmembrane domain protein
535 involved in acyl-chain remodeling of membranes that influence intracellular
536 membrane composition and circulating phosphatidylinositols(8). Further
537 recent metabolite profiling data implicates *MBOAT7* as the causal gene for
538 this SNV(24). Moreover, TMC4 was found with a low expression in the liver(4)
539 that is consistent with no mechanistic data supporting its role in NAFLD.

540

541 The hypothesis that *MBOAT7* is the causal gene underlying the association
542 with liver disease at the locus is supported by the observation that mice
543 deficient for *MBOAT7* have altered hepatic concentrations of polyunsaturated
544 phosphatidylinositol(47). Similarly, metabolite data from humans is strongly
545 suggestive that rs641738C>T reduces *MBOAT7* function(48). In addition, loss
546 of *MBOAT7*, but not *TMC4*, increases the severity of NAFLD in mice fed a
547 high-fat diet(49). It is not known whether these genetically modified animals
548 have increased susceptibility to HCC.

549

550 This variant shows a particularly strong association with development of HCC.
551 It is unclear whether this reflects the effect on NASH-fibrosis or if there is a
552 specific causal relationship between *MBOAT7* and HCC.

553

554 We found no evidence of rs641738 on insulin resistance: the key driver of
555 hepatic steatosis, as determined by unaltered fasting insulin concentrations.
556 GWAS meta-analyses of type 2 diabetes have implicated p.I148M in *PNPLA3*
557 and p.E167K in *TM6SF2* as significant risk loci (albeit with very modest effect
558 size as compared to their effects on liver disease) and a Mendelian
559 randomization study indicates a causal role in determining insulin resistance
560 mediated by the degree of liver damage(19). Similarly, these two variants are
561 associated with reduced risk of coronary artery disease whereas rs641738
562 has no effect. It does, however, appear to be weakly associated with higher
563 prevalence of stroke in the UK BioBank(17). Our analysis also found lower
564 serum triglycerides in those with TT-genotype versus CC-genotype, though
565 this was not replicated in the Global Lipid Genetic Consortium data(50).

566

567 There is some evidence that genetic variants affect response to drug
568 treatment (for *PNPLA3*) but this is yet to be explored for *MBOAT7*. It will be
569 equally interesting to assess whether somatic genotype of variants associated
570 with HCC affects treatment response.

571

572 A strength of this analysis is the inclusion of data from individuals of multiple
573 ethnicities (and genetic ancestries). We found no difference in the impact of
574 the variant on liver disease among Caucasian and non-Caucasian individuals.
575 Another strength is the large number of individuals with liver biopsy-derived
576 phenotypic data.

577

578 **Limitations and quality of evidence**

579 An important practical consideration is the population frequency of this variant
580 in different ethnicities. The mean allelic frequency of the effect (T-)allele is
581 highly variable: from 0.24 in East Asians compared to 0.53 in those of South
582 Asian ancestry.

583

584 Studies measured hepatic fat using several different imaging modalities,
585 which have varying sensitivity for quantification of liver fat. This may have
586 accounted for some of the heterogeneity observed in these analyses. There
587 was a trend towards more positive associations in population-based studies
588 using more sensitive techniques (MRI or MRS). It is possible that weighting
589 towards large CT-based studies could have underestimated the true effect
590 size.

591

592 We found significant differences between adult and paediatric histological
593 analyses though a consistent trend was observed in the analysis of hepatic fat
594 fraction. There are several potential reasons, including: sample size
595 insufficient to demonstrate an effect, variations in imaging quantification of fat,
596 too few clinical events (i.e. with fibrosis) to demonstrate an effect, different
597 histology of paediatric NASH, or a true alternative effect of this variant on
598 paediatric NAFLD.

599

600 Though there was minimal heterogeneity across included studies, the
601 numbers of individuals with NAFLD and HCC were comparatively low. Further
602 work in this area may improve the accuracy of effect estimates.

603

604 **Conclusions**

605 rs641738C>T near *MBOAT7* increases risk of NASH, fibrosis, and HCC in
606 NAFLD with a small, positive effect on total liver fat and no impact on insulin
607 resistance. These data validate this locus as significant in the pathogenesis of
608 NAFLD.

609

610

611

612 **ACKNOWLEDGEMENTS**

613 The authors are grateful to the Raine Study participants and their families,
614 and to the Raine Study research staff for cohort coordination and data
615 collection. The authors gratefully acknowledge the following institutes for

616 providing funding for Core Management of the Raine Study: The University of
617 Western Australia (UWA), Curtin University, the Raine Medical Research
618 Foundation, the UWA Faculty of Medicine, Dentistry and Health Sciences, the
619 Telethon Kids Institute, the Women and Infants Research Foundation (King
620 Edward Memorial Hospital) and Edith Cowan University).

621 We are extremely grateful to all the families who took part in the ALSPAC
622 study, the midwives for their help in recruiting them, and the whole ALSPAC
623 team, which includes interviewers, computer and laboratory technicians,
624 clerical workers, research scientists, volunteers, managers, receptionists and
625 nurses.

626 This study has been conducting using data from the Fenland study. The
627 authors gratefully acknowledge the help of the MRC Epidemiology Unit
628 Support Teams, including Field, Laboratory and Data Management Teams.

629 The authors are grateful to the members of the EU-PNAFLD Registry,
630 including Anita Vreugdenhil, Anna Alisi, Piotr Socha, Wojciech Jańczyk, Ulrich
631 Baumann, Sanjay Rajwal, Indra van Mourik, Florence Lacaille, Myriam
632 Dabbas, Deirdre A. Kelly, Quentin M. Anstee and the late Valerio Nobili. We
633 would also like to thank Naga Chalasani for his helpful comments. This
634 research has made use of the UK Biobank resource under project number
635 9914.

636

637 **REFERENCES**

- 638 1. Speliotes EK, Yerges-armstrong LM, Wu J, Hernaez R, Lauren J,
639 Palmer CD, et al. Genome-Wide Association Analysis Identifies
640 Variants Associated with Nonalcoholic Fatty Liver Disease That Have
641 Distinct Effects on Metabolic Traits. *Plos Genet.* 2011;7:e1001324.
- 642 2. Eslam M, Valenti L, Romeo S. Genetics and epigenetics of NAFLD and
643 NASH: Clinical impact. *J. Hepatol.* [Internet]. 2018;68:268–279.
644 Available from: <https://doi.org/10.1016/j.jhep.2017.09.003>
- 645 3. Buch S, Stickel F, Trépo E, Way M, Herrmann A, Nischalke HD, et al. A
646 genome-wide association study confirms PNPLA3 and identifies
647 TM6SF2 and MBOAT7 as risk loci for alcohol-related cirrhosis. *Nat.*
648 *Genet.* [Internet]. 2015;47:1443–1448. Available from:
649 <http://dx.doi.org/10.1038/ng.3417>
- 650 4. Mancina RM, Dongiovanni P, Petta S, Pingitore P, Meroni M, Rametta
651 R, et al. The MBOAT7-TMC4 Variant rs641738 Increases Risk of
652 Nonalcoholic Fatty Liver Disease in Individuals of European Descent.
653 *Gastroenterology.* 2016;150:1219-1230e6.
- 654 5. Donati B, Dongiovanni P, Romeo S, Meroni M, McCain M, Miele L, et al.
655 MBOAT7 rs641738 variant and hepatocellular carcinoma in non-
656 cirrhotic individuals. *Sci. Rep.* [Internet]. 2017;7:4492. Available from:
657 <http://www.nature.com/articles/s41598-017-04991-0>
- 658 6. Gijón MA, Riekhof WR, Zarini S, Murphy RC, Voelker DR.
659 Lysophospholipid acyltransferases and arachidonate recycling in human
660 neutrophils. *J. Biol. Chem.* 2008;283:30235–30245.
- 661 7. Consortium TGte. The Genotype-Tissue Expression (GTEx) project.

- 662 Nat. Genet. 2013;45:580–585.
- 663 8. Luukkonen PK, Zhou Y, Hyötyläinen T, Leivonen M, Arola J, Orho-
664 Melander M, et al. The MBOAT7 variant rs641738 alters hepatic
665 phosphatidylinositols and increases severity of non-alcoholic fatty liver
666 disease in humans. J. Hepatol. [Internet]. 2016;65:1263–1265.
667 Available from:
668 <http://www.sciencedirect.com/science/article/pii/S0168827816304214>
- 669 9. Krawczyk M, Rau M, Schattenberg JM, Bantel H, Pathil A, Demir M, et
670 al. Combined effects of the *PNPLA3* rs738409, *TM6SF2* rs58542926,
671 and *MBOAT7* rs641738 variants on NAFLD severity: a multicenter
672 biopsy-based study. J. Lipid Res. [Internet]. 2017;58:247–255. Available
673 from: <http://www.jlr.org/lookup/doi/10.1194/jlr.P067454>
- 674 10. Koo BK, Joo SK, Kim D, Bae JM, Park JH, Kim JH, et al. Additive
675 effects of *PNPLA3* and *TM6SF2* on the histological severity of non-
676 alcoholic fatty liver disease. J. Gastroenterol. Hepatol. 2018;33:1277–
677 1285.
- 678 11. Sookoian S, Flichman D, Garaycochea ME, Gazzi C, Martino JS,
679 Castaño GO, et al. Lack of evidence supporting a role of *TMC4*-
680 rs641738 missense variant - *MBOAT7*- intergenic downstream variant -
681 In the Susceptibility to Nonalcoholic Fatty Liver Disease. Sci. Rep.
682 2018;8:5097.
- 683 12. Umamo GR, Caprio S, Di Sessa A, Chalasani N, Dykas DJ, Pierpont B,
684 et al. The rs626283 variant in the *MBOAT7* gene is associated with
685 insulin resistance and fatty liver in Caucasian obese youth. Am. J.
686 Gastroenterol. [Internet]. 2018;113:376–383. Available from:

- 687 <http://dx.doi.org/10.1038/ajg.2018.1>
- 688 13. Hudert CA, Selinski S, Rudolph B, Bläker H, Christoph, Loddenkemper,
689 et al. Genetic determinants of steatosis and fibrosis progression in
690 pediatric non-alcoholic fatty liver disease. *Liver Int.* 2018;In Press:doi:
691 10.1111/liv.14006.
- 692 14. Johansen A, Rosti RO, Musaev D, Sticca E, Harripaul R, Zaki M, et al.
693 Mutations in MBOAT7, Encoding Lysophosphatidylinositol
694 Acyltransferase I, Lead to Intellectual Disability Accompanied by
695 Epilepsy and Autistic Features. *Am. J. Hum. Genet.* 2016;99:912–916.
- 696 15. Pelusi S, Baselli G, Pietrelli A, Dongiovanni P, Donati B, McCain MV, et
697 al. Rare Pathogenic Variants Predispose to Hepatocellular Carcinoma
698 in Nonalcoholic Fatty Liver Disease. *Sci. Rep.* 2019;9:1–10.
- 699 16. Staley JR, Blackshaw J, Kamat MA, Ellis S, Surendran P, Sun BB, et al.
700 PhenoScanner: A database of human genotype-phenotype
701 associations. *Bioinformatics.* 2016;32:3207–3209.
- 702 17. Canela-Xandri O, Rawlik K, Tenesa A. An atlas of genetic associations
703 in UK Biobank. *Nat. Genet.* [Internet]. 2018;50:1593–1599. Available
704 from: <http://www.ncbi.nlm.nih.gov/pubmed/30349118>
- 705 18. De Lucia Rolfe E, Brage S, Sleigh A, Finucane F, Griffin SJ, Wareham
706 NJ, et al. Validity of ultrasonography to assess hepatic steatosis
707 compared to magnetic resonance spectroscopy as a criterion method in
708 older adults. *PLoS One.* 2018;13:87–99.
- 709 19. Dongiovanni P, Stender S, Pietrelli A, Mancina RM, Cespiati A, Petta S,
710 et al. Causal relationship of hepatic fat with liver damage and insulin
711 resistance in nonalcoholic fatty liver. *J. Intern. Med.* 2018;283:356–370.

- 712 20. Krawczyk M, Bantel H, Rau M, Schattenberg JM, Grünhage F, Pathil A,
713 et al. Could inherited predisposition drive non-obese fatty liver disease?
714 Results from German tertiary referral centers. *J. Hum. Genet.* [Internet].
715 2018;63:621–626. Available from: [http://dx.doi.org/10.1038/s10038-018-](http://dx.doi.org/10.1038/s10038-018-0420-4)
716 0420-4
- 717 21. DiStefano JK, Kingsley C, Craig Wood G, Chu X, Argyropoulos G, Still
718 CD, et al. Genome-wide analysis of hepatic lipid content in extreme
719 obesity. *Acta Diabetol.* 2014;52:373–382.
- 720 22. Adams LA, White SW, Marsh JA, Lye SJ, Connor KL, Maganga R, et al.
721 Association between liver-specific gene polymorphisms and their
722 expression levels with nonalcoholic fatty liver disease. *Hepatology.*
723 2013;57:590–600.
- 724 23. Stender S, Smagris E, Lauridsen BK, Kofoed KF, Nordestgaard BG,
725 Tybjærg-Hansen A, et al. Relationship between genetic variation at
726 PPP1R3B and levels of liver glycogen and triglyceride. *Hepatology.*
727 2018;67:2182–2195.
- 728 24. Mann JP, Pietzner M, Wittemans LB, Rolfe EDL, Kerrison N, Allison
729 ME, et al. Metabolomic patterns associated with known genetic variants
730 for hepatic steatosis and non-alcoholic steatohepatitis identify
731 biomarkers that may be of utility in predicting adverse liver outcomes. *J*
732 *Hepatol.* 2018;68:S331–S332.
- 733 25. Kawaguchi T, Shima T, Mizuno M, Mitsumoto Y, Umemura A, Kanbara
734 Y, et al. Risk estimation model for nonalcoholic fatty liver disease in the
735 Japanese using multiple genetic markers. *PLoS One.* 2018;13:1–16.
- 736 26. Emdin CA, Haas M, Khera A V, Aragam K, Chaffin M, Jian L, et al. A

- 737 missense variant in Mitochondrial Amidoxime Reducing Component 1
738 gene and protection against liver disease. bioRxiv.
739 2019;<http://dx.doi.org/10.1101/594523>.
- 740 27. Guzman CB, Duvvuru S, Akkari A, Bhatnagar P, Battioui C, Foster W,
741 et al. Coding variants in PNPLA3 and TM6SF2 are risk factors for
742 hepatic steatosis and elevated serum alanine aminotransferases
743 caused by a glucagon receptor antagonist . *Hepatol. Commun.*
744 2018;2:561–570.
- 745 28. Wattacheril J, Lavine JE, Chalasani NP, Guo X, Kwon S, Schwimmer J,
746 et al. Genome-Wide Associations Related to Hepatic Histology in
747 Nonalcoholic Fatty Liver Disease in Hispanic Boys. *J. Pediatr.* [Internet].
748 2017;190:100-107.e2. Available from:
749 <https://doi.org/10.1016/j.jpeds.2017.08.004>
- 750 29. Chatterjee A, Das K, Singh P, Mondal D, Ghosh R, Chowdhury A, et al.
751 Exome-wide association study with hepatic fat content in nonalcoholic
752 fatty liver disease reveals significant association with 5 novel QTLs.
753 *Hepatol. Int.* 2018;12:181.
- 754 30. Boyd A, Golding J, Macleod J, Lawlor DA, Fraser A, Henderson J, et al.
755 Cohort profile: The 'Children of the 90s'-The index offspring of the avon
756 longitudinal study of parents and children. *Int. J. Epidemiol.*
757 2013;42:111–127.
- 758 31. Northstone K, Lewcock M, Groom A, Boyd A, Macleod J, Timpson N, et
759 al. The Avon Longitudinal Study of Parents and Children (ALSPAC): an
760 updated on the enrolled sample of index children in 2019. *Wellcome*
761 *Open Res.* 2019;4:doi.org/10.12688/wellcomeopenres.15132.1.

- 762 32. Harris PA, Taylor R, Thielke R, Payne J, Gonzalez N, Conde JG.
763 Research electronic data capture (REDCap)-A metadata-driven
764 methodology and workflow process for providing translational research
765 informatics support. *J. Biomed. Inform.* 2009;42:377–381.
- 766 33. Martorell-Marugan J, Toro-Dominguez D, Alarcon-Riquelme ME,
767 Carmona-Saez P. MetaGenyo: A web tool for meta-analysis of genetic
768 association studies. *BMC Bioinformatics.* 2017;18:1–6.
- 769 34. Di Sessa A, Umamo GR, Cirillo G, Del Prete A, Iacomino R, Marzuillo P,
770 et al. The Membrane-bound O-Acyltransferase7 rs641738 Variant in
771 Pediatric Nonalcoholic Fatty Liver Disease. *J. Pediatr. Gastroenterol.*
772 *Nutr.* 2018;67:69–74.
- 773 35. Di Costanzo A, Belardinilli F, Bailetti D, Sponziello M, D’Erasmus L,
774 Polimeni L, et al. Evaluation of Polygenic Determinants of Non-Alcoholic
775 Fatty Liver Disease (NAFLD) By a Candidate Genes Resequencing
776 Strategy. *Sci. Rep.* 2018;8:1–10.
- 777 36. Dongiovanni P, Meroni M, Mancina RM, Baselli G, Rametta R, Pelusi S,
778 et al. Protein phosphatase 1 regulatory subunit 3B gene variation
779 protects against hepatic fat accumulation and fibrosis in individuals at
780 high risk of nonalcoholic fatty liver disease. *Hepatol. Commun.*
781 2018;2:666–675.
- 782 37. Lin YC, Chang PF, Chang MH, Ni YH. Genetic determinants of hepatic
783 steatosis and serum cytokeratin-18 fragment levels in Taiwanese
784 children. *Liver Int.* 2018;38:1300–1307.
- 785 38. Viitasalo A, Eloranta A-M, Atalay M, Romeo S, Pihlajamaki J, Lakka TA.
786 Association of MBOAT7 gene variant with plasma ALT levels in

- 787 children: the PANIC study. *Pediatr. Res.* 2016;80:651–655.
- 788 39. Mann JP, Vreugdenhil A, Socha P, Jańczyk W, Baumann U, Rajwal S,
789 et al. European paediatric non-alcoholic fatty liver disease registry (EU-
790 PNAFLD): Design and rationale. *Contemp. Clin. Trials.* 2018;75:67–71.
- 791 40. Lauridsen BK, Stender S, Kristensen TS, Kofoed KF, Køber L,
792 Nordestgaard BG, et al. Liver fat content, non-alcoholic fatty liver
793 disease, and ischaemic heart disease: Mendelian randomization and
794 meta-analysis of 279 013 individuals. *Eur. Heart J.* 2018;39:385–393.
- 795 41. Luukkonen PK, Sädevirta S, Zhou Y, Kayser B, Ali A, Ahonen L, et al.
796 Saturated fat is more metabolically harmful for the human liver than
797 unsaturated fat or simple sugars. *Diabetes Care.* 2018;41:1732–1739.
- 798 42. Strnad P, Buch S, Hamesch K, Fischer J, Rosendahl J, Schmelz R, et
799 al. Heterozygous carriage of the alpha1-antitrypsin Pi*Z variant
800 increases the risk to develop liver cirrhosis. *Gut* [Internet]. 2018;Epub
801 ahead:doi: 10.1136/gutjnl-2018-316228. Available from:
802 <http://gut.bmj.com/lookup/doi/10.1136/gutjnl-2018-316228>
- 803 43. von Schönfels W, Beckmann JH, Ahrens M, Hendricks A, Röcken C,
804 Szymczak S, et al. Histologic improvement of NAFLD in patients with
805 obesity after bariatric surgery based on standardized NAS (NAFLD
806 activity score). *Surg. Obes. Relat. Dis.* 2018;14:1607–1616.
- 807 44. Reichert M, Ripoll C, Casper M, Horn P, Bruns T, Grünhage F, et al.
808 Increased prevalence of low-frequency and rare NOD2 variants in
809 patients with liver cirrhosis. *J. Hepatol.* 2019;70:e442.
- 810 45. Abeysekera KW, Fernandes G, Hammerton G, Gordon F, Portal A,
811 Heron J, et al. The prevalence of non-alcoholic fatty liver disease in

812 young adults: An impending public health crisis? *J. Hepatol.*
813 2019;70:e45.

814 46. Schadt EE, Molony C, Chudin E, Hao K, Yang X, Lum PY, et al.
815 Mapping the genetic architecture of gene expression in human liver.
816 *PLoS Biol.* 2008;6:1020–1032.

817 47. Lee H-C, Inoue T, Sasaki J, Kubo T, Matsuda S, Nakasaki Y, et al.
818 LPIAT1 regulates arachidonic acid content in phosphatidylinositol and is
819 required for cortical lamination in mice. *Mol. Biol. Cell.* 2012;23:4689–
820 4700.

821 48. Shin S-Y, Fauman EB, Petersen A-K, Krumsiek J, Santos R, Huang J,
822 et al. An atlas of genetic influences on human blood metabolites. *Nat*
823 *Genet* [Internet]. 2014;46:543–550. Available from:
824 <http://dx.doi.org/10.1038/ng.2982>
825 <http://www.nature.com/ng/journal/v46/n6/pdf/ng.2982.pdf>

826 49. Helsley RN, Varadharajan V, Brown AL, Gromovsky AD, Schugar RC,
827 Ramachandiran I, et al. Obesity-linked suppression of membrane-
828 bound O -acyltransferase 7 (MBOAT7) drives non-alcoholic fatty liver
829 disease. *Elife.* 2019;8:e49882.

830 50. Willer CJ, Schmidt EM, Sengupta S, Peloso GM, Gustafsson S, Kanoni
831 S, et al. Discovery and refinement of loci associated with lipid levels.
832 *Nat. Genet.* 2013;45:1274–1285.

833